

Data Path : Z:\pestpcbsrv\HPCHEM1\ECD_P\Data\PP081325\
 Data File : PP074369.D
 Signal(s) : Signal #1: ECD1A.ch Signal #2: ECD2B.ch
 Acq On : 14 Aug 2025 00:18
 Operator : YP\AJ
 Sample : AR1242CCC500
 Misc :
 ALS Vial : 4 Sample Multiplier: 1

Instrument :
 ECD_P
 ClientSampleId :
 AR1242CCC500

Integration File signal 1: autoint1.e
 Integration File signal 2: autoint2.e
 Quant Time: Aug 14 01:51:06 2025
 Quant Method : Z:\pestpcbsrv\HPCHEM1\ECD_P\methods\PP080125.M
 Quant Title : GC EXTRACTABLES
 QLast Update : Mon Aug 04 11:01:49 2025
 Response via : Initial Calibration
 Integrator: ChemStation

Volume Inj. : 2 µl
 Signal #1 Phase : ZB-MR1 Signal #2 Phase: ZB-MR2
 Signal #1 Info : 30Mx0.32mmx 0.50µ Signal #2 Info : 30M x 0.32mm x 0.25µm

Compound	RT#1	RT#2	Resp#1	Resp#2	ng/ml	ng/ml
System Monitoring Compounds						
1) SA Tetrachlo...	4.661	3.804	56882606	207.4E6	50.865	54.100
2) SA Decachlor...	10.440	8.820	44866323	298.3E6	46.199	49.606
Target Compounds						
3) L1 AR-1016-1	5.812	4.903	17826073	182.7E6	432.076	457.932
4) L1 AR-1016-2	5.834	4.962	25911274	86636737	426.581	461.302
5) L1 AR-1016-3	5.897	5.081	17379154	47986436	438.198	452.405
6) L1 AR-1016-4	5.994	5.122	14301693	45856604	439.451	419.855
7) L1 AR-1016-5	6.286	5.336	13987871	53208926	430.820	454.920
8) L2 AR-1221-1	4.856	4.014	2261290	6250845	134.893	127.347
9) L2 AR-1221-2	4.947	4.101	3359883	8430098	266.635	234.892
10) L2 AR-1221-3	5.021	4.177	10823090	38716766	295.429	286.315
11) L3 AR-1232-1	5.021	4.177	10823090	38716766	372.730	381.964
12) L3 AR-1232-2	5.548	4.903	13579346	182.7E6	902.719	1048.185
13) L3 AR-1232-3	5.834	5.081	25911274	47986436	893.440	1047.359
14) L3 AR-1232-4	5.994	5.165	14301693	87213437	924.549	1503.402 #
15) L3 AR-1232-5	6.083	5.336	12056058	53208926	1029.024	1132.600
16) L4 AR-1242-1	5.812	4.903	17826073	182.7E6	478.349	529.243
17) L4 AR-1242-2	5.834	4.962	25911274	86636737	476.232	530.285
18) L4 AR-1242-3	5.897	5.081	17379154	47986436	486.323	520.187
19) L4 AR-1242-4	5.994	5.165	14301693	87213437	489.471	730.299 #
20) L4 AR-1242-5	6.723	5.684	16125786	77333838	453.506	517.076
21) L5 AR-1248-1	5.812	4.903	17826073	182.7E6	636.315	853.839 #
22) L5 AR-1248-2	6.083	5.122	12056058	45856604	299.447	313.415
23) L5 AR-1248-3	6.286	5.165	13987871	87213437	313.815	508.652 #
24) L5 AR-1248-4	6.684	5.336	14647997	53208926	281.491	319.816
25) L5 AR-1248-5	6.723	5.727	16125786	92716480	283.190	318.651
26) L6 AR-1254-1	6.658	5.684	11189122	77333838	212.555	211.190
27) L6 AR-1254-2	6.879	5.832	13142419	20415481	165.304	73.380 #
28) L6 AR-1254-3	7.237	6.234	7406413	23632491	84.823	48.307 #
29) L6 AR-1254-4	7.520	6.462	4305837	19285117	67.480	52.467
30) L6 AR-1254-5	7.936	6.879	1224404	4456807	15.089	11.571
31) L7 AR-1260-1	7.405	6.547	685654	2572710	12.166	6.369 #
32) L7 AR-1260-2	7.653	6.706	1122068	2827720	16.464	9.043 #
33) L7 AR-1260-3	8.001	6.920	122537	395412	2.299	1.003 #
34) L7 AR-1260-4	8.225	7.174	494926	341668	7.904	1.174 #
35) L7 AR-1260-5	8.566	7.422	153766	606272	1.357	0.800 #
36) L8 AR-1262-1	8.225	6.920	494926	395412	6.530	0.702 #
37) L8 AR-1262-2	8.566	7.174	153766	341668	1.179	0.852 #
38) L8 AR-1262-3	8.902	7.703	76710	2910613	0.815	8.097 #
39) L8 AR-1262-4	0.000	7.761	0	1752480	N.D.	2.628 #
40) L8 AR-1262-5	9.661	8.249	50371	162624	0.989	0.574 #
41) L9 AR-1268-1	8.902	7.703	76710	2910613	0.493	2.670 #

Data Path : Z:\pestpcbsrv\HPCHEM1\ECD_P\Data\PP081325\
 Data File : PP074369.D
 Signal(s) : Signal #1: ECD1A.ch Signal #2: ECD2B.ch
 Acq On : 14 Aug 2025 00:18
 Operator : YP\AJ
 Sample : AR1242CCC500
 Misc :
 ALS Vial : 4 Sample Multiplier: 1

Instrument :
 ECD_P
 ClientSampleId :
 AR1242CCC500

Integration File signal 1: autoint1.e
 Integration File signal 2: autoint2.e
 Quant Time: Aug 14 01:51:06 2025
 Quant Method : Z:\pestpcbsrv\HPCHEM1\ECD_P\methods\PP080125.M
 Quant Title : GC EXTRACTABLES
 QLast Update : Mon Aug 04 11:01:49 2025
 Response via : Initial Calibration
 Integrator: ChemStation

Volume Inj. : 2 µl
 Signal #1 Phase : ZB-MR1 Signal #2 Phase: ZB-MR2
 Signal #1 Info : 30Mx0.32mmx 0.50µ Signal #2 Info : 30M x 0.32mm x 0.25µm

	Compound	RT#1	RT#2	Resp#1	Resp#2	ng/ml	ng/ml
42)	L9 AR-1268-2	0.000	7.761	0	1752480	N.D.	1.651 #
43)	L9 AR-1268-3	9.226	7.970	149624	786464	1.252	0.945
44)	L9 AR-1268-4	9.661	8.268	50371	143599	0.856	0.466 #
45)	L9 AR-1268-5	10.079	8.561	202584	1255783	0.576	0.492

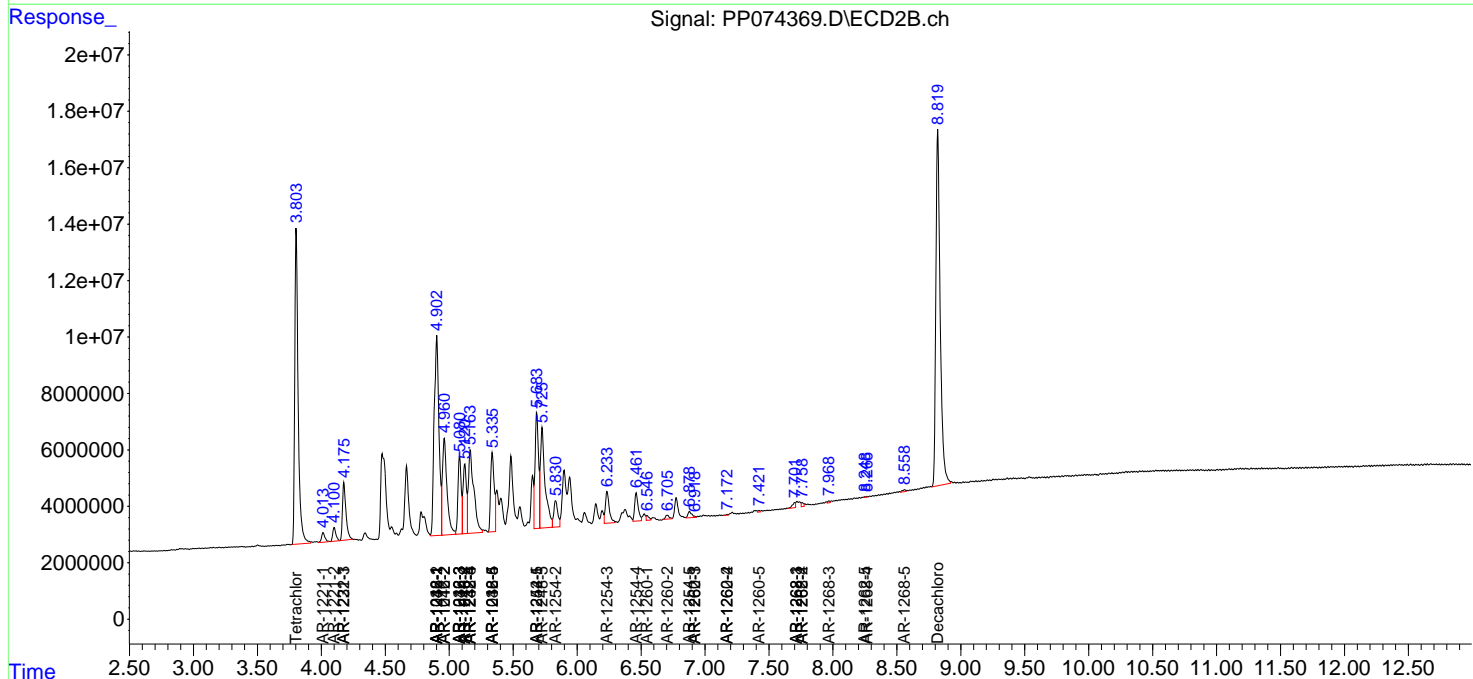
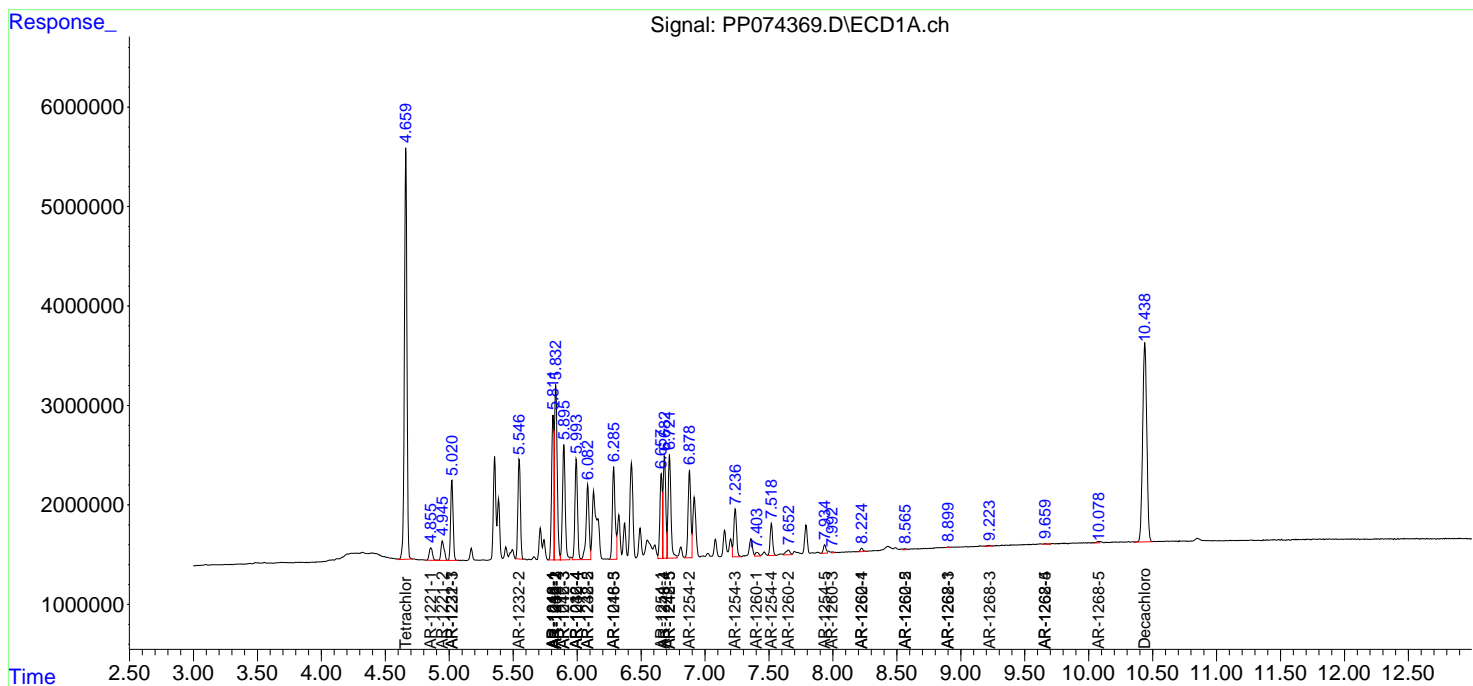
(f)=RT Delta > 1/2 Window (#)=Amounts differ by > 25% (m)=manual int.

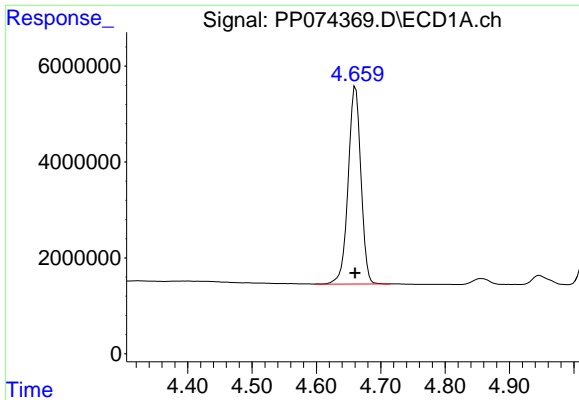
Data Path : Z:\pestpcbsrv\HPCHEM1\ECD_P\Data\PP081325\
 Data File : PP074369.D
 Signal(s) : Signal #1: ECD1A.ch Signal #2: ECD2B.ch
 Acq On : 14 Aug 2025 00:18
 Operator : YP\AJ
 Sample : AR1242CCC500
 Misc :
 ALS Vial : 4 Sample Multiplier: 1

Instrument :
 ECD_P
 ClientSampleId :
 AR1242CCC500

Integration File signal 1: autoint1.e
 Integration File signal 2: autoint2.e
 Quant Time: Aug 14 01:51:06 2025
 Quant Method : Z:\pestpcbsrv\HPCHEM1\ECD_P\methods\PP080125.M
 Quant Title : GC EXTRACTABLES
 QLast Update : Mon Aug 04 11:01:49 2025
 Response via : Initial Calibration
 Integrator: ChemStation

Volume Inj. : 2 µl
 Signal #1 Phase : ZB-MR1 Signal #2 Phase: ZB-MR2
 Signal #1 Info : 30Mx0.32mmx 0.50µ Signal #2 Info : 30M x 0.32mm x 0.25µm

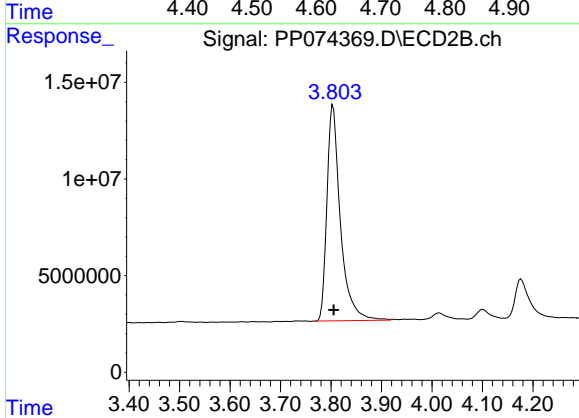




#1 Tetrachloro-m-xylene

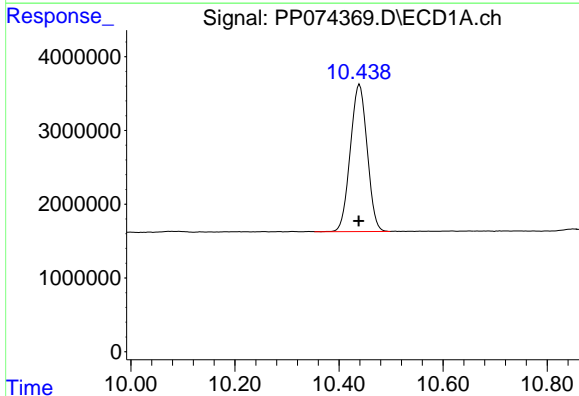
R.T.: 4.661 min
 Delta R.T.: 0.000 min
 Response: 56882606
 Conc: 50.87 ng/ml

Instrument :
 ECD_P
 ClientSampleId :
 AR1242CCC500



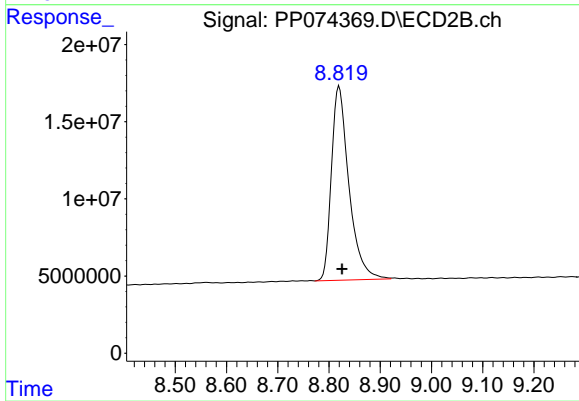
#1 Tetrachloro-m-xylene

R.T.: 3.804 min
 Delta R.T.: -0.002 min
 Response: 207441025
 Conc: 54.10 ng/ml



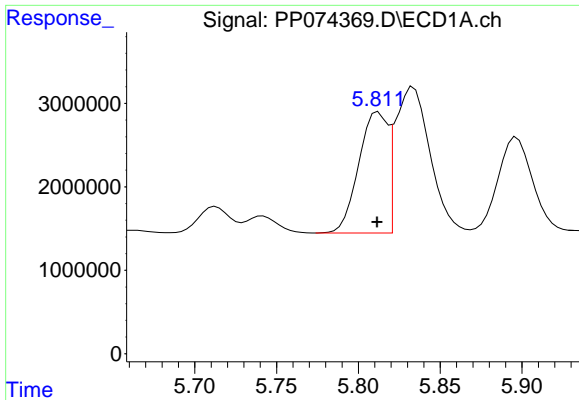
#2 Decachlorobiphenyl

R.T.: 10.440 min
 Delta R.T.: 0.002 min
 Response: 44866323
 Conc: 46.20 ng/ml



#2 Decachlorobiphenyl

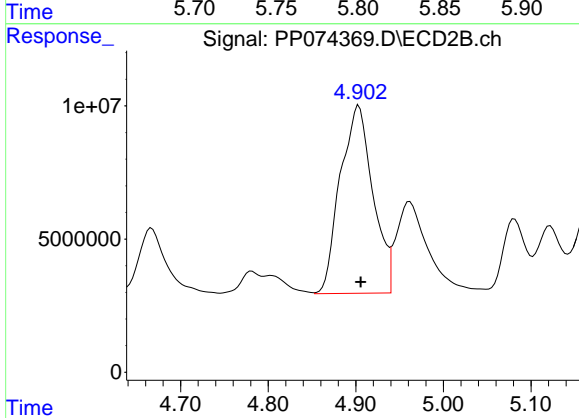
R.T.: 8.820 min
 Delta R.T.: -0.006 min
 Response: 298313721
 Conc: 49.61 ng/ml



#3 AR-1016-1

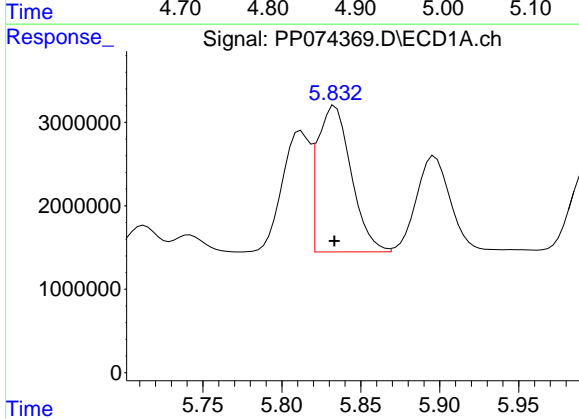
R.T.: 5.812 min
 Delta R.T.: 0.000 min
 Response: 17826073
 Conc: 432.08 ng/ml

Instrument :
 ECD_P
 ClientSampleId :
 AR1242CCC500



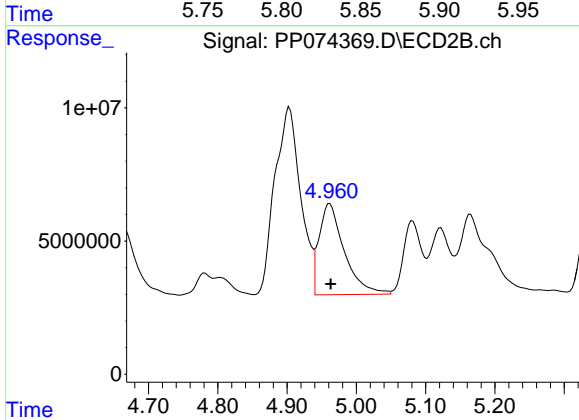
#3 AR-1016-1

R.T.: 4.903 min
 Delta R.T.: -0.002 min
 Response: 182663291
 Conc: 457.93 ng/ml



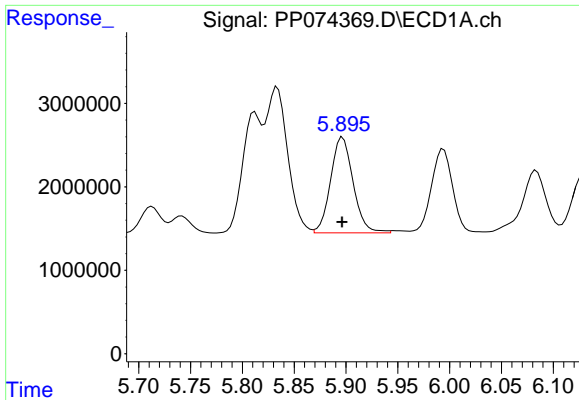
#4 AR-1016-2

R.T.: 5.834 min
 Delta R.T.: 0.000 min
 Response: 25911274
 Conc: 426.58 ng/ml



#4 AR-1016-2

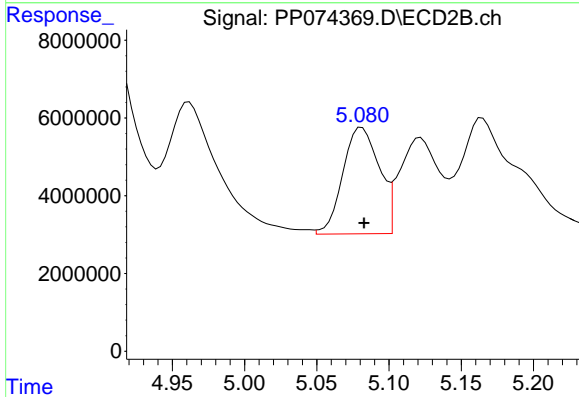
R.T.: 4.962 min
 Delta R.T.: -0.002 min
 Response: 86636737
 Conc: 461.30 ng/ml



#5 AR-1016-3

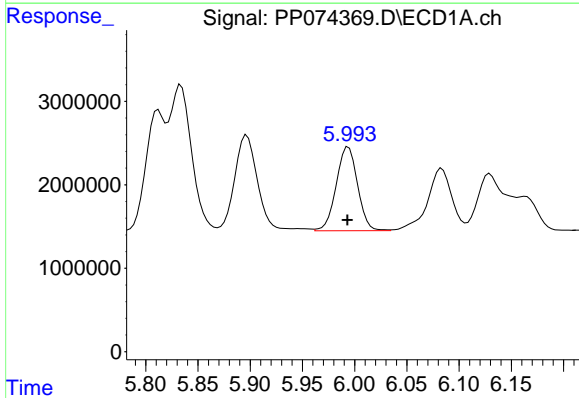
R.T.: 5.897 min
 Delta R.T.: 0.000 min
 Response: 17379154
 Conc: 438.20 ng/ml

Instrument :
 ECD_P
 ClientSampleId :
 AR1242CCC500



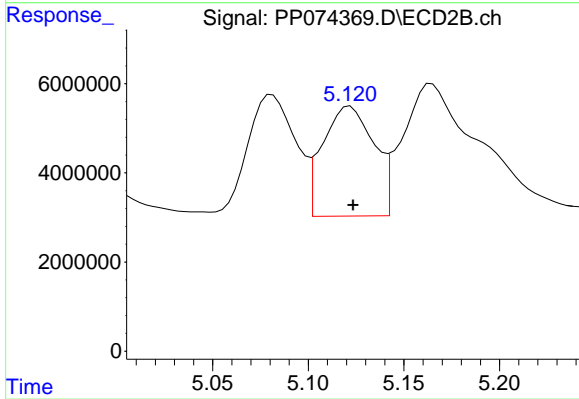
#5 AR-1016-3

R.T.: 5.081 min
 Delta R.T.: -0.001 min
 Response: 47986436
 Conc: 452.41 ng/ml



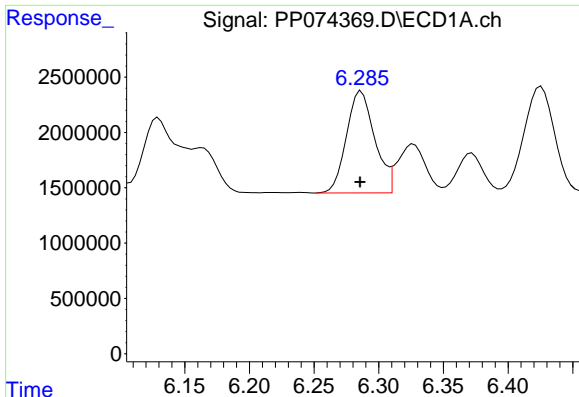
#6 AR-1016-4

R.T.: 5.994 min
 Delta R.T.: 0.001 min
 Response: 14301693
 Conc: 439.45 ng/ml



#6 AR-1016-4

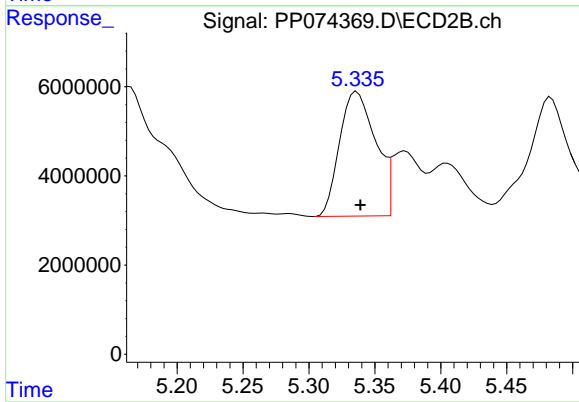
R.T.: 5.122 min
 Delta R.T.: -0.002 min
 Response: 45856604
 Conc: 419.86 ng/ml



#7 AR-1016-5

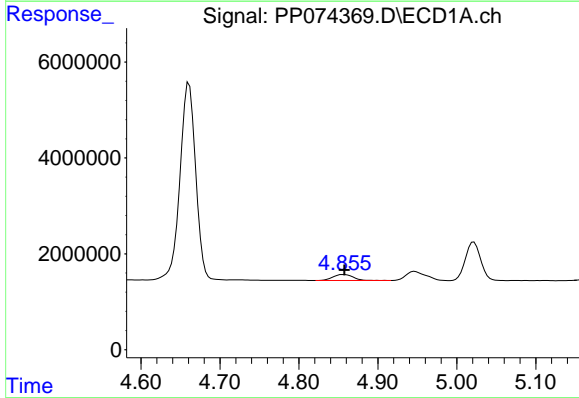
R.T.: 6.286 min
 Delta R.T.: 0.000 min
 Response: 13987871
 Conc: 430.82 ng/ml

Instrument :
 ECD_P
 ClientSampleId :
 AR1242CCC500



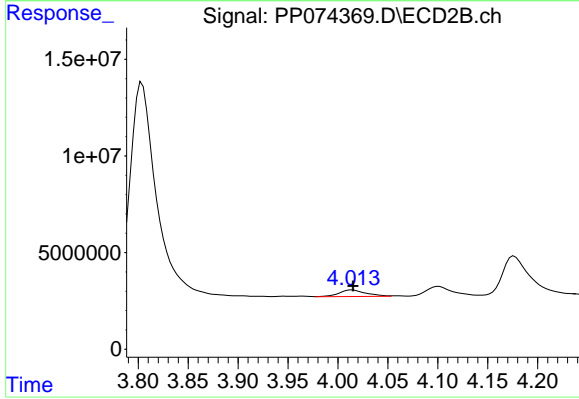
#7 AR-1016-5

R.T.: 5.336 min
 Delta R.T.: -0.003 min
 Response: 53208926
 Conc: 454.92 ng/ml



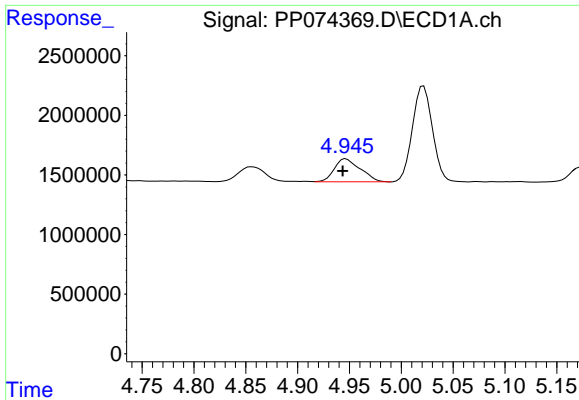
#8 AR-1221-1

R.T.: 4.856 min
 Delta R.T.: -0.002 min
 Response: 2261290
 Conc: 134.89 ng/ml



#8 AR-1221-1

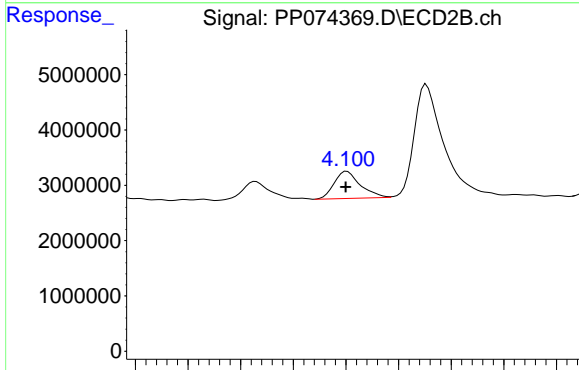
R.T.: 4.014 min
 Delta R.T.: 0.000 min
 Response: 6250845
 Conc: 127.35 ng/ml



#9 AR-1221-2

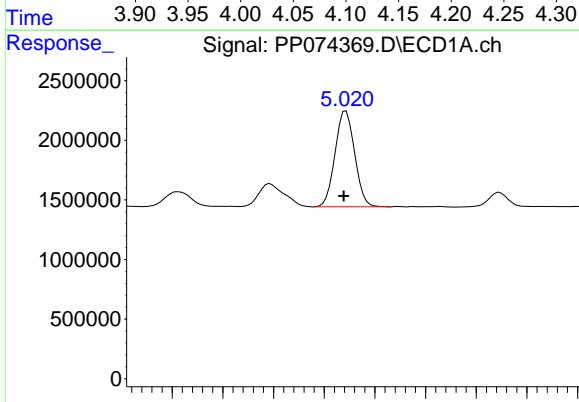
R.T.: 4.947 min
 Delta R.T.: 0.003 min
 Response: 3359883
 Conc: 266.64 ng/ml

Instrument :
 ECD_P
 ClientSampleId :
 AR1242CCC500



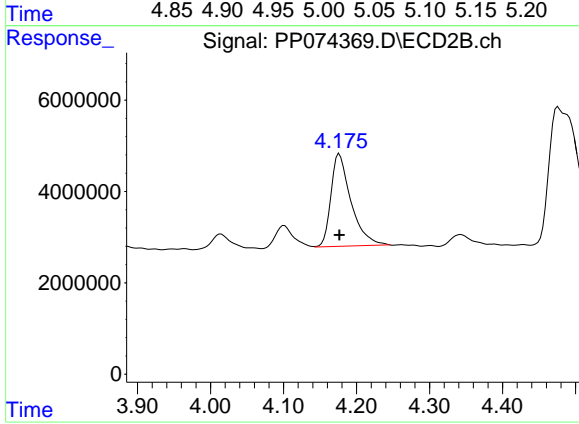
#9 AR-1221-2

R.T.: 4.101 min
 Delta R.T.: 0.001 min
 Response: 8430098
 Conc: 234.89 ng/ml



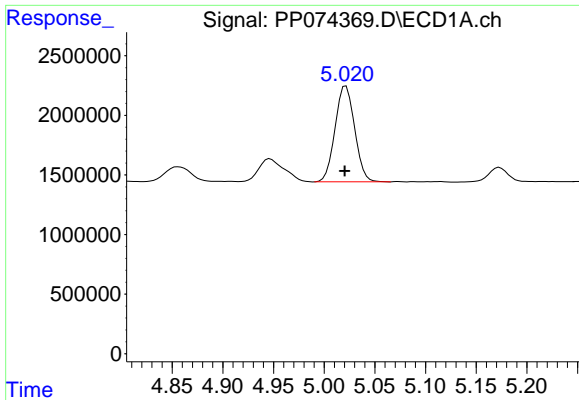
#10 AR-1221-3

R.T.: 5.021 min
 Delta R.T.: 0.002 min
 Response: 10823090
 Conc: 295.43 ng/ml



#10 AR-1221-3

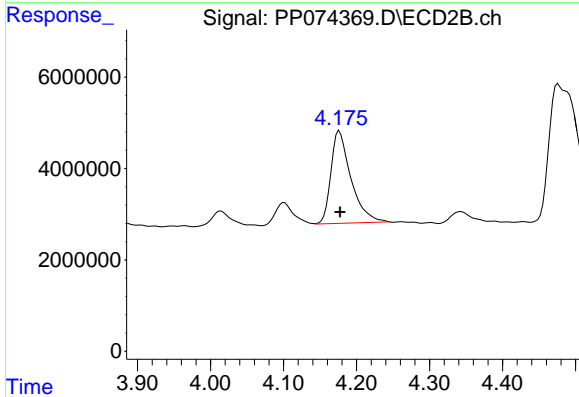
R.T.: 4.177 min
 Delta R.T.: 0.000 min
 Response: 38716766
 Conc: 286.31 ng/ml



#11 AR-1232-1

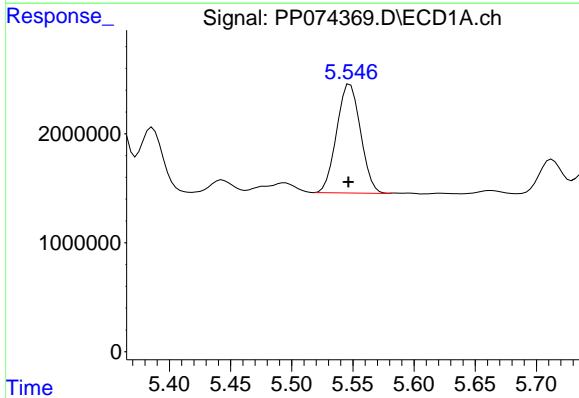
R.T.: 5.021 min
 Delta R.T.: 0.001 min
 Response: 10823090
 Conc: 372.73 ng/ml

Instrument :
 ECD_P
 ClientSampleId :
 AR1242CCC500



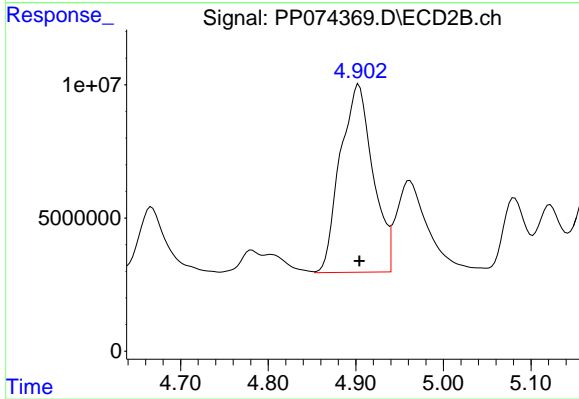
#11 AR-1232-1

R.T.: 4.177 min
 Delta R.T.: 0.000 min
 Response: 38716766
 Conc: 381.96 ng/ml



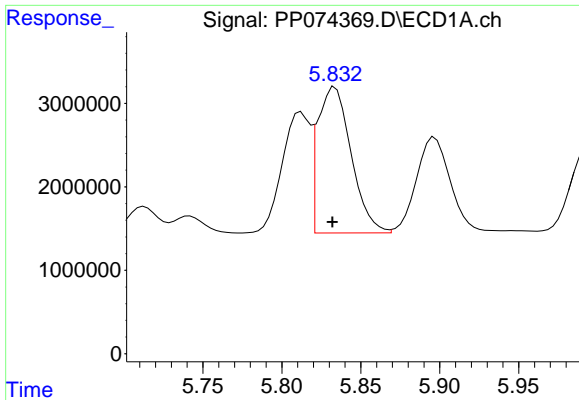
#12 AR-1232-2

R.T.: 5.548 min
 Delta R.T.: 0.001 min
 Response: 13579346
 Conc: 902.72 ng/ml



#12 AR-1232-2

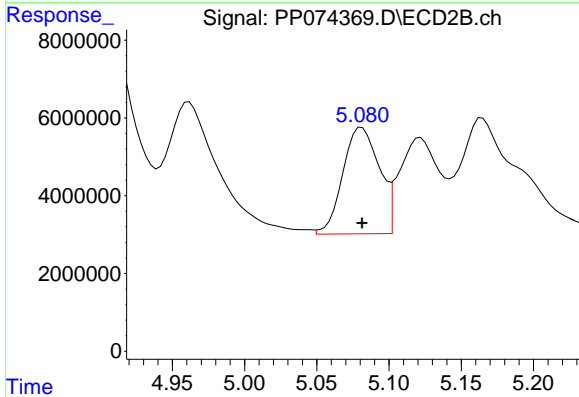
R.T.: 4.903 min
 Delta R.T.: 0.000 min
 Response: 182663291
 Conc: 1048.19 ng/ml



#13 AR-1232-3

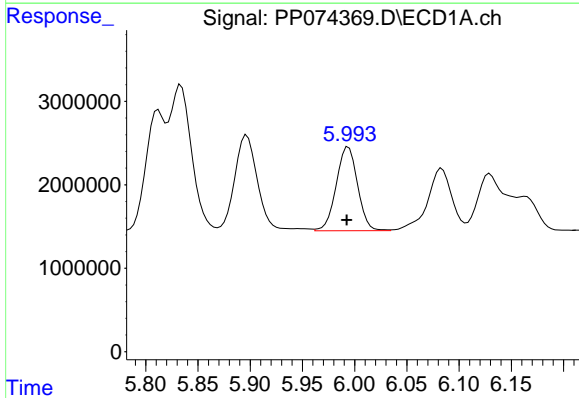
R.T.: 5.834 min
 Delta R.T.: 0.002 min
 Response: 25911274
 Conc: 893.44 ng/ml

Instrument :
 ECD_P
 ClientSampleId :
 AR1242CCC500



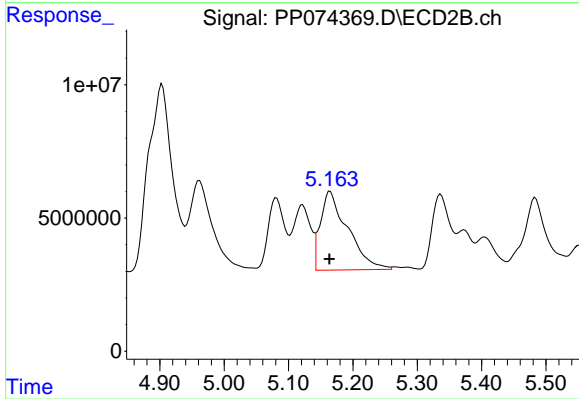
#13 AR-1232-3

R.T.: 5.081 min
 Delta R.T.: 0.000 min
 Response: 47986436
 Conc: 1047.36 ng/ml



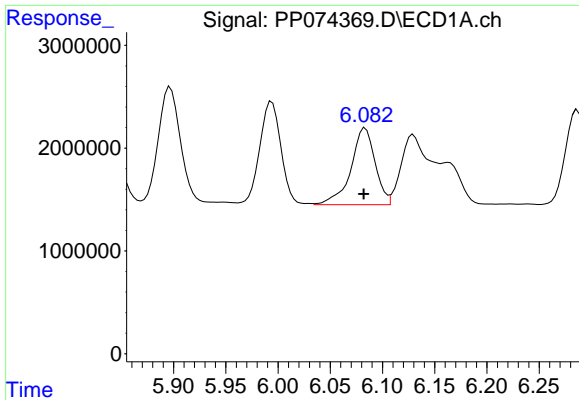
#14 AR-1232-4

R.T.: 5.994 min
 Delta R.T.: 0.002 min
 Response: 14301693
 Conc: 924.55 ng/ml



#14 AR-1232-4

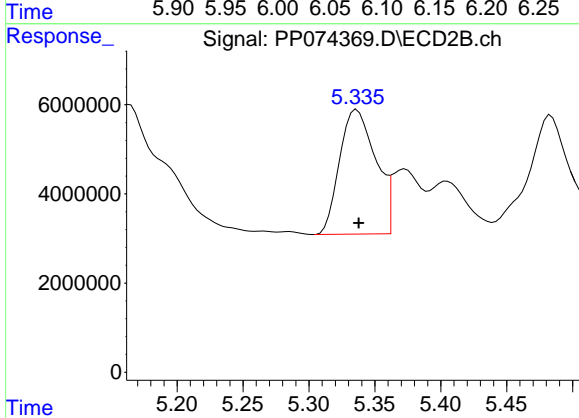
R.T.: 5.165 min
 Delta R.T.: 0.001 min
 Response: 87213437
 Conc: 1503.40 ng/ml



#15 AR-1232-5

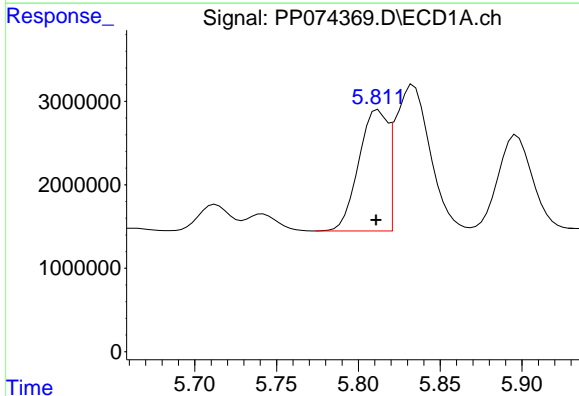
R.T.: 6.083 min
 Delta R.T.: 0.001 min
 Response: 12056058
 Conc: 1029.02 ng/ml

Instrument :
 ECD_P
 ClientSampleId :
 AR1242CCC500



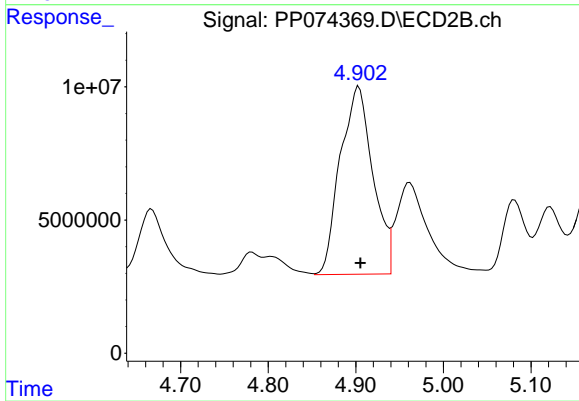
#15 AR-1232-5

R.T.: 5.336 min
 Delta R.T.: -0.001 min
 Response: 53208926
 Conc: 1132.60 ng/ml



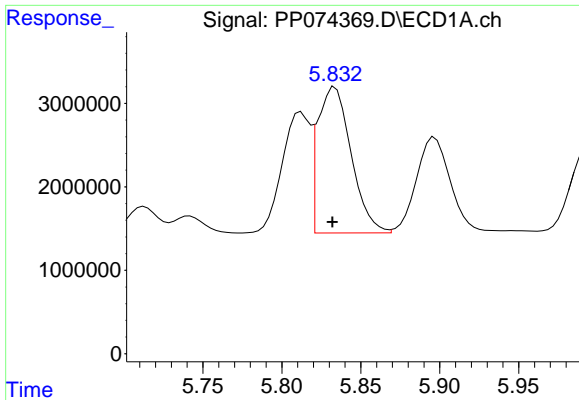
#16 AR-1242-1

R.T.: 5.812 min
 Delta R.T.: 0.001 min
 Response: 17826073
 Conc: 478.35 ng/ml



#16 AR-1242-1

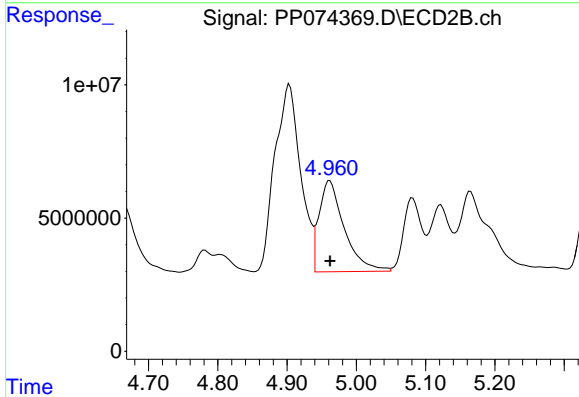
R.T.: 4.903 min
 Delta R.T.: -0.002 min
 Response: 182663291
 Conc: 529.24 ng/ml



#17 AR-1242-2

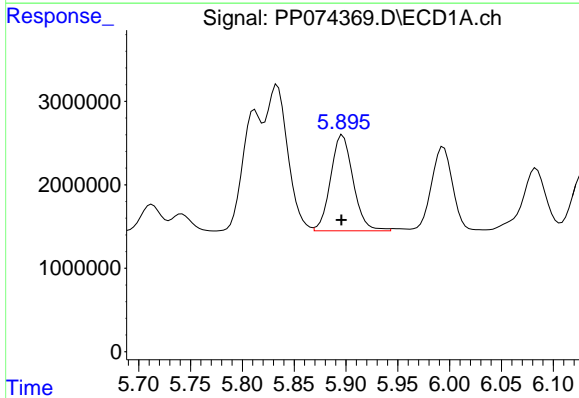
R.T.: 5.834 min
 Delta R.T.: 0.002 min
 Response: 25911274
 Conc: 476.23 ng/ml

Instrument :
 ECD_P
 ClientSampleId :
 AR1242CCC500



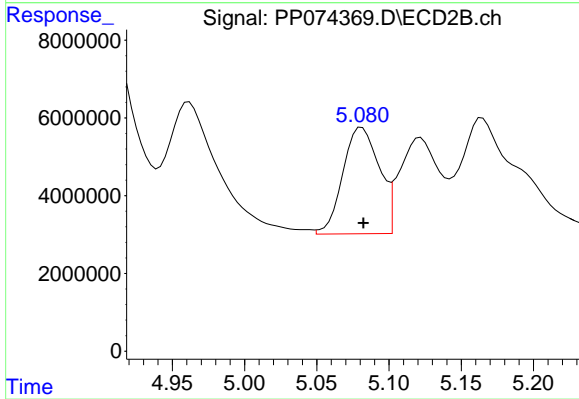
#17 AR-1242-2

R.T.: 4.962 min
 Delta R.T.: 0.000 min
 Response: 86636737
 Conc: 530.29 ng/ml



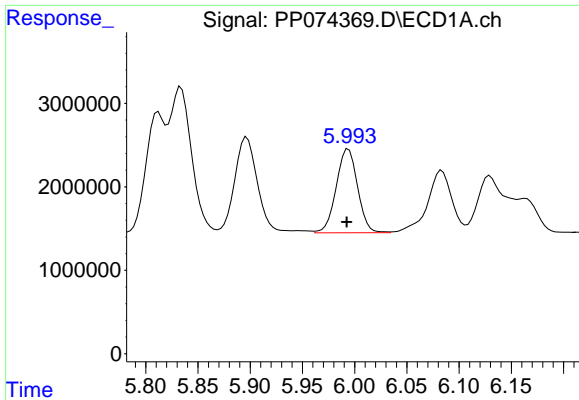
#18 AR-1242-3

R.T.: 5.897 min
 Delta R.T.: 0.001 min
 Response: 17379154
 Conc: 486.32 ng/ml



#18 AR-1242-3

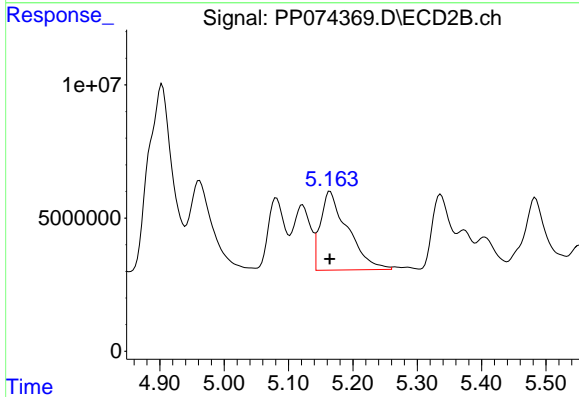
R.T.: 5.081 min
 Delta R.T.: 0.000 min
 Response: 47986436
 Conc: 520.19 ng/ml



#19 AR-1242-4

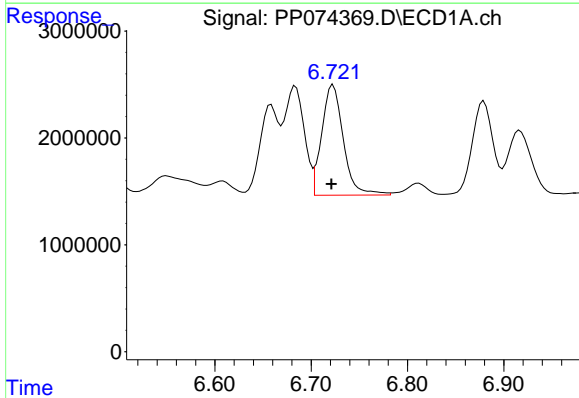
R.T.: 5.994 min
 Delta R.T.: 0.002 min
 Response: 14301693
 Conc: 489.47 ng/ml

Instrument :
 ECD_P
 ClientSampleId :
 AR1242CCC500



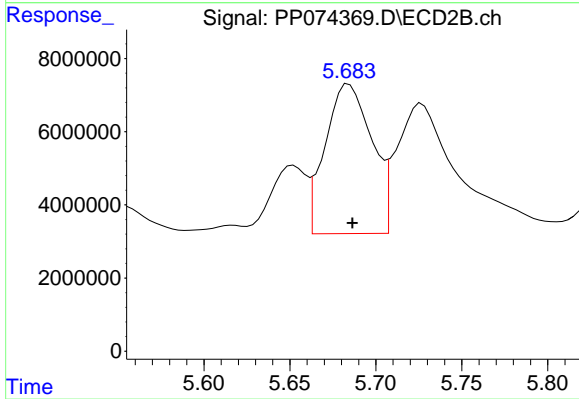
#19 AR-1242-4

R.T.: 5.165 min
 Delta R.T.: 0.000 min
 Response: 87213437
 Conc: 730.30 ng/ml



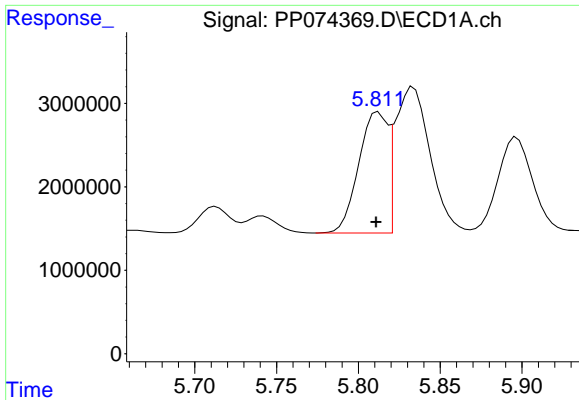
#20 AR-1242-5

R.T.: 6.723 min
 Delta R.T.: 0.002 min
 Response: 16125786
 Conc: 453.51 ng/ml



#20 AR-1242-5

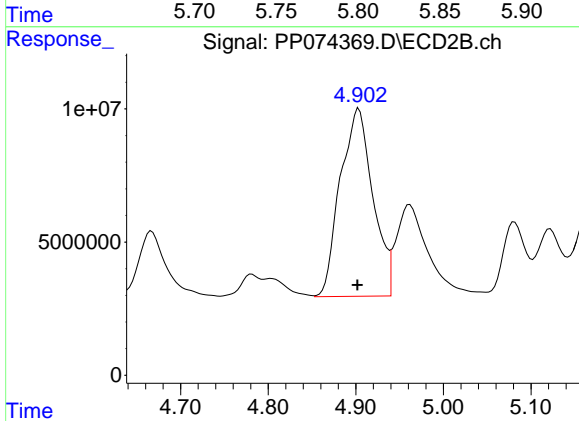
R.T.: 5.684 min
 Delta R.T.: -0.002 min
 Response: 77333838
 Conc: 517.08 ng/ml



#21 AR-1248-1

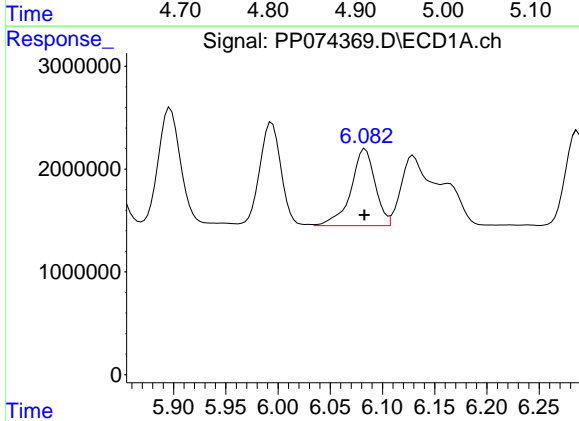
R.T.: 5.812 min
 Delta R.T.: 0.001 min
 Response: 17826073
 Conc: 636.32 ng/ml

Instrument :
 ECD_P
 ClientSampleId :
 AR1242CCC500



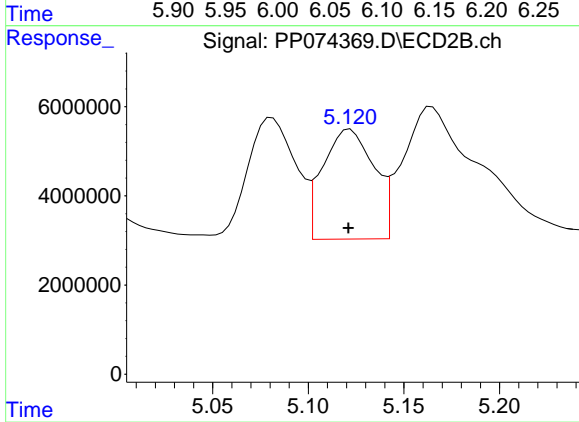
#21 AR-1248-1

R.T.: 4.903 min
 Delta R.T.: 0.002 min
 Response: 182663291
 Conc: 853.84 ng/ml



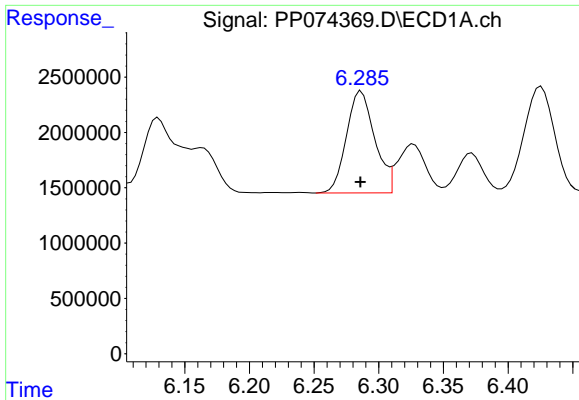
#22 AR-1248-2

R.T.: 6.083 min
 Delta R.T.: 0.000 min
 Response: 12056058
 Conc: 299.45 ng/ml



#22 AR-1248-2

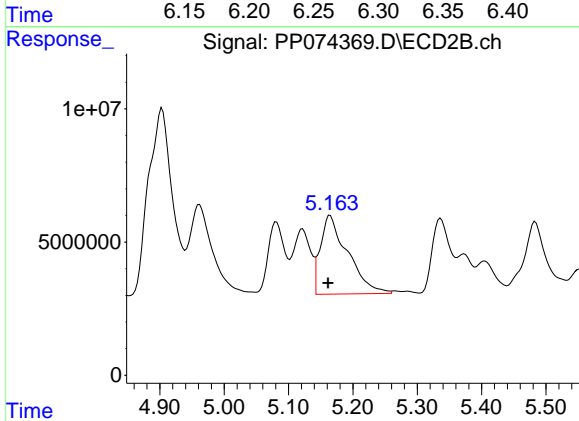
R.T.: 5.122 min
 Delta R.T.: 0.001 min
 Response: 45856604
 Conc: 313.42 ng/ml



#23 AR-1248-3

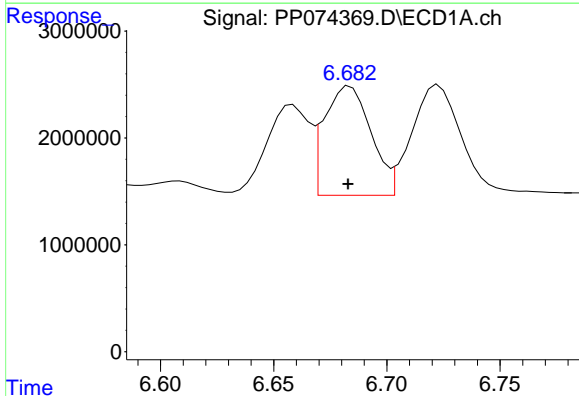
R.T.: 6.286 min
 Delta R.T.: 0.000 min
 Response: 13987871
 Conc: 313.82 ng/ml

Instrument :
 ECD_P
 ClientSampleId :
 AR1242CCC500



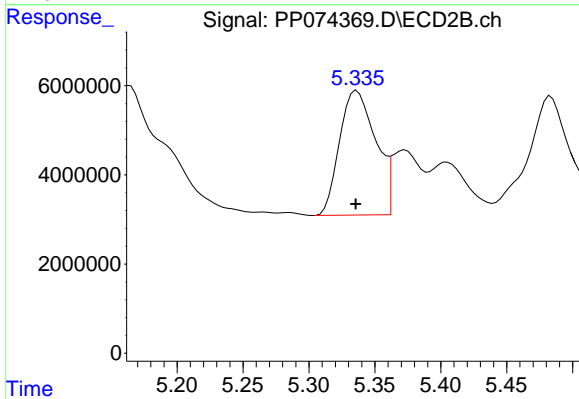
#23 AR-1248-3

R.T.: 5.165 min
 Delta R.T.: 0.003 min
 Response: 87213437
 Conc: 508.65 ng/ml



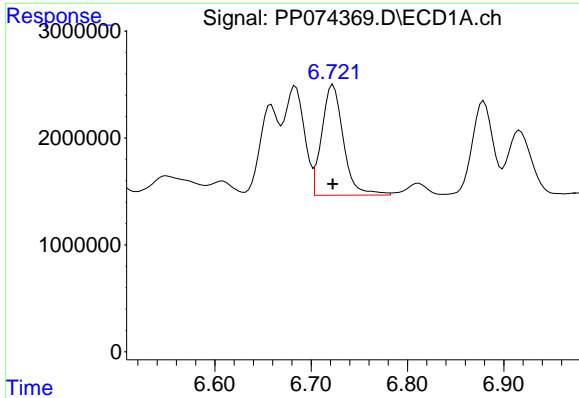
#24 AR-1248-4

R.T.: 6.684 min
 Delta R.T.: 0.000 min
 Response: 14647997
 Conc: 281.49 ng/ml



#24 AR-1248-4

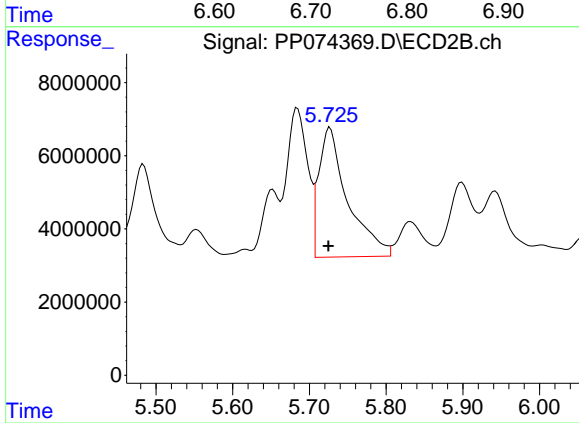
R.T.: 5.336 min
 Delta R.T.: 0.001 min
 Response: 53208926
 Conc: 319.82 ng/ml



#25 AR-1248-5

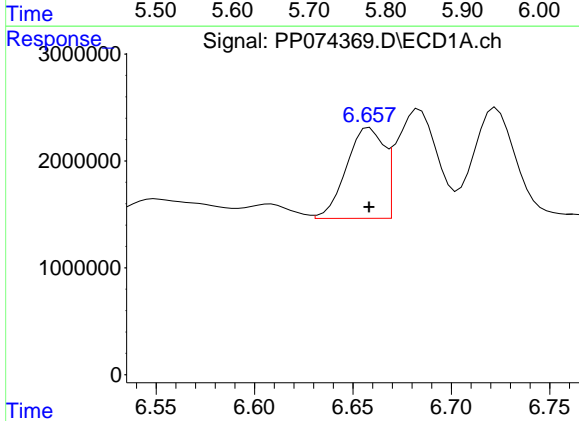
R.T.: 6.723 min
 Delta R.T.: 0.000 min
 Response: 16125786
 Conc: 283.19 ng/ml

Instrument :
 ECD_P
 ClientSampleId :
 AR1242CCC500



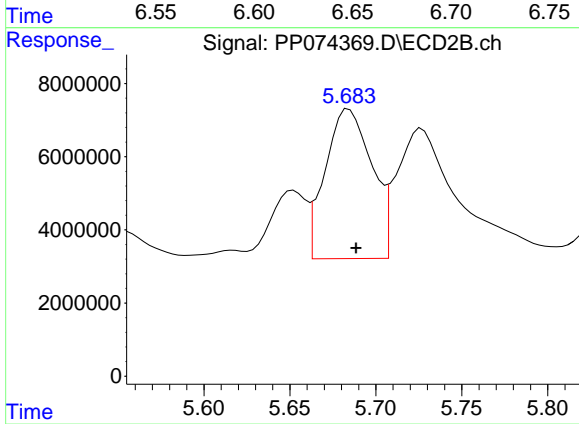
#25 AR-1248-5

R.T.: 5.727 min
 Delta R.T.: 0.002 min
 Response: 92716480
 Conc: 318.65 ng/ml



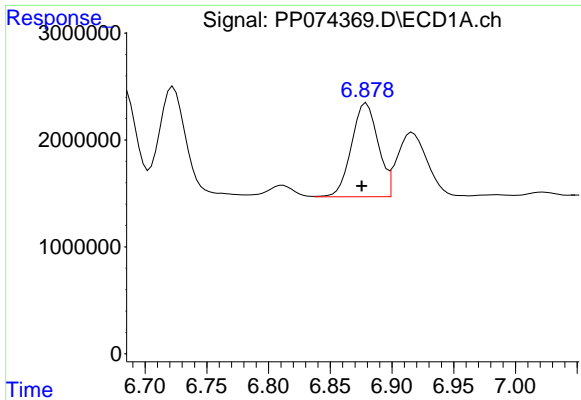
#26 AR-1254-1

R.T.: 6.658 min
 Delta R.T.: 0.000 min
 Response: 11189122
 Conc: 212.56 ng/ml



#26 AR-1254-1

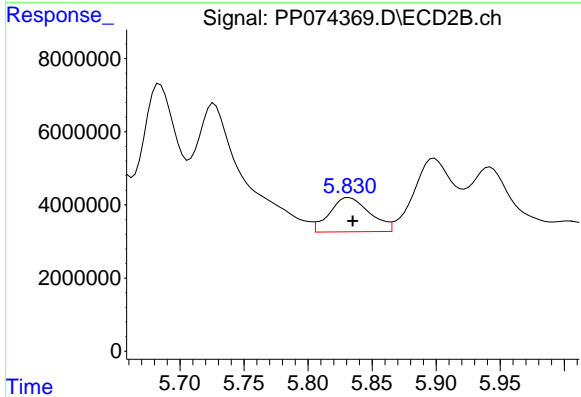
R.T.: 5.684 min
 Delta R.T.: -0.004 min
 Response: 77333838
 Conc: 211.19 ng/ml



#27 AR-1254-2

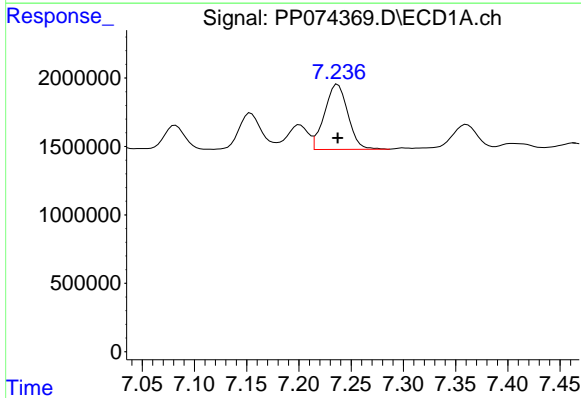
R.T.: 6.879 min
 Delta R.T.: 0.004 min
 Response: 13142419
 Conc: 165.30 ng/ml

Instrument :
 ECD_P
 ClientSampleId :
 AR1242CCC500



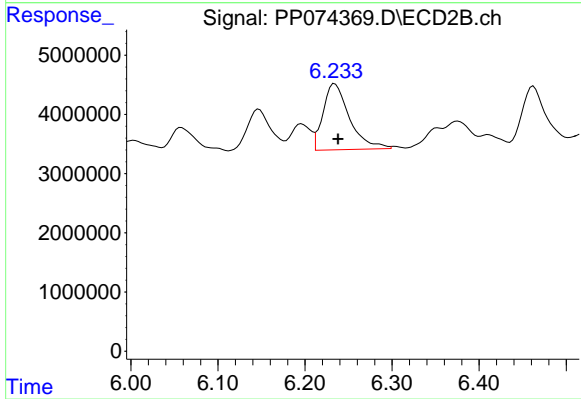
#27 AR-1254-2

R.T.: 5.832 min
 Delta R.T.: -0.003 min
 Response: 20415481
 Conc: 73.38 ng/ml



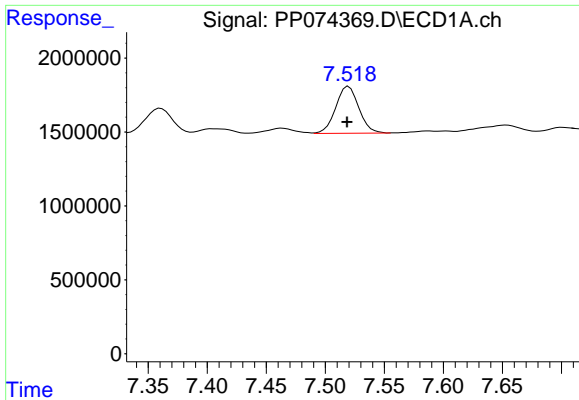
#28 AR-1254-3

R.T.: 7.237 min
 Delta R.T.: 0.000 min
 Response: 7406413
 Conc: 84.82 ng/ml



#28 AR-1254-3

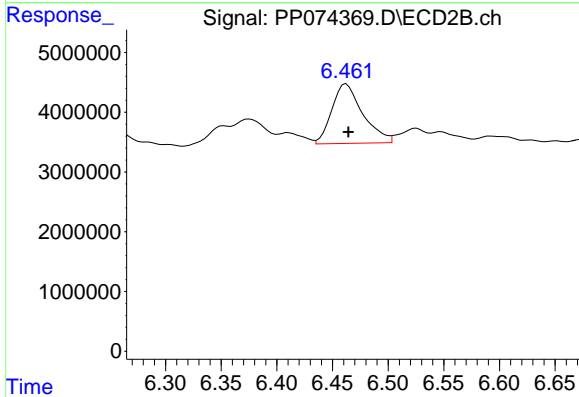
R.T.: 6.234 min
 Delta R.T.: -0.004 min
 Response: 23632491
 Conc: 48.31 ng/ml



#29 AR-1254-4

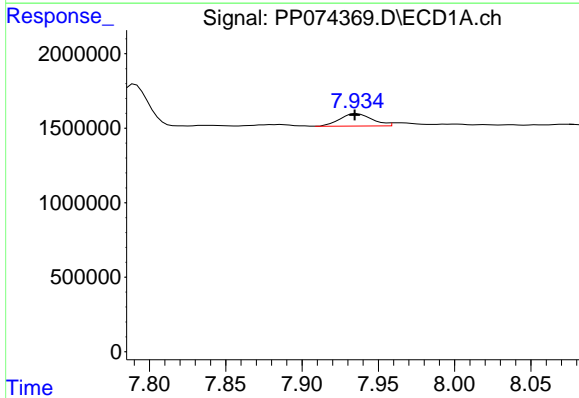
R.T.: 7.520 min
 Delta R.T.: 0.002 min
 Response: 4305837
 Conc: 67.48 ng/ml

Instrument :
 ECD_P
 ClientSampleId :
 AR1242CCC500



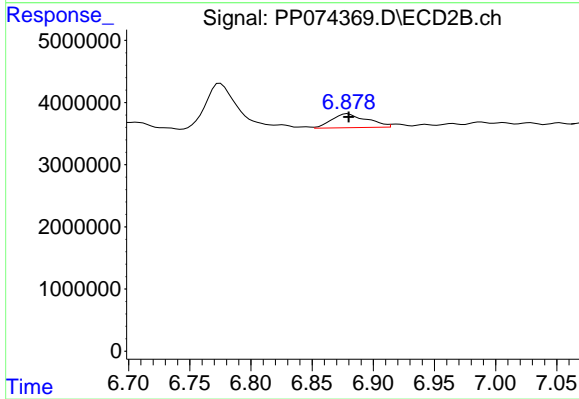
#29 AR-1254-4

R.T.: 6.462 min
 Delta R.T.: -0.002 min
 Response: 19285117
 Conc: 52.47 ng/ml



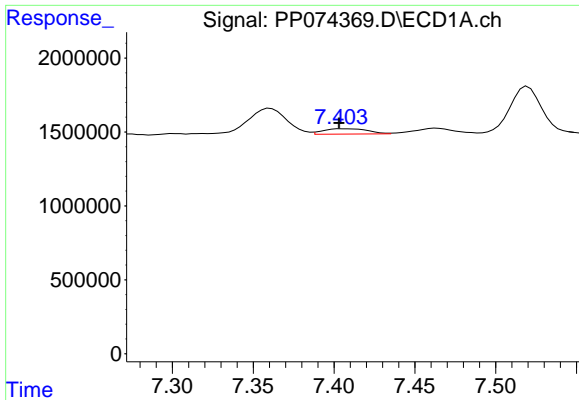
#30 AR-1254-5

R.T.: 7.936 min
 Delta R.T.: 0.001 min
 Response: 1224404
 Conc: 15.09 ng/ml



#30 AR-1254-5

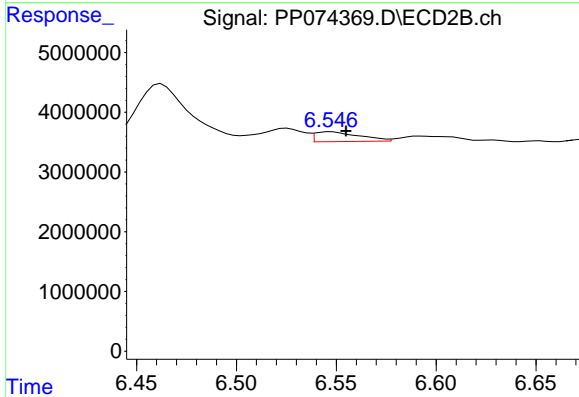
R.T.: 6.879 min
 Delta R.T.: 0.000 min
 Response: 4456807
 Conc: 11.57 ng/ml



#31 AR-1260-1

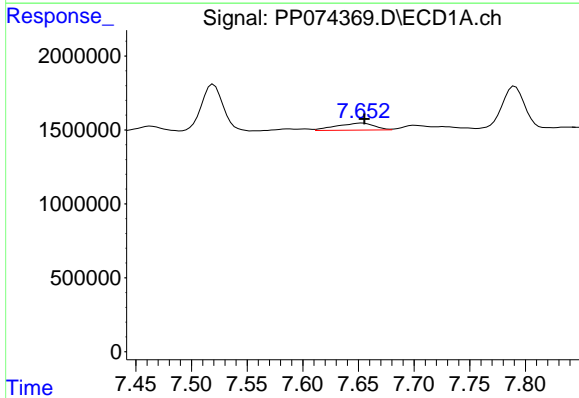
R.T.: 7.405 min
 Delta R.T.: 0.002 min
 Response: 685654
 Conc: 12.17 ng/ml

Instrument :
 ECD_P
 ClientSampleId :
 AR1242CCC500



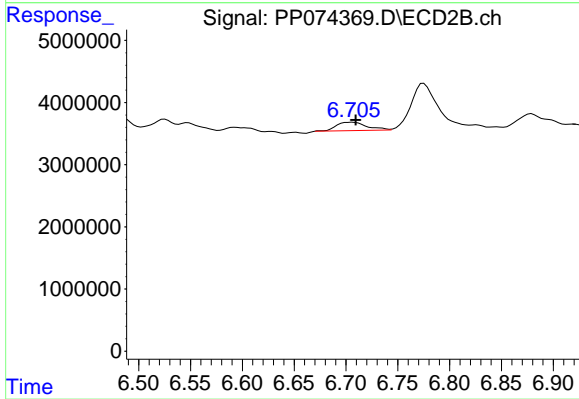
#31 AR-1260-1

R.T.: 6.547 min
 Delta R.T.: -0.007 min
 Response: 2572710
 Conc: 6.37 ng/ml



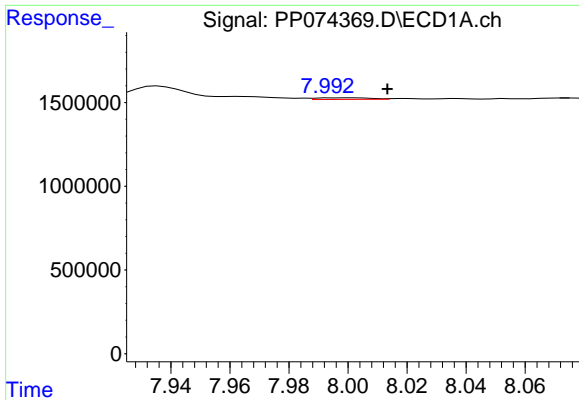
#32 AR-1260-2

R.T.: 7.653 min
 Delta R.T.: -0.002 min
 Response: 1122068
 Conc: 16.46 ng/ml



#32 AR-1260-2

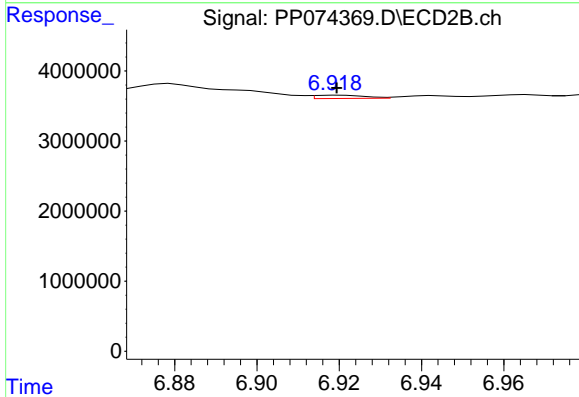
R.T.: 6.706 min
 Delta R.T.: -0.003 min
 Response: 2827720
 Conc: 9.04 ng/ml



#33 AR-1260-3

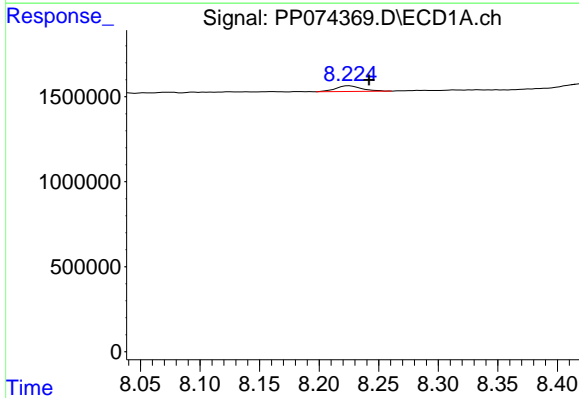
R.T.: 8.001 min
 Delta R.T.: -0.013 min
 Response: 122537
 Conc: 2.30 ng/ml

Instrument :
 ECD_P
 ClientSampleId :
 AR1242CCC500



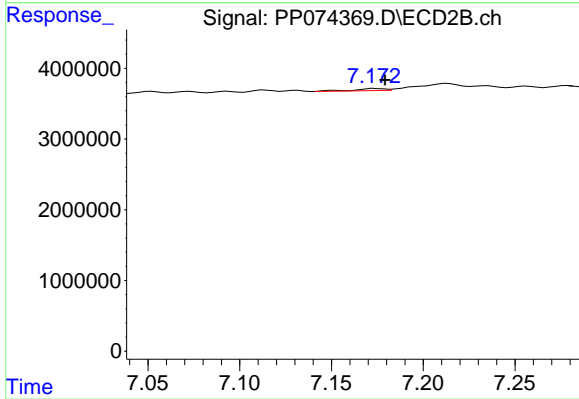
#33 AR-1260-3

R.T.: 6.920 min
 Delta R.T.: 0.000 min
 Response: 395412
 Conc: 1.00 ng/ml



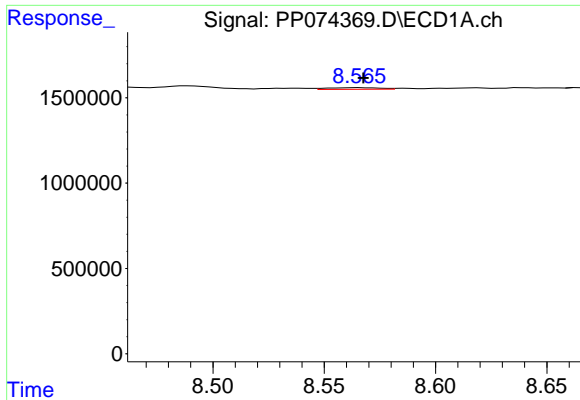
#34 AR-1260-4

R.T.: 8.225 min
 Delta R.T.: -0.017 min
 Response: 494926
 Conc: 7.90 ng/ml



#34 AR-1260-4

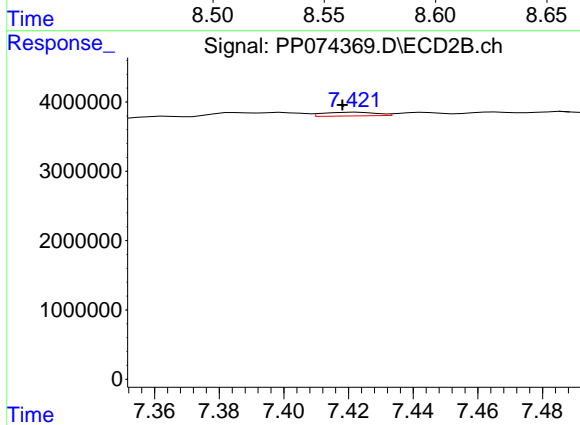
R.T.: 7.174 min
 Delta R.T.: -0.005 min
 Response: 341668
 Conc: 1.17 ng/ml



#35 AR-1260-5

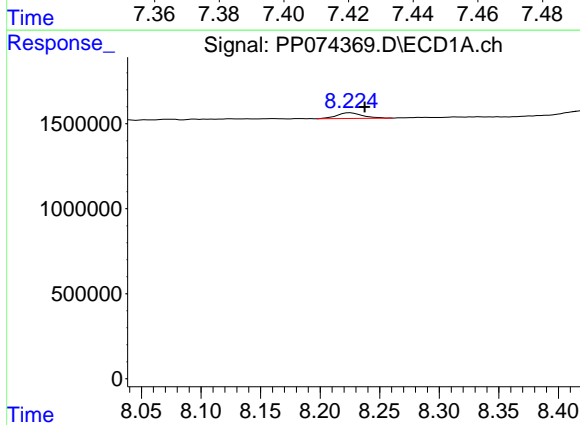
R.T.: 8.566 min
 Delta R.T.: -0.002 min
 Response: 153766
 Conc: 1.36 ng/ml

Instrument :
 ECD_P
 ClientSampleId :
 AR1242CCC500



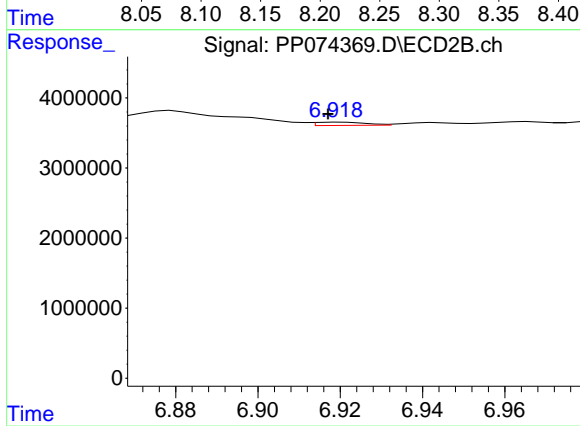
#35 AR-1260-5

R.T.: 7.422 min
 Delta R.T.: 0.004 min
 Response: 606272
 Conc: 0.80 ng/ml



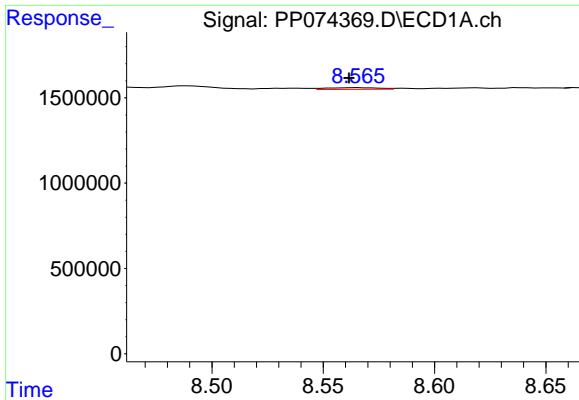
#36 AR-1262-1

R.T.: 8.225 min
 Delta R.T.: -0.012 min
 Response: 494926
 Conc: 6.53 ng/ml



#36 AR-1262-1

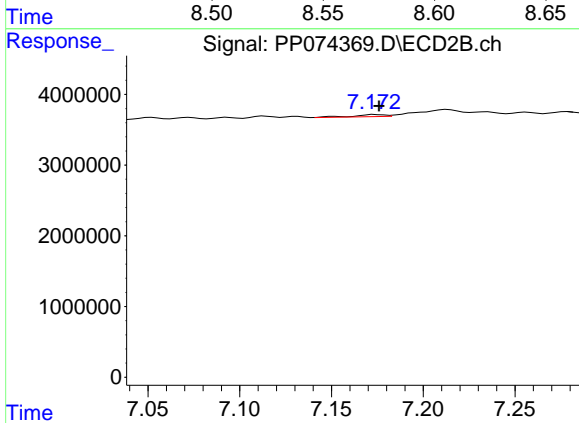
R.T.: 6.920 min
 Delta R.T.: 0.003 min
 Response: 395412
 Conc: 0.70 ng/ml



#37 AR-1262-2

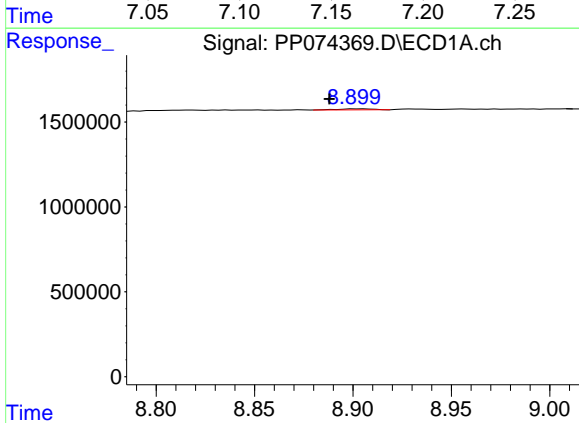
R.T.: 8.566 min
 Delta R.T.: 0.004 min
 Response: 153766
 Conc: 1.18 ng/ml

Instrument :
 ECD_P
 ClientSampleId :
 AR1242CCC500



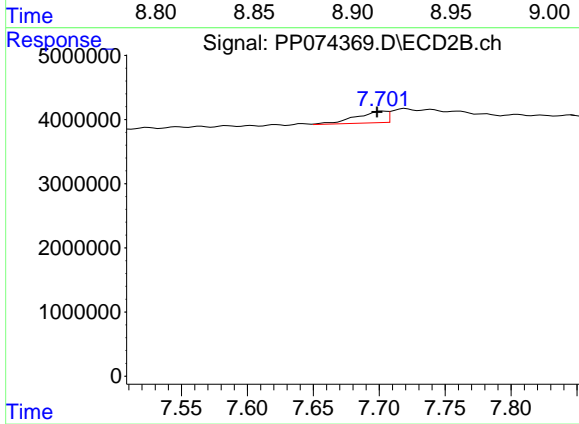
#37 AR-1262-2

R.T.: 7.174 min
 Delta R.T.: -0.002 min
 Response: 341668
 Conc: 0.85 ng/ml



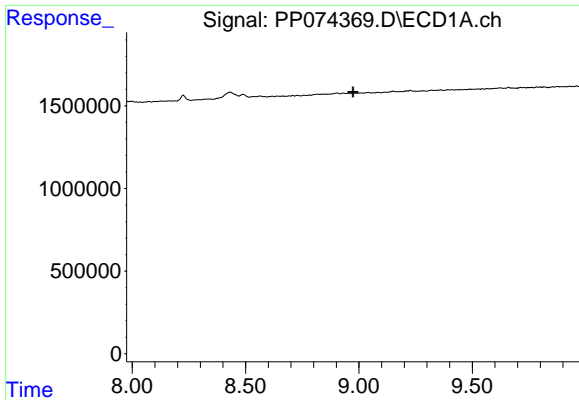
#38 AR-1262-3

R.T.: 8.902 min
 Delta R.T.: 0.014 min
 Response: 76710
 Conc: 0.82 ng/ml



#38 AR-1262-3

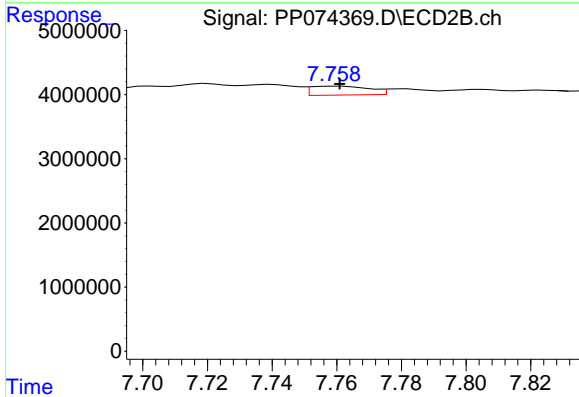
R.T.: 7.703 min
 Delta R.T.: 0.004 min
 Response: 2910613
 Conc: 8.10 ng/ml



#39 AR-1262-4

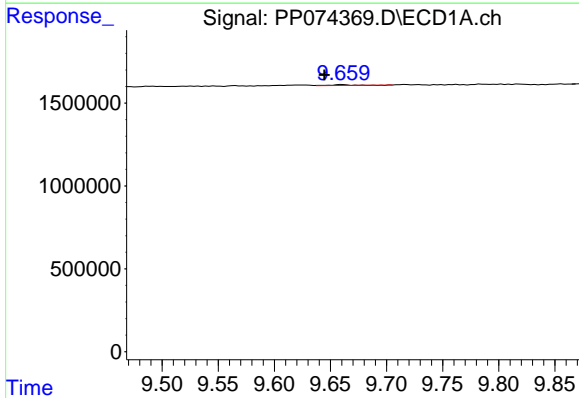
R.T.: 0.000 min
 Exp R.T.: 8.974 min
 Response: 0
 Conc: N.D.

Instrument :
 ECD_P
 ClientSampleId :
 AR1242CCC500



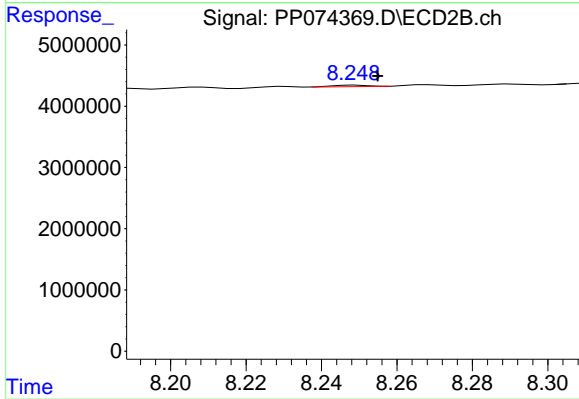
#39 AR-1262-4

R.T.: 7.761 min
 Delta R.T.: 0.000 min
 Response: 1752480
 Conc: 2.63 ng/ml



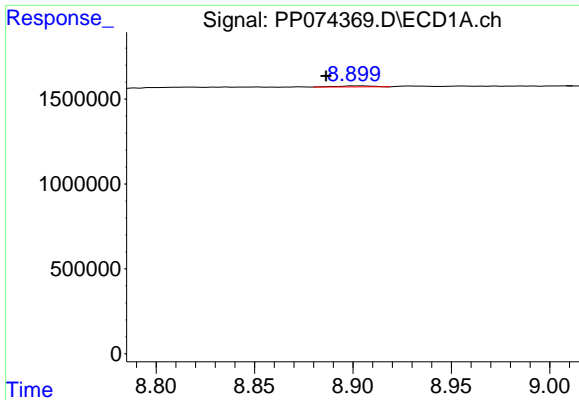
#40 AR-1262-5

R.T.: 9.661 min
 Delta R.T.: 0.016 min
 Response: 50371
 Conc: 0.99 ng/ml



#40 AR-1262-5

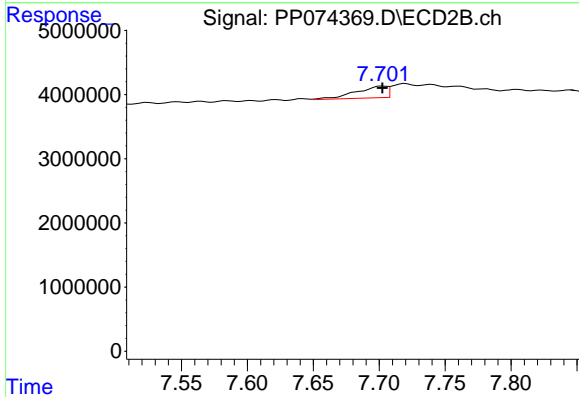
R.T.: 8.249 min
 Delta R.T.: -0.006 min
 Response: 162624
 Conc: 0.57 ng/ml



#41 AR-1268-1

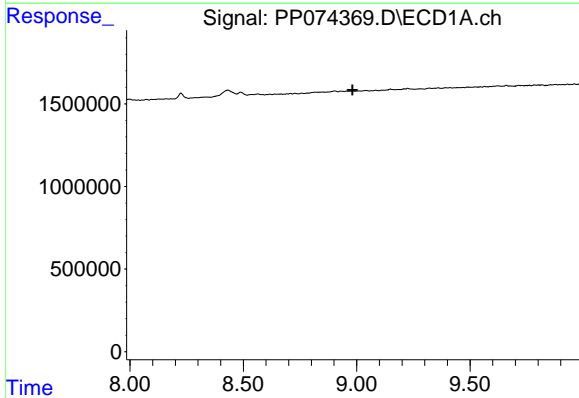
R.T.: 8.902 min
 Delta R.T.: 0.015 min
 Response: 76710
 Conc: 0.49 ng/ml

Instrument :
 ECD_P
 ClientSampleId :
 AR1242CCC500



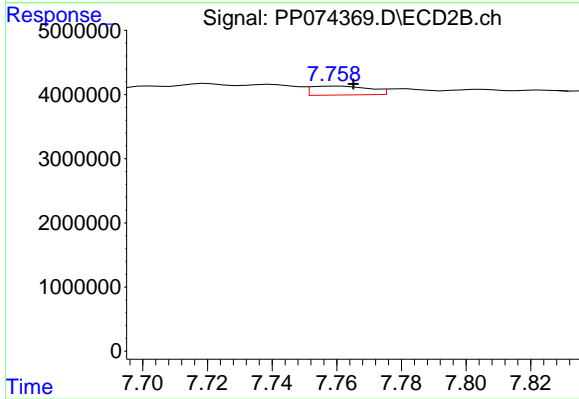
#41 AR-1268-1

R.T.: 7.703 min
 Delta R.T.: 0.000 min
 Response: 2910613
 Conc: 2.67 ng/ml



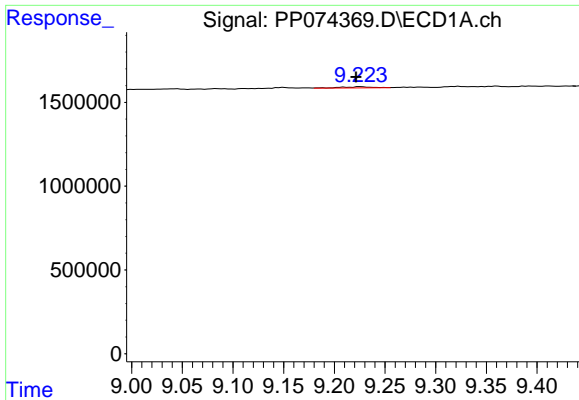
#42 AR-1268-2

R.T.: 0.000 min
 Exp R.T. : 8.982 min
 Response: 0
 Conc: N.D.



#42 AR-1268-2

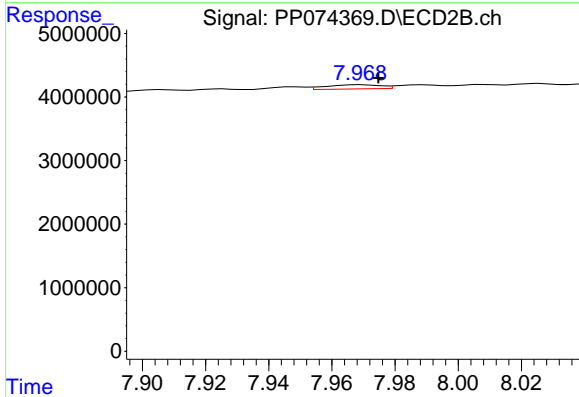
R.T.: 7.761 min
 Delta R.T.: -0.005 min
 Response: 1752480
 Conc: 1.65 ng/ml



#43 AR-1268-3

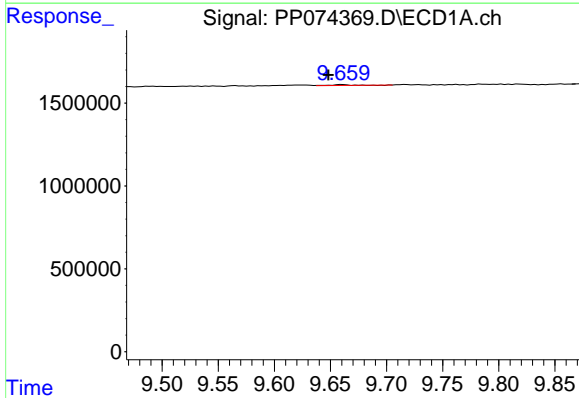
R.T.: 9.226 min
 Delta R.T.: 0.004 min
 Response: 149624
 Conc: 1.25 ng/ml

Instrument :
 ECD_P
 ClientSampleId :
 AR1242CCC500



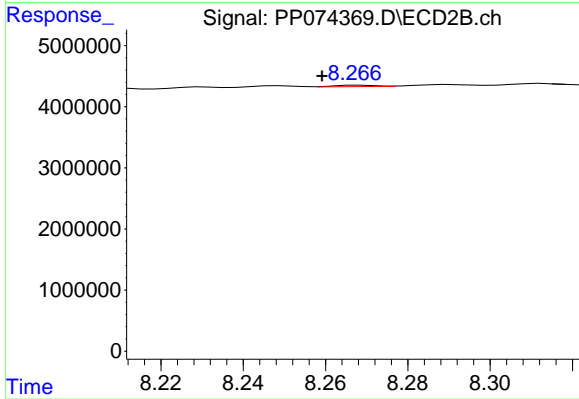
#43 AR-1268-3

R.T.: 7.970 min
 Delta R.T.: -0.005 min
 Response: 786464
 Conc: 0.95 ng/ml



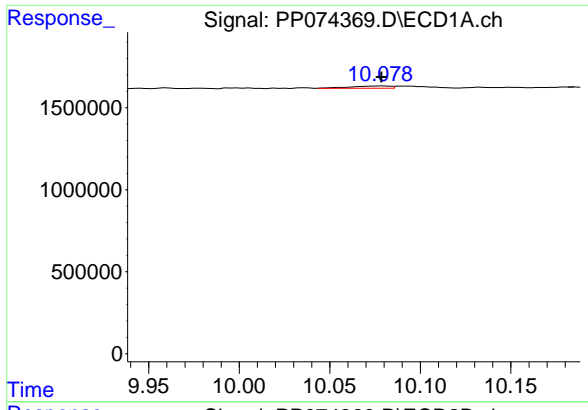
#44 AR-1268-4

R.T.: 9.661 min
 Delta R.T.: 0.013 min
 Response: 50371
 Conc: 0.86 ng/ml



#44 AR-1268-4

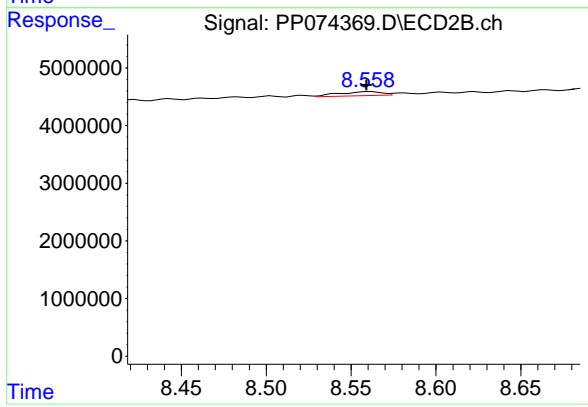
R.T.: 8.268 min
 Delta R.T.: 0.009 min
 Response: 143599
 Conc: 0.47 ng/ml



#45 AR-1268-5

R.T.: 10.079 min
Delta R.T.: 0.000 min
Response: 202584
Conc: 0.58 ng/ml

Instrument :
ECD_P
ClientSampleId :
AR1242CCC500



#45 AR-1268-5

R.T.: 8.561 min
Delta R.T.: 0.002 min
Response: 1255783
Conc: 0.49 ng/ml