

Data Path : Z:\pestpcbsrv\HPCHEM1\ECD_P\Data\PP081325\
 Data File : PP074370.D
 Signal(s) : Signal #1: ECD1A.ch Signal #2: ECD2B.ch
 Acq On : 14 Aug 2025 00:35
 Operator : YP\AJ
 Sample : AR1254CCC500
 Misc :
 ALS Vial : 5 Sample Multiplier: 1

Instrument :
 ECD_P
 ClientSampleId :
 AR1254CCC500

Integration File signal 1: autoint1.e
 Integration File signal 2: autoint2.e
 Quant Time: Aug 14 01:51:19 2025
 Quant Method : Z:\pestpcbsrv\HPCHEM1\ECD_P\methods\PP080125.M
 Quant Title : GC EXTRACTABLES
 QLast Update : Mon Aug 04 11:01:49 2025
 Response via : Initial Calibration
 Integrator: ChemStation

Volume Inj. : 2 µl
 Signal #1 Phase : ZB-MR1 Signal #2 Phase: ZB-MR2
 Signal #1 Info : 30Mx0.32mmx 0.50µ Signal #2 Info : 30M x 0.32mm x 0.25µm

Compound	RT#1	RT#2	Resp#1	Resp#2	ng/ml	ng/ml
System Monitoring Compounds						
1) SA Tetrachlo...	4.658	3.801	58831059	225.9E6	52.607	58.911
2) SA Decachlor...	10.437	8.818	47052003	319.3E6	48.449	53.095
Target Compounds						
3) L1 AR-1016-1	5.809	4.893	789743	4040404	19.142	10.129 #
4) L1 AR-1016-2	5.833	4.960	1050125	1071211	17.288	5.704 #
5) L1 AR-1016-3	5.896	5.078	883439	1057098	22.275	9.966 #
6) L1 AR-1016-4	5.990	5.120	540075	65534552	16.595	600.023 #
7) L1 AR-1016-5	6.284	5.333	9621914	40975840	296.350	350.331
8) L2 AR-1221-1	0.000	4.018	0	496508	N.D.	10.115 #
9) L2 AR-1221-2	4.960	4.099	1201716	2810761	95.366	78.317
10) L2 AR-1221-3	5.020	4.180	248996	893812	6.797	6.610
11) L3 AR-1232-1	5.020	4.180	248996	893812	8.575	8.818
12) L3 AR-1232-2	5.545	4.893	329411	4040404	21.898	23.185
13) L3 AR-1232-3	5.833	5.078	1050125	1057098	36.209	23.072 #
14) L3 AR-1232-4	5.990	5.157	540075	32936022	34.914	567.758 #
15) L3 AR-1232-5	6.081	5.333	15430467	40975840	1317.041	872.208 #
16) L4 AR-1242-1	5.809	4.893	789743	4040404	21.192	11.707 #
17) L4 AR-1242-2	5.833	4.960	1050125	1071211	19.301	6.557 #
18) L4 AR-1242-3	5.896	5.078	883439	1057098	24.721	11.459 #
19) L4 AR-1242-4	5.990	5.157	540075	32936022	18.484	275.796 #
20) L4 AR-1242-5	6.725	5.684	9924235	208.5E6	279.100	1394.099 #
21) L5 AR-1248-1	5.809	4.893	789743	4040404	28.190	18.886 #
22) L5 AR-1248-2	6.081	5.120	15430467	65534552	383.260	447.908
23) L5 AR-1248-3	6.284	5.157	9621914	32936022	215.866	192.092
24) L5 AR-1248-4	6.659	5.333	39798639	40975840	764.812	246.288 #
25) L5 AR-1248-5	6.725	5.684	9924235	208.5E6	174.283	716.583 #
26) L6 AR-1254-1	6.659	5.684	39798639	208.5E6	756.038	569.393
27) L6 AR-1254-2	6.875	5.831	38849054	156.4E6	488.639	562.012
28) L6 AR-1254-3	7.237	6.234	41631044	280.7E6	476.785	573.767
29) L6 AR-1254-4	7.518	6.460	31106438	212.2E6	487.489	577.267
30) L6 AR-1254-5	7.933	6.878	34383904	213.9E6	423.735	555.425 #
31) L7 AR-1260-1	7.402	6.550	18015095	127.4E6	319.666	315.383
32) L7 AR-1260-2	7.654	6.702	19684395	88721123	288.829	283.727
33) L7 AR-1260-3	7.995	6.942	5005472	26002387	93.918	65.976 #
34) L7 AR-1260-4	8.223	7.174	14672469	6296835	234.328	21.640 #
35) L7 AR-1260-5	8.565	7.407	5298034	38106989	46.759	50.312
36) L8 AR-1262-1	8.223	6.942	14672469	26002387	193.595	46.174 #
37) L8 AR-1262-2	8.565	7.174	5298034	6296835	40.620	15.702 #
38) L8 AR-1262-3	8.901	7.697	4330848	1469148	46.038	4.087 #
39) L8 AR-1262-4	8.949	7.757	939948	22292365	12.902	33.426 #
40) L8 AR-1262-5	9.649	8.261	257567	628408	5.058	2.218 #
41) L9 AR-1268-1	8.901	7.697	4330848	1469148	27.827	1.348 #

Data Path : Z:\pestpcbsrv\HPCHEM1\ECD_P\Data\PP081325\
 Data File : PP074370.D
 Signal(s) : Signal #1: ECD1A.ch Signal #2: ECD2B.ch
 Acq On : 14 Aug 2025 00:35
 Operator : YP\AJ
 Sample : AR1254CCC500
 Misc :
 ALS Vial : 5 Sample Multiplier: 1

Instrument :
 ECD_P
 ClientSampleId :
 AR1254CCC500

Integration File signal 1: autoint1.e
 Integration File signal 2: autoint2.e
 Quant Time: Aug 14 01:51:19 2025
 Quant Method : Z:\pestpcbsrv\HPCHEM1\ECD_P\methods\PP080125.M
 Quant Title : GC EXTRACTABLES
 QLast Update : Mon Aug 04 11:01:49 2025
 Response via : Initial Calibration
 Integrator: ChemStation

Volume Inj. : 2 µl
 Signal #1 Phase : ZB-MR1 Signal #2 Phase: ZB-MR2
 Signal #1 Info : 30Mx0.32mmx 0.50µ Signal #2 Info : 30M x 0.32mm x 0.25µm

	Compound	RT#1	RT#2	Resp#1	Resp#2	ng/ml	ng/ml
42)	L9 AR-1268-2	8.949	7.757	939948	22292365	6.554	21.004 #
43)	L9 AR-1268-3	9.219	7.972	80418	662011	0.673	0.796
44)	L9 AR-1268-4	9.649	8.261	257567	628408	4.379	2.040 #
45)	L9 AR-1268-5	10.076	8.557	172271	1644512	0.490	0.645 #

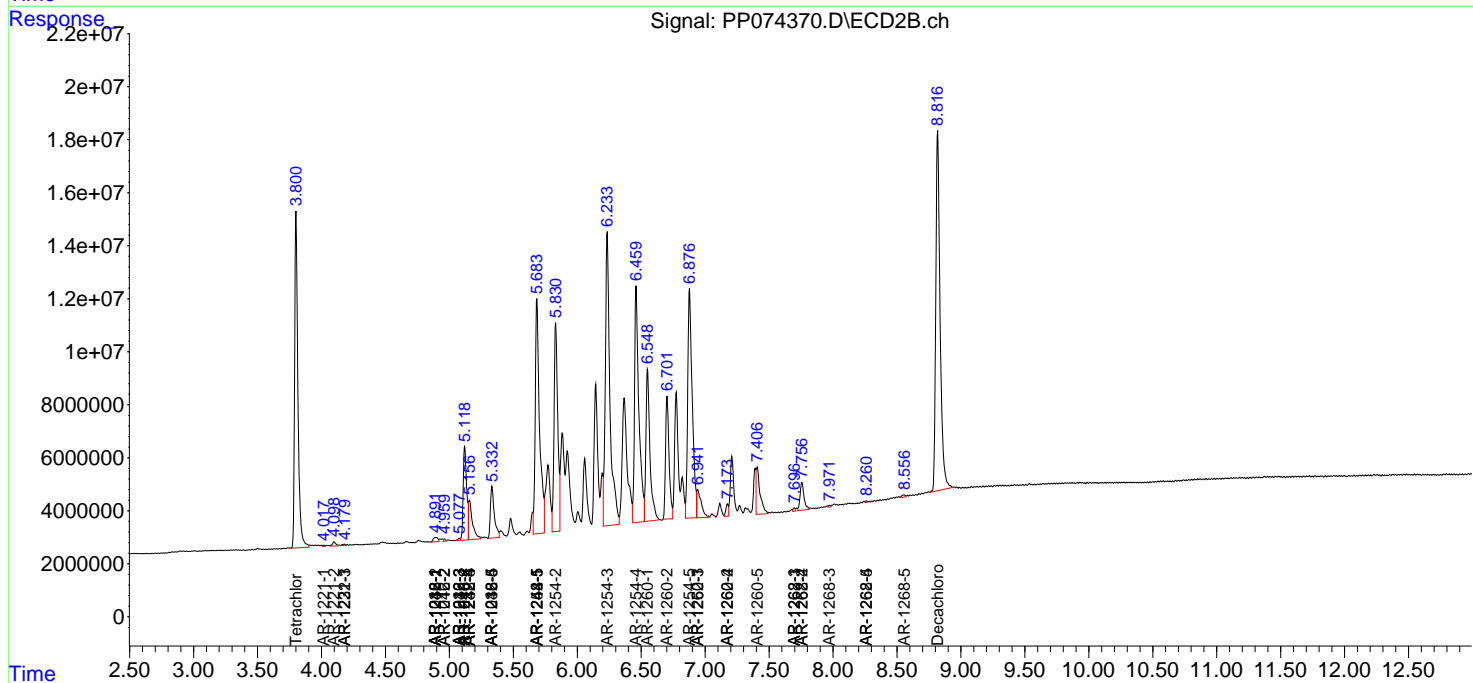
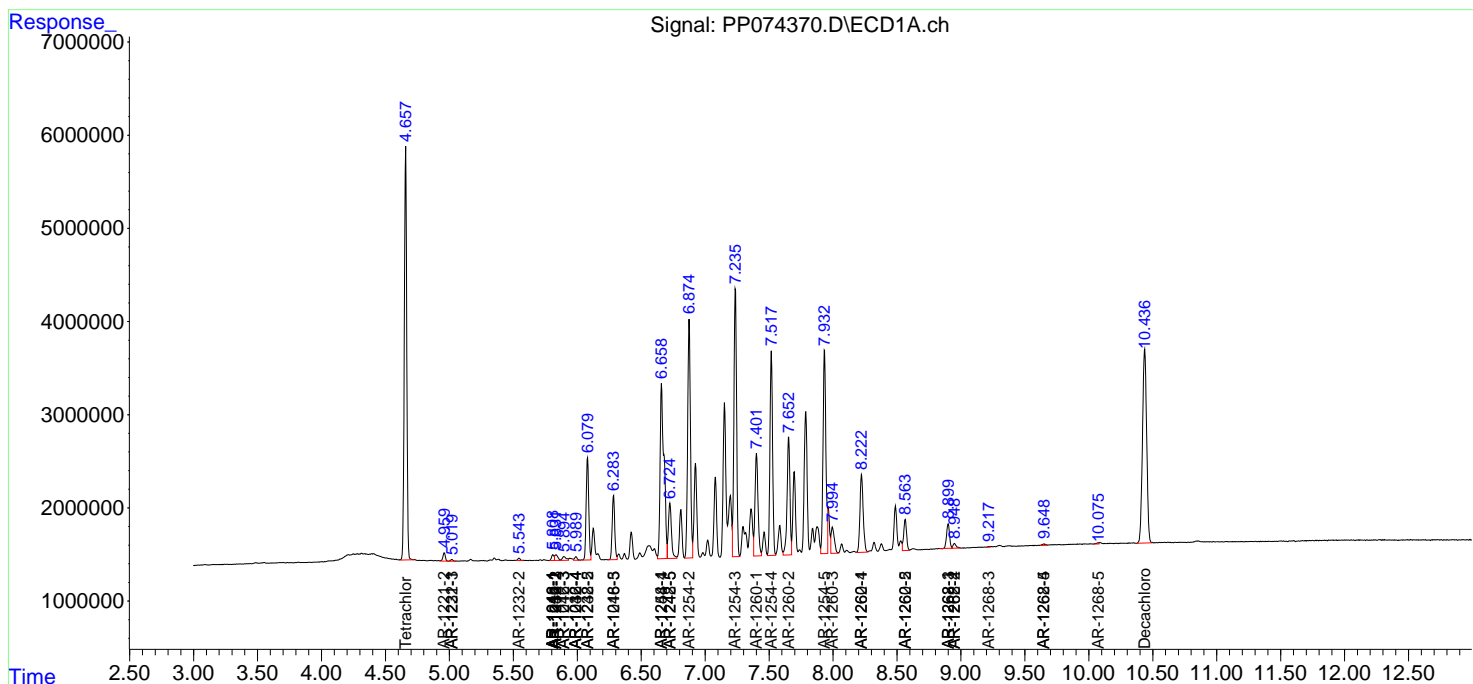
(f)=RT Delta > 1/2 Window (#)=Amounts differ by > 25% (m)=manual int.

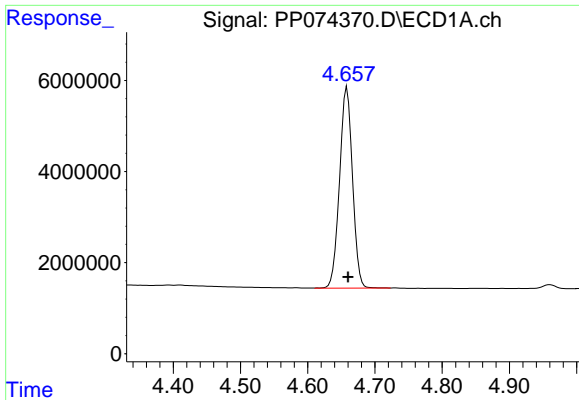
Data Path : Z:\pestpcbsrv\HPCHEM1\ECD_P\Data\PP081325\
 Data File : PP074370.D
 Signal(s) : Signal #1: ECD1A.ch Signal #2: ECD2B.ch
 Acq On : 14 Aug 2025 00:35
 Operator : YP\AJ
 Sample : AR1254CCC500
 Misc :
 ALS Vial : 5 Sample Multiplier: 1

Instrument :
 ECD_P
 ClientSampleId :
 AR1254CCC500

Integration File signal 1: autoint1.e
 Integration File signal 2: autoint2.e
 Quant Time: Aug 14 01:51:19 2025
 Quant Method : Z:\pestpcbsrv\HPCHEM1\ECD_P\methods\PP080125.M
 Quant Title : GC EXTRACTABLES
 QLast Update : Mon Aug 04 11:01:49 2025
 Response via : Initial Calibration
 Integrator: ChemStation

Volume Inj. : 2 µl
 Signal #1 Phase : ZB-MR1 Signal #2 Phase: ZB-MR2
 Signal #1 Info : 30Mx0.32mmx 0.50µ Signal #2 Info : 30M x 0.32mm x 0.25µm

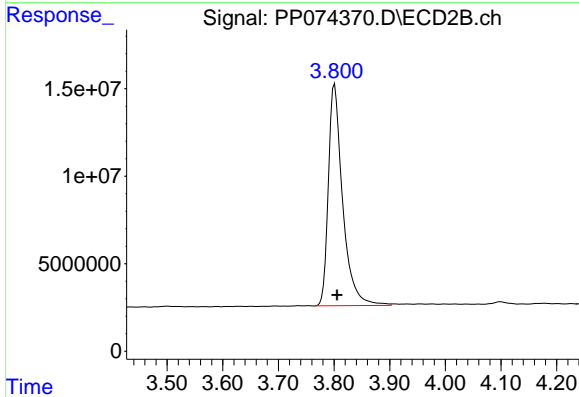




#1 Tetrachloro-m-xylene

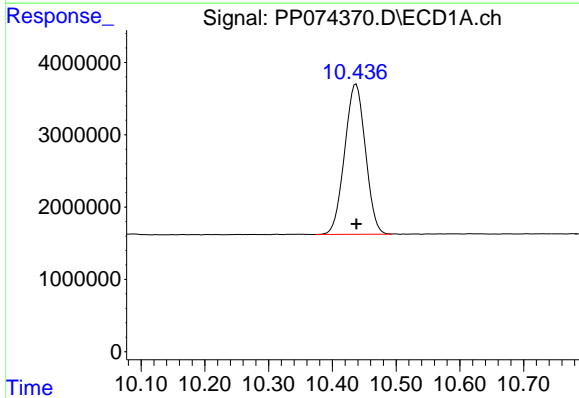
R.T.: 4.658 min
 Delta R.T.: -0.002 min
 Response: 58831059
 Conc: 52.61 ng/ml

Instrument :
 ECD_P
 ClientSampleId :
 AR1254CCC500



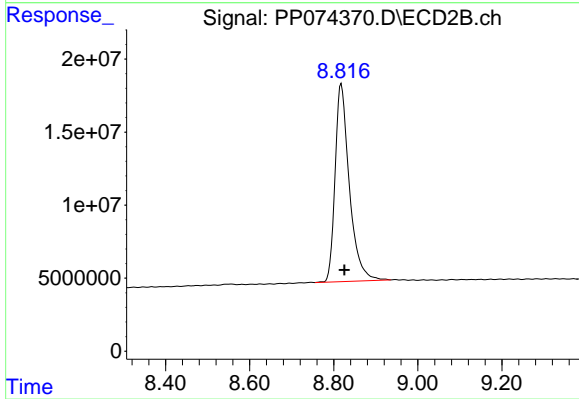
#1 Tetrachloro-m-xylene

R.T.: 3.801 min
 Delta R.T.: -0.004 min
 Response: 225888068
 Conc: 58.91 ng/ml



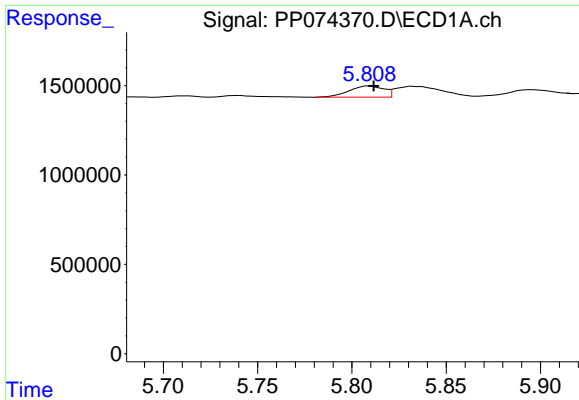
#2 Decachlorobiphenyl

R.T.: 10.437 min
 Delta R.T.: 0.000 min
 Response: 47052003
 Conc: 48.45 ng/ml



#2 Decachlorobiphenyl

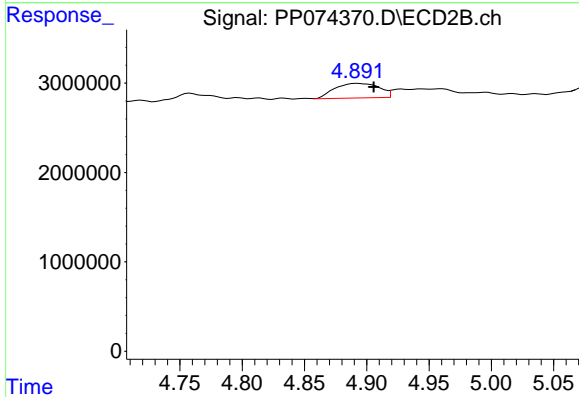
R.T.: 8.818 min
 Delta R.T.: -0.008 min
 Response: 319295591
 Conc: 53.10 ng/ml



#3 AR-1016-1

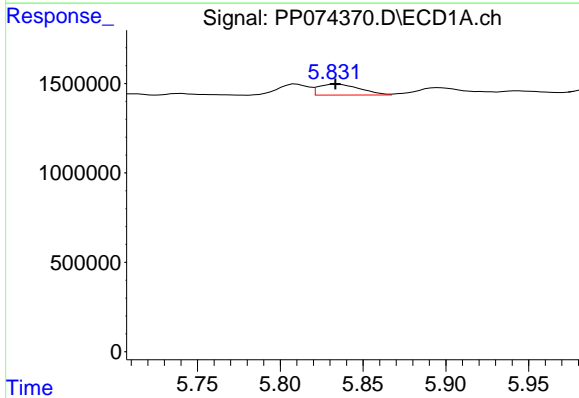
R.T.: 5.809 min
 Delta R.T.: -0.002 min
 Response: 789743
 Conc: 19.14 ng/ml

Instrument :
 ECD_P
 ClientSampleId :
 AR1254CCC500



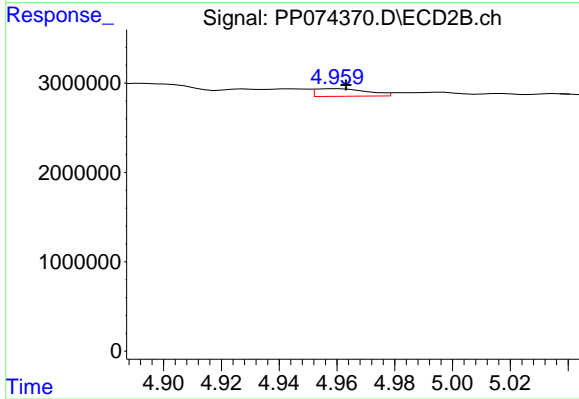
#3 AR-1016-1

R.T.: 4.893 min
 Delta R.T.: -0.013 min
 Response: 4040404
 Conc: 10.13 ng/ml



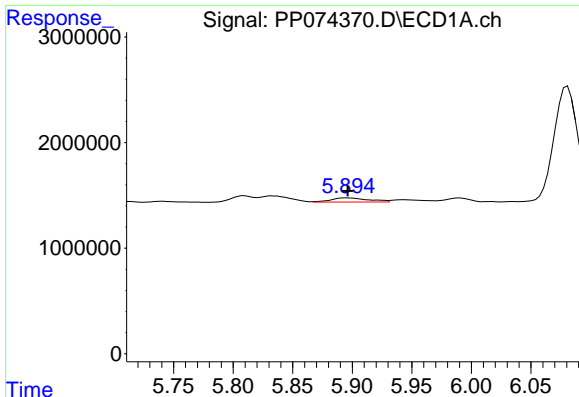
#4 AR-1016-2

R.T.: 5.833 min
 Delta R.T.: 0.000 min
 Response: 1050125
 Conc: 17.29 ng/ml



#4 AR-1016-2

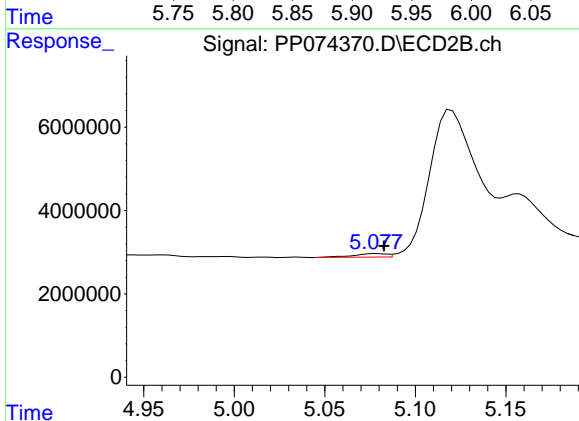
R.T.: 4.960 min
 Delta R.T.: -0.003 min
 Response: 1071211
 Conc: 5.70 ng/ml



#5 AR-1016-3

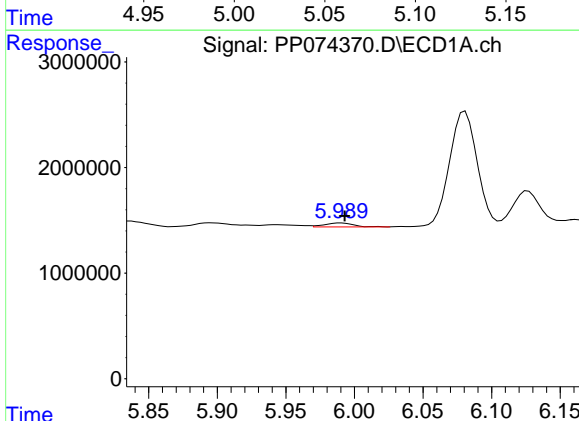
R.T.: 5.896 min
 Delta R.T.: 0.000 min
 Response: 883439
 Conc: 22.28 ng/ml

Instrument :
 ECD_P
 ClientSampleId :
 AR1254CCC500



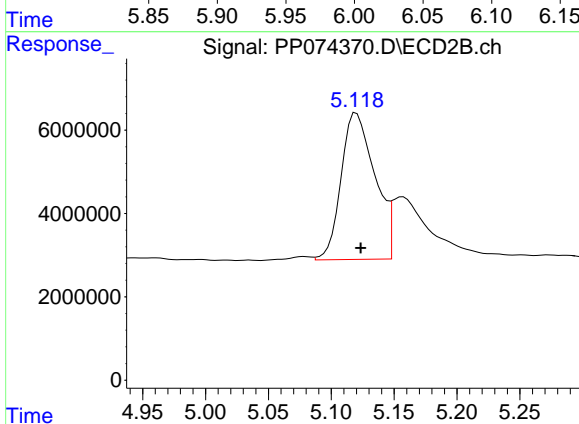
#5 AR-1016-3

R.T.: 5.078 min
 Delta R.T.: -0.004 min
 Response: 1057098
 Conc: 9.97 ng/ml



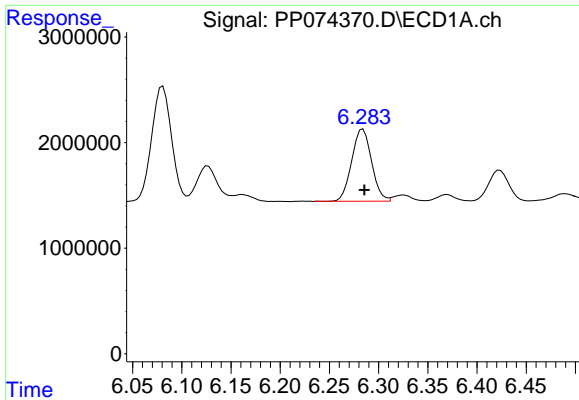
#6 AR-1016-4

R.T.: 5.990 min
 Delta R.T.: -0.003 min
 Response: 540075
 Conc: 16.59 ng/ml



#6 AR-1016-4

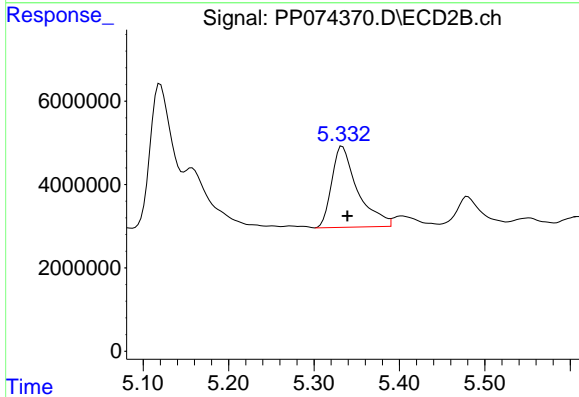
R.T.: 5.120 min
 Delta R.T.: -0.003 min
 Response: 65534552
 Conc: 600.02 ng/ml



#7 AR-1016-5

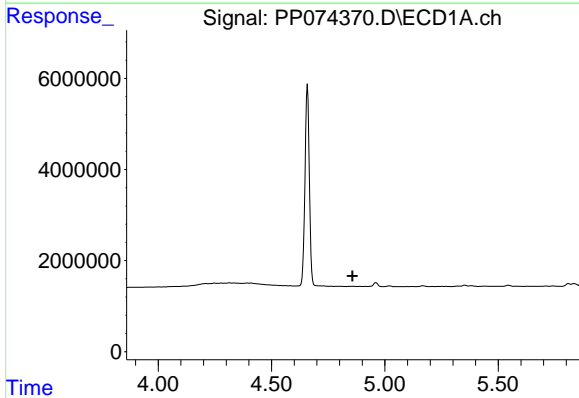
R.T.: 6.284 min
 Delta R.T.: -0.002 min
 Response: 9621914
 Conc: 296.35 ng/ml

Instrument :
 ECD_P
 ClientSampleId :
 AR1254CCC500



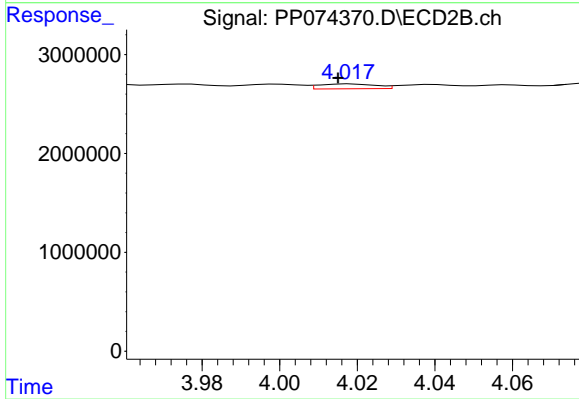
#7 AR-1016-5

R.T.: 5.333 min
 Delta R.T.: -0.006 min
 Response: 40975840
 Conc: 350.33 ng/ml



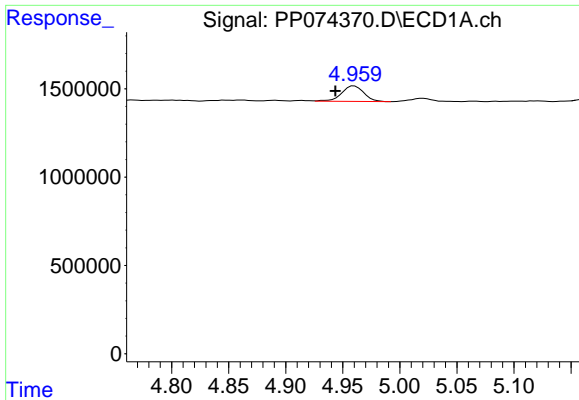
#8 AR-1221-1

R.T.: 0.000 min
 Exp R.T. : 4.858 min
 Response: 0
 Conc: N.D.



#8 AR-1221-1

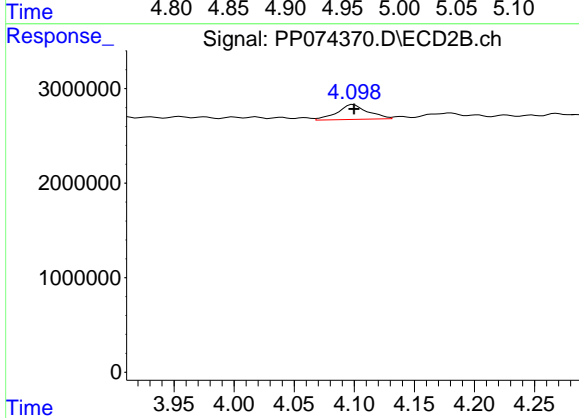
R.T.: 4.018 min
 Delta R.T.: 0.003 min
 Response: 496508
 Conc: 10.12 ng/ml



#9 AR-1221-2

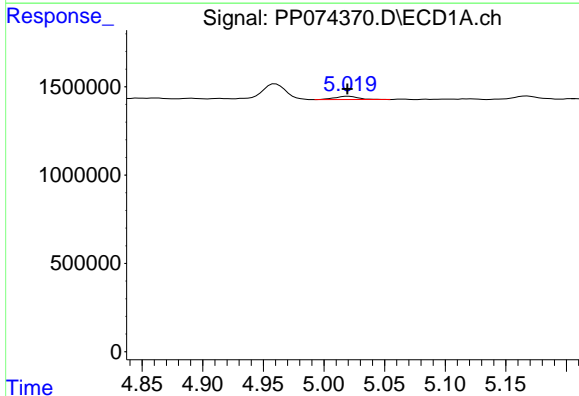
R.T.: 4.960 min
 Delta R.T.: 0.016 min
 Response: 1201716
 Conc: 95.37 ng/ml

Instrument :
 ECD_P
 ClientSampleId :
 AR1254CCC500



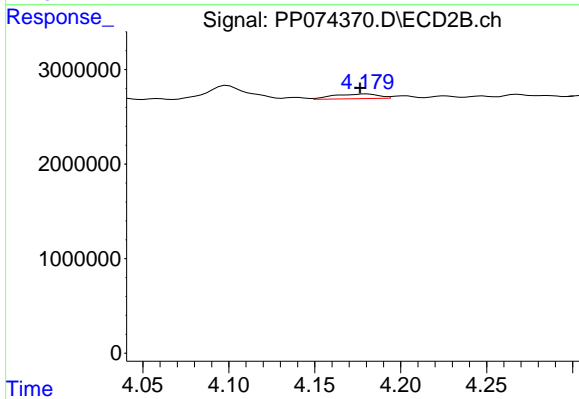
#9 AR-1221-2

R.T.: 4.099 min
 Delta R.T.: 0.000 min
 Response: 2810761
 Conc: 78.32 ng/ml



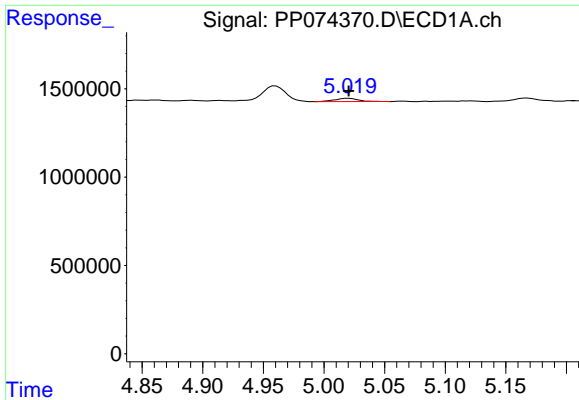
#10 AR-1221-3

R.T.: 5.020 min
 Delta R.T.: 0.001 min
 Response: 248996
 Conc: 6.80 ng/ml



#10 AR-1221-3

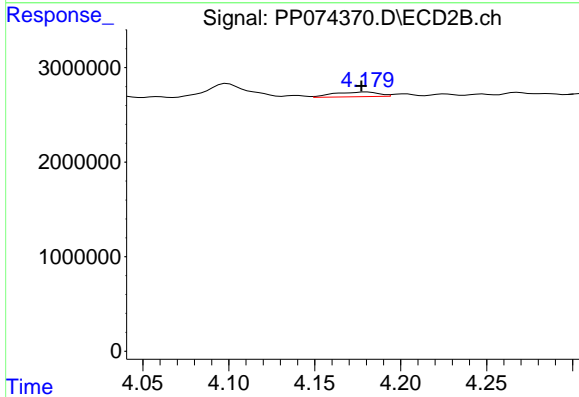
R.T.: 4.180 min
 Delta R.T.: 0.004 min
 Response: 893812
 Conc: 6.61 ng/ml



#11 AR-1232-1

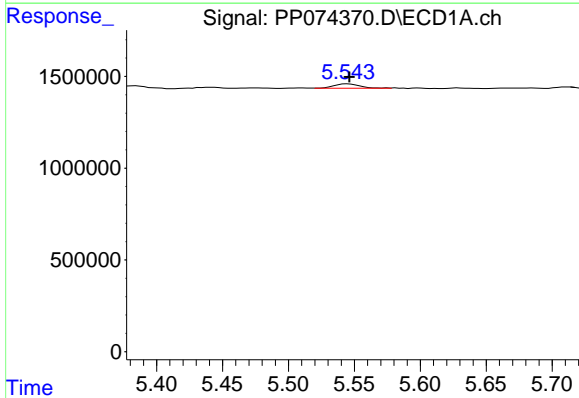
R.T.: 5.020 min
 Delta R.T.: 0.000 min
 Response: 248996
 Conc: 8.58 ng/ml

Instrument : ECD_P
 ClientSampleId : AR1254CCC500



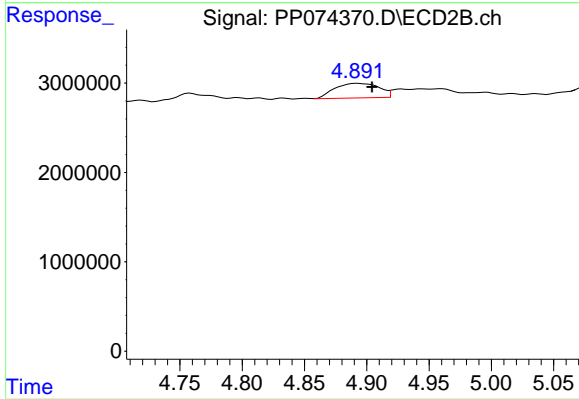
#11 AR-1232-1

R.T.: 4.180 min
 Delta R.T.: 0.003 min
 Response: 893812
 Conc: 8.82 ng/ml



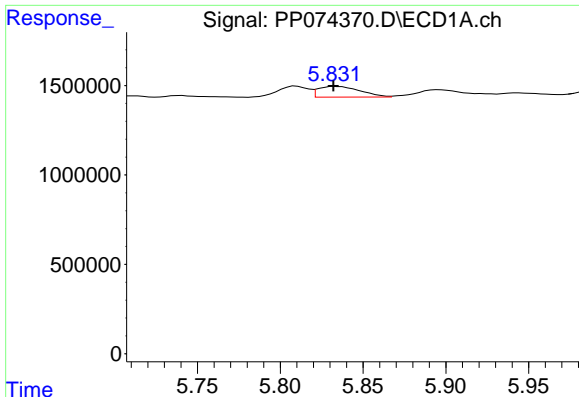
#12 AR-1232-2

R.T.: 5.545 min
 Delta R.T.: -0.002 min
 Response: 329411
 Conc: 21.90 ng/ml



#12 AR-1232-2

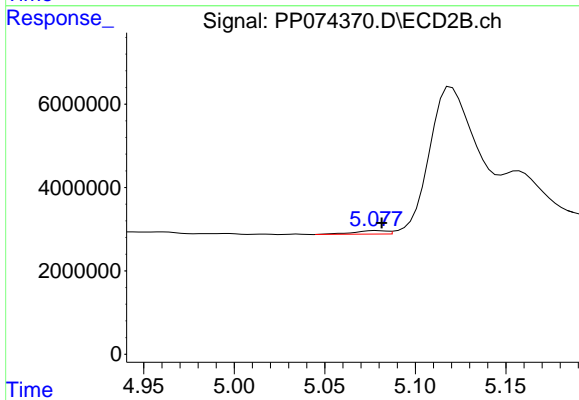
R.T.: 4.893 min
 Delta R.T.: -0.011 min
 Response: 4040404
 Conc: 23.19 ng/ml



#13 AR-1232-3

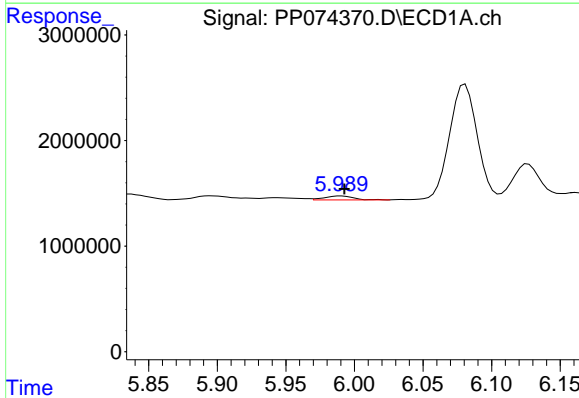
R.T.: 5.833 min
 Delta R.T.: 0.001 min
 Response: 1050125
 Conc: 36.21 ng/ml

Instrument :
 ECD_P
 ClientSampleId :
 AR1254CCC500



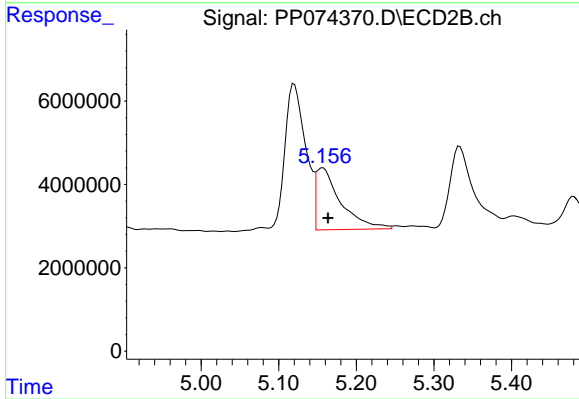
#13 AR-1232-3

R.T.: 5.078 min
 Delta R.T.: -0.003 min
 Response: 1057098
 Conc: 23.07 ng/ml



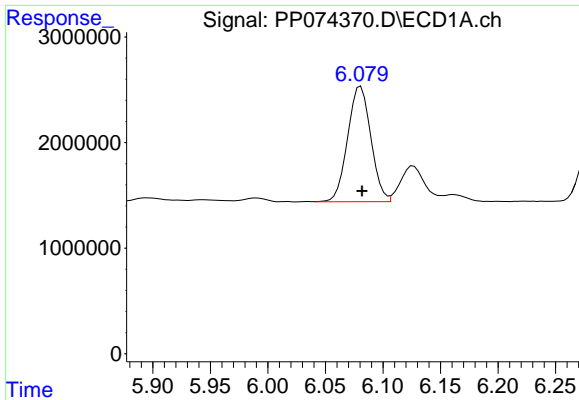
#14 AR-1232-4

R.T.: 5.990 min
 Delta R.T.: -0.002 min
 Response: 540075
 Conc: 34.91 ng/ml



#14 AR-1232-4

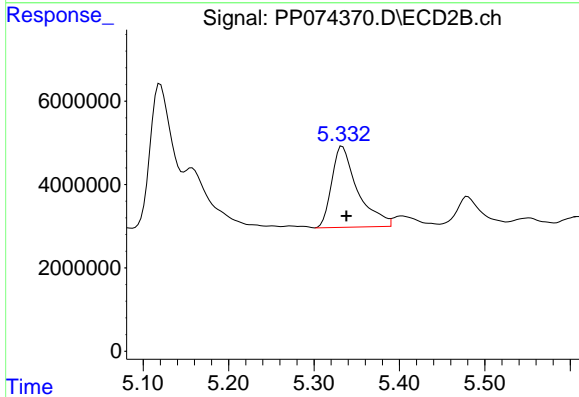
R.T.: 5.157 min
 Delta R.T.: -0.006 min
 Response: 32936022
 Conc: 567.76 ng/ml



#15 AR-1232-5

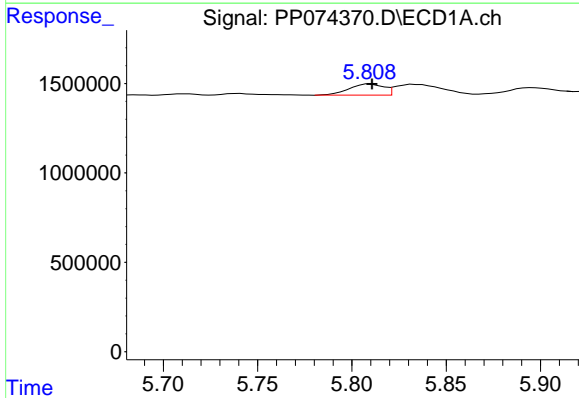
R.T.: 6.081 min
 Delta R.T.: -0.001 min
 Response: 15430467
 Conc: 1317.04 ng/ml

Instrument :
 ECD_P
 ClientSampleId :
 AR1254CCC500



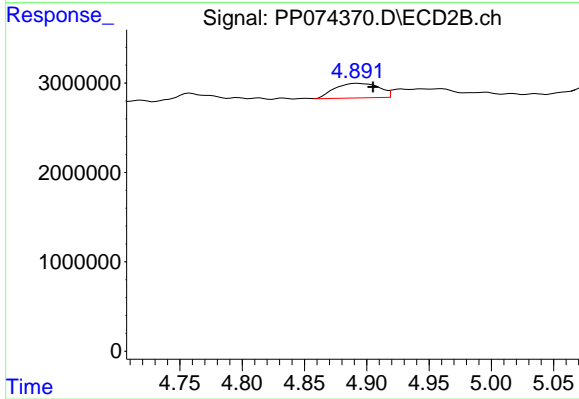
#15 AR-1232-5

R.T.: 5.333 min
 Delta R.T.: -0.004 min
 Response: 40975840
 Conc: 872.21 ng/ml



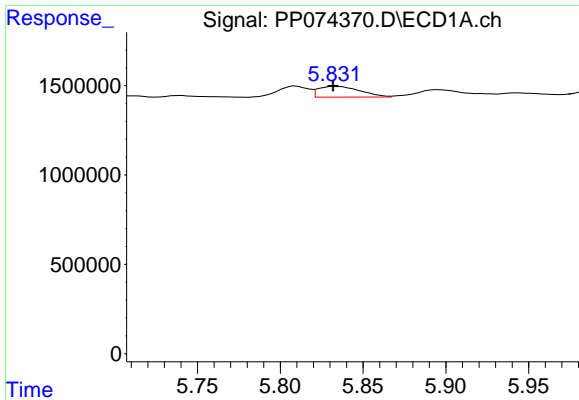
#16 AR-1242-1

R.T.: 5.809 min
 Delta R.T.: -0.001 min
 Response: 789743
 Conc: 21.19 ng/ml



#16 AR-1242-1

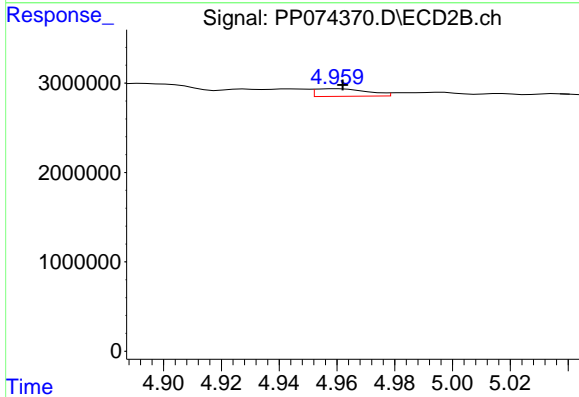
R.T.: 4.893 min
 Delta R.T.: -0.012 min
 Response: 4040404
 Conc: 11.71 ng/ml



#17 AR-1242-2

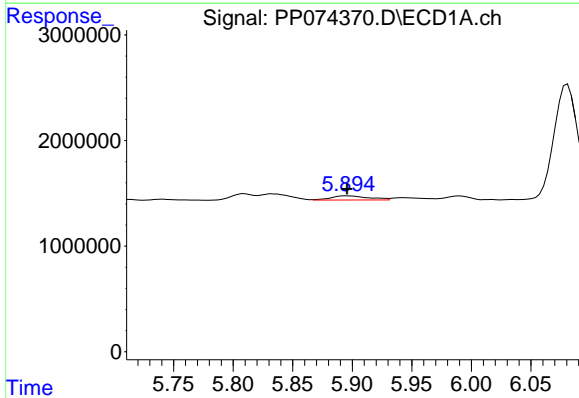
R.T.: 5.833 min
 Delta R.T.: 0.001 min
 Response: 1050125
 Conc: 19.30 ng/ml

Instrument :
 ECD_P
 ClientSampleId :
 AR1254CCC500



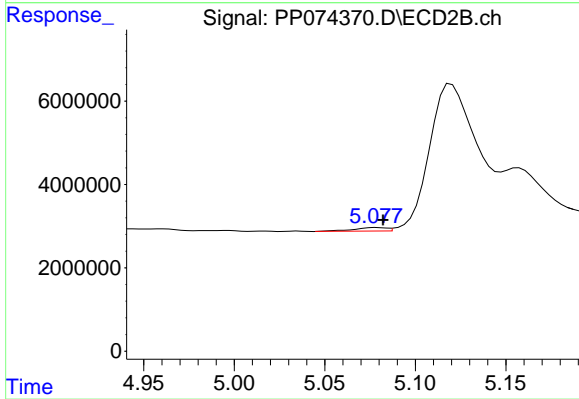
#17 AR-1242-2

R.T.: 4.960 min
 Delta R.T.: -0.002 min
 Response: 1071211
 Conc: 6.56 ng/ml



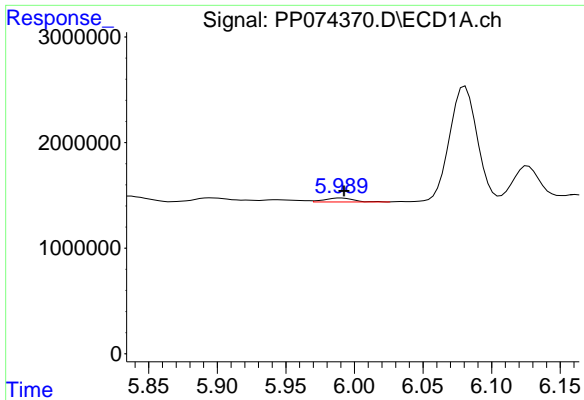
#18 AR-1242-3

R.T.: 5.896 min
 Delta R.T.: 0.000 min
 Response: 883439
 Conc: 24.72 ng/ml



#18 AR-1242-3

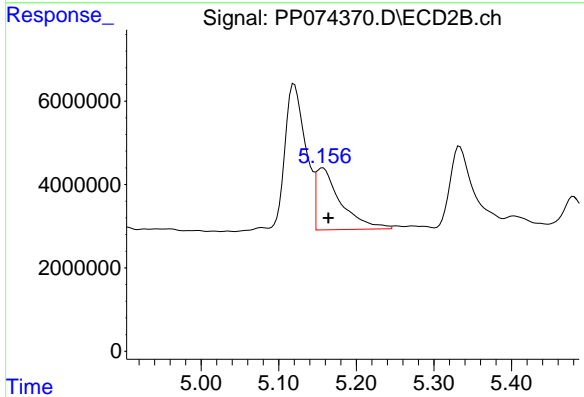
R.T.: 5.078 min
 Delta R.T.: -0.004 min
 Response: 1057098
 Conc: 11.46 ng/ml



#19 AR-1242-4

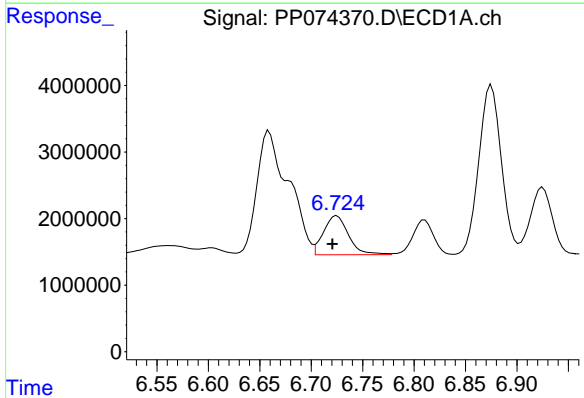
R.T.: 5.990 min
 Delta R.T.: -0.002 min
 Response: 540075
 Conc: 18.48 ng/ml

Instrument :
 ECD_P
 ClientSampleId :
 AR1254CCC500



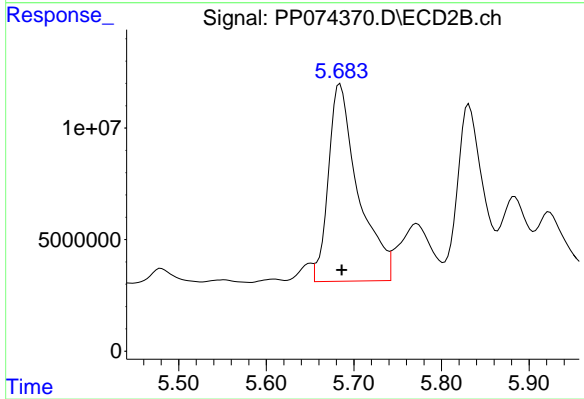
#19 AR-1242-4

R.T.: 5.157 min
 Delta R.T.: -0.007 min
 Response: 32936022
 Conc: 275.80 ng/ml



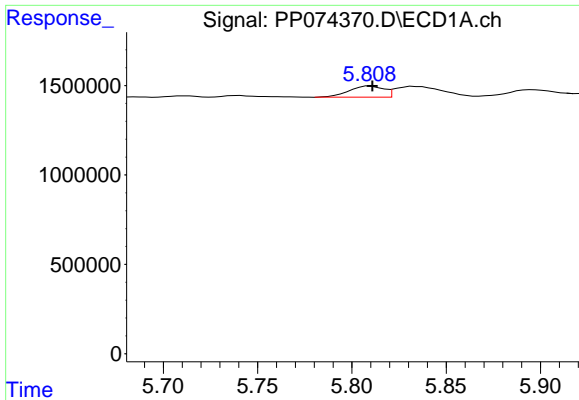
#20 AR-1242-5

R.T.: 6.725 min
 Delta R.T.: 0.004 min
 Response: 9924235
 Conc: 279.10 ng/ml



#20 AR-1242-5

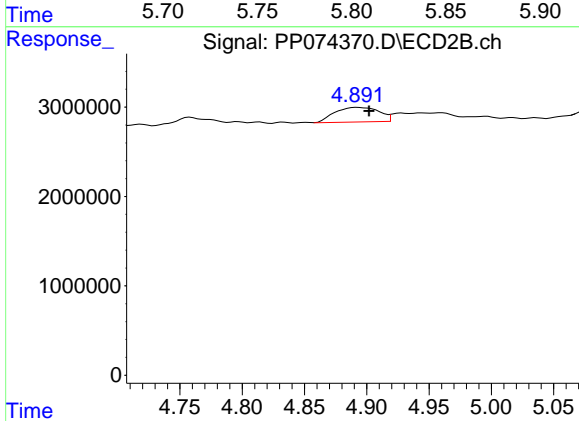
R.T.: 5.684 min
 Delta R.T.: -0.002 min
 Response: 208501399
 Conc: 1394.10 ng/ml



#21 AR-1248-1

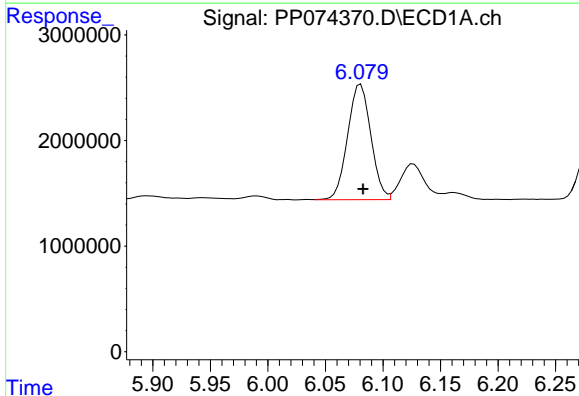
R.T.: 5.809 min
 Delta R.T.: -0.002 min
 Response: 789743
 Conc: 28.19 ng/ml

Instrument :
 ECD_P
 ClientSampleId :
 AR1254CCC500



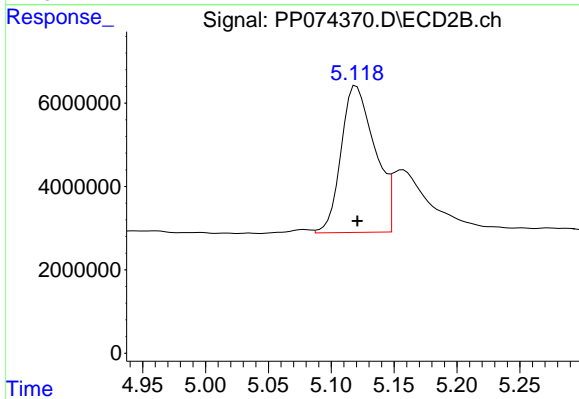
#21 AR-1248-1

R.T.: 4.893 min
 Delta R.T.: -0.009 min
 Response: 4040404
 Conc: 18.89 ng/ml



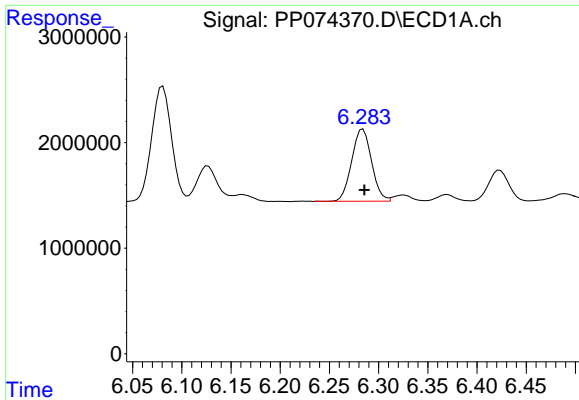
#22 AR-1248-2

R.T.: 6.081 min
 Delta R.T.: -0.002 min
 Response: 15430467
 Conc: 383.26 ng/ml



#22 AR-1248-2

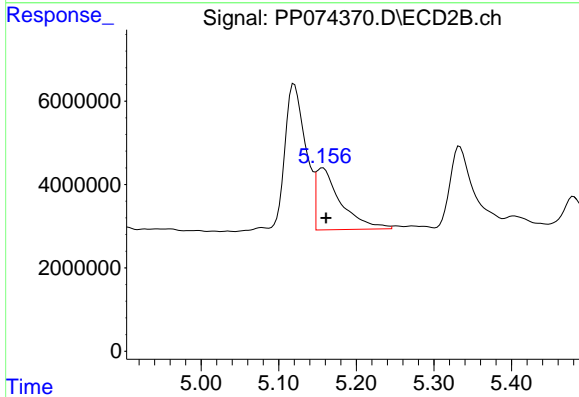
R.T.: 5.120 min
 Delta R.T.: 0.000 min
 Response: 65534552
 Conc: 447.91 ng/ml



#23 AR-1248-3

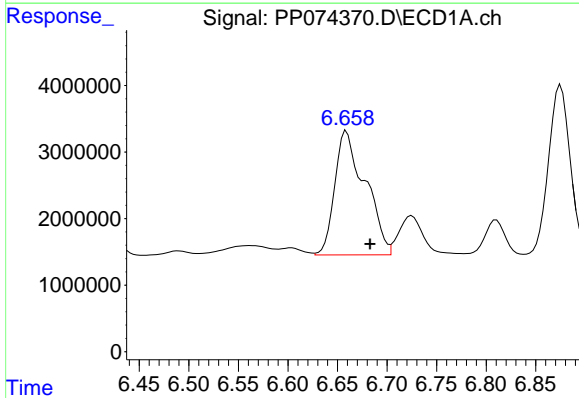
R.T.: 6.284 min
 Delta R.T.: -0.002 min
 Response: 9621914
 Conc: 215.87 ng/ml

Instrument :
 ECD_P
 ClientSampleId :
 AR1254CCC500



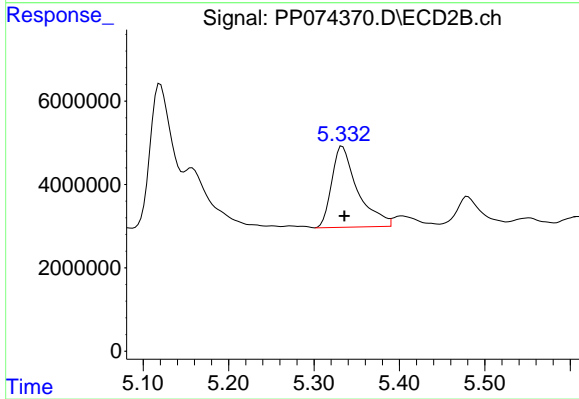
#23 AR-1248-3

R.T.: 5.157 min
 Delta R.T.: -0.004 min
 Response: 32936022
 Conc: 192.09 ng/ml



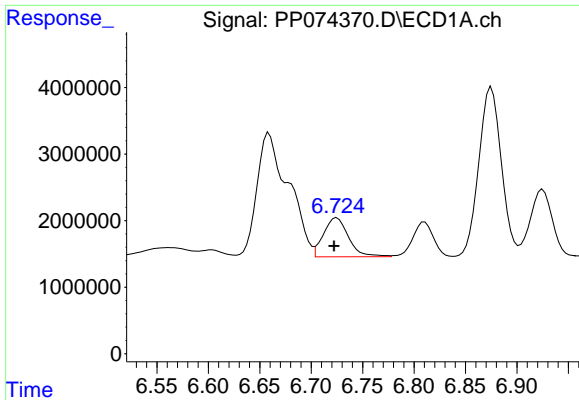
#24 AR-1248-4

R.T.: 6.659 min
 Delta R.T.: -0.024 min
 Response: 39798639
 Conc: 764.81 ng/ml



#24 AR-1248-4

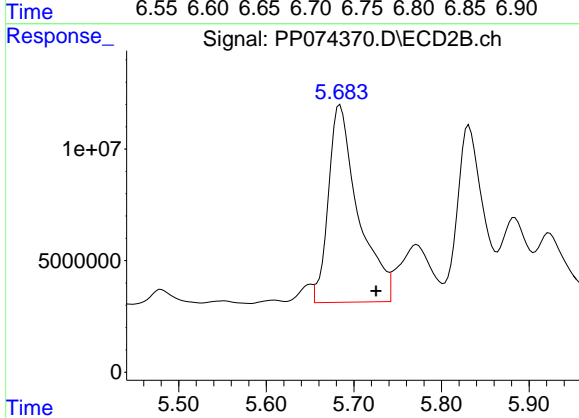
R.T.: 5.333 min
 Delta R.T.: -0.002 min
 Response: 40975840
 Conc: 246.29 ng/ml



#25 AR-1248-5

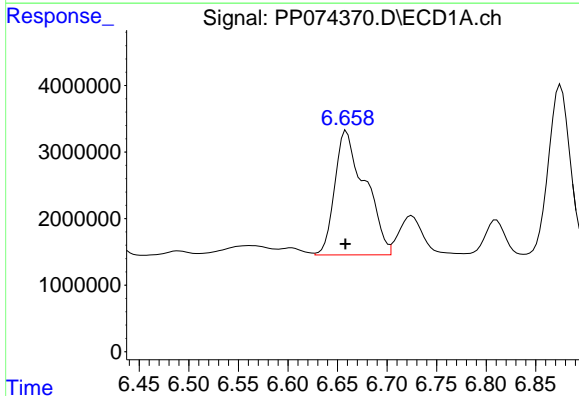
R.T.: 6.725 min
 Delta R.T.: 0.002 min
 Response: 9924235
 Conc: 174.28 ng/ml

Instrument :
 ECD_P
 ClientSampleId :
 AR1254CCC500



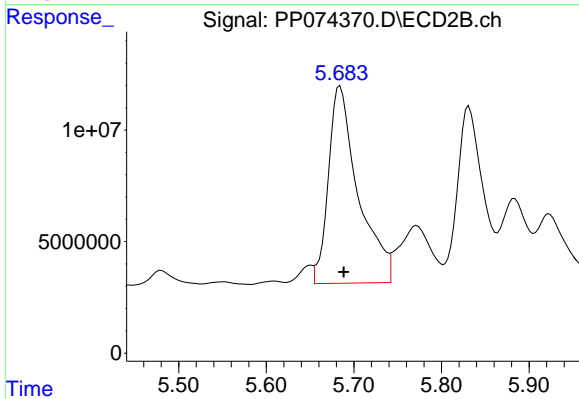
#25 AR-1248-5

R.T.: 5.684 min
 Delta R.T.: -0.041 min
 Response: 208501399
 Conc: 716.58 ng/ml



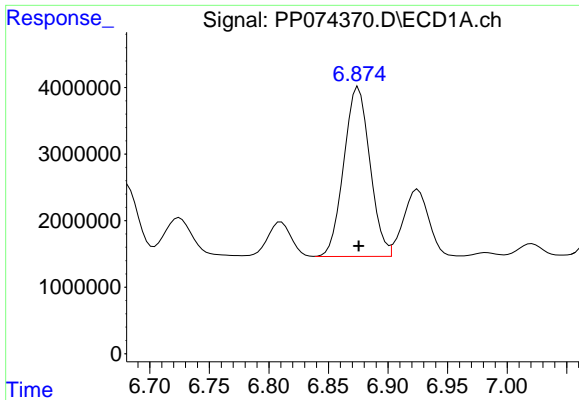
#26 AR-1254-1

R.T.: 6.659 min
 Delta R.T.: 0.000 min
 Response: 39798639
 Conc: 756.04 ng/ml



#26 AR-1254-1

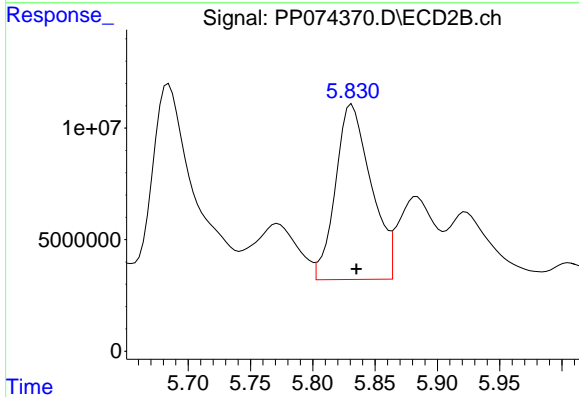
R.T.: 5.684 min
 Delta R.T.: -0.004 min
 Response: 208501399
 Conc: 569.39 ng/ml



#27 AR-1254-2

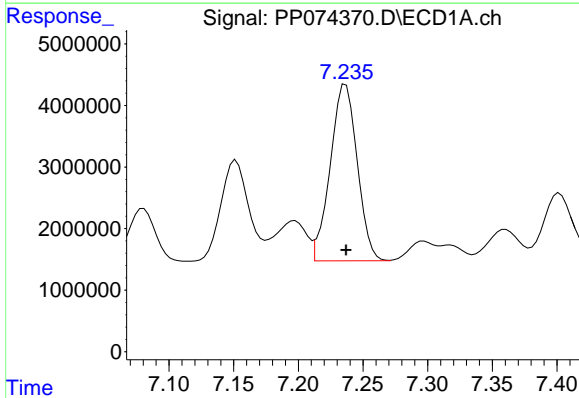
R.T.: 6.875 min
 Delta R.T.: 0.000 min
 Response: 38849054
 Conc: 488.64 ng/ml

Instrument :
 ECD_P
 ClientSampleId :
 AR1254CCC500



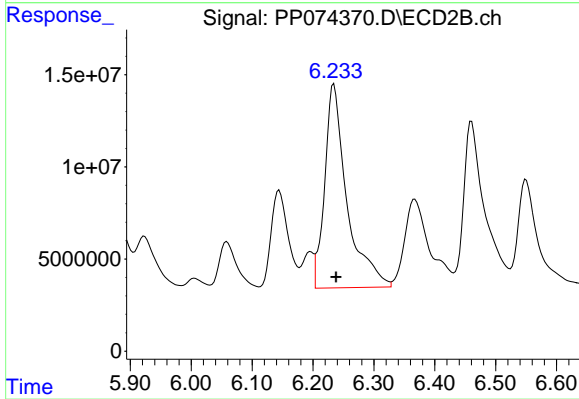
#27 AR-1254-2

R.T.: 5.831 min
 Delta R.T.: -0.004 min
 Response: 156361321
 Conc: 562.01 ng/ml



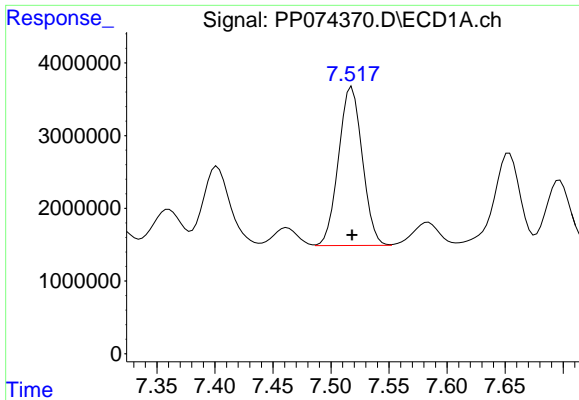
#28 AR-1254-3

R.T.: 7.237 min
 Delta R.T.: 0.000 min
 Response: 41631044
 Conc: 476.78 ng/ml



#28 AR-1254-3

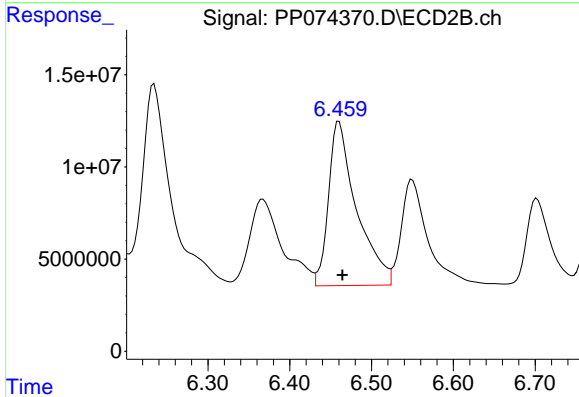
R.T.: 6.234 min
 Delta R.T.: -0.004 min
 Response: 280693527
 Conc: 573.77 ng/ml



#29 AR-1254-4

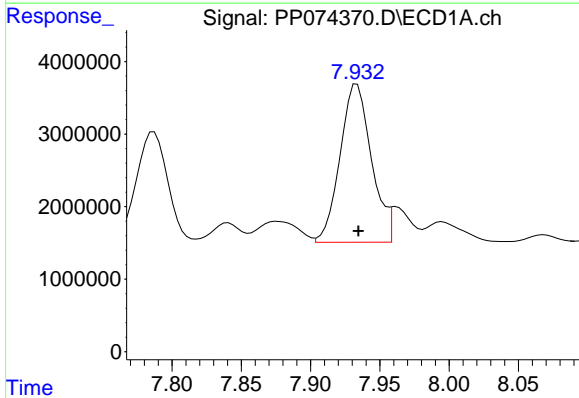
R.T.: 7.518 min
 Delta R.T.: 0.000 min
 Response: 31106438
 Conc: 487.49 ng/ml

Instrument :
 ECD_P
 ClientSampleId :
 AR1254CCC500



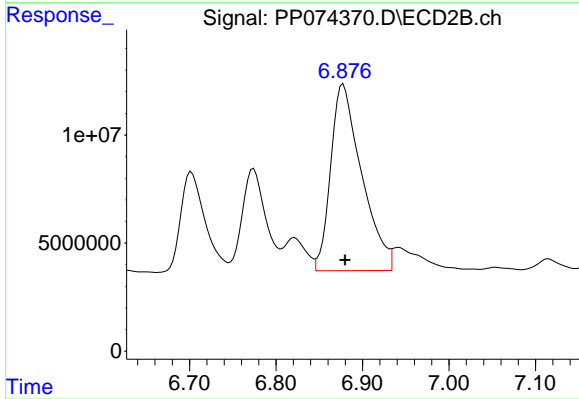
#29 AR-1254-4

R.T.: 6.460 min
 Delta R.T.: -0.004 min
 Response: 212183330
 Conc: 577.27 ng/ml



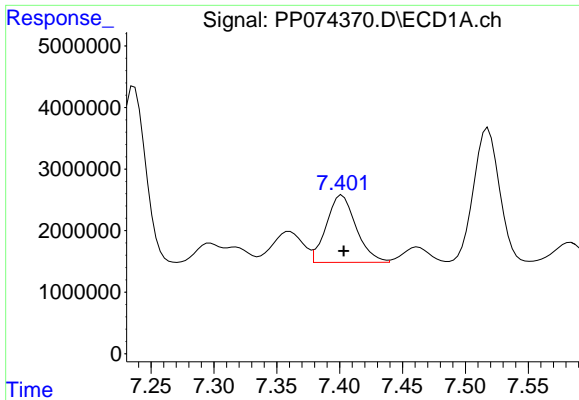
#30 AR-1254-5

R.T.: 7.933 min
 Delta R.T.: 0.000 min
 Response: 34383904
 Conc: 423.74 ng/ml



#30 AR-1254-5

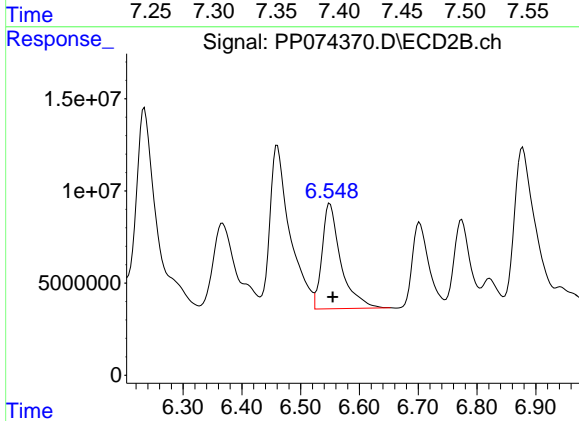
R.T.: 6.878 min
 Delta R.T.: -0.002 min
 Response: 213931584
 Conc: 555.43 ng/ml



#31 AR-1260-1

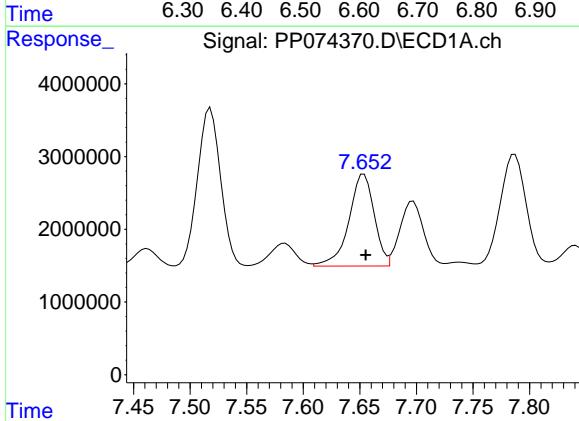
R.T.: 7.402 min
 Delta R.T.: -0.001 min
 Response: 18015095
 Conc: 319.67 ng/ml

Instrument :
 ECD_P
 ClientSampleId :
 AR1254CCC500



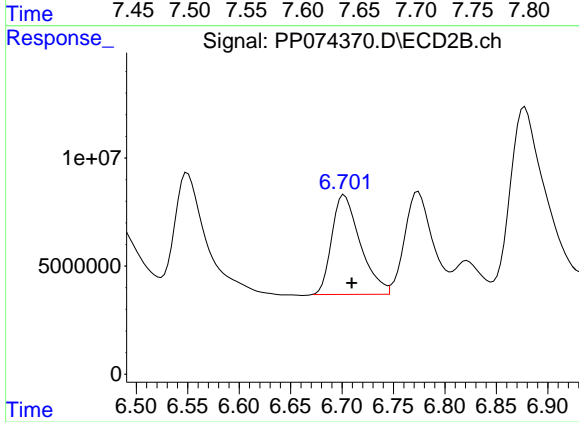
#31 AR-1260-1

R.T.: 6.550 min
 Delta R.T.: -0.005 min
 Response: 127401250
 Conc: 315.38 ng/ml



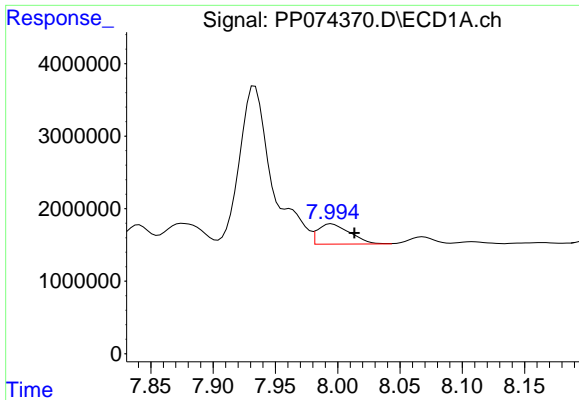
#32 AR-1260-2

R.T.: 7.654 min
 Delta R.T.: -0.002 min
 Response: 19684395
 Conc: 288.83 ng/ml



#32 AR-1260-2

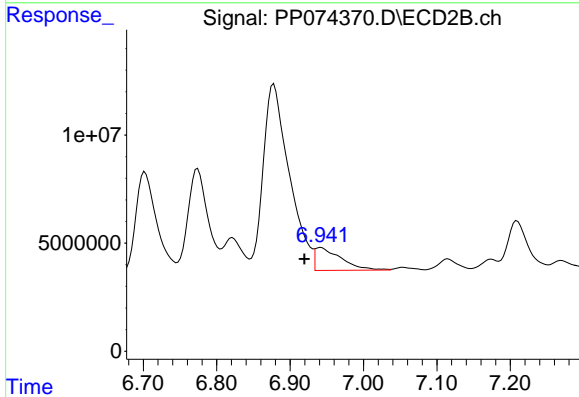
R.T.: 6.702 min
 Delta R.T.: -0.007 min
 Response: 88721123
 Conc: 283.73 ng/ml



#33 AR-1260-3

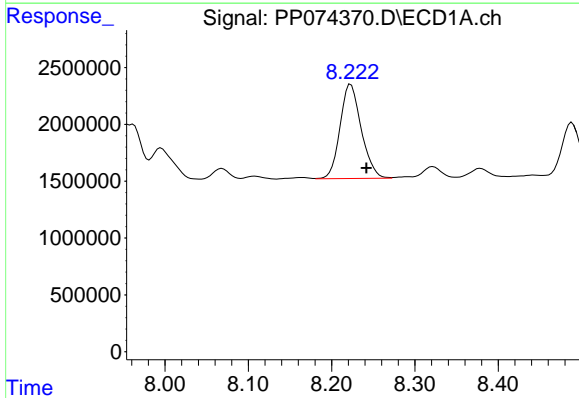
R.T.: 7.995 min
 Delta R.T.: -0.018 min
 Response: 5005472
 Conc: 93.92 ng/ml

Instrument :
 ECD_P
 ClientSampleId :
 AR1254CCC500



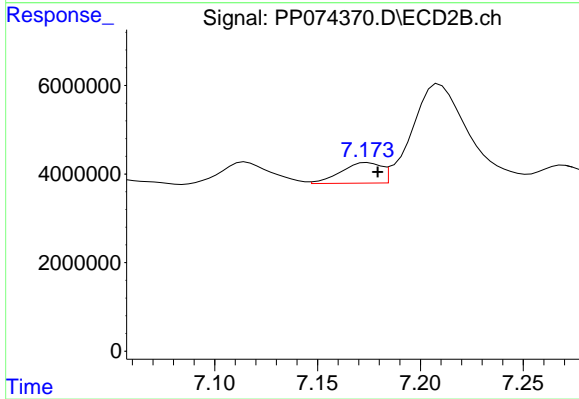
#33 AR-1260-3

R.T.: 6.942 min
 Delta R.T.: 0.023 min
 Response: 26002387
 Conc: 65.98 ng/ml



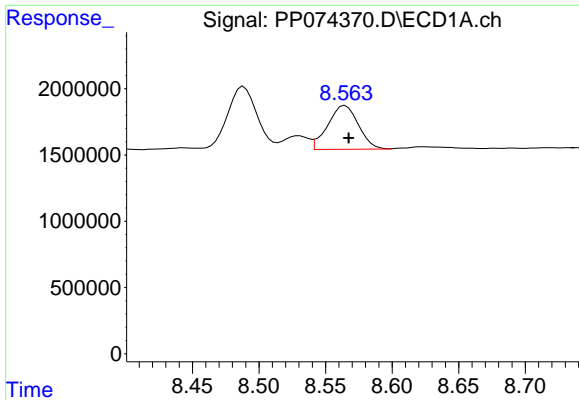
#34 AR-1260-4

R.T.: 8.223 min
 Delta R.T.: -0.019 min
 Response: 14672469
 Conc: 234.33 ng/ml



#34 AR-1260-4

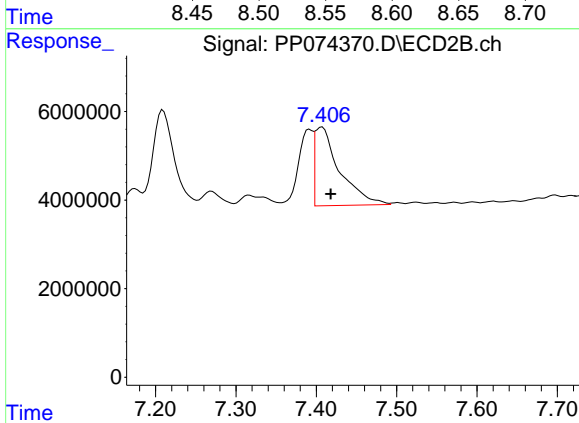
R.T.: 7.174 min
 Delta R.T.: -0.005 min
 Response: 6296835
 Conc: 21.64 ng/ml



#35 AR-1260-5

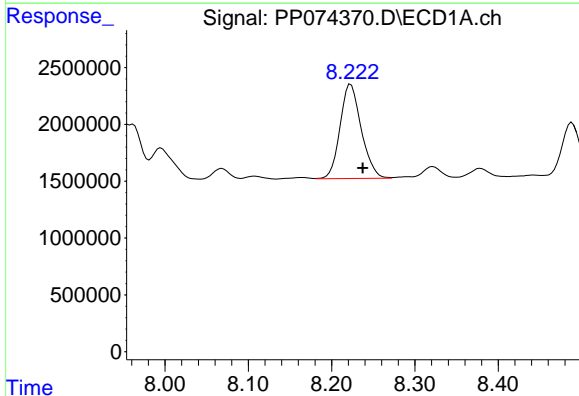
R.T.: 8.565 min
 Delta R.T.: -0.003 min
 Response: 5298034
 Conc: 46.76 ng/ml

Instrument :
 ECD_P
 ClientSampleId :
 AR1254CCC500



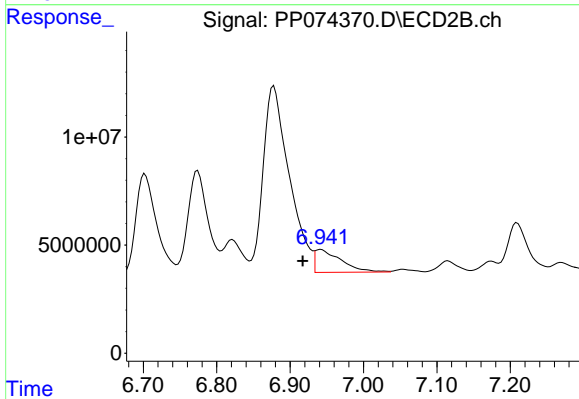
#35 AR-1260-5

R.T.: 7.407 min
 Delta R.T.: -0.011 min
 Response: 38106989
 Conc: 50.31 ng/ml



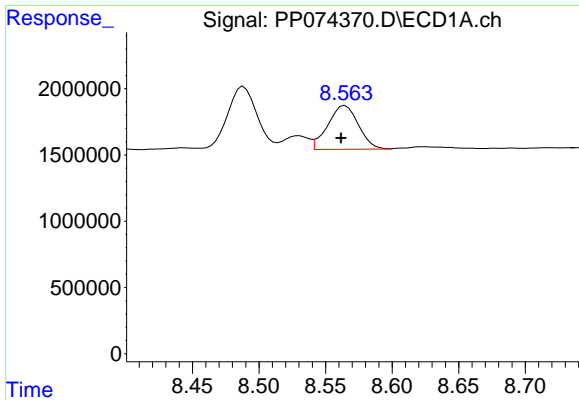
#36 AR-1262-1

R.T.: 8.223 min
 Delta R.T.: -0.014 min
 Response: 14672469
 Conc: 193.59 ng/ml



#36 AR-1262-1

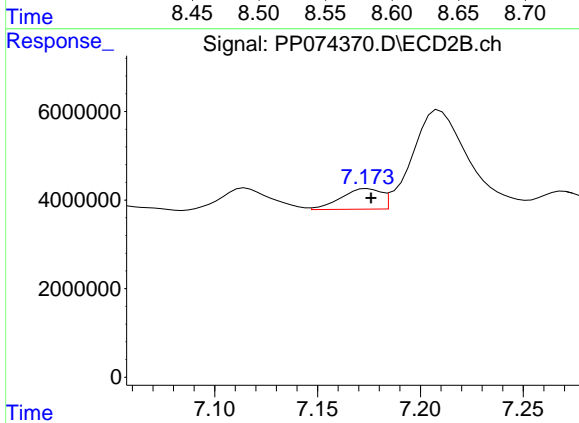
R.T.: 6.942 min
 Delta R.T.: 0.025 min
 Response: 26002387
 Conc: 46.17 ng/ml



#37 AR-1262-2

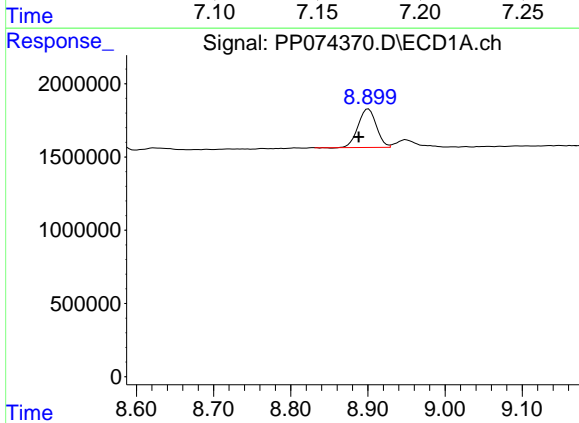
R.T.: 8.565 min
 Delta R.T.: 0.003 min
 Response: 5298034
 Conc: 40.62 ng/ml

Instrument :
 ECD_P
 ClientSampleId :
 AR1254CCC500



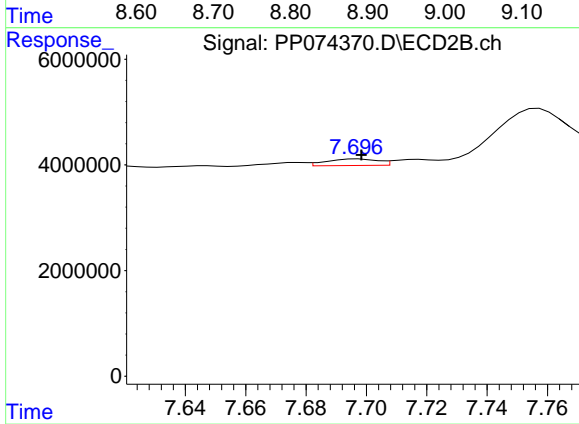
#37 AR-1262-2

R.T.: 7.174 min
 Delta R.T.: -0.002 min
 Response: 6296835
 Conc: 15.70 ng/ml



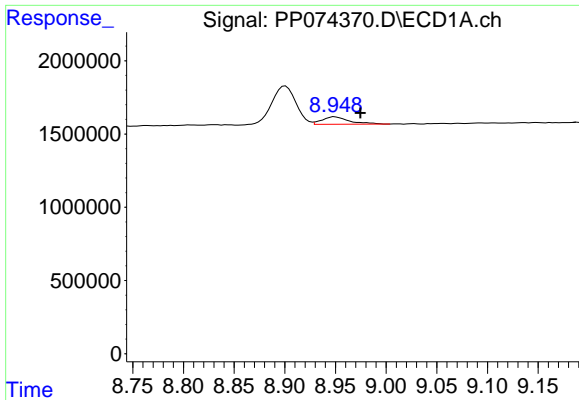
#38 AR-1262-3

R.T.: 8.901 min
 Delta R.T.: 0.013 min
 Response: 4330848
 Conc: 46.04 ng/ml



#38 AR-1262-3

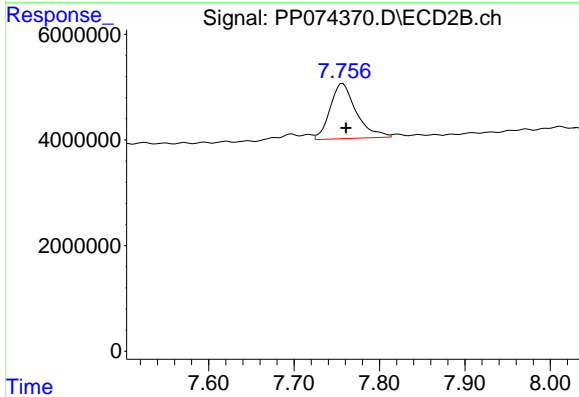
R.T.: 7.697 min
 Delta R.T.: -0.001 min
 Response: 1469148
 Conc: 4.09 ng/ml



#39 AR-1262-4

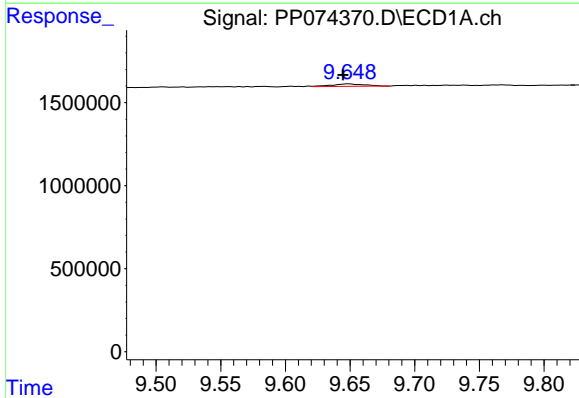
R.T.: 8.949 min
 Delta R.T.: -0.025 min
 Response: 939948
 Conc: 12.90 ng/ml

Instrument :
 ECD_P
 ClientSampleId :
 AR1254CCC500



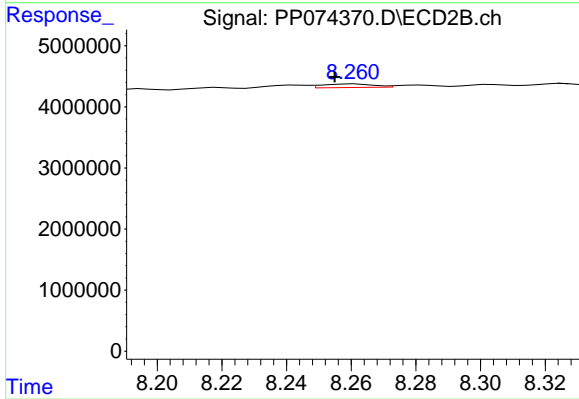
#39 AR-1262-4

R.T.: 7.757 min
 Delta R.T.: -0.004 min
 Response: 22292365
 Conc: 33.43 ng/ml



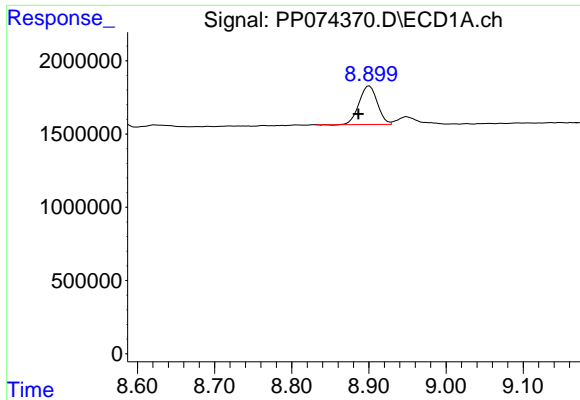
#40 AR-1262-5

R.T.: 9.649 min
 Delta R.T.: 0.005 min
 Response: 257567
 Conc: 5.06 ng/ml



#40 AR-1262-5

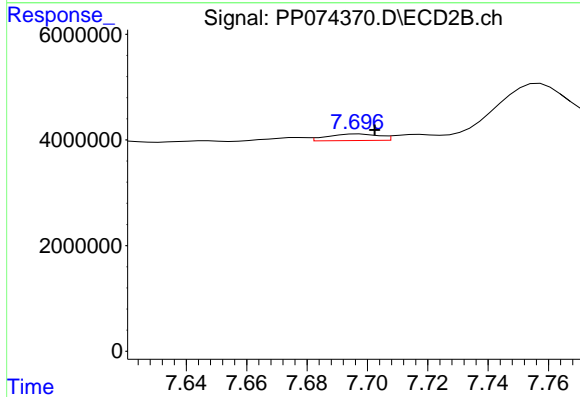
R.T.: 8.261 min
 Delta R.T.: 0.006 min
 Response: 628408
 Conc: 2.22 ng/ml



#41 AR-1268-1

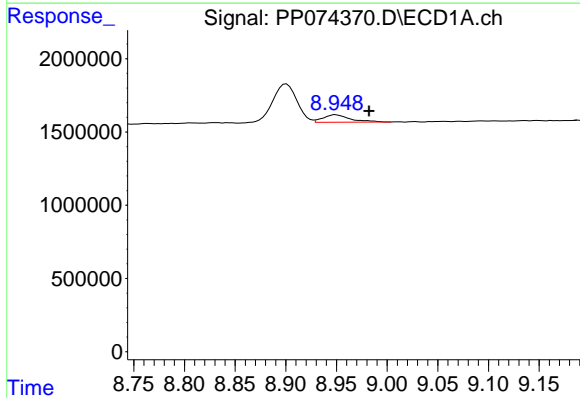
R.T.: 8.901 min
 Delta R.T.: 0.014 min
 Response: 4330848
 Conc: 27.83 ng/ml

Instrument :
 ECD_P
 ClientSampleId :
 AR1254CCC500



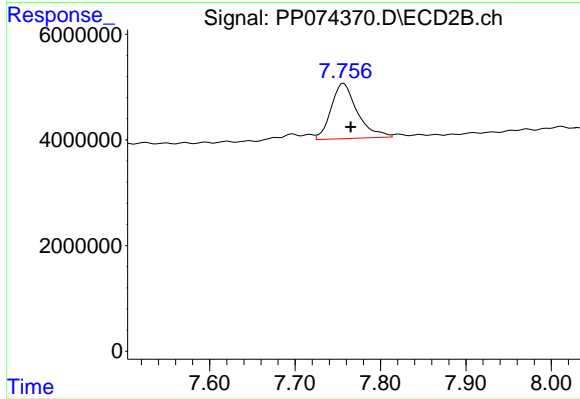
#41 AR-1268-1

R.T.: 7.697 min
 Delta R.T.: -0.005 min
 Response: 1469148
 Conc: 1.35 ng/ml



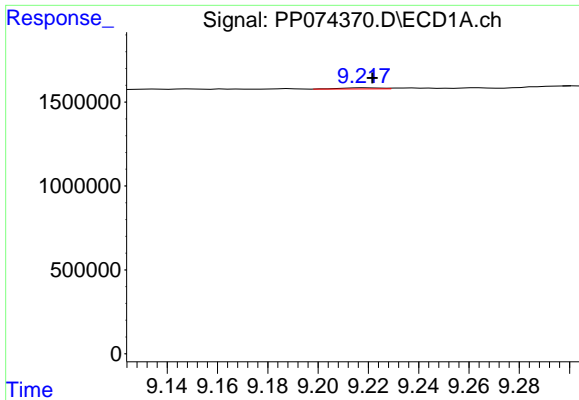
#42 AR-1268-2

R.T.: 8.949 min
 Delta R.T.: -0.033 min
 Response: 939948
 Conc: 6.55 ng/ml



#42 AR-1268-2

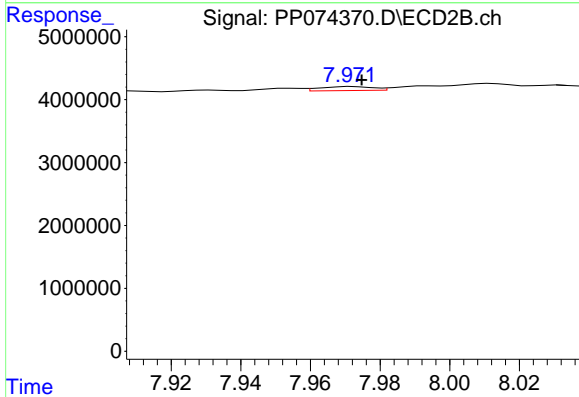
R.T.: 7.757 min
 Delta R.T.: -0.008 min
 Response: 22292365
 Conc: 21.00 ng/ml



#43 AR-1268-3

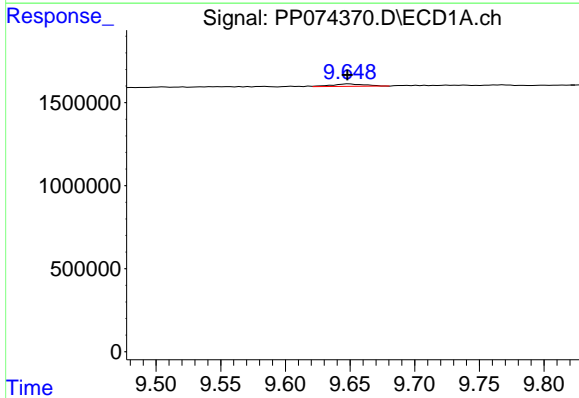
R.T.: 9.219 min
 Delta R.T.: -0.003 min
 Response: 80418
 Conc: 0.67 ng/ml

Instrument :
 ECD_P
 ClientSampleId :
 AR1254CCC500



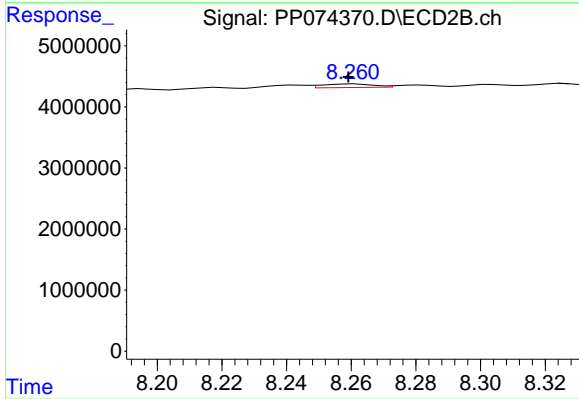
#43 AR-1268-3

R.T.: 7.972 min
 Delta R.T.: -0.003 min
 Response: 662011
 Conc: 0.80 ng/ml



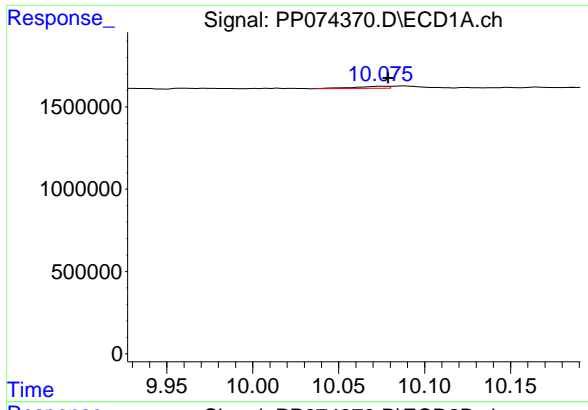
#44 AR-1268-4

R.T.: 9.649 min
 Delta R.T.: 0.001 min
 Response: 257567
 Conc: 4.38 ng/ml



#44 AR-1268-4

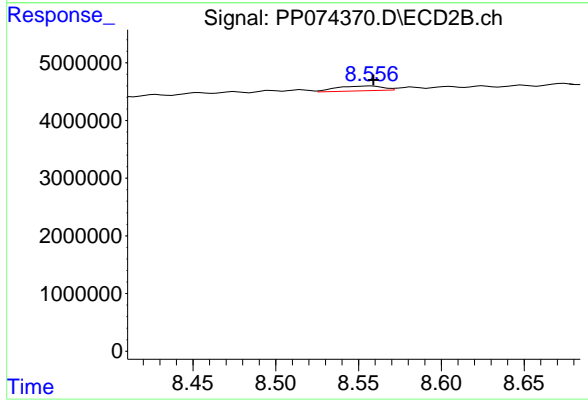
R.T.: 8.261 min
 Delta R.T.: 0.002 min
 Response: 628408
 Conc: 2.04 ng/ml



#45 AR-1268-5

R.T.: 10.076 min
 Delta R.T.: -0.003 min
 Response: 172271
 Conc: 0.49 ng/ml

Instrument :
 ECD_P
 ClientSampleId :
 AR1254CCC500



#45 AR-1268-5

R.T.: 8.557 min
 Delta R.T.: -0.002 min
 Response: 1644512
 Conc: 0.64 ng/ml