

Data Path : Z:\pestpcbsrv\HPCHEM1\ECD\_P\Data\PP081325\  
 Data File : PP074371.D  
 Signal(s) : Signal #1: ECD1A.ch Signal #2: ECD2B.ch  
 Acq On : 14 Aug 2025 00:51  
 Operator : YP\AJ  
 Sample : I.BLK  
 Misc :  
 ALS Vial : 2 Sample Multiplier: 1

Instrument :  
 ECD\_P  
 ClientSampleId :  
 I.BLK

Integration File signal 1: autoint1.e  
 Integration File signal 2: autoint2.e  
 Quant Time: Aug 14 01:51:32 2025  
 Quant Method : Z:\pestpcbsrv\HPCHEM1\ECD\_P\methods\PP080125.M  
 Quant Title : GC EXTRACTABLES  
 QLast Update : Mon Aug 04 11:01:49 2025  
 Response via : Initial Calibration  
 Integrator: ChemStation

Volume Inj. : 2 µl  
 Signal #1 Phase : ZB-MR1 Signal #2 Phase: ZB-MR2  
 Signal #1 Info : 30Mx0.32mmx 0.50µ Signal #2 Info : 30M x 0.32mm x 0.25µm

Compound	RT#1	RT#2	Resp#1	Resp#2	ng/ml	ng/ml
-----						
System Monitoring Compounds						
1) SA Tetrachlo...	4.658	3.801	22075270	63715124	19.740	16.617
2) SA Decachlor...	10.437	8.818	18298471	103.1E6	18.842	17.152
Target Compounds						
3) L1 AR-1016-1	5.745f	4.908	240343	91763	5.826	0.230 #
4) L1 AR-1016-2	0.000	4.964	0	123698	N.D.	0.659 #
5) L1 AR-1016-3	5.911	5.089	214836	230784	5.417	2.176 #
6) L1 AR-1016-4	5.946f	5.131	433701	240978	13.326	2.206 #
7) L1 AR-1016-5	0.000	5.346	0	568238	N.D.	4.858 #
8) L2 AR-1221-1	4.857	4.022	249541	187912	14.886	3.828 #
9) L2 AR-1221-2	4.960	4.094	519461	794850	41.224	22.147 #
10) L2 AR-1221-3	4.960f	4.174	519461	170663	14.179	1.262 #
11) L3 AR-1232-1	4.960f	4.174	519461	170663	17.889	1.684 #
12) L3 AR-1232-2	0.000	4.908	0	91763	N.D.	0.527 #
13) L3 AR-1232-3	0.000	5.089	0	230784	N.D.	5.037 #
14) L3 AR-1232-4	5.946f	5.171	433701	460400	28.037	7.936 #
15) L3 AR-1232-5	0.000	5.346	0	568238	N.D.	12.095 #
16) L4 AR-1242-1	5.745f	4.908	240343	91763	6.449	0.266 #
17) L4 AR-1242-2	0.000	4.964	0	123698	N.D.	0.757 #
18) L4 AR-1242-3	5.911	5.089	214836	230784	6.012	2.502 #
19) L4 AR-1242-4	5.946f	5.171	433701	460400	14.843	3.855 #
20) L4 AR-1242-5	6.748	5.663	1323684	288667	37.226	1.930 #
21) L5 AR-1248-1	5.745f	4.908	240343	91763	8.579	0.429 #
22) L5 AR-1248-2	6.152f	5.131	301139	240978	7.480	1.647 #
23) L5 AR-1248-3	0.000	5.171	0	460400	N.D.	2.685 #
24) L5 AR-1248-4	6.655	5.346	1112084	568238	21.371	3.415 #
25) L5 AR-1248-5	6.748	5.763f	1323684	12259044	23.246	42.132 #
26) L6 AR-1254-1	6.655	5.663	1112084	288667	21.126	0.788 #
27) L6 AR-1254-2	6.875	5.826	290549	920521	3.654	3.309 #
28) L6 AR-1254-3	7.228	6.239	2277533	541122	26.084	1.106 #
29) L6 AR-1254-4	7.521	6.460	292062	608069	4.577	1.654 #
30) L6 AR-1254-5	7.927	6.878	236781	363776	2.918	0.944 #
31) L7 AR-1260-1	7.403	6.555	163189	245410	2.896	0.608 #
32) L7 AR-1260-2	7.658	6.715	305773	296923	4.487	0.950 #
33) L7 AR-1260-3	8.019	6.917	132320	170667	2.483	0.433 #
34) L7 AR-1260-4	8.243	7.180	59276	189687	0.947	0.652 #
35) L7 AR-1260-5	8.569	7.423	132797	234273	1.172	0.309 #
36) L8 AR-1262-1	8.243	6.917	59276	170667	0.782	0.303 #
37) L8 AR-1262-2	8.569	7.180	132797	189687	1.018	0.473 #
38) L8 AR-1262-3	0.000	7.703	0	2679159	N.D.	7.453 #
39) L8 AR-1262-4	9.007	7.765	14554	1629069	0.200	2.443 #
40) L8 AR-1262-5	9.636	8.261	81081	287300	1.592	1.014 #
41) L9 AR-1268-1	0.000	7.703	0	2679159	N.D.	2.457 #

Data Path : Z:\pestpcbsrv\HPCHEM1\ECD\_P\Data\PP081325\  
 Data File : PP074371.D  
 Signal(s) : Signal #1: ECD1A.ch Signal #2: ECD2B.ch  
 Acq On : 14 Aug 2025 00:51  
 Operator : YP\AJ  
 Sample : I.BLK  
 Misc :  
 ALS Vial : 2 Sample Multiplier: 1

Instrument :  
 ECD\_P  
 ClientSampleId :  
 I.BLK

Integration File signal 1: autoint1.e  
 Integration File signal 2: autoint2.e  
 Quant Time: Aug 14 01:51:32 2025  
 Quant Method : Z:\pestpcbsrv\HPCHEM1\ECD\_P\methods\PP080125.M  
 Quant Title : GC EXTRACTABLES  
 QLast Update : Mon Aug 04 11:01:49 2025  
 Response via : Initial Calibration  
 Integrator: ChemStation

Volume Inj. : 2 µl  
 Signal #1 Phase : ZB-MR1 Signal #2 Phase: ZB-MR2  
 Signal #1 Info : 30Mx0.32mmx 0.50µ Signal #2 Info : 30M x 0.32mm x 0.25µm

	Compound	RT#1	RT#2	Resp#1	Resp#2	ng/ml	ng/ml
42)	L9 AR-1268-2	9.007	7.765	14554	1629069	0.101	1.535 #
43)	L9 AR-1268-3	9.223	7.973	96488	430065	0.808	0.517 #
44)	L9 AR-1268-4	9.636	8.261	81081	287300	1.379	0.933 #
45)	L9 AR-1268-5	10.079	8.559	74640	662432	0.212	0.260

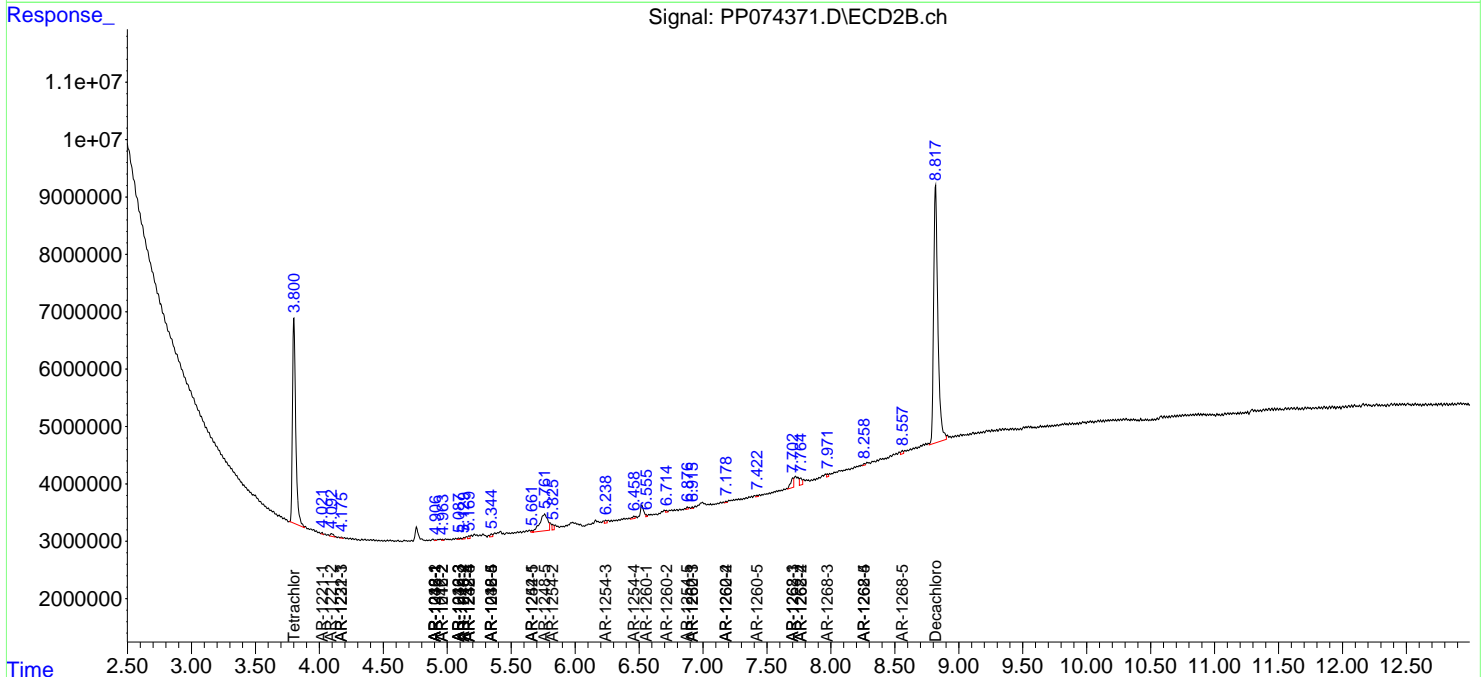
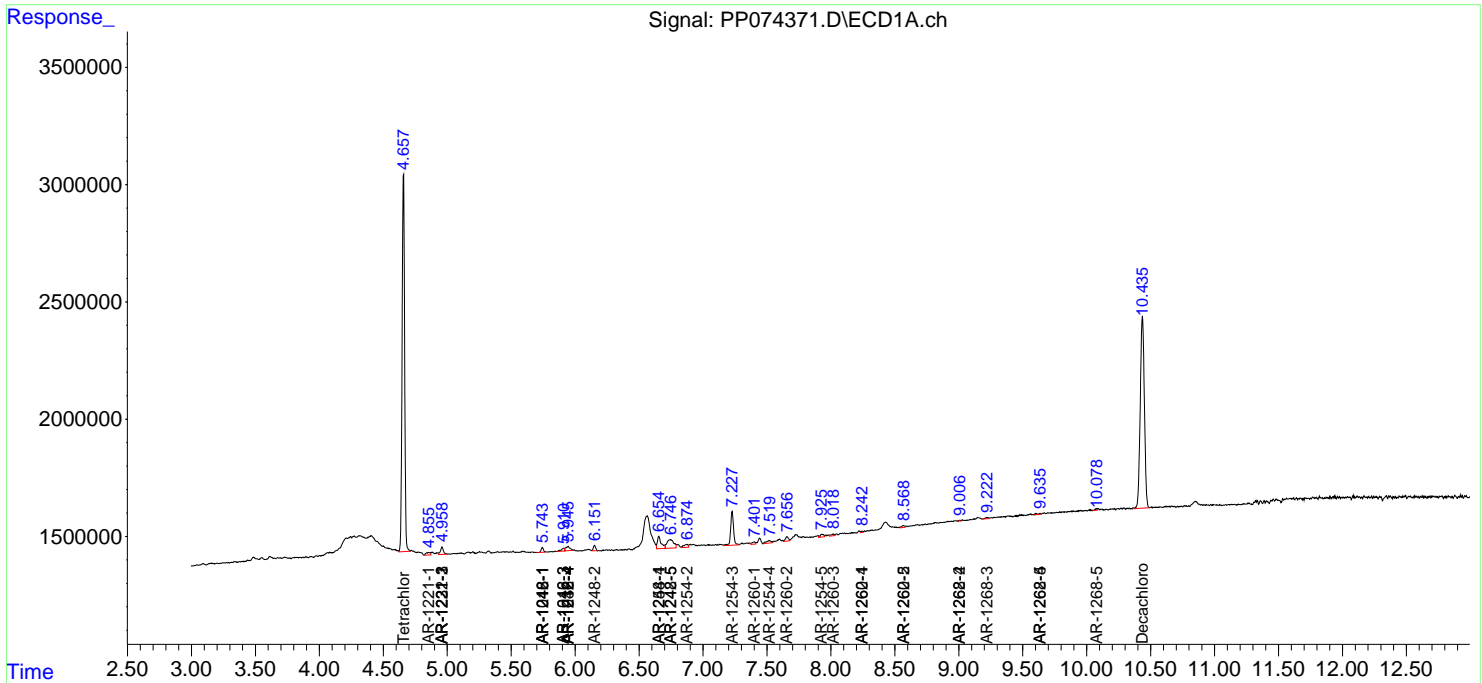
(f)=RT Delta > 1/2 Window (#)=Amounts differ by > 25% (m)=manual int.

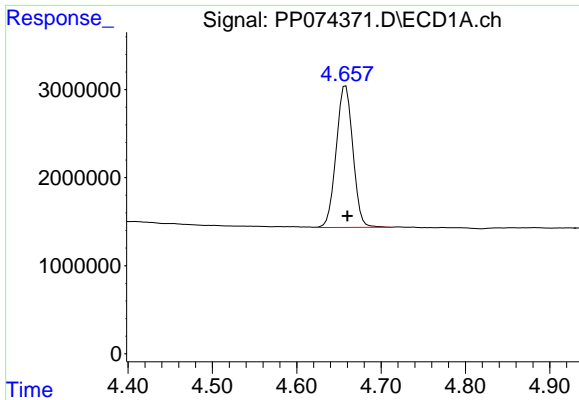
Data Path : Z:\pestpcbsrv\HPCHEM1\ECD\_P\Data\PP081325\  
 Data File : PP074371.D  
 Signal(s) : Signal #1: ECD1A.ch Signal #2: ECD2B.ch  
 Acq On : 14 Aug 2025 00:51  
 Operator : YP\AJ  
 Sample : I.BLK  
 Misc :  
 ALS Vial : 2 Sample Multiplier: 1

Instrument :  
 ECD\_P  
 ClientSampleId :  
 I.BLK

Integration File signal 1: autoint1.e  
 Integration File signal 2: autoint2.e  
 Quant Time: Aug 14 01:51:32 2025  
 Quant Method : Z:\pestpcbsrv\HPCHEM1\ECD\_P\methods\PP080125.M  
 Quant Title : GC EXTRACTABLES  
 QLast Update : Mon Aug 04 11:01:49 2025  
 Response via : Initial Calibration  
 Integrator: ChemStation

Volume Inj. : 2 µl  
 Signal #1 Phase : ZB-MR1 Signal #2 Phase: ZB-MR2  
 Signal #1 Info : 30Mx0.32mmx 0.50µ Signal #2 Info : 30M x 0.32mm x 0.25µm





#1 Tetrachloro-m-xylene

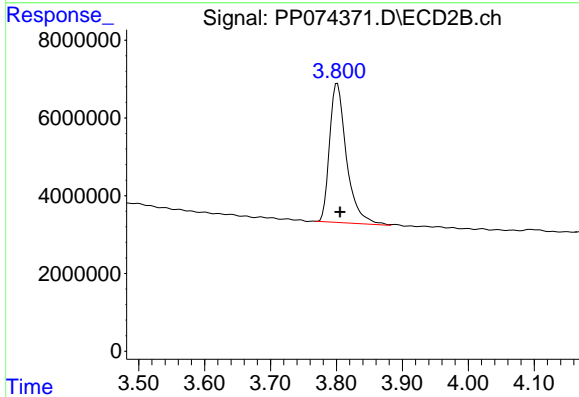
R.T.: 4.658 min

Delta R.T.: -0.002 min

Response: 22075270

Conc: 19.74 ng/ml

Instrument :  
ECD\_P  
ClientSampleId :  
I.BLK



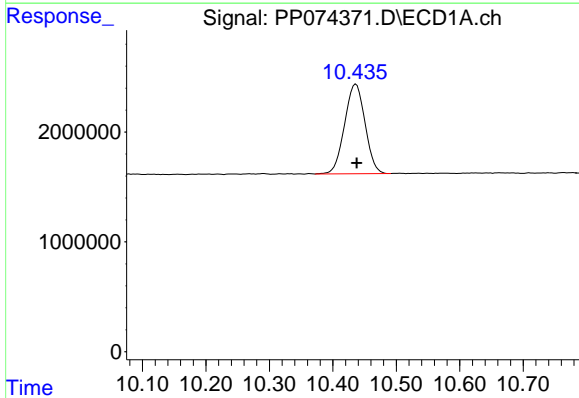
#1 Tetrachloro-m-xylene

R.T.: 3.801 min

Delta R.T.: -0.004 min

Response: 63715124

Conc: 16.62 ng/ml



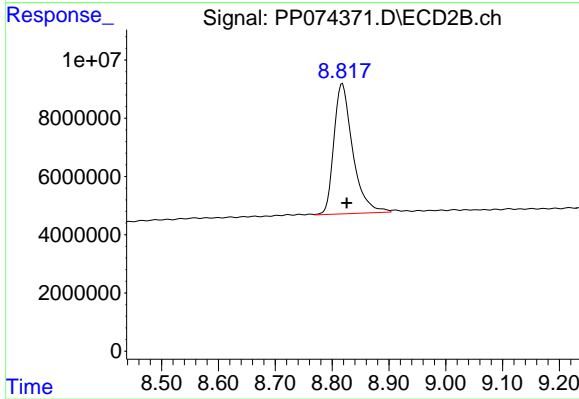
#2 Decachlorobiphenyl

R.T.: 10.437 min

Delta R.T.: -0.001 min

Response: 18298471

Conc: 18.84 ng/ml



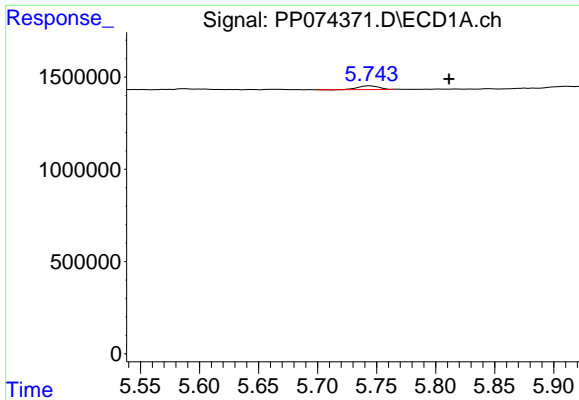
#2 Decachlorobiphenyl

R.T.: 8.818 min

Delta R.T.: -0.008 min

Response: 103145447

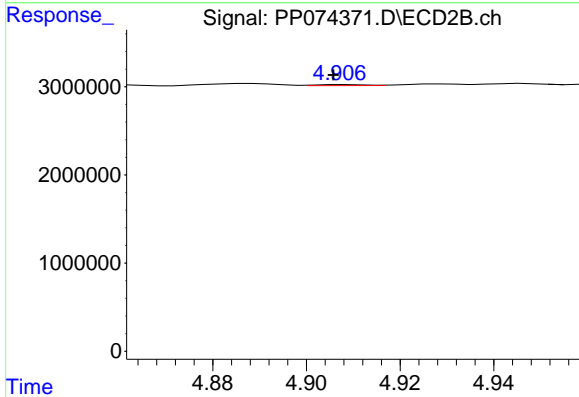
Conc: 17.15 ng/ml



#3 AR-1016-1

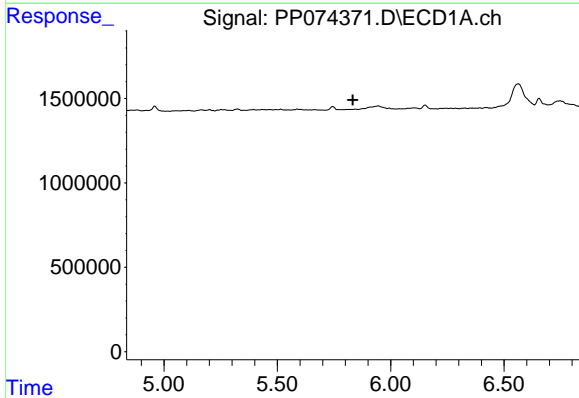
R.T.: 5.745 min  
 Delta R.T.: -0.067 min  
 Response: 240343  
 Conc: 5.83 ng/ml

Instrument :  
 ECD\_P  
 ClientSampleId :  
 I.BLK



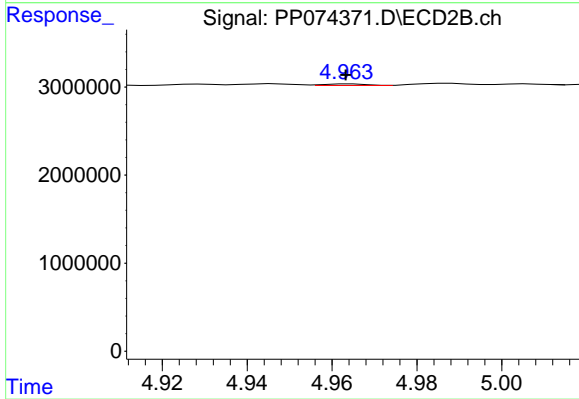
#3 AR-1016-1

R.T.: 4.908 min  
 Delta R.T.: 0.002 min  
 Response: 91763  
 Conc: 0.23 ng/ml



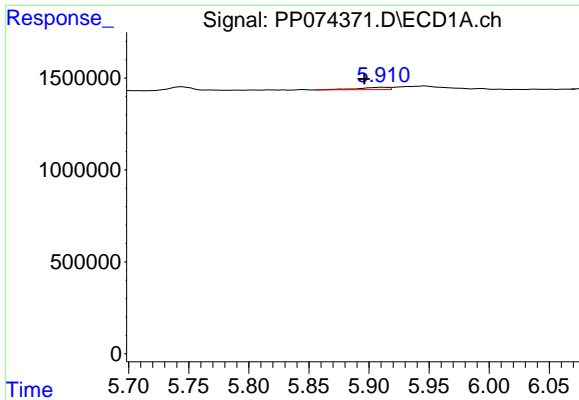
#4 AR-1016-2

R.T.: 0.000 min  
 Exp R.T. : 5.833 min  
 Response: 0  
 Conc: N.D.



#4 AR-1016-2

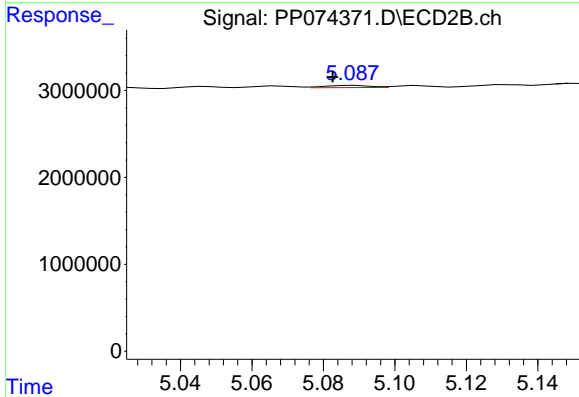
R.T.: 4.964 min  
 Delta R.T.: 0.001 min  
 Response: 123698  
 Conc: 0.66 ng/ml



#5 AR-1016-3

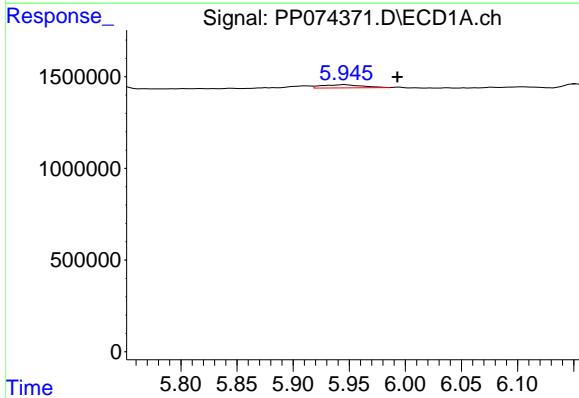
R.T.: 5.911 min  
 Delta R.T.: 0.015 min  
 Response: 214836  
 Conc: 5.42 ng/ml

Instrument :  
 ECD\_P  
 ClientSampleId :  
 I.BLK



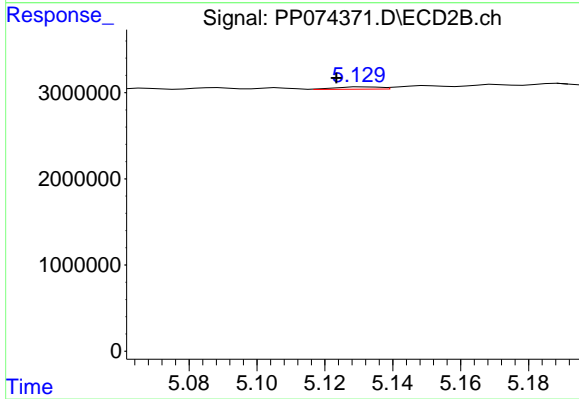
#5 AR-1016-3

R.T.: 5.089 min  
 Delta R.T.: 0.006 min  
 Response: 230784  
 Conc: 2.18 ng/ml



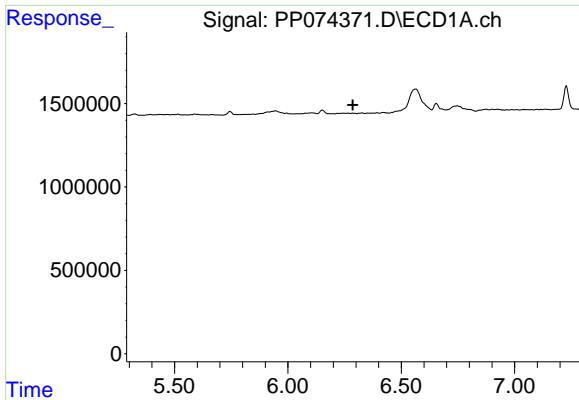
#6 AR-1016-4

R.T.: 5.946 min  
 Delta R.T.: -0.047 min  
 Response: 433701  
 Conc: 13.33 ng/ml



#6 AR-1016-4

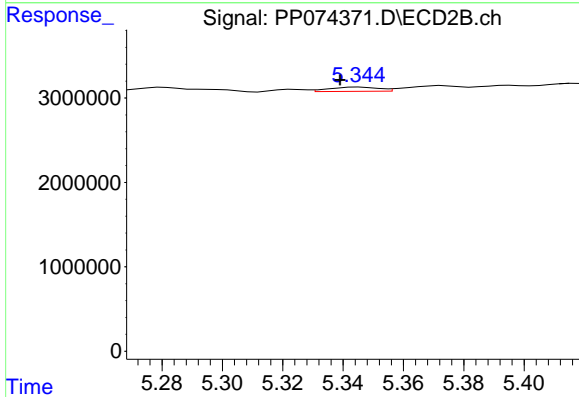
R.T.: 5.131 min  
 Delta R.T.: 0.008 min  
 Response: 240978  
 Conc: 2.21 ng/ml



#7 AR-1016-5

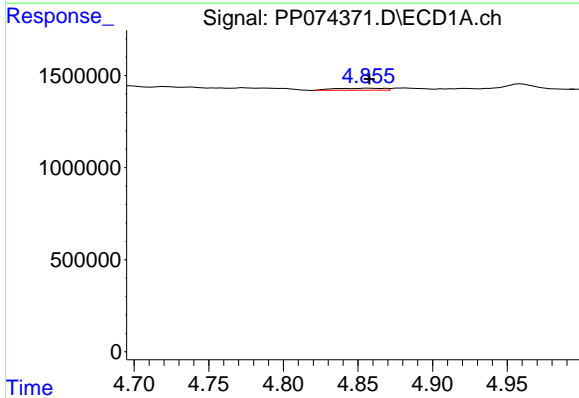
R.T.: 0.000 min  
 Exp R.T.: 6.286 min  
 Response: 0  
 Conc: N.D.

Instrument :  
 ECD\_P  
 ClientSampleId :  
 I.BLK



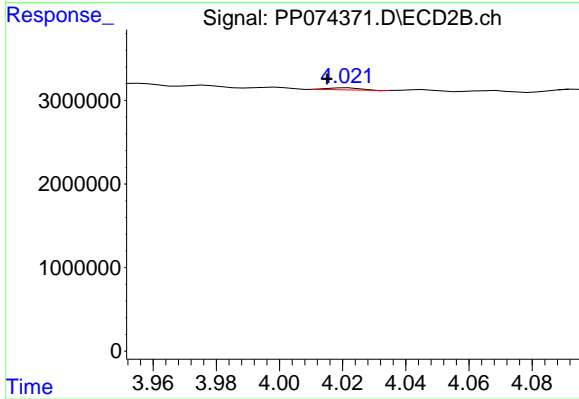
#7 AR-1016-5

R.T.: 5.346 min  
 Delta R.T.: 0.007 min  
 Response: 568238  
 Conc: 4.86 ng/ml



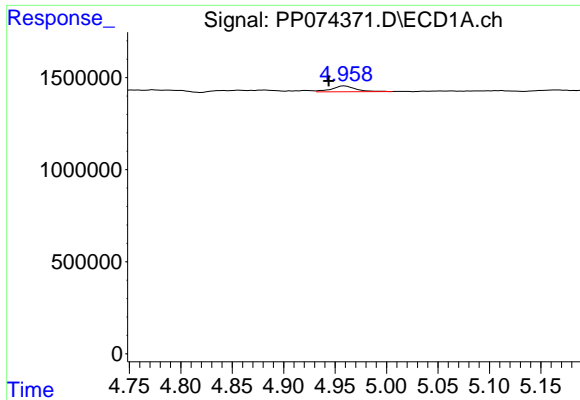
#8 AR-1221-1

R.T.: 4.857 min  
 Delta R.T.: 0.000 min  
 Response: 249541  
 Conc: 14.89 ng/ml



#8 AR-1221-1

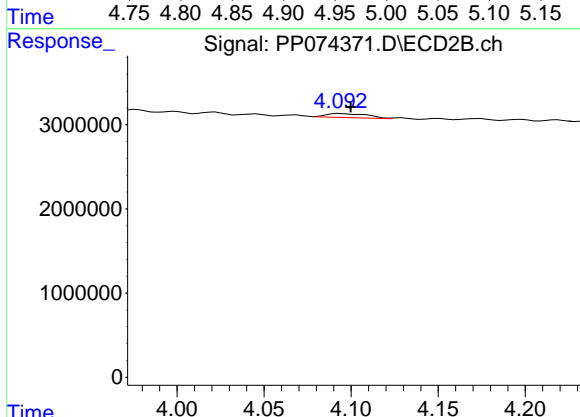
R.T.: 4.022 min  
 Delta R.T.: 0.007 min  
 Response: 187912  
 Conc: 3.83 ng/ml



#9 AR-1221-2

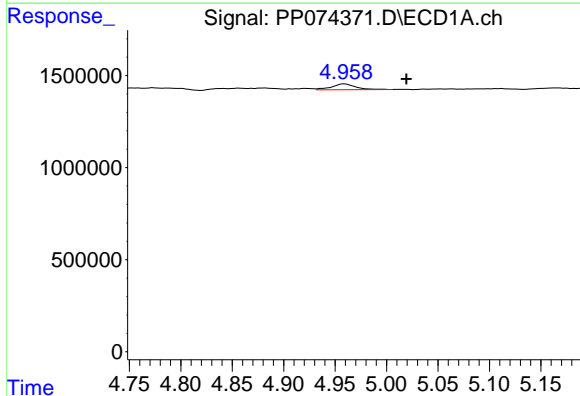
R.T.: 4.960 min  
 Delta R.T.: 0.016 min  
 Response: 519461  
 Conc: 41.22 ng/ml

Instrument :  
 ECD\_P  
 ClientSampleId :  
 I.BLK



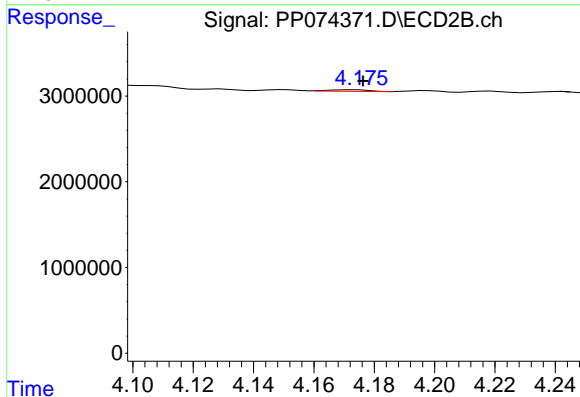
#9 AR-1221-2

R.T.: 4.094 min  
 Delta R.T.: -0.006 min  
 Response: 794850  
 Conc: 22.15 ng/ml



#10 AR-1221-3

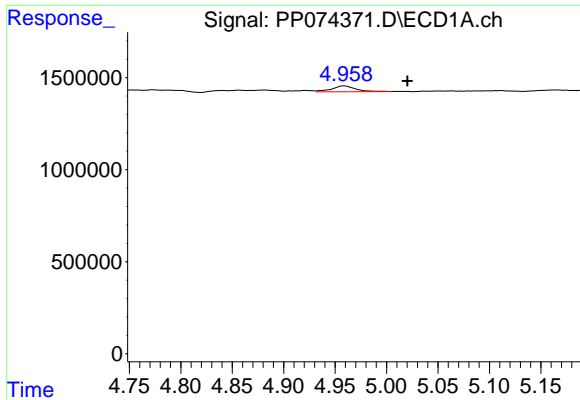
R.T.: 4.960 min  
 Delta R.T.: -0.060 min  
 Response: 519461  
 Conc: 14.18 ng/ml



#10 AR-1221-3

R.T.: 4.174 min  
 Delta R.T.: -0.003 min  
 Response: 170663  
 Conc: 1.26 ng/ml

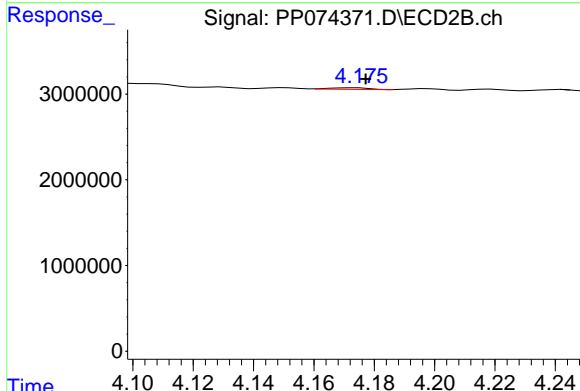




#11 AR-1232-1

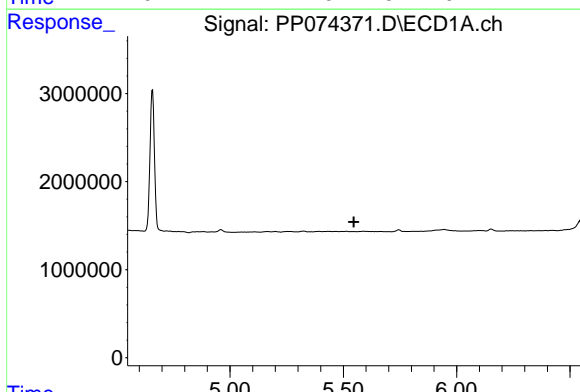
R.T.: 4.960 min  
 Delta R.T.: -0.061 min  
 Response: 519461  
 Conc: 17.89 ng/ml

Instrument :  
 ECD\_P  
 ClientSampleId :  
 I.BLK



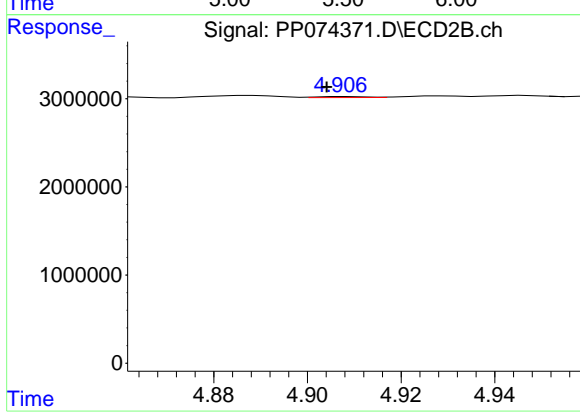
#11 AR-1232-1

R.T.: 4.174 min  
 Delta R.T.: -0.004 min  
 Response: 170663  
 Conc: 1.68 ng/ml



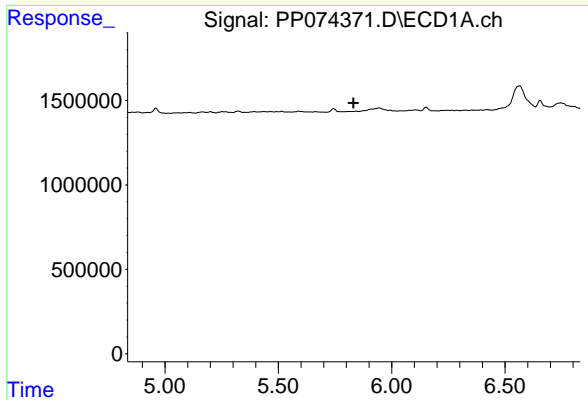
#12 AR-1232-2

R.T.: 0.000 min  
 Exp R.T. : 5.546 min  
 Response: 0  
 Conc: N.D.



#12 AR-1232-2

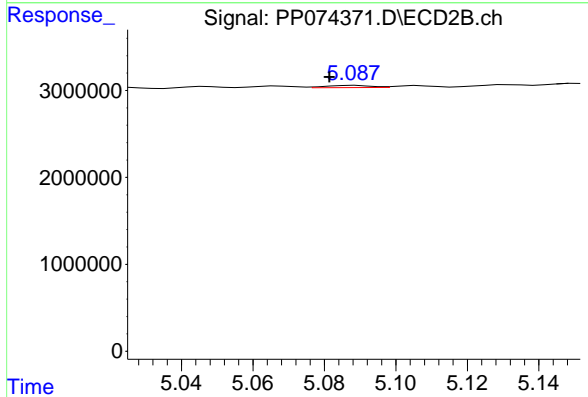
R.T.: 4.908 min  
 Delta R.T.: 0.004 min  
 Response: 91763  
 Conc: 0.53 ng/ml



#13 AR-1232-3

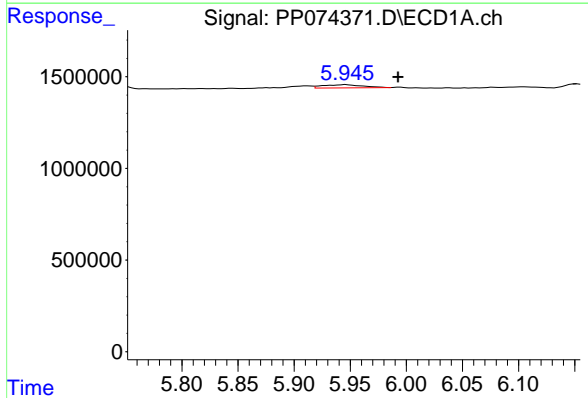
R.T.: 0.000 min  
 Exp R.T.: 5.832 min  
 Response: 0  
 Conc: N.D.

Instrument :  
 ECD\_P  
 ClientSampleId :  
 I.BLK



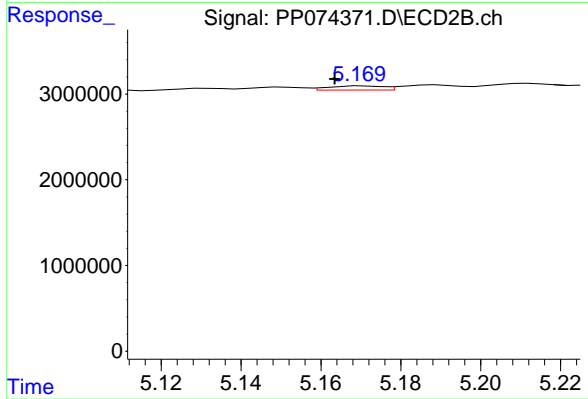
#13 AR-1232-3

R.T.: 5.089 min  
 Delta R.T.: 0.007 min  
 Response: 230784  
 Conc: 5.04 ng/ml



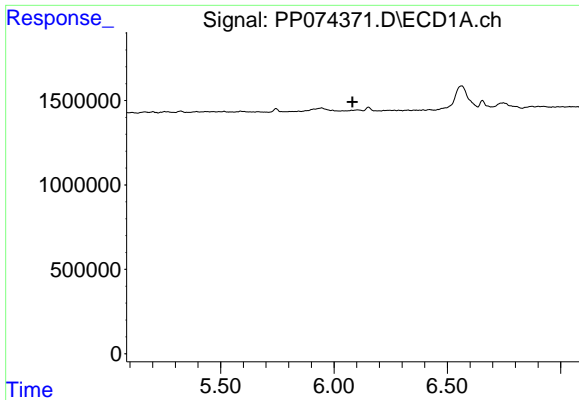
#14 AR-1232-4

R.T.: 5.946 min  
 Delta R.T.: -0.046 min  
 Response: 433701  
 Conc: 28.04 ng/ml



#14 AR-1232-4

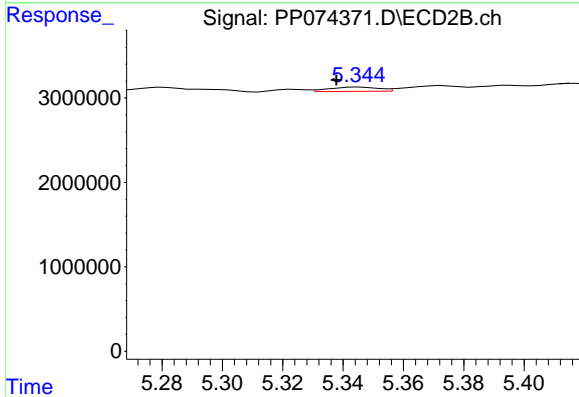
R.T.: 5.171 min  
 Delta R.T.: 0.007 min  
 Response: 460400  
 Conc: 7.94 ng/ml



#15 AR-1232-5

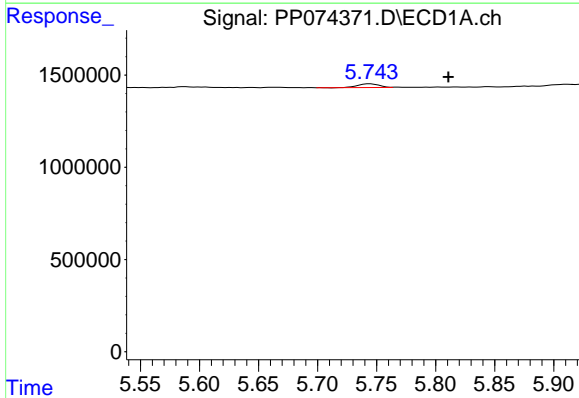
R.T.: 0.000 min  
 Exp R.T.: 6.082 min  
 Response: 0  
 Conc: N.D.

Instrument :  
 ECD\_P  
 ClientSampleId :  
 I.BLK



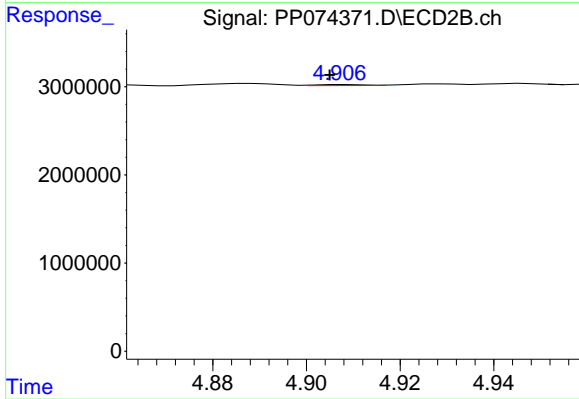
#15 AR-1232-5

R.T.: 5.346 min  
 Delta R.T.: 0.008 min  
 Response: 568238  
 Conc: 12.10 ng/ml



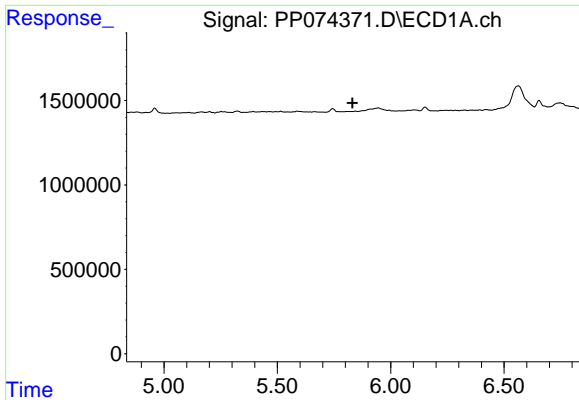
#16 AR-1242-1

R.T.: 5.745 min  
 Delta R.T.: -0.066 min  
 Response: 240343  
 Conc: 6.45 ng/ml



#16 AR-1242-1

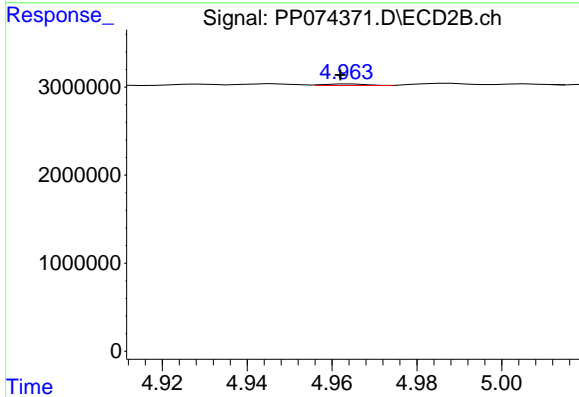
R.T.: 4.908 min  
 Delta R.T.: 0.003 min  
 Response: 91763  
 Conc: 0.27 ng/ml



#17 AR-1242-2

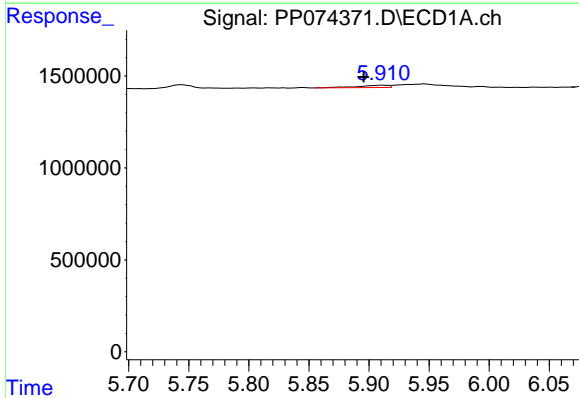
R.T.: 0.000 min  
 Exp R.T.: 5.832 min  
 Response: 0  
 Conc: N.D.

Instrument :  
 ECD\_P  
 ClientSampleId :  
 I.BLK



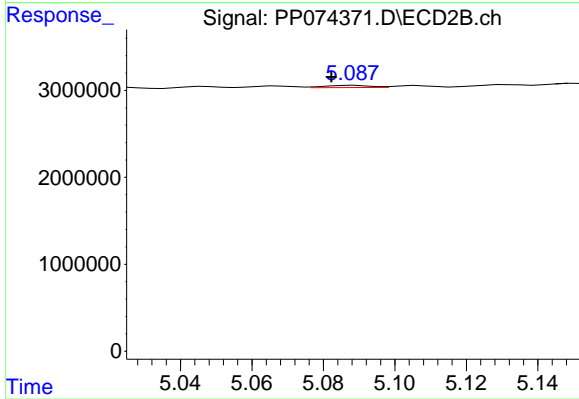
#17 AR-1242-2

R.T.: 4.964 min  
 Delta R.T.: 0.002 min  
 Response: 123698  
 Conc: 0.76 ng/ml



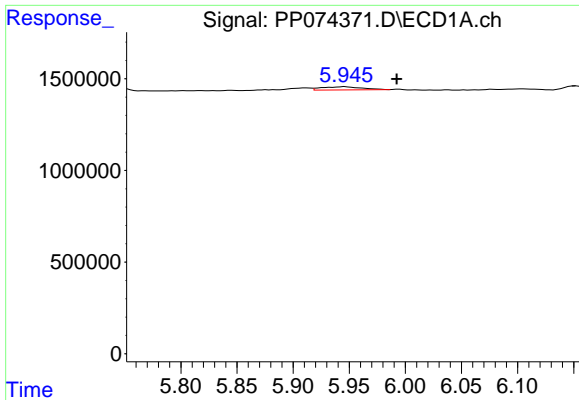
#18 AR-1242-3

R.T.: 5.911 min  
 Delta R.T.: 0.016 min  
 Response: 214836  
 Conc: 6.01 ng/ml



#18 AR-1242-3

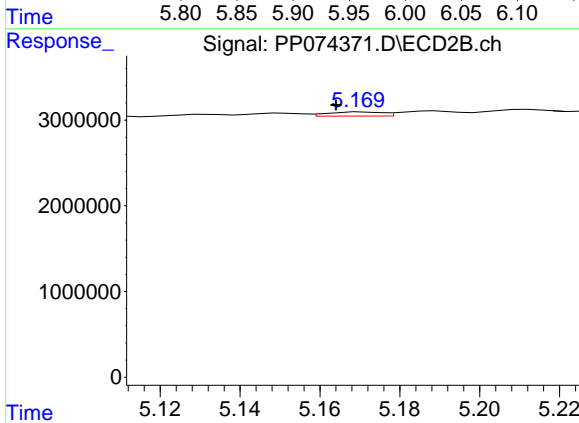
R.T.: 5.089 min  
 Delta R.T.: 0.007 min  
 Response: 230784  
 Conc: 2.50 ng/ml



#19 AR-1242-4

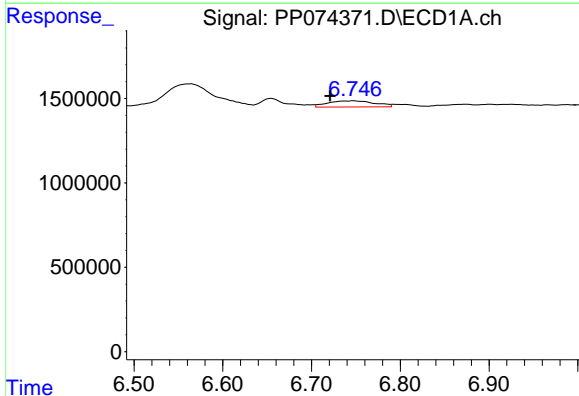
R.T.: 5.946 min  
 Delta R.T.: -0.046 min  
 Response: 433701  
 Conc: 14.84 ng/ml

Instrument :  
 ECD\_P  
 ClientSampleId :  
 I.BLK



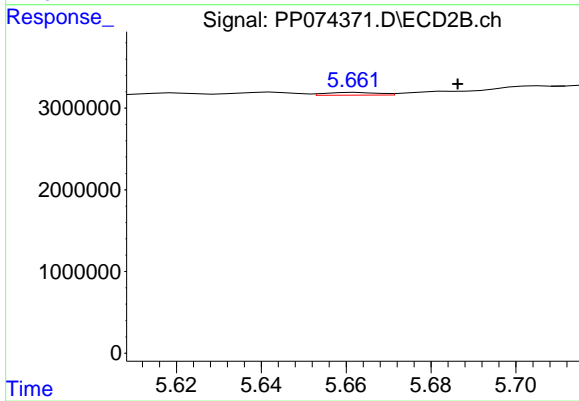
#19 AR-1242-4

R.T.: 5.171 min  
 Delta R.T.: 0.007 min  
 Response: 460400  
 Conc: 3.86 ng/ml



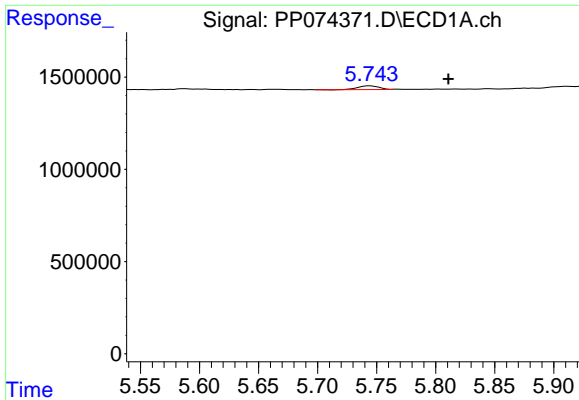
#20 AR-1242-5

R.T.: 6.748 min  
 Delta R.T.: 0.027 min  
 Response: 1323684  
 Conc: 37.23 ng/ml



#20 AR-1242-5

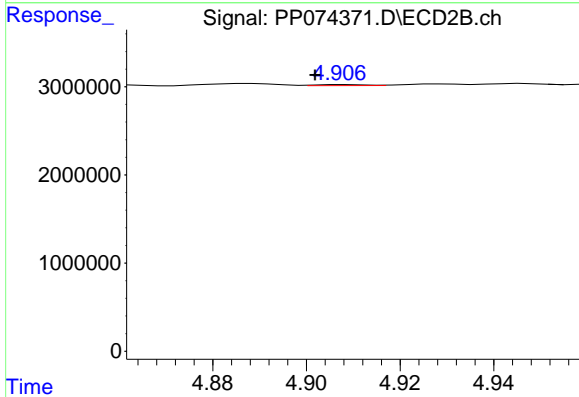
R.T.: 5.663 min  
 Delta R.T.: -0.024 min  
 Response: 288667  
 Conc: 1.93 ng/ml



#21 AR-1248-1

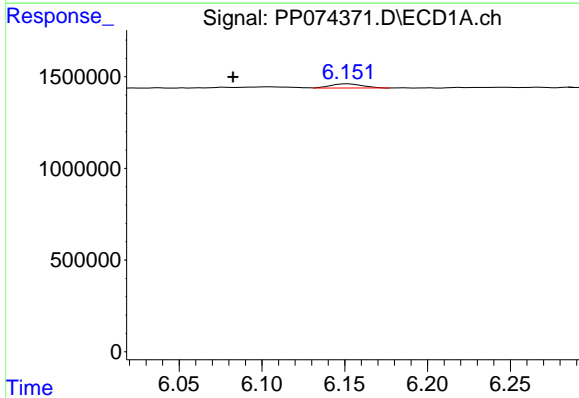
R.T.: 5.745 min  
 Delta R.T.: -0.066 min  
 Response: 240343  
 Conc: 8.58 ng/ml

Instrument :  
 ECD\_P  
 ClientSampleId :  
 I.BLK



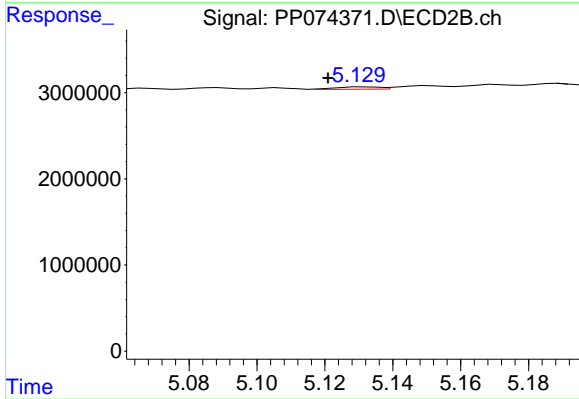
#21 AR-1248-1

R.T.: 4.908 min  
 Delta R.T.: 0.006 min  
 Response: 91763  
 Conc: 0.43 ng/ml



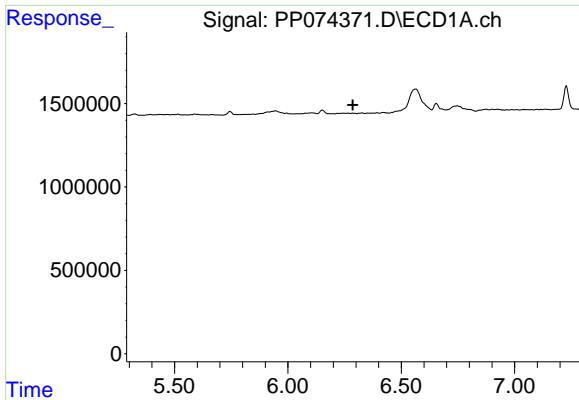
#22 AR-1248-2

R.T.: 6.152 min  
 Delta R.T.: 0.069 min  
 Response: 301139  
 Conc: 7.48 ng/ml



#22 AR-1248-2

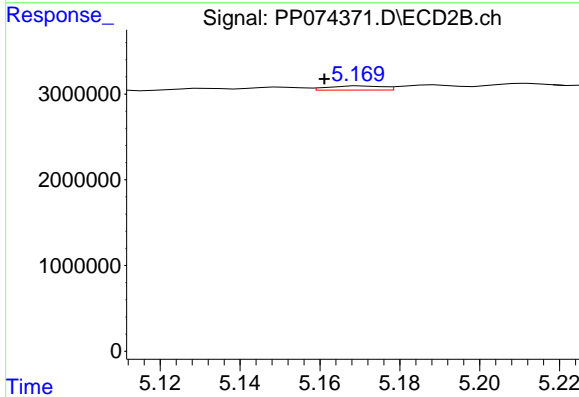
R.T.: 5.131 min  
 Delta R.T.: 0.010 min  
 Response: 240978  
 Conc: 1.65 ng/ml



#23 AR-1248-3

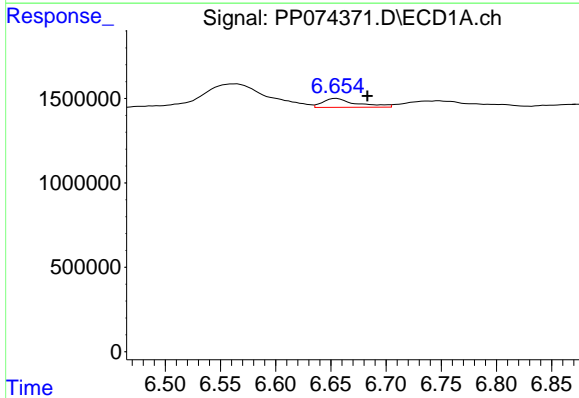
R.T.: 0.000 min  
 Exp R.T.: 6.286 min  
 Response: 0  
 Conc: N.D.

Instrument :  
 ECD\_P  
 ClientSampleId :  
 I.BLK



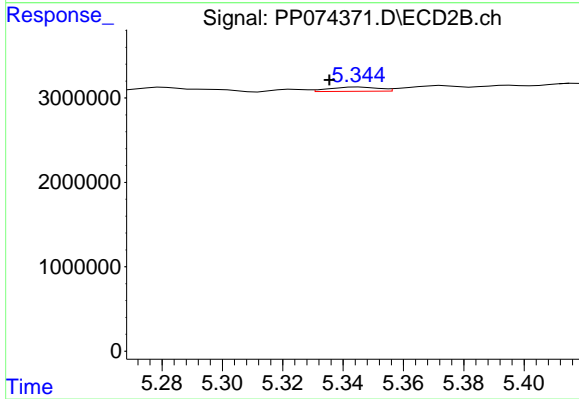
#23 AR-1248-3

R.T.: 5.171 min  
 Delta R.T.: 0.009 min  
 Response: 460400  
 Conc: 2.69 ng/ml



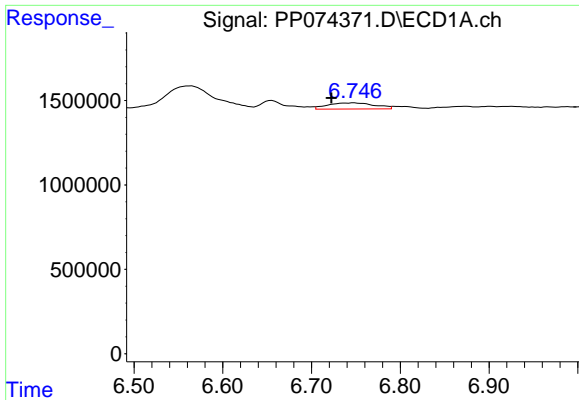
#24 AR-1248-4

R.T.: 6.655 min  
 Delta R.T.: -0.028 min  
 Response: 1112084  
 Conc: 21.37 ng/ml



#24 AR-1248-4

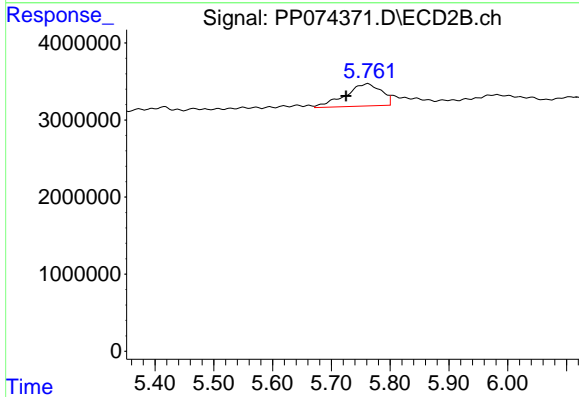
R.T.: 5.346 min  
 Delta R.T.: 0.010 min  
 Response: 568238  
 Conc: 3.42 ng/ml



#25 AR-1248-5

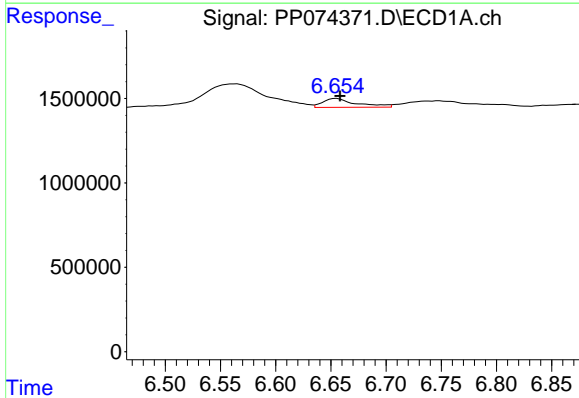
R.T.: 6.748 min  
 Delta R.T.: 0.025 min  
 Response: 1323684  
 Conc: 23.25 ng/ml

Instrument :  
 ECD\_P  
 ClientSampleId :  
 I.BLK



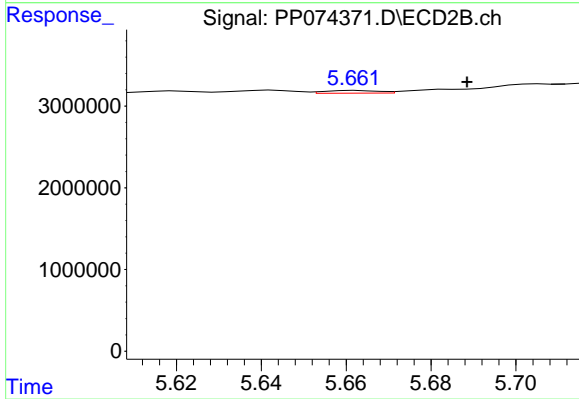
#25 AR-1248-5

R.T.: 5.763 min  
 Delta R.T.: 0.038 min  
 Response: 12259044  
 Conc: 42.13 ng/ml



#26 AR-1254-1

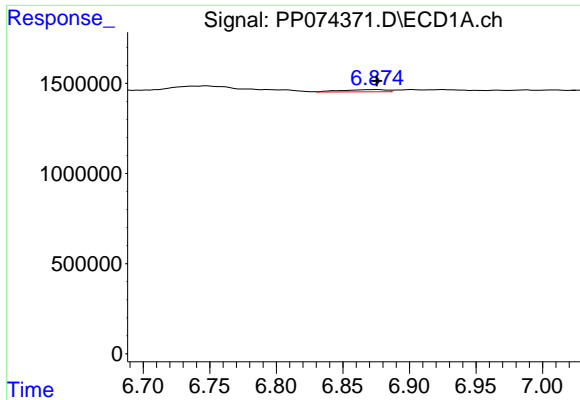
R.T.: 6.655 min  
 Delta R.T.: -0.003 min  
 Response: 1112084  
 Conc: 21.13 ng/ml



#26 AR-1254-1

R.T.: 5.663 min  
 Delta R.T.: -0.026 min  
 Response: 288667  
 Conc: 0.79 ng/ml

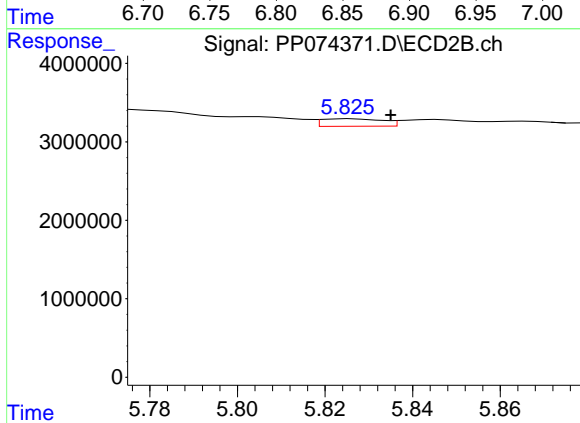




#27 AR-1254-2

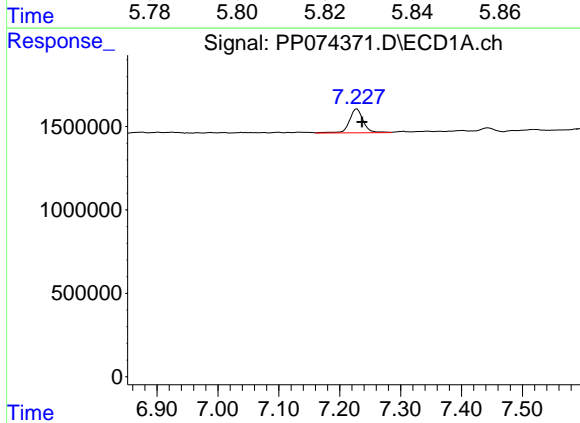
R.T.: 6.875 min  
 Delta R.T.: 0.000 min  
 Response: 290549  
 Conc: 3.65 ng/ml

Instrument :  
 ECD\_P  
 ClientSampleId :  
 I.BLK



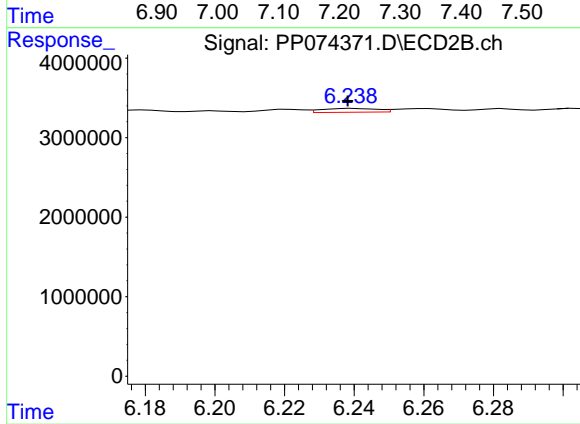
#27 AR-1254-2

R.T.: 5.826 min  
 Delta R.T.: -0.009 min  
 Response: 920521  
 Conc: 3.31 ng/ml



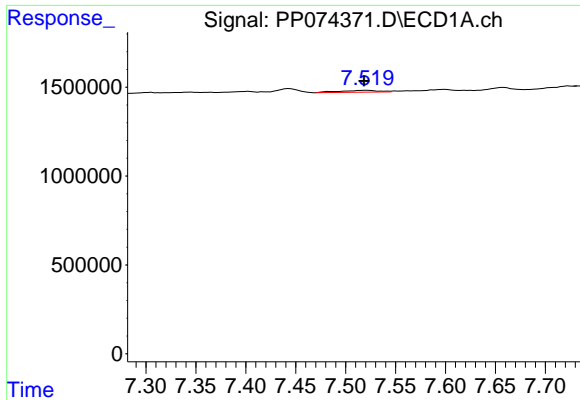
#28 AR-1254-3

R.T.: 7.228 min  
 Delta R.T.: -0.009 min  
 Response: 2277533  
 Conc: 26.08 ng/ml



#28 AR-1254-3

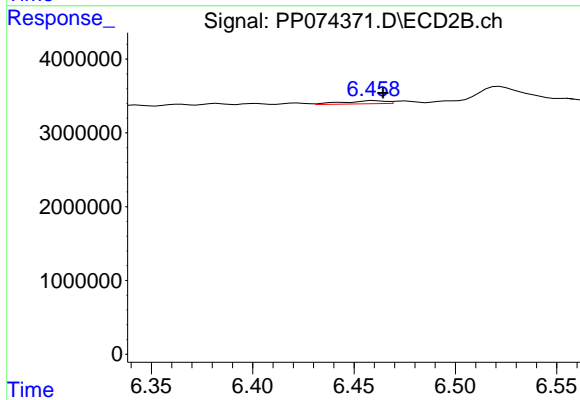
R.T.: 6.239 min  
 Delta R.T.: 0.001 min  
 Response: 541122  
 Conc: 1.11 ng/ml



#29 AR-1254-4

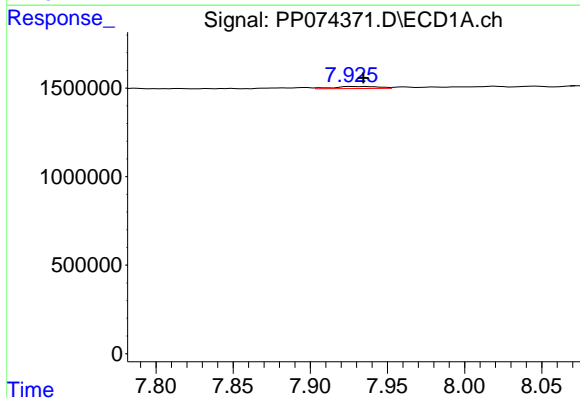
R.T.: 7.521 min  
 Delta R.T.: 0.003 min  
 Response: 292062  
 Conc: 4.58 ng/ml

Instrument :  
 ECD\_P  
 ClientSampleId :  
 I.BLK



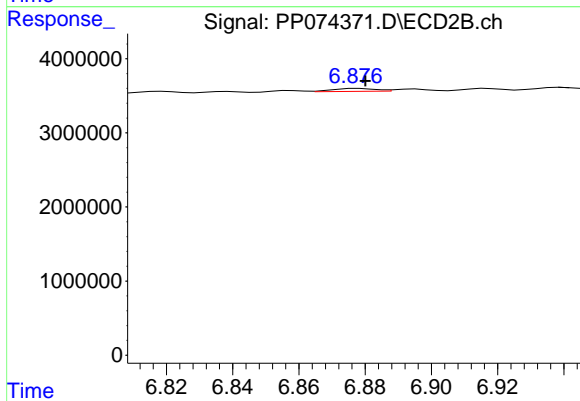
#29 AR-1254-4

R.T.: 6.460 min  
 Delta R.T.: -0.004 min  
 Response: 608069  
 Conc: 1.65 ng/ml



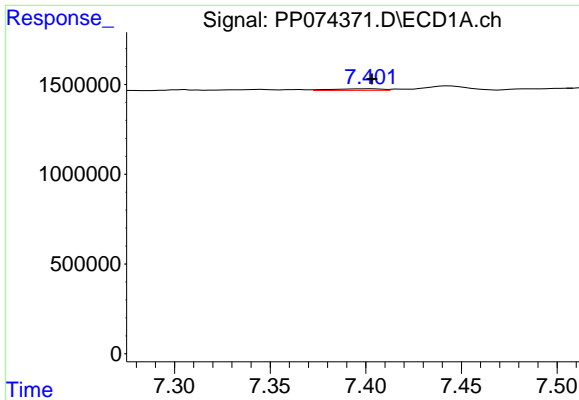
#30 AR-1254-5

R.T.: 7.927 min  
 Delta R.T.: -0.008 min  
 Response: 236781  
 Conc: 2.92 ng/ml



#30 AR-1254-5

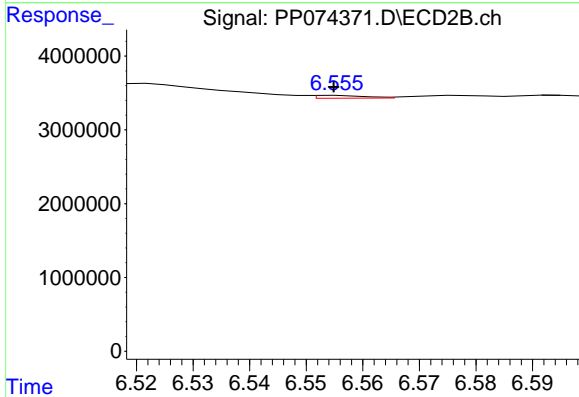
R.T.: 6.878 min  
 Delta R.T.: -0.002 min  
 Response: 363776  
 Conc: 0.94 ng/ml



#31 AR-1260-1

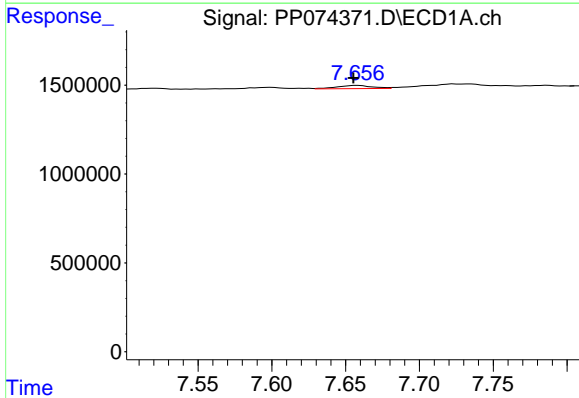
R.T.: 7.403 min  
 Delta R.T.: 0.000 min  
 Response: 163189  
 Conc: 2.90 ng/ml

Instrument :  
 ECD\_P  
 ClientSampleId :  
 I.BLK



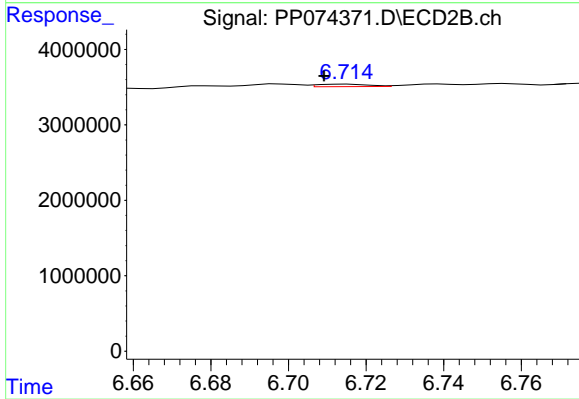
#31 AR-1260-1

R.T.: 6.555 min  
 Delta R.T.: 0.000 min  
 Response: 245410  
 Conc: 0.61 ng/ml



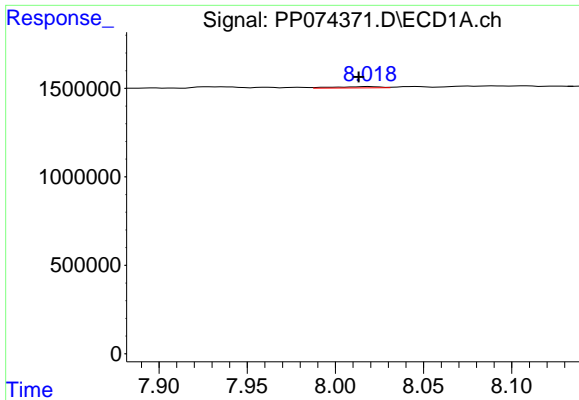
#32 AR-1260-2

R.T.: 7.658 min  
 Delta R.T.: 0.003 min  
 Response: 305773  
 Conc: 4.49 ng/ml



#32 AR-1260-2

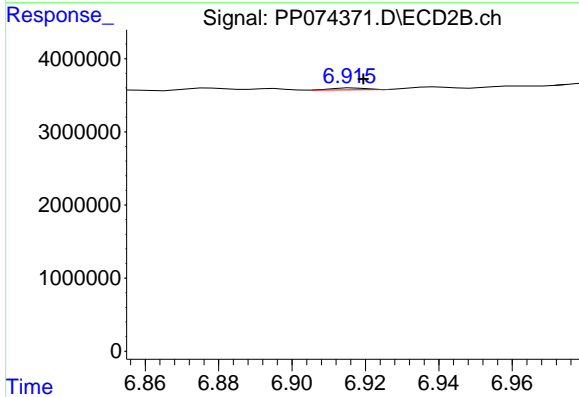
R.T.: 6.715 min  
 Delta R.T.: 0.006 min  
 Response: 296923  
 Conc: 0.95 ng/ml



#33 AR-1260-3

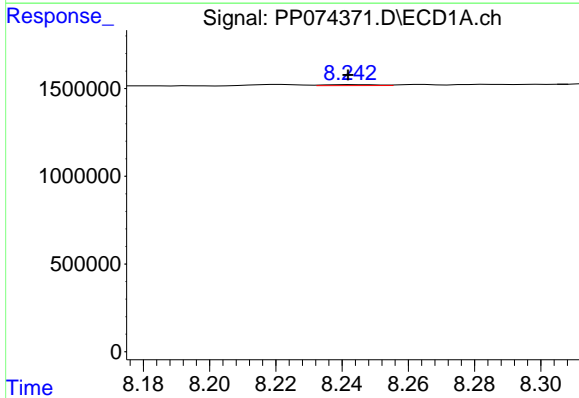
R.T.: 8.019 min  
 Delta R.T.: 0.006 min  
 Response: 132320  
 Conc: 2.48 ng/ml

Instrument :  
 ECD\_P  
 ClientSampleId :  
 I.BLK



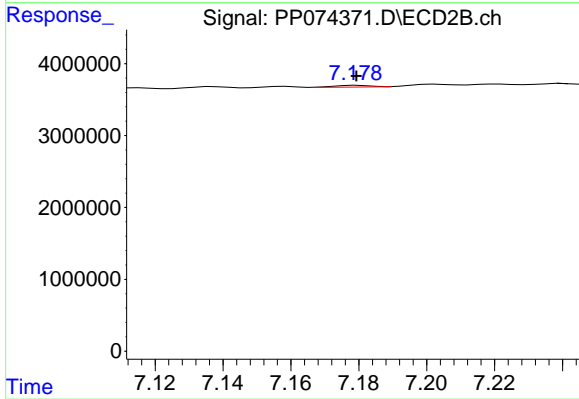
#33 AR-1260-3

R.T.: 6.917 min  
 Delta R.T.: -0.003 min  
 Response: 170667  
 Conc: 0.43 ng/ml



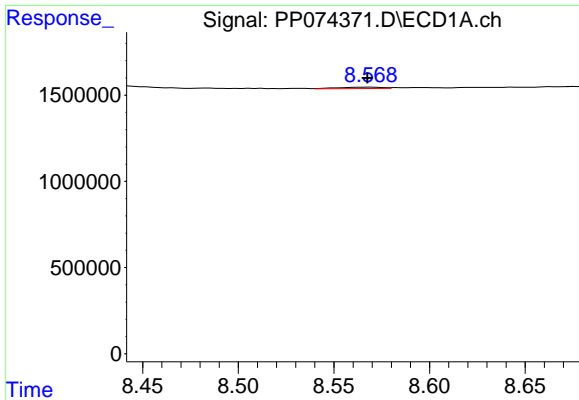
#34 AR-1260-4

R.T.: 8.243 min  
 Delta R.T.: 0.002 min  
 Response: 59276  
 Conc: 0.95 ng/ml



#34 AR-1260-4

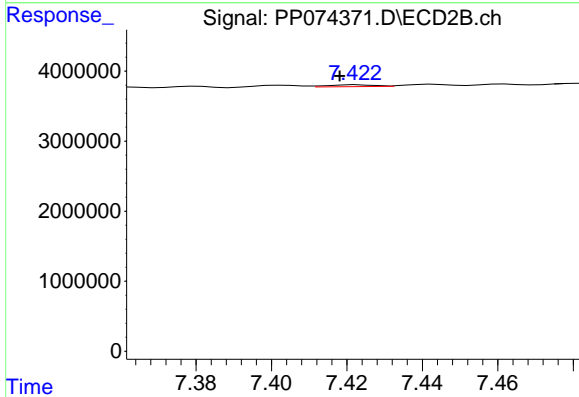
R.T.: 7.180 min  
 Delta R.T.: 0.000 min  
 Response: 189687  
 Conc: 0.65 ng/ml



#35 AR-1260-5

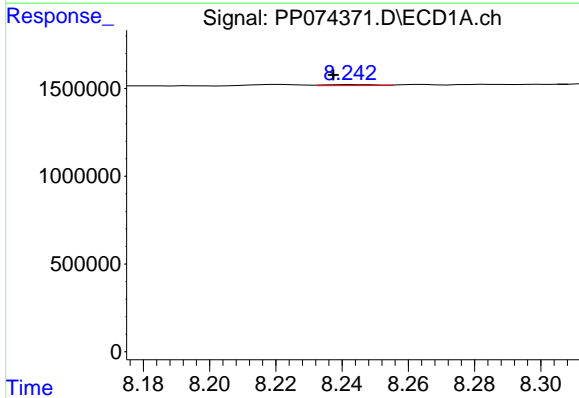
R.T.: 8.569 min  
 Delta R.T.: 0.002 min  
 Response: 132797  
 Conc: 1.17 ng/ml

Instrument :  
 ECD\_P  
 ClientSampleId :  
 I.BLK



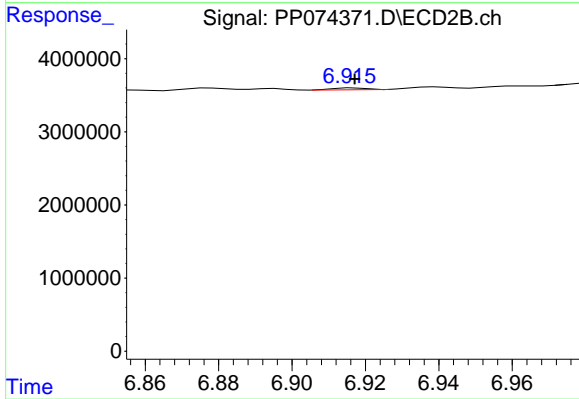
#35 AR-1260-5

R.T.: 7.423 min  
 Delta R.T.: 0.005 min  
 Response: 234273  
 Conc: 0.31 ng/ml



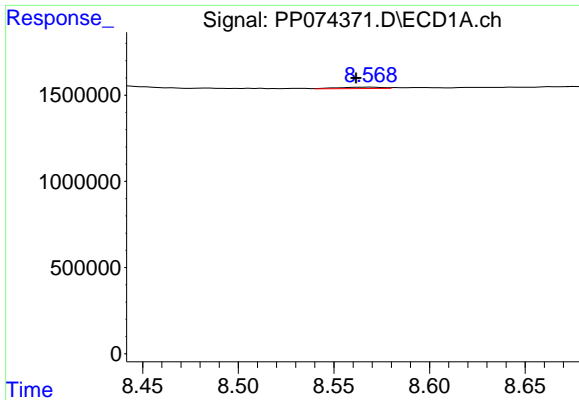
#36 AR-1262-1

R.T.: 8.243 min  
 Delta R.T.: 0.006 min  
 Response: 59276  
 Conc: 0.78 ng/ml



#36 AR-1262-1

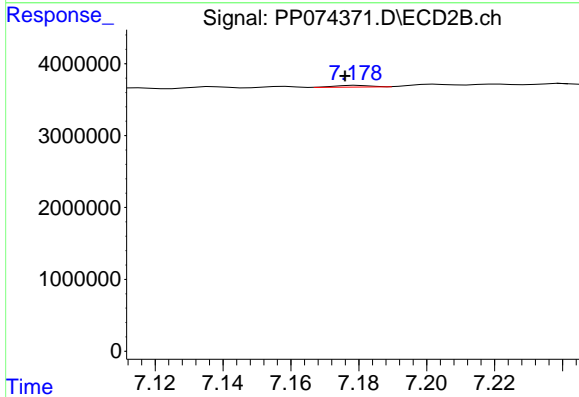
R.T.: 6.917 min  
 Delta R.T.: 0.000 min  
 Response: 170667  
 Conc: 0.30 ng/ml



#37 AR-1262-2

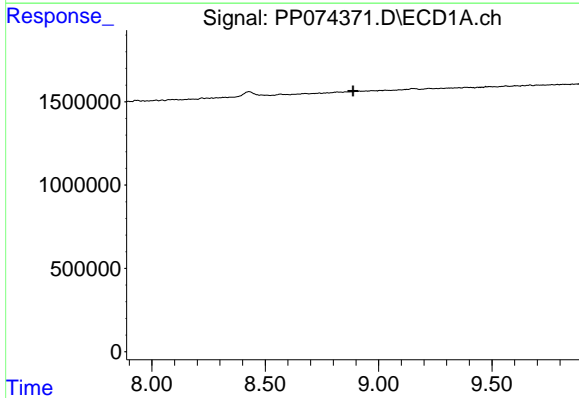
R.T.: 8.569 min  
 Delta R.T.: 0.008 min  
 Response: 132797  
 Conc: 1.02 ng/ml

Instrument :  
 ECD\_P  
 ClientSampleId :  
 I.BLK



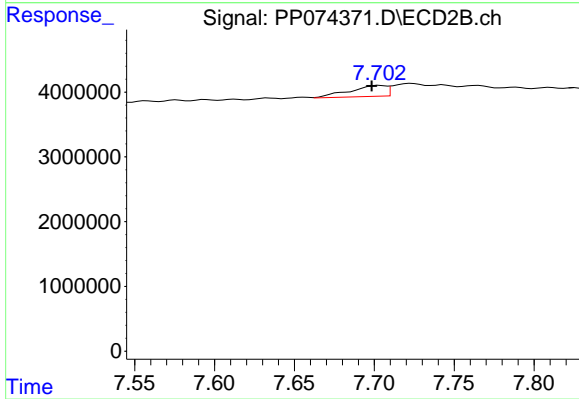
#37 AR-1262-2

R.T.: 7.180 min  
 Delta R.T.: 0.004 min  
 Response: 189687  
 Conc: 0.47 ng/ml



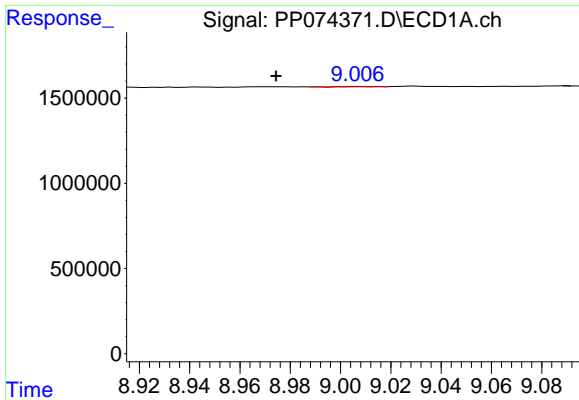
#38 AR-1262-3

R.T.: 0.000 min  
 Exp R.T. : 8.888 min  
 Response: 0  
 Conc: N.D.



#38 AR-1262-3

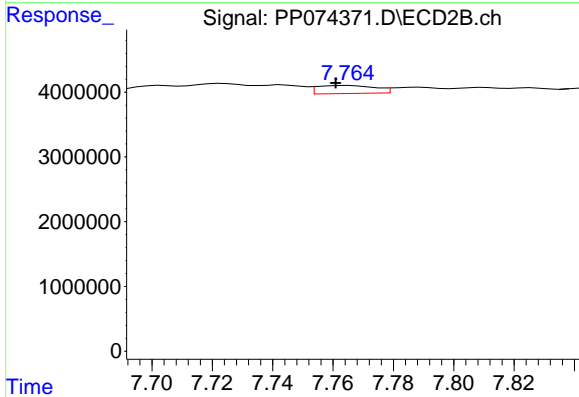
R.T.: 7.703 min  
 Delta R.T.: 0.005 min  
 Response: 2679159  
 Conc: 7.45 ng/ml



#39 AR-1262-4

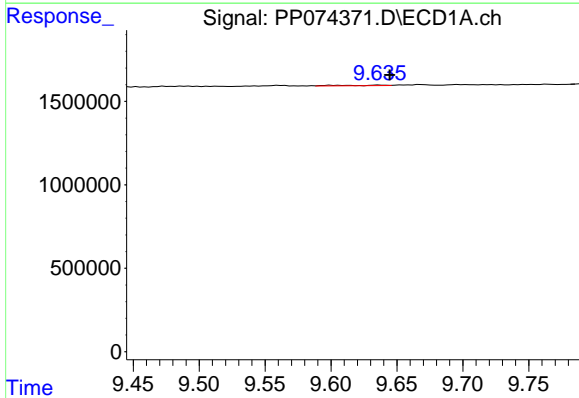
R.T.: 9.007 min  
 Delta R.T.: 0.033 min  
 Response: 14554  
 Conc: 0.20 ng/ml

Instrument :  
 ECD\_P  
 ClientSampleId :  
 I.BLK



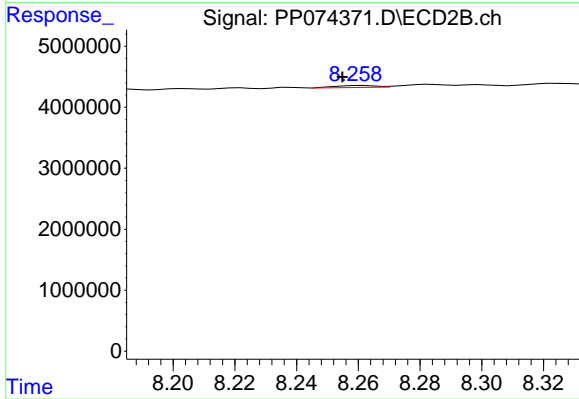
#39 AR-1262-4

R.T.: 7.765 min  
 Delta R.T.: 0.004 min  
 Response: 1629069  
 Conc: 2.44 ng/ml



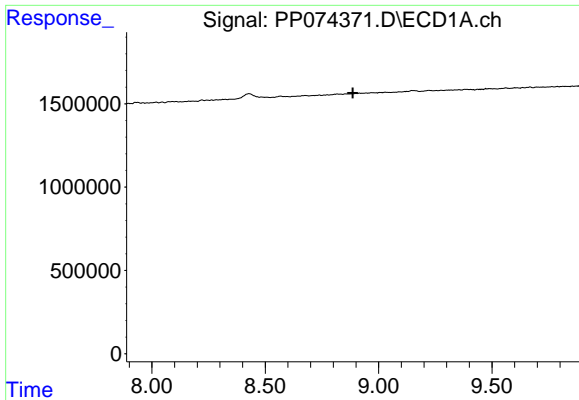
#40 AR-1262-5

R.T.: 9.636 min  
 Delta R.T.: -0.008 min  
 Response: 81081  
 Conc: 1.59 ng/ml



#40 AR-1262-5

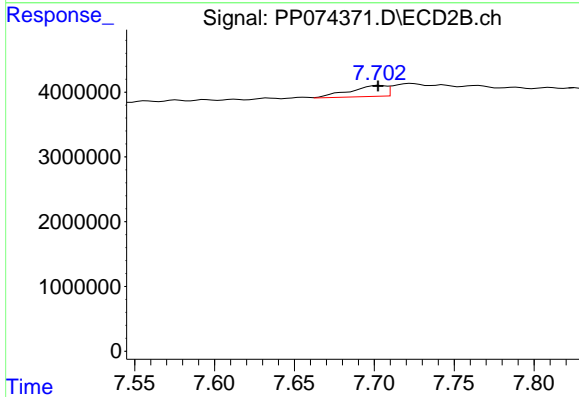
R.T.: 8.261 min  
 Delta R.T.: 0.006 min  
 Response: 287300  
 Conc: 1.01 ng/ml



#41 AR-1268-1

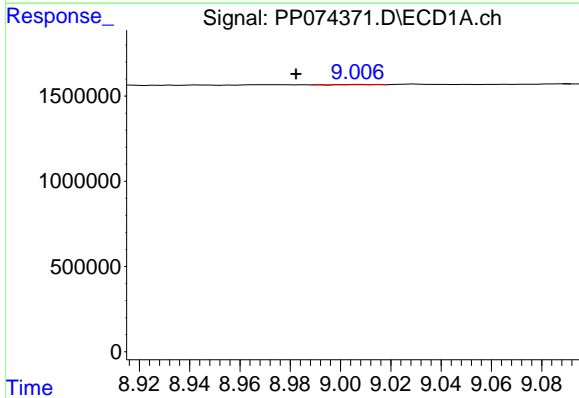
R.T.: 0.000 min  
 Exp R.T.: 8.886 min  
 Response: 0  
 Conc: N.D.

Instrument :  
 ECD\_P  
 ClientSampleId :  
 I.BLK



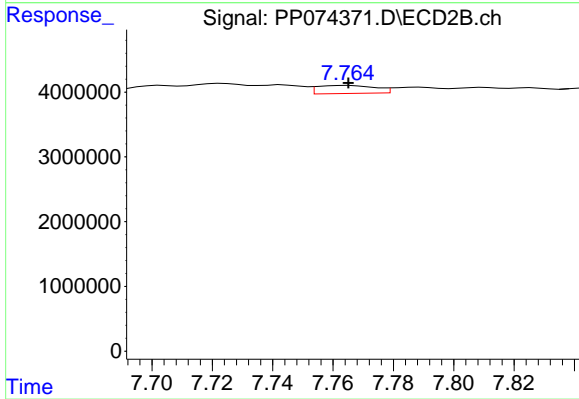
#41 AR-1268-1

R.T.: 7.703 min  
 Delta R.T.: 0.000 min  
 Response: 2679159  
 Conc: 2.46 ng/ml



#42 AR-1268-2

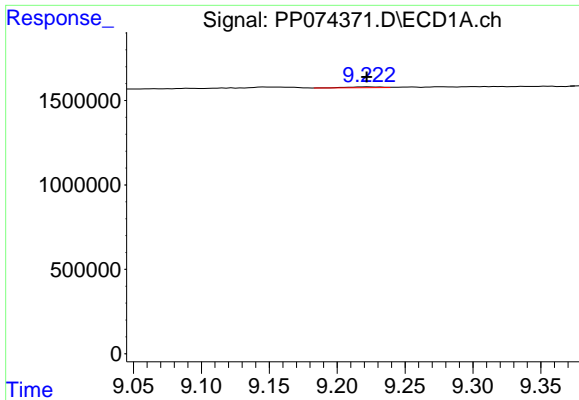
R.T.: 9.007 min  
 Delta R.T.: 0.025 min  
 Response: 14554  
 Conc: 0.10 ng/ml



#42 AR-1268-2

R.T.: 7.765 min  
 Delta R.T.: 0.000 min  
 Response: 1629069  
 Conc: 1.53 ng/ml

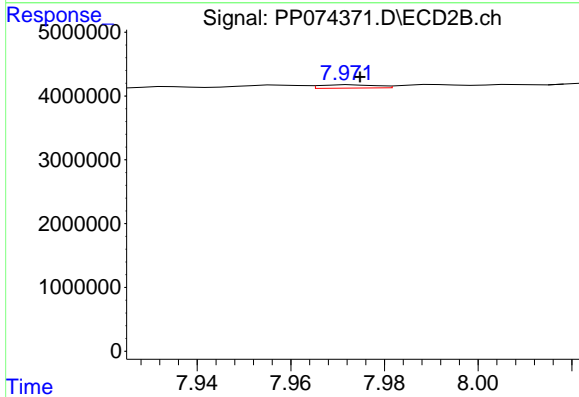




#43 AR-1268-3

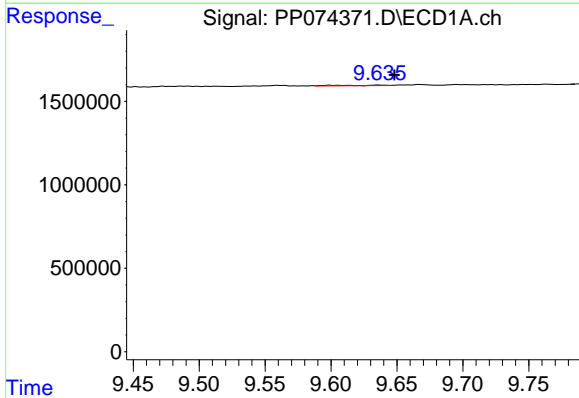
R.T.: 9.223 min  
 Delta R.T.: 0.002 min  
 Response: 96488  
 Conc: 0.81 ng/ml

Instrument :  
 ECD\_P  
 ClientSampleId :  
 I.BLK



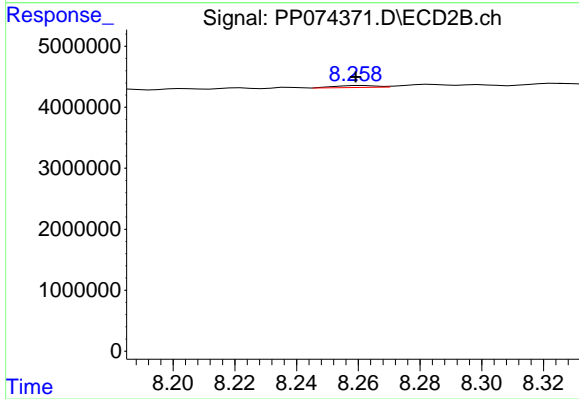
#43 AR-1268-3

R.T.: 7.973 min  
 Delta R.T.: -0.002 min  
 Response: 430065  
 Conc: 0.52 ng/ml



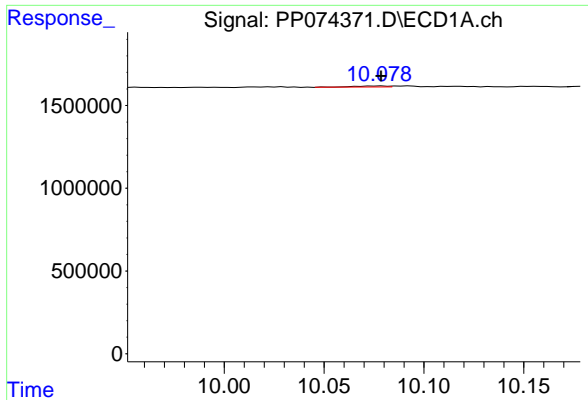
#44 AR-1268-4

R.T.: 9.636 min  
 Delta R.T.: -0.012 min  
 Response: 81081  
 Conc: 1.38 ng/ml



#44 AR-1268-4

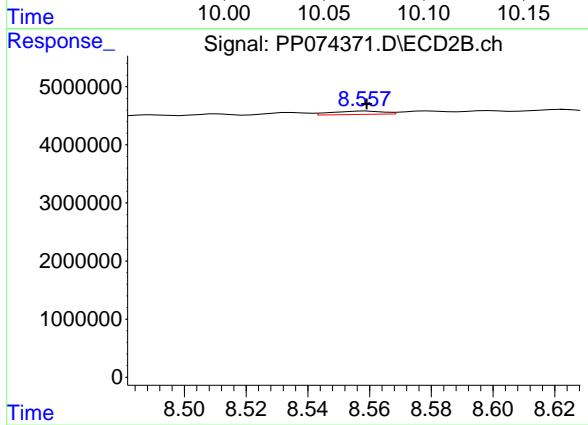
R.T.: 8.261 min  
 Delta R.T.: 0.002 min  
 Response: 287300  
 Conc: 0.93 ng/ml



#45 AR-1268-5

R.T.: 10.079 min  
 Delta R.T.: 0.000 min  
 Response: 74640  
 Conc: 0.21 ng/ml

Instrument :  
 ECD\_P  
 ClientSampleId :  
 I.BLK



#45 AR-1268-5

R.T.: 8.559 min  
 Delta R.T.: 0.000 min  
 Response: 662432  
 Conc: 0.26 ng/ml