

Data Path : Z:\pestpcbsrv\HPCHEM1\ECD_P\Data\PP081325\
 Data File : PP074334.D
 Signal(s) : Signal #1: ECD1A.ch Signal #2: ECD2B.ch
 Acq On : 13 Aug 2025 09:04
 Operator : YP\AJ
 Sample : AR1660CCC500
 Misc :
 ALS Vial : 3 Sample Multiplier: 1

Instrument :
 ECD_P
ClientSampleId :
 AR1660CCC500

Integration File signal 1: autoint1.e
 Integration File signal 2: autoint2.e
 Quant Time: Aug 13 11:44:15 2025
 Quant Method : Z:\pestpcbsrv\HPCHEM1\ECD_P\methods\PP080125.M
 Quant Title : GC EXTRACTABLES
 QLast Update : Mon Aug 04 11:01:49 2025
 Response via : Initial Calibration
 Integrator: ChemStation

Volume Inj. : 2 µl
 Signal #1 Phase : ZB-MR1 Signal #2 Phase: ZB-MR2
 Signal #1 Info : 30Mx0.32mmx 0.50µ Signal #2 Info : 30M x 0.32mm x 0.25µm

Compound	RT#1	RT#2	Resp#1	Resp#2	ng/ml	ng/ml

System Monitoring Compounds						
1) SA Tetrachlo...	4.657	3.801	60699336	228.8E6	54.278	59.683
2) SA Decachlor...	10.436	8.819	47494711	317.4E6	48.905	52.781
Target Compounds						
3) L1 AR-1016-1	5.809	4.900	21431398	226.5E6	519.463	567.909
4) L1 AR-1016-2	5.830	4.958	31817130	108.4E6	523.810	577.259
5) L1 AR-1016-3	5.893	5.079	21118183	59799212	532.474	563.773
6) L1 AR-1016-4	5.990	5.119	17405958	62295116	534.836	570.363
7) L1 AR-1016-5	6.283	5.334	17110565	69184133	526.997	591.503
31) L7 AR-1260-1	7.400	6.550	28408257	220.4E6	504.085	545.642
32) L7 AR-1260-2	7.653	6.705	33046210	168.3E6	484.887	538.092
33) L7 AR-1260-3	8.011	6.915	26246958	222.6E6	492.476	564.732
34) L7 AR-1260-4	8.239	7.175	30941970	159.8E6	494.162	549.315
35) L7 AR-1260-5	8.565	7.414	53781862	418.8E6	474.665	552.872

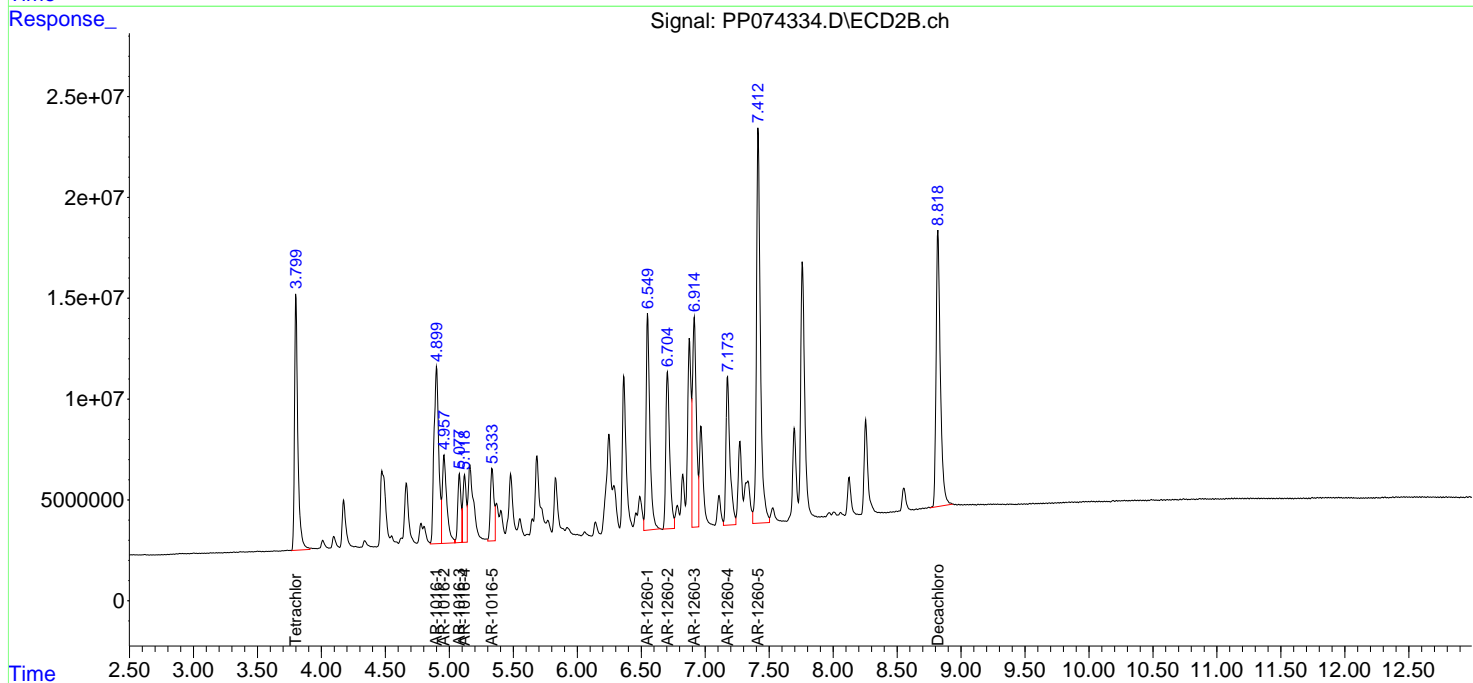
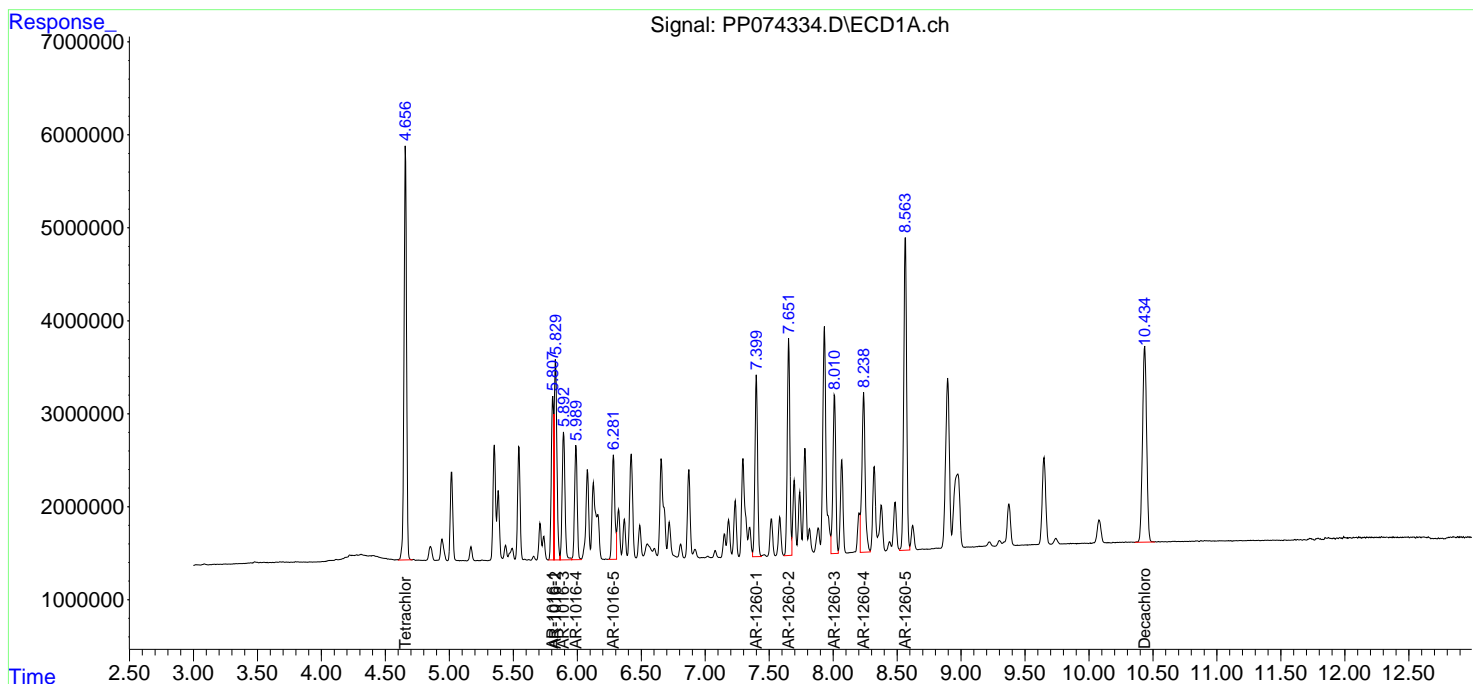
(f)=RT Delta > 1/2 Window (#)=Amounts differ by > 25% (m)=manual int.

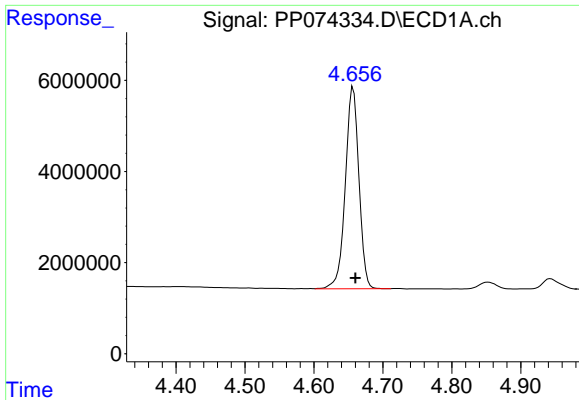
Data Path : Z:\pestpcbsrv\HPCHEM1\ECD_P\Data\PP081325\
 Data File : PP074334.D
 Signal(s) : Signal #1: ECD1A.ch Signal #2: ECD2B.ch
 Acq On : 13 Aug 2025 09:04
 Operator : YP\AJ
 Sample : AR1660CCC500
 Misc :
 ALS Vial : 3 Sample Multiplier: 1

Instrument :
 ECD_P
 ClientSampleId :
 AR1660CCC500

Integration File signal 1: autoint1.e
 Integration File signal 2: autoint2.e
 Quant Time: Aug 13 11:44:15 2025
 Quant Method : Z:\pestpcbsrv\HPCHEM1\ECD_P\methods\PP080125.M
 Quant Title : GC EXTRACTABLES
 QLast Update : Mon Aug 04 11:01:49 2025
 Response via : Initial Calibration
 Integrator: ChemStation

Volume Inj. : 2 µl
 Signal #1 Phase : ZB-MR1 Signal #2 Phase: ZB-MR2
 Signal #1 Info : 30Mx0.32mmx 0.50µ Signal #2 Info : 30M x 0.32mm x 0.25µm

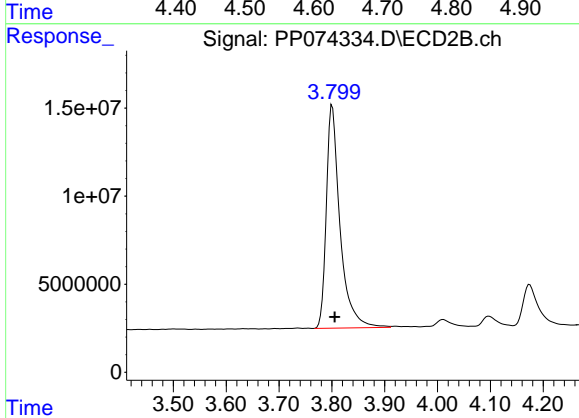




#1 Tetrachloro-m-xylene

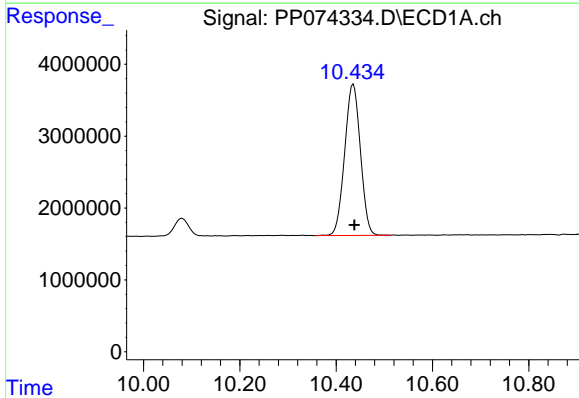
R.T.: 4.657 min
Delta R.T.: -0.003 min
Response: 60699336
Conc: 54.28 ng/ml

Instrument :
ECD_P
ClientSampleId :
AR1660CCC500



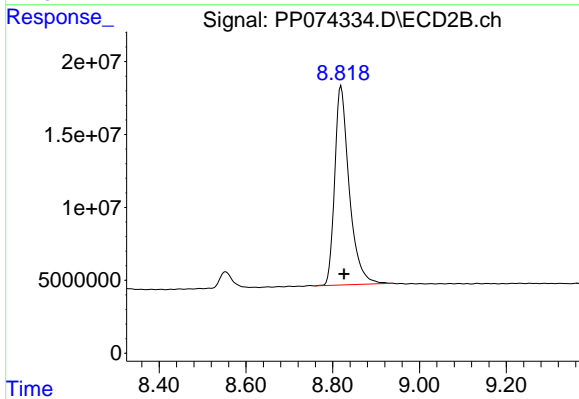
#1 Tetrachloro-m-xylene

R.T.: 3.801 min
Delta R.T.: -0.005 min
Response: 228848491
Conc: 59.68 ng/ml



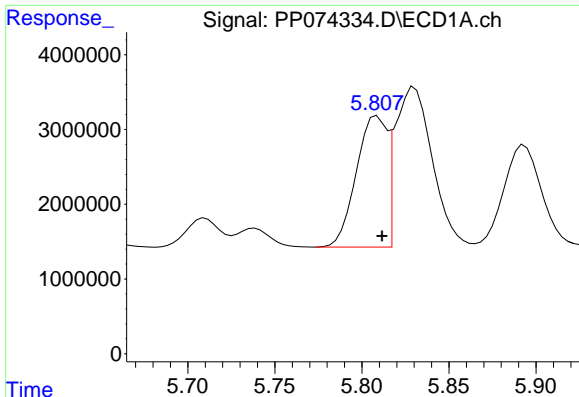
#2 Decachlorobiphenyl

R.T.: 10.436 min
Delta R.T.: -0.002 min
Response: 47494711
Conc: 48.91 ng/ml



#2 Decachlorobiphenyl

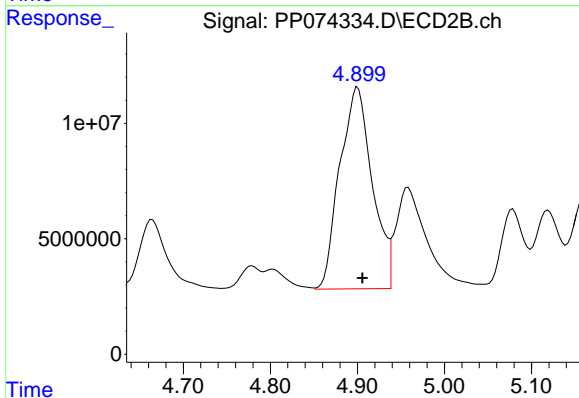
R.T.: 8.819 min
Delta R.T.: -0.007 min
Response: 317403824
Conc: 52.78 ng/ml



#3 AR-1016-1

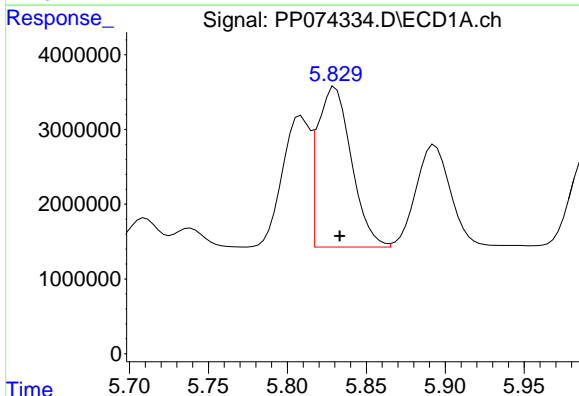
R.T.: 5.809 min
 Delta R.T.: -0.003 min
 Response: 21431398
 Conc: 519.46 ng/ml

Instrument :
 ECD_P
 ClientSampleId :
 AR1660CCC500



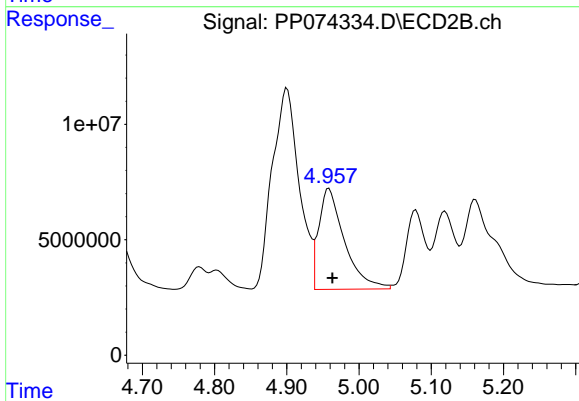
#3 AR-1016-1

R.T.: 4.900 min
 Delta R.T.: -0.005 min
 Response: 226531618
 Conc: 567.91 ng/ml



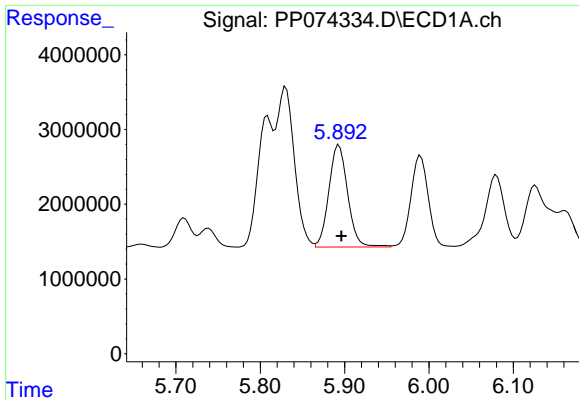
#4 AR-1016-2

R.T.: 5.830 min
 Delta R.T.: -0.003 min
 Response: 31817130
 Conc: 523.81 ng/ml



#4 AR-1016-2

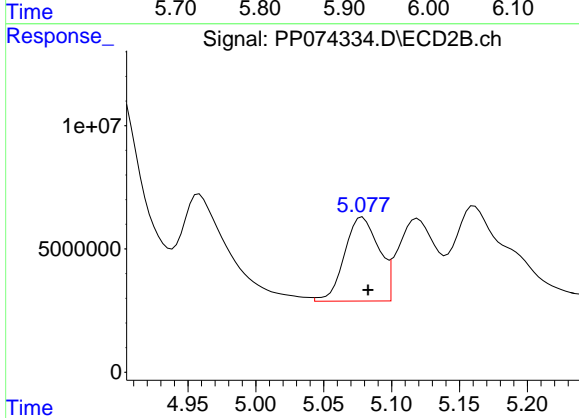
R.T.: 4.958 min
 Delta R.T.: -0.005 min
 Response: 108414514
 Conc: 577.26 ng/ml



#5 AR-1016-3

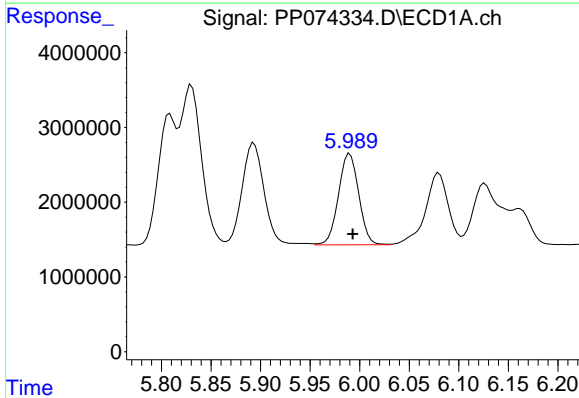
R.T.: 5.893 min
 Delta R.T.: -0.003 min
 Response: 21118183
 Conc: 532.47 ng/ml

Instrument :
 ECD_P
 ClientSampleId :
 AR1660CCC500



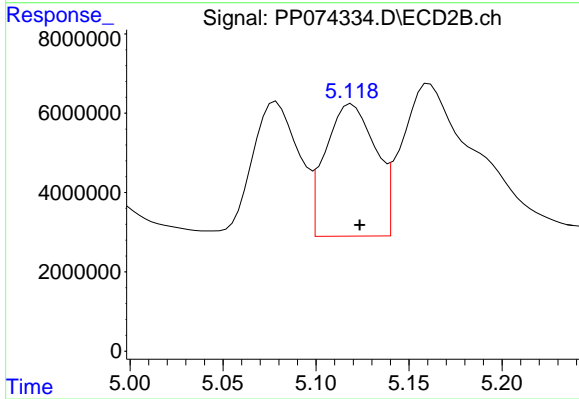
#5 AR-1016-3

R.T.: 5.079 min
 Delta R.T.: -0.004 min
 Response: 59799212
 Conc: 563.77 ng/ml



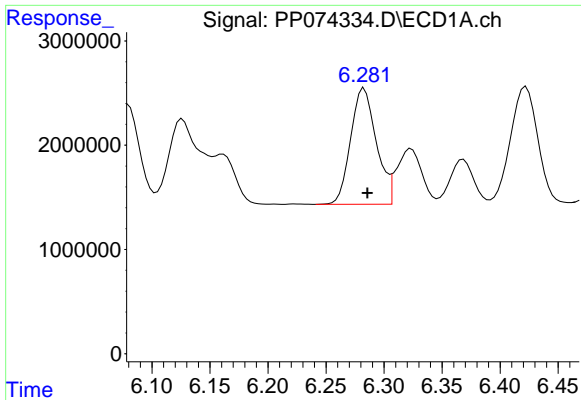
#6 AR-1016-4

R.T.: 5.990 min
 Delta R.T.: -0.003 min
 Response: 17405958
 Conc: 534.84 ng/ml



#6 AR-1016-4

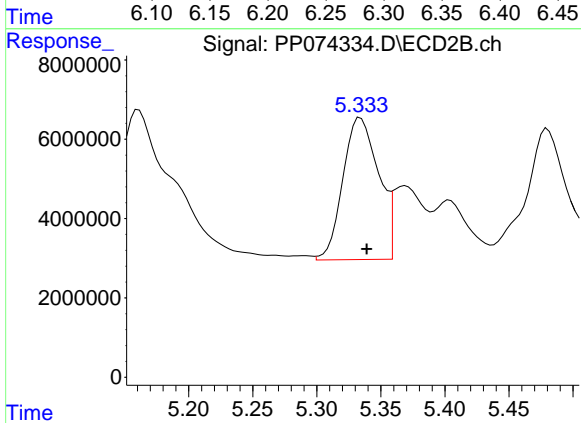
R.T.: 5.119 min
 Delta R.T.: -0.004 min
 Response: 62295116
 Conc: 570.36 ng/ml



#7 AR-1016-5

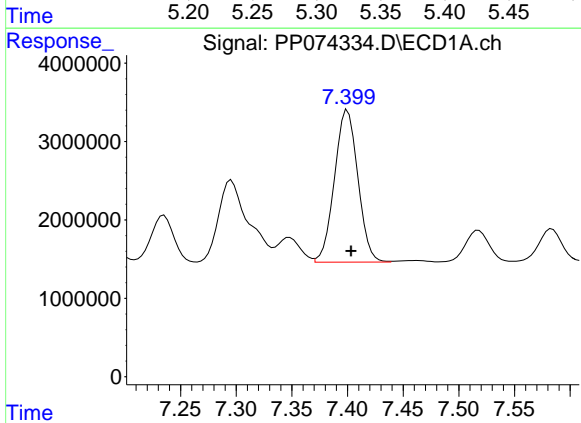
R.T.: 6.283 min
 Delta R.T.: -0.003 min
 Response: 17110565
 Conc: 527.00 ng/ml

Instrument :
 ECD_P
 ClientSampleId :
 AR1660CCC500



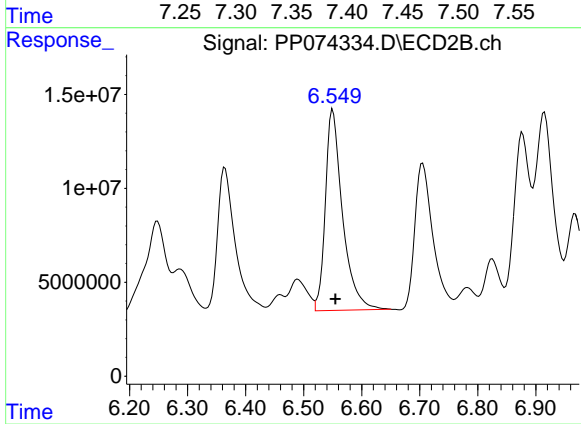
#7 AR-1016-5

R.T.: 5.334 min
 Delta R.T.: -0.005 min
 Response: 69184133
 Conc: 591.50 ng/ml



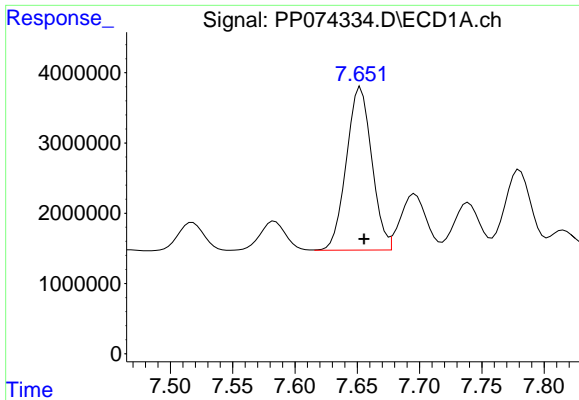
#31 AR-1260-1

R.T.: 7.400 min
 Delta R.T.: -0.003 min
 Response: 28408257
 Conc: 504.09 ng/ml



#31 AR-1260-1

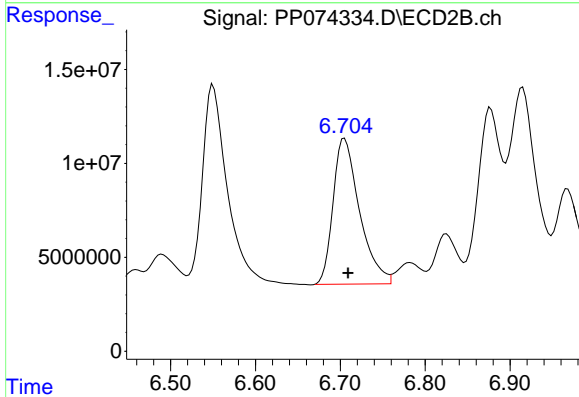
R.T.: 6.550 min
 Delta R.T.: -0.005 min
 Response: 220415978
 Conc: 545.64 ng/ml



#32 AR-1260-2

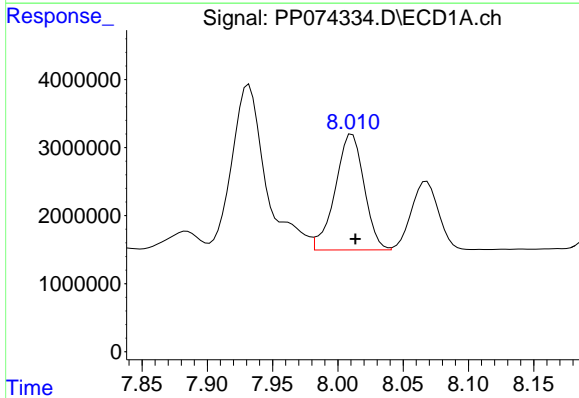
R.T.: 7.653 min
 Delta R.T.: -0.003 min
 Response: 33046210
 Conc: 484.89 ng/ml

Instrument :
 ECD_P
 ClientSampleId :
 AR1660CCC500



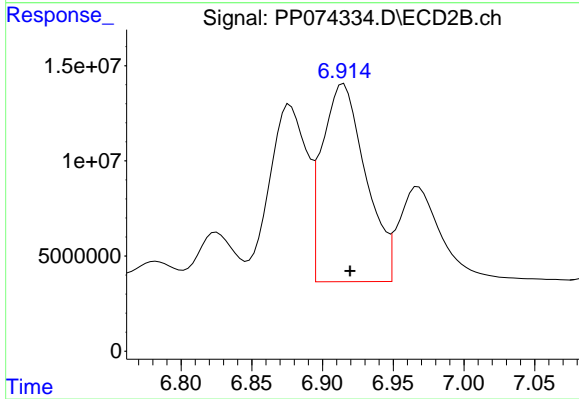
#32 AR-1260-2

R.T.: 6.705 min
 Delta R.T.: -0.004 min
 Response: 168260876
 Conc: 538.09 ng/ml



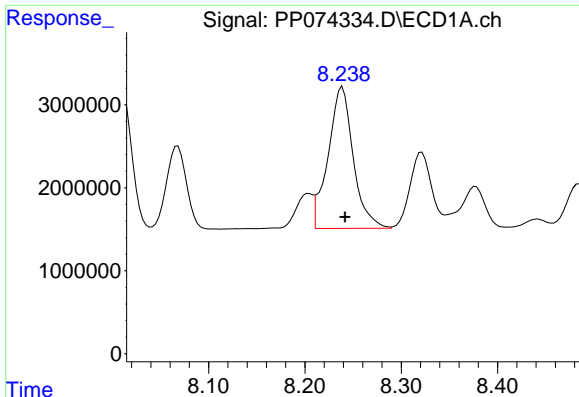
#33 AR-1260-3

R.T.: 8.011 min
 Delta R.T.: -0.002 min
 Response: 26246958
 Conc: 492.48 ng/ml



#33 AR-1260-3

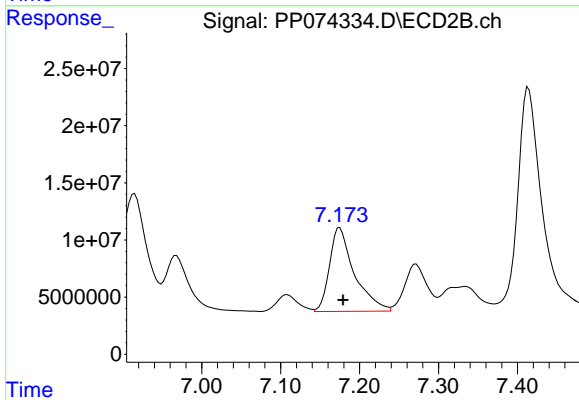
R.T.: 6.915 min
 Delta R.T.: -0.004 min
 Response: 222571251
 Conc: 564.73 ng/ml



#34 AR-1260-4

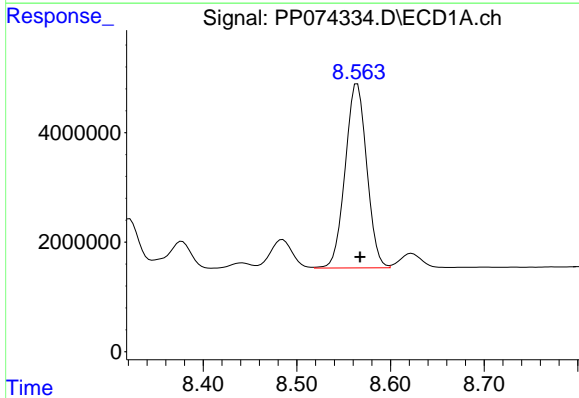
R.T.: 8.239 min
 Delta R.T.: -0.003 min
 Response: 30941970
 Conc: 494.16 ng/ml

Instrument :
 ECD_P
 ClientSampleId :
 AR1660CCC500



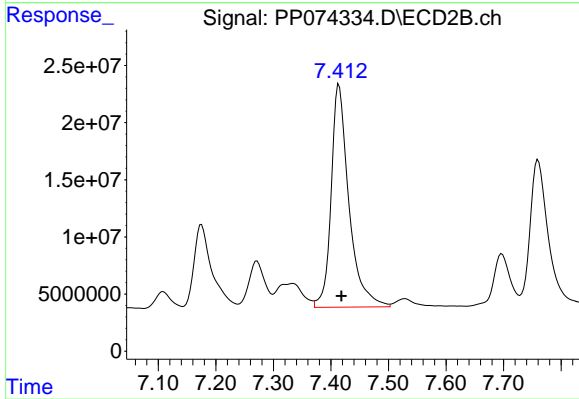
#34 AR-1260-4

R.T.: 7.175 min
 Delta R.T.: -0.004 min
 Response: 159839444
 Conc: 549.32 ng/ml



#35 AR-1260-5

R.T.: 8.565 min
 Delta R.T.: -0.003 min
 Response: 53781862
 Conc: 474.66 ng/ml



#35 AR-1260-5

R.T.: 7.414 min
 Delta R.T.: -0.004 min
 Response: 418750478
 Conc: 552.87 ng/ml