

Data Path : Z:\pestpcbsrv\HPCHEM1\ECD_P\Data\PP081325\
 Data File : PP074335.D
 Signal(s) : Signal #1: ECD1A.ch Signal #2: ECD2B.ch
 Acq On : 13 Aug 2025 09:35
 Operator : YP\AJ
 Sample : AR1242CCC500
 Misc :
 ALS Vial : 4 Sample Multiplier: 1

Instrument :
 ECD_P
ClientSampleId :
 AR1242CCC500

Manual Integrations
APPROVED
 Reviewed By :Yogesh Patel 08/14/2025
 Supervised By :mohammad ahmed 08/18/2025

Integration File signal 1: autoint1.e
 Integration File signal 2: autoint2.e
 Quant Time: Aug 13 11:45:37 2025
 Quant Method : Z:\pestpcbsrv\HPCHEM1\ECD_P\methods\PP080125.M
 Quant Title : GC EXTRACTABLES
 QLast Update : Mon Aug 04 11:01:49 2025
 Response via : Initial Calibration
 Integrator: ChemStation

Volume Inj. : 2 µl
 Signal #1 Phase : ZB-MR1 Signal #2 Phase: ZB-MR2
 Signal #1 Info : 30Mx0.32mmx 0.50µ Signal #2 Info : 30M x 0.32mm x 0.25µm

Compound	RT#1	RT#2	Resp#1	Resp#2	ng/ml	ng/ml

System Monitoring Compounds						
1) SA Tetrachlo...	4.662	3.796	64099768	240.8E6	57.319	62.802m
2) SA Decachlor...	10.447	8.819	50602023	336.1E6	52.105	55.886
Target Compounds						
16) L4 AR-1242-1	5.815	4.899	19734401	208.2E6	529.558	603.311
17) L4 AR-1242-2	5.837	4.956	28745275	94394258	528.319	577.767m
18) L4 AR-1242-3	5.900	5.075	18751960	50813767	524.738	550.836m
19) L4 AR-1242-4	5.997	5.159	15420889	69017758	527.776	577.934m
20) L4 AR-1242-5	6.727	5.680	17353560	84855287	488.035	567.366m

(f)=RT Delta > 1/2 Window (#)=Amounts differ by > 25% (m)=manual int.

Data Path : Z:\pestpcbsrv\HPCHEM1\ECD_P\Data\PP081325\
 Data File : PP074335.D
 Signal(s) : Signal #1: ECD1A.ch Signal #2: ECD2B.ch
 Acq On : 13 Aug 2025 09:35
 Operator : YP\AJ
 Sample : AR1242CCC500
 Misc :
 ALS Vial : 4 Sample Multiplier: 1

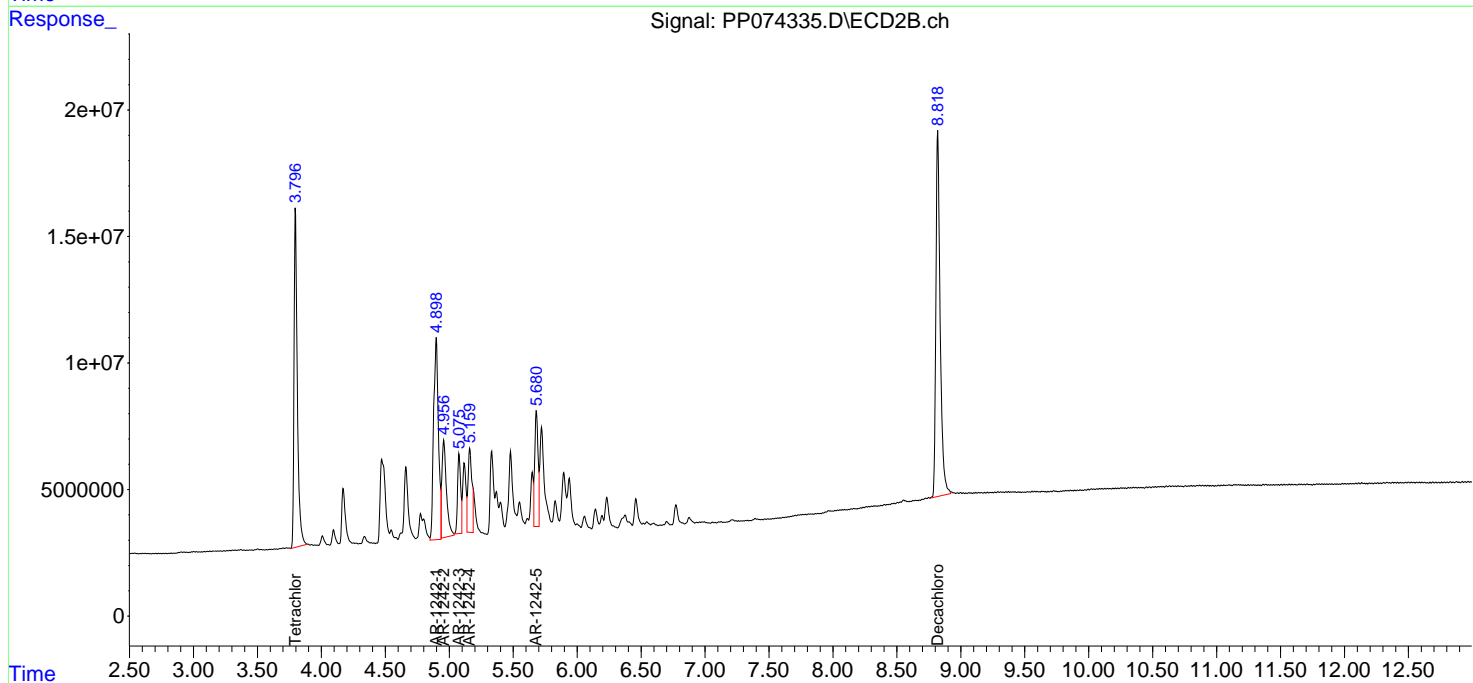
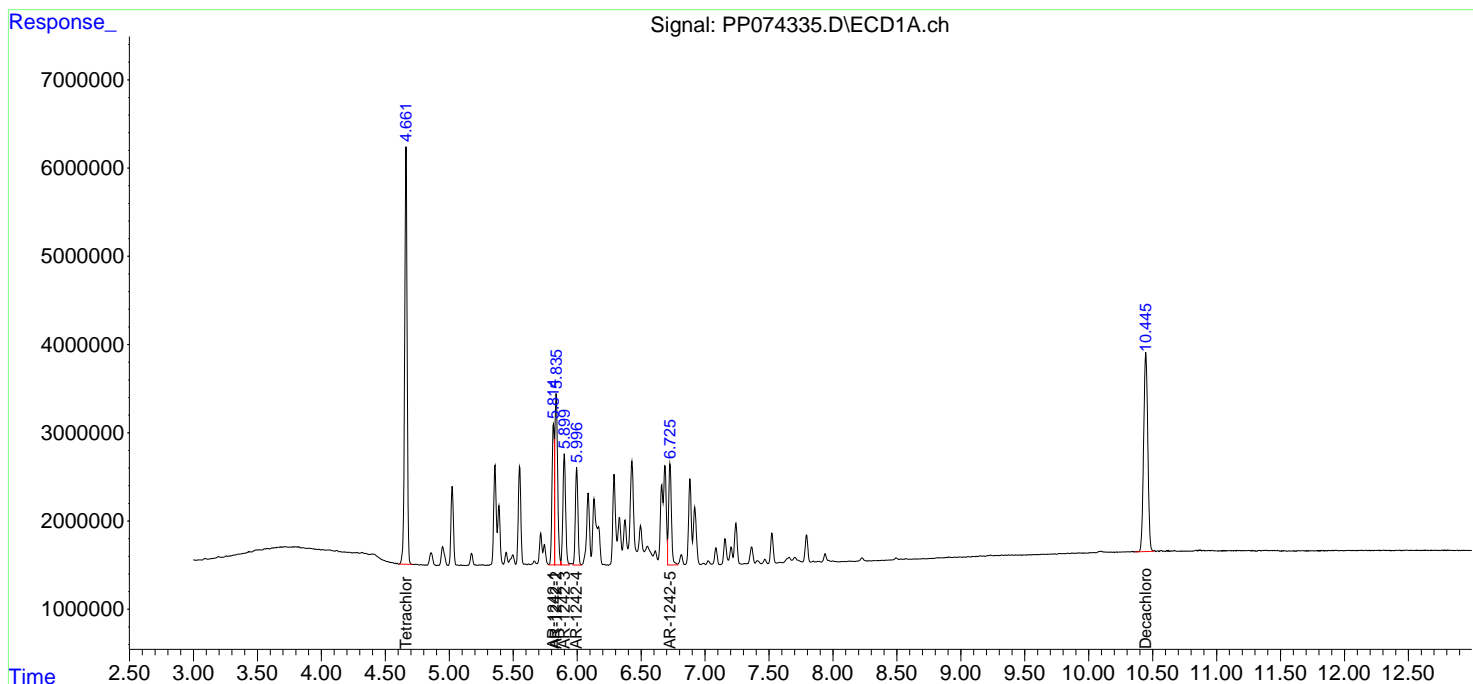
Instrument :
 ECD_P
 ClientSampleId :
 AR1242CCC500

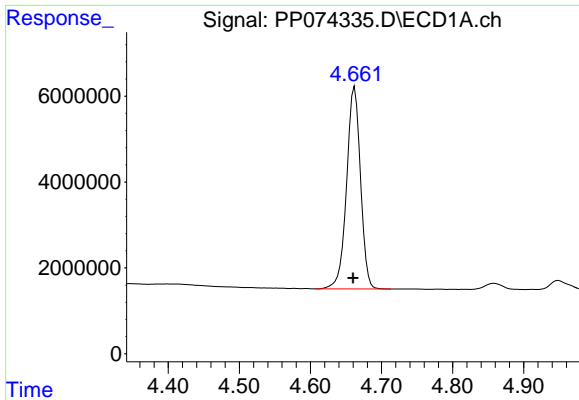
Manual Integrations
 APPROVED

Reviewed By :Yogesh Patel 08/14/2025
 Supervised By :mohammad ahmed 08/18/2025

Integration File signal 1: autoint1.e
 Integration File signal 2: autoint2.e
 Quant Time: Aug 13 11:45:37 2025
 Quant Method : Z:\pestpcbsrv\HPCHEM1\ECD_P\methods\PP080125.M
 Quant Title : GC EXTRACTABLES
 QLast Update : Mon Aug 04 11:01:49 2025
 Response via : Initial Calibration
 Integrator: ChemStation

Volume Inj. : 2 µl
 Signal #1 Phase : ZB-MR1 Signal #2 Phase: ZB-MR2
 Signal #1 Info : 30Mx0.32mmx 0.50µ Signal #2 Info : 30M x 0.32mm x 0.25µm

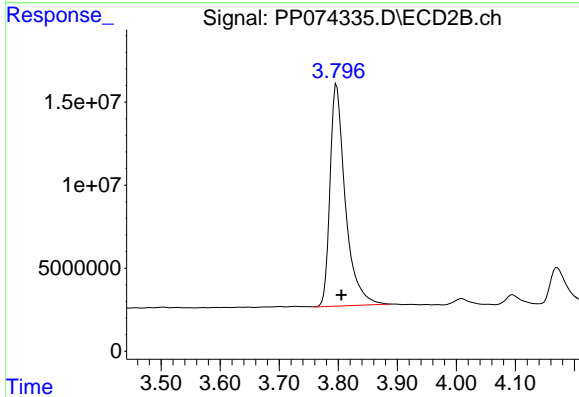




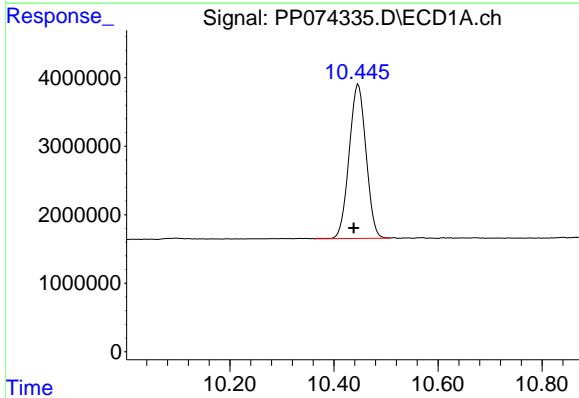
#1 Tetrachloro-m-xylene
 R.T.: 4.662 min
 Delta R.T.: 0.002 min
 Response: 64099768
 Conc: 57.32 ng/ml

Instrument : ECD_P
 ClientSampleId : AR1242CCC500

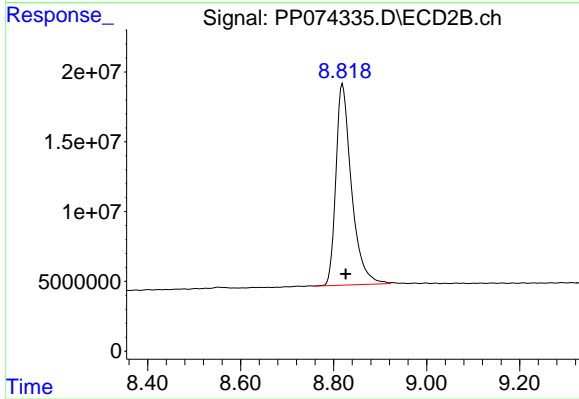
Manual Integrations
APPROVED
 Reviewed By :Yogesh Patel 08/14/2025
 Supervised By :mohammad ahmed 08/18/2025



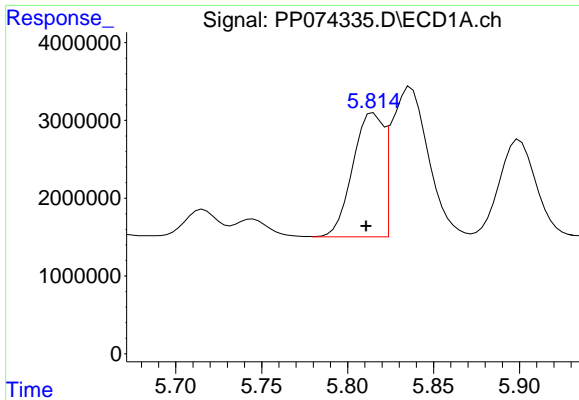
#1 Tetrachloro-m-xylene
 R.T.: 3.796 min
 Delta R.T.: -0.010 min
 Response: 240808099
 Conc: 62.80 ng/ml m



#2 Decachlorobiphenyl
 R.T.: 10.447 min
 Delta R.T.: 0.009 min
 Response: 50602023
 Conc: 52.10 ng/ml



#2 Decachlorobiphenyl
 R.T.: 8.819 min
 Delta R.T.: -0.007 min
 Response: 336076607
 Conc: 55.89 ng/ml



#16 AR-1242-1

R.T.: 5.815 min
 Delta R.T.: 0.004 min
 Response: 19734401
 Conc: 529.56 ng/ml

Instrument :

ECD_P

ClientSampleId :

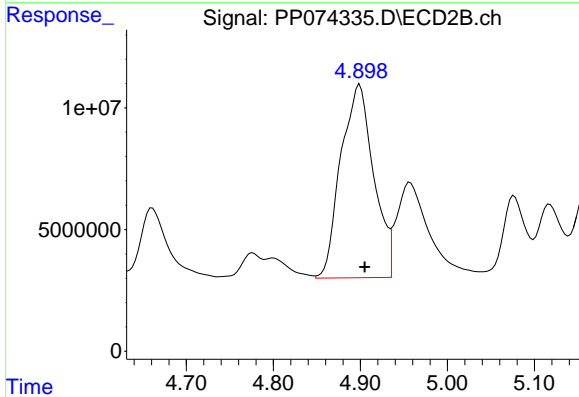
AR1242CCC500

Manual Integrations

APPROVED

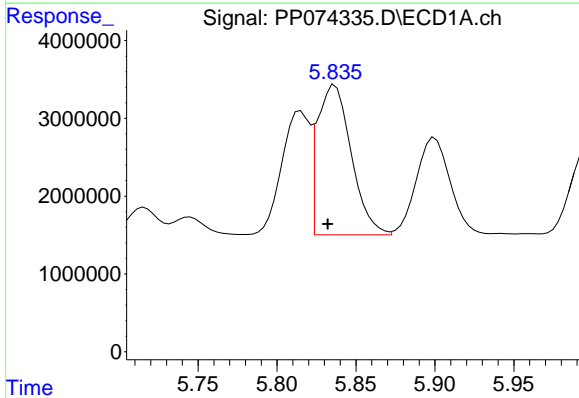
Reviewed By :Yogesh Patel 08/14/2025

Supervised By :mohammad ahmed 08/18/2025



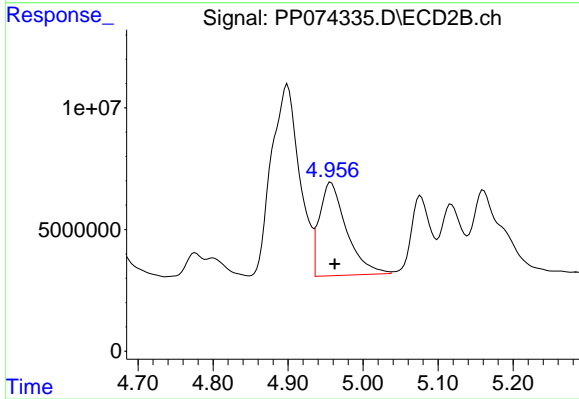
#16 AR-1242-1

R.T.: 4.899 min
 Delta R.T.: -0.006 min
 Response: 208227088
 Conc: 603.31 ng/ml



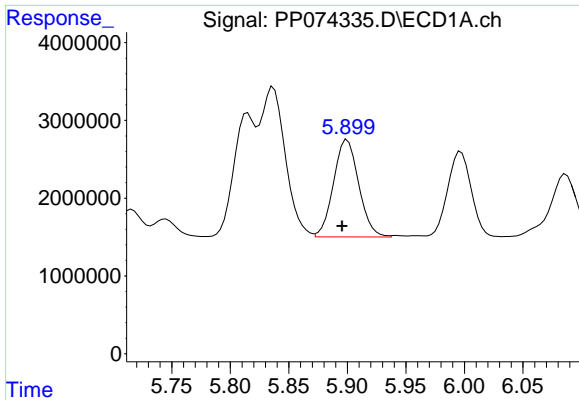
#17 AR-1242-2

R.T.: 5.837 min
 Delta R.T.: 0.005 min
 Response: 28745275
 Conc: 528.32 ng/ml



#17 AR-1242-2

R.T.: 4.956 min
 Delta R.T.: -0.006 min
 Response: 94394258
 Conc: 577.77 ng/ml m



#18 AR-1242-3

R.T.: 5.900 min
 Delta R.T.: 0.004 min
 Response: 18751960
 Conc: 524.74 ng/ml

Instrument :

ECD_P

ClientSampleId :

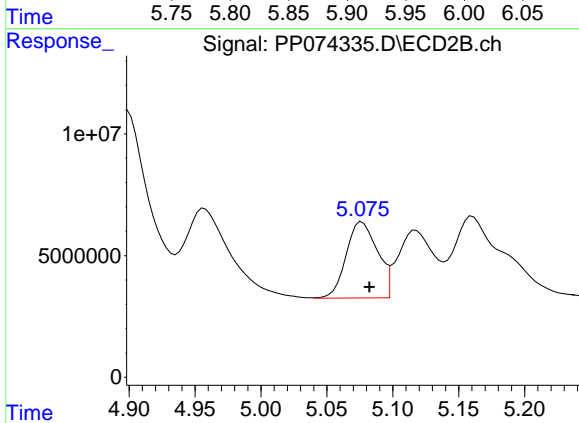
AR1242CCC500

Manual Integrations

APPROVED

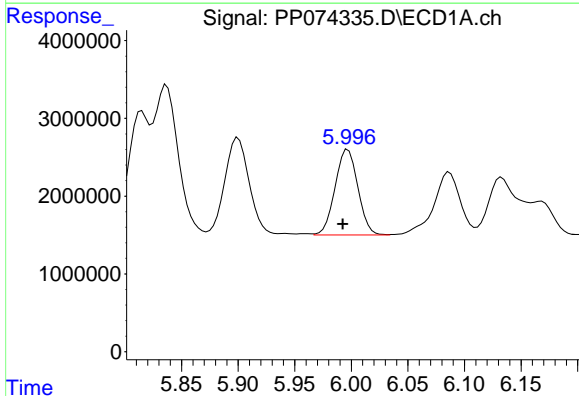
Reviewed By :Yogesh Patel 08/14/2025

Supervised By :mohammad ahmed 08/18/2025



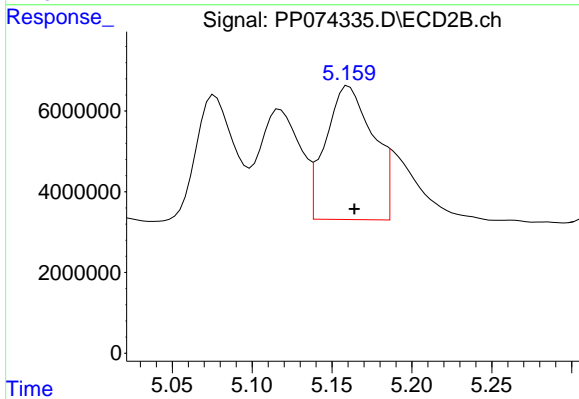
#18 AR-1242-3

R.T.: 5.075 min
 Delta R.T.: -0.007 min
 Response: 50813767
 Conc: 550.84 ng/ml m



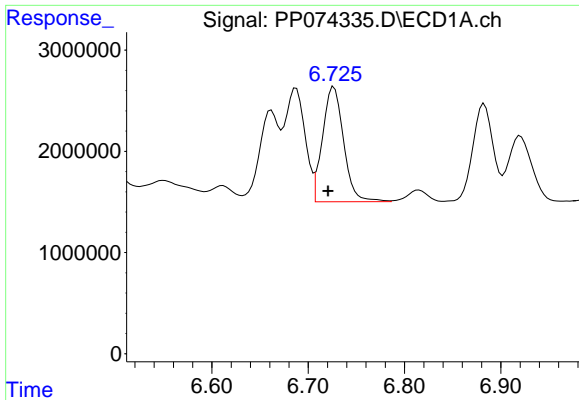
#19 AR-1242-4

R.T.: 5.997 min
 Delta R.T.: 0.005 min
 Response: 15420889
 Conc: 527.78 ng/ml



#19 AR-1242-4

R.T.: 5.159 min
 Delta R.T.: -0.005 min
 Response: 69017758
 Conc: 577.93 ng/ml m



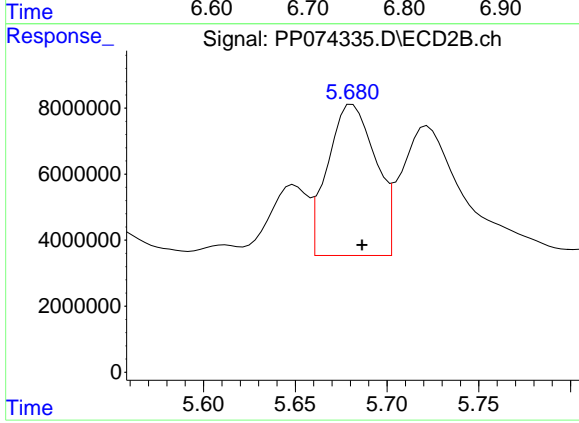
#20 AR-1242-5

R.T.: 6.727 min
 Delta R.T.: 0.006 min
 Response: 17353560
 Conc: 488.04 ng/ml

Instrument :
 ECD_P
 ClientSampleId :
 AR1242CCC500

Manual Integrations
 APPROVED

Reviewed By :Yogesh Patel 08/14/2025
 Supervised By :mohammad ahmed 08/18/2025



#20 AR-1242-5

R.T.: 5.680 min
 Delta R.T.: -0.007 min
 Response: 84855287
 Conc: 567.37 ng/ml m