

Data Path : Z:\pestpcbsrv\HPCHEM1\ECD\_P\Data\PP081325\  
 Data File : PP074340.D  
 Signal(s) : Signal #1: ECD1A.ch Signal #2: ECD2B.ch  
 Acq On : 13 Aug 2025 12:55  
 Operator : YP\AJ  
 Sample : PB169227BS  
 Misc :  
 ALS Vial : 8 Sample Multiplier: 1

**Instrument :**  
 ECD\_P  
**ClientSampleId :**  
 PB169227BS

**Manual Integrations**  
**APPROVED**  
 Reviewed By :Yogesh Patel 08/14/2025  
 Supervised By :mohammad ahmed 08/18/2025

Integration File signal 1: autoint1.e  
 Integration File signal 2: autoint2.e  
 Quant Time: Aug 13 15:40:24 2025  
 Quant Method : Z:\pestpcbsrv\HPCHEM1\ECD\_P\methods\PP080125.M  
 Quant Title : GC EXTRACTABLES  
 QLast Update : Mon Aug 04 11:01:49 2025  
 Response via : Initial Calibration  
 Integrator: ChemStation

Volume Inj. : 2 µl  
 Signal #1 Phase : ZB-MR1 Signal #2 Phase: ZB-MR2  
 Signal #1 Info : 30Mx0.32mmx 0.50µ Signal #2 Info : 30M x 0.32mm x 0.25µm

Compound	RT#1	RT#2	Resp#1	Resp#2	ng/ml	ng/ml
-----						
System Monitoring Compounds						
1) SA Tetrachlo...	4.661	3.804	28352685	87432459	25.353	22.802
2) SA Decachlor...	10.442	8.823	22930914	131.2E6	23.612	21.822
Target Compounds						
3) L1 AR-1016-1	5.813	4.904	23924041	236.9E6	579.881	593.980
4) L1 AR-1016-2	5.834	4.962	35302593	109.4E6	581.192	582.355
5) L1 AR-1016-3	5.898	5.081	23152195	62749044	583.759	591.583
6) L1 AR-1016-4	5.995	5.122	19044781	62848392	585.192	575.429
7) L1 AR-1016-5	6.287	5.336	18310597	68747144	563.957	587.767
31) L7 AR-1260-1	7.405	6.554	32200623	241.9E6	571.378	598.800
32) L7 AR-1260-2	7.658	6.708	37222394	190.9E6	546.164	610.604
33) L7 AR-1260-3	8.016	6.918	25253920	211.8E6	473.843	537.418
34) L7 AR-1260-4	8.243	7.178	33208454	159.2E6	530.360m	547.072
35) L7 AR-1260-5	8.570	7.418	53626648	411.3E6	473.295	543.079

(f)=RT Delta > 1/2 Window (#)=Amounts differ by > 25% (m)=manual int.

Data Path : Z:\pestpcbsrv\HPCHEM1\ECD\_P\Data\PP081325\  
 Data File : PP074340.D  
 Signal(s) : Signal #1: ECD1A.ch Signal #2: ECD2B.ch  
 Acq On : 13 Aug 2025 12:55  
 Operator : YP\AJ  
 Sample : PB169227BS  
 Misc :  
 ALS Vial : 8 Sample Multiplier: 1

**Instrument :**

ECD\_P

**ClientSampleId :**

PB169227BS

**Manual Integrations**

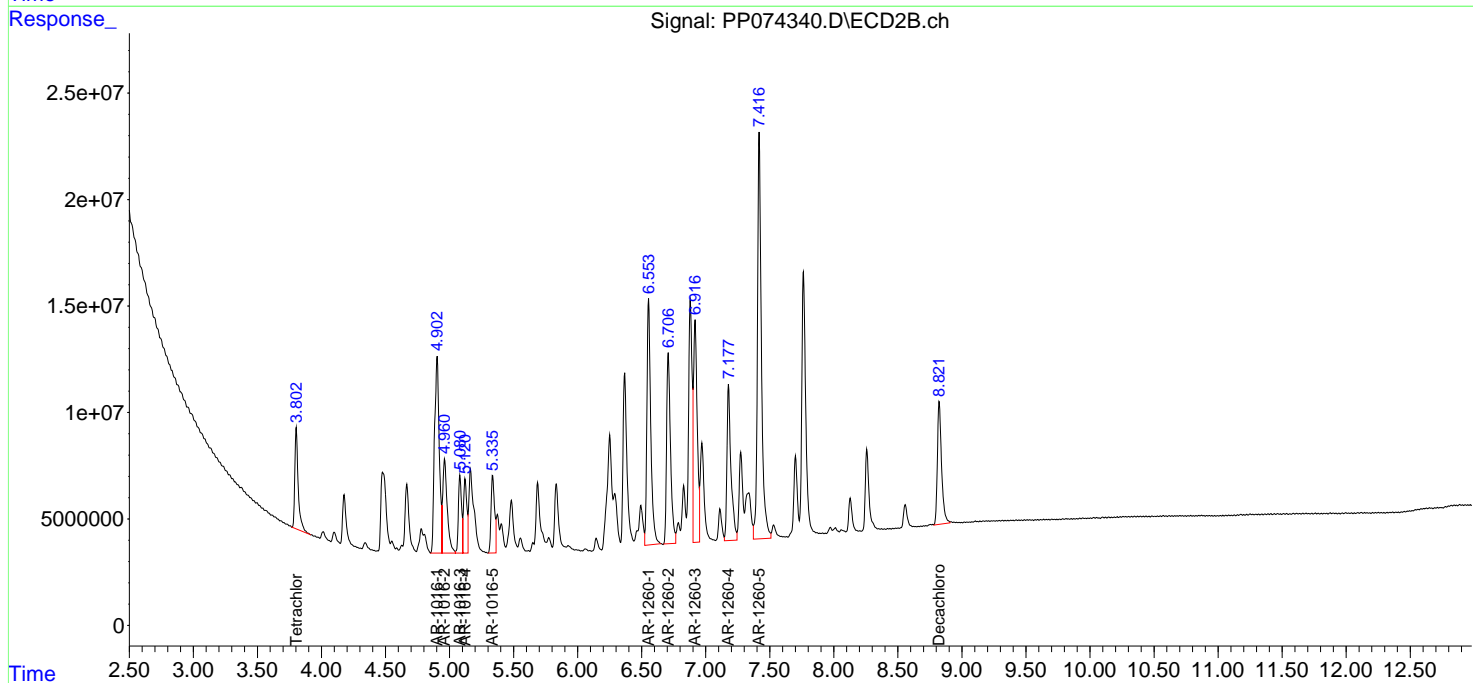
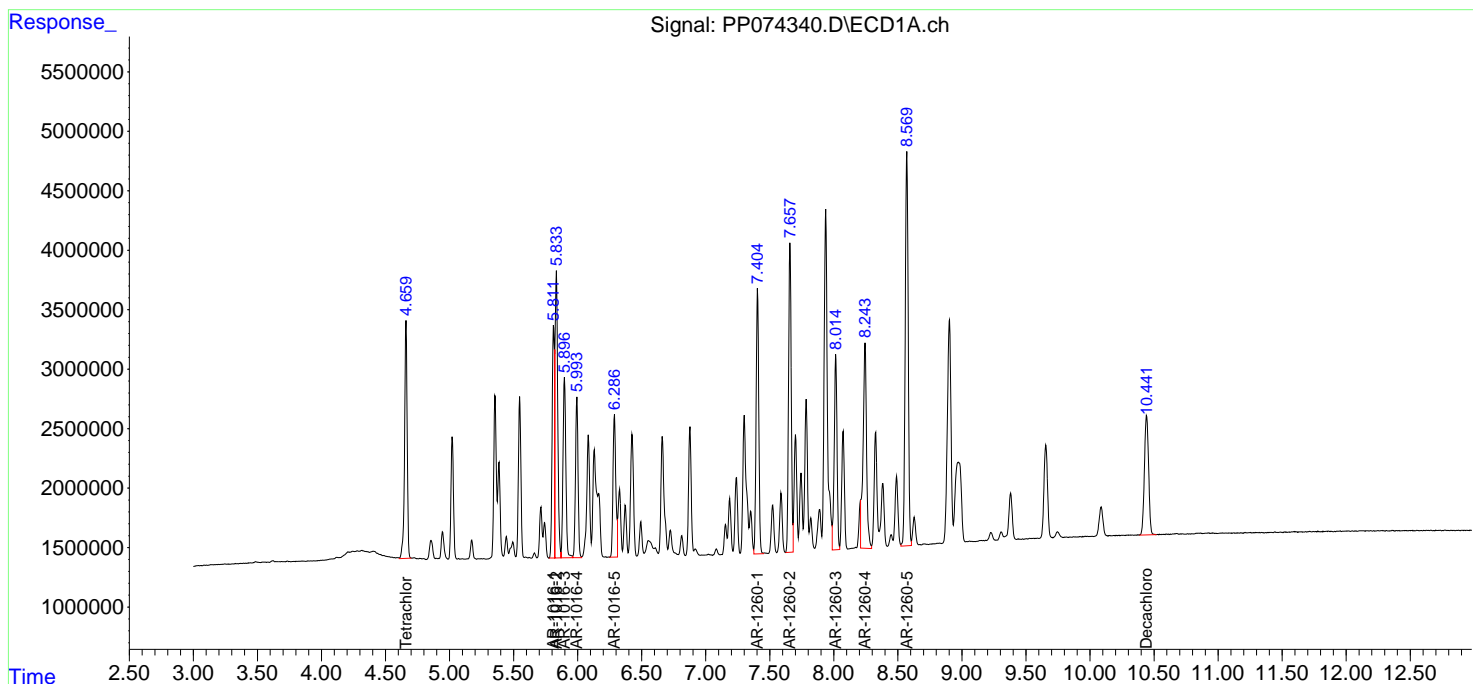
**APPROVED**

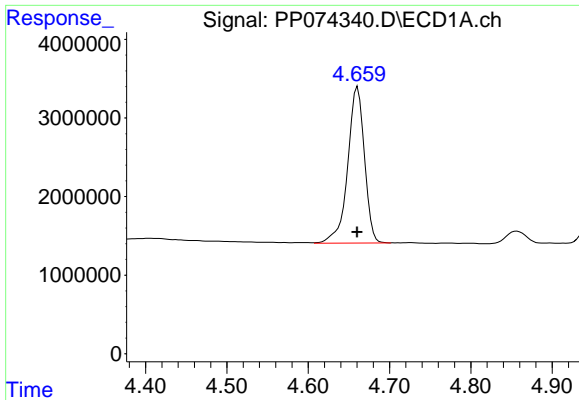
Reviewed By :Yogesh Patel 08/14/2025

Supervised By :mohammad ahmed 08/18/2025

Integration File signal 1: autoint1.e  
 Integration File signal 2: autoint2.e  
 Quant Time: Aug 13 15:40:24 2025  
 Quant Method : Z:\pestpcbsrv\HPCHEM1\ECD\_P\methods\PP080125.M  
 Quant Title : GC EXTRACTABLES  
 QLast Update : Mon Aug 04 11:01:49 2025  
 Response via : Initial Calibration  
 Integrator: ChemStation

Volume Inj. : 2 µl  
 Signal #1 Phase : ZB-MR1 Signal #2 Phase: ZB-MR2  
 Signal #1 Info : 30Mx0.32mmx 0.50µ Signal #2 Info : 30M x 0.32mm x 0.25µm

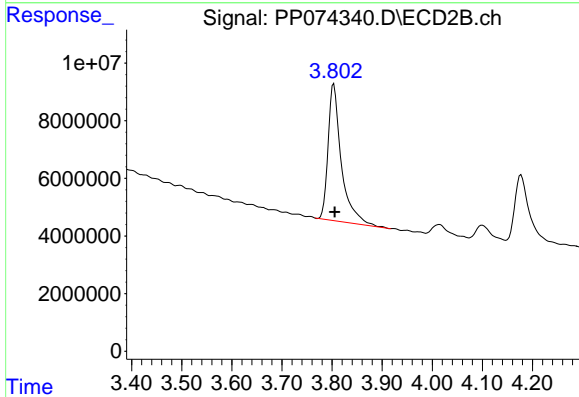




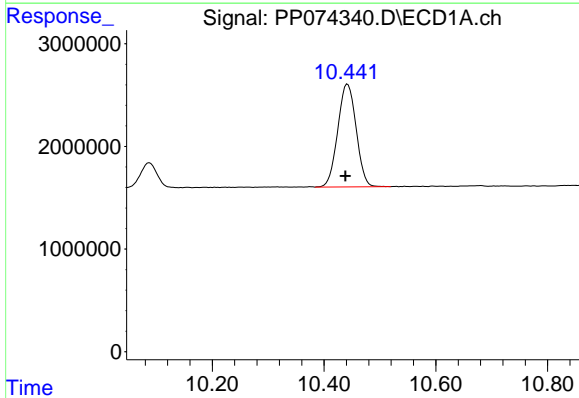
#1 Tetrachloro-m-xylene  
 R.T.: 4.661 min  
 Delta R.T.: 0.000 min  
 Response: 28352685  
 Conc: 25.35 ng/ml

Instrument : ECD\_P  
 ClientSampleId : PB169227BS

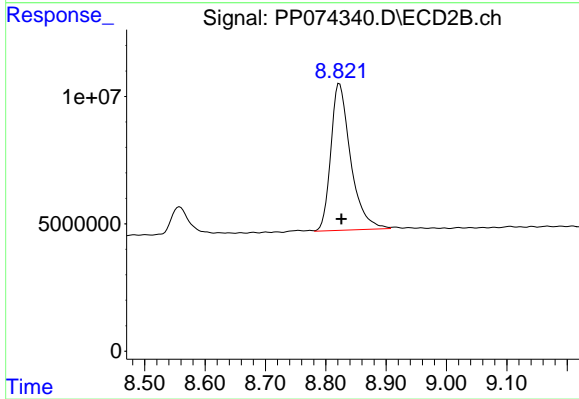
Manual Integrations  
**APPROVED**  
 Reviewed By :Yogesh Patel 08/14/2025  
 Supervised By :mohammad ahmed 08/18/2025



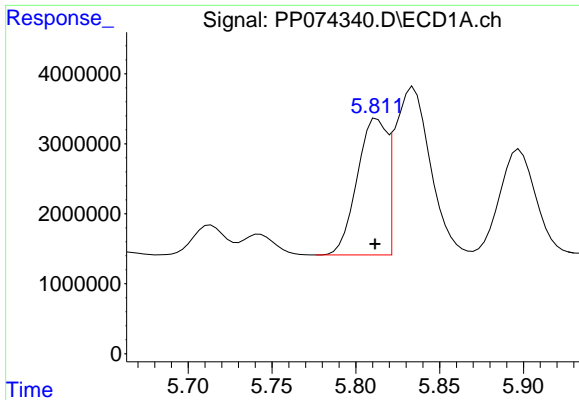
#1 Tetrachloro-m-xylene  
 R.T.: 3.804 min  
 Delta R.T.: -0.002 min  
 Response: 87432459  
 Conc: 22.80 ng/ml



#2 Decachlorobiphenyl  
 R.T.: 10.442 min  
 Delta R.T.: 0.004 min  
 Response: 22930914  
 Conc: 23.61 ng/ml



#2 Decachlorobiphenyl  
 R.T.: 8.823 min  
 Delta R.T.: -0.003 min  
 Response: 131227547  
 Conc: 21.82 ng/ml



#3 AR-1016-1

R.T.: 5.813 min  
 Delta R.T.: 0.001 min  
 Response: 23924041  
 Conc: 579.88 ng/ml

Instrument :

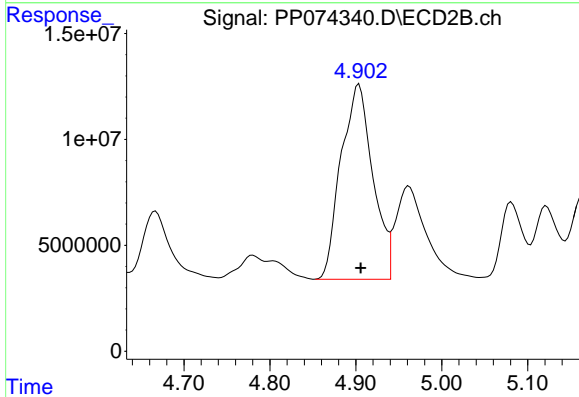
ECD\_P

Client Sample Id :

PB169227BS

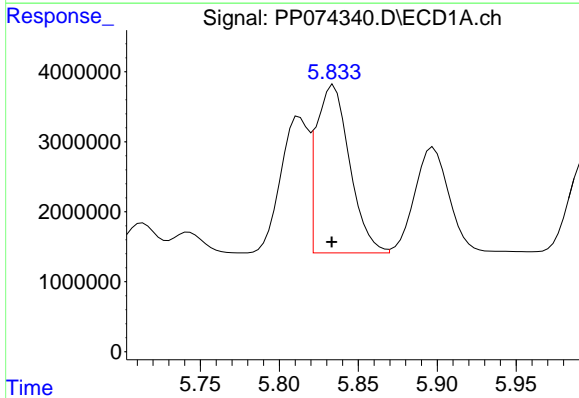
Manual Integrations  
**APPROVED**

Reviewed By :Yogesh Patel 08/14/2025  
 Supervised By :mohammad ahmed 08/18/2025



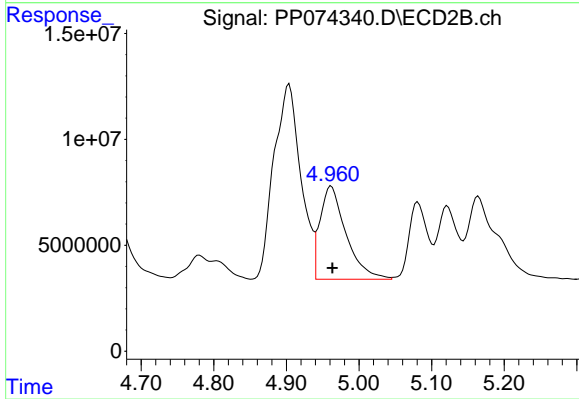
#3 AR-1016-1

R.T.: 4.904 min  
 Delta R.T.: -0.002 min  
 Response: 236931050  
 Conc: 593.98 ng/ml



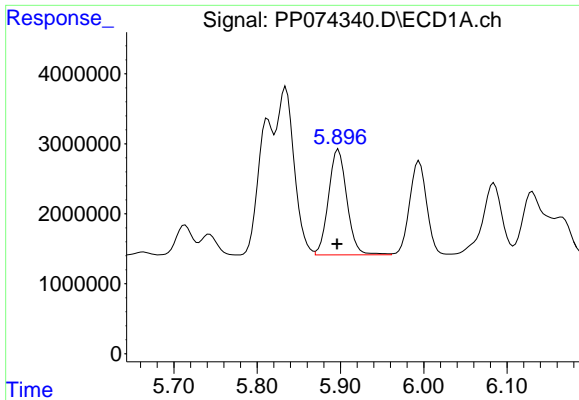
#4 AR-1016-2

R.T.: 5.834 min  
 Delta R.T.: 0.001 min  
 Response: 35302593  
 Conc: 581.19 ng/ml



#4 AR-1016-2

R.T.: 4.962 min  
 Delta R.T.: -0.001 min  
 Response: 109371589  
 Conc: 582.36 ng/ml



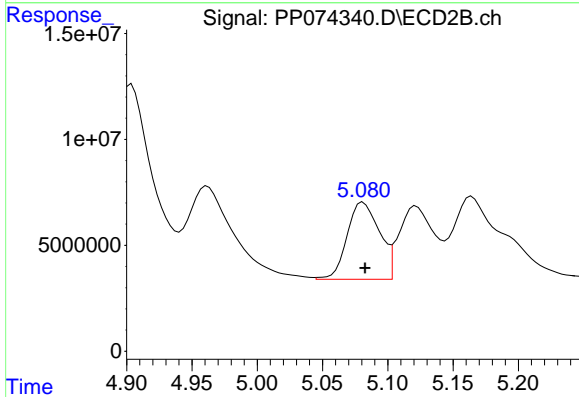
#5 AR-1016-3

R.T.: 5.898 min  
 Delta R.T.: 0.001 min  
 Response: 23152195  
 Conc: 583.76 ng/ml

Instrument :  
 ECD\_P  
 ClientSampleId :  
 PB169227BS

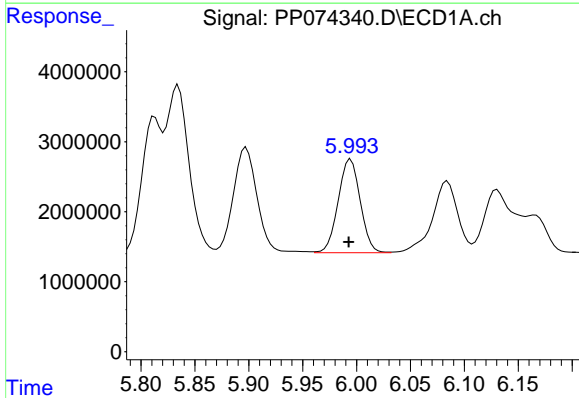
Manual Integrations  
 APPROVED

Reviewed By :Yogesh Patel 08/14/2025  
 Supervised By :mohammad ahmed 08/18/2025



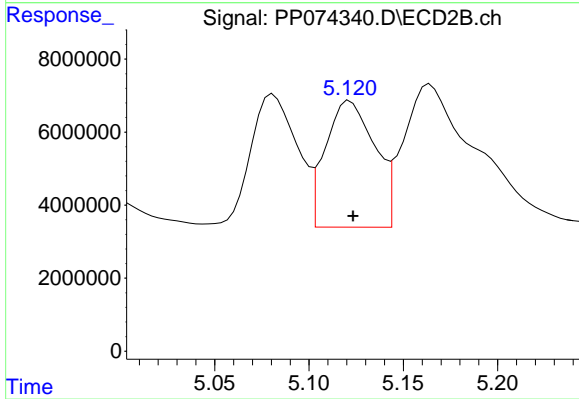
#5 AR-1016-3

R.T.: 5.081 min  
 Delta R.T.: -0.002 min  
 Response: 62749044  
 Conc: 591.58 ng/ml



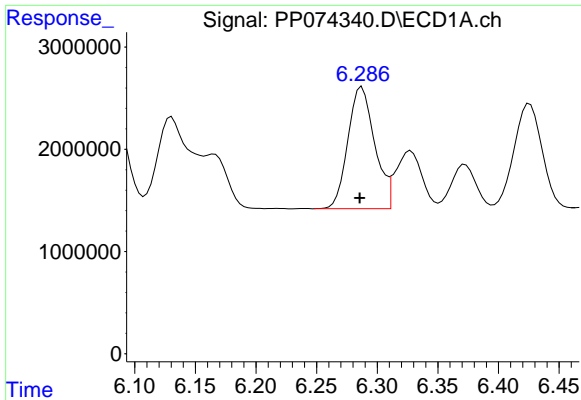
#6 AR-1016-4

R.T.: 5.995 min  
 Delta R.T.: 0.002 min  
 Response: 19044781  
 Conc: 585.19 ng/ml



#6 AR-1016-4

R.T.: 5.122 min  
 Delta R.T.: -0.002 min  
 Response: 62848392  
 Conc: 575.43 ng/ml



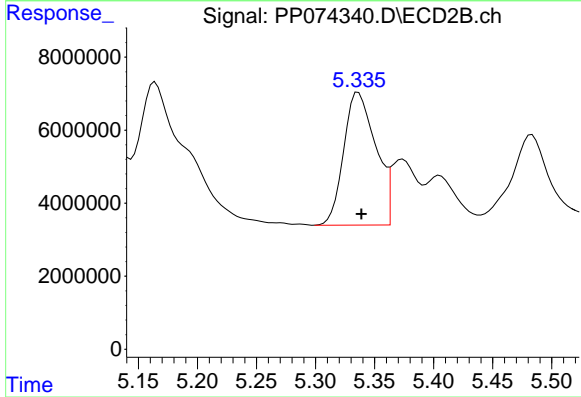
#7 AR-1016-5

R.T.: 6.287 min  
 Delta R.T.: 0.002 min  
 Response: 18310597  
 Conc: 563.96 ng/ml

Instrument :  
 ECD\_P  
 ClientSampleId :  
 PB169227BS

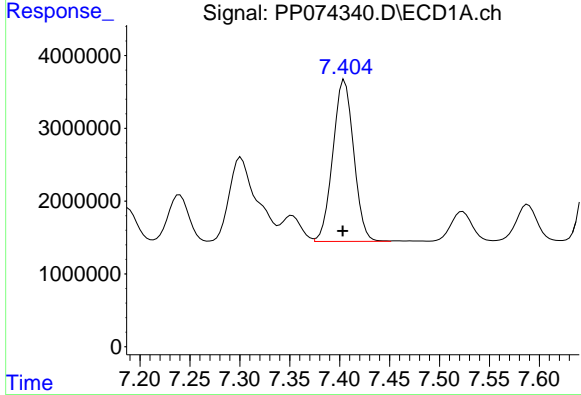
Manual Integrations  
 APPROVED

Reviewed By :Yogesh Patel 08/14/2025  
 Supervised By :mohammad ahmed 08/18/2025



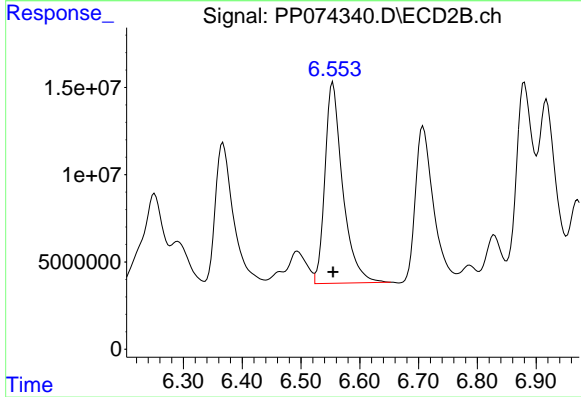
#7 AR-1016-5

R.T.: 5.336 min  
 Delta R.T.: -0.003 min  
 Response: 68747144  
 Conc: 587.77 ng/ml



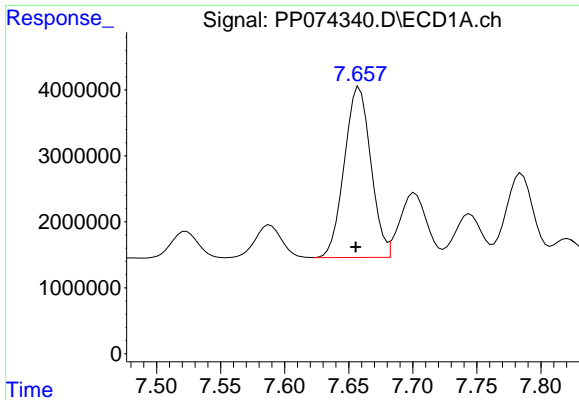
#31 AR-1260-1

R.T.: 7.405 min  
 Delta R.T.: 0.002 min  
 Response: 32200623  
 Conc: 571.38 ng/ml



#31 AR-1260-1

R.T.: 6.554 min  
 Delta R.T.: 0.000 min  
 Response: 241889459  
 Conc: 598.80 ng/ml



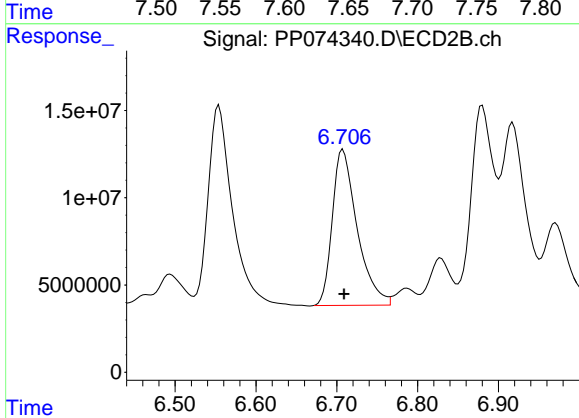
#32 AR-1260-2

R.T.: 7.658 min  
 Delta R.T.: 0.003 min  
 Response: 37222394  
 Conc: 546.16 ng/ml

Instrument :  
 ECD\_P  
 ClientSampleId :  
 PB169227BS

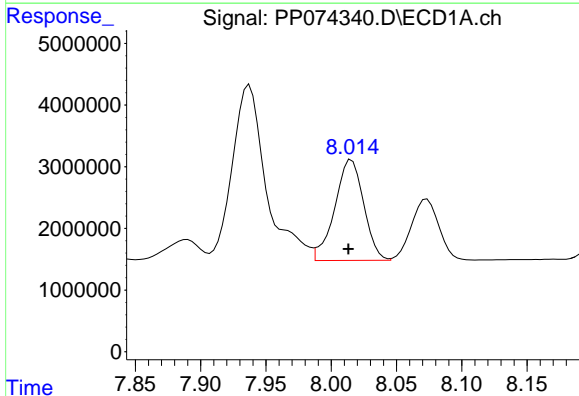
Manual Integrations  
 APPROVED

Reviewed By :Yogesh Patel 08/14/2025  
 Supervised By :mohammad ahmed 08/18/2025



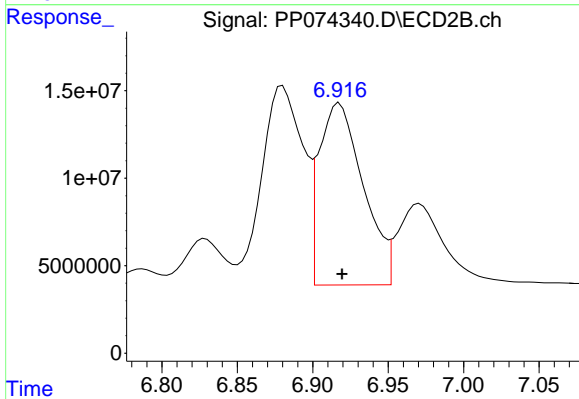
#32 AR-1260-2

R.T.: 6.708 min  
 Delta R.T.: -0.001 min  
 Response: 190935160  
 Conc: 610.60 ng/ml



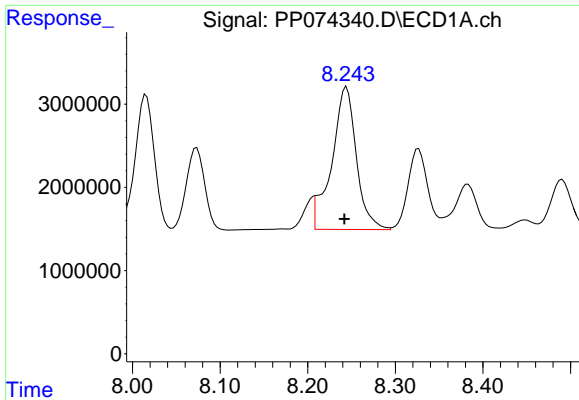
#33 AR-1260-3

R.T.: 8.016 min  
 Delta R.T.: 0.002 min  
 Response: 25253920  
 Conc: 473.84 ng/ml



#33 AR-1260-3

R.T.: 6.918 min  
 Delta R.T.: -0.002 min  
 Response: 211806284  
 Conc: 537.42 ng/ml



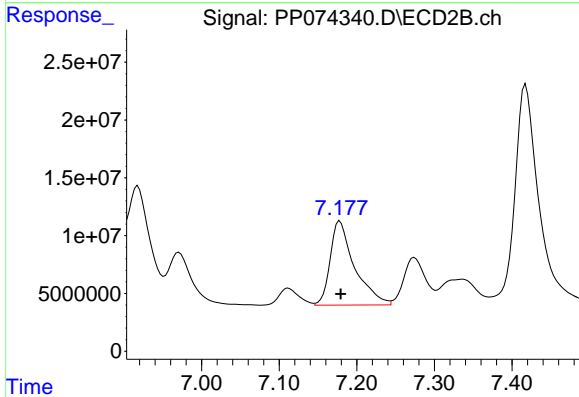
#34 AR-1260-4

R.T.: 8.243 min  
 Delta R.T.: 0.001 min  
 Response: 33208454  
 Conc: 530.36 ng/ml

Instrument :  
 ECD\_P  
 ClientSampleId :  
 PB169227BS

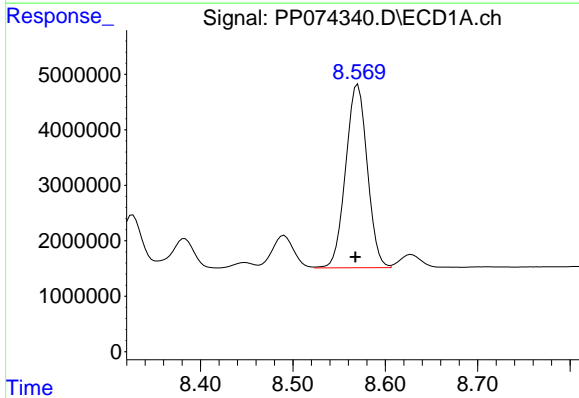
Manual Integrations  
 APPROVED

Reviewed By :Yogesh Patel 08/14/2025  
 Supervised By :mohammad ahmed 08/18/2025



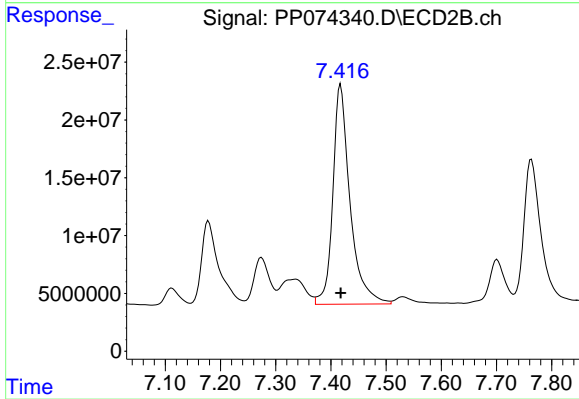
#34 AR-1260-4

R.T.: 7.178 min  
 Delta R.T.: -0.001 min  
 Response: 159186702  
 Conc: 547.07 ng/ml



#35 AR-1260-5

R.T.: 8.570 min  
 Delta R.T.: 0.003 min  
 Response: 53626648  
 Conc: 473.30 ng/ml



#35 AR-1260-5

R.T.: 7.418 min  
 Delta R.T.: 0.000 min  
 Response: 411333033  
 Conc: 543.08 ng/ml