

Data Path : Z:\pestpcbsrv\HPCHEM1\ECD_P\Data\PP081325\
 Data File : PP074341.D
 Signal(s) : Signal #1: ECD1A.ch Signal #2: ECD2B.ch
 Acq On : 13 Aug 2025 13:11
 Operator : YP\AJ
 Sample : Q2732-02
 Misc :
 ALS Vial : 9 Sample Multiplier: 1

Instrument :
 ECD_P
ClientSampleId :
 WC-A7-01-C

Manual Integrations
APPROVED
 Reviewed By :Yogesh Patel 08/14/2025
 Supervised By :mohammad ahmed 08/18/2025

Integration File signal 1: autoint1.e
 Integration File signal 2: autoint2.e
 Quant Time: Aug 13 15:41:36 2025
 Quant Method : Z:\pestpcbsrv\HPCHEM1\ECD_P\methods\PP080125.M
 Quant Title : GC EXTRACTABLES
 QLast Update : Mon Aug 04 11:01:49 2025
 Response via : Initial Calibration
 Integrator: ChemStation

Volume Inj. : 2 µl
 Signal #1 Phase : ZB-MR1 Signal #2 Phase: ZB-MR2
 Signal #1 Info : 30Mx0.32mmx 0.50µ Signal #2 Info : 30M x 0.32mm x 0.25µm

Compound	RT#1	RT#2	Resp#1	Resp#2	ng/ml	ng/ml

System Monitoring Compounds						
1) SA Tetrachlo...	4.654	3.802	20659186	125.6E6	18.474m	32.747m#
2) SA Decachlor...	10.435	8.816	20906950	113.6E6	21.528	18.888

Target Compounds

 (f)=RT Delta > 1/2 Window (#)=Amounts differ by > 25% (m)=manual int.

Data Path : Z:\pestpcbsrv\HPCHEM1\ECD_P\Data\PP081325\
 Data File : PP074341.D
 Signal(s) : Signal #1: ECD1A.ch Signal #2: ECD2B.ch
 Acq On : 13 Aug 2025 13:11
 Operator : YP\AJ
 Sample : Q2732-02
 Misc :
 ALS Vial : 9 Sample Multiplier: 1

Instrument :

ECD_P

ClientSampleId :

WC-A7-01-C

Manual Integrations

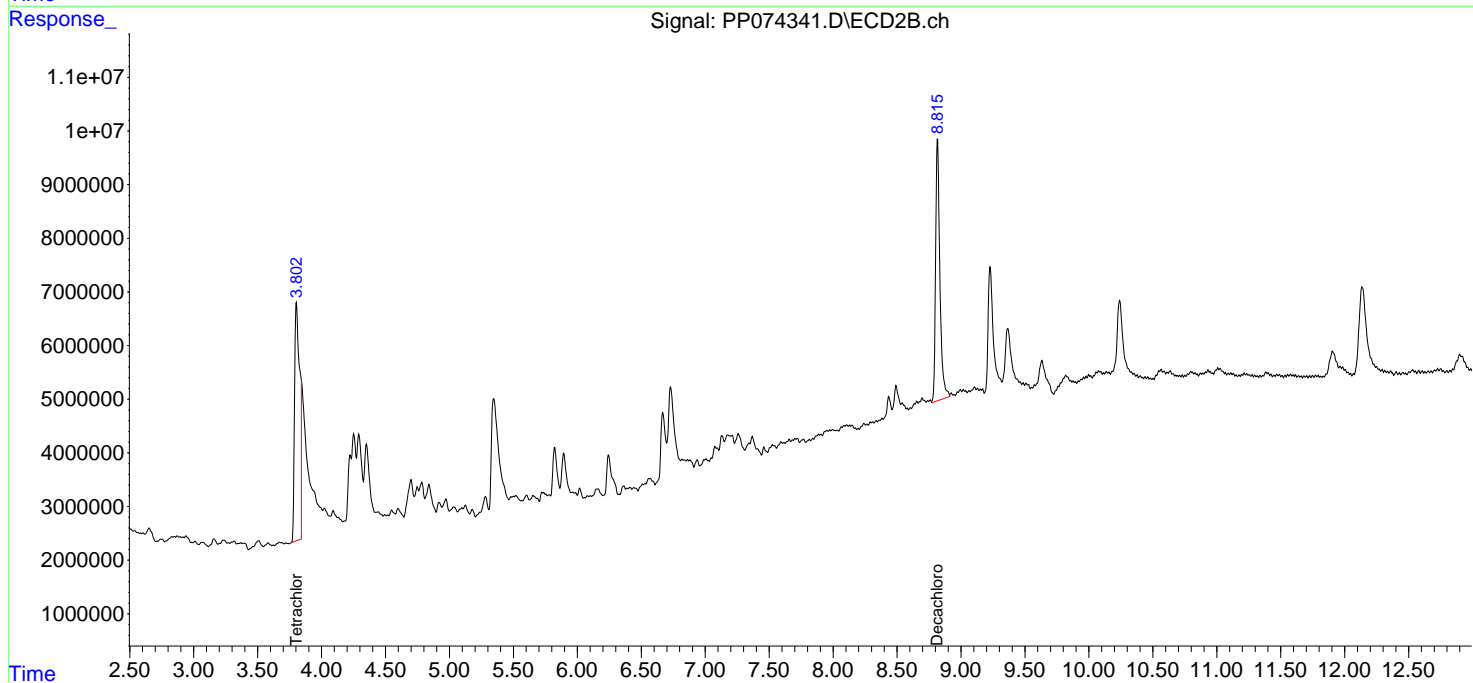
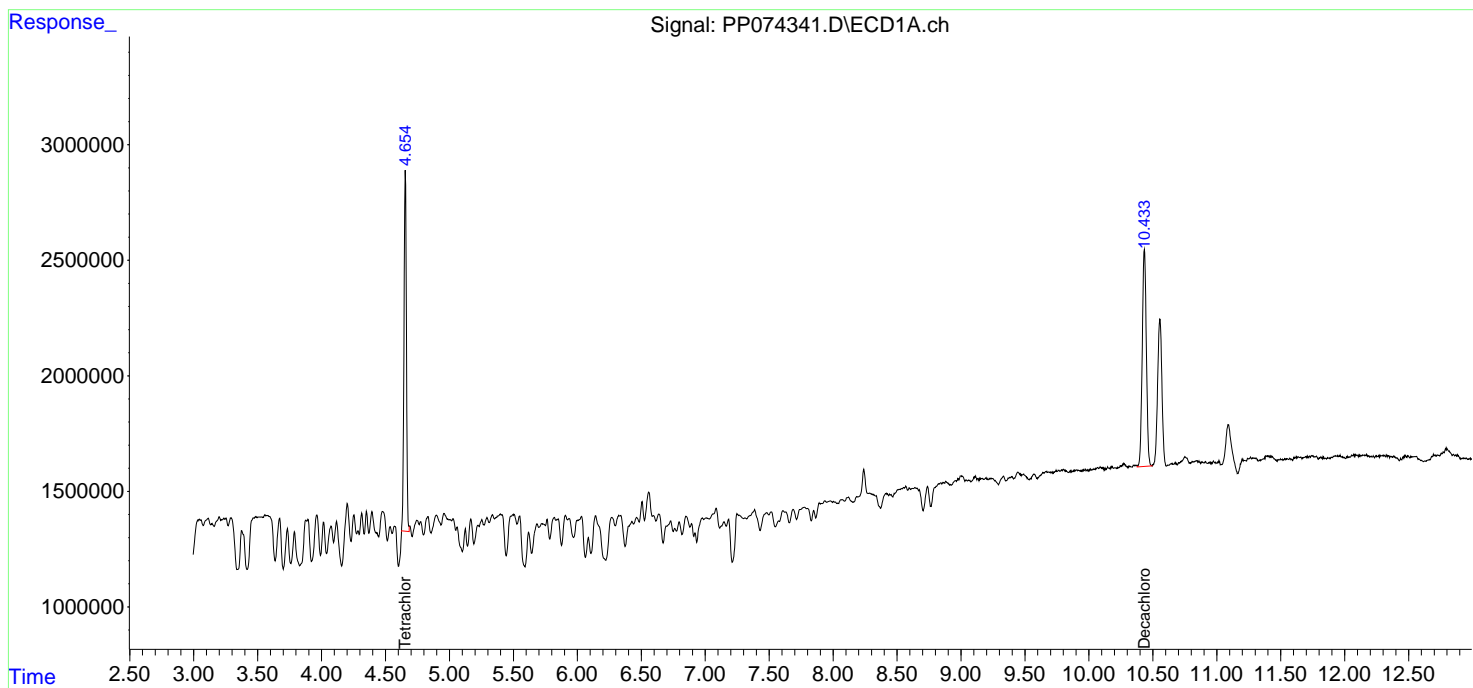
APPROVED

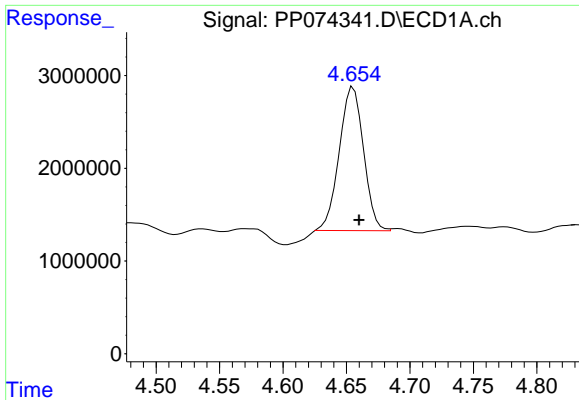
Reviewed By :Yogesh Patel 08/14/2025

Supervised By :mohammad ahmed 08/18/2025

Integration File signal 1: autoint1.e
 Integration File signal 2: autoint2.e
 Quant Time: Aug 13 15:41:36 2025
 Quant Method : Z:\pestpcbsrv\HPCHEM1\ECD_P\methods\PP080125.M
 Quant Title : GC EXTRACTABLES
 QLast Update : Mon Aug 04 11:01:49 2025
 Response via : Initial Calibration
 Integrator: ChemStation

Volume Inj. : 2 µl
 Signal #1 Phase : ZB-MR1 Signal #2 Phase: ZB-MR2
 Signal #1 Info : 30Mx0.32mmx 0.50µ Signal #2 Info : 30M x 0.32mm x 0.25µm



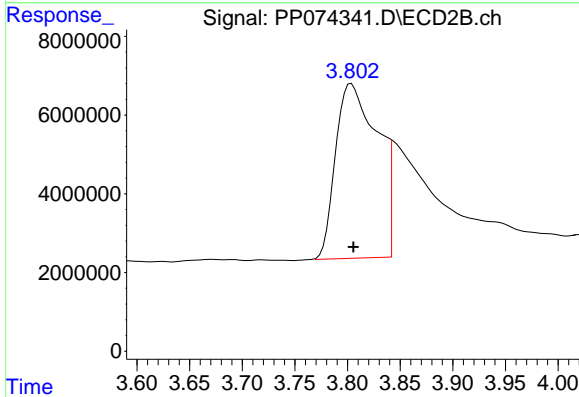


#1 Tetrachloro-m-xylene
 R.T.: 4.654 min
 Delta R.T.: -0.006 min
 Response: 20659186
 Conc: 18.47 ng/ml

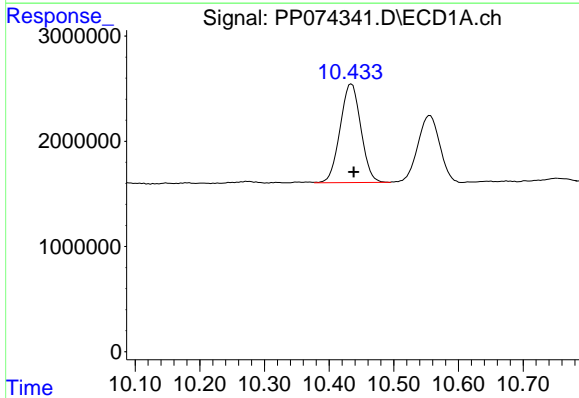
Instrument :
 ECD_P
 ClientSampleId :
 WC-A7-01-C

Manual Integrations
 APPROVED

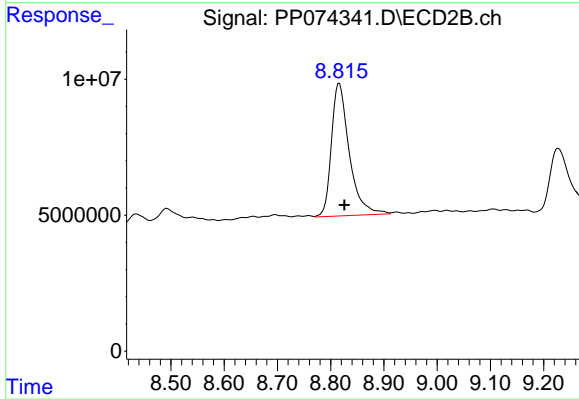
Reviewed By :Yogesh Patel 08/14/2025
 Supervised By :mohammad ahmed 08/18/2025



#1 Tetrachloro-m-xylene
 R.T.: 3.802 min
 Delta R.T.: -0.003 min
 Response: 125564311
 Conc: 32.75 ng/ml m



#2 Decachlorobiphenyl
 R.T.: 10.435 min
 Delta R.T.: -0.003 min
 Response: 20906950
 Conc: 21.53 ng/ml



#2 Decachlorobiphenyl
 R.T.: 8.816 min
 Delta R.T.: -0.010 min
 Response: 113585453
 Conc: 18.89 ng/ml