

Data Path : Z:\pestpcbsrv\HPCHEM1\ECD\_P\Data\PP081325\  
 Data File : PP074342.D  
 Signal(s) : Signal #1: ECD1A.ch Signal #2: ECD2B.ch  
 Acq On : 13 Aug 2025 13:27  
 Operator : YP\AJ  
 Sample : Q2832-01  
 Misc :  
 ALS Vial : 10 Sample Multiplier: 1

**Instrument :**  
 ECD\_P  
**ClientSampleId :**  
 TG-S01

**Manual Integrations**  
**APPROVED**

Reviewed By :Yogesh Patel 08/14/2025  
 Supervised By :mohammad ahmed 08/18/2025

Integration File signal 1: autoint1.e  
 Integration File signal 2: autoint2.e  
 Quant Time: Aug 13 15:42:10 2025  
 Quant Method : Z:\pestpcbsrv\HPCHEM1\ECD\_P\methods\PP080125.M  
 Quant Title : GC EXTRACTABLES  
 QLast Update : Mon Aug 04 11:01:49 2025  
 Response via : Initial Calibration  
 Integrator: ChemStation

Volume Inj. : 2 µl  
 Signal #1 Phase : ZB-MR1 Signal #2 Phase: ZB-MR2  
 Signal #1 Info : 30Mx0.32mmx 0.50µ Signal #2 Info : 30M x 0.32mm x 0.25µm

Compound	RT#1	RT#2	Resp#1	Resp#2	ng/ml	ng/ml
-----						
System Monitoring Compounds						
1) SA Tetrachlo...	4.659	3.802	31349194	101.6E6	28.033	26.499
2) SA Decachlor...	10.439	8.821	25646715	148.4E6	26.408	24.675
Target Compounds						
31) L7 AR-1260-1	7.403	6.550	7749147	27723205	137.503	68.629m#
32) L7 AR-1260-2	7.655	6.705	7733779	23496278	113.478	75.140m#
33) L7 AR-1260-3	8.013	6.914	5311843	25077374	99.667	63.629 #
34) L7 AR-1260-4	8.238	7.176	8867506	17595115	141.620m	60.469 #
35) L7 AR-1260-5	8.567	7.414	10963460	56979962	96.761	75.230
-----						

(f)=RT Delta > 1/2 Window (#)=Amounts differ by > 25% (m)=manual int.

Data Path : Z:\pestpcbsrv\HPCHEM1\ECD\_P\Data\PP081325\  
 Data File : PP074342.D  
 Signal(s) : Signal #1: ECD1A.ch Signal #2: ECD2B.ch  
 Acq On : 13 Aug 2025 13:27  
 Operator : YP\AJ  
 Sample : Q2832-01  
 Misc :  
 ALS Vial : 10 Sample Multiplier: 1

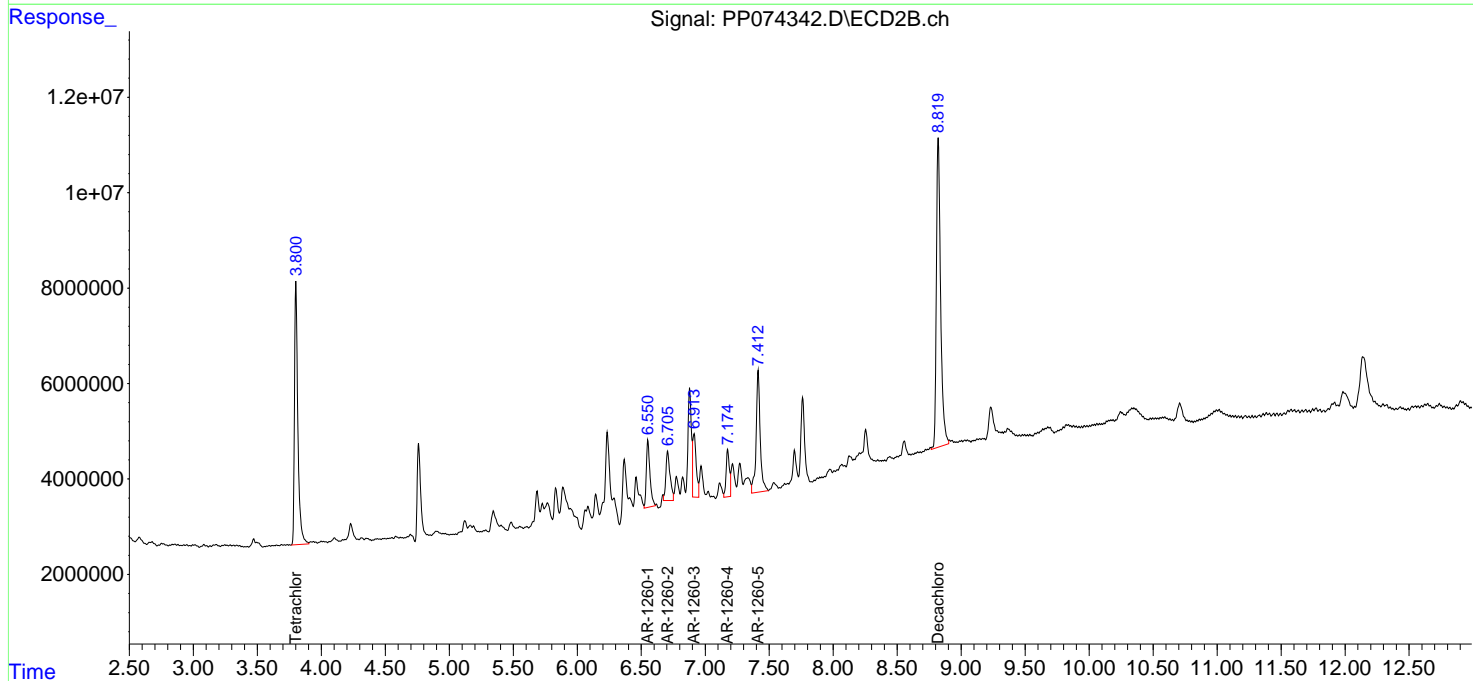
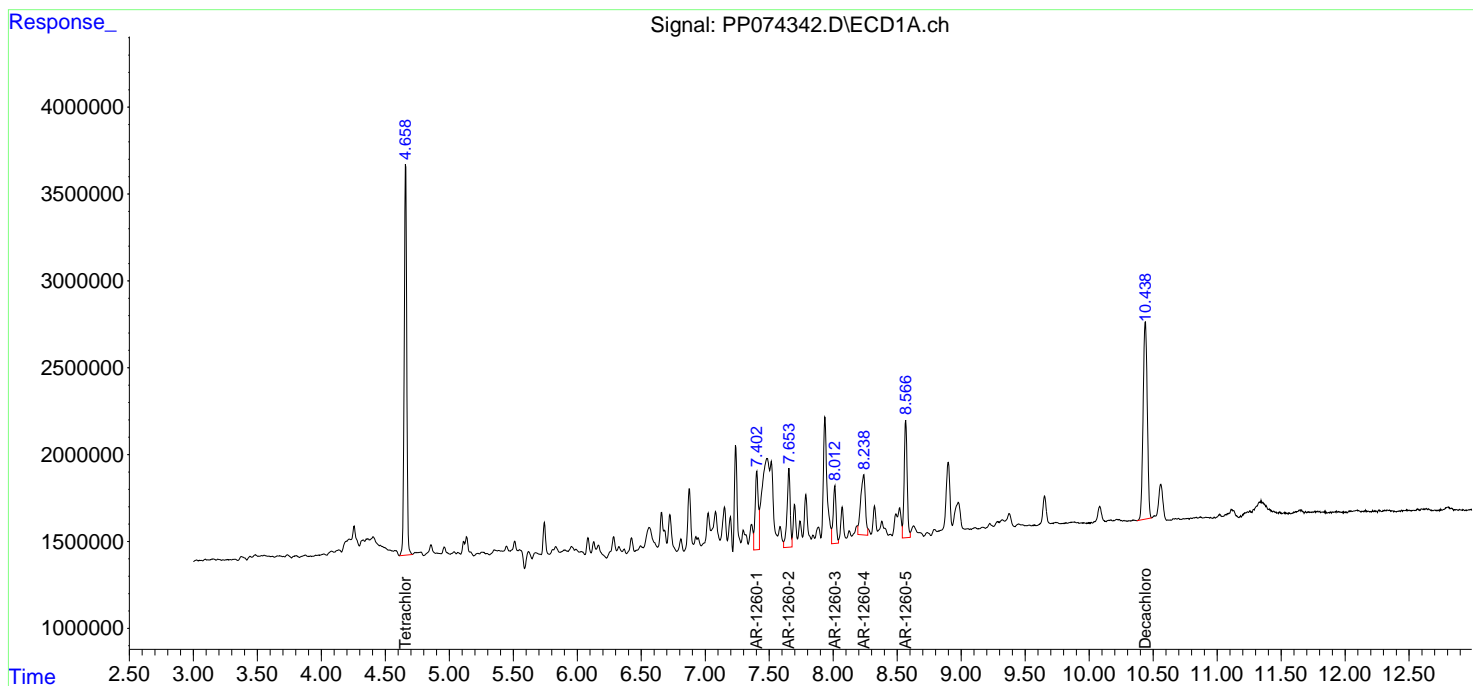
**Instrument :**  
 ECD\_P  
**ClientSampleId :**  
 TG-S01

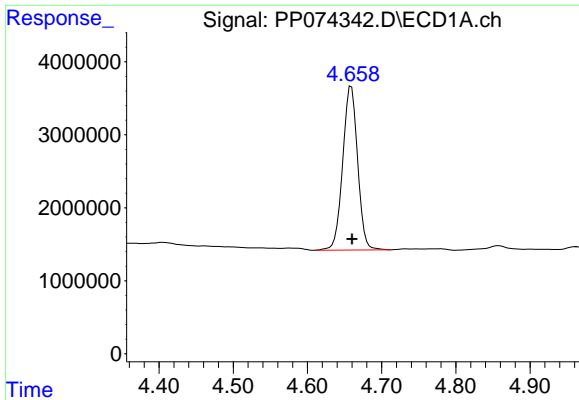
**Manual Integrations**  
**APPROVED**

Reviewed By :Yogesh Patel 08/14/2025  
 Supervised By :mohammad ahmed 08/18/2025

Integration File signal 1: autoint1.e  
 Integration File signal 2: autoint2.e  
 Quant Time: Aug 13 15:42:10 2025  
 Quant Method : Z:\pestpcbsrv\HPCHEM1\ECD\_P\methods\PP080125.M  
 Quant Title : GC EXTRACTABLES  
 QLast Update : Mon Aug 04 11:01:49 2025  
 Response via : Initial Calibration  
 Integrator: ChemStation

Volume Inj. : 2 µl  
 Signal #1 Phase : ZB-MR1 Signal #2 Phase: ZB-MR2  
 Signal #1 Info : 30Mx0.32mmx 0.50µ Signal #2 Info : 30M x 0.32mm x 0.25µm



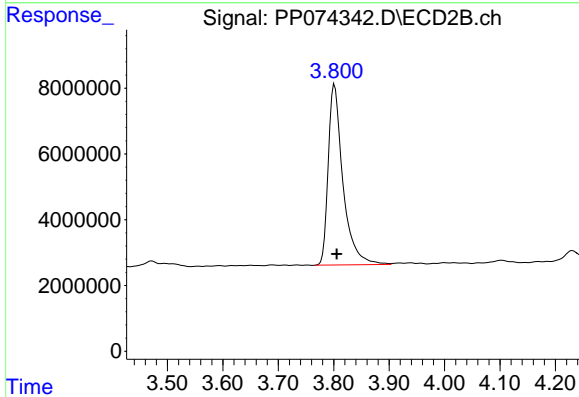


#1 Tetrachloro-m-xylene  
 R.T.: 4.659 min  
 Delta R.T.: 0.000 min  
 Response: 31349194  
 Conc: 28.03 ng/ml

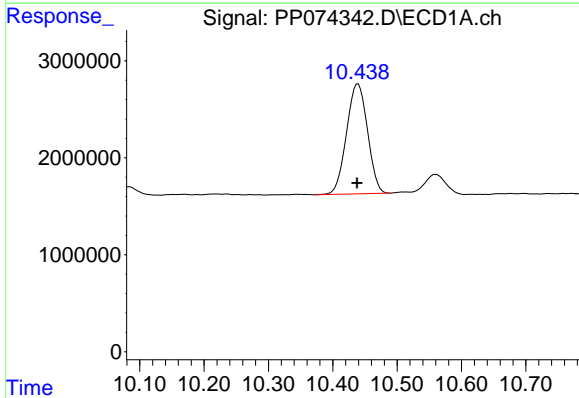
Instrument :  
 ECD\_P  
 ClientSampleId :  
 TG-S01

Manual Integrations  
 APPROVED

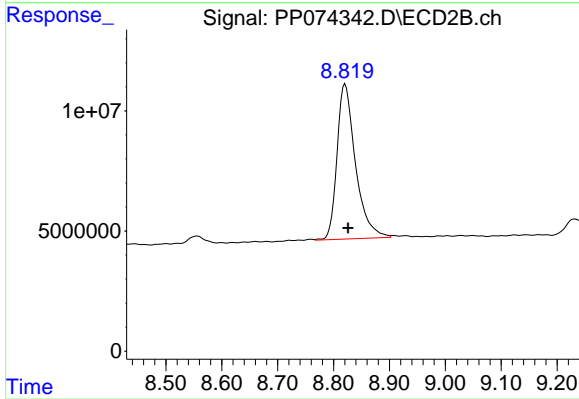
Reviewed By :Yogesh Patel 08/14/2025  
 Supervised By :mohammad ahmed 08/18/2025



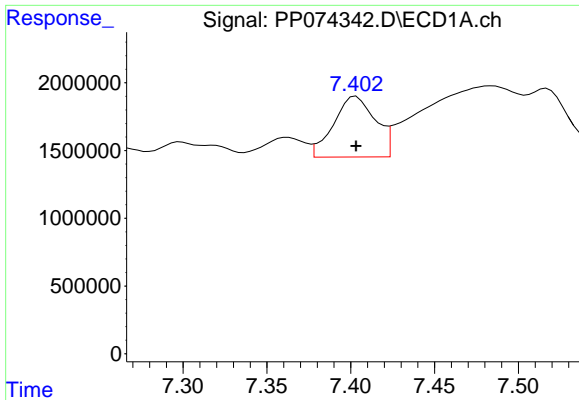
#1 Tetrachloro-m-xylene  
 R.T.: 3.802 min  
 Delta R.T.: -0.004 min  
 Response: 101607106  
 Conc: 26.50 ng/ml



#2 Decachlorobiphenyl  
 R.T.: 10.439 min  
 Delta R.T.: 0.001 min  
 Response: 25646715  
 Conc: 26.41 ng/ml



#2 Decachlorobiphenyl  
 R.T.: 8.821 min  
 Delta R.T.: -0.005 min  
 Response: 148386017  
 Conc: 24.67 ng/ml



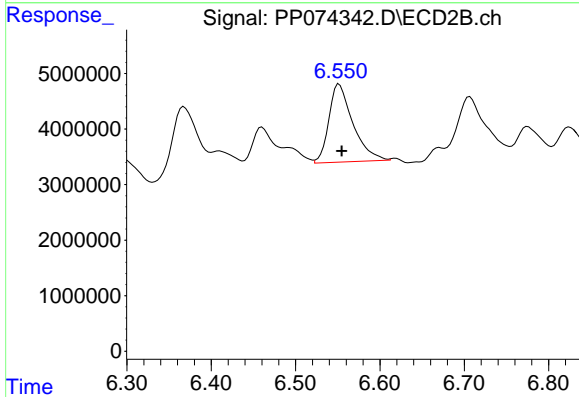
#31 AR-1260-1

R.T.: 7.403 min  
 Delta R.T.: 0.000 min  
 Response: 7749147  
 Conc: 137.50 ng/ml

Instrument :  
 ECD\_P  
 ClientSampleId :  
 TG-S01

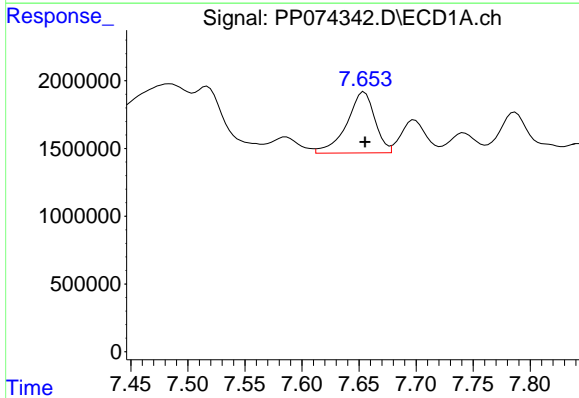
Manual Integrations  
 APPROVED

Reviewed By :Yogesh Patel 08/14/2025  
 Supervised By :mohammad ahmed 08/18/2025



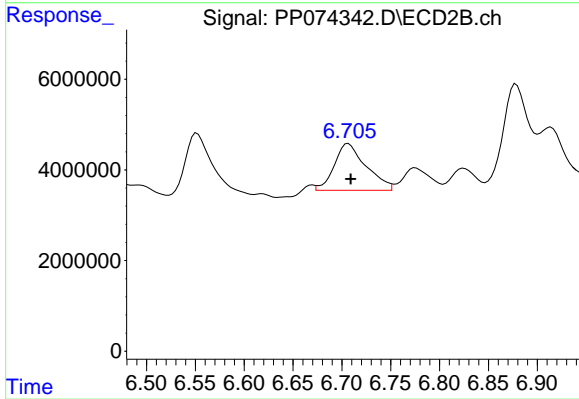
#31 AR-1260-1

R.T.: 6.550 min  
 Delta R.T.: -0.005 min  
 Response: 27723205  
 Conc: 68.63 ng/ml m



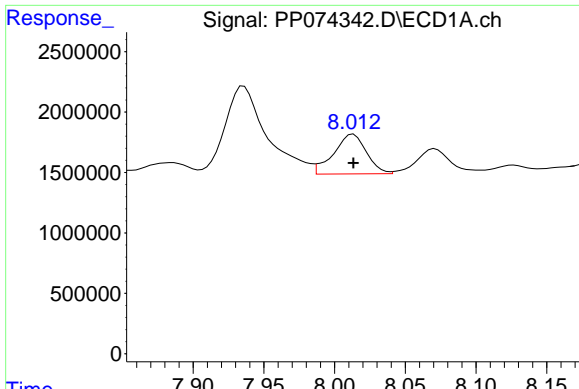
#32 AR-1260-2

R.T.: 7.655 min  
 Delta R.T.: 0.000 min  
 Response: 7733779  
 Conc: 113.48 ng/ml



#32 AR-1260-2

R.T.: 6.705 min  
 Delta R.T.: -0.004 min  
 Response: 23496278  
 Conc: 75.14 ng/ml m



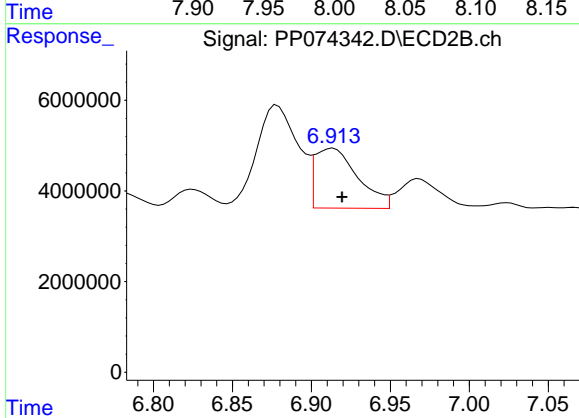
#33 AR-1260-3

R.T.: 8.013 min  
 Delta R.T.: 0.000 min  
 Response: 5311843  
 Conc: 99.67 ng/ml

Instrument :  
 ECD\_P  
 ClientSampleId :  
 TG-S01

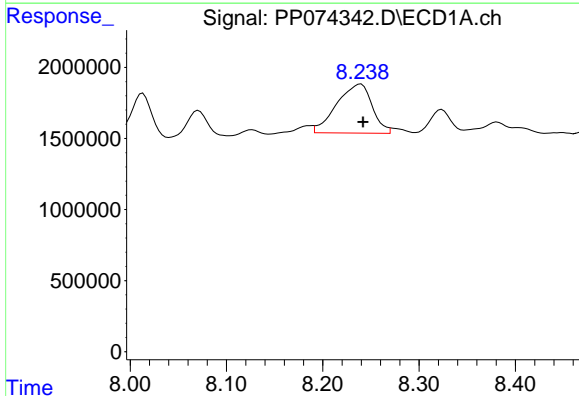
Manual Integrations  
 APPROVED

Reviewed By :Yogesh Patel 08/14/2025  
 Supervised By :mohammad ahmed 08/18/2025



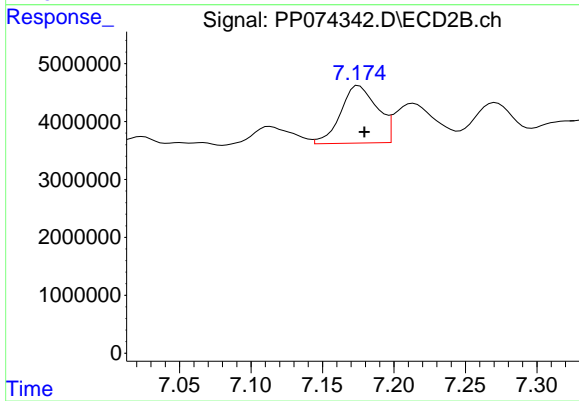
#33 AR-1260-3

R.T.: 6.914 min  
 Delta R.T.: -0.006 min  
 Response: 25077374  
 Conc: 63.63 ng/ml



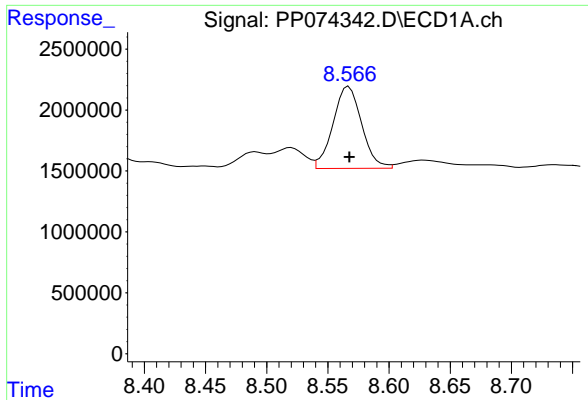
#34 AR-1260-4

R.T.: 8.238 min  
 Delta R.T.: -0.003 min  
 Response: 8867506  
 Conc: 141.62 ng/ml m



#34 AR-1260-4

R.T.: 7.176 min  
 Delta R.T.: -0.004 min  
 Response: 17595115  
 Conc: 60.47 ng/ml



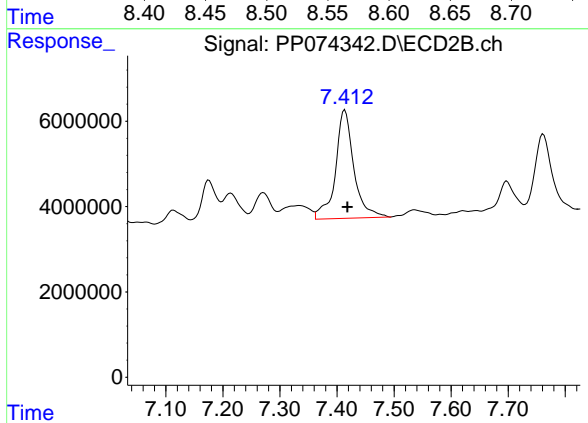
#35 AR-1260-5

R.T.: 8.567 min  
 Delta R.T.: 0.000 min  
 Response: 10963460  
 Conc: 96.76 ng/ml

Instrument :  
 ECD\_P  
 ClientSampleId :  
 TG-S01

Manual Integrations  
 APPROVED

Reviewed By :Yogesh Patel 08/14/2025  
 Supervised By :mohammad ahmed 08/18/2025



#35 AR-1260-5

R.T.: 7.414 min  
 Delta R.T.: -0.004 min  
 Response: 56979962  
 Conc: 75.23 ng/ml