

Data Path : Z:\pestpcbsrv\HPCHEM1\ECD\_P\Data\PP081325\  
 Data File : PP074343.D  
 Signal(s) : Signal #1: ECD1A.ch Signal #2: ECD2B.ch  
 Acq On : 13 Aug 2025 13:44  
 Operator : YP\AJ  
 Sample : Q2832-03  
 Misc :  
 ALS Vial : 11 Sample Multiplier: 1

**Instrument :**  
 ECD\_P  
**ClientSampleId :**  
 TG-S02

**Manual Integrations**  
**APPROVED**  
 Reviewed By :Yogesh Patel 08/14/2025  
 Supervised By :mohammad ahmed 08/18/2025

Integration File signal 1: autoint1.e  
 Integration File signal 2: autoint2.e  
 Quant Time: Aug 13 15:42:42 2025  
 Quant Method : Z:\pestpcbsrv\HPCHEM1\ECD\_P\methods\PP080125.M  
 Quant Title : GC EXTRACTABLES  
 QLast Update : Mon Aug 04 11:01:49 2025  
 Response via : Initial Calibration  
 Integrator: ChemStation

Volume Inj. : 2 µl  
 Signal #1 Phase : ZB-MR1 Signal #2 Phase: ZB-MR2  
 Signal #1 Info : 30Mx0.32mmx 0.50µ Signal #2 Info : 30M x 0.32mm x 0.25µm

Compound	RT#1	RT#2	Resp#1	Resp#2	ng/ml	ng/ml
-----						
System Monitoring Compounds						
1) SA Tetrachlo...	4.662	3.804	30414749	108.8E6	27.197	28.382
2) SA Decachlor...	10.443	8.823	23891234	140.8E6	24.601	23.420
Target Compounds						
31) L7 AR-1260-1	7.404	6.554	45203625	358.3E6	802.108m	886.940m
32) L7 AR-1260-2	7.657	6.709	60691672	267.9E6	890.529m	856.763
33) L7 AR-1260-3	8.015	6.917	42833242	414.8E6	803.687m	1052.557 #
34) L7 AR-1260-4	8.243	7.180	72252088	334.6E6	1153.911m	1149.912
35) L7 AR-1260-5	8.570	7.418	106.8E6	921.5E6	942.419m	1216.631 #
-----						

(f)=RT Delta > 1/2 Window (#)=Amounts differ by > 25% (m)=manual int.

Data Path : Z:\pestpcbsrv\HPCHEM1\ECD\_P\Data\PP081325\  
 Data File : PP074343.D  
 Signal(s) : Signal #1: ECD1A.ch Signal #2: ECD2B.ch  
 Acq On : 13 Aug 2025 13:44  
 Operator : YP\AJ  
 Sample : Q2832-03  
 Misc :  
 ALS Vial : 11 Sample Multiplier: 1

**Instrument :**

ECD\_P

**ClientSampleId :**

TG-S02

**Manual Integrations**

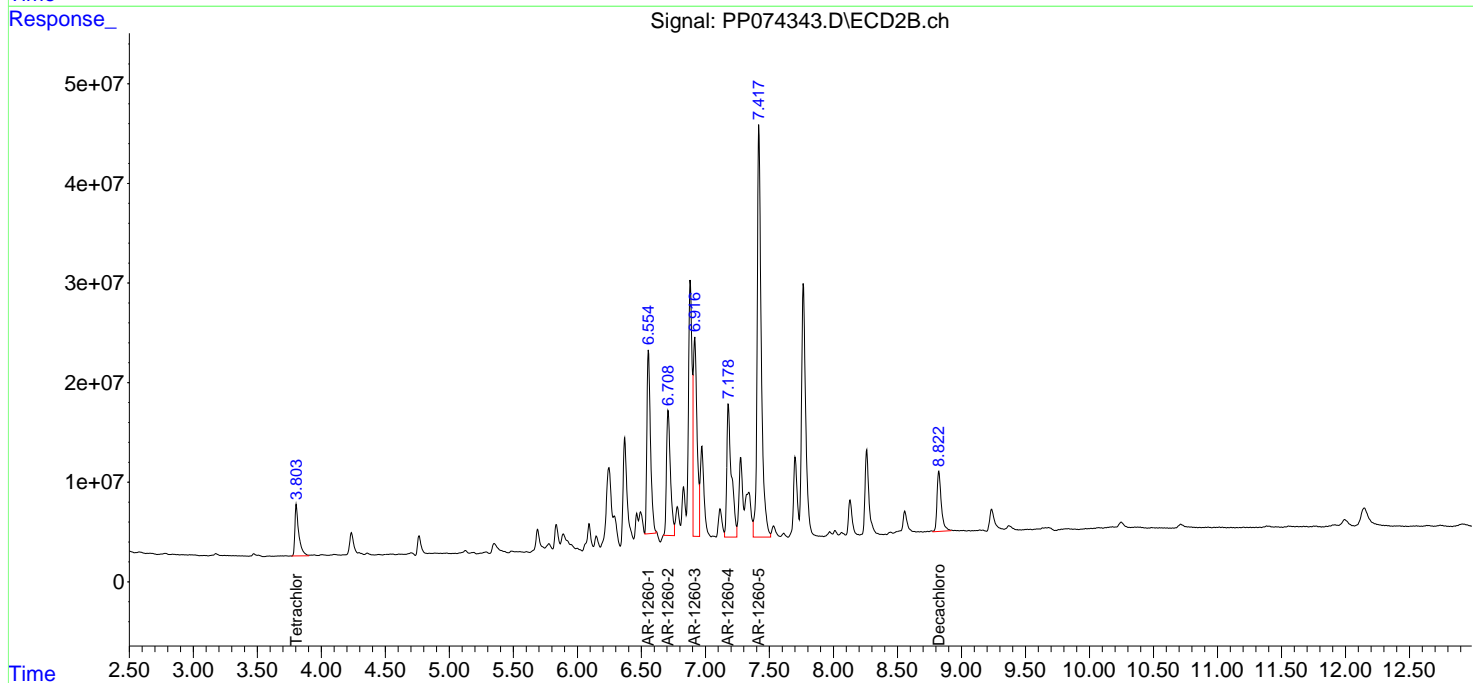
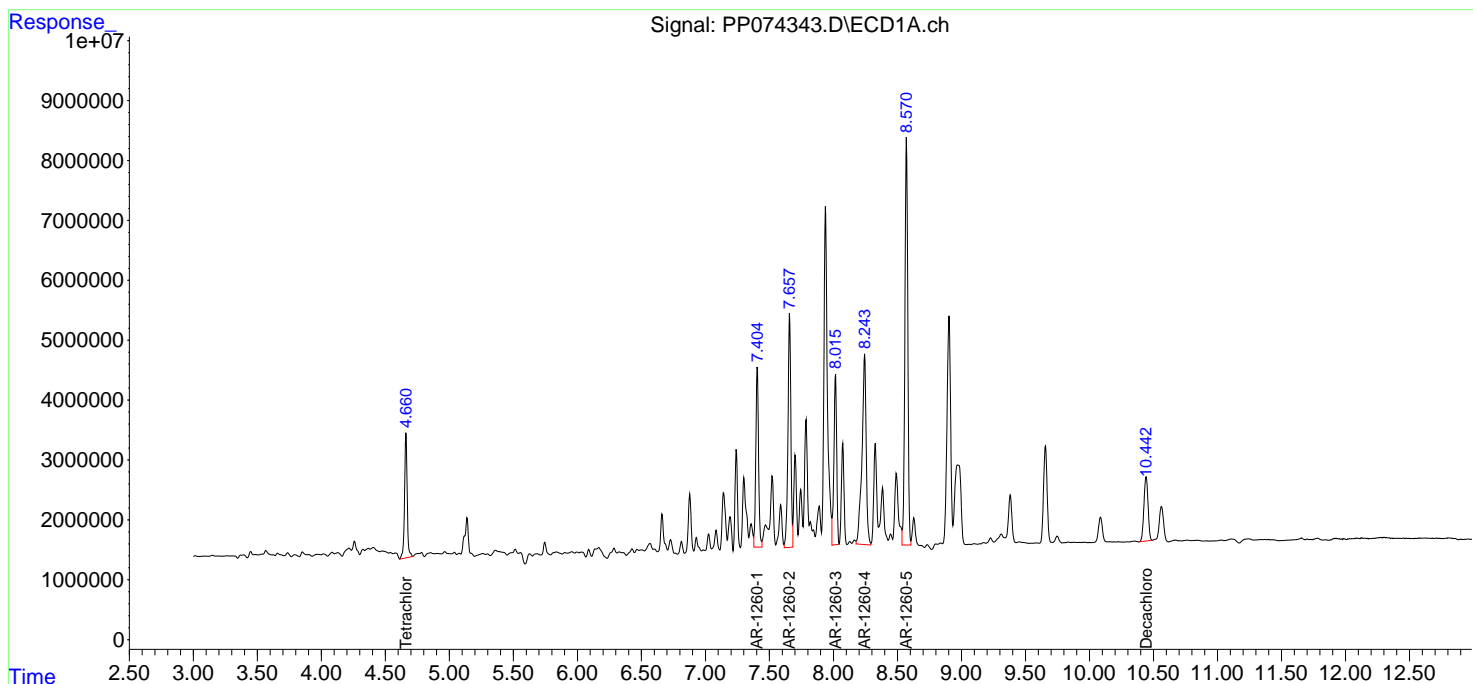
**APPROVED**

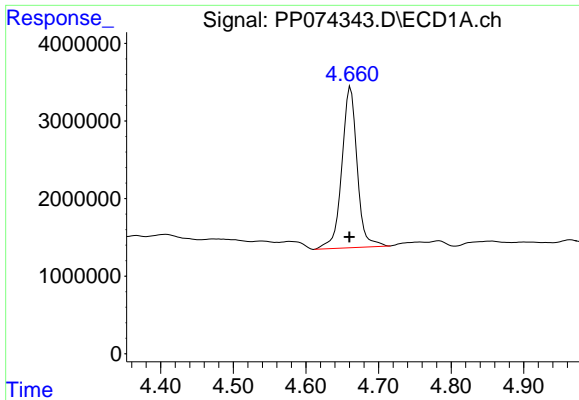
Reviewed By :Yogesh Patel 08/14/2025

Supervised By :mohammad ahmed 08/18/2025

Integration File signal 1: autoint1.e  
 Integration File signal 2: autoint2.e  
 Quant Time: Aug 13 15:42:42 2025  
 Quant Method : Z:\pestpcbsrv\HPCHEM1\ECD\_P\methods\PP080125.M  
 Quant Title : GC EXTRACTABLES  
 QLast Update : Mon Aug 04 11:01:49 2025  
 Response via : Initial Calibration  
 Integrator: ChemStation

Volume Inj. : 2 µl  
 Signal #1 Phase : ZB-MR1 Signal #2 Phase: ZB-MR2  
 Signal #1 Info : 30Mx0.32mmx 0.50µ Signal #2 Info : 30M x 0.32mm x 0.25µm



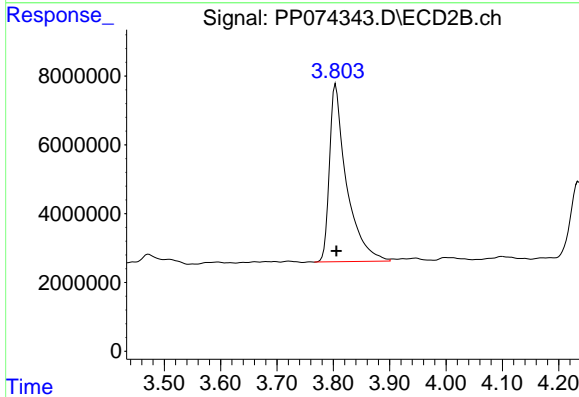


#1 Tetrachloro-m-xylene  
 R.T.: 4.662 min  
 Delta R.T.: 0.002 min  
 Response: 30414749  
 Conc: 27.20 ng/ml

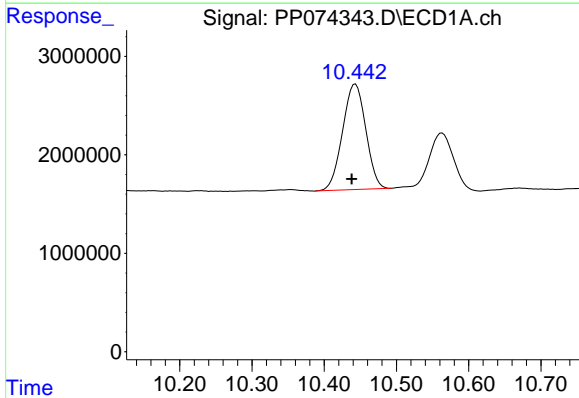
Instrument :  
 ECD\_P  
 ClientSampleId :  
 TG-S02

Manual Integrations  
 APPROVED

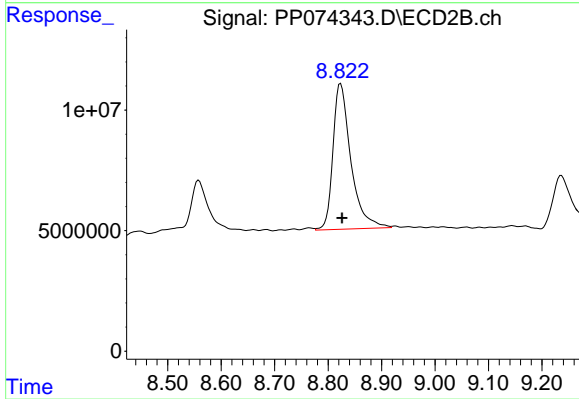
Reviewed By :Yogesh Patel 08/14/2025  
 Supervised By :mohammad ahmed 08/18/2025



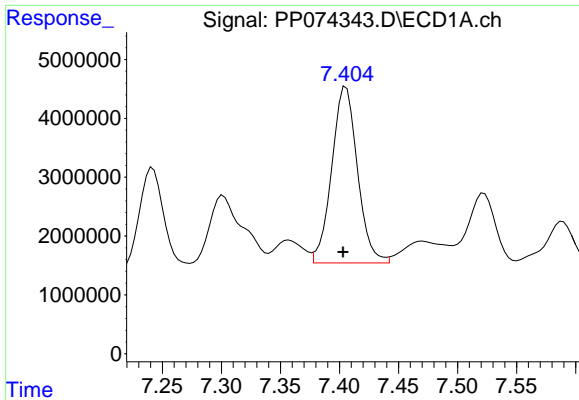
#1 Tetrachloro-m-xylene  
 R.T.: 3.804 min  
 Delta R.T.: -0.001 min  
 Response: 108829574  
 Conc: 28.38 ng/ml



#2 Decachlorobiphenyl  
 R.T.: 10.443 min  
 Delta R.T.: 0.005 min  
 Response: 23891234  
 Conc: 24.60 ng/ml



#2 Decachlorobiphenyl  
 R.T.: 8.823 min  
 Delta R.T.: -0.002 min  
 Response: 140836648  
 Conc: 23.42 ng/ml



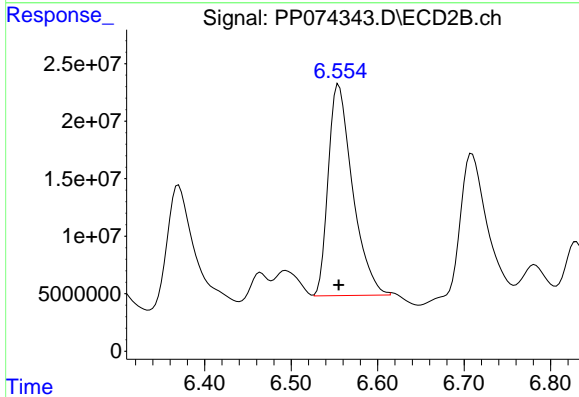
#31 AR-1260-1

R.T.: 7.404 min  
 Delta R.T.: 0.001 min  
 Response: 45203625  
 Conc: 802.11 ng/ml

Instrument :  
 ECD\_P  
 ClientSampleId :  
 TG-S02

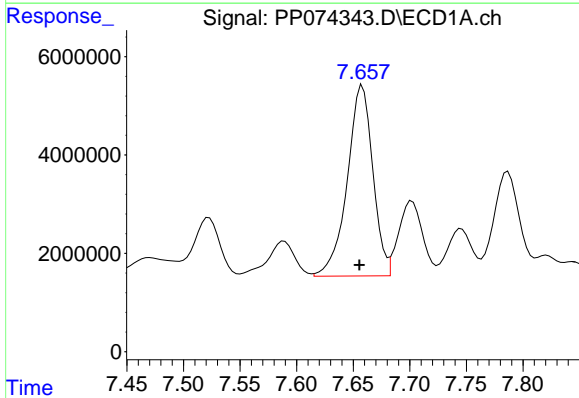
Manual Integrations  
 APPROVED

Reviewed By :Yogesh Patel 08/14/2025  
 Supervised By :mohammad ahmed 08/18/2025



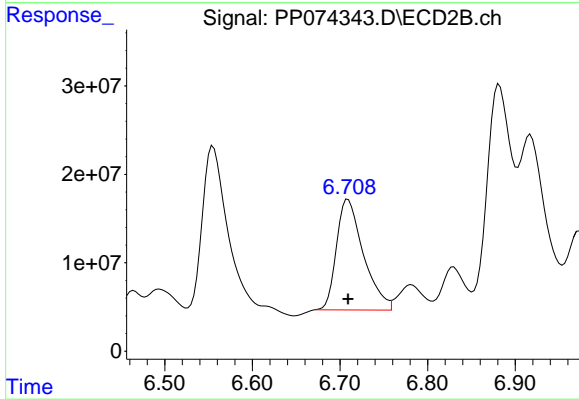
#31 AR-1260-1

R.T.: 6.554 min  
 Delta R.T.: -0.001 min  
 Response: 358285956  
 Conc: 886.94 ng/ml m



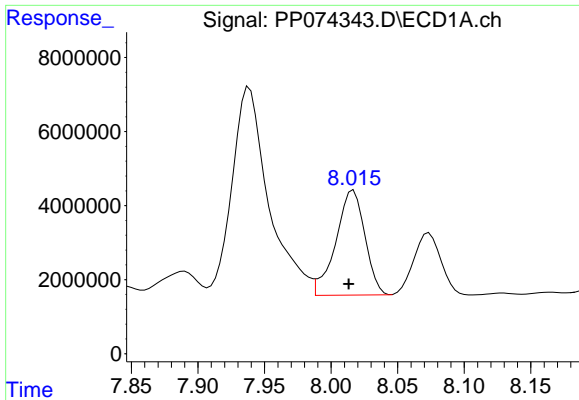
#32 AR-1260-2

R.T.: 7.657 min  
 Delta R.T.: 0.001 min  
 Response: 60691672  
 Conc: 890.53 ng/ml m



#32 AR-1260-2

R.T.: 6.709 min  
 Delta R.T.: 0.000 min  
 Response: 267908750  
 Conc: 856.76 ng/ml



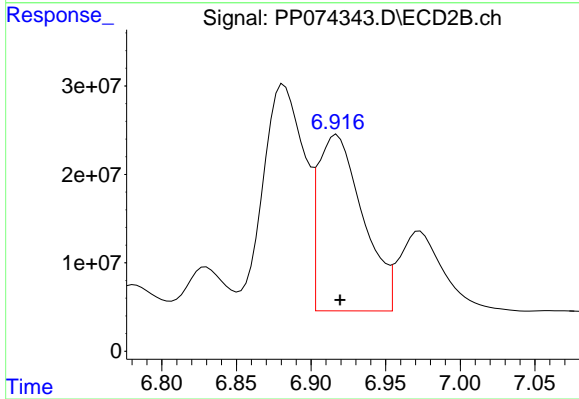
#33 AR-1260-3

R.T.: 8.015 min  
 Delta R.T.: 0.002 min  
 Response: 42833242  
 Conc: 803.69 ng/ml

Instrument :  
 ECD\_P  
 ClientSampleId :  
 TG-S02

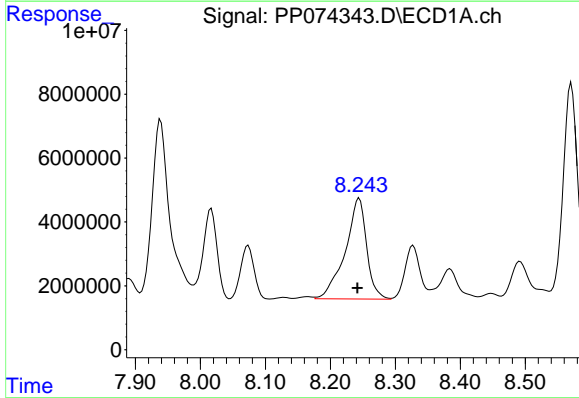
Manual Integrations  
 APPROVED

Reviewed By :Yogesh Patel 08/14/2025  
 Supervised By :mohammad ahmed 08/18/2025



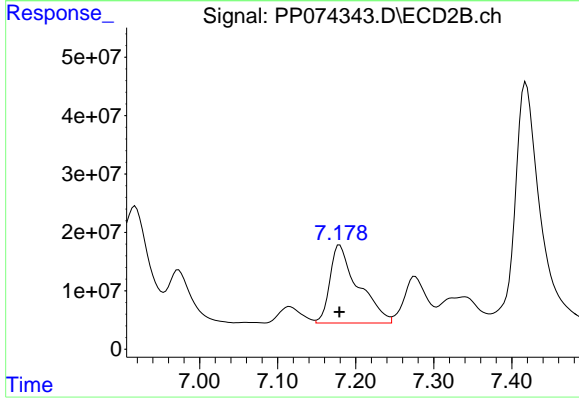
#33 AR-1260-3

R.T.: 6.917 min  
 Delta R.T.: -0.002 min  
 Response: 414832047  
 Conc: 1052.56 ng/ml



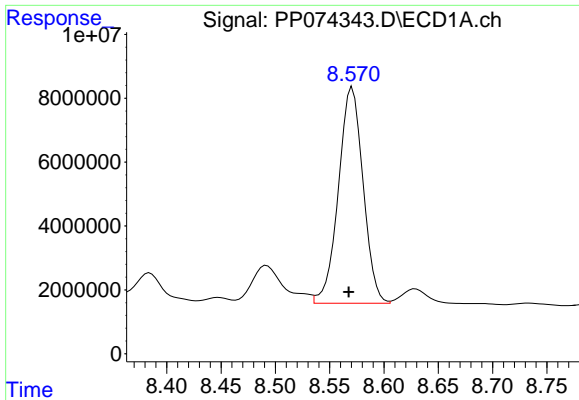
#34 AR-1260-4

R.T.: 8.243 min  
 Delta R.T.: 0.001 min  
 Response: 72252088  
 Conc: 1153.91 ng/ml m



#34 AR-1260-4

R.T.: 7.180 min  
 Delta R.T.: 0.000 min  
 Response: 334600561  
 Conc: 1149.91 ng/ml



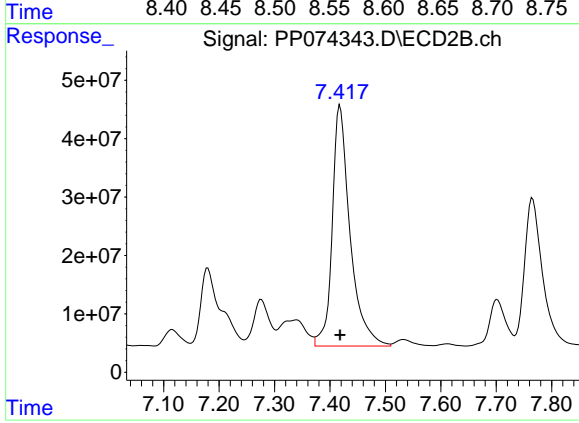
#35 AR-1260-5

R.T.: 8.570 min  
 Delta R.T.: 0.002 min  
 Response: 106780668  
 Conc: 942.42 ng/ml

Instrument :  
 ECD\_P  
 ClientSampleId :  
 TG-S02

Manual Integrations  
 APPROVED

Reviewed By :Yogesh Patel 08/14/2025  
 Supervised By :mohammad ahmed 08/18/2025



#35 AR-1260-5

R.T.: 7.418 min  
 Delta R.T.: 0.000 min  
 Response: 921488463  
 Conc: 1216.63 ng/ml