

Data Path : Z:\pestpcbsrv\HPCHEM1\ECD_P\Data\PP081325\
 Data File : PP074345.D
 Signal(s) : Signal #1: ECD1A.ch Signal #2: ECD2B.ch
 Acq On : 13 Aug 2025 14:16
 Operator : YP\AJ
 Sample : Q2832-03MSD
 Misc :
 ALS Vial : 13 Sample Multiplier: 1

Instrument :
 ECD_P
ClientSampleId :
 TG-S02MSD

Manual Integrations
APPROVED
 Reviewed By :Yogesh Patel 08/14/2025
 Supervised By :mohammad ahmed 08/18/2025

Integration File signal 1: autoint1.e
 Integration File signal 2: autoint2.e
 Quant Time: Aug 13 15:43:47 2025
 Quant Method : Z:\pestpcbsrv\HPCHEM1\ECD_P\methods\PP080125.M
 Quant Title : GC EXTRACTABLES
 QLast Update : Mon Aug 04 11:01:49 2025
 Response via : Initial Calibration
 Integrator: ChemStation

Volume Inj. : 2 µl
 Signal #1 Phase : ZB-MR1 Signal #2 Phase: ZB-MR2
 Signal #1 Info : 30Mx0.32mmx 0.50µ Signal #2 Info : 30M x 0.32mm x 0.25µm

Compound	RT#1	RT#2	Resp#1	Resp#2	ng/ml	ng/ml

System Monitoring Compounds						
1) SA Tetrachlo...	4.661	3.804	27089049	84124648	24.223	21.939
2) SA Decachlor...	10.445	8.825	22290571	132.0E6	22.952	21.953
Target Compounds						
3) L1 AR-1016-1	5.813	4.905	24326925	217.9E6	589.646	546.325
4) L1 AR-1016-2	5.835	4.962	35316025	107.2E6	581.413	570.527
5) L1 AR-1016-3	5.898	5.083	24991267	59697212	630.130	562.812
6) L1 AR-1016-4	5.995	5.124	21512751	63545144	661.026	581.808
7) L1 AR-1016-5	6.287	5.339	21221415	69778245	653.609	596.583
31) L7 AR-1260-1	7.406	6.555	77444421	692.2E6	1374.199	1713.600
32) L7 AR-1260-2	7.658	6.710	93011734	453.0E6	1364.762	1448.730
33) L7 AR-1260-3	8.016	6.918	68577617	682.4E6	1286.733	1731.550 #
34) L7 AR-1260-4	8.243	7.180	105.3E6	573.5E6	1681.746m	1970.853
35) L7 AR-1260-5	8.571	7.419	161.3E6	1502.2E6	1423.342	1983.310 #

(f)=RT Delta > 1/2 Window (#)=Amounts differ by > 25% (m)=manual int.

Data Path : Z:\pestpcbsrv\HPCHEM1\ECD_P\Data\PP081325\
 Data File : PP074345.D
 Signal(s) : Signal #1: ECD1A.ch Signal #2: ECD2B.ch
 Acq On : 13 Aug 2025 14:16
 Operator : YP\AJ
 Sample : Q2832-03MSD
 Misc :
 ALS Vial : 13 Sample Multiplier: 1

Instrument :

ECD_P

ClientSampleId :

TG-S02MSD

Manual Integrations

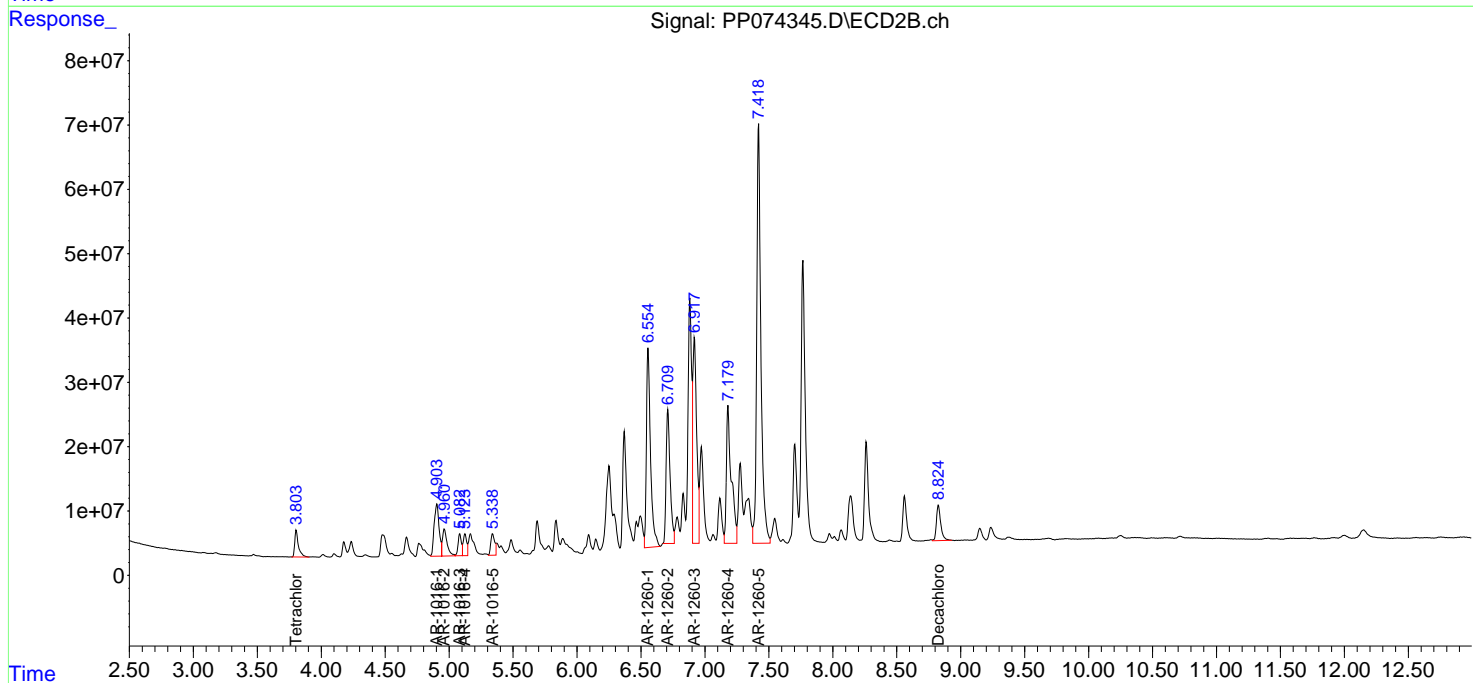
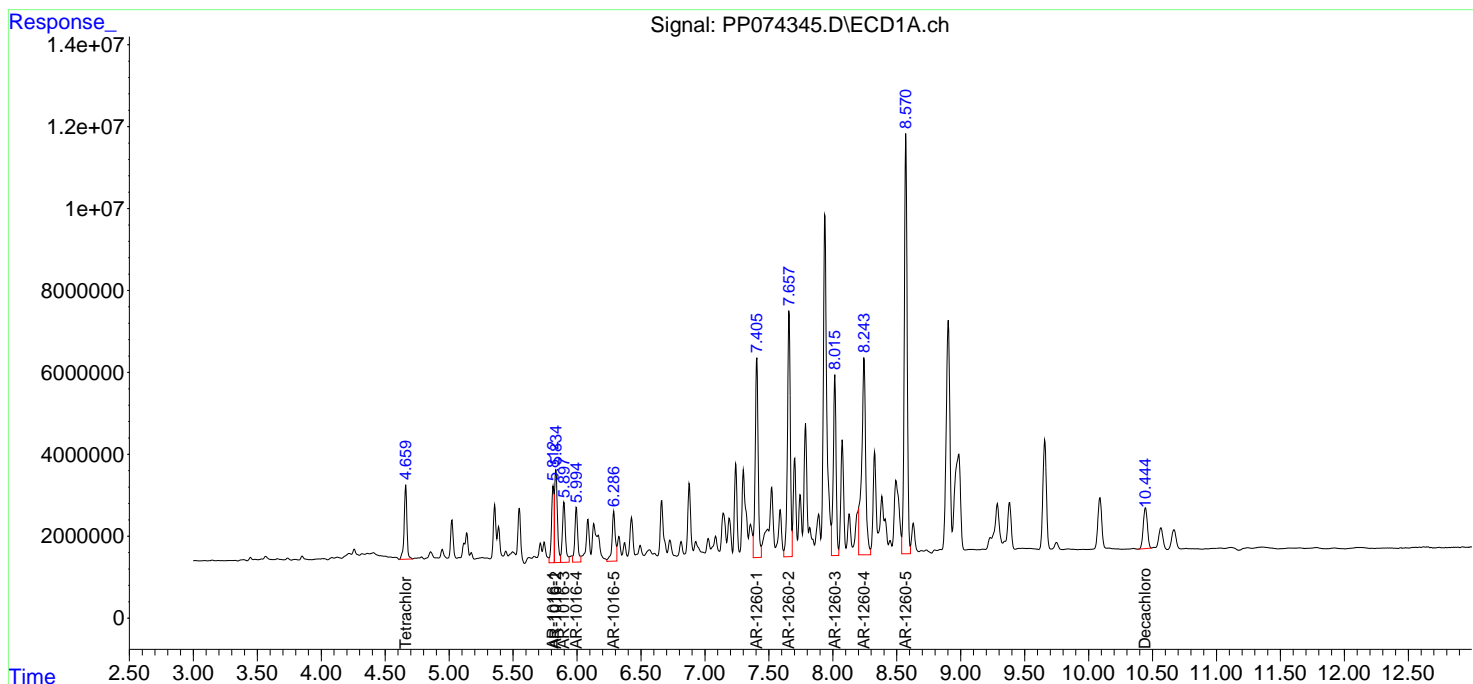
APPROVED

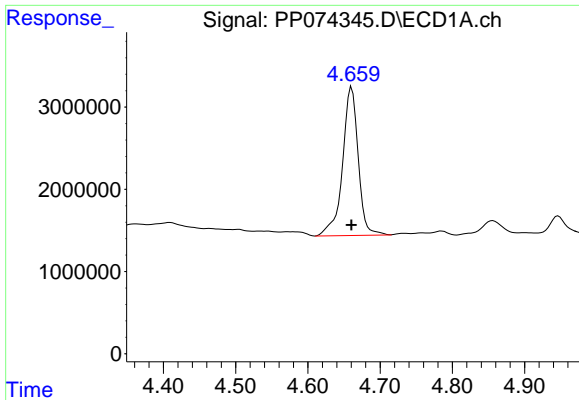
Reviewed By :Yogesh Patel 08/14/2025

Supervised By :mohammad ahmed 08/18/2025

Integration File signal 1: autoint1.e
 Integration File signal 2: autoint2.e
 Quant Time: Aug 13 15:43:47 2025
 Quant Method : Z:\pestpcbsrv\HPCHEM1\ECD_P\methods\PP080125.M
 Quant Title : GC EXTRACTABLES
 QLast Update : Mon Aug 04 11:01:49 2025
 Response via : Initial Calibration
 Integrator: ChemStation

Volume Inj. : 2 µl
 Signal #1 Phase : ZB-MR1 Signal #2 Phase: ZB-MR2
 Signal #1 Info : 30Mx0.32mmx 0.50µ Signal #2 Info : 30M x 0.32mm x 0.25µm





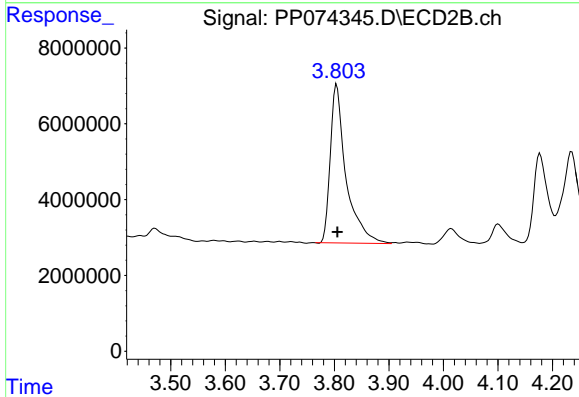
#1 Tetrachloro-m-xylene

R.T.: 4.661 min
 Delta R.T.: 0.000 min
 Response: 27089049
 Conc: 24.22 ng/ml

Instrument :
 ECD_P
 ClientSampleId :
 TG-S02MSD

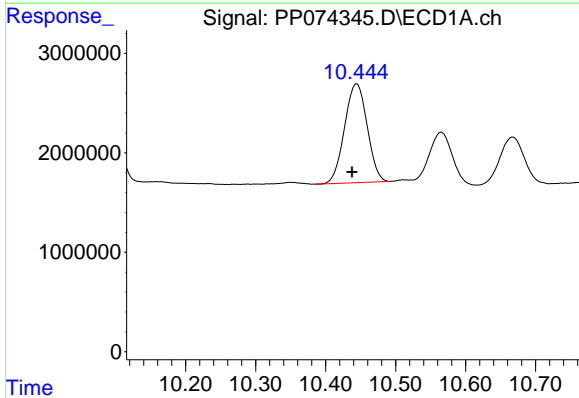
Manual Integrations
 APPROVED

Reviewed By :Yogesh Patel 08/14/2025
 Supervised By :mohammad ahmed 08/18/2025



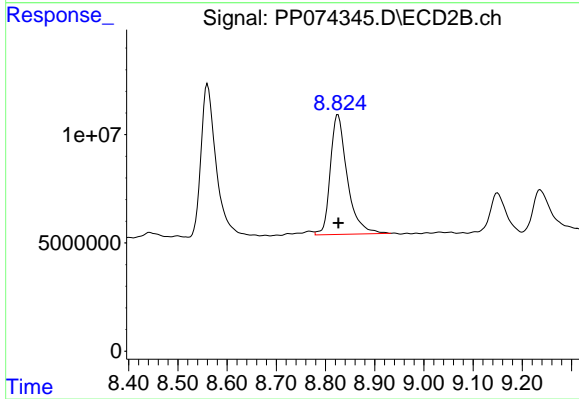
#1 Tetrachloro-m-xylene

R.T.: 3.804 min
 Delta R.T.: -0.001 min
 Response: 84124648
 Conc: 21.94 ng/ml



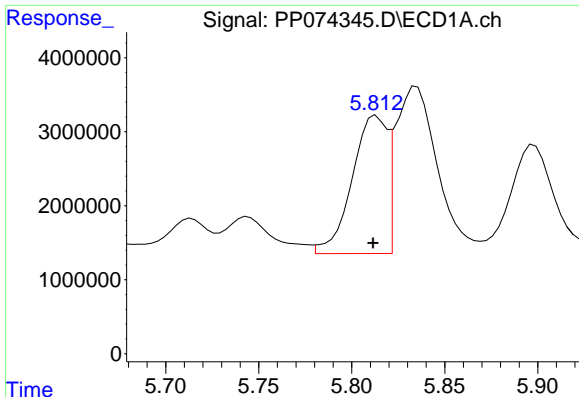
#2 Decachlorobiphenyl

R.T.: 10.445 min
 Delta R.T.: 0.007 min
 Response: 22290571
 Conc: 22.95 ng/ml



#2 Decachlorobiphenyl

R.T.: 8.825 min
 Delta R.T.: 0.000 min
 Response: 132018346
 Conc: 21.95 ng/ml



#3 AR-1016-1

R.T.: 5.813 min
 Delta R.T.: 0.002 min
 Response: 24326925
 Conc: 589.65 ng/ml

Instrument :

ECD_P

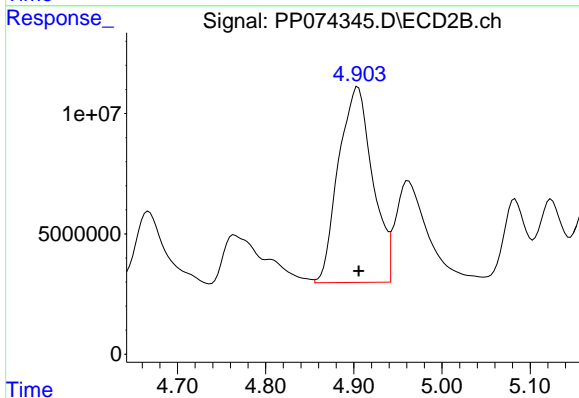
ClientSampleId :

TG-S02MSD

Manual Integrations

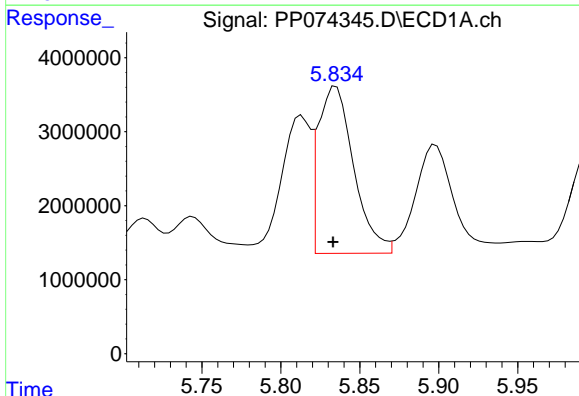
APPROVED

Reviewed By :Yogesh Patel 08/14/2025
 Supervised By :mohammad ahmed 08/18/2025



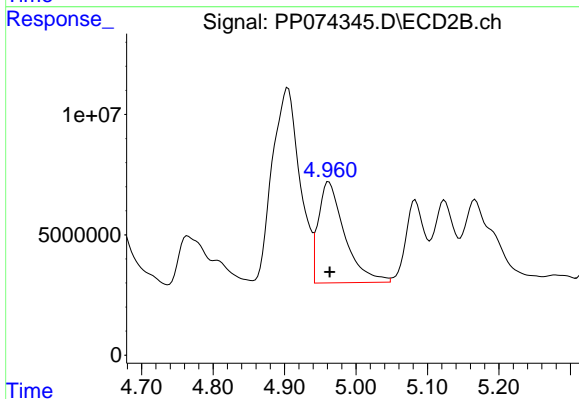
#3 AR-1016-1

R.T.: 4.905 min
 Delta R.T.: 0.000 min
 Response: 217922237
 Conc: 546.33 ng/ml



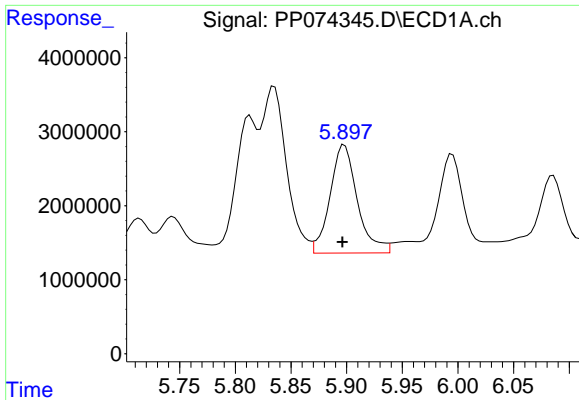
#4 AR-1016-2

R.T.: 5.835 min
 Delta R.T.: 0.002 min
 Response: 35316025
 Conc: 581.41 ng/ml



#4 AR-1016-2

R.T.: 4.962 min
 Delta R.T.: -0.001 min
 Response: 107150016
 Conc: 570.53 ng/ml



#5 AR-1016-3

R.T.: 5.898 min
 Delta R.T.: 0.002 min
 Response: 24991267
 Conc: 630.13 ng/ml

Instrument :

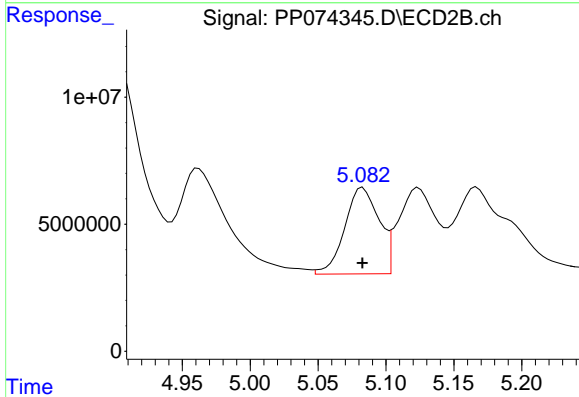
ECD_P

ClientSampleId :

TG-S02MSD

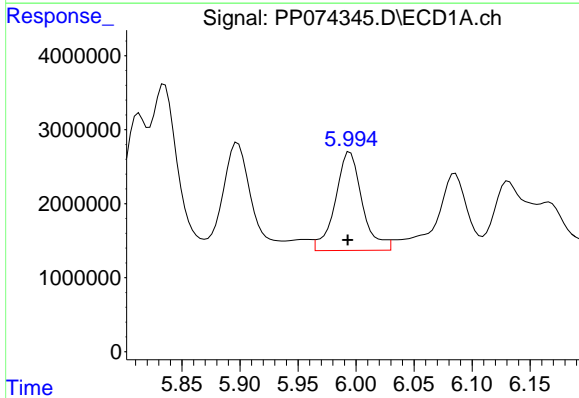
Manual Integrations
 APPROVED

Reviewed By :Yogesh Patel 08/14/2025
 Supervised By :mohammad ahmed 08/18/2025



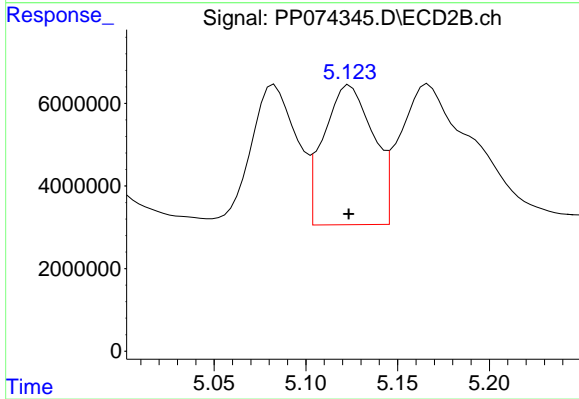
#5 AR-1016-3

R.T.: 5.083 min
 Delta R.T.: 0.000 min
 Response: 59697212
 Conc: 562.81 ng/ml



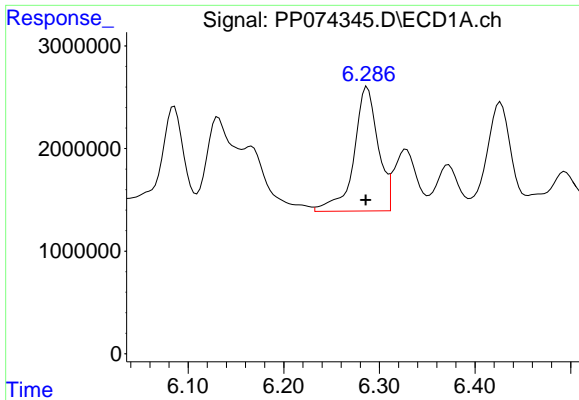
#6 AR-1016-4

R.T.: 5.995 min
 Delta R.T.: 0.002 min
 Response: 21512751
 Conc: 661.03 ng/ml



#6 AR-1016-4

R.T.: 5.124 min
 Delta R.T.: 0.000 min
 Response: 63545144
 Conc: 581.81 ng/ml



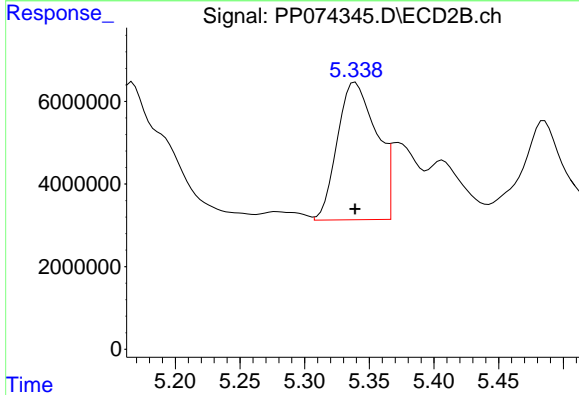
#7 AR-1016-5

R.T.: 6.287 min
 Delta R.T.: 0.002 min
 Response: 21221415
 Conc: 653.61 ng/ml

Instrument : ECD_P
 ClientSampleId : TG-S02MSD

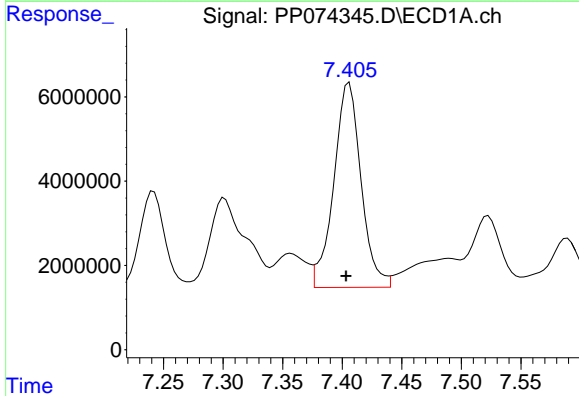
Manual Integrations
 APPROVED

Reviewed By :Yogesh Patel 08/14/2025
 Supervised By :mohammad ahmed 08/18/2025



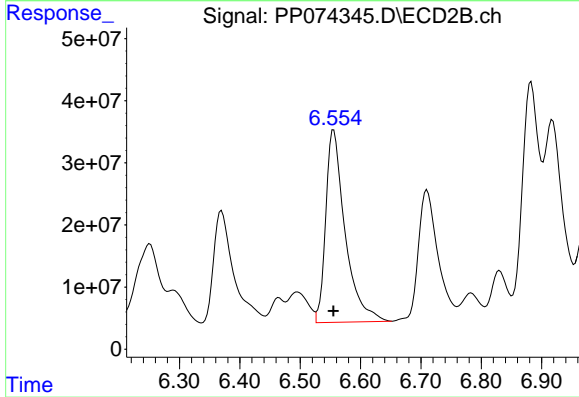
#7 AR-1016-5

R.T.: 5.339 min
 Delta R.T.: 0.000 min
 Response: 69778245
 Conc: 596.58 ng/ml



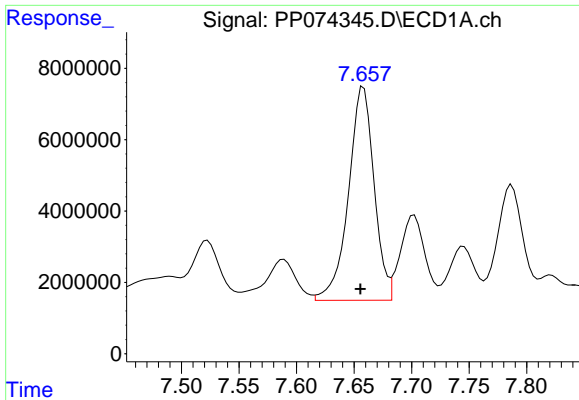
#31 AR-1260-1

R.T.: 7.406 min
 Delta R.T.: 0.003 min
 Response: 77444421
 Conc: 1374.20 ng/ml



#31 AR-1260-1

R.T.: 6.555 min
 Delta R.T.: 0.000 min
 Response: 692220819
 Conc: 1713.60 ng/ml



#32 AR-1260-2

R.T.: 7.658 min
 Delta R.T.: 0.003 min
 Response: 93011734
 Conc: 1364.76 ng/ml

Instrument :

ECD_P

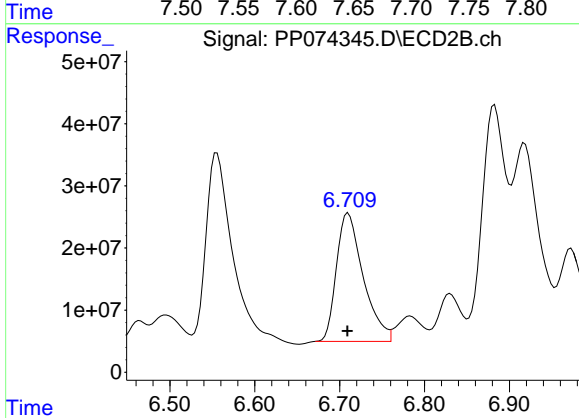
ClientSampleId :

TG-S02MSD

Manual Integrations

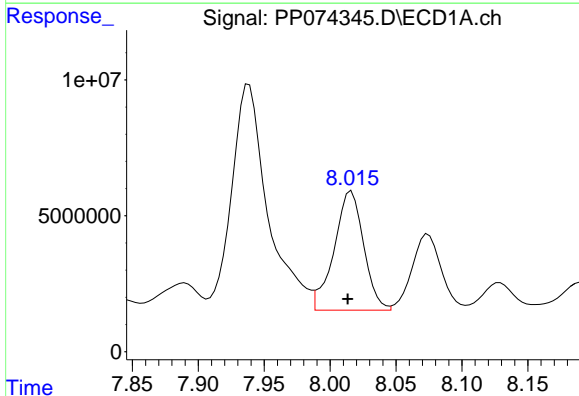
APPROVED

Reviewed By :Yogesh Patel 08/14/2025
 Supervised By :mohammad ahmed 08/18/2025



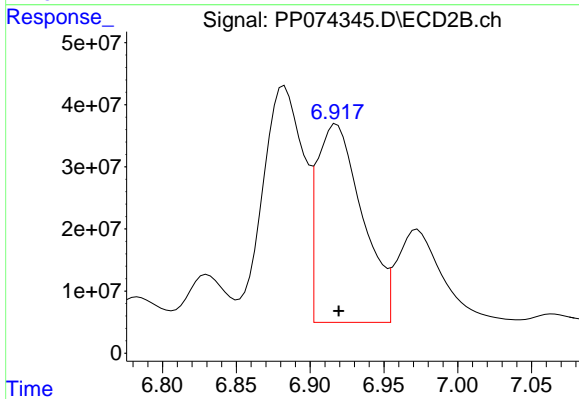
#32 AR-1260-2

R.T.: 6.710 min
 Delta R.T.: 0.000 min
 Response: 453016284
 Conc: 1448.73 ng/ml



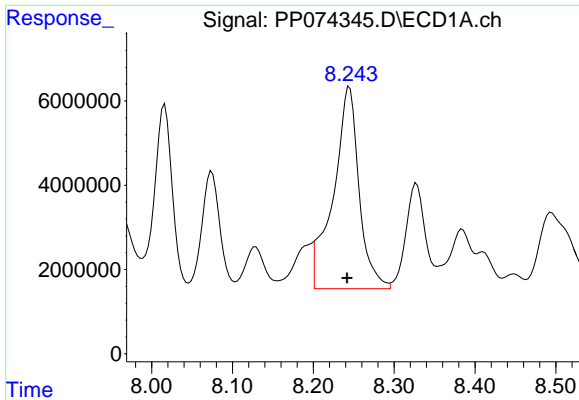
#33 AR-1260-3

R.T.: 8.016 min
 Delta R.T.: 0.003 min
 Response: 68577617
 Conc: 1286.73 ng/ml



#33 AR-1260-3

R.T.: 6.918 min
 Delta R.T.: -0.001 min
 Response: 682435376
 Conc: 1731.55 ng/ml



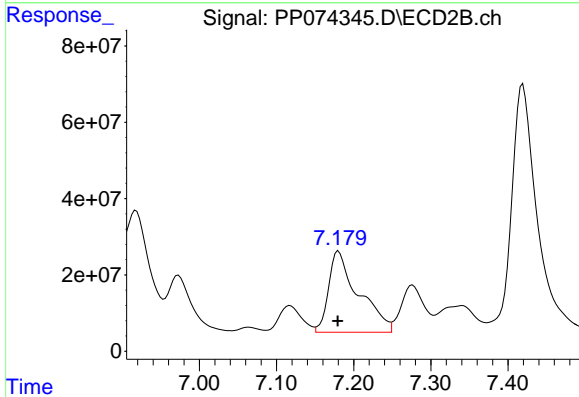
#34 AR-1260-4

R.T.: 8.243 min
 Delta R.T.: 0.002 min
 Response: 105302510
 Conc: 1681.75 ng/ml

Instrument :
 ECD_P
 ClientSampleId :
 TG-S02MSD

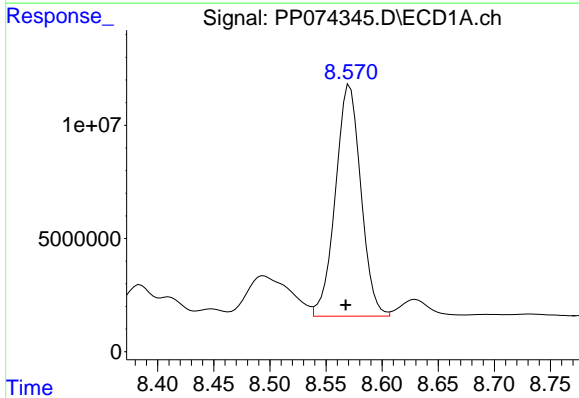
Manual Integrations
 APPROVED

Reviewed By :Yogesh Patel 08/14/2025
 Supervised By :mohammad ahmed 08/18/2025



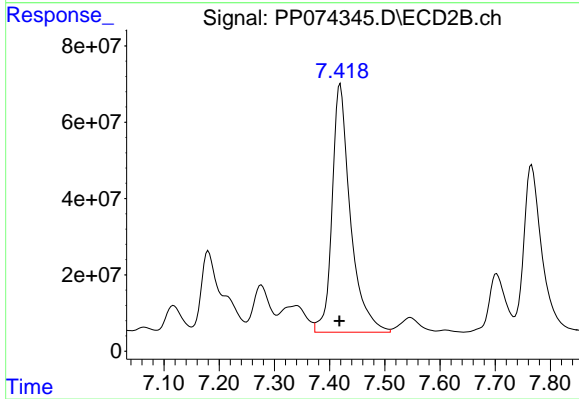
#34 AR-1260-4

R.T.: 7.180 min
 Delta R.T.: 0.001 min
 Response: 573477600
 Conc: 1970.85 ng/ml



#35 AR-1260-5

R.T.: 8.571 min
 Delta R.T.: 0.004 min
 Response: 161271685
 Conc: 1423.34 ng/ml



#35 AR-1260-5

R.T.: 7.419 min
 Delta R.T.: 0.001 min
 Response: 1502178423
 Conc: 1983.31 ng/ml