

Data Path : Z:\pestpcbsrv\HPCHEM1\ECD_P\Data\PP081325\
 Data File : PP074346.D
 Signal(s) : Signal #1: ECD1A.ch Signal #2: ECD2B.ch
 Acq On : 13 Aug 2025 14:32
 Operator : YP\AJ
 Sample : Q2832-05
 Misc :
 ALS Vial : 14 Sample Multiplier: 1

Instrument :
 ECD_P
ClientSampleId :
 TG-S03

Manual Integrations
APPROVED

Reviewed By :Yogesh Patel 08/14/2025
 Supervised By :mohammad ahmed 08/18/2025

Integration File signal 1: autoint1.e
 Integration File signal 2: autoint2.e
 Quant Time: Aug 13 15:45:21 2025
 Quant Method : Z:\pestpcbsrv\HPCHEM1\ECD_P\methods\PP080125.M
 Quant Title : GC EXTRACTABLES
 QLast Update : Mon Aug 04 11:01:49 2025
 Response via : Initial Calibration
 Integrator: ChemStation

Volume Inj. : 2 µl
 Signal #1 Phase : ZB-MR1 Signal #2 Phase: ZB-MR2
 Signal #1 Info : 30Mx0.32mmx 0.50µ Signal #2 Info : 30M x 0.32mm x 0.25µm

Compound	RT#1	RT#2	Resp#1	Resp#2	ng/ml	ng/ml

System Monitoring Compounds						
1) SA Tetrachlo...	4.659	3.803	24689534	108.7E6	22.078m	28.336 #
2) SA Decachlor...	10.444	8.823	21319341	132.4E6	21.952	22.017
Target Compounds						
31) L7 AR-1260-1	7.405	6.554	70086157	637.4E6	1243.631	1577.844 #
32) L7 AR-1260-2	7.658	6.709	88161952	401.5E6	1293.601	1283.864
33) L7 AR-1260-3	8.016	6.916	66345973	638.0E6	1244.860	1618.836 #
34) L7 AR-1260-4	8.244	7.179	114.7E6	518.3E6	1832.549	1781.068
35) L7 AR-1260-5	8.571	7.417	158.3E6	1424.2E6	1397.405	1880.412 #

(f)=RT Delta > 1/2 Window (#)=Amounts differ by > 25% (m)=manual int.

Data Path : Z:\pestpcbsrv\HPCHEM1\ECD_P\Data\PP081325\
 Data File : PP074346.D
 Signal(s) : Signal #1: ECD1A.ch Signal #2: ECD2B.ch
 Acq On : 13 Aug 2025 14:32
 Operator : YP\AJ
 Sample : Q2832-05
 Misc :
 ALS Vial : 14 Sample Multiplier: 1

Instrument :

ECD_P

ClientSampleId :

TG-S03

Manual Integrations

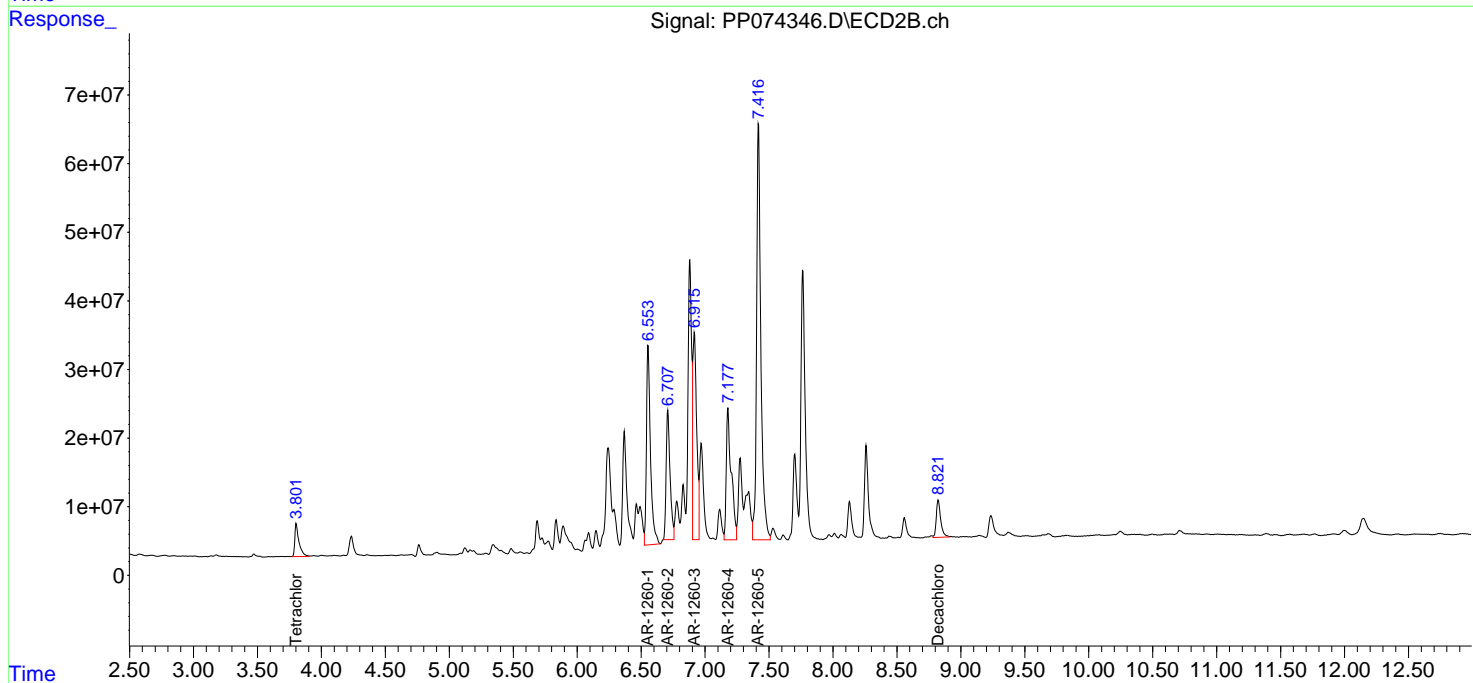
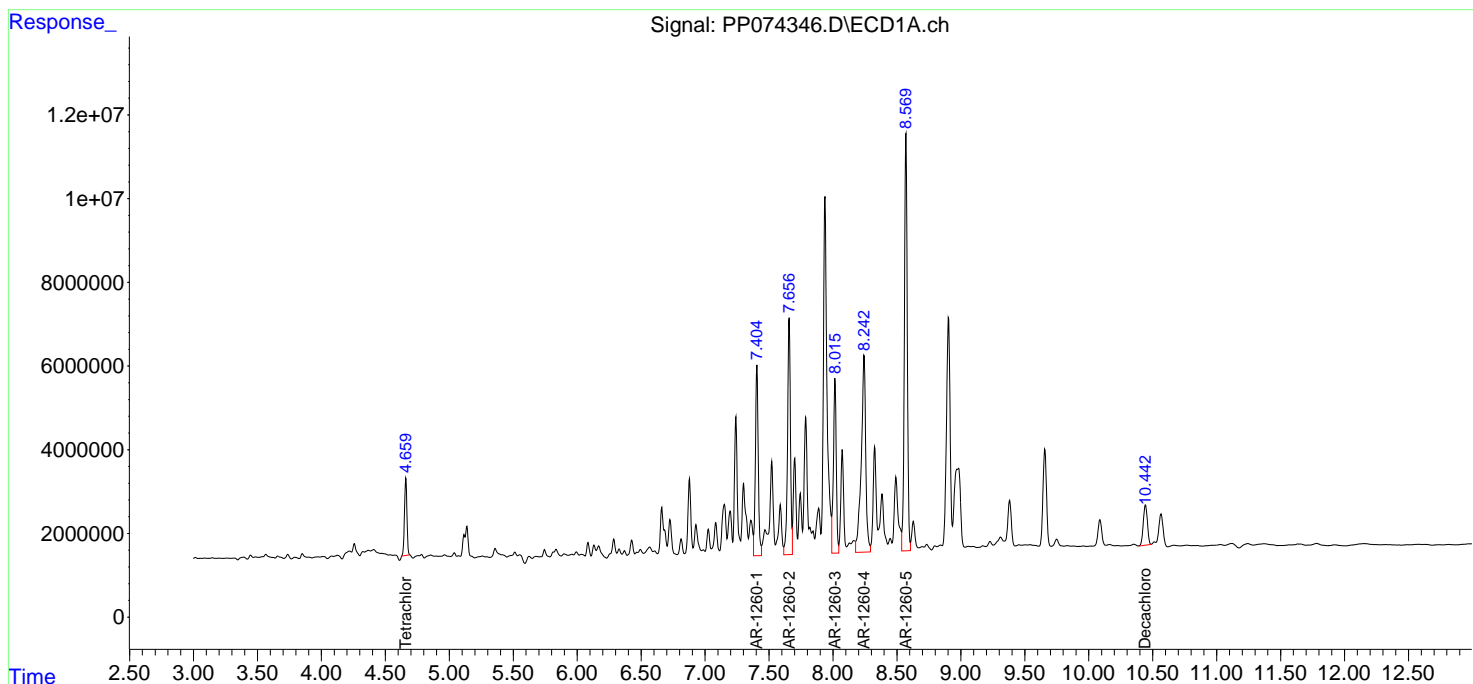
APPROVED

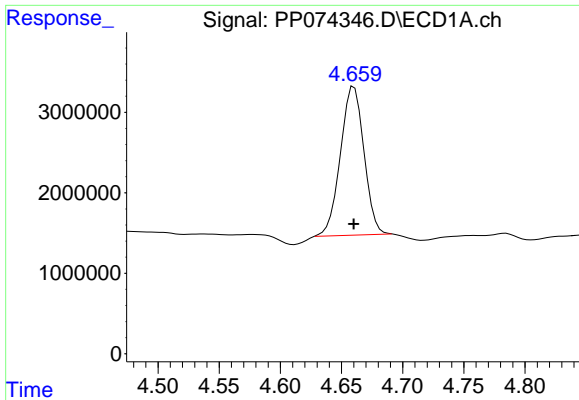
Reviewed By :Yogesh Patel 08/14/2025

Supervised By :mohammad ahmed 08/18/2025

Integration File signal 1: autoint1.e
 Integration File signal 2: autoint2.e
 Quant Time: Aug 13 15:45:21 2025
 Quant Method : Z:\pestpcbsrv\HPCHEM1\ECD_P\methods\PP080125.M
 Quant Title : GC EXTRACTABLES
 QLast Update : Mon Aug 04 11:01:49 2025
 Response via : Initial Calibration
 Integrator: ChemStation

Volume Inj. : 2 µl
 Signal #1 Phase : ZB-MR1 Signal #2 Phase: ZB-MR2
 Signal #1 Info : 30Mx0.32mmx 0.50µ Signal #2 Info : 30M x 0.32mm x 0.25µm

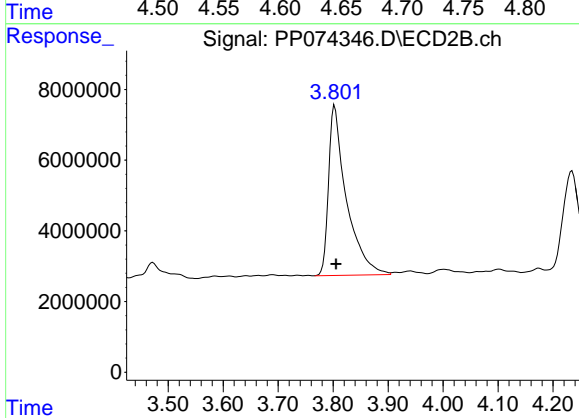




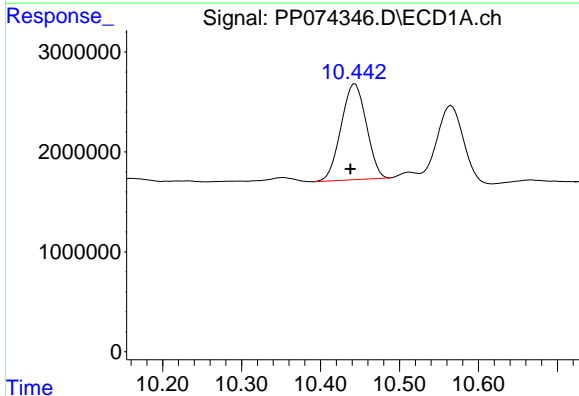
#1 Tetrachloro-m-xylene
 R.T.: 4.659 min
 Delta R.T.: -0.001 min
 Response: 24689534
 Conc: 22.08 ng/ml

Instrument : ECD_P
 Client Sample Id : TG-S03

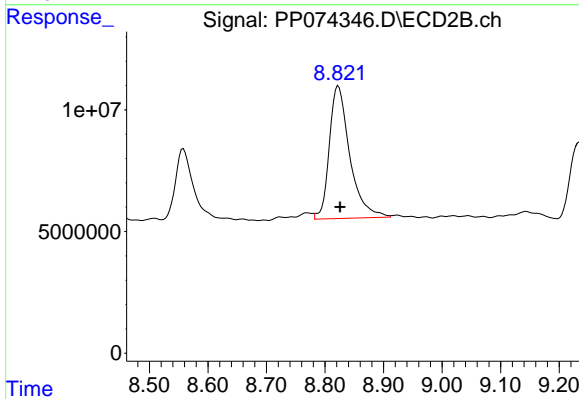
Manual Integrations
APPROVED
 Reviewed By :Yogesh Patel 08/14/2025
 Supervised By :mohammad ahmed 08/18/2025



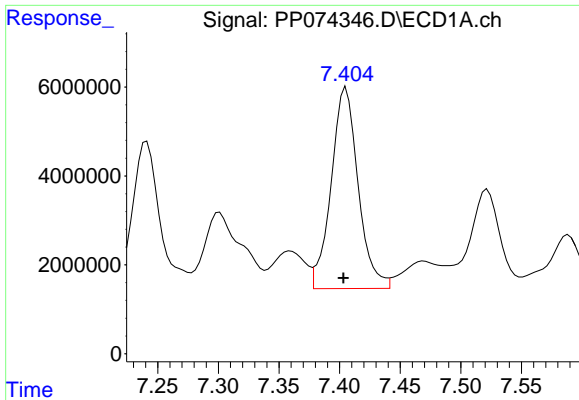
#1 Tetrachloro-m-xylene
 R.T.: 3.803 min
 Delta R.T.: -0.002 min
 Response: 108651540
 Conc: 28.34 ng/ml



#2 Decachlorobiphenyl
 R.T.: 10.444 min
 Delta R.T.: 0.006 min
 Response: 21319341
 Conc: 21.95 ng/ml



#2 Decachlorobiphenyl
 R.T.: 8.823 min
 Delta R.T.: -0.003 min
 Response: 132399507
 Conc: 22.02 ng/ml



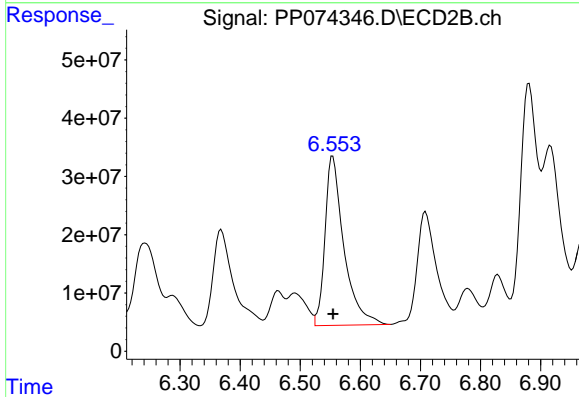
#31 AR-1260-1

R.T.: 7.405 min
 Delta R.T.: 0.002 min
 Response: 70086157
 Conc: 1243.63 ng/ml

Instrument :
 ECD_P
 ClientSampleId :
 TG-S03

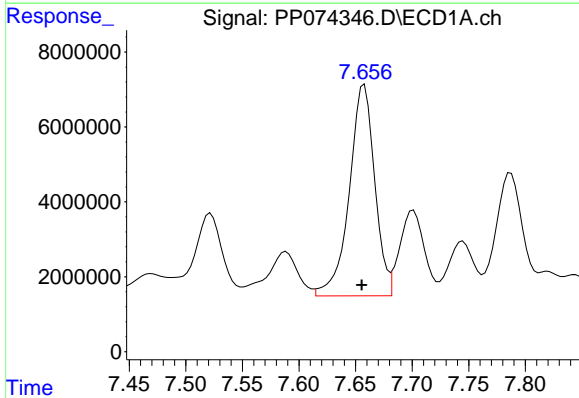
Manual Integrations
 APPROVED

Reviewed By :Yogesh Patel 08/14/2025
 Supervised By :mohammad ahmed 08/18/2025



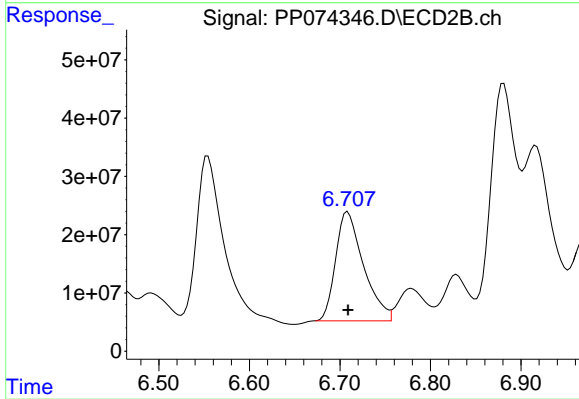
#31 AR-1260-1

R.T.: 6.554 min
 Delta R.T.: 0.000 min
 Response: 637381281
 Conc: 1577.84 ng/ml



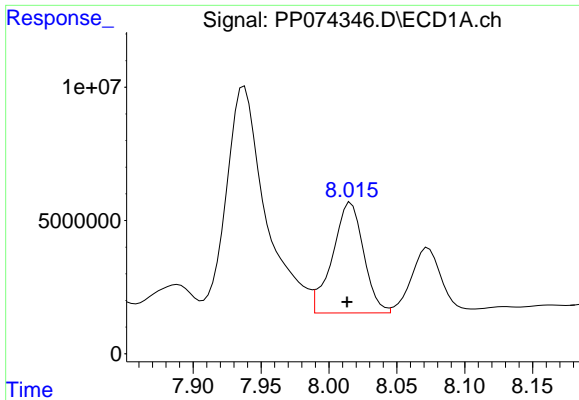
#32 AR-1260-2

R.T.: 7.658 min
 Delta R.T.: 0.002 min
 Response: 88161952
 Conc: 1293.60 ng/ml



#32 AR-1260-2

R.T.: 6.709 min
 Delta R.T.: 0.000 min
 Response: 401462719
 Conc: 1283.86 ng/ml



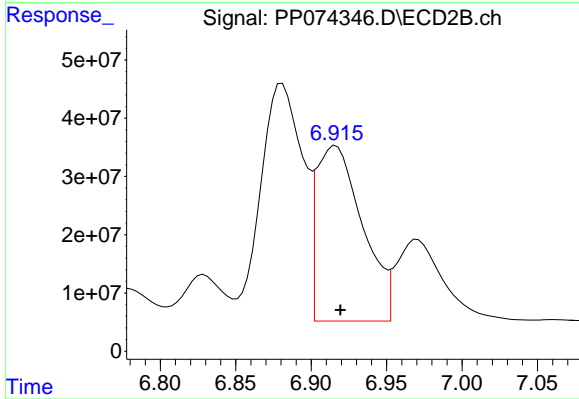
#33 AR-1260-3

R.T.: 8.016 min
 Delta R.T.: 0.003 min
 Response: 66345973
 Conc: 1244.86 ng/ml

Instrument :
 ECD_P
 ClientSampleId :
 TG-S03

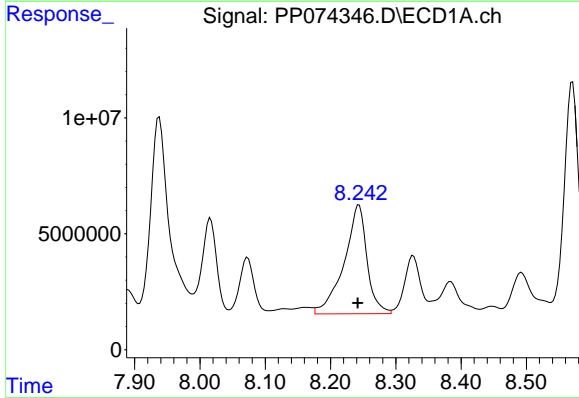
Manual Integrations
 APPROVED

Reviewed By :Yogesh Patel 08/14/2025
 Supervised By :mohammad ahmed 08/18/2025



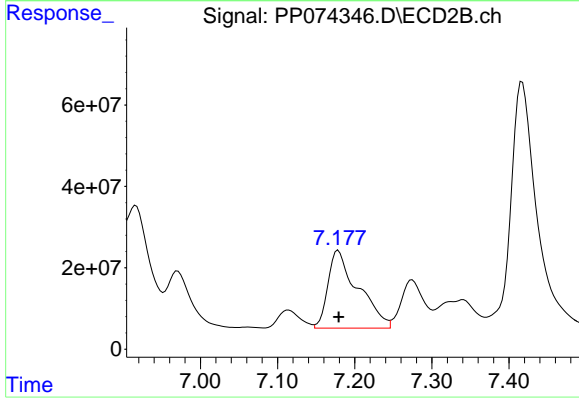
#33 AR-1260-3

R.T.: 6.916 min
 Delta R.T.: -0.003 min
 Response: 638012936
 Conc: 1618.84 ng/ml



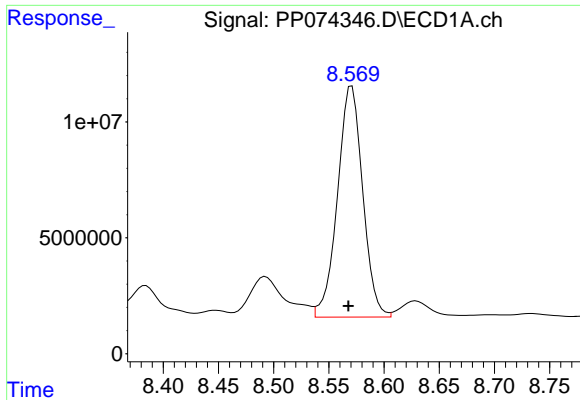
#34 AR-1260-4

R.T.: 8.244 min
 Delta R.T.: 0.002 min
 Response: 114744987
 Conc: 1832.55 ng/ml



#34 AR-1260-4

R.T.: 7.179 min
 Delta R.T.: 0.000 min
 Response: 518254024
 Conc: 1781.07 ng/ml



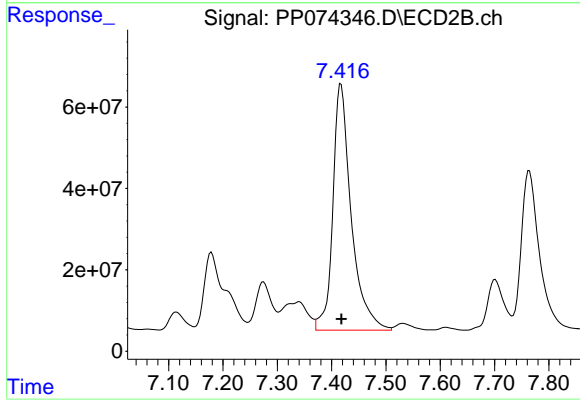
#35 AR-1260-5

R.T.: 8.571 min
 Delta R.T.: 0.003 min
 Response: 158332846
 Conc: 1397.40 ng/ml

Instrument :
 ECD_P
 ClientSampleId :
 TG-S03

Manual Integrations
 APPROVED

Reviewed By :Yogesh Patel 08/14/2025
 Supervised By :mohammad ahmed 08/18/2025



#35 AR-1260-5

R.T.: 7.417 min
 Delta R.T.: 0.000 min
 Response: 1424242438
 Conc: 1880.41 ng/ml