

Data Path : Z:\pestpcbsrv\HPCHEM1\ECD\_P\Data\PP081325\  
 Data File : PP074353.D  
 Signal(s) : Signal #1: ECD1A.ch Signal #2: ECD2B.ch  
 Acq On : 13 Aug 2025 17:15  
 Operator : YP\AJ  
 Sample : PB169224BS  
 Misc :  
 ALS Vial : 17 Sample Multiplier: 1

**Instrument :**  
 ECD\_P  
**ClientSampleId :**  
 PB169224BS

**Manual Integrations**  
**APPROVED**

Reviewed By :Yogesh Patel 08/14/2025  
 Supervised By :mohammad ahmed 08/18/2025

Integration File signal 1: autoint1.e  
 Integration File signal 2: autoint2.e  
 Quant Time: Aug 13 23:59:27 2025  
 Quant Method : Z:\pestpcbsrv\HPCHEM1\ECD\_P\methods\PP080125.M  
 Quant Title : GC EXTRACTABLES  
 QLast Update : Mon Aug 04 11:01:49 2025  
 Response via : Initial Calibration  
 Integrator: ChemStation

Volume Inj. : 2 µl  
 Signal #1 Phase : ZB-MR1 Signal #2 Phase: ZB-MR2  
 Signal #1 Info : 30Mx0.32mmx 0.50µ Signal #2 Info : 30M x 0.32mm x 0.25µm

Compound	RT#1	RT#2	Resp#1	Resp#2	ng/ml	ng/ml
-----						
System Monitoring Compounds						
1) SA Tetrachlo...	4.664	3.807	29534627	90588014	26.410	23.625
2) SA Decachlor...	10.444	8.824	23368219	133.0E6	24.062	22.114
Target Compounds						
3) L1 AR-1016-1	5.816	4.908	22798864	231.1E6	552.609	579.242
4) L1 AR-1016-2	5.838	4.965	33749541	105.7E6	555.624	562.930
5) L1 AR-1016-3	5.901	5.085	22280171	58758494	561.772	553.962
6) L1 AR-1016-4	5.998	5.126	18267001	58997606	561.293	540.172
7) L1 AR-1016-5	6.290	5.340	17480014	64127762	538.376	548.273
31) L7 AR-1260-1	7.407	6.557	30845385	227.9E6	547.330	564.289
32) L7 AR-1260-2	7.660	6.711	35567117	178.6E6	521.876	571.070
33) L7 AR-1260-3	8.018	6.920	23970241	200.0E6	449.757	507.527
34) L7 AR-1260-4	8.245	7.181	29670640	147.5E6	473.859m	506.880
35) L7 AR-1260-5	8.572	7.420	50784218	380.5E6	448.208	502.335

(f)=RT Delta > 1/2 Window (#)=Amounts differ by > 25% (m)=manual int.

Data Path : Z:\pestpcbsrv\HPCHEM1\ECD\_P\Data\PP081325\  
 Data File : PP074353.D  
 Signal(s) : Signal #1: ECD1A.ch Signal #2: ECD2B.ch  
 Acq On : 13 Aug 2025 17:15  
 Operator : YP\AJ  
 Sample : PB169224BS  
 Misc :  
 ALS Vial : 17 Sample Multiplier: 1

**Instrument :**

ECD\_P

**ClientSampleId :**

PB169224BS

**Manual Integrations**

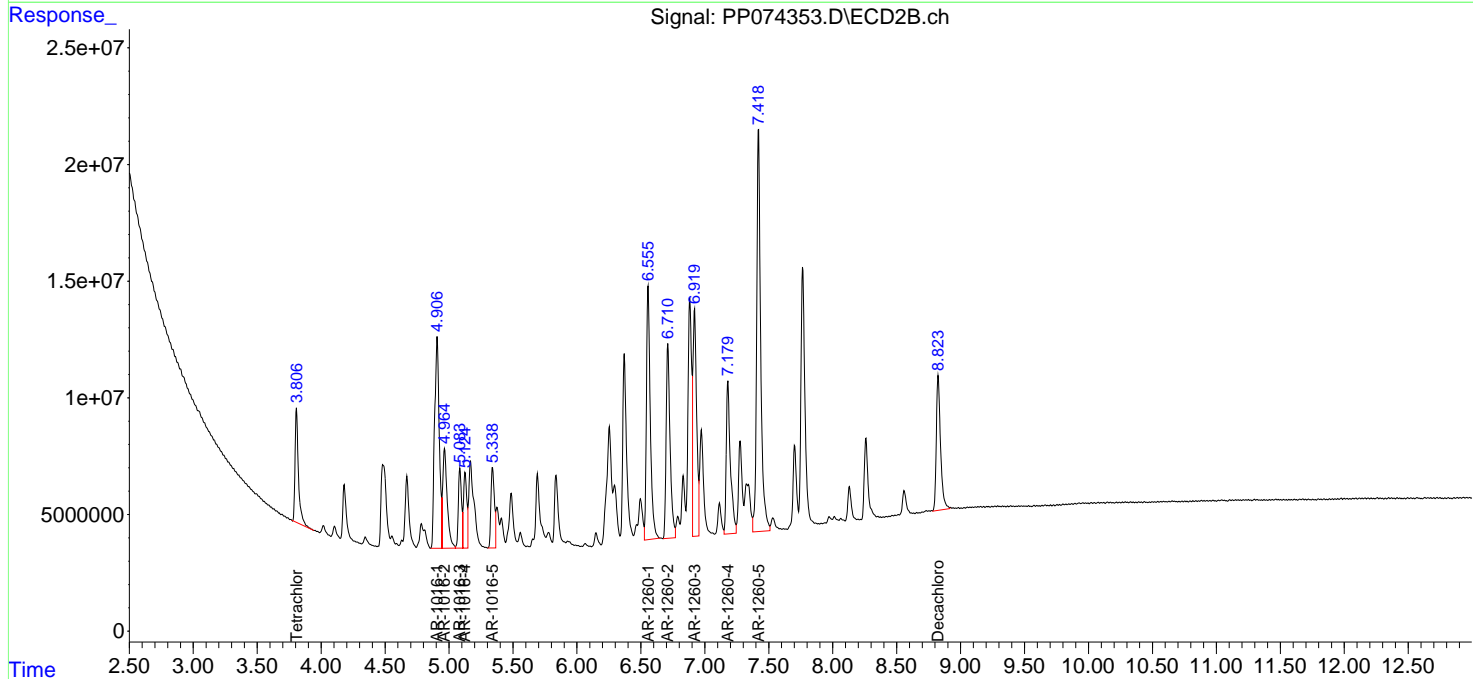
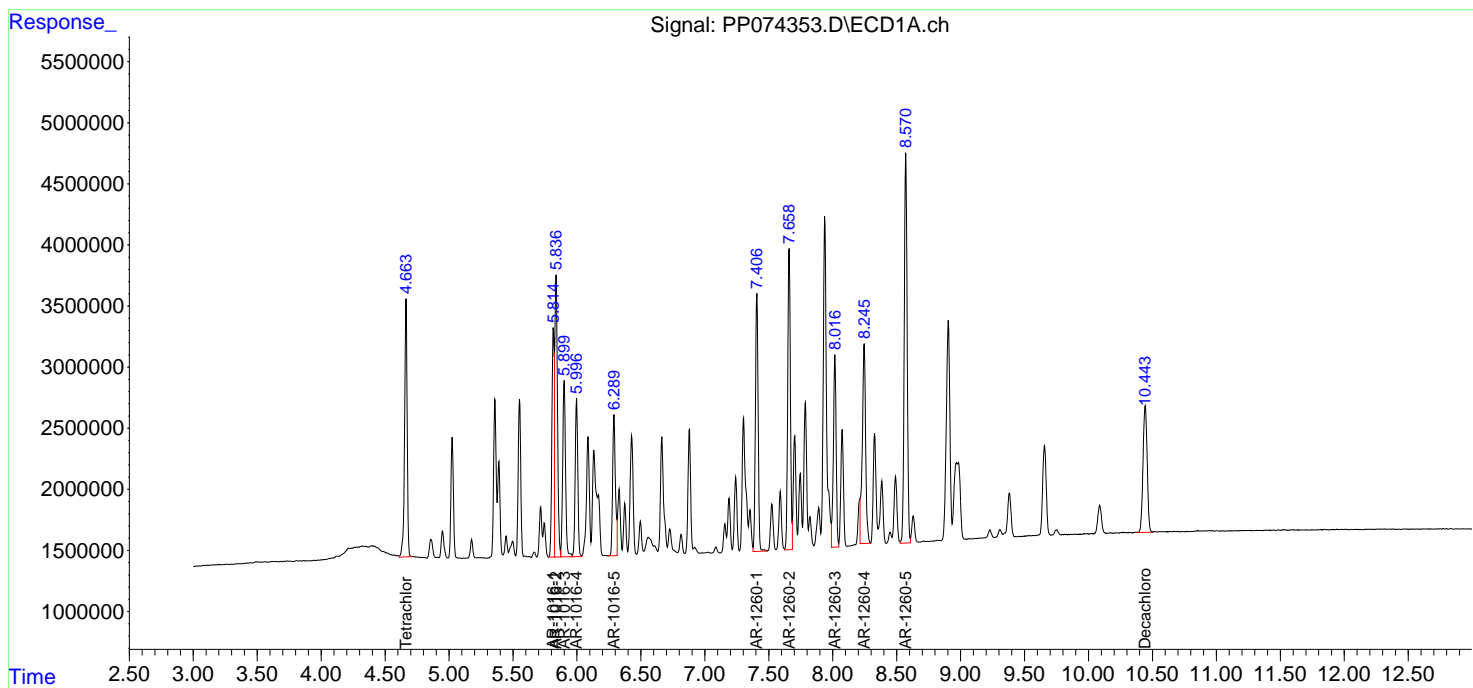
**APPROVED**

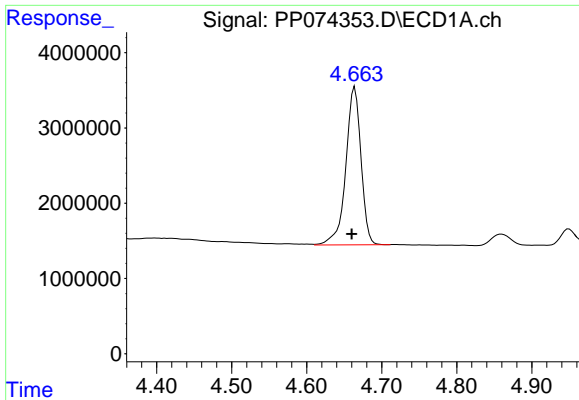
Reviewed By :Yogesh Patel 08/14/2025

Supervised By :mohammad ahmed 08/18/2025

Integration File signal 1: autoint1.e  
 Integration File signal 2: autoint2.e  
 Quant Time: Aug 13 23:59:27 2025  
 Quant Method : Z:\pestpcbsrv\HPCHEM1\ECD\_P\methods\PP080125.M  
 Quant Title : GC EXTRACTABLES  
 QLast Update : Mon Aug 04 11:01:49 2025  
 Response via : Initial Calibration  
 Integrator: ChemStation

Volume Inj. : 2 µl  
 Signal #1 Phase : ZB-MR1 Signal #2 Phase: ZB-MR2  
 Signal #1 Info : 30Mx0.32mmx 0.50µ Signal #2 Info : 30M x 0.32mm x 0.25µm





#1 Tetrachloro-m-xylene

R.T.: 4.664 min  
 Delta R.T.: 0.004 min  
 Response: 29534627  
 Conc: 26.41 ng/ml

Instrument :

ECD\_P

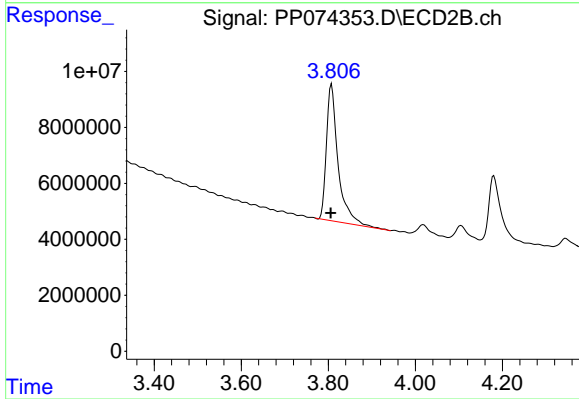
ClientSampleId :

PB169224BS

Manual Integrations

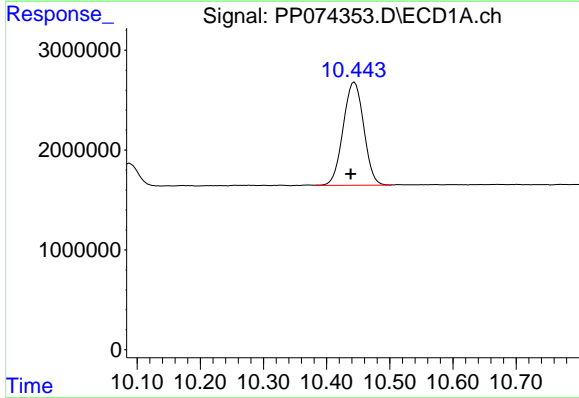
APPROVED

Reviewed By :Yogesh Patel 08/14/2025  
 Supervised By :mohammad ahmed 08/18/2025



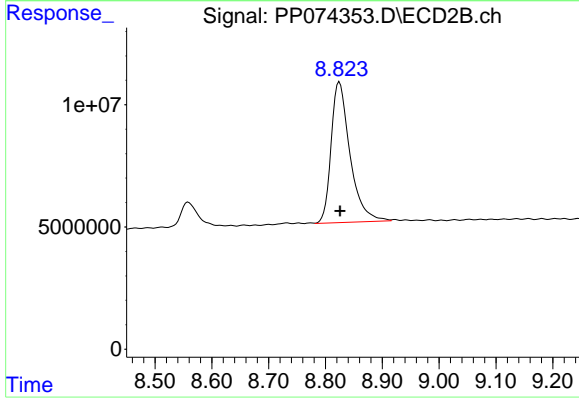
#1 Tetrachloro-m-xylene

R.T.: 3.807 min  
 Delta R.T.: 0.002 min  
 Response: 90588014  
 Conc: 23.62 ng/ml



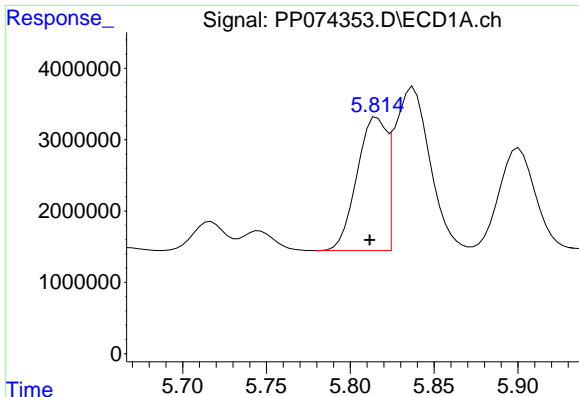
#2 Decachlorobiphenyl

R.T.: 10.444 min  
 Delta R.T.: 0.006 min  
 Response: 23368219  
 Conc: 24.06 ng/ml



#2 Decachlorobiphenyl

R.T.: 8.824 min  
 Delta R.T.: -0.001 min  
 Response: 132988054  
 Conc: 22.11 ng/ml



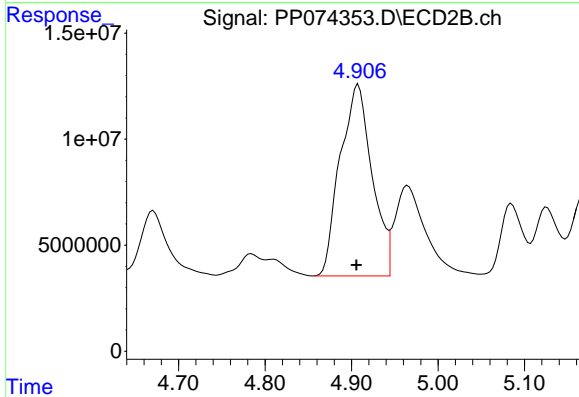
#3 AR-1016-1

R.T.: 5.816 min  
 Delta R.T.: 0.005 min  
 Response: 22798864  
 Conc: 552.61 ng/ml

Instrument :  
 ECD\_P  
 ClientSampleId :  
 PB169224BS

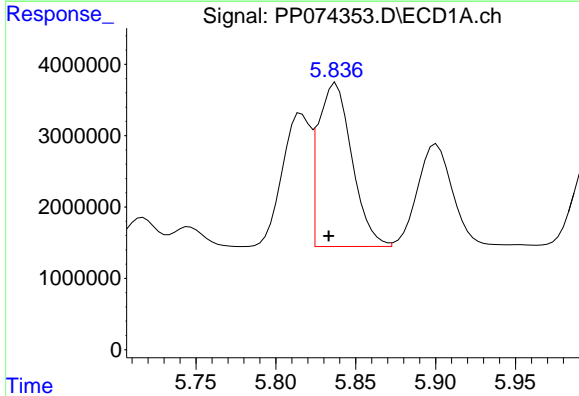
Manual Integrations  
 APPROVED

Reviewed By :Yogesh Patel 08/14/2025  
 Supervised By :mohammad ahmed 08/18/2025



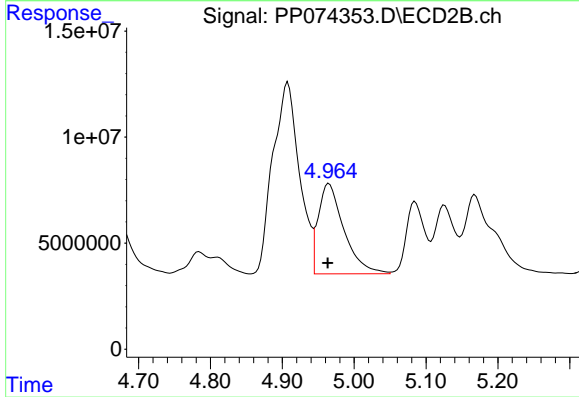
#3 AR-1016-1

R.T.: 4.908 min  
 Delta R.T.: 0.002 min  
 Response: 231052277  
 Conc: 579.24 ng/ml



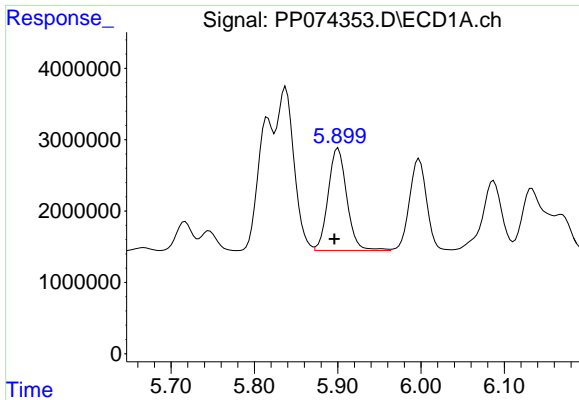
#4 AR-1016-2

R.T.: 5.838 min  
 Delta R.T.: 0.004 min  
 Response: 33749541  
 Conc: 555.62 ng/ml



#4 AR-1016-2

R.T.: 4.965 min  
 Delta R.T.: 0.002 min  
 Response: 105723299  
 Conc: 562.93 ng/ml



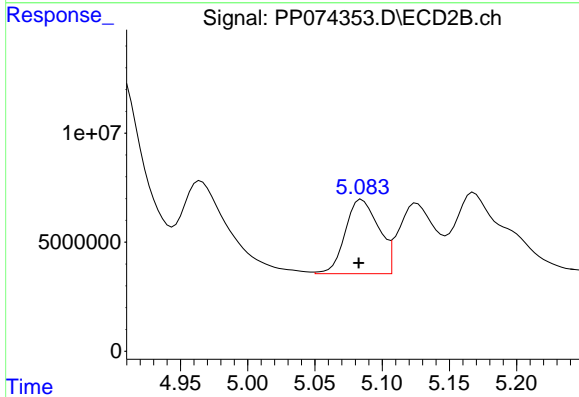
#5 AR-1016-3

R.T.: 5.901 min  
 Delta R.T.: 0.004 min  
 Response: 22280171  
 Conc: 561.77 ng/ml

Instrument : ECD\_P  
 ClientSampleId : PB169224BS

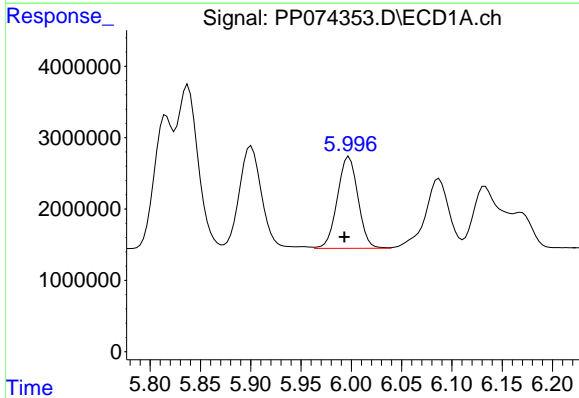
Manual Integrations  
 APPROVED

Reviewed By :Yogesh Patel 08/14/2025  
 Supervised By :mohammad ahmed 08/18/2025



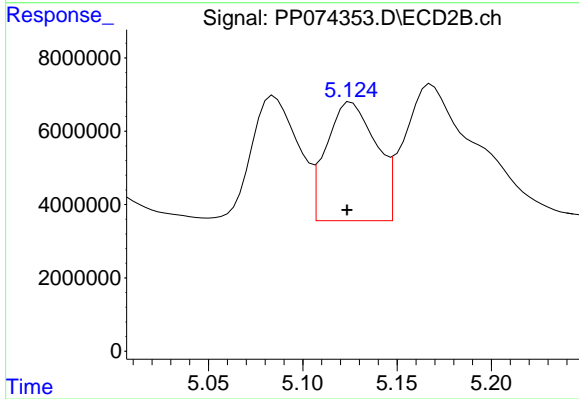
#5 AR-1016-3

R.T.: 5.085 min  
 Delta R.T.: 0.002 min  
 Response: 58758494  
 Conc: 553.96 ng/ml



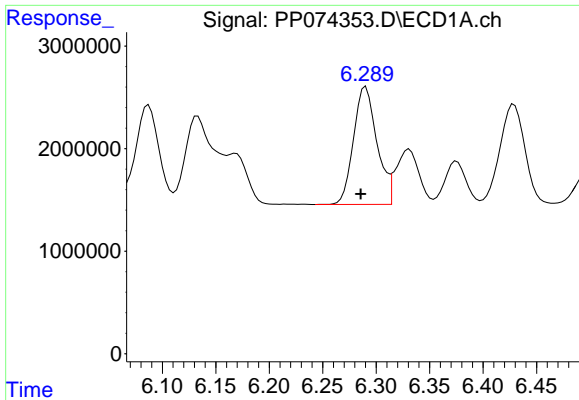
#6 AR-1016-4

R.T.: 5.998 min  
 Delta R.T.: 0.005 min  
 Response: 18267001  
 Conc: 561.29 ng/ml



#6 AR-1016-4

R.T.: 5.126 min  
 Delta R.T.: 0.002 min  
 Response: 58997606  
 Conc: 540.17 ng/ml



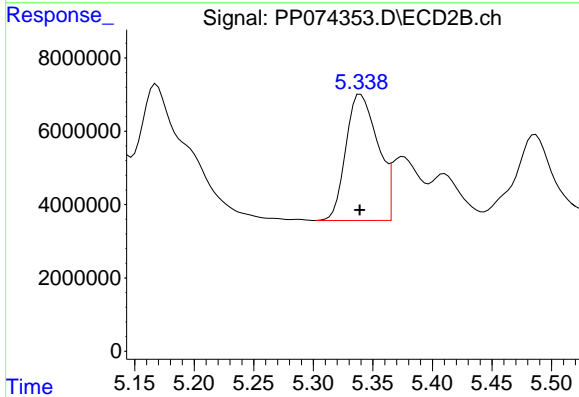
#7 AR-1016-5

R.T.: 6.290 min  
 Delta R.T.: 0.005 min  
 Response: 17480014  
 Conc: 538.38 ng/ml

Instrument :  
 ECD\_P  
 ClientSampleId :  
 PB169224BS

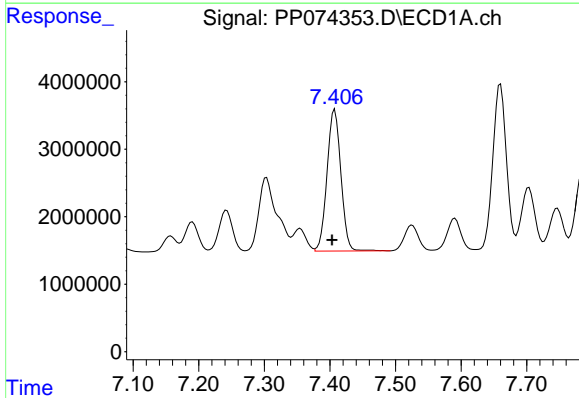
Manual Integrations  
 APPROVED

Reviewed By :Yogesh Patel 08/14/2025  
 Supervised By :mohammad ahmed 08/18/2025



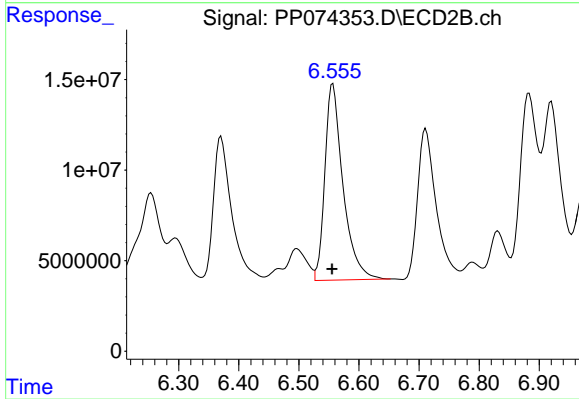
#7 AR-1016-5

R.T.: 5.340 min  
 Delta R.T.: 0.000 min  
 Response: 64127762  
 Conc: 548.27 ng/ml



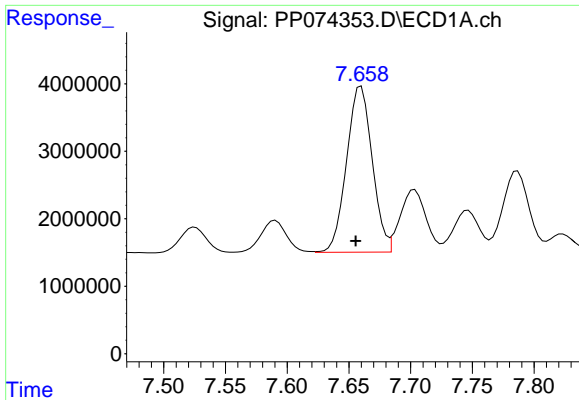
#31 AR-1260-1

R.T.: 7.407 min  
 Delta R.T.: 0.004 min  
 Response: 30845385  
 Conc: 547.33 ng/ml



#31 AR-1260-1

R.T.: 6.557 min  
 Delta R.T.: 0.002 min  
 Response: 227948719  
 Conc: 564.29 ng/ml



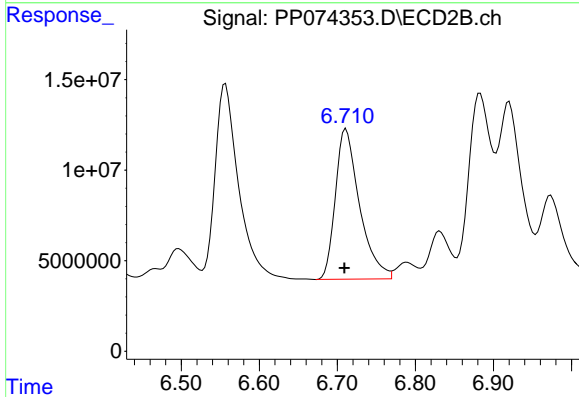
#32 AR-1260-2

R.T.: 7.660 min  
 Delta R.T.: 0.005 min  
 Response: 35567117  
 Conc: 521.88 ng/ml

Instrument :  
 ECD\_P  
 ClientSampleId :  
 PB169224BS

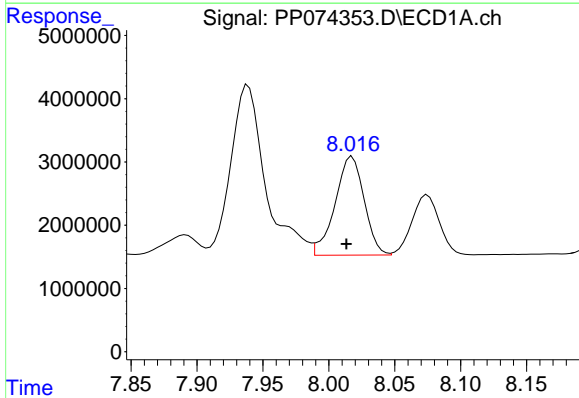
Manual Integrations  
 APPROVED

Reviewed By :Yogesh Patel 08/14/2025  
 Supervised By :mohammad ahmed 08/18/2025



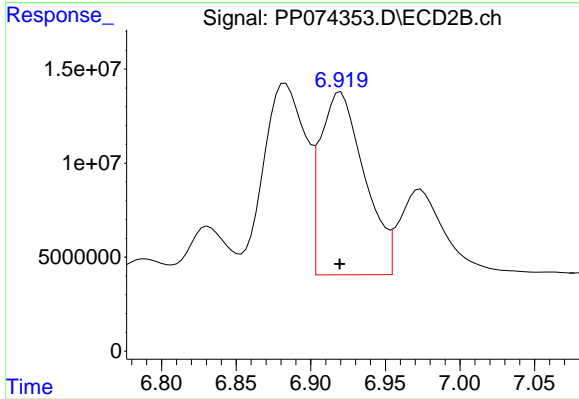
#32 AR-1260-2

R.T.: 6.711 min  
 Delta R.T.: 0.002 min  
 Response: 178572901  
 Conc: 571.07 ng/ml



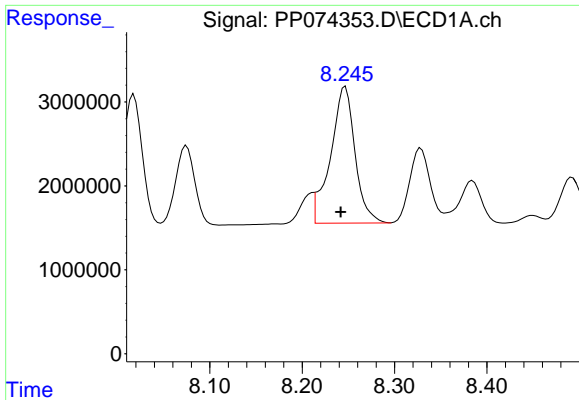
#33 AR-1260-3

R.T.: 8.018 min  
 Delta R.T.: 0.004 min  
 Response: 23970241  
 Conc: 449.76 ng/ml



#33 AR-1260-3

R.T.: 6.920 min  
 Delta R.T.: 0.000 min  
 Response: 200025753  
 Conc: 507.53 ng/ml



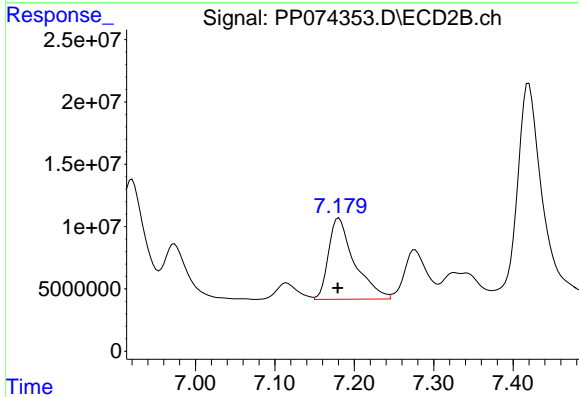
#34 AR-1260-4

R.T.: 8.245 min  
 Delta R.T.: 0.004 min  
 Response: 29670640  
 Conc: 473.86 ng/ml

Instrument :  
 ECD\_P  
 ClientSampleId :  
 PB169224BS

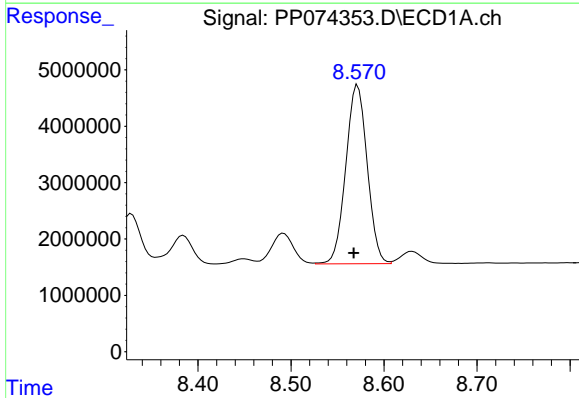
Manual Integrations  
 APPROVED

Reviewed By :Yogesh Patel 08/14/2025  
 Supervised By :mohammad ahmed 08/18/2025



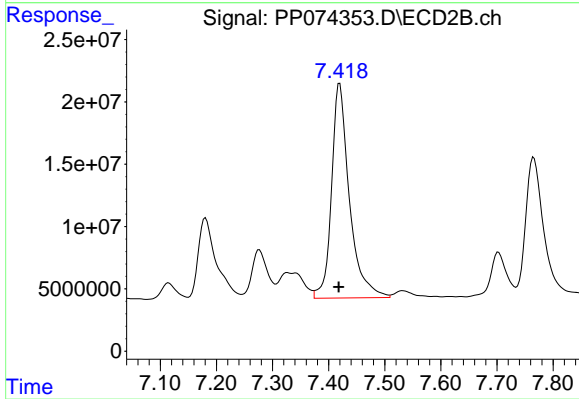
#34 AR-1260-4

R.T.: 7.181 min  
 Delta R.T.: 0.001 min  
 Response: 147491712  
 Conc: 506.88 ng/ml



#35 AR-1260-5

R.T.: 8.572 min  
 Delta R.T.: 0.004 min  
 Response: 50784218  
 Conc: 448.21 ng/ml



#35 AR-1260-5

R.T.: 7.420 min  
 Delta R.T.: 0.002 min  
 Response: 380473539  
 Conc: 502.34 ng/ml