

Data Path : Z:\pestpcbsrv\HPCHEM1\ECD_P\Data\PP081325\
 Data File : PP074361.D
 Signal(s) : Signal #1: ECD1A.ch Signal #2: ECD2B.ch
 Acq On : 13 Aug 2025 19:25
 Operator : YP\AJ
 Sample : Q2822-01
 Misc :
 ALS Vial : 25 Sample Multiplier: 1

Instrument :
 ECD_P
ClientSampleId :
 NWB-2185

Manual Integrations
APPROVED

Reviewed By :Yogesh Patel 08/14/2025
 Supervised By :mohammad ahmed 08/18/2025

Integration File signal 1: autoint1.e
 Integration File signal 2: autoint2.e
 Quant Time: Aug 14 00:01:55 2025
 Quant Method : Z:\pestpcbsrv\HPCHEM1\ECD_P\methods\PP080125.M
 Quant Title : GC EXTRACTABLES
 QLast Update : Mon Aug 04 11:01:49 2025
 Response via : Initial Calibration
 Integrator: ChemStation

Volume Inj. : 2 µl
 Signal #1 Phase : ZB-MR1 Signal #2 Phase: ZB-MR2
 Signal #1 Info : 30Mx0.32mmx 0.50µ Signal #2 Info : 30M x 0.32mm x 0.25µm

Compound	RT#1	RT#2	Resp#1	Resp#2	ng/ml	ng/ml

System Monitoring Compounds						
1) SA Tetrachlo...	4.658	3.799	21545120	63289831	19.266	16.506m
2) SA Decachlor...	10.434	8.818	12045827	59087781	12.404	9.826m

Target Compounds

(f)=RT Delta > 1/2 Window (#)=Amounts differ by > 25% (m)=manual int.

Data Path : Z:\pestpcbsrv\HPCHEM1\ECD_P\Data\PP081325\
 Data File : PP074361.D
 Signal(s) : Signal #1: ECD1A.ch Signal #2: ECD2B.ch
 Acq On : 13 Aug 2025 19:25
 Operator : YP\AJ
 Sample : Q2822-01
 Misc :
 ALS Vial : 25 Sample Multiplier: 1

Instrument :

ECD_P

ClientSampleId :

NWB-2185

Manual Integrations

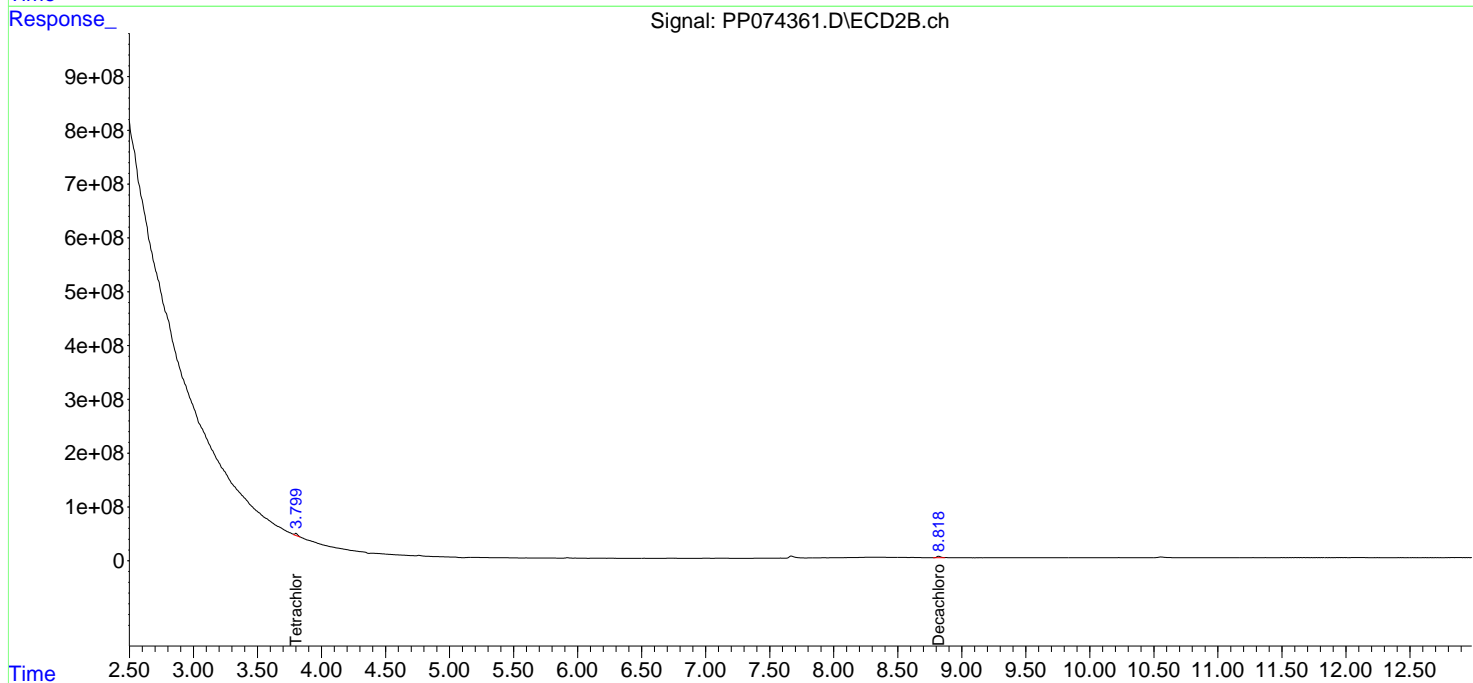
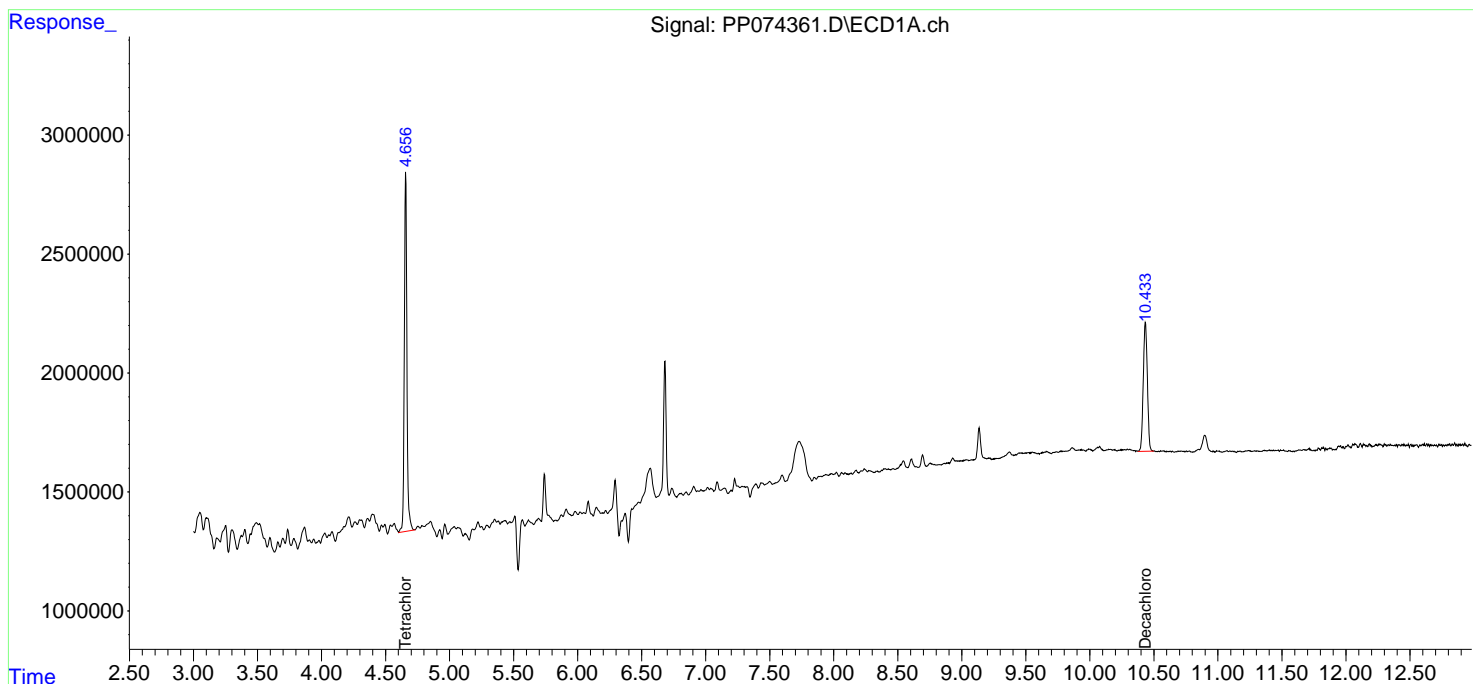
APPROVED

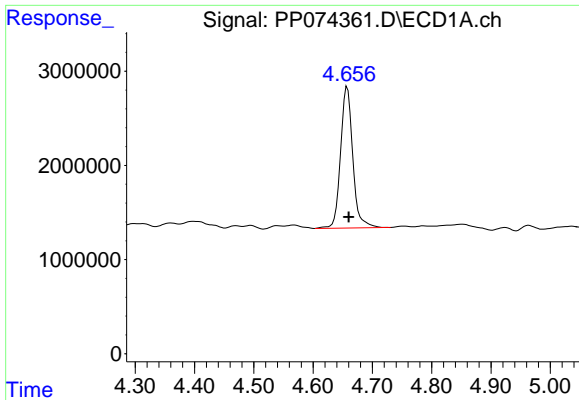
Reviewed By :Yogesh Patel 08/14/2025

Supervised By :mohammad ahmed 08/18/2025

Integration File signal 1: autoint1.e
 Integration File signal 2: autoint2.e
 Quant Time: Aug 14 00:01:55 2025
 Quant Method : Z:\pestpcbsrv\HPCHEM1\ECD_P\methods\PP080125.M
 Quant Title : GC EXTRACTABLES
 QLast Update : Mon Aug 04 11:01:49 2025
 Response via : Initial Calibration
 Integrator: ChemStation

Volume Inj. : 2 µl
 Signal #1 Phase : ZB-MR1 Signal #2 Phase: ZB-MR2
 Signal #1 Info : 30Mx0.32mmx 0.50µ Signal #2 Info : 30M x 0.32mm x 0.25µm



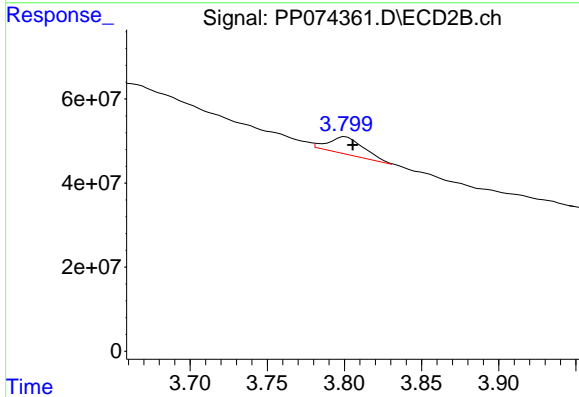


#1 Tetrachloro-m-xylene
 R.T.: 4.658 min
 Delta R.T.: -0.002 min
 Response: 21545120
 Conc: 19.27 ng/ml

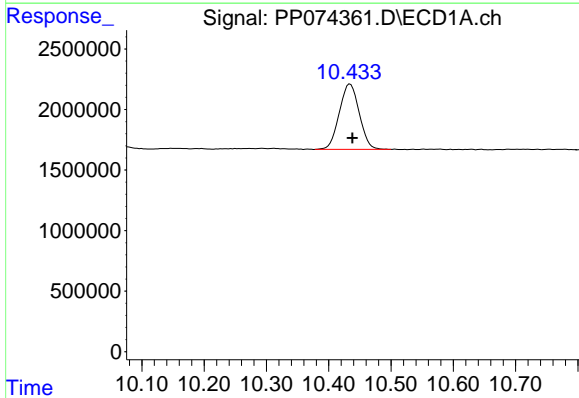
Instrument :
 ECD_P
 ClientSampleId :
 NWB-2185

Manual Integrations
 APPROVED

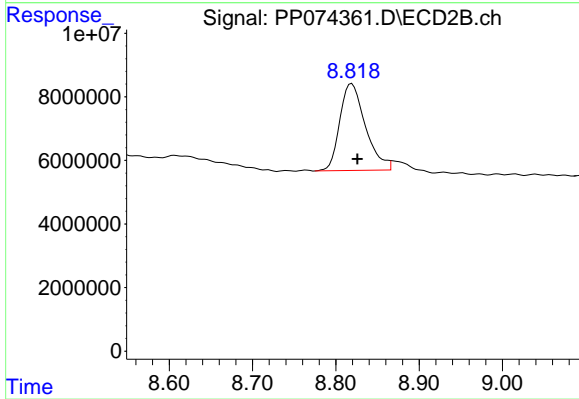
Reviewed By :Yogesh Patel 08/14/2025
 Supervised By :mohammad ahmed 08/18/2025



#1 Tetrachloro-m-xylene
 R.T.: 3.799 min
 Delta R.T.: -0.006 min
 Response: 63289831
 Conc: 16.51 ng/ml m



#2 Decachlorobiphenyl
 R.T.: 10.434 min
 Delta R.T.: -0.004 min
 Response: 12045827
 Conc: 12.40 ng/ml



#2 Decachlorobiphenyl
 R.T.: 8.818 min
 Delta R.T.: -0.008 min
 Response: 59087781
 Conc: 9.83 ng/ml m