

Data Path : Z:\pestpcbsrv\HPCHEM1\ECD_P\Data\PP081325\
 Data File : PP074363.D
 Signal(s) : Signal #1: ECD1A.ch Signal #2: ECD2B.ch
 Acq On : 13 Aug 2025 21:19
 Operator : YP\AJ
 Sample : AR1242CCC500
 Misc :
 ALS Vial : 4 Sample Multiplier: 1

Instrument :
 ECD_P
ClientSampleId :
 AR1242CCC500

Manual Integrations
APPROVED
 Reviewed By :Yogesh Patel 08/14/2025
 Supervised By :mohammad ahmed 08/18/2025

Integration File signal 1: autoint1.e
 Integration File signal 2: autoint2.e
 Quant Time: Aug 14 00:02:30 2025
 Quant Method : Z:\pestpcbsrv\HPCHEM1\ECD_P\methods\PP080125.M
 Quant Title : GC EXTRACTABLES
 QLast Update : Mon Aug 04 11:01:49 2025
 Response via : Initial Calibration
 Integrator: ChemStation

Volume Inj. : 2 µl
 Signal #1 Phase : ZB-MR1 Signal #2 Phase: ZB-MR2
 Signal #1 Info : 30Mx0.32mmx 0.50µ Signal #2 Info : 30M x 0.32mm x 0.25µm

Compound	RT#1	RT#2	Resp#1	Resp#2	ng/ml	ng/ml

System Monitoring Compounds						
1) SA Tetrachlo...	4.659	3.802	56345125	206.6E6	50.384	53.891
2) SA Decachlor...	10.436	8.821	44389821	291.8E6	45.708	48.523
Target Compounds						
16) L4 AR-1242-1	5.810	4.902	17522460	177.6E6	470.202	514.482
17) L4 AR-1242-2	5.831	4.960	25549368	84454984	469.580	516.931
18) L4 AR-1242-3	5.895	5.081	17255204	48321200	482.854	523.815
19) L4 AR-1242-4	5.992	5.162	14002068	60129312	479.217	503.504m
20) L4 AR-1242-5	6.721	5.685	15754017	76122604	443.051	508.977

(f)=RT Delta > 1/2 Window (#)=Amounts differ by > 25% (m)=manual int.

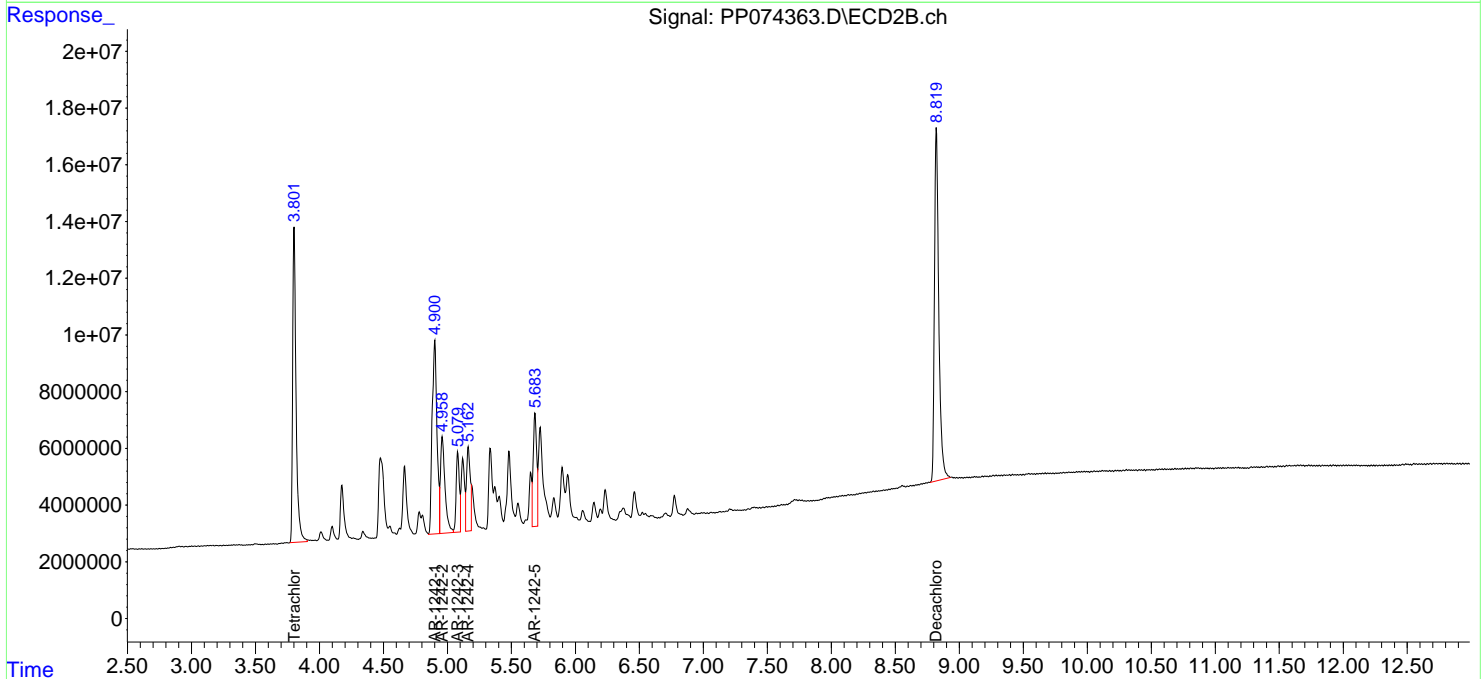
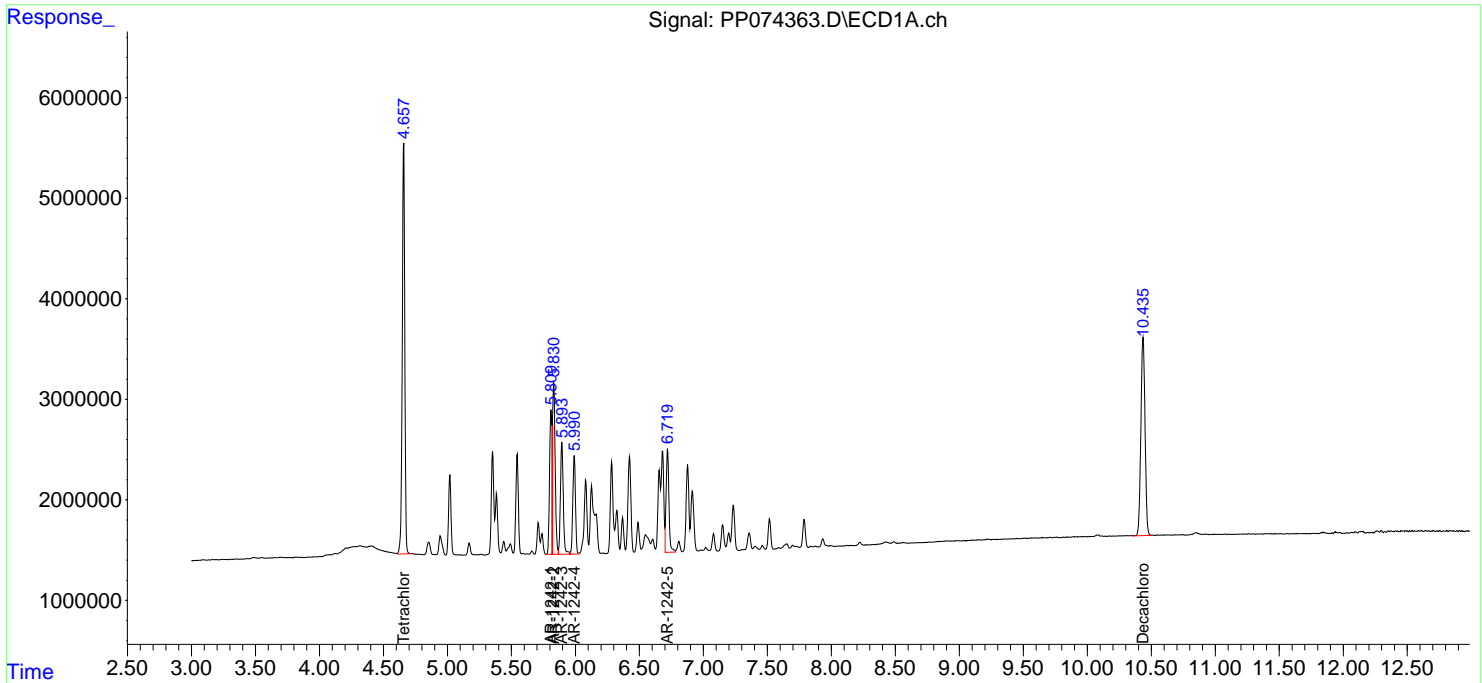
Data Path : Z:\pestpcbsrv\HPCHEM1\ECD_P\Data\PP081325\
 Data File : PP074363.D
 Signal(s) : Signal #1: ECD1A.ch Signal #2: ECD2B.ch
 Acq On : 13 Aug 2025 21:19
 Operator : YP\AJ
 Sample : AR1242CCC500
 Misc :
 ALS Vial : 4 Sample Multiplier: 1

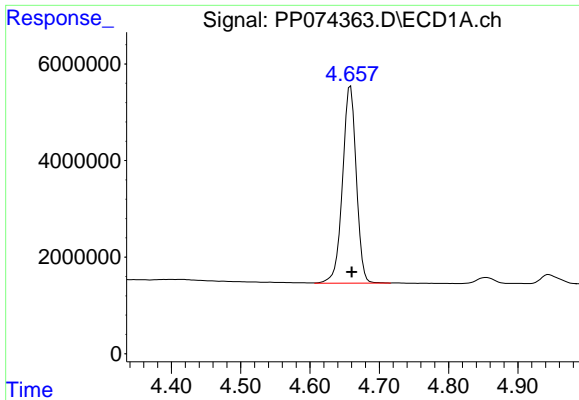
Instrument :
 ECD_P
ClientSampleId :
 AR1242CCC500

Manual Integrations
APPROVED
 Reviewed By :Yogesh Patel 08/14/2025
 Supervised By :mohammad ahmed 08/18/2025

Integration File signal 1: autoint1.e
 Integration File signal 2: autoint2.e
 Quant Time: Aug 14 00:02:30 2025
 Quant Method : Z:\pestpcbsrv\HPCHEM1\ECD_P\methods\PP080125.M
 Quant Title : GC EXTRACTABLES
 QLast Update : Mon Aug 04 11:01:49 2025
 Response via : Initial Calibration
 Integrator: ChemStation

Volume Inj. : 2 µl
 Signal #1 Phase : ZB-MR1 Signal #2 Phase: ZB-MR2
 Signal #1 Info : 30Mx0.32mmx 0.50µ Signal #2 Info : 30M x 0.32mm x 0.25µm

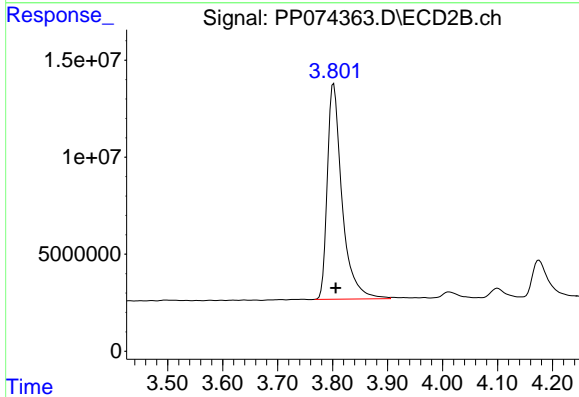




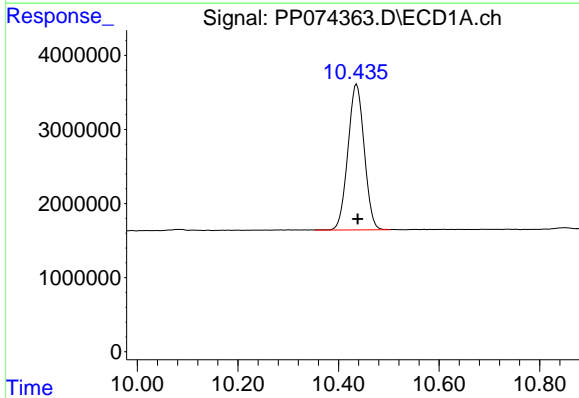
#1 Tetrachloro-m-xylene
 R.T.: 4.659 min
 Delta R.T.: -0.002 min
 Response: 56345125
 Conc: 50.38 ng/ml

Instrument :
 ECD_P
 ClientSampleId :
 AR1242CCC500

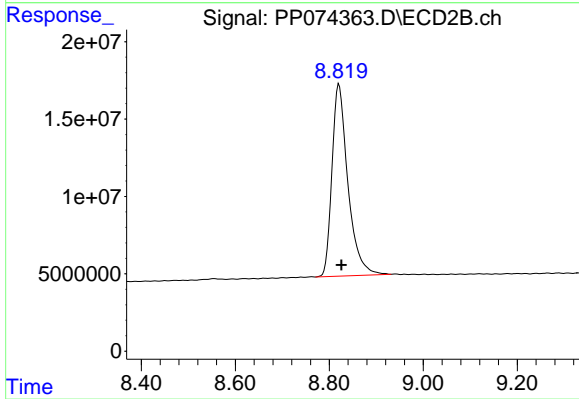
Manual Integrations
APPROVED
 Reviewed By :Yogesh Patel 08/14/2025
 Supervised By :mohammad ahmed 08/18/2025



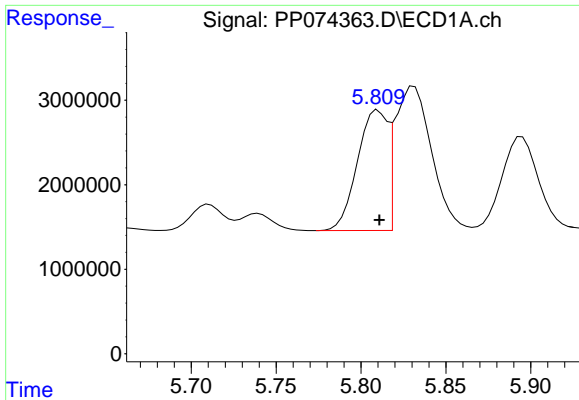
#1 Tetrachloro-m-xylene
 R.T.: 3.802 min
 Delta R.T.: -0.003 min
 Response: 206640355
 Conc: 53.89 ng/ml



#2 Decachlorobiphenyl
 R.T.: 10.436 min
 Delta R.T.: -0.002 min
 Response: 44389821
 Conc: 45.71 ng/ml



#2 Decachlorobiphenyl
 R.T.: 8.821 min
 Delta R.T.: -0.005 min
 Response: 291799115
 Conc: 48.52 ng/ml



#16 AR-1242-1

R.T.: 5.810 min
 Delta R.T.: 0.000 min
 Response: 17522460
 Conc: 470.20 ng/ml

Instrument :

ECD_P

ClientSampleId :

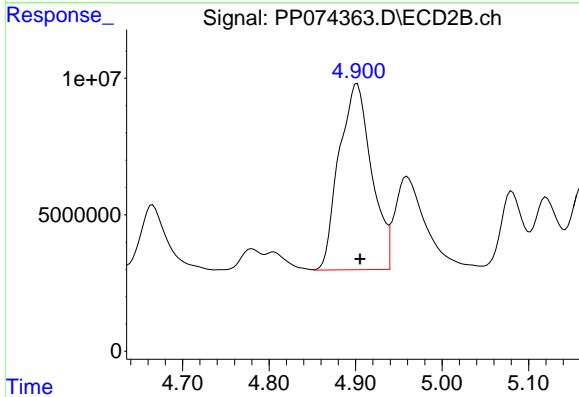
AR1242CCC500

Manual Integrations

APPROVED

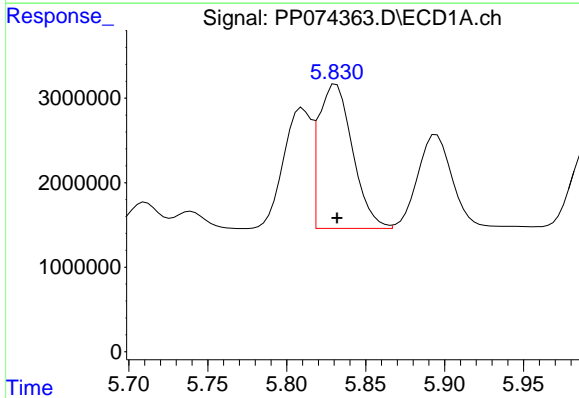
Reviewed By :Yogesh Patel 08/14/2025

Supervised By :mohammad ahmed 08/18/2025



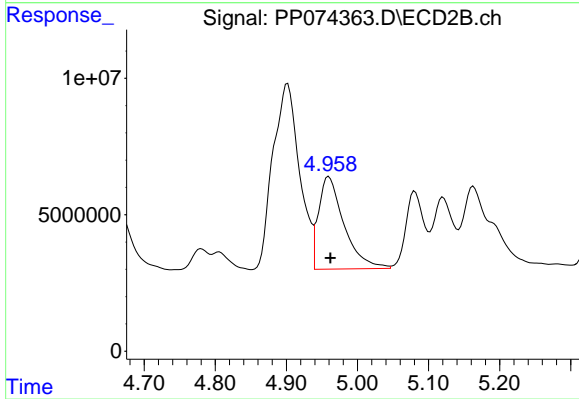
#16 AR-1242-1

R.T.: 4.902 min
 Delta R.T.: -0.003 min
 Response: 177568715
 Conc: 514.48 ng/ml



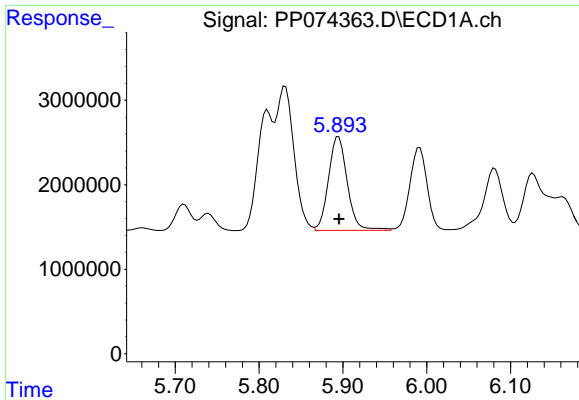
#17 AR-1242-2

R.T.: 5.831 min
 Delta R.T.: 0.000 min
 Response: 25549368
 Conc: 469.58 ng/ml



#17 AR-1242-2

R.T.: 4.960 min
 Delta R.T.: -0.002 min
 Response: 84454984
 Conc: 516.93 ng/ml



#18 AR-1242-3

R.T.: 5.895 min
 Delta R.T.: 0.000 min
 Response: 17255204
 Conc: 482.85 ng/ml

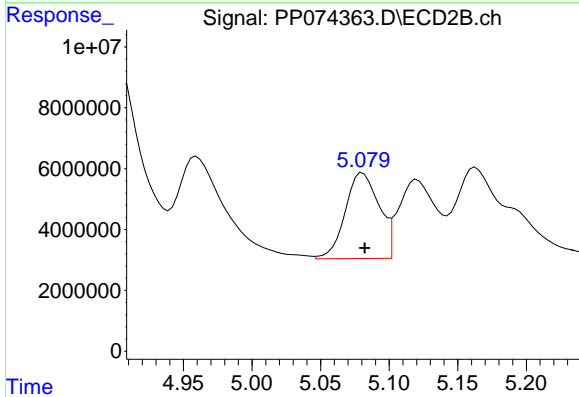
Instrument :

ECD_P

ClientSampleId :
 AR1242CCC500

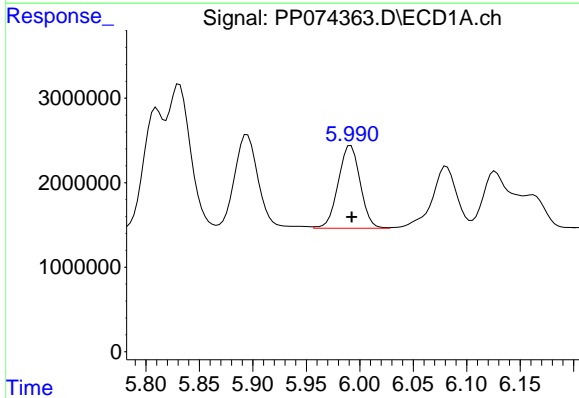
Manual Integrations
 APPROVED

Reviewed By :Yogesh Patel 08/14/2025
 Supervised By :mohammad ahmed 08/18/2025



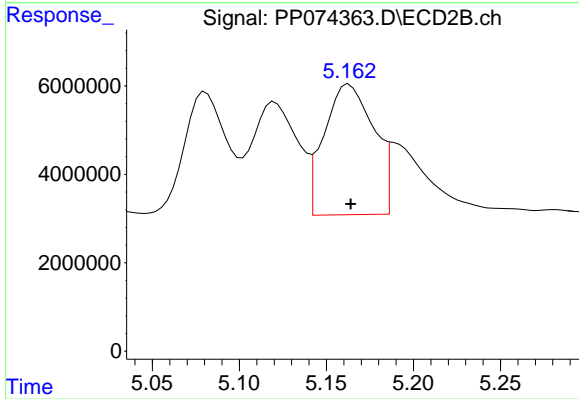
#18 AR-1242-3

R.T.: 5.081 min
 Delta R.T.: -0.001 min
 Response: 48321200
 Conc: 523.82 ng/ml



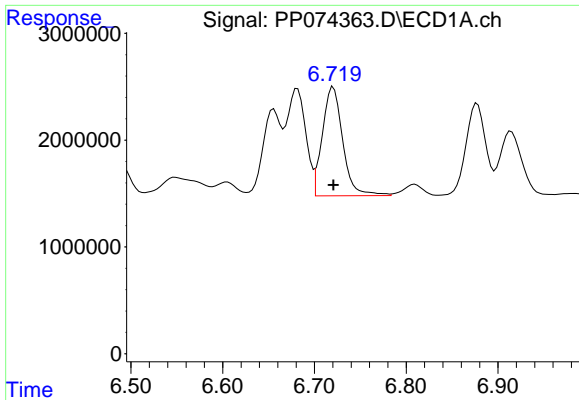
#19 AR-1242-4

R.T.: 5.992 min
 Delta R.T.: 0.000 min
 Response: 14002068
 Conc: 479.22 ng/ml



#19 AR-1242-4

R.T.: 5.162 min
 Delta R.T.: -0.002 min
 Response: 60129312
 Conc: 503.50 ng/ml m



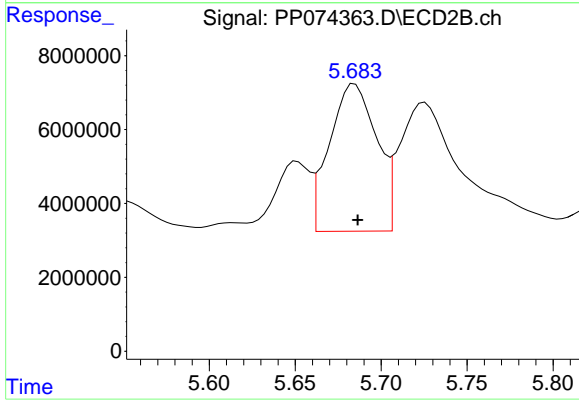
#20 AR-1242-5

R.T.: 6.721 min
 Delta R.T.: 0.000 min
 Response: 15754017
 Conc: 443.05 ng/ml

Instrument :
 ECD_P
 ClientSampleId :
 AR1242CCC500

Manual Integrations
 APPROVED

Reviewed By :Yogesh Patel 08/14/2025
 Supervised By :mohammad ahmed 08/18/2025



#20 AR-1242-5

R.T.: 5.685 min
 Delta R.T.: -0.002 min
 Response: 76122604
 Conc: 508.98 ng/ml