

Data Path : Z:\pestpcbsrv\HPCHEM1\ECD\_P\Data\PP081325\  
 Data File : PP074369.D  
 Signal(s) : Signal #1: ECD1A.ch Signal #2: ECD2B.ch  
 Acq On : 14 Aug 2025 00:18  
 Operator : YP\AJ  
 Sample : AR1242CCC500  
 Misc :  
 ALS Vial : 4 Sample Multiplier: 1

**Instrument :**  
 ECD\_P  
**ClientSampleId :**  
 AR1242CCC500

**Manual Integrations**  
**APPROVED**

Reviewed By :Yogesh Patel 08/14/2025  
 Supervised By :mohammad ahmed 08/18/2025

Integration File signal 1: autoint1.e  
 Integration File signal 2: autoint2.e  
 Quant Time: Aug 14 01:51:06 2025  
 Quant Method : Z:\pestpcbsrv\HPCHEM1\ECD\_P\methods\PP080125.M  
 Quant Title : GC EXTRACTABLES  
 QLast Update : Mon Aug 04 11:01:49 2025  
 Response via : Initial Calibration  
 Integrator: ChemStation

Volume Inj. : 2 µl  
 Signal #1 Phase : ZB-MR1 Signal #2 Phase: ZB-MR2  
 Signal #1 Info : 30Mx0.32mmx 0.50µ Signal #2 Info : 30M x 0.32mm x 0.25µm

Compound	RT#1	RT#2	Resp#1	Resp#2	ng/ml	ng/ml
-----						
System Monitoring Compounds						
1) SA Tetrachlo...	4.661	3.804	56882606	207.4E6	50.865	54.100
2) SA Decachlor...	10.440	8.820	44866323	298.3E6	46.199	49.606
Target Compounds						
16) L4 AR-1242-1	5.812	4.903	17826073	182.7E6	478.349	529.243
17) L4 AR-1242-2	5.834	4.962	25911274	86636737	476.232	530.285
18) L4 AR-1242-3	5.897	5.081	17379154	47986436	486.323	520.187
19) L4 AR-1242-4	5.994	5.163	14301693	63053010	489.471	527.987m
20) L4 AR-1242-5	6.723	5.684	16125786	77333838	453.506	517.076
-----						

(f)=RT Delta > 1/2 Window (#)=Amounts differ by > 25% (m)=manual int.

Data Path : Z:\pestpcbsrv\HPCHEM1\ECD\_P\Data\PP081325\  
 Data File : PP074369.D  
 Signal(s) : Signal #1: ECD1A.ch Signal #2: ECD2B.ch  
 Acq On : 14 Aug 2025 00:18  
 Operator : YP\AJ  
 Sample : AR1242CCC500  
 Misc :  
 ALS Vial : 4 Sample Multiplier: 1

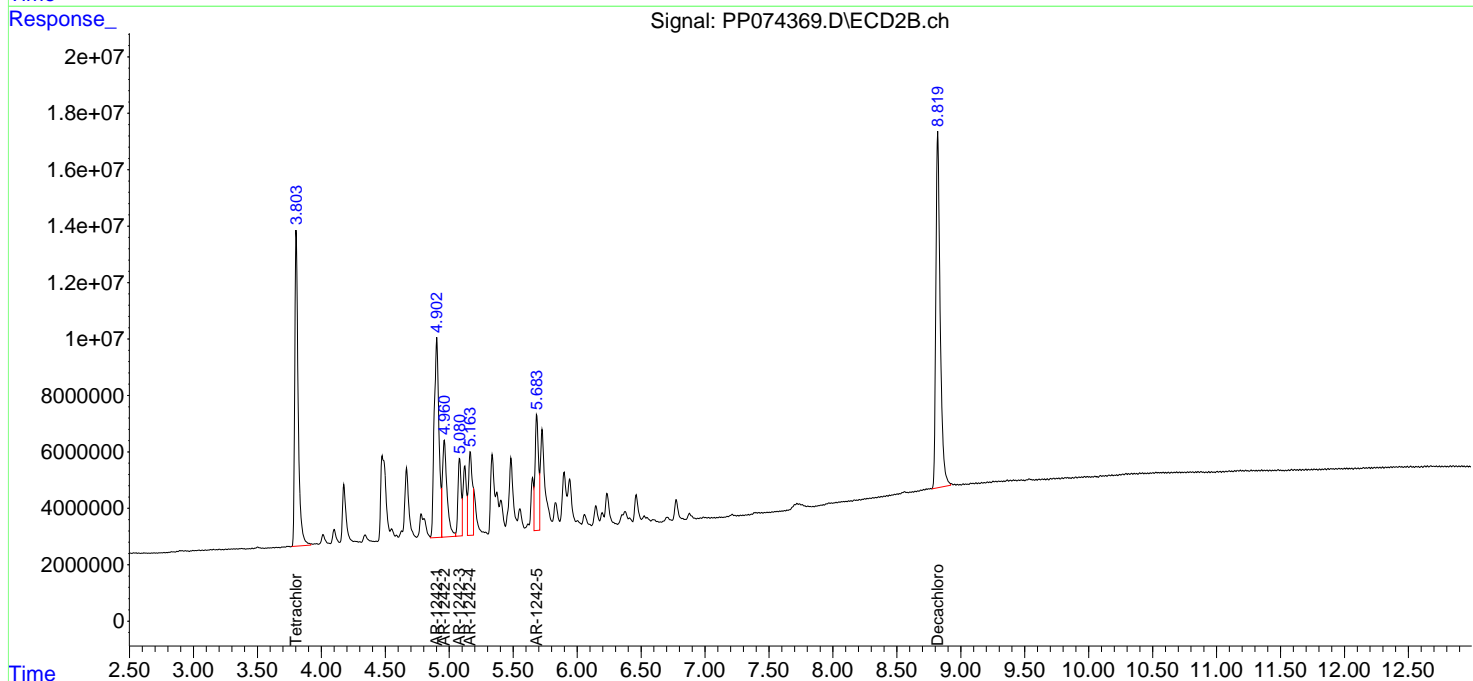
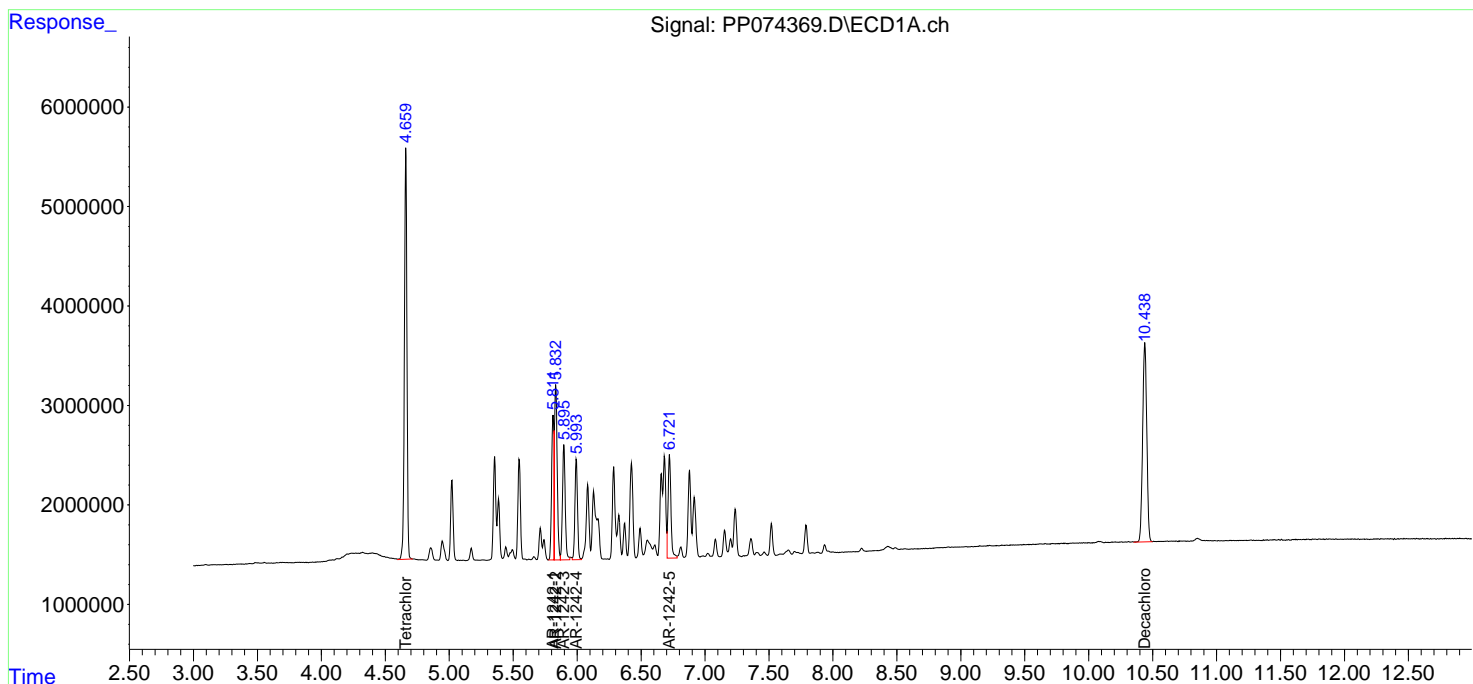
**Instrument :**  
 ECD\_P  
**ClientSampleId :**  
 AR1242CCC500

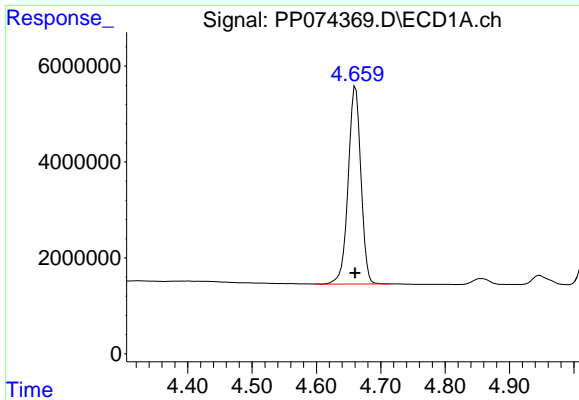
**Manual Integrations**  
**APPROVED**

Reviewed By :Yogesh Patel 08/14/2025  
 Supervised By :mohammad ahmed 08/18/2025

Integration File signal 1: autoint1.e  
 Integration File signal 2: autoint2.e  
 Quant Time: Aug 14 01:51:06 2025  
 Quant Method : Z:\pestpcbsrv\HPCHEM1\ECD\_P\methods\PP080125.M  
 Quant Title : GC EXTRACTABLES  
 QLast Update : Mon Aug 04 11:01:49 2025  
 Response via : Initial Calibration  
 Integrator: ChemStation

Volume Inj. : 2 µl  
 Signal #1 Phase : ZB-MR1 Signal #2 Phase: ZB-MR2  
 Signal #1 Info : 30Mx0.32mmx 0.50µ Signal #2 Info : 30M x 0.32mm x 0.25µm

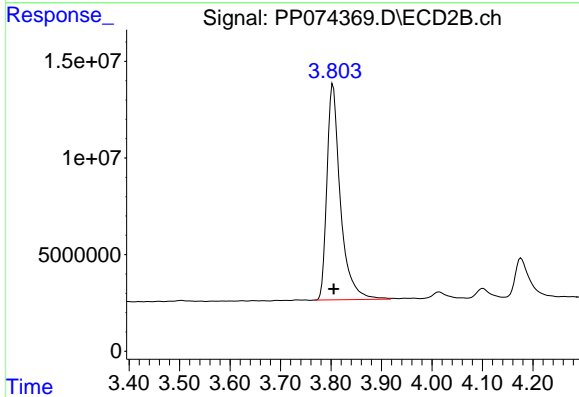




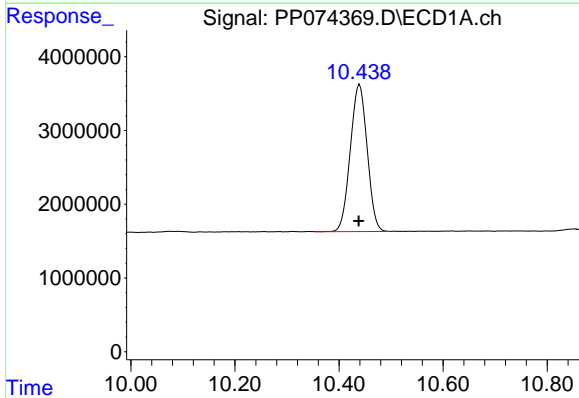
#1 Tetrachloro-m-xylene  
 R.T.: 4.661 min  
 Delta R.T.: 0.000 min  
 Response: 56882606  
 Conc: 50.87 ng/ml

Instrument : ECD\_P  
 Client Sample Id : AR1242CCC500

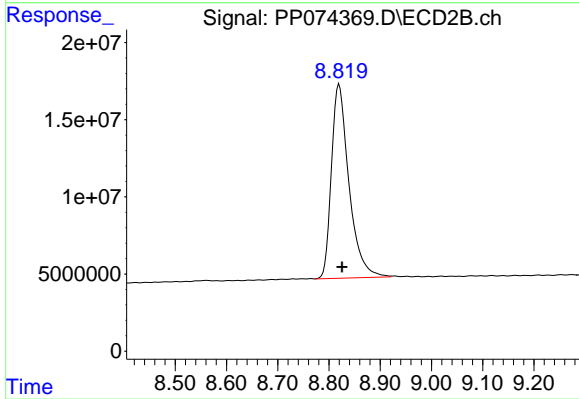
Manual Integrations  
**APPROVED**  
 Reviewed By :Yogesh Patel 08/14/2025  
 Supervised By :mohammad ahmed 08/18/2025



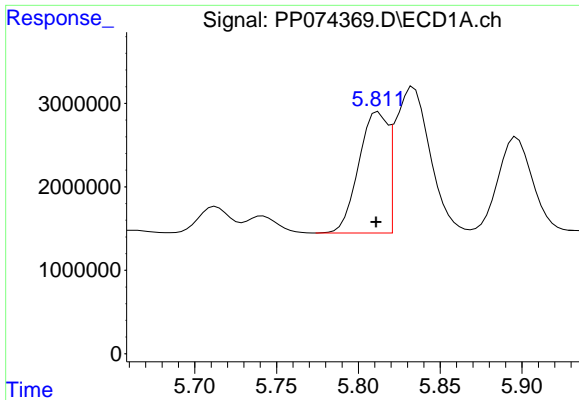
#1 Tetrachloro-m-xylene  
 R.T.: 3.804 min  
 Delta R.T.: -0.002 min  
 Response: 207441025  
 Conc: 54.10 ng/ml



#2 Decachlorobiphenyl  
 R.T.: 10.440 min  
 Delta R.T.: 0.002 min  
 Response: 44866323  
 Conc: 46.20 ng/ml



#2 Decachlorobiphenyl  
 R.T.: 8.820 min  
 Delta R.T.: -0.006 min  
 Response: 298313721  
 Conc: 49.61 ng/ml



#16 AR-1242-1

R.T.: 5.812 min  
 Delta R.T.: 0.001 min  
 Response: 17826073  
 Conc: 478.35 ng/ml

Instrument :

ECD\_P

ClientSampleId :

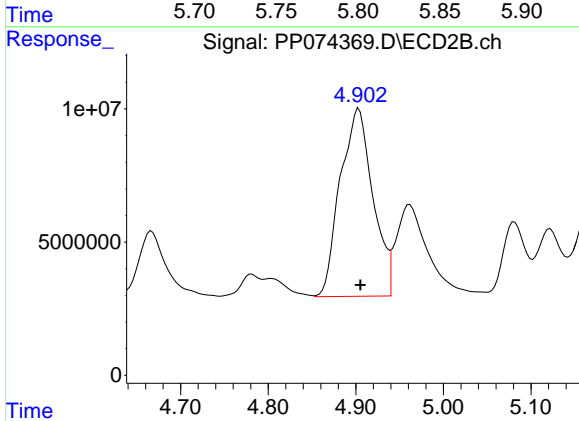
AR1242CCC500

Manual Integrations

APPROVED

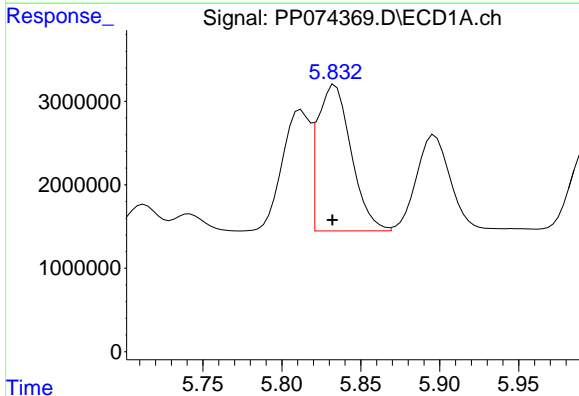
Reviewed By :Yogesh Patel 08/14/2025

Supervised By :mohammad ahmed 08/18/2025



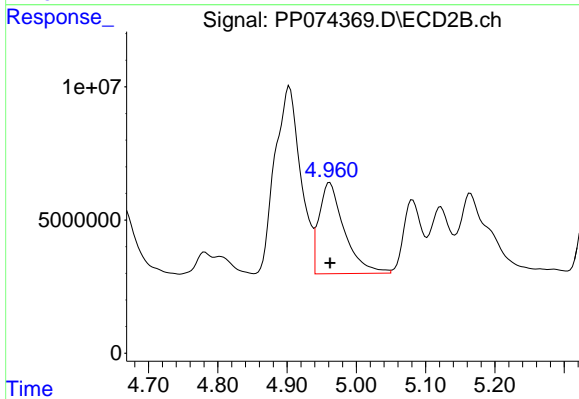
#16 AR-1242-1

R.T.: 4.903 min  
 Delta R.T.: -0.002 min  
 Response: 182663291  
 Conc: 529.24 ng/ml



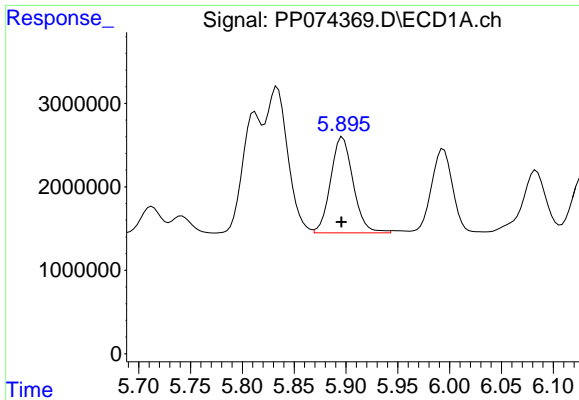
#17 AR-1242-2

R.T.: 5.834 min  
 Delta R.T.: 0.002 min  
 Response: 25911274  
 Conc: 476.23 ng/ml



#17 AR-1242-2

R.T.: 4.962 min  
 Delta R.T.: 0.000 min  
 Response: 86636737  
 Conc: 530.29 ng/ml



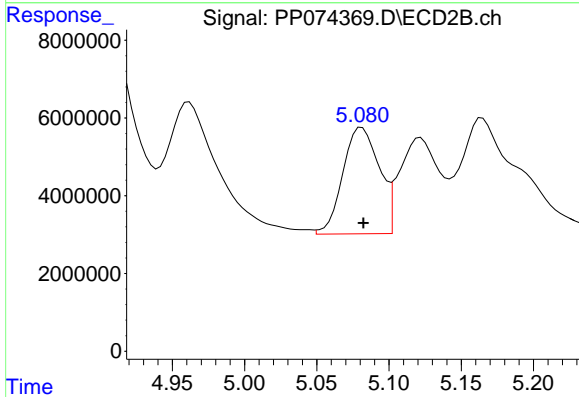
#18 AR-1242-3

R.T.: 5.897 min  
 Delta R.T.: 0.001 min  
 Response: 17379154  
 Conc: 486.32 ng/ml

Instrument :  
 ECD\_P  
 ClientSampleId :  
 AR1242CCC500

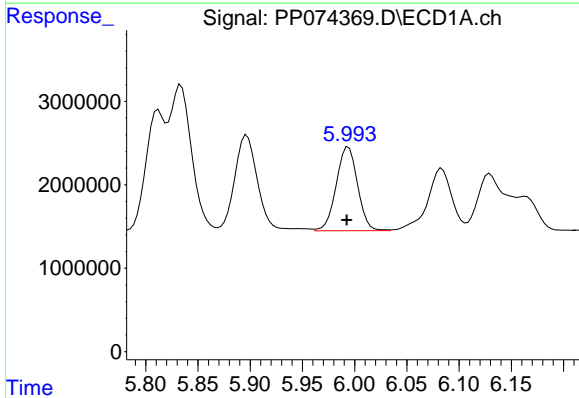
Manual Integrations  
 APPROVED

Reviewed By :Yogesh Patel 08/14/2025  
 Supervised By :mohammad ahmed 08/18/2025



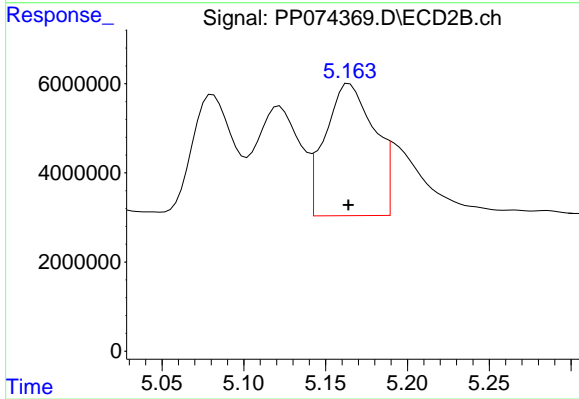
#18 AR-1242-3

R.T.: 5.081 min  
 Delta R.T.: 0.000 min  
 Response: 47986436  
 Conc: 520.19 ng/ml



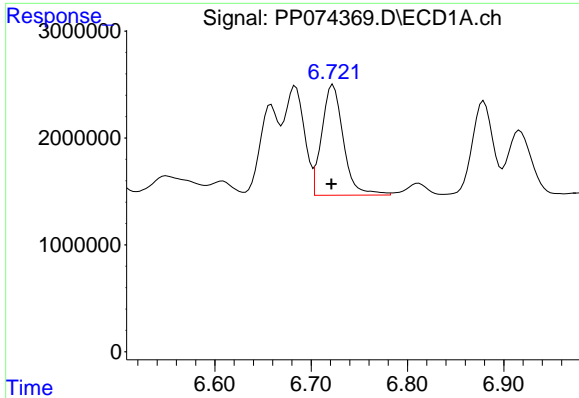
#19 AR-1242-4

R.T.: 5.994 min  
 Delta R.T.: 0.002 min  
 Response: 14301693  
 Conc: 489.47 ng/ml



#19 AR-1242-4

R.T.: 5.163 min  
 Delta R.T.: 0.000 min  
 Response: 63053010  
 Conc: 527.99 ng/ml m



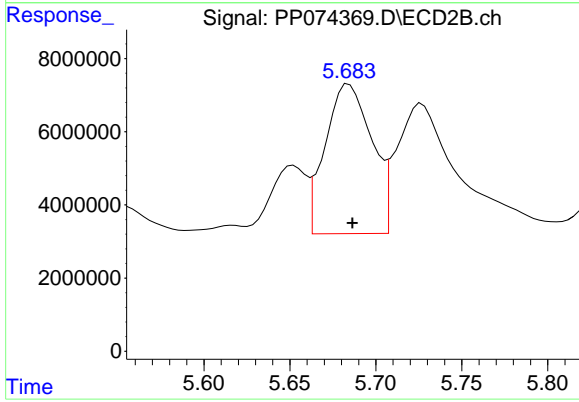
#20 AR-1242-5

R.T.: 6.723 min  
 Delta R.T.: 0.002 min  
 Response: 16125786  
 Conc: 453.51 ng/ml

Instrument :  
 ECD\_P  
 ClientSampleId :  
 AR1242CCC500

Manual Integrations  
 APPROVED

Reviewed By :Yogesh Patel 08/14/2025  
 Supervised By :mohammad ahmed 08/18/2025



#20 AR-1242-5

R.T.: 5.684 min  
 Delta R.T.: -0.002 min  
 Response: 77333838  
 Conc: 517.08 ng/ml