

Data Path : Z:\pestpcbsrv\HPCHEM1\ECD_P\Data\PP081522\
 Data File : PP050562.D
 Signal(s) : Signal #1: ECD1A.ch Signal #2: ECD2B.ch
 Acq On : 15 Aug 2022 12:43
 Operator : YP\AJ
 Sample : PB146984BL
 Misc :
 ALS Vial : 10 Sample Multiplier: 1

Instrument :
 ECD_P
ClientSampleId :
 PB146984BL

Integration File signal 1: autoint1.e
 Integration File signal 2: autoint2.e
 Quant Time: Aug 15 22:57:18 2022
 Quant Method : Z:\pestpcbsrv\HPCHEM1\ECD_P\methods\PP080622.M
 Quant Title : GC EXTRACTABLES
 QLast Update : Tue Aug 09 11:38:04 2022
 Response via : Initial Calibration
 Integrator: ChemStation

Volume Inj. : 2 µl
 Signal #1 Phase : ZB-MR1 Signal #2 Phase: ZB-MR2
 Signal #1 Info : 30Mx0.32mmx 0.50µ Signal #2 Info : 30M x 0.32mm x 0.25µm

Compound	RT#1	RT#2	Resp#1	Resp#2	ng/ml	ng/ml

System Monitoring Compounds						
1) SA Tetrachlo...	4.345	3.591	31784600	61421260	19.746	19.609
2) SA Decachlor...	10.091	8.554	31918852	27412354	18.126	17.811

Target Compounds

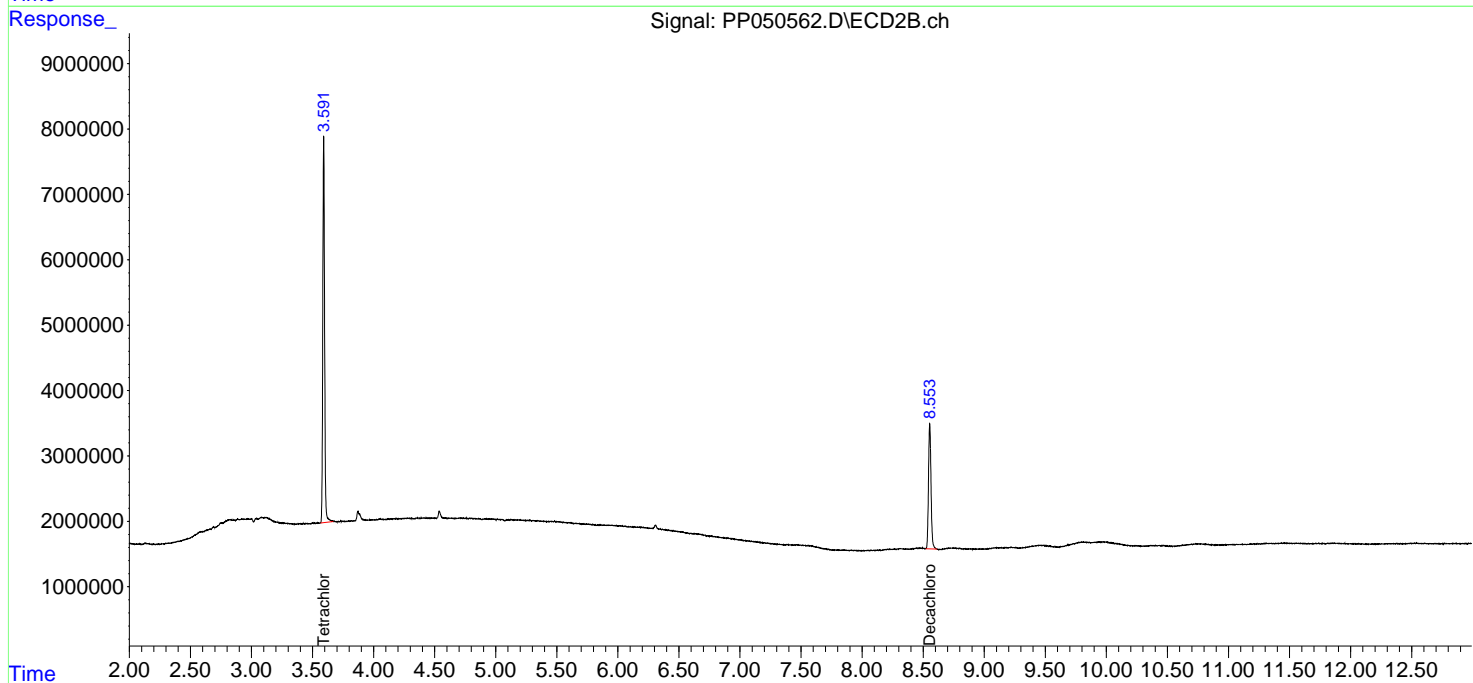
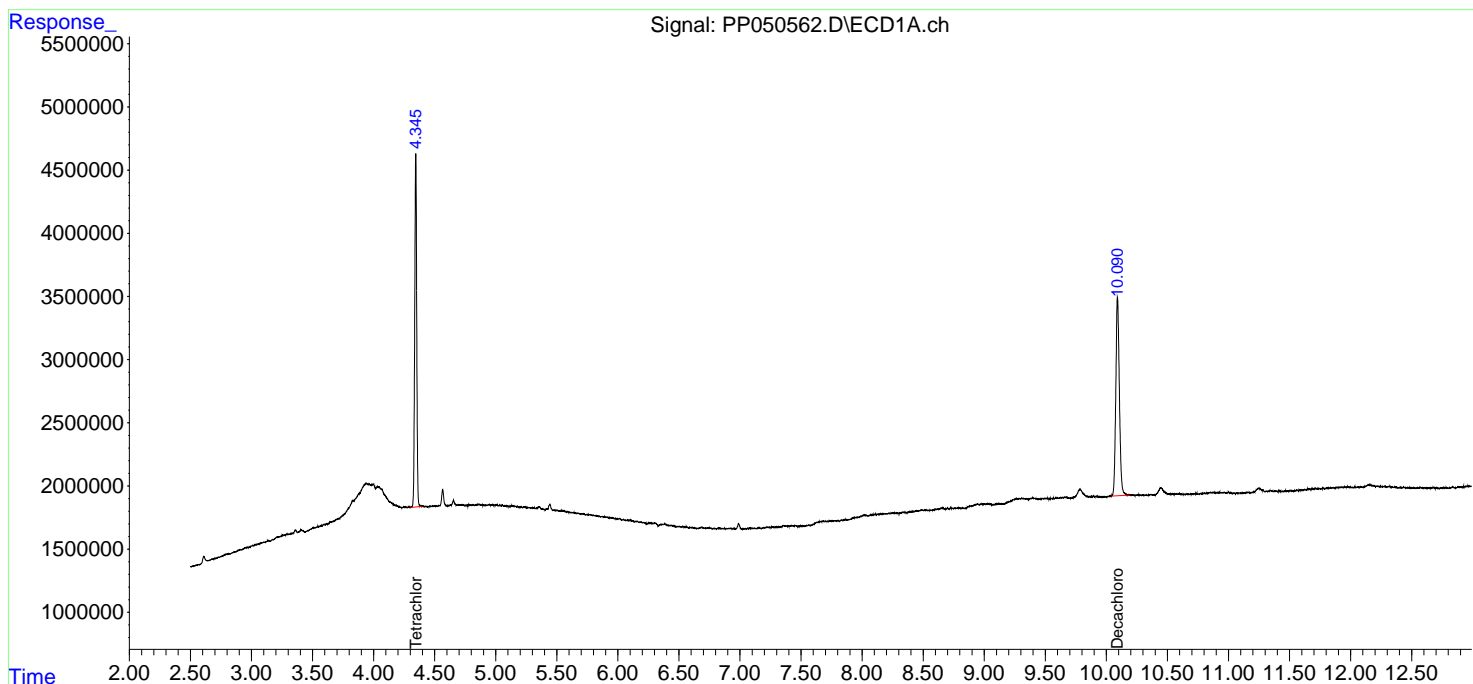
 (f)=RT Delta > 1/2 Window (#)=Amounts differ by > 25% (m)=manual int.

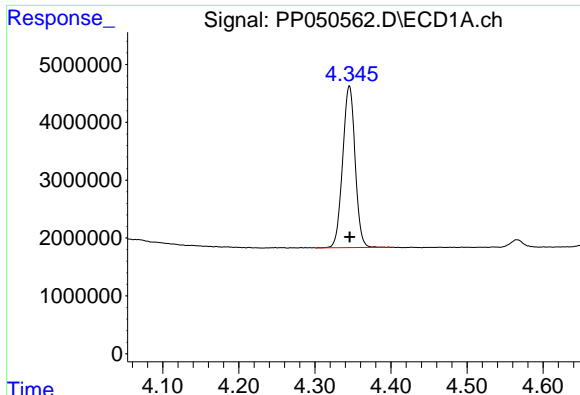
Data Path : Z:\pestpcbsrv\HPCHEM1\ECD_P\Data\PP081522\
 Data File : PP050562.D
 Signal(s) : Signal #1: ECD1A.ch Signal #2: ECD2B.ch
 Acq On : 15 Aug 2022 12:43
 Operator : YP\AJ
 Sample : PB146984BL
 Misc :
 ALS Vial : 10 Sample Multiplier: 1

Instrument :
 ECD_P
 ClientSampleId :
 PB146984BL

Integration File signal 1: autoint1.e
 Integration File signal 2: autoint2.e
 Quant Time: Aug 15 22:57:18 2022
 Quant Method : Z:\pestpcbsrv\HPCHEM1\ECD_P\methods\PP080622.M
 Quant Title : GC EXTRACTABLES
 QLast Update : Tue Aug 09 11:38:04 2022
 Response via : Initial Calibration
 Integrator: ChemStation

Volume Inj. : 2 µl
 Signal #1 Phase : ZB-MR1 Signal #2 Phase: ZB-MR2
 Signal #1 Info : 30Mx0.32mmx 0.50µ Signal #2 Info : 30M x 0.32mm x 0.25µm

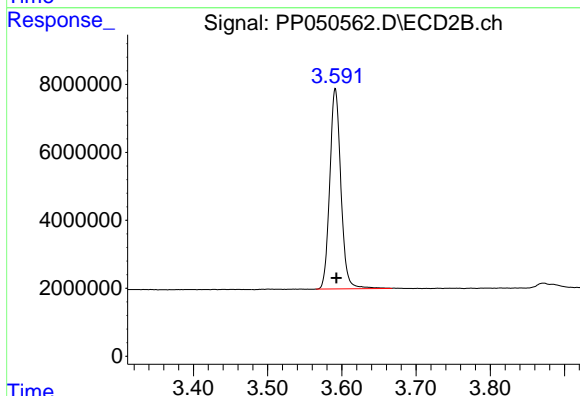




#1 Tetrachloro-m-xylene

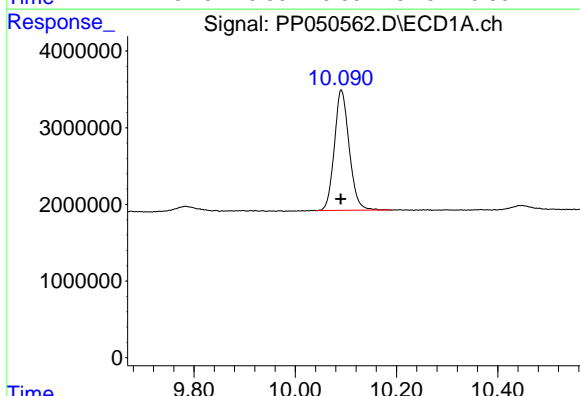
R.T.: 4.345 min
 Delta R.T.: 0.000 min
 Response: 31784600
 Conc: 19.75 ng/ml

Instrument :
 ECD_P
 ClientSampleId :
 PB146984BL



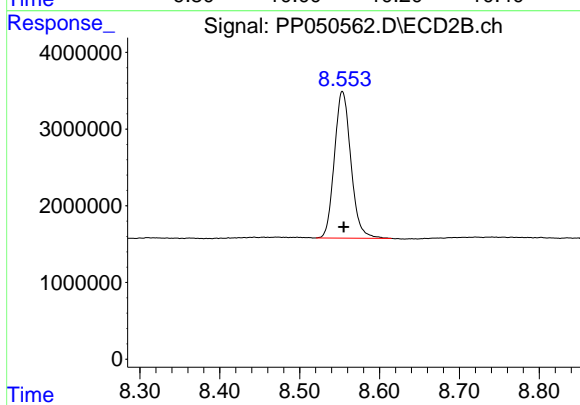
#1 Tetrachloro-m-xylene

R.T.: 3.591 min
 Delta R.T.: -0.002 min
 Response: 61421260
 Conc: 19.61 ng/ml



#2 Decachlorobiphenyl

R.T.: 10.091 min
 Delta R.T.: 0.001 min
 Response: 31918852
 Conc: 18.13 ng/ml



#2 Decachlorobiphenyl

R.T.: 8.554 min
 Delta R.T.: -0.002 min
 Response: 27412354
 Conc: 17.81 ng/ml