

Data Path : Z:\pestpcbsrv\HPCHEM1\ECD_P\Data\PP081523\
 Data File : PP059369.D
 Signal(s) : Signal #1: ECD1A.ch Signal #2: ECD2B.ch
 Acq On : 15 Aug 2023 18:14
 Operator : YP\AJ
 Sample : I.BLK
 Misc :
 ALS Vial : 2 Sample Multiplier: 1

Instrument :
 ECD_P
 ClientSampleId :
 I.BLK

Integration File signal 1: autoint1.e
 Integration File signal 2: autoint2.e
 Quant Time: Aug 16 00:12:56 2023
 Quant Method : Z:\pestpcbsrv\HPCHEM1\ECD_P\methods\PP080823.M
 Quant Title : GC EXTRACTABLES
 QLast Update : Wed Aug 09 02:30:13 2023
 Response via : Initial Calibration
 Integrator: ChemStation

Volume Inj. : 2 µl
 Signal #1 Phase : ZB-MR1 Signal #2 Phase: ZB-MR2
 Signal #1 Info : 30Mx0.32mmx 0.50µ Signal #2 Info : 30M x 0.32mm x 0.25µm

Compound	RT#1	RT#2	Resp#1	Resp#2	ng/ml	ng/ml

System Monitoring Compounds						
1) SA Tetrachlo...	4.415	3.645	26499215	46458237	21.596	22.929
2) SA Decachlor...	10.207	8.679	20867217	36505689	27.341	25.949

Target Compounds

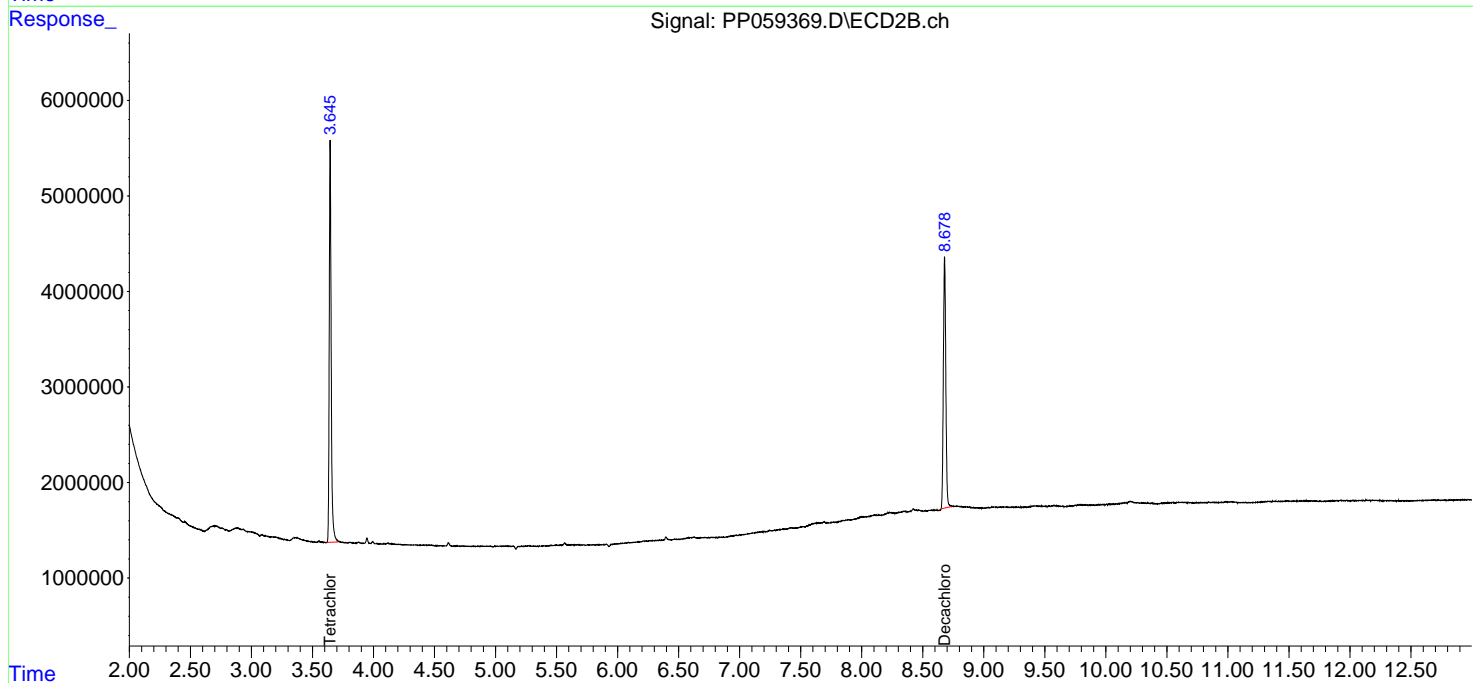
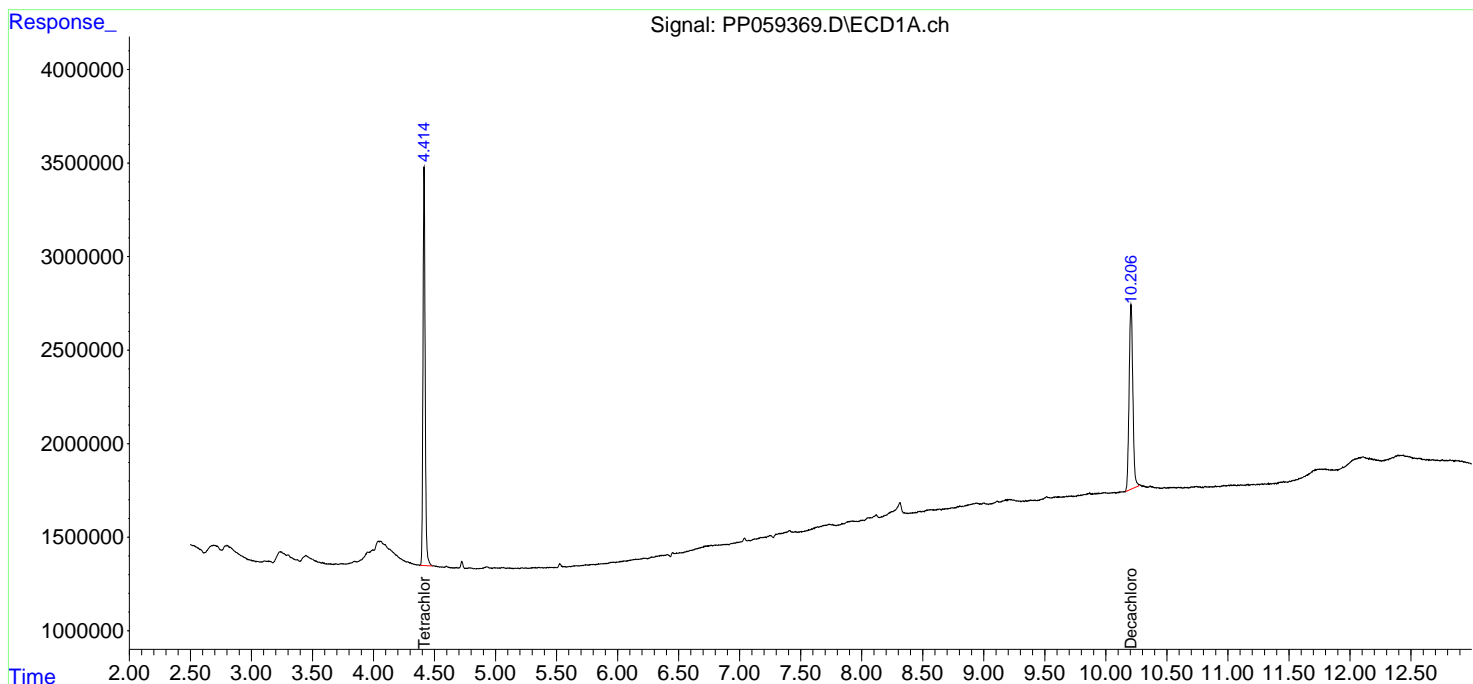
 (f)=RT Delta > 1/2 Window (#)=Amounts differ by > 25% (m)=manual int.

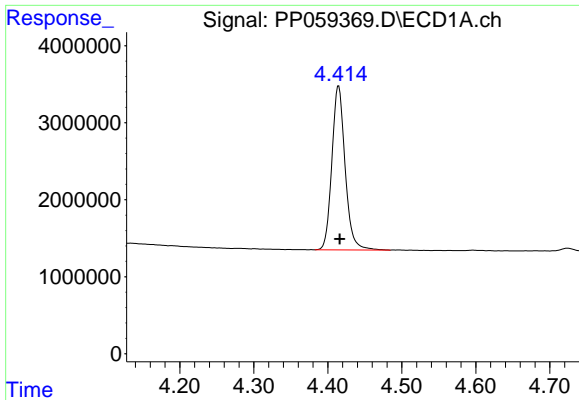
Data Path : Z:\pestpcbsrv\HPCHEM1\ECD_P\Data\PP081523\
 Data File : PP059369.D
 Signal(s) : Signal #1: ECD1A.ch Signal #2: ECD2B.ch
 Acq On : 15 Aug 2023 18:14
 Operator : YP\AJ
 Sample : I.BLK
 Misc :
 ALS Vial : 2 Sample Multiplier: 1

Instrument :
 ECD_P
 ClientSampleId :
 I.BLK

Integration File signal 1: autoint1.e
 Integration File signal 2: autoint2.e
 Quant Time: Aug 16 00:12:56 2023
 Quant Method : Z:\pestpcbsrv\HPCHEM1\ECD_P\methods\PP080823.M
 Quant Title : GC EXTRACTABLES
 QLast Update : Wed Aug 09 02:30:13 2023
 Response via : Initial Calibration
 Integrator: ChemStation

Volume Inj. : 2 µl
 Signal #1 Phase : ZB-MR1 Signal #2 Phase: ZB-MR2
 Signal #1 Info : 30Mx0.32mmx 0.50µ Signal #2 Info : 30M x 0.32mm x 0.25µm

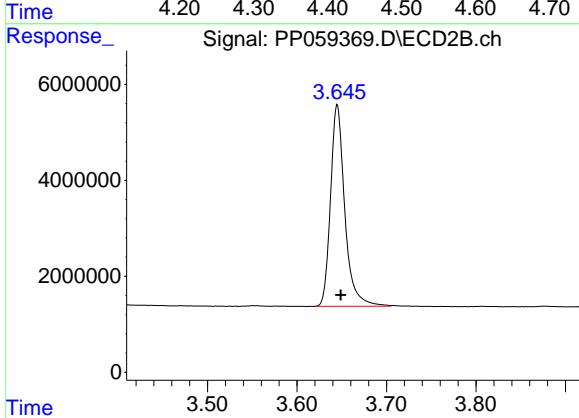




#1 Tetrachloro-m-xylene

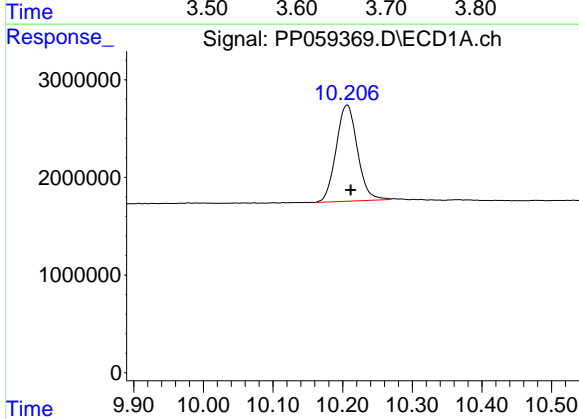
R.T.: 4.415 min
 Delta R.T.: -0.001 min
 Response: 26499215
 Conc: 21.60 ng/ml

Instrument :
 ECD_P
 ClientSampleId :
 I.BLK



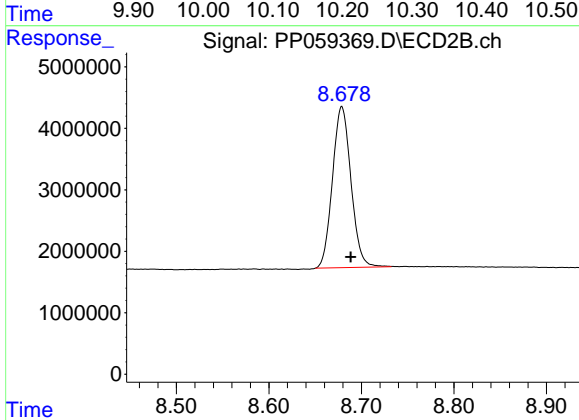
#1 Tetrachloro-m-xylene

R.T.: 3.645 min
 Delta R.T.: -0.004 min
 Response: 46458237
 Conc: 22.93 ng/ml



#2 Decachlorobiphenyl

R.T.: 10.207 min
 Delta R.T.: -0.005 min
 Response: 20867217
 Conc: 27.34 ng/ml



#2 Decachlorobiphenyl

R.T.: 8.679 min
 Delta R.T.: -0.010 min
 Response: 36505689
 Conc: 25.95 ng/ml