

Data Path : Z:\pestpcbsrv\HPCHEM1\ECD\_P\Data\PP081523\  
 Data File : PP059373.D  
 Signal(s) : Signal #1: ECD1A.ch Signal #2: ECD2B.ch  
 Acq On : 15 Aug 2023 19:19  
 Operator : YP\AJ  
 Sample : 03996-01  
 Misc :  
 ALS Vial : 16 Sample Multiplier: 1

Instrument :  
 ECD\_P  
 ClientSampleId :  
 EB-20230811

Integration File signal 1: autoint1.e  
 Integration File signal 2: autoint2.e  
 Quant Time: Aug 16 00:14:28 2023  
 Quant Method : Z:\pestpcbsrv\HPCHEM1\ECD\_P\methods\PP080823.M  
 Quant Title : GC EXTRACTABLES  
 QLast Update : Wed Aug 09 02:30:13 2023  
 Response via : Initial Calibration  
 Integrator: ChemStation

Volume Inj. : 2 µl  
 Signal #1 Phase : ZB-MR1 Signal #2 Phase: ZB-MR2  
 Signal #1 Info : 30Mx0.32mmx 0.50µ Signal #2 Info : 30M x 0.32mm x 0.25µm

Compound	RT#1	RT#2	Resp#1	Resp#2	ng/ml	ng/ml
-----						
System Monitoring Compounds						
1) SA Tetrachlo...	4.416	3.646	28699843	49405933	23.390	24.384
2) SA Decachlor...	10.204	8.678	14031217	23982520	18.384	17.047

Target Compounds

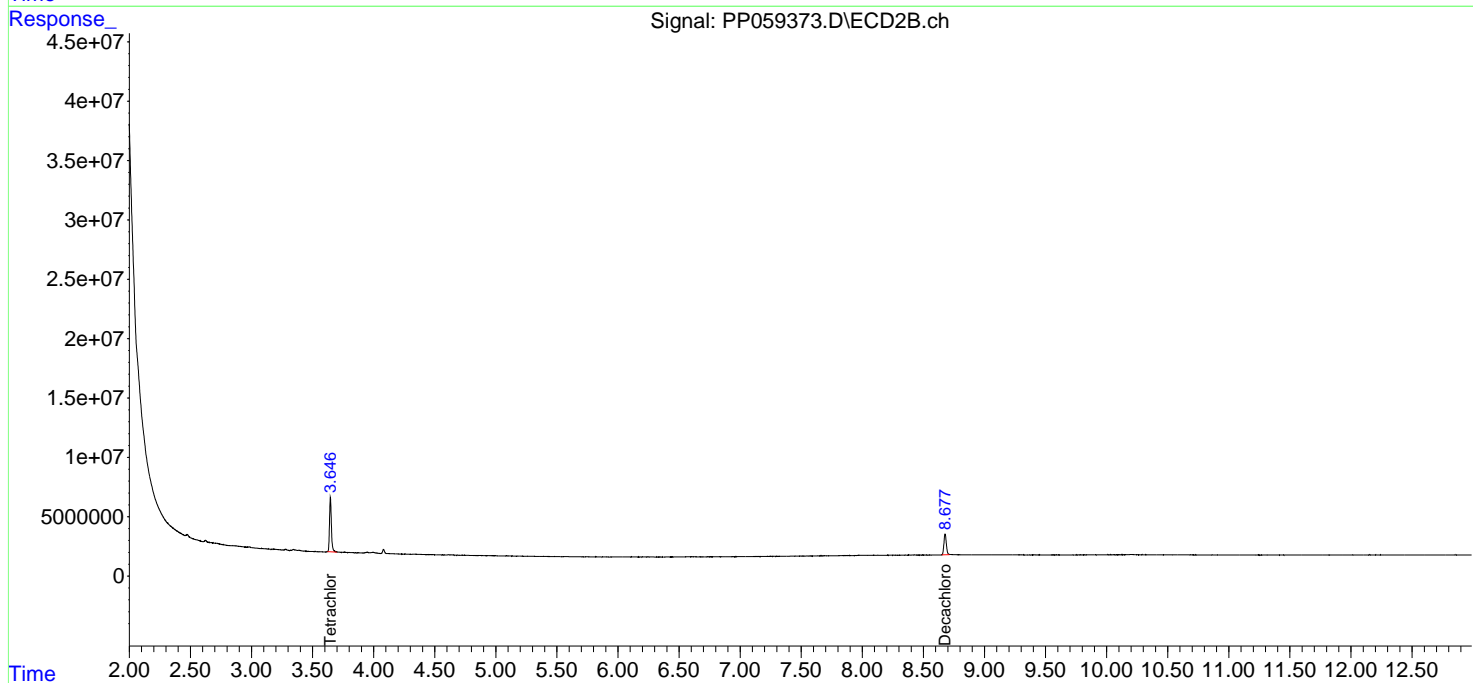
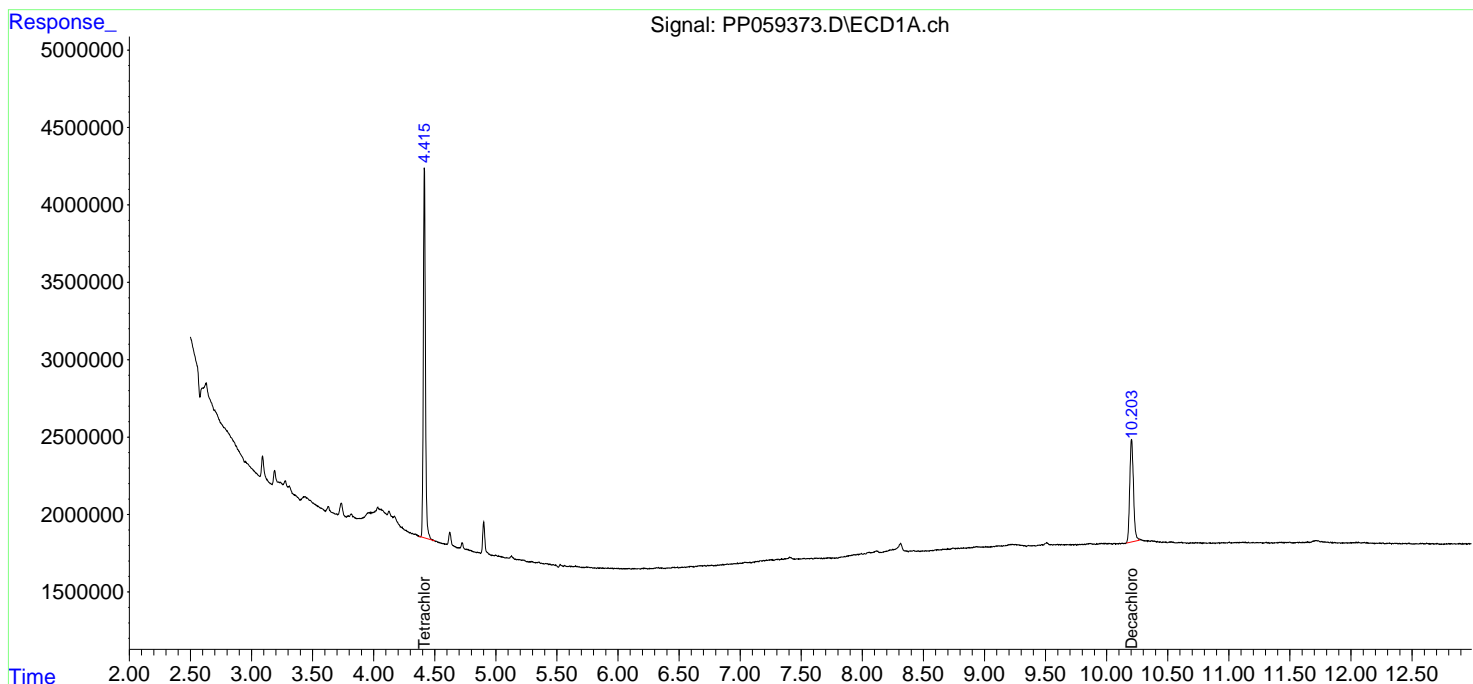
(f)=RT Delta > 1/2 Window (#)=Amounts differ by > 25% (m)=manual int.

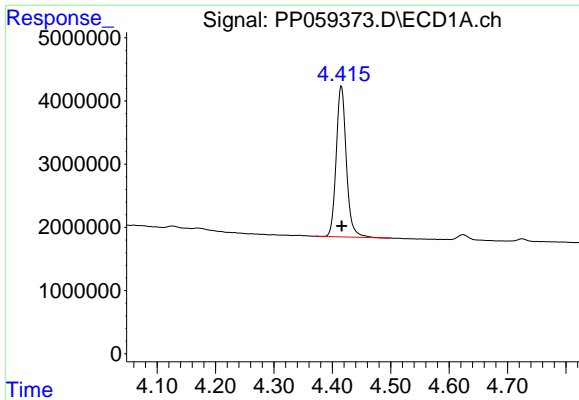
Data Path : Z:\pestpcbsrv\HPCHEM1\ECD\_P\Data\PP081523\  
 Data File : PP059373.D  
 Signal(s) : Signal #1: ECD1A.ch Signal #2: ECD2B.ch  
 Acq On : 15 Aug 2023 19:19  
 Operator : YP\AJ  
 Sample : 03996-01  
 Misc :  
 ALS Vial : 16 Sample Multiplier: 1

Instrument :  
 ECD\_P  
 ClientSampleId :  
 EB-20230811

Integration File signal 1: autoint1.e  
 Integration File signal 2: autoint2.e  
 Quant Time: Aug 16 00:14:28 2023  
 Quant Method : Z:\pestpcbsrv\HPCHEM1\ECD\_P\methods\PP080823.M  
 Quant Title : GC EXTRACTABLES  
 QLast Update : Wed Aug 09 02:30:13 2023  
 Response via : Initial Calibration  
 Integrator: ChemStation

Volume Inj. : 2 µl  
 Signal #1 Phase : ZB-MR1 Signal #2 Phase: ZB-MR2  
 Signal #1 Info : 30Mx0.32mmx 0.50µm Signal #2 Info : 30M x 0.32mm x 0.25µm

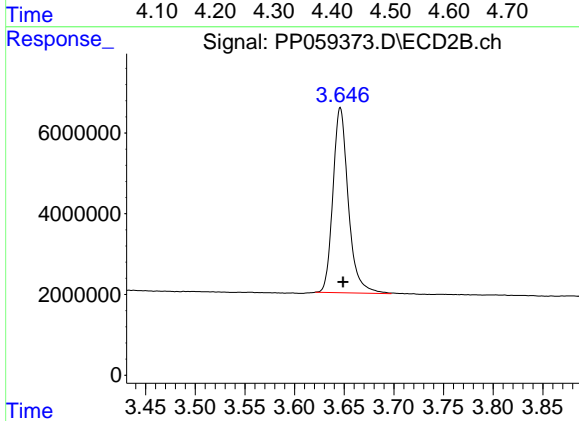




#1 Tetrachloro-m-xylene

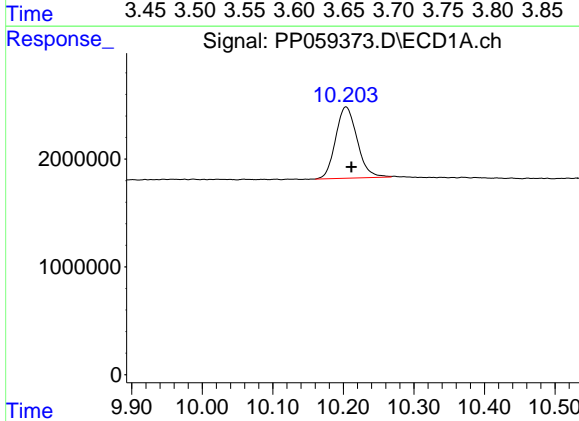
R.T.: 4.416 min  
 Delta R.T.: 0.000 min  
 Response: 28699843  
 Conc: 23.39 ng/ml

Instrument :  
 ECD\_P  
 ClientSampleId :  
 EB-20230811



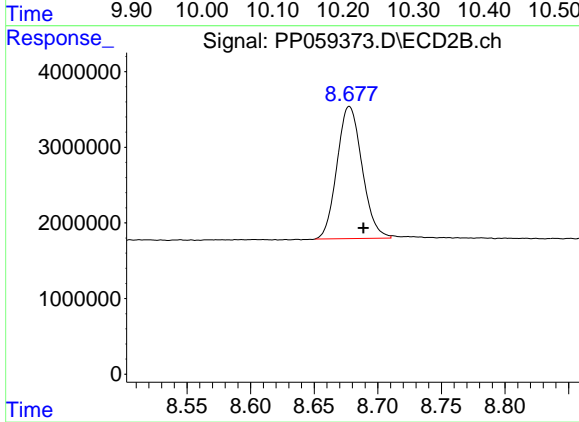
#1 Tetrachloro-m-xylene

R.T.: 3.646 min  
 Delta R.T.: -0.003 min  
 Response: 49405933  
 Conc: 24.38 ng/ml



#2 Decachlorobiphenyl

R.T.: 10.204 min  
 Delta R.T.: -0.007 min  
 Response: 14031217  
 Conc: 18.38 ng/ml



#2 Decachlorobiphenyl

R.T.: 8.678 min  
 Delta R.T.: -0.011 min  
 Response: 23982520  
 Conc: 17.05 ng/ml