

Data Path : Z:\pestpcbsrv\HPCHEM1\ECD_P\Data\PP081621\
 Data File : PP038433.D
 Signal(s) : Signal #1: ECD1A.CH Signal #2: ECD2B.CH
 Acq On : 16 Aug 2021 17:08
 Operator : AJ\MA
 Sample : AR1254CCC500
 Misc :
 ALS Vial : 6 Sample Multiplier: 1

Instrument :
 ECD_P
 ClientSampled :
 AR1254CCC500

Integration File signal 1: autoint1.e
 Integration File signal 2: autoint2.e
 Quant Time: Aug 17 02:17:58 2021
 Quant Method : Z:\pestpcbsrv\HPCHEM1\ECD_P\methods\PP080521.M
 Quant Title : GC EXTRACTABLES
 QLast Update : Fri Aug 06 03:08:47 2021
 Response via : Initial Calibration
 Integrator: ChemStation 6890 Scale Mode: Small noise peaks clipped

Volume Inj. : 2 µl
 Signal #1 Phase : ZB-MR1 Signal #2 Phase: ZB-MR2
 Signal #1 Info : 30Mx0.32mmx 0.50µ Signal #2 Info : 30M x 0.32mm x 0.25µm

Compound	RT#1	RT#2	Resp#1	Resp#2	ng/ml	ng/ml
System Monitoring Compounds						
1) SA Tetrachlo...	4.888	3.873	1984649	1195106	44.658	46.402
2) SA Decachlor...	10.876	9.135	1143743	1109551	50.278	42.884
Target Compounds						
3) L1 AR-1016-1	6.207	0.000	8125	0	5.471	N.D. #
4) L1 AR-1016-2	6.207f	0.000	8125	0	3.815	N.D. #
6) L1 AR-1016-4	0.000	5.380	0	239850	N.D.	422.239 #
7) L1 AR-1016-5	6.717	5.607	191891	149563	191.349	194.914
9) L2 AR-1221-2	5.239	0.000	26281	0	65.034	N.D. #
13) L3 AR-1232-3	6.207f	0.000	8125	0	8.255	N.D. #
14) L3 AR-1232-4	0.000	5.424	0	65716	N.D.	222.446 #
15) L3 AR-1232-5	6.500	5.607	330698	149563	1040.966	403.569 #
16) L4 AR-1242-1	6.207	0.000	8125	0	7.178	N.D. #
17) L4 AR-1242-2	6.207f	0.000	8125	0	5.049	N.D. #
19) L4 AR-1242-4	0.000	5.424	0	65716	N.D.	125.083 #
20) L4 AR-1242-5	7.187	5.985	170494	594306	206.757	919.758 #
21) L5 AR-1248-1	6.207	0.000	8125	0	9.562	N.D. #
22) L5 AR-1248-2	6.500	5.380	330698	239850	305.894	322.945
23) L5 AR-1248-3	6.717	5.424	191891	65716	150.577	83.518 #
24) L5 AR-1248-4	7.146	5.607	286874	149563	212.478	162.295
25) L5 AR-1248-5	7.187	6.027	170494	73873	128.958	78.468 #
26) L6 AR-1254-1	7.115	5.985	534393	594306	410.123	444.222
27) L6 AR-1254-2	7.345	6.145	770798	513400	407.533	447.954
28) L6 AR-1254-3	7.727	6.562	810173	843939	408.366	447.027
29) L6 AR-1254-4	8.024	6.802	558886	529269	389.434	439.589
30) L6 AR-1254-5	8.452	7.230	568749	705549	391.364	427.554
31) L7 AR-1260-1	7.893	6.701	315110	398726	219.561	306.240 #
32) L7 AR-1260-2	8.159	6.899	371100	302650	215.549	194.514
33) L7 AR-1260-3	8.514f	7.048	70521	359031	59.032	235.862 #
34) L7 AR-1260-4	8.749	7.532	215221	32466	151.107	26.538 #
35) L7 AR-1260-5	9.079	7.781	88023	58538	33.153	20.044 #
36) L8 AR-1262-1	8.514f	7.230	70521	705549	42.930	771.920 #
37) L8 AR-1262-2	9.079	7.781	88023	58538	30.972	18.916 #
38) L8 AR-1262-3	9.410f	0.000	60404	0	51.003	N.D. #
39) L8 AR-1262-4	9.457f	8.125f	11274	78277	14.734	33.057 #
41) L9 AR-1268-1	9.410f	0.000	60404	0	18.488	N.D. #
42) L9 AR-1268-2	0.000	8.125f	0	78277	N.D.	22.912 #

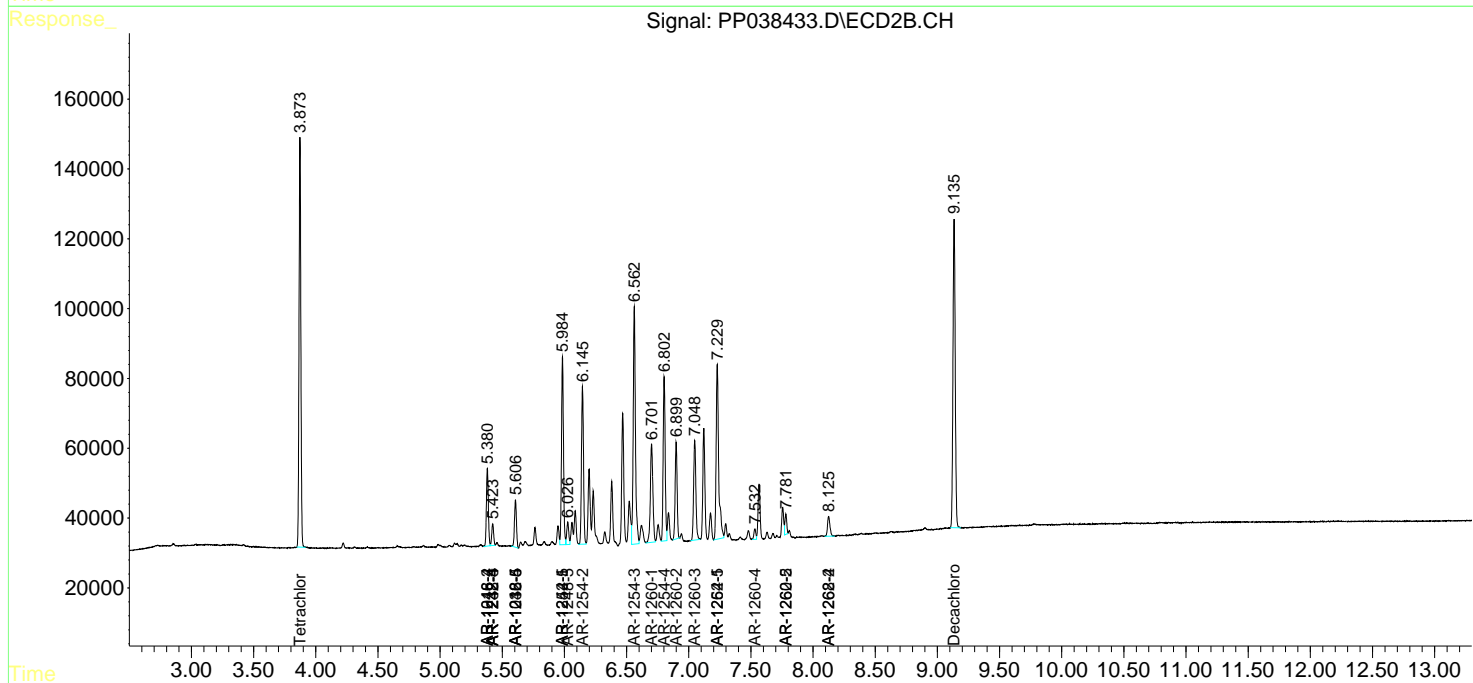
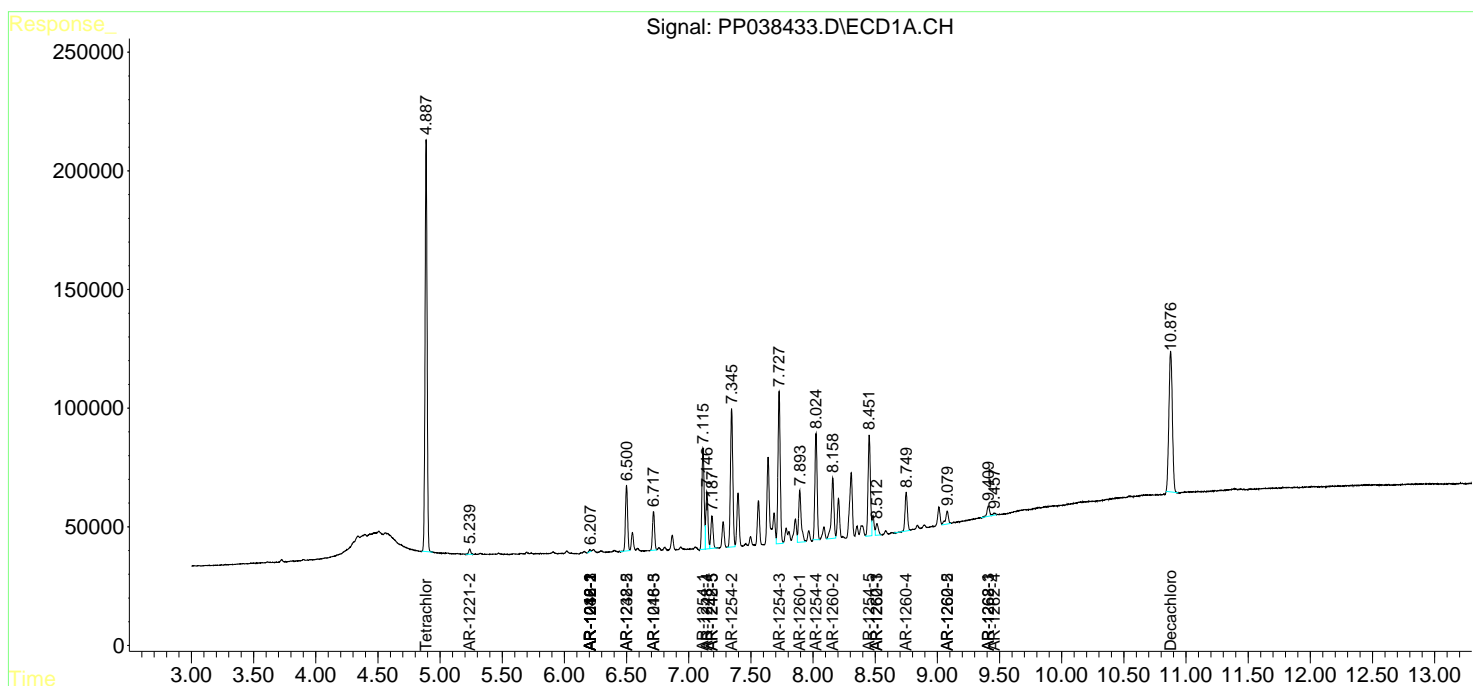
(f)=RT Delta > 1/2 Window (#)=Amounts differ by > 25% (m)=manual int.

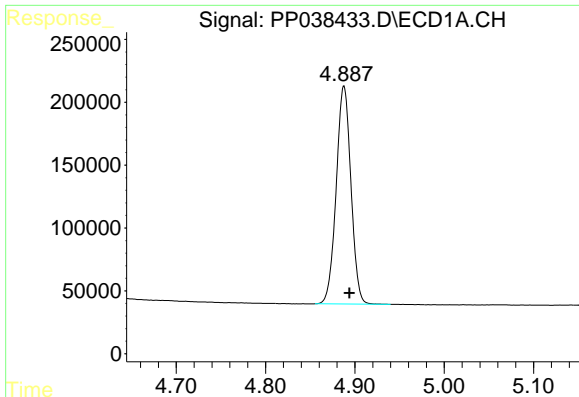
Data Path : Z:\pestpcbsrv\HPCHEM1\ECD_P\Data\PP081621\
 Data File : PP038433.D
 Signal(s) : Signal #1: ECD1A.CH Signal #2: ECD2B.CH
 Acq On : 16 Aug 2021 17:08
 Operator : AJ\MA
 Sample : AR1254CCC500
 Misc :
 ALS Vial : 6 Sample Multiplier: 1

Instrument :
 ECD_P
 Client Sampled :
 AR1254CCC500

Integration File signal 1: autoint1.e
 Integration File signal 2: autoint2.e
 Quant Time: Aug 17 02:17:58 2021
 Quant Method : Z:\pestpcbsrv\HPCHEM1\ECD_P\methods\PP080521.M
 Quant Title : GC EXTRACTABLES
 QLast Update : Fri Aug 06 03:08:47 2021
 Response via : Initial Calibration
 Integrator: ChemStation 6890 Scale Mode: Small noise peaks clipped

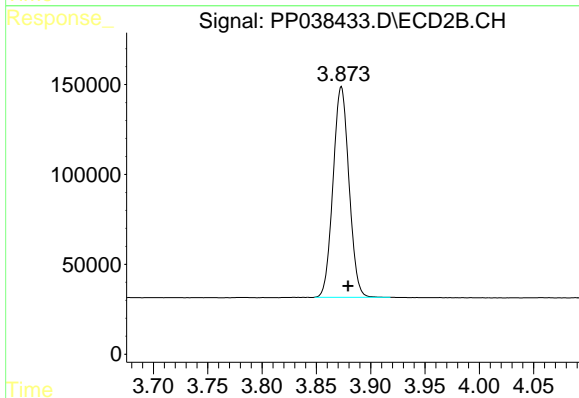
Volume Inj. : 2 µl
 Signal #1 Phase : ZB-MR1 Signal #2 Phase: ZB-MR2
 Signal #1 Info : 30Mx0.32mmx 0.50µ Signal #2 Info : 30M x 0.32mm x 0.25µm



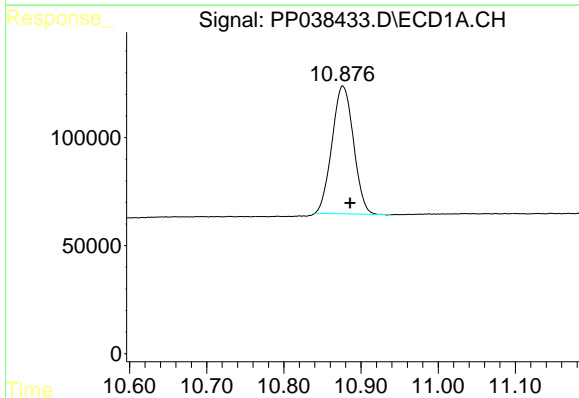


#1 Tetrachloro-m-xylene
 R.T.: 4.888 min
 Delta R.T.: -0.006 min
 Response: 1984649
 Conc: 44.66 ng/ml

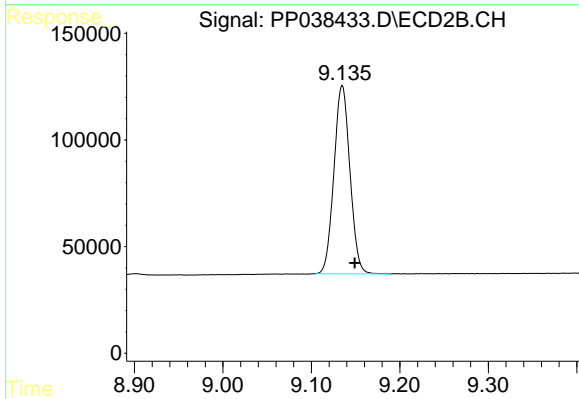
Instrument :
 ECD_P
 ClientSampleId :
 AR1254CCC500



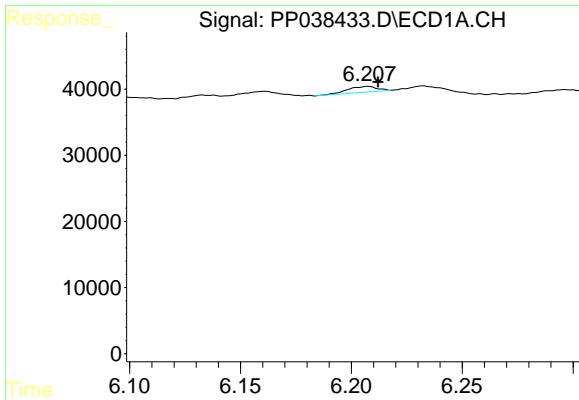
#1 Tetrachloro-m-xylene
 R.T.: 3.873 min
 Delta R.T.: -0.006 min
 Response: 1195106
 Conc: 46.40 ng/ml



#2 Decachlorobiphenyl
 R.T.: 10.876 min
 Delta R.T.: -0.009 min
 Response: 1143743
 Conc: 50.28 ng/ml



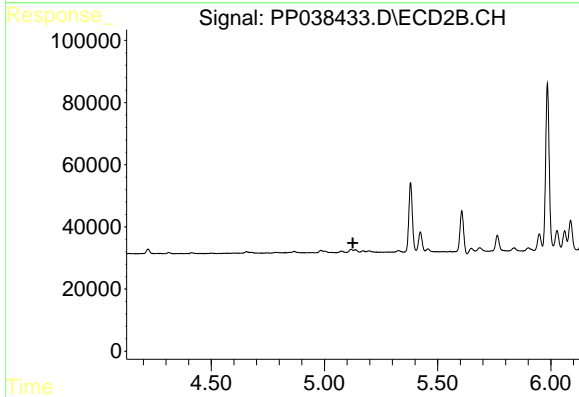
#2 Decachlorobiphenyl
 R.T.: 9.135 min
 Delta R.T.: -0.014 min
 Response: 1109551
 Conc: 42.88 ng/ml



#3 AR-1016-1

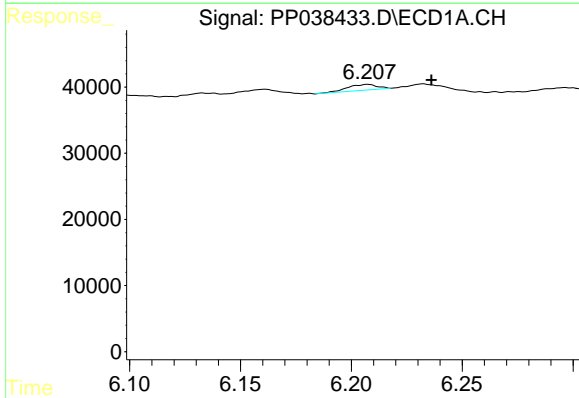
R.T.: 6.207 min
 Delta R.T.: -0.005 min
 Response: 8125
 Conc: 5.47 ng/ml

Instrument :
 ECD_P
 ClientSampleId :
 AR1254CCC500



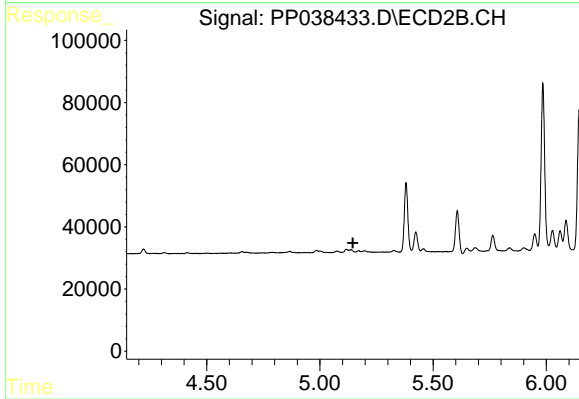
#3 AR-1016-1

R.T.: 0.000 min
 Exp R.T. : 5.126 min
 Response: 0
 Conc: N.D.



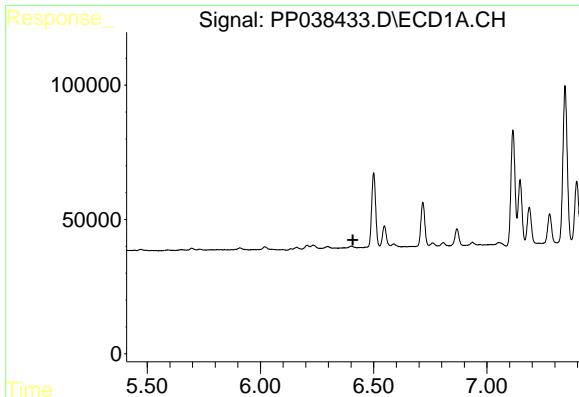
#4 AR-1016-2

R.T.: 6.207 min
 Delta R.T.: -0.029 min
 Response: 8125
 Conc: 3.81 ng/ml



#4 AR-1016-2

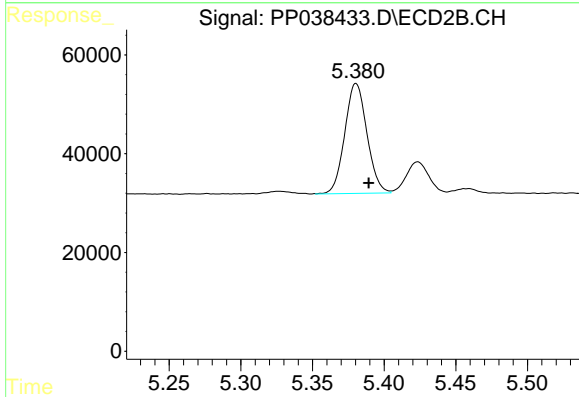
R.T.: 0.000 min
 Exp R.T. : 5.145 min
 Response: 0
 Conc: N.D.



#6 AR-1016-4

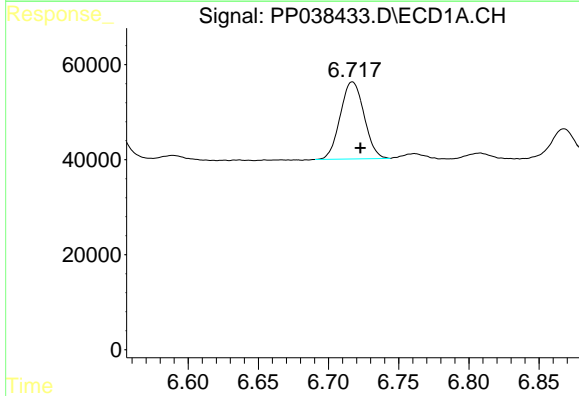
R.T.: 0.000 min
 Exp R.T.: 6.408 min
 Response: 0
 Conc: N.D.

Instrument :
 ECD_P
 ClientSampleId :
 AR1254CCC500



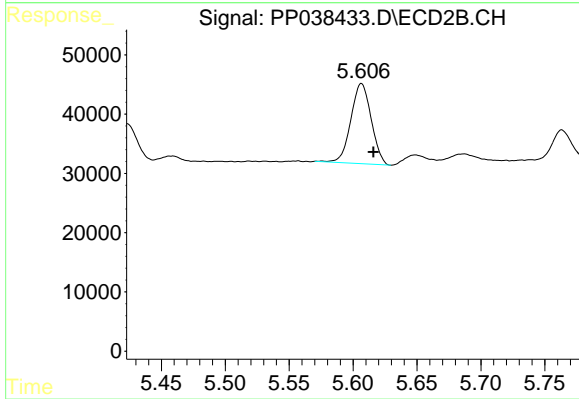
#6 AR-1016-4

R.T.: 5.380 min
 Delta R.T.: -0.009 min
 Response: 239850
 Conc: 422.24 ng/ml



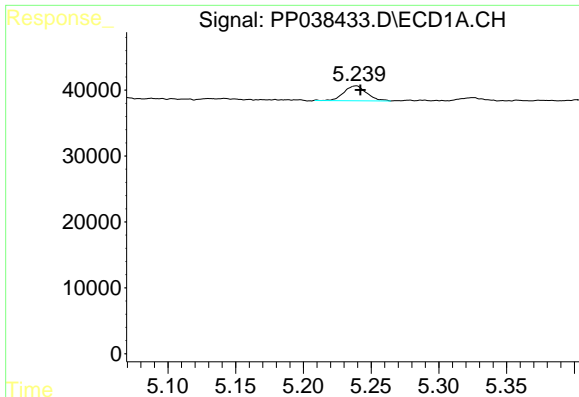
#7 AR-1016-5

R.T.: 6.717 min
 Delta R.T.: -0.006 min
 Response: 191891
 Conc: 191.35 ng/ml



#7 AR-1016-5

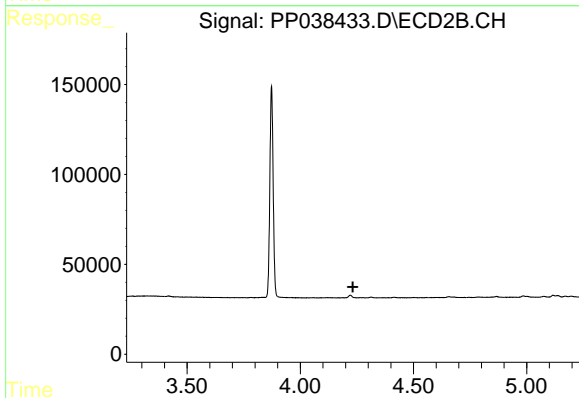
R.T.: 5.607 min
 Delta R.T.: -0.009 min
 Response: 149563
 Conc: 194.91 ng/ml



#9 AR-1221-2

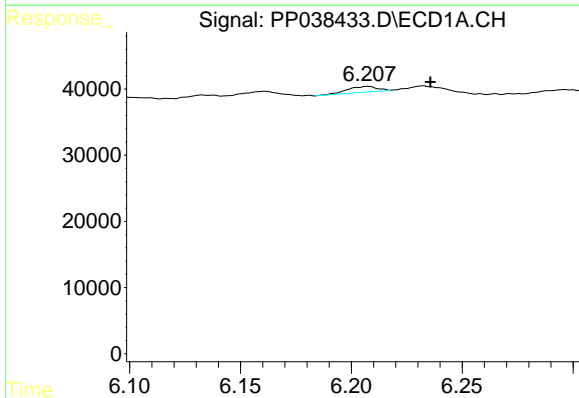
R.T.: 5.239 min
 Delta R.T.: -0.003 min
 Response: 26281
 Conc: 65.03 ng/ml

Instrument :
 ECD_P
 ClientSampleId :
 AR1254CCC500



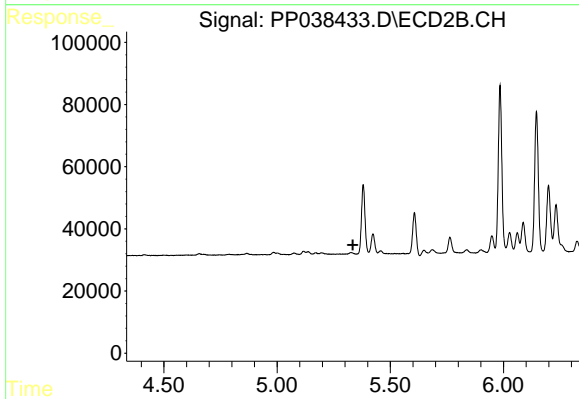
#9 AR-1221-2

R.T.: 0.000 min
 Exp R.T. : 4.232 min
 Response: 0
 Conc: N.D.



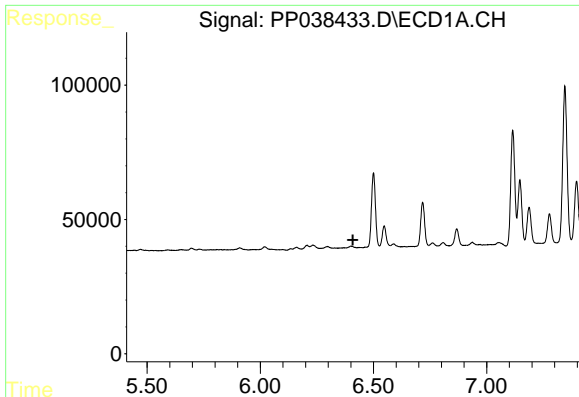
#13 AR-1232-3

R.T.: 6.207 min
 Delta R.T.: -0.028 min
 Response: 8125
 Conc: 8.25 ng/ml



#13 AR-1232-3

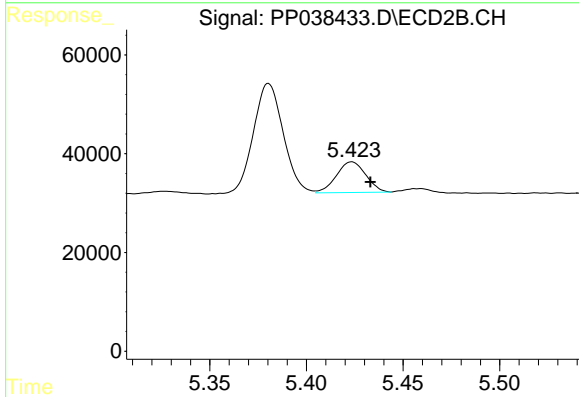
R.T.: 0.000 min
 Exp R.T. : 5.335 min
 Response: 0
 Conc: N.D.



#14 AR-1232-4

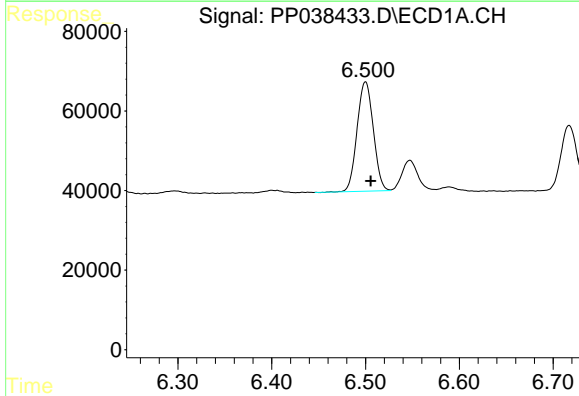
R.T.: 0.000 min
 Exp R.T.: 6.409 min
 Response: 0
 Conc: N.D.

Instrument :
 ECD_P
 ClientSampleId :
 AR1254CCC500



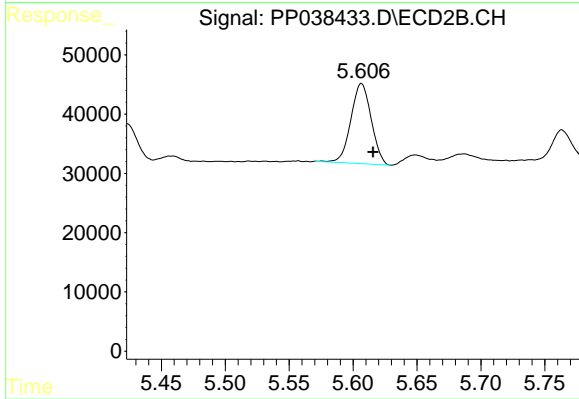
#14 AR-1232-4

R.T.: 5.424 min
 Delta R.T.: -0.010 min
 Response: 65716
 Conc: 222.45 ng/ml



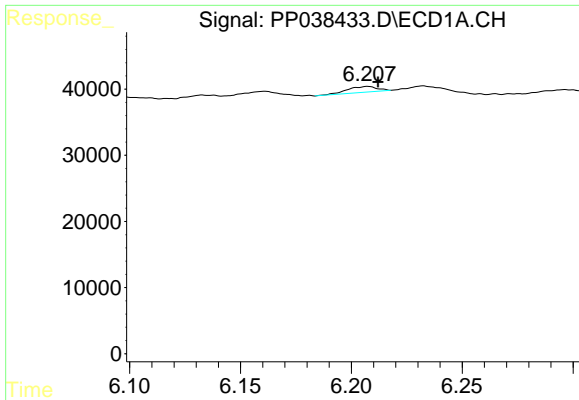
#15 AR-1232-5

R.T.: 6.500 min
 Delta R.T.: -0.006 min
 Response: 330698
 Conc: 1040.97 ng/ml



#15 AR-1232-5

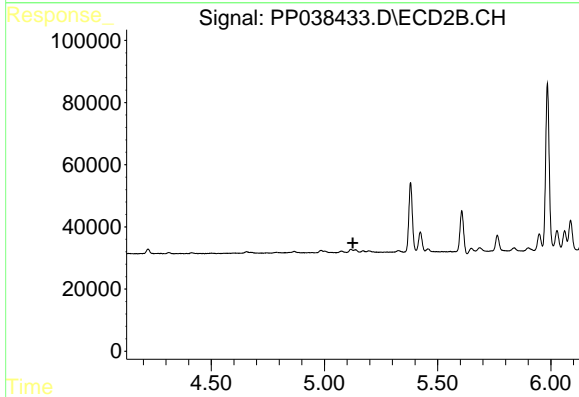
R.T.: 5.607 min
 Delta R.T.: -0.009 min
 Response: 149563
 Conc: 403.57 ng/ml



#16 AR-1242-1

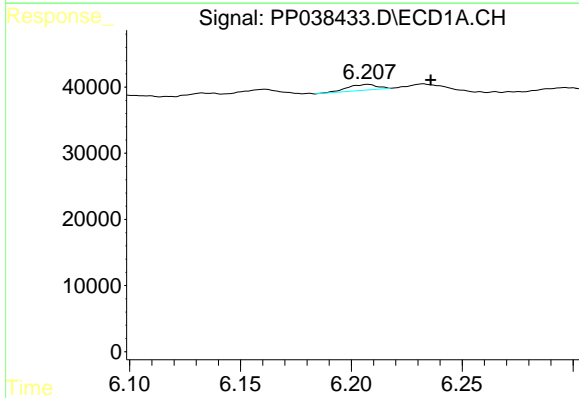
R.T.: 6.207 min
 Delta R.T.: -0.005 min
 Response: 8125
 Conc: 7.18 ng/ml

Instrument :
 ECD_P
ClientSampled :
 AR1254CCC500



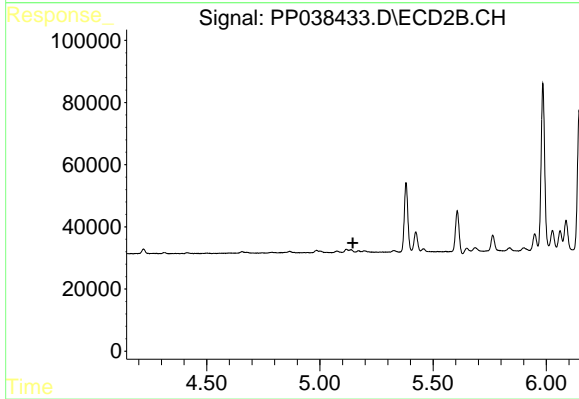
#16 AR-1242-1

R.T.: 0.000 min
 Exp R.T. : 5.126 min
 Response: 0
 Conc: N.D.



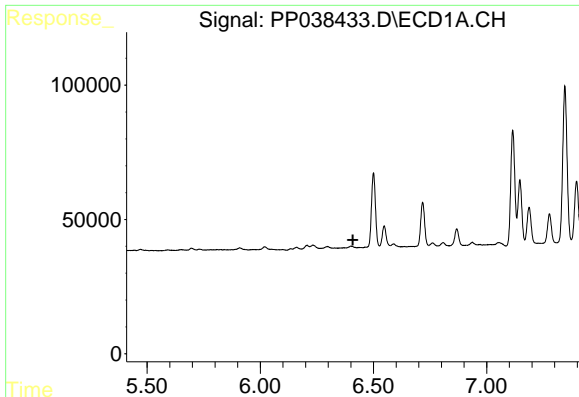
#17 AR-1242-2

R.T.: 6.207 min
 Delta R.T.: -0.028 min
 Response: 8125
 Conc: 5.05 ng/ml



#17 AR-1242-2

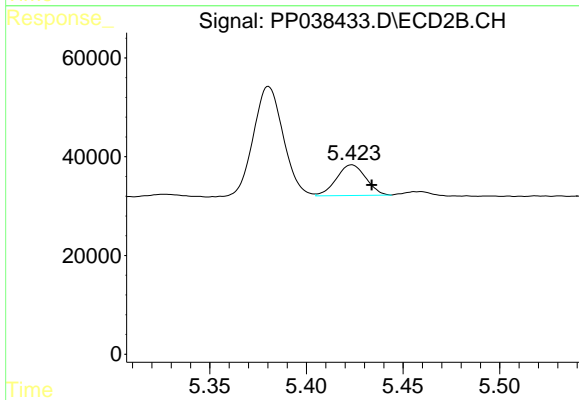
R.T.: 0.000 min
 Exp R.T. : 5.146 min
 Response: 0
 Conc: N.D.



#19 AR-1242-4

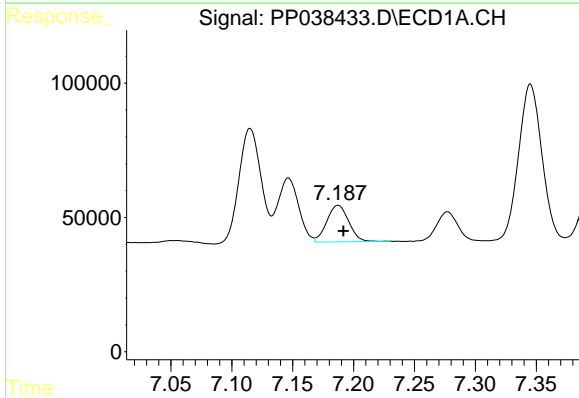
R.T.: 0.000 min
 Exp R.T. : 6.409 min
 Response: 0
 Conc: N.D.

Instrument :
 ECD_P
 ClientSampleId :
 AR1254CCC500



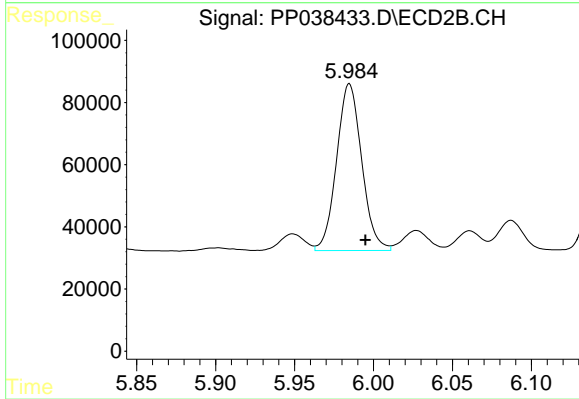
#19 AR-1242-4

R.T.: 5.424 min
 Delta R.T.: -0.010 min
 Response: 65716
 Conc: 125.08 ng/ml



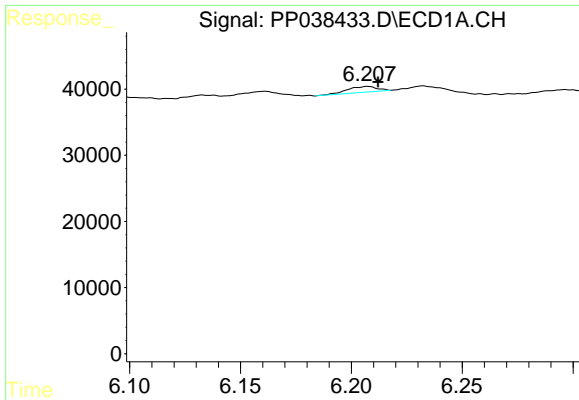
#20 AR-1242-5

R.T.: 7.187 min
 Delta R.T.: -0.004 min
 Response: 170494
 Conc: 206.76 ng/ml



#20 AR-1242-5

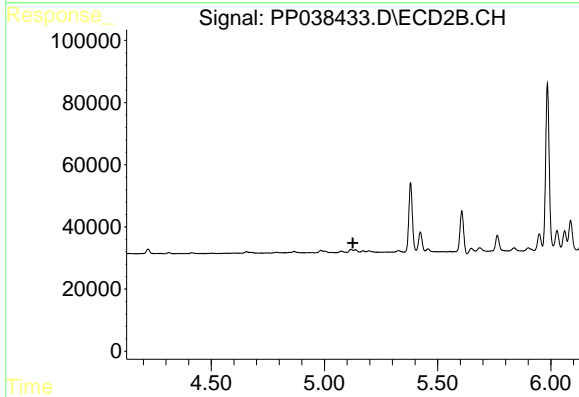
R.T.: 5.985 min
 Delta R.T.: -0.010 min
 Response: 594306
 Conc: 919.76 ng/ml



#21 AR-1248-1

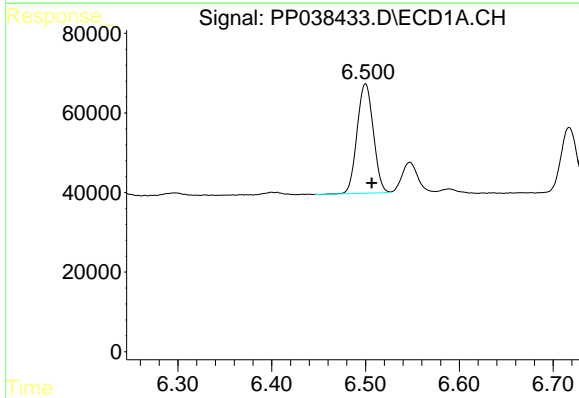
R.T.: 6.207 min
 Delta R.T.: -0.005 min
 Response: 8125
 Conc: 9.56 ng/ml

Instrument :
 ECD_P
ClientSampled :
 AR1254CCC500



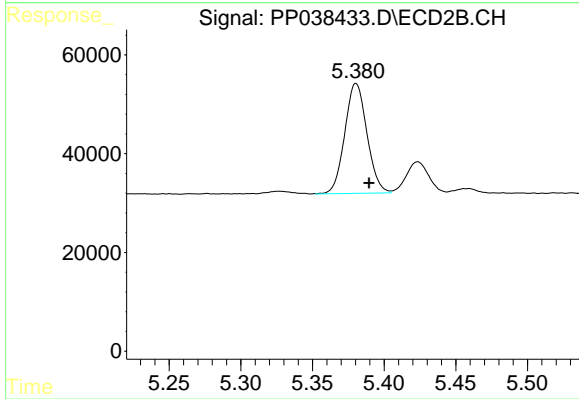
#21 AR-1248-1

R.T.: 0.000 min
 Exp R.T. : 5.126 min
 Response: 0
 Conc: N.D.



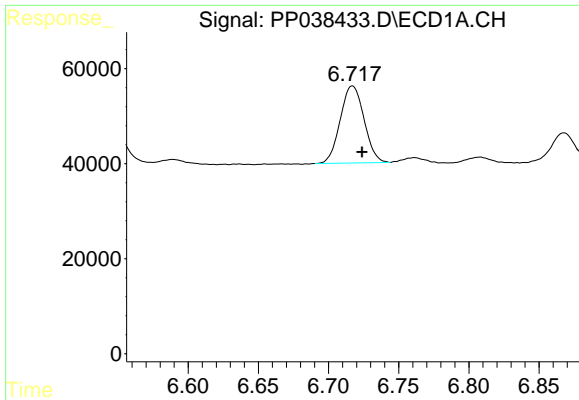
#22 AR-1248-2

R.T.: 6.500 min
 Delta R.T.: -0.006 min
 Response: 330698
 Conc: 305.89 ng/ml



#22 AR-1248-2

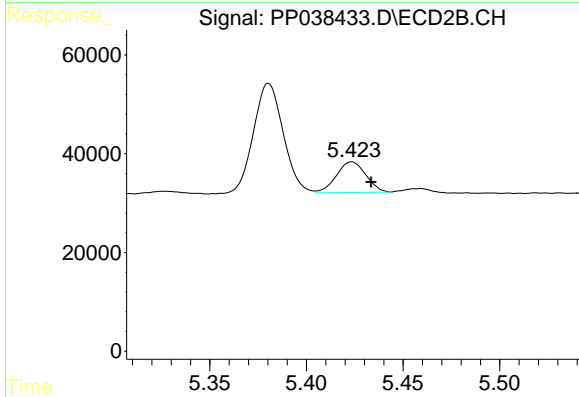
R.T.: 5.380 min
 Delta R.T.: -0.009 min
 Response: 239850
 Conc: 322.95 ng/ml



#23 AR-1248-3

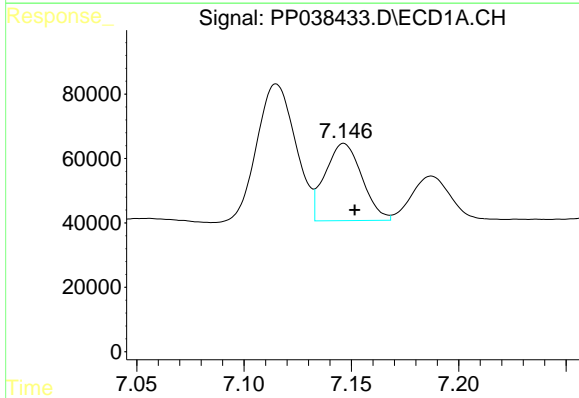
R.T.: 6.717 min
 Delta R.T.: -0.007 min
 Response: 191891
 Conc: 150.58 ng/ml

Instrument :
 ECD_P
ClientSampleId :
 AR1254CCC500



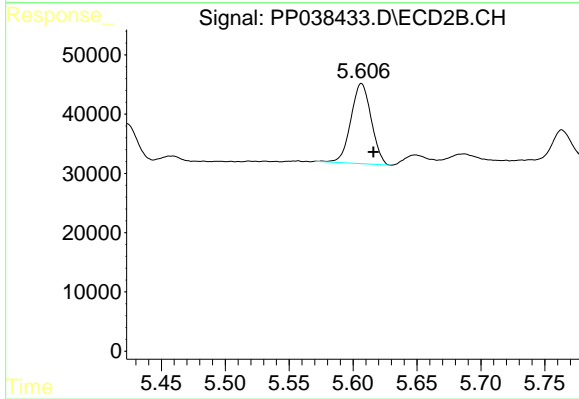
#23 AR-1248-3

R.T.: 5.424 min
 Delta R.T.: -0.010 min
 Response: 65716
 Conc: 83.52 ng/ml



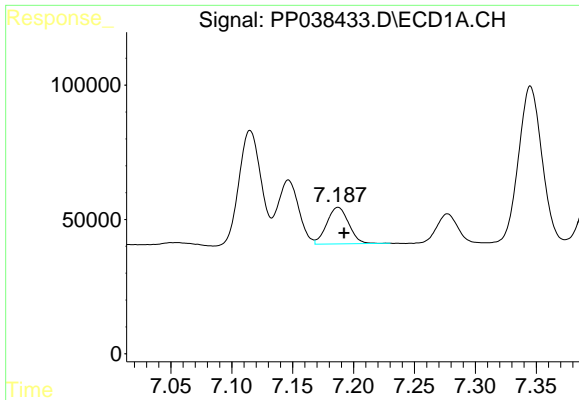
#24 AR-1248-4

R.T.: 7.146 min
 Delta R.T.: -0.005 min
 Response: 286874
 Conc: 212.48 ng/ml



#24 AR-1248-4

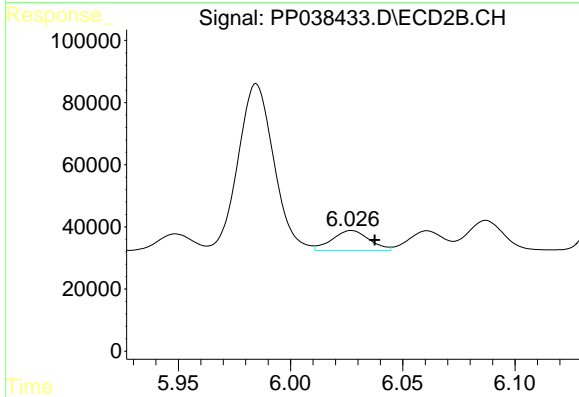
R.T.: 5.607 min
 Delta R.T.: -0.009 min
 Response: 149563
 Conc: 162.29 ng/ml



#25 AR-1248-5

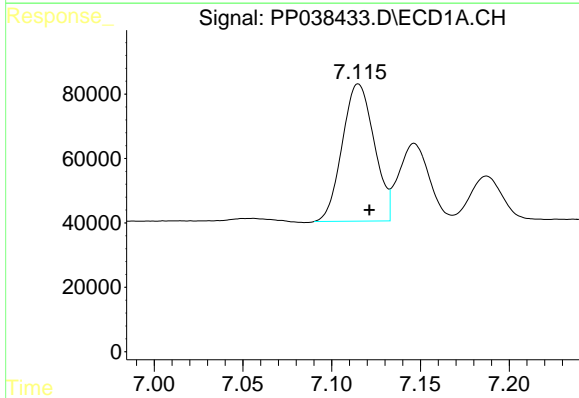
R.T.: 7.187 min
 Delta R.T.: -0.005 min
 Response: 170494
 Conc: 128.96 ng/ml

Instrument :
 ECD_P
ClientSampleId :
 AR1254CCC500



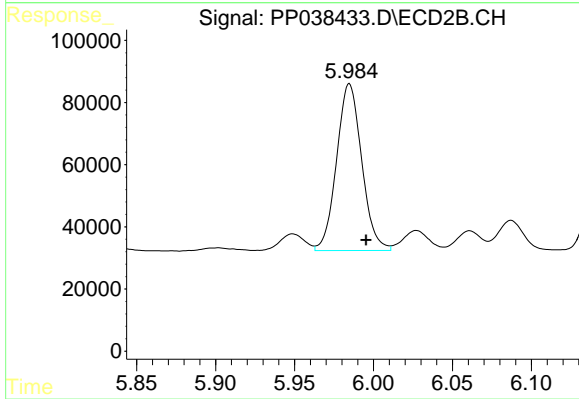
#25 AR-1248-5

R.T.: 6.027 min
 Delta R.T.: -0.010 min
 Response: 73873
 Conc: 78.47 ng/ml



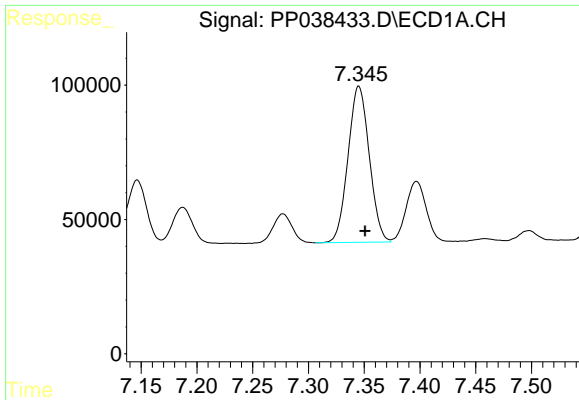
#26 AR-1254-1

R.T.: 7.115 min
 Delta R.T.: -0.006 min
 Response: 534393
 Conc: 410.12 ng/ml



#26 AR-1254-1

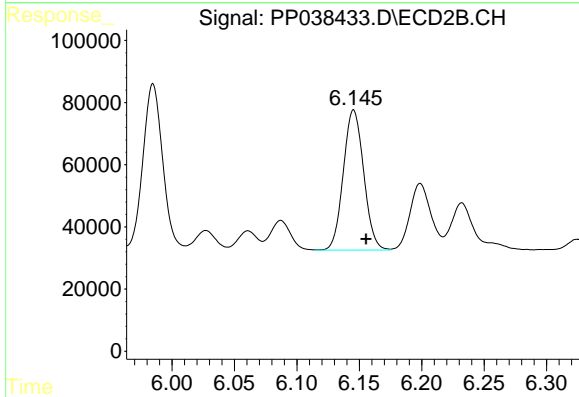
R.T.: 5.985 min
 Delta R.T.: -0.010 min
 Response: 594306
 Conc: 444.22 ng/ml



#27 AR-1254-2

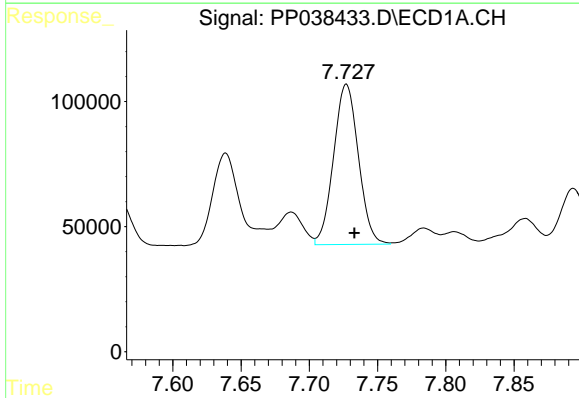
R.T.: 7.345 min
 Delta R.T.: -0.006 min
 Response: 770798
 Conc: 407.53 ng/ml

Instrument :
 ECD_P
 ClientSampleId :
 AR1254CCC500



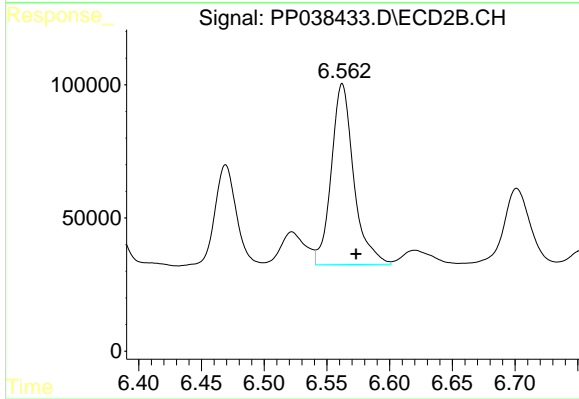
#27 AR-1254-2

R.T.: 6.145 min
 Delta R.T.: -0.010 min
 Response: 513400
 Conc: 447.95 ng/ml



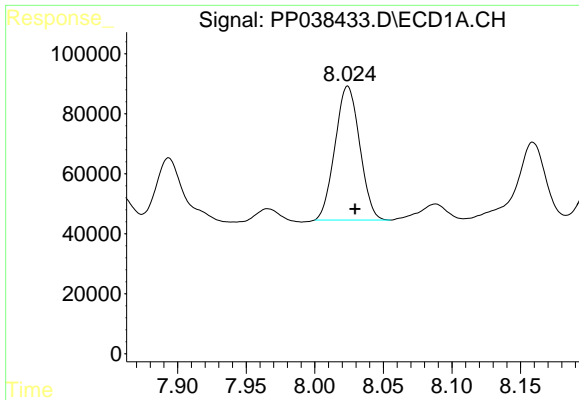
#28 AR-1254-3

R.T.: 7.727 min
 Delta R.T.: -0.006 min
 Response: 810173
 Conc: 408.37 ng/ml



#28 AR-1254-3

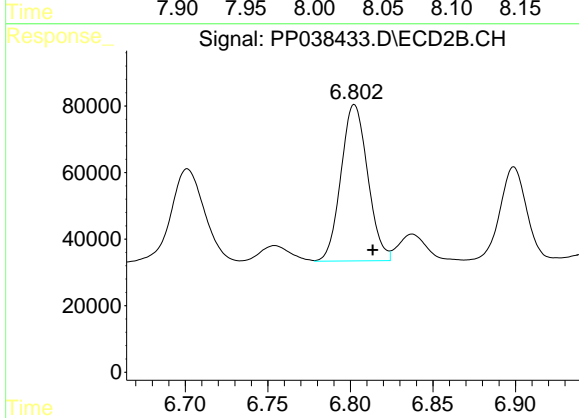
R.T.: 6.562 min
 Delta R.T.: -0.011 min
 Response: 843939
 Conc: 447.03 ng/ml



#29 AR-1254-4

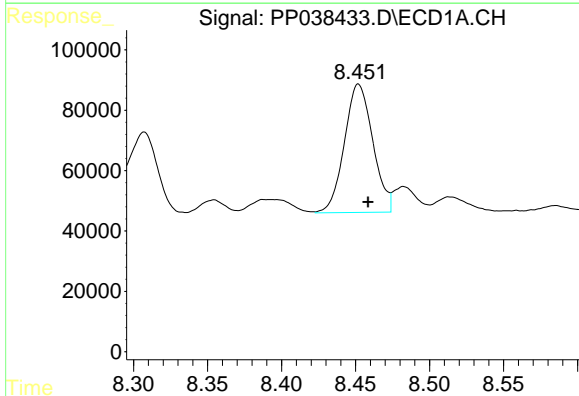
R.T.: 8.024 min
 Delta R.T.: -0.005 min
 Response: 558886
 Conc: 389.43 ng/ml

Instrument :
 ECD_P
 ClientSampleId :
 AR1254CCC500



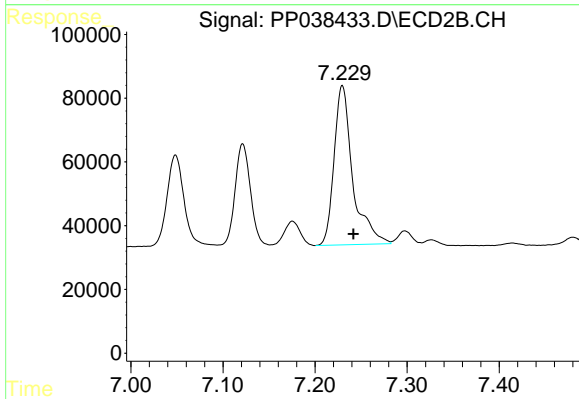
#29 AR-1254-4

R.T.: 6.802 min
 Delta R.T.: -0.011 min
 Response: 529269
 Conc: 439.59 ng/ml



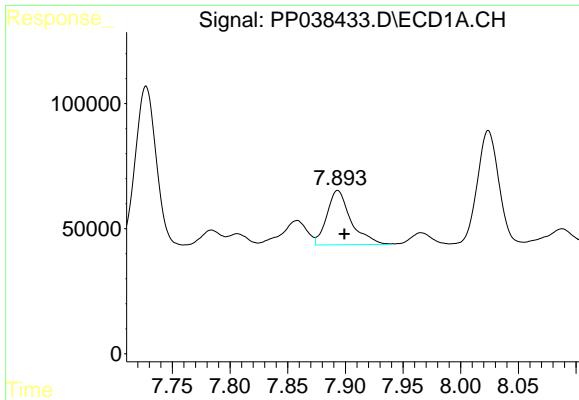
#30 AR-1254-5

R.T.: 8.452 min
 Delta R.T.: -0.006 min
 Response: 568749
 Conc: 391.36 ng/ml



#30 AR-1254-5

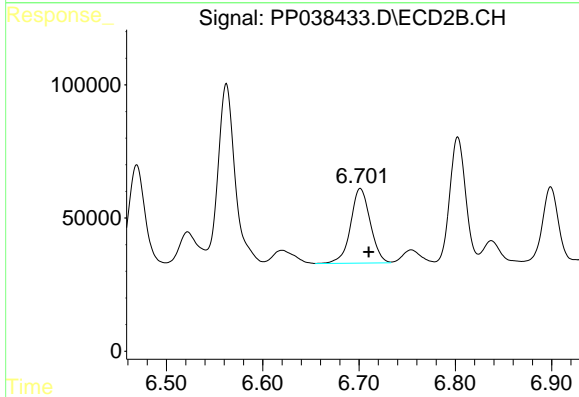
R.T.: 7.230 min
 Delta R.T.: -0.012 min
 Response: 705549
 Conc: 427.55 ng/ml



#31 AR-1260-1

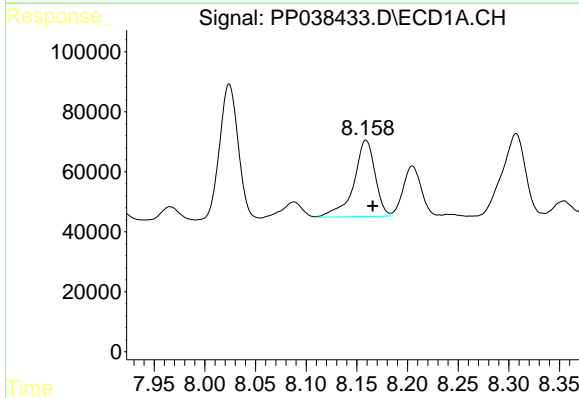
R.T.: 7.893 min
 Delta R.T.: -0.006 min
 Response: 315110
 Conc: 219.56 ng/ml

Instrument :
 ECD_P
ClientSampleId :
 AR1254CCC500



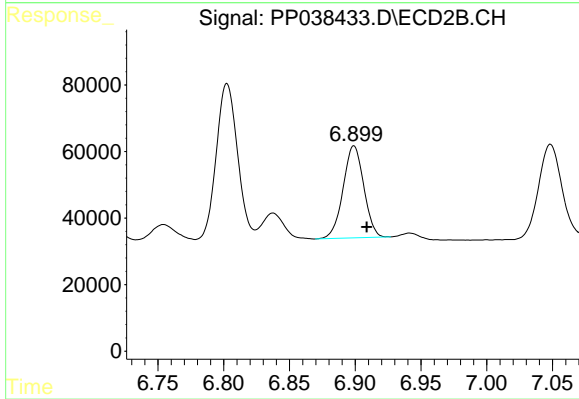
#31 AR-1260-1

R.T.: 6.701 min
 Delta R.T.: -0.009 min
 Response: 398726
 Conc: 306.24 ng/ml



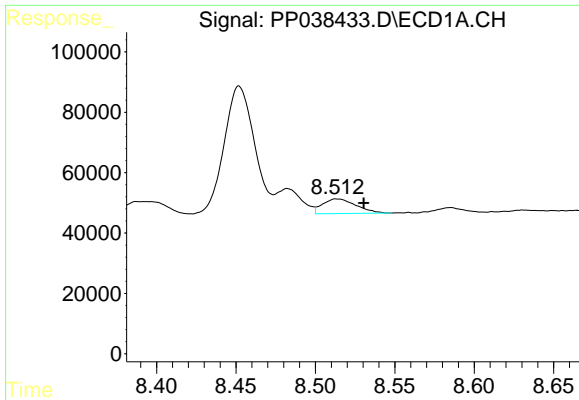
#32 AR-1260-2

R.T.: 8.159 min
 Delta R.T.: -0.007 min
 Response: 371100
 Conc: 215.55 ng/ml



#32 AR-1260-2

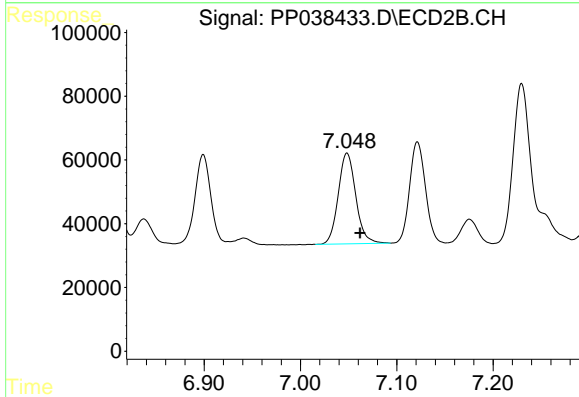
R.T.: 6.899 min
 Delta R.T.: -0.010 min
 Response: 302650
 Conc: 194.51 ng/ml



#33 AR-1260-3

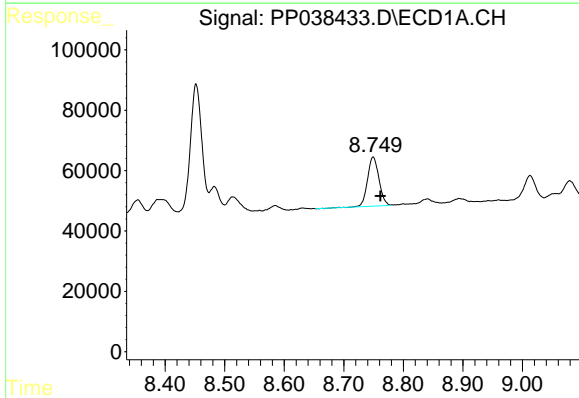
R.T.: 8.514 min
 Delta R.T.: -0.017 min
 Response: 70521
 Conc: 59.03 ng/ml

Instrument :
 ECD_P
ClientSampleId :
 AR1254CCC500



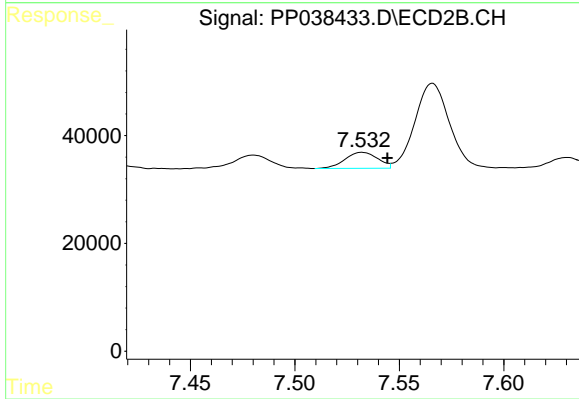
#33 AR-1260-3

R.T.: 7.048 min
 Delta R.T.: -0.013 min
 Response: 359031
 Conc: 235.86 ng/ml



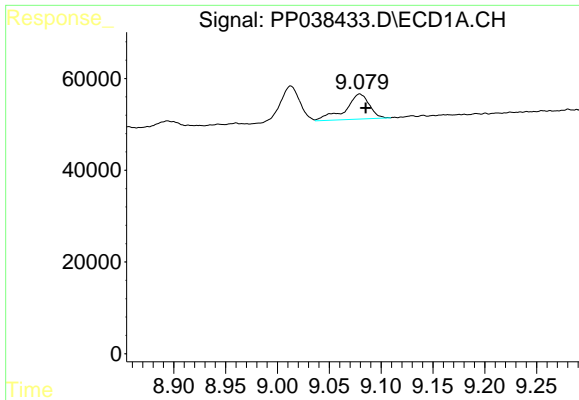
#34 AR-1260-4

R.T.: 8.749 min
 Delta R.T.: -0.012 min
 Response: 215221
 Conc: 151.11 ng/ml



#34 AR-1260-4

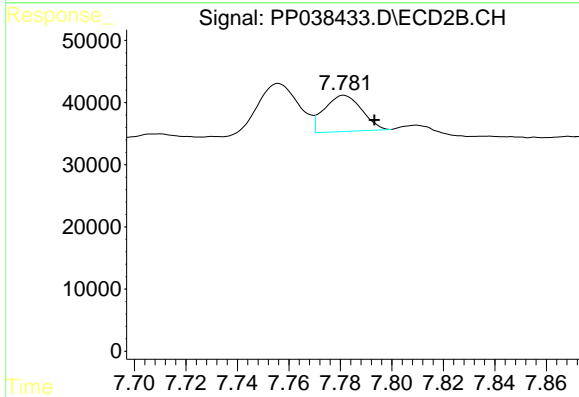
R.T.: 7.532 min
 Delta R.T.: -0.012 min
 Response: 32466
 Conc: 26.54 ng/ml



#35 AR-1260-5

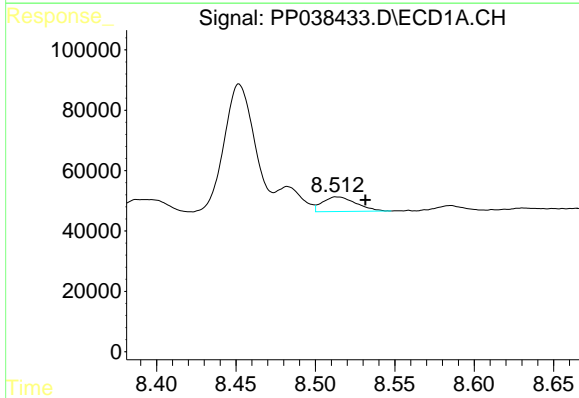
R.T.: 9.079 min
 Delta R.T.: -0.006 min
 Response: 88023
 Conc: 33.15 ng/ml

Instrument :
 ECD_P
 ClientSampleId :
 AR1254CCC500



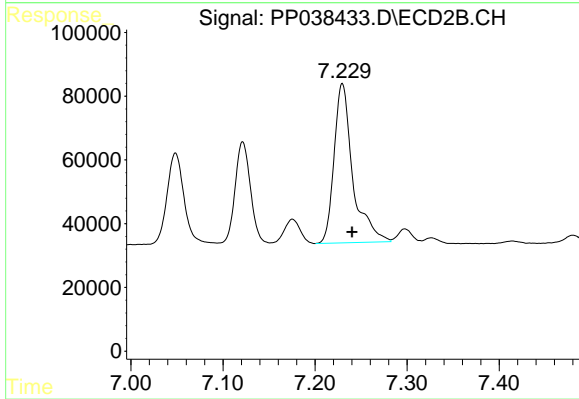
#35 AR-1260-5

R.T.: 7.781 min
 Delta R.T.: -0.012 min
 Response: 58538
 Conc: 20.04 ng/ml



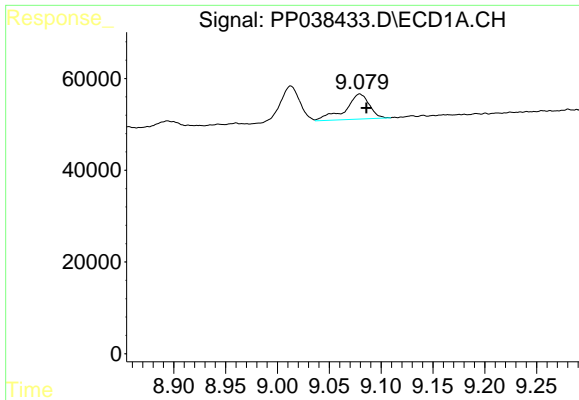
#36 AR-1262-1

R.T.: 8.514 min
 Delta R.T.: -0.018 min
 Response: 70521
 Conc: 42.93 ng/ml



#36 AR-1262-1

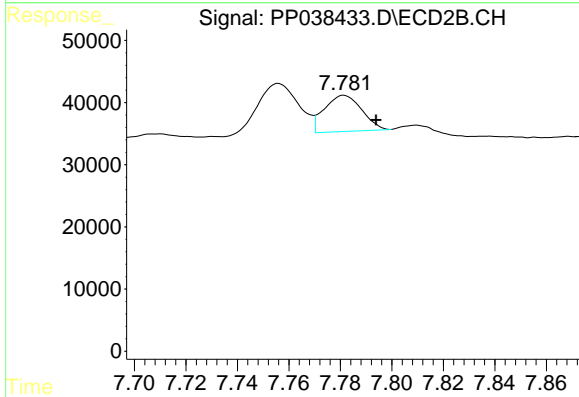
R.T.: 7.230 min
 Delta R.T.: -0.010 min
 Response: 705549
 Conc: 771.92 ng/ml



#37 AR-1262-2

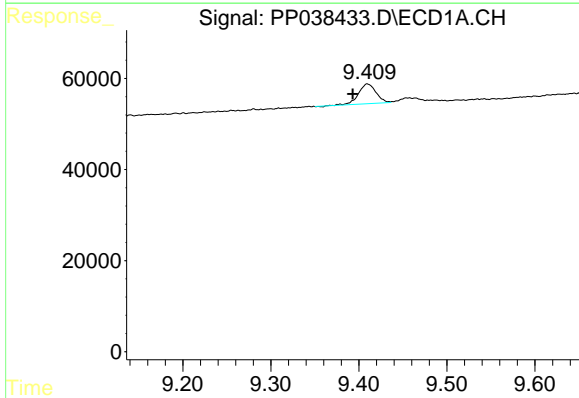
R.T.: 9.079 min
 Delta R.T.: -0.007 min
 Response: 88023
 Conc: 30.97 ng/ml

Instrument :
 ECD_P
ClientSampleId :
 AR1254CCC500



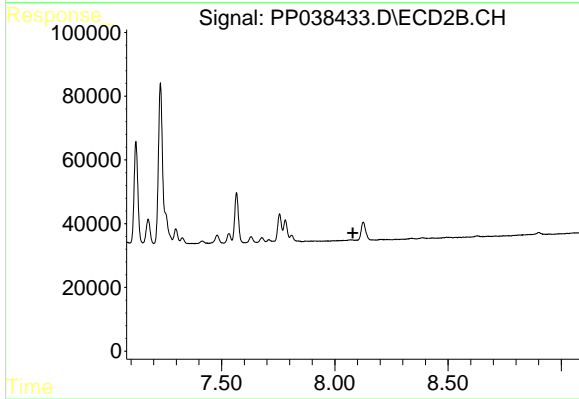
#37 AR-1262-2

R.T.: 7.781 min
 Delta R.T.: -0.012 min
 Response: 58538
 Conc: 18.92 ng/ml



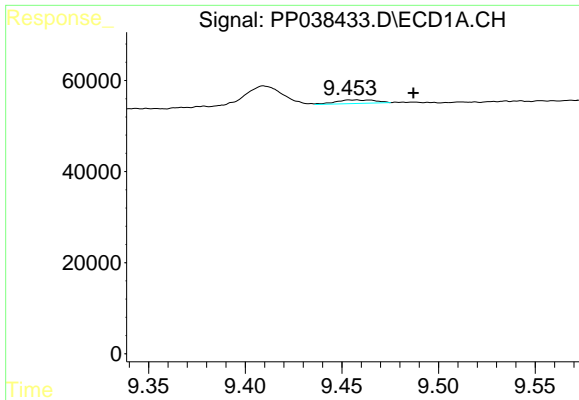
#38 AR-1262-3

R.T.: 9.410 min
 Delta R.T.: 0.017 min
 Response: 60404
 Conc: 51.00 ng/ml



#38 AR-1262-3

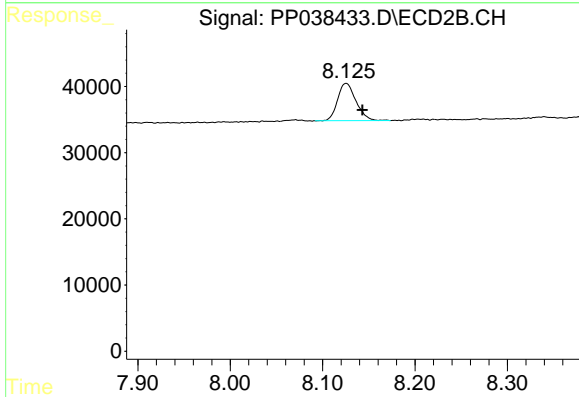
R.T.: 0.000 min
 Exp R.T. : 8.079 min
 Response: 0
 Conc: N.D.



#39 AR-1262-4

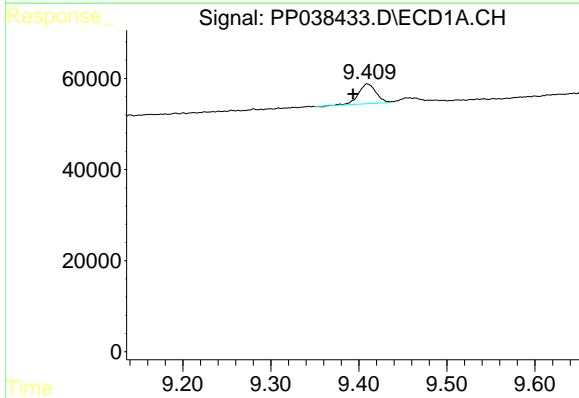
R.T.: 9.457 min
 Delta R.T.: -0.030 min
 Response: 11274
 Conc: 14.73 ng/ml

Instrument :
 ECD_P
 ClientSampleId :
 AR1254CCC500



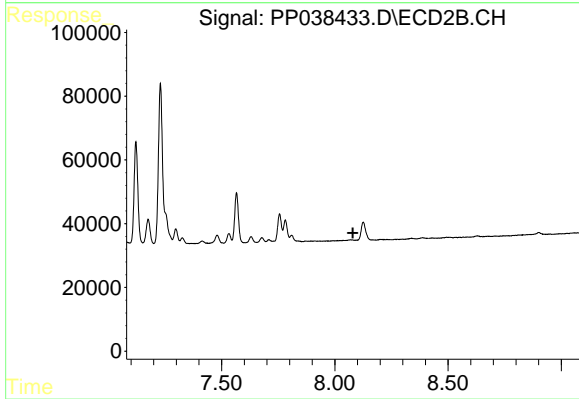
#39 AR-1262-4

R.T.: 8.125 min
 Delta R.T.: -0.018 min
 Response: 78277
 Conc: 33.06 ng/ml



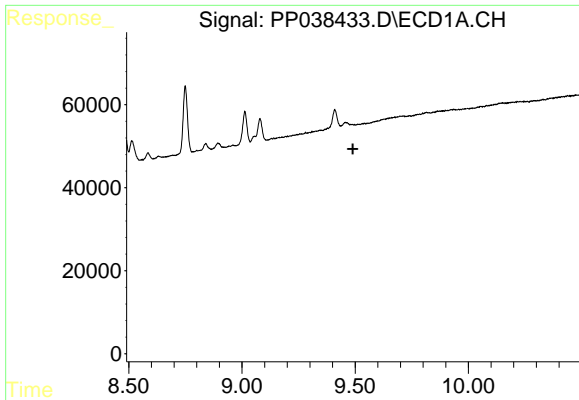
#41 AR-1268-1

R.T.: 9.410 min
 Delta R.T.: 0.016 min
 Response: 60404
 Conc: 18.49 ng/ml



#41 AR-1268-1

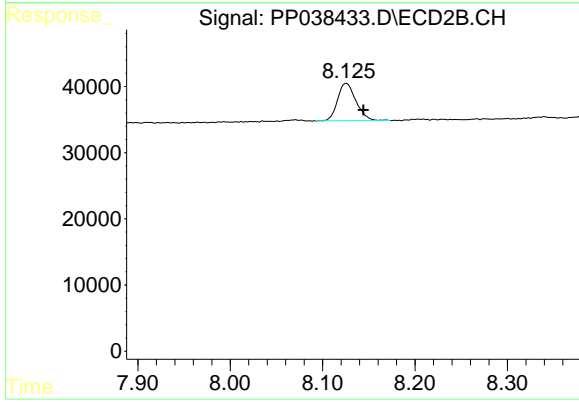
R.T.: 0.000 min
 Exp R.T. : 8.080 min
 Response: 0
 Conc: N.D.



#42 AR-1268-2

R.T.: 0.000 min
Exp R.T.: 9.490 min
Response: 0
Conc: N.D.

Instrument :
ECD_P
ClientSampleId :
AR1254CCC500



#42 AR-1268-2

R.T.: 8.125 min
Delta R.T.: -0.019 min
Response: 78277
Conc: 22.91 ng/ml