

Data Path : Z:\pestpcbsrv\HPCHEM1\ECD\_P\Data\PP081621\  
 Data File : PP038437.D  
 Signal(s) : Signal #1: ECD1A.CH Signal #2: ECD2B.CH  
 Acq On : 16 Aug 2021 18:16  
 Operator : AJ\MA  
 Sample : M3419-19  
 Misc :  
 ALS Vial : 19 Sample Multiplier: 1

Instrument :  
 ECD\_P  
 ClientSampleId :  
 SWCS-08-1015

Integration File signal 1: autoint1.e  
 Integration File signal 2: autoint2.e  
 Quant Time: Aug 17 02:19:14 2021  
 Quant Method : Z:\pestpcbsrv\HPCHEM1\ECD\_P\methods\PP080521.M  
 Quant Title : GC EXTRACTABLES  
 QLast Update : Fri Aug 06 03:08:47 2021  
 Response via : Initial Calibration  
 Integrator: ChemStation 6890 Scale Mode: Small noise peaks clipped

Volume Inj. : 2 µl  
 Signal #1 Phase : ZB-MR1 Signal #2 Phase: ZB-MR2  
 Signal #1 Info : 30Mx0.32mmx 0.50µ Signal #2 Info : 30M x 0.32mm x 0.25µm

	Compound	RT#1	RT#2	Resp#1	Resp#2	ng/ml	ng/ml
-----							
System Monitoring Compounds							
1)	SA Tetrachlo...	4.888	3.873	900037	528972	20.252	20.538
2)	SA Decachlor...	10.877	9.135	504075	502338	22.159	19.416
Target Compounds							
8)	L2 AR-1221-1	5.138	0.000	21604	0	39.857	N.D. #
33)	L7 AR-1260-3	0.000	7.059	0	32929	N.D.	21.632 #
-----							

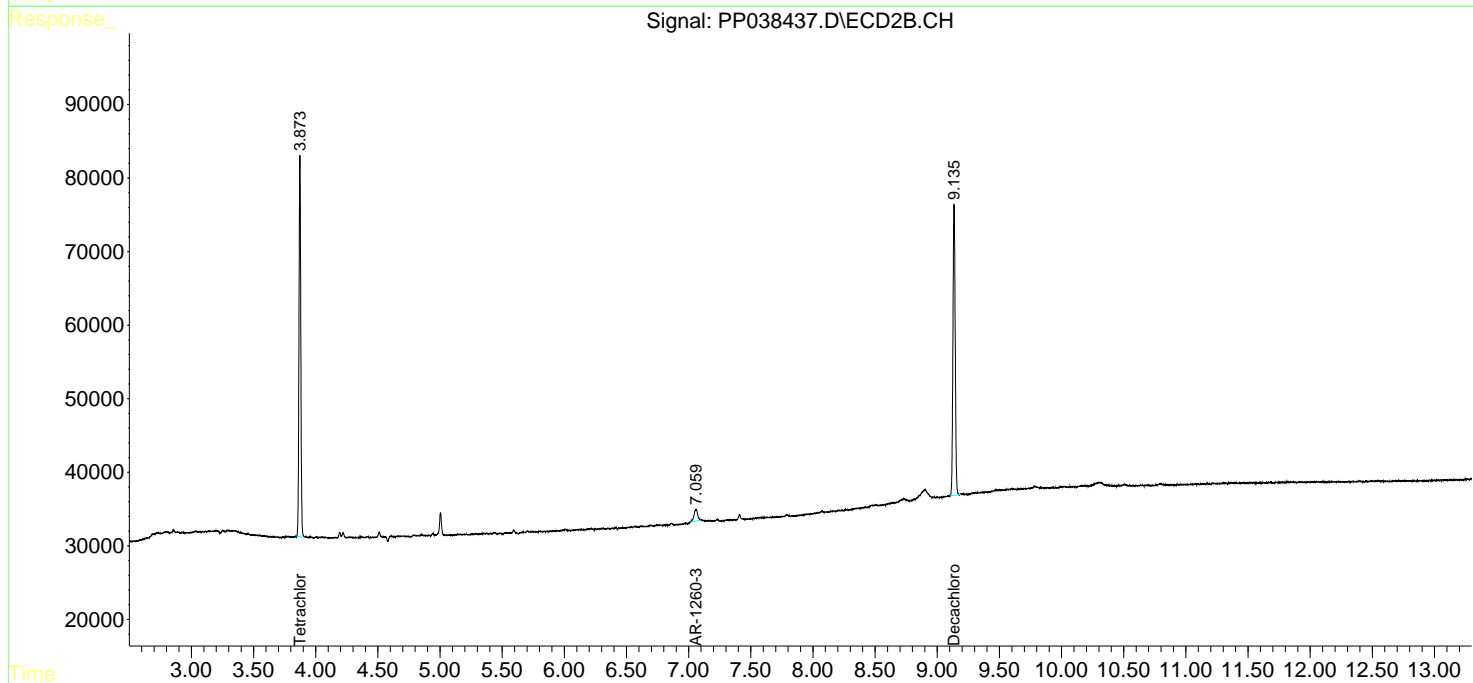
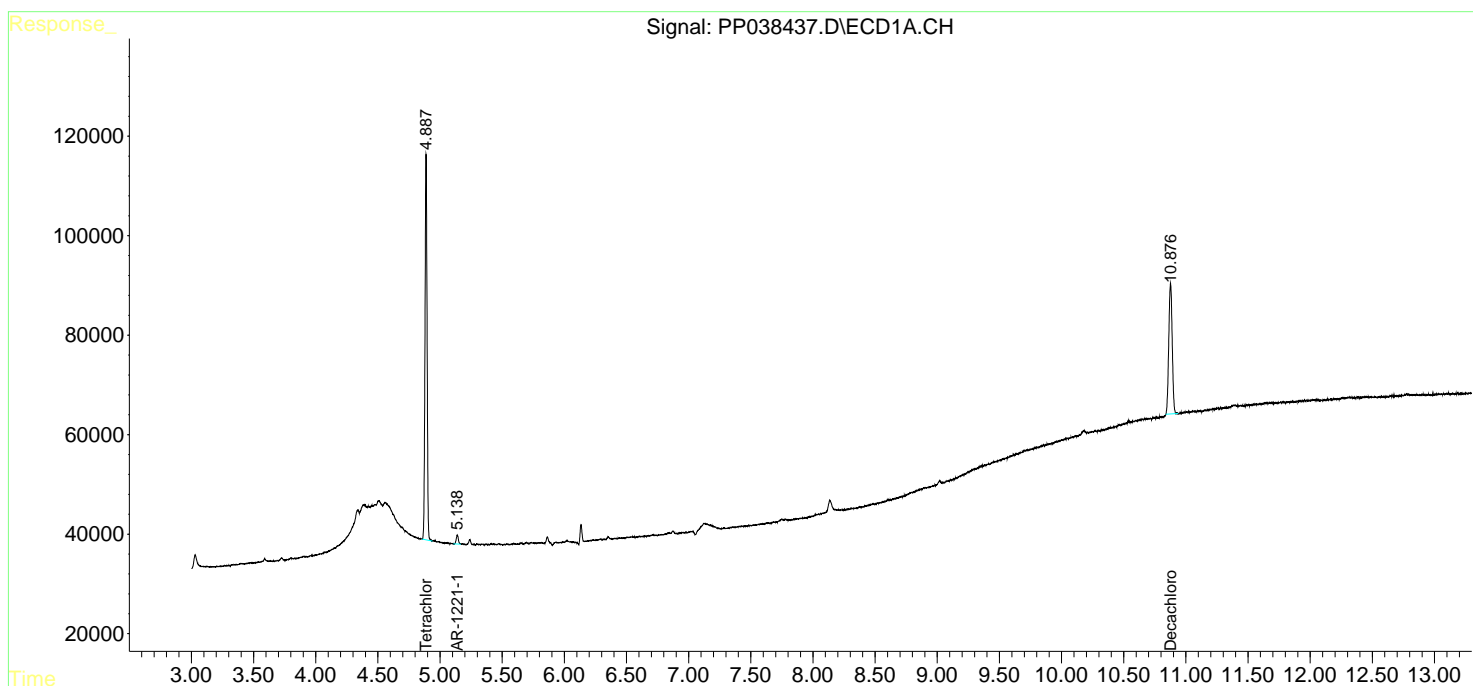
(f)=RT Delta > 1/2 Window (#)=Amounts differ by > 25% (m)=manual int.

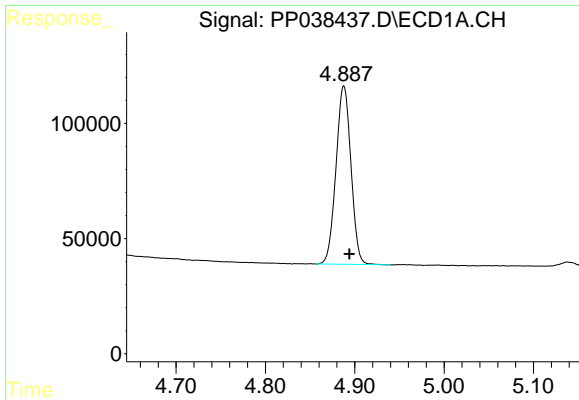
Data Path : Z:\pestpcbsrv\HPCHEM1\ECD\_P\Data\PP081621\  
Data File : PP038437.D  
Signal(s) : Signal #1: ECD1A.CH Signal #2: ECD2B.CH  
Acq On : 16 Aug 2021 18:16  
Operator : AJ\MA  
Sample : M3419-19  
Misc :  
ALS Vial : 19 Sample Multiplier: 1

Instrument :  
ECD\_P  
ClientSampleId :  
SWCS-08-1015

Integration File signal 1: autoint1.e  
Integration File signal 2: autoint2.e  
Quant Time: Aug 17 02:19:14 2021  
Quant Method : Z:\pestpcbsrv\HPCHEM1\ECD\_P\methods\PP080521.M  
Quant Title : GC EXTRACTABLES  
QLast Update : Fri Aug 06 03:08:47 2021  
Response via : Initial Calibration  
Integrator: ChemStation 6890 Scale Mode: Small noise peaks clipped

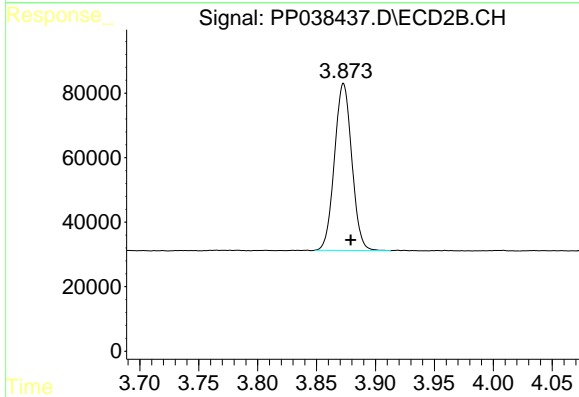
Volume Inj. : 2 µl  
Signal #1 Phase : ZB-MR1 Signal #2 Phase: ZB-MR2  
Signal #1 Info : 30Mx0.32mmx 0.50µ Signal #2 Info : 30M x 0.32mm x 0.25µm



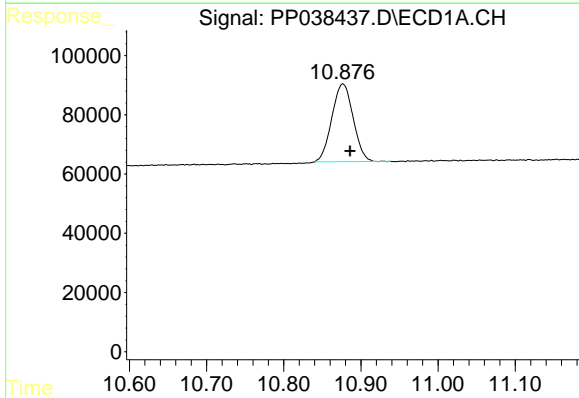


#1 Tetrachloro-m-xylene  
 R.T.: 4.888 min  
 Delta R.T.: -0.006 min  
 Response: 900037  
 Conc: 20.25 ng/ml

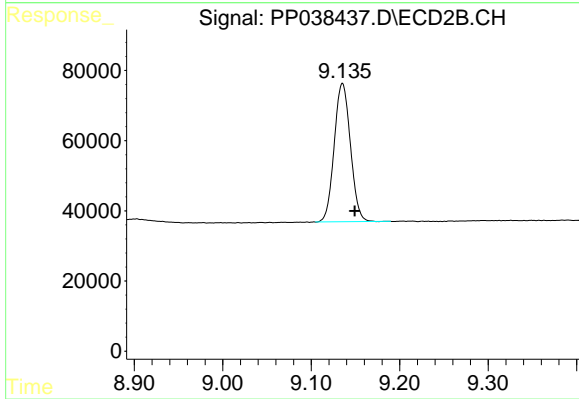
**Instrument :**  
 ECD\_P  
**ClientSampleId :**  
 SWCS-08-1015



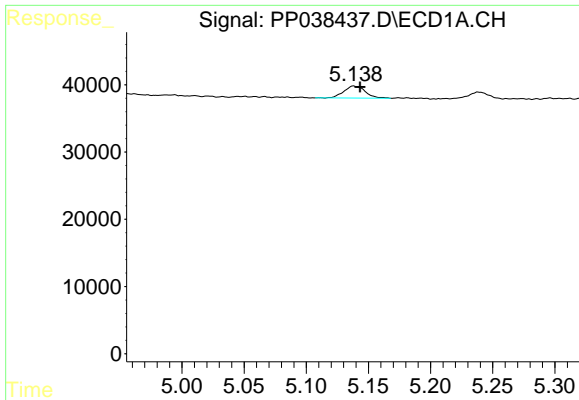
#1 Tetrachloro-m-xylene  
 R.T.: 3.873 min  
 Delta R.T.: -0.006 min  
 Response: 528972  
 Conc: 20.54 ng/ml



#2 Decachlorobiphenyl  
 R.T.: 10.877 min  
 Delta R.T.: -0.009 min  
 Response: 504075  
 Conc: 22.16 ng/ml



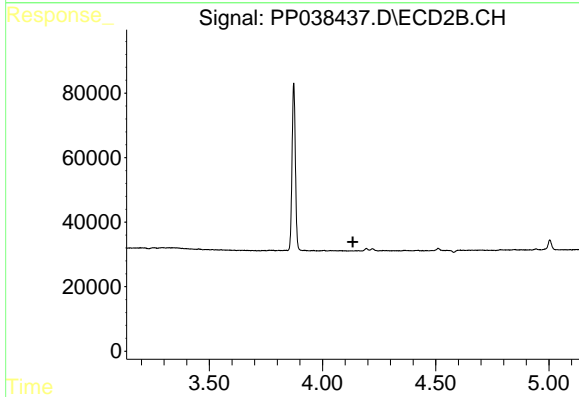
#2 Decachlorobiphenyl  
 R.T.: 9.135 min  
 Delta R.T.: -0.014 min  
 Response: 502338  
 Conc: 19.42 ng/ml



#8 AR-1221-1

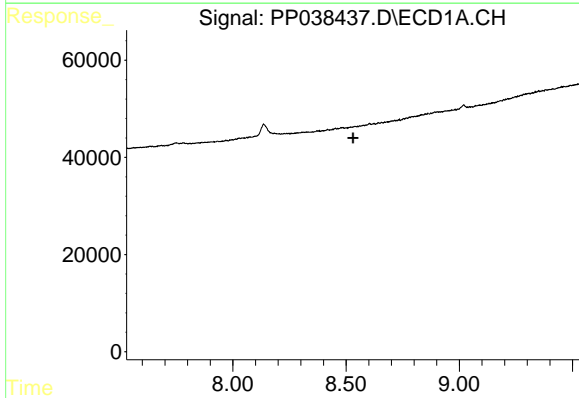
R.T.: 5.138 min  
 Delta R.T.: -0.005 min  
 Response: 21604  
 Conc: 39.86 ng/ml

**Instrument :**  
 ECD\_P  
**ClientSampled :**  
 SWCS-08-1015



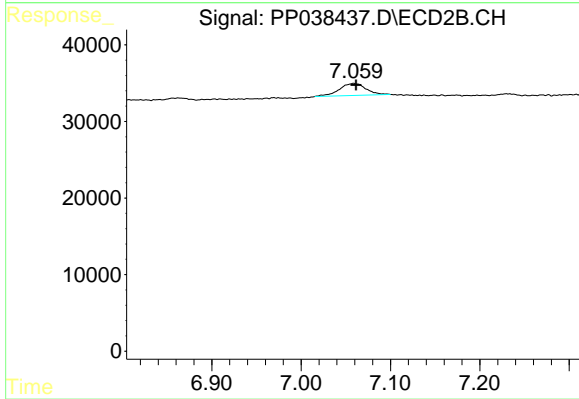
#8 AR-1221-1

R.T.: 0.000 min  
 Exp R.T. : 4.134 min  
 Response: 0  
 Conc: N.D.



#33 AR-1260-3

R.T.: 0.000 min  
 Exp R.T. : 8.530 min  
 Response: 0  
 Conc: N.D.



#33 AR-1260-3

R.T.: 7.059 min  
 Delta R.T.: -0.003 min  
 Response: 32929  
 Conc: 21.63 ng/ml