

Data Path : Z:\pestpcbsrv\HPCHEM1\ECD_P\Data\PP081621\
 Data File : PP038465.D
 Signal(s) : Signal #1: ECD1A.CH Signal #2: ECD2B.CH
 Acq On : 17 Aug 2021 3:00
 Operator : AJ\MA
 Sample : AR1268CCC500
 Misc :
 ALS Vial : 7 Sample Multiplier: 1

Instrument :
 ECD_P
 ClientSampleId :
 AR1268CCC500

Integration File signal 1: autoint1.e
 Integration File signal 2: autoint2.e
 Quant Time: Aug 17 06:17:59 2021
 Quant Method : Z:\pestpcbsrv\HPCHEM1\ECD_P\methods\PP080521.M
 Quant Title : GC EXTRACTABLES
 QLast Update : Fri Aug 06 03:08:47 2021
 Response via : Initial Calibration
 Integrator: ChemStation 6890 Scale Mode: Small noise peaks clipped

Volume Inj. : 2 µl
 Signal #1 Phase : ZB-MR2 Signal #2 Phase: ZB-MR2
 Signal #1 Info : 30Mx0.32mmx 0.50µ Signal #2 Info : 30M x 0.32mm x 0.25µm

Compound	RT#1	RT#2	Resp#1	Resp#2	ng/ml	ng/ml
System Monitoring Compounds						
1) SA Tetrachlo...	4.887	3.872	2155534	1297634	48.503	50.383
2) SA Decachlor...	10.873	9.133f	2110033	2168016	92.755	83.794
Target Compounds						
9) L2 AR-1221-2	5.238	4.220	28102	17649	69.539	74.988
30) L6 AR-1254-5	0.000	7.271f	0	310737	N.D.	188.303 #
33) L7 AR-1260-3	8.524	7.052	299173	43502	250.432	28.578 #
34) L7 AR-1260-4	8.771	7.529f	366547	412157	257.352	336.897 #
35) L7 AR-1260-5	9.078	7.781	158380	173788	59.652	59.508
36) L8 AR-1262-1	8.524	0.000	299173	0	182.122	N.D. #
37) L8 AR-1262-2	9.078	7.781	158380	173788	55.728	56.158
38) L8 AR-1262-3	9.384	8.066	1551740	1756913	1310.231	1388.774
39) L8 AR-1262-4	9.480	8.132	1495032	1667144	1953.927	704.052 #
40) L8 AR-1262-5	10.138	8.627	579684	618266	584.602	550.921
41) L9 AR-1268-1	9.384	8.066	1551740	1756913	474.941	484.153
42) L9 AR-1268-2	9.480	8.132	1495032	1667144	488.764	487.979
43) L9 AR-1268-3	9.702	8.337	1297910	1410316	511.638	494.967
44) L9 AR-1268-4	10.138	8.627	579684	618266	525.324	488.523
45) L9 AR-1268-5	10.545	8.900	4504481	4682807	536.711	493.420

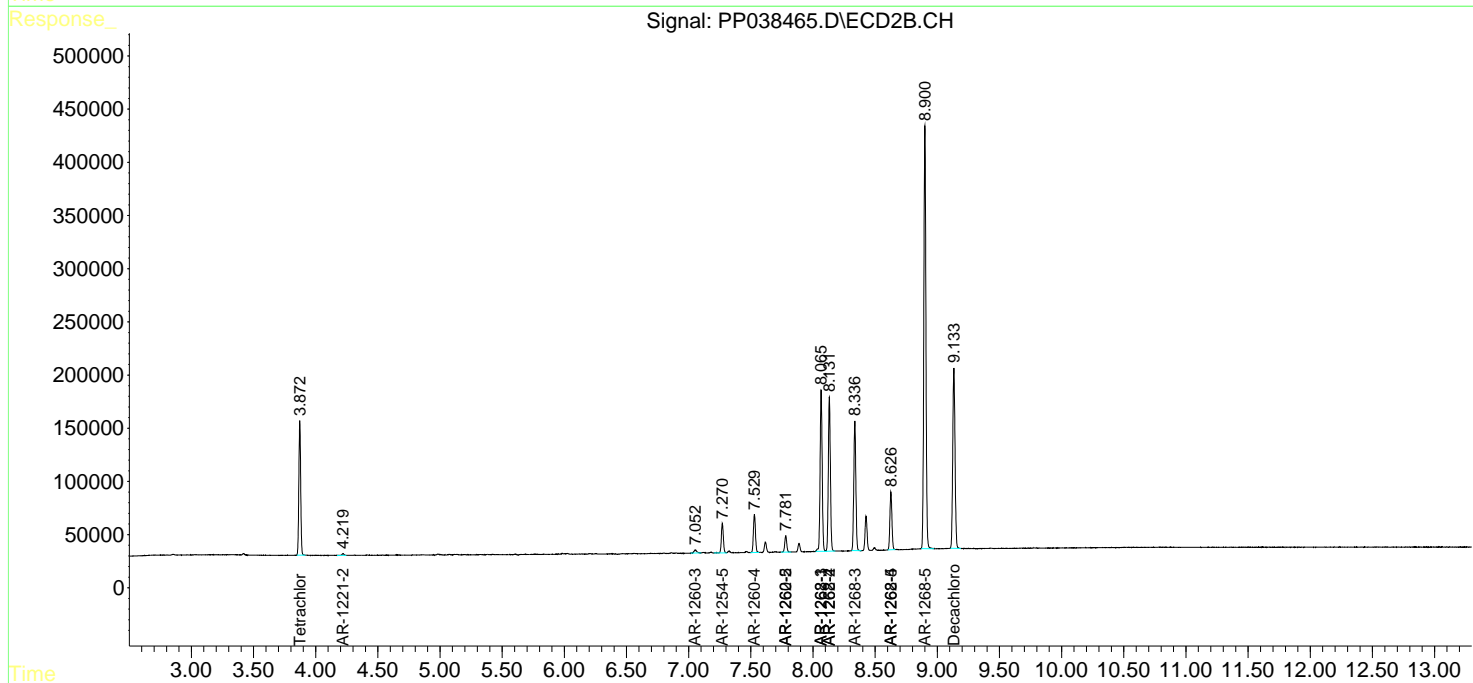
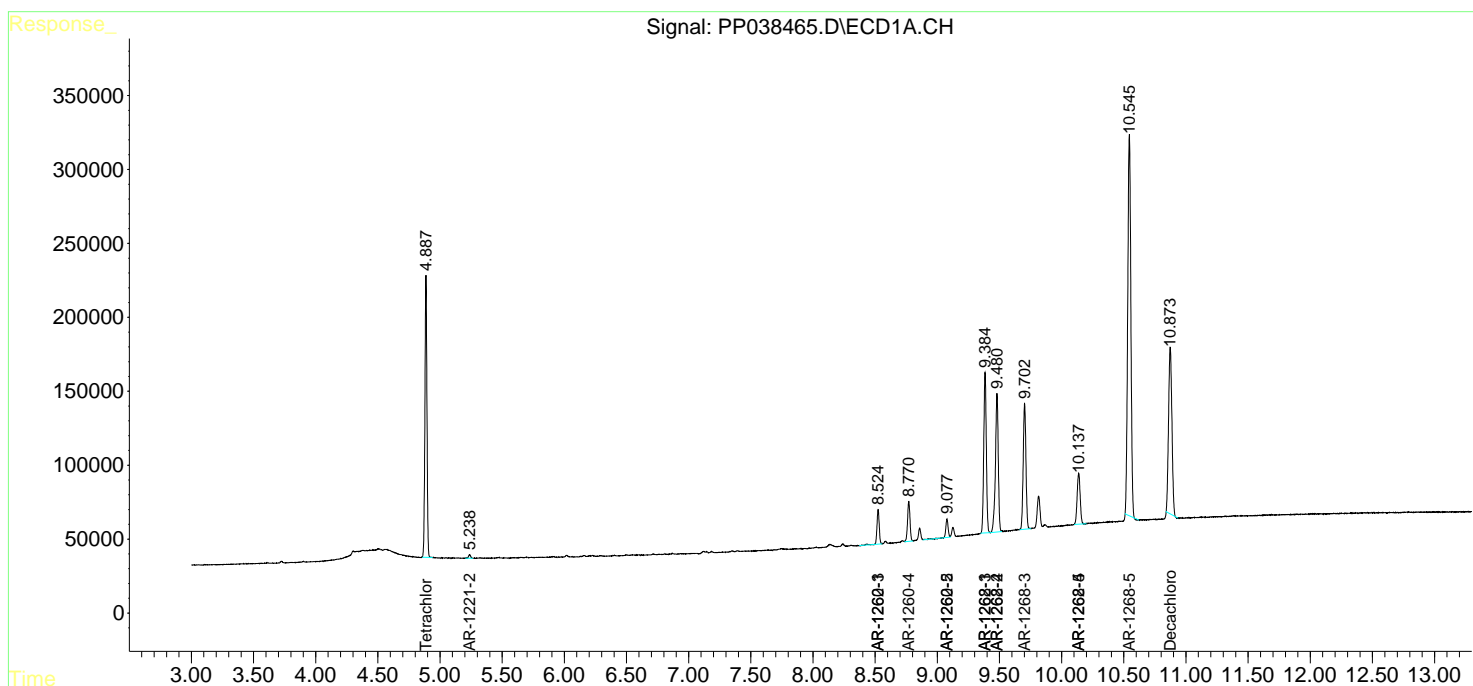
(f)=RT Delta > 1/2 Window (#)=Amounts differ by > 25% (m)=manual int.

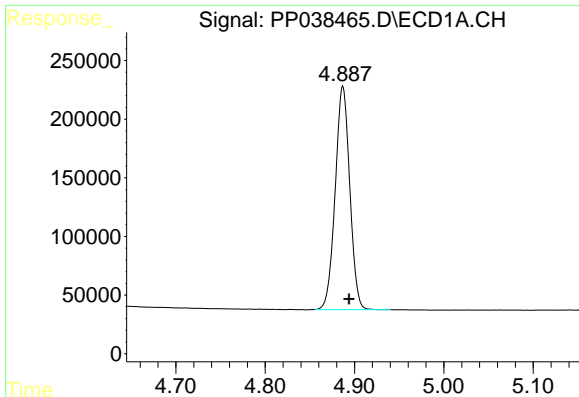
Data Path : Z:\pestpcbsrv\HPCHEM1\ECD_P\Data\PP081621\
 Data File : PP038465.D
 Signal(s) : Signal #1: ECD1A.CH Signal #2: ECD2B.CH
 Acq On : 17 Aug 2021 3:00
 Operator : AJ\MA
 Sample : AR1268CCC500
 Misc :
 ALS Vial : 7 Sample Multiplier: 1

Instrument :
 ECD_P
 Client Sampled :
 AR1268CCC500

Integration File signal 1: autoint1.e
 Integration File signal 2: autoint2.e
 Quant Time: Aug 17 06:17:59 2021
 Quant Method : Z:\pestpcbsrv\HPCHEM1\ECD_P\methods\PP080521.M
 Quant Title : GC EXTRACTABLES
 QLast Update : Fri Aug 06 03:08:47 2021
 Response via : Initial Calibration
 Integrator: ChemStation 6890 Scale Mode: Small noise peaks clipped

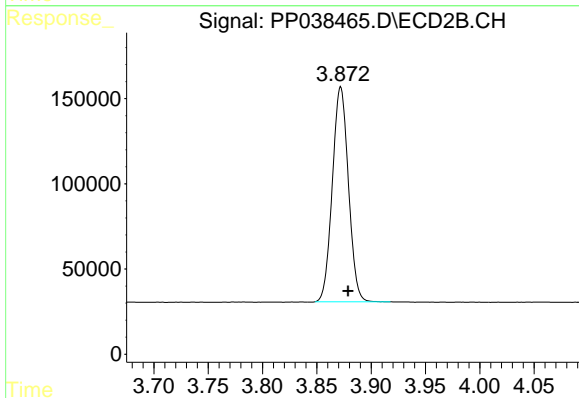
Volume Inj. : 2 µl
 Signal #1 Phase : ZB-MR1 Signal #2 Phase: ZB-MR2
 Signal #1 Info : 30Mx0.32mmx 0.50µ Signal #2 Info : 30M x 0.32mm x 0.25µm



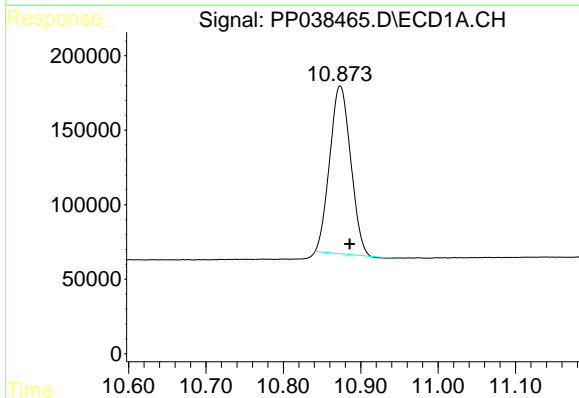


#1 Tetrachloro-m-xylene
 R.T.: 4.887 min
 Delta R.T.: -0.007 min
 Response: 2155534
 Conc: 48.50 ng/ml

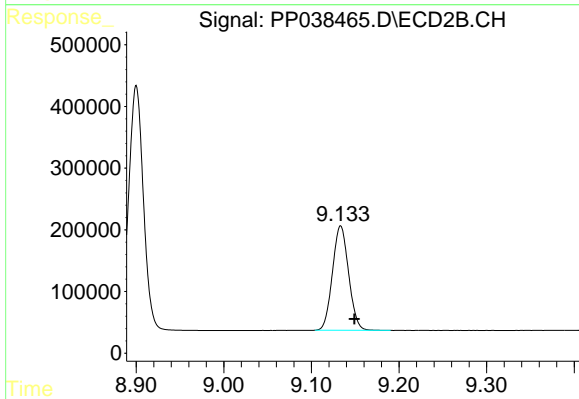
Instrument :
 ECD_P
 ClientSampleId :
 AR1268CCC500



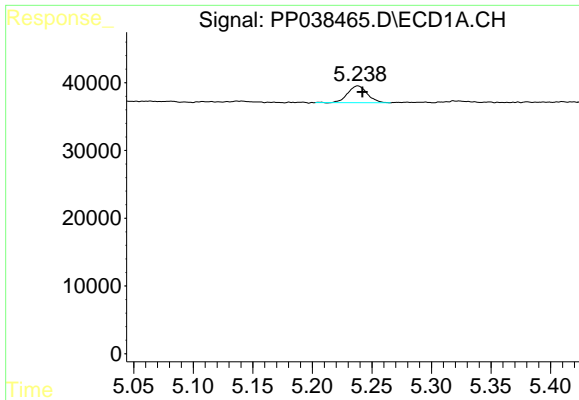
#1 Tetrachloro-m-xylene
 R.T.: 3.872 min
 Delta R.T.: -0.007 min
 Response: 1297634
 Conc: 50.38 ng/ml



#2 Decachlorobiphenyl
 R.T.: 10.873 min
 Delta R.T.: -0.012 min
 Response: 2110033
 Conc: 92.75 ng/ml



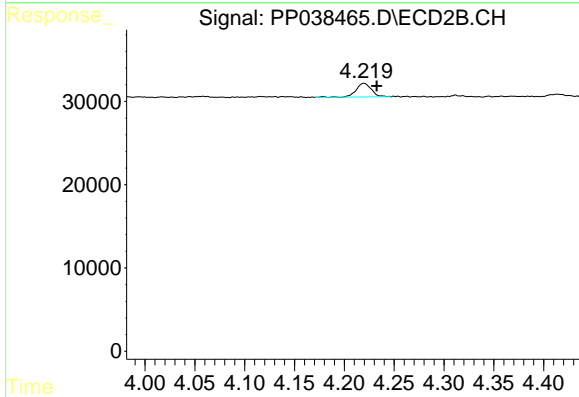
#2 Decachlorobiphenyl
 R.T.: 9.133 min
 Delta R.T.: -0.016 min
 Response: 2168016
 Conc: 83.79 ng/ml



#9 AR-1221-2

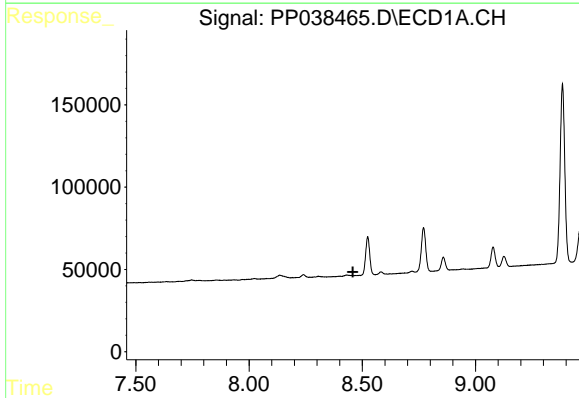
R.T.: 5.238 min
 Delta R.T.: -0.004 min
 Response: 28102
 Conc: 69.54 ng/ml

Instrument :
 ECD_P
ClientSampleId :
 AR1268CCC500



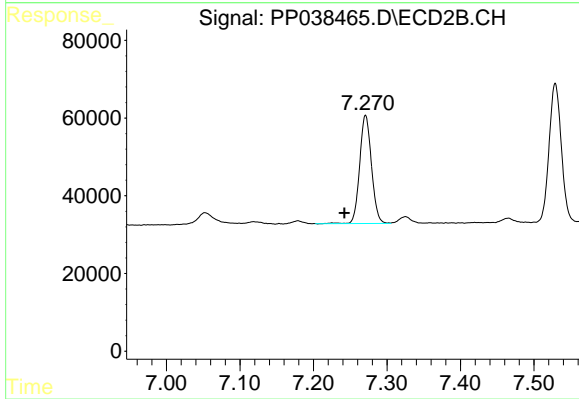
#9 AR-1221-2

R.T.: 4.220 min
 Delta R.T.: -0.013 min
 Response: 17649
 Conc: 74.99 ng/ml



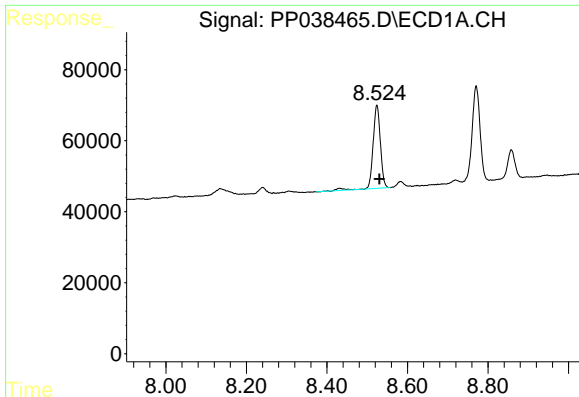
#30 AR-1254-5

R.T.: 0.000 min
 Exp R.T. : 8.458 min
 Response: 0
 Conc: N.D.



#30 AR-1254-5

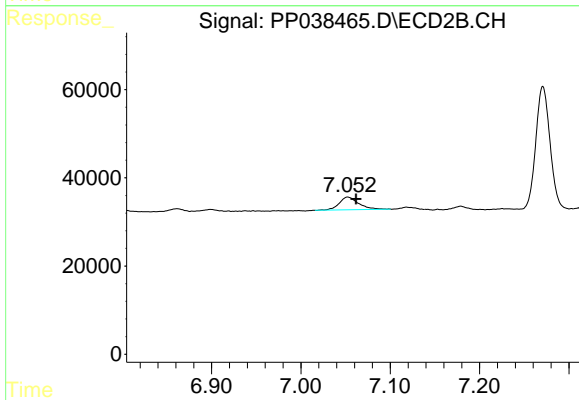
R.T.: 7.271 min
 Delta R.T.: 0.029 min
 Response: 310737
 Conc: 188.30 ng/ml



#33 AR-1260-3

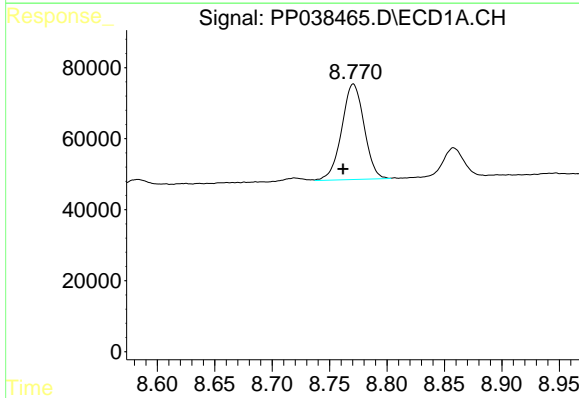
R.T.: 8.524 min
 Delta R.T.: -0.006 min
 Response: 299173
 Conc: 250.43 ng/ml

Instrument :
 ECD_P
 ClientSampleId :
 AR1268CCC500



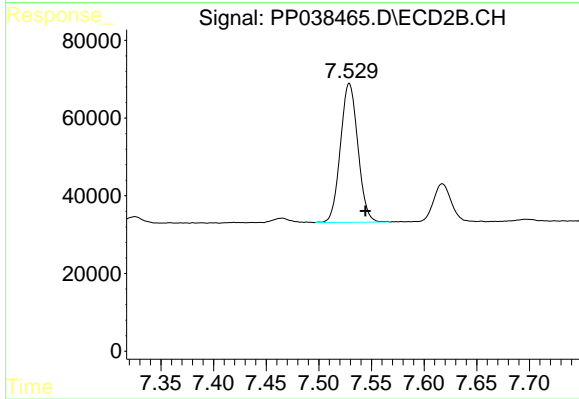
#33 AR-1260-3

R.T.: 7.052 min
 Delta R.T.: -0.009 min
 Response: 43502
 Conc: 28.58 ng/ml



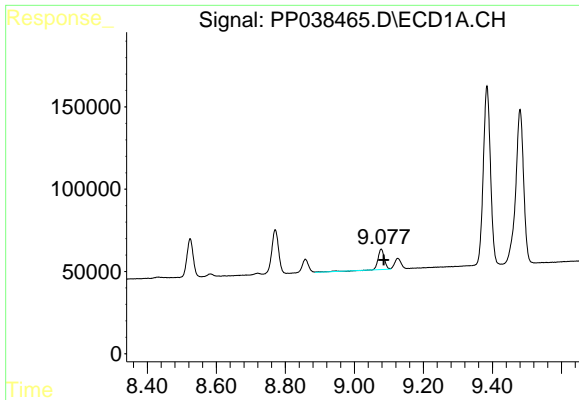
#34 AR-1260-4

R.T.: 8.771 min
 Delta R.T.: 0.009 min
 Response: 366547
 Conc: 257.35 ng/ml



#34 AR-1260-4

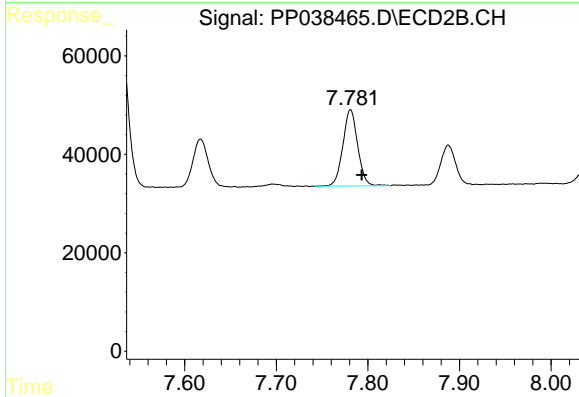
R.T.: 7.529 min
 Delta R.T.: -0.015 min
 Response: 412157
 Conc: 336.90 ng/ml



#35 AR-1260-5

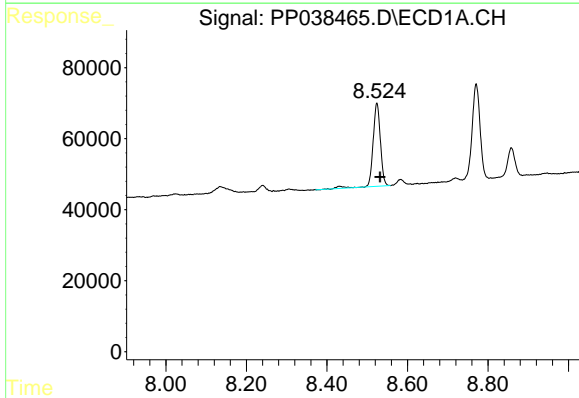
R.T.: 9.078 min
 Delta R.T.: -0.008 min
 Response: 158380
 Conc: 59.65 ng/ml

Instrument :
 ECD_P
 ClientSampleId :
 AR1268CCC500



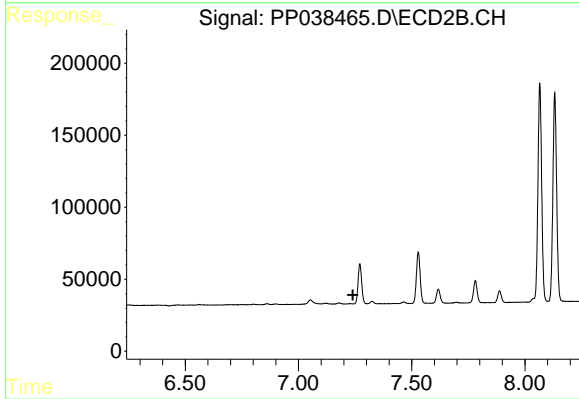
#35 AR-1260-5

R.T.: 7.781 min
 Delta R.T.: -0.012 min
 Response: 173788
 Conc: 59.51 ng/ml



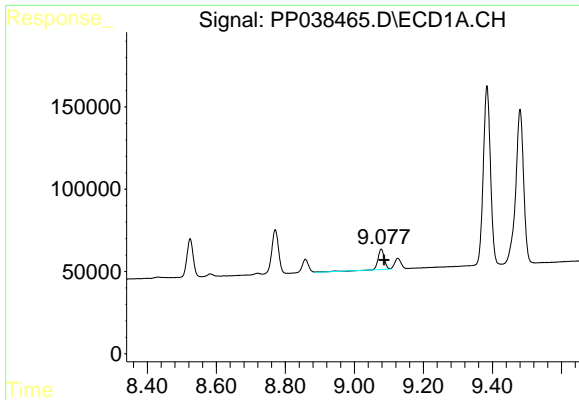
#36 AR-1262-1

R.T.: 8.524 min
 Delta R.T.: -0.007 min
 Response: 299173
 Conc: 182.12 ng/ml



#36 AR-1262-1

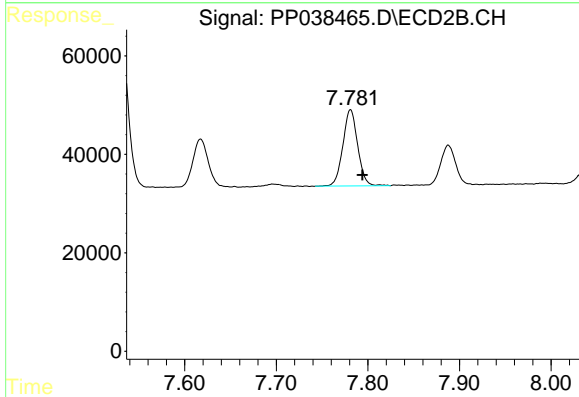
R.T.: 0.000 min
 Exp R.T.: 7.240 min
 Response: 0
 Conc: N.D.



#37 AR-1262-2

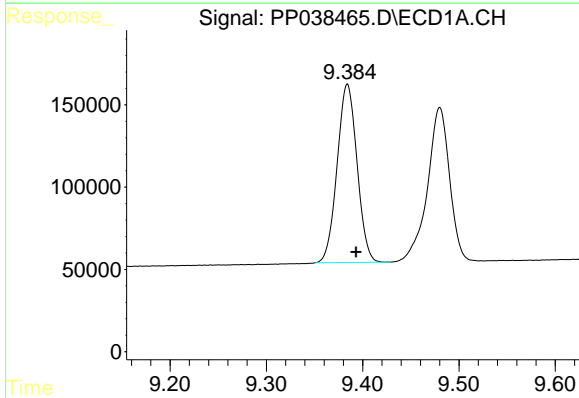
R.T.: 9.078 min
 Delta R.T.: -0.008 min
 Response: 158380
 Conc: 55.73 ng/ml

Instrument :
 ECD_P
ClientSampled :
 AR1268CCC500



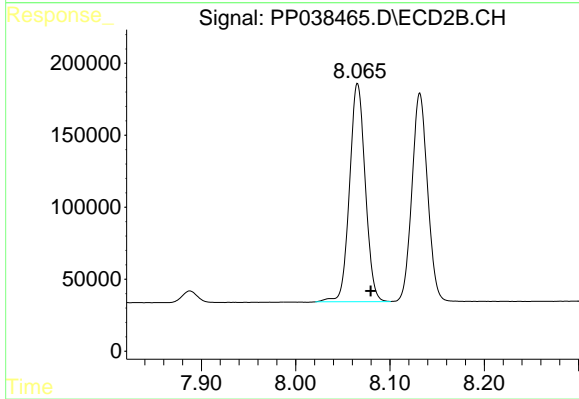
#37 AR-1262-2

R.T.: 7.781 min
 Delta R.T.: -0.013 min
 Response: 173788
 Conc: 56.16 ng/ml



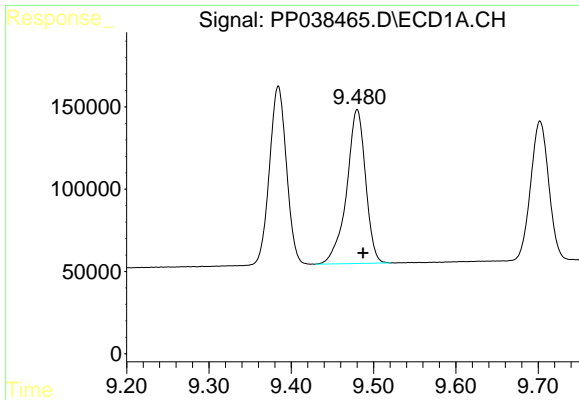
#38 AR-1262-3

R.T.: 9.384 min
 Delta R.T.: -0.009 min
 Response: 1551740
 Conc: 1310.23 ng/ml



#38 AR-1262-3

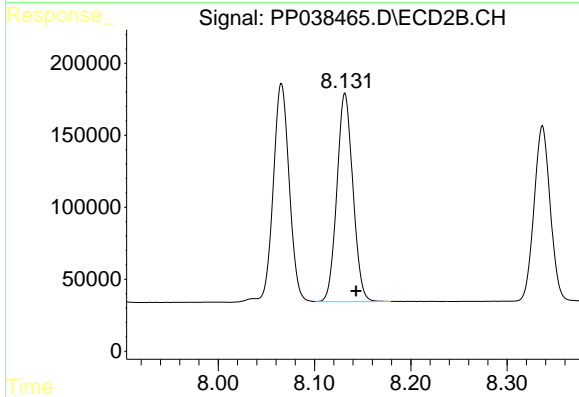
R.T.: 8.066 min
 Delta R.T.: -0.014 min
 Response: 1756913
 Conc: 1388.77 ng/ml



#39 AR-1262-4

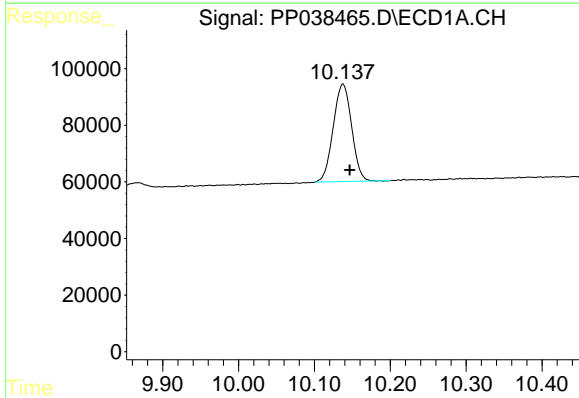
R.T.: 9.480 min
 Delta R.T.: -0.007 min
 Response: 1495032
 Conc: 1953.93 ng/ml

Instrument :
 ECD_P
ClientSampled :
 AR1268CCC500



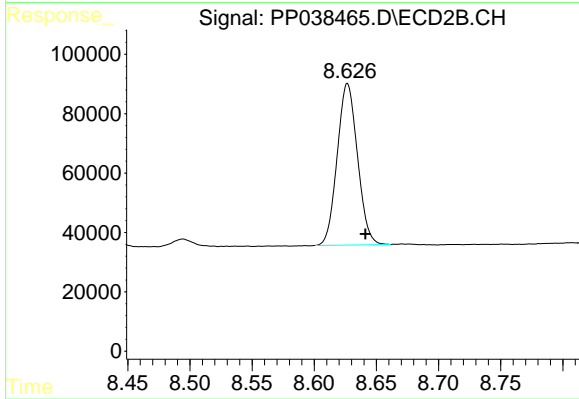
#39 AR-1262-4

R.T.: 8.132 min
 Delta R.T.: -0.011 min
 Response: 1667144
 Conc: 704.05 ng/ml



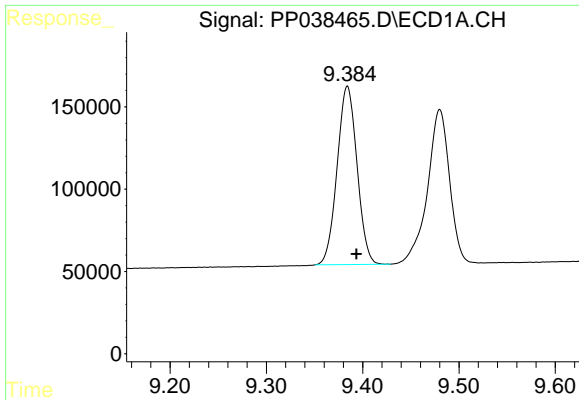
#40 AR-1262-5

R.T.: 10.138 min
 Delta R.T.: -0.009 min
 Response: 579684
 Conc: 584.60 ng/ml



#40 AR-1262-5

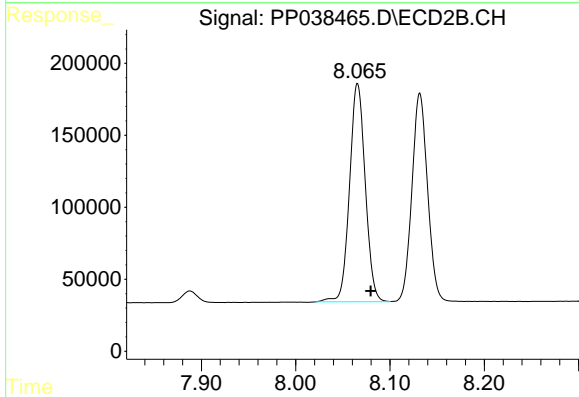
R.T.: 8.627 min
 Delta R.T.: -0.015 min
 Response: 618266
 Conc: 550.92 ng/ml



#41 AR-1268-1

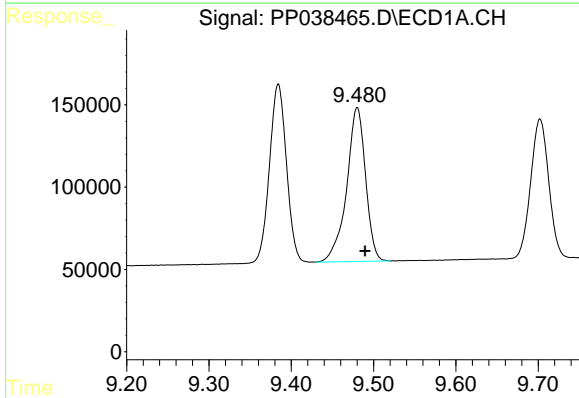
R.T.: 9.384 min
 Delta R.T.: -0.009 min
 Response: 1551740
 Conc: 474.94 ng/ml

Instrument :
 ECD_P
 ClientSampled :
 AR1268CCC500



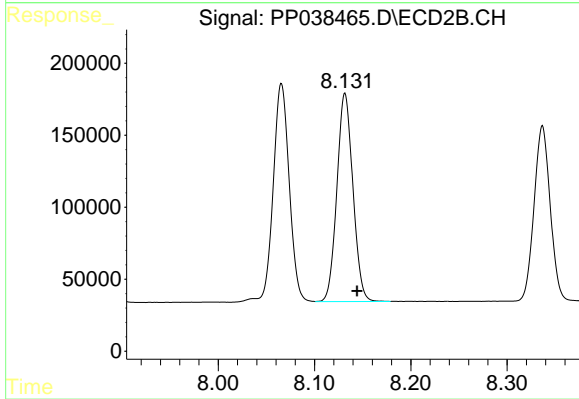
#41 AR-1268-1

R.T.: 8.066 min
 Delta R.T.: -0.014 min
 Response: 1756913
 Conc: 484.15 ng/ml



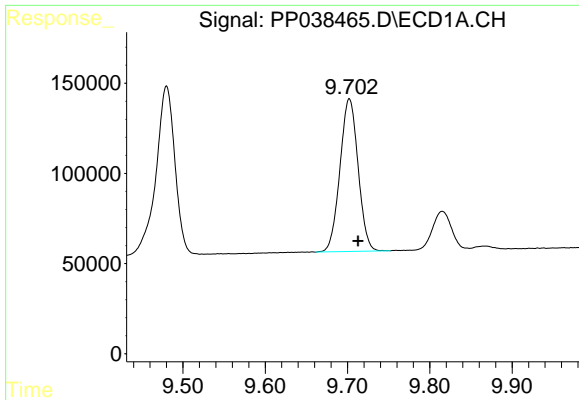
#42 AR-1268-2

R.T.: 9.480 min
 Delta R.T.: -0.010 min
 Response: 1495032
 Conc: 488.76 ng/ml



#42 AR-1268-2

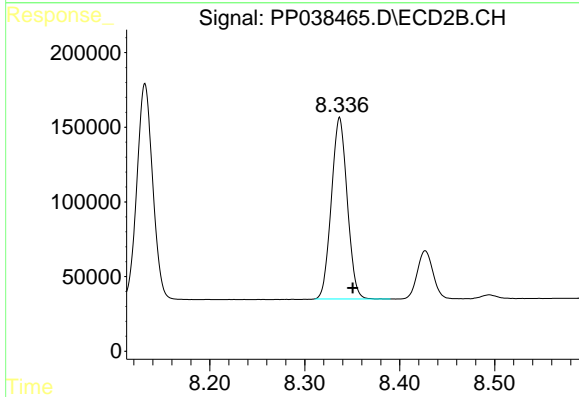
R.T.: 8.132 min
 Delta R.T.: -0.013 min
 Response: 1667144
 Conc: 487.98 ng/ml



#43 AR-1268-3

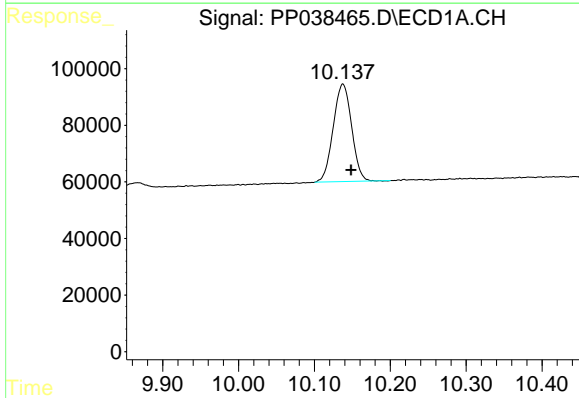
R.T.: 9.702 min
 Delta R.T.: -0.010 min
 Response: 1297910
 Conc: 511.64 ng/ml

Instrument :
 ECD_P
 ClientSampleId :
 AR1268CCC500



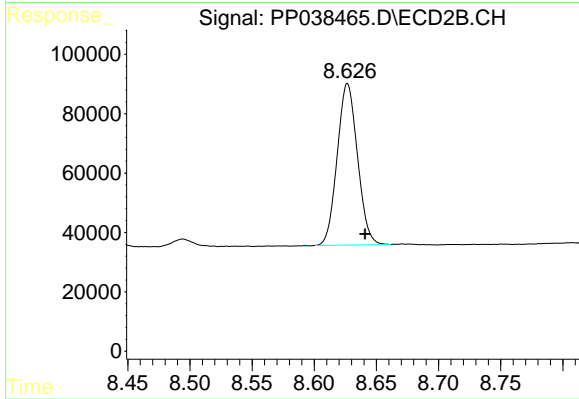
#43 AR-1268-3

R.T.: 8.337 min
 Delta R.T.: -0.014 min
 Response: 1410316
 Conc: 494.97 ng/ml



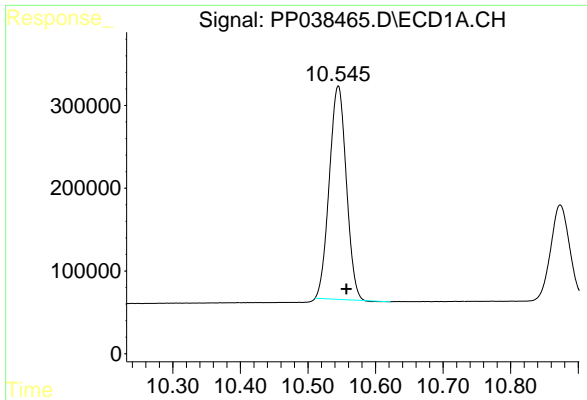
#44 AR-1268-4

R.T.: 10.138 min
 Delta R.T.: -0.011 min
 Response: 579684
 Conc: 525.32 ng/ml



#44 AR-1268-4

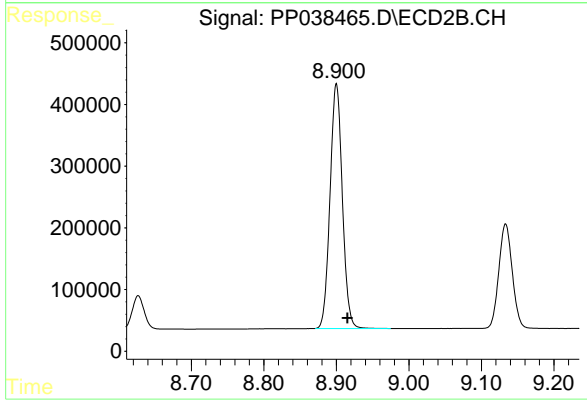
R.T.: 8.627 min
 Delta R.T.: -0.014 min
 Response: 618266
 Conc: 488.52 ng/ml



#45 AR-1268-5

R.T.: 10.545 min
Delta R.T.: -0.012 min
Response: 4504481
Conc: 536.71 ng/ml

Instrument :
ECD_P
ClientSampleId :
AR1268CCC500



#45 AR-1268-5

R.T.: 8.900 min
Delta R.T.: -0.015 min
Response: 4682807
Conc: 493.42 ng/ml