

Data Path : Z:\pestpcbsrv\HPCHEM1\ECD_P\Data\PP081721\
 Data File : PP038493.D
 Signal(s) : Signal #1: ECD1A.CH Signal #2: ECD2B.CH
 Acq On : 17 Aug 2021 17:33
 Operator : AJ\MA
 Sample : AR1242ICC050
 Misc :
 ALS Vial : 14 Sample Multiplier: 1

Instrument :
 ECD_P
 ClientSampleId :
 AR1242ICC050

Integration File signal 1: autoint1.e
 Integration File signal 2: autoint2.e
 Quant Time: Aug 18 02:34:36 2021
 Quant Method : Z:\pestpcbsrv\HPCHEM1\ECD_P\methods\PP081721.M
 Quant Title : GC EXTRACTABLES
 QLast Update : Wed Aug 18 02:34:23 2021
 Response via : Initial Calibration
 Integrator: ChemStation 6890 Scale Mode: Small noise peaks clipped

Volume Inj. : 2 µl
 Signal #1 Phase : ZB-MR1 Signal #2 Phase: ZB-MR2
 Signal #1 Info : 30Mx0.32mmx 0.50µ Signal #2 Info : 30M x 0.32mm x 0.25µm

Compound	RT#1	RT#2	Resp#1	Resp#2	ng/ml	ng/ml

System Monitoring Compounds						
1) SA Tetrachlo...	4.885	3.872	233553	131777	5.475	5.133
2) SA Decachlor...	10.873	9.131	142640	148158	5.508	5.698
Target Compounds						
16) L4 AR-1242-1	6.204	5.116	53975	38463	54.188	55.709
17) L4 AR-1242-2	6.227	5.136	79878	52396	55.587	53.676
18) L4 AR-1242-3	6.293	5.324	48801	28967	54.511	55.085
19) L4 AR-1242-4	6.400	5.422	39051	23503	53.330	49.170
20) L4 AR-1242-5	7.184	5.983	43219	33762	60.449	54.539

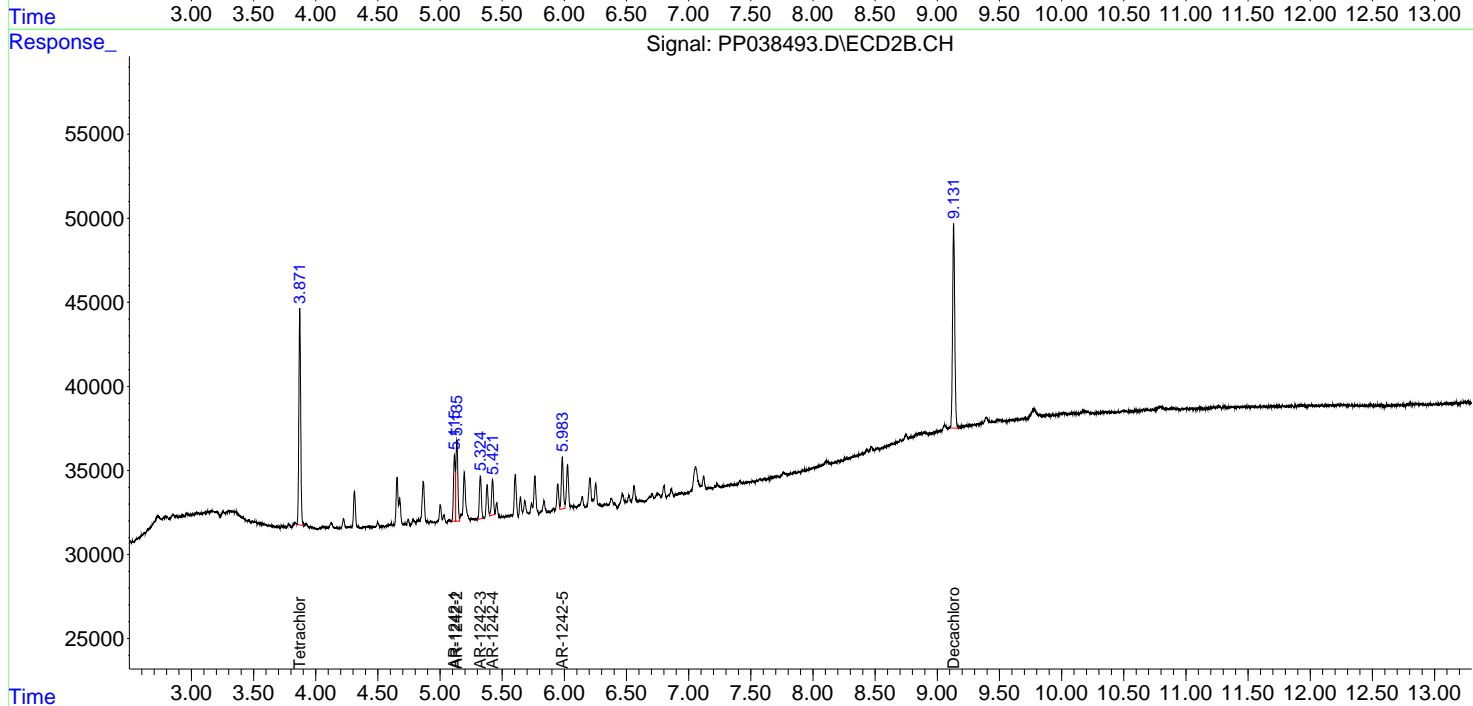
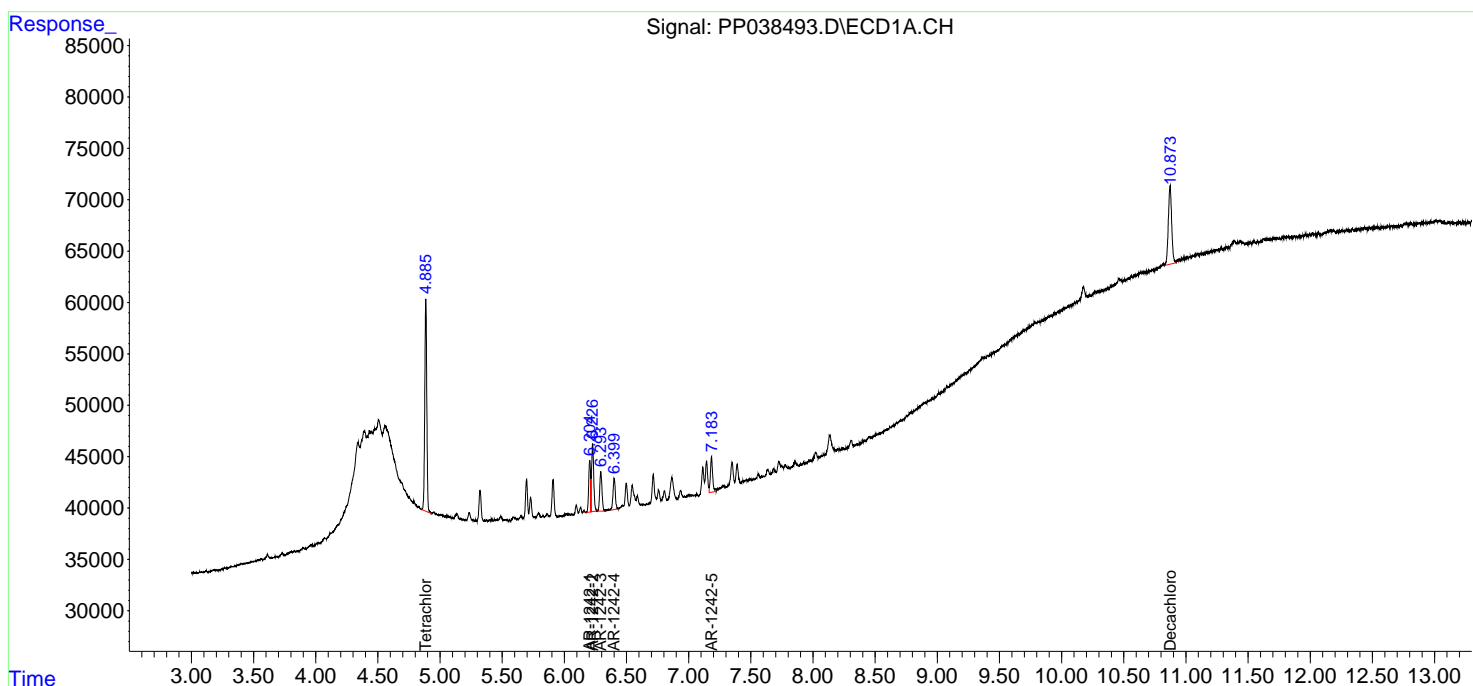
(f)=RT Delta > 1/2 Window (#)=Amounts differ by > 25% (m)=manual int.

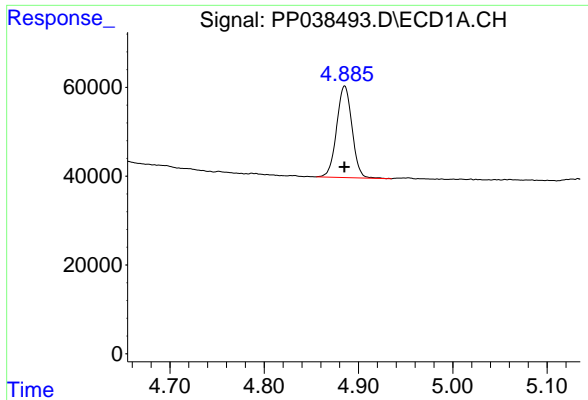
Data Path : Z:\pestpcbsrv\HPCHEM1\ECD_P\Data\PP081721\
 Data File : PP038493.D
 Signal(s) : Signal #1: ECD1A.CH Signal #2: ECD2B.CH
 Acq On : 17 Aug 2021 17:33
 Operator : AJ\MA
 Sample : AR1242ICC050
 Misc :
 ALS Vial : 14 Sample Multiplier: 1

Instrument :
 ECD_P
 ClientSampleId :
 AR1242ICC050

Integration File signal 1: autoint1.e
 Integration File signal 2: autoint2.e
 Quant Time: Aug 18 02:34:36 2021
 Quant Method : Z:\pestpcbsrv\HPCHEM1\ECD_P\methods\PP081721.M
 Quant Title : GC EXTRACTABLES
 QLast Update : Wed Aug 18 02:34:23 2021
 Response via : Initial Calibration
 Integrator: ChemStation 6890 Scale Mode: Small noise peaks clipped

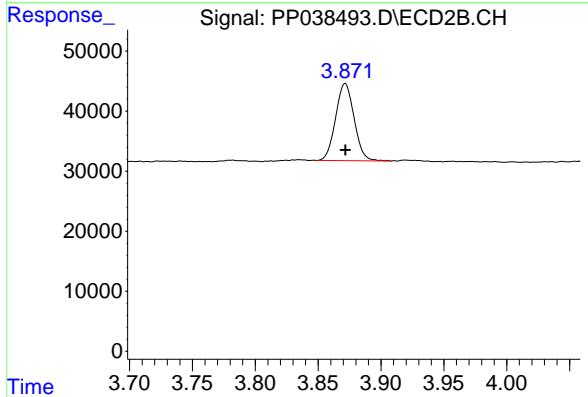
Volume Inj. : 2 µl
 Signal #1 Phase : ZB-MR1 Signal #2 Phase: ZB-MR2
 Signal #1 Info : 30Mx0.32mmx 0.50µ Signal #2 Info : 30M x 0.32mm x 0.25µm



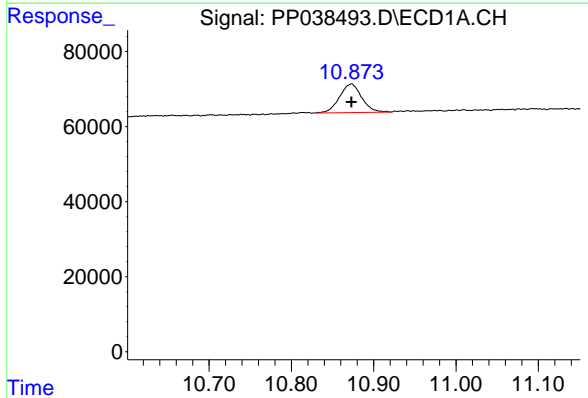


#1 Tetrachloro-m-xylene
 R.T.: 4.885 min
 Delta R.T.: 0.000 min
 Response: 233553
 Conc: 5.48 ng/ml

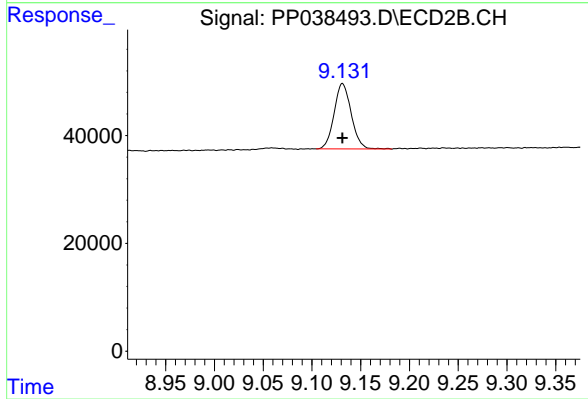
Instrument :
 ECD_P
 ClientSampleId :
 AR1242ICC050



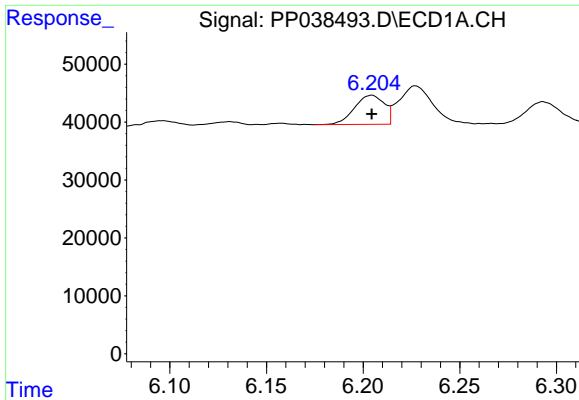
#1 Tetrachloro-m-xylene
 R.T.: 3.872 min
 Delta R.T.: 0.000 min
 Response: 131777
 Conc: 5.13 ng/ml



#2 Decachlorobiphenyl
 R.T.: 10.873 min
 Delta R.T.: 0.000 min
 Response: 142640
 Conc: 5.51 ng/ml



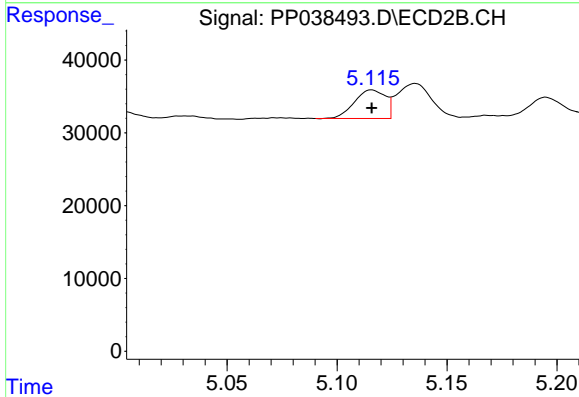
#2 Decachlorobiphenyl
 R.T.: 9.131 min
 Delta R.T.: 0.000 min
 Response: 148158
 Conc: 5.70 ng/ml



#16 AR-1242-1

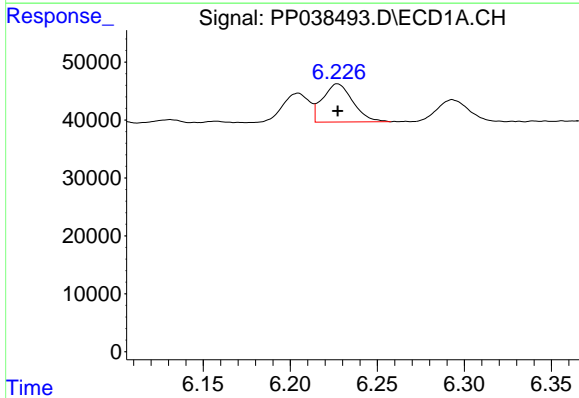
R.T.: 6.204 min
 Delta R.T.: 0.000 min
 Response: 53975
 Conc: 54.19 ng/ml

Instrument :
 ECD_P
ClientSampleId :
 AR1242ICC050



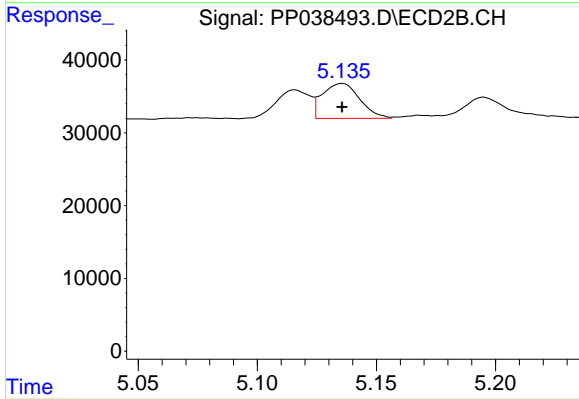
#16 AR-1242-1

R.T.: 5.116 min
 Delta R.T.: 0.000 min
 Response: 38463
 Conc: 55.71 ng/ml



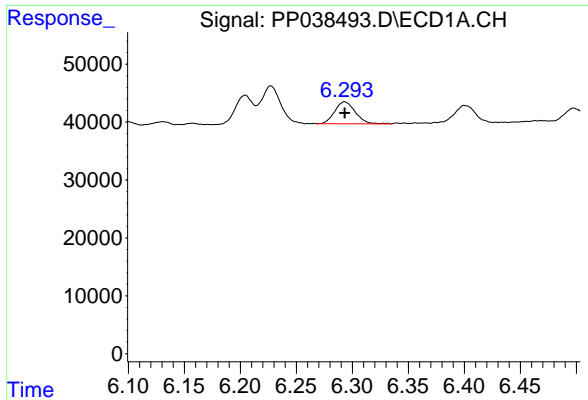
#17 AR-1242-2

R.T.: 6.227 min
 Delta R.T.: 0.000 min
 Response: 79878
 Conc: 55.59 ng/ml



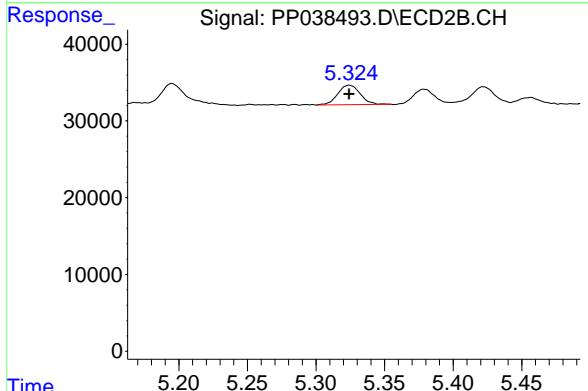
#17 AR-1242-2

R.T.: 5.136 min
 Delta R.T.: 0.000 min
 Response: 52396
 Conc: 53.68 ng/ml

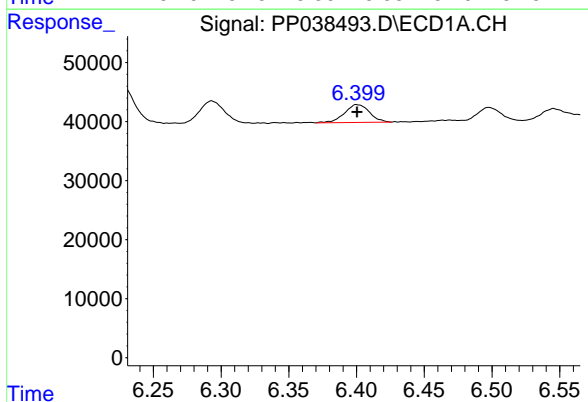


#18 AR-1242-3
 R.T.: 6.293 min
 Delta R.T.: 0.000 min
 Response: 48801
 Conc: 54.51 ng/ml

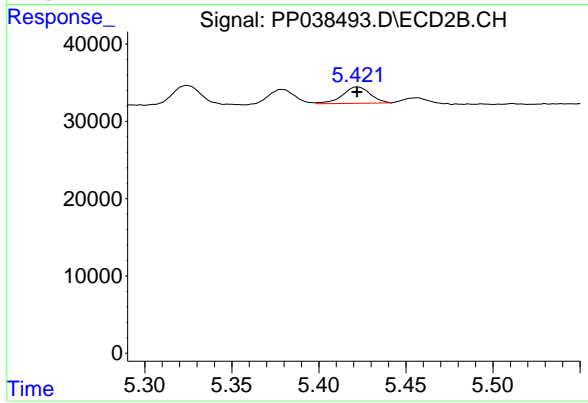
Instrument :
 ECD_P
 ClientSampleId :
 AR1242ICC050



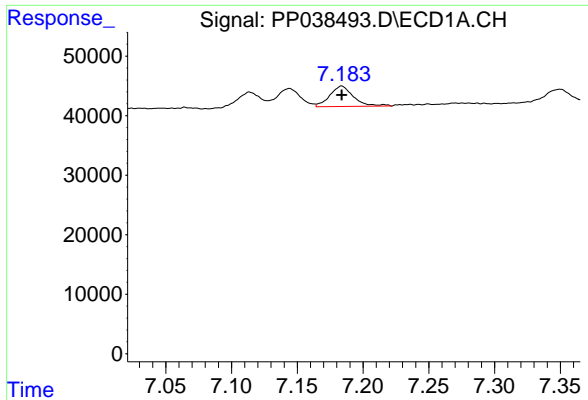
#18 AR-1242-3
 R.T.: 5.324 min
 Delta R.T.: 0.000 min
 Response: 28967
 Conc: 55.09 ng/ml



#19 AR-1242-4
 R.T.: 6.400 min
 Delta R.T.: 0.000 min
 Response: 39051
 Conc: 53.33 ng/ml



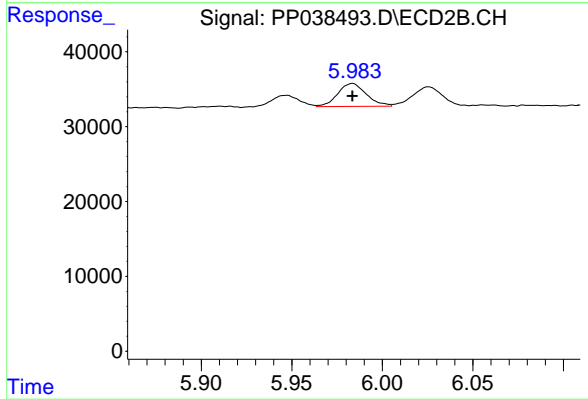
#19 AR-1242-4
 R.T.: 5.422 min
 Delta R.T.: 0.000 min
 Response: 23503
 Conc: 49.17 ng/ml



#20 AR-1242-5

R.T.: 7.184 min
Delta R.T.: 0.000 min
Response: 43219
Conc: 60.45 ng/ml

Instrument :
ECD_P
ClientSampleId :
AR1242ICC050



#20 AR-1242-5

R.T.: 5.983 min
Delta R.T.: 0.000 min
Response: 33762
Conc: 54.54 ng/ml