

Data Path : Z:\pestpcbsrv\HPCHEM1\ECD_P\Data\PP081721\
 Data File : PP038503.D
 Signal(s) : Signal #1: ECD1A.CH Signal #2: ECD2B.CH
 Acq On : 17 Aug 2021 20:23
 Operator : AJ\MA
 Sample : AR1254ICC050
 Misc :
 ALS Vial : 24 Sample Multiplier: 1

Instrument :
 ECD_P
 ClientSampleId :
 AR1254ICC050

Integration File signal 1: autoint1.e
 Integration File signal 2: autoint2.e
 Quant Time: Aug 18 03:55:46 2021
 Quant Method : Z:\pestpcbsrv\HPCHEM1\ECD_P\methods\PP081721.M
 Quant Title : GC EXTRACTABLES
 QLast Update : Wed Aug 18 03:46:20 2021
 Response via : Initial Calibration
 Integrator: ChemStation 6890 Scale Mode: Small noise peaks clipped

Volume Inj. : 2 µl
 Signal #1 Phase : ZB-MR1 Signal #2 Phase: ZB-MR2
 Signal #1 Info : 30Mx0.32mmx 0.50µ Signal #2 Info : 30M x 0.32mm x 0.25µm

Compound	RT#1	RT#2	Resp#1	Resp#2	ng/ml	ng/ml

System Monitoring Compounds						
1) SA Tetrachlo...	4.886	3.872	234412	135960	5.485	5.198
2) SA Decachlor...	10.872	9.132	142014	149010	5.408	5.658
Target Compounds						
26) L6 AR-1254-1	7.113	5.983	63394	72117	55.559	54.913
27) L6 AR-1254-2	7.343	6.144	103243	64918	59.787	56.559
28) L6 AR-1254-3	7.725	6.560	104265	100561	58.082	54.043
29) L6 AR-1254-4	8.022	6.801	75307	59422	58.364	50.847
30) L6 AR-1254-5	8.450	7.228	62655	86756	50.658	53.675

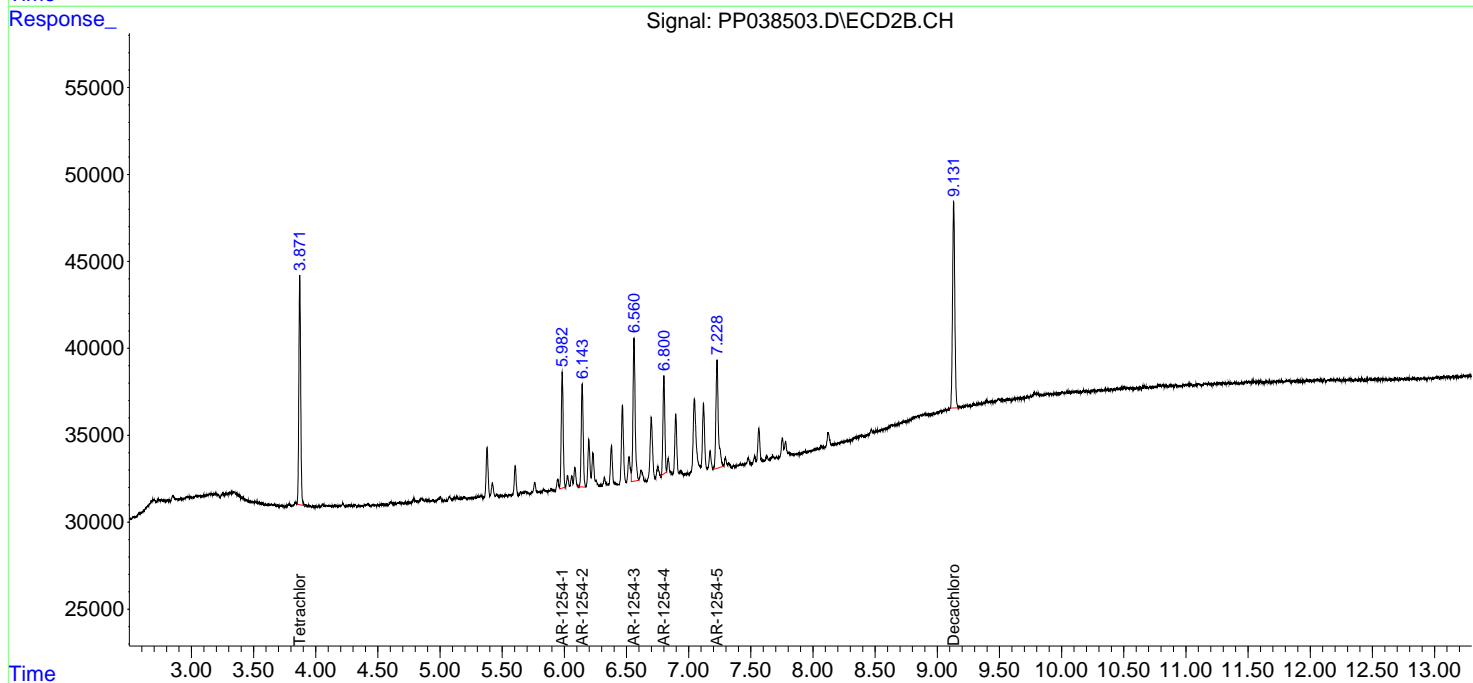
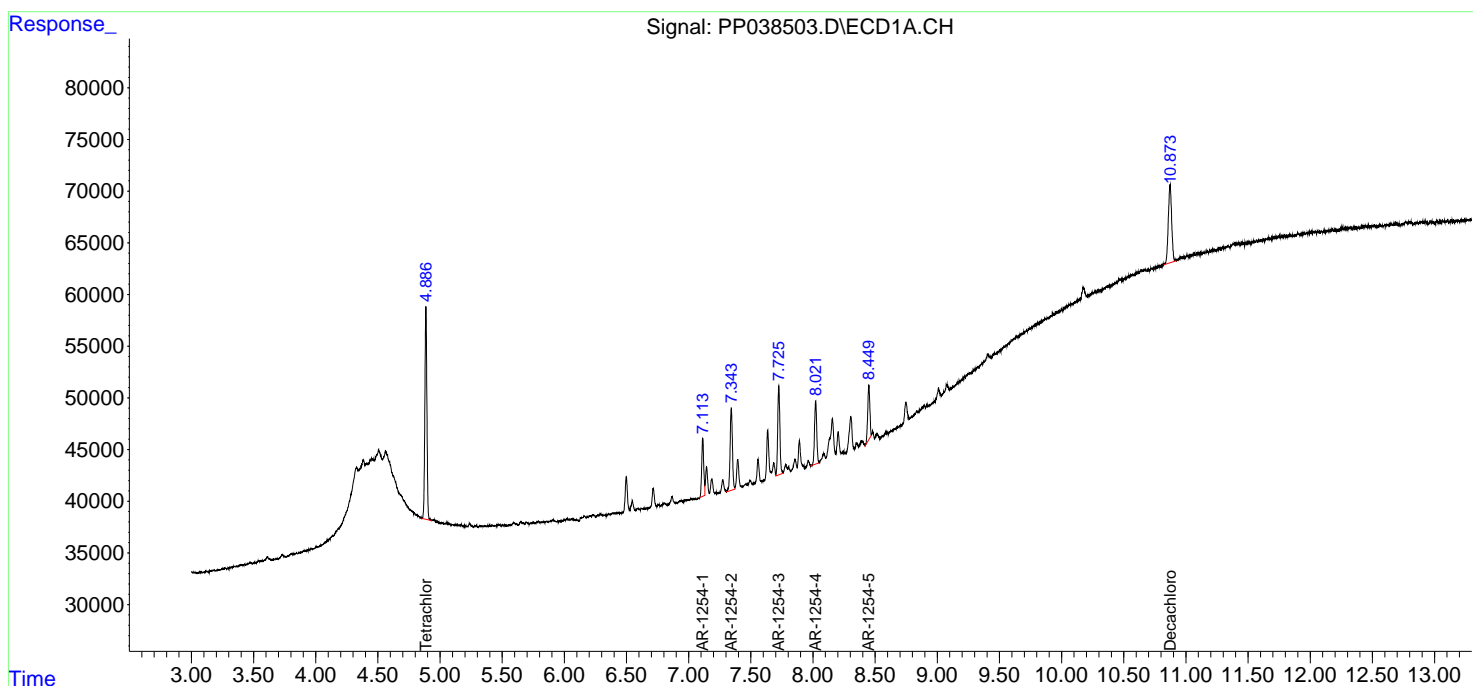
(f)=RT Delta > 1/2 Window (#)=Amounts differ by > 25% (m)=manual int.

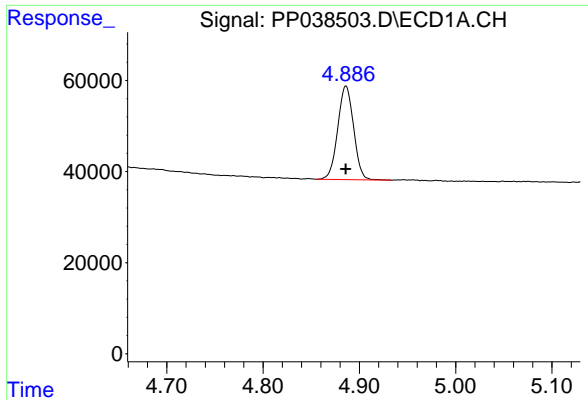
Data Path : Z:\pestpcbsrv\HPCHEM1\ECD_P\Data\PP081721\
 Data File : PP038503.D
 Signal(s) : Signal #1: ECD1A.CH Signal #2: ECD2B.CH
 Acq On : 17 Aug 2021 20:23
 Operator : AJ\MA
 Sample : AR1254ICC050
 Misc :
 ALS Vial : 24 Sample Multiplier: 1

Instrument :
 ECD_P
 ClientSampled :
 AR1254ICC050

Integration File signal 1: autoint1.e
 Integration File signal 2: autoint2.e
 Quant Time: Aug 18 03:55:46 2021
 Quant Method : Z:\pestpcbsrv\HPCHEM1\ECD_P\methods\PP081721.M
 Quant Title : GC EXTRACTABLES
 QLast Update : Wed Aug 18 03:46:20 2021
 Response via : Initial Calibration
 Integrator: ChemStation 6890 Scale Mode: Small noise peaks clipped

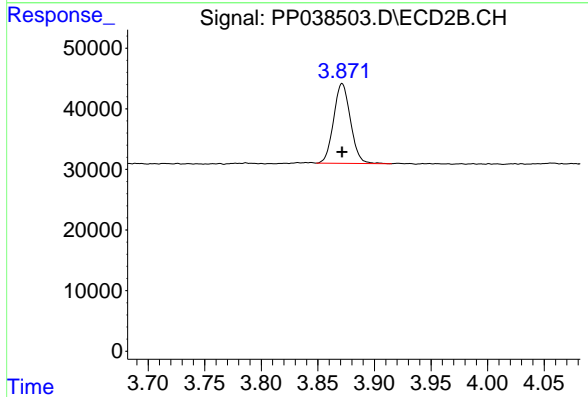
Volume Inj. : 2 µl
 Signal #1 Phase : ZB-MR1 Signal #2 Phase: ZB-MR2
 Signal #1 Info : 30Mx0.32mmx 0.50µ Signal #2 Info : 30M x 0.32mm x 0.25µm



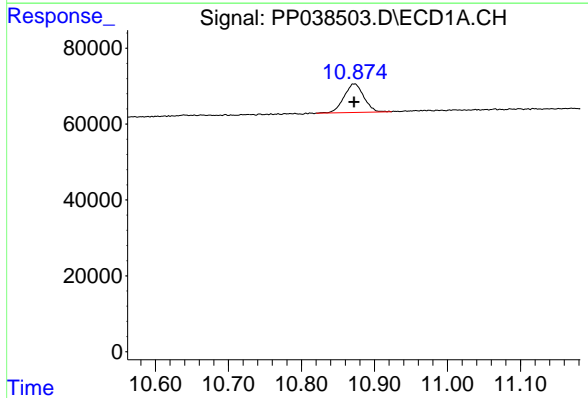


#1 Tetrachloro-m-xylene
 R.T.: 4.886 min
 Delta R.T.: 0.000 min
 Response: 234412
 Conc: 5.49 ng/ml

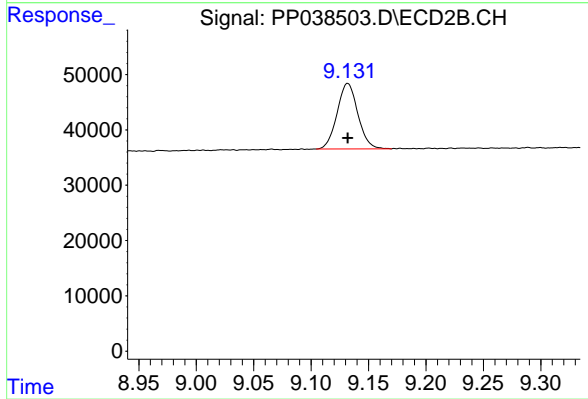
Instrument :
 ECD_P
 ClientSampleId :
 AR1254ICC050



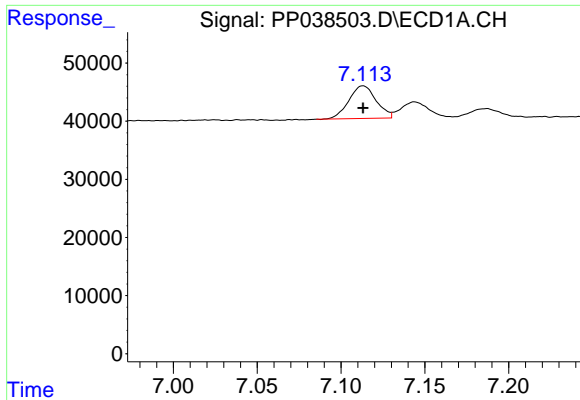
#1 Tetrachloro-m-xylene
 R.T.: 3.872 min
 Delta R.T.: 0.000 min
 Response: 135960
 Conc: 5.20 ng/ml



#2 Decachlorobiphenyl
 R.T.: 10.872 min
 Delta R.T.: 0.000 min
 Response: 142014
 Conc: 5.41 ng/ml



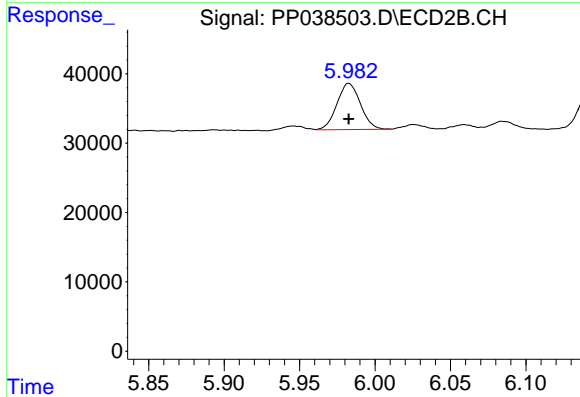
#2 Decachlorobiphenyl
 R.T.: 9.132 min
 Delta R.T.: 0.000 min
 Response: 149010
 Conc: 5.66 ng/ml



#26 AR-1254-1

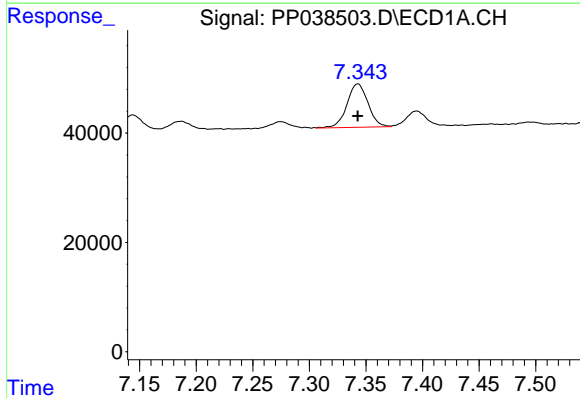
R.T.: 7.113 min
 Delta R.T.: 0.000 min
 Response: 63394
 Conc: 55.56 ng/ml

Instrument :
 ECD_P
 ClientSampleId :
 AR1254ICC050



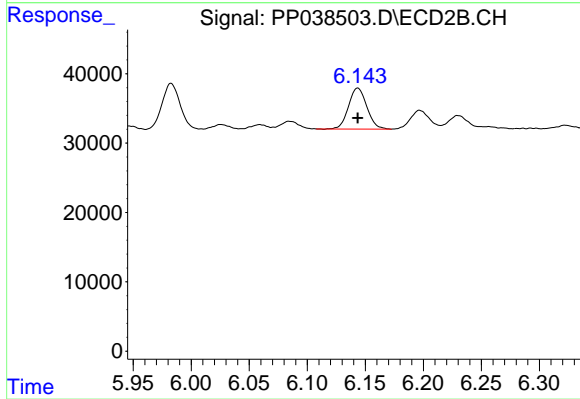
#26 AR-1254-1

R.T.: 5.983 min
 Delta R.T.: 0.000 min
 Response: 72117
 Conc: 54.91 ng/ml



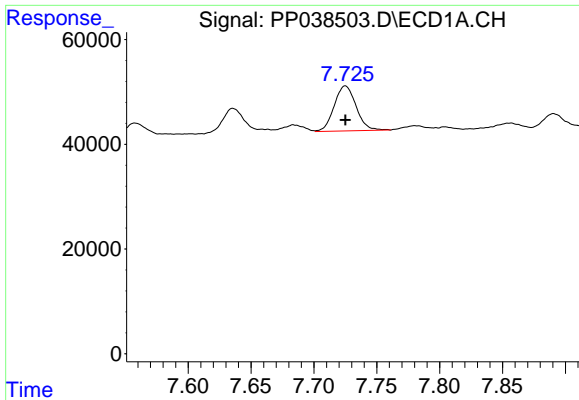
#27 AR-1254-2

R.T.: 7.343 min
 Delta R.T.: 0.000 min
 Response: 103243
 Conc: 59.79 ng/ml



#27 AR-1254-2

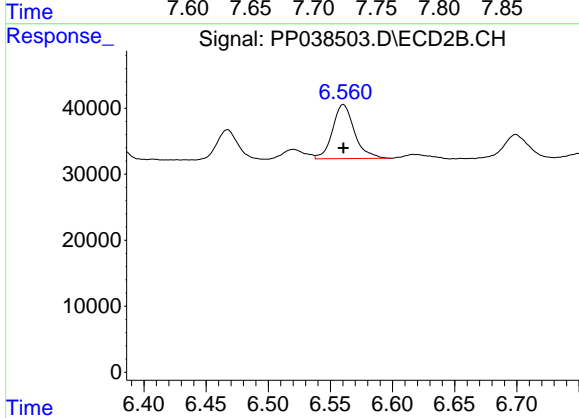
R.T.: 6.144 min
 Delta R.T.: 0.000 min
 Response: 64918
 Conc: 56.56 ng/ml



#28 AR-1254-3

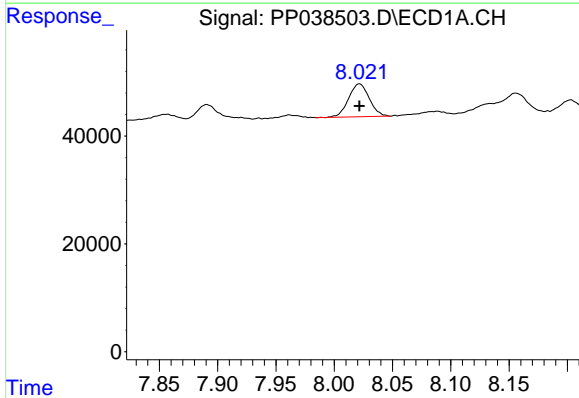
R.T.: 7.725 min
 Delta R.T.: 0.000 min
 Response: 104265
 Conc: 58.08 ng/ml

Instrument :
 ECD_P
ClientSampleId :
 AR1254ICC050



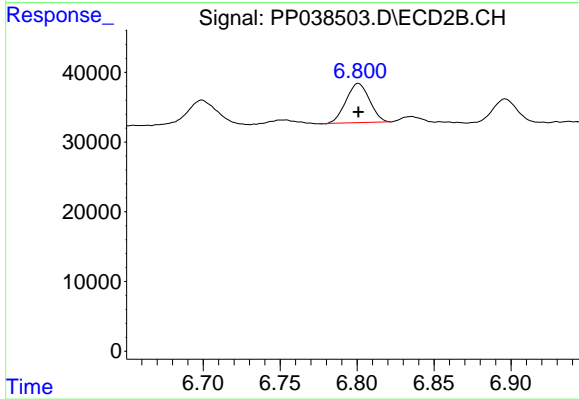
#28 AR-1254-3

R.T.: 6.560 min
 Delta R.T.: 0.000 min
 Response: 100561
 Conc: 54.04 ng/ml



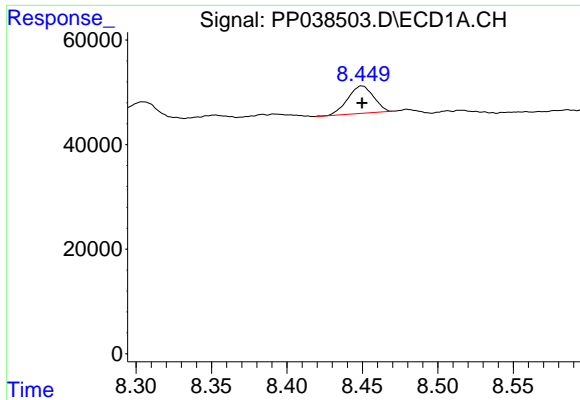
#29 AR-1254-4

R.T.: 8.022 min
 Delta R.T.: 0.000 min
 Response: 75307
 Conc: 58.36 ng/ml



#29 AR-1254-4

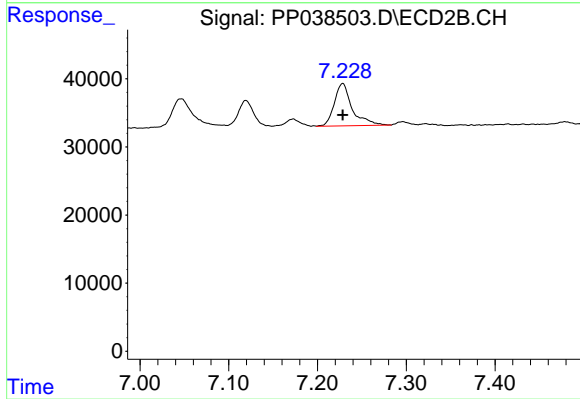
R.T.: 6.801 min
 Delta R.T.: 0.000 min
 Response: 59422
 Conc: 50.85 ng/ml



#30 AR-1254-5

R.T.: 8.450 min
Delta R.T.: 0.000 min
Response: 62655
Conc: 50.66 ng/ml

Instrument :
ECD_P
ClientSampleId :
AR1254ICC050



#30 AR-1254-5

R.T.: 7.228 min
Delta R.T.: 0.000 min
Response: 86756
Conc: 53.68 ng/ml