

Data Path : Z:\pestpcbsrv\HPCHEM1\ECD_P\Data\PP081722\
 Data File : PP050646.D
 Signal(s) : Signal #1: ECD1A.ch Signal #2: ECD2B.ch
 Acq On : 17 Aug 2022 14:43
 Operator : YP\AJ
 Sample : N4214-03
 Misc :
 ALS Vial : 10 Sample Multiplier: 1

Instrument :
 ECD_P
 ClientSampleId :
 ETGI-357

Integration File signal 1: autoint1.e
 Integration File signal 2: autoint2.e
 Quant Time: Aug 18 03:38:54 2022
 Quant Method : Z:\pestpcbsrv\HPCHEM1\ECD_P\methods\PP080622.M
 Quant Title : GC EXTRACTABLES
 QLast Update : Tue Aug 09 11:38:04 2022
 Response via : Initial Calibration
 Integrator: ChemStation

Volume Inj. : 2 µl
 Signal #1 Phase : ZB-MR1 Signal #2 Phase: ZB-MR2
 Signal #1 Info : 30Mx0.32mmx 0.50µ Signal #2 Info : 30M x 0.32mm x 0.25µm

Compound	RT#1	RT#2	Resp#1	Resp#2	ng/ml	ng/ml

System Monitoring Compounds						
1) SA Tetrachlo...	4.343	3.589	33278776	66734508	20.674	21.306
2) SA Decachlor...	10.093	8.552	33906116	31698541	19.255	20.596

Target Compounds

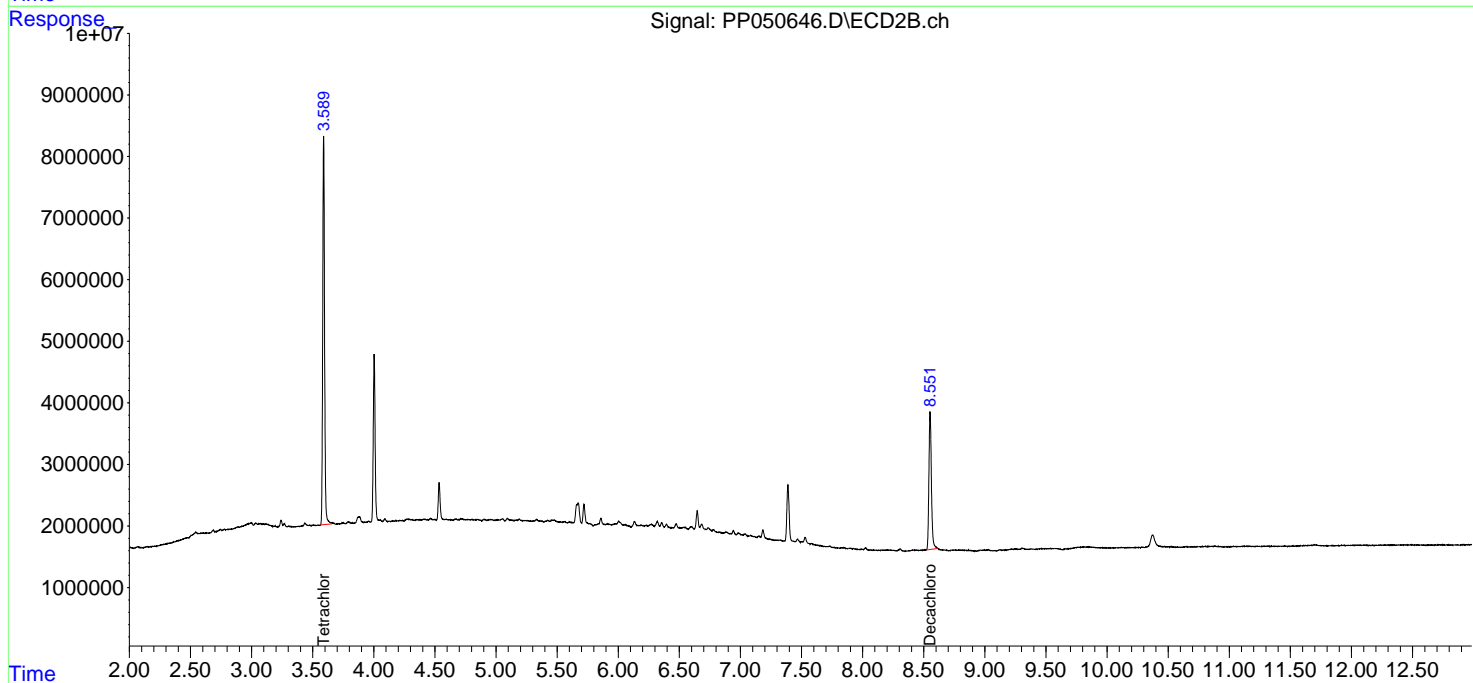
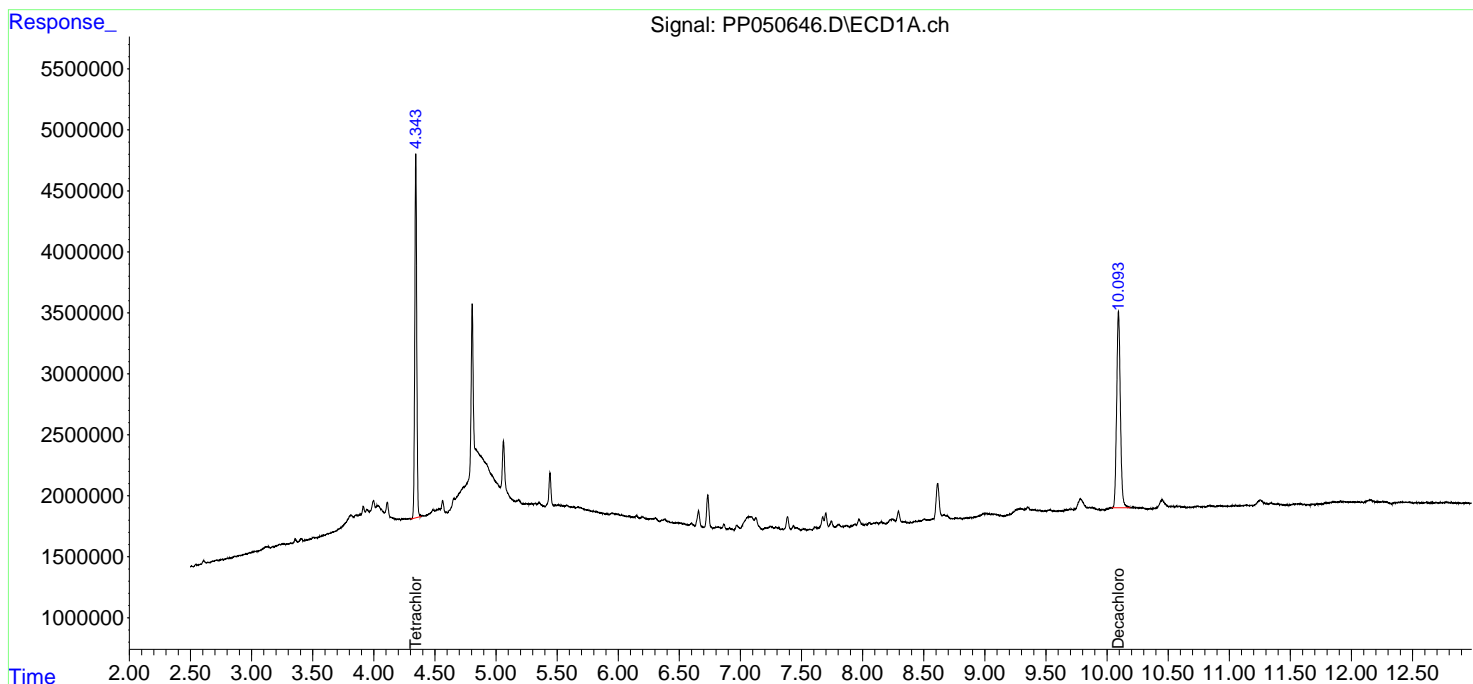
(f)=RT Delta > 1/2 Window (#)=Amounts differ by > 25% (m)=manual int.

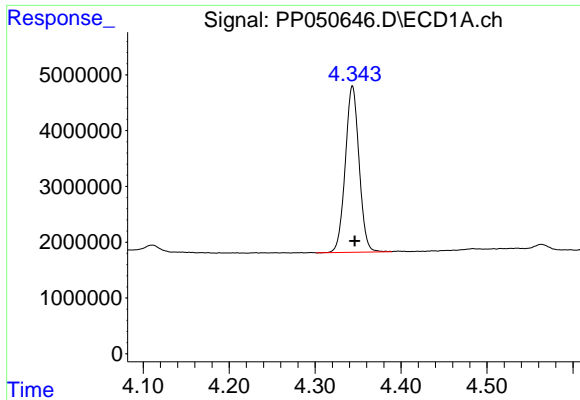
Data Path : Z:\pestpcbsrv\HPCHEM1\ECD_P\Data\PP081722\
 Data File : PP050646.D
 Signal(s) : Signal #1: ECD1A.ch Signal #2: ECD2B.ch
 Acq On : 17 Aug 2022 14:43
 Operator : YP\AJ
 Sample : N4214-03
 Misc :
 ALS Vial : 10 Sample Multiplier: 1

Instrument :
 ECD_P
 ClientSampleId :
 ETGI-357

Integration File signal 1: autoint1.e
 Integration File signal 2: autoint2.e
 Quant Time: Aug 18 03:38:54 2022
 Quant Method : Z:\pestpcbsrv\HPCHEM1\ECD_P\methods\PP080622.M
 Quant Title : GC EXTRACTABLES
 QLast Update : Tue Aug 09 11:38:04 2022
 Response via : Initial Calibration
 Integrator: ChemStation

Volume Inj. : 2 µl
 Signal #1 Phase : ZB-MR1 Signal #2 Phase: ZB-MR2
 Signal #1 Info : 30Mx0.32mmx 0.50µ Signal #2 Info : 30M x 0.32mm x 0.25µm

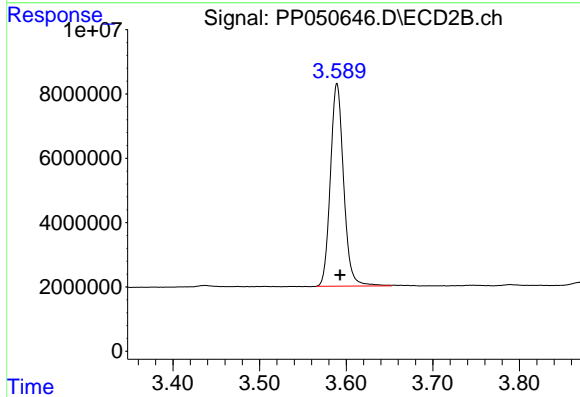




#1 Tetrachloro-m-xylene

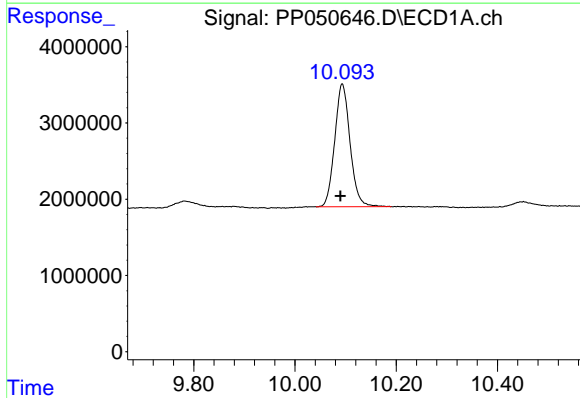
R.T.: 4.343 min
 Delta R.T.: -0.003 min
 Response: 33278776
 Conc: 20.67 ng/ml

Instrument :
 ECD_P
 ClientSampleId :
 ETGI-357



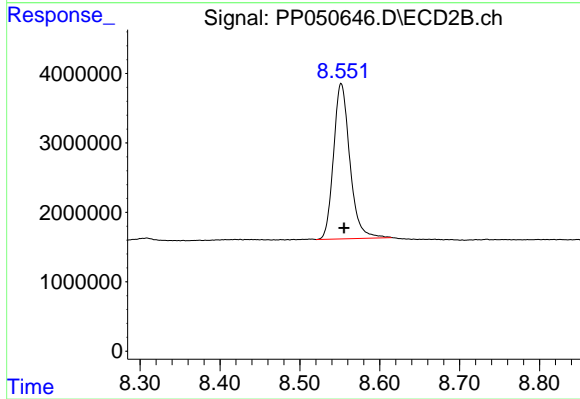
#1 Tetrachloro-m-xylene

R.T.: 3.589 min
 Delta R.T.: -0.003 min
 Response: 66734508
 Conc: 21.31 ng/ml



#2 Decachlorobiphenyl

R.T.: 10.093 min
 Delta R.T.: 0.004 min
 Response: 33906116
 Conc: 19.26 ng/ml



#2 Decachlorobiphenyl

R.T.: 8.552 min
 Delta R.T.: -0.004 min
 Response: 31698541
 Conc: 20.60 ng/ml