

Data Path : Z:\pestpcbsrv\HPCHEM1\ECD_P\Data\PP081825\
 Data File : PP074446.D
 Signal(s) : Signal #1: ECD1A.ch Signal #2: ECD2B.ch
 Acq On : 18 Aug 2025 12:04
 Operator : YP\AJ
 Sample : PB169282BL
 Misc :
 ALS Vial : 9 Sample Multiplier: 1

Instrument :
 ECD_P
 ClientSampleId :
 PB169282BL

Integration File signal 1: autoint1.e
 Integration File signal 2: autoint2.e
 Quant Time: Aug 18 13:03:40 2025
 Quant Method : Z:\pestpcbsrv\HPCHEM1\ECD_P\methods\PP080125.M
 Quant Title : GC EXTRACTABLES
 QLast Update : Mon Aug 04 11:01:49 2025
 Response via : Initial Calibration
 Integrator: ChemStation

Volume Inj. : 2 µl
 Signal #1 Phase : ZB-MR1 Signal #2 Phase: ZB-MR2
 Signal #1 Info : 30Mx0.32mmx 0.50µ Signal #2 Info : 30M x 0.32mm x 0.25µm

Compound	RT#1	RT#2	Resp#1	Resp#2	ng/ml	ng/ml

System Monitoring Compounds						
1) SA Tetrachlo...	4.655	3.798	25637551	84310134	22.925	21.988
2) SA Decachlor...	10.435	8.813	21397040	121.1E6	22.032	20.142

Target Compounds

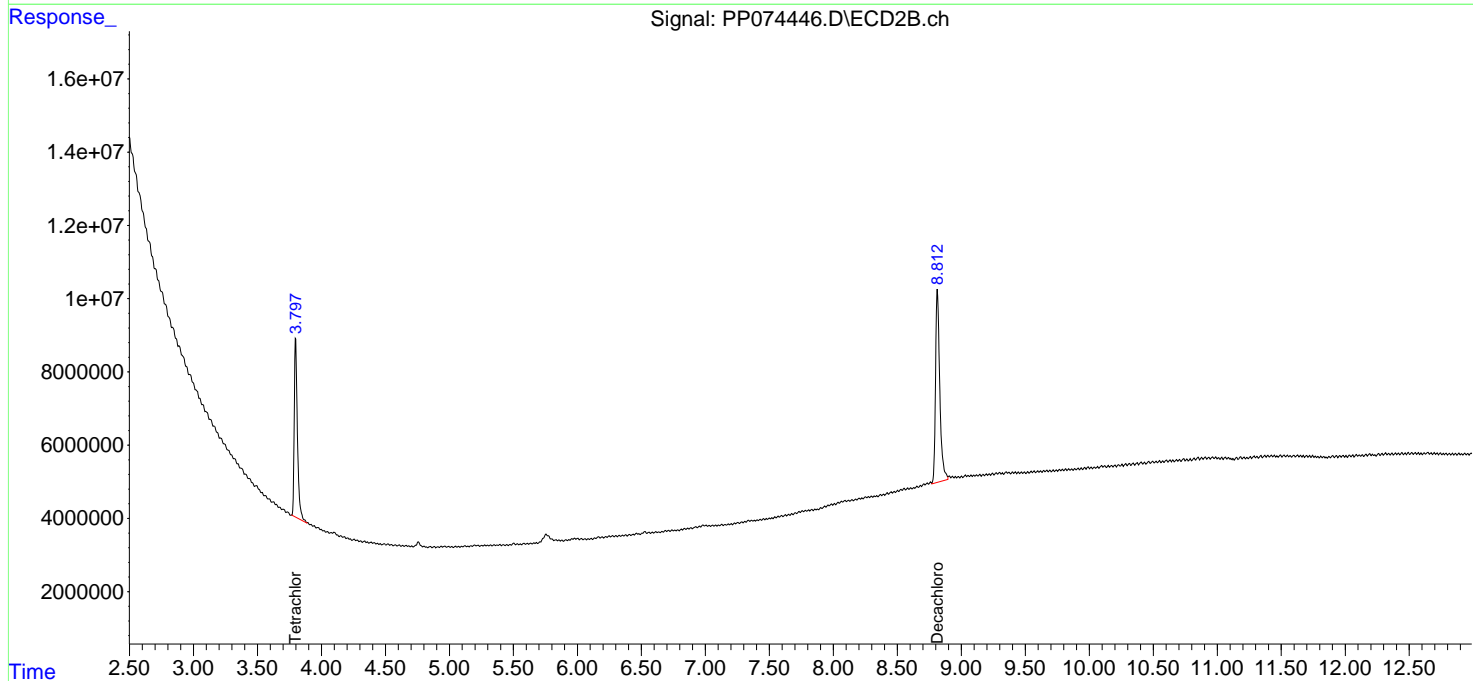
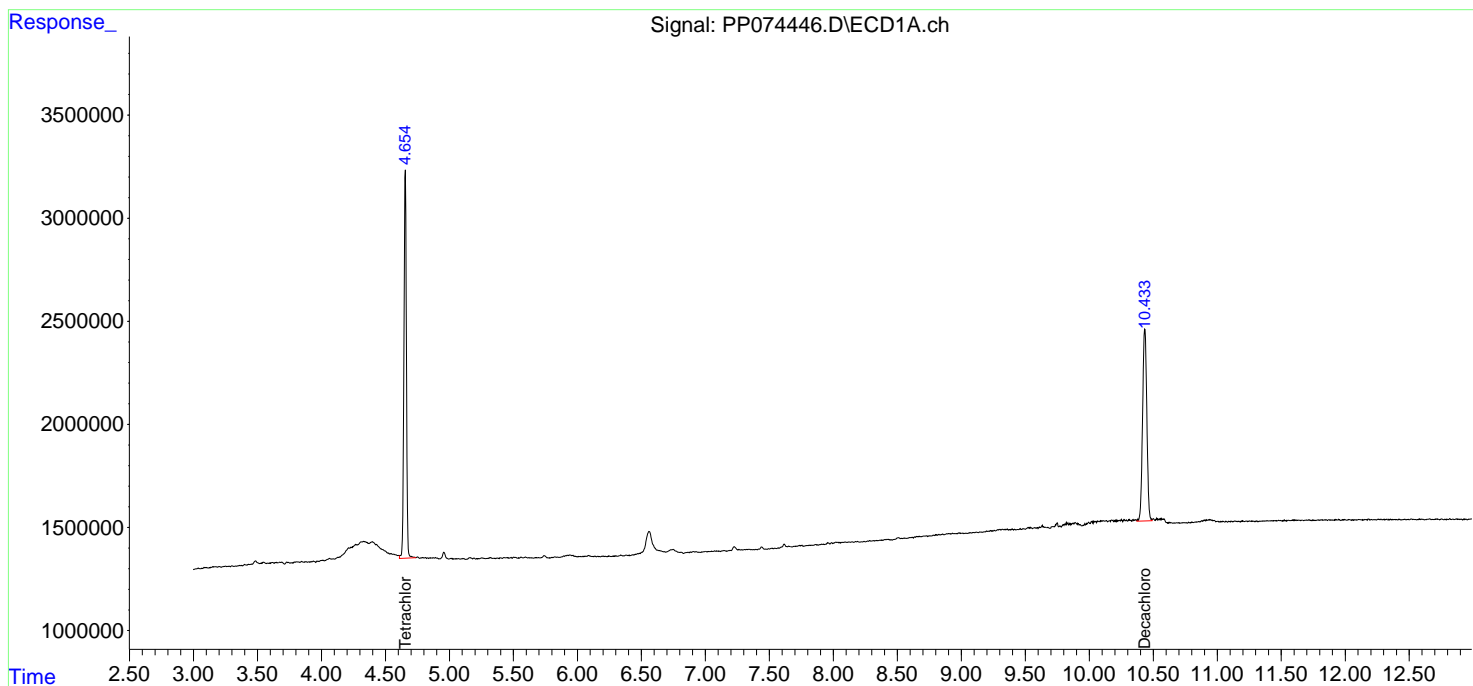
(f)=RT Delta > 1/2 Window (#)=Amounts differ by > 25% (m)=manual int.

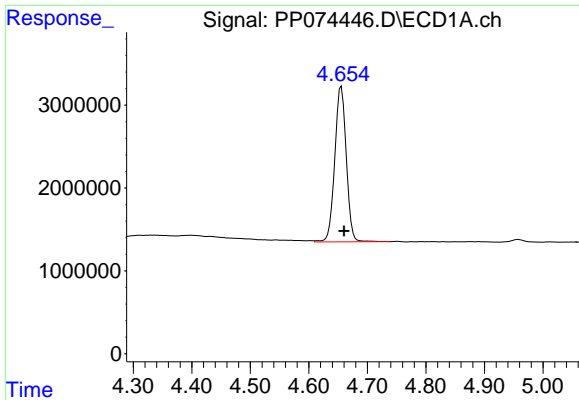
Data Path : Z:\pestpcbsrv\HPCHEM1\ECD_P\Data\PP081825\
 Data File : PP074446.D
 Signal(s) : Signal #1: ECD1A.ch Signal #2: ECD2B.ch
 Acq On : 18 Aug 2025 12:04
 Operator : YP\AJ
 Sample : PB169282BL
 Misc :
 ALS Vial : 9 Sample Multiplier: 1

Instrument :
 ECD_P
 ClientSampleId :
 PB169282BL

Integration File signal 1: autoint1.e
 Integration File signal 2: autoint2.e
 Quant Time: Aug 18 13:03:40 2025
 Quant Method : Z:\pestpcbsrv\HPCHEM1\ECD_P\methods\PP080125.M
 Quant Title : GC EXTRACTABLES
 QLast Update : Mon Aug 04 11:01:49 2025
 Response via : Initial Calibration
 Integrator: ChemStation

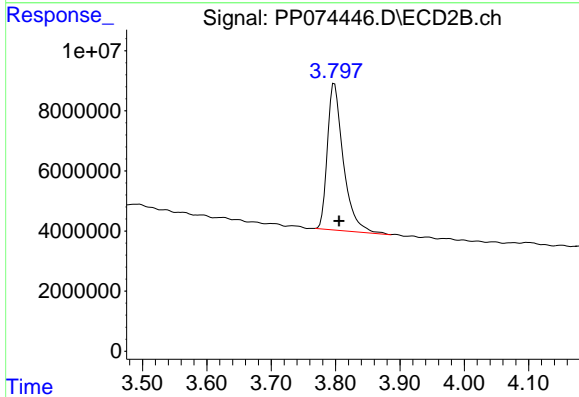
Volume Inj. : 2 µl
 Signal #1 Phase : ZB-MR1 Signal #2 Phase: ZB-MR2
 Signal #1 Info : 30Mx0.32mmx 0.50µ Signal #2 Info : 30M x 0.32mm x 0.25µm



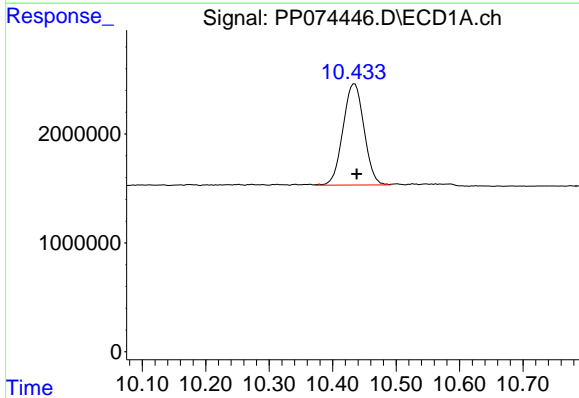


#1 Tetrachloro-m-xylene
 R.T.: 4.655 min
 Delta R.T.: -0.005 min
 Response: 25637551
 Conc: 22.93 ng/ml

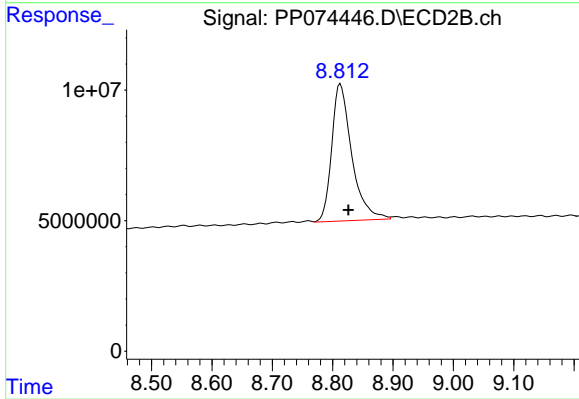
Instrument :
 ECD_P
 ClientSampleId :
 PB169282BL



#1 Tetrachloro-m-xylene
 R.T.: 3.798 min
 Delta R.T.: -0.007 min
 Response: 84310134
 Conc: 21.99 ng/ml



#2 Decachlorobiphenyl
 R.T.: 10.435 min
 Delta R.T.: -0.003 min
 Response: 21397040
 Conc: 22.03 ng/ml



#2 Decachlorobiphenyl
 R.T.: 8.813 min
 Delta R.T.: -0.013 min
 Response: 121124054
 Conc: 20.14 ng/ml