

Data Path : Z:\pestpcbsrv\HPCHEM1\ECD\_P\Data\PP081825\  
 Data File : PP074478.D  
 Signal(s) : Signal #1: ECD1A.ch Signal #2: ECD2B.ch  
 Acq On : 18 Aug 2025 23:10  
 Operator : YP\AJ  
 Sample : Q2890-01  
 Misc :  
 ALS Vial : 33 Sample Multiplier: 1

**Instrument :**  
 ECD\_P  
**ClientSampleId :**  
 60296

**Manual Integrations**  
**APPROVED**

Reviewed By :Yogesh Patel 08/19/2025  
 Supervised By :mohammad ahmed 08/20/2025

Integration File signal 1: autoint1.e  
 Integration File signal 2: autoint2.e  
 Quant Time: Aug 19 02:21:06 2025  
 Quant Method : Z:\pestpcbsrv\HPCHEM1\ECD\_P\methods\PP080125.M  
 Quant Title : GC EXTRACTABLES  
 QLast Update : Mon Aug 04 11:01:49 2025  
 Response via : Initial Calibration  
 Integrator: ChemStation

Volume Inj. : 2 µl  
 Signal #1 Phase : ZB-MR1 Signal #2 Phase: ZB-MR2  
 Signal #1 Info : 30Mx0.32mmx 0.50µ Signal #2 Info : 30M x 0.32mm x 0.25µm

Compound	RT#1	RT#2	Resp#1	Resp#2	ng/ml	ng/ml
-----						
System Monitoring Compounds						
1) SA Tetrachlo...	4.654	3.797	27770570	97793574	24.833	25.504m
2) SA Decachlor...	10.426	8.812	21023689	118.5E6	21.648	19.707

Target Compounds

-----  
 (f)=RT Delta > 1/2 Window (#)=Amounts differ by > 25% (m)=manual int.

Data Path : Z:\pestpcbsrv\HPCHEM1\ECD\_P\Data\PP081825\  
 Data File : PP074478.D  
 Signal(s) : Signal #1: ECD1A.ch Signal #2: ECD2B.ch  
 Acq On : 18 Aug 2025 23:10  
 Operator : YP\AJ  
 Sample : Q2890-01  
 Misc :  
 ALS Vial : 33 Sample Multiplier: 1

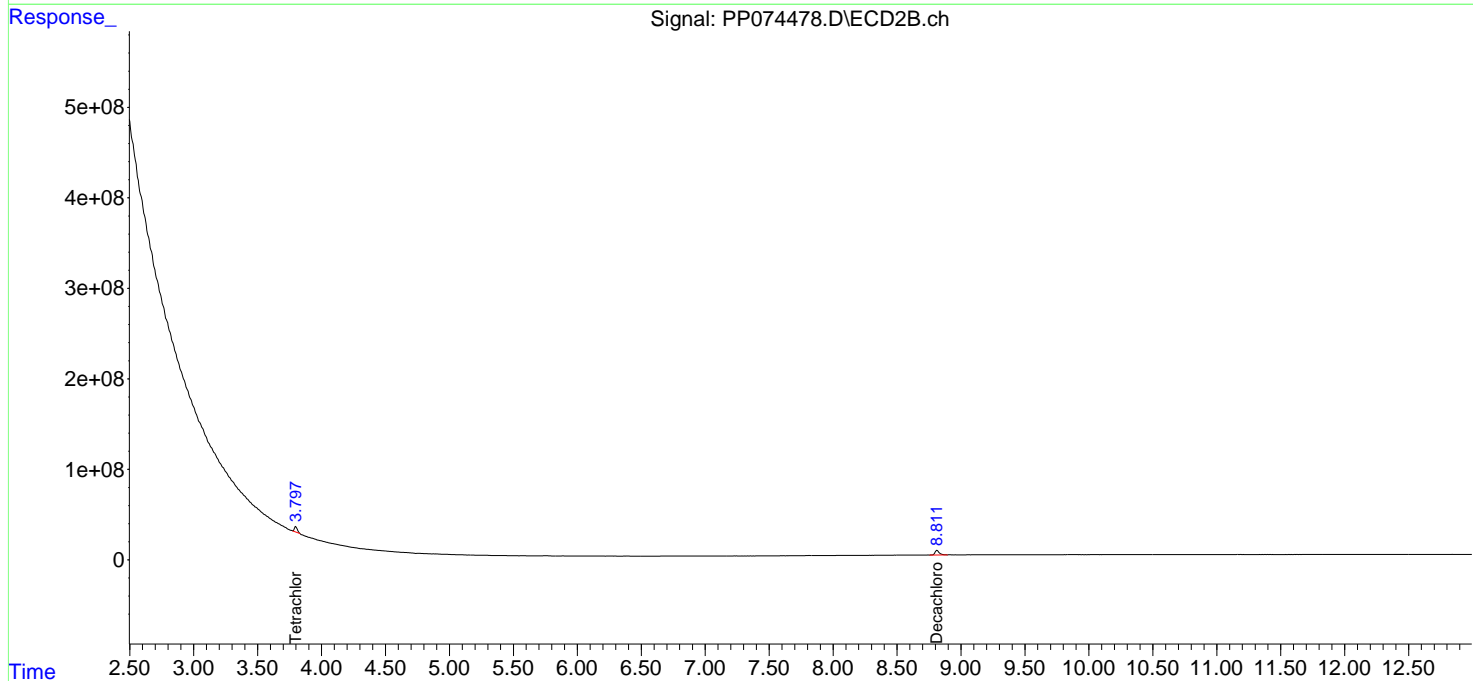
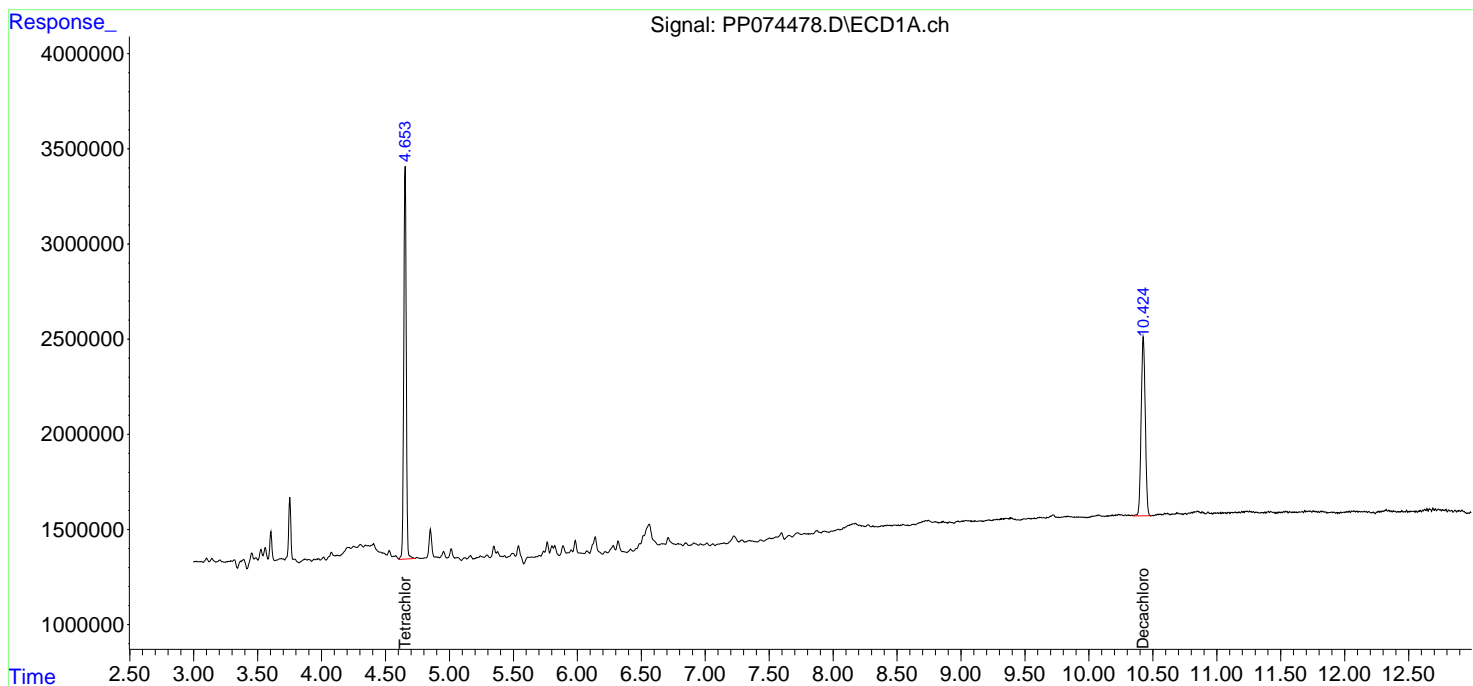
**Instrument :**  
 ECD\_P  
**ClientSampleId :**  
 60296

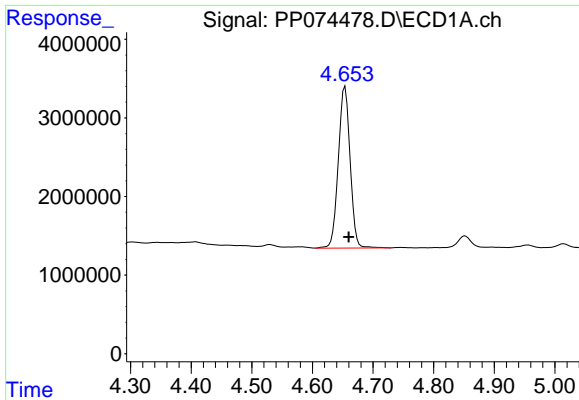
**Manual Integrations**  
**APPROVED**

Reviewed By :Yogesh Patel 08/19/2025  
 Supervised By :mohammad ahmed 08/20/2025

Integration File signal 1: autoint1.e  
 Integration File signal 2: autoint2.e  
 Quant Time: Aug 19 02:21:06 2025  
 Quant Method : Z:\pestpcbsrv\HPCHEM1\ECD\_P\methods\PP080125.M  
 Quant Title : GC EXTRACTABLES  
 QLast Update : Mon Aug 04 11:01:49 2025  
 Response via : Initial Calibration  
 Integrator: ChemStation

Volume Inj. : 2 µl  
 Signal #1 Phase : ZB-MR1 Signal #2 Phase: ZB-MR2  
 Signal #1 Info : 30Mx0.32mmx 0.50µ Signal #2 Info : 30M x 0.32mm x 0.25µm



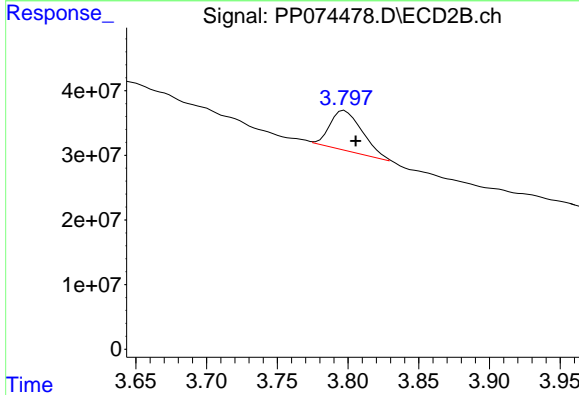


#1 Tetrachloro-m-xylene  
 R.T.: 4.654 min  
 Delta R.T.: -0.006 min  
 Response: 27770570  
 Conc: 24.83 ng/ml

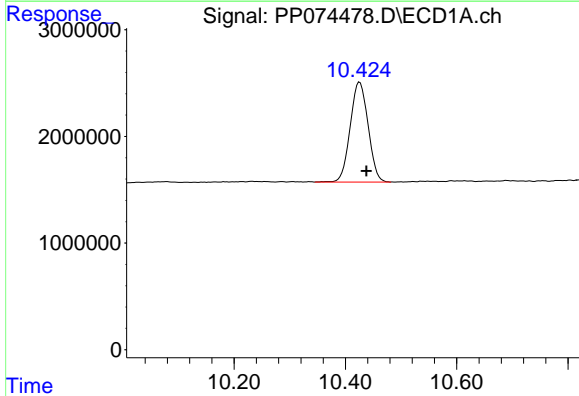
Instrument :  
 ECD\_P  
 ClientSampleId :  
 60296

Manual Integrations  
 APPROVED

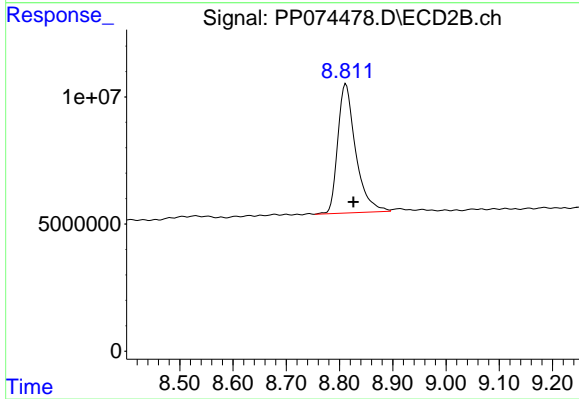
Reviewed By :Yogesh Patel 08/19/2025  
 Supervised By :mohammad ahmed 08/20/2025



#1 Tetrachloro-m-xylene  
 R.T.: 3.797 min  
 Delta R.T.: -0.009 min  
 Response: 97793574  
 Conc: 25.50 ng/ml m



#2 Decachlorobiphenyl  
 R.T.: 10.426 min  
 Delta R.T.: -0.012 min  
 Response: 21023689  
 Conc: 21.65 ng/ml



#2 Decachlorobiphenyl  
 R.T.: 8.812 min  
 Delta R.T.: -0.014 min  
 Response: 118509488  
 Conc: 19.71 ng/ml