

Data Path : Z:\pestpcbsrv\HPCHEM1\ECD_P\Data\PP081825\
 Data File : PP074483.D
 Signal(s) : Signal #1: ECD1A.ch Signal #2: ECD2B.ch
 Acq On : 19 Aug 2025 01:52
 Operator : YP\AJ
 Sample : AR1254CCC500
 Misc :
 ALS Vial : 5 Sample Multiplier: 1

Instrument :
 ECD_P
ClientSampleId :
 AR1254CCC500

Manual Integrations
APPROVED
 Reviewed By :Yogesh Patel 08/19/2025
 Supervised By :mohammad ahmed 08/20/2025

Integration File signal 1: autoint1.e
 Integration File signal 2: autoint2.e
 Quant Time: Aug 19 02:23:10 2025
 Quant Method : Z:\pestpcbsrv\HPCHEM1\ECD_P\methods\PP080125.M
 Quant Title : GC EXTRACTABLES
 QLast Update : Mon Aug 04 11:01:49 2025
 Response via : Initial Calibration
 Integrator: ChemStation

Volume Inj. : 2 µl
 Signal #1 Phase : ZB-MR1 Signal #2 Phase: ZB-MR2
 Signal #1 Info : 30Mx0.32mmx 0.50µ Signal #2 Info : 30M x 0.32mm x 0.25µm

Compound	RT#1	RT#2	Resp#1	Resp#2	ng/ml	ng/ml

System Monitoring Compounds						
1) SA Tetrachlo...	4.655	3.802	55746231	224.3E6	49.849	58.500
2) SA Decachlor...	10.426	8.814	42665092	277.2E6	43.932	46.094
Target Compounds						
26) L6 AR-1254-1	6.652	5.683	25214303	201.1E6	478.986m	549.285
27) L6 AR-1254-2	6.869	5.830	35822455	158.9E6	450.571	571.152 #
28) L6 AR-1254-3	7.230	6.232	39142452	275.0E6	448.284	562.119 #
29) L6 AR-1254-4	7.512	6.458	28209197	203.0E6	442.085	552.374
30) L6 AR-1254-5	7.928	6.875	35243500	207.3E6	434.329	538.315

(f)=RT Delta > 1/2 Window (#)=Amounts differ by > 25% (m)=manual int.

Data Path : Z:\pestpcbsrv\HPCHEM1\ECD_P\Data\PP081825\
 Data File : PP074483.D
 Signal(s) : Signal #1: ECD1A.ch Signal #2: ECD2B.ch
 Acq On : 19 Aug 2025 01:52
 Operator : YP\AJ
 Sample : AR1254CCC500
 Misc :
 ALS Vial : 5 Sample Multiplier: 1

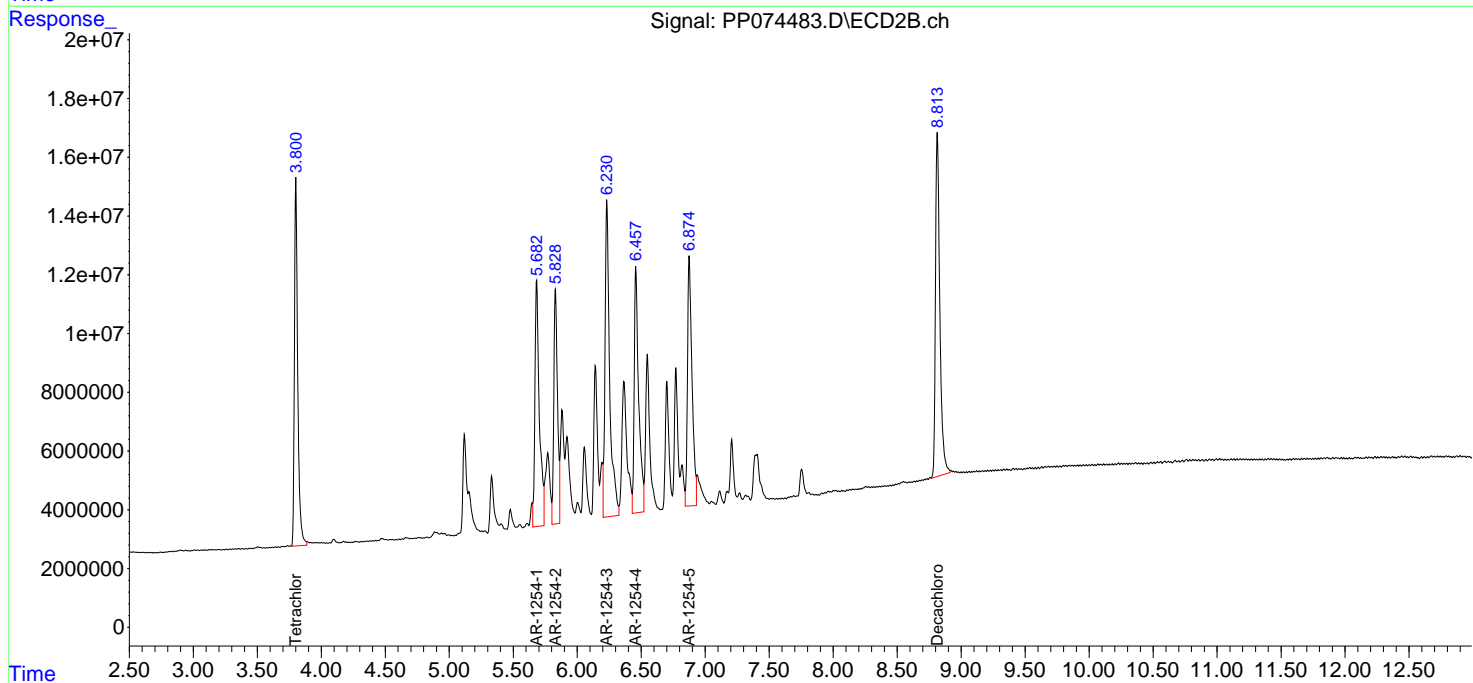
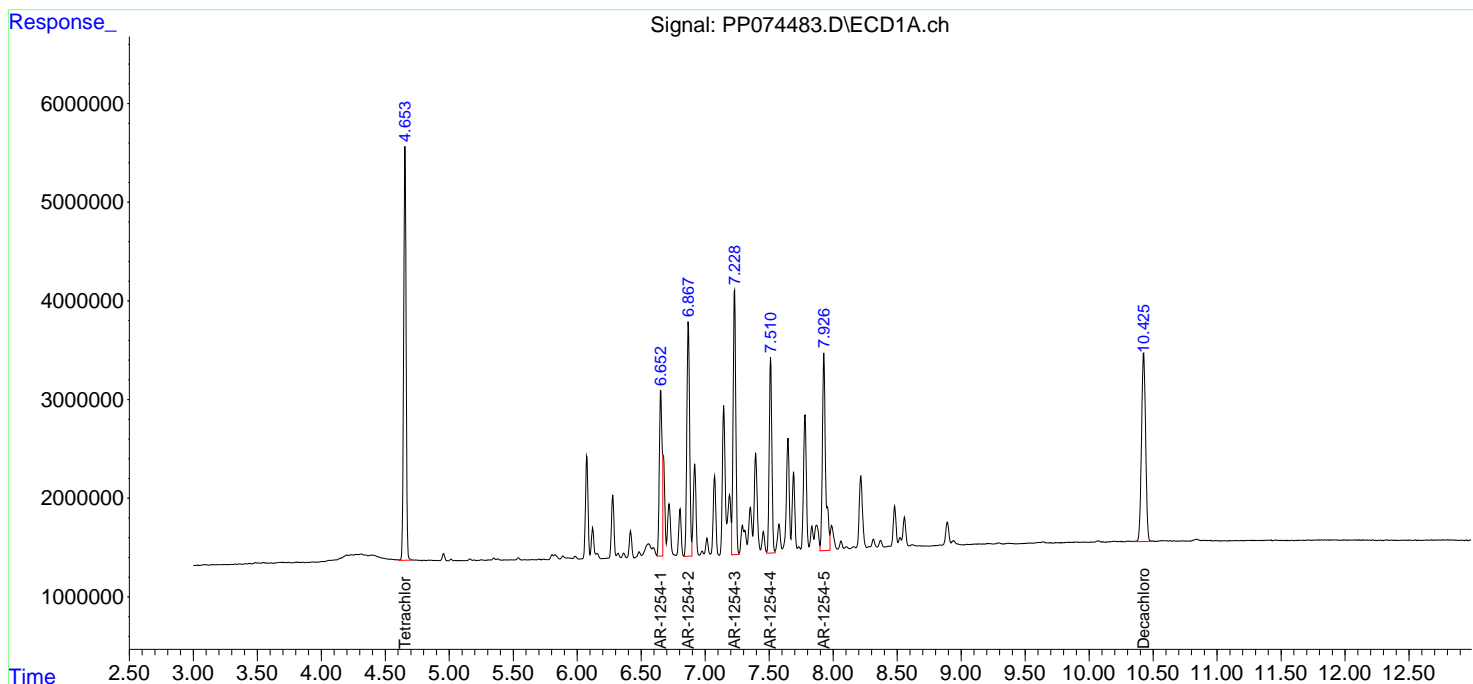
Instrument :
 ECD_P
 ClientSampleId :
 AR1254CCC500

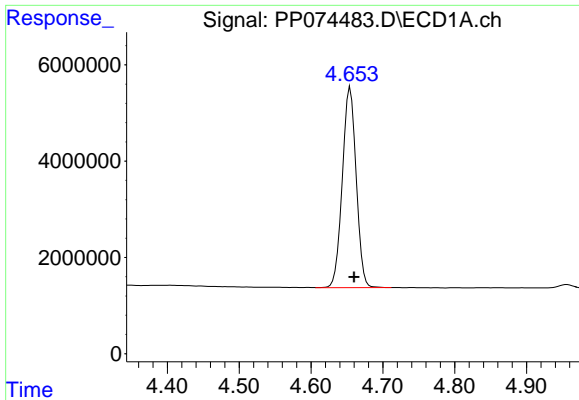
Manual Integrations
 APPROVED

Reviewed By :Yogesh Patel 08/19/2025
 Supervised By :mohammad ahmed 08/20/2025

Integration File signal 1: autoint1.e
 Integration File signal 2: autoint2.e
 Quant Time: Aug 19 02:23:10 2025
 Quant Method : Z:\pestpcbsrv\HPCHEM1\ECD_P\methods\PP080125.M
 Quant Title : GC EXTRACTABLES
 QLast Update : Mon Aug 04 11:01:49 2025
 Response via : Initial Calibration
 Integrator: ChemStation

Volume Inj. : 2 µl
 Signal #1 Phase : ZB-MR1 Signal #2 Phase: ZB-MR2
 Signal #1 Info : 30Mx0.32mmx 0.50µ Signal #2 Info : 30M x 0.32mm x 0.25µm

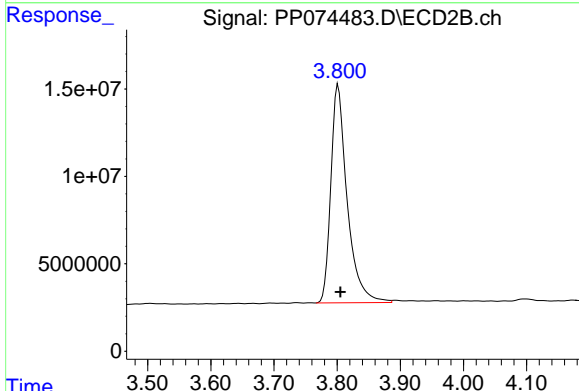




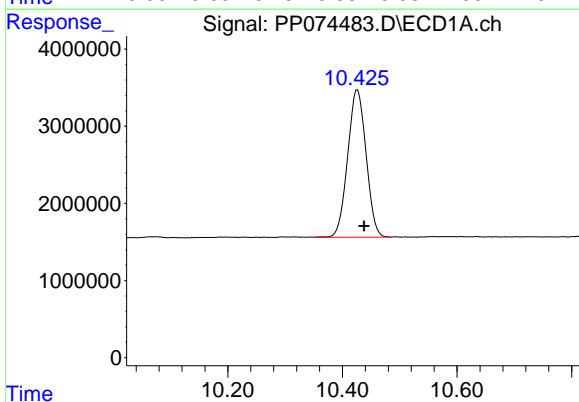
#1 Tetrachloro-m-xylene
 R.T.: 4.655 min
 Delta R.T.: -0.005 min
 Response: 55746231
 Conc: 49.85 ng/ml

Instrument : ECD_P
 ClientSampleId : AR1254CCC500

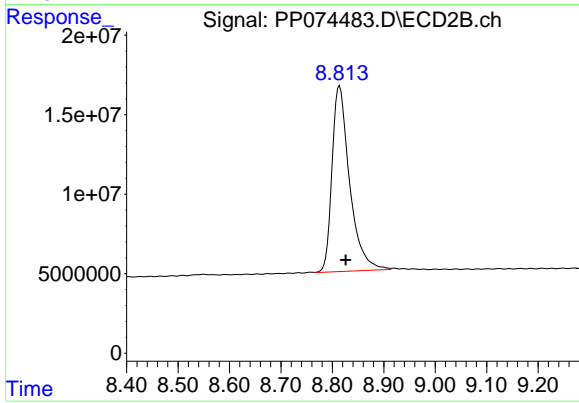
Manual Integrations
APPROVED
 Reviewed By :Yogesh Patel 08/19/2025
 Supervised By :mohammad ahmed 08/20/2025



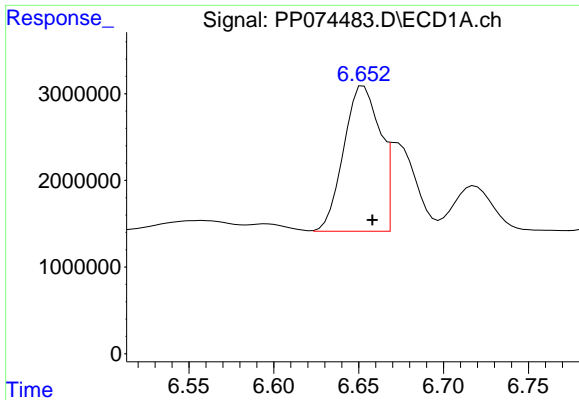
#1 Tetrachloro-m-xylene
 R.T.: 3.802 min
 Delta R.T.: -0.004 min
 Response: 224312087
 Conc: 58.50 ng/ml



#2 Decachlorobiphenyl
 R.T.: 10.426 min
 Delta R.T.: -0.012 min
 Response: 42665092
 Conc: 43.93 ng/ml



#2 Decachlorobiphenyl
 R.T.: 8.814 min
 Delta R.T.: -0.012 min
 Response: 277194715
 Conc: 46.09 ng/ml



#26 AR-1254-1

R.T.: 6.652 min
 Delta R.T.: -0.007 min
 Response: 25214303
 Conc: 478.99 ng/ml

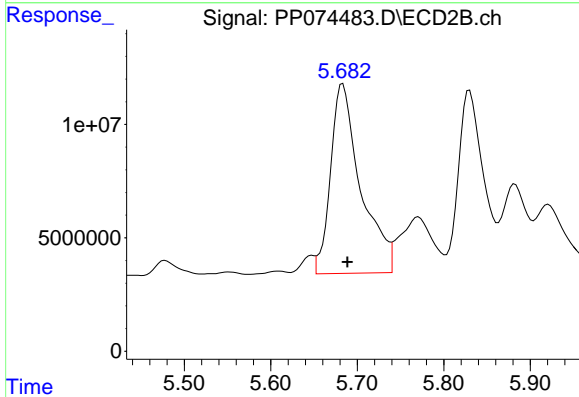
Instrument :

ECD_P

Client Sample Id :
 AR1254CCC500

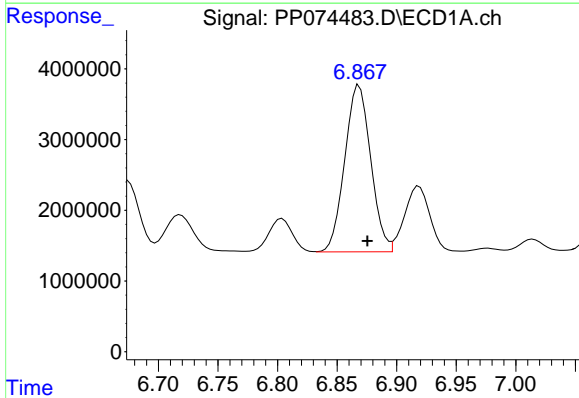
Manual Integrations
 APPROVED

Reviewed By :Yogesh Patel 08/19/2025
 Supervised By :mohammad ahmed 08/20/2025



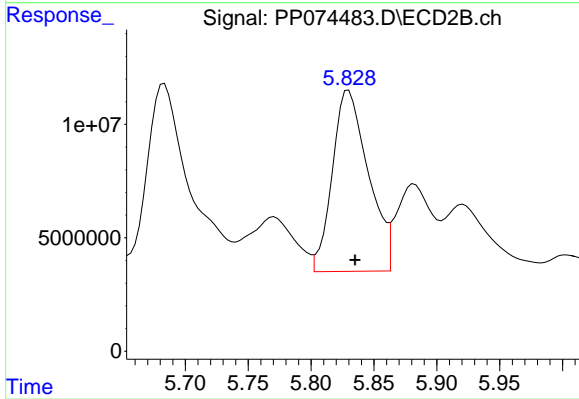
#26 AR-1254-1

R.T.: 5.683 min
 Delta R.T.: -0.005 min
 Response: 201138142
 Conc: 549.28 ng/ml



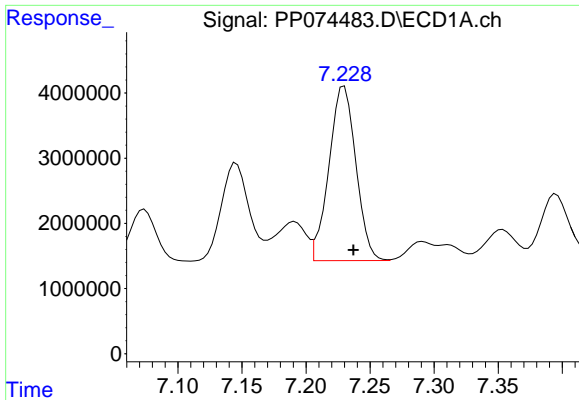
#27 AR-1254-2

R.T.: 6.869 min
 Delta R.T.: -0.007 min
 Response: 35822455
 Conc: 450.57 ng/ml



#27 AR-1254-2

R.T.: 5.830 min
 Delta R.T.: -0.005 min
 Response: 158904173
 Conc: 571.15 ng/ml



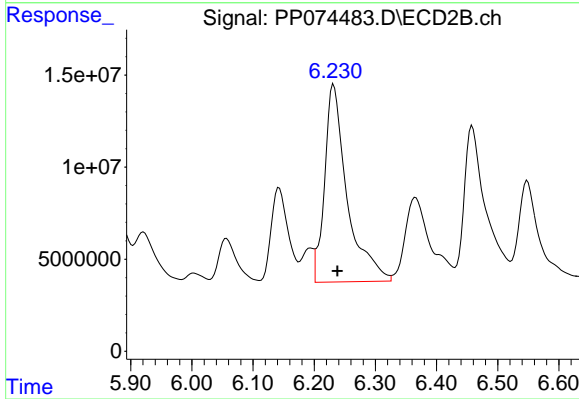
#28 AR-1254-3

R.T.: 7.230 min
 Delta R.T.: -0.007 min
 Response: 39142452
 Conc: 448.28 ng/ml

Instrument :
 ECD_P
 ClientSampleId :
 AR1254CCC500

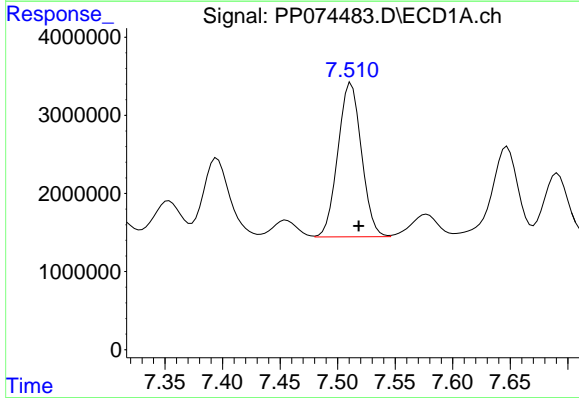
Manual Integrations
 APPROVED

Reviewed By :Yogesh Patel 08/19/2025
 Supervised By :mohammad ahmed 08/20/2025



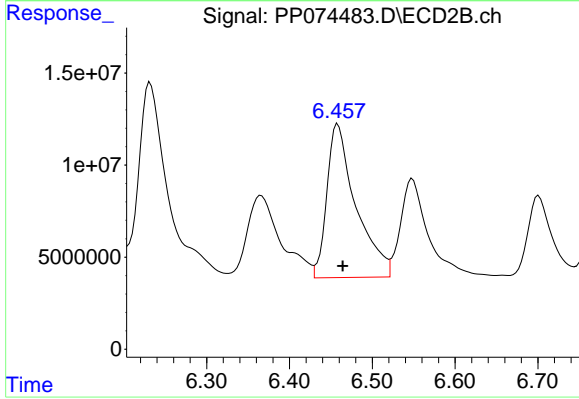
#28 AR-1254-3

R.T.: 6.232 min
 Delta R.T.: -0.006 min
 Response: 274995064
 Conc: 562.12 ng/ml



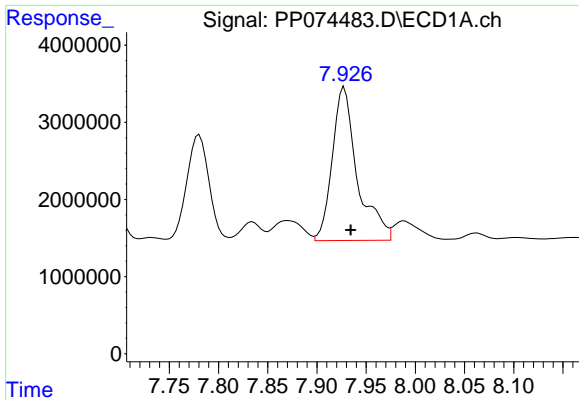
#29 AR-1254-4

R.T.: 7.512 min
 Delta R.T.: -0.007 min
 Response: 28209197
 Conc: 442.08 ng/ml



#29 AR-1254-4

R.T.: 6.458 min
 Delta R.T.: -0.006 min
 Response: 203033652
 Conc: 552.37 ng/ml



#30 AR-1254-5

R.T.: 7.928 min
 Delta R.T.: -0.007 min
 Response: 35243500
 Conc: 434.33 ng/ml

Instrument :

ECD_P

ClientSampleId :

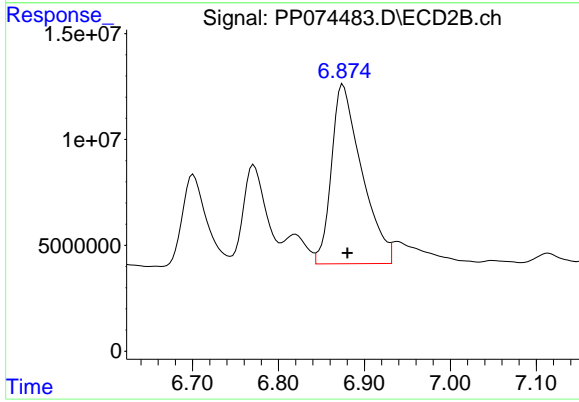
AR1254CCC500

Manual Integrations

APPROVED

Reviewed By :Yogesh Patel 08/19/2025

Supervised By :mohammad ahmed 08/20/2025



#30 AR-1254-5

R.T.: 6.875 min
 Delta R.T.: -0.005 min
 Response: 207341385
 Conc: 538.32 ng/ml