

Data Path : Z:\pestpcbsrv\HPCHEM1\ECD\_P\Data\PP081825\  
 Data File : PP074486.D  
 Signal(s) : Signal #1: ECD1A.ch Signal #2: ECD2B.ch  
 Acq On : 19 Aug 2025 02:41  
 Operator : YP\AJ  
 Sample : Q2865-03 10X  
 Misc :  
 ALS Vial : 37 Sample Multiplier: 1

**Instrument :**  
 ECD\_P  
**ClientSampleId :**  
 LAW-25-0109

**Manual Integrations**  
**APPROVED**

Reviewed By :Yogesh Patel 08/19/2025  
 Supervised By :mohammad ahmed 08/20/2025

Integration File signal 1: autoint1.e  
 Integration File signal 2: autoint2.e  
 Quant Time: Aug 19 03:31:58 2025  
 Quant Method : Z:\pestpcbsrv\HPCHEM1\ECD\_P\methods\PP080125.M  
 Quant Title : GC EXTRACTABLES  
 QLast Update : Mon Aug 04 11:01:49 2025  
 Response via : Initial Calibration  
 Integrator: ChemStation

Volume Inj. : 2 µl  
 Signal #1 Phase : ZB-MR1 Signal #2 Phase: ZB-MR2  
 Signal #1 Info : 30Mx0.32mmx 0.50µ Signal #2 Info : 30M x 0.32mm x 0.25µm

Compound	RT#1	RT#2	Resp#1	Resp#2	ng/ml	ng/ml
-----						
System Monitoring Compounds						
1) SA Tetrachlo...	4.658	3.832f	1623446	21583781	1.452	5.629m#
2) SA Decachlor...	10.428	8.815	1636608	5462553	1.685	0.908m#

Target Compounds

(f)=RT Delta > 1/2 Window (#)=Amounts differ by > 25% (m)=manual int.

Data Path : Z:\pestpcbsrv\HPCHEM1\ECD\_P\Data\PP081825\  
 Data File : PP074486.D  
 Signal(s) : Signal #1: ECD1A.ch Signal #2: ECD2B.ch  
 Acq On : 19 Aug 2025 02:41  
 Operator : YP\AJ  
 Sample : Q2865-03 10X  
 Misc :  
 ALS Vial : 37 Sample Multiplier: 1

**Instrument :**

ECD\_P

**ClientSampleId :**

LAW-25-0109

**Manual Integrations**

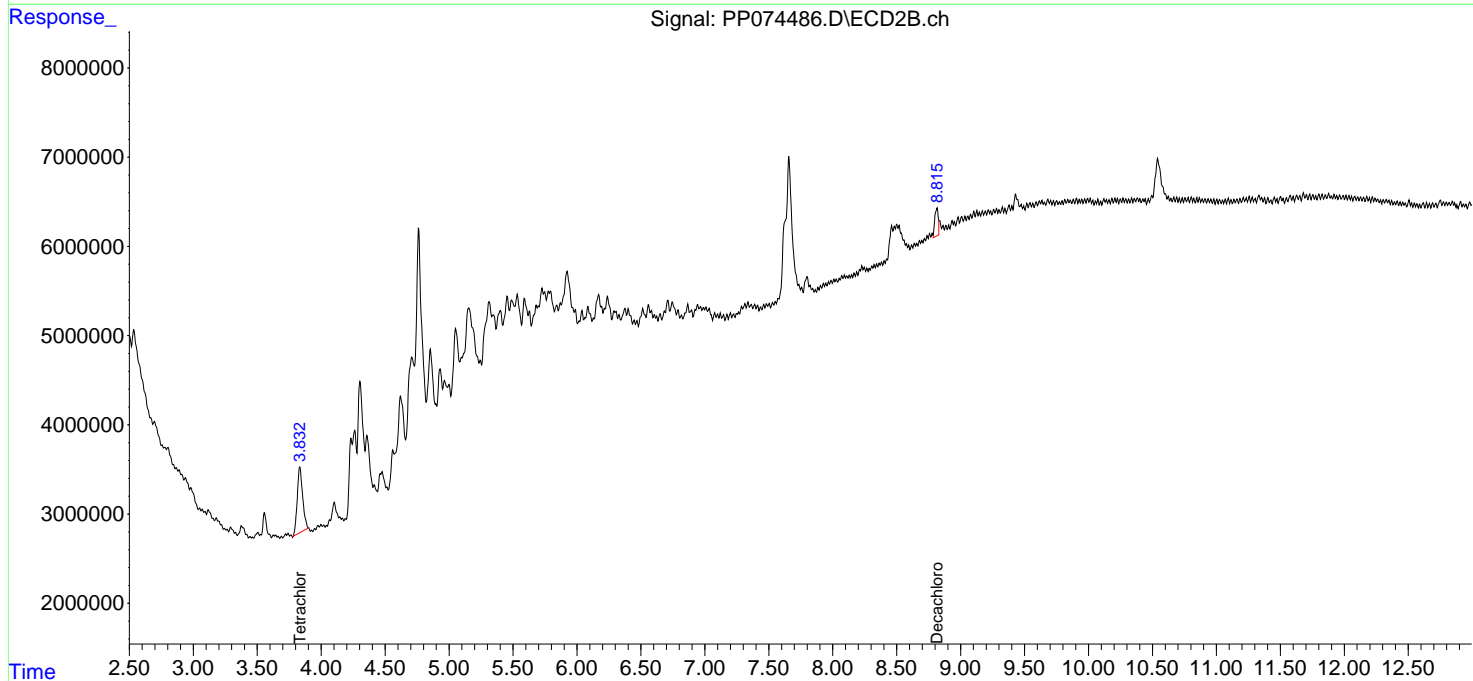
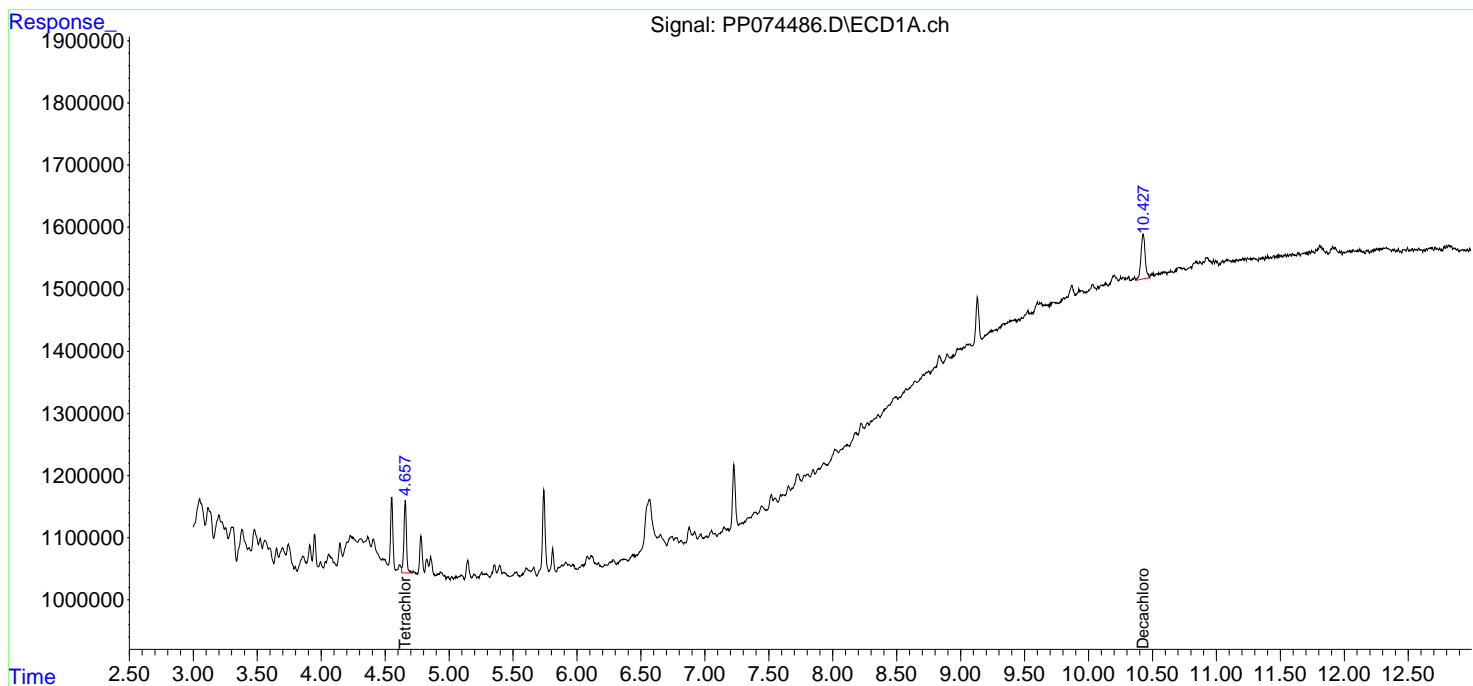
**APPROVED**

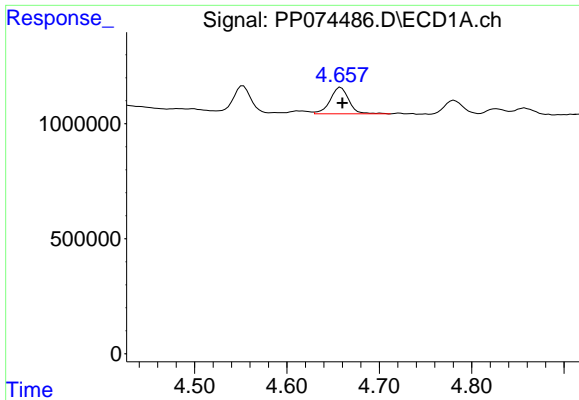
Reviewed By :Yogesh Patel 08/19/2025

Supervised By :mohammad ahmed 08/20/2025

Integration File signal 1: autoint1.e  
 Integration File signal 2: autoint2.e  
 Quant Time: Aug 19 03:31:58 2025  
 Quant Method : Z:\pestpcbsrv\HPCHEM1\ECD\_P\methods\PP080125.M  
 Quant Title : GC EXTRACTABLES  
 QLast Update : Mon Aug 04 11:01:49 2025  
 Response via : Initial Calibration  
 Integrator: ChemStation

Volume Inj. : 2 µl  
 Signal #1 Phase : ZB-MR1 Signal #2 Phase: ZB-MR2  
 Signal #1 Info : 30Mx0.32mmx 0.50µm Signal #2 Info : 30M x 0.32mm x 0.25µm



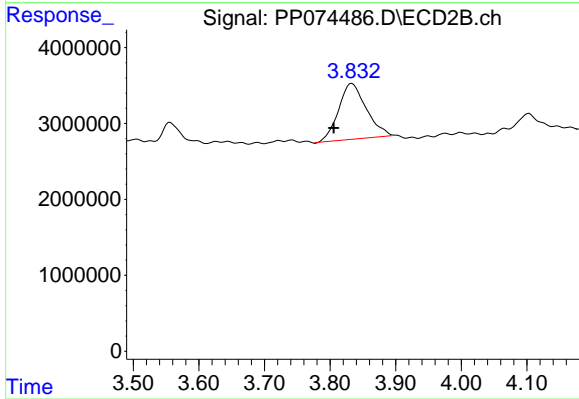


#1 Tetrachloro-m-xylene  
 R.T.: 4.658 min  
 Delta R.T.: -0.002 min  
 Response: 1623446  
 Conc: 1.45 ng/ml

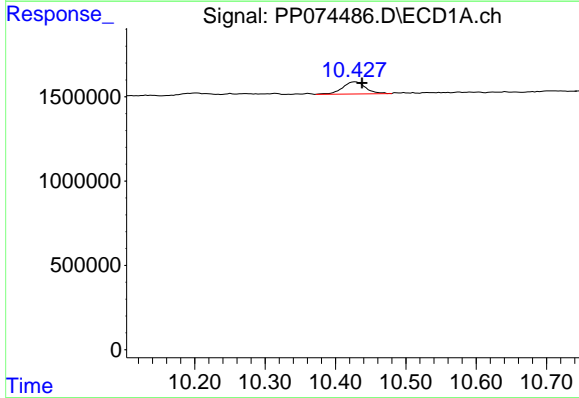
Instrument :  
 ECD\_P  
 ClientSampleId :  
 LAW-25-0109

Manual Integrations  
 APPROVED

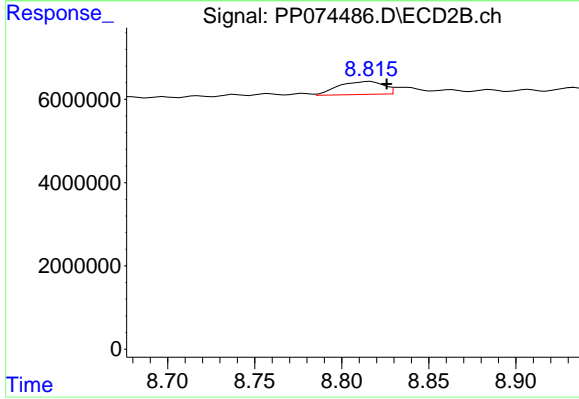
Reviewed By :Yogesh Patel 08/19/2025  
 Supervised By :mohammad ahmed 08/20/2025



#1 Tetrachloro-m-xylene  
 R.T.: 3.832 min  
 Delta R.T.: 0.026 min  
 Response: 21583781  
 Conc: 5.63 ng/ml m



#2 Decachlorobiphenyl  
 R.T.: 10.428 min  
 Delta R.T.: -0.010 min  
 Response: 1636608  
 Conc: 1.69 ng/ml



#2 Decachlorobiphenyl  
 R.T.: 8.815 min  
 Delta R.T.: -0.011 min  
 Response: 5462553  
 Conc: 0.91 ng/ml m