

Data Path : Z:\pestpcbsrv\HPCHEM1\ECD_P\Data\PP081921\
 Data File : PP038594.D
 Signal(s) : Signal #1: ECD1A.CH Signal #2: ECD2B.CH
 Acq On : 19 Aug 2021 16:30
 Operator : AJ\MA
 Sample : M3449-10
 Misc :
 ALS Vial : 17 Sample Multiplier: 1

Instrument :
 ECD_P
 ClientSampleId :
 TP4

Integration File signal 1: autoint1.e
 Integration File signal 2: autoint2.e
 Quant Time: Aug 20 01:36:54 2021
 Quant Method : Z:\pestpcbsrv\HPCHEM1\ECD_P\methods\PP081721.M
 Quant Title : GC EXTRACTABLES
 QLast Update : Wed Aug 18 04:51:26 2021
 Response via : Initial Calibration
 Integrator: ChemStation 6890 Scale Mode: Small noise peaks clipped

Volume Inj. : 2 µl
 Signal #1 Phase : ZB-MR1 Signal #2 Phase: ZB-MR2
 Signal #1 Info : 30Mx0.32mmx 0.50µ Signal #2 Info : 30M x 0.32mm x 0.25µm

Compound	RT#1	RT#2	Resp#1	Resp#2	ng/ml	ng/ml

System Monitoring Compounds						
1) SA Tetrachlo...	4.885	3.871	869644	533265	21.548	22.253
2) SA Decachlor...	10.873	9.132	536862	513583	21.820	21.087
Target Compounds						
28) L6 AR-1254-3	7.746f	0.000	28555	0	15.907	N.D. #
30) L6 AR-1254-5	8.468f	0.000	91760	0	74.191	N.D. #
32) L7 AR-1260-2	8.157	0.000	58348	0	39.768	N.D. #
35) L7 AR-1260-5	9.080	0.000	13149	0	5.860	N.D. #
37) L8 AR-1262-2	9.080	0.000	13149	0	4.939	N.D. #

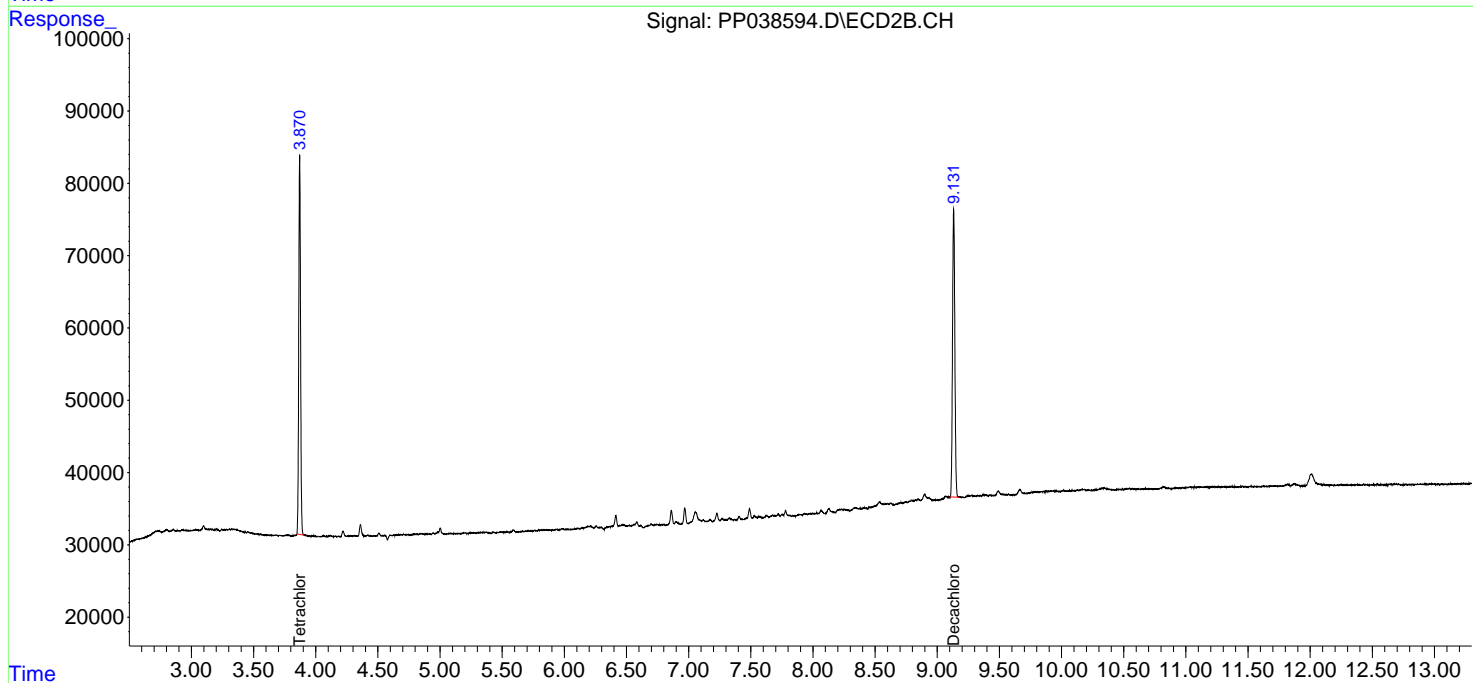
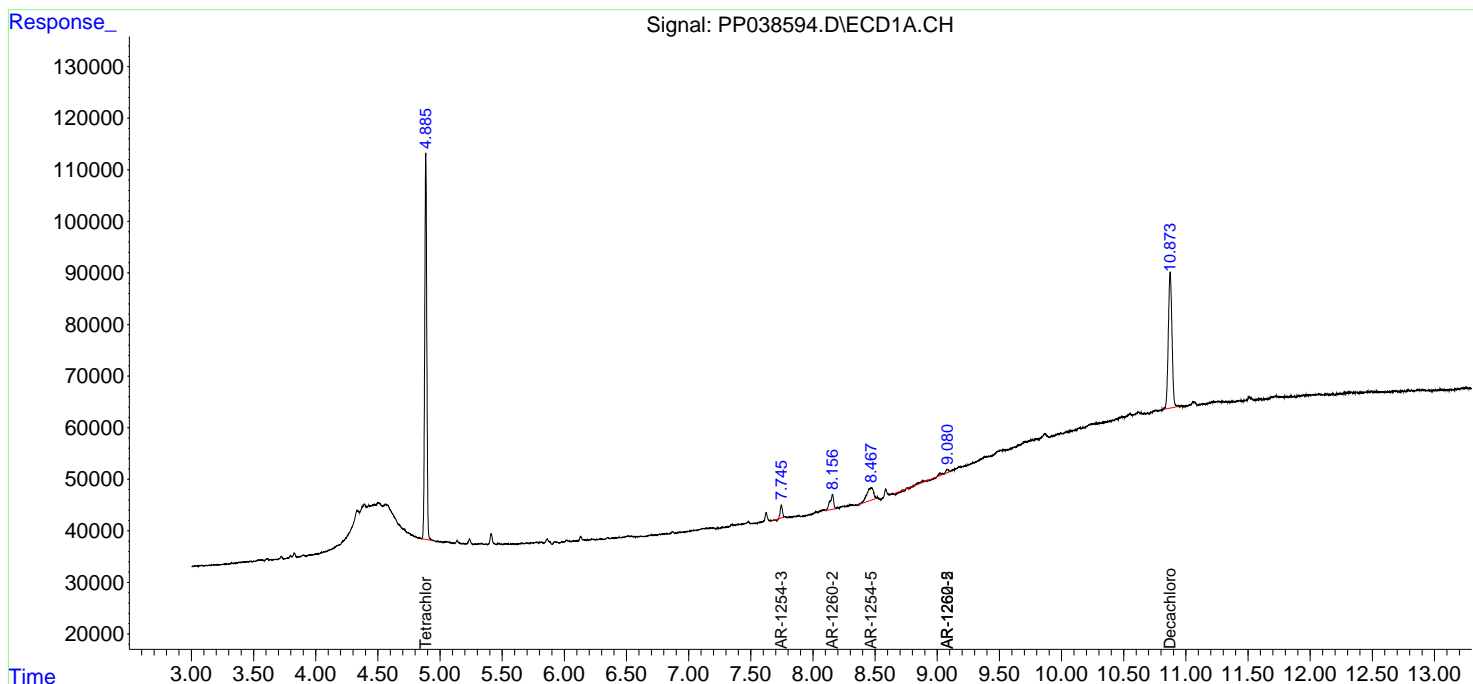
(f)=RT Delta > 1/2 Window (#)=Amounts differ by > 25% (m)=manual int.

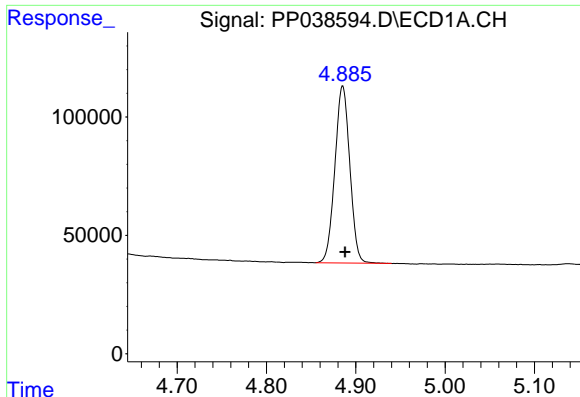
Data Path : Z:\pestpcbsrv\HPCHEM1\ECD_P\Data\PP081921\
 Data File : PP038594.D
 Signal(s) : Signal #1: ECD1A.CH Signal #2: ECD2B.CH
 Acq On : 19 Aug 2021 16:30
 Operator : AJ\MA
 Sample : M3449-10
 Misc :
 ALS Vial : 17 Sample Multiplier: 1

Instrument :
 ECD_P
 ClientSampled :
 TP4

Integration File signal 1: autoint1.e
 Integration File signal 2: autoint2.e
 Quant Time: Aug 20 01:36:54 2021
 Quant Method : Z:\pestpcbsrv\HPCHEM1\ECD_P\methods\PP081721.M
 Quant Title : GC EXTRACTABLES
 QLast Update : Wed Aug 18 04:51:26 2021
 Response via : Initial Calibration
 Integrator: ChemStation 6890 Scale Mode: Small noise peaks clipped

Volume Inj. : 2 µl
 Signal #1 Phase : ZB-MR1 Signal #2 Phase: ZB-MR2
 Signal #1 Info : 30Mx0.32mmx 0.50µ Signal #2 Info : 30M x 0.32mm x 0.25µm

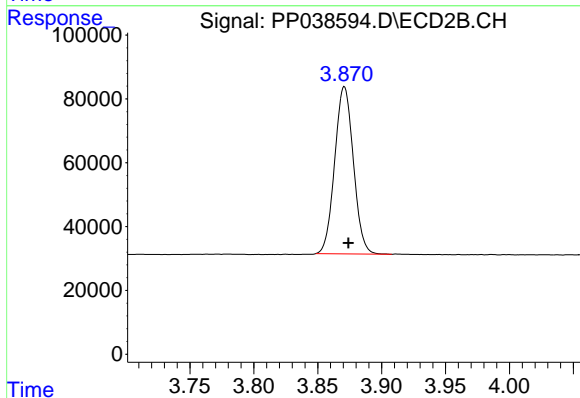




#1 Tetrachloro-m-xylene

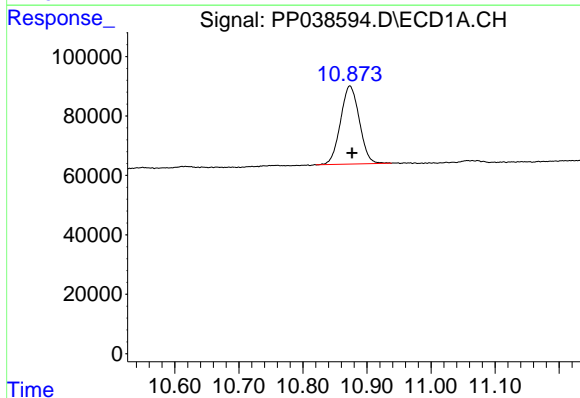
R.T.: 4.885 min
 Delta R.T.: -0.003 min
 Response: 869644
 Conc: 21.55 ng/ml

Instrument :
 ECD_P
 ClientSampled :
 TP4



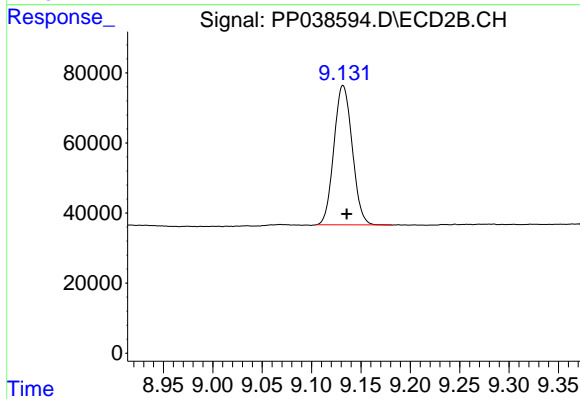
#1 Tetrachloro-m-xylene

R.T.: 3.871 min
 Delta R.T.: -0.003 min
 Response: 533265
 Conc: 22.25 ng/ml



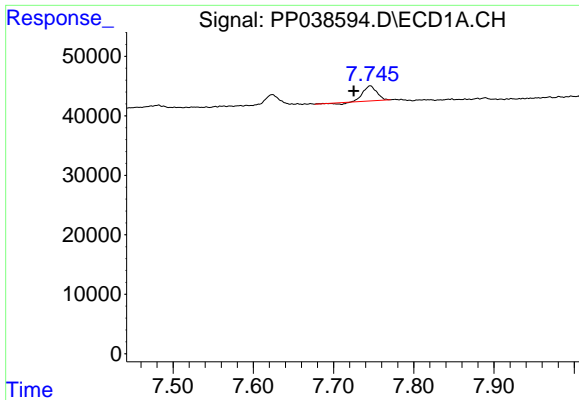
#2 Decachlorobiphenyl

R.T.: 10.873 min
 Delta R.T.: -0.004 min
 Response: 536862
 Conc: 21.82 ng/ml



#2 Decachlorobiphenyl

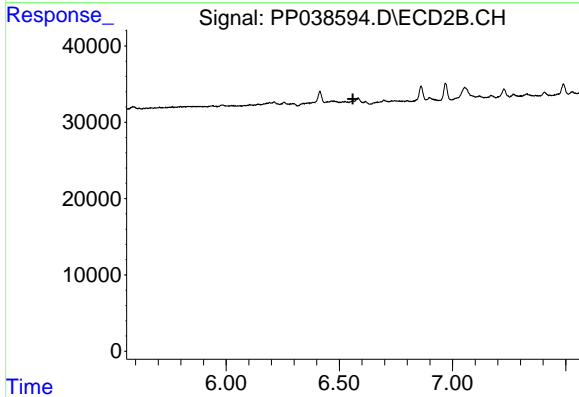
R.T.: 9.132 min
 Delta R.T.: -0.004 min
 Response: 513583
 Conc: 21.09 ng/ml



#28 AR-1254-3

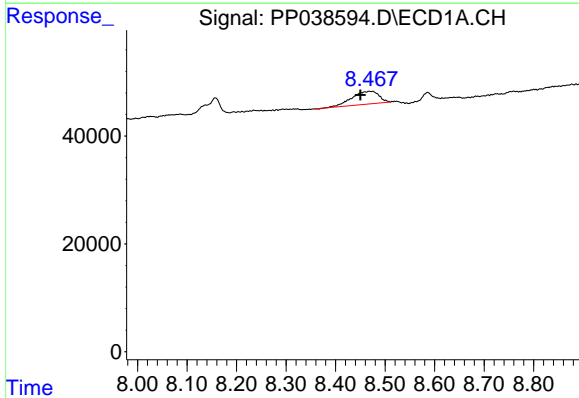
R.T.: 7.746 min
 Delta R.T.: 0.021 min
 Response: 28555
 Conc: 15.91 ng/ml

Instrument :
 ECD_P
 ClientSampleId :
 TP4



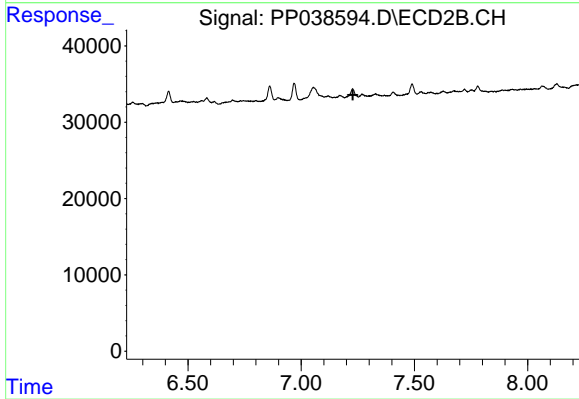
#28 AR-1254-3

R.T.: 0.000 min
 Exp R.T. : 6.560 min
 Response: 0
 Conc: N.D.



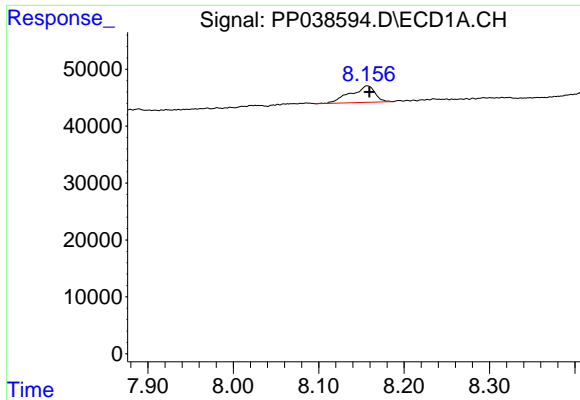
#30 AR-1254-5

R.T.: 8.468 min
 Delta R.T.: 0.017 min
 Response: 91760
 Conc: 74.19 ng/ml



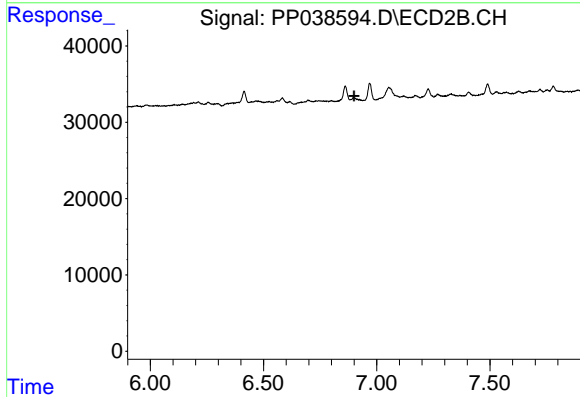
#30 AR-1254-5

R.T.: 0.000 min
 Exp R.T. : 7.228 min
 Response: 0
 Conc: N.D.

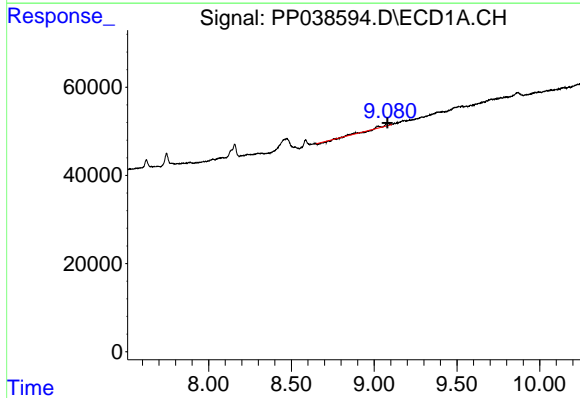


#32 AR-1260-2
 R.T.: 8.157 min
 Delta R.T.: -0.003 min
 Response: 58348
 Conc: 39.77 ng/ml

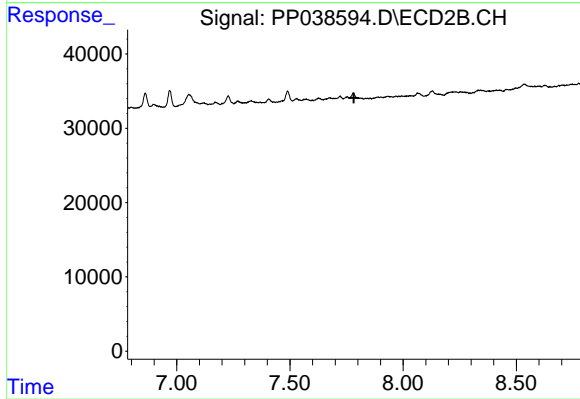
Instrument :
 ECD_P
 ClientSampleId :
 TP4



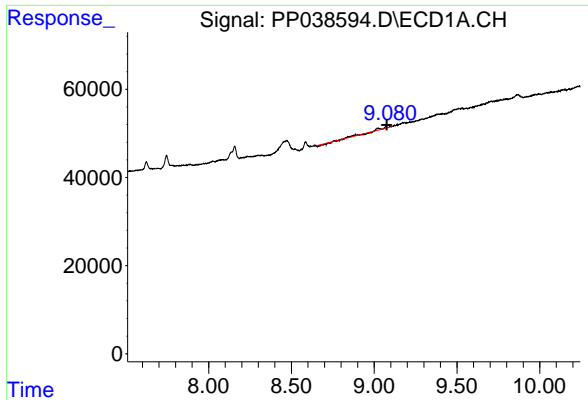
#32 AR-1260-2
 R.T.: 0.000 min
 Exp R.T. : 6.899 min
 Response: 0
 Conc: N.D.



#35 AR-1260-5
 R.T.: 9.080 min
 Delta R.T.: 0.000 min
 Response: 13149
 Conc: 5.86 ng/ml



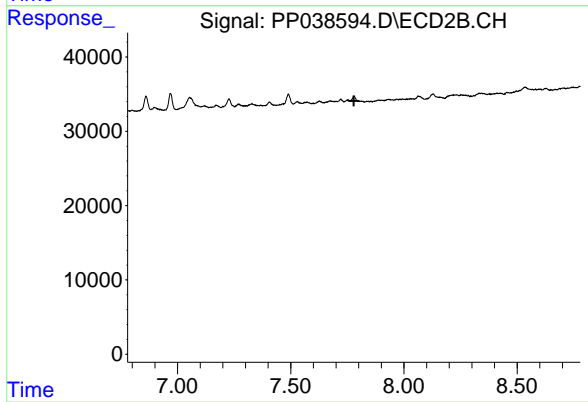
#35 AR-1260-5
 R.T.: 0.000 min
 Exp R.T. : 7.783 min
 Response: 0
 Conc: N.D.



#37 AR-1262-2

R.T.: 9.080 min
Delta R.T.: 0.003 min
Response: 13149
Conc: 4.94 ng/ml

Instrument :
ECD_P
ClientSampleId :
TP4



#37 AR-1262-2

R.T.: 0.000 min
Exp R.T. : 7.779 min
Response: 0
Conc: N.D.