

Data Path : Z:\pestpcbsrv\HPCHEM1\ECD_P\Data\PP081921\
 Data File : PP038600.D
 Signal(s) : Signal #1: ECD1A.CH Signal #2: ECD2B.CH
 Acq On : 19 Aug 2021 18:13
 Operator : AJ\MA
 Sample : AR1242CCC500
 Misc :
 ALS Vial : 4 Sample Multiplier: 1

Instrument :
 ECD_P
 ClientSampled :

Integration File signal 1: autoint1.e
 Integration File signal 2: autoint2.e
 Quant Time: Aug 20 01:38:18 2021
 Quant Method : Z:\pestpcbsrv\HPCHEM1\ECD_P\methods\PP081721.M
 Quant Title : GC EXTRACTABLES
 QLast Update : Wed Aug 18 04:51:26 2021
 Response via : Initial Calibration
 Integrator: ChemStation 6890 Scale Mode: Small noise peaks clipped

Volume Inj. : 2 µl
 Signal #1 Phase : ZB-MR1 Signal #2 Phase: ZB-MR2
 Signal #1 Info : 30Mx0.32mmx 0.50µ Signal #2 Info : 30M x 0.32mm x 0.25µm

	Compound	RT#1	RT#2	Resp#1	Resp#2	ng/ml	ng/ml

System Monitoring Compounds							
1)	SA Tetrachlo...	4.886	3.871	2012326	1248433	49.862	52.096
2)	SA Decachlor...	10.874	9.132	1289148	1220422	52.397	50.108
Target Compounds							
3)	L1 AR-1016-1	6.205	5.115	469220	330212	361.593	378.832
4)	L1 AR-1016-2	6.228	5.134	666232	470060	360.515	377.968
5)	L1 AR-1016-3	6.294	5.324	421155	254103	368.607	373.162
6)	L1 AR-1016-4	6.401	5.378	352086	186601	377.522	356.325
7)	L1 AR-1016-5	6.715	5.604	325568	249066	384.065	375.520
8)	L2 AR-1221-1	5.132	4.123	60085	36492	128.481	133.382
9)	L2 AR-1221-2	5.235	4.222	87224	56442	246.218	263.836
10)	L2 AR-1221-3	5.321	4.310	317763	199747	298.372	295.825
11)	L3 AR-1232-1	5.321	4.310	317763	199747	321.291	321.587
12)	L3 AR-1232-2	5.909	5.134	371721	470060	798.275	823.574
13)	L3 AR-1232-3	6.228	5.324	666232	254103	780.351	869.273
14)	L3 AR-1232-4	6.401	5.422	352086	236933	831.550	957.623
15)	L3 AR-1232-5	6.498	5.604	248075	249066	923.196	921.209
16)	L4 AR-1242-1	6.205	5.115	469220	330212	471.073	478.264
17)	L4 AR-1242-2	6.228	5.134	666232	470060	463.631	481.535
18)	L4 AR-1242-3	6.294	5.324	421155	254103	470.434	483.218
19)	L4 AR-1242-4	6.401	5.422	352086	236933	480.831	495.674
20)	L4 AR-1242-5	7.184	5.983	337866	305628	472.567	493.707
21)	L5 AR-1248-1	6.205	5.115	469220	330212	588.874	605.990
22)	L5 AR-1248-2	6.498	5.378	248075	186601	253.022	251.071
23)	L5 AR-1248-3	6.715	5.422	325568	236933	282.042	312.017
24)	L5 AR-1248-4	7.144	5.604	321738	249066	260.546	269.271
25)	L5 AR-1248-5	7.184	6.025	337866	263167	276.333	291.470
26)	L6 AR-1254-1	7.113	5.983	252968	305628	221.703	232.720
27)	L6 AR-1254-2	7.349	6.143	276335	73489	160.022	64.027 #
28)	L6 AR-1254-3	7.726	6.560	161064	103689	89.723	55.724 #
29)	L6 AR-1254-4	8.022	6.800	79764	69654	61.817	59.603
30)	L6 AR-1254-5	8.451	0.000	13720	0	11.093	N.D. #
31)	L7 AR-1260-1	0.000	6.706	0	58626	N.D.	50.100 #
32)	L7 AR-1260-2	8.139f	0.000	64600	0	44.030	N.D. #

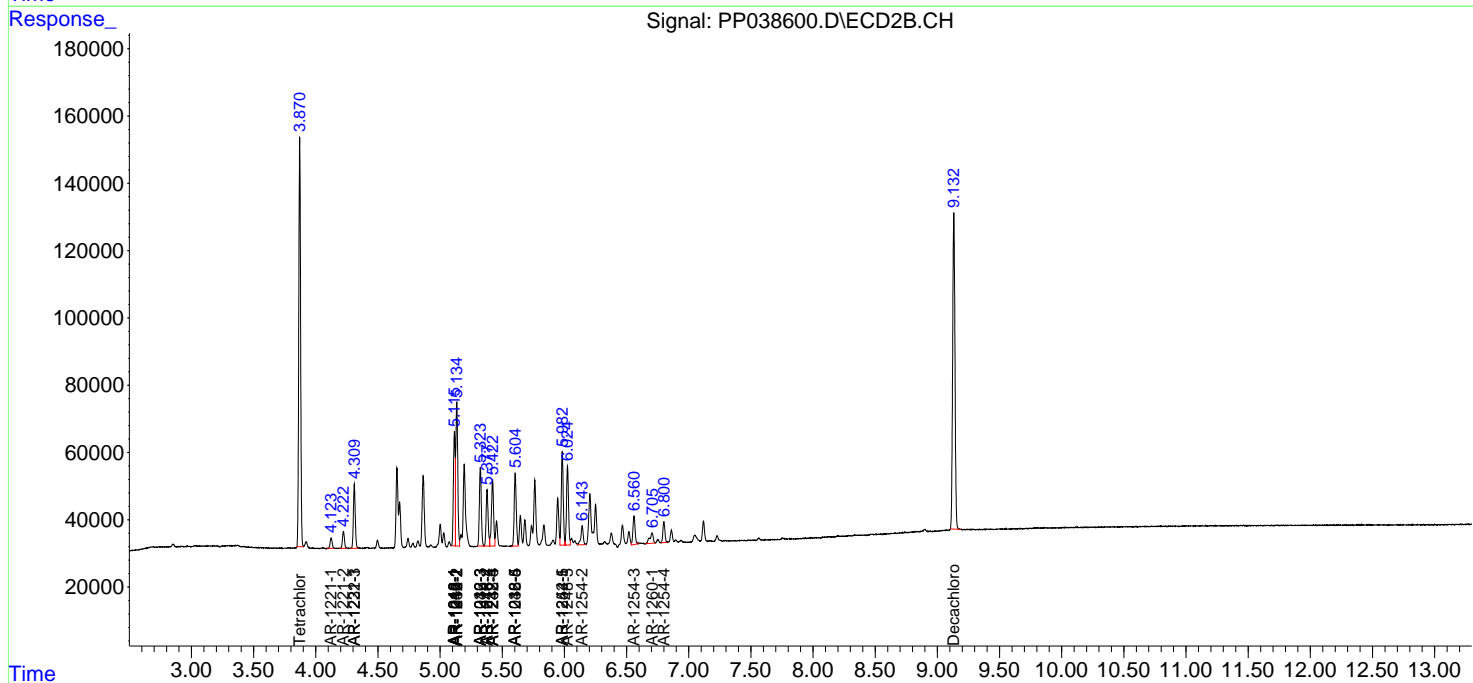
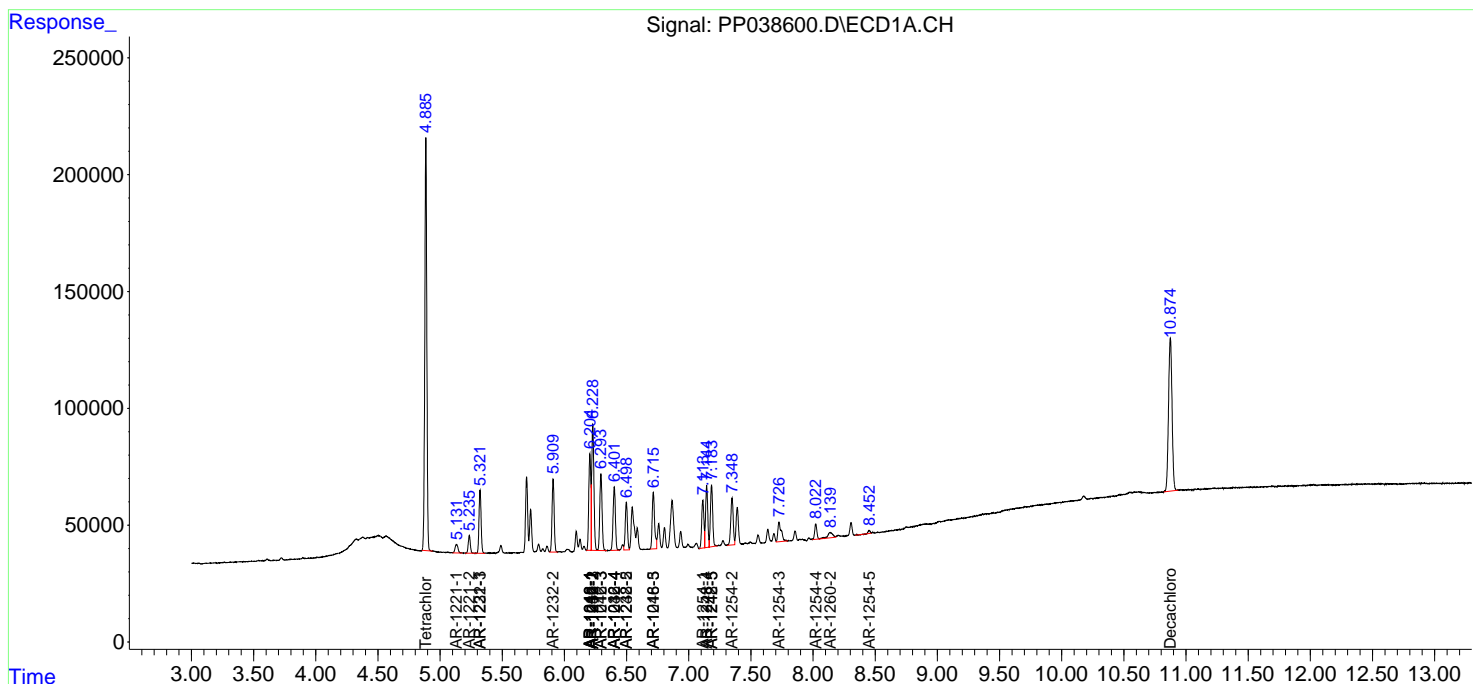
(f)=RT Delta > 1/2 Window (#)=Amounts differ by > 25% (m)=manual int.

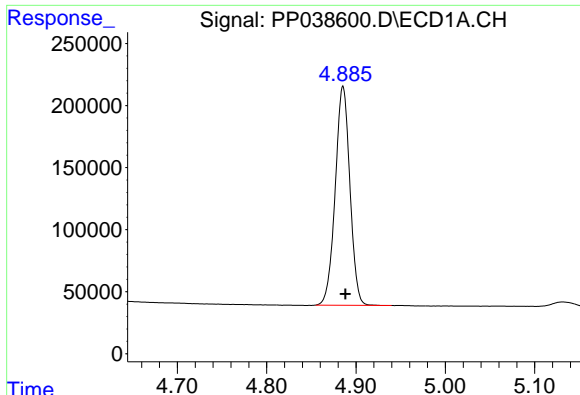
Data Path : Z:\pestpcbsrv\HPCHEM1\ECD_P\Data\PP081921\
 Data File : PP038600.D
 Signal(s) : Signal #1: ECD1A.CH Signal #2: ECD2B.CH
 Acq On : 19 Aug 2021 18:13
 Operator : AJ\MA
 Sample : AR1242CCC500
 Misc :
 ALS Vial : 4 Sample Multiplier: 1

Instrument :
 ECD_P
 ClientSampled :

Integration File signal 1: autoint1.e
 Integration File signal 2: autoint2.e
 Quant Time: Aug 20 01:38:18 2021
 Quant Method : Z:\pestpcbsrv\HPCHEM1\ECD_P\methods\PP081721.M
 Quant Title : GC EXTRACTABLES
 QLast Update : Wed Aug 18 04:51:26 2021
 Response via : Initial Calibration
 Integrator: ChemStation 6890 Scale Mode: Small noise peaks clipped

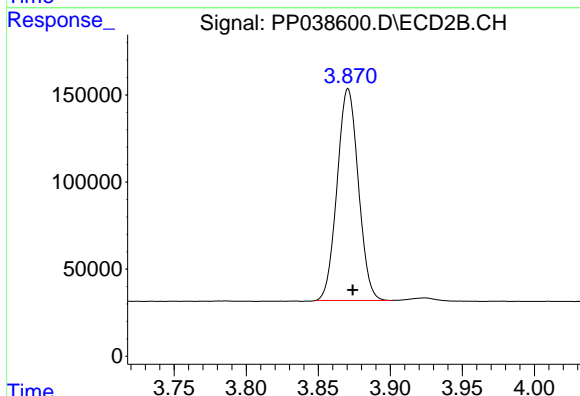
Volume Inj. : 2 µl
 Signal #1 Phase : ZB-MR1 Signal #2 Phase: ZB-MR2
 Signal #1 Info : 30Mx0.32mmx 0.50µ Signal #2 Info : 30M x 0.32mm x 0.25µm



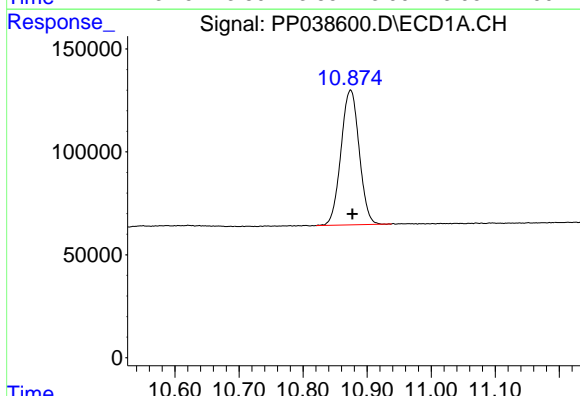


#1 Tetrachloro-m-xylene
 R.T.: 4.886 min
 Delta R.T.: -0.002 min
 Response: 2012326
 Conc: 49.86 ng/ml

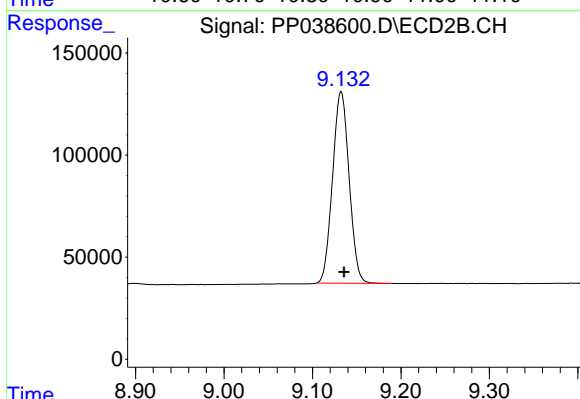
Instrument :
 ECD_P
 ClientSampleId :



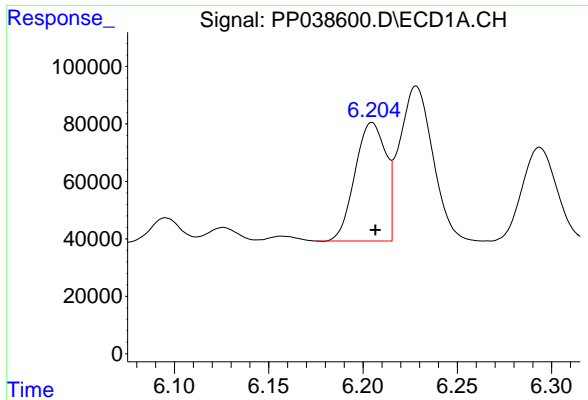
#1 Tetrachloro-m-xylene
 R.T.: 3.871 min
 Delta R.T.: -0.003 min
 Response: 1248433
 Conc: 52.10 ng/ml



#2 Decachlorobiphenyl
 R.T.: 10.874 min
 Delta R.T.: -0.003 min
 Response: 1289148
 Conc: 52.40 ng/ml



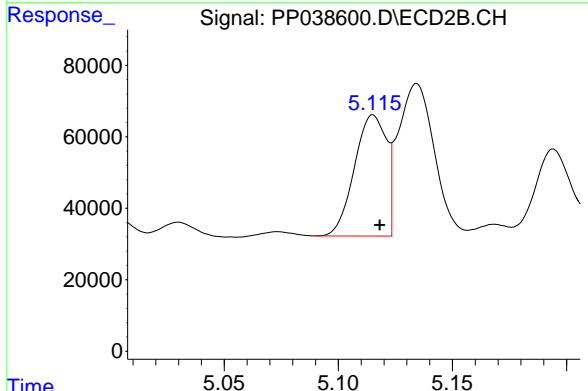
#2 Decachlorobiphenyl
 R.T.: 9.132 min
 Delta R.T.: -0.003 min
 Response: 1220422
 Conc: 50.11 ng/ml



#3 AR-1016-1

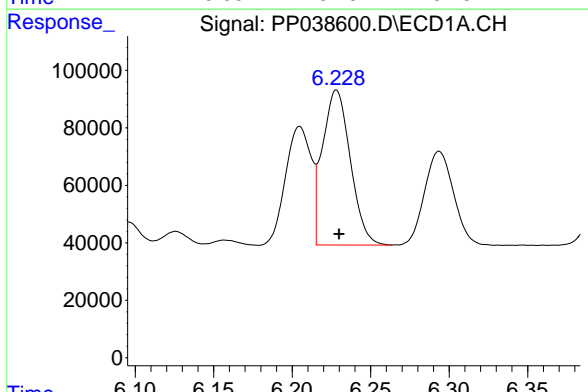
R.T.: 6.205 min
 Delta R.T.: -0.002 min
 Response: 469220
 Conc: 361.59 ng/ml

Instrument :
 ECD_P
 ClientSampleId :



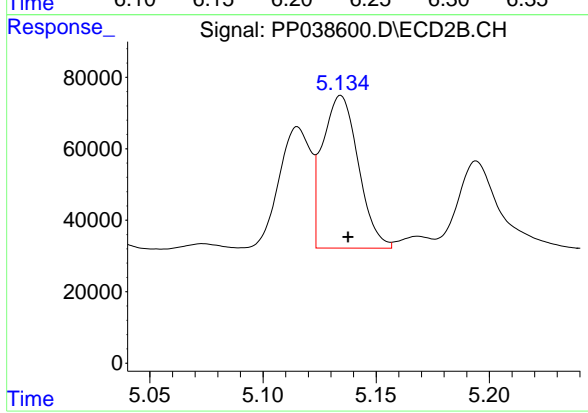
#3 AR-1016-1

R.T.: 5.115 min
 Delta R.T.: -0.003 min
 Response: 330212
 Conc: 378.83 ng/ml



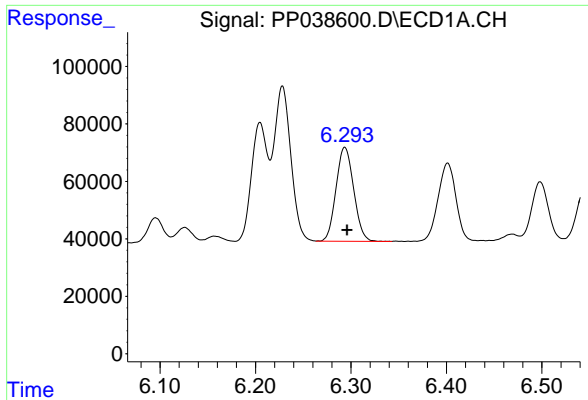
#4 AR-1016-2

R.T.: 6.228 min
 Delta R.T.: -0.002 min
 Response: 666232
 Conc: 360.52 ng/ml



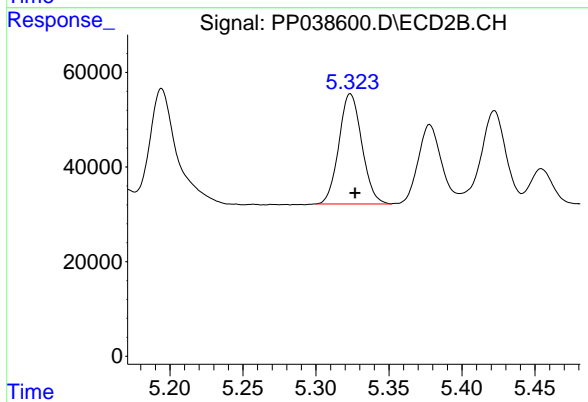
#4 AR-1016-2

R.T.: 5.134 min
 Delta R.T.: -0.003 min
 Response: 470060
 Conc: 377.97 ng/ml

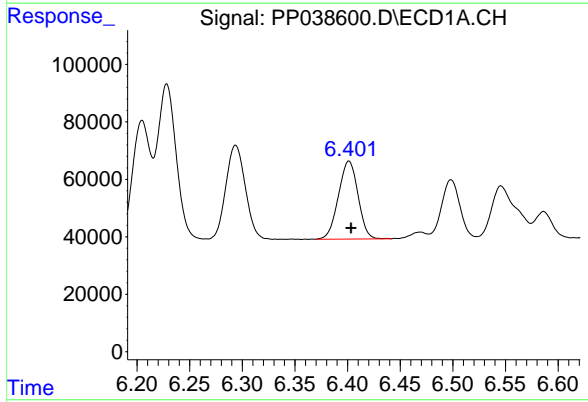


#5 AR-1016-3
 R.T.: 6.294 min
 Delta R.T.: -0.002 min
 Response: 421155
 Conc: 368.61 ng/ml

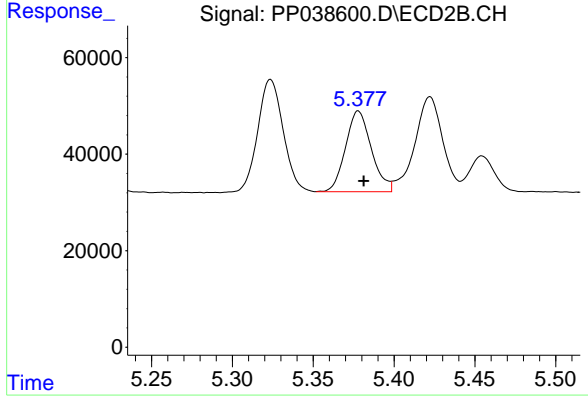
Instrument :
 ECD_P
 ClientSampleId :



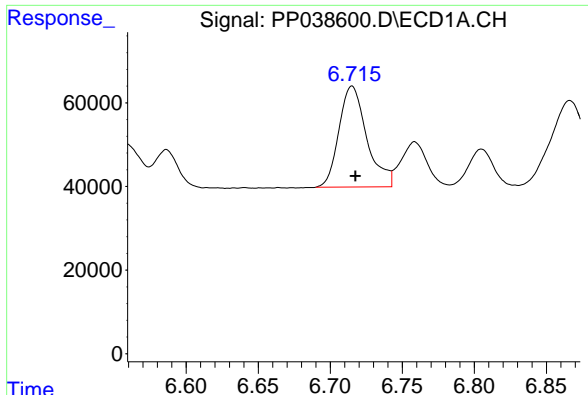
#5 AR-1016-3
 R.T.: 5.324 min
 Delta R.T.: -0.003 min
 Response: 254103
 Conc: 373.16 ng/ml



#6 AR-1016-4
 R.T.: 6.401 min
 Delta R.T.: -0.002 min
 Response: 352086
 Conc: 377.52 ng/ml



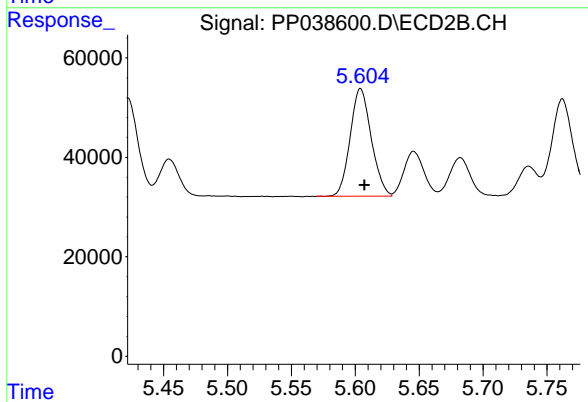
#6 AR-1016-4
 R.T.: 5.378 min
 Delta R.T.: -0.003 min
 Response: 186601
 Conc: 356.32 ng/ml



#7 AR-1016-5

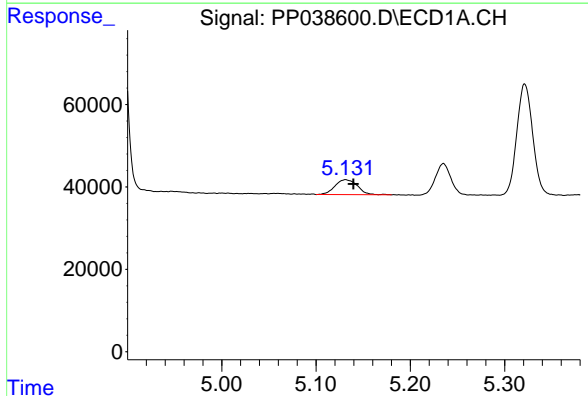
R.T.: 6.715 min
 Delta R.T.: -0.002 min
 Response: 325568
 Conc: 384.07 ng/ml

Instrument :
 ECD_P
 ClientSampleId :



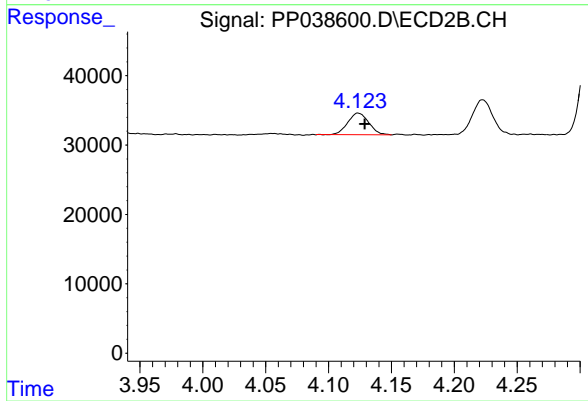
#7 AR-1016-5

R.T.: 5.604 min
 Delta R.T.: -0.003 min
 Response: 249066
 Conc: 375.52 ng/ml



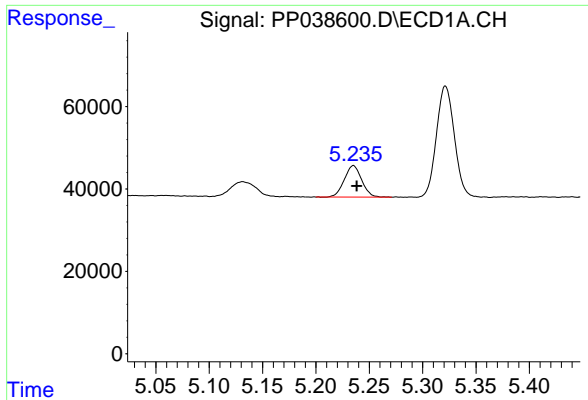
#8 AR-1221-1

R.T.: 5.132 min
 Delta R.T.: -0.008 min
 Response: 60085
 Conc: 128.48 ng/ml



#8 AR-1221-1

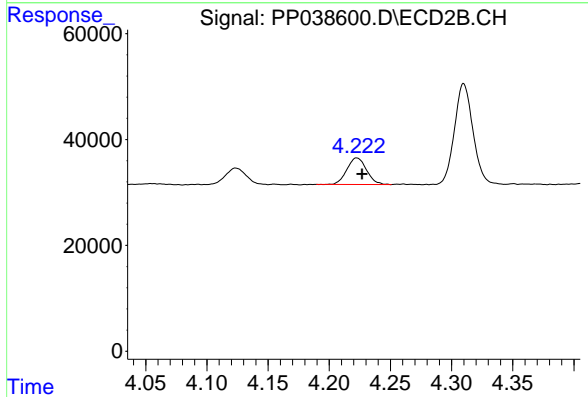
R.T.: 4.123 min
 Delta R.T.: -0.005 min
 Response: 36492
 Conc: 133.38 ng/ml



#9 AR-1221-2

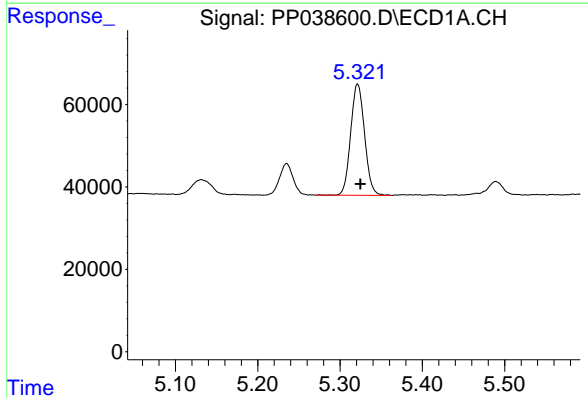
R.T.: 5.235 min
 Delta R.T.: -0.003 min
 Response: 87224
 Conc: 246.22 ng/ml

Instrument :
 ECD_P
 ClientSampleId :



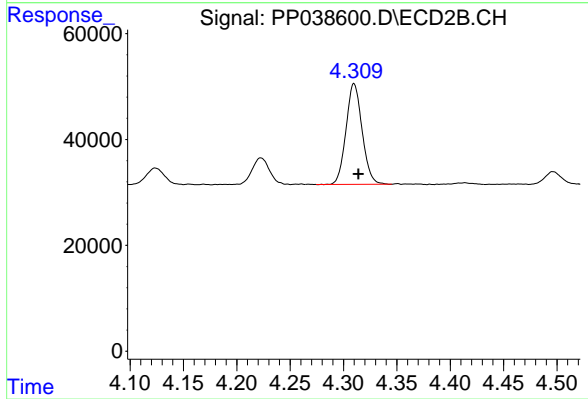
#9 AR-1221-2

R.T.: 4.222 min
 Delta R.T.: -0.004 min
 Response: 56442
 Conc: 263.84 ng/ml



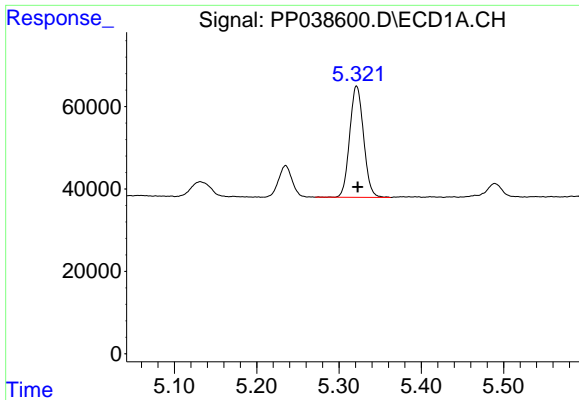
#10 AR-1221-3

R.T.: 5.321 min
 Delta R.T.: -0.003 min
 Response: 317763
 Conc: 298.37 ng/ml



#10 AR-1221-3

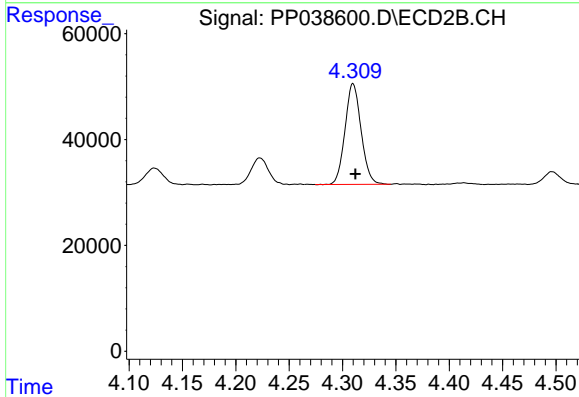
R.T.: 4.310 min
 Delta R.T.: -0.004 min
 Response: 199747
 Conc: 295.82 ng/ml



#11 AR-1232-1

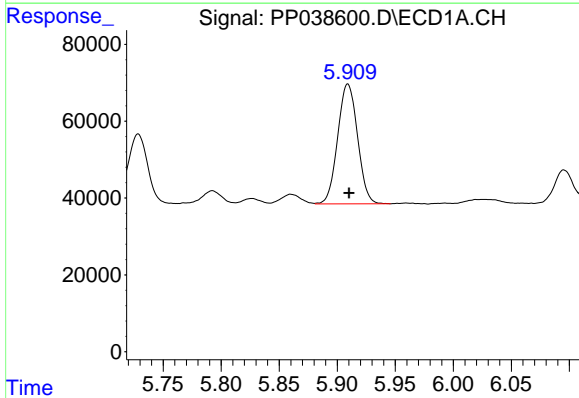
R.T.: 5.321 min
 Delta R.T.: -0.001 min
 Response: 317763
 Conc: 321.29 ng/ml

Instrument :
 ECD_P
 ClientSampleId :



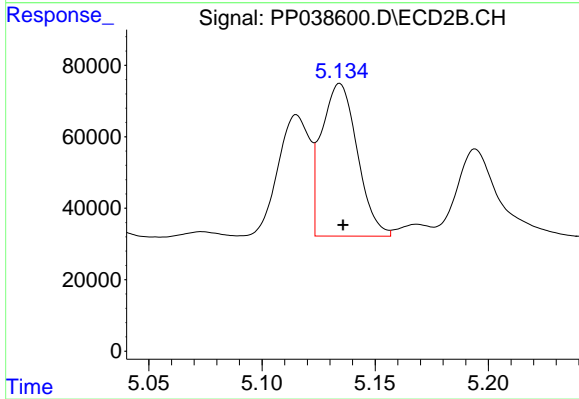
#11 AR-1232-1

R.T.: 4.310 min
 Delta R.T.: -0.002 min
 Response: 199747
 Conc: 321.59 ng/ml



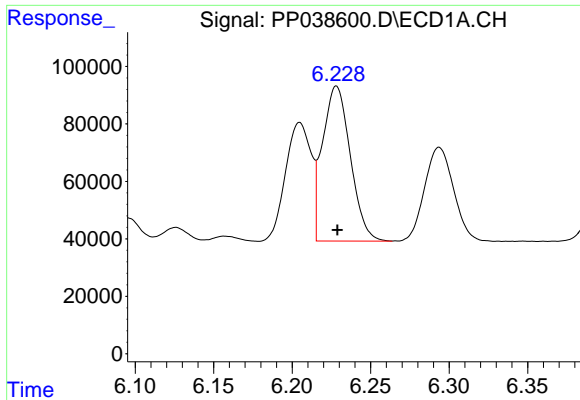
#12 AR-1232-2

R.T.: 5.909 min
 Delta R.T.: -0.001 min
 Response: 371721
 Conc: 798.28 ng/ml



#12 AR-1232-2

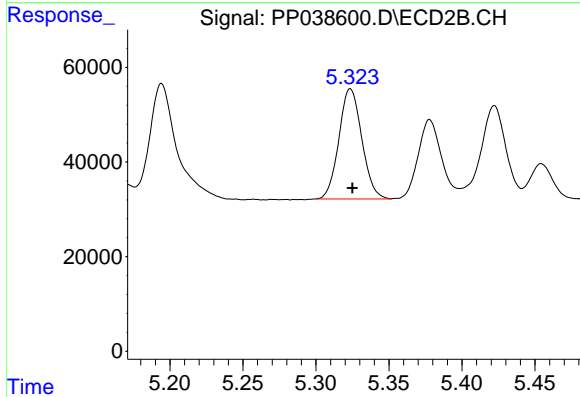
R.T.: 5.134 min
 Delta R.T.: -0.001 min
 Response: 470060
 Conc: 823.57 ng/ml



#13 AR-1232-3

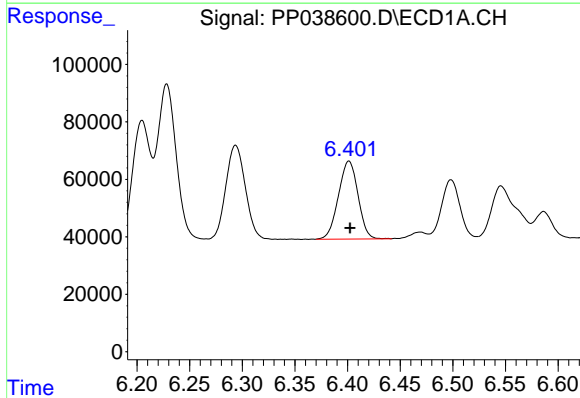
R.T.: 6.228 min
 Delta R.T.: 0.000 min
 Response: 666232
 Conc: 780.35 ng/ml

Instrument :
 ECD_P
 ClientSampleId :



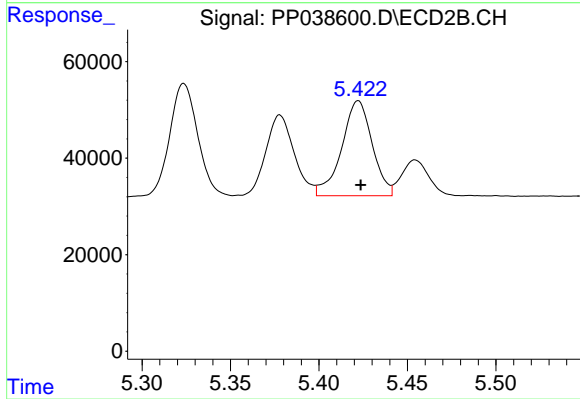
#13 AR-1232-3

R.T.: 5.324 min
 Delta R.T.: -0.001 min
 Response: 254103
 Conc: 869.27 ng/ml



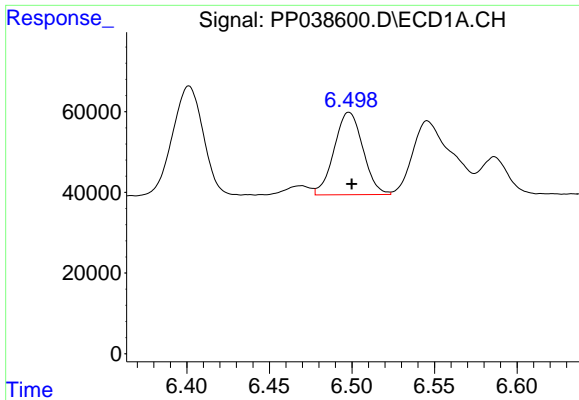
#14 AR-1232-4

R.T.: 6.401 min
 Delta R.T.: -0.001 min
 Response: 352086
 Conc: 831.55 ng/ml



#14 AR-1232-4

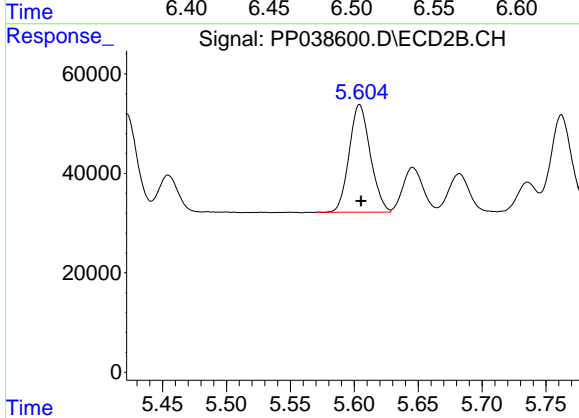
R.T.: 5.422 min
 Delta R.T.: -0.001 min
 Response: 236933
 Conc: 957.62 ng/ml



#15 AR-1232-5

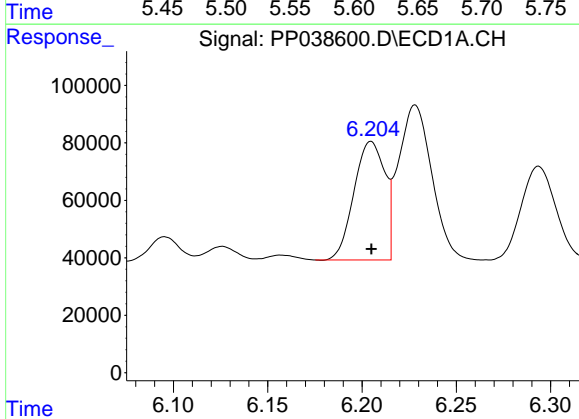
R.T.: 6.498 min
 Delta R.T.: -0.002 min
 Response: 248075
 Conc: 923.20 ng/ml

Instrument :
 ECD_P
 ClientSampleId :



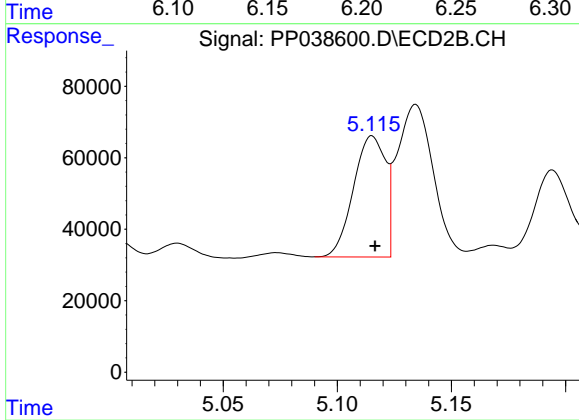
#15 AR-1232-5

R.T.: 5.604 min
 Delta R.T.: -0.001 min
 Response: 249066
 Conc: 921.21 ng/ml



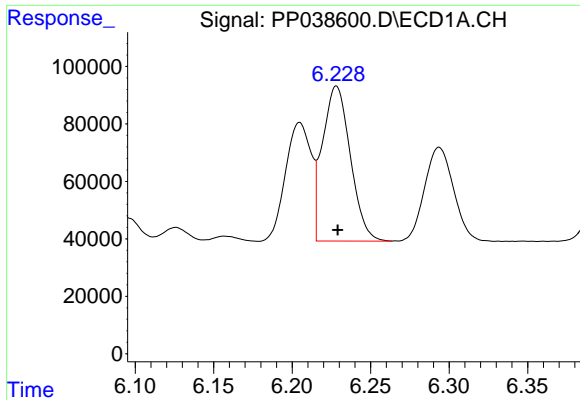
#16 AR-1242-1

R.T.: 6.205 min
 Delta R.T.: 0.000 min
 Response: 469220
 Conc: 471.07 ng/ml



#16 AR-1242-1

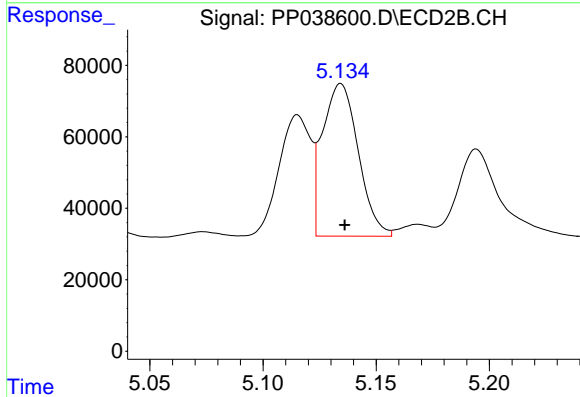
R.T.: 5.115 min
 Delta R.T.: -0.001 min
 Response: 330212
 Conc: 478.26 ng/ml



#17 AR-1242-2

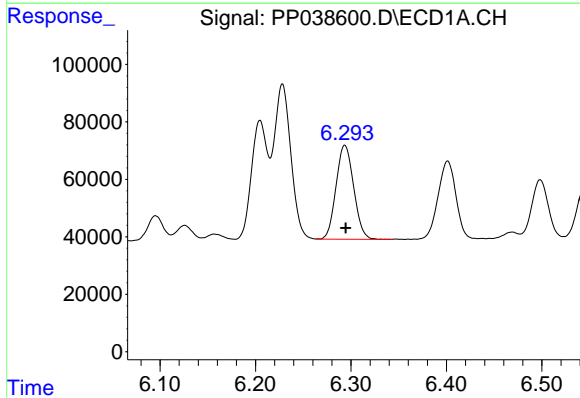
R.T.: 6.228 min
 Delta R.T.: 0.000 min
 Response: 666232
 Conc: 463.63 ng/ml

Instrument :
 ECD_P
 ClientSampled :



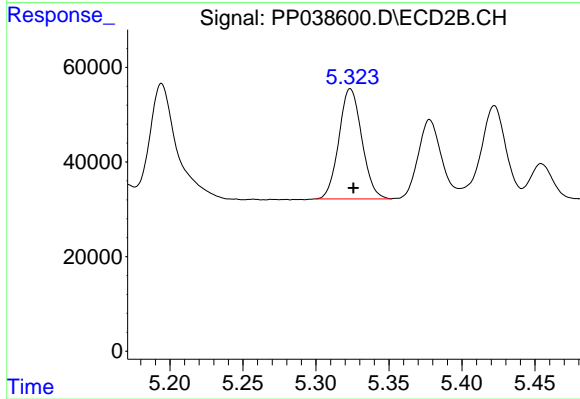
#17 AR-1242-2

R.T.: 5.134 min
 Delta R.T.: -0.002 min
 Response: 470060
 Conc: 481.53 ng/ml



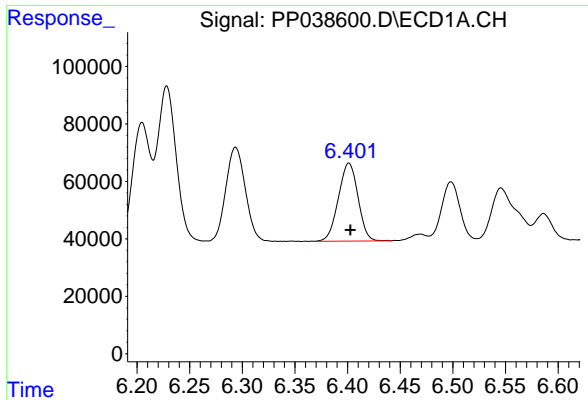
#18 AR-1242-3

R.T.: 6.294 min
 Delta R.T.: -0.001 min
 Response: 421155
 Conc: 470.43 ng/ml



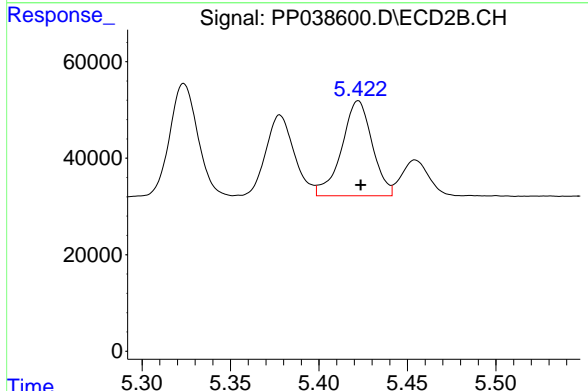
#18 AR-1242-3

R.T.: 5.324 min
 Delta R.T.: -0.002 min
 Response: 254103
 Conc: 483.22 ng/ml

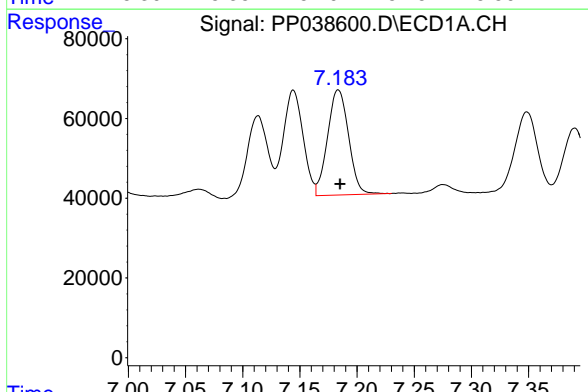


#19 AR-1242-4
 R.T.: 6.401 min
 Delta R.T.: -0.001 min
 Response: 352086
 Conc: 480.83 ng/ml

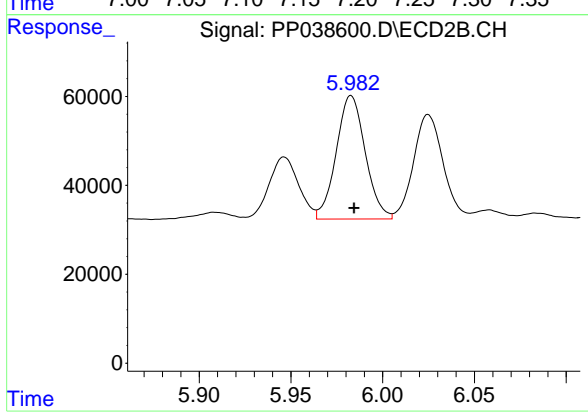
Instrument :
 ECD_P
 ClientSampleId :



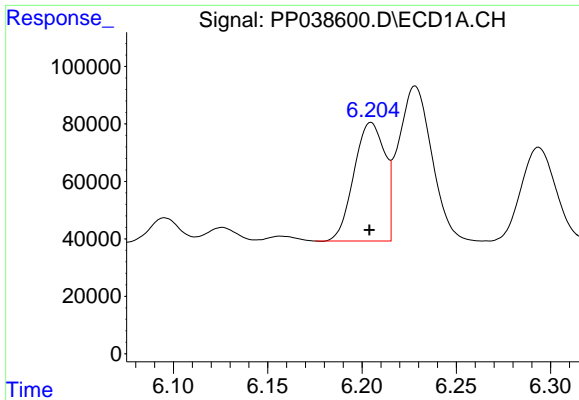
#19 AR-1242-4
 R.T.: 5.422 min
 Delta R.T.: -0.001 min
 Response: 236933
 Conc: 495.67 ng/ml



#20 AR-1242-5
 R.T.: 7.184 min
 Delta R.T.: -0.001 min
 Response: 337866
 Conc: 472.57 ng/ml



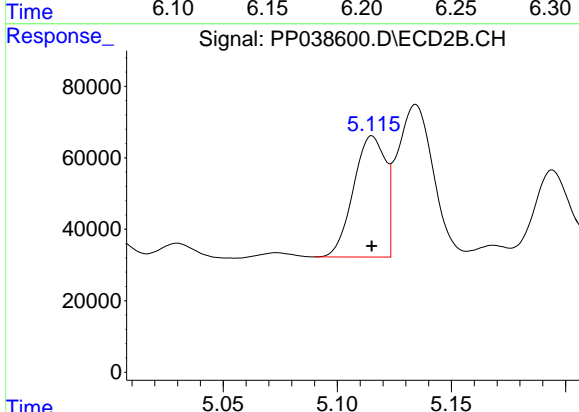
#20 AR-1242-5
 R.T.: 5.983 min
 Delta R.T.: -0.002 min
 Response: 305628
 Conc: 493.71 ng/ml



#21 AR-1248-1

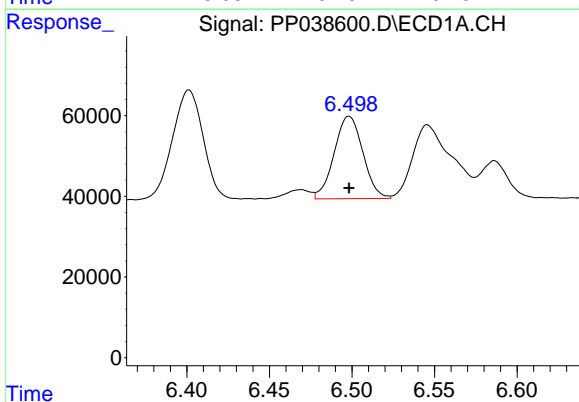
R.T.: 6.205 min
 Delta R.T.: 0.000 min
 Response: 469220
 Conc: 588.87 ng/ml

Instrument :
 ECD_P
 ClientSampleId :



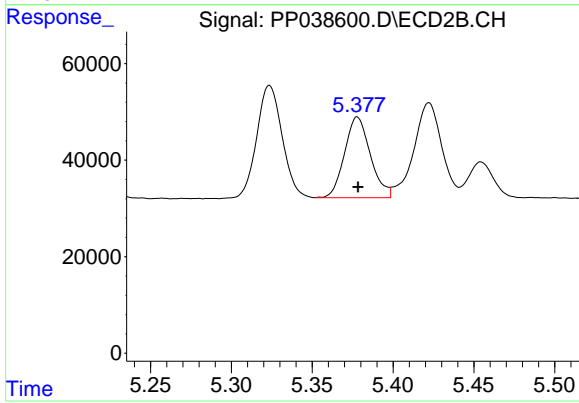
#21 AR-1248-1

R.T.: 5.115 min
 Delta R.T.: 0.000 min
 Response: 330212
 Conc: 605.99 ng/ml



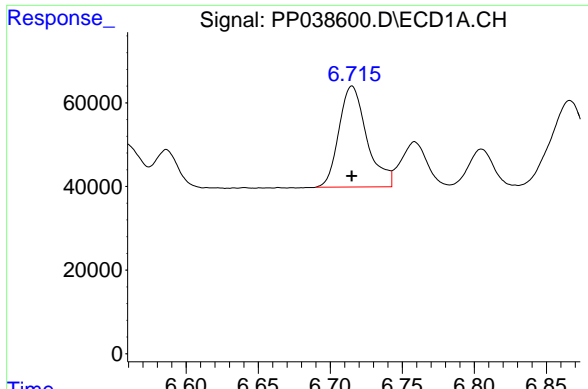
#22 AR-1248-2

R.T.: 6.498 min
 Delta R.T.: 0.000 min
 Response: 248075
 Conc: 253.02 ng/ml



#22 AR-1248-2

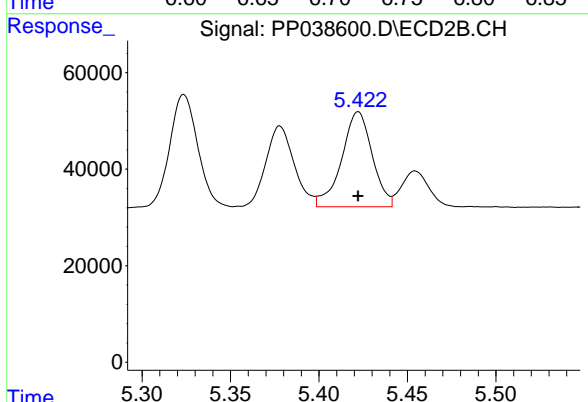
R.T.: 5.378 min
 Delta R.T.: 0.000 min
 Response: 186601
 Conc: 251.07 ng/ml



#23 AR-1248-3

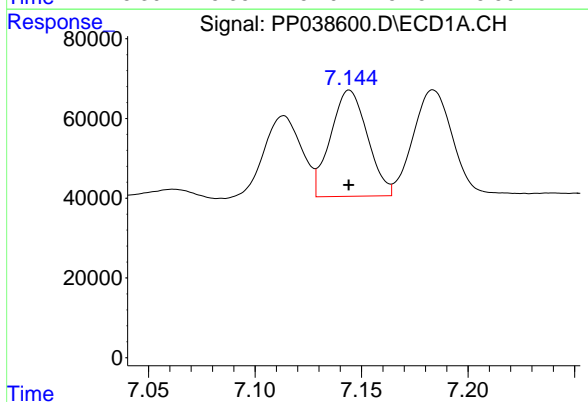
R.T.: 6.715 min
 Delta R.T.: 0.000 min
 Response: 325568
 Conc: 282.04 ng/ml

Instrument :
 ECD_P
 ClientSampleId :



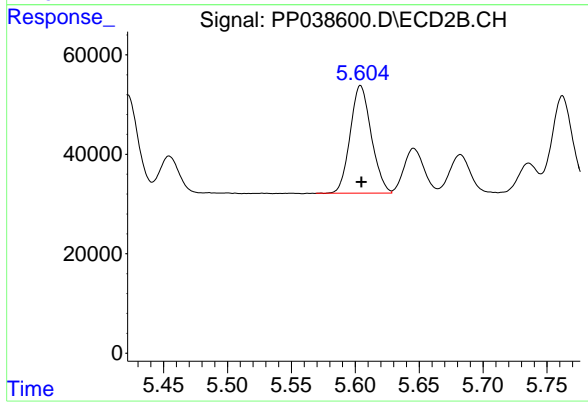
#23 AR-1248-3

R.T.: 5.422 min
 Delta R.T.: 0.000 min
 Response: 236933
 Conc: 312.02 ng/ml



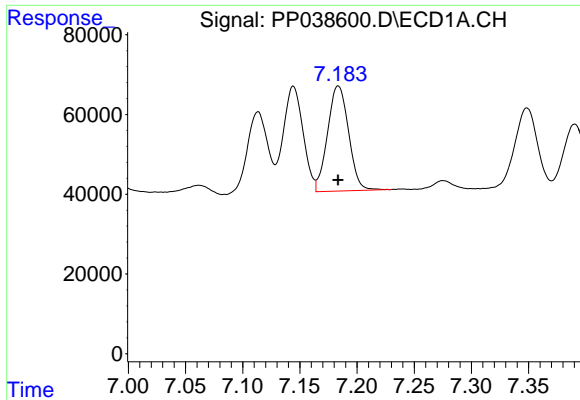
#24 AR-1248-4

R.T.: 7.144 min
 Delta R.T.: 0.000 min
 Response: 321738
 Conc: 260.55 ng/ml



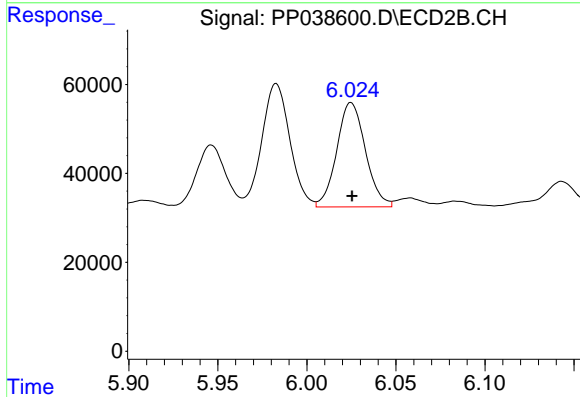
#24 AR-1248-4

R.T.: 5.604 min
 Delta R.T.: 0.000 min
 Response: 249066
 Conc: 269.27 ng/ml

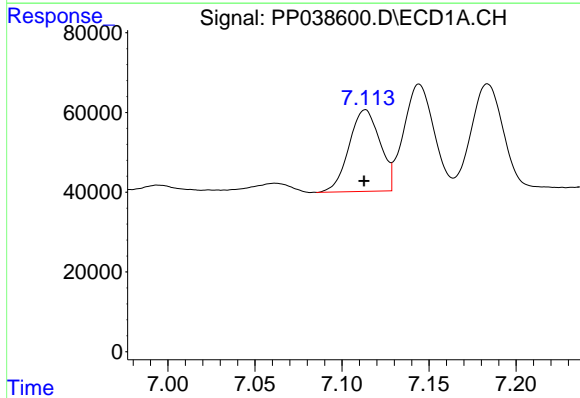


#25 AR-1248-5
 R.T.: 7.184 min
 Delta R.T.: 0.000 min
 Response: 337866
 Conc: 276.33 ng/ml

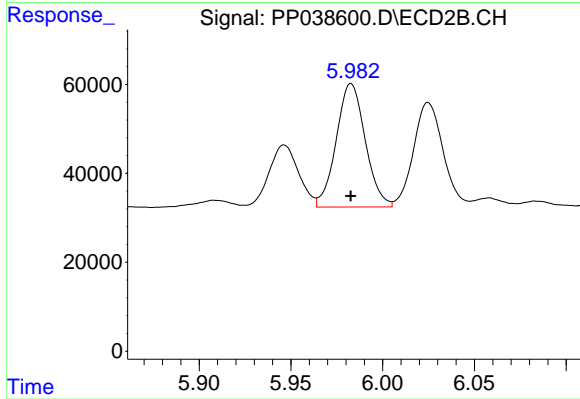
Instrument :
 ECD_P
 ClientSampleId :



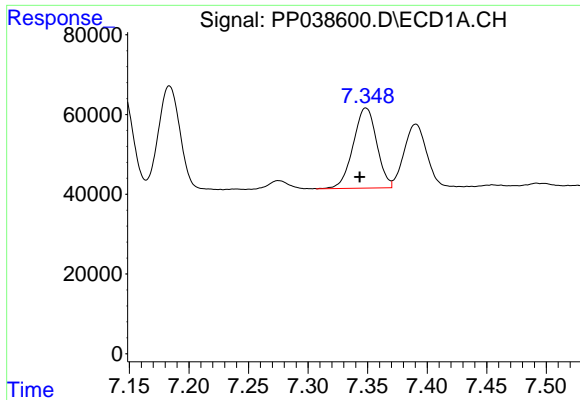
#25 AR-1248-5
 R.T.: 6.025 min
 Delta R.T.: 0.000 min
 Response: 263167
 Conc: 291.47 ng/ml



#26 AR-1254-1
 R.T.: 7.113 min
 Delta R.T.: 0.000 min
 Response: 252968
 Conc: 221.70 ng/ml

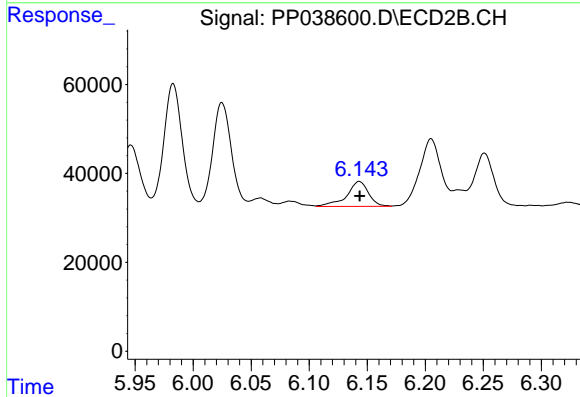


#26 AR-1254-1
 R.T.: 5.983 min
 Delta R.T.: 0.000 min
 Response: 305628
 Conc: 232.72 ng/ml

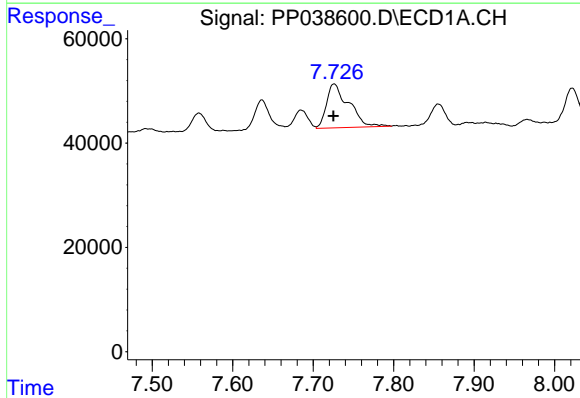


#27 AR-1254-2
 R.T.: 7.349 min
 Delta R.T.: 0.005 min
 Response: 276335
 Conc: 160.02 ng/ml

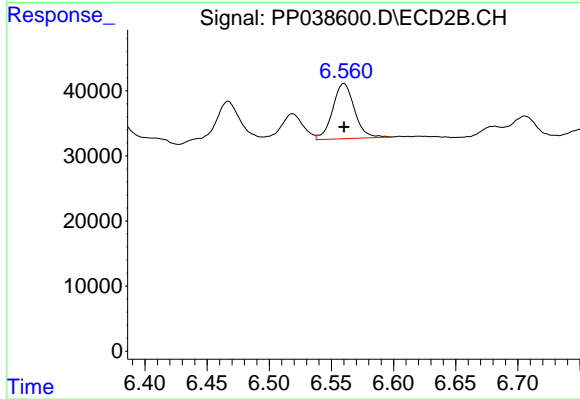
Instrument :
 ECD_P
 ClientSampleId :



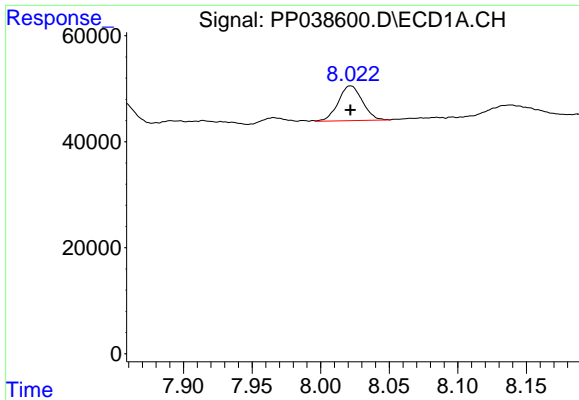
#27 AR-1254-2
 R.T.: 6.143 min
 Delta R.T.: 0.000 min
 Response: 73489
 Conc: 64.03 ng/ml



#28 AR-1254-3
 R.T.: 7.726 min
 Delta R.T.: 0.000 min
 Response: 161064
 Conc: 89.72 ng/ml

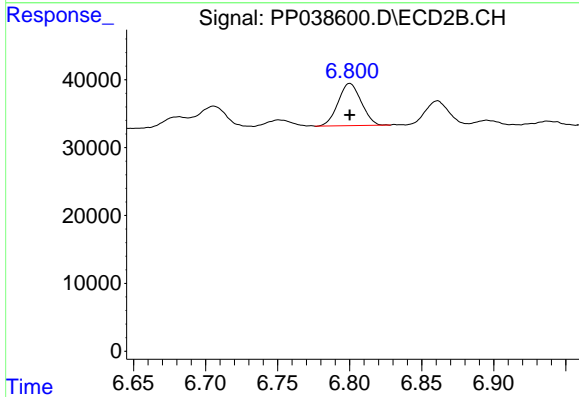


#28 AR-1254-3
 R.T.: 6.560 min
 Delta R.T.: 0.000 min
 Response: 103689
 Conc: 55.72 ng/ml

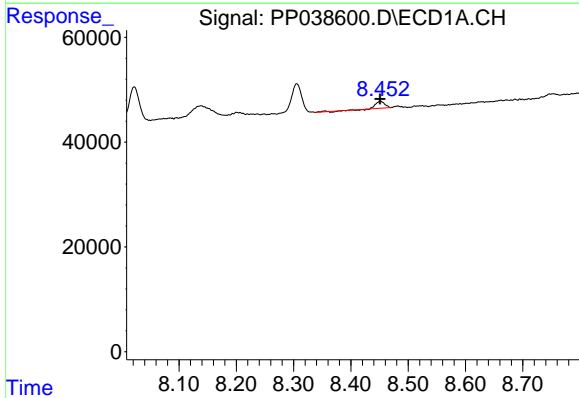


#29 AR-1254-4
 R.T.: 8.022 min
 Delta R.T.: 0.000 min
 Response: 79764
 Conc: 61.82 ng/ml

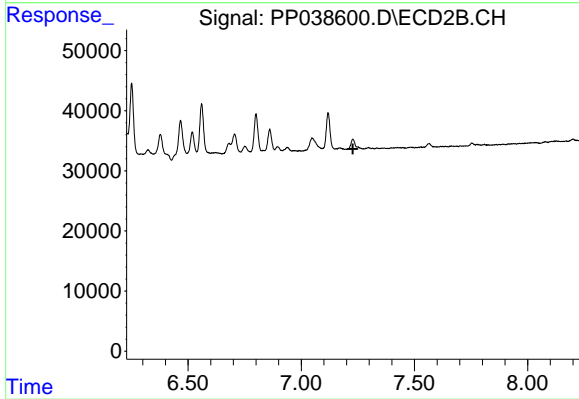
Instrument :
 ECD_P
 ClientSampleId :



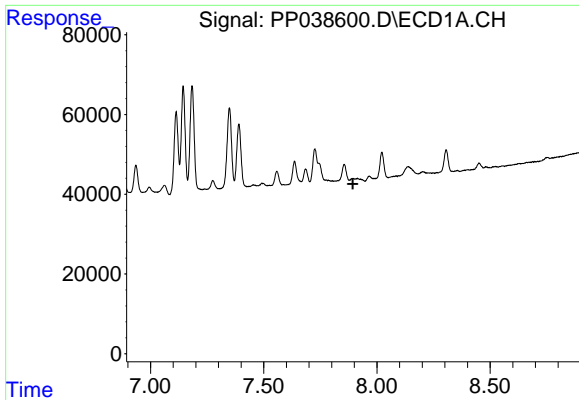
#29 AR-1254-4
 R.T.: 6.800 min
 Delta R.T.: 0.000 min
 Response: 69654
 Conc: 59.60 ng/ml



#30 AR-1254-5
 R.T.: 8.451 min
 Delta R.T.: 0.000 min
 Response: 13720
 Conc: 11.09 ng/ml



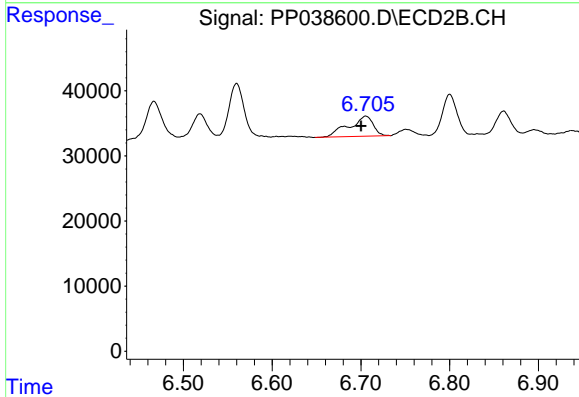
#30 AR-1254-5
 R.T.: 0.000 min
 Exp R.T. : 7.228 min
 Response: 0
 Conc: N.D.



#31 AR-1260-1

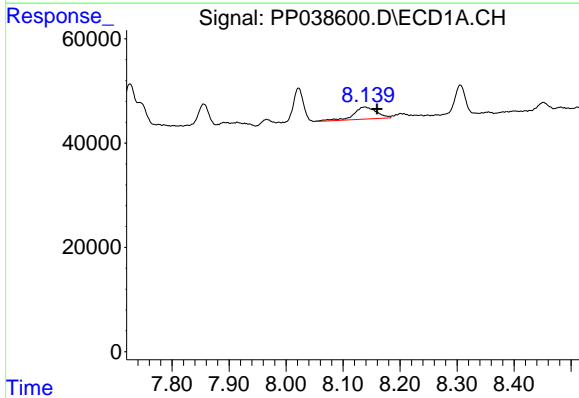
R.T.: 0.000 min
 Exp R.T.: 7.894 min
 Response: 0
 Conc: N.D.

Instrument :
 ECD_P
 ClientSampleId :



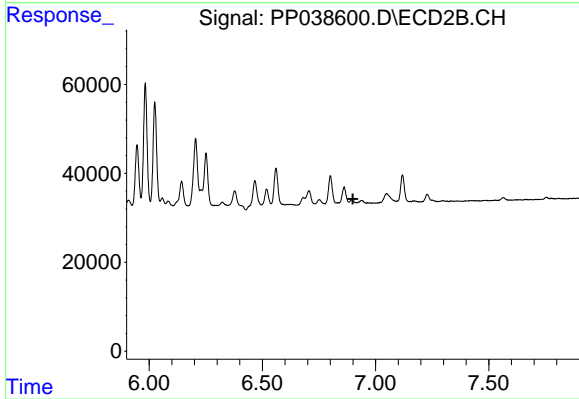
#31 AR-1260-1

R.T.: 6.706 min
 Delta R.T.: 0.005 min
 Response: 58626
 Conc: 50.10 ng/ml



#32 AR-1260-2

R.T.: 8.139 min
 Delta R.T.: -0.021 min
 Response: 64600
 Conc: 44.03 ng/ml



#32 AR-1260-2

R.T.: 0.000 min
 Exp R.T.: 6.899 min
 Response: 0
 Conc: N.D.