

Data Path : Z:\pestpcbsrv\HPCHEM1\ECD_P\Data\PP081922\
 Data File : PP050734.D
 Signal(s) : Signal #1: ECD1A.ch Signal #2: ECD2B.ch
 Acq On : 19 Aug 2022 16:18
 Operator : YP\AJ
 Sample : I.BLK
 Misc :
 ALS Vial : 2 Sample Multiplier: 1

Instrument :
 ECD_P
 ClientSampleId :
 I.BLK

Integration File signal 1: autoint1.e
 Integration File signal 2: autoint2.e
 Quant Time: Aug 20 04:04:45 2022
 Quant Method : Z:\pestpcbsrv\HPCHEM1\ECD_P\methods\PP080622.M
 Quant Title : GC EXTRACTABLES
 QLast Update : Tue Aug 09 11:38:04 2022
 Response via : Initial Calibration
 Integrator: ChemStation

Volume Inj. : 2 µl
 Signal #1 Phase : ZB-MR1 Signal #2 Phase: ZB-MR2
 Signal #1 Info : 30Mx0.32mmx 0.50µ Signal #2 Info : 30M x 0.32mm x 0.25µm

Compound	RT#1	RT#2	Resp#1	Resp#2	ng/ml	ng/ml

System Monitoring Compounds						
1) SA Tetrachlo...	4.347	3.592	31594999	59878128	19.628	19.117
2) SA Decachlor...	10.098	8.555	30511551	28255797	17.327	18.359

Target Compounds

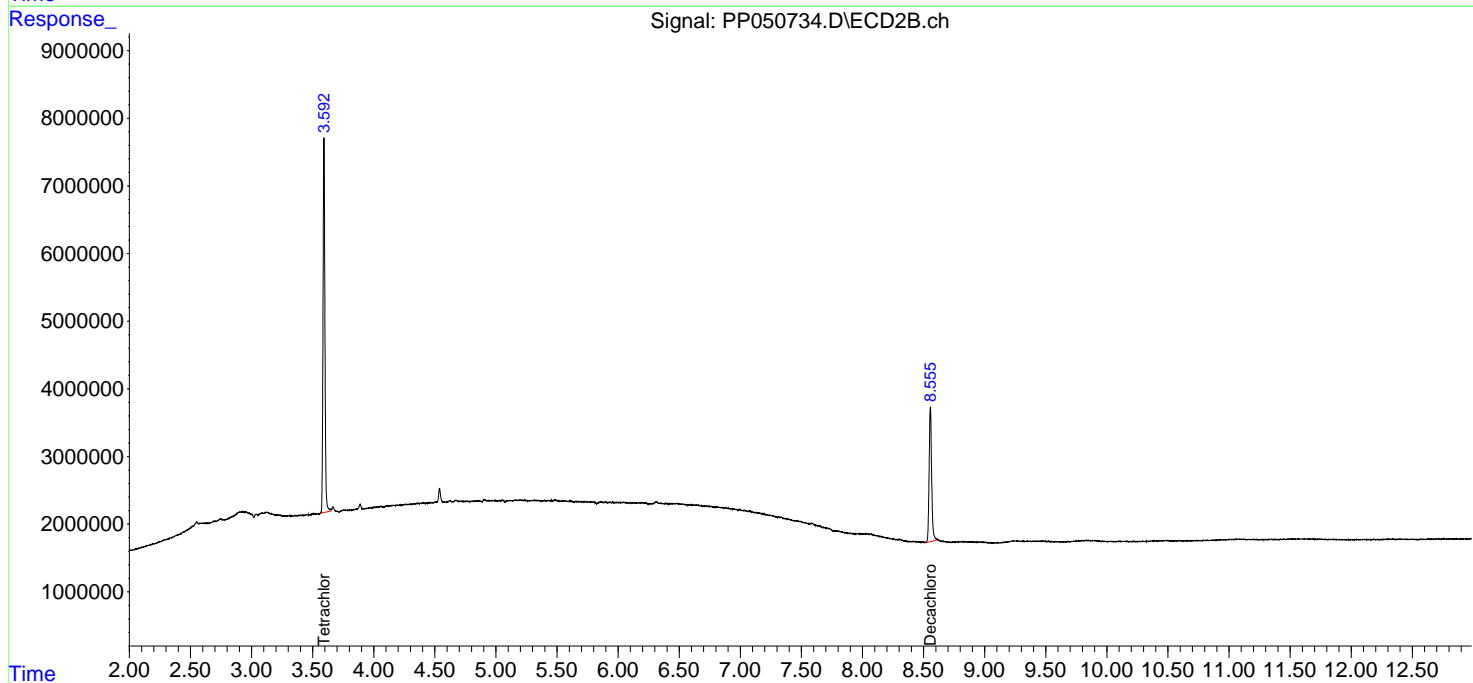
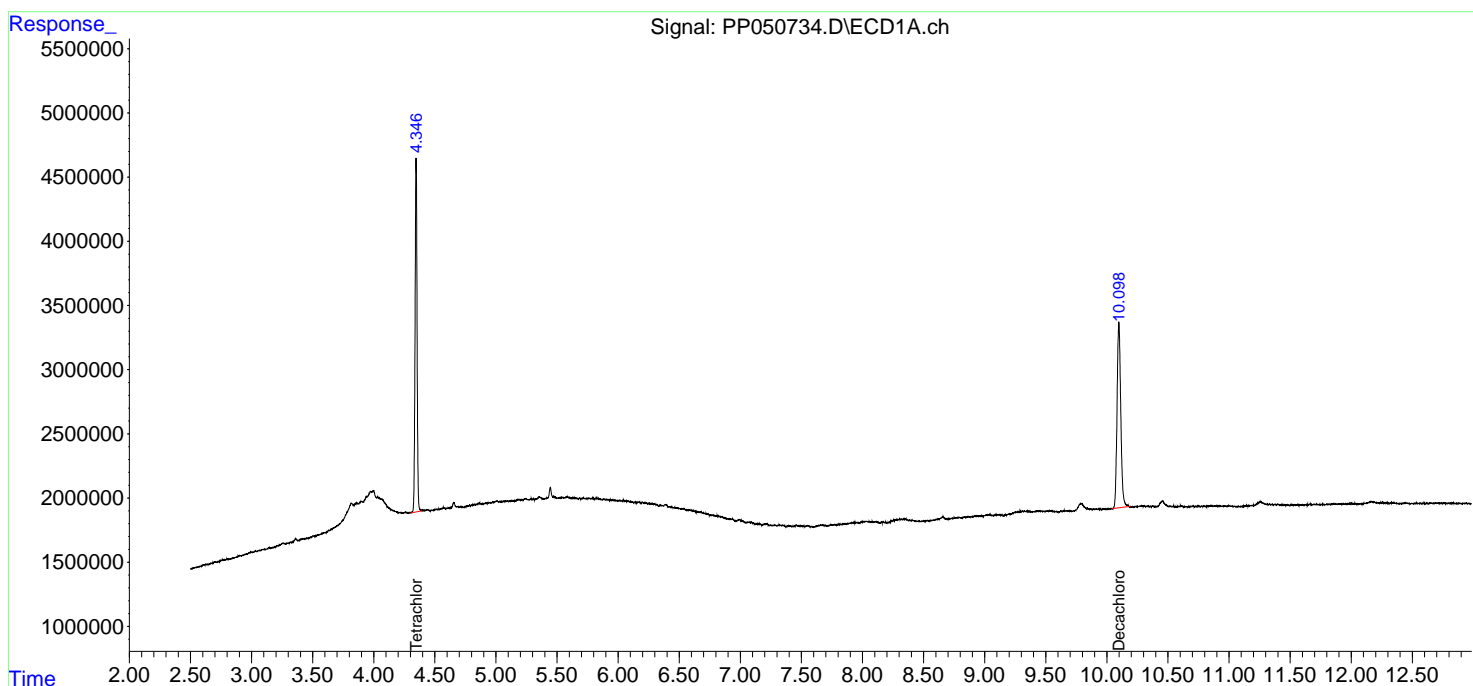
(f)=RT Delta > 1/2 Window (#)=Amounts differ by > 25% (m)=manual int.

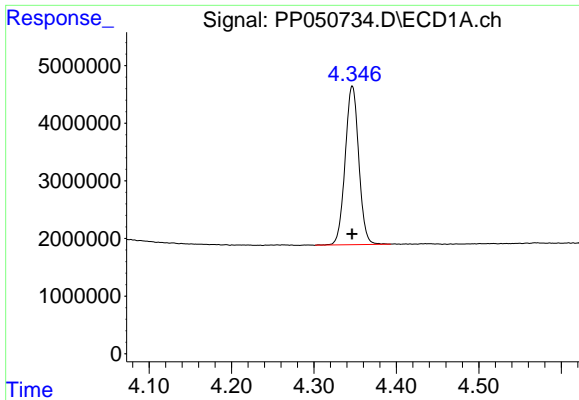
Data Path : Z:\pestpcbsrv\HPCHEM1\ECD_P\Data\PP081922\
 Data File : PP050734.D
 Signal(s) : Signal #1: ECD1A.ch Signal #2: ECD2B.ch
 Acq On : 19 Aug 2022 16:18
 Operator : YP\AJ
 Sample : I.BLK
 Misc :
 ALS Vial : 2 Sample Multiplier: 1

Instrument :
 ECD_P
 ClientSampleId :
 I.BLK

Integration File signal 1: autoint1.e
 Integration File signal 2: autoint2.e
 Quant Time: Aug 20 04:04:45 2022
 Quant Method : Z:\pestpcbsrv\HPCHEM1\ECD_P\methods\PP080622.M
 Quant Title : GC EXTRACTABLES
 QLast Update : Tue Aug 09 11:38:04 2022
 Response via : Initial Calibration
 Integrator: ChemStation

Volume Inj. : 2 µl
 Signal #1 Phase : ZB-MR1 Signal #2 Phase: ZB-MR2
 Signal #1 Info : 30Mx0.32mmx 0.50µ Signal #2 Info : 30M x 0.32mm x 0.25µm

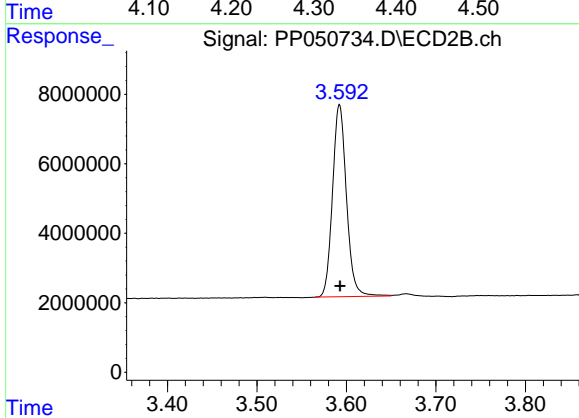




#1 Tetrachloro-m-xylene

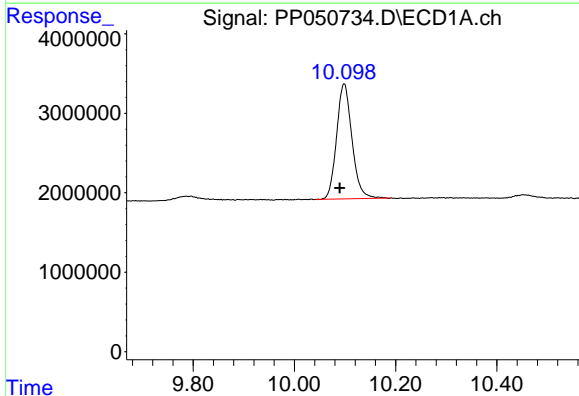
R.T.: 4.347 min
Delta R.T.: 0.000 min
Response: 31594999
Conc: 19.63 ng/ml

Instrument :
ECD_P
ClientSampleId :
I.BLK



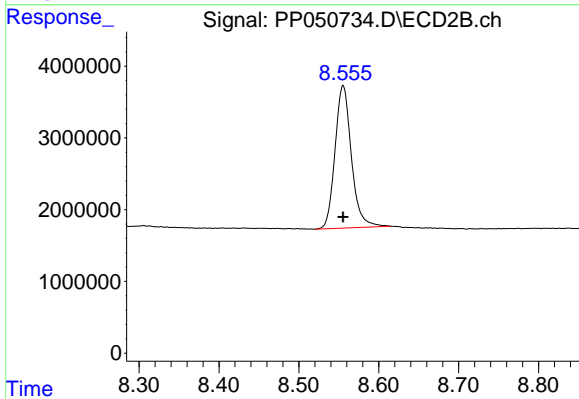
#1 Tetrachloro-m-xylene

R.T.: 3.592 min
Delta R.T.: 0.000 min
Response: 59878128
Conc: 19.12 ng/ml



#2 Decachlorobiphenyl

R.T.: 10.098 min
Delta R.T.: 0.009 min
Response: 30511551
Conc: 17.33 ng/ml



#2 Decachlorobiphenyl

R.T.: 8.555 min
Delta R.T.: 0.000 min
Response: 28255797
Conc: 18.36 ng/ml