

Data Path : Z:\pestpcbsrv\HPCHEM1\ECD_P\Data\PP081925\
 Data File : PP074494.D
 Signal(s) : Signal #1: ECD1A.ch Signal #2: ECD2B.ch
 Acq On : 19 Aug 2025 10:51
 Operator : YP\AJ
 Sample : AR1660ICC250
 Misc :
 ALS Vial : 6 Sample Multiplier: 1

Instrument :
 ECD_P
 ClientSampleId :
 AR1660ICC250

Integration File signal 1: autoint1.e
 Integration File signal 2: autoint2.e
 Quant Time: Aug 19 11:19:00 2025
 Quant Method : Z:\pestpcbsrv\HPCHEM1\ECD_P\methods\PP081925.M
 Quant Title : GC EXTRACTABLES
 QLast Update : Tue Aug 19 10:53:26 2025
 Response via : Initial Calibration
 Integrator: ChemStation

Volume Inj. : 2 µl
 Signal #1 Phase : ZB-MR1 Signal #2 Phase: ZB-MR2
 Signal #1 Info : 30Mx0.32mmx 0.50µ Signal #2 Info : 30M x 0.32mm x 0.25µm

Compound	RT#1	RT#2	Resp#1	Resp#2	ng/ml	ng/ml

System Monitoring Compounds						
1) SA Tetrachlo...	4.655	3.799	31713958	119.6E6	26.914	23.504
2) SA Decachlor...	10.434	8.814	26471241	192.3E6	27.605	25.146
Target Compounds						
3) L1 AR-1016-1	5.807	4.898	11666881	128.3E6	282.947	251.814
4) L1 AR-1016-2	5.828	4.955	17300138	62785628	280.868	257.451
5) L1 AR-1016-3	5.891	5.076	12605142	35356900	296.959	257.647
6) L1 AR-1016-4	5.988	5.117	9840543	35545917	288.345	256.557
7) L1 AR-1016-5	6.281	5.331	9117281	40835857	281.897	261.221
31) L7 AR-1260-1	7.398	6.362	15382503	95580250	284.046	253.089
32) L7 AR-1260-2	7.651	6.548	18379468	128.9E6	284.986	246.798
33) L7 AR-1260-3	8.008	6.701	14308554	103.0E6	284.156	251.347
34) L7 AR-1260-4	8.237	7.171	16912466	95646887	281.275	243.291
35) L7 AR-1260-5	8.562	7.410	29443860	251.5E6	275.751	241.347

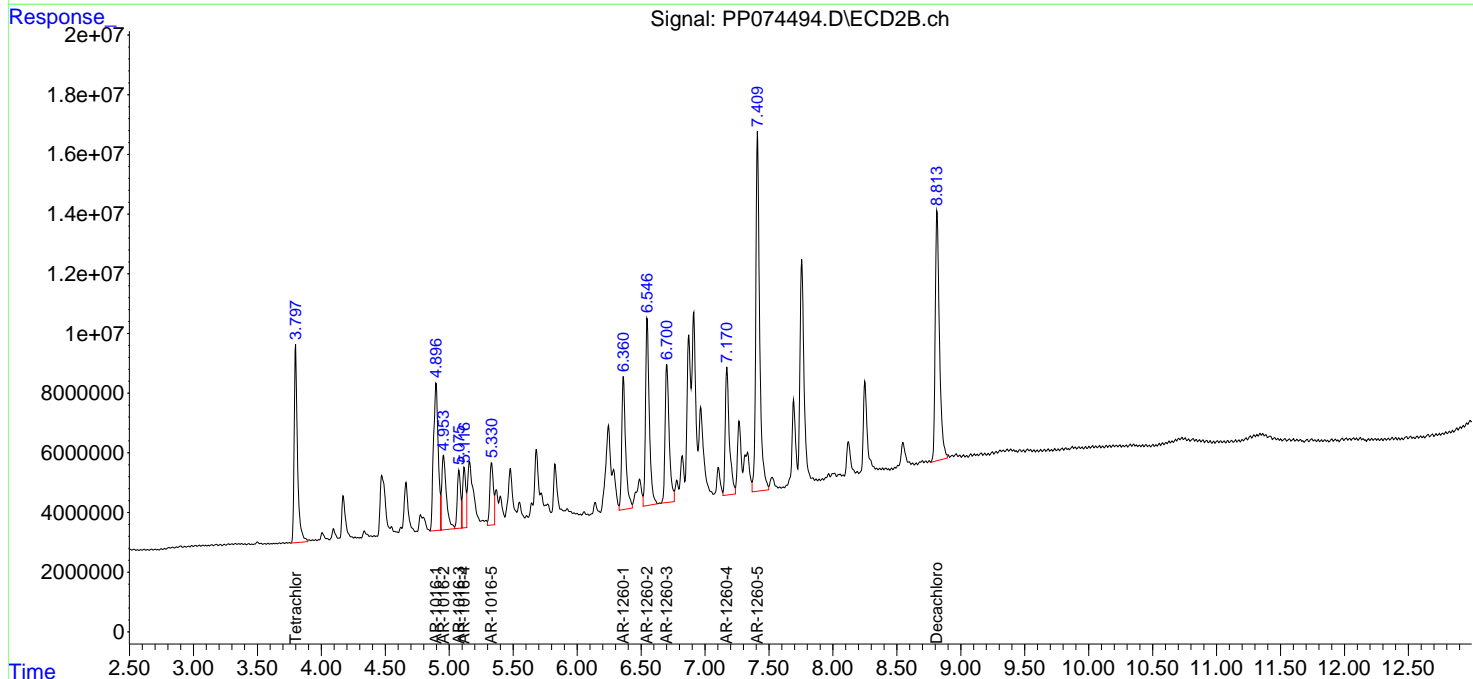
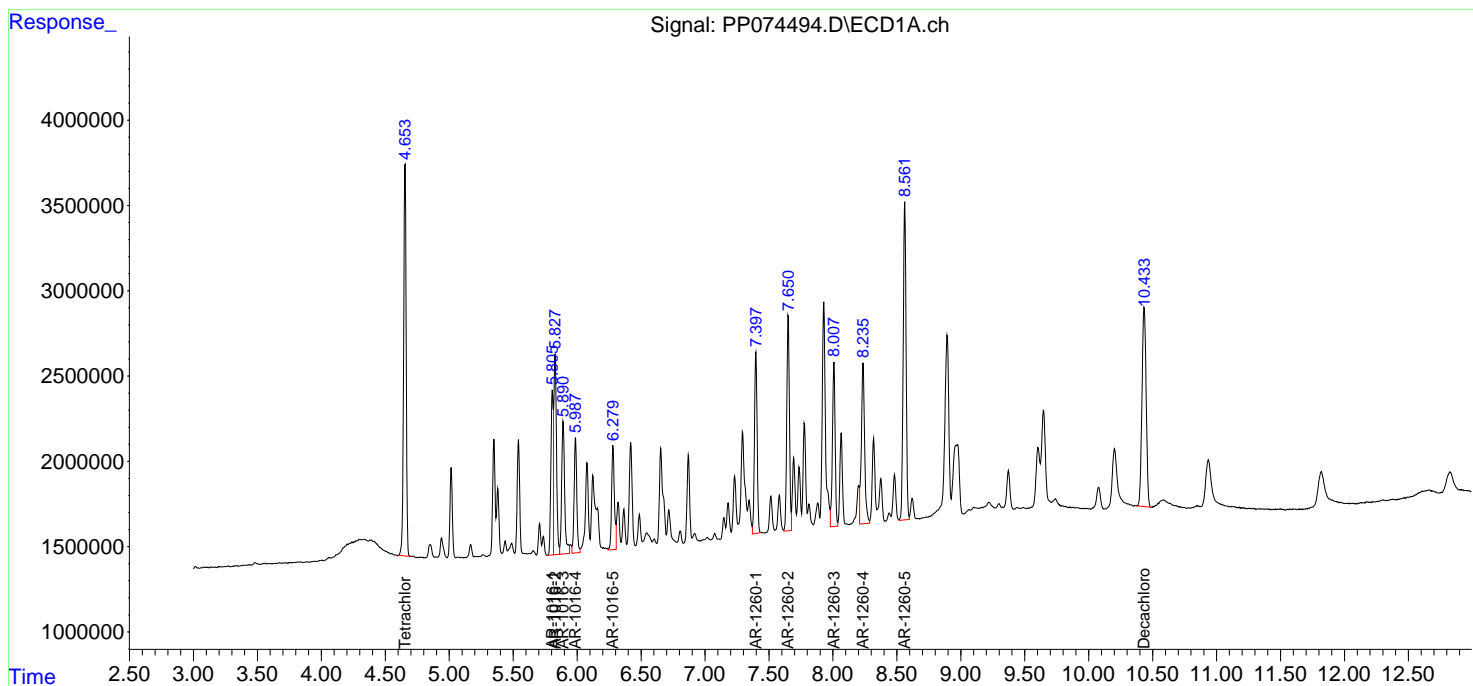
(f)=RT Delta > 1/2 Window (#)=Amounts differ by > 25% (m)=manual int.

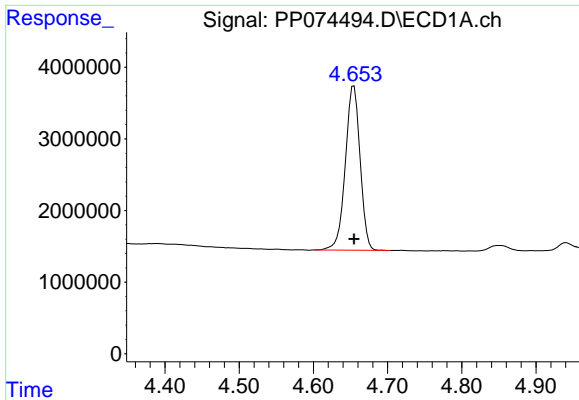
Data Path : Z:\pestpcbsrv\HPCHEM1\ECD_P\Data\PP081925\
 Data File : PP074494.D
 Signal(s) : Signal #1: ECD1A.ch Signal #2: ECD2B.ch
 Acq On : 19 Aug 2025 10:51
 Operator : YP\AJ
 Sample : AR1660ICC250
 Misc :
 ALS Vial : 6 Sample Multiplier: 1

Instrument :
 ECD_P
 ClientSampleId :
 AR1660ICC250

Integration File signal 1: autoint1.e
 Integration File signal 2: autoint2.e
 Quant Time: Aug 19 11:19:00 2025
 Quant Method : Z:\pestpcbsrv\HPCHEM1\ECD_P\methods\PP081925.M
 Quant Title : GC EXTRACTABLES
 QLast Update : Tue Aug 19 10:53:26 2025
 Response via : Initial Calibration
 Integrator: ChemStation

Volume Inj. : 2 µl
 Signal #1 Phase : ZB-MR1 Signal #2 Phase: ZB-MR2
 Signal #1 Info : 30Mx0.32mmx 0.50µ Signal #2 Info : 30M x 0.32mm x 0.25µm

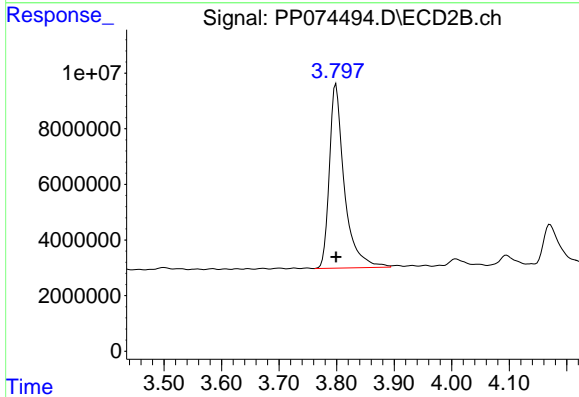




#1 Tetrachloro-m-xylene

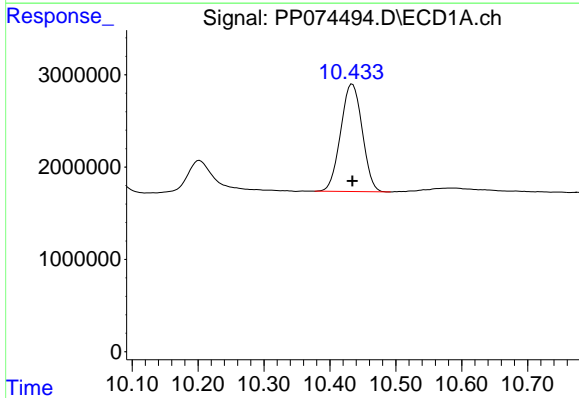
R.T.: 4.655 min
 Delta R.T.: 0.000 min
 Response: 31713958
 Conc: 26.91 ng/ml

Instrument :
 ECD_P
 ClientSampleId :
 AR1660ICC250



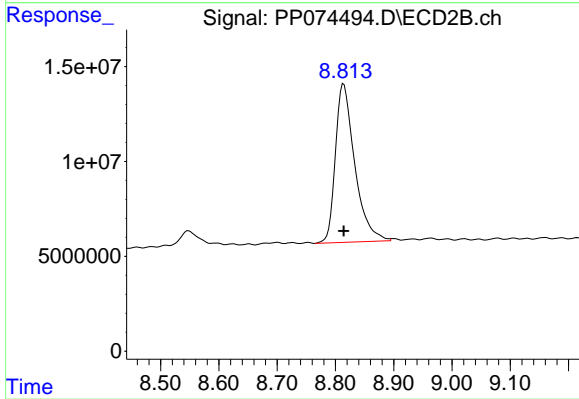
#1 Tetrachloro-m-xylene

R.T.: 3.799 min
 Delta R.T.: 0.000 min
 Response: 119591862
 Conc: 23.50 ng/ml



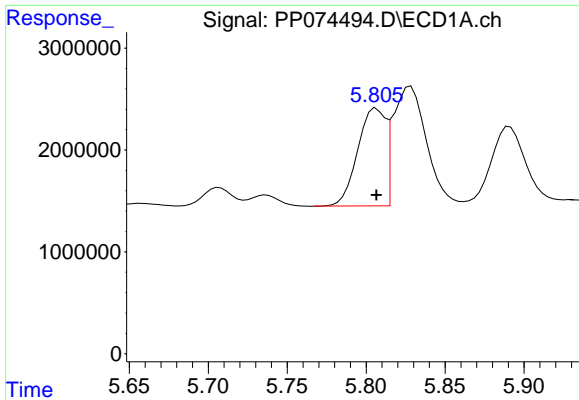
#2 Decachlorobiphenyl

R.T.: 10.434 min
 Delta R.T.: 0.000 min
 Response: 26471241
 Conc: 27.61 ng/ml



#2 Decachlorobiphenyl

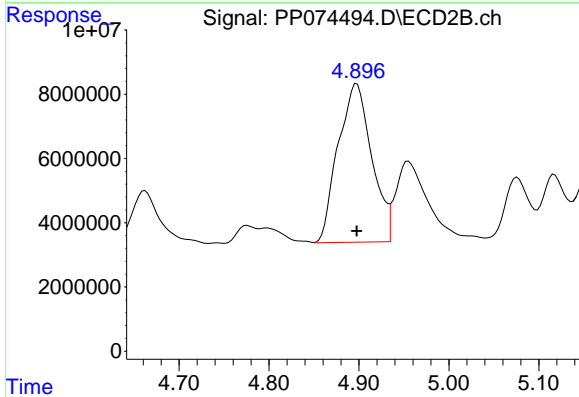
R.T.: 8.814 min
 Delta R.T.: 0.000 min
 Response: 192252050
 Conc: 25.15 ng/ml



#3 AR-1016-1

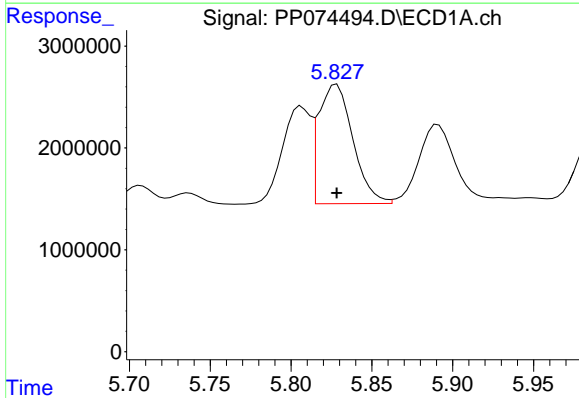
R.T.: 5.807 min
 Delta R.T.: 0.000 min
 Response: 11666881
 Conc: 282.95 ng/ml

Instrument :
 ECD_P
 ClientSampleId :
 AR1660ICC250



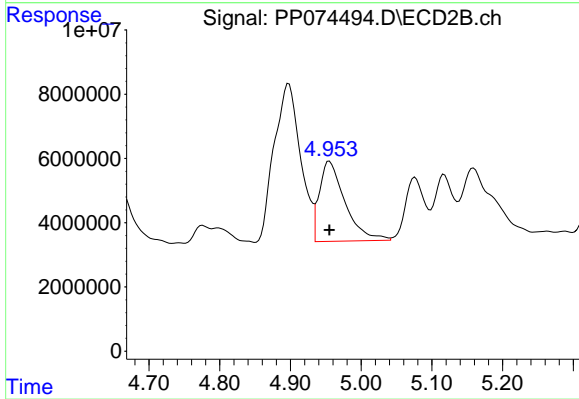
#3 AR-1016-1

R.T.: 4.898 min
 Delta R.T.: 0.000 min
 Response: 128250724
 Conc: 251.81 ng/ml



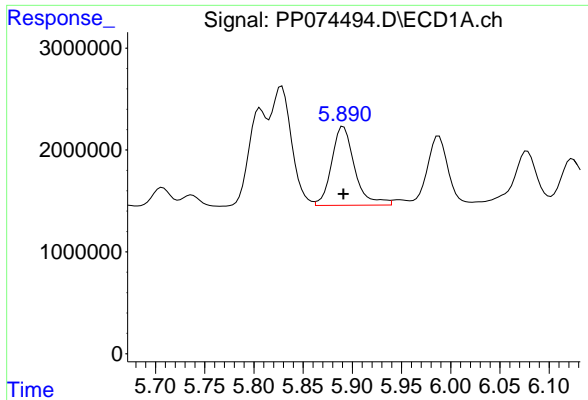
#4 AR-1016-2

R.T.: 5.828 min
 Delta R.T.: 0.000 min
 Response: 17300138
 Conc: 280.87 ng/ml



#4 AR-1016-2

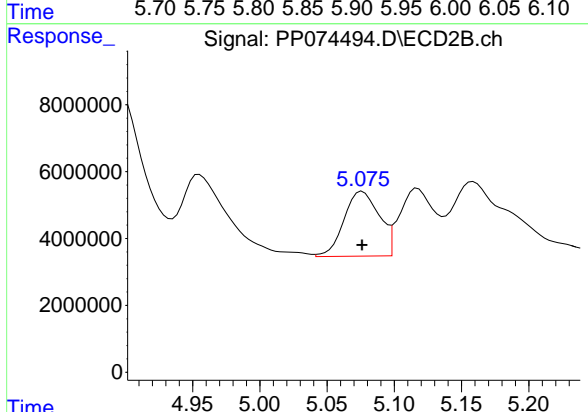
R.T.: 4.955 min
 Delta R.T.: 0.000 min
 Response: 62785628
 Conc: 257.45 ng/ml



#5 AR-1016-3

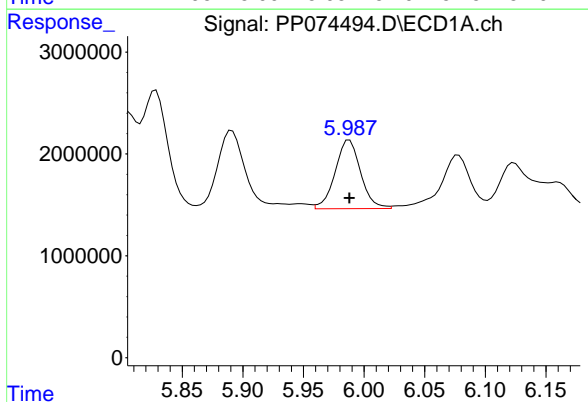
R.T.: 5.891 min
 Delta R.T.: 0.000 min
 Response: 12605142
 Conc: 296.96 ng/ml

Instrument :
 ECD_P
 ClientSampleId :
 AR1660ICC250



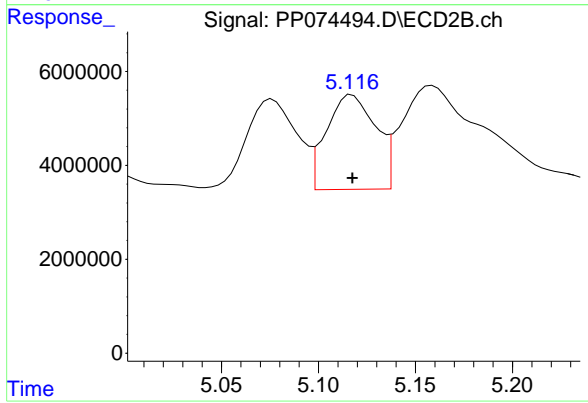
#5 AR-1016-3

R.T.: 5.076 min
 Delta R.T.: 0.000 min
 Response: 35356900
 Conc: 257.65 ng/ml



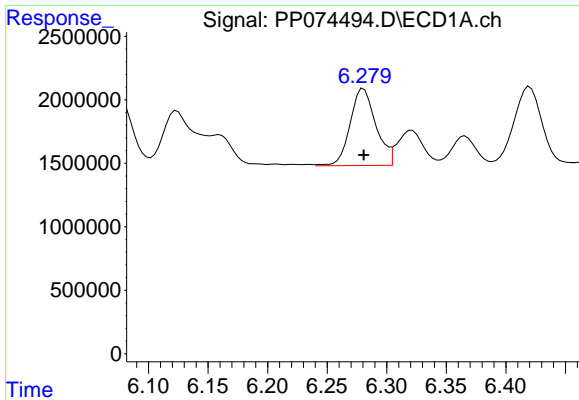
#6 AR-1016-4

R.T.: 5.988 min
 Delta R.T.: 0.000 min
 Response: 9840543
 Conc: 288.35 ng/ml



#6 AR-1016-4

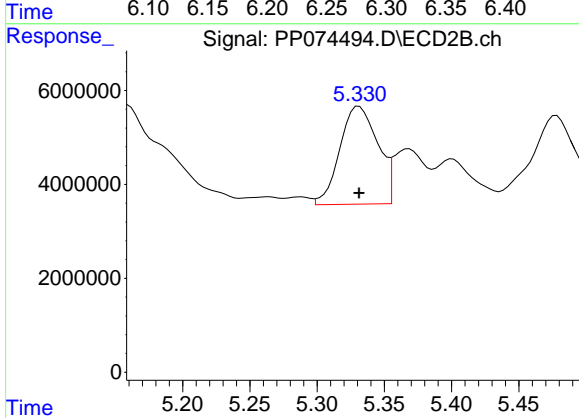
R.T.: 5.117 min
 Delta R.T.: 0.000 min
 Response: 35545917
 Conc: 256.56 ng/ml



#7 AR-1016-5

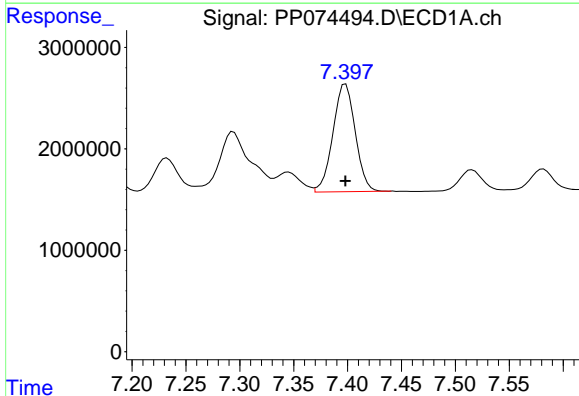
R.T.: 6.281 min
 Delta R.T.: 0.000 min
 Response: 9117281
 Conc: 281.90 ng/ml

Instrument :
 ECD_P
 ClientSampleId :
 AR1660ICC250



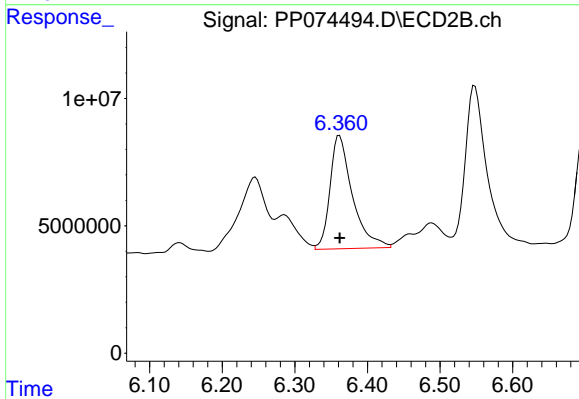
#7 AR-1016-5

R.T.: 5.331 min
 Delta R.T.: 0.000 min
 Response: 40835857
 Conc: 261.22 ng/ml



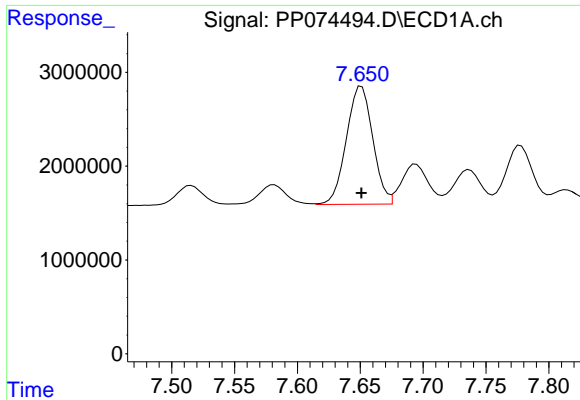
#31 AR-1260-1

R.T.: 7.398 min
 Delta R.T.: 0.000 min
 Response: 15382503
 Conc: 284.05 ng/ml



#31 AR-1260-1

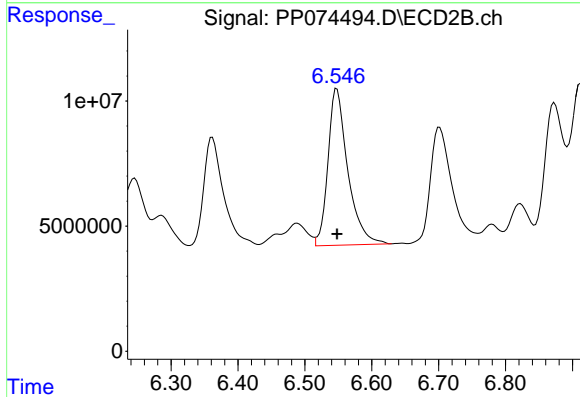
R.T.: 6.362 min
 Delta R.T.: 0.000 min
 Response: 95580250
 Conc: 253.09 ng/ml



#32 AR-1260-2

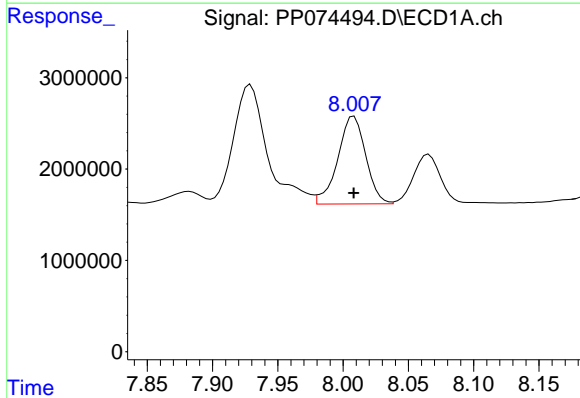
R.T.: 7.651 min
 Delta R.T.: 0.000 min
 Response: 18379468
 Conc: 284.99 ng/ml

Instrument :
 ECD_P
 ClientSampleId :
 AR1660ICC250



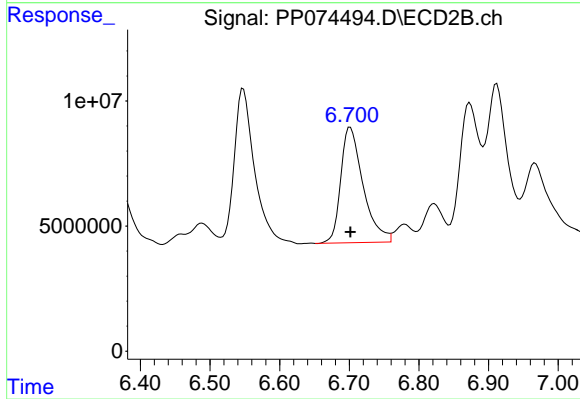
#32 AR-1260-2

R.T.: 6.548 min
 Delta R.T.: 0.000 min
 Response: 128904395
 Conc: 246.80 ng/ml



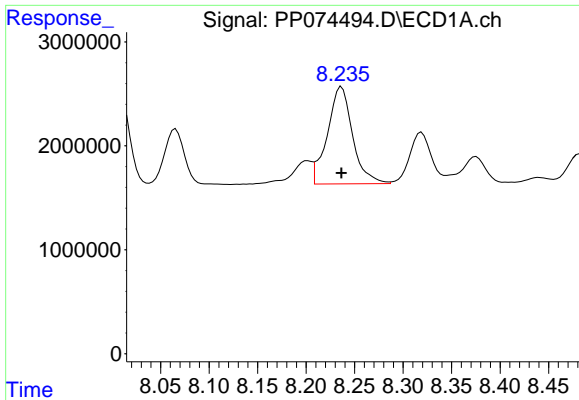
#33 AR-1260-3

R.T.: 8.008 min
 Delta R.T.: 0.000 min
 Response: 14308554
 Conc: 284.16 ng/ml



#33 AR-1260-3

R.T.: 6.701 min
 Delta R.T.: 0.000 min
 Response: 102991410
 Conc: 251.35 ng/ml

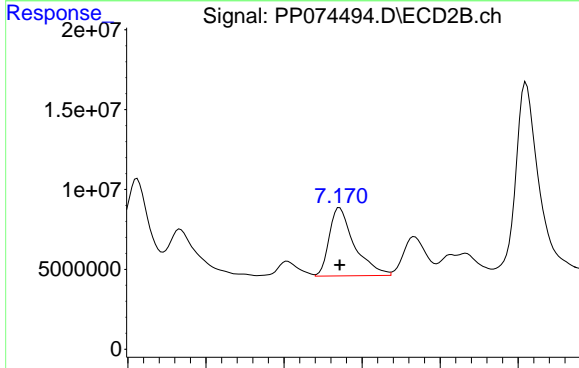


#34 AR-1260-4

R.T.: 8.237 min
 Delta R.T.: 0.000 min
 Response: 16912466
 Conc: 281.27 ng/ml

Instrument :
 ECD_P
 ClientSampleId :
 AR1660ICC250

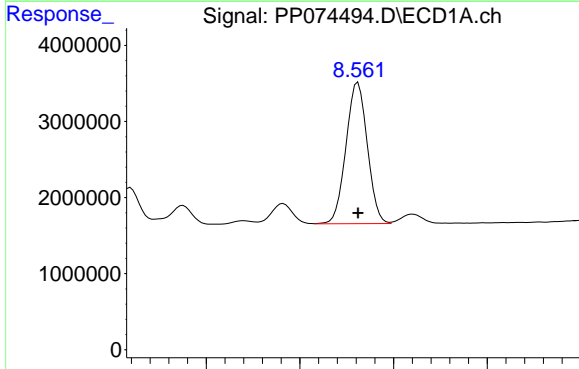
Time 8.05 8.10 8.15 8.20 8.25 8.30 8.35 8.40 8.45



#34 AR-1260-4

R.T.: 7.171 min
 Delta R.T.: 0.000 min
 Response: 95646887
 Conc: 243.29 ng/ml

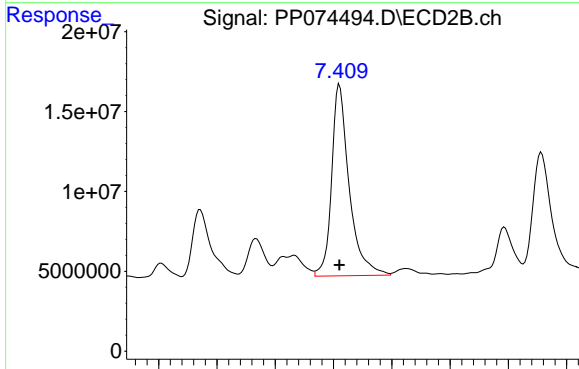
Time 6.90 7.00 7.10 7.20 7.30 7.40



#35 AR-1260-5

R.T.: 8.562 min
 Delta R.T.: 0.000 min
 Response: 29443860
 Conc: 275.75 ng/ml

Time 8.40 8.50 8.60 8.70



#35 AR-1260-5

R.T.: 7.410 min
 Delta R.T.: 0.000 min
 Response: 251478559
 Conc: 241.35 ng/ml

Time 7.10 7.20 7.30 7.40 7.50 7.60 7.70