

Data Path : Z:\pestpcbsrv\HPCHEM1\ECD\_P\Data\PP081925\  
 Data File : PP074519.D  
 Signal(s) : Signal #1: ECD1A.ch Signal #2: ECD2B.ch  
 Acq On : 19 Aug 2025 17:52  
 Operator : YP\AJ  
 Sample : PP081925ICV500  
 Misc :  
 ALS Vial : 31 Sample Multiplier: 1

Instrument :  
 ECD\_P  
 ClientSampleId :  
 ICVPP081925

Integration File signal 1: autoint1.e  
 Integration File signal 2: autoint2.e  
 Quant Time: Aug 20 06:23:09 2025  
 Quant Method : Z:\pestpcbsrv\HPCHEM1\ECD\_P\methods\PP081925.M  
 Quant Title : GC EXTRACTABLES  
 QLast Update : Wed Aug 20 06:20:44 2025  
 Response via : Initial Calibration  
 Integrator: ChemStation

Volume Inj. : 2 µl  
 Signal #1 Phase : ZB-MR1 Signal #2 Phase: ZB-MR2  
 Signal #1 Info : 30Mx0.32mmx 0.50µ Signal #2 Info : 30M x 0.32mm x 0.25µm

Compound	RT#1	RT#2	Resp#1	Resp#2	ng/ml	ng/ml
System Monitoring Compounds						
1) SA Tetrachlo...	4.658	3.802	56842653	228.5E6	46.452	47.259
2) SA Decachlor...	10.435	8.817	50219148	360.9E6	50.854	48.127
Target Compounds						
3) L1 AR-1016-1	5.809	4.901	20384085	238.3E6	462.341	467.803
4) L1 AR-1016-2	5.830	4.960	30649421	113.5E6	487.725	476.718
5) L1 AR-1016-3	5.893	5.079	20869297	64619014	464.651	468.581
6) L1 AR-1016-4	5.990	5.121	17006846	64496987	483.399	461.341
7) L1 AR-1016-5	6.283	5.335	16393488	71417891	493.987	430.012
8) L2 AR-1221-1	4.853	4.011	2488800	7513616	141.467	121.447
9) L2 AR-1221-2	4.944	4.100	3745274	9988222	280.394	220.919
10) L2 AR-1221-3	5.018	4.176	12308513	46584888	324.654	283.546
11) L3 AR-1232-1	5.018	4.176	12308513	46584888	405.233	363.673
12) L3 AR-1232-2	5.544	4.901	15642129	238.3E6	992.633	1027.972
13) L3 AR-1232-3	5.830	5.079	30649421	64619014	1003.462	1075.912
14) L3 AR-1232-4	5.990	5.163	17006846	119.0E6	984.804	1614.358 #
15) L3 AR-1232-5	6.080	5.335	14860374	71417891	1144.783	1150.347
16) L4 AR-1242-1	5.809	4.901	20384085	238.3E6	532.566	564.969
17) L4 AR-1242-2	5.830	4.960	30649421	113.5E6	542.641	566.530
18) L4 AR-1242-3	5.893	5.079	20869297	64619014	513.985	546.238
19) L4 AR-1242-4	5.990	5.163	17006846	119.0E6	535.786	695.200 #
20) L4 AR-1242-5	6.720	5.684	6226963	88051530	172.633	475.532 #
21) L5 AR-1248-1	5.809	4.901	20384085	238.3E6	674.433	862.876 #
22) L5 AR-1248-2	6.080	5.121	14860374	64496987	344.820	364.894
23) L5 AR-1248-3	6.283	5.163	16393488	119.0E6	351.011	523.716 #
24) L5 AR-1248-4	6.656	5.335	21114278	71417891	383.890	327.573
25) L5 AR-1248-5	6.720	5.719	6226963	27418665	112.257	74.645 #
26) L6 AR-1254-1	6.656	5.684	21114278	88051530	362.356	184.707 #
27) L6 AR-1254-2	6.873	5.832	13484083	64419060	165.214	182.940
28) L6 AR-1254-3	7.235	6.249	8562843	139.6E6	95.989	225.197 #
29) L6 AR-1254-4	7.517	6.459	5690163	13765496	86.328	29.374 #
30) L6 AR-1254-5	7.932	6.876	43681313	193.0E6	525.742	393.436 #
31) L7 AR-1260-1	7.400	6.365	27587306	174.2E6	477.210	464.246
32) L7 AR-1260-2	7.652	6.551	32691813	240.4E6	474.362	454.622
33) L7 AR-1260-3	8.011	6.705	26067073	184.7E6	502.398	426.529
34) L7 AR-1260-4	8.239	7.174	30945462	184.5E6	485.094	483.638
35) L7 AR-1260-5	8.564	7.414	54844125	472.4E6	483.583	470.272
36) L8 AR-1262-1	8.239	6.915	30945462	249.1E6	401.806	352.224
37) L8 AR-1262-2	8.564	7.174	54844125	184.5E6	414.291	354.312
38) L8 AR-1262-3	8.896	7.697	38355675	102.5E6	394.556	219.747 #
39) L8 AR-1262-4	8.968	7.760	25452738	321.7E6	337.882	391.448
40) L8 AR-1262-5	9.649	8.254	21854970	114.9E6	358.536	320.761
41) L9 AR-1268-1	8.896	7.697	38355675	102.5E6	236.706	72.647 #

Data Path : Z:\pestpcbsrv\HPCHEM1\ECD\_P\Data\PP081925\  
 Data File : PP074519.D  
 Signal(s) : Signal #1: ECD1A.ch Signal #2: ECD2B.ch  
 Acq On : 19 Aug 2025 17:52  
 Operator : YP\AJ  
 Sample : PP081925ICV500  
 Misc :  
 ALS Vial : 31 Sample Multiplier: 1

**Instrument :**  
 ECD\_P  
**ClientSampleId :**  
 ICVPP081925

Integration File signal 1: autoint1.e  
 Integration File signal 2: autoint2.e  
 Quant Time: Aug 20 06:23:09 2025  
 Quant Method : Z:\pestpcbsrv\HPCHEM1\ECD\_P\methods\PP081925.M  
 Quant Title : GC EXTRACTABLES  
 QLast Update : Wed Aug 20 06:20:44 2025  
 Response via : Initial Calibration  
 Integrator: ChemStation

Volume Inj. : 2 µl  
 Signal #1 Phase : ZB-MR1 Signal #2 Phase: ZB-MR2  
 Signal #1 Info : 30Mx0.32mmx 0.50µ Signal #2 Info : 30M x 0.32mm x 0.25µm

	Compound	RT#1	RT#2	Resp#1	Resp#2	ng/ml	ng/ml
42)	L9 AR-1268-2	8.968	7.760	25452738	321.7E6	173.458	235.961 #
43)	L9 AR-1268-3	9.222	7.967	1051531	5291372	8.509	5.072 #
44)	L9 AR-1268-4	9.649	8.254	21854970	114.9E6	324.918	300.007
45)	L9 AR-1268-5	10.080	8.552	5323078	27317589	14.380	8.711 #

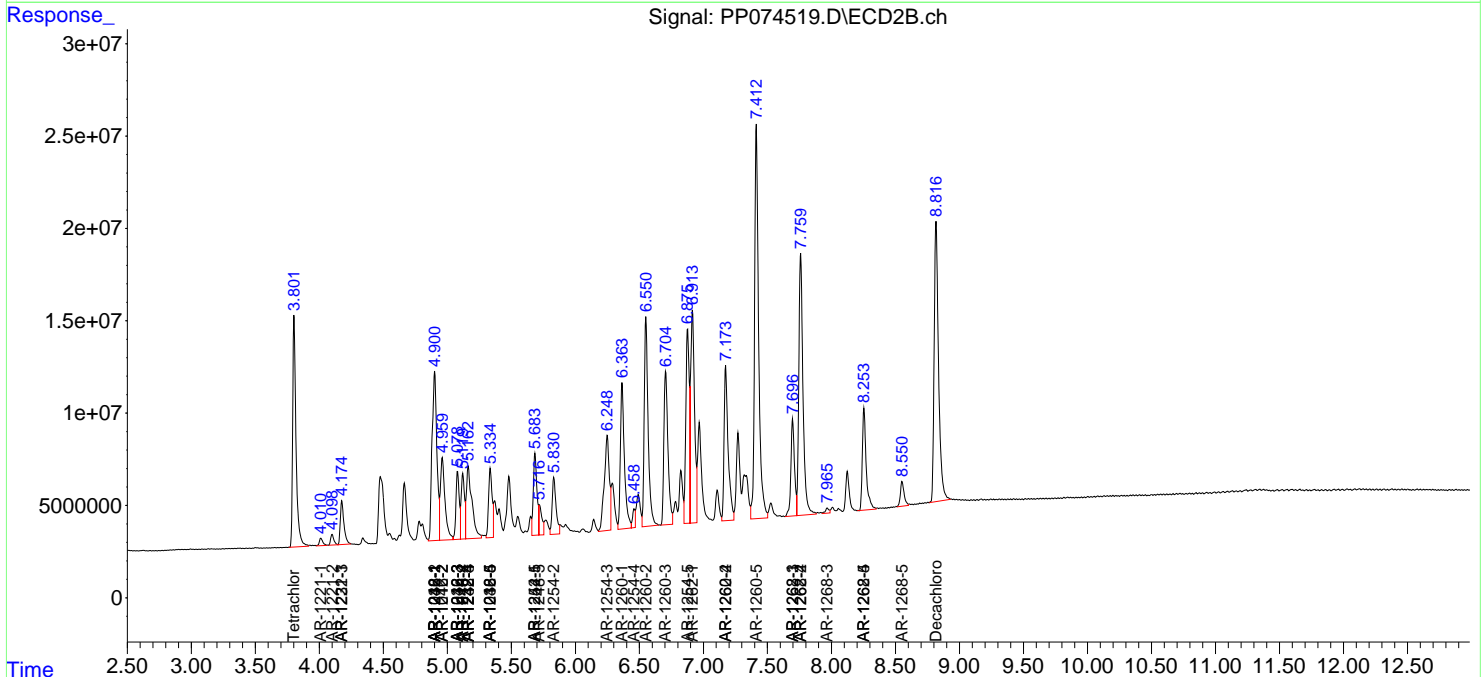
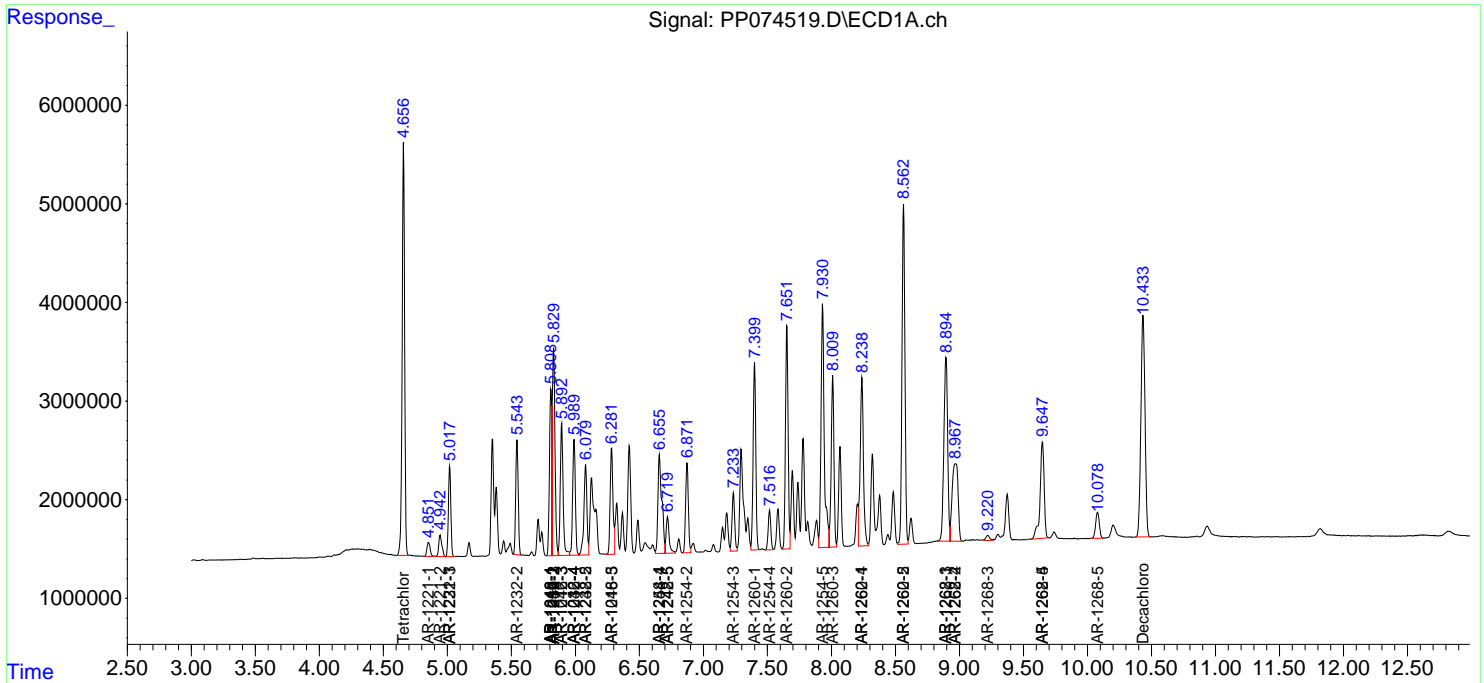
(f)=RT Delta > 1/2 Window (#)=Amounts differ by > 25% (m)=manual int.

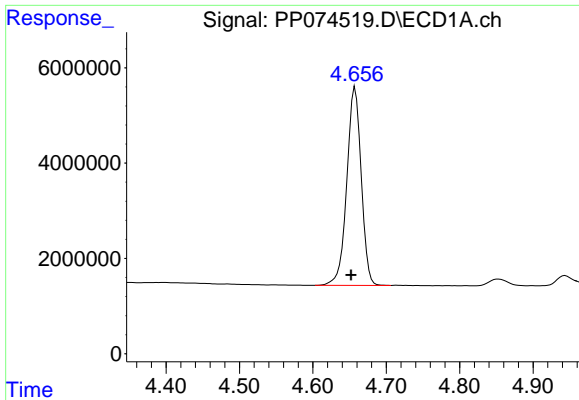
Data Path : Z:\pestpcbsrv\HPCHEM1\ECD\_P\Data\PP081925\  
 Data File : PP074519.D  
 Signal(s) : Signal #1: ECD1A.ch Signal #2: ECD2B.ch  
 Acq On : 19 Aug 2025 17:52  
 Operator : YP\AJ  
 Sample : PP081925ICV500  
 Misc :  
 ALS Vial : 31 Sample Multiplier: 1

Instrument :  
 ECD\_P  
 ClientSampleId :  
 ICVPP081925

Integration File signal 1: autoint1.e  
 Integration File signal 2: autoint2.e  
 Quant Time: Aug 20 06:23:09 2025  
 Quant Method : Z:\pestpcbsrv\HPCHEM1\ECD\_P\methods\PP081925.M  
 Quant Title : GC EXTRACTABLES  
 QLast Update : Wed Aug 20 06:20:44 2025  
 Response via : Initial Calibration  
 Integrator: ChemStation

Volume Inj. : 2 µl  
 Signal #1 Phase : ZB-MR1 Signal #2 Phase: ZB-MR2  
 Signal #1 Info : 30Mx0.32mmx 0.50µ Signal #2 Info : 30M x 0.32mm x 0.25µm

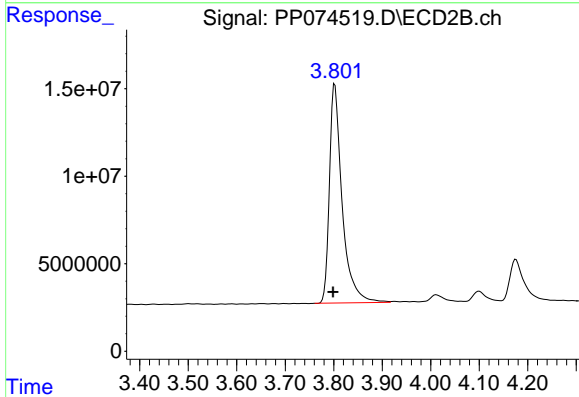




#1 Tetrachloro-m-xylene

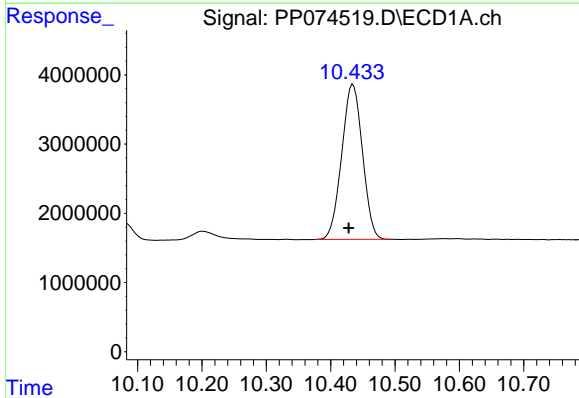
R.T.: 4.658 min  
 Delta R.T.: 0.006 min  
 Response: 56842653  
 Conc: 46.45 ng/ml

Instrument :  
 ECD\_P  
 ClientSampleId :  
 ICVPP081925



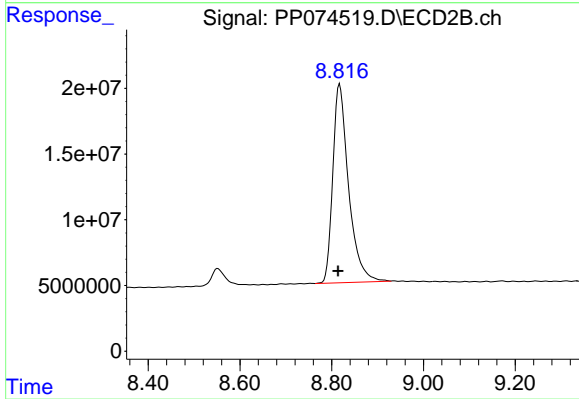
#1 Tetrachloro-m-xylene

R.T.: 3.802 min  
 Delta R.T.: 0.004 min  
 Response: 228519207  
 Conc: 47.26 ng/ml



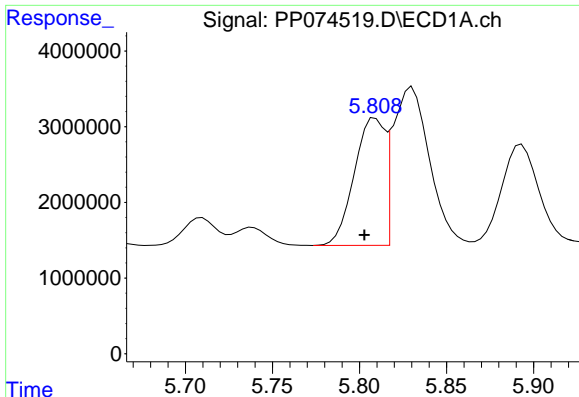
#2 Decachlorobiphenyl

R.T.: 10.435 min  
 Delta R.T.: 0.006 min  
 Response: 50219148  
 Conc: 50.85 ng/ml



#2 Decachlorobiphenyl

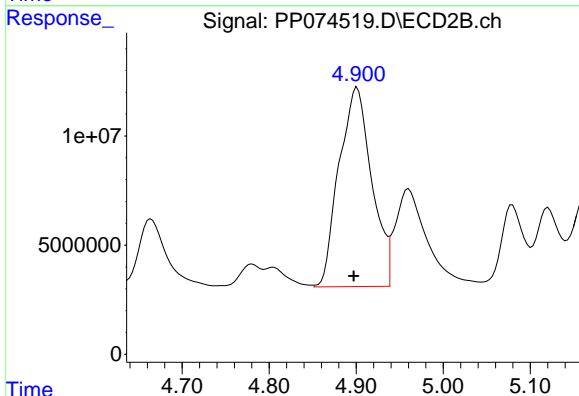
R.T.: 8.817 min  
 Delta R.T.: 0.003 min  
 Response: 360911594  
 Conc: 48.13 ng/ml



#3 AR-1016-1

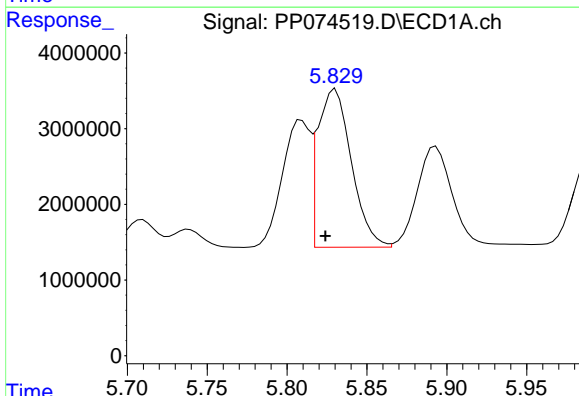
R.T.: 5.809 min  
 Delta R.T.: 0.006 min  
 Response: 20384085  
 Conc: 462.34 ng/ml

Instrument :  
 ECD\_P  
 ClientSampleId :  
 ICVPP081925



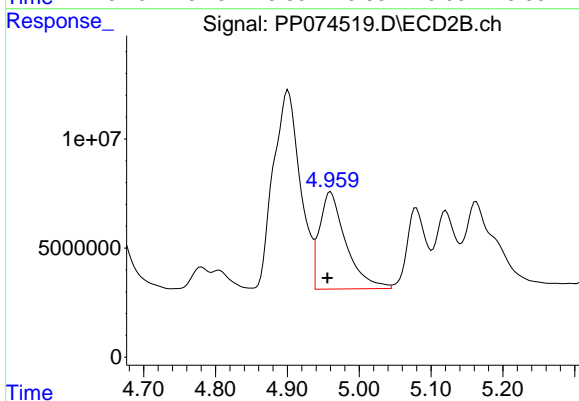
#3 AR-1016-1

R.T.: 4.901 min  
 Delta R.T.: 0.004 min  
 Response: 238277193  
 Conc: 467.80 ng/ml



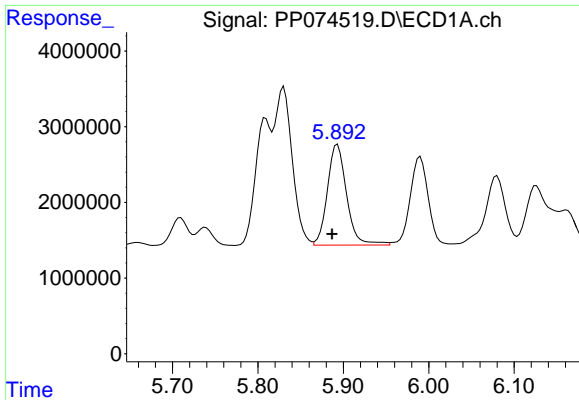
#4 AR-1016-2

R.T.: 5.830 min  
 Delta R.T.: 0.006 min  
 Response: 30649421  
 Conc: 487.72 ng/ml



#4 AR-1016-2

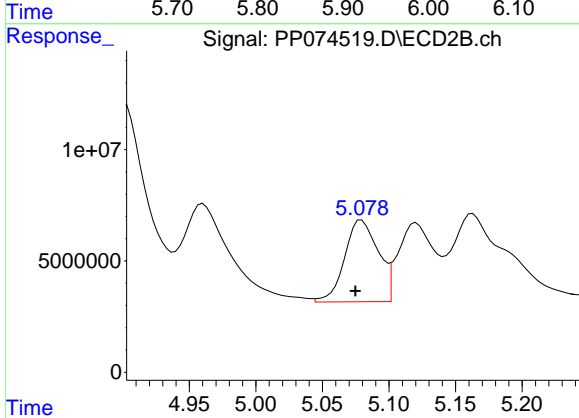
R.T.: 4.960 min  
 Delta R.T.: 0.005 min  
 Response: 113466189  
 Conc: 476.72 ng/ml



#5 AR-1016-3

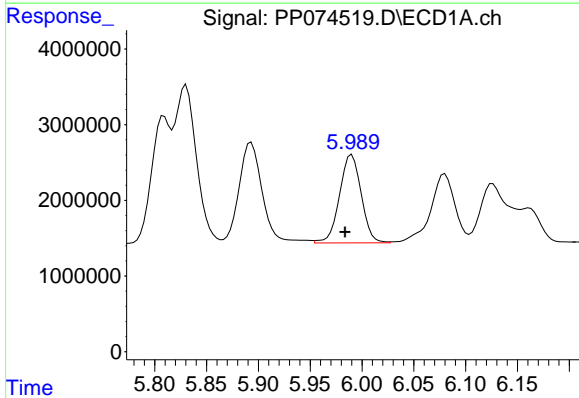
R.T.: 5.893 min  
 Delta R.T.: 0.006 min  
 Response: 20869297  
 Conc: 464.65 ng/ml

Instrument :  
 ECD\_P  
 ClientSampleId :  
 ICVPP081925



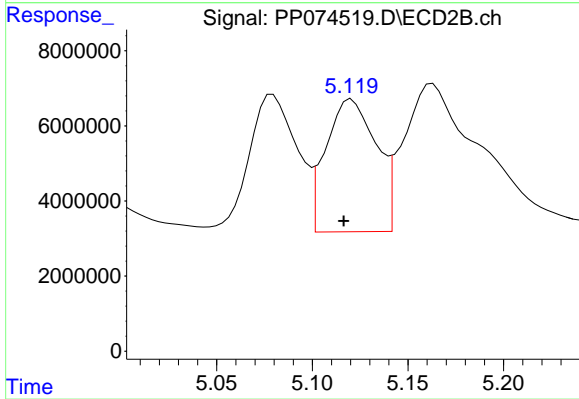
#5 AR-1016-3

R.T.: 5.079 min  
 Delta R.T.: 0.005 min  
 Response: 64619014  
 Conc: 468.58 ng/ml



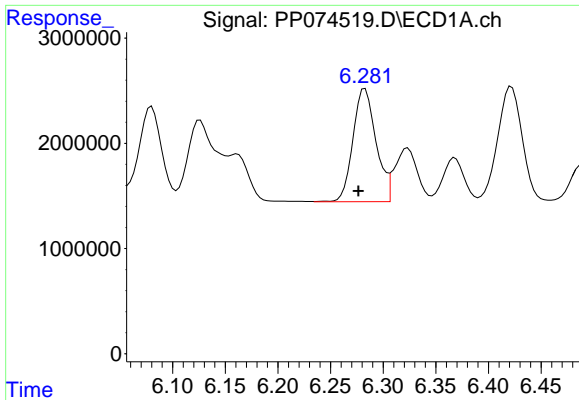
#6 AR-1016-4

R.T.: 5.990 min  
 Delta R.T.: 0.007 min  
 Response: 17006846  
 Conc: 483.40 ng/ml



#6 AR-1016-4

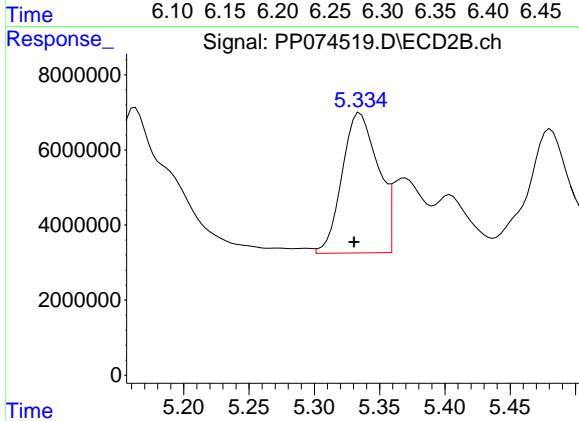
R.T.: 5.121 min  
 Delta R.T.: 0.004 min  
 Response: 64496987  
 Conc: 461.34 ng/ml



#7 AR-1016-5

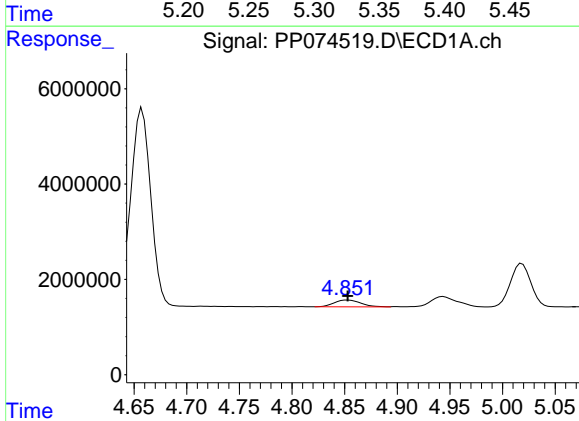
R.T.: 6.283 min  
 Delta R.T.: 0.006 min  
 Response: 16393488  
 Conc: 493.99 ng/ml

Instrument :  
 ECD\_P  
 ClientSampleId :  
 ICVPP081925



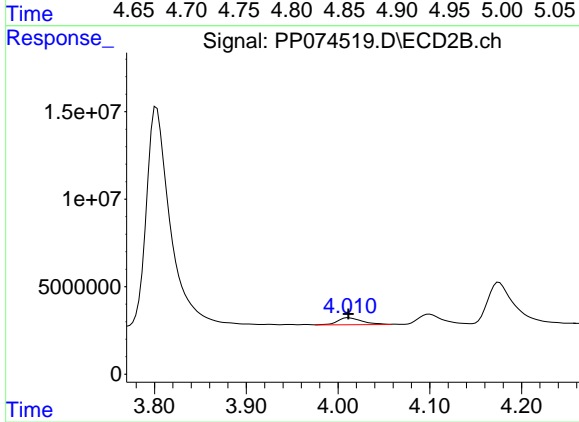
#7 AR-1016-5

R.T.: 5.335 min  
 Delta R.T.: 0.005 min  
 Response: 71417891  
 Conc: 430.01 ng/ml



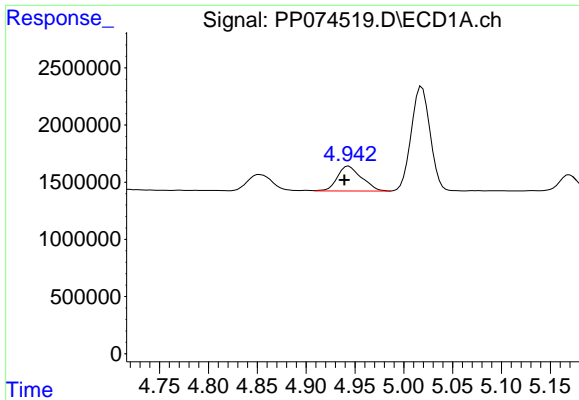
#8 AR-1221-1

R.T.: 4.853 min  
 Delta R.T.: 0.000 min  
 Response: 2488800  
 Conc: 141.47 ng/ml



#8 AR-1221-1

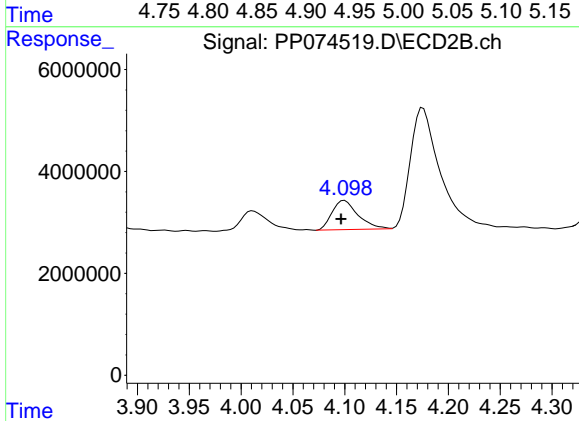
R.T.: 4.011 min  
 Delta R.T.: 0.000 min  
 Response: 7513616  
 Conc: 121.45 ng/ml



#9 AR-1221-2

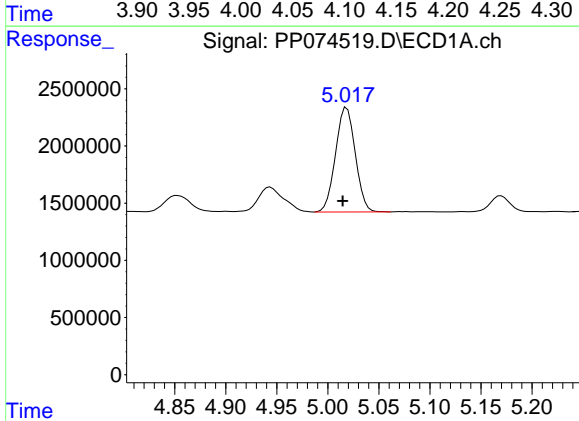
R.T.: 4.944 min  
 Delta R.T.: 0.005 min  
 Response: 3745274  
 Conc: 280.39 ng/ml

Instrument :  
 ECD\_P  
 ClientSampleId :  
 ICVPP081925



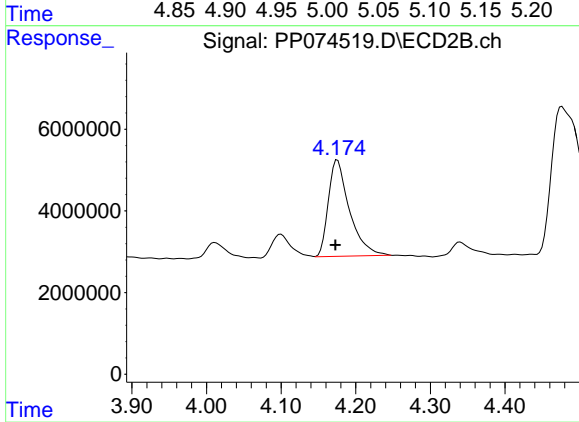
#9 AR-1221-2

R.T.: 4.100 min  
 Delta R.T.: 0.003 min  
 Response: 9988222  
 Conc: 220.92 ng/ml



#10 AR-1221-3

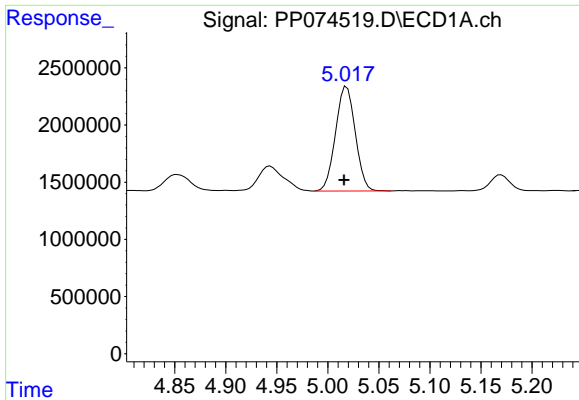
R.T.: 5.018 min  
 Delta R.T.: 0.004 min  
 Response: 12308513  
 Conc: 324.65 ng/ml



#10 AR-1221-3

R.T.: 4.176 min  
 Delta R.T.: 0.003 min  
 Response: 46584888  
 Conc: 283.55 ng/ml

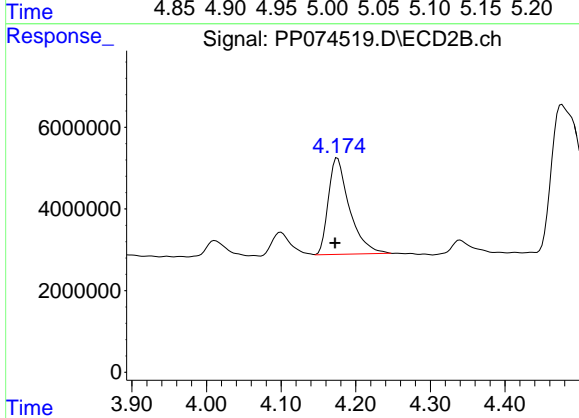




#11 AR-1232-1

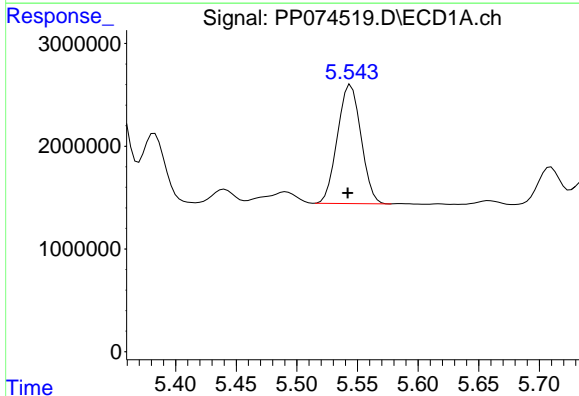
R.T.: 5.018 min  
 Delta R.T.: 0.002 min  
 Response: 12308513  
 Conc: 405.23 ng/ml

Instrument :  
 ECD\_P  
 ClientSampleId :  
 ICVPP081925



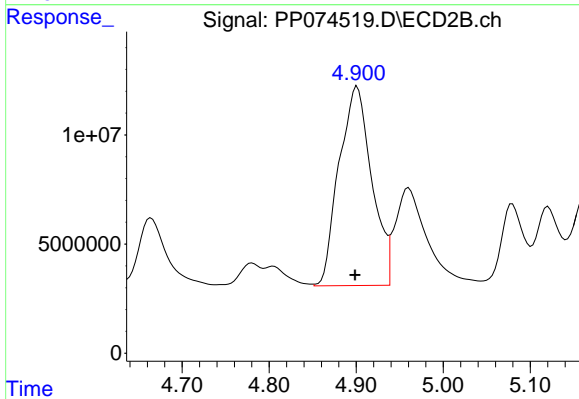
#11 AR-1232-1

R.T.: 4.176 min  
 Delta R.T.: 0.003 min  
 Response: 46584888  
 Conc: 363.67 ng/ml



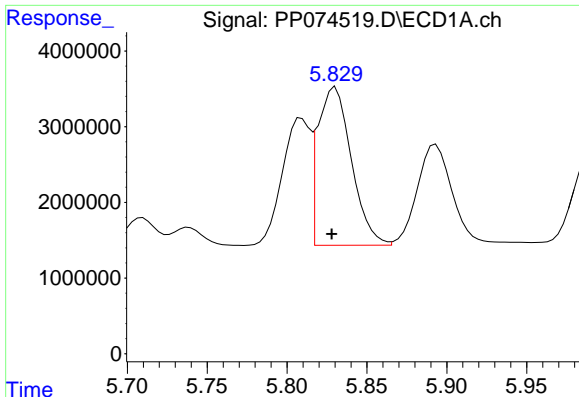
#12 AR-1232-2

R.T.: 5.544 min  
 Delta R.T.: 0.003 min  
 Response: 15642129  
 Conc: 992.63 ng/ml



#12 AR-1232-2

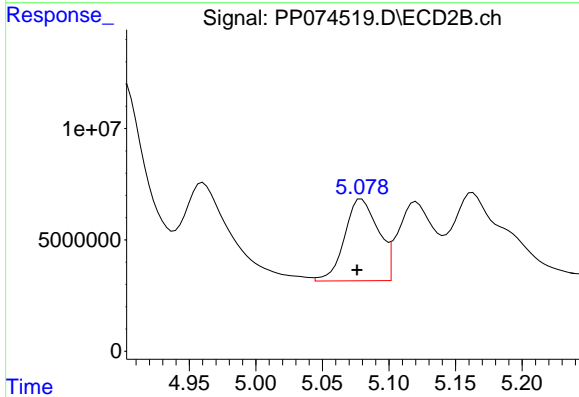
R.T.: 4.901 min  
 Delta R.T.: 0.003 min  
 Response: 238277193  
 Conc: 1027.97 ng/ml



#13 AR-1232-3

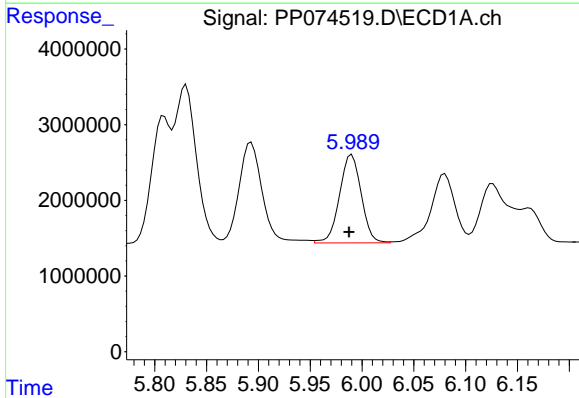
R.T.: 5.830 min  
 Delta R.T.: 0.002 min  
 Response: 30649421  
 Conc: 1003.46 ng/ml

Instrument :  
 ECD\_P  
 ClientSampleId :  
 ICVPP081925



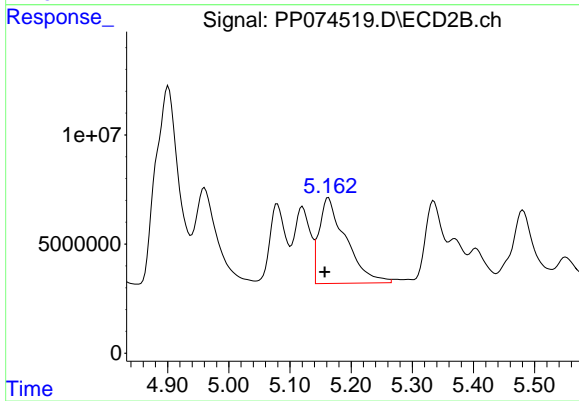
#13 AR-1232-3

R.T.: 5.079 min  
 Delta R.T.: 0.003 min  
 Response: 64619014  
 Conc: 1075.91 ng/ml



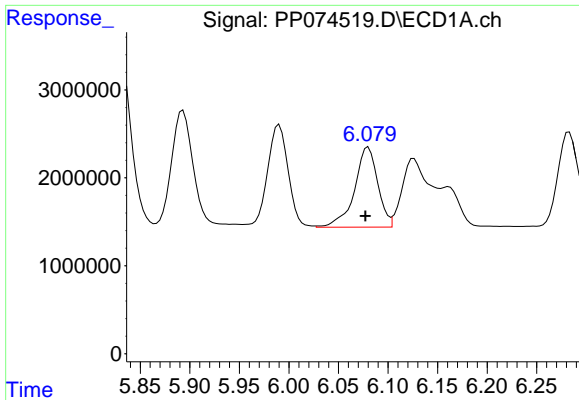
#14 AR-1232-4

R.T.: 5.990 min  
 Delta R.T.: 0.003 min  
 Response: 17006846  
 Conc: 984.80 ng/ml



#14 AR-1232-4

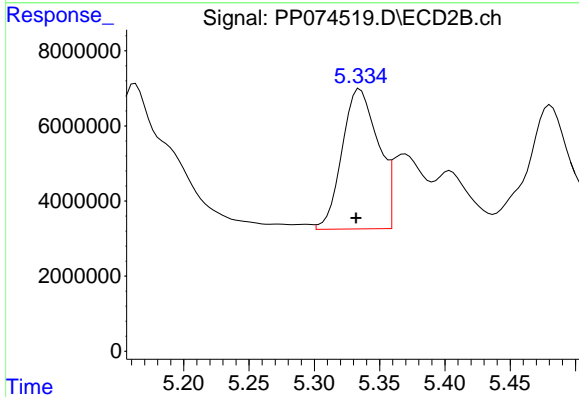
R.T.: 5.163 min  
 Delta R.T.: 0.006 min  
 Response: 118990073  
 Conc: 1614.36 ng/ml



#15 AR-1232-5

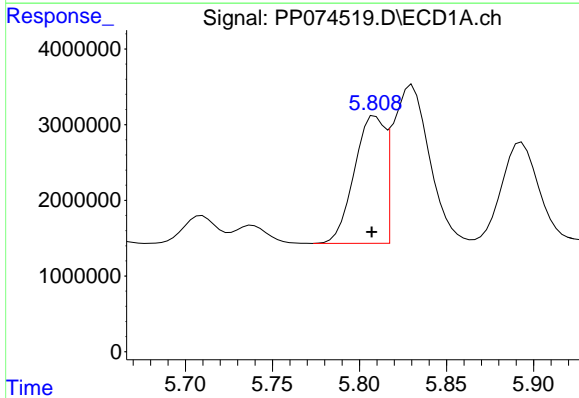
R.T.: 6.080 min  
 Delta R.T.: 0.003 min  
 Response: 14860374  
 Conc: 1144.78 ng/ml

Instrument :  
 ECD\_P  
 ClientSampleId :  
 ICVPP081925



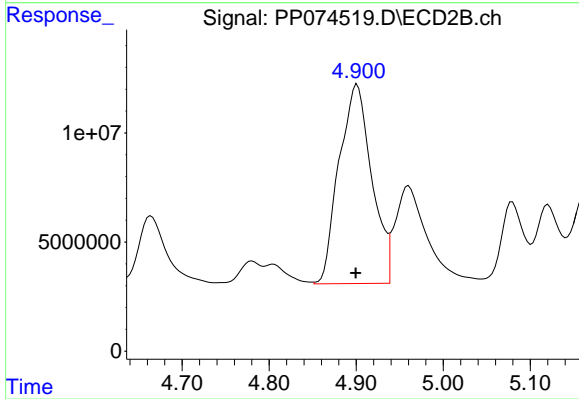
#15 AR-1232-5

R.T.: 5.335 min  
 Delta R.T.: 0.003 min  
 Response: 71417891  
 Conc: 1150.35 ng/ml



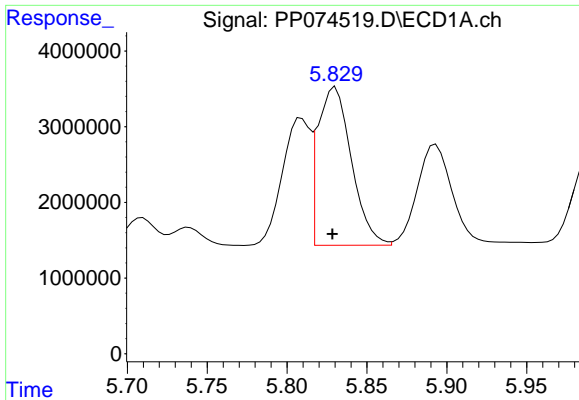
#16 AR-1242-1

R.T.: 5.809 min  
 Delta R.T.: 0.002 min  
 Response: 20384085  
 Conc: 532.57 ng/ml



#16 AR-1242-1

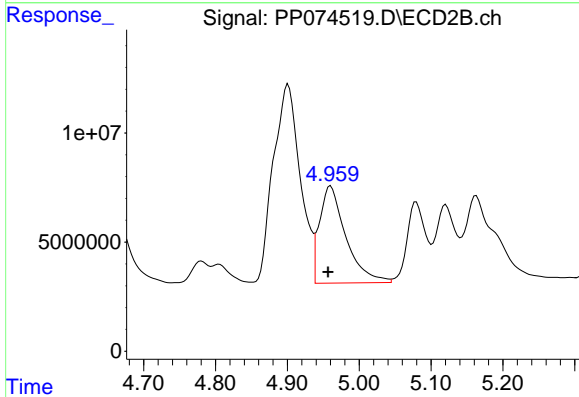
R.T.: 4.901 min  
 Delta R.T.: 0.002 min  
 Response: 238277193  
 Conc: 564.97 ng/ml



#17 AR-1242-2

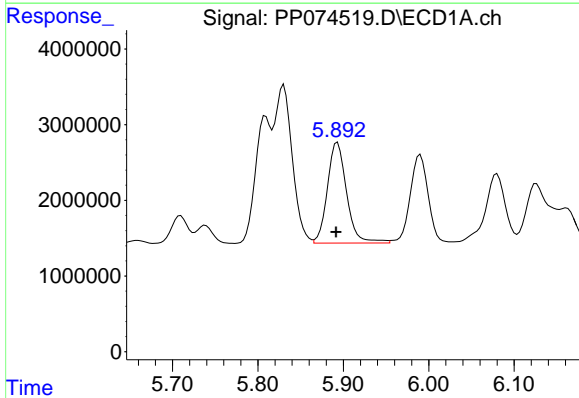
R.T.: 5.830 min  
 Delta R.T.: 0.002 min  
 Response: 30649421  
 Conc: 542.64 ng/ml

Instrument :  
 ECD\_P  
 ClientSampleId :  
 ICVPP081925



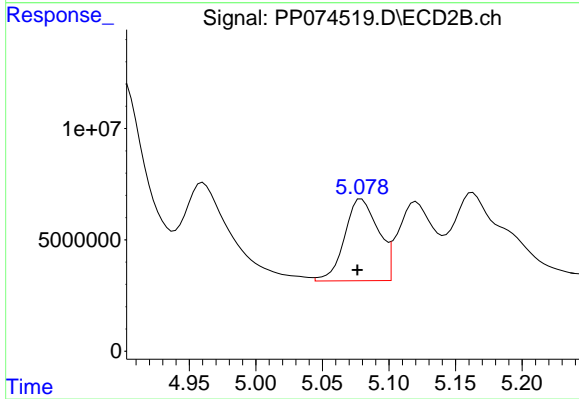
#17 AR-1242-2

R.T.: 4.960 min  
 Delta R.T.: 0.003 min  
 Response: 113466189  
 Conc: 566.53 ng/ml



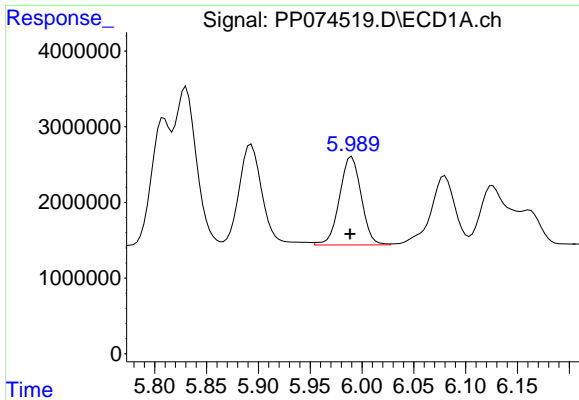
#18 AR-1242-3

R.T.: 5.893 min  
 Delta R.T.: 0.002 min  
 Response: 20869297  
 Conc: 513.99 ng/ml



#18 AR-1242-3

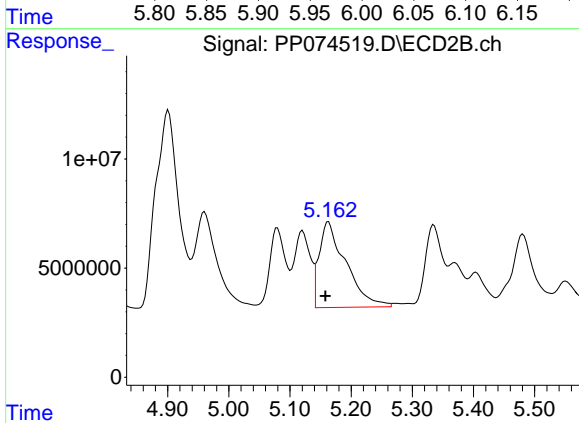
R.T.: 5.079 min  
 Delta R.T.: 0.003 min  
 Response: 64619014  
 Conc: 546.24 ng/ml



#19 AR-1242-4

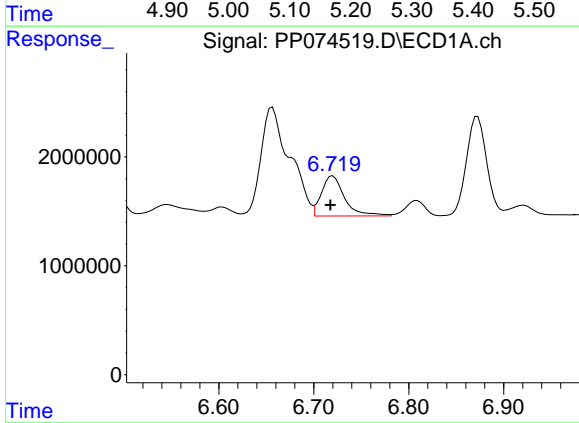
R.T.: 5.990 min  
 Delta R.T.: 0.002 min  
 Response: 17006846  
 Conc: 535.79 ng/ml

Instrument :  
 ECD\_P  
 ClientSampleId :  
 ICVPP081925



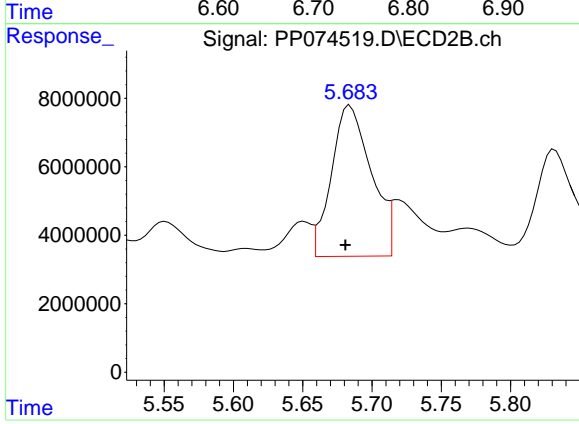
#19 AR-1242-4

R.T.: 5.163 min  
 Delta R.T.: 0.005 min  
 Response: 118990073  
 Conc: 695.20 ng/ml



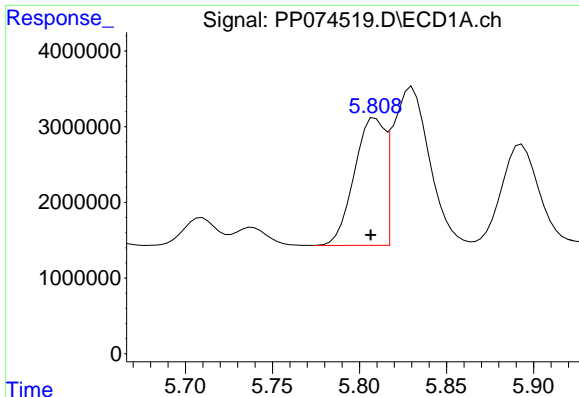
#20 AR-1242-5

R.T.: 6.720 min  
 Delta R.T.: 0.003 min  
 Response: 6226963  
 Conc: 172.63 ng/ml



#20 AR-1242-5

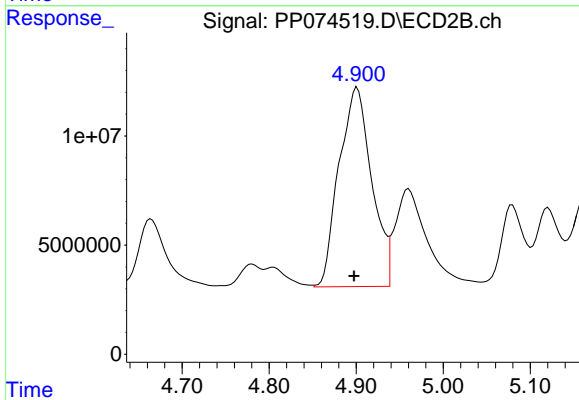
R.T.: 5.684 min  
 Delta R.T.: 0.003 min  
 Response: 88051530  
 Conc: 475.53 ng/ml



#21 AR-1248-1

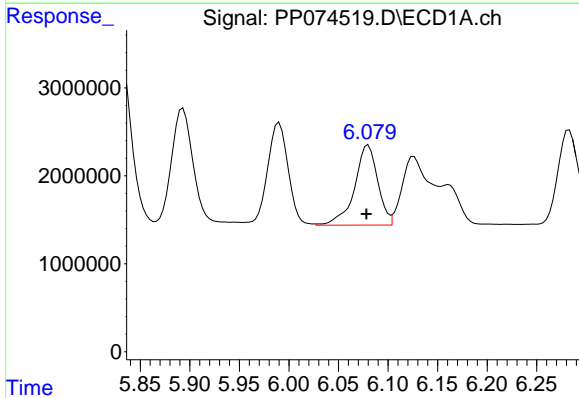
R.T.: 5.809 min  
 Delta R.T.: 0.003 min  
 Response: 20384085  
 Conc: 674.43 ng/ml

Instrument :  
 ECD\_P  
 ClientSampleId :  
 ICVPP081925



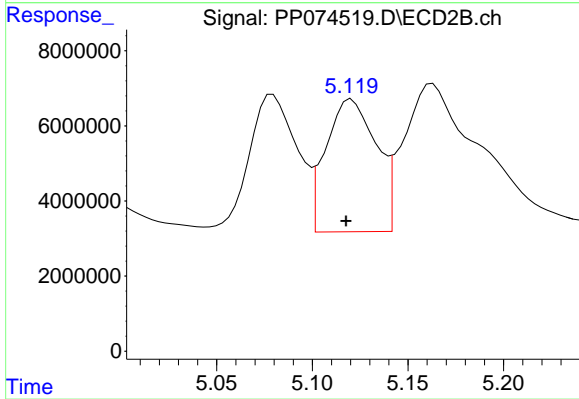
#21 AR-1248-1

R.T.: 4.901 min  
 Delta R.T.: 0.004 min  
 Response: 238277193  
 Conc: 862.88 ng/ml



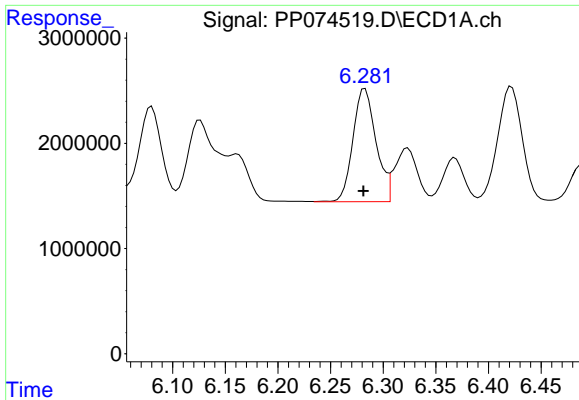
#22 AR-1248-2

R.T.: 6.080 min  
 Delta R.T.: 0.002 min  
 Response: 14860374  
 Conc: 344.82 ng/ml



#22 AR-1248-2

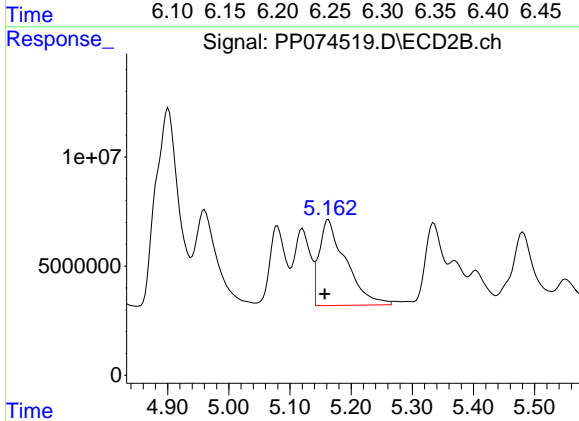
R.T.: 5.121 min  
 Delta R.T.: 0.003 min  
 Response: 64496987  
 Conc: 364.89 ng/ml



#23 AR-1248-3

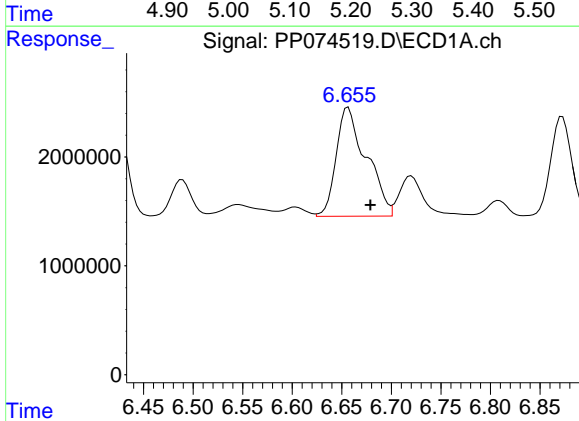
R.T.: 6.283 min  
 Delta R.T.: 0.002 min  
 Response: 16393488  
 Conc: 351.01 ng/ml

Instrument :  
 ECD\_P  
 ClientSampleId :  
 ICVPP081925



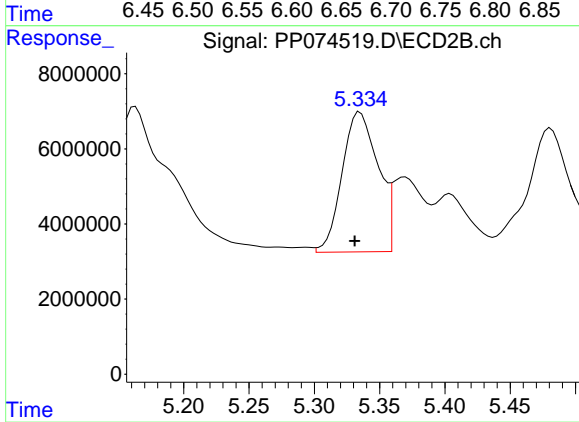
#23 AR-1248-3

R.T.: 5.163 min  
 Delta R.T.: 0.006 min  
 Response: 118990073  
 Conc: 523.72 ng/ml



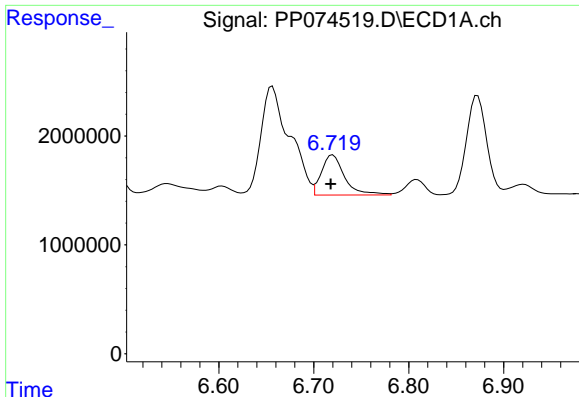
#24 AR-1248-4

R.T.: 6.656 min  
 Delta R.T.: -0.022 min  
 Response: 21114278  
 Conc: 383.89 ng/ml



#24 AR-1248-4

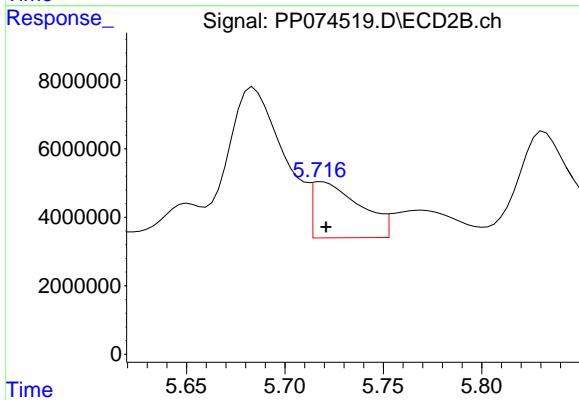
R.T.: 5.335 min  
 Delta R.T.: 0.004 min  
 Response: 71417891  
 Conc: 327.57 ng/ml



#25 AR-1248-5

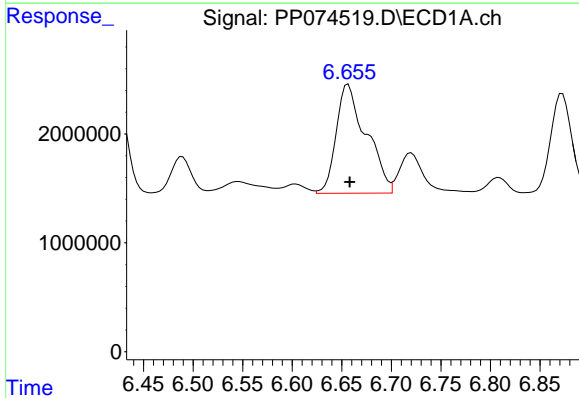
R.T.: 6.720 min  
 Delta R.T.: 0.002 min  
 Response: 6226963  
 Conc: 112.26 ng/ml

Instrument :  
 ECD\_P  
 ClientSampleId :  
 ICVPP081925



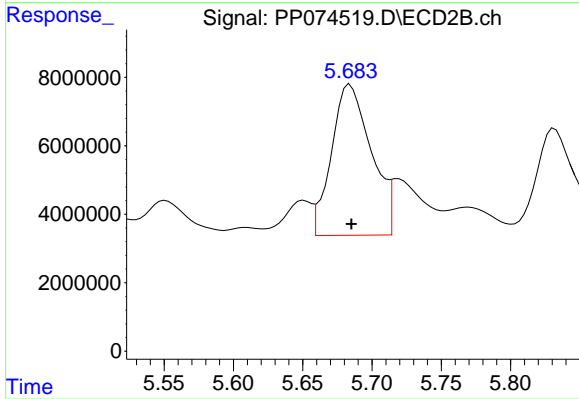
#25 AR-1248-5

R.T.: 5.719 min  
 Delta R.T.: -0.002 min  
 Response: 27418665  
 Conc: 74.64 ng/ml



#26 AR-1254-1

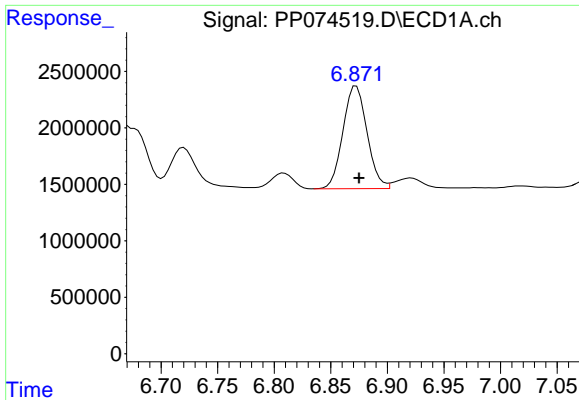
R.T.: 6.656 min  
 Delta R.T.: -0.002 min  
 Response: 21114278  
 Conc: 362.36 ng/ml



#26 AR-1254-1

R.T.: 5.684 min  
 Delta R.T.: -0.001 min  
 Response: 88051530  
 Conc: 184.71 ng/ml

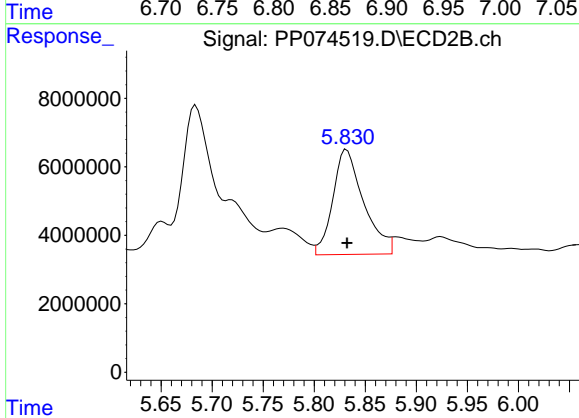




#27 AR-1254-2

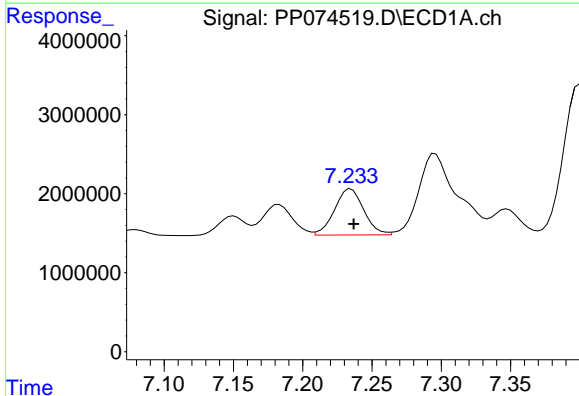
R.T.: 6.873 min  
 Delta R.T.: -0.002 min  
 Response: 13484083  
 Conc: 165.21 ng/ml

Instrument :  
 ECD\_P  
 ClientSampleId :  
 ICVPP081925



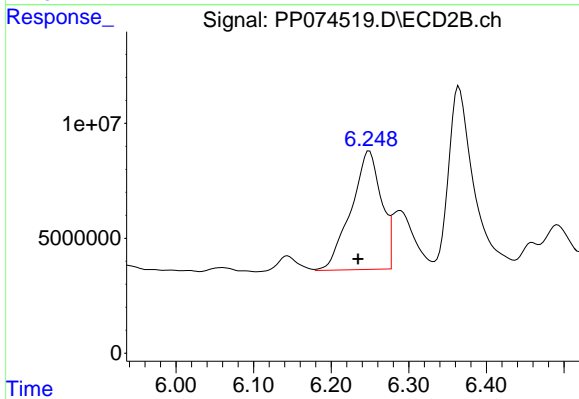
#27 AR-1254-2

R.T.: 5.832 min  
 Delta R.T.: 0.000 min  
 Response: 64419060  
 Conc: 182.94 ng/ml



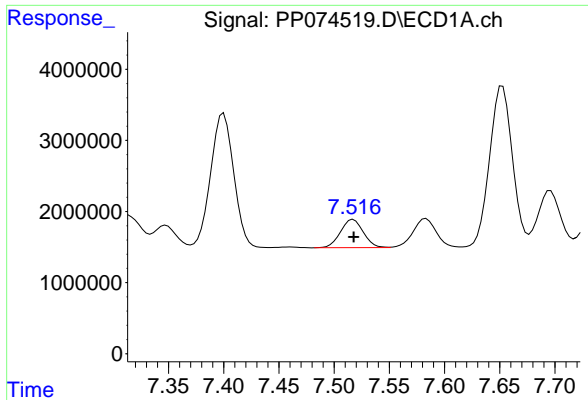
#28 AR-1254-3

R.T.: 7.235 min  
 Delta R.T.: -0.002 min  
 Response: 8562843  
 Conc: 95.99 ng/ml



#28 AR-1254-3

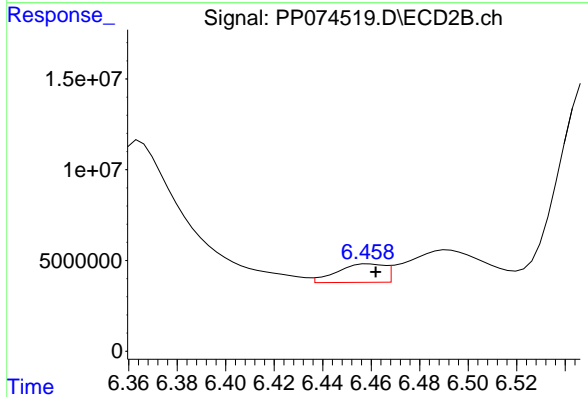
R.T.: 6.249 min  
 Delta R.T.: 0.015 min  
 Response: 139578157  
 Conc: 225.20 ng/ml



#29 AR-1254-4

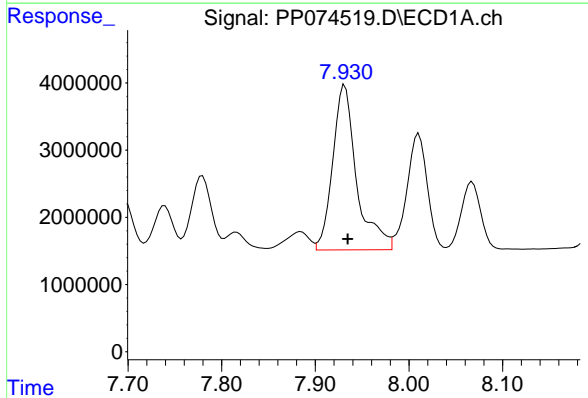
R.T.: 7.517 min  
 Delta R.T.: 0.000 min  
 Response: 5690163  
 Conc: 86.33 ng/ml

Instrument :  
 ECD\_P  
 ClientSampleId :  
 ICVPP081925



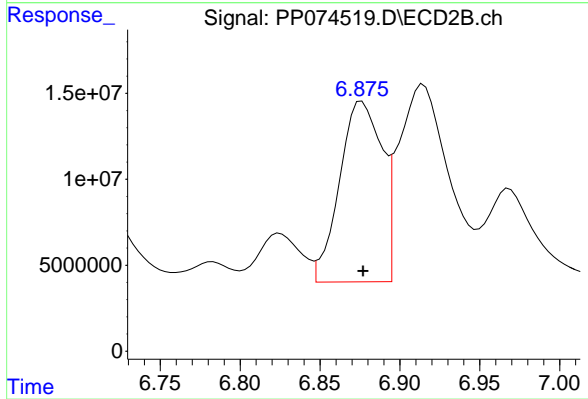
#29 AR-1254-4

R.T.: 6.459 min  
 Delta R.T.: -0.003 min  
 Response: 13765496  
 Conc: 29.37 ng/ml



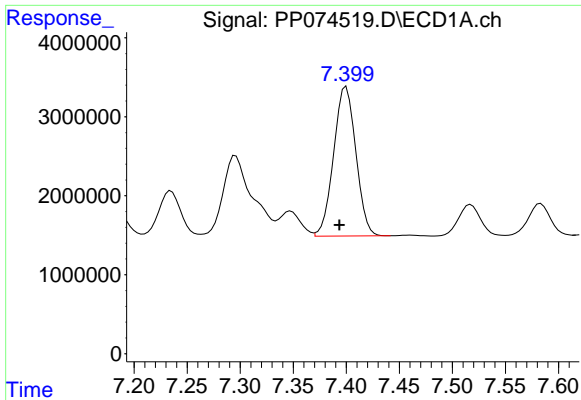
#30 AR-1254-5

R.T.: 7.932 min  
 Delta R.T.: -0.003 min  
 Response: 43681313  
 Conc: 525.74 ng/ml



#30 AR-1254-5

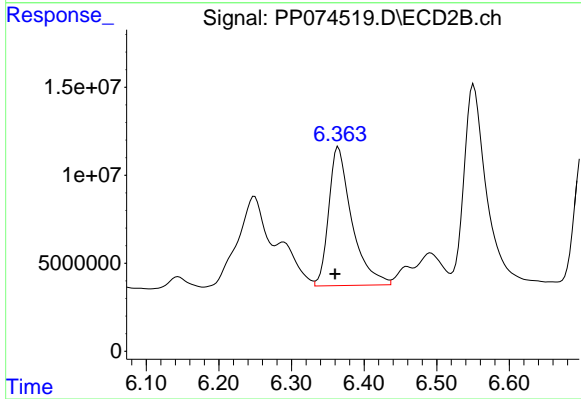
R.T.: 6.876 min  
 Delta R.T.: 0.000 min  
 Response: 192981049  
 Conc: 393.44 ng/ml



#31 AR-1260-1

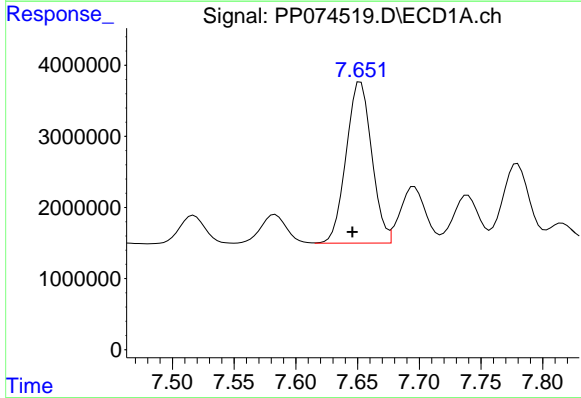
R.T.: 7.400 min  
 Delta R.T.: 0.006 min  
 Response: 27587306  
 Conc: 477.21 ng/ml

Instrument :  
 ECD\_P  
 ClientSampleId :  
 ICVPP081925



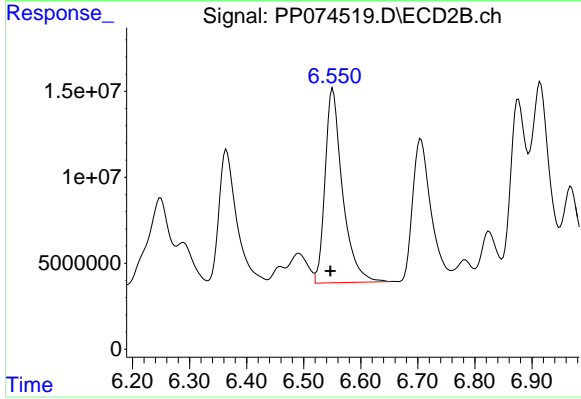
#31 AR-1260-1

R.T.: 6.365 min  
 Delta R.T.: 0.005 min  
 Response: 174195898  
 Conc: 464.25 ng/ml



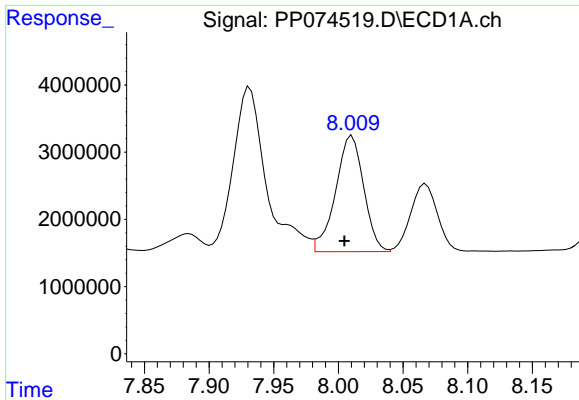
#32 AR-1260-2

R.T.: 7.652 min  
 Delta R.T.: 0.006 min  
 Response: 32691813  
 Conc: 474.36 ng/ml



#32 AR-1260-2

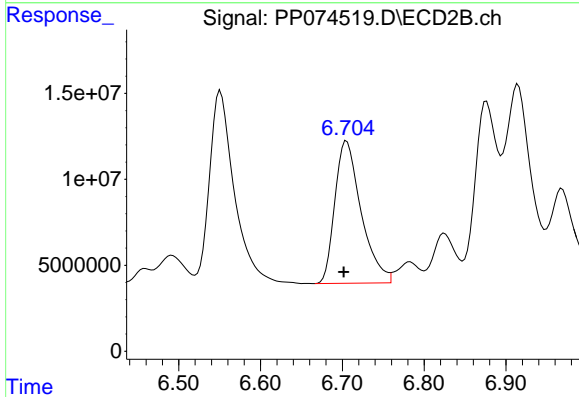
R.T.: 6.551 min  
 Delta R.T.: 0.004 min  
 Response: 240410950  
 Conc: 454.62 ng/ml



#33 AR-1260-3

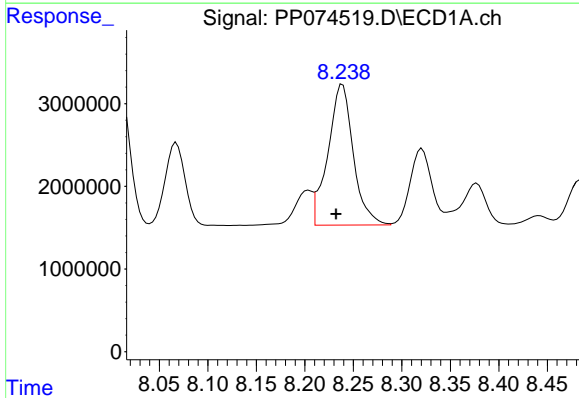
R.T.: 8.011 min  
 Delta R.T.: 0.006 min  
 Response: 26067073  
 Conc: 502.40 ng/ml

Instrument :  
 ECD\_P  
 ClientSampleId :  
 ICVPP081925



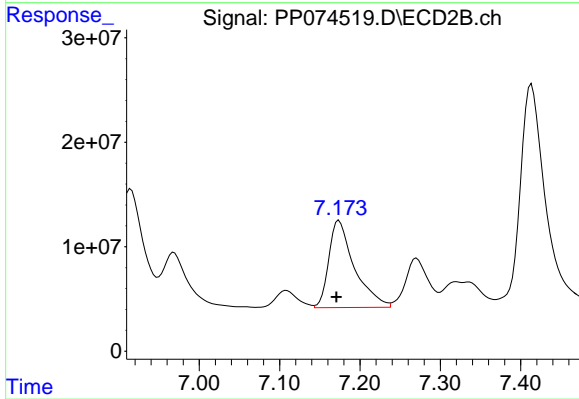
#33 AR-1260-3

R.T.: 6.705 min  
 Delta R.T.: 0.004 min  
 Response: 184687580  
 Conc: 426.53 ng/ml



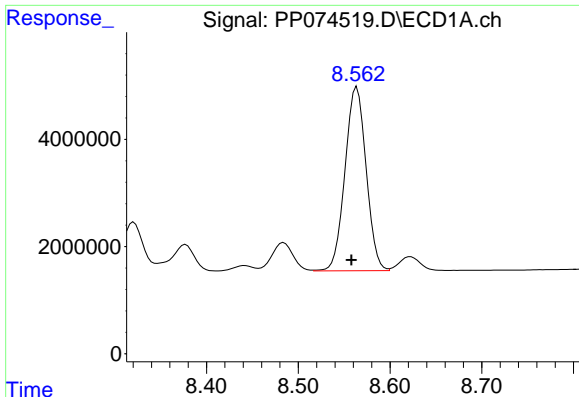
#34 AR-1260-4

R.T.: 8.239 min  
 Delta R.T.: 0.007 min  
 Response: 30945462  
 Conc: 485.09 ng/ml



#34 AR-1260-4

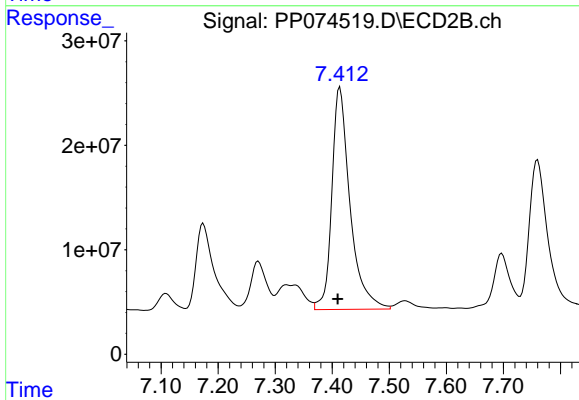
R.T.: 7.174 min  
 Delta R.T.: 0.003 min  
 Response: 184495236  
 Conc: 483.64 ng/ml



#35 AR-1260-5

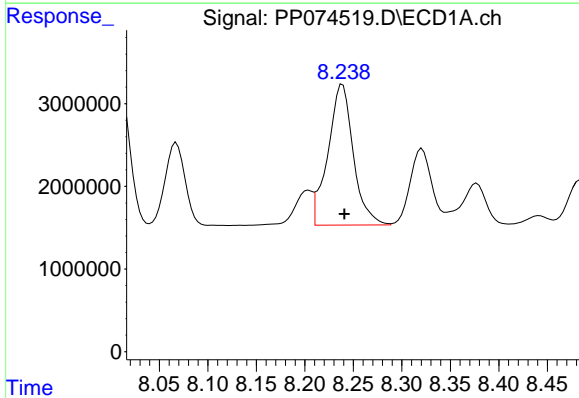
R.T.: 8.564 min  
 Delta R.T.: 0.006 min  
 Response: 54844125  
 Conc: 483.58 ng/ml

Instrument :  
 ECD\_P  
 ClientSampleId :  
 ICVPP081925



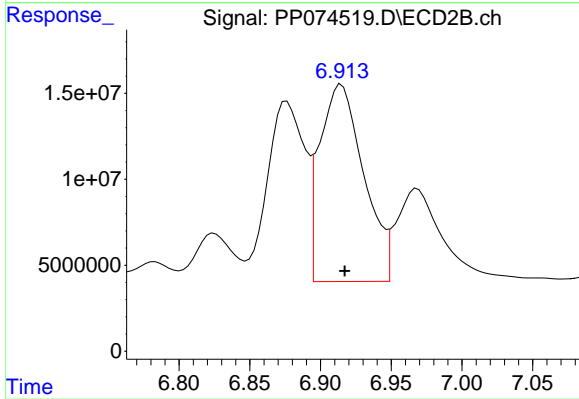
#35 AR-1260-5

R.T.: 7.414 min  
 Delta R.T.: 0.004 min  
 Response: 472379018  
 Conc: 470.27 ng/ml



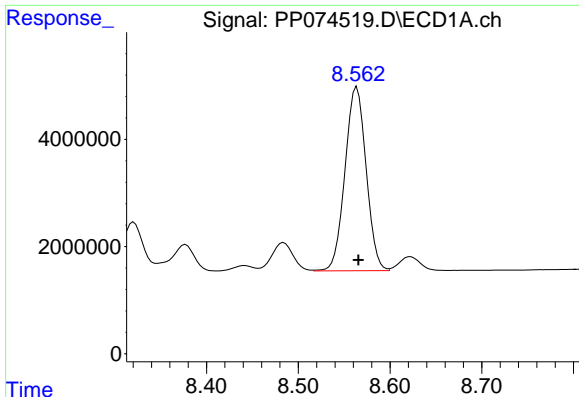
#36 AR-1262-1

R.T.: 8.239 min  
 Delta R.T.: -0.002 min  
 Response: 30945462  
 Conc: 401.81 ng/ml



#36 AR-1262-1

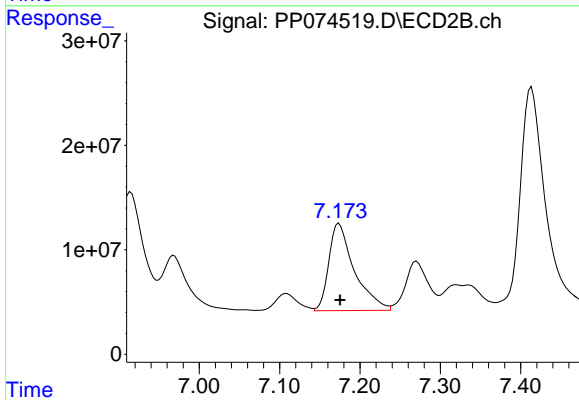
R.T.: 6.915 min  
 Delta R.T.: -0.002 min  
 Response: 249113811  
 Conc: 352.22 ng/ml



#37 AR-1262-2

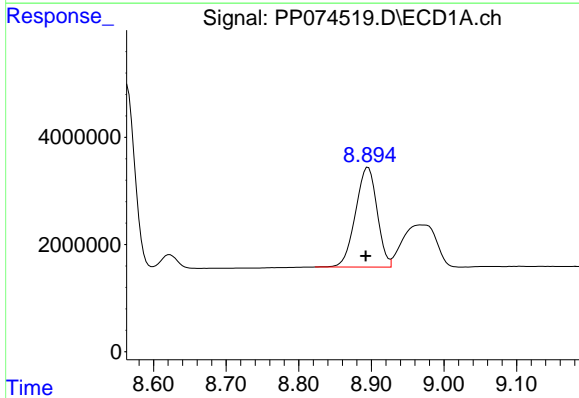
R.T.: 8.564 min  
 Delta R.T.: -0.002 min  
 Response: 54844125  
 Conc: 414.29 ng/ml

Instrument :  
 ECD\_P  
 ClientSampleId :  
 ICVPP081925



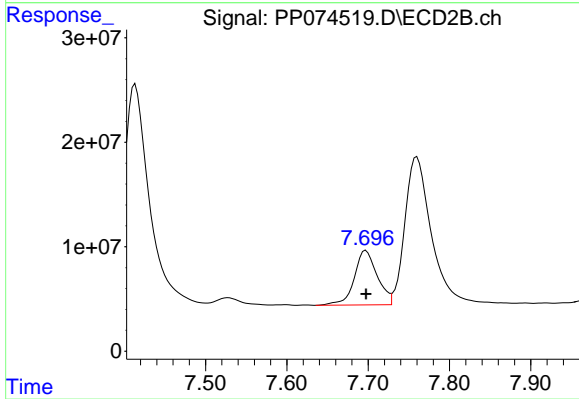
#37 AR-1262-2

R.T.: 7.174 min  
 Delta R.T.: -0.001 min  
 Response: 184495236  
 Conc: 354.31 ng/ml



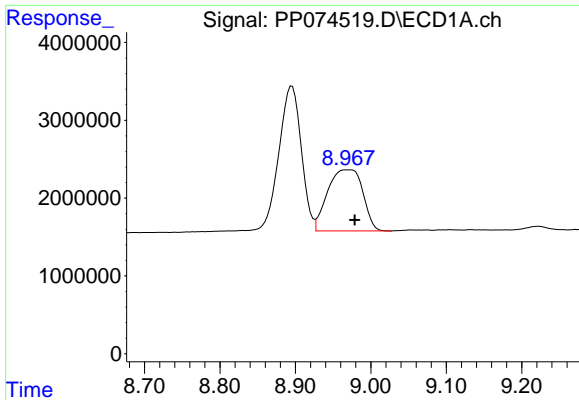
#38 AR-1262-3

R.T.: 8.896 min  
 Delta R.T.: 0.003 min  
 Response: 38355675  
 Conc: 394.56 ng/ml



#38 AR-1262-3

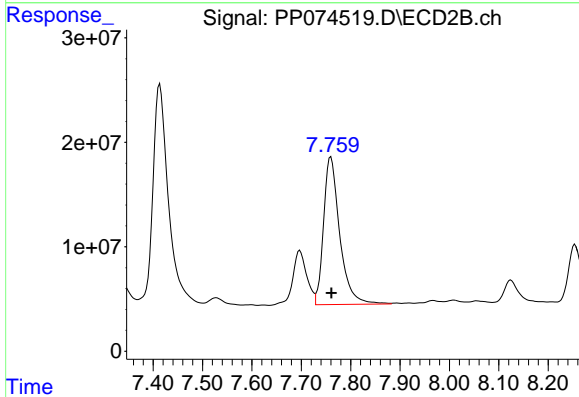
R.T.: 7.697 min  
 Delta R.T.: 0.000 min  
 Response: 102467528  
 Conc: 219.75 ng/ml



#39 AR-1262-4

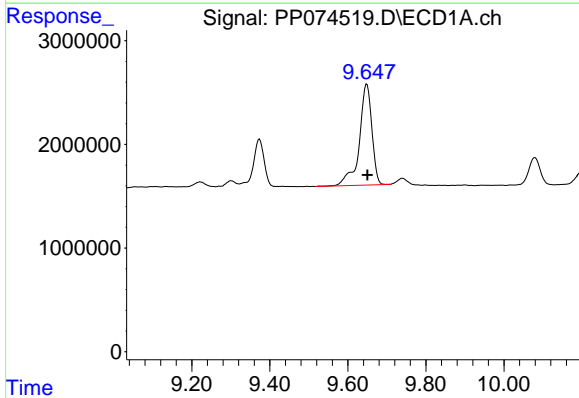
R.T.: 8.968 min  
Delta R.T.: -0.011 min  
Response: 25452738  
Conc: 337.88 ng/ml

Instrument :  
ECD\_P  
ClientSampleId :  
ICVPP081925



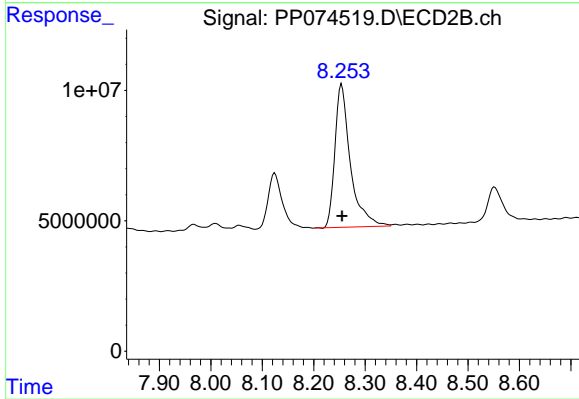
#39 AR-1262-4

R.T.: 7.760 min  
Delta R.T.: -0.001 min  
Response: 321715518  
Conc: 391.45 ng/ml



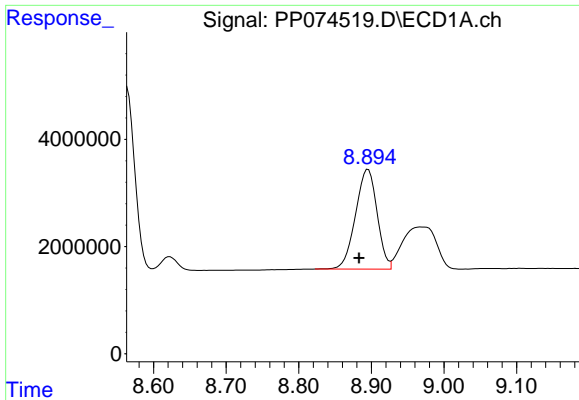
#40 AR-1262-5

R.T.: 9.649 min  
Delta R.T.: -0.001 min  
Response: 21854970  
Conc: 358.54 ng/ml



#40 AR-1262-5

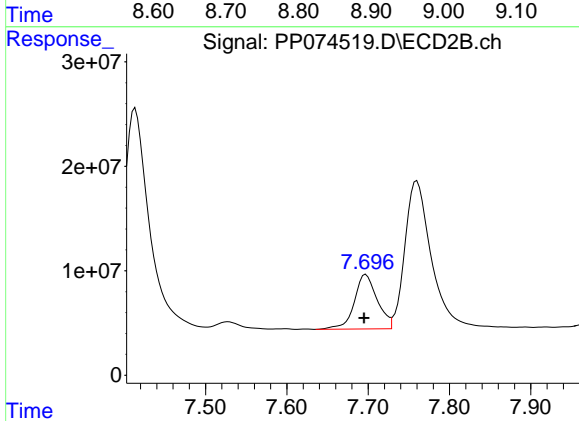
R.T.: 8.254 min  
Delta R.T.: 0.000 min  
Response: 114931566  
Conc: 320.76 ng/ml



#41 AR-1268-1

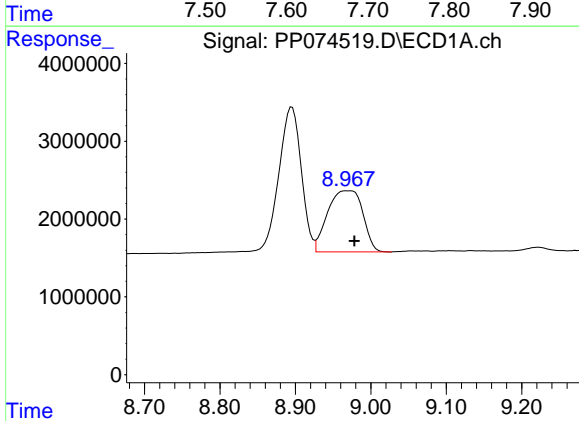
R.T.: 8.896 min  
 Delta R.T.: 0.013 min  
 Response: 38355675  
 Conc: 236.71 ng/ml

Instrument :  
 ECD\_P  
 ClientSampleId :  
 ICVPP081925



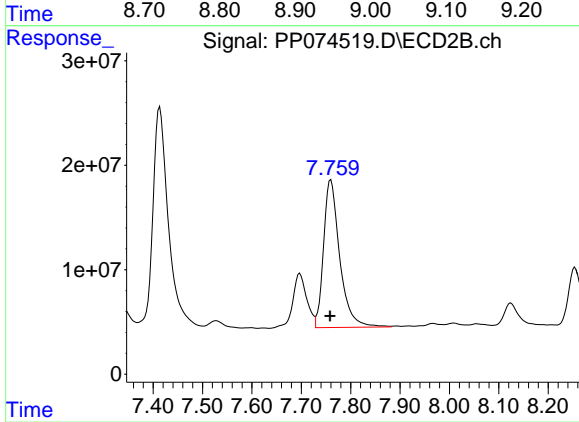
#41 AR-1268-1

R.T.: 7.697 min  
 Delta R.T.: 0.002 min  
 Response: 102467528  
 Conc: 72.65 ng/ml



#42 AR-1268-2

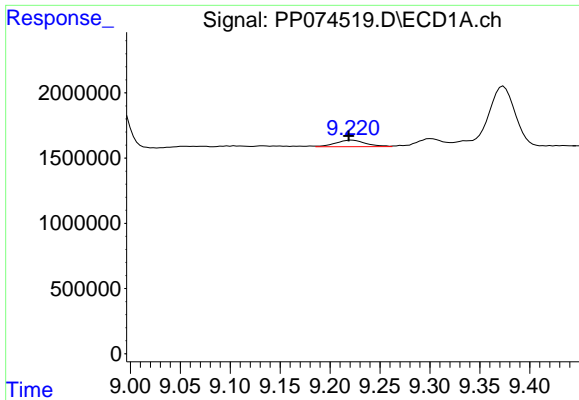
R.T.: 8.968 min  
 Delta R.T.: -0.010 min  
 Response: 25452738  
 Conc: 173.46 ng/ml



#42 AR-1268-2

R.T.: 7.760 min  
 Delta R.T.: 0.002 min  
 Response: 321715518  
 Conc: 235.96 ng/ml

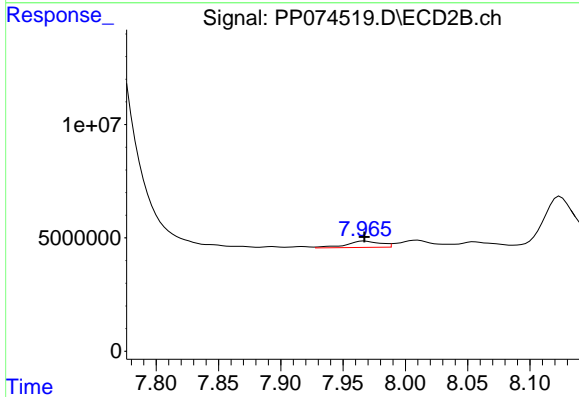




#43 AR-1268-3

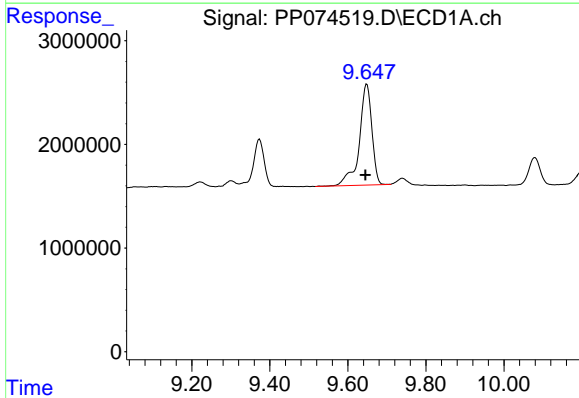
R.T.: 9.222 min  
 Delta R.T.: 0.003 min  
 Response: 1051531  
 Conc: 8.51 ng/ml

Instrument :  
 ECD\_P  
 ClientSampleId :  
 ICVPP081925



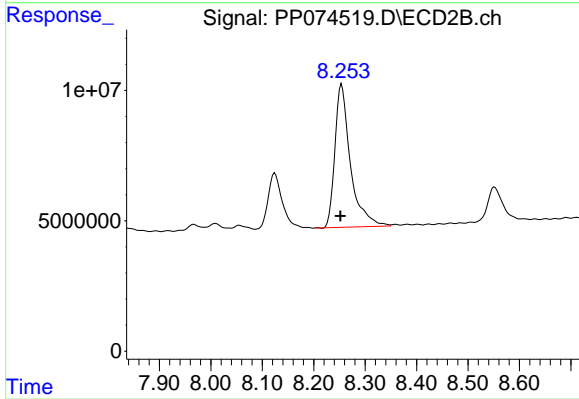
#43 AR-1268-3

R.T.: 7.967 min  
 Delta R.T.: 0.000 min  
 Response: 5291372  
 Conc: 5.07 ng/ml



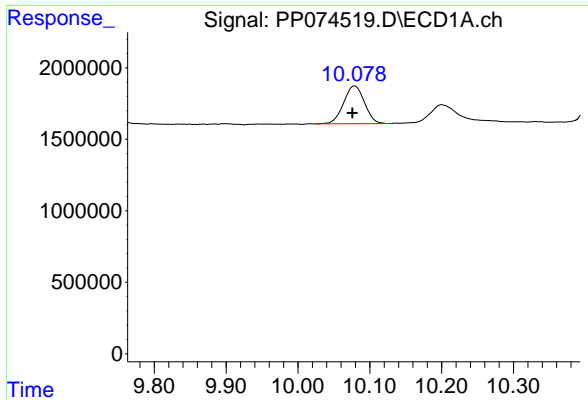
#44 AR-1268-4

R.T.: 9.649 min  
 Delta R.T.: 0.003 min  
 Response: 21854970  
 Conc: 324.92 ng/ml



#44 AR-1268-4

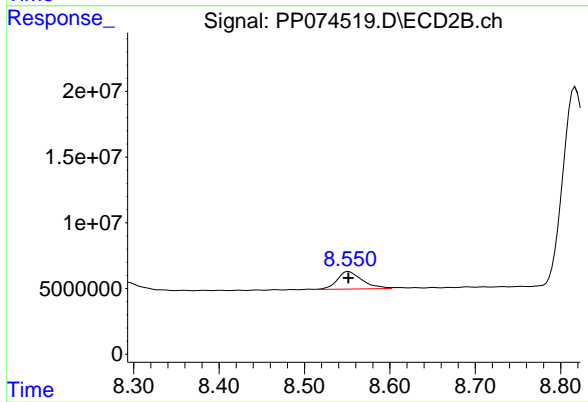
R.T.: 8.254 min  
 Delta R.T.: 0.003 min  
 Response: 114931566  
 Conc: 300.01 ng/ml



#45 AR-1268-5

R.T.: 10.080 min  
Delta R.T.: 0.004 min  
Response: 5323078  
Conc: 14.38 ng/ml

Instrument :  
ECD\_P  
ClientSampleId :  
ICVPP081925



#45 AR-1268-5

R.T.: 8.552 min  
Delta R.T.: 0.000 min  
Response: 27317589  
Conc: 8.71 ng/ml