

Data Path : Z:\pestpcbsrv\HPCHEM1\ECD\_P\Data\PP081925\  
 Data File : PP074522.D  
 Signal(s) : Signal #1: ECD1A.ch Signal #2: ECD2B.ch  
 Acq On : 19 Aug 2025 20:18  
 Operator : YP\AJ  
 Sample : AR1254ICV500  
 Misc :  
 ALS Vial : 34 Sample Multiplier: 1

Instrument :  
 ECD\_P  
 ClientSampleId :  
 ICVPP081925AR1254

Integration File signal 1: autoint1.e  
 Integration File signal 2: autoint2.e  
 Quant Time: Aug 20 06:24:34 2025  
 Quant Method : Z:\pestpcbsrv\HPCHEM1\ECD\_P\methods\PP081925.M  
 Quant Title : GC EXTRACTABLES  
 QLast Update : Wed Aug 20 06:20:44 2025  
 Response via : Initial Calibration  
 Integrator: ChemStation

Volume Inj. : 2 µl  
 Signal #1 Phase : ZB-MR1 Signal #2 Phase: ZB-MR2  
 Signal #1 Info : 30Mx0.32mmx 0.50µ Signal #2 Info : 30M x 0.32mm x 0.25µm

Compound	RT#1	RT#2	Resp#1	Resp#2	ng/ml	ng/ml
System Monitoring Compounds						
1) SA Tetrachlo...	4.657	3.800	56166806	231.3E6	45.900	47.840
2) SA Decachlor...	10.432	8.813	50817971	371.3E6	51.461	49.507
Target Compounds						
3) L1 AR-1016-1	5.807	4.894	750005	5643991	17.011	11.081 #
4) L1 AR-1016-2	5.832	4.960	959611	1349210	15.270	5.669 #
5) L1 AR-1016-3	5.894	5.082	1080182	1266128	24.050	9.181 #
6) L1 AR-1016-4	5.988	5.119	655902	70805439	18.643	506.465 #
7) L1 AR-1016-5	6.281	5.331	9369103	44864151	282.320	270.130
8) L2 AR-1221-1	0.000	4.013	0	659026	N.D.	10.652 #
9) L2 AR-1221-2	4.958	4.096	980393	2755427	73.398	60.944
10) L2 AR-1221-3	5.020	4.174	191319	933974	5.046	5.685
11) L3 AR-1232-1	5.020	4.174	191319	933974	6.299	7.291
12) L3 AR-1232-2	5.542	4.894	319890	5643991	20.300	24.349
13) L3 AR-1232-3	5.832	5.082	959611	1266128	31.418	21.081 #
14) L3 AR-1232-4	5.988	5.154	655902	35392594	37.981	480.177 #
15) L3 AR-1232-5	6.079	5.331	15193588	44864151	1170.452	722.639 #
16) L4 AR-1242-1	5.807	4.894	750005	5643991	19.595	13.382 #
17) L4 AR-1242-2	5.832	4.960	959611	1349210	16.990	6.737 #
18) L4 AR-1242-3	5.894	5.082	1080182	1266128	26.604	10.703 #
19) L4 AR-1242-4	5.988	5.154	655902	35392594	20.664	206.781 #
20) L4 AR-1242-5	6.722	5.682	9708916	232.6E6	269.164	1256.184 #
21) L5 AR-1248-1	5.807	4.894	750005	5643991	24.815	20.439
22) L5 AR-1248-2	6.079	5.119	15193588	70805439	352.552	400.584
23) L5 AR-1248-3	6.281	5.154	9369103	35392594	200.608	155.775
24) L5 AR-1248-4	6.657	5.331	39266544	44864151	713.927	205.779 #
25) L5 AR-1248-5	6.722	5.682	9708916	232.6E6	175.029	633.232 #
26) L6 AR-1254-1	6.657	5.682	39266544	232.6E6	673.879	487.928 #
27) L6 AR-1254-2	6.872	5.830	38555301	169.1E6	472.399	480.246
28) L6 AR-1254-3	7.233	6.231	41293274	315.3E6	462.896	508.643
29) L6 AR-1254-4	7.515	6.458	31170607	231.8E6	472.901	494.686
30) L6 AR-1254-5	7.931	6.875	39856792	247.9E6	479.711	505.396
31) L7 AR-1260-1	7.399	6.364	16874853	147.3E6	291.904	392.628 #
32) L7 AR-1260-2	7.650	6.548	19662272	138.3E6	285.302	261.464
33) L7 AR-1260-3	7.991	6.700	4976830	99337094	95.920	229.416 #
34) L7 AR-1260-4	8.220	7.171	14985236	7985079	234.905	20.932 #
35) L7 AR-1260-5	8.562	7.404	5440543	44562227	47.971	44.363
36) L8 AR-1262-1	8.220	6.938	14985236	35500592	194.573	50.195 #
37) L8 AR-1262-2	8.562	7.171	5440543	7985079	41.098	15.335 #
38) L8 AR-1262-3	8.897	7.700	4928010	1583894	50.693	3.397 #
39) L8 AR-1262-4	8.945	7.753	924526	24615396	12.273	29.951 #
40) L8 AR-1262-5	9.603	8.254	2877554	1035944	47.207	2.891 #
41) L9 AR-1268-1	8.897	7.700	4928010	1583894	30.412	1.123 #

Data Path : Z:\pestpcbsrv\HPCHEM1\ECD\_P\Data\PP081925\  
 Data File : PP074522.D  
 Signal(s) : Signal #1: ECD1A.ch Signal #2: ECD2B.ch  
 Acq On : 19 Aug 2025 20:18  
 Operator : YP\AJ  
 Sample : AR1254ICV500  
 Misc :  
 ALS Vial : 34 Sample Multiplier: 1

**Instrument :**  
 ECD\_P  
**ClientSampleId :**  
 ICVPP081925AR1254

Integration File signal 1: autoint1.e  
 Integration File signal 2: autoint2.e  
 Quant Time: Aug 20 06:24:34 2025  
 Quant Method : Z:\pestpcbsrv\HPCHEM1\ECD\_P\methods\PP081925.M  
 Quant Title : GC EXTRACTABLES  
 QLast Update : Wed Aug 20 06:20:44 2025  
 Response via : Initial Calibration  
 Integrator: ChemStation

Volume Inj. : 2 µl  
 Signal #1 Phase : ZB-MR1 Signal #2 Phase: ZB-MR2  
 Signal #1 Info : 30Mx0.32mmx 0.50µ Signal #2 Info : 30M x 0.32mm x 0.25µm

	Compound	RT#1	RT#2	Resp#1	Resp#2	ng/ml	ng/ml
42)	L9 AR-1268-2	8.945	7.753	924526	24615396	6.301	18.054 #
43)	L9 AR-1268-3	9.216	7.963	336103	717631	2.720	0.688 #
44)	L9 AR-1268-4	9.603f	8.254	2877554	1035944	42.781	2.704 #
45)	L9 AR-1268-5	10.080	8.556	430496	2014167	1.163	0.642 #

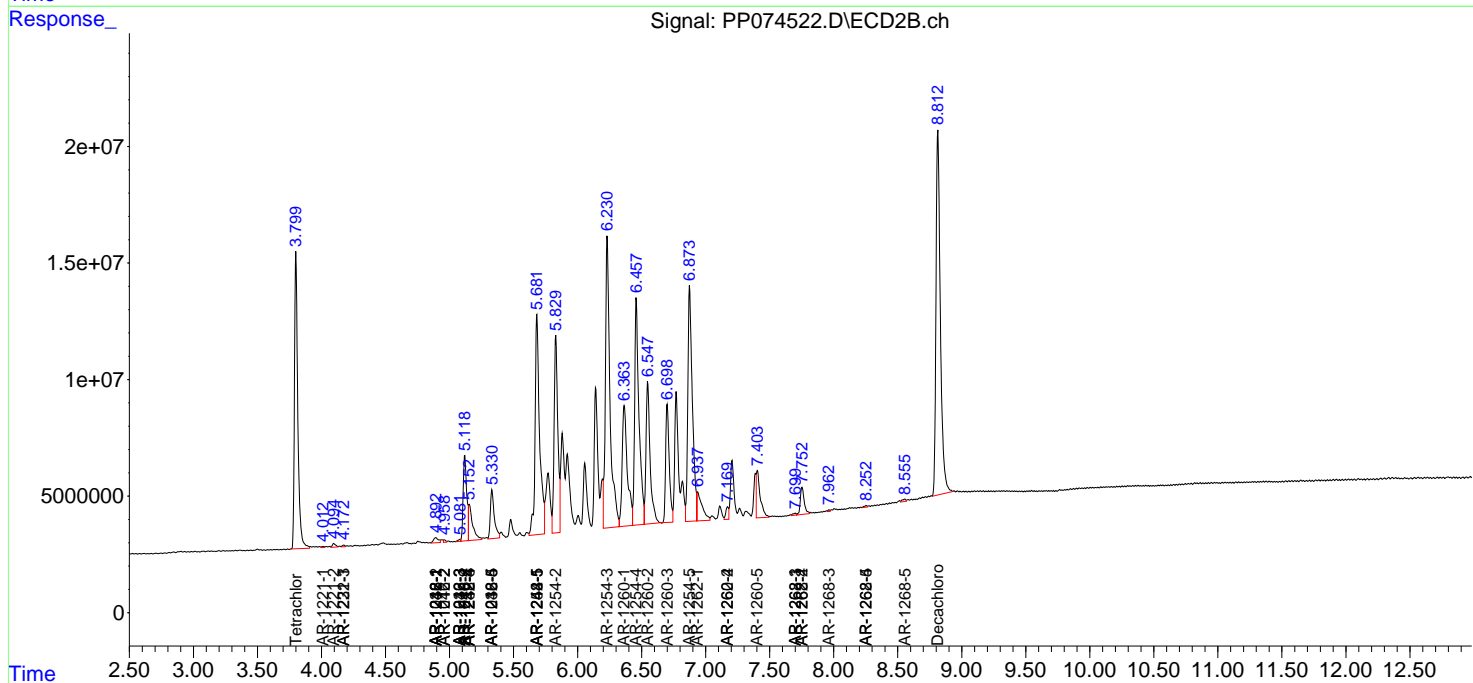
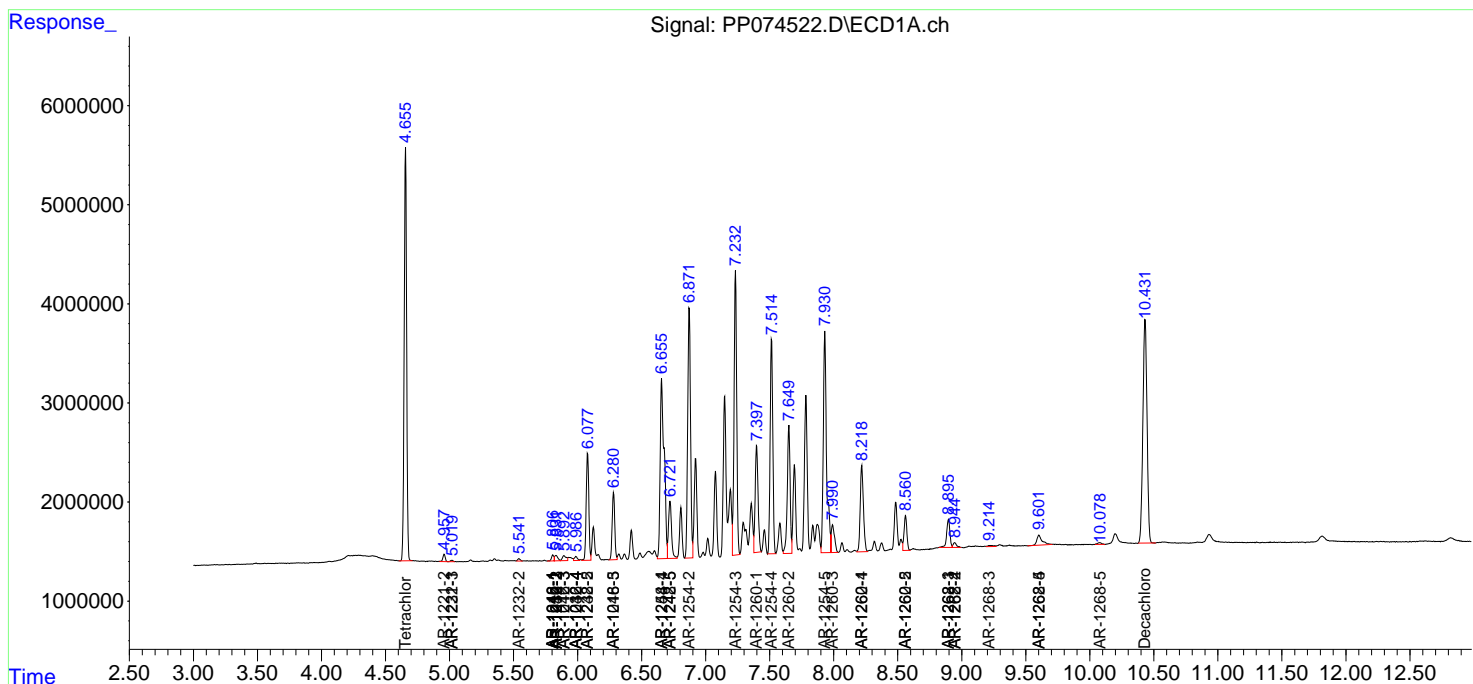
(f)=RT Delta > 1/2 Window (#)=Amounts differ by > 25% (m)=manual int.

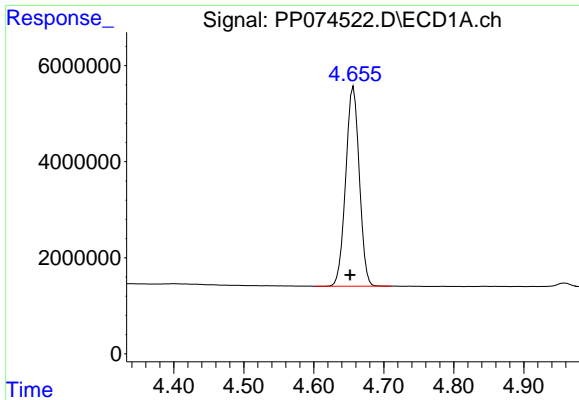
Data Path : Z:\pestpcbsrv\HPCHEM1\ECD\_P\Data\PP081925\  
 Data File : PP074522.D  
 Signal(s) : Signal #1: ECD1A.ch Signal #2: ECD2B.ch  
 Acq On : 19 Aug 2025 20:18  
 Operator : YP\AJ  
 Sample : AR1254ICV500  
 Misc :  
 ALS Vial : 34 Sample Multiplier: 1

Instrument :  
 ECD\_P  
 ClientSampleId :  
 ICVPP081925AR1254

Integration File signal 1: autoint1.e  
 Integration File signal 2: autoint2.e  
 Quant Time: Aug 20 06:24:34 2025  
 Quant Method : Z:\pestpcbsrv\HPCHEM1\ECD\_P\methods\PP081925.M  
 Quant Title : GC EXTRACTABLES  
 QLast Update : Wed Aug 20 06:20:44 2025  
 Response via : Initial Calibration  
 Integrator: ChemStation

Volume Inj. : 2 µl  
 Signal #1 Phase : ZB-MR1 Signal #2 Phase: ZB-MR2  
 Signal #1 Info : 30Mx0.32mmx 0.50µ Signal #2 Info : 30M x 0.32mm x 0.25µm

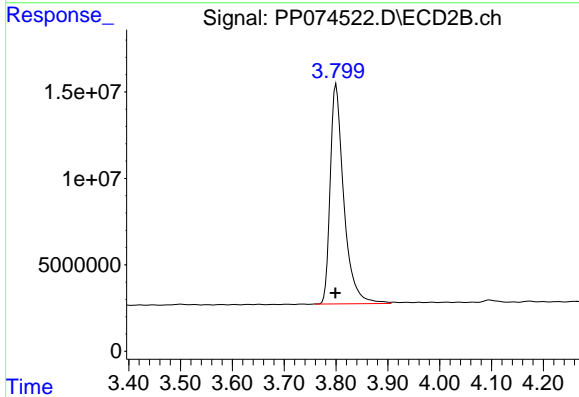




#1 Tetrachloro-m-xylene

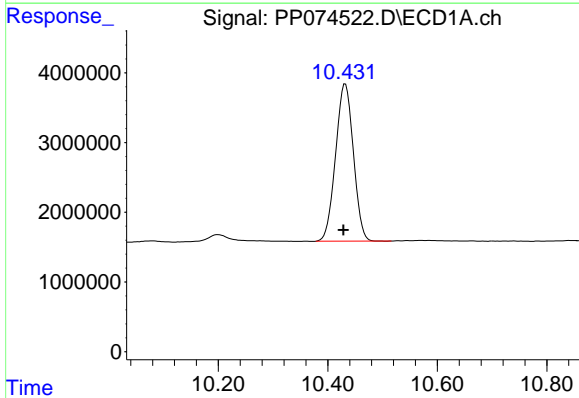
R.T.: 4.657 min  
 Delta R.T.: 0.005 min  
 Response: 56166806  
 Conc: 45.90 ng/ml

Instrument :  
 ECD\_P  
 ClientSampleId :  
 ICVPP081925AR1254



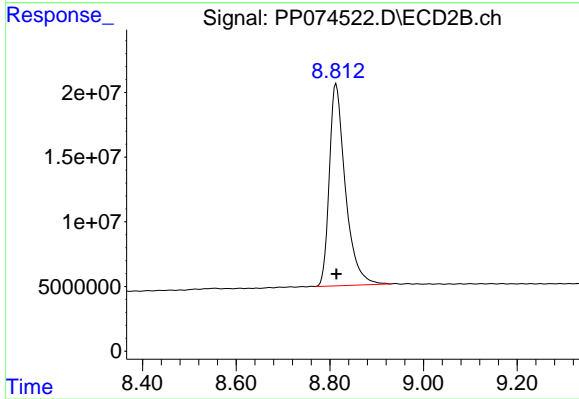
#1 Tetrachloro-m-xylene

R.T.: 3.800 min  
 Delta R.T.: 0.001 min  
 Response: 231327828  
 Conc: 47.84 ng/ml



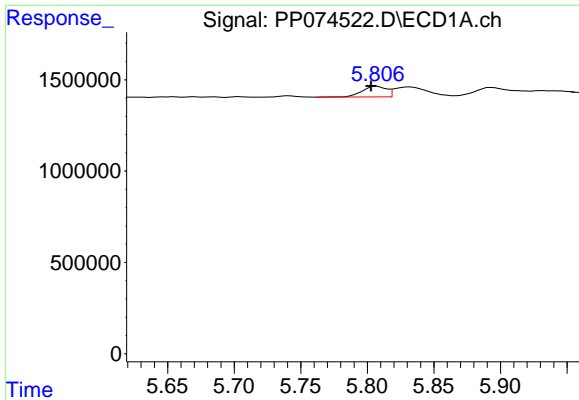
#2 Decachlorobiphenyl

R.T.: 10.432 min  
 Delta R.T.: 0.004 min  
 Response: 50817971  
 Conc: 51.46 ng/ml



#2 Decachlorobiphenyl

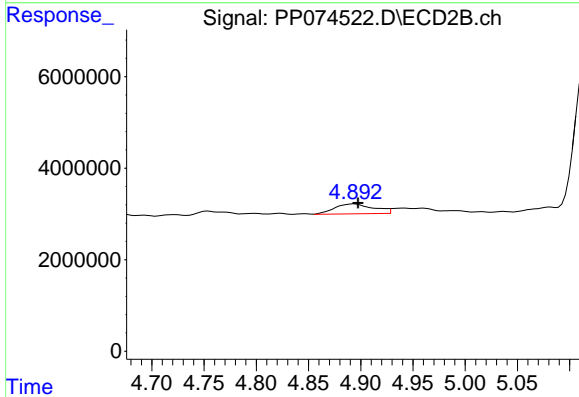
R.T.: 8.813 min  
 Delta R.T.: 0.000 min  
 Response: 371262857  
 Conc: 49.51 ng/ml



#3 AR-1016-1

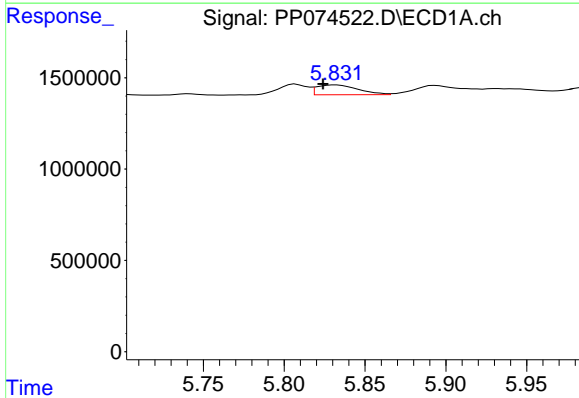
R.T.: 5.807 min  
 Delta R.T.: 0.005 min  
 Response: 750005  
 Conc: 17.01 ng/ml

Instrument :  
 ECD\_P  
 ClientSampleId :  
 ICVPP081925AR1254



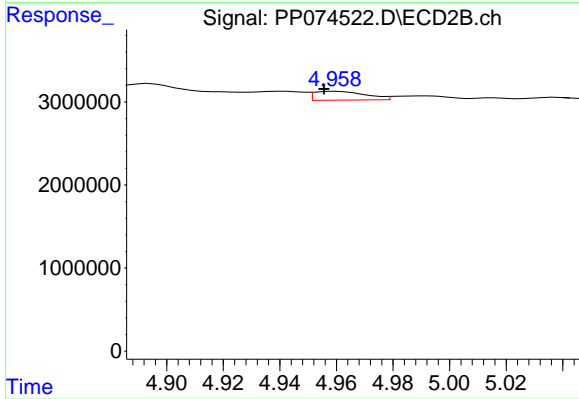
#3 AR-1016-1

R.T.: 4.894 min  
 Delta R.T.: -0.004 min  
 Response: 5643991  
 Conc: 11.08 ng/ml



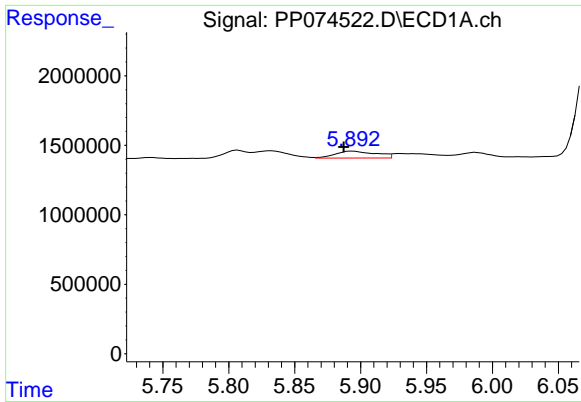
#4 AR-1016-2

R.T.: 5.832 min  
 Delta R.T.: 0.008 min  
 Response: 959611  
 Conc: 15.27 ng/ml



#4 AR-1016-2

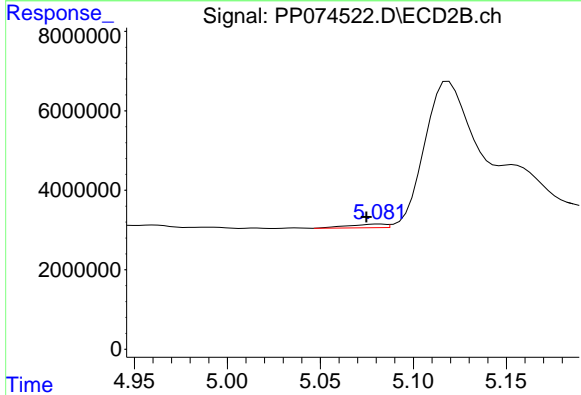
R.T.: 4.960 min  
 Delta R.T.: 0.004 min  
 Response: 1349210  
 Conc: 5.67 ng/ml



#5 AR-1016-3

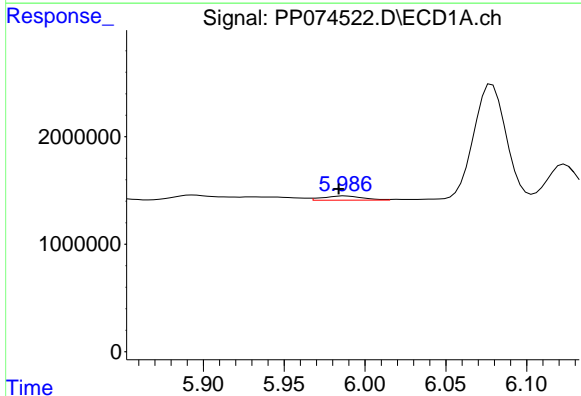
R.T.: 5.894 min  
 Delta R.T.: 0.007 min  
 Response: 1080182  
 Conc: 24.05 ng/ml

Instrument :  
 ECD\_P  
 ClientSampleId :  
 ICVPP081925AR1254



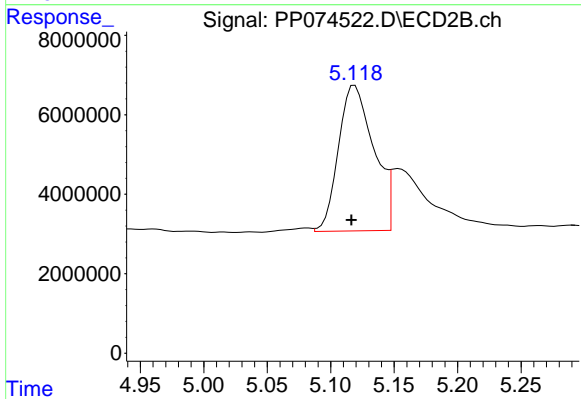
#5 AR-1016-3

R.T.: 5.082 min  
 Delta R.T.: 0.007 min  
 Response: 1266128  
 Conc: 9.18 ng/ml



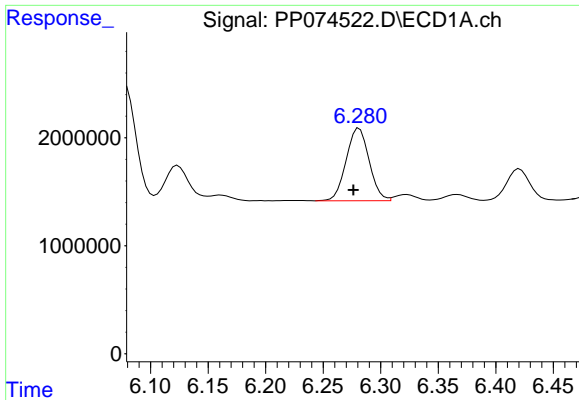
#6 AR-1016-4

R.T.: 5.988 min  
 Delta R.T.: 0.004 min  
 Response: 655902  
 Conc: 18.64 ng/ml



#6 AR-1016-4

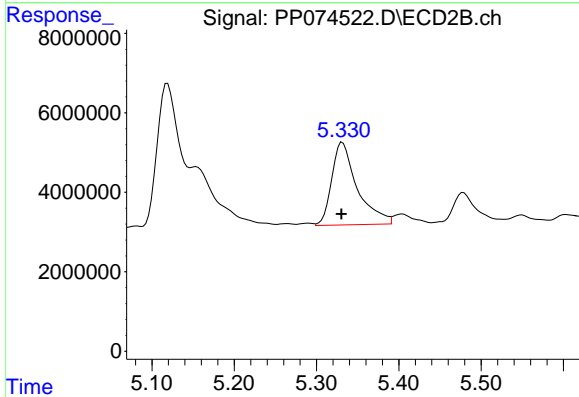
R.T.: 5.119 min  
 Delta R.T.: 0.003 min  
 Response: 70805439  
 Conc: 506.46 ng/ml



#7 AR-1016-5

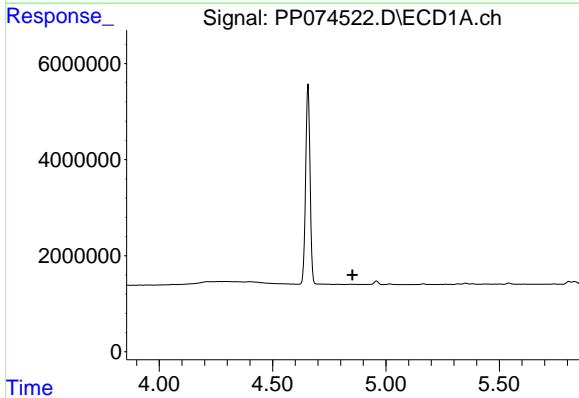
R.T.: 6.281 min  
 Delta R.T.: 0.005 min  
 Response: 9369103  
 Conc: 282.32 ng/ml

Instrument :  
 ECD\_P  
 ClientSampleId :  
 ICVPP081925AR1254



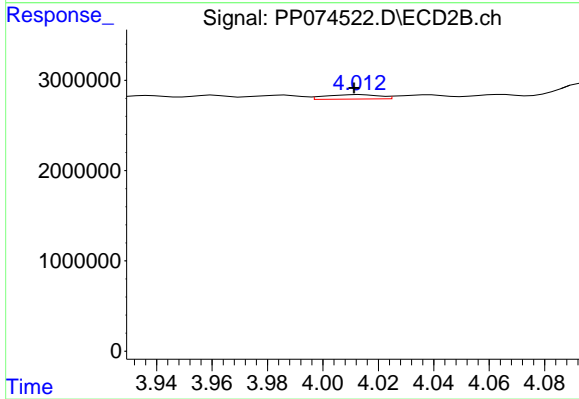
#7 AR-1016-5

R.T.: 5.331 min  
 Delta R.T.: 0.001 min  
 Response: 44864151  
 Conc: 270.13 ng/ml



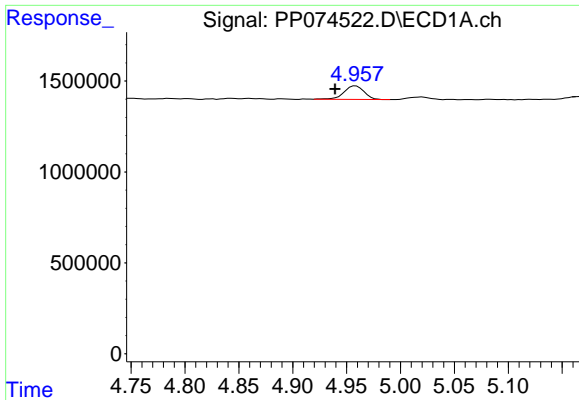
#8 AR-1221-1

R.T.: 0.000 min  
 Exp R.T. : 4.853 min  
 Response: 0  
 Conc: N.D.



#8 AR-1221-1

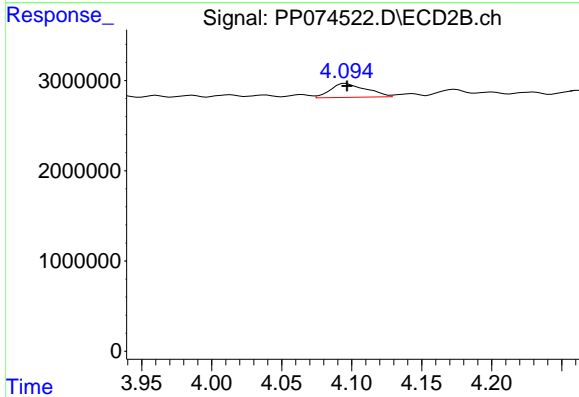
R.T.: 4.013 min  
 Delta R.T.: 0.002 min  
 Response: 659026  
 Conc: 10.65 ng/ml



#9 AR-1221-2

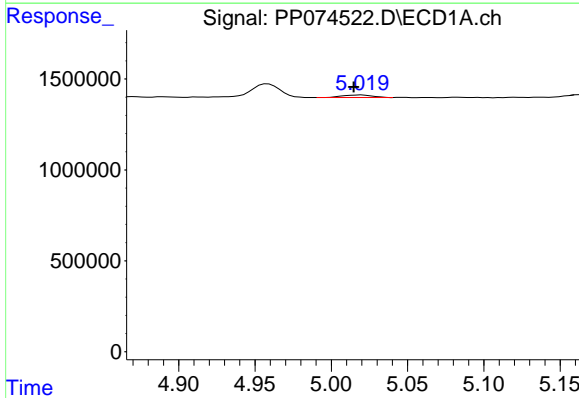
R.T.: 4.958 min  
 Delta R.T.: 0.019 min  
 Response: 980393  
 Conc: 73.40 ng/ml

Instrument :  
 ECD\_P  
 ClientSampleId :  
 ICVPP081925AR1254



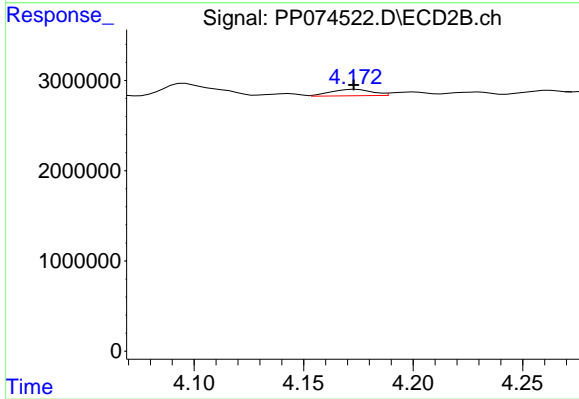
#9 AR-1221-2

R.T.: 4.096 min  
 Delta R.T.: 0.000 min  
 Response: 2755427  
 Conc: 60.94 ng/ml



#10 AR-1221-3

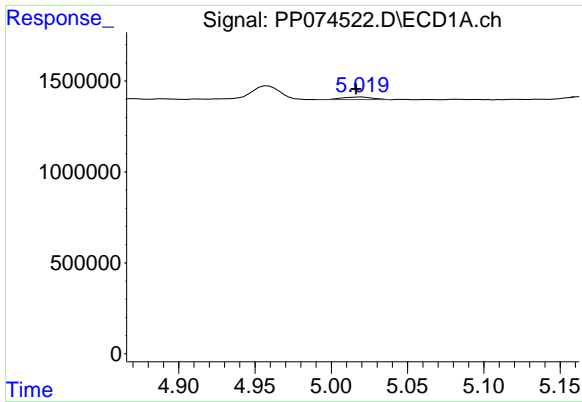
R.T.: 5.020 min  
 Delta R.T.: 0.005 min  
 Response: 191319  
 Conc: 5.05 ng/ml



#10 AR-1221-3

R.T.: 4.174 min  
 Delta R.T.: 0.001 min  
 Response: 933974  
 Conc: 5.68 ng/ml

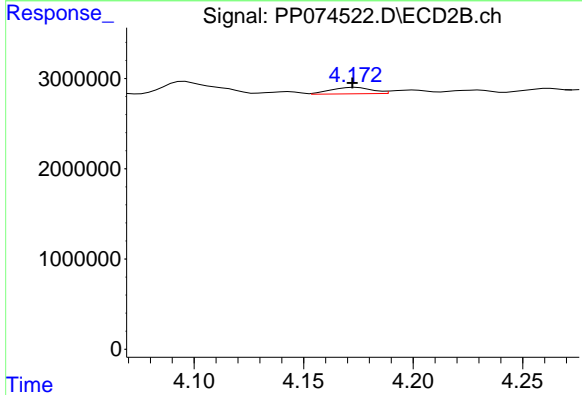




#11 AR-1232-1

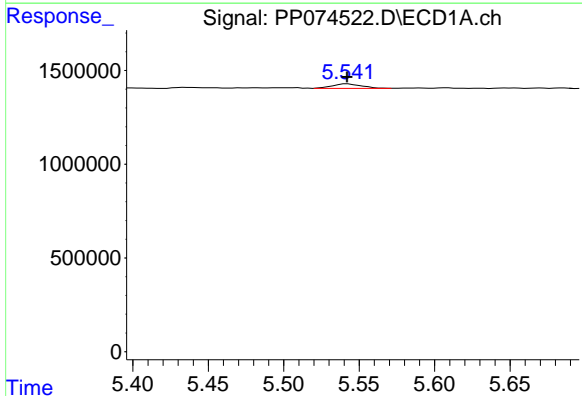
R.T.: 5.020 min  
 Delta R.T.: 0.004 min  
 Response: 191319  
 Conc: 6.30 ng/ml

Instrument :  
 ECD\_P  
 ClientSampleId :  
 ICVPP081925AR1254



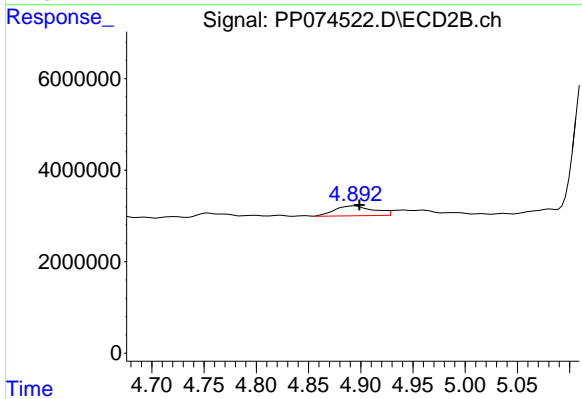
#11 AR-1232-1

R.T.: 4.174 min  
 Delta R.T.: 0.002 min  
 Response: 933974  
 Conc: 7.29 ng/ml



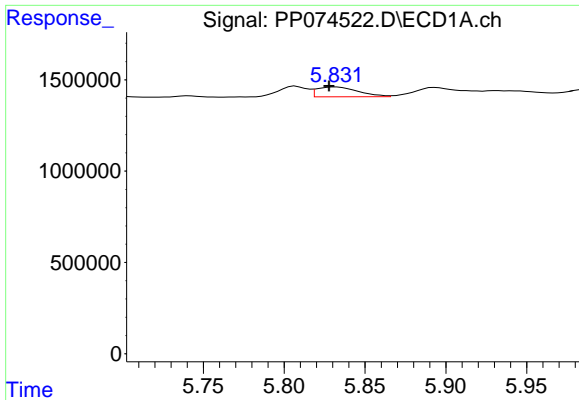
#12 AR-1232-2

R.T.: 5.542 min  
 Delta R.T.: 0.000 min  
 Response: 319890  
 Conc: 20.30 ng/ml



#12 AR-1232-2

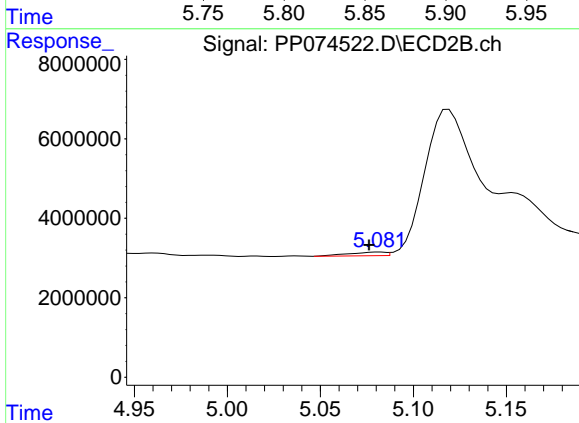
R.T.: 4.894 min  
 Delta R.T.: -0.005 min  
 Response: 5643991  
 Conc: 24.35 ng/ml



#13 AR-1232-3

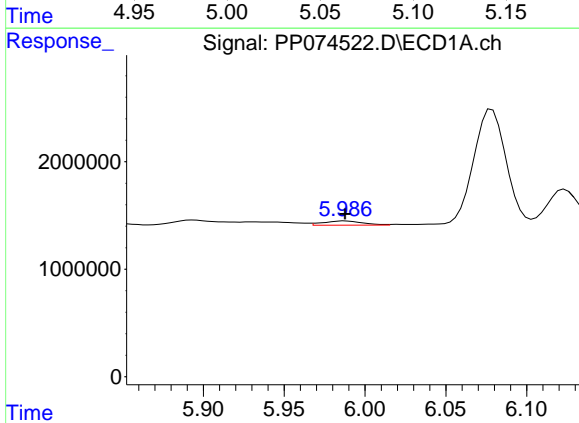
R.T.: 5.832 min  
 Delta R.T.: 0.004 min  
 Response: 959611  
 Conc: 31.42 ng/ml

Instrument :  
 ECD\_P  
 ClientSampleId :  
 ICVPP081925AR1254



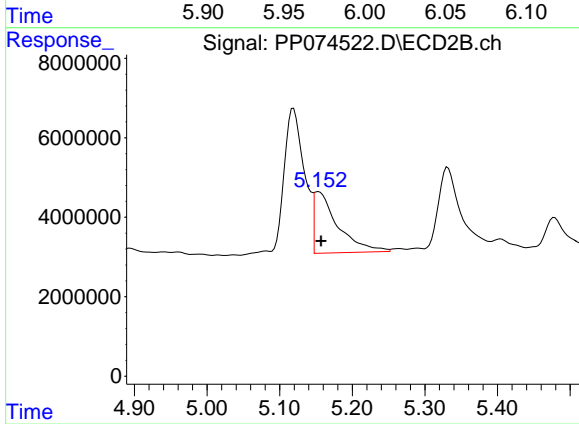
#13 AR-1232-3

R.T.: 5.082 min  
 Delta R.T.: 0.006 min  
 Response: 1266128  
 Conc: 21.08 ng/ml



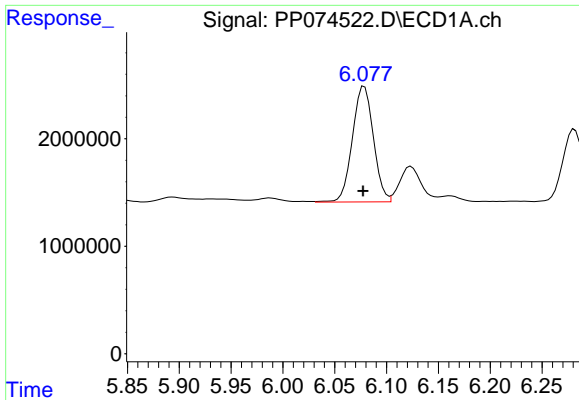
#14 AR-1232-4

R.T.: 5.988 min  
 Delta R.T.: 0.000 min  
 Response: 655902  
 Conc: 37.98 ng/ml



#14 AR-1232-4

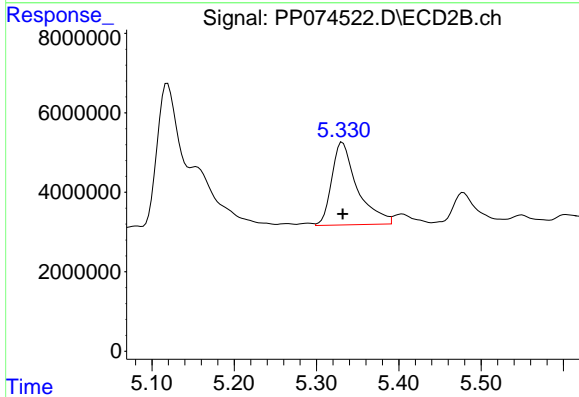
R.T.: 5.154 min  
 Delta R.T.: -0.004 min  
 Response: 35392594  
 Conc: 480.18 ng/ml



#15 AR-1232-5

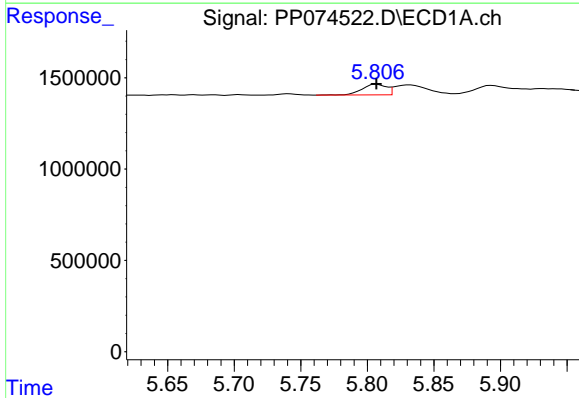
R.T.: 6.079 min  
 Delta R.T.: 0.001 min  
 Response: 15193588  
 Conc: 1170.45 ng/ml

Instrument :  
 ECD\_P  
 ClientSampleId :  
 ICVPP081925AR1254



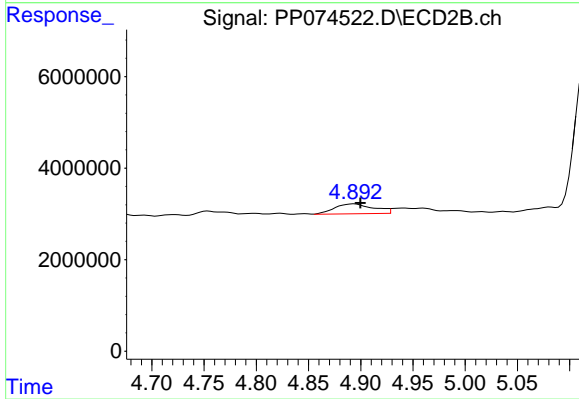
#15 AR-1232-5

R.T.: 5.331 min  
 Delta R.T.: 0.000 min  
 Response: 44864151  
 Conc: 722.64 ng/ml



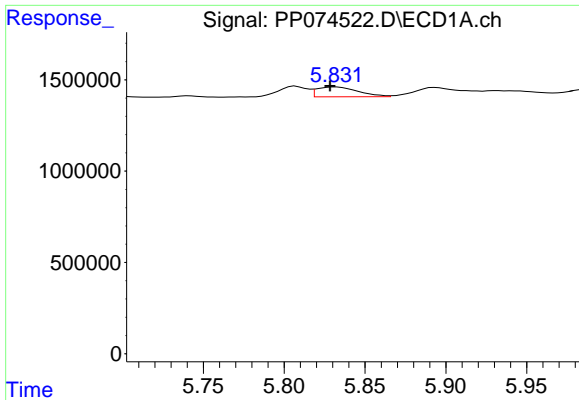
#16 AR-1242-1

R.T.: 5.807 min  
 Delta R.T.: 0.000 min  
 Response: 750005  
 Conc: 19.60 ng/ml



#16 AR-1242-1

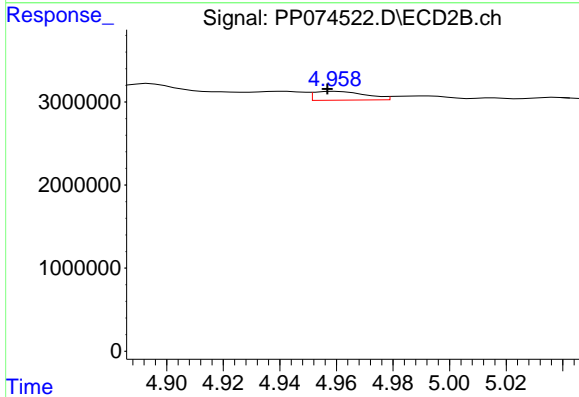
R.T.: 4.894 min  
 Delta R.T.: -0.006 min  
 Response: 5643991  
 Conc: 13.38 ng/ml



#17 AR-1242-2

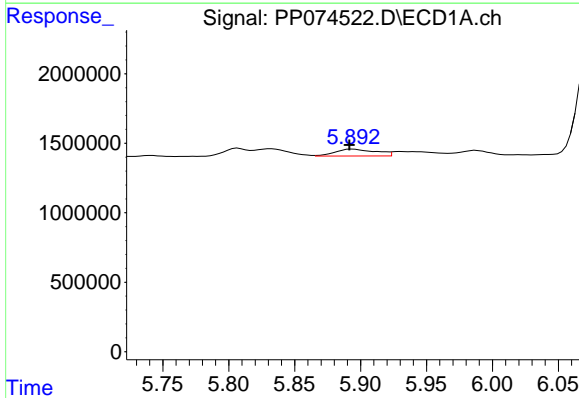
R.T.: 5.832 min  
 Delta R.T.: 0.004 min  
 Response: 959611  
 Conc: 16.99 ng/ml

Instrument :  
 ECD\_P  
 ClientSampleId :  
 ICVPP081925AR1254



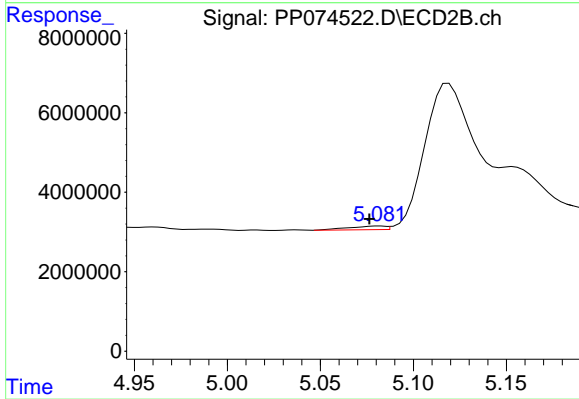
#17 AR-1242-2

R.T.: 4.960 min  
 Delta R.T.: 0.003 min  
 Response: 1349210  
 Conc: 6.74 ng/ml



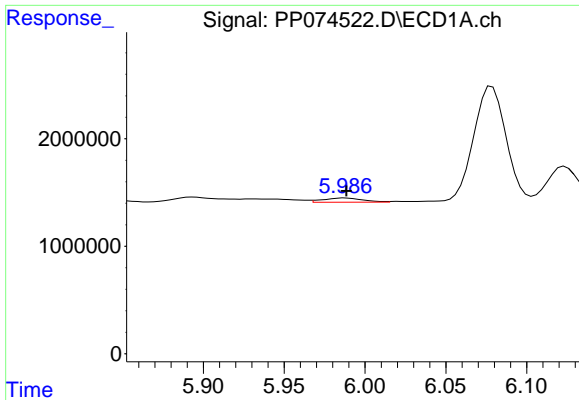
#18 AR-1242-3

R.T.: 5.894 min  
 Delta R.T.: 0.002 min  
 Response: 1080182  
 Conc: 26.60 ng/ml



#18 AR-1242-3

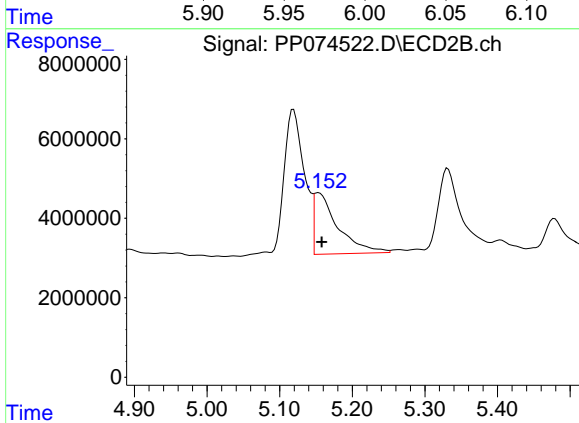
R.T.: 5.082 min  
 Delta R.T.: 0.005 min  
 Response: 1266128  
 Conc: 10.70 ng/ml



#19 AR-1242-4

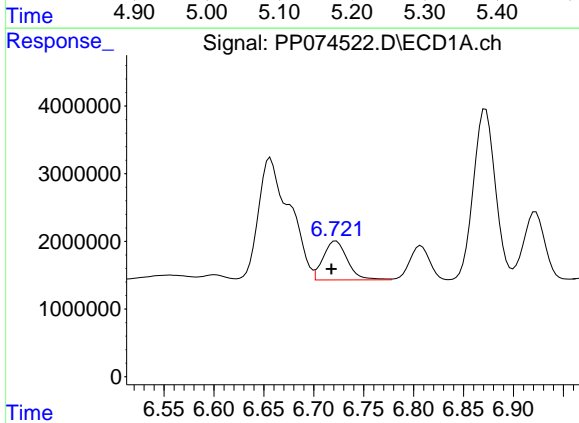
R.T.: 5.988 min  
 Delta R.T.: 0.000 min  
 Response: 655902  
 Conc: 20.66 ng/ml

Instrument :  
 ECD\_P  
 ClientSampleId :  
 ICVPP081925AR1254



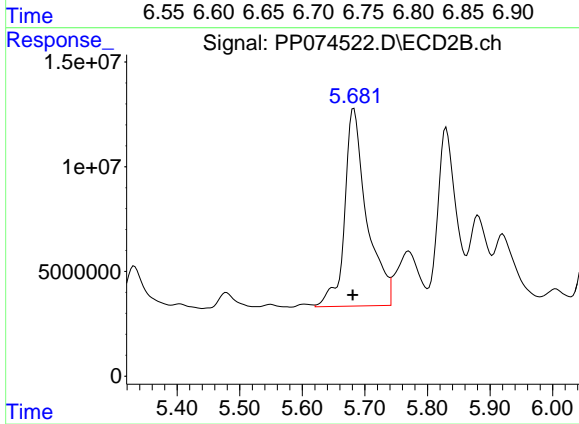
#19 AR-1242-4

R.T.: 5.154 min  
 Delta R.T.: -0.004 min  
 Response: 35392594  
 Conc: 206.78 ng/ml



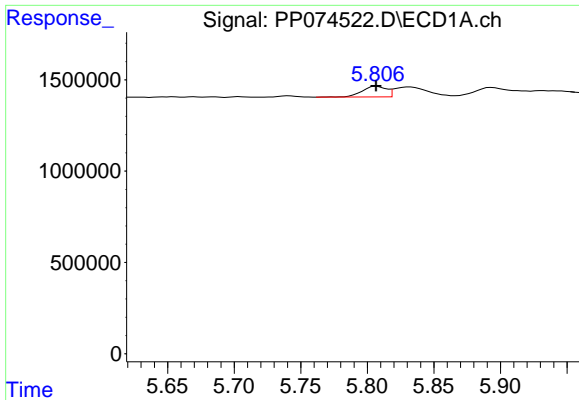
#20 AR-1242-5

R.T.: 6.722 min  
 Delta R.T.: 0.005 min  
 Response: 9708916  
 Conc: 269.16 ng/ml



#20 AR-1242-5

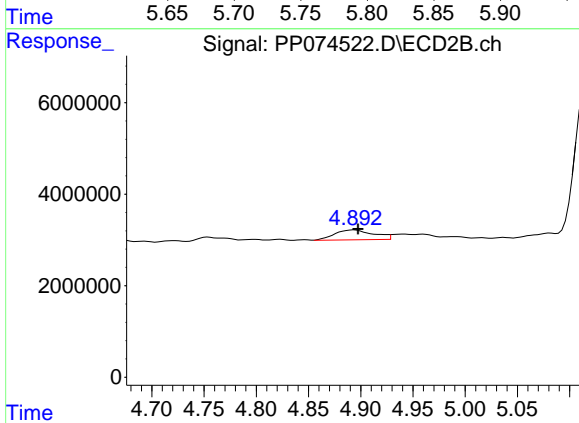
R.T.: 5.682 min  
 Delta R.T.: 0.002 min  
 Response: 232600192  
 Conc: 1256.18 ng/ml



#21 AR-1248-1

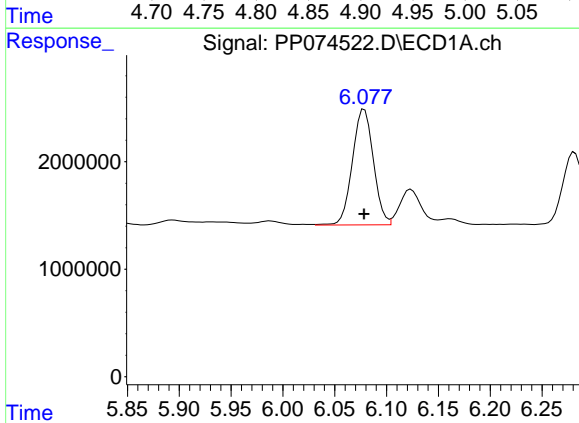
R.T.: 5.807 min  
 Delta R.T.: 0.000 min  
 Response: 750005  
 Conc: 24.81 ng/ml

Instrument :  
 ECD\_P  
 ClientSampleId :  
 ICVPP081925AR1254



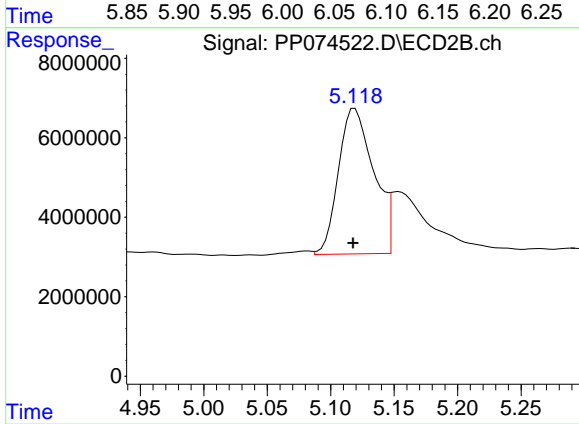
#21 AR-1248-1

R.T.: 4.894 min  
 Delta R.T.: -0.004 min  
 Response: 5643991  
 Conc: 20.44 ng/ml



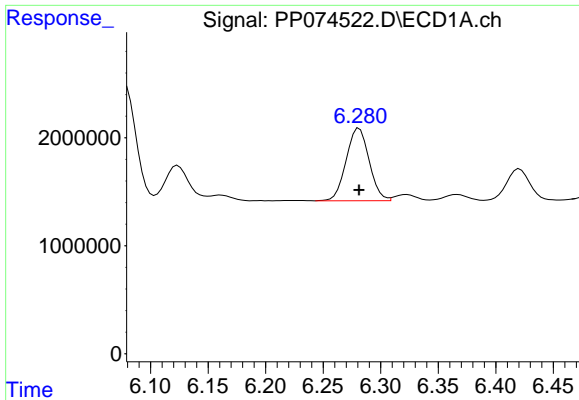
#22 AR-1248-2

R.T.: 6.079 min  
 Delta R.T.: 0.000 min  
 Response: 15193588  
 Conc: 352.55 ng/ml



#22 AR-1248-2

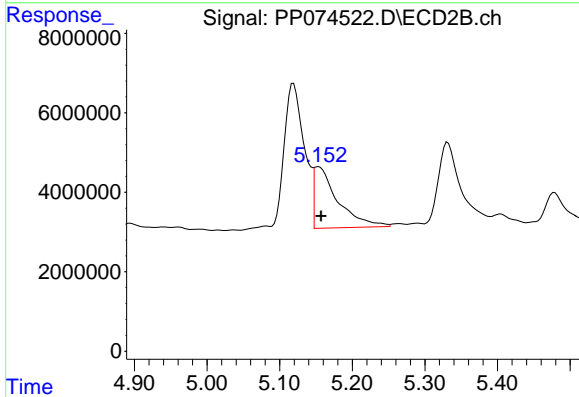
R.T.: 5.119 min  
 Delta R.T.: 0.001 min  
 Response: 70805439  
 Conc: 400.58 ng/ml



#23 AR-1248-3

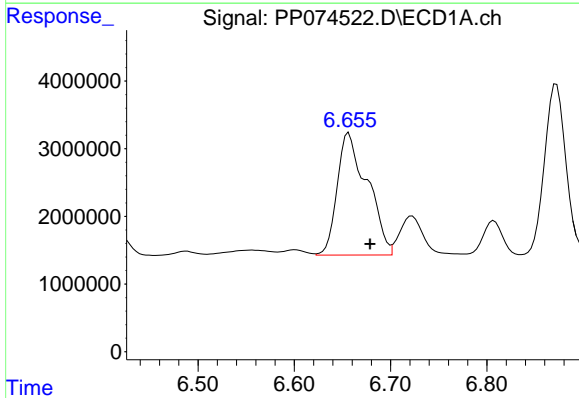
R.T.: 6.281 min  
 Delta R.T.: 0.000 min  
 Response: 9369103  
 Conc: 200.61 ng/ml

Instrument :  
 ECD\_P  
 ClientSampleId :  
 ICVPP081925AR1254



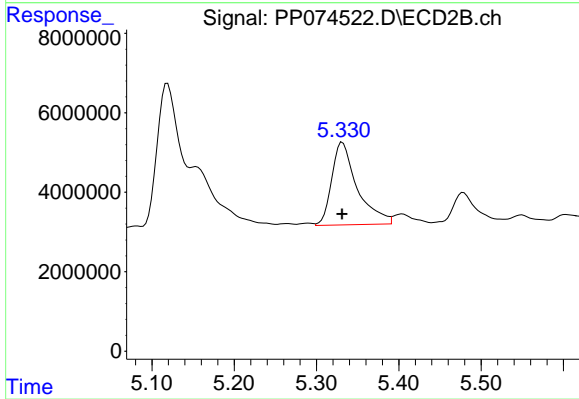
#23 AR-1248-3

R.T.: 5.154 min  
 Delta R.T.: -0.003 min  
 Response: 35392594  
 Conc: 155.77 ng/ml



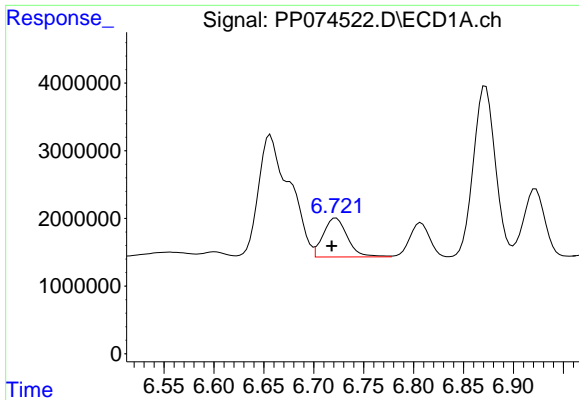
#24 AR-1248-4

R.T.: 6.657 min  
 Delta R.T.: -0.022 min  
 Response: 39266544  
 Conc: 713.93 ng/ml



#24 AR-1248-4

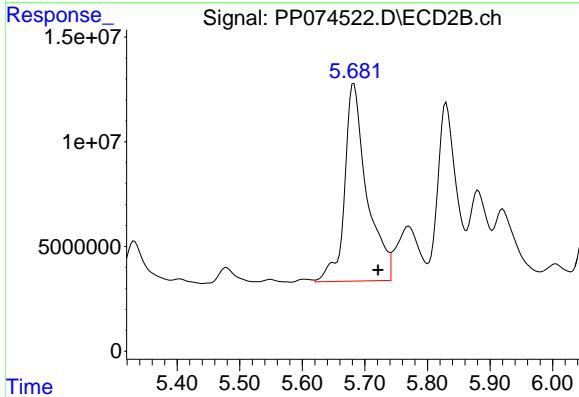
R.T.: 5.331 min  
 Delta R.T.: 0.000 min  
 Response: 44864151  
 Conc: 205.78 ng/ml



#25 AR-1248-5

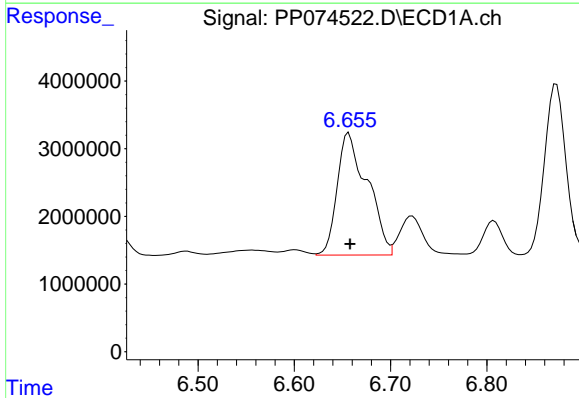
R.T.: 6.722 min  
 Delta R.T.: 0.004 min  
 Response: 9708916  
 Conc: 175.03 ng/ml

Instrument :  
 ECD\_P  
 ClientSampleId :  
 ICVPP081925AR1254



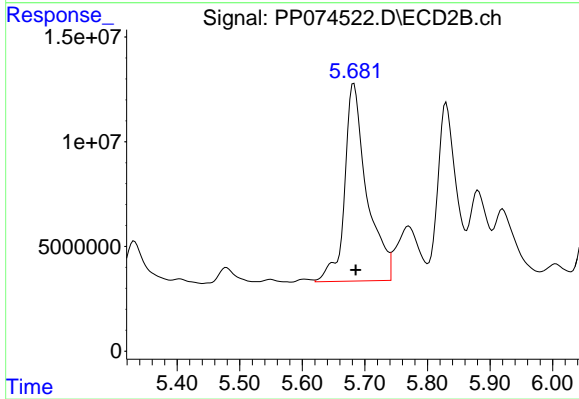
#25 AR-1248-5

R.T.: 5.682 min  
 Delta R.T.: -0.038 min  
 Response: 232600192  
 Conc: 633.23 ng/ml



#26 AR-1254-1

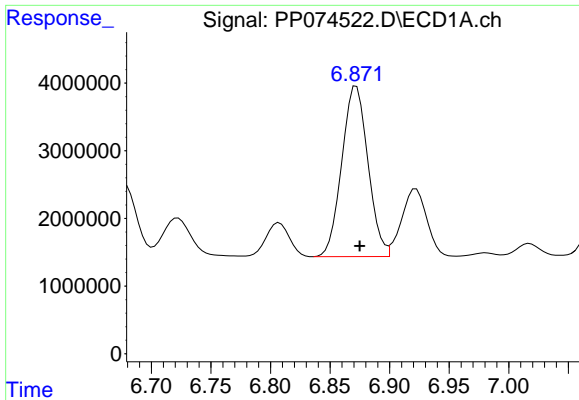
R.T.: 6.657 min  
 Delta R.T.: -0.001 min  
 Response: 39266544  
 Conc: 673.88 ng/ml



#26 AR-1254-1

R.T.: 5.682 min  
 Delta R.T.: -0.003 min  
 Response: 232600192  
 Conc: 487.93 ng/ml

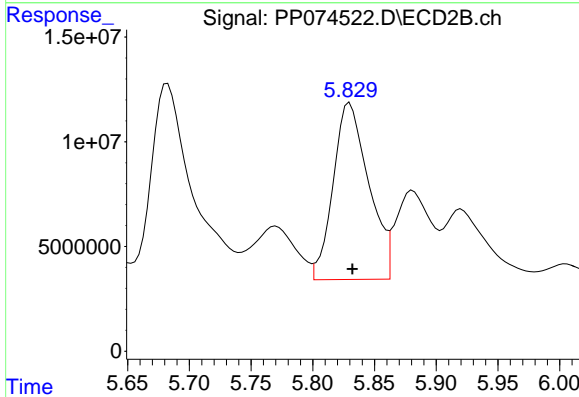




#27 AR-1254-2

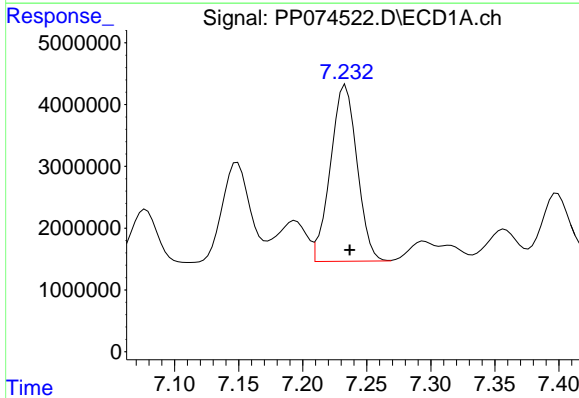
R.T.: 6.872 min  
 Delta R.T.: -0.003 min  
 Response: 38555301  
 Conc: 472.40 ng/ml

Instrument :  
 ECD\_P  
 ClientSampleId :  
 ICVPP081925AR1254



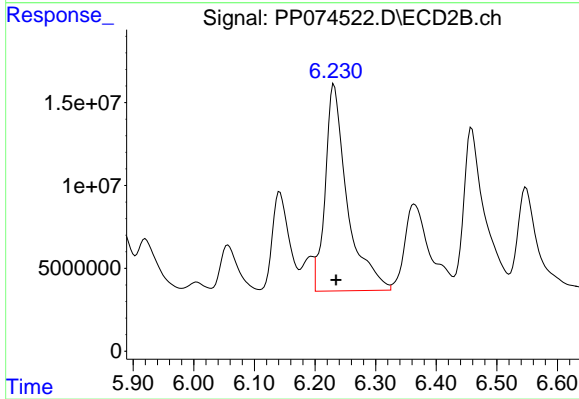
#27 AR-1254-2

R.T.: 5.830 min  
 Delta R.T.: -0.002 min  
 Response: 169110333  
 Conc: 480.25 ng/ml



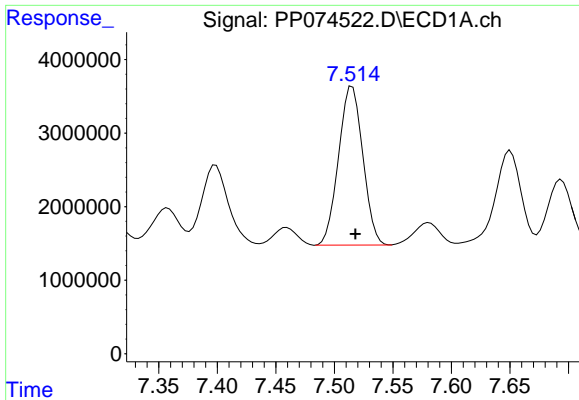
#28 AR-1254-3

R.T.: 7.233 min  
 Delta R.T.: -0.003 min  
 Response: 41293274  
 Conc: 462.90 ng/ml



#28 AR-1254-3

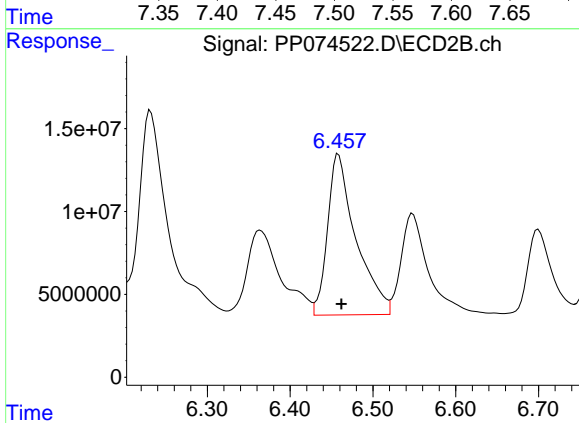
R.T.: 6.231 min  
 Delta R.T.: -0.003 min  
 Response: 315259795  
 Conc: 508.64 ng/ml



#29 AR-1254-4

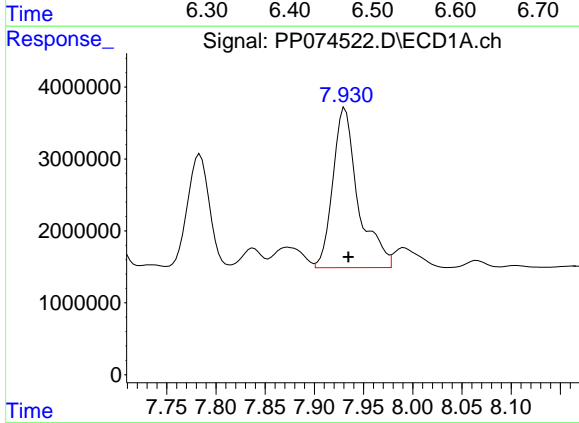
R.T.: 7.515 min  
 Delta R.T.: -0.003 min  
 Response: 31170607  
 Conc: 472.90 ng/ml

Instrument :  
 ECD\_P  
 ClientSampleId :  
 ICVPP081925AR1254



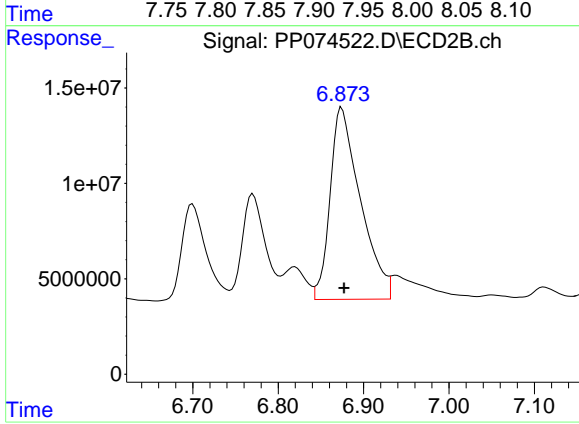
#29 AR-1254-4

R.T.: 6.458 min  
 Delta R.T.: -0.003 min  
 Response: 231822957  
 Conc: 494.69 ng/ml



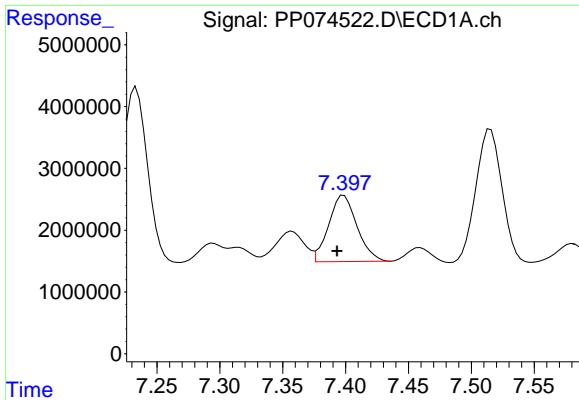
#30 AR-1254-5

R.T.: 7.931 min  
 Delta R.T.: -0.003 min  
 Response: 39856792  
 Conc: 479.71 ng/ml



#30 AR-1254-5

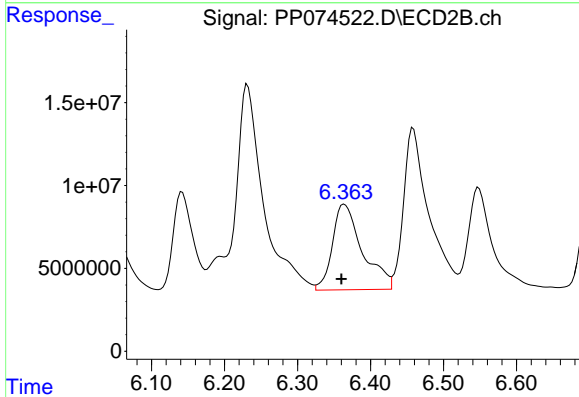
R.T.: 6.875 min  
 Delta R.T.: -0.002 min  
 Response: 247897423  
 Conc: 505.40 ng/ml



#31 AR-1260-1

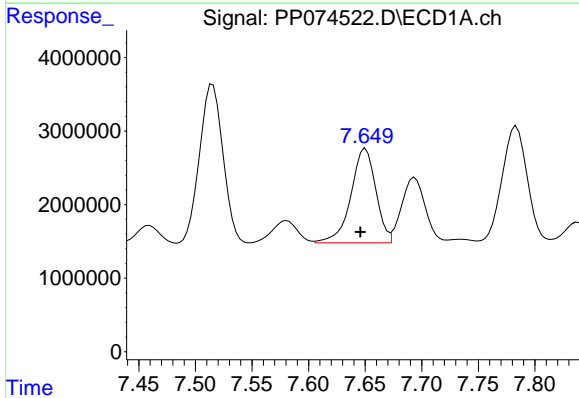
R.T.: 7.399 min  
 Delta R.T.: 0.005 min  
 Response: 16874853  
 Conc: 291.90 ng/ml

Instrument :  
 ECD\_P  
 ClientSampleId :  
 ICVPP081925AR1254



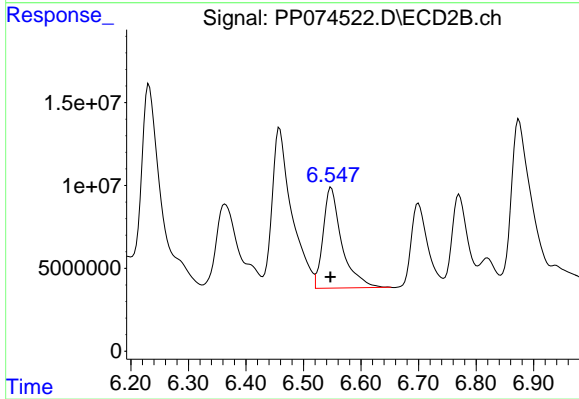
#31 AR-1260-1

R.T.: 6.364 min  
 Delta R.T.: 0.004 min  
 Response: 147323268  
 Conc: 392.63 ng/ml



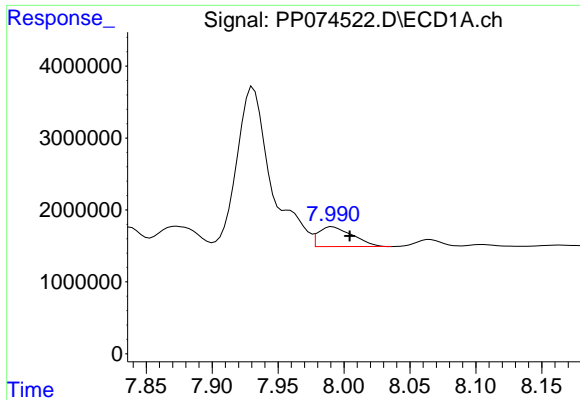
#32 AR-1260-2

R.T.: 7.650 min  
 Delta R.T.: 0.004 min  
 Response: 19662272  
 Conc: 285.30 ng/ml



#32 AR-1260-2

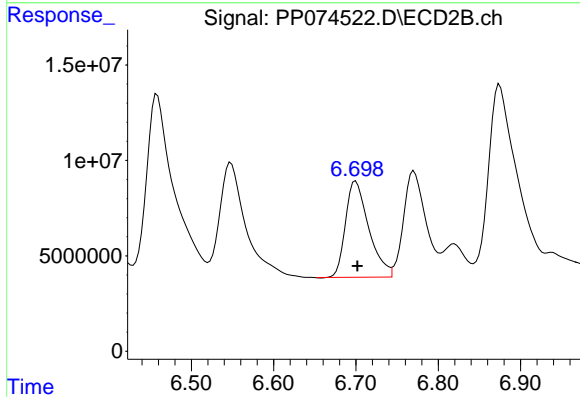
R.T.: 6.548 min  
 Delta R.T.: 0.001 min  
 Response: 138266055  
 Conc: 261.46 ng/ml



#33 AR-1260-3

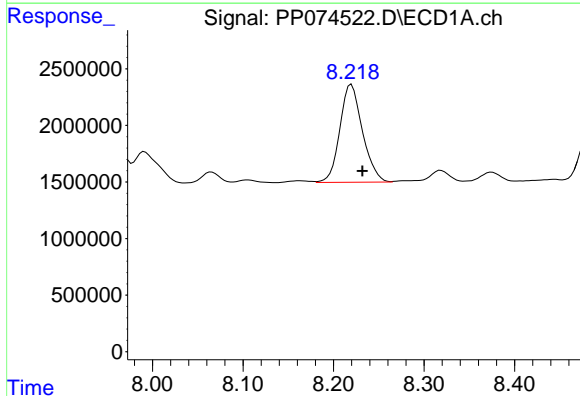
R.T.: 7.991 min  
 Delta R.T.: -0.013 min  
 Response: 4976830  
 Conc: 95.92 ng/ml

Instrument :  
 ECD\_P  
 ClientSampleId :  
 ICVPP081925AR1254



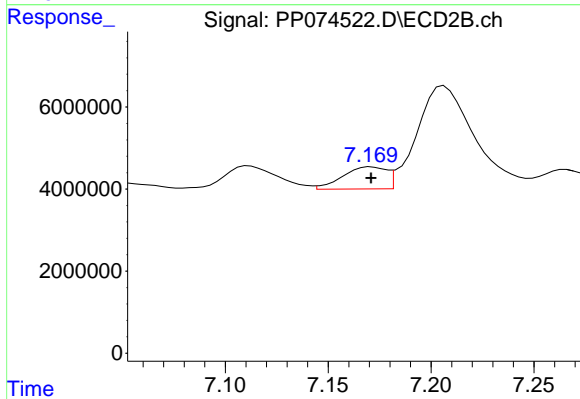
#33 AR-1260-3

R.T.: 6.700 min  
 Delta R.T.: -0.002 min  
 Response: 99337094  
 Conc: 229.42 ng/ml



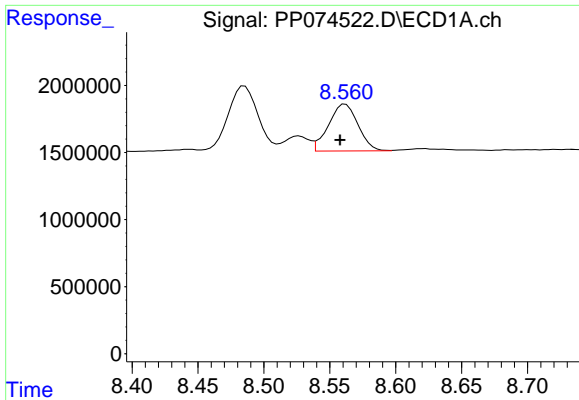
#34 AR-1260-4

R.T.: 8.220 min  
 Delta R.T.: -0.012 min  
 Response: 14985236  
 Conc: 234.90 ng/ml



#34 AR-1260-4

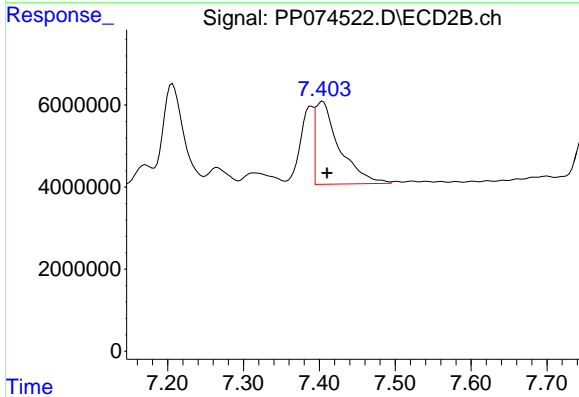
R.T.: 7.171 min  
 Delta R.T.: 0.000 min  
 Response: 7985079  
 Conc: 20.93 ng/ml



#35 AR-1260-5

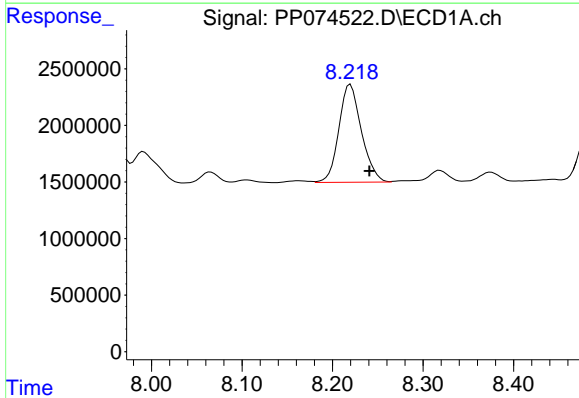
R.T.: 8.562 min  
 Delta R.T.: 0.004 min  
 Response: 5440543  
 Conc: 47.97 ng/ml

Instrument :  
 ECD\_P  
 ClientSampleId :  
 ICVPP081925AR1254



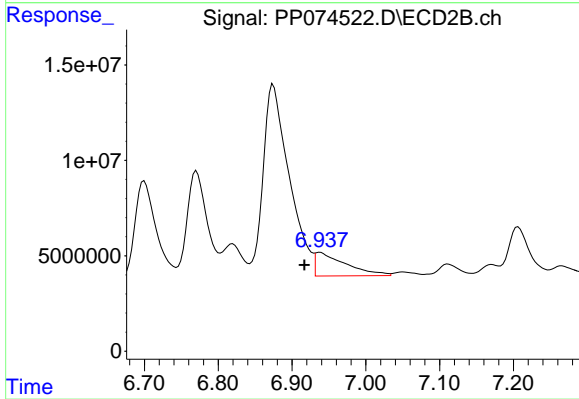
#35 AR-1260-5

R.T.: 7.404 min  
 Delta R.T.: -0.006 min  
 Response: 44562227  
 Conc: 44.36 ng/ml



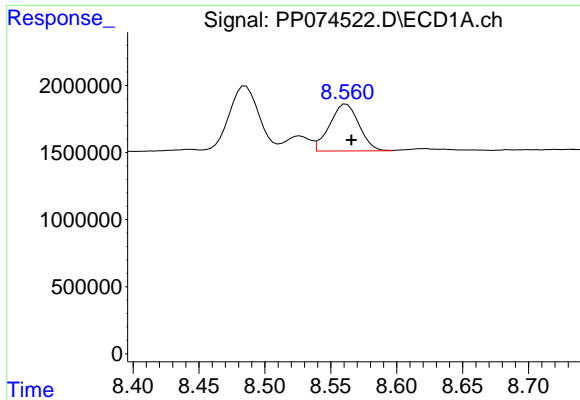
#36 AR-1262-1

R.T.: 8.220 min  
 Delta R.T.: -0.021 min  
 Response: 14985236  
 Conc: 194.57 ng/ml



#36 AR-1262-1

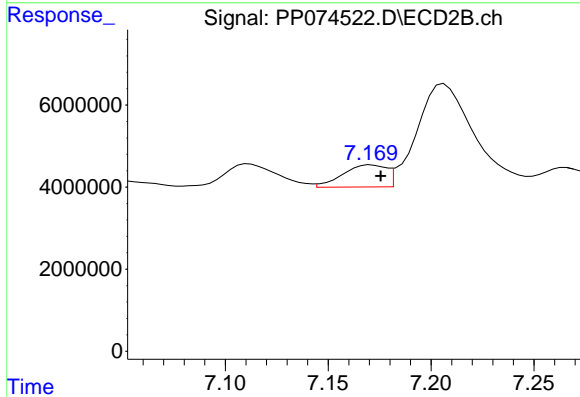
R.T.: 6.938 min  
 Delta R.T.: 0.021 min  
 Response: 35500592  
 Conc: 50.19 ng/ml



#37 AR-1262-2

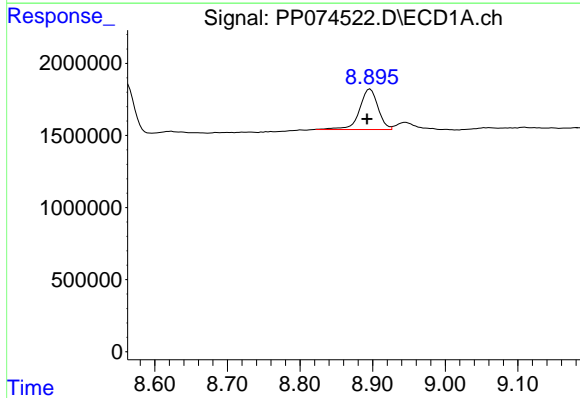
R.T.: 8.562 min  
 Delta R.T.: -0.004 min  
 Response: 5440543  
 Conc: 41.10 ng/ml

Instrument :  
 ECD\_P  
 ClientSampleId :  
 ICVPP081925AR1254



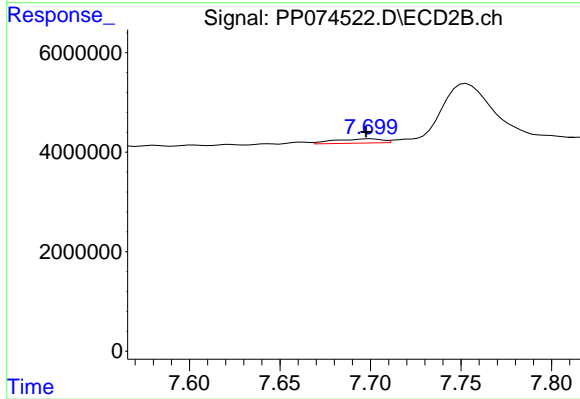
#37 AR-1262-2

R.T.: 7.171 min  
 Delta R.T.: -0.005 min  
 Response: 7985079  
 Conc: 15.33 ng/ml



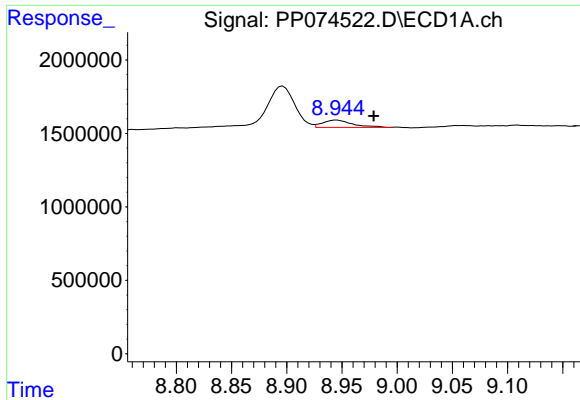
#38 AR-1262-3

R.T.: 8.897 min  
 Delta R.T.: 0.004 min  
 Response: 4928010  
 Conc: 50.69 ng/ml



#38 AR-1262-3

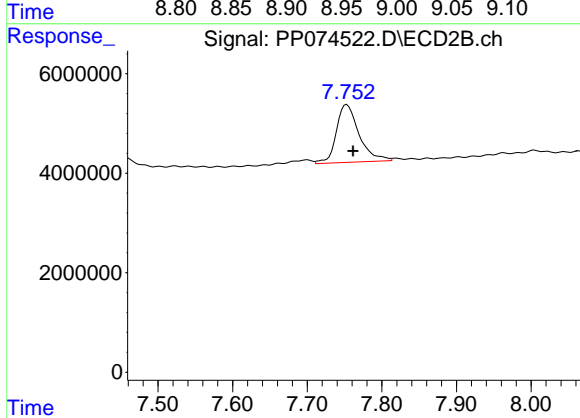
R.T.: 7.700 min  
 Delta R.T.: 0.003 min  
 Response: 1583894  
 Conc: 3.40 ng/ml



#39 AR-1262-4

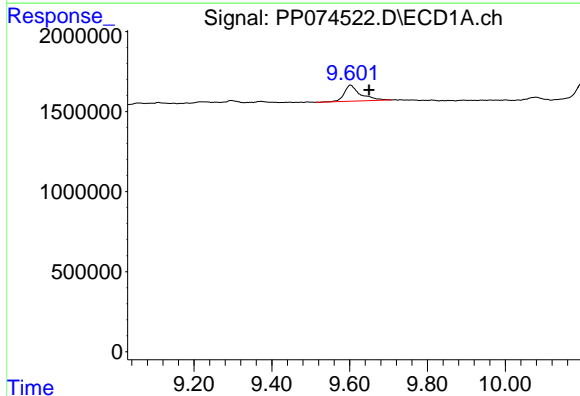
R.T.: 8.945 min  
 Delta R.T.: -0.033 min  
 Response: 924526  
 Conc: 12.27 ng/ml

Instrument :  
 ECD\_P  
 ClientSampleId :  
 ICVPP081925AR1254



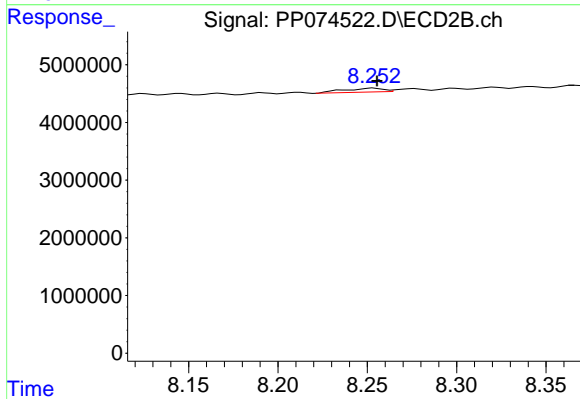
#39 AR-1262-4

R.T.: 7.753 min  
 Delta R.T.: -0.008 min  
 Response: 24615396  
 Conc: 29.95 ng/ml



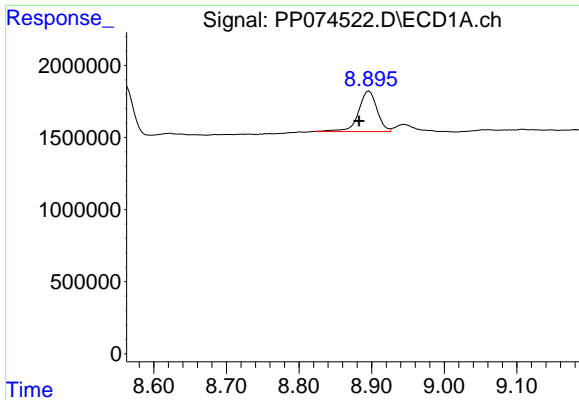
#40 AR-1262-5

R.T.: 9.603 min  
 Delta R.T.: -0.047 min  
 Response: 2877554  
 Conc: 47.21 ng/ml



#40 AR-1262-5

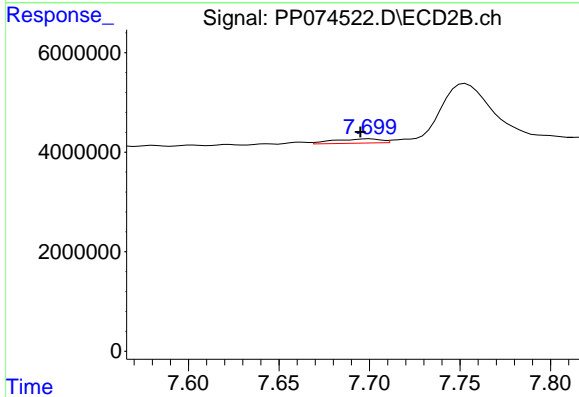
R.T.: 8.254 min  
 Delta R.T.: -0.002 min  
 Response: 1035944  
 Conc: 2.89 ng/ml



#41 AR-1268-1

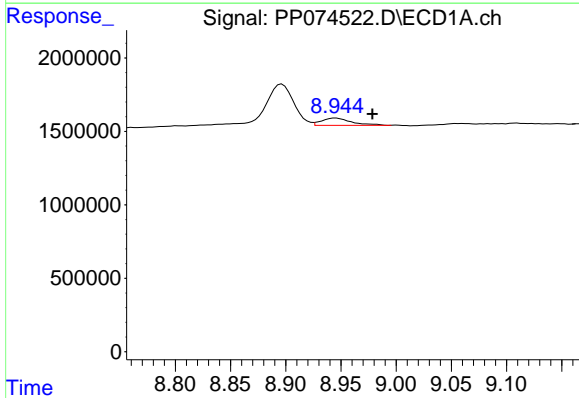
R.T.: 8.897 min  
 Delta R.T.: 0.014 min  
 Response: 4928010  
 Conc: 30.41 ng/ml

Instrument :  
 ECD\_P  
 ClientSampleId :  
 ICVPP081925AR1254



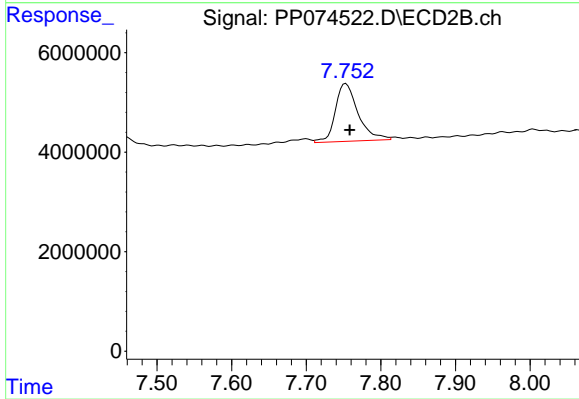
#41 AR-1268-1

R.T.: 7.700 min  
 Delta R.T.: 0.005 min  
 Response: 1583894  
 Conc: 1.12 ng/ml



#42 AR-1268-2

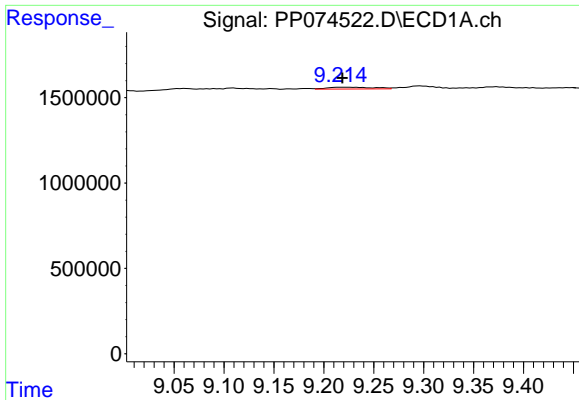
R.T.: 8.945 min  
 Delta R.T.: -0.033 min  
 Response: 924526  
 Conc: 6.30 ng/ml



#42 AR-1268-2

R.T.: 7.753 min  
 Delta R.T.: -0.005 min  
 Response: 24615396  
 Conc: 18.05 ng/ml

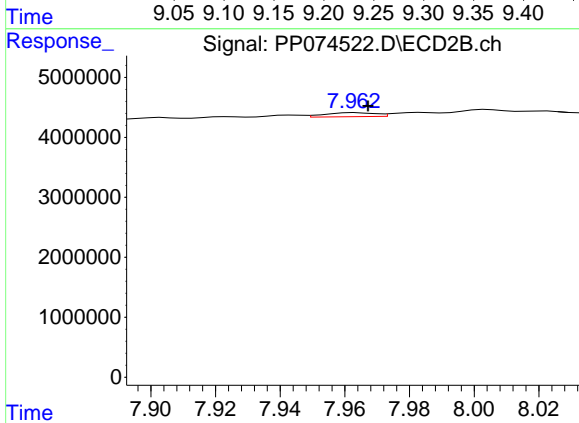




#43 AR-1268-3

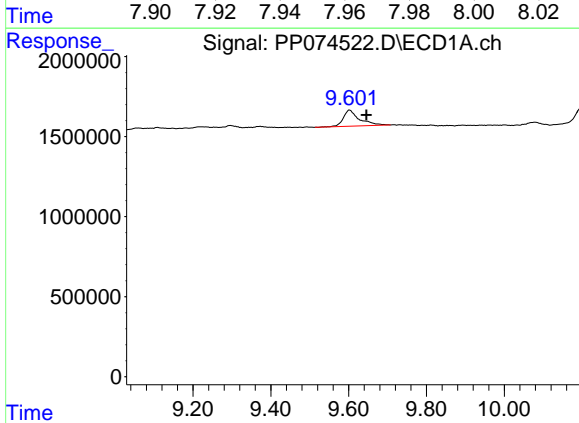
R.T.: 9.216 min  
 Delta R.T.: -0.002 min  
 Response: 336103  
 Conc: 2.72 ng/ml

Instrument :  
 ECD\_P  
 ClientSampleId :  
 ICVPP081925AR1254



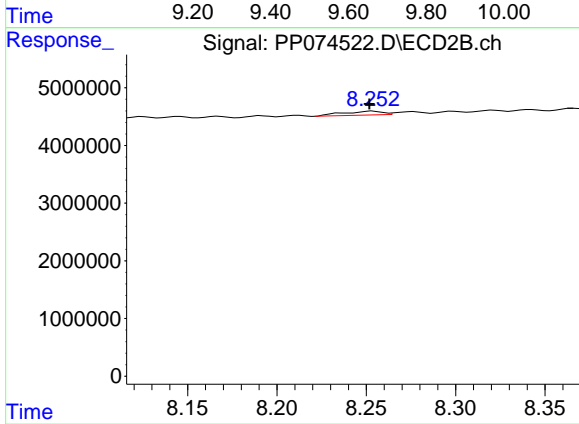
#43 AR-1268-3

R.T.: 7.963 min  
 Delta R.T.: -0.004 min  
 Response: 717631  
 Conc: 0.69 ng/ml



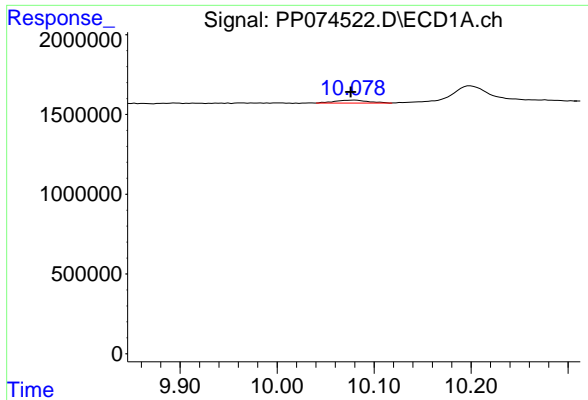
#44 AR-1268-4

R.T.: 9.603 min  
 Delta R.T.: -0.043 min  
 Response: 2877554  
 Conc: 42.78 ng/ml



#44 AR-1268-4

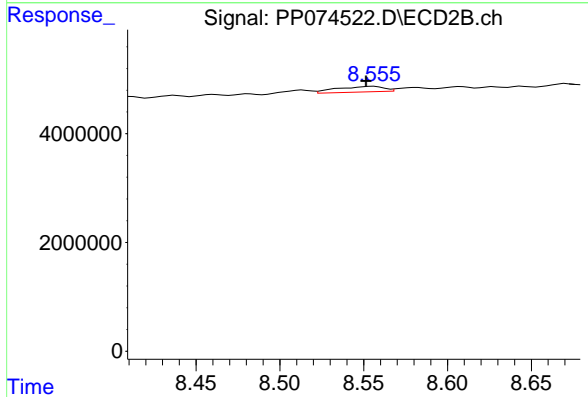
R.T.: 8.254 min  
 Delta R.T.: 0.002 min  
 Response: 1035944  
 Conc: 2.70 ng/ml



#45 AR-1268-5

R.T.: 10.080 min  
 Delta R.T.: 0.004 min  
 Response: 430496  
 Conc: 1.16 ng/ml

Instrument : ECD\_P  
 ClientSampleId : ICVPP081925AR1254



#45 AR-1268-5

R.T.: 8.556 min  
 Delta R.T.: 0.004 min  
 Response: 2014167  
 Conc: 0.64 ng/ml