

Data Path : Z:\pestpcbsrv\HPCHEM1\ECD\_P\Data\PP082024\  
 Data File : PP066724.D  
 Signal(s) : Signal #1: ECD1A.ch Signal #2: ECD2B.ch  
 Acq On : 21 Aug 2024 04:45  
 Operator : YP\AJ  
 Sample : P3390-01  
 Misc : AR1248 LOD 40 PPB  
 ALS Vial : 58 Sample Multiplier: 1

Instrument :  
 ECD\_P  
 ClientSampleId :  
 LOD-MDL-SOIL-01-QT3-2024

Integration File signal 1: autoint1.e  
 Integration File signal 2: autoint2.e  
 Quant Time: Aug 21 06:00:31 2024  
 Quant Method : Z:\pestpcbsrv\HPCHEM1\ECD\_P\methods\PP082024.M  
 Quant Title : GC EXTRACTABLES  
 QLast Update : Wed Aug 21 05:19:45 2024  
 Response via : Initial Calibration  
 Integrator: ChemStation

Volume Inj. : 2 µl  
 Signal #1 Phase : ZB-MR1 Signal #2 Phase: ZB-MR2  
 Signal #1 Info : 30Mx0.32mmx 0.50µ Signal #2 Info : 30M x 0.32mm x 0.25µm

Compound	RT#1	RT#2	Resp#1	Resp#2	ng/ml	ng/ml
System Monitoring Compounds						
1) SA Tetrachlo...	4.703	3.979	22013491	17711660	14.866	13.546
2) SA Decachlor...	10.621	9.143	13199497	10917043	15.041	13.105
Target Compounds						
3) L1 AR-1016-1	5.875	5.086	946069	907931	22.198	22.648
4) L1 AR-1016-2	5.899	5.106	1137624	685762	17.005	11.508 #
5) L1 AR-1016-3	5.966	5.290	596235	422297	14.087	14.127
6) L1 AR-1016-4	6.063	5.327	518195	1094706	15.882	41.773 #
7) L1 AR-1016-5	6.356	5.548	1501854	1416736	47.355	43.629
9) L2 AR-1221-2	5.013	4.290	301171	367955	24.288	31.351 #
10) L2 AR-1221-3	5.077	4.358	121808	121182	3.210	3.325
11) L3 AR-1232-1	5.077	4.358	121808	121182	3.830	3.954
12) L3 AR-1232-2	5.608	5.106	392749	685762	22.675	25.416
13) L3 AR-1232-3	5.899	5.290	1137624	422297	37.685	31.489
14) L3 AR-1232-4	6.063	5.371	518195	1104959	35.184	85.960 #
15) L3 AR-1232-5	6.150	5.548	1382686	1416736	116.482	102.299
16) L4 AR-1242-1	5.875	5.086	946069	907931	29.338	29.592
17) L4 AR-1242-2	5.899	5.106	1137624	685762	22.479	15.134 #
18) L4 AR-1242-3	5.966	5.290	596235	422297	18.869	18.079
19) L4 AR-1242-4	6.063	5.371	518195	1104959	20.911	43.912 #
20) L4 AR-1242-5	6.801	5.905	1504978	1586040	59.892	56.071
21) L5 AR-1248-1	5.875	5.086	946069	907931	37.016	37.500
22) L5 AR-1248-2	6.150	5.327	1382686	1094706	34.412	30.310
23) L5 AR-1248-3	6.356	5.371	1501854	1104959	34.445	29.596
24) L5 AR-1248-4	6.760	5.548	1418169	1416736	32.103	32.109
25) L5 AR-1248-5	6.801	5.947	1504978	1268978	32.829	33.593
26) L6 AR-1254-1	6.735	5.905	1226483	1586040	24.844	26.475
27) L6 AR-1254-2	6.956	6.054	1700440	621941	23.307	11.638 #
28) L6 AR-1254-3	7.322	6.468	813508	747108	11.643	9.448
29) L6 AR-1254-4	7.607	6.699	592457	430146	13.307	10.640
30) L6 AR-1254-5	8.023	7.135	2830832	379683	42.700	5.907 #
31) L7 AR-1260-1	0.000	6.621f	0	533338	N.D.	9.023 #
32) L7 AR-1260-2	7.739	6.786	247024	277495	3.880	4.073
33) L7 AR-1260-3	8.116	6.952	864846	445429	19.447	6.856 #
34) L7 AR-1260-4	8.333	7.439	635036	400532	12.032	8.894 #
35) L7 AR-1260-5	8.675	0.000	270976	0	3.046	N.D. #
36) L8 AR-1262-1	8.023	7.135f	2830832	379683	62.697	11.878 #
37) L8 AR-1262-2	8.675	7.439f	270976	400532	2.482	6.424 #
38) L8 AR-1262-3	9.032f	7.947	80841	-4421	1.139	N.D. #
39) L8 AR-1262-4	9.105	0.000	91808	0	1.573	N.D. #
40) L8 AR-1262-5	9.838f	0.000	108082	0	3.237	N.D. #
41) L9 AR-1268-1	9.032f	7.947	80841	-4421	0.645	N.D. #
42) L9 AR-1268-2	9.105	0.000	91808	0	0.832	N.D. #

Data Path : Z:\pestpcbsrv\HPCHEM1\ECD\_P\Data\PP082024\  
 Data File : PP066724.D  
 Signal(s) : Signal #1: ECD1A.ch Signal #2: ECD2B.ch  
 Acq On : 21 Aug 2024 04:45  
 Operator : YP\AJ  
 Sample : P3390-01  
 Misc : AR1248 LOD 40 PPB  
 ALS Vial : 58 Sample Multiplier: 1

**Instrument :**  
 ECD\_P  
**ClientSampleId :**  
 LOD-MDL-SOIL-01-QT3-2024

Integration File signal 1: autoint1.e  
 Integration File signal 2: autoint2.e  
 Quant Time: Aug 21 06:00:31 2024  
 Quant Method : Z:\pestpcbsrv\HPCHEM1\ECD\_P\methods\PP082024.M  
 Quant Title : GC EXTRACTABLES  
 QLast Update : Wed Aug 21 05:19:45 2024  
 Response via : Initial Calibration  
 Integrator: ChemStation

Volume Inj. : 2 µl  
 Signal #1 Phase : ZB-MR1 Signal #2 Phase: ZB-MR2  
 Signal #1 Info : 30Mx0.32mmx 0.50µ Signal #2 Info : 30M x 0.32mm x 0.25µm

	Compound	RT#1	RT#2	Resp#1	Resp#2	ng/ml	ng/ml
43)	L9 AR-1268-3	9.366	0.000	129666	0	1.307	N.D. #
44)	L9 AR-1268-4	9.838f	0.000	108082	0	3.547	N.D. #
45)	L9 AR-1268-5	10.263	8.887f	42416	287754	0.149	0.991 #

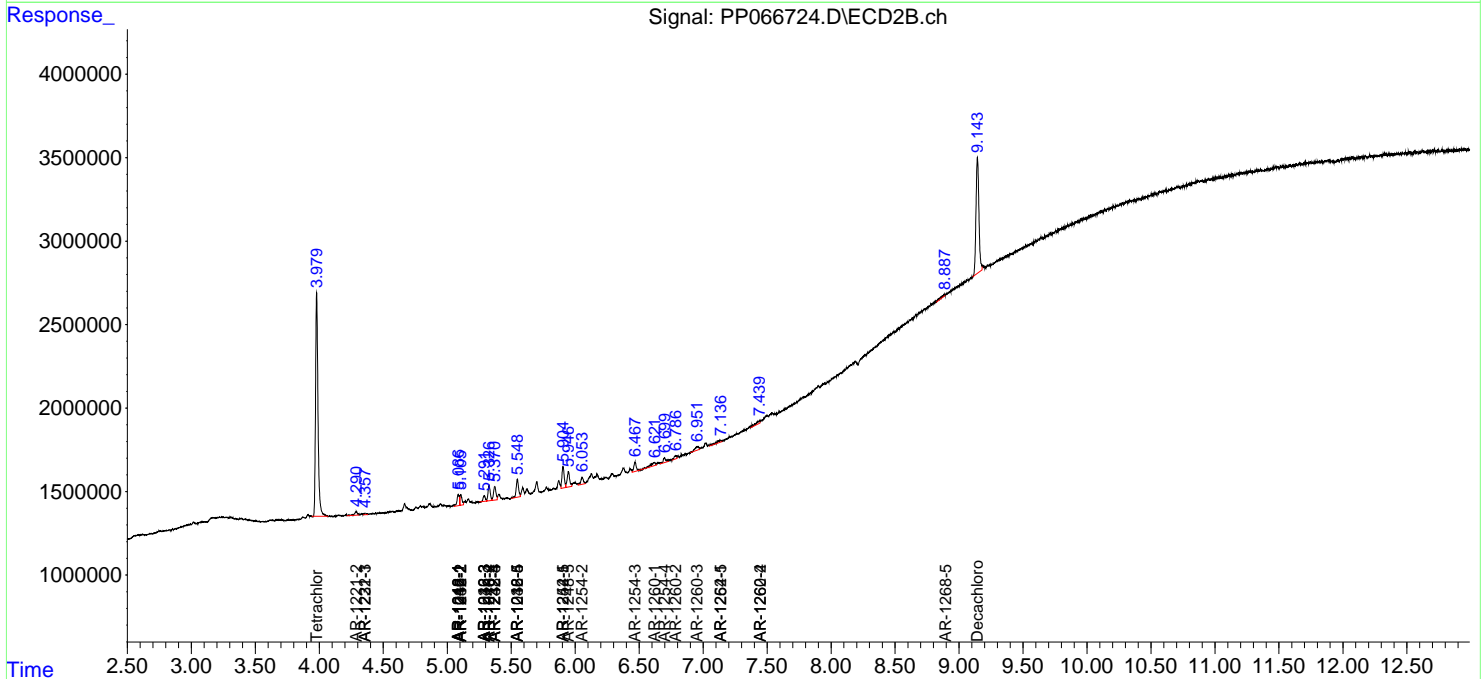
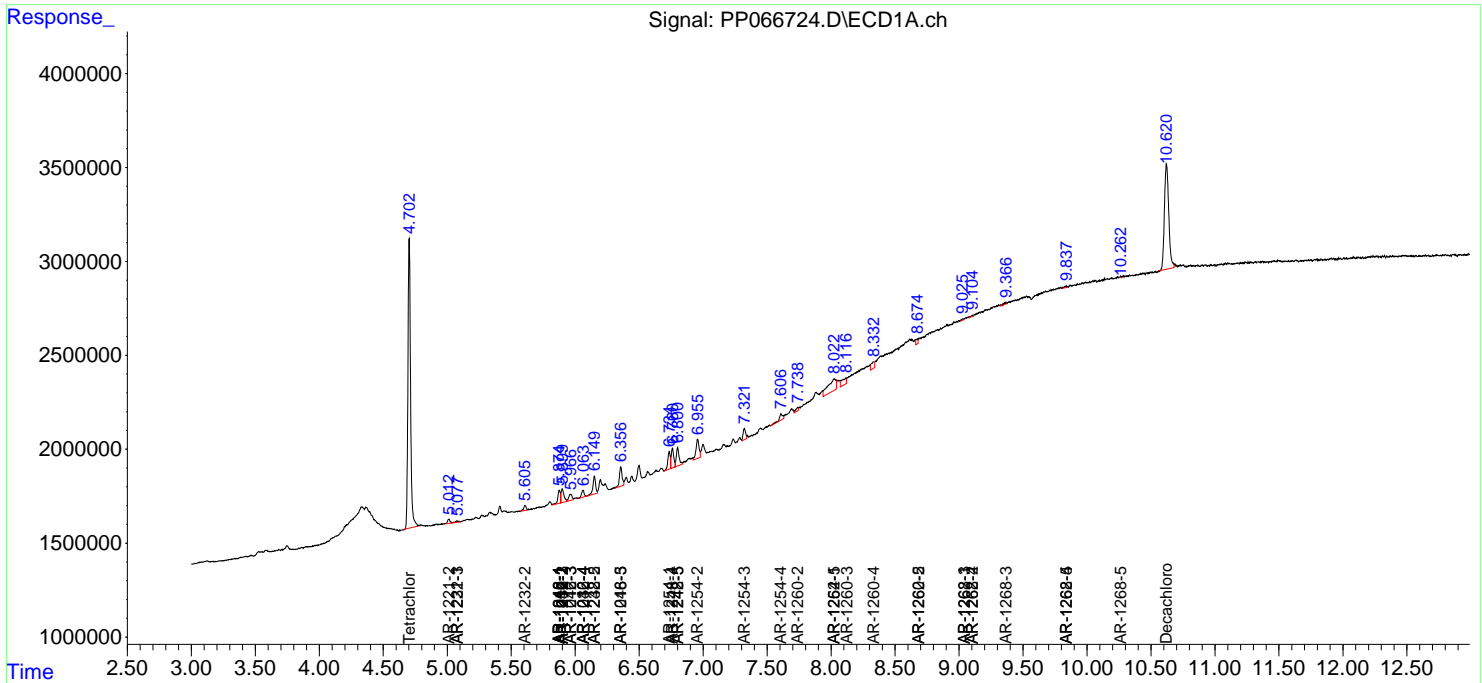
(f)=RT Delta > 1/2 Window (#)=Amounts differ by > 25% (m)=manual int.

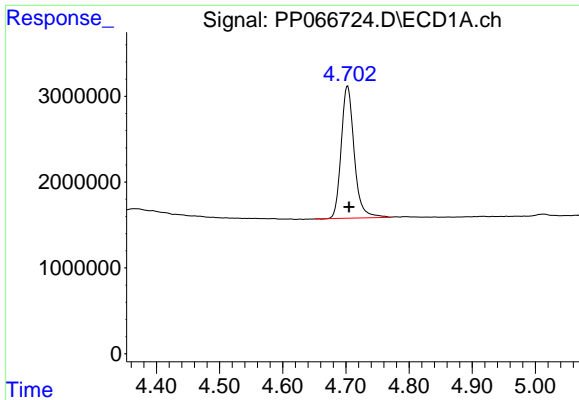
Data Path : Z:\pestpcbsrv\HPCHEM1\ECD\_P\Data\PP082024\  
 Data File : PP066724.D  
 Signal(s) : Signal #1: ECD1A.ch Signal #2: ECD2B.ch  
 Acq On : 21 Aug 2024 04:45  
 Operator : YP\AJ  
 Sample : P3390-01  
 Misc : AR1248 LOD 40 PPB  
 ALS Vial : 58 Sample Multiplier: 1

**Instrument :**  
 ECD\_P  
**ClientSampleId :**  
 LOD-MDL-SOIL-01-QT3-2024

Integration File signal 1: autoint1.e  
 Integration File signal 2: autoint2.e  
 Quant Time: Aug 21 06:00:31 2024  
 Quant Method : Z:\pestpcbsrv\HPCHEM1\ECD\_P\methods\PP082024.M  
 Quant Title : GC EXTRACTABLES  
 QLast Update : Wed Aug 21 05:19:45 2024  
 Response via : Initial Calibration  
 Integrator: ChemStation

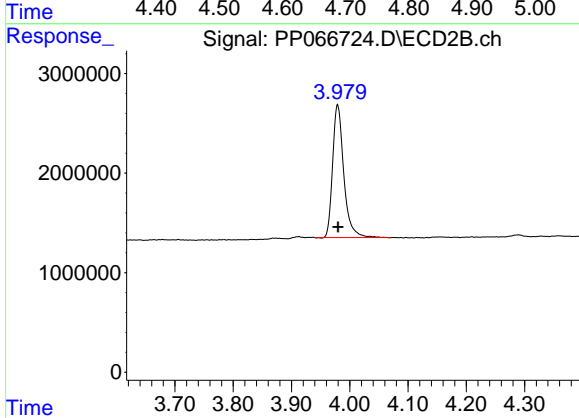
Volume Inj. : 2 µl  
 Signal #1 Phase : ZB-MR1 Signal #2 Phase: ZB-MR2  
 Signal #1 Info : 30Mx0.32mmx 0.50µ Signal #2 Info : 30M x 0.32mm x 0.25µm



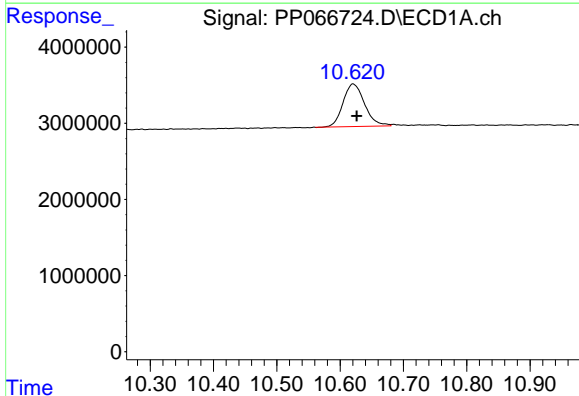


#1 Tetrachloro-m-xylene  
 R.T.: 4.703 min  
 Delta R.T.: -0.002 min  
 Response: 22013491  
 Conc: 14.87 ng/ml

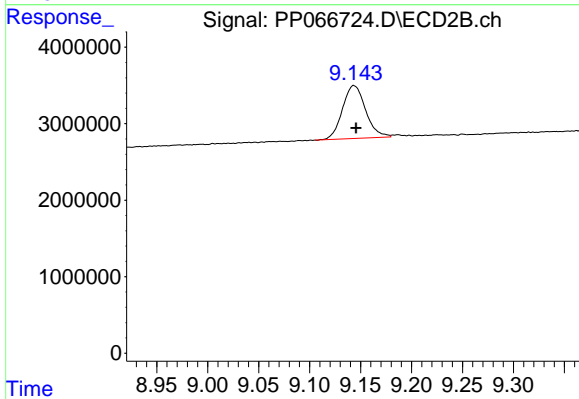
Instrument :  
 ECD\_P  
 ClientSampleId :  
 LOD-MDL-SOIL-01-QT3-2024



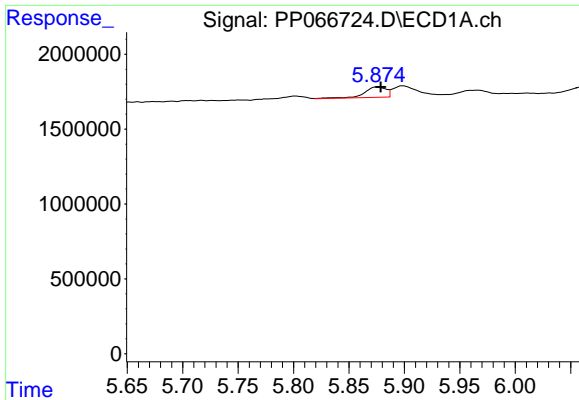
#1 Tetrachloro-m-xylene  
 R.T.: 3.979 min  
 Delta R.T.: 0.000 min  
 Response: 17711660  
 Conc: 13.55 ng/ml



#2 Decachlorobiphenyl  
 R.T.: 10.621 min  
 Delta R.T.: -0.006 min  
 Response: 13199497  
 Conc: 15.04 ng/ml



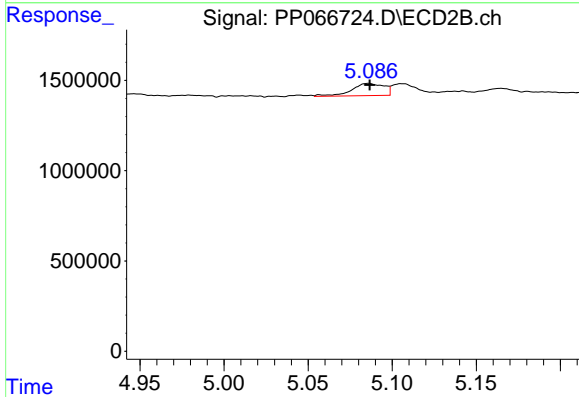
#2 Decachlorobiphenyl  
 R.T.: 9.143 min  
 Delta R.T.: -0.002 min  
 Response: 10917043  
 Conc: 13.10 ng/ml



#3 AR-1016-1

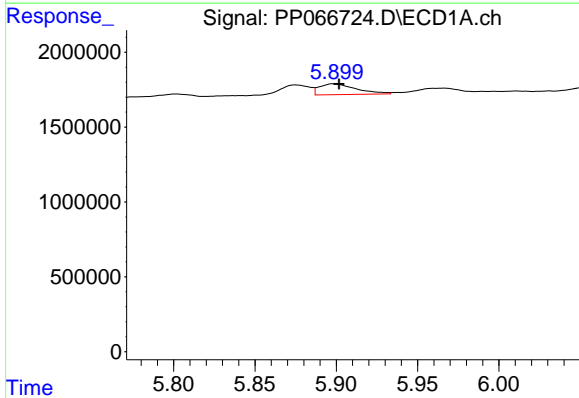
R.T.: 5.875 min  
 Delta R.T.: -0.003 min  
 Response: 946069  
 Conc: 22.20 ng/ml

Instrument :  
 ECD\_P  
 ClientSampleId :  
 LOD-MDL-SOIL-01-QT3-2024



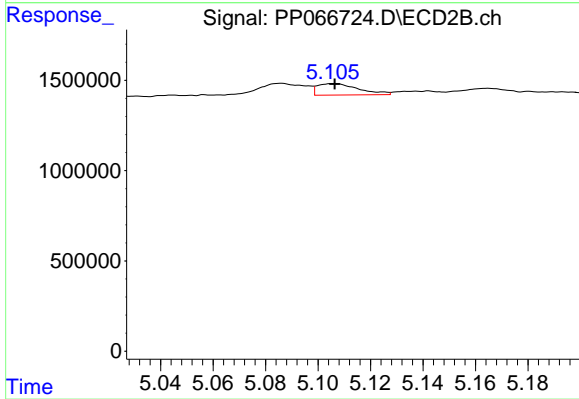
#3 AR-1016-1

R.T.: 5.086 min  
 Delta R.T.: 0.000 min  
 Response: 907931  
 Conc: 22.65 ng/ml



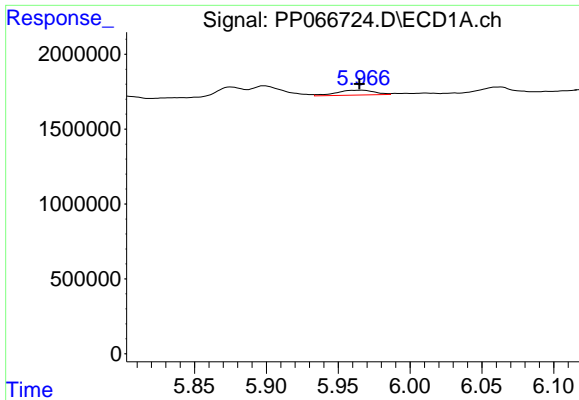
#4 AR-1016-2

R.T.: 5.899 min  
 Delta R.T.: -0.003 min  
 Response: 1137624  
 Conc: 17.00 ng/ml



#4 AR-1016-2

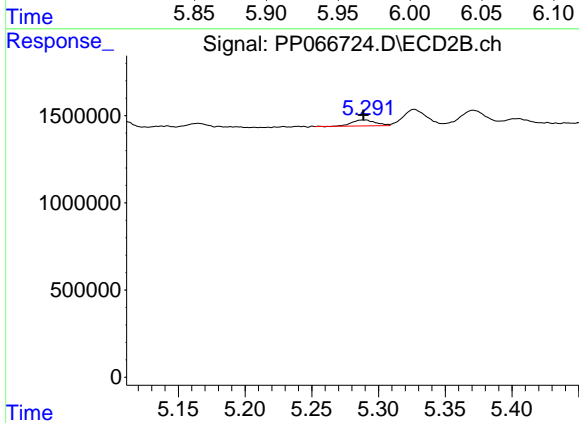
R.T.: 5.106 min  
 Delta R.T.: 0.000 min  
 Response: 685762  
 Conc: 11.51 ng/ml



#5 AR-1016-3

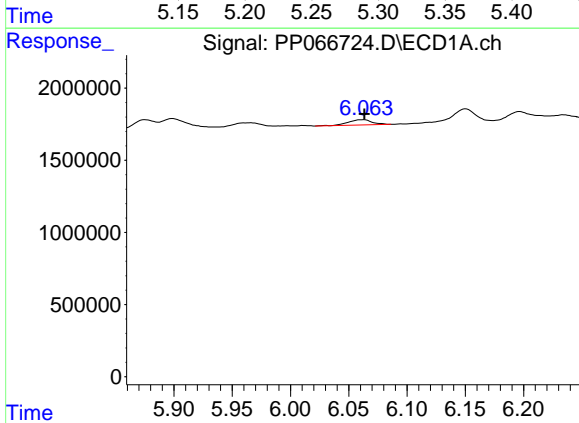
R.T.: 5.966 min  
 Delta R.T.: 0.001 min  
 Response: 596235  
 Conc: 14.09 ng/ml

Instrument :  
 ECD\_P  
 ClientSampleId :  
 LOD-MDL-SOIL-01-QT3-2024



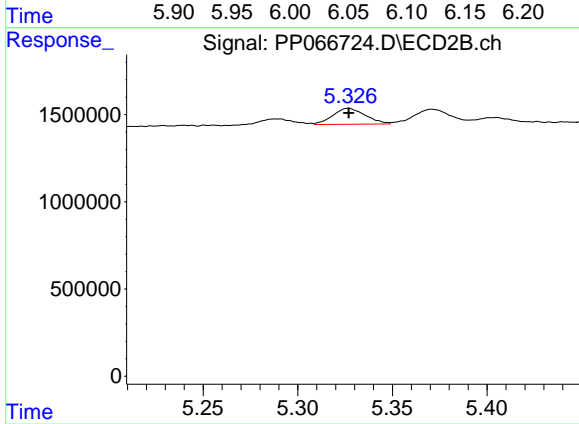
#5 AR-1016-3

R.T.: 5.290 min  
 Delta R.T.: 0.000 min  
 Response: 422297  
 Conc: 14.13 ng/ml



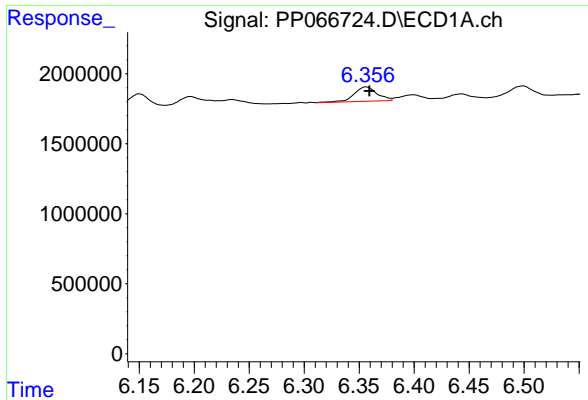
#6 AR-1016-4

R.T.: 6.063 min  
 Delta R.T.: 0.000 min  
 Response: 518195  
 Conc: 15.88 ng/ml



#6 AR-1016-4

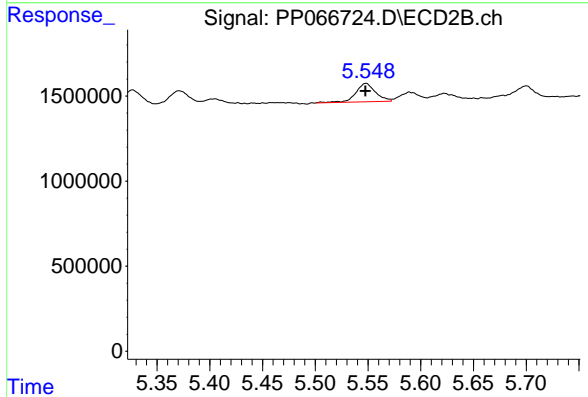
R.T.: 5.327 min  
 Delta R.T.: 0.000 min  
 Response: 1094706  
 Conc: 41.77 ng/ml



#7 AR-1016-5

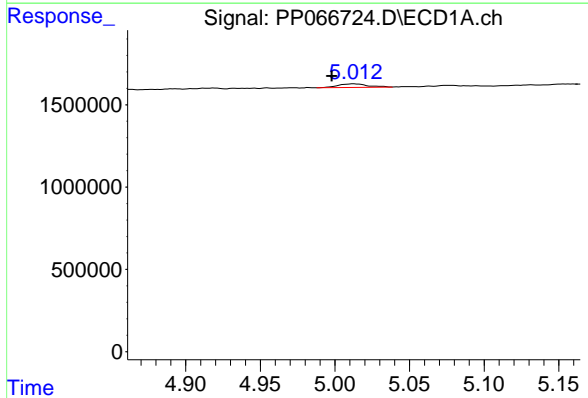
R.T.: 6.356 min  
 Delta R.T.: -0.003 min  
 Response: 1501854  
 Conc: 47.36 ng/ml

Instrument :  
 ECD\_P  
 ClientSampleId :  
 LOD-MDL-SOIL-01-QT3-2024



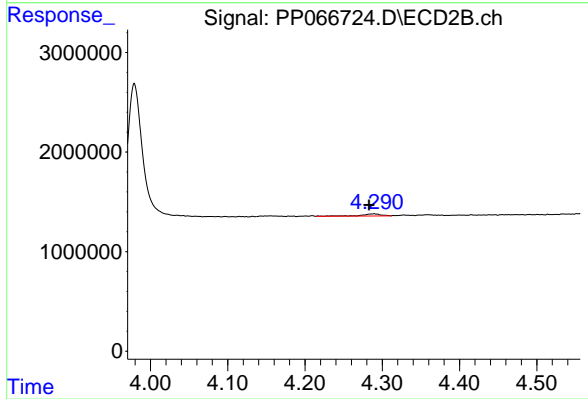
#7 AR-1016-5

R.T.: 5.548 min  
 Delta R.T.: 0.000 min  
 Response: 1416736  
 Conc: 43.63 ng/ml



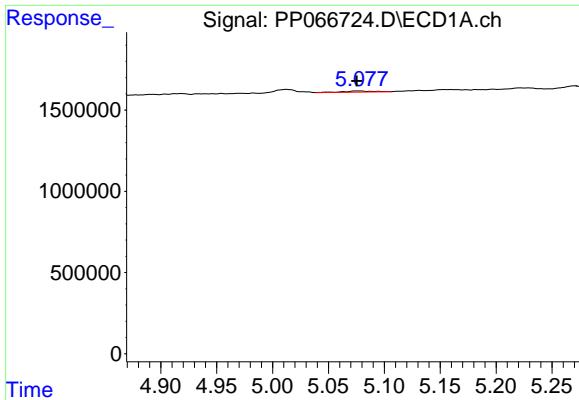
#9 AR-1221-2

R.T.: 5.013 min  
 Delta R.T.: 0.015 min  
 Response: 301171  
 Conc: 24.29 ng/ml



#9 AR-1221-2

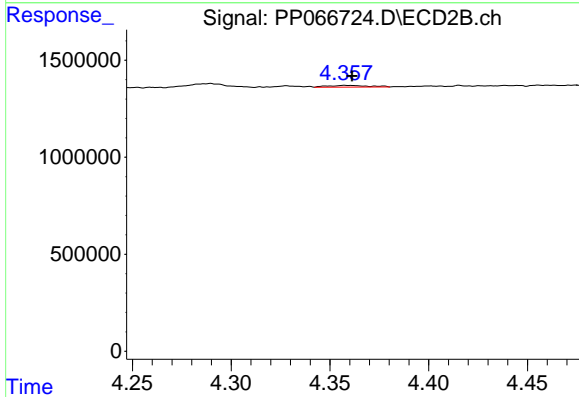
R.T.: 4.290 min  
 Delta R.T.: 0.006 min  
 Response: 367955  
 Conc: 31.35 ng/ml



#10 AR-1221-3

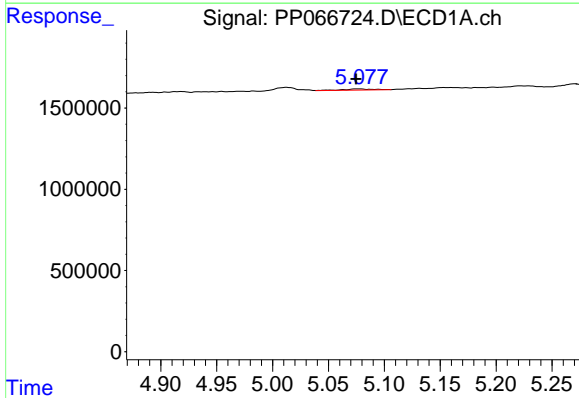
R.T.: 5.077 min  
 Delta R.T.: 0.002 min  
 Response: 121808  
 Conc: 3.21 ng/ml

Instrument : ECD\_P  
 ClientSampleId : LOD-MDL-SOIL-01-QT3-2024



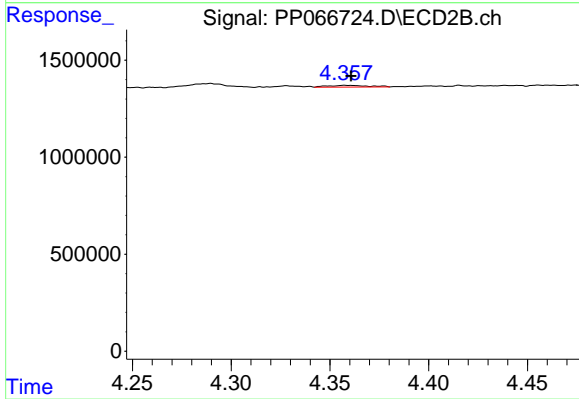
#10 AR-1221-3

R.T.: 4.358 min  
 Delta R.T.: -0.003 min  
 Response: 121182  
 Conc: 3.33 ng/ml



#11 AR-1232-1

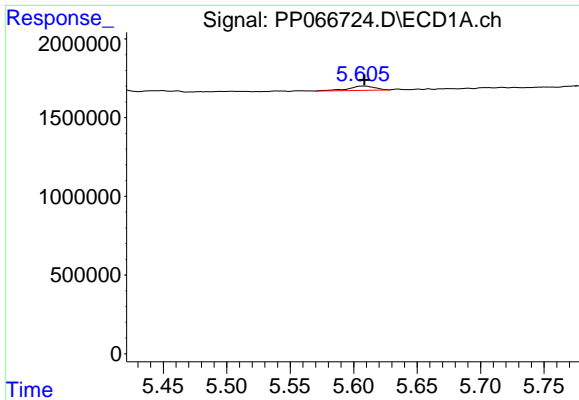
R.T.: 5.077 min  
 Delta R.T.: 0.002 min  
 Response: 121808  
 Conc: 3.83 ng/ml



#11 AR-1232-1

R.T.: 4.358 min  
 Delta R.T.: -0.003 min  
 Response: 121182  
 Conc: 3.95 ng/ml

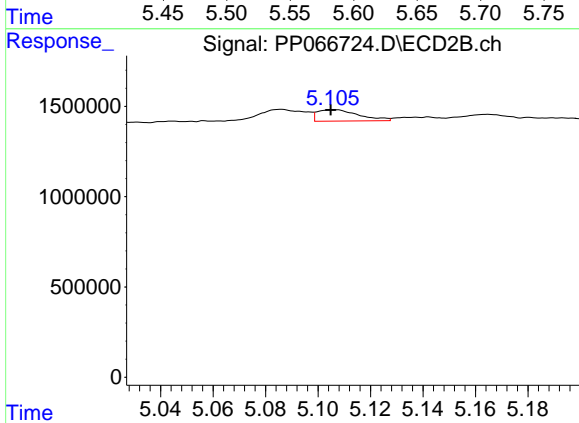




#12 AR-1232-2

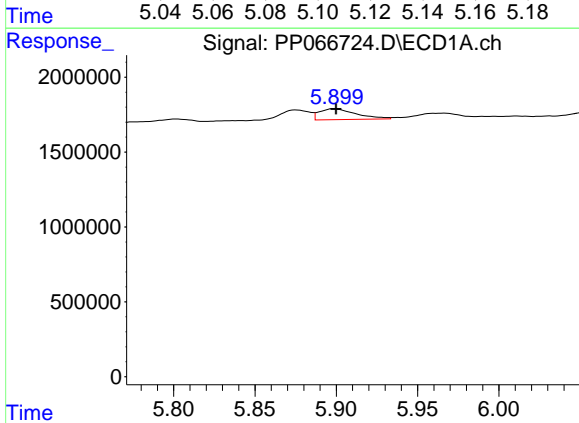
R.T.: 5.608 min  
 Delta R.T.: 0.000 min  
 Response: 392749  
 Conc: 22.67 ng/ml

Instrument :  
 ECD\_P  
 ClientSampleId :  
 LOD-MDL-SOIL-01-QT3-2024



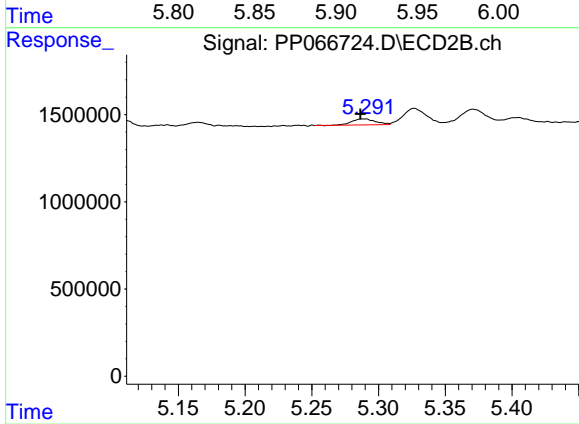
#12 AR-1232-2

R.T.: 5.106 min  
 Delta R.T.: 0.001 min  
 Response: 685762  
 Conc: 25.42 ng/ml



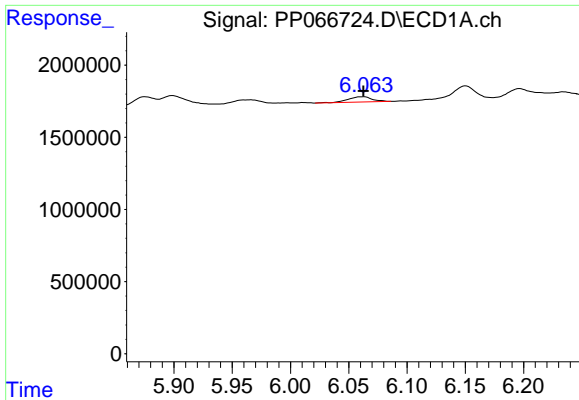
#13 AR-1232-3

R.T.: 5.899 min  
 Delta R.T.: -0.001 min  
 Response: 1137624  
 Conc: 37.68 ng/ml



#13 AR-1232-3

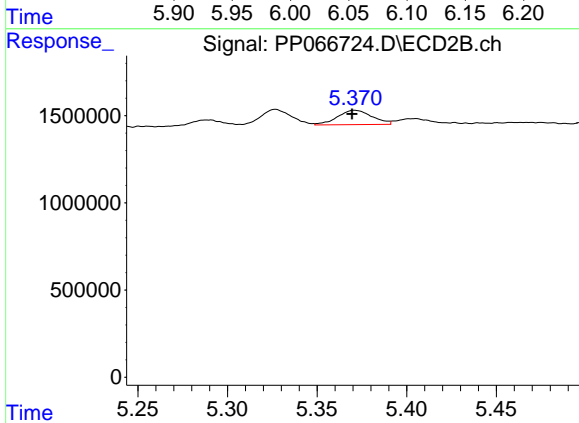
R.T.: 5.290 min  
 Delta R.T.: 0.003 min  
 Response: 422297  
 Conc: 31.49 ng/ml



#14 AR-1232-4

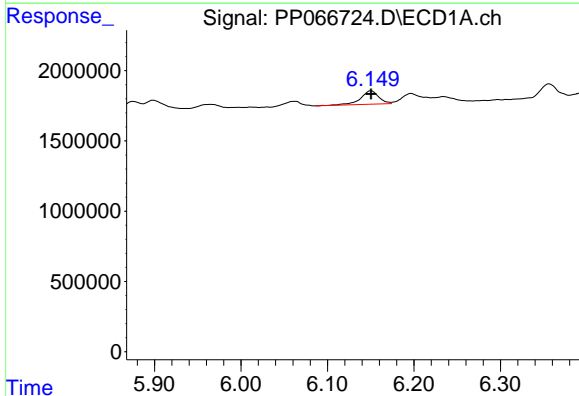
R.T.: 6.063 min  
 Delta R.T.: 0.000 min  
 Response: 518195  
 Conc: 35.18 ng/ml

Instrument : ECD\_P  
 ClientSampleId : LOD-MDL-SOIL-01-QT3-2024



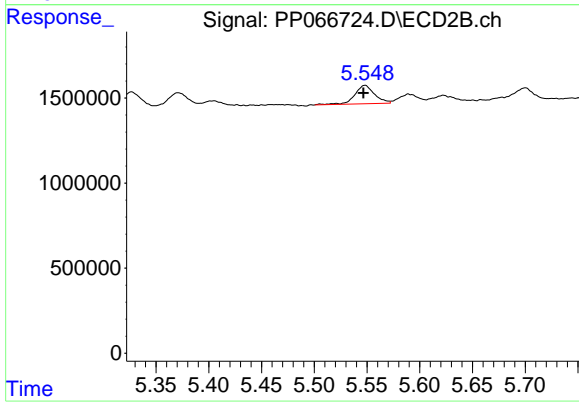
#14 AR-1232-4

R.T.: 5.371 min  
 Delta R.T.: 0.002 min  
 Response: 1104959  
 Conc: 85.96 ng/ml



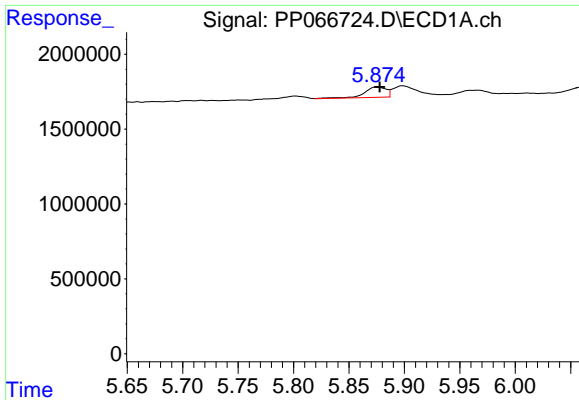
#15 AR-1232-5

R.T.: 6.150 min  
 Delta R.T.: 0.000 min  
 Response: 1382686  
 Conc: 116.48 ng/ml



#15 AR-1232-5

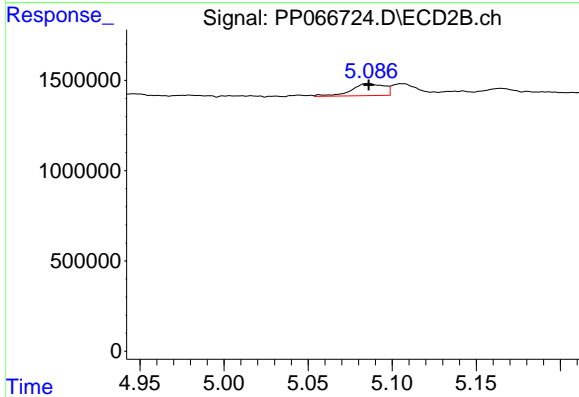
R.T.: 5.548 min  
 Delta R.T.: 0.002 min  
 Response: 1416736  
 Conc: 102.30 ng/ml



#16 AR-1242-1

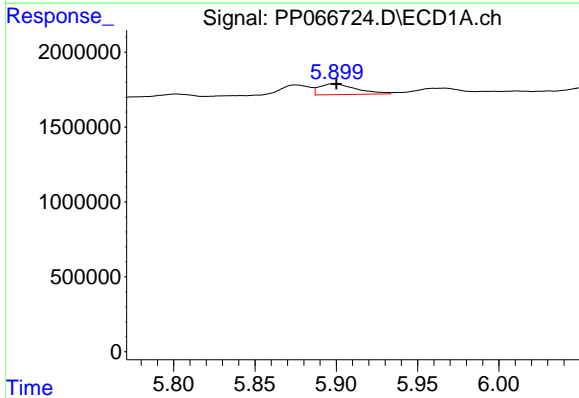
R.T.: 5.875 min  
 Delta R.T.: -0.003 min  
 Response: 946069  
 Conc: 29.34 ng/ml

Instrument :  
 ECD\_P  
 ClientSampleId :  
 LOD-MDL-SOIL-01-QT3-2024



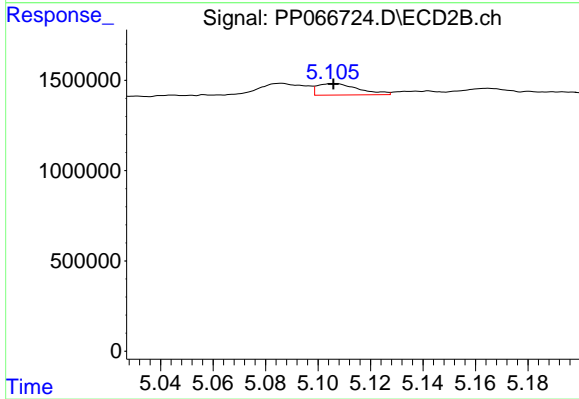
#16 AR-1242-1

R.T.: 5.086 min  
 Delta R.T.: 0.000 min  
 Response: 907931  
 Conc: 29.59 ng/ml



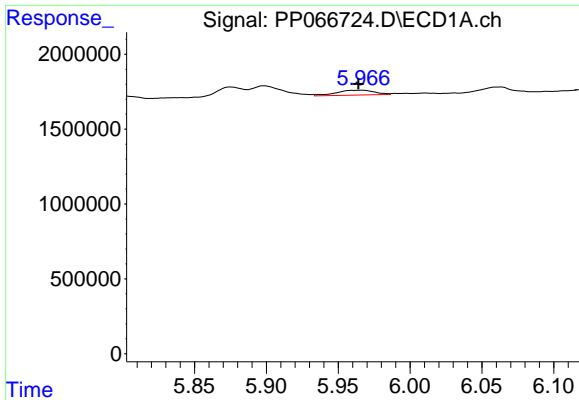
#17 AR-1242-2

R.T.: 5.899 min  
 Delta R.T.: -0.001 min  
 Response: 1137624  
 Conc: 22.48 ng/ml



#17 AR-1242-2

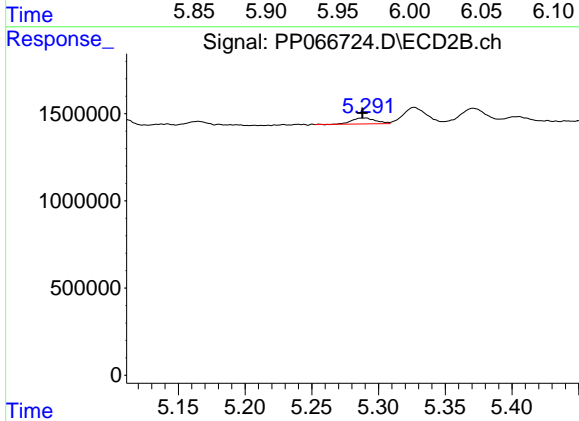
R.T.: 5.106 min  
 Delta R.T.: 0.000 min  
 Response: 685762  
 Conc: 15.13 ng/ml



#18 AR-1242-3

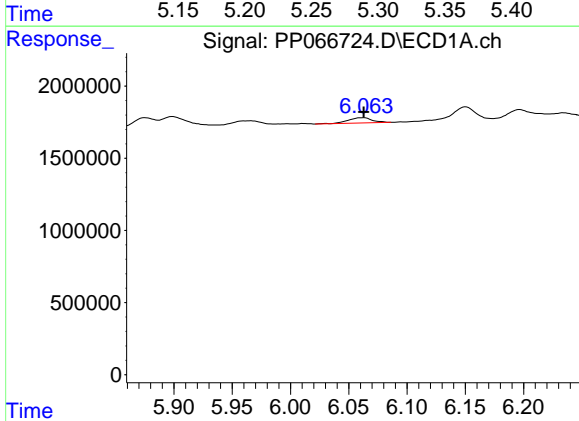
R.T.: 5.966 min  
 Delta R.T.: 0.002 min  
 Response: 596235  
 Conc: 18.87 ng/ml

Instrument :  
 ECD\_P  
 ClientSampleId :  
 LOD-MDL-SOIL-01-QT3-2024



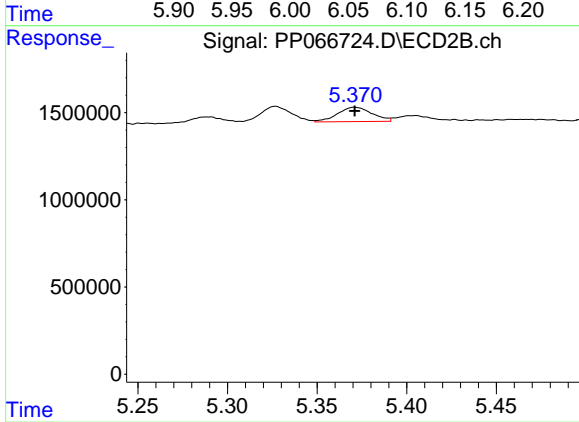
#18 AR-1242-3

R.T.: 5.290 min  
 Delta R.T.: 0.002 min  
 Response: 422297  
 Conc: 18.08 ng/ml



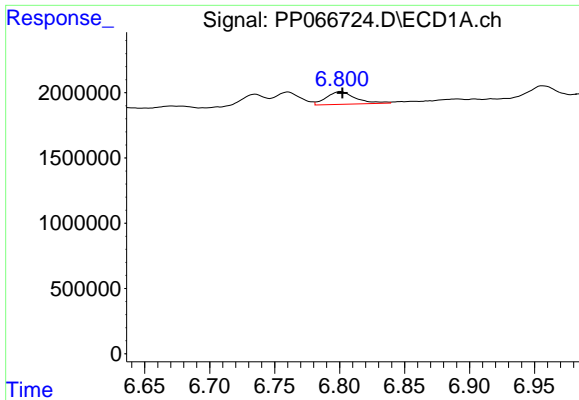
#19 AR-1242-4

R.T.: 6.063 min  
 Delta R.T.: 0.000 min  
 Response: 518195  
 Conc: 20.91 ng/ml



#19 AR-1242-4

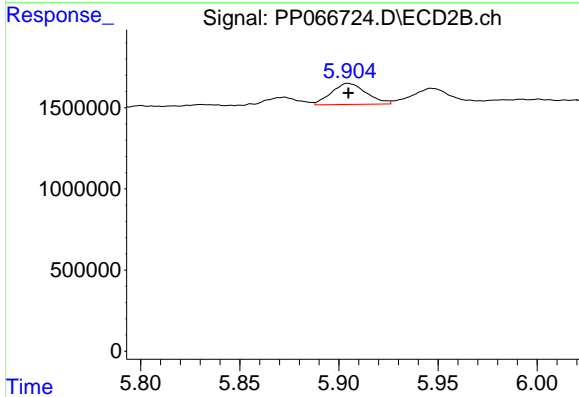
R.T.: 5.371 min  
 Delta R.T.: 0.000 min  
 Response: 1104959  
 Conc: 43.91 ng/ml



#20 AR-1242-5

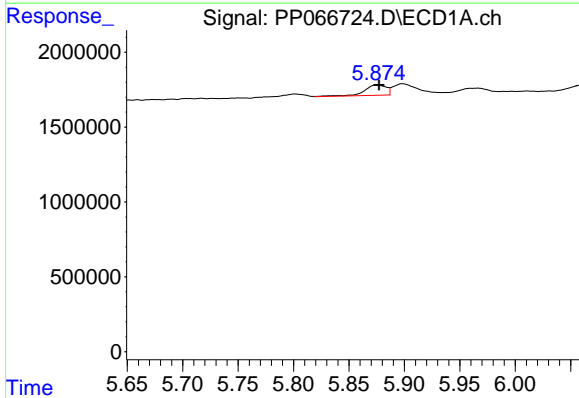
R.T.: 6.801 min  
 Delta R.T.: -0.001 min  
 Response: 1504978  
 Conc: 59.89 ng/ml

Instrument :  
 ECD\_P  
 ClientSampleId :  
 LOD-MDL-SOIL-01-QT3-2024



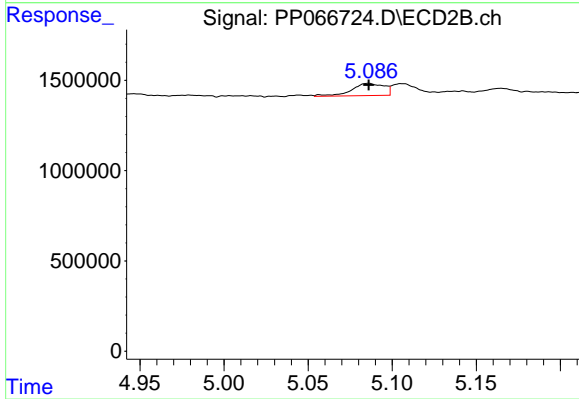
#20 AR-1242-5

R.T.: 5.905 min  
 Delta R.T.: 0.000 min  
 Response: 1586040  
 Conc: 56.07 ng/ml



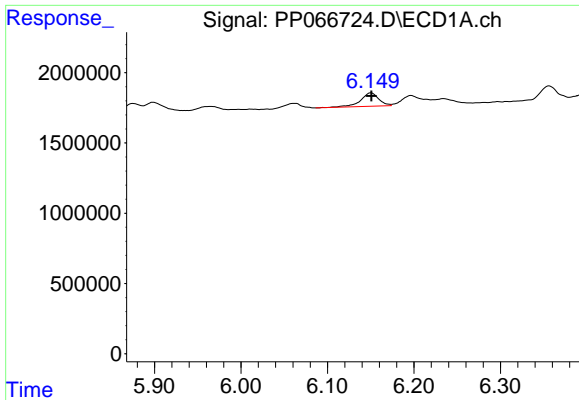
#21 AR-1248-1

R.T.: 5.875 min  
 Delta R.T.: -0.002 min  
 Response: 946069  
 Conc: 37.02 ng/ml



#21 AR-1248-1

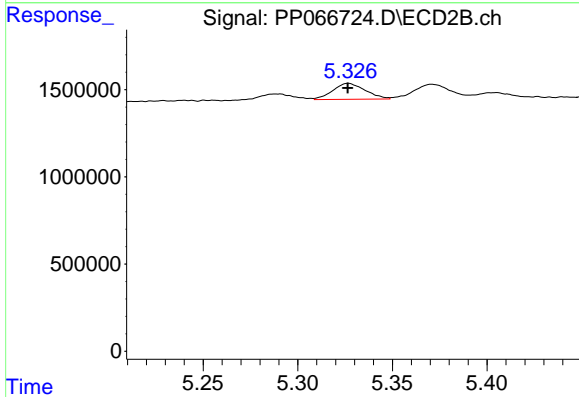
R.T.: 5.086 min  
 Delta R.T.: 0.000 min  
 Response: 907931  
 Conc: 37.50 ng/ml



#22 AR-1248-2

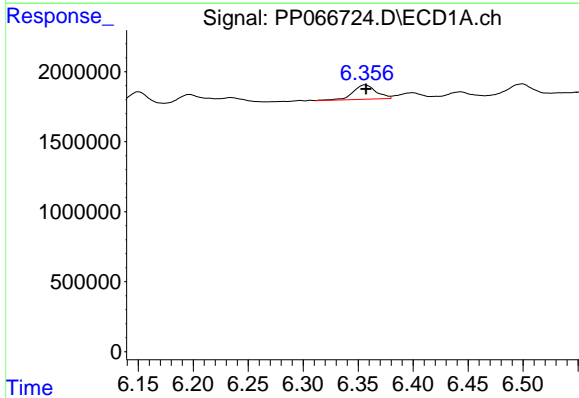
R.T.: 6.150 min  
 Delta R.T.: 0.000 min  
 Response: 1382686  
 Conc: 34.41 ng/ml

Instrument :  
 ECD\_P  
 ClientSampleId :  
 LOD-MDL-SOIL-01-QT3-2024



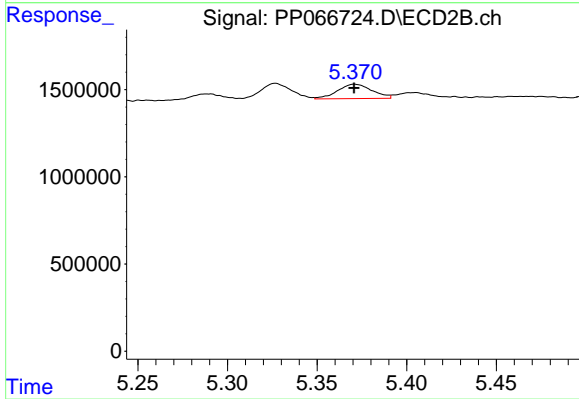
#22 AR-1248-2

R.T.: 5.327 min  
 Delta R.T.: 0.000 min  
 Response: 1094706  
 Conc: 30.31 ng/ml



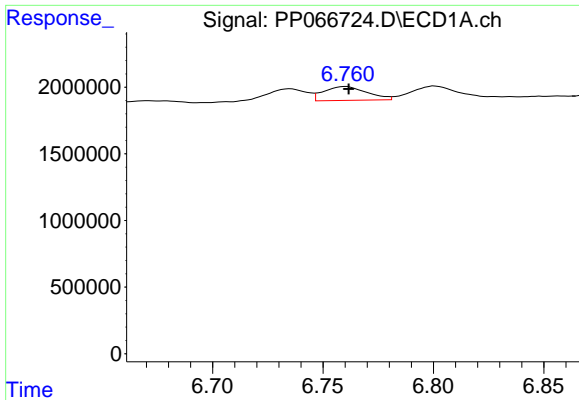
#23 AR-1248-3

R.T.: 6.356 min  
 Delta R.T.: 0.000 min  
 Response: 1501854  
 Conc: 34.44 ng/ml



#23 AR-1248-3

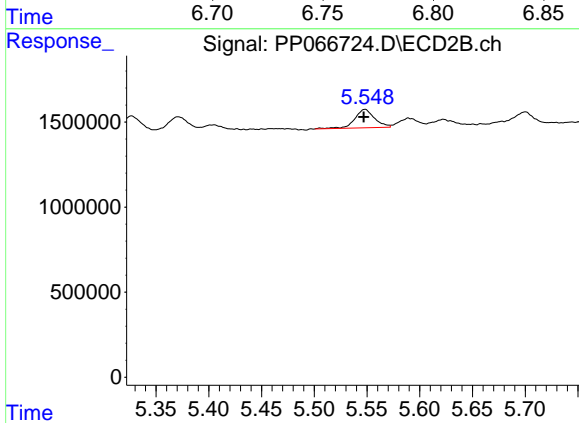
R.T.: 5.371 min  
 Delta R.T.: 0.000 min  
 Response: 1104959  
 Conc: 29.60 ng/ml



#24 AR-1248-4

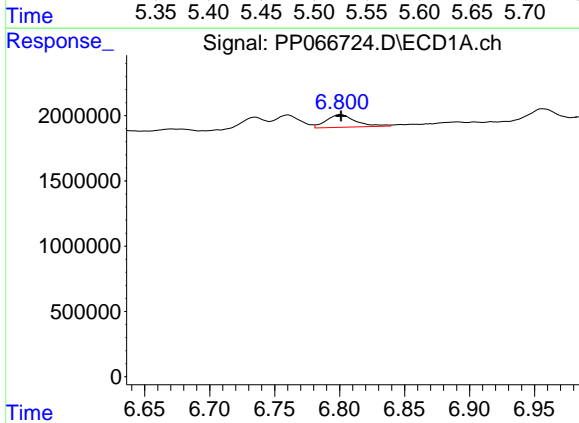
R.T.: 6.760 min  
 Delta R.T.: -0.001 min  
 Response: 1418169  
 Conc: 32.10 ng/ml

**Instrument :**  
 ECD\_P  
**ClientSampleId :**  
 LOD-MDL-SOIL-01-QT3-2024



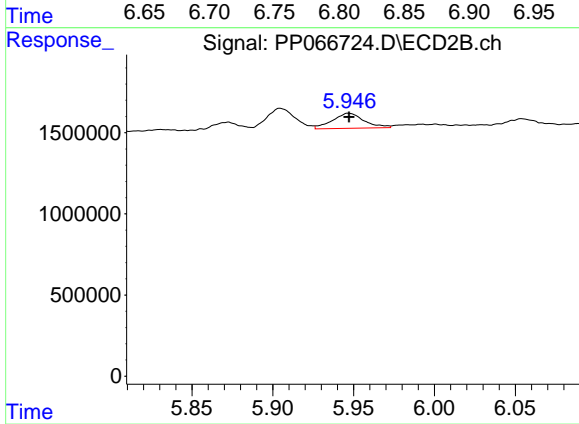
#24 AR-1248-4

R.T.: 5.548 min  
 Delta R.T.: 0.001 min  
 Response: 1416736  
 Conc: 32.11 ng/ml



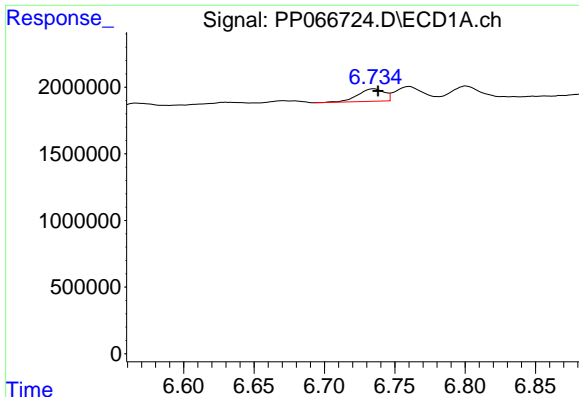
#25 AR-1248-5

R.T.: 6.801 min  
 Delta R.T.: 0.000 min  
 Response: 1504978  
 Conc: 32.83 ng/ml



#25 AR-1248-5

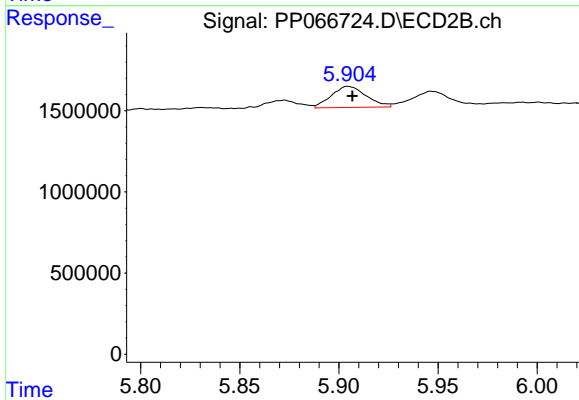
R.T.: 5.947 min  
 Delta R.T.: 0.000 min  
 Response: 1268978  
 Conc: 33.59 ng/ml



#26 AR-1254-1

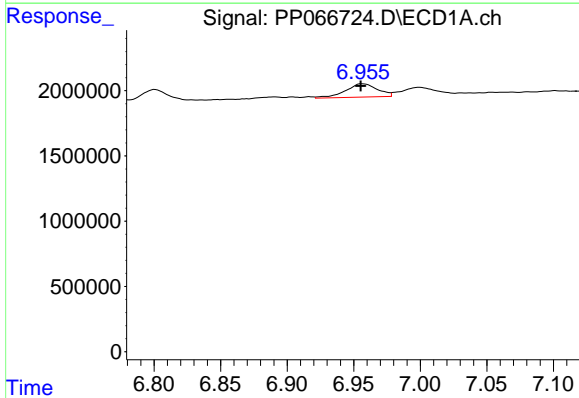
R.T.: 6.735 min  
 Delta R.T.: -0.003 min  
 Response: 1226483  
 Conc: 24.84 ng/ml

Instrument :  
 ECD\_P  
 ClientSampleId :  
 LOD-MDL-SOIL-01-QT3-2024



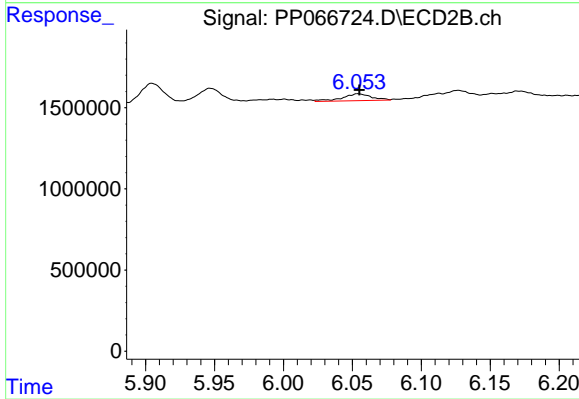
#26 AR-1254-1

R.T.: 5.905 min  
 Delta R.T.: -0.002 min  
 Response: 1586040  
 Conc: 26.48 ng/ml



#27 AR-1254-2

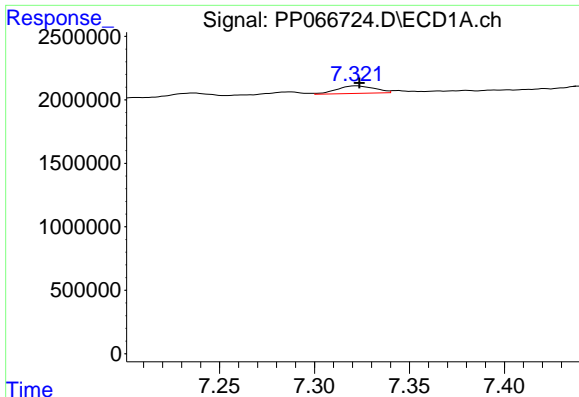
R.T.: 6.956 min  
 Delta R.T.: 0.000 min  
 Response: 1700440  
 Conc: 23.31 ng/ml



#27 AR-1254-2

R.T.: 6.054 min  
 Delta R.T.: -0.001 min  
 Response: 621941  
 Conc: 11.64 ng/ml

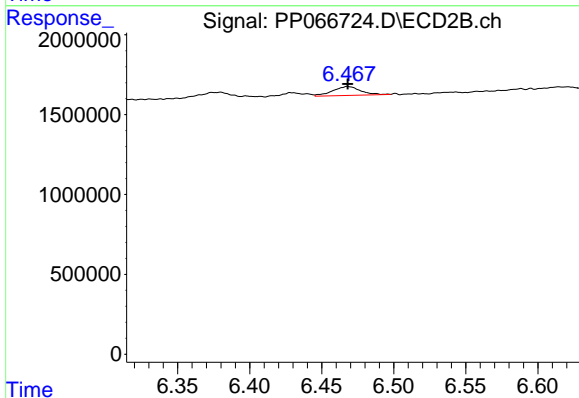




#28 AR-1254-3

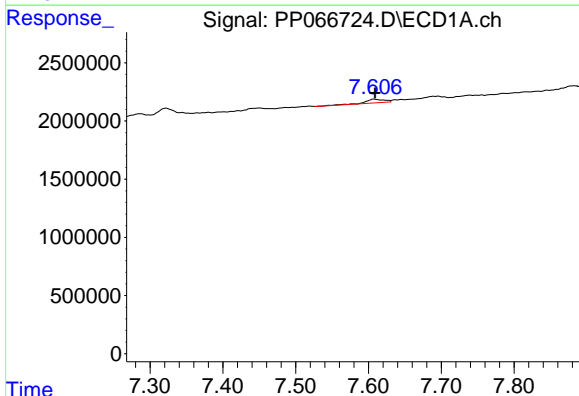
R.T.: 7.322 min  
 Delta R.T.: -0.002 min  
 Response: 813508  
 Conc: 11.64 ng/ml

Instrument :  
 ECD\_P  
 ClientSampleId :  
 LOD-MDL-SOIL-01-QT3-2024



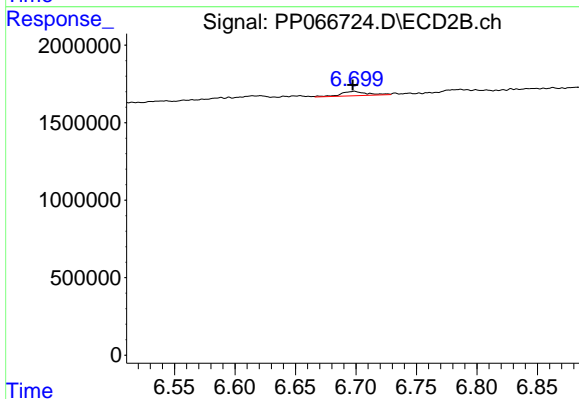
#28 AR-1254-3

R.T.: 6.468 min  
 Delta R.T.: 0.000 min  
 Response: 747108  
 Conc: 9.45 ng/ml



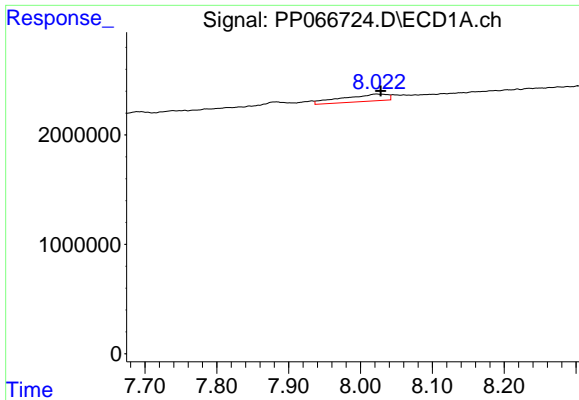
#29 AR-1254-4

R.T.: 7.607 min  
 Delta R.T.: -0.002 min  
 Response: 592457  
 Conc: 13.31 ng/ml



#29 AR-1254-4

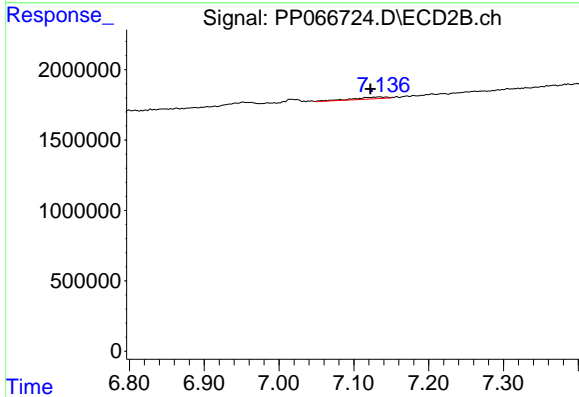
R.T.: 6.699 min  
 Delta R.T.: 0.001 min  
 Response: 430146  
 Conc: 10.64 ng/ml



#30 AR-1254-5

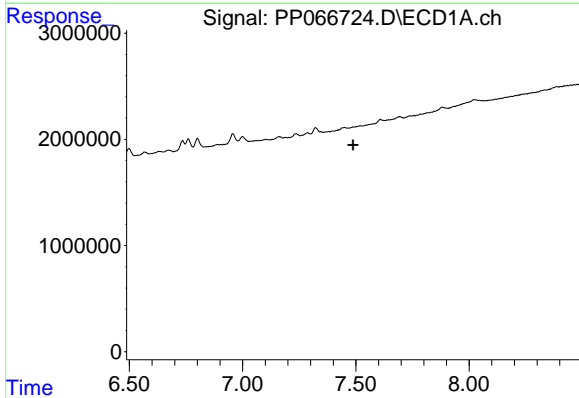
R.T.: 8.023 min  
 Delta R.T.: -0.006 min  
 Response: 2830832  
 Conc: 42.70 ng/ml

Instrument : ECD\_P  
 ClientSampleId : LOD-MDL-SOIL-01-QT3-2024



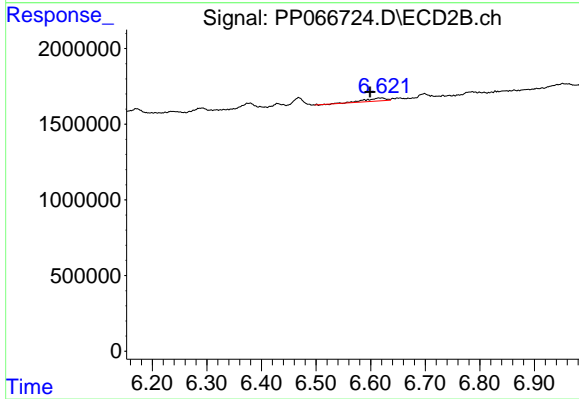
#30 AR-1254-5

R.T.: 7.135 min  
 Delta R.T.: 0.013 min  
 Response: 379683  
 Conc: 5.91 ng/ml



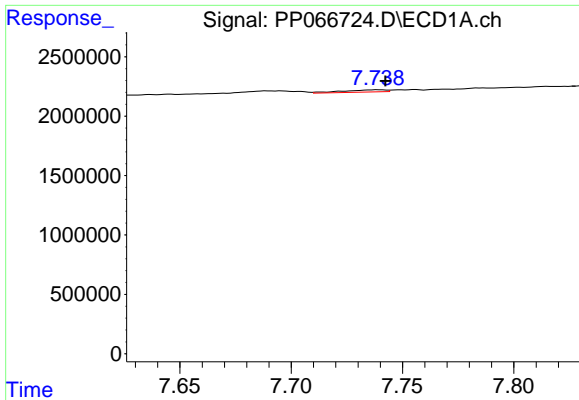
#31 AR-1260-1

R.T.: 0.000 min  
 Exp R.T. : 7.487 min  
 Response: 0  
 Conc: N.D.



#31 AR-1260-1

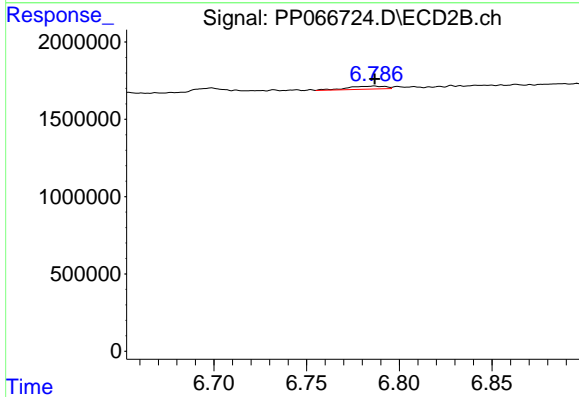
R.T.: 6.621 min  
 Delta R.T.: 0.022 min  
 Response: 533338  
 Conc: 9.02 ng/ml



#32 AR-1260-2

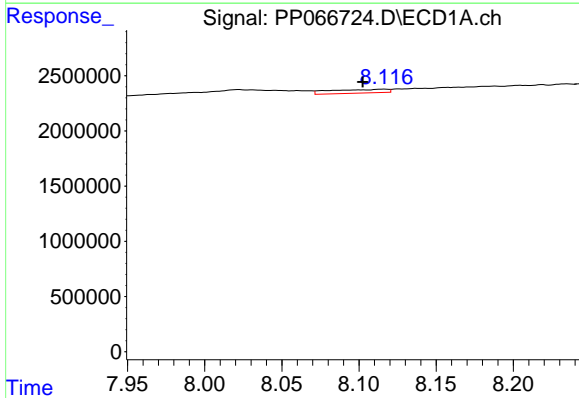
R.T.: 7.739 min  
 Delta R.T.: -0.003 min  
 Response: 247024  
 Conc: 3.88 ng/ml

Instrument :  
 ECD\_P  
 ClientSampleId :  
 LOD-MDL-SOIL-01-QT3-2024



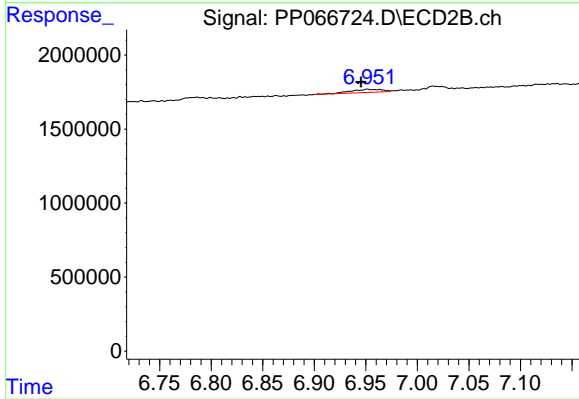
#32 AR-1260-2

R.T.: 6.786 min  
 Delta R.T.: 0.000 min  
 Response: 277495  
 Conc: 4.07 ng/ml



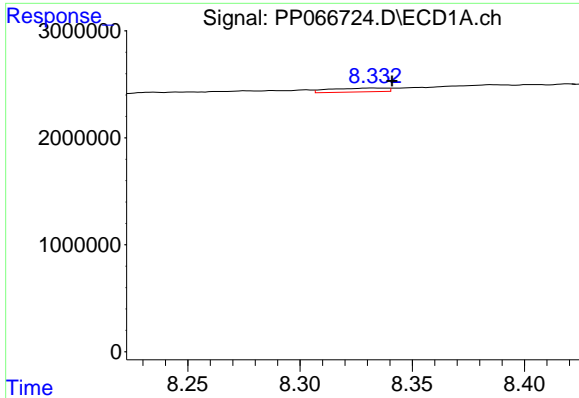
#33 AR-1260-3

R.T.: 8.116 min  
 Delta R.T.: 0.014 min  
 Response: 864846  
 Conc: 19.45 ng/ml



#33 AR-1260-3

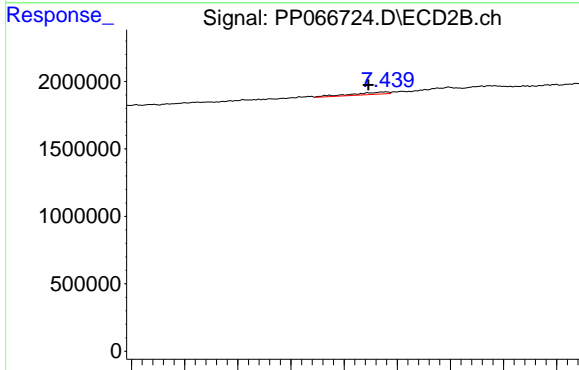
R.T.: 6.952 min  
 Delta R.T.: 0.006 min  
 Response: 445429  
 Conc: 6.86 ng/ml



#34 AR-1260-4

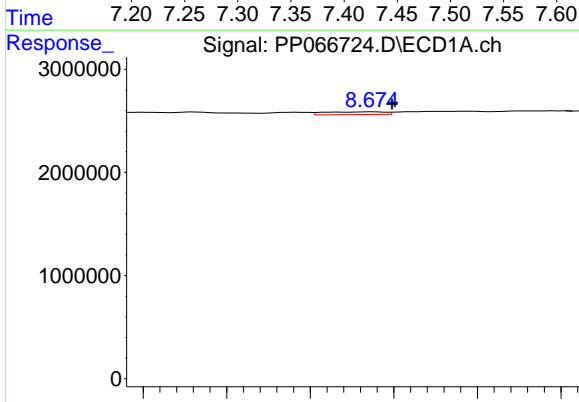
R.T.: 8.333 min  
 Delta R.T.: -0.008 min  
 Response: 635036  
 Conc: 12.03 ng/ml

Instrument :  
 ECD\_P  
 ClientSampleId :  
 LOD-MDL-SOIL-01-QT3-2024



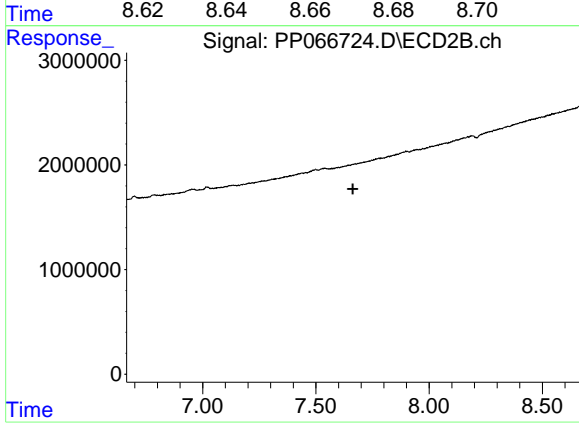
#34 AR-1260-4

R.T.: 7.439 min  
 Delta R.T.: 0.017 min  
 Response: 400532  
 Conc: 8.89 ng/ml



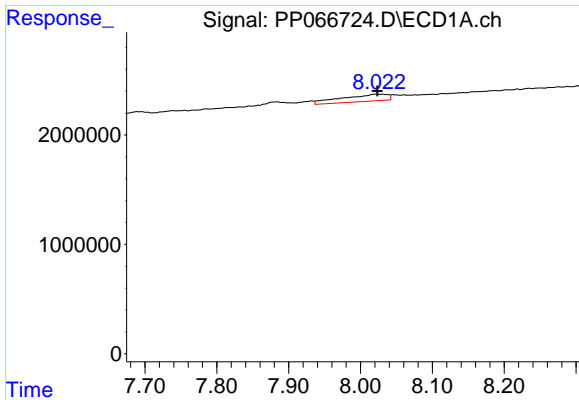
#35 AR-1260-5

R.T.: 8.675 min  
 Delta R.T.: -0.005 min  
 Response: 270976  
 Conc: 3.05 ng/ml



#35 AR-1260-5

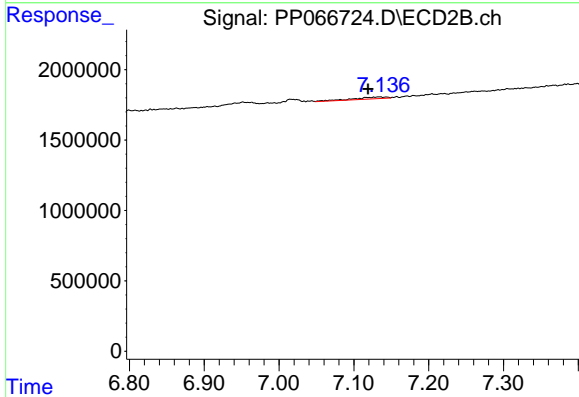
R.T.: 0.000 min  
 Exp R.T. : 7.664 min  
 Response: 0  
 Conc: N.D.



#36 AR-1262-1

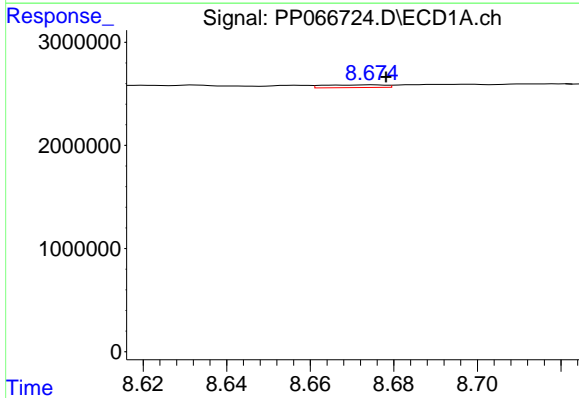
R.T.: 8.023 min  
 Delta R.T.: -0.001 min  
 Response: 2830832  
 Conc: 62.70 ng/ml

Instrument :  
 ECD\_P  
 ClientSampleId :  
 LOD-MDL-SOIL-01-QT3-2024



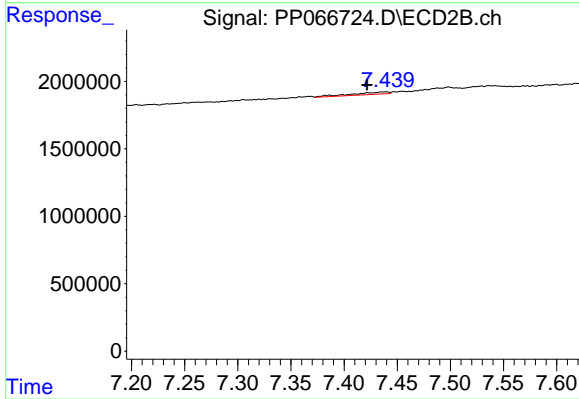
#36 AR-1262-1

R.T.: 7.135 min  
 Delta R.T.: 0.015 min  
 Response: 379683  
 Conc: 11.88 ng/ml



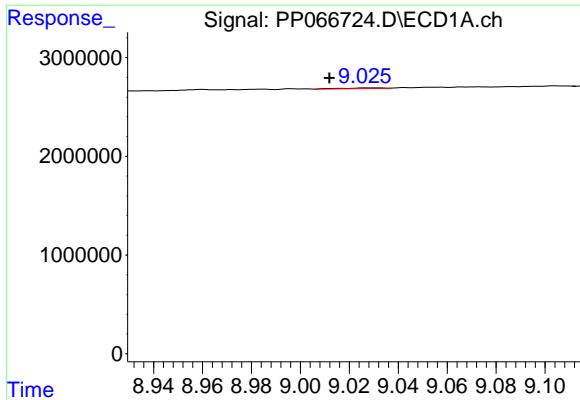
#37 AR-1262-2

R.T.: 8.675 min  
 Delta R.T.: -0.003 min  
 Response: 270976  
 Conc: 2.48 ng/ml



#37 AR-1262-2

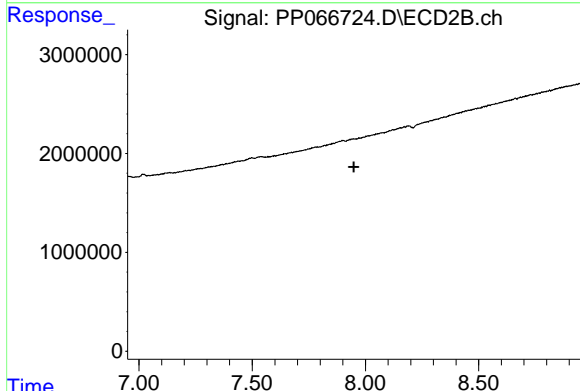
R.T.: 7.439 min  
 Delta R.T.: 0.018 min  
 Response: 400532  
 Conc: 6.42 ng/ml



#38 AR-1262-3

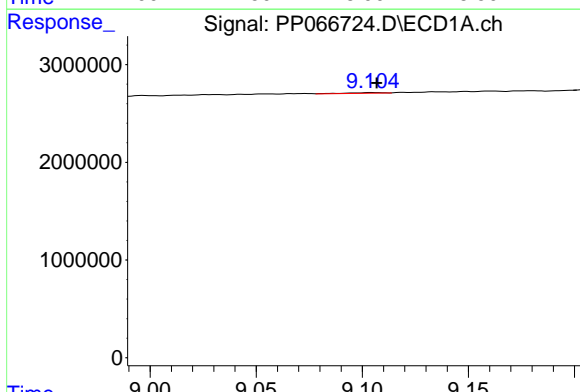
R.T.: 9.032 min  
 Delta R.T.: 0.020 min  
 Response: 80841  
 Conc: 1.14 ng/ml

Instrument : ECD\_P  
 ClientSampleId : LOD-MDL-SOIL-01-QT3-2024



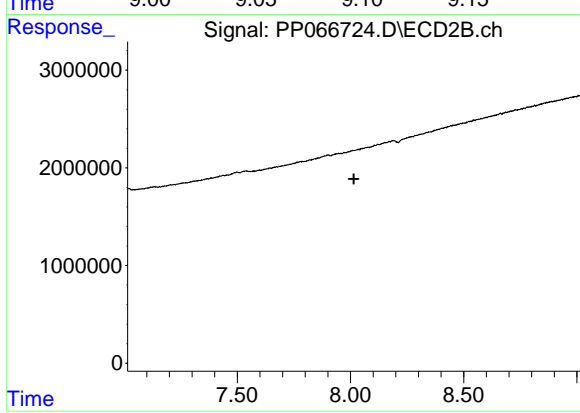
#38 AR-1262-3

R.T.: 7.947 min  
 Delta R.T.: -0.002 min  
 Response: -4421  
 Conc: N.D.



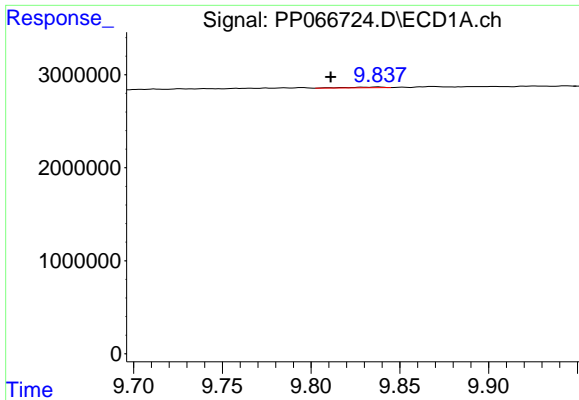
#39 AR-1262-4

R.T.: 9.105 min  
 Delta R.T.: -0.002 min  
 Response: 91808  
 Conc: 1.57 ng/ml



#39 AR-1262-4

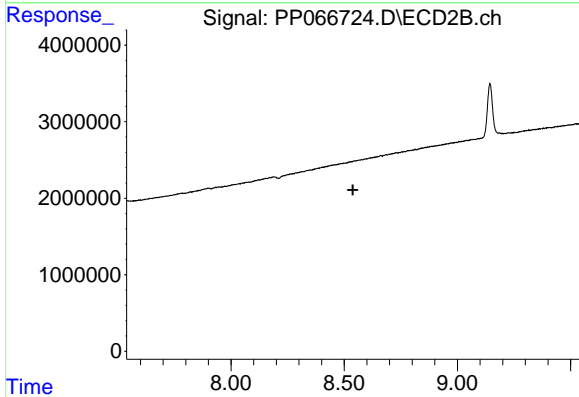
R.T.: 0.000 min  
 Exp R.T.: 8.015 min  
 Response: 0  
 Conc: N.D.



#40 AR-1262-5

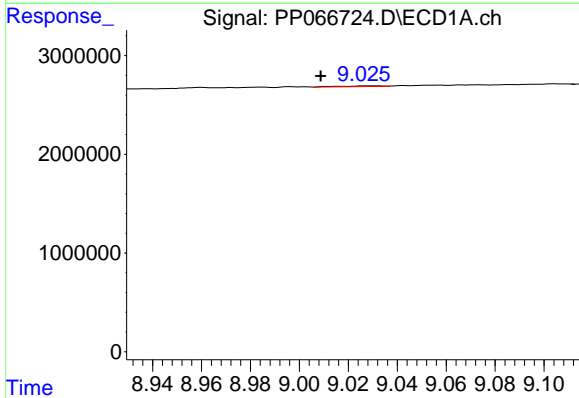
R.T.: 9.838 min  
 Delta R.T.: 0.027 min  
 Response: 108082  
 Conc: 3.24 ng/ml

Instrument :  
 ECD\_P  
 ClientSampleId :  
 LOD-MDL-SOIL-01-QT3-2024



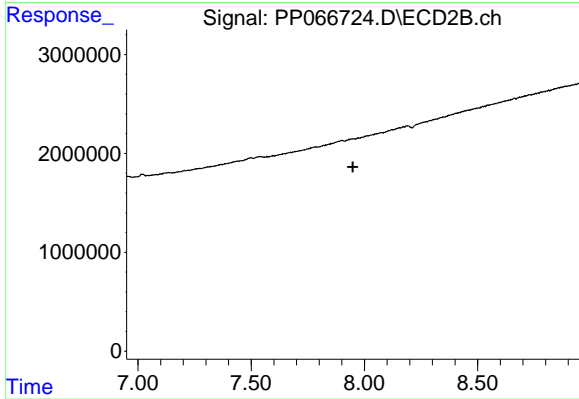
#40 AR-1262-5

R.T.: 0.000 min  
 Exp R.T. : 8.538 min  
 Response: 0  
 Conc: N.D.



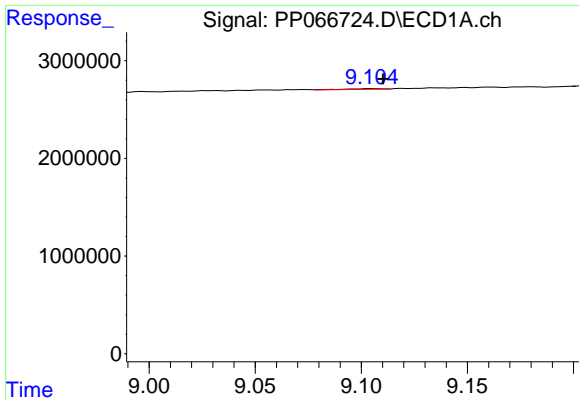
#41 AR-1268-1

R.T.: 9.032 min  
 Delta R.T.: 0.023 min  
 Response: 80841  
 Conc: 0.65 ng/ml



#41 AR-1268-1

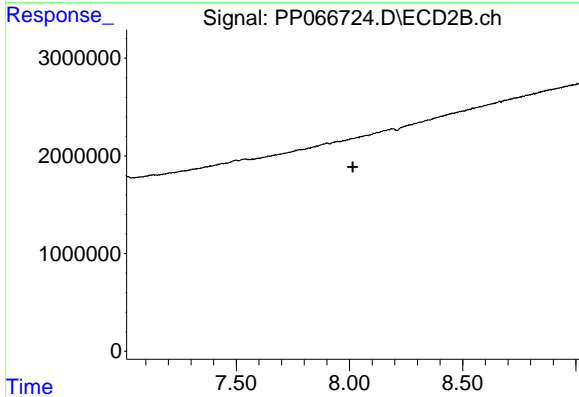
R.T.: 7.947 min  
 Delta R.T.: -0.003 min  
 Response: -4421  
 Conc: N.D.



#42 AR-1268-2

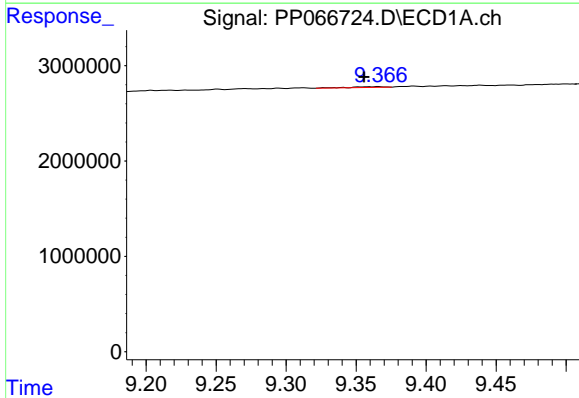
R.T.: 9.105 min  
 Delta R.T.: -0.006 min  
 Response: 91808  
 Conc: 0.83 ng/ml

Instrument :  
 ECD\_P  
 ClientSampleId :  
 LOD-MDL-SOIL-01-QT3-2024



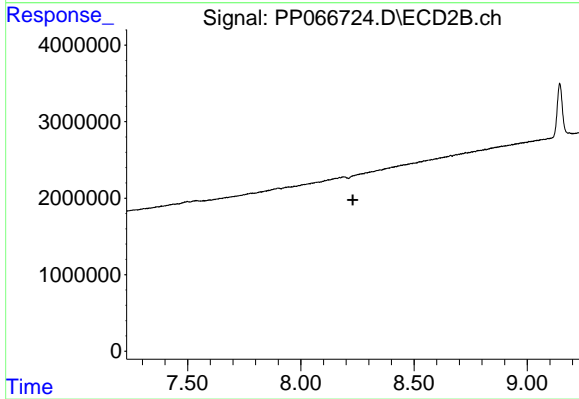
#42 AR-1268-2

R.T.: 0.000 min  
 Exp R.T. : 8.015 min  
 Response: 0  
 Conc: N.D.



#43 AR-1268-3

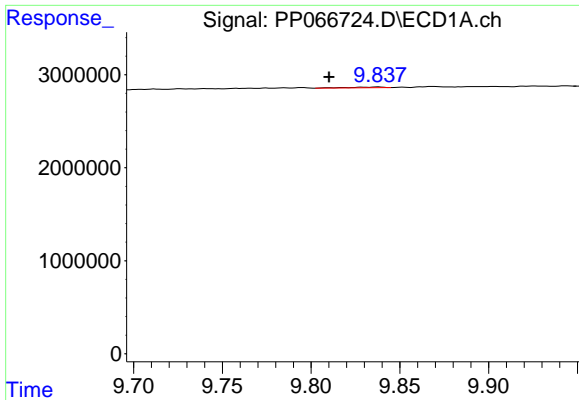
R.T.: 9.366 min  
 Delta R.T.: 0.011 min  
 Response: 129666  
 Conc: 1.31 ng/ml



#43 AR-1268-3

R.T.: 0.000 min  
 Exp R.T. : 8.230 min  
 Response: 0  
 Conc: N.D.

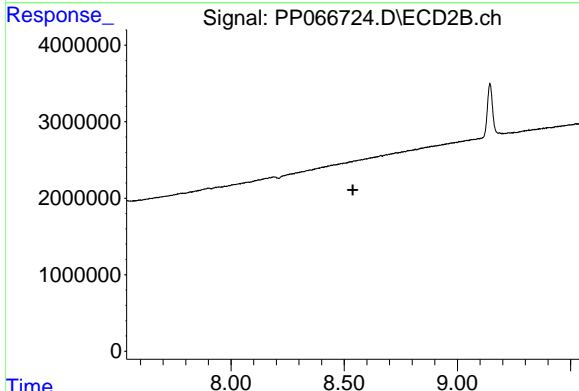




#44 AR-1268-4

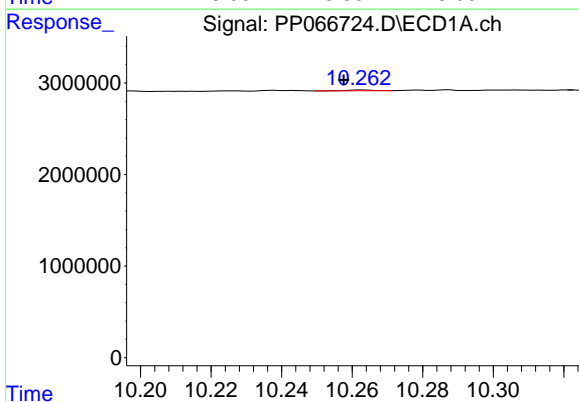
R.T.: 9.838 min  
 Delta R.T.: 0.028 min  
 Response: 108082  
 Conc: 3.55 ng/ml

Instrument :  
 ECD\_P  
 ClientSampleId :  
 LOD-MDL-SOIL-01-QT3-2024



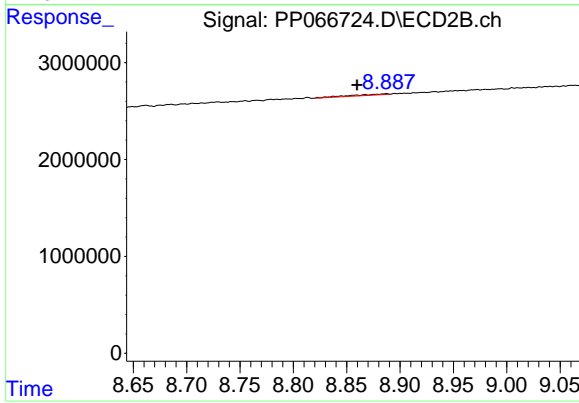
#44 AR-1268-4

R.T.: 0.000 min  
 Exp R.T. : 8.538 min  
 Response: 0  
 Conc: N.D.



#45 AR-1268-5

R.T.: 10.263 min  
 Delta R.T.: 0.005 min  
 Response: 42416  
 Conc: 0.15 ng/ml



#45 AR-1268-5

R.T.: 8.887 min  
 Delta R.T.: 0.027 min  
 Response: 287754  
 Conc: 0.99 ng/ml