

Data Path : Z:\pestpcbsrv\HPCHEM1\ECD P\Data\PP082118\
 Data File : PP027118.D
 Signal(s) : Signal #1: ECD1A.CH Signal #2: ECD2B.CH
 Acq On : 21 Aug 2018 10:07
 Operator : EI\MA
 Sample : HSTDCCC750
 Misc :
 ALS Vial : 3 Sample Multiplier: 1

Instrument :
 ECD_P
 ClientSampleId :

Integration File signal 1: autoint1.e
 Integration File signal 2: autoint2.e
 Quant Time: Aug 21 10:26:44 2018
 Quant Method : Z:\pestpcbsrv\HPCHEM1\ECD_P\methods\PP073018.M
 Quant Title : 8080.M
 QLast Update : Tue Jul 31 01:31:14 2018
 Response via : Initial Calibration
 Integrator: ChemStation 6890 Scale Mode: Large solvent peaks clipped

Volume Inj. : 2 ul
 Signal #1 Phase : ZB-CLPesticides-1 Signal #2 Phase: ZB-CLPesticides-2
 Signal #1 Info : 30M x 0.32mm x0.5 Signal #2 Info : 30M x 0.32mm x 0.25µm

Compound	RT#1	RT#2	Resp#1	Resp#2	ng/ml	ng/ml

System Monitoring Compounds						
4) S 2,4-DCAA	12.043	12.155	185.4E6	307.6E6	776.131	759.637
Target Compounds						
1) T Dalapon	3.311	2.983	385.1E6	369.6E6	655.547	657.801
2) T 3,5-DICHL...	10.457	10.248	316.0E6	379.4E6	686.487	709.134
3) T 4-Nitroph...	11.617	11.296	302.5E6	175.7E6	659.509	725.269
5) T DICAMBA	12.365	12.467	1011.3E6	1162.8E6	715.882	714.529
6) T MCPPE	12.710	12.660	30625253	67548914	78.937	78.382
7) T MCPA	12.953	13.049	49958444	97482400	74.449	77.496
8) T DICHLORPROP	13.562	13.581	222.0E6	282.4E6	702.416	727.674
9) T 2,4-D	13.910	14.064	277.2E6	383.5E6	709.582	727.203
10) T Pentachlo...	14.329	14.678	5452.8E6	4802.1E6	716.442	719.885
11) T 2,4,5-TP ...	15.192	15.248	2059.1E6	1904.1E6	717.704	733.730
12) T 2,4,5-T	15.578	15.885	1827.6E6	1606.3E6	716.214	737.300
13) T 2,4-DB	16.340	16.488	160.2E6	209.9E6	732.751	736.507
14) T DINOSEB	17.832	16.883	1431.9E6	1317.0E6	708.041	729.720
15) T Picloram	17.587	18.255	2895.2E6	2528.1E6	701.017	733.006
16) T DCPA	18.197	18.142	2901.6E6	2374.6E6	723.357	737.804

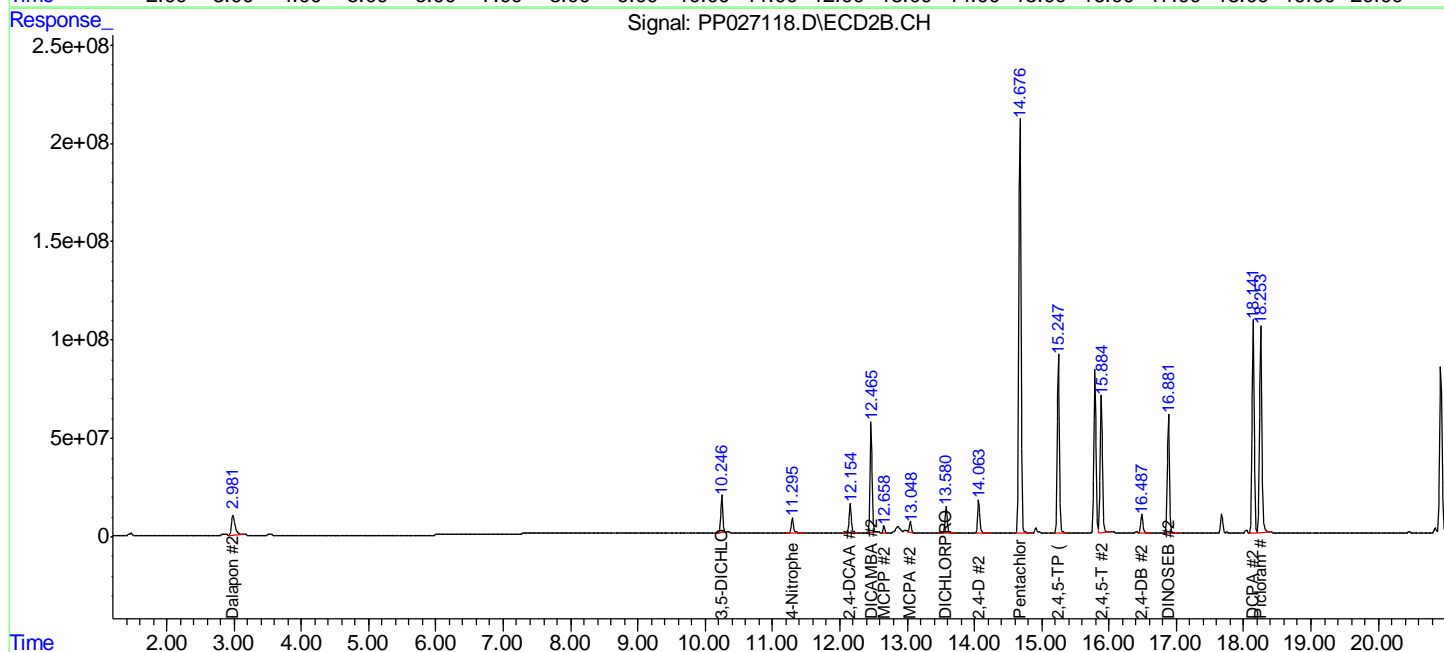
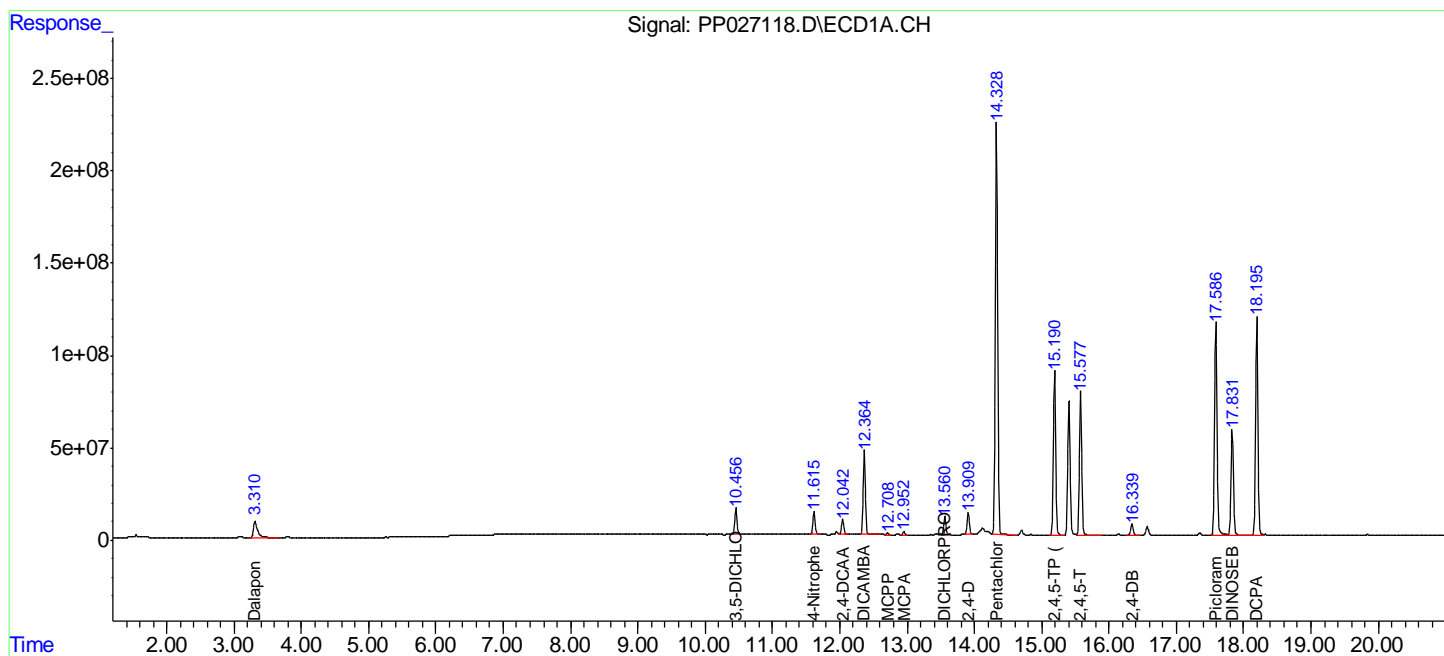
(f)=RT Delta > 1/2 Window (#)=Amounts differ by > 25% (m)=manual int.

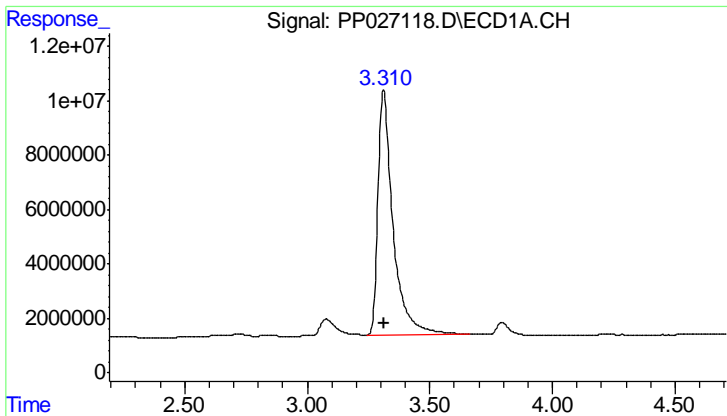
Data Path : Z:\pestpcbsrv\HPCHEM1\ECD P\Data\PP082118\
 Data File : PP027118.D
 Signal(s) : Signal #1: ECD1A.CH Signal #2: ECD2B.CH
 Acq On : 21 Aug 2018 10:07
 Operator : EI\MA
 Sample : HSTDCCC750
 Misc :
 ALS Vial : 3 Sample Multiplier: 1

Instrument :
 ECD_P
 ClientSampled :

Integration File signal 1: autoint1.e
 Integration File signal 2: autoint2.e
 Quant Time: Aug 21 10:26:44 2018
 Quant Method : Z:\pestpcbsrv\HPCHEM1\ECD_P\methods\PP073018.M
 Quant Title : 8080.M
 QLast Update : Tue Jul 31 01:31:14 2018
 Response via : Initial Calibration
 Integrator: ChemStation 6890 Scale Mode: Large solvent peaks clipped

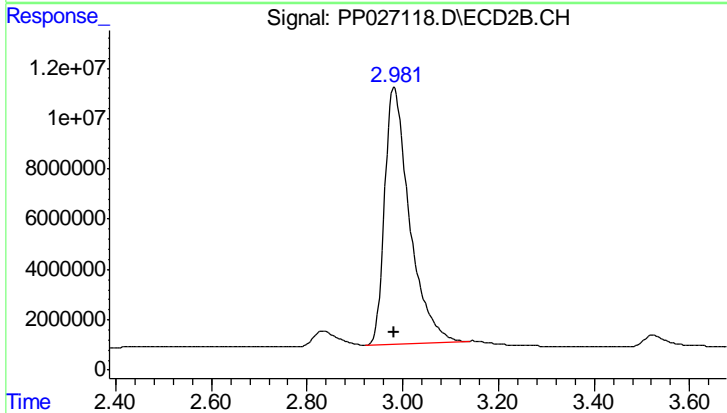
Volume Inj. : 2 ul
 Signal #1 Phase : ZB-CLPesticides-1 Signal #2 Phase: ZB-CLPesticides-2
 Signal #1 Info : 30M x 0.32mm x0.5 Signal #2 Info : 30M x 0.32mm x 0.25µm



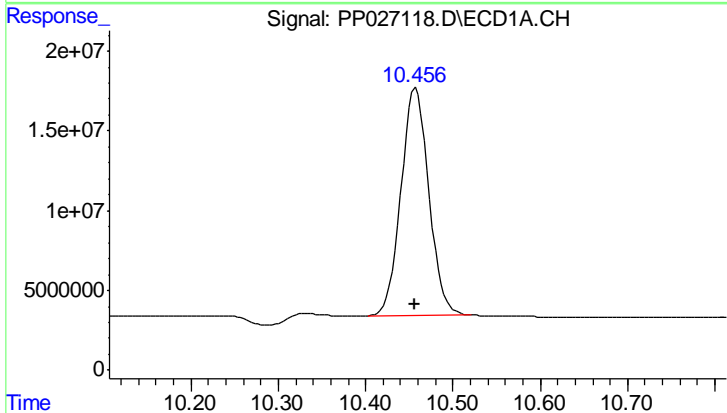


#1 Dalapon
 R.T.: 3.311 min
 Delta R.T.: 0.000 min
 Response: 385142788
 Conc: 655.55 ng/ml

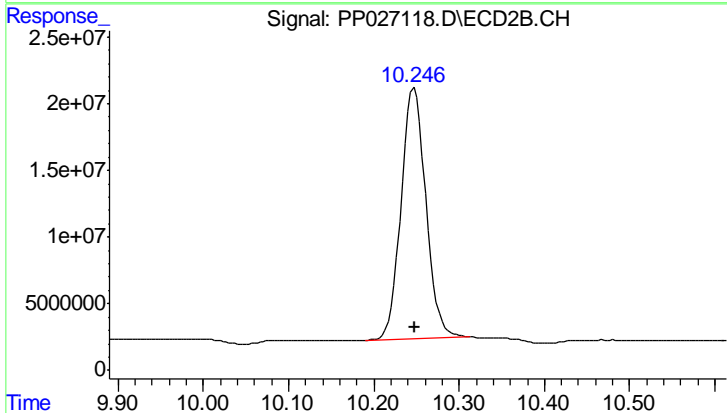
Instrument :
 ECD_P
 ClientSampleId :



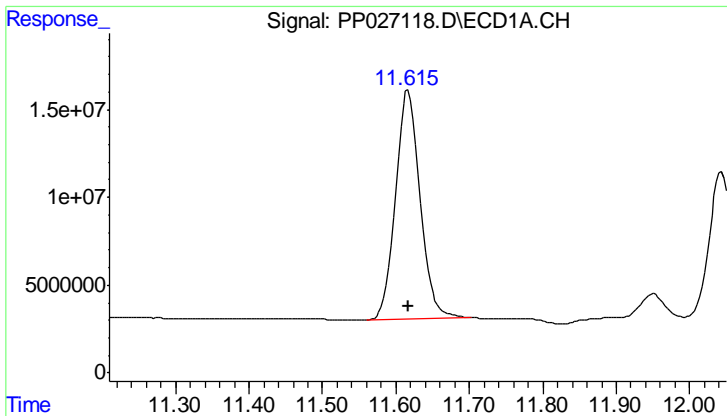
#1 Dalapon
 R.T.: 2.983 min
 Delta R.T.: 0.000 min
 Response: 369578861
 Conc: 657.80 ng/ml



#2 3,5-DICHLOROBENZOIC ACID
 R.T.: 10.457 min
 Delta R.T.: 0.000 min
 Response: 315984027
 Conc: 686.49 ng/ml

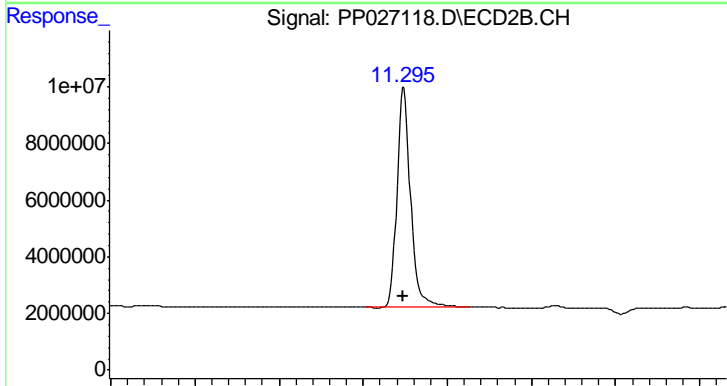


#2 3,5-DICHLOROBENZOIC ACID
 R.T.: 10.248 min
 Delta R.T.: 0.000 min
 Response: 379399196
 Conc: 709.13 ng/ml

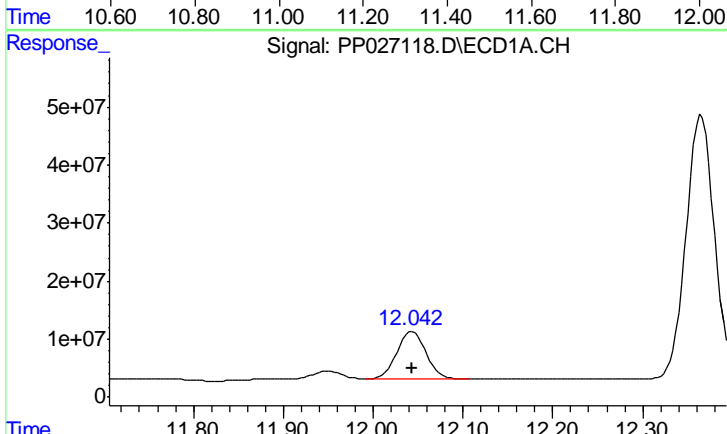


#3 4-Nitrophenol
 R.T.: 11.617 min
 Delta R.T.: 0.000 min
 Response: 302498726
 Conc: 659.51 ng/ml

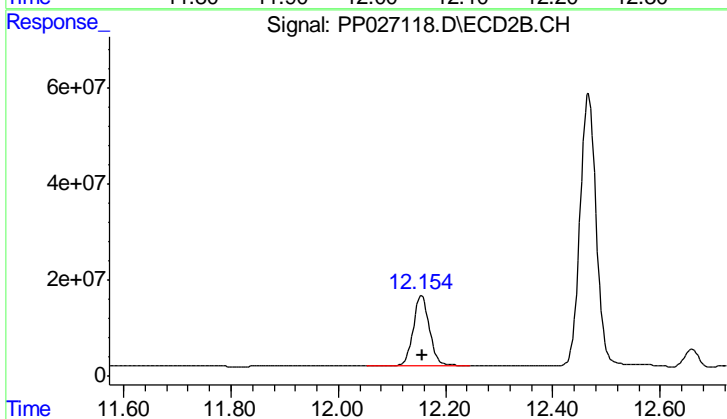
Instrument :
 ECD_P
 ClientSampled :



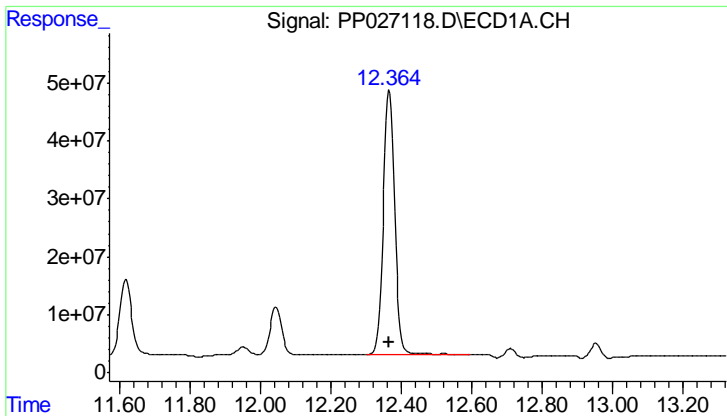
#3 4-Nitrophenol
 R.T.: 11.296 min
 Delta R.T.: 0.000 min
 Response: 175692139
 Conc: 725.27 ng/ml



#4 2,4-DCAA
 R.T.: 12.043 min
 Delta R.T.: 0.000 min
 Response: 185357757
 Conc: 776.13 ng/ml



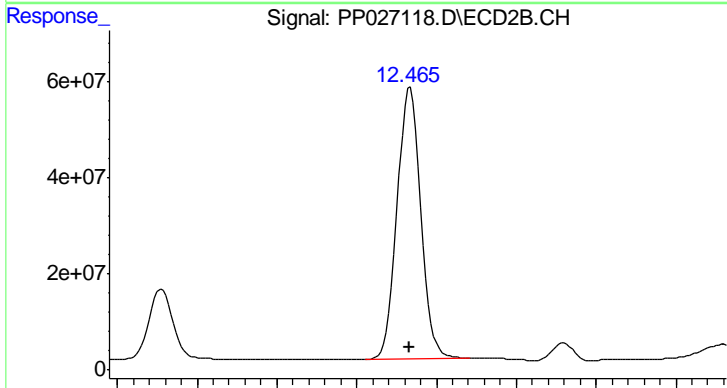
#4 2,4-DCAA
 R.T.: 12.155 min
 Delta R.T.: 0.000 min
 Response: 307601170
 Conc: 759.64 ng/ml



#5 DICAMBA

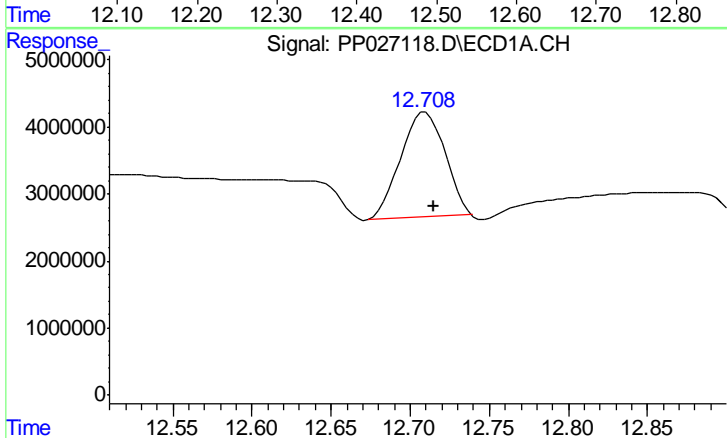
R.T.: 12.365 min
 Delta R.T.: 0.000 min
 Response: 1011271160
 Conc: 715.88 ng/ml

Instrument :
 ECD_P
 ClientSampled :



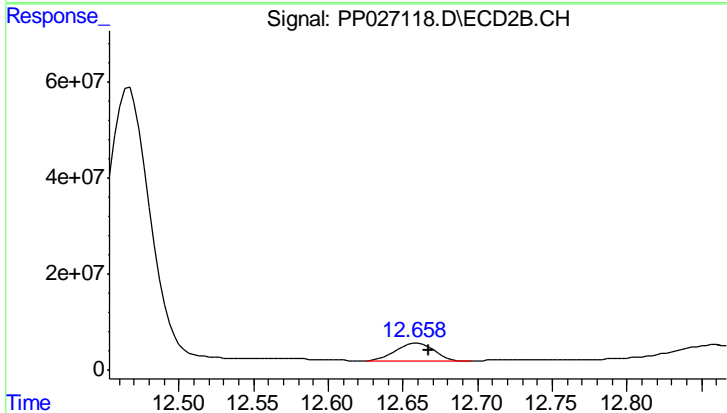
#5 DICAMBA

R.T.: 12.467 min
 Delta R.T.: 0.000 min
 Response: 1162779827
 Conc: 714.53 ng/ml



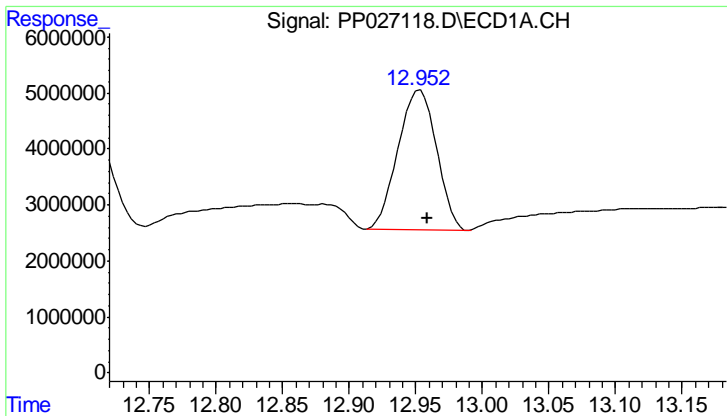
#6 MCPP

R.T.: 12.710 min
 Delta R.T.: -0.005 min
 Response: 30625253
 Conc: 78.94 ug/ml



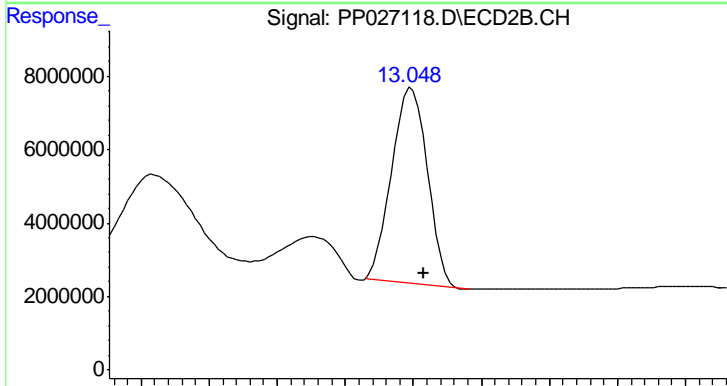
#6 MCPP

R.T.: 12.660 min
 Delta R.T.: -0.007 min
 Response: 67548914
 Conc: 78.38 ug/ml

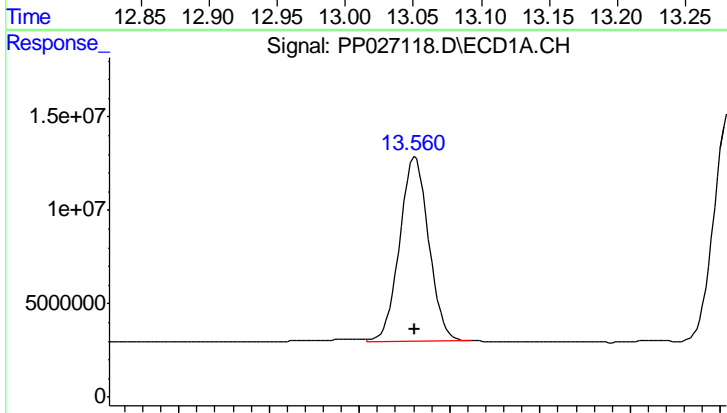


#7 MCPA
 R.T.: 12.953 min
 Delta R.T.: -0.006 min
 Response: 49958444
 Conc: 74.45 ug/ml

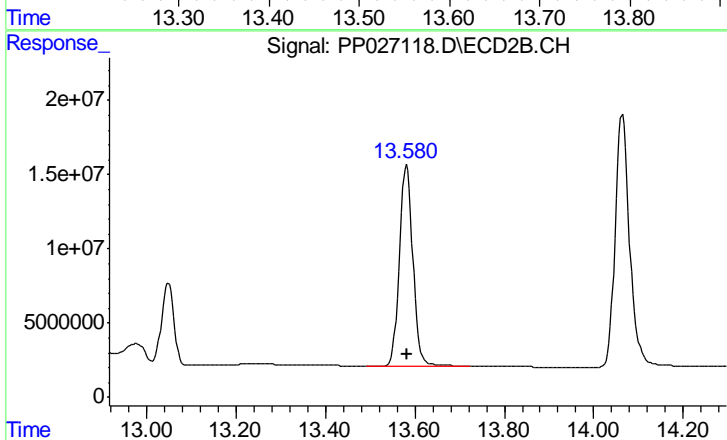
Instrument :
 ECD_P
 ClientSampled :



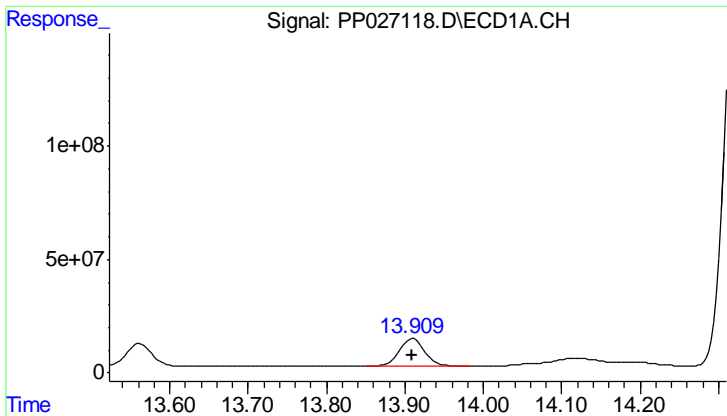
#7 MCPA
 R.T.: 13.049 min
 Delta R.T.: -0.008 min
 Response: 97482400
 Conc: 77.50 ug/ml



#8 DICHLORPROP
 R.T.: 13.562 min
 Delta R.T.: 0.000 min
 Response: 222010796
 Conc: 702.42 ng/ml

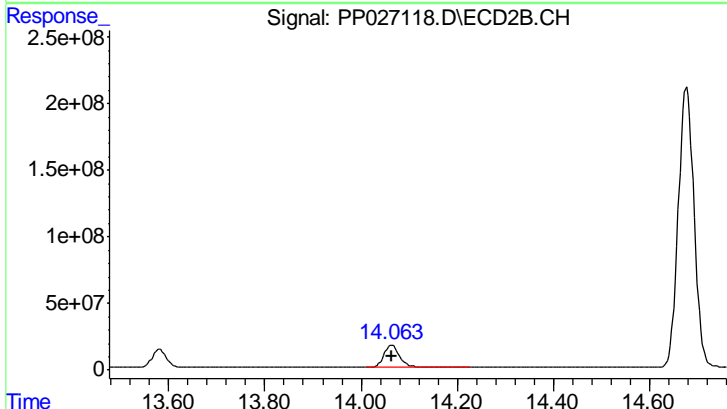


#8 DICHLORPROP
 R.T.: 13.581 min
 Delta R.T.: 0.000 min
 Response: 282428478
 Conc: 727.67 ng/ml

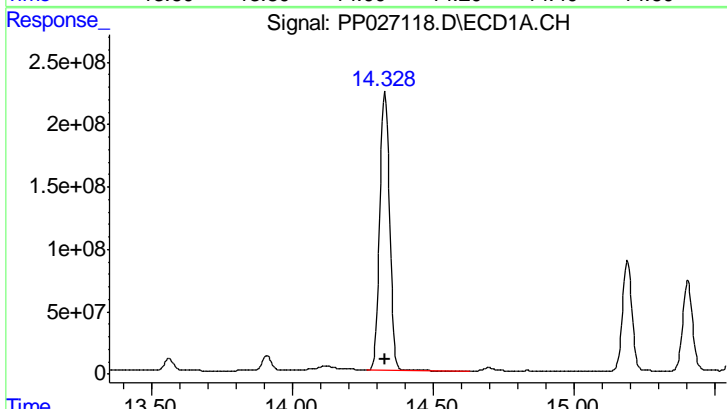


#9 2,4-D
 R.T.: 13.910 min
 Delta R.T.: 0.000 min
 Response: 277245410
 Conc: 709.58 ng/ml

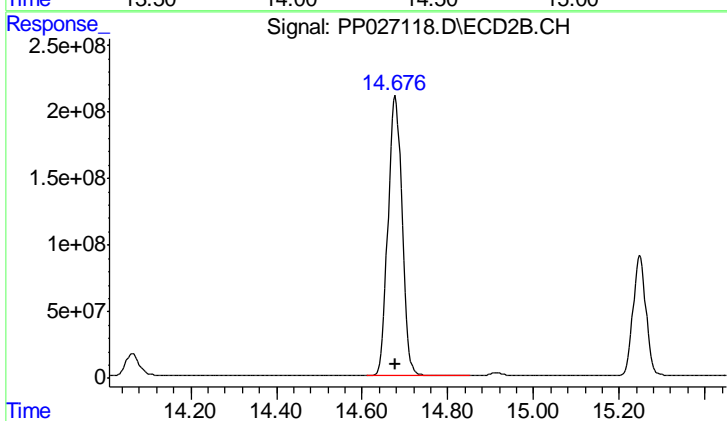
Instrument :
 ECD_P
 ClientSampleId :



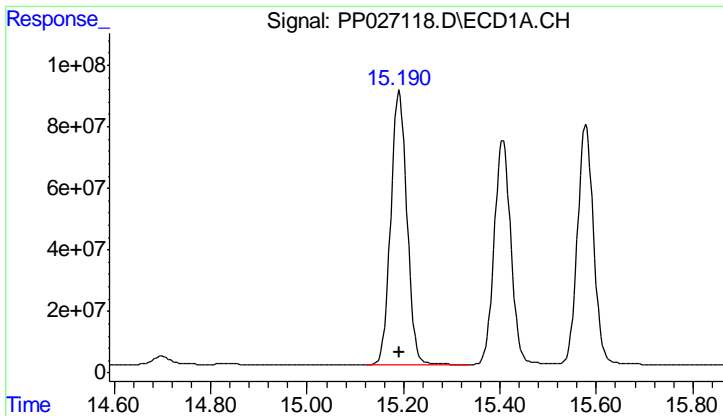
#9 2,4-D
 R.T.: 14.064 min
 Delta R.T.: 0.000 min
 Response: 383526576
 Conc: 727.20 ng/ml



#10 Pentachlorophenol
 R.T.: 14.329 min
 Delta R.T.: 0.000 min
 Response: 5452794624
 Conc: 716.44 ng/ml

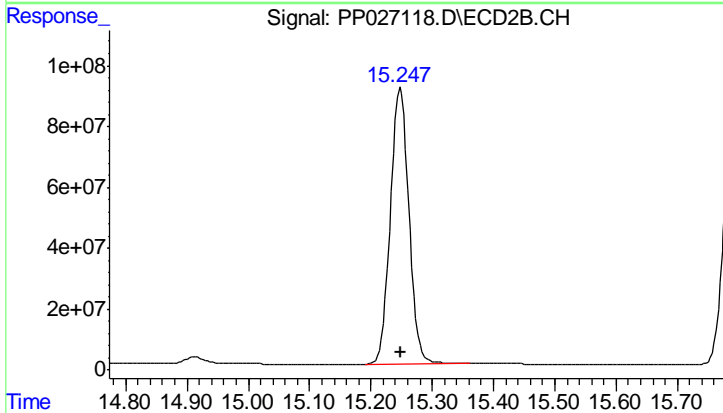


#10 Pentachlorophenol
 R.T.: 14.678 min
 Delta R.T.: -0.001 min
 Response: 4802093755
 Conc: 719.89 ng/ml

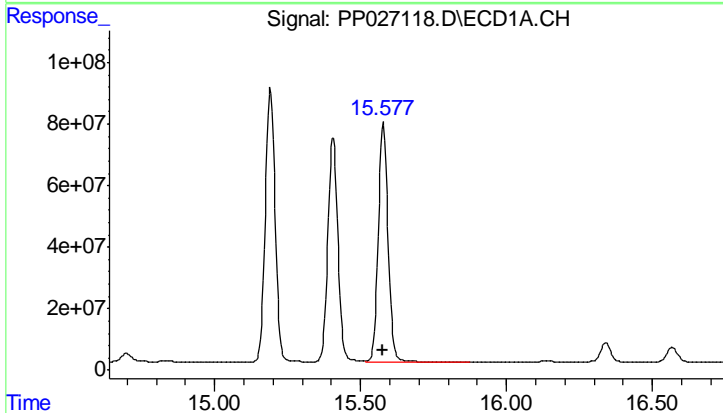


#11 2,4,5-TP (SILVEX)
 R.T.: 15.192 min
 Delta R.T.: 0.000 min
 Response: 2059136460
 Conc: 717.70 ng/ml

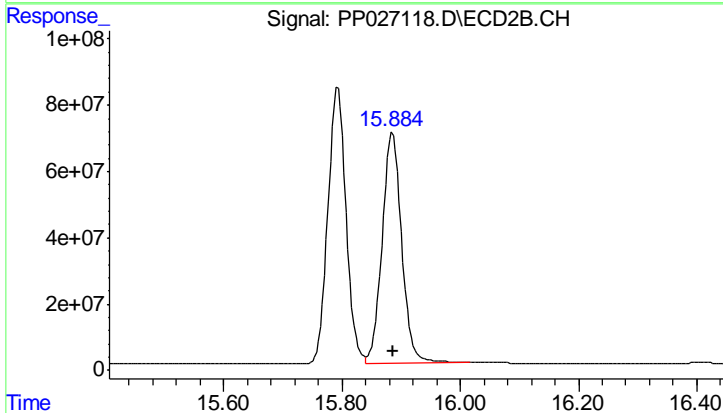
Instrument :
 ECD_P
 ClientSampleId :



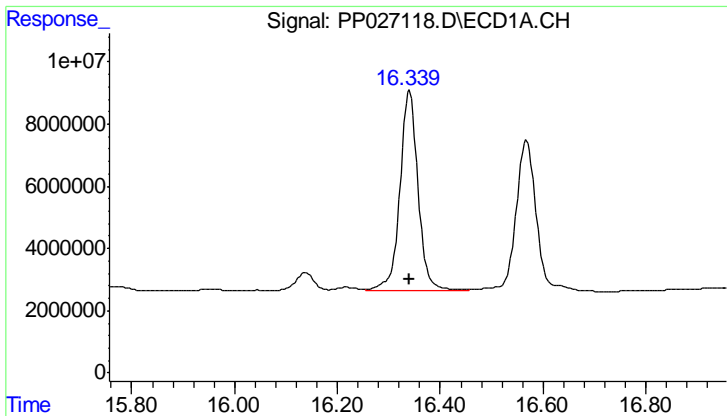
#11 2,4,5-TP (SILVEX)
 R.T.: 15.248 min
 Delta R.T.: 0.000 min
 Response: 1904122560
 Conc: 733.73 ng/ml



#12 2,4,5-T
 R.T.: 15.578 min
 Delta R.T.: 0.000 min
 Response: 1827570459
 Conc: 716.21 ng/ml



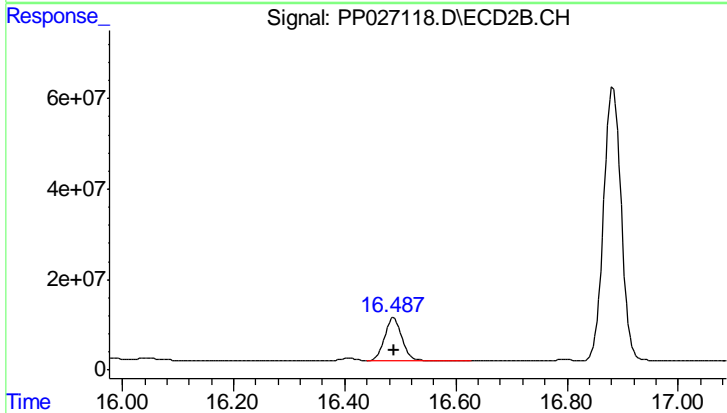
#12 2,4,5-T
 R.T.: 15.885 min
 Delta R.T.: 0.000 min
 Response: 1606294021
 Conc: 737.30 ng/ml



#13 2,4-DB

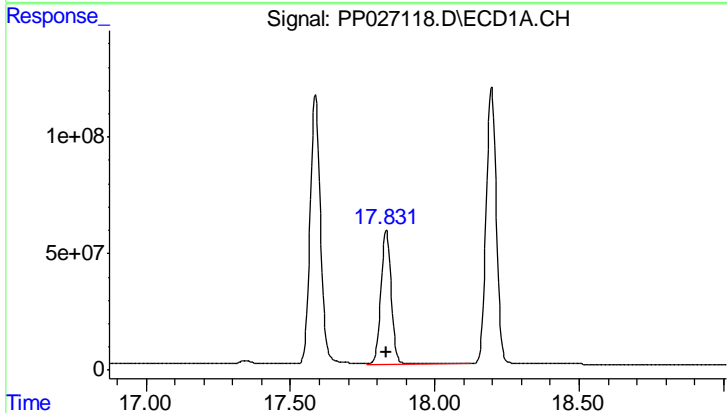
R.T.: 16.340 min
 Delta R.T.: 0.000 min
 Response: 160228178
 Conc: 732.75 ng/ml

Instrument :
 ECD_P
 ClientSampled :



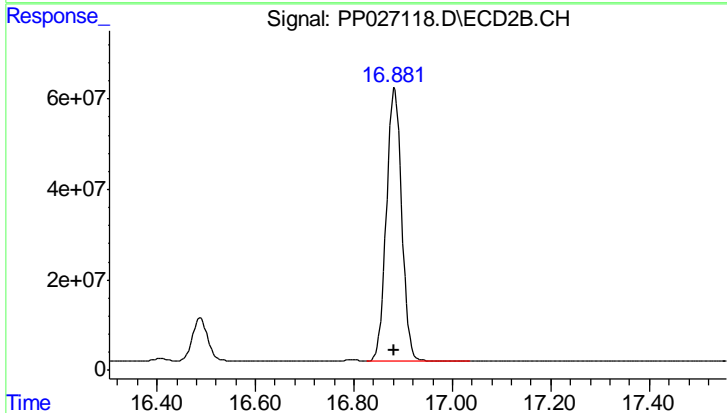
#13 2,4-DB

R.T.: 16.488 min
 Delta R.T.: 0.000 min
 Response: 209873680
 Conc: 736.51 ng/ml



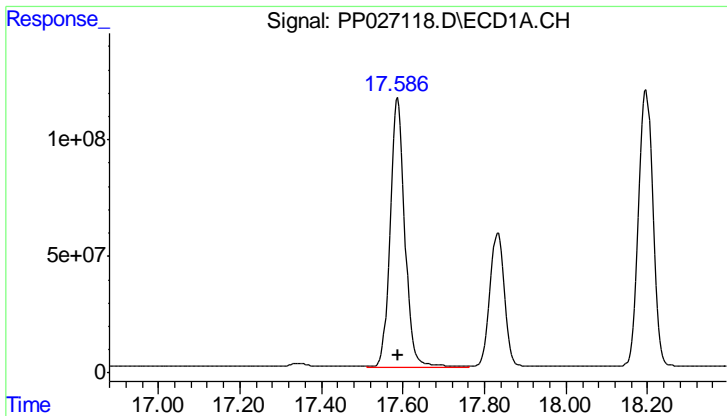
#14 DINOSEB

R.T.: 17.832 min
 Delta R.T.: 0.001 min
 Response: 1431947446
 Conc: 708.04 ng/ml



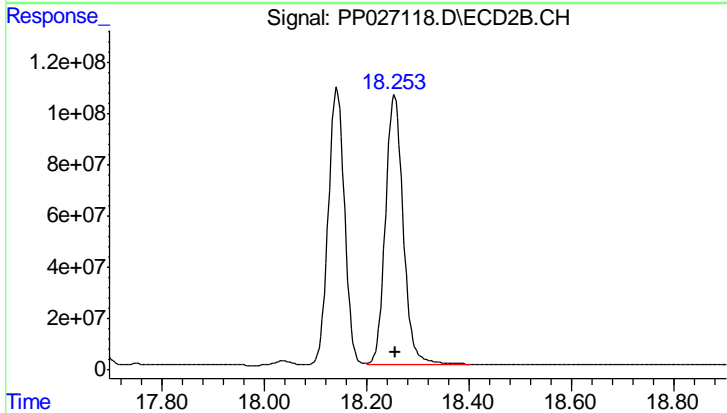
#14 DINOSEB

R.T.: 16.883 min
 Delta R.T.: 0.000 min
 Response: 1317006259
 Conc: 729.72 ng/ml

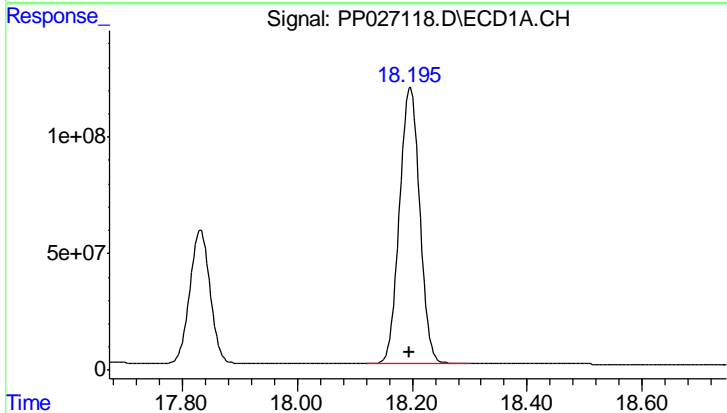


#15 Picloram
 R.T.: 17.587 min
 Delta R.T.: 0.000 min
 Response: 2895202989
 Conc: 701.02 ng/ml

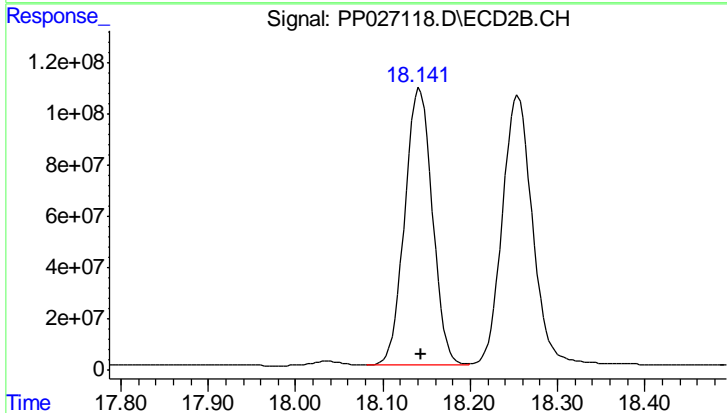
Instrument :
 ECD_P
 ClientSampleId :



#15 Picloram
 R.T.: 18.255 min
 Delta R.T.: 0.000 min
 Response: 2528102177
 Conc: 733.01 ng/ml



#16 DCPA
 R.T.: 18.197 min
 Delta R.T.: 0.000 min
 Response: 2901641147
 Conc: 723.36 ng/ml



#16 DCPA
 R.T.: 18.142 min
 Delta R.T.: 0.000 min
 Response: 2374584741
 Conc: 737.80 ng/ml