

Data Path : Z:\pestpcbsrv\HPCHEM1\ECD P\Data\PP082118\
 Data File : PP027131.D
 Signal(s) : Signal #1: ECD1A.CH Signal #2: ECD2B.CH
 Acq On : 21 Aug 2018 19:57
 Operator : EI\MA
 Sample : J4542-03
 Misc :
 ALS Vial : 14 Sample Multiplier: 1

Instrument :
 ECD_P
 ClientSampleId :
 FK-GF-02-024-B

Manual Integrations
 APPROVED

Sohil
 8/22/2018 1:07:28 PM

Integration File signal 1: autoint1.e
 Integration File signal 2: autoint2.e
 Quant Time: Aug 22 03:17:51 2018
 Quant Method : Z:\pestpcbsrv\HPCHEM1\ECD_P\methods\PP073018.M
 Quant Title : 8080.M
 QLast Update : Tue Jul 31 01:31:14 2018
 Response via : Initial Calibration
 Integrator: ChemStation 6890 Scale Mode: Large solvent peaks clipped

Volume Inj. : 2 µl
 Signal #1 Phase : ZB-CLPesticides-1 Signal #2 Phase: ZB-CLPesticides-2
 Signal #1 Info : 30M x 0.32mm x0.5 Signal #2 Info : 30M x 0.32mm x 0.25µm

Compound	RT#1	RT#2	Resp#1	Resp#2	nq/ml	nq/ml
----------	------	------	--------	--------	-------	-------

 System Monitoring Compounds

4) S	2,4-DCAA	12.043	12.157	75795469	139.9E6	317.371m 345.527
------	----------	--------	--------	----------	---------	------------------

Target Compounds

(f)=RT Delta > 1/2 Window (#)=Amounts differ by > 25% (m)=manual int.

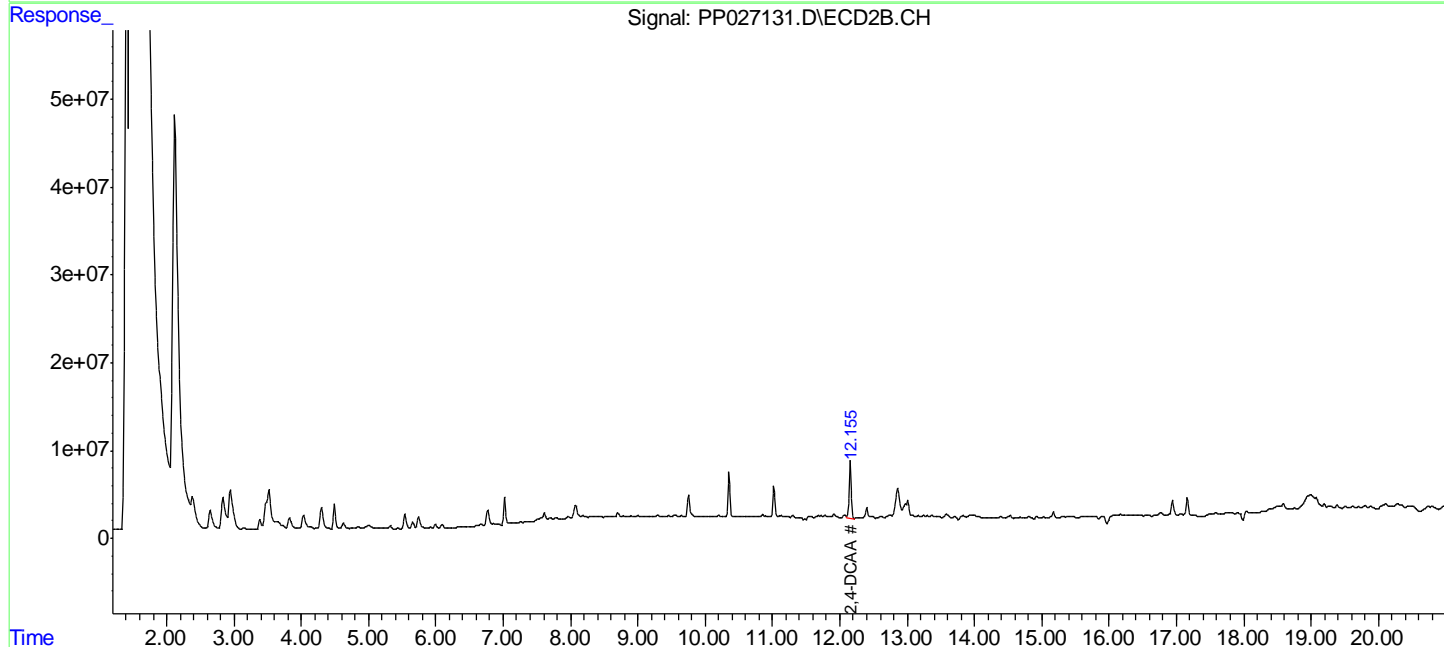
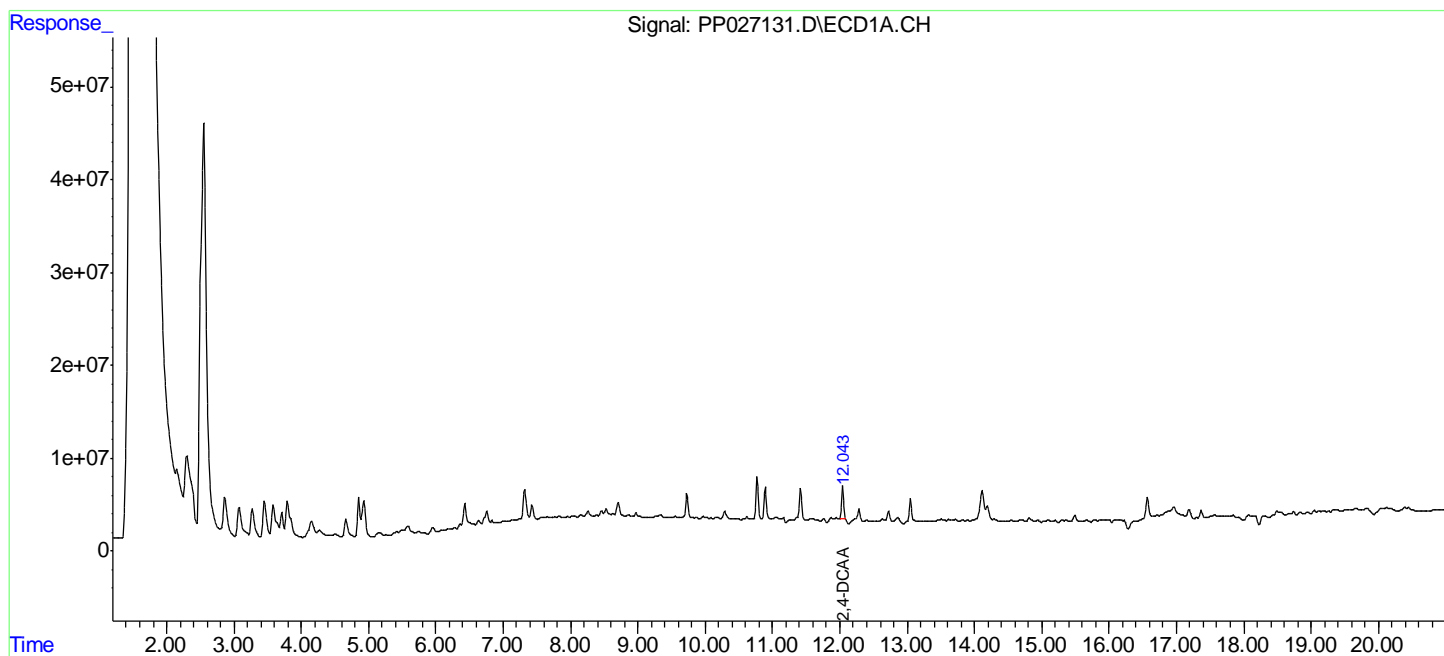
Data Path : Z:\pestpcbsrv\HPCHEM1\ECD P\Data\PP082118\
 Data File : PP027131.D
 Signal(s) : Signal #1: ECD1A.CH Signal #2: ECD2B.CH
 Acq On : 21 Aug 2018 19:57
 Operator : EI\MA
 Sample : J4542-03
 Misc :
 ALS Vial : 14 Sample Multiplier: 1

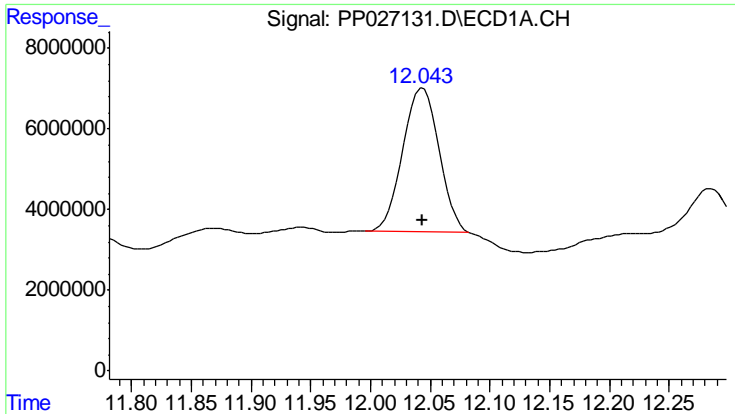
Instrument :
 ECD_P
 ClientSampled :
 FK-GF-02-024-B

Manual Integrations
APPROVED
 Sohil
 8/22/2018 1:07:28 PM

Integration File signal 1: autoint1.e
 Integration File signal 2: autoint2.e
 Quant Time: Aug 22 03:17:51 2018
 Quant Method : Z:\pestpcbsrv\HPCHEM1\ECD_P\methods\PP073018.M
 Quant Title : 8080.M
 QLast Update : Tue Jul 31 01:31:14 2018
 Response via : Initial Calibration
 Integrator: ChemStation 6890 Scale Mode: Large solvent peaks clipped

Volume Inj. : 2 ul
 Signal #1 Phase : ZB-CLPesticides-1 Signal #2 Phase: ZB-CLPesticides-2
 Signal #1 Info : 30M x 0.32mm x0.5 Signal #2 Info : 30M x 0.32mm x 0.25um

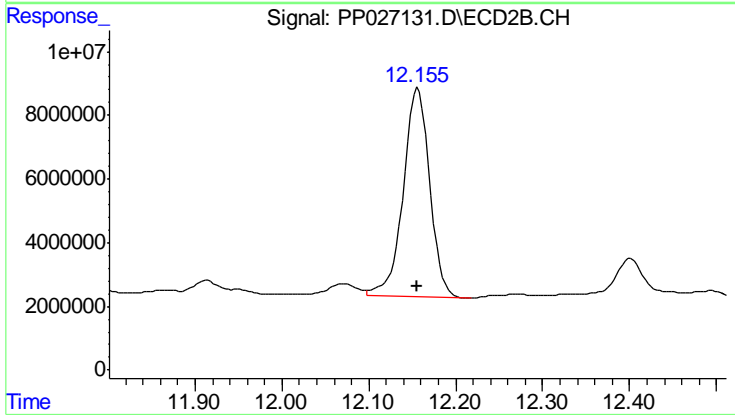




#4 2,4-DCAA
 R.T.: 12.043 min
 Delta R.T.: 0.000 min
 Response: 75795469
 Conc: 317.37 ng/ml

Instrument :
 ECD_P
ClientSampled :
 FK-GF-02-024-B

Manual Integrations
APPROVED
 Sohil
 8/22/2018 1:07:28 PM



#4 2,4-DCAA
 R.T.: 12.157 min
 Delta R.T.: 0.000 min
 Response: 139914768
 Conc: 345.53 ng/ml