

Data Path : Z:\pestpcbsrv\HPCHEM1\ECD_P\Data\PP082124\
 Data File : PP066764.D
 Signal(s) : Signal #1: ECD1A.ch Signal #2: ECD2B.ch
 Acq On : 21 Aug 2024 16:29
 Operator : YP\AJ
 Sample : PB162881BL
 Misc :
 ALS Vial : 25 Sample Multiplier: 1

Instrument :
 ECD_P
 ClientSampleId :
 PB162881BL

Integration File signal 1: autoint1.e
 Integration File signal 2: autoint2.e
 Quant Time: Aug 22 04:19:16 2024
 Quant Method : Z:\pestpcbsrv\HPCHEM1\ECD_P\methods\PP082024.M
 Quant Title : GC EXTRACTABLES
 QLast Update : Wed Aug 21 05:19:45 2024
 Response via : Initial Calibration
 Integrator: ChemStation

Volume Inj. : 2 µl
 Signal #1 Phase : ZB-MR1 Signal #2 Phase: ZB-MR2
 Signal #1 Info : 30Mx0.32mmx 0.50µ Signal #2 Info : 30M x 0.32mm x 0.25µm

Compound	RT#1	RT#2	Resp#1	Resp#2	ng/ml	ng/ml

System Monitoring Compounds						
1) SA Tetrachlo...	4.702	3.982	29968321	22198635	20.238	16.978
2) SA Decachlor...	10.623	9.146	19228190	15373686	21.911	18.455

Target Compounds

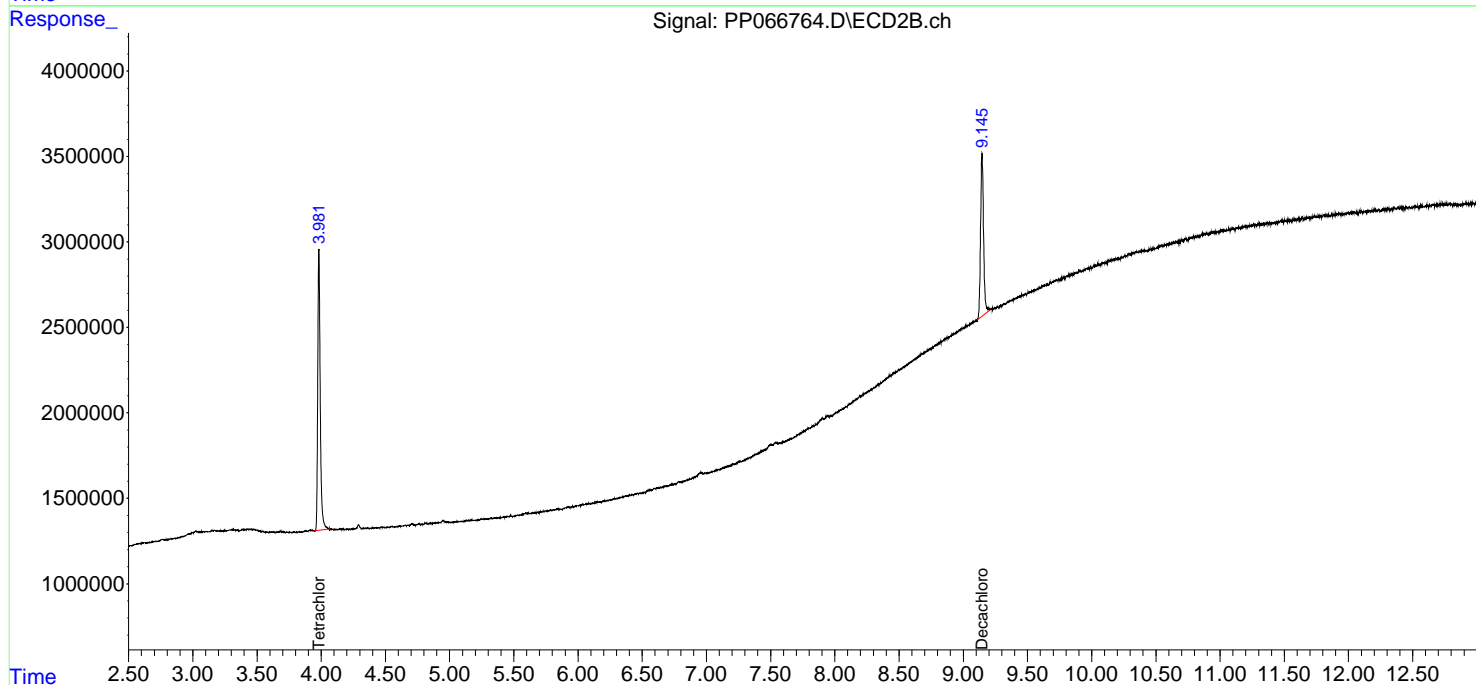
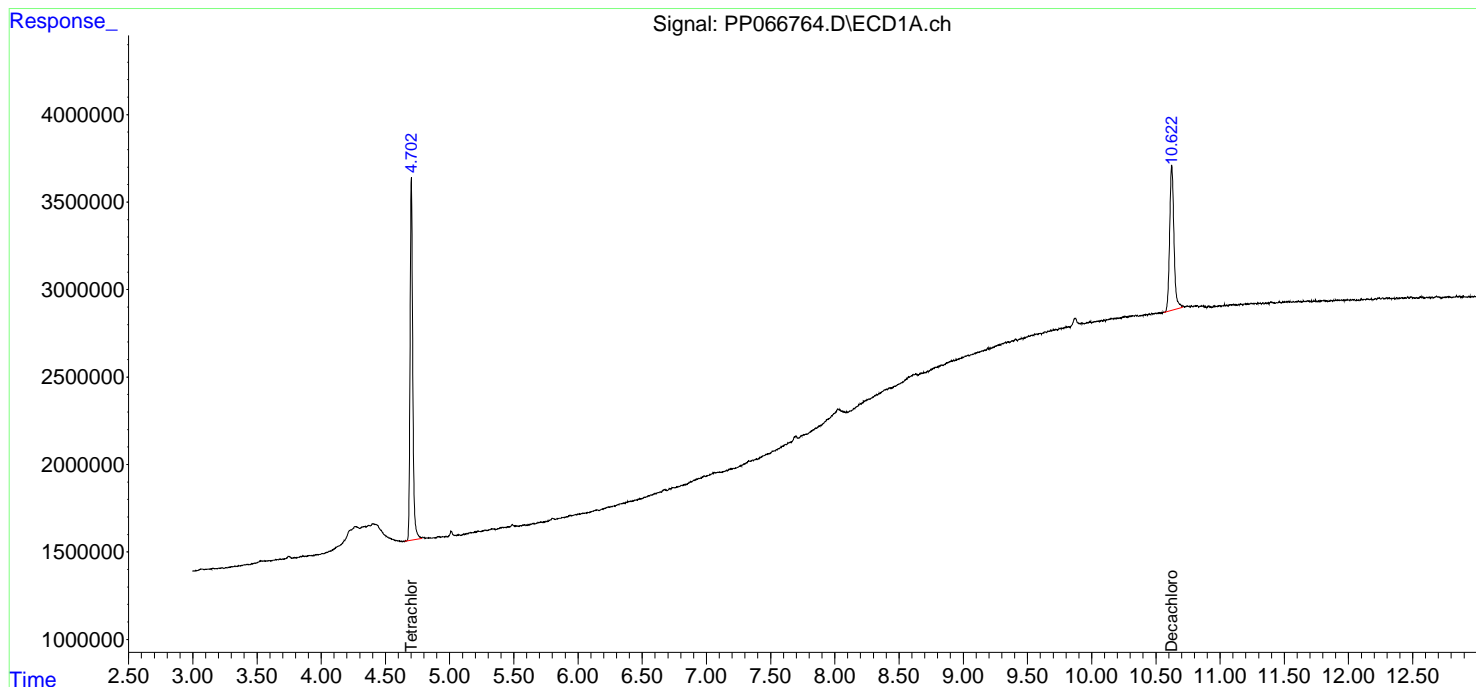
(f)=RT Delta > 1/2 Window (#)=Amounts differ by > 25% (m)=manual int.

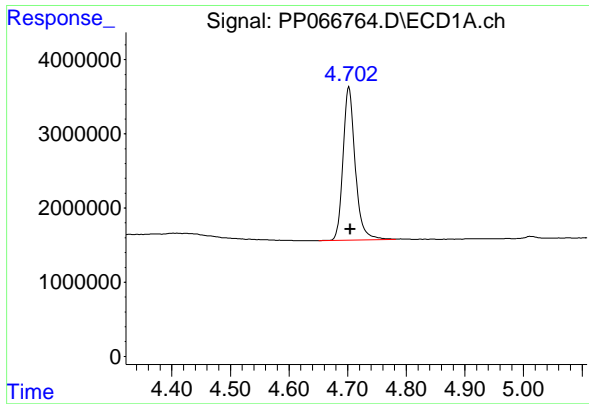
Data Path : Z:\pestpcbsrv\HPCHEM1\ECD_P\Data\PP082124\
 Data File : PP066764.D
 Signal(s) : Signal #1: ECD1A.ch Signal #2: ECD2B.ch
 Acq On : 21 Aug 2024 16:29
 Operator : YP\AJ
 Sample : PB162881BL
 Misc :
 ALS Vial : 25 Sample Multiplier: 1

Instrument :
 ECD_P
 ClientSampleId :
 PB162881BL

Integration File signal 1: autoint1.e
 Integration File signal 2: autoint2.e
 Quant Time: Aug 22 04:19:16 2024
 Quant Method : Z:\pestpcbsrv\HPCHEM1\ECD_P\methods\PP082024.M
 Quant Title : GC EXTRACTABLES
 QLast Update : Wed Aug 21 05:19:45 2024
 Response via : Initial Calibration
 Integrator: ChemStation

Volume Inj. : 2 µl
 Signal #1 Phase : ZB-MR1 Signal #2 Phase: ZB-MR2
 Signal #1 Info : 30Mx0.32mmx 0.50µ Signal #2 Info : 30M x 0.32mm x 0.25µm

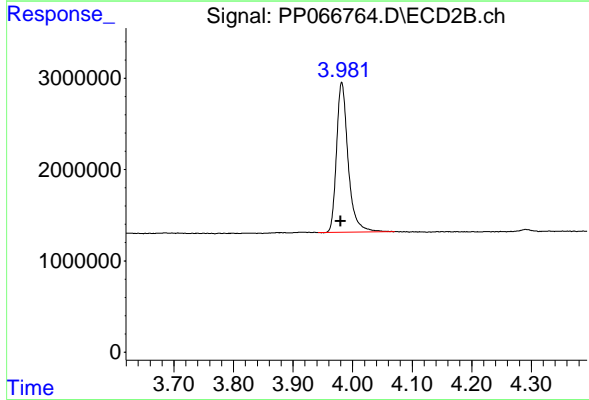




#1 Tetrachloro-m-xylene

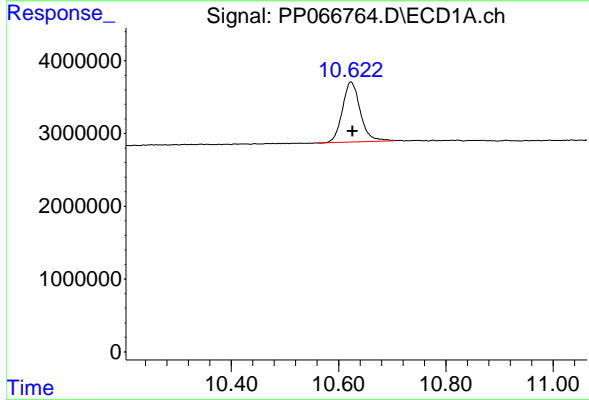
R.T.: 4.702 min
Delta R.T.: -0.003 min
Response: 29968321
Conc: 20.24 ng/ml

Instrument :
ECD_P
ClientSampleId :
PB162881BL



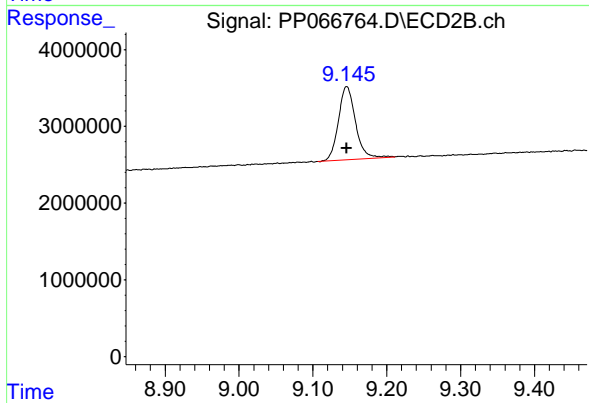
#1 Tetrachloro-m-xylene

R.T.: 3.982 min
Delta R.T.: 0.002 min
Response: 22198635
Conc: 16.98 ng/ml



#2 Decachlorobiphenyl

R.T.: 10.623 min
Delta R.T.: -0.003 min
Response: 19228190
Conc: 21.91 ng/ml



#2 Decachlorobiphenyl

R.T.: 9.146 min
Delta R.T.: 0.000 min
Response: 15373686
Conc: 18.45 ng/ml