

Data Path : Z:\pestpcbsrv\HPCHEM1\ECD\_P\Data\PP082125\  
 Data File : PP074560.D  
 Signal(s) : Signal #1: ECD1A.ch Signal #2: ECD2B.ch  
 Acq On : 21 Aug 2025 21:37  
 Operator : YP\AJ  
 Sample : I.BLK  
 Misc :  
 ALS Vial : 2 Sample Multiplier: 1

Instrument :  
 ECD\_P  
 ClientSampleId :  
 I.BLK

Integration File signal 1: autoint1.e  
 Integration File signal 2: autoint2.e  
 Quant Time: Aug 22 00:27:32 2025  
 Quant Method : Z:\pestpcbsrv\HPCHEM1\ECD\_P\methods\PP081925.M  
 Quant Title : GC EXTRACTABLES  
 QLast Update : Wed Aug 20 06:20:44 2025  
 Response via : Initial Calibration  
 Integrator: ChemStation

Volume Inj. : 2 µl  
 Signal #1 Phase : ZB-MR1 Signal #2 Phase: ZB-MR2  
 Signal #1 Info : 30Mx0.32mmx 0.50µ Signal #2 Info : 30M x 0.32mm x 0.25µm

| Compound                    | RT#1   | RT#2  | Resp#1   | Resp#2   | ng/ml  | ng/ml    |
|-----------------------------|--------|-------|----------|----------|--------|----------|
| System Monitoring Compounds |        |       |          |          |        |          |
| 1) SA Tetrachlo...          | 4.657  | 3.799 | 24030637 | 82919692 | 19.638 | 17.148   |
| 2) SA Decachlor...          | 10.436 | 8.813 | 21637367 | 130.9E6  | 21.911 | 17.449   |
| Target Compounds            |        |       |          |          |        |          |
| 3) L1 AR-1016-1             | 5.798  | 4.896 | 194831   | 162393   | 4.419  | 0.319 #  |
| 4) L1 AR-1016-2             | 5.798  | 4.959 | 194831   | 166140   | 3.100  | 0.698 #  |
| 5) L1 AR-1016-3             | 5.907  | 5.078 | 671975   | 250621   | 14.961 | 1.817 #  |
| 6) L1 AR-1016-4             | 5.940f | 5.120 | 932537   | 74915    | 26.506 | 0.536 #  |
| 7) L1 AR-1016-5             | 0.000  | 5.333 | 0        | 669115   | N.D.   | 4.029 #  |
| 8) L2 AR-1221-1             | 0.000  | 4.013 | 0        | 713345   | N.D.   | 11.530 # |
| 9) L2 AR-1221-2             | 4.959  | 4.099 | 506325   | 787673   | 37.907 | 17.422 # |
| 10) L2 AR-1221-3            | 4.959f | 4.171 | 506325   | 187059   | 13.355 | 1.139 #  |
| 11) L3 AR-1232-1            | 4.959f | 4.171 | 506325   | 187059   | 16.670 | 1.460 #  |
| 12) L3 AR-1232-2            | 0.000  | 4.896 | 0        | 162393   | N.D.   | 0.701 #  |
| 13) L3 AR-1232-3            | 5.798  | 5.078 | 194831   | 250621   | 6.379  | 4.173 #  |
| 14) L3 AR-1232-4            | 5.940f | 5.161 | 932537   | 904266   | 54.000 | 12.268 # |
| 15) L3 AR-1232-5            | 0.000  | 5.333 | 0        | 669115   | N.D.   | 10.778 # |
| 16) L4 AR-1242-1            | 5.798  | 4.896 | 194831   | 162393   | 5.090  | 0.385 #  |
| 17) L4 AR-1242-2            | 5.798  | 4.959 | 194831   | 166140   | 3.449  | 0.830 #  |
| 18) L4 AR-1242-3            | 5.907  | 5.078 | 671975   | 250621   | 16.550 | 2.119 #  |
| 19) L4 AR-1242-4            | 5.940f | 5.161 | 932537   | 904266   | 29.379 | 5.283 #  |
| 20) L4 AR-1242-5            | 6.751  | 5.676 | 1212295  | 894702   | 33.609 | 4.832 #  |
| 21) L5 AR-1248-1            | 5.798  | 4.896 | 194831   | 162393   | 6.446  | 0.588 #  |
| 22) L5 AR-1248-2            | 0.000  | 5.120 | 0        | 74915    | N.D.   | 0.424 #  |
| 23) L5 AR-1248-3            | 0.000  | 5.161 | 0        | 904266   | N.D.   | 3.980 #  |
| 24) L5 AR-1248-4            | 6.654  | 5.333 | 1004065  | 669115   | 18.255 | 3.069 #  |
| 25) L5 AR-1248-5            | 6.751  | 5.701 | 1212295  | 2487832  | 21.855 | 6.773 #  |
| 26) L6 AR-1254-1            | 6.654  | 5.676 | 1004065  | 894702   | 17.231 | 1.877 #  |
| 27) L6 AR-1254-2            | 6.871  | 5.838 | 263119   | 1578849  | 3.224  | 4.484 #  |
| 28) L6 AR-1254-3            | 7.228  | 6.241 | 1966395  | 1501059  | 22.043 | 2.422 #  |
| 29) L6 AR-1254-4            | 7.517  | 6.437 | 143240   | 1425037  | 2.173  | 3.041 #  |
| 30) L6 AR-1254-5            | 7.934  | 6.878 | 962494   | 537690   | 11.584 | 1.096 #  |
| 31) L7 AR-1260-1            | 7.339f | 6.368 | 31203    | 1296171  | 0.540  | 3.454 #  |
| 32) L7 AR-1260-2            | 7.657  | 6.568 | 754556   | 602535   | 10.949 | 1.139 #  |
| 33) L7 AR-1260-3            | 8.006  | 6.697 | 456041   | 275755   | 8.789  | 0.637 #  |
| 34) L7 AR-1260-4            | 8.219  | 7.167 | 518231   | 271241   | 8.124  | 0.711 #  |
| 35) L7 AR-1260-5            | 8.549  | 7.406 | 220731   | 383460   | 1.946  | 0.382 #  |
| 36) L8 AR-1262-1            | 8.219  | 6.921 | 518231   | 194782   | 6.729  | 0.275 #  |
| 37) L8 AR-1262-2            | 8.575  | 7.167 | 92200    | 271241   | 0.696  | 0.521 #  |
| 38) L8 AR-1262-3            | 8.890  | 7.705 | 55298    | 7002383  | 0.569  | 15.017 # |
| 39) L8 AR-1262-4            | 0.000  | 7.748 | 0        | 2780826  | N.D.   | 3.384 #  |
| 40) L8 AR-1262-5            | 9.667  | 8.246 | 41945    | 199667   | 0.688  | 0.557    |
| 41) L9 AR-1268-1            | 8.890  | 7.705 | 55298    | 7002383  | 0.341  | 4.964 #  |

Data Path : Z:\pestpcbsrv\HPCHEM1\ECD\_P\Data\PP082125\  
 Data File : PP074560.D  
 Signal(s) : Signal #1: ECD1A.ch Signal #2: ECD2B.ch  
 Acq On : 21 Aug 2025 21:37  
 Operator : YP\AJ  
 Sample : I.BLK  
 Misc :  
 ALS Vial : 2 Sample Multiplier: 1

Instrument :  
 ECD\_P  
 ClientSampleId :  
 I.BLK

Integration File signal 1: autoint1.e  
 Integration File signal 2: autoint2.e  
 Quant Time: Aug 22 00:27:32 2025  
 Quant Method : Z:\pestpcbsrv\HPCHEM1\ECD\_P\methods\PP081925.M  
 Quant Title : GC EXTRACTABLES  
 QLast Update : Wed Aug 20 06:20:44 2025  
 Response via : Initial Calibration  
 Integrator: ChemStation

Volume Inj. : 2 µl  
 Signal #1 Phase : ZB-MR1 Signal #2 Phase: ZB-MR2  
 Signal #1 Info : 30Mx0.32mmx 0.50µ Signal #2 Info : 30M x 0.32mm x 0.25µm

|     | Compound     | RT#1   | RT#2  | Resp#1 | Resp#2  | ng/ml | ng/ml   |
|-----|--------------|--------|-------|--------|---------|-------|---------|
| 42) | L9 AR-1268-2 | 0.000  | 7.748 | 0      | 2780826 | N.D.  | 2.040 # |
| 43) | L9 AR-1268-3 | 9.228  | 7.961 | 39602  | 1379851 | 0.320 | 1.323 # |
| 44) | L9 AR-1268-4 | 9.667  | 8.246 | 41945  | 199667  | 0.624 | 0.521   |
| 45) | L9 AR-1268-5 | 10.085 | 8.558 | 95669  | 458076  | 0.258 | 0.146 # |

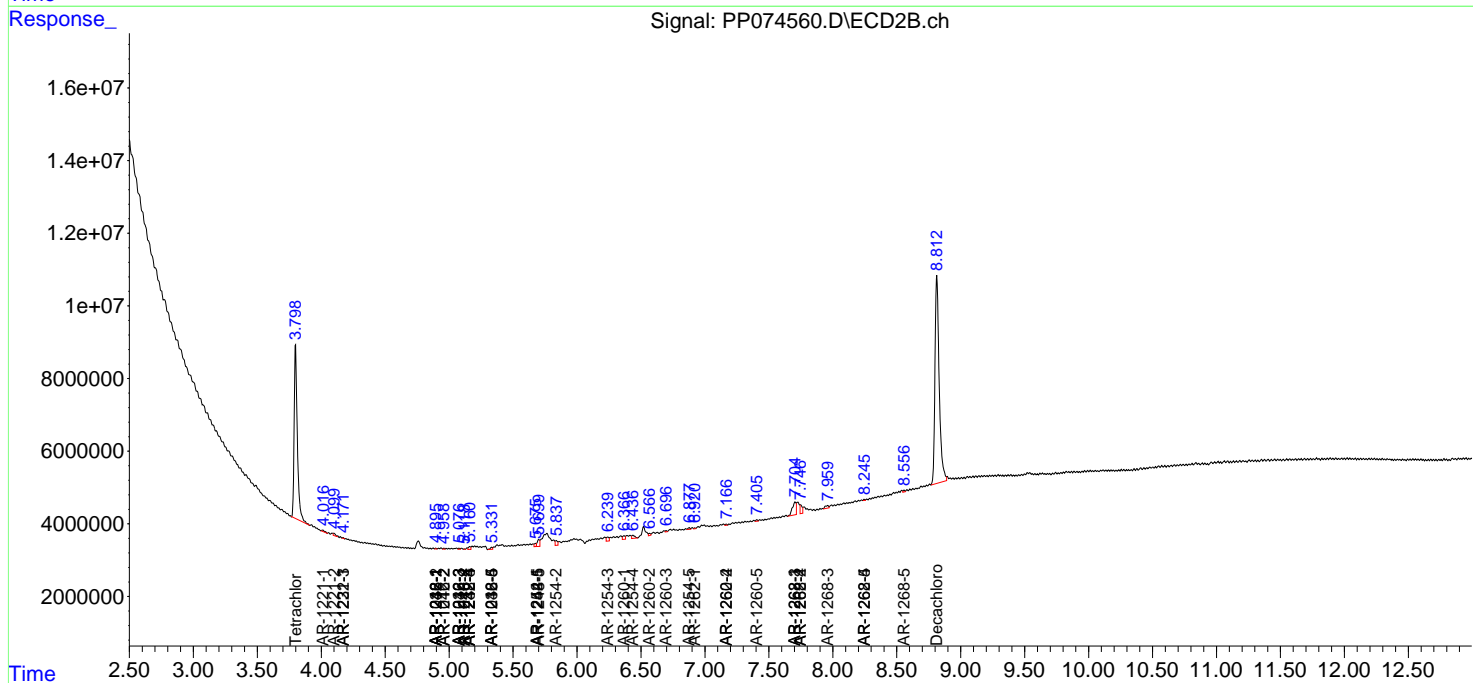
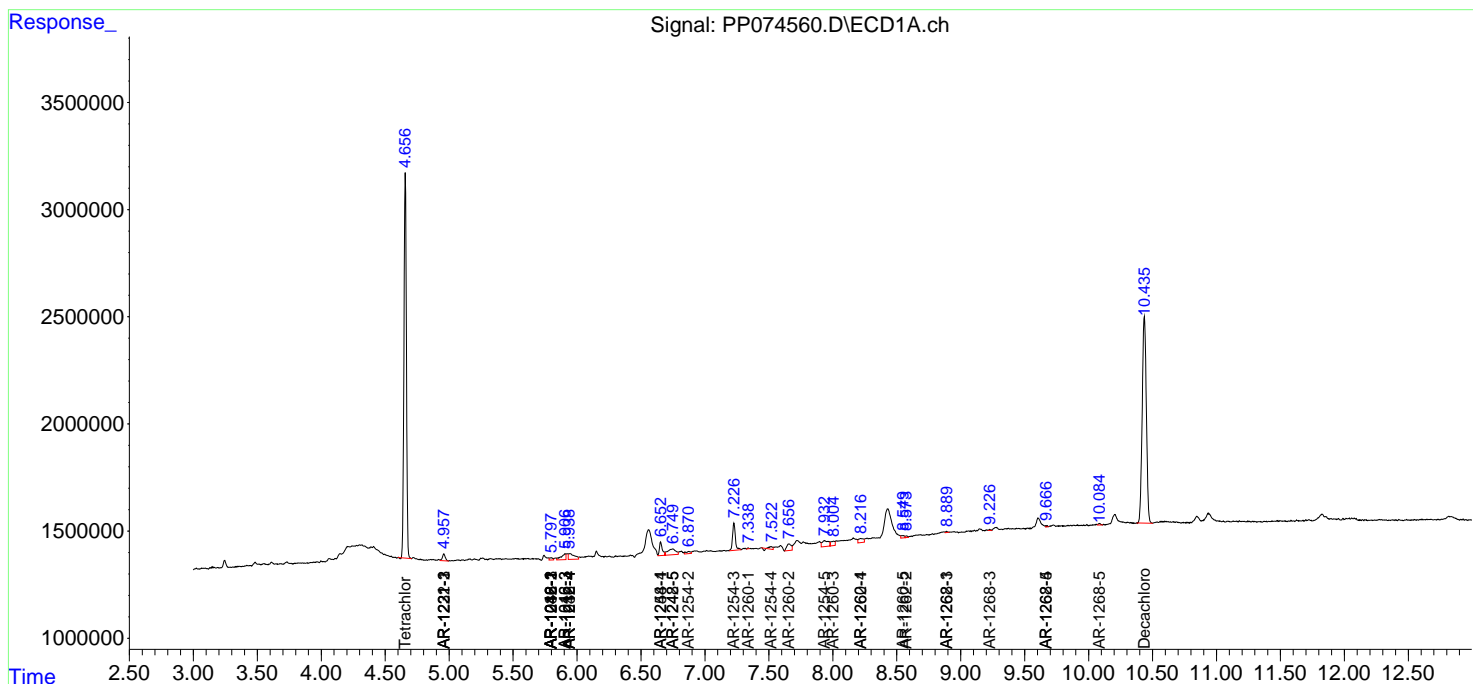
(f)=RT Delta > 1/2 Window (#)=Amounts differ by > 25% (m)=manual int.

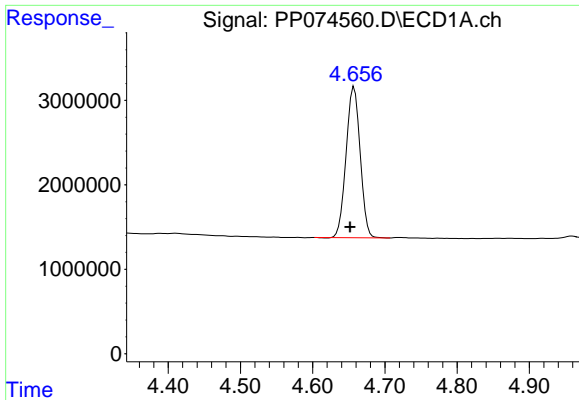
Data Path : Z:\pestpcbsrv\HPCHEM1\ECD\_P\Data\PP082125\  
 Data File : PP074560.D  
 Signal(s) : Signal #1: ECD1A.ch Signal #2: ECD2B.ch  
 Acq On : 21 Aug 2025 21:37  
 Operator : YP\AJ  
 Sample : I.BLK  
 Misc :  
 ALS Vial : 2 Sample Multiplier: 1

Instrument :  
 ECD\_P  
 ClientSampleId :  
 I.BLK

Integration File signal 1: autoint1.e  
 Integration File signal 2: autoint2.e  
 Quant Time: Aug 22 00:27:32 2025  
 Quant Method : Z:\pestpcbsrv\HPCHEM1\ECD\_P\methods\PP081925.M  
 Quant Title : GC EXTRACTABLES  
 QLast Update : Wed Aug 20 06:20:44 2025  
 Response via : Initial Calibration  
 Integrator: ChemStation

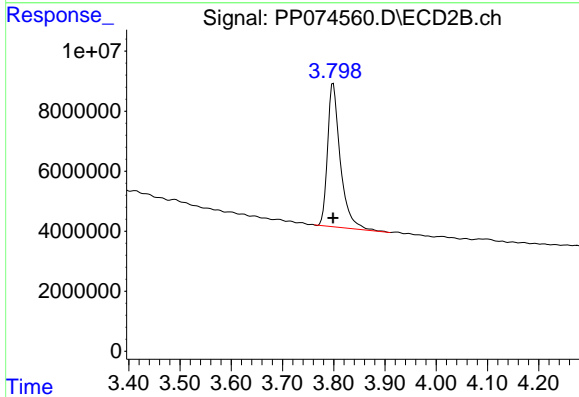
Volume Inj. : 2 µl  
 Signal #1 Phase : ZB-MR1 Signal #2 Phase: ZB-MR2  
 Signal #1 Info : 30Mx0.32mmx 0.50µ Signal #2 Info : 30M x 0.32mm x 0.25µm



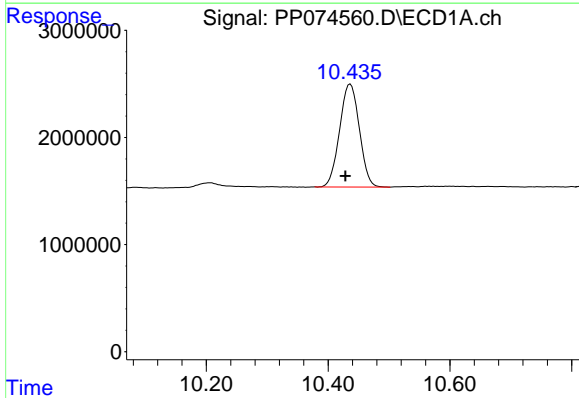


#1 Tetrachloro-m-xylene  
 R.T.: 4.657 min  
 Delta R.T.: 0.005 min  
 Response: 24030637  
 Conc: 19.64 ng/ml

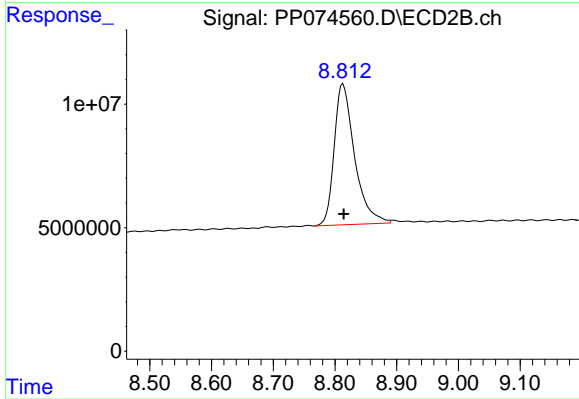
Instrument :  
 ECD\_P  
 ClientSampleId :  
 I.BLK



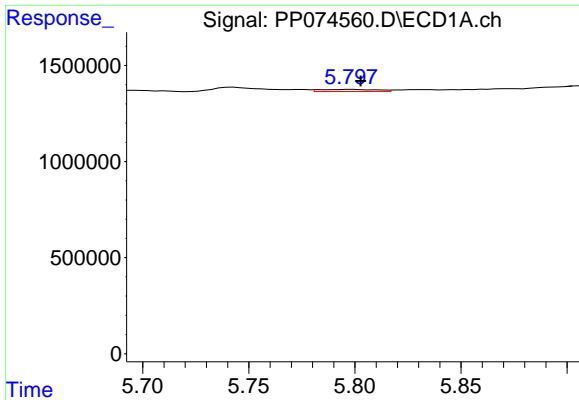
#1 Tetrachloro-m-xylene  
 R.T.: 3.799 min  
 Delta R.T.: 0.000 min  
 Response: 82919692  
 Conc: 17.15 ng/ml



#2 Decachlorobiphenyl  
 R.T.: 10.436 min  
 Delta R.T.: 0.008 min  
 Response: 21637367  
 Conc: 21.91 ng/ml



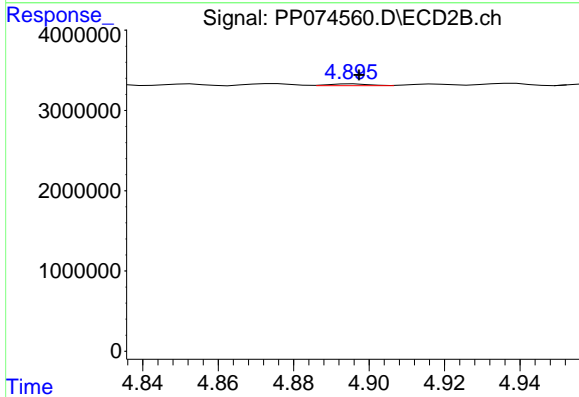
#2 Decachlorobiphenyl  
 R.T.: 8.813 min  
 Delta R.T.: 0.000 min  
 Response: 130855164  
 Conc: 17.45 ng/ml



#3 AR-1016-1

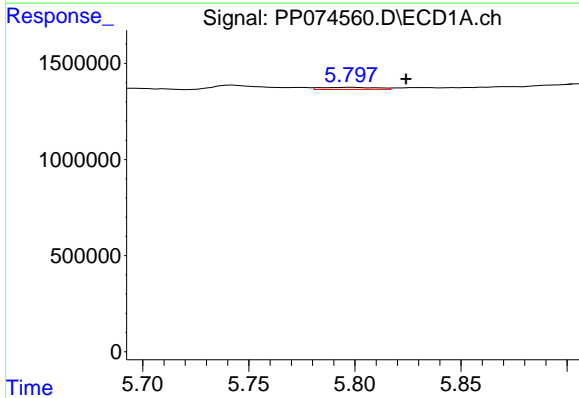
R.T.: 5.798 min  
 Delta R.T.: -0.004 min  
 Response: 194831  
 Conc: 4.42 ng/ml

Instrument : ECD\_P  
 ClientSampleId : I.BLK



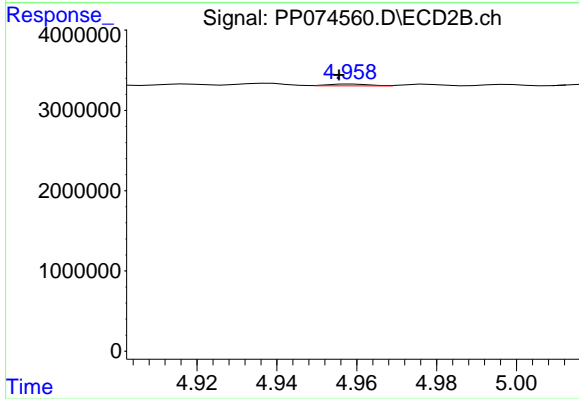
#3 AR-1016-1

R.T.: 4.896 min  
 Delta R.T.: -0.002 min  
 Response: 162393  
 Conc: 0.32 ng/ml



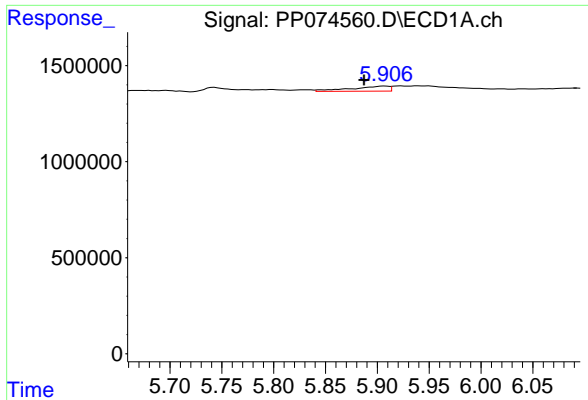
#4 AR-1016-2

R.T.: 5.798 min  
 Delta R.T.: -0.026 min  
 Response: 194831  
 Conc: 3.10 ng/ml



#4 AR-1016-2

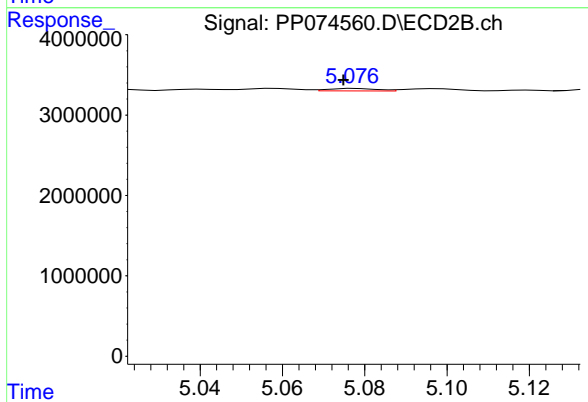
R.T.: 4.959 min  
 Delta R.T.: 0.003 min  
 Response: 166140  
 Conc: 0.70 ng/ml



#5 AR-1016-3

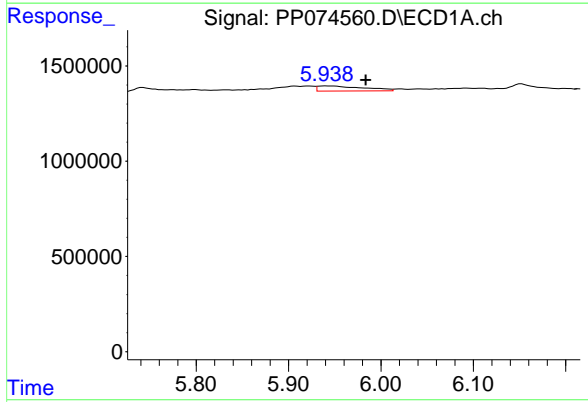
R.T.: 5.907 min  
 Delta R.T.: 0.020 min  
 Response: 671975  
 Conc: 14.96 ng/ml

Instrument :  
 ECD\_P  
 ClientSampleId :  
 I.BLK



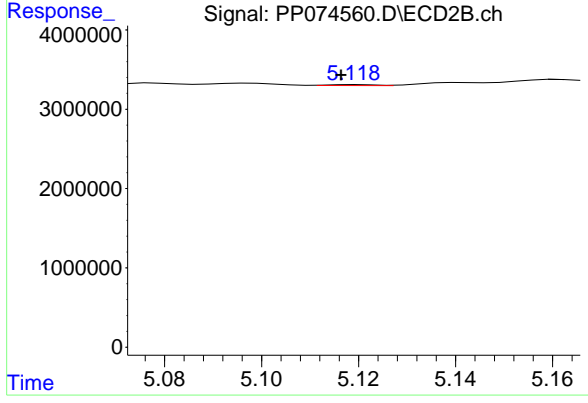
#5 AR-1016-3

R.T.: 5.078 min  
 Delta R.T.: 0.003 min  
 Response: 250621  
 Conc: 1.82 ng/ml



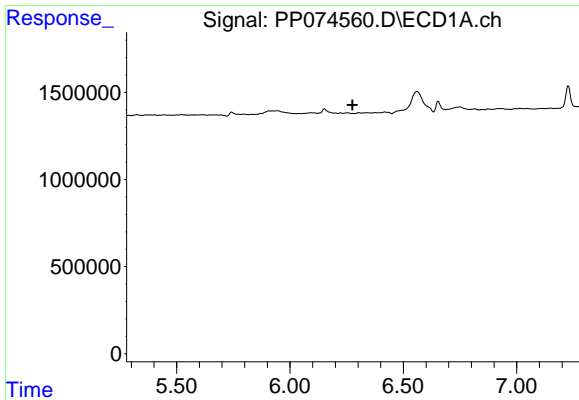
#6 AR-1016-4

R.T.: 5.940 min  
 Delta R.T.: -0.044 min  
 Response: 932537  
 Conc: 26.51 ng/ml



#6 AR-1016-4

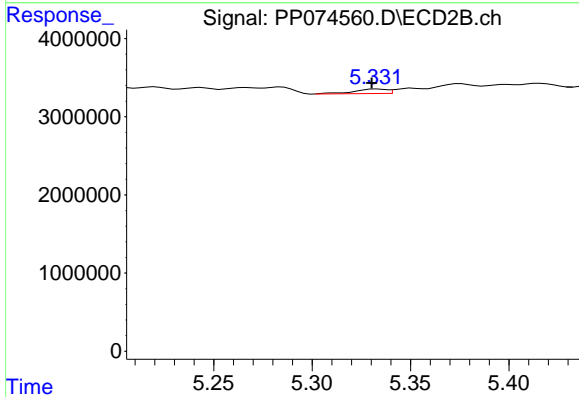
R.T.: 5.120 min  
 Delta R.T.: 0.003 min  
 Response: 74915  
 Conc: 0.54 ng/ml



#7 AR-1016-5

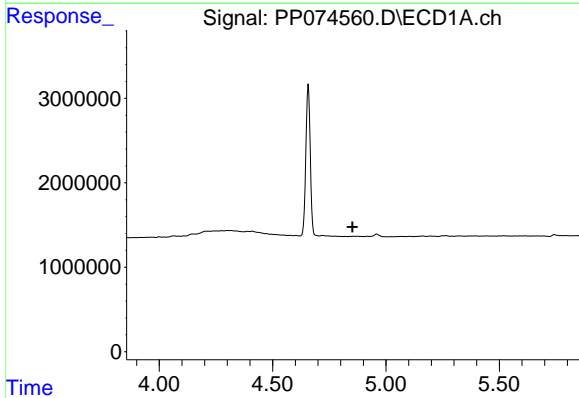
R.T.: 0.000 min  
 Exp R.T.: 6.276 min  
 Response: 0  
 Conc: N.D.

Instrument :  
 ECD\_P  
 ClientSampleId :  
 I.BLK



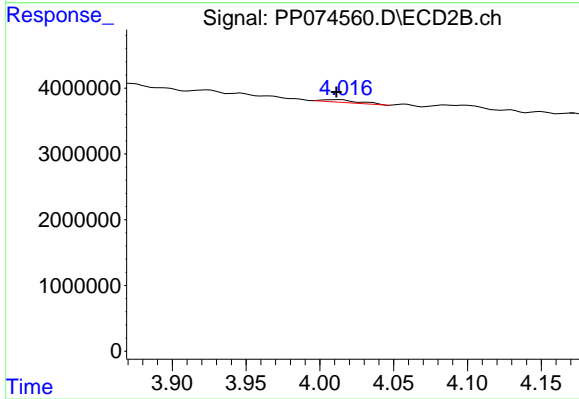
#7 AR-1016-5

R.T.: 5.333 min  
 Delta R.T.: 0.002 min  
 Response: 669115  
 Conc: 4.03 ng/ml



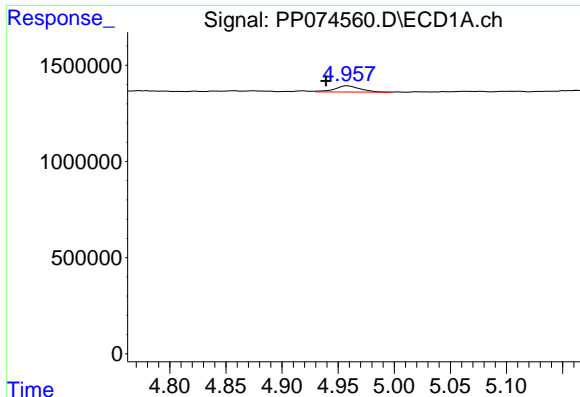
#8 AR-1221-1

R.T.: 0.000 min  
 Exp R.T.: 4.853 min  
 Response: 0  
 Conc: N.D.



#8 AR-1221-1

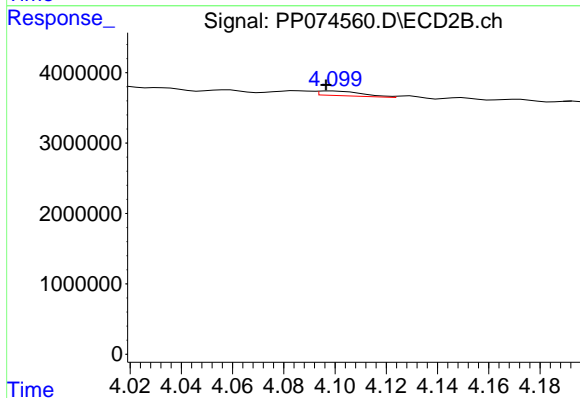
R.T.: 4.013 min  
 Delta R.T.: 0.002 min  
 Response: 713345  
 Conc: 11.53 ng/ml



#9 AR-1221-2

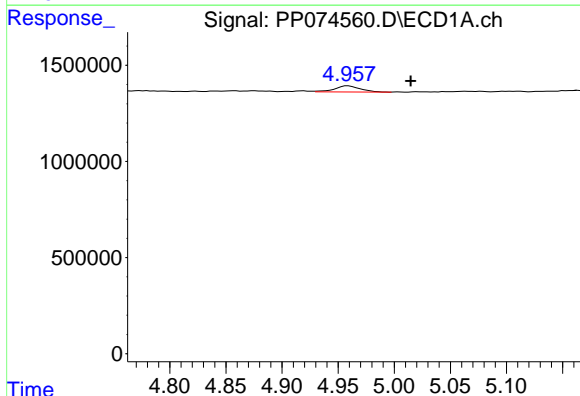
R.T.: 4.959 min  
 Delta R.T.: 0.020 min  
 Response: 506325  
 Conc: 37.91 ng/ml

Instrument :  
 ECD\_P  
 ClientSampleId :  
 I.BLK



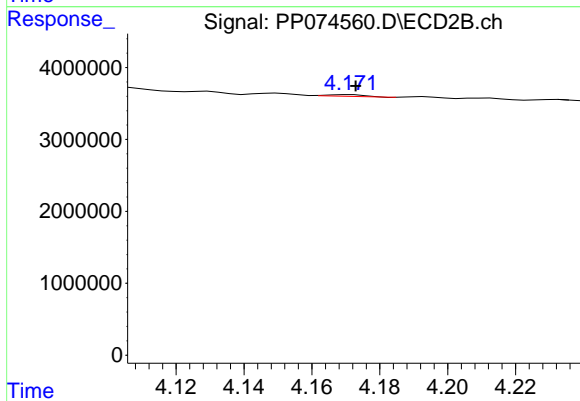
#9 AR-1221-2

R.T.: 4.099 min  
 Delta R.T.: 0.002 min  
 Response: 787673  
 Conc: 17.42 ng/ml



#10 AR-1221-3

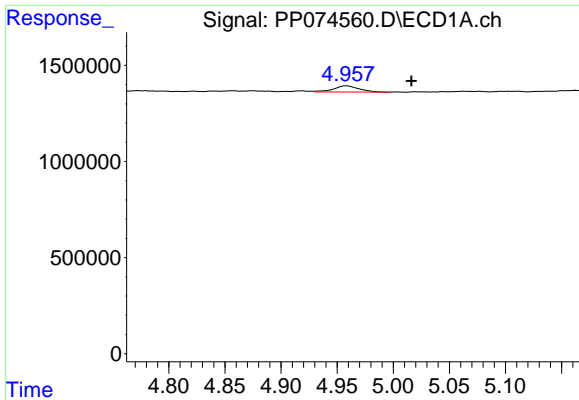
R.T.: 4.959 min  
 Delta R.T.: -0.056 min  
 Response: 506325  
 Conc: 13.36 ng/ml



#10 AR-1221-3

R.T.: 4.171 min  
 Delta R.T.: -0.001 min  
 Response: 187059  
 Conc: 1.14 ng/ml

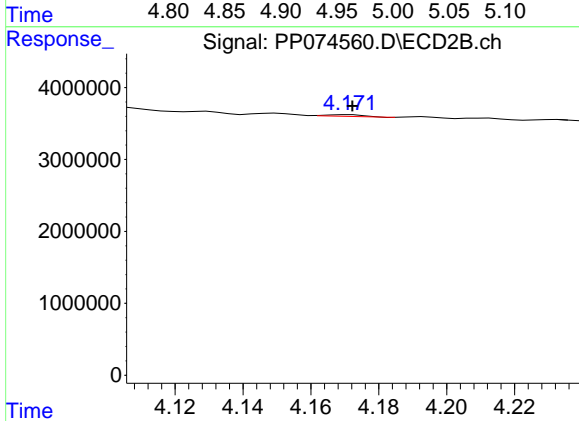




#11 AR-1232-1

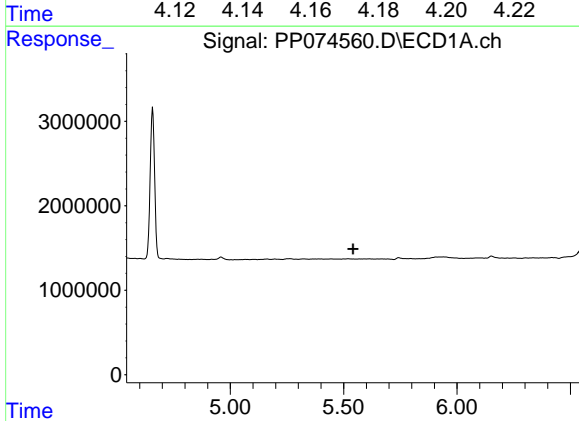
R.T.: 4.959 min  
 Delta R.T.: -0.057 min  
 Response: 506325  
 Conc: 16.67 ng/ml

Instrument :  
 ECD\_P  
 ClientSampleId :  
 I.BLK



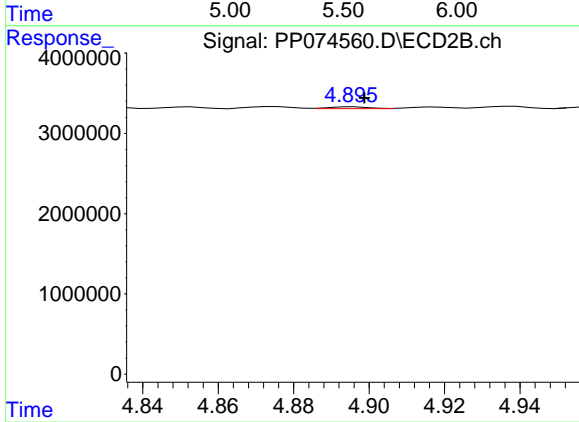
#11 AR-1232-1

R.T.: 4.171 min  
 Delta R.T.: 0.000 min  
 Response: 187059  
 Conc: 1.46 ng/ml



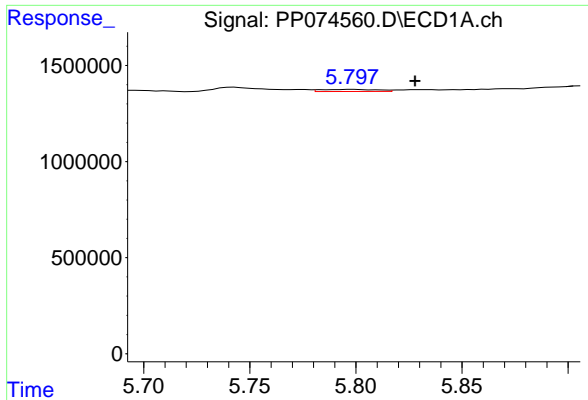
#12 AR-1232-2

R.T.: 0.000 min  
 Exp R.T. : 5.542 min  
 Response: 0  
 Conc: N.D.



#12 AR-1232-2

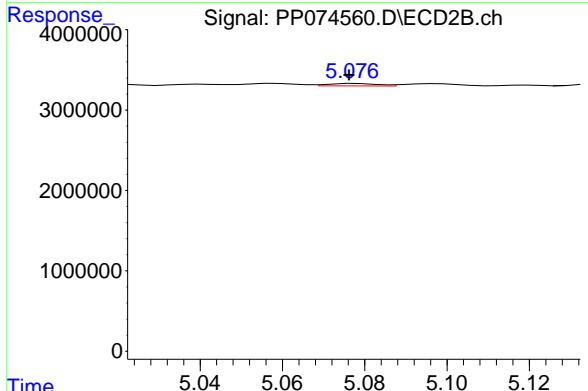
R.T.: 4.896 min  
 Delta R.T.: -0.003 min  
 Response: 162393  
 Conc: 0.70 ng/ml



#13 AR-1232-3

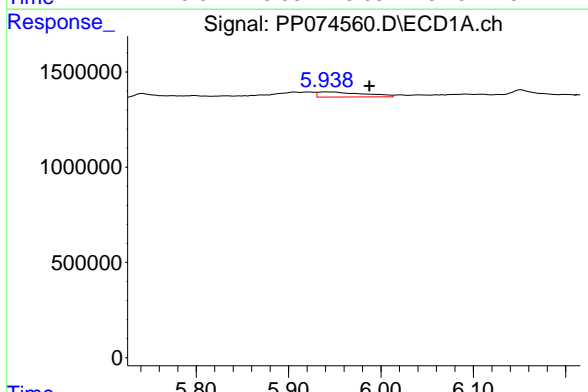
R.T.: 5.798 min  
 Delta R.T.: -0.029 min  
 Response: 194831  
 Conc: 6.38 ng/ml

Instrument :  
 ECD\_P  
 ClientSampleId :  
 I.BLK



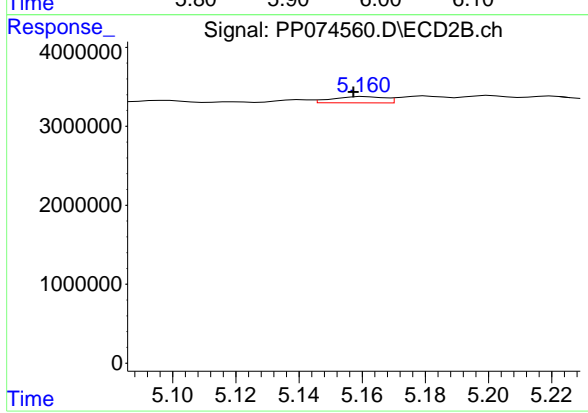
#13 AR-1232-3

R.T.: 5.078 min  
 Delta R.T.: 0.001 min  
 Response: 250621  
 Conc: 4.17 ng/ml



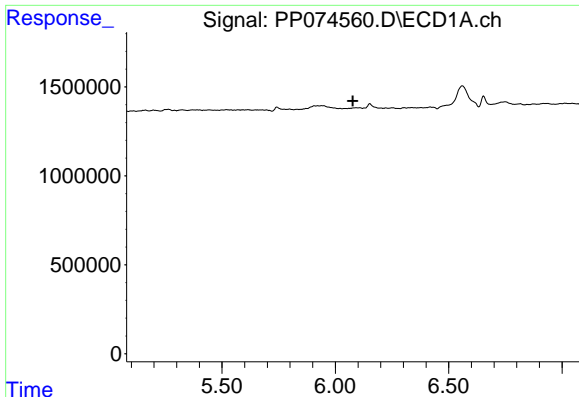
#14 AR-1232-4

R.T.: 5.940 min  
 Delta R.T.: -0.048 min  
 Response: 932537  
 Conc: 54.00 ng/ml



#14 AR-1232-4

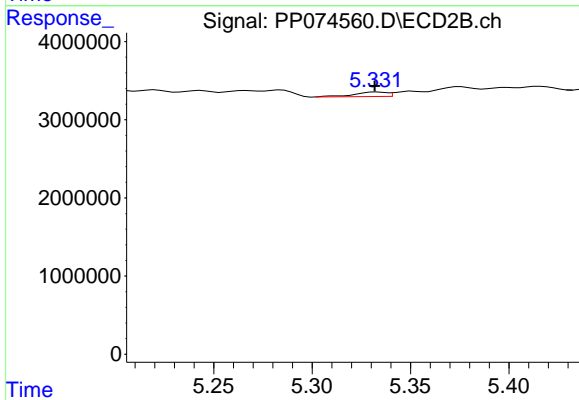
R.T.: 5.161 min  
 Delta R.T.: 0.004 min  
 Response: 904266  
 Conc: 12.27 ng/ml



#15 AR-1232-5

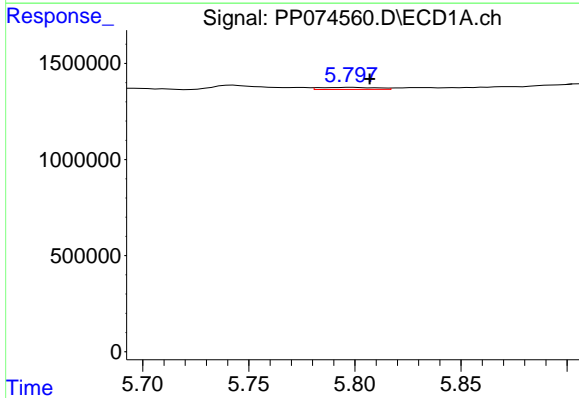
R.T.: 0.000 min  
 Exp R.T.: 6.077 min  
 Response: 0  
 Conc: N.D.

Instrument :  
 ECD\_P  
 ClientSampleId :  
 I.BLK



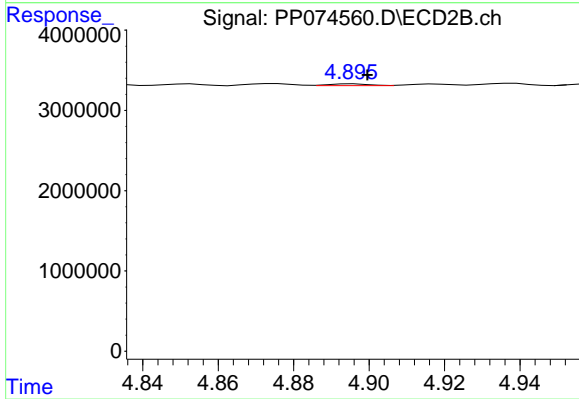
#15 AR-1232-5

R.T.: 5.333 min  
 Delta R.T.: 0.000 min  
 Response: 669115  
 Conc: 10.78 ng/ml



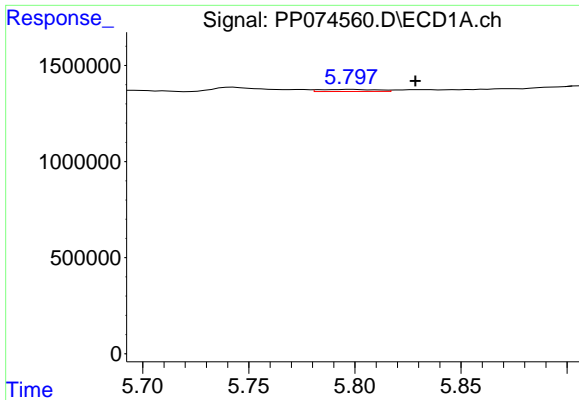
#16 AR-1242-1

R.T.: 5.798 min  
 Delta R.T.: -0.008 min  
 Response: 194831  
 Conc: 5.09 ng/ml



#16 AR-1242-1

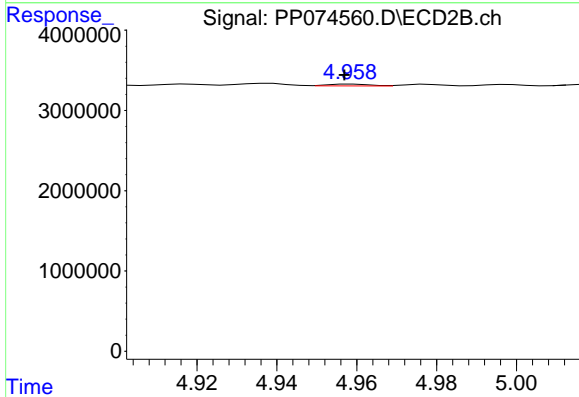
R.T.: 4.896 min  
 Delta R.T.: -0.004 min  
 Response: 162393  
 Conc: 0.39 ng/ml



#17 AR-1242-2

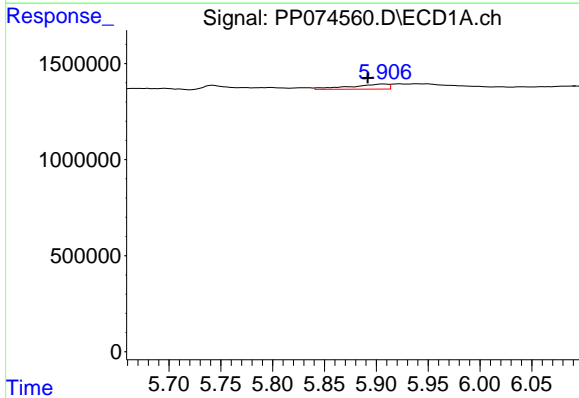
R.T.: 5.798 min  
 Delta R.T.: -0.030 min  
 Response: 194831  
 Conc: 3.45 ng/ml

Instrument :  
 ECD\_P  
 ClientSampleId :  
 I.BLK



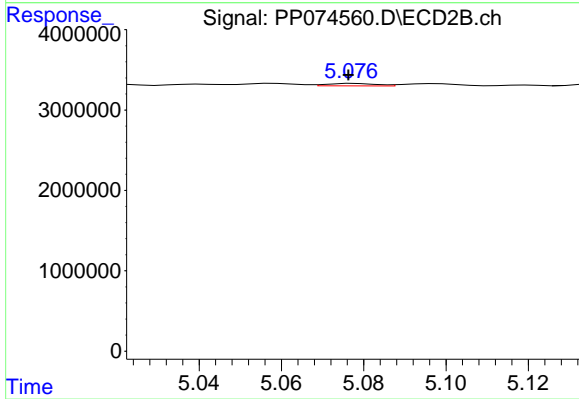
#17 AR-1242-2

R.T.: 4.959 min  
 Delta R.T.: 0.002 min  
 Response: 166140  
 Conc: 0.83 ng/ml



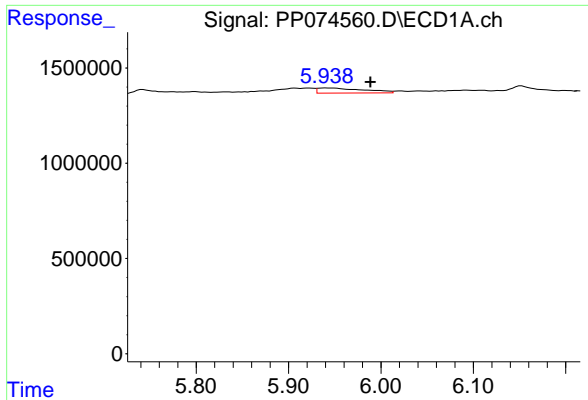
#18 AR-1242-3

R.T.: 5.907 min  
 Delta R.T.: 0.016 min  
 Response: 671975  
 Conc: 16.55 ng/ml



#18 AR-1242-3

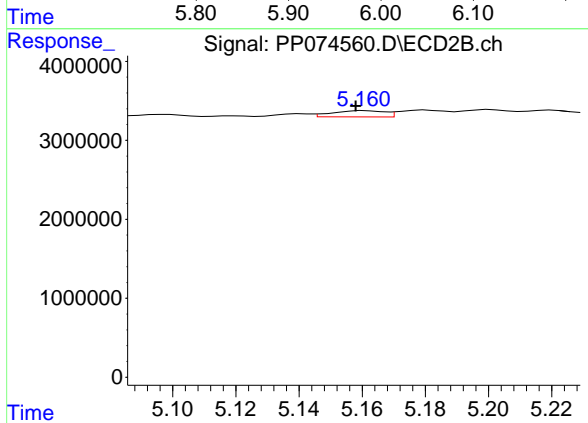
R.T.: 5.078 min  
 Delta R.T.: 0.001 min  
 Response: 250621  
 Conc: 2.12 ng/ml



#19 AR-1242-4

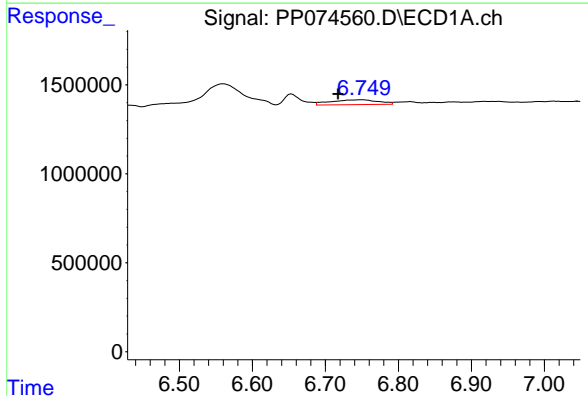
R.T.: 5.940 min  
 Delta R.T.: -0.049 min  
 Response: 932537  
 Conc: 29.38 ng/ml

Instrument :  
 ECD\_P  
 ClientSampleId :  
 I.BLK



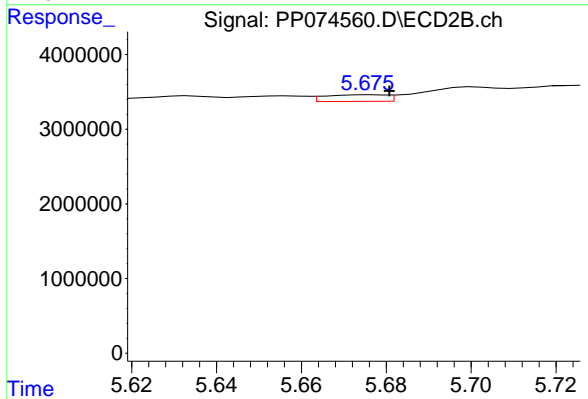
#19 AR-1242-4

R.T.: 5.161 min  
 Delta R.T.: 0.003 min  
 Response: 904266  
 Conc: 5.28 ng/ml



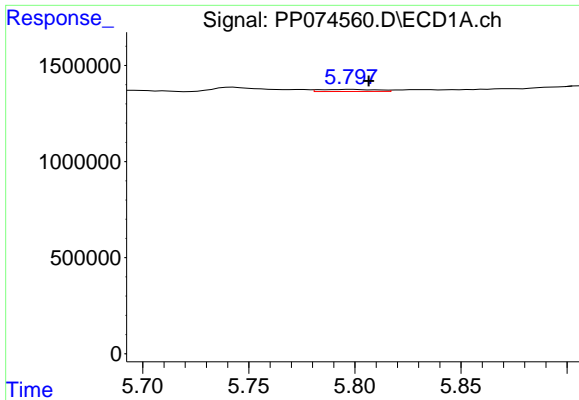
#20 AR-1242-5

R.T.: 6.751 min  
 Delta R.T.: 0.033 min  
 Response: 1212295  
 Conc: 33.61 ng/ml



#20 AR-1242-5

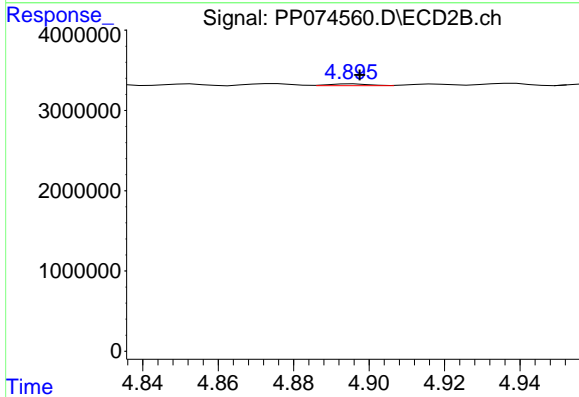
R.T.: 5.676 min  
 Delta R.T.: -0.004 min  
 Response: 894702  
 Conc: 4.83 ng/ml



#21 AR-1248-1

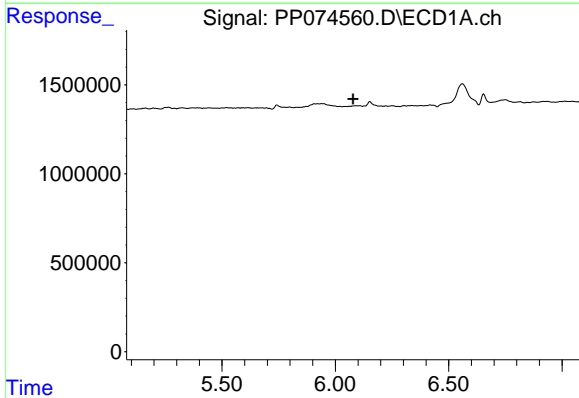
R.T.: 5.798 min  
 Delta R.T.: -0.008 min  
 Response: 194831  
 Conc: 6.45 ng/ml

Instrument :  
 ECD\_P  
 ClientSampleId :  
 I.BLK



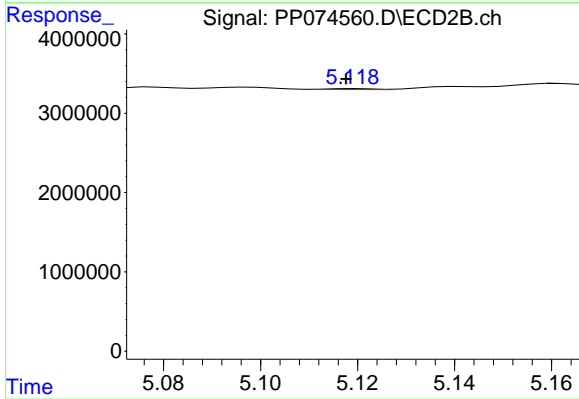
#21 AR-1248-1

R.T.: 4.896 min  
 Delta R.T.: -0.002 min  
 Response: 162393  
 Conc: 0.59 ng/ml



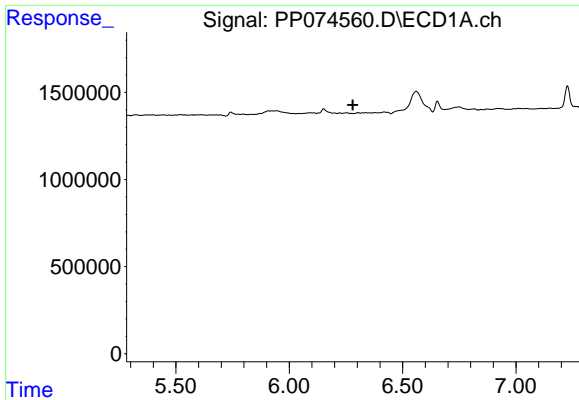
#22 AR-1248-2

R.T.: 0.000 min  
 Exp R.T. : 6.078 min  
 Response: 0  
 Conc: N.D.



#22 AR-1248-2

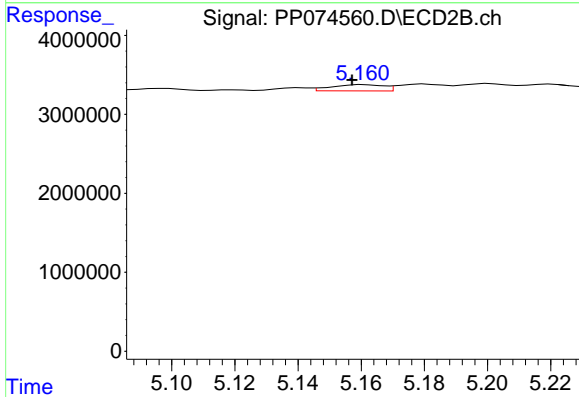
R.T.: 5.120 min  
 Delta R.T.: 0.002 min  
 Response: 74915  
 Conc: 0.42 ng/ml



#23 AR-1248-3

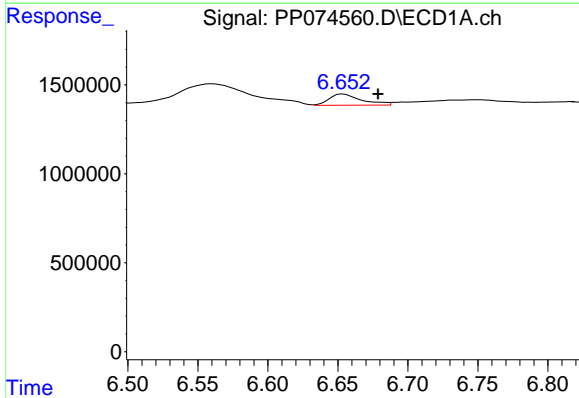
R.T.: 0.000 min  
 Exp R.T.: 6.281 min  
 Response: 0  
 Conc: N.D.

Instrument :  
 ECD\_P  
 ClientSampleId :  
 I.BLK



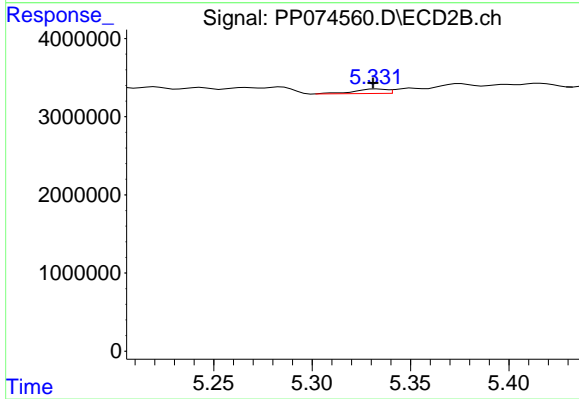
#23 AR-1248-3

R.T.: 5.161 min  
 Delta R.T.: 0.004 min  
 Response: 904266  
 Conc: 3.98 ng/ml



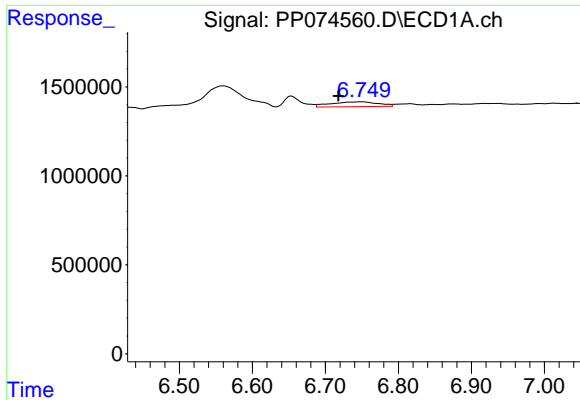
#24 AR-1248-4

R.T.: 6.654 min  
 Delta R.T.: -0.025 min  
 Response: 1004065  
 Conc: 18.26 ng/ml



#24 AR-1248-4

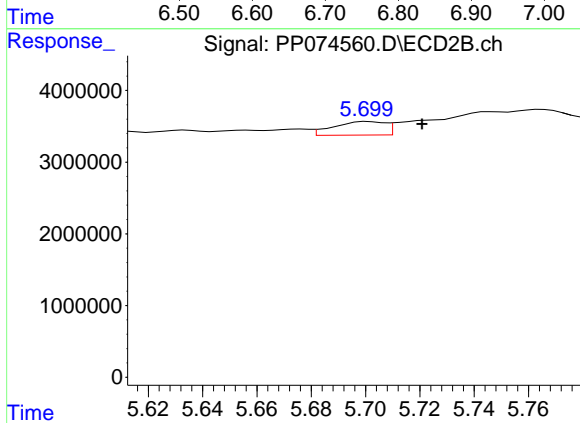
R.T.: 5.333 min  
 Delta R.T.: 0.002 min  
 Response: 669115  
 Conc: 3.07 ng/ml



#25 AR-1248-5

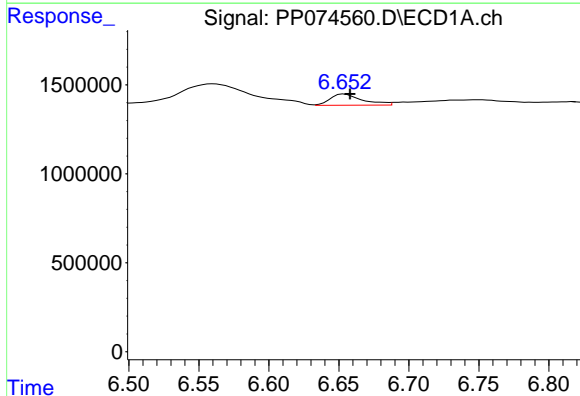
R.T.: 6.751 min  
 Delta R.T.: 0.033 min  
 Response: 1212295  
 Conc: 21.85 ng/ml

Instrument :  
 ECD\_P  
 ClientSampleId :  
 I.BLK



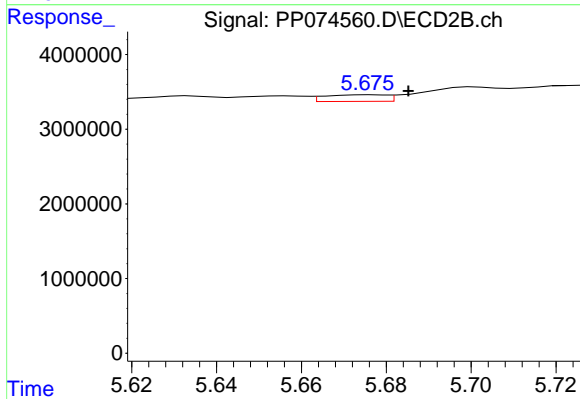
#25 AR-1248-5

R.T.: 5.701 min  
 Delta R.T.: -0.020 min  
 Response: 2487832  
 Conc: 6.77 ng/ml



#26 AR-1254-1

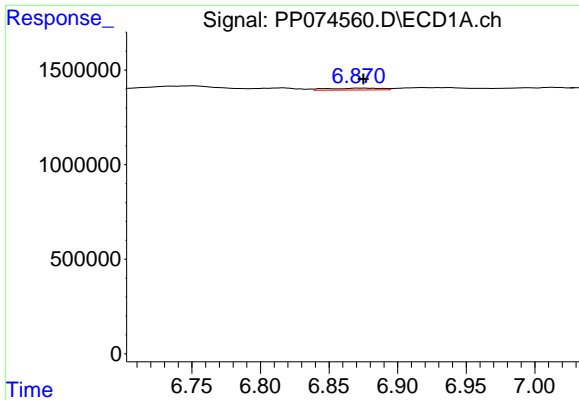
R.T.: 6.654 min  
 Delta R.T.: -0.004 min  
 Response: 1004065  
 Conc: 17.23 ng/ml



#26 AR-1254-1

R.T.: 5.676 min  
 Delta R.T.: -0.009 min  
 Response: 894702  
 Conc: 1.88 ng/ml

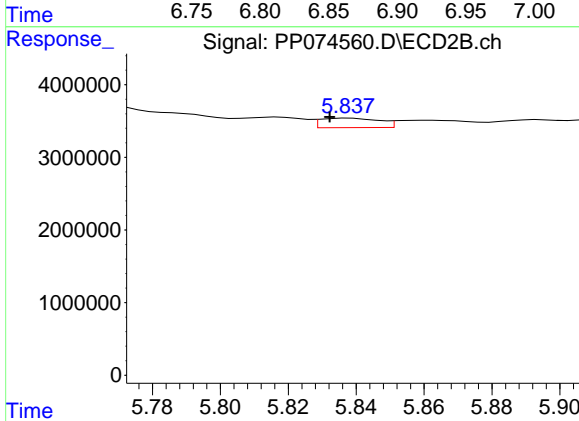




#27 AR-1254-2

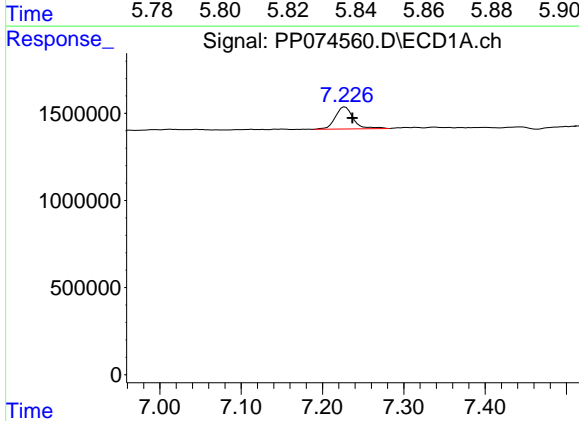
R.T.: 6.871 min  
 Delta R.T.: -0.004 min  
 Response: 263119  
 Conc: 3.22 ng/ml

Instrument :  
 ECD\_P  
 ClientSampleId :  
 I.BLK



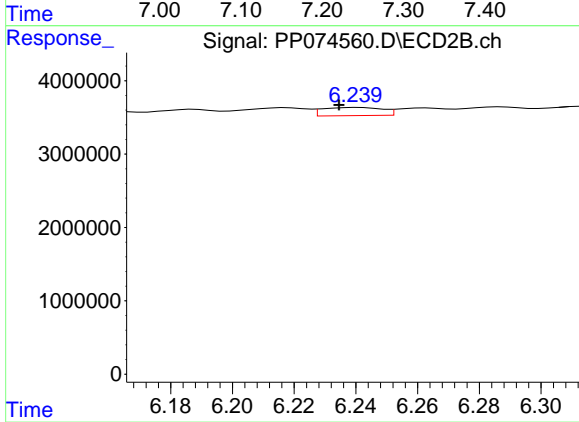
#27 AR-1254-2

R.T.: 5.838 min  
 Delta R.T.: 0.006 min  
 Response: 1578849  
 Conc: 4.48 ng/ml



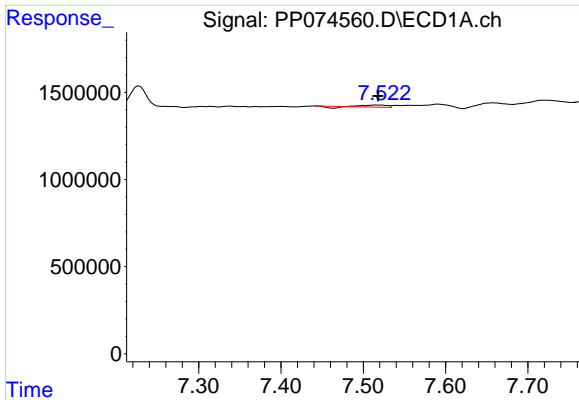
#28 AR-1254-3

R.T.: 7.228 min  
 Delta R.T.: -0.009 min  
 Response: 1966395  
 Conc: 22.04 ng/ml



#28 AR-1254-3

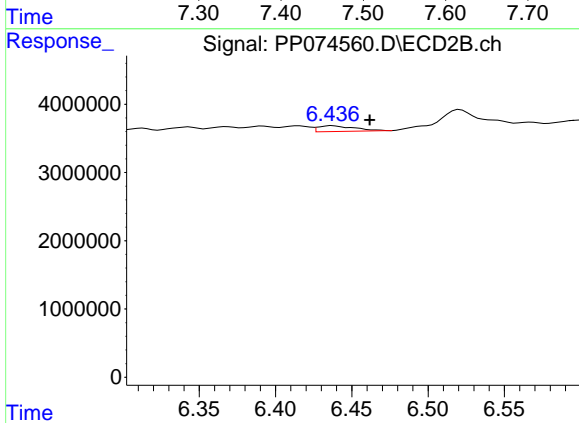
R.T.: 6.241 min  
 Delta R.T.: 0.006 min  
 Response: 1501059  
 Conc: 2.42 ng/ml



#29 AR-1254-4

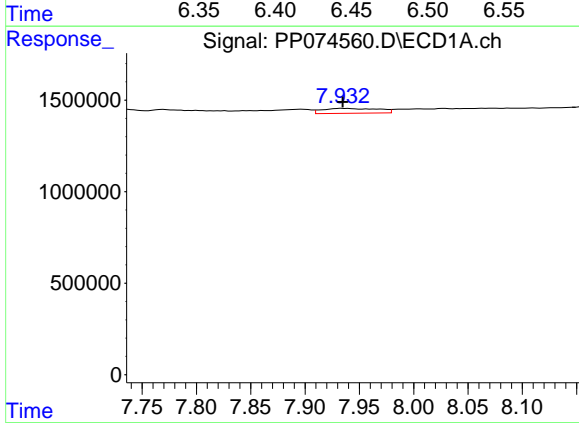
R.T.: 7.517 min  
 Delta R.T.: -0.001 min  
 Response: 143240  
 Conc: 2.17 ng/ml

Instrument :  
 ECD\_P  
 ClientSampleId :  
 I.BLK



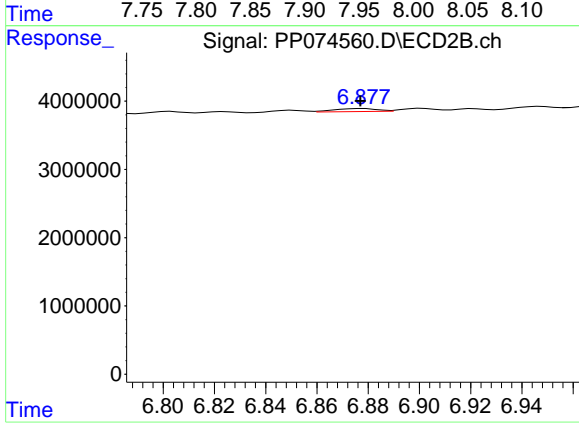
#29 AR-1254-4

R.T.: 6.437 min  
 Delta R.T.: -0.024 min  
 Response: 1425037  
 Conc: 3.04 ng/ml



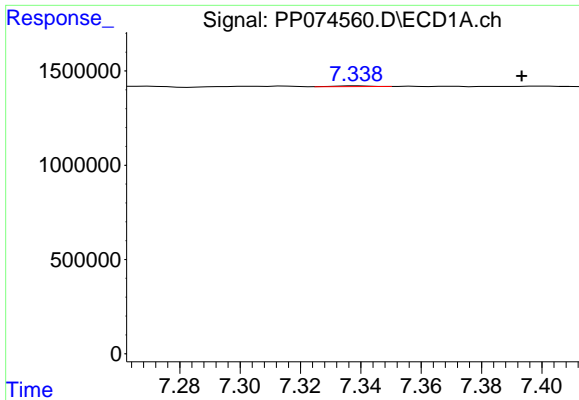
#30 AR-1254-5

R.T.: 7.934 min  
 Delta R.T.: 0.000 min  
 Response: 962494  
 Conc: 11.58 ng/ml



#30 AR-1254-5

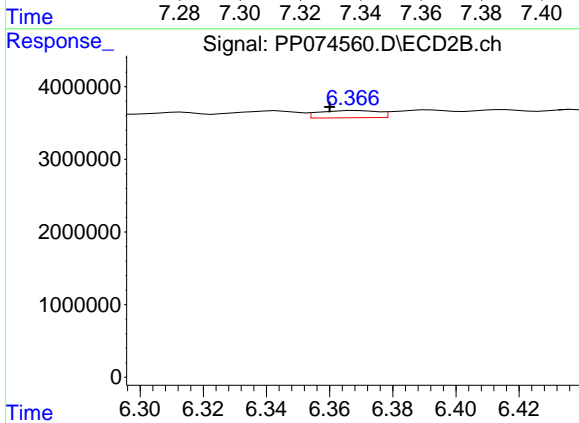
R.T.: 6.878 min  
 Delta R.T.: 0.001 min  
 Response: 537690  
 Conc: 1.10 ng/ml



#31 AR-1260-1

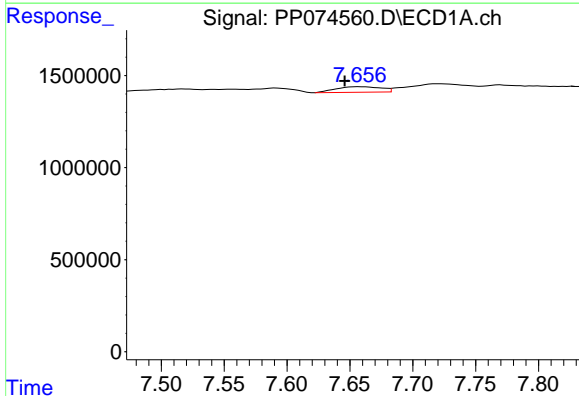
R.T.: 7.339 min  
 Delta R.T.: -0.055 min  
 Response: 31203  
 Conc: 0.54 ng/ml

Instrument :  
 ECD\_P  
 ClientSampleId :  
 I.BLK



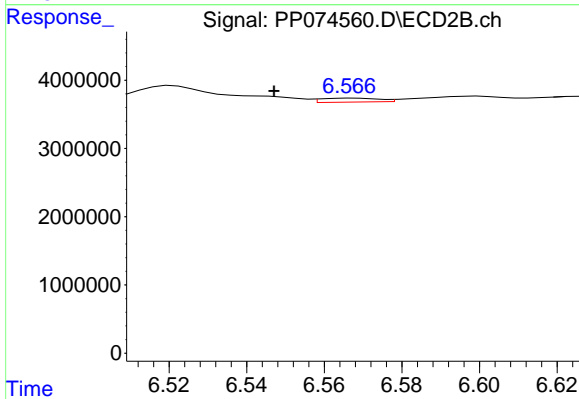
#31 AR-1260-1

R.T.: 6.368 min  
 Delta R.T.: 0.008 min  
 Response: 1296171  
 Conc: 3.45 ng/ml



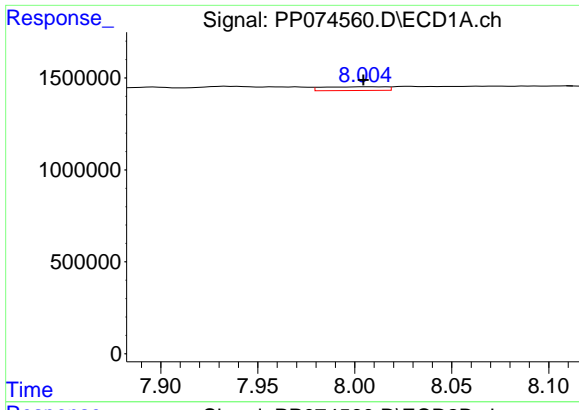
#32 AR-1260-2

R.T.: 7.657 min  
 Delta R.T.: 0.011 min  
 Response: 754556  
 Conc: 10.95 ng/ml



#32 AR-1260-2

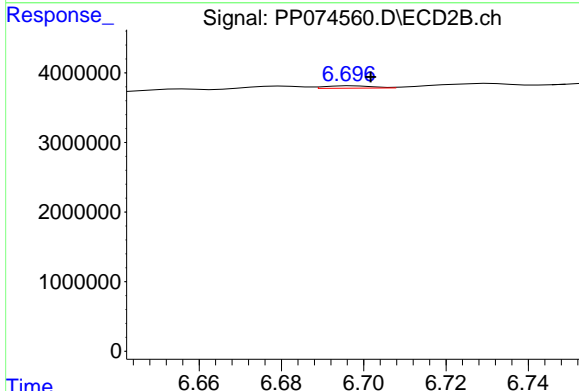
R.T.: 6.568 min  
 Delta R.T.: 0.021 min  
 Response: 602535  
 Conc: 1.14 ng/ml



#33 AR-1260-3

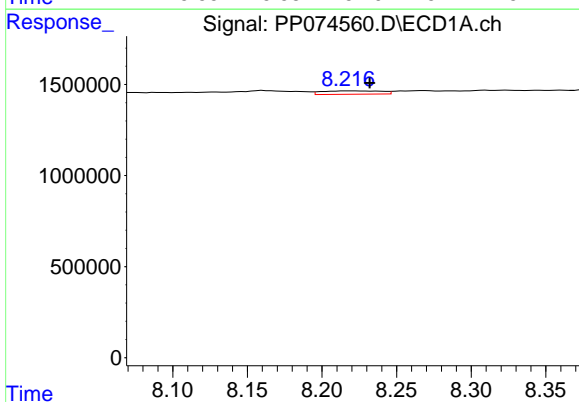
R.T.: 8.006 min  
 Delta R.T.: 0.001 min  
 Response: 456041  
 Conc: 8.79 ng/ml

Instrument : ECD\_P  
 ClientSampleId : I.BLK



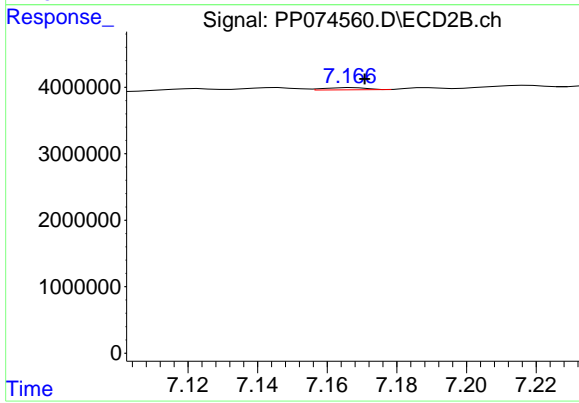
#33 AR-1260-3

R.T.: 6.697 min  
 Delta R.T.: -0.004 min  
 Response: 275755  
 Conc: 0.64 ng/ml



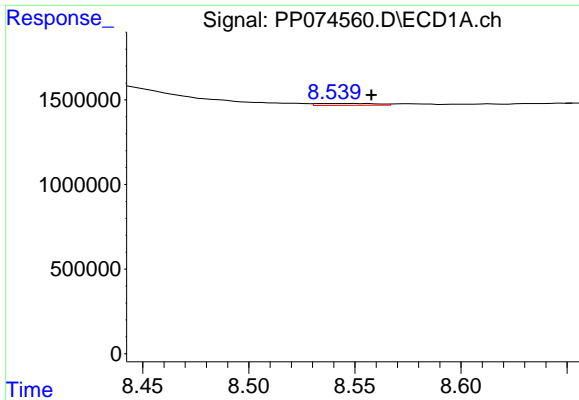
#34 AR-1260-4

R.T.: 8.219 min  
 Delta R.T.: -0.014 min  
 Response: 518231  
 Conc: 8.12 ng/ml



#34 AR-1260-4

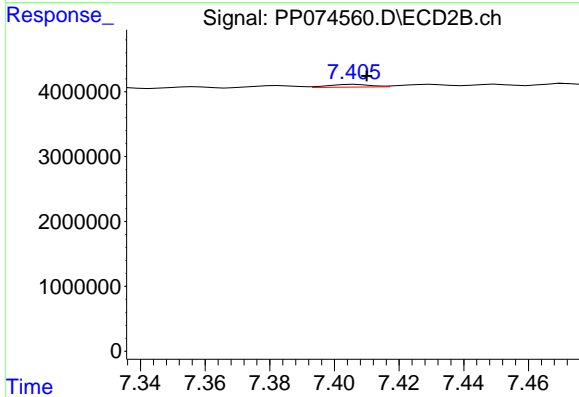
R.T.: 7.167 min  
 Delta R.T.: -0.003 min  
 Response: 271241  
 Conc: 0.71 ng/ml



#35 AR-1260-5

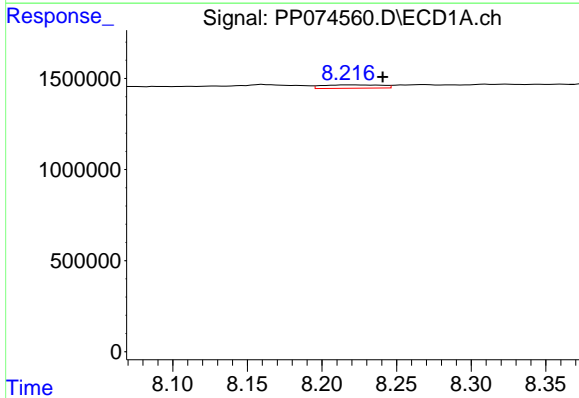
R.T.: 8.549 min  
 Delta R.T.: -0.008 min  
 Response: 220731  
 Conc: 1.95 ng/ml

Instrument :  
 ECD\_P  
 ClientSampleId :  
 I.BLK



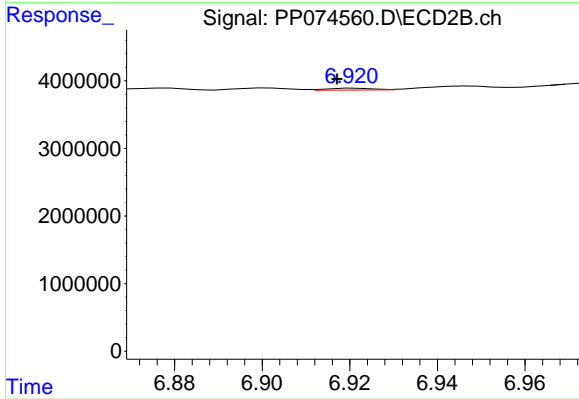
#35 AR-1260-5

R.T.: 7.406 min  
 Delta R.T.: -0.004 min  
 Response: 383460  
 Conc: 0.38 ng/ml



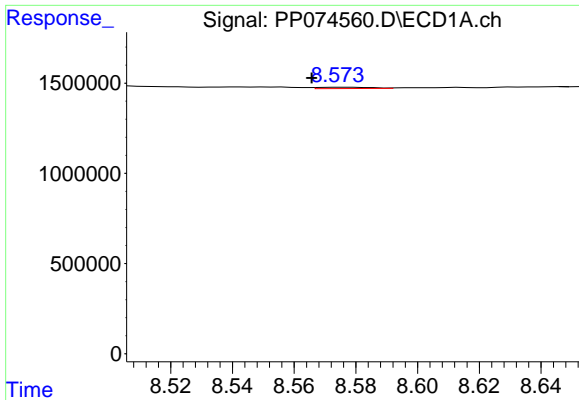
#36 AR-1262-1

R.T.: 8.219 min  
 Delta R.T.: -0.022 min  
 Response: 518231  
 Conc: 6.73 ng/ml



#36 AR-1262-1

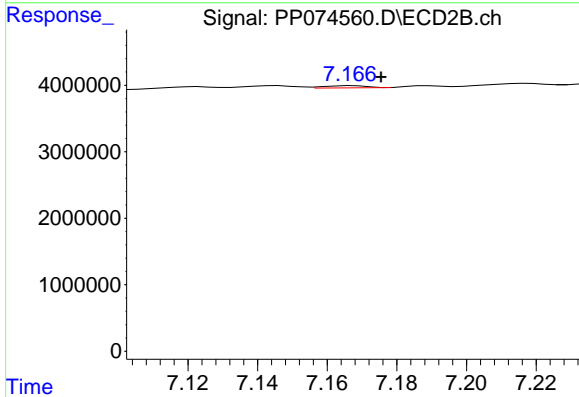
R.T.: 6.921 min  
 Delta R.T.: 0.004 min  
 Response: 194782  
 Conc: 0.28 ng/ml



#37 AR-1262-2

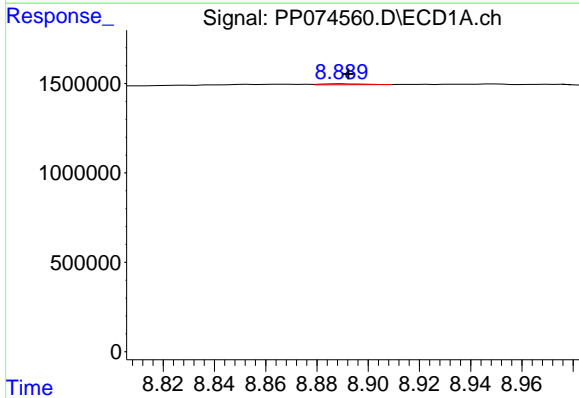
R.T.: 8.575 min  
 Delta R.T.: 0.009 min  
 Response: 92200  
 Conc: 0.70 ng/ml

Instrument :  
 ECD\_P  
 ClientSampleId :  
 I.BLK



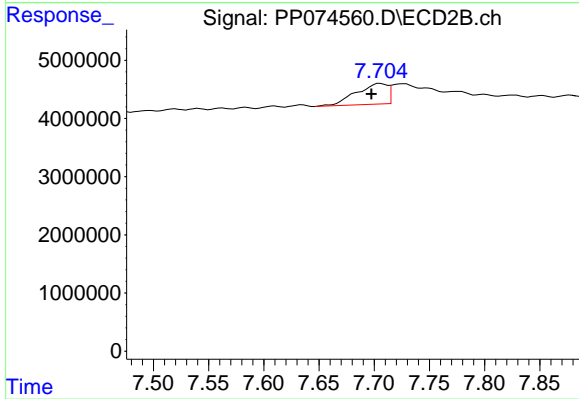
#37 AR-1262-2

R.T.: 7.167 min  
 Delta R.T.: -0.008 min  
 Response: 271241  
 Conc: 0.52 ng/ml



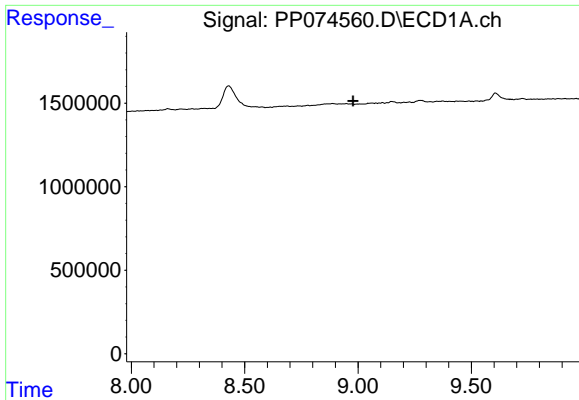
#38 AR-1262-3

R.T.: 8.890 min  
 Delta R.T.: -0.002 min  
 Response: 55298  
 Conc: 0.57 ng/ml



#38 AR-1262-3

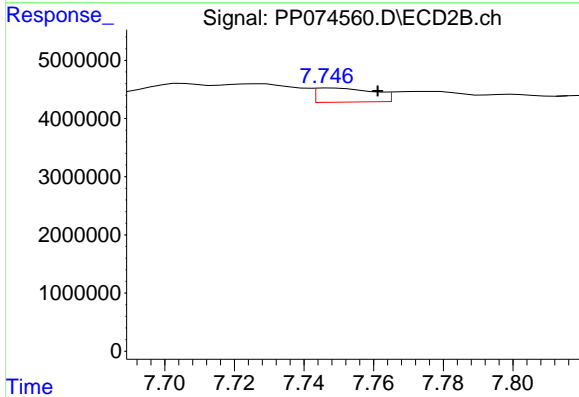
R.T.: 7.705 min  
 Delta R.T.: 0.008 min  
 Response: 7002383  
 Conc: 15.02 ng/ml



#39 AR-1262-4

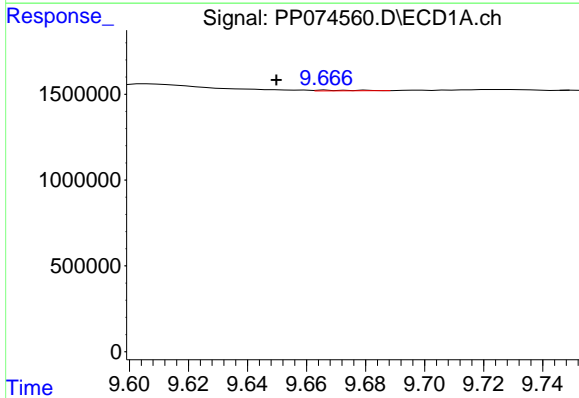
R.T.: 0.000 min  
 Exp R.T.: 8.979 min  
 Response: 0  
 Conc: N.D.

Instrument : ECD\_P  
 ClientSampleId : I.BLK



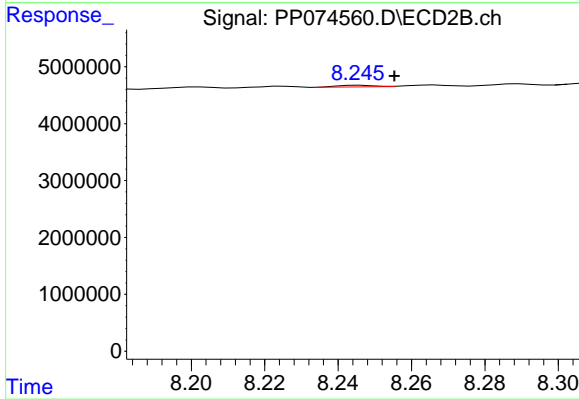
#39 AR-1262-4

R.T.: 7.748 min  
 Delta R.T.: -0.013 min  
 Response: 2780826  
 Conc: 3.38 ng/ml



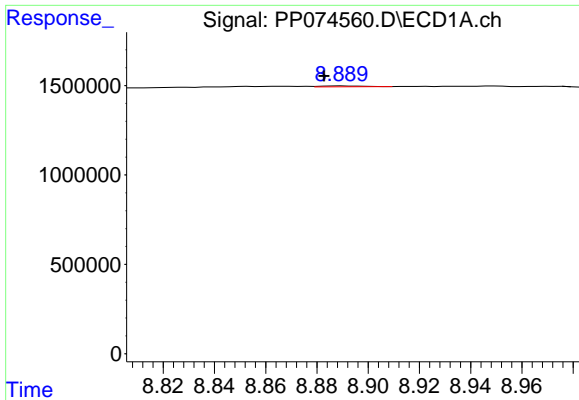
#40 AR-1262-5

R.T.: 9.667 min  
 Delta R.T.: 0.017 min  
 Response: 41945  
 Conc: 0.69 ng/ml



#40 AR-1262-5

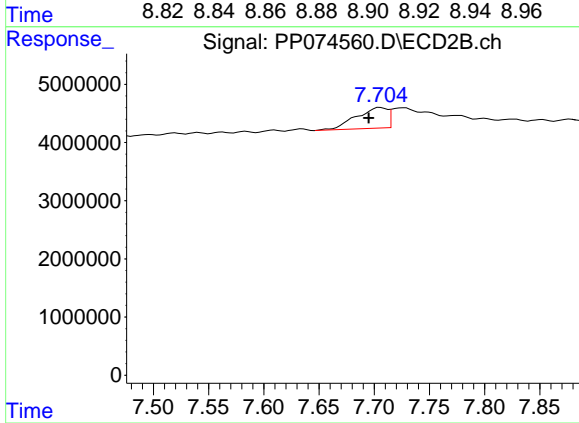
R.T.: 8.246 min  
 Delta R.T.: -0.009 min  
 Response: 199667  
 Conc: 0.56 ng/ml



#41 AR-1268-1

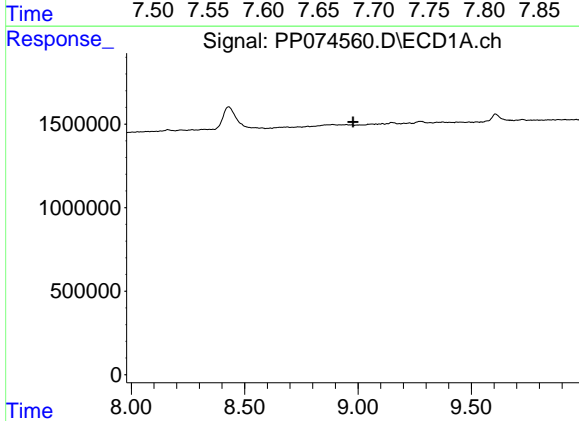
R.T.: 8.890 min  
 Delta R.T.: 0.007 min  
 Response: 55298  
 Conc: 0.34 ng/ml

Instrument :  
 ECD\_P  
 ClientSampleId :  
 I.BLK



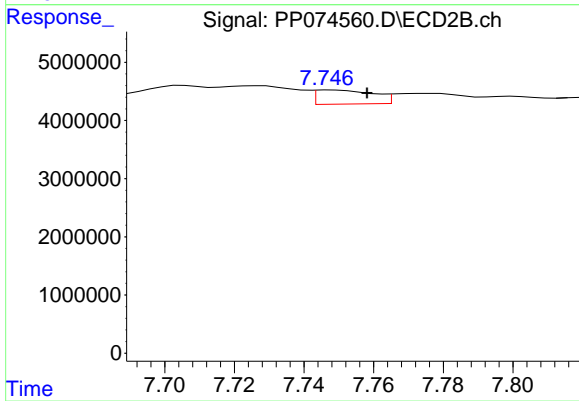
#41 AR-1268-1

R.T.: 7.705 min  
 Delta R.T.: 0.010 min  
 Response: 7002383  
 Conc: 4.96 ng/ml



#42 AR-1268-2

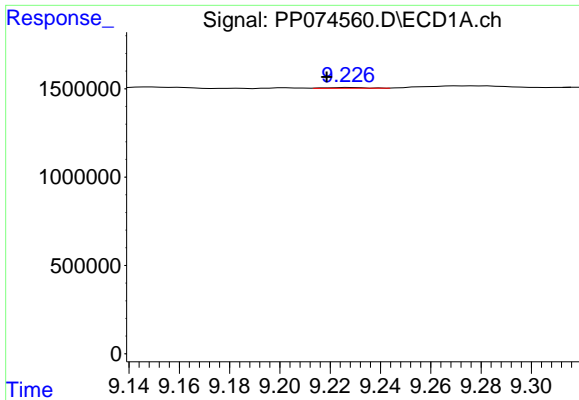
R.T.: 0.000 min  
 Exp R.T. : 8.978 min  
 Response: 0  
 Conc: N.D.



#42 AR-1268-2

R.T.: 7.748 min  
 Delta R.T.: -0.010 min  
 Response: 2780826  
 Conc: 2.04 ng/ml

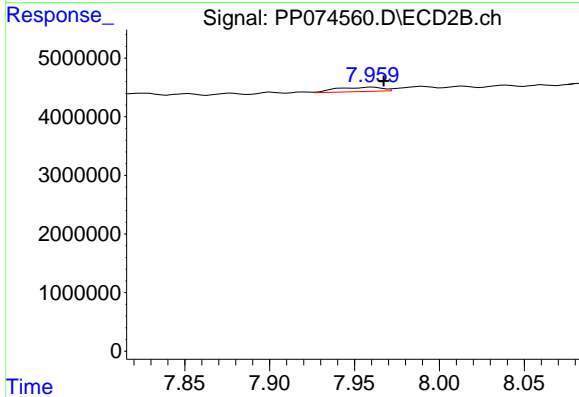




#43 AR-1268-3

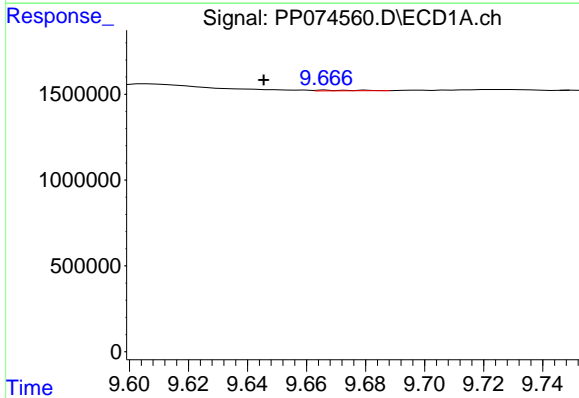
R.T.: 9.228 min  
 Delta R.T.: 0.009 min  
 Response: 39602  
 Conc: 0.32 ng/ml

Instrument :  
 ECD\_P  
 ClientSampleId :  
 I.BLK



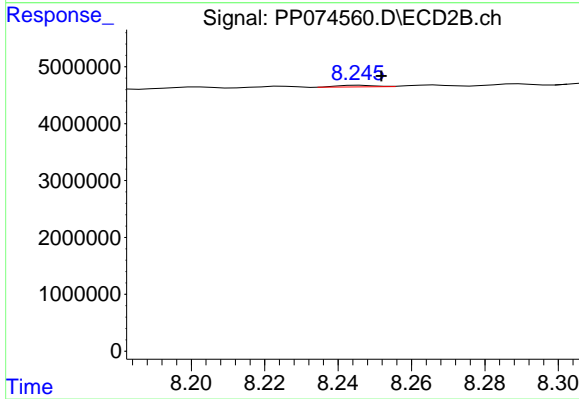
#43 AR-1268-3

R.T.: 7.961 min  
 Delta R.T.: -0.007 min  
 Response: 1379851  
 Conc: 1.32 ng/ml



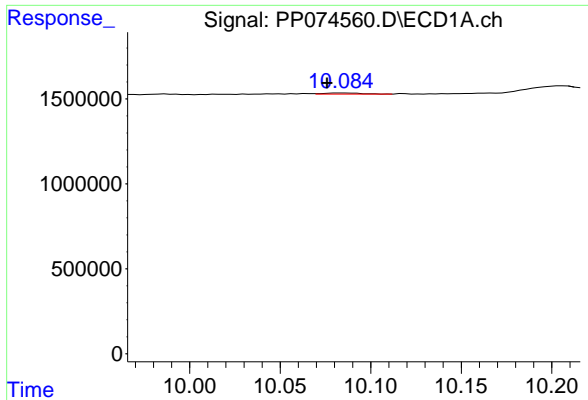
#44 AR-1268-4

R.T.: 9.667 min  
 Delta R.T.: 0.022 min  
 Response: 41945  
 Conc: 0.62 ng/ml



#44 AR-1268-4

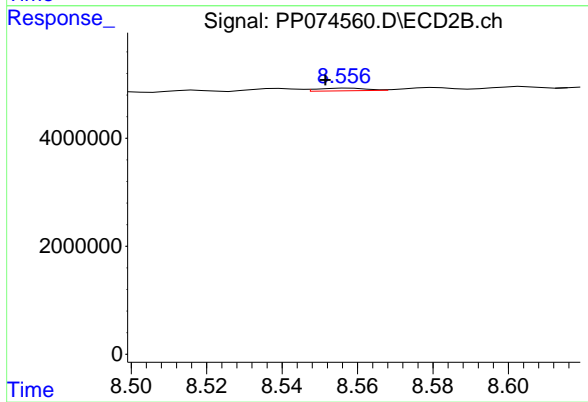
R.T.: 8.246 min  
 Delta R.T.: -0.006 min  
 Response: 199667  
 Conc: 0.52 ng/ml



#45 AR-1268-5

R.T.: 10.085 min  
 Delta R.T.: 0.009 min  
 Response: 95669  
 Conc: 0.26 ng/ml

Instrument :  
 ECD\_P  
 ClientSampleId :  
 I.BLK



#45 AR-1268-5

R.T.: 8.558 min  
 Delta R.T.: 0.006 min  
 Response: 458076  
 Conc: 0.15 ng/ml