

Data Path : Z:\pestpcbsrv\HPCHEM1\ECD_P\Data\PP082125\
 Data File : PP074533.D
 Signal(s) : Signal #1: ECD1A.ch Signal #2: ECD2B.ch
 Acq On : 21 Aug 2025 12:08
 Operator : YP\AJ
 Sample : PB169329BS
 Misc :
 ALS Vial : 9 Sample Multiplier: 1

Instrument :
 ECD_P
 ClientSampleId :
 PB169329BS

Integration File signal 1: autoint1.e
 Integration File signal 2: autoint2.e
 Quant Time: Aug 21 13:00:11 2025
 Quant Method : Z:\pestpcbsrv\HPCHEM1\ECD_P\methods\PP081925.M
 Quant Title : GC EXTRACTABLES
 QLast Update : Wed Aug 20 06:20:44 2025
 Response via : Initial Calibration
 Integrator: ChemStation

Volume Inj. : 2 µl
 Signal #1 Phase : ZB-MR1 Signal #2 Phase: ZB-MR2
 Signal #1 Info : 30Mx0.32mmx 0.50µ Signal #2 Info : 30M x 0.32mm x 0.25µm

Compound	RT#1	RT#2	Resp#1	Resp#2	ng/ml	ng/ml

System Monitoring Compounds						
1) SA Tetrachlo...	4.655	3.798	26226796	91578051	21.433	18.939
2) SA Decachlor...	10.433	8.812	24057136	147.3E6	24.361	19.644
Target Compounds						
3) L1 AR-1016-1	5.806	4.897	20025643	220.4E6	454.211	432.735
4) L1 AR-1016-2	5.828	4.955	30058191	97724917	478.317	410.582
5) L1 AR-1016-3	5.891	5.075	19733065	54738699	439.353	396.935
6) L1 AR-1016-4	5.988	5.116	16335303	55469096	464.311	396.765
7) L1 AR-1016-5	6.280	5.330	15566616	63495027	469.071	382.308
31) L7 AR-1260-1	7.397	6.360	27634488	165.8E6	478.027	441.960
32) L7 AR-1260-2	7.651	6.546	32584632	232.4E6	472.807	439.556
33) L7 AR-1260-3	8.008	6.700	22245916	173.4E6	428.752	400.482
34) L7 AR-1260-4	8.236	7.169	32172760	147.5E6	504.332	386.748
35) L7 AR-1260-5	8.562	7.408	47821928	386.2E6	421.665	384.483

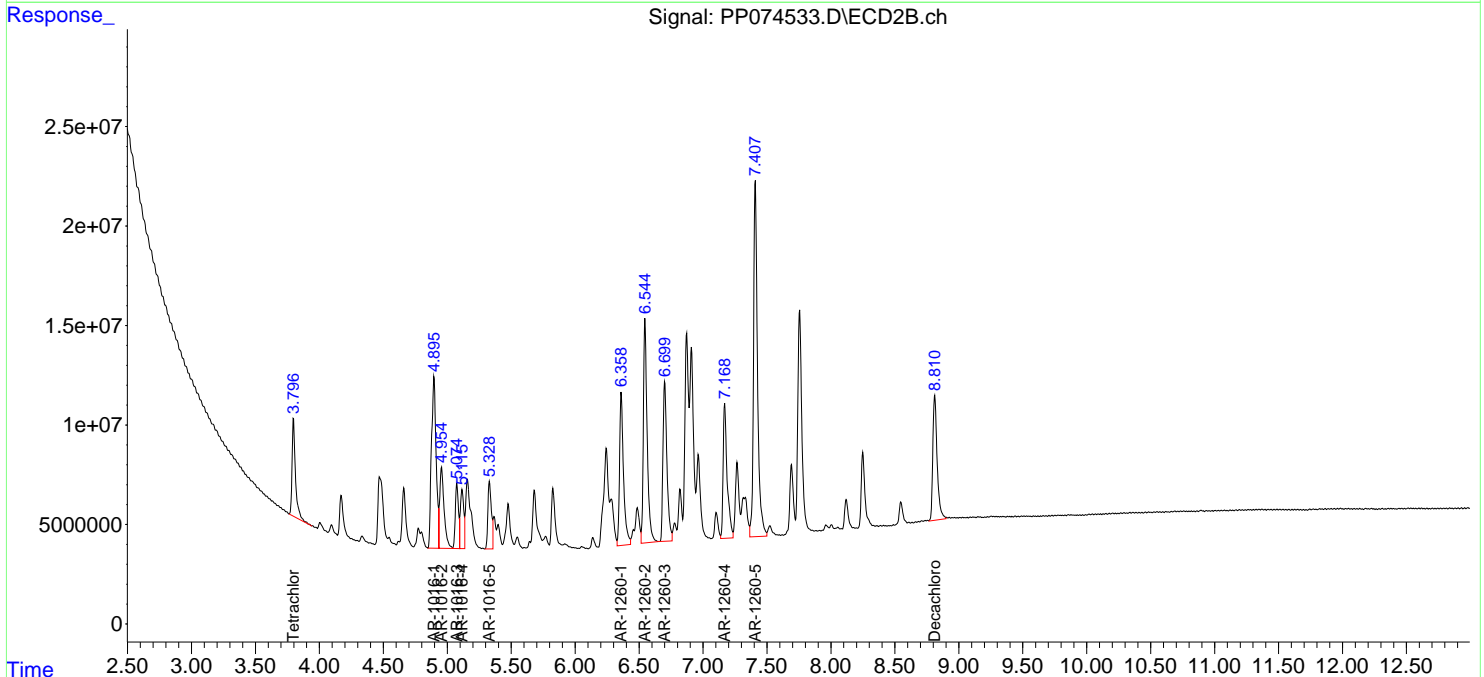
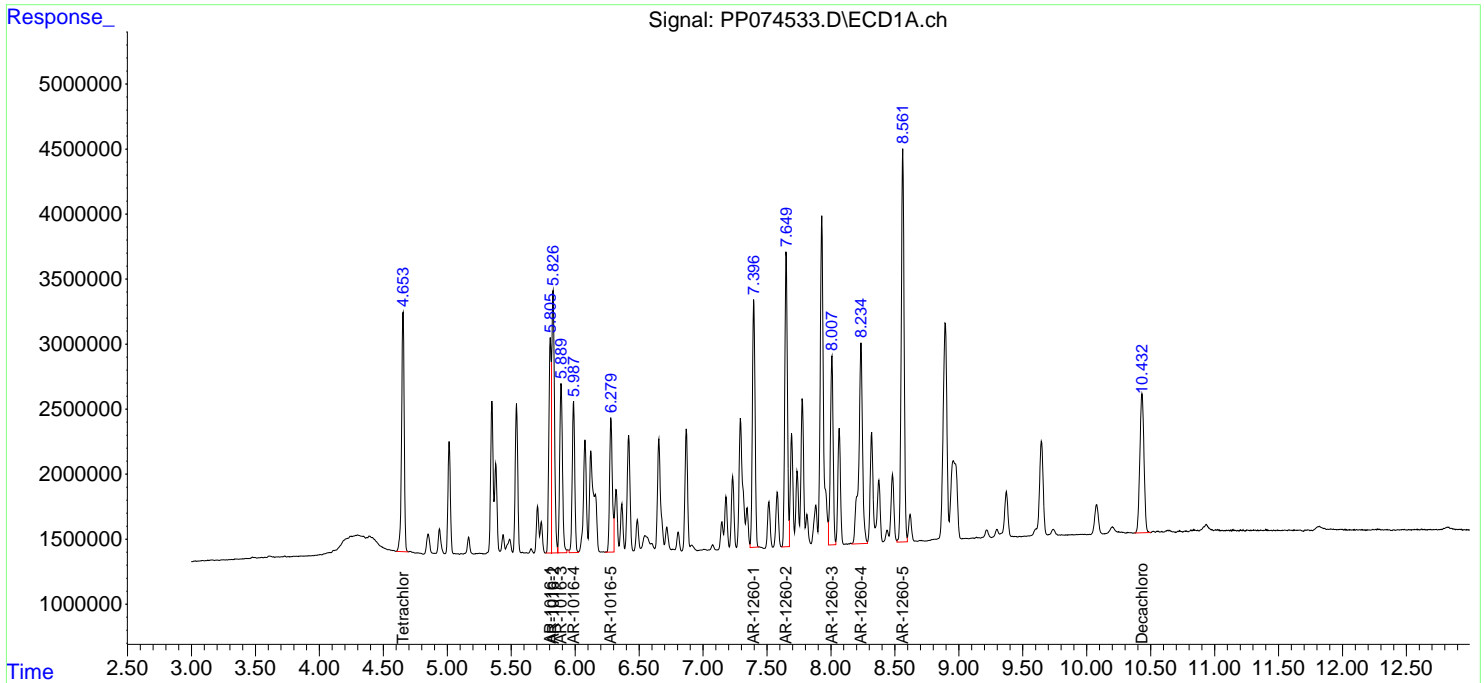
(f)=RT Delta > 1/2 Window (#)=Amounts differ by > 25% (m)=manual int.

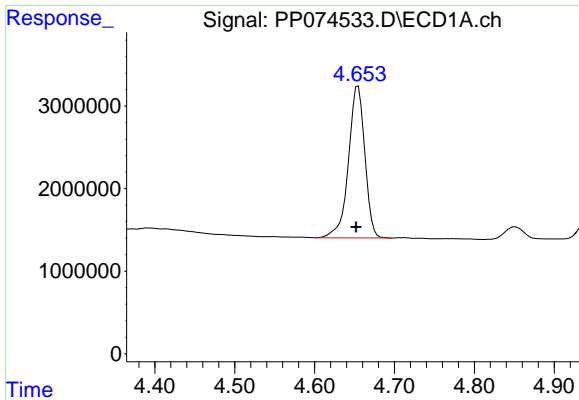
Data Path : Z:\pestpcbsrv\HPCHEM1\ECD_P\Data\PP082125\
 Data File : PP074533.D
 Signal(s) : Signal #1: ECD1A.ch Signal #2: ECD2B.ch
 Acq On : 21 Aug 2025 12:08
 Operator : YP\AJ
 Sample : PB169329BS
 Misc :
 ALS Vial : 9 Sample Multiplier: 1

Instrument :
 ECD_P
 ClientSampleId :
 PB169329BS

Integration File signal 1: autoint1.e
 Integration File signal 2: autoint2.e
 Quant Time: Aug 21 13:00:11 2025
 Quant Method : Z:\pestpcbsrv\HPCHEM1\ECD_P\methods\PP081925.M
 Quant Title : GC EXTRACTABLES
 QLast Update : Wed Aug 20 06:20:44 2025
 Response via : Initial Calibration
 Integrator: ChemStation

Volume Inj. : 2 µl
 Signal #1 Phase : ZB-MR1 Signal #2 Phase: ZB-MR2
 Signal #1 Info : 30Mx0.32mmx 0.50µ Signal #2 Info : 30M x 0.32mm x 0.25µm

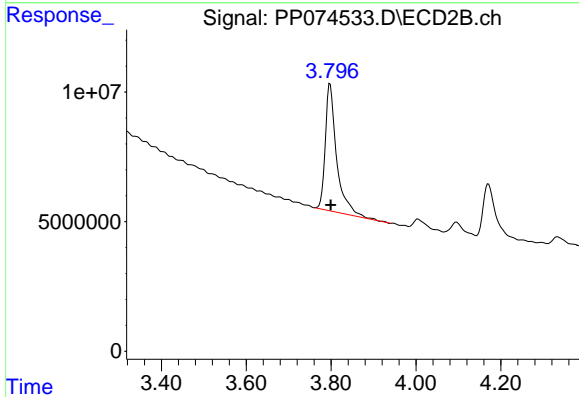




#1 Tetrachloro-m-xylene

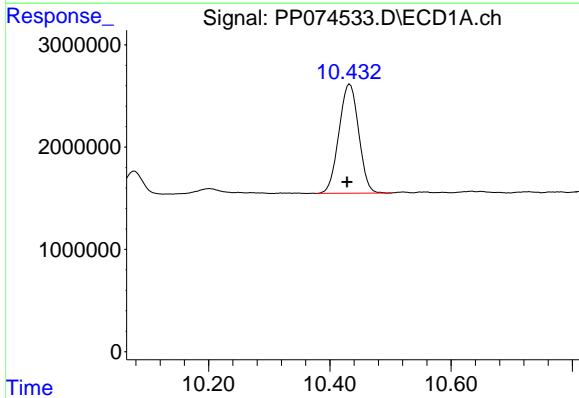
R.T.: 4.655 min
 Delta R.T.: 0.003 min
 Response: 26226796
 Conc: 21.43 ng/ml

Instrument :
 ECD_P
 ClientSampleId :
 PB169329BS



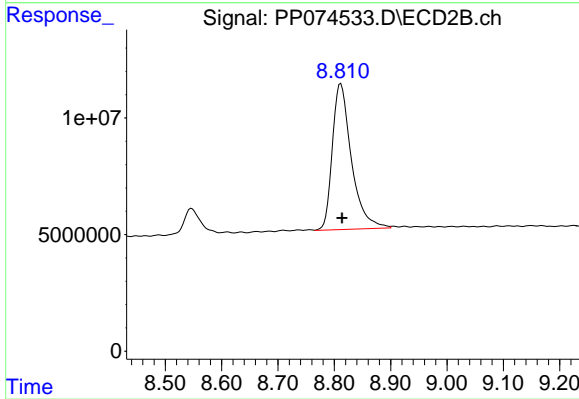
#1 Tetrachloro-m-xylene

R.T.: 3.798 min
 Delta R.T.: -0.001 min
 Response: 91578051
 Conc: 18.94 ng/ml



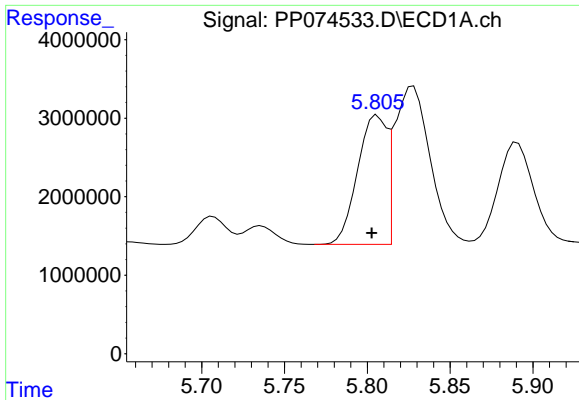
#2 Decachlorobiphenyl

R.T.: 10.433 min
 Delta R.T.: 0.005 min
 Response: 24057136
 Conc: 24.36 ng/ml



#2 Decachlorobiphenyl

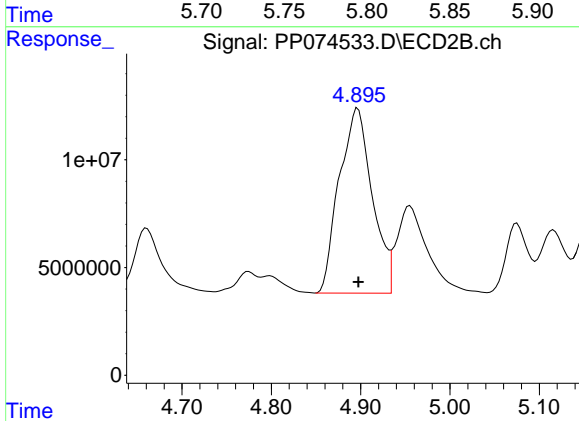
R.T.: 8.812 min
 Delta R.T.: -0.002 min
 Response: 147311458
 Conc: 19.64 ng/ml



#3 AR-1016-1

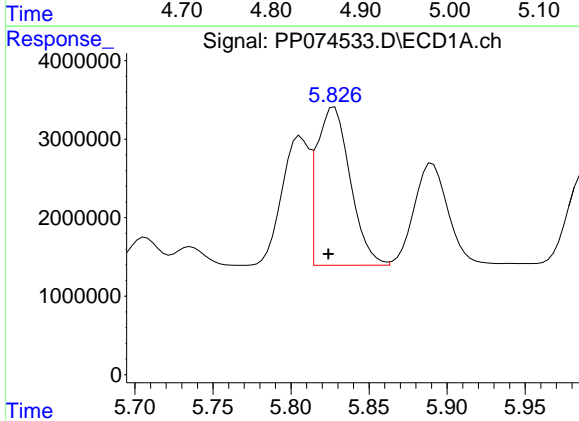
R.T.: 5.806 min
 Delta R.T.: 0.003 min
 Response: 20025643
 Conc: 454.21 ng/ml

Instrument :
 ECD_P
 ClientSampleId :
 PB169329BS



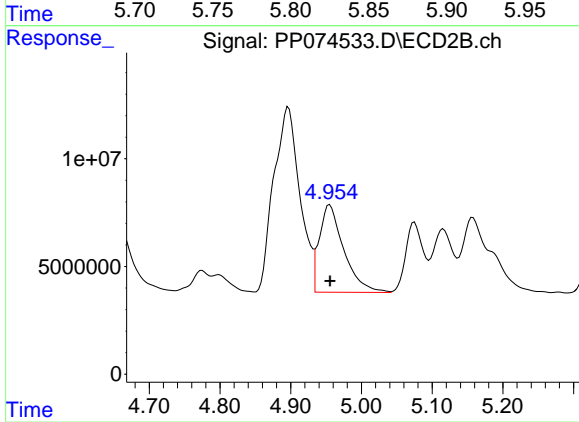
#3 AR-1016-1

R.T.: 4.897 min
 Delta R.T.: 0.000 min
 Response: 220415180
 Conc: 432.73 ng/ml



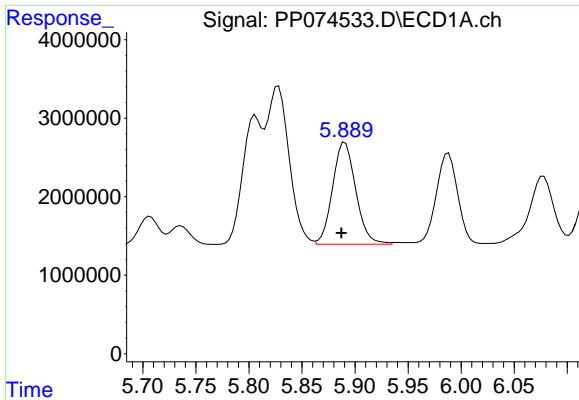
#4 AR-1016-2

R.T.: 5.828 min
 Delta R.T.: 0.004 min
 Response: 30058191
 Conc: 478.32 ng/ml



#4 AR-1016-2

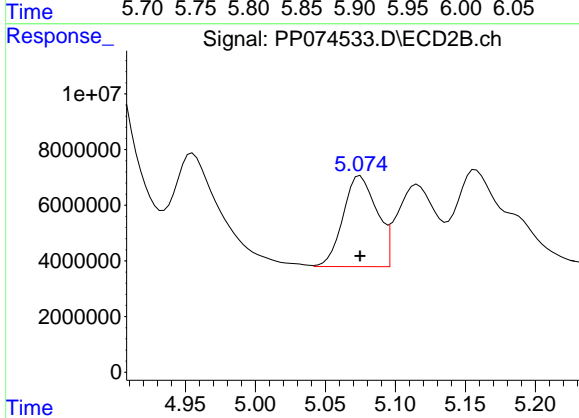
R.T.: 4.955 min
 Delta R.T.: 0.000 min
 Response: 97724917
 Conc: 410.58 ng/ml



#5 AR-1016-3

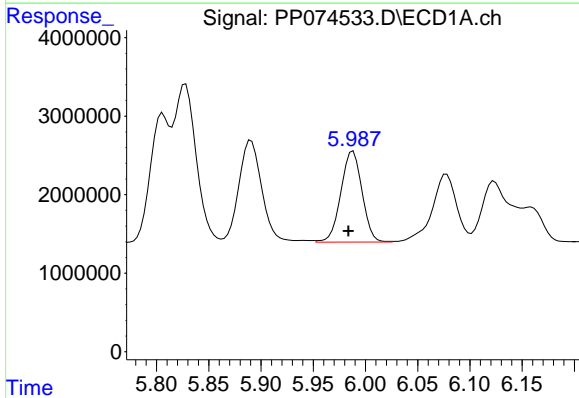
R.T.: 5.891 min
 Delta R.T.: 0.004 min
 Response: 19733065
 Conc: 439.35 ng/ml

Instrument :
 ECD_P
 ClientSampleId :
 PB169329BS



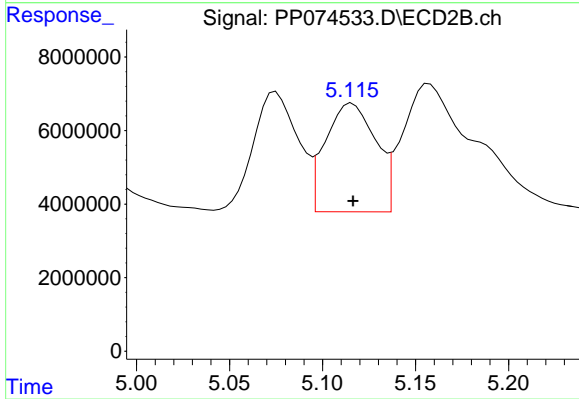
#5 AR-1016-3

R.T.: 5.075 min
 Delta R.T.: 0.000 min
 Response: 54738699
 Conc: 396.93 ng/ml



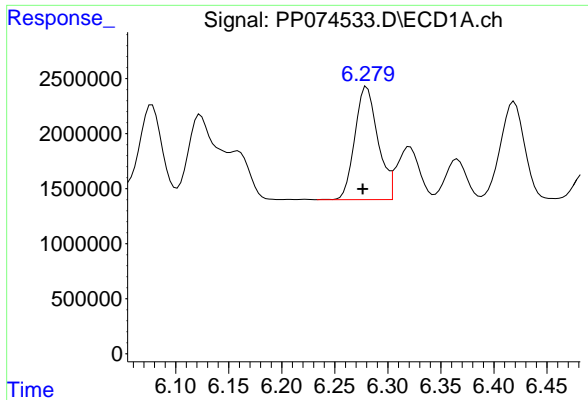
#6 AR-1016-4

R.T.: 5.988 min
 Delta R.T.: 0.004 min
 Response: 16335303
 Conc: 464.31 ng/ml



#6 AR-1016-4

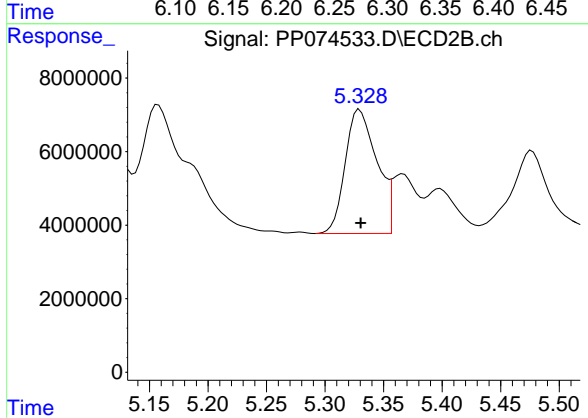
R.T.: 5.116 min
 Delta R.T.: 0.000 min
 Response: 55469096
 Conc: 396.77 ng/ml



#7 AR-1016-5

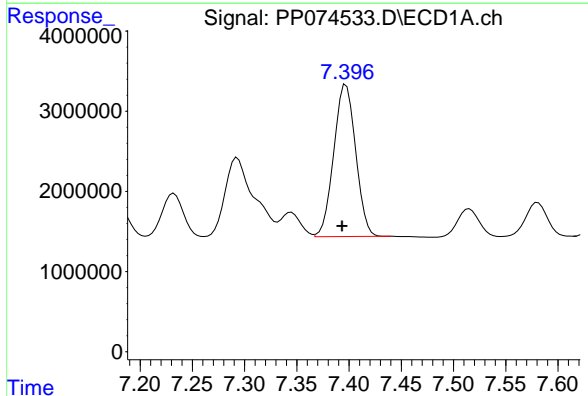
R.T.: 6.280 min
 Delta R.T.: 0.004 min
 Response: 15566616
 Conc: 469.07 ng/ml

Instrument :
 ECD_P
 ClientSampleId :
 PB169329BS



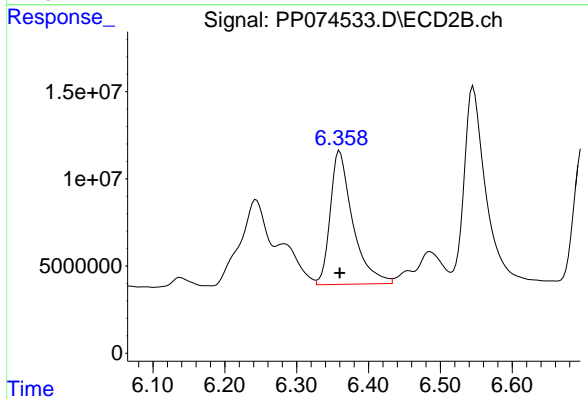
#7 AR-1016-5

R.T.: 5.330 min
 Delta R.T.: 0.000 min
 Response: 63495027
 Conc: 382.31 ng/ml



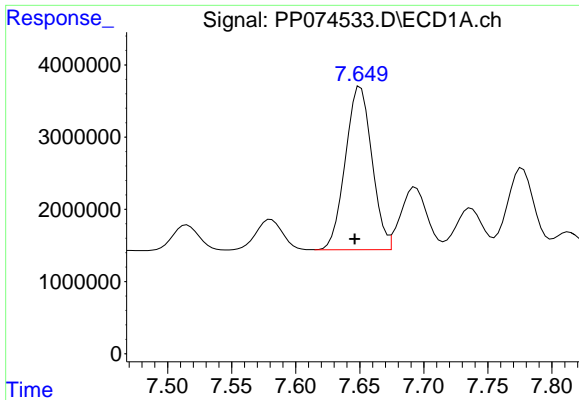
#31 AR-1260-1

R.T.: 7.397 min
 Delta R.T.: 0.004 min
 Response: 27634488
 Conc: 478.03 ng/ml



#31 AR-1260-1

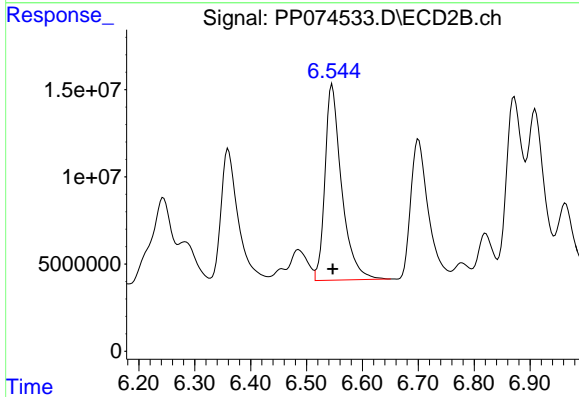
R.T.: 6.360 min
 Delta R.T.: 0.000 min
 Response: 165833864
 Conc: 441.96 ng/ml



#32 AR-1260-2

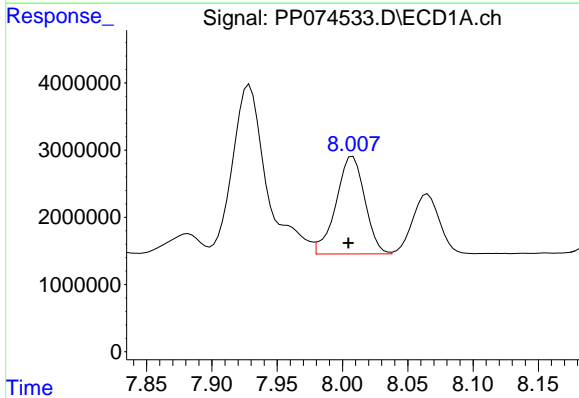
R.T.: 7.651 min
 Delta R.T.: 0.005 min
 Response: 32584632
 Conc: 472.81 ng/ml

Instrument :
 ECD_P
 ClientSampleId :
 PB169329BS



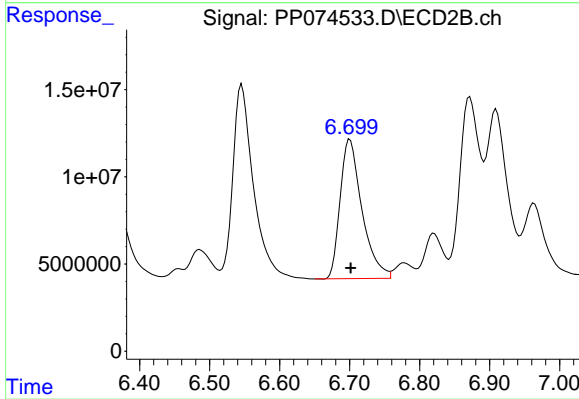
#32 AR-1260-2

R.T.: 6.546 min
 Delta R.T.: -0.001 min
 Response: 232444034
 Conc: 439.56 ng/ml



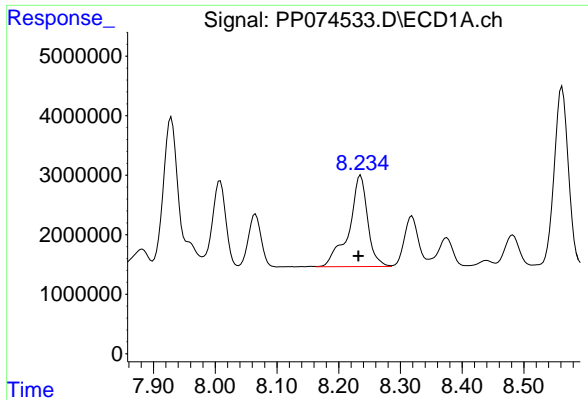
#33 AR-1260-3

R.T.: 8.008 min
 Delta R.T.: 0.003 min
 Response: 22245916
 Conc: 428.75 ng/ml



#33 AR-1260-3

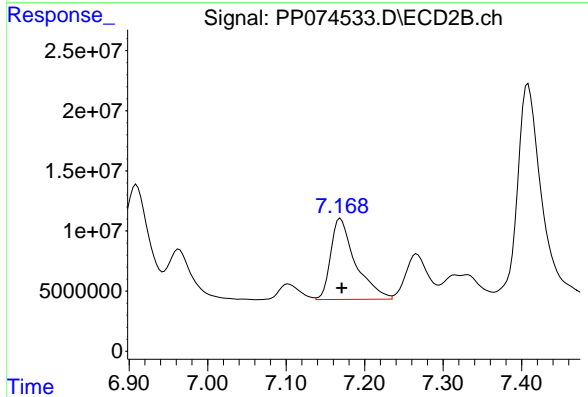
R.T.: 6.700 min
 Delta R.T.: -0.001 min
 Response: 173409087
 Conc: 400.48 ng/ml



#34 AR-1260-4

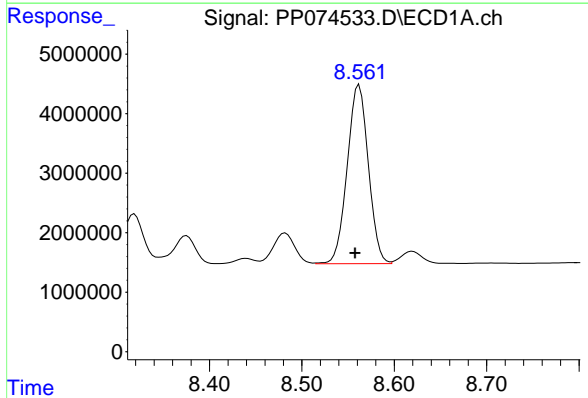
R.T.: 8.236 min
 Delta R.T.: 0.004 min
 Response: 32172760
 Conc: 504.33 ng/ml

Instrument :
 ECD_P
 ClientSampleId :
 PB169329BS



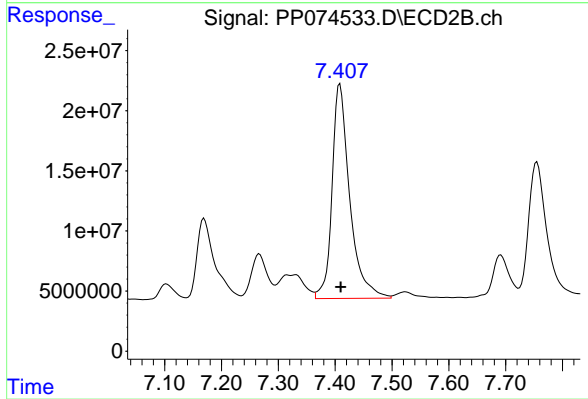
#34 AR-1260-4

R.T.: 7.169 min
 Delta R.T.: -0.002 min
 Response: 147534086
 Conc: 386.75 ng/ml



#35 AR-1260-5

R.T.: 8.562 min
 Delta R.T.: 0.004 min
 Response: 47821928
 Conc: 421.67 ng/ml



#35 AR-1260-5

R.T.: 7.408 min
 Delta R.T.: -0.002 min
 Response: 386205962
 Conc: 384.48 ng/ml