

Data Path : Z:\pestpcbsrv\HPCHEM1\ECD_P\Data\PP082125\
 Data File : PP074541.D
 Signal(s) : Signal #1: ECD1A.ch Signal #2: ECD2B.ch
 Acq On : 21 Aug 2025 15:07
 Operator : YP\AJ
 Sample : AR1660CCC500
 Misc :
 ALS Vial : 3 Sample Multiplier: 1

Instrument :
 ECD_P
ClientSampleId :
 AR1660CCC500

Manual Integrations
APPROVED
 Reviewed By :Yogesh Patel 08/22/2025
 Supervised By :mohammad ahmed 08/25/2025

Integration File signal 1: autoint1.e
 Integration File signal 2: autoint2.e
 Quant Time: Aug 22 00:22:36 2025
 Quant Method : Z:\pestpcbsrv\HPCHEM1\ECD_P\methods\PP081925.M
 Quant Title : GC EXTRACTABLES
 QLast Update : Wed Aug 20 06:20:44 2025
 Response via : Initial Calibration
 Integrator: ChemStation

Volume Inj. : 2 µl
 Signal #1 Phase : ZB-MR1 Signal #2 Phase: ZB-MR2
 Signal #1 Info : 30Mx0.32mmx 0.50µ Signal #2 Info : 30M x 0.32mm x 0.25µm

Compound	RT#1	RT#2	Resp#1	Resp#2	ng/ml	ng/ml

System Monitoring Compounds						
1) SA Tetrachlo...	4.659	3.802	57604416	231.1E6	47.074	47.801
2) SA Decachlor...	10.437	8.816	48801977	330.8E6	49.419	44.111
Target Compounds						
3) L1 AR-1016-1	5.811	4.901	20774015	245.9E6	471.185	482.691
4) L1 AR-1016-2	5.832	4.958	30428075	115.6E6	484.202	485.709
5) L1 AR-1016-3	5.895	5.079	20449672	65416288	455.308	474.362
6) L1 AR-1016-4	5.992	5.119	16747736	66844597	476.034	478.133
7) L1 AR-1016-5	6.285	5.333	16380268	73242226	493.589	440.997
31) L7 AR-1260-1	7.402	6.364	27423964	166.3E6	474.385	443.155
32) L7 AR-1260-2	7.654	6.550	32792833	227.1E6	475.828	429.439
33) L7 AR-1260-3	8.012	6.702	26269866	174.9E6	506.307	404.024m
34) L7 AR-1260-4	8.241	7.174	31316664	162.3E6	490.912	425.362
35) L7 AR-1260-5	8.566	7.413	54182101	421.4E6	477.745	419.545

(f)=RT Delta > 1/2 Window (#)=Amounts differ by > 25% (m)=manual int.

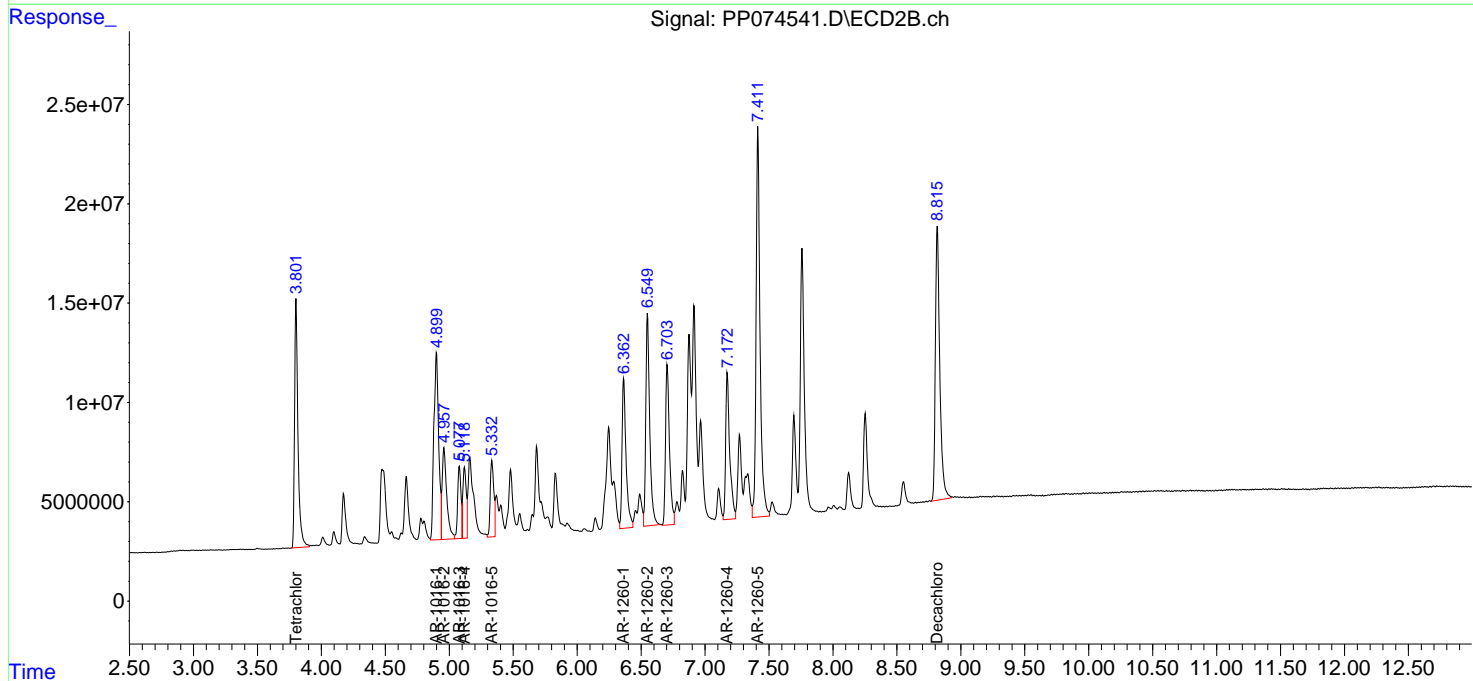
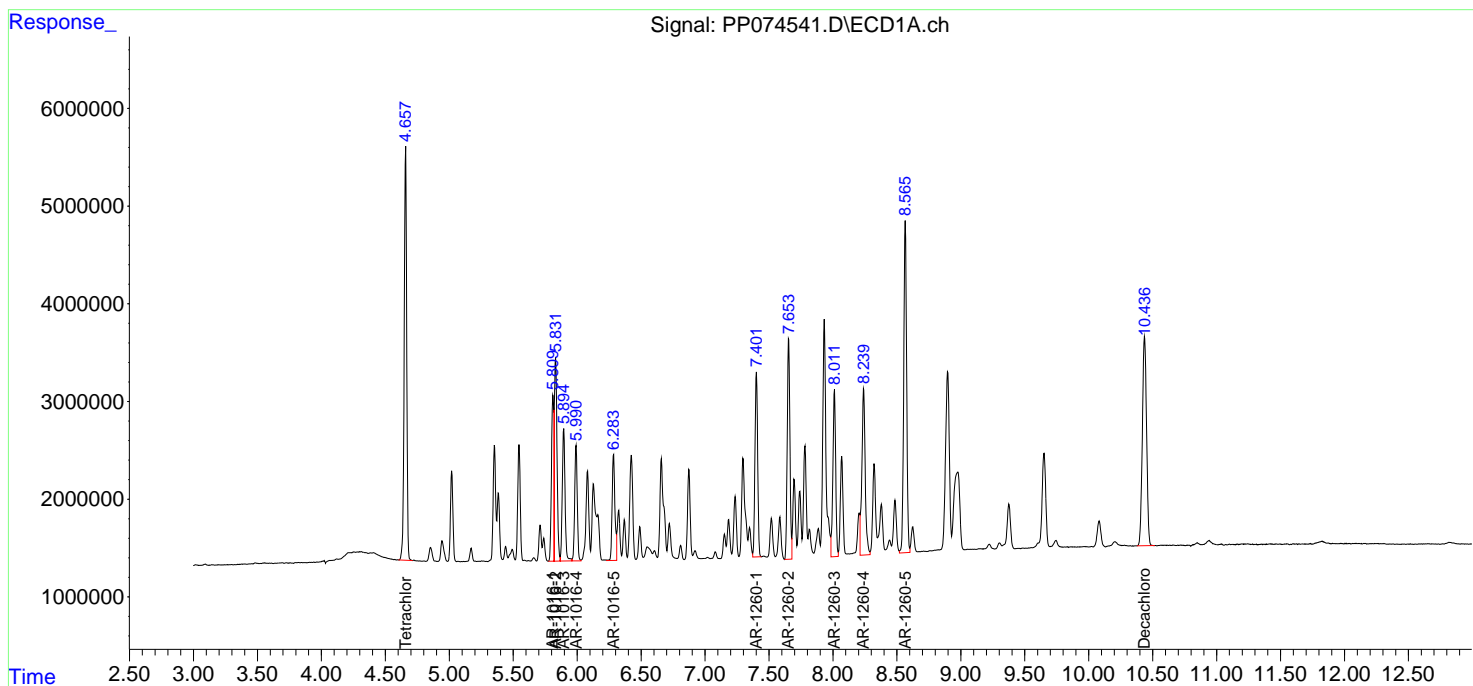
Data Path : Z:\pestpcbsrv\HPCHEM1\ECD_P\Data\PP082125\
 Data File : PP074541.D
 Signal(s) : Signal #1: ECD1A.ch Signal #2: ECD2B.ch
 Acq On : 21 Aug 2025 15:07
 Operator : YP\AJ
 Sample : AR1660CCC500
 Misc :
 ALS Vial : 3 Sample Multiplier: 1

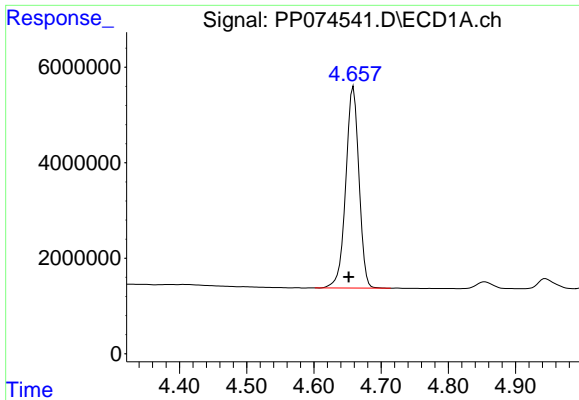
Instrument :
 ECD_P
ClientSampleId :
 AR1660CCC500

Manual Integrations
APPROVED
 Reviewed By :Yogesh Patel 08/22/2025
 Supervised By :mohammad ahmed 08/25/2025

Integration File signal 1: autoint1.e
 Integration File signal 2: autoint2.e
 Quant Time: Aug 22 00:22:36 2025
 Quant Method : Z:\pestpcbsrv\HPCHEM1\ECD_P\methods\PP081925.M
 Quant Title : GC EXTRACTABLES
 QLast Update : Wed Aug 20 06:20:44 2025
 Response via : Initial Calibration
 Integrator: ChemStation

Volume Inj. : 2 µl
 Signal #1 Phase : ZB-MR1 Signal #2 Phase: ZB-MR2
 Signal #1 Info : 30Mx0.32mmx 0.50µ Signal #2 Info : 30M x 0.32mm x 0.25µm



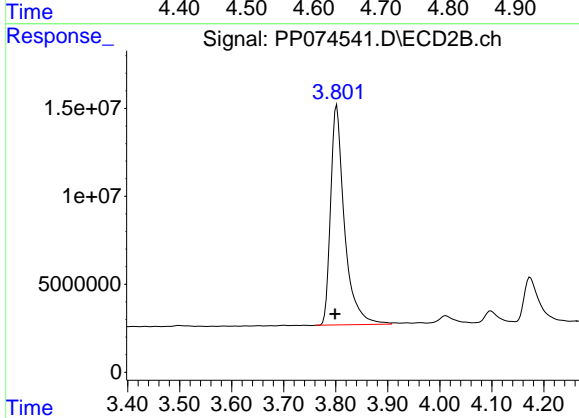


#1 Tetrachloro-m-xylene
R.T.: 4.659 min
Delta R.T.: 0.007 min
Response: 57604416
Conc: 47.07 ng/ml

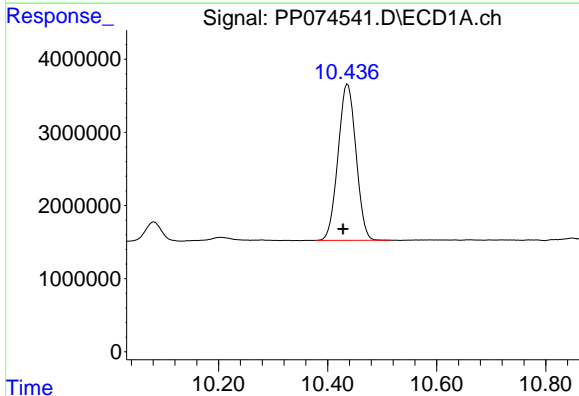
Instrument :
ECD_P
ClientSampleId :
AR1660CCC500

Manual Integrations
APPROVED

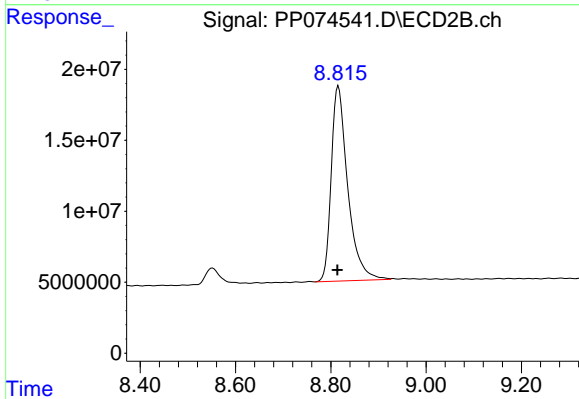
Reviewed By :Yogesh Patel 08/22/2025
Supervised By :mohammad ahmed 08/25/2025



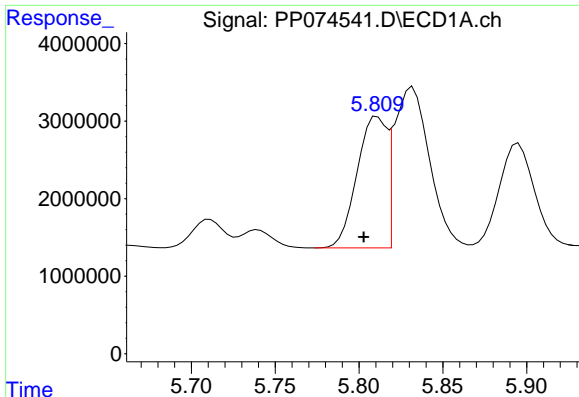
#1 Tetrachloro-m-xylene
R.T.: 3.802 min
Delta R.T.: 0.003 min
Response: 231138815
Conc: 47.80 ng/ml



#2 Decachlorobiphenyl
R.T.: 10.437 min
Delta R.T.: 0.009 min
Response: 48801977
Conc: 49.42 ng/ml



#2 Decachlorobiphenyl
R.T.: 8.816 min
Delta R.T.: 0.002 min
Response: 330796723
Conc: 44.11 ng/ml



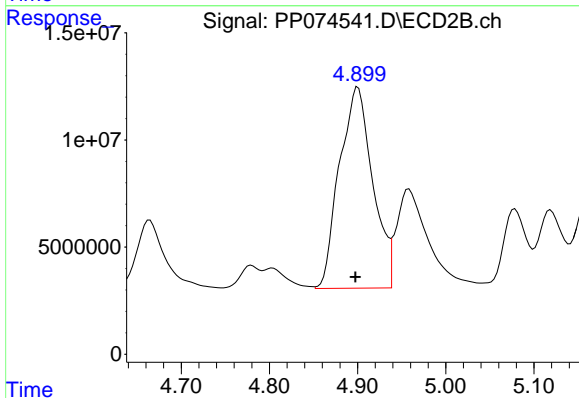
#3 AR-1016-1

R.T.: 5.811 min
 Delta R.T.: 0.008 min
 Response: 20774015
 Conc: 471.19 ng/ml

Instrument :
 ECD_P
 ClientSampleId :
 AR1660CCC500

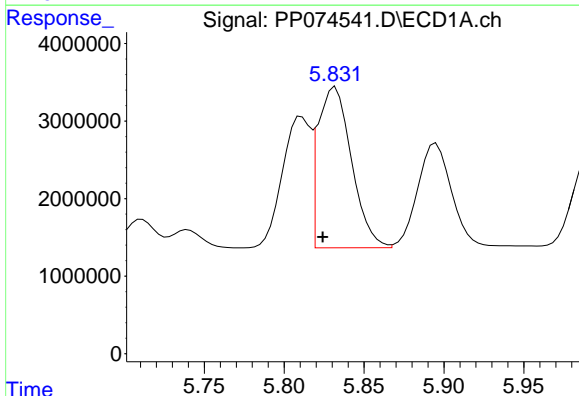
Manual Integrations
 APPROVED

Reviewed By :Yogesh Patel 08/22/2025
 Supervised By :mohammad ahmed 08/25/2025



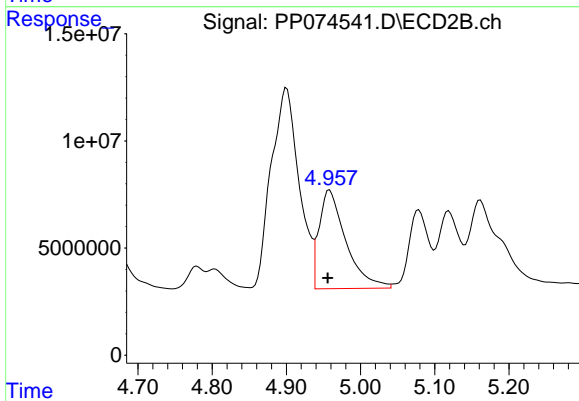
#3 AR-1016-1

R.T.: 4.901 min
 Delta R.T.: 0.003 min
 Response: 245860395
 Conc: 482.69 ng/ml



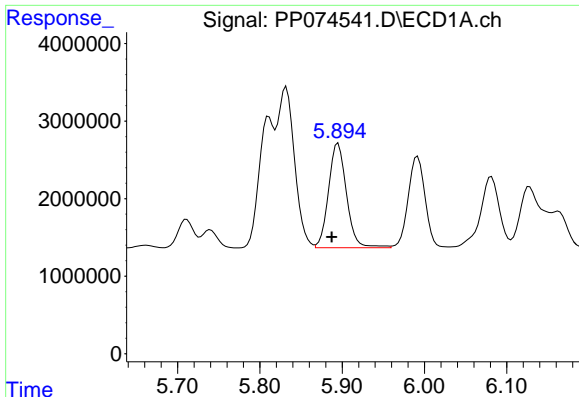
#4 AR-1016-2

R.T.: 5.832 min
 Delta R.T.: 0.008 min
 Response: 30428075
 Conc: 484.20 ng/ml



#4 AR-1016-2

R.T.: 4.958 min
 Delta R.T.: 0.003 min
 Response: 115606269
 Conc: 485.71 ng/ml



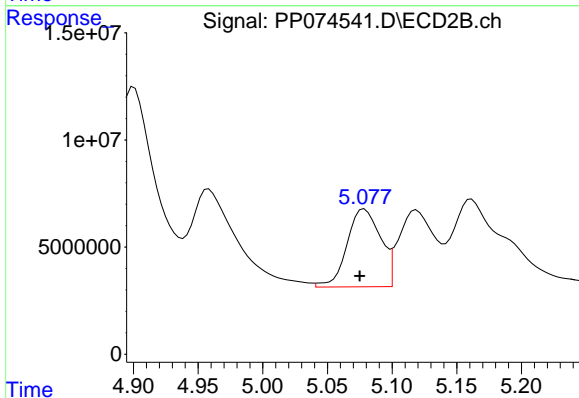
#5 AR-1016-3

R.T.: 5.895 min
 Delta R.T.: 0.008 min
 Response: 20449672
 Conc: 455.31 ng/ml

Instrument :
 ECD_P
 ClientSampleId :
 AR1660CCC500

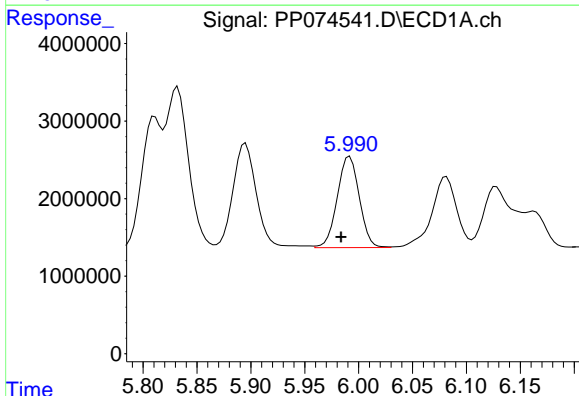
Manual Integrations
 APPROVED

Reviewed By :Yogesh Patel 08/22/2025
 Supervised By :mohammad ahmed 08/25/2025



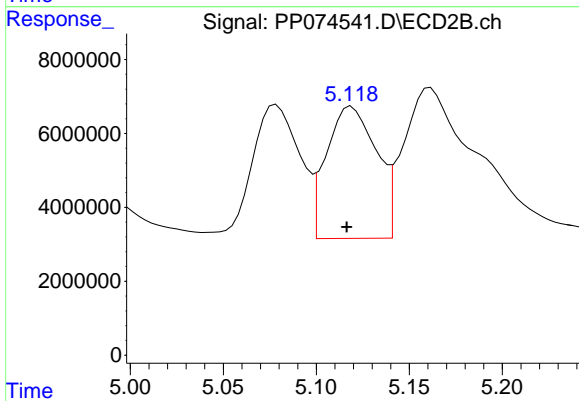
#5 AR-1016-3

R.T.: 5.079 min
 Delta R.T.: 0.004 min
 Response: 65416288
 Conc: 474.36 ng/ml



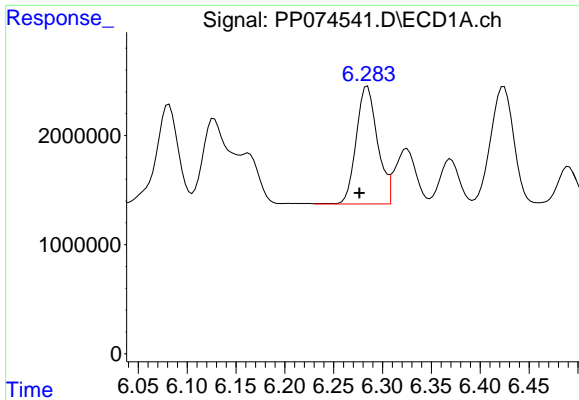
#6 AR-1016-4

R.T.: 5.992 min
 Delta R.T.: 0.008 min
 Response: 16747736
 Conc: 476.03 ng/ml



#6 AR-1016-4

R.T.: 5.119 min
 Delta R.T.: 0.003 min
 Response: 66844597
 Conc: 478.13 ng/ml



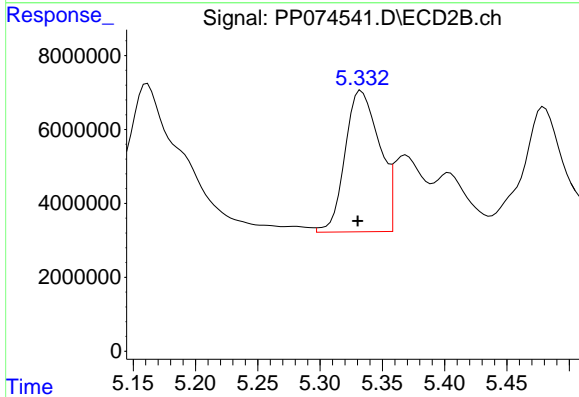
#7 AR-1016-5

R.T.: 6.285 min
 Delta R.T.: 0.008 min
 Response: 16380268
 Conc: 493.59 ng/ml

Instrument :
 ECD_P
 ClientSampleId :
 AR1660CCC500

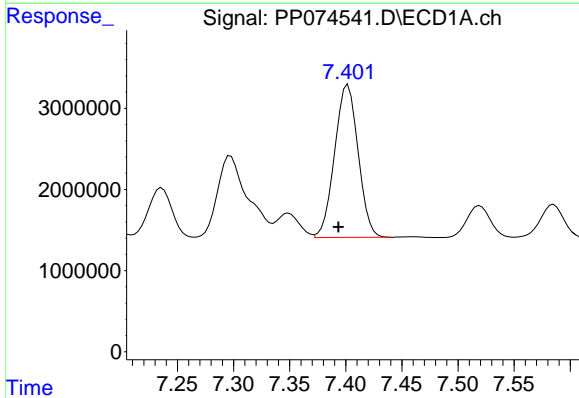
Manual Integrations
 APPROVED

Reviewed By :Yogesh Patel 08/22/2025
 Supervised By :mohammad ahmed 08/25/2025



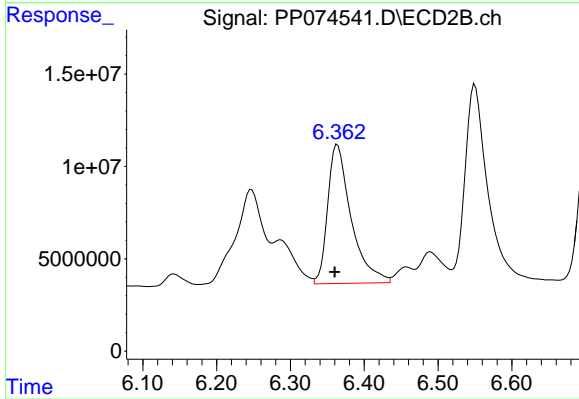
#7 AR-1016-5

R.T.: 5.333 min
 Delta R.T.: 0.003 min
 Response: 73242226
 Conc: 441.00 ng/ml



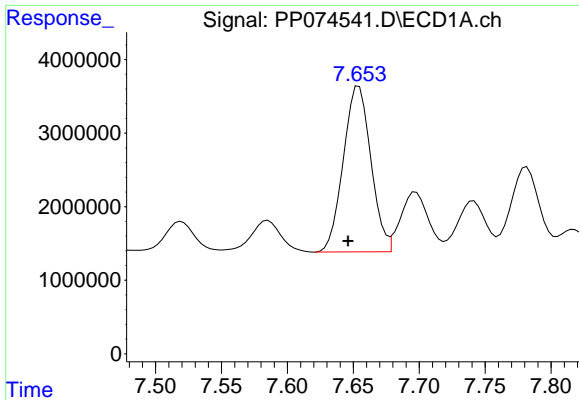
#31 AR-1260-1

R.T.: 7.402 min
 Delta R.T.: 0.009 min
 Response: 27423964
 Conc: 474.38 ng/ml



#31 AR-1260-1

R.T.: 6.364 min
 Delta R.T.: 0.004 min
 Response: 166282172
 Conc: 443.16 ng/ml



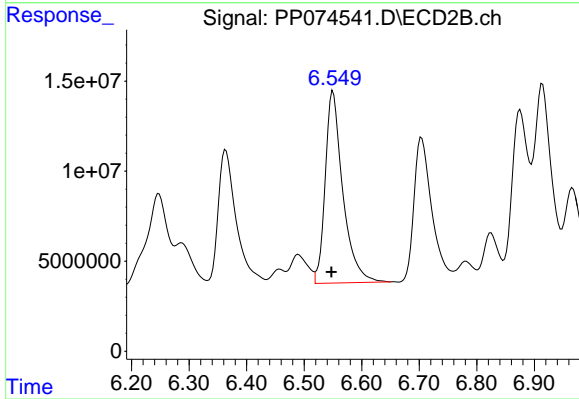
#32 AR-1260-2

R.T.: 7.654 min
 Delta R.T.: 0.008 min
 Response: 32792833
 Conc: 475.83 ng/ml

Instrument :
 ECD_P
 ClientSampleId :
 AR1660CCC500

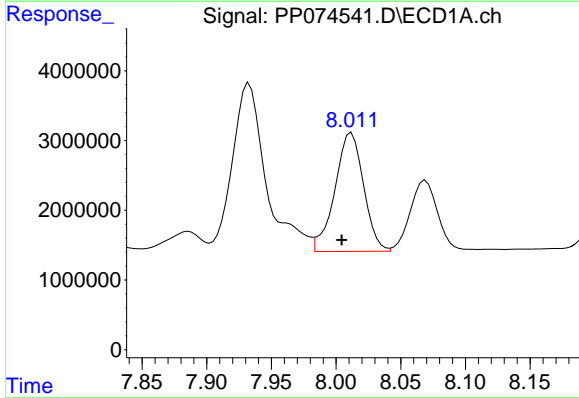
Manual Integrations
 APPROVED

Reviewed By :Yogesh Patel 08/22/2025
 Supervised By :mohammad ahmed 08/25/2025



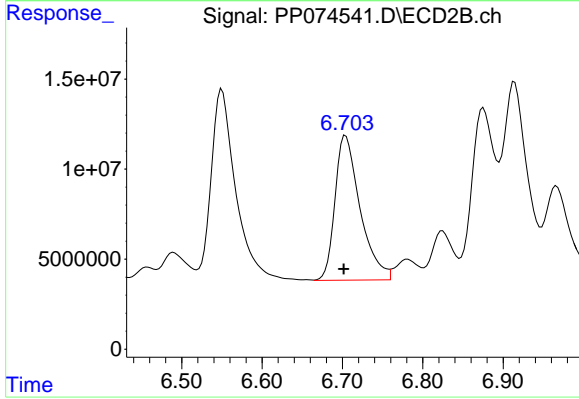
#32 AR-1260-2

R.T.: 6.550 min
 Delta R.T.: 0.003 min
 Response: 227093527
 Conc: 429.44 ng/ml



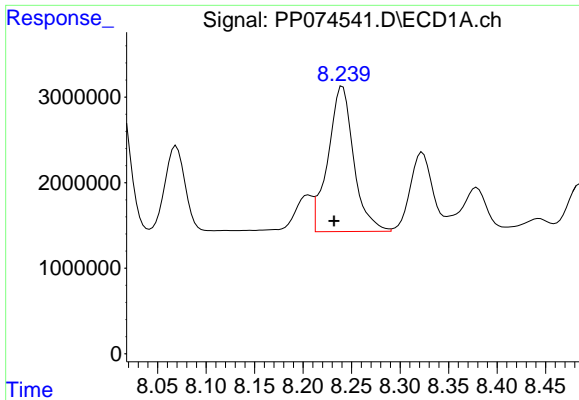
#33 AR-1260-3

R.T.: 8.012 min
 Delta R.T.: 0.008 min
 Response: 26269866
 Conc: 506.31 ng/ml



#33 AR-1260-3

R.T.: 6.702 min
 Delta R.T.: 0.000 min
 Response: 174942754
 Conc: 404.02 ng/ml m



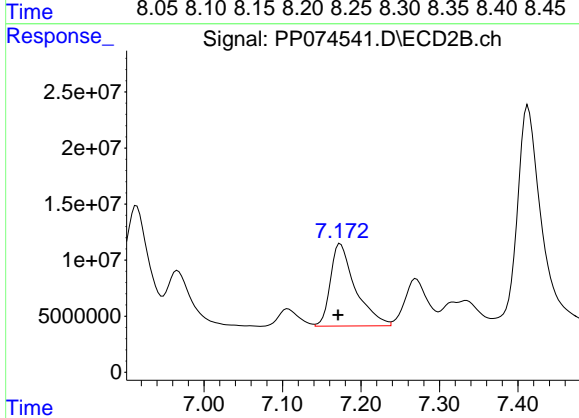
#34 AR-1260-4

R.T.: 8.241 min
 Delta R.T.: 0.009 min
 Response: 31316664
 Conc: 490.91 ng/ml

Instrument :
 ECD_P
 ClientSampleId :
 AR1660CCC500

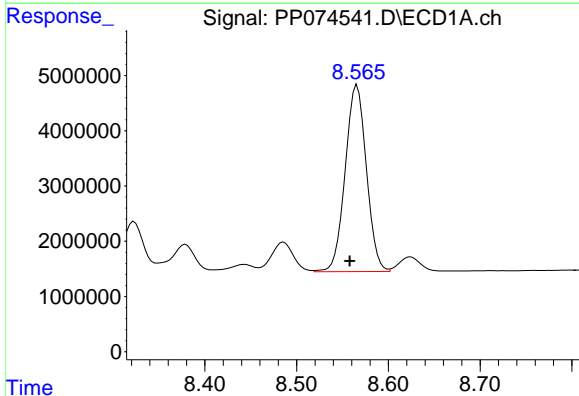
Manual Integrations
 APPROVED

Reviewed By :Yogesh Patel 08/22/2025
 Supervised By :mohammad ahmed 08/25/2025



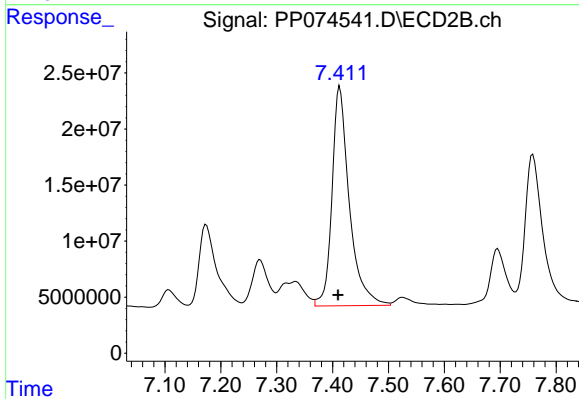
#34 AR-1260-4

R.T.: 7.174 min
 Delta R.T.: 0.003 min
 Response: 162264646
 Conc: 425.36 ng/ml



#35 AR-1260-5

R.T.: 8.566 min
 Delta R.T.: 0.008 min
 Response: 54182101
 Conc: 477.75 ng/ml



#35 AR-1260-5

R.T.: 7.413 min
 Delta R.T.: 0.003 min
 Response: 421425387
 Conc: 419.55 ng/ml