

Data Path : Z:\pestpcbsrv\HPCHEM1\ECD_P\Data\PP082125\
 Data File : PP074542.D
 Signal(s) : Signal #1: ECD1A.ch Signal #2: ECD2B.ch
 Acq On : 21 Aug 2025 15:23
 Operator : YP\AJ
 Sample : AR1242CCC500
 Misc :
 ALS Vial : 4 Sample Multiplier: 1

Instrument :
 ECD_P
ClientSampleId :
 AR1242CCC500

Manual Integrations
APPROVED
 Reviewed By :Yogesh Patel 08/22/2025
 Supervised By :mohammad ahmed 08/25/2025

Integration File signal 1: autoint1.e
 Integration File signal 2: autoint2.e
 Quant Time: Aug 22 00:22:50 2025
 Quant Method : Z:\pestpcbsrv\HPCHEM1\ECD_P\methods\PP081925.M
 Quant Title : GC EXTRACTABLES
 QLast Update : Wed Aug 20 06:20:44 2025
 Response via : Initial Calibration
 Integrator: ChemStation

Volume Inj. : 2 µl
 Signal #1 Phase : ZB-MR1 Signal #2 Phase: ZB-MR2
 Signal #1 Info : 30Mx0.32mmx 0.50µ Signal #2 Info : 30M x 0.32mm x 0.25µm

| Compound | RT#1 | RT#2 | Resp#1 | Resp#2 | ng/ml | ng/ml |
|-----------------------------|--------|-------|----------|----------|---------|----------|
| ----- | | | | | | |
| System Monitoring Compounds | | | | | | |
| 1) SA Tetrachlo... | 4.659 | 3.801 | 57913204 | 239.4E6 | 47.327 | 49.506 |
| 2) SA Decachlor... | 10.438 | 8.816 | 49470079 | 342.0E6 | 50.096 | 45.604 |
| Target Compounds | | | | | | |
| 16) L4 AR-1242-1 | 5.810 | 4.901 | 18427904 | 211.3E6 | 481.458 | 500.977 |
| 17) L4 AR-1242-2 | 5.832 | 4.959 | 26548257 | 101.2E6 | 470.031 | 505.312 |
| 18) L4 AR-1242-3 | 5.895 | 5.079 | 17755799 | 56078690 | 437.304 | 474.045 |
| 19) L4 AR-1242-4 | 5.992 | 5.161 | 14719296 | 70755414 | 463.719 | 413.389m |
| 20) L4 AR-1242-5 | 6.721 | 5.682 | 16385860 | 89005326 | 454.272 | 480.683 |
| ----- | | | | | | |

(f)=RT Delta > 1/2 Window (#)=Amounts differ by > 25% (m)=manual int.

Data Path : Z:\pestpcbsrv\HPCHEM1\ECD_P\Data\PP082125\
 Data File : PP074542.D
 Signal(s) : Signal #1: ECD1A.ch Signal #2: ECD2B.ch
 Acq On : 21 Aug 2025 15:23
 Operator : YP\AJ
 Sample : AR1242CCC500
 Misc :
 ALS Vial : 4 Sample Multiplier: 1

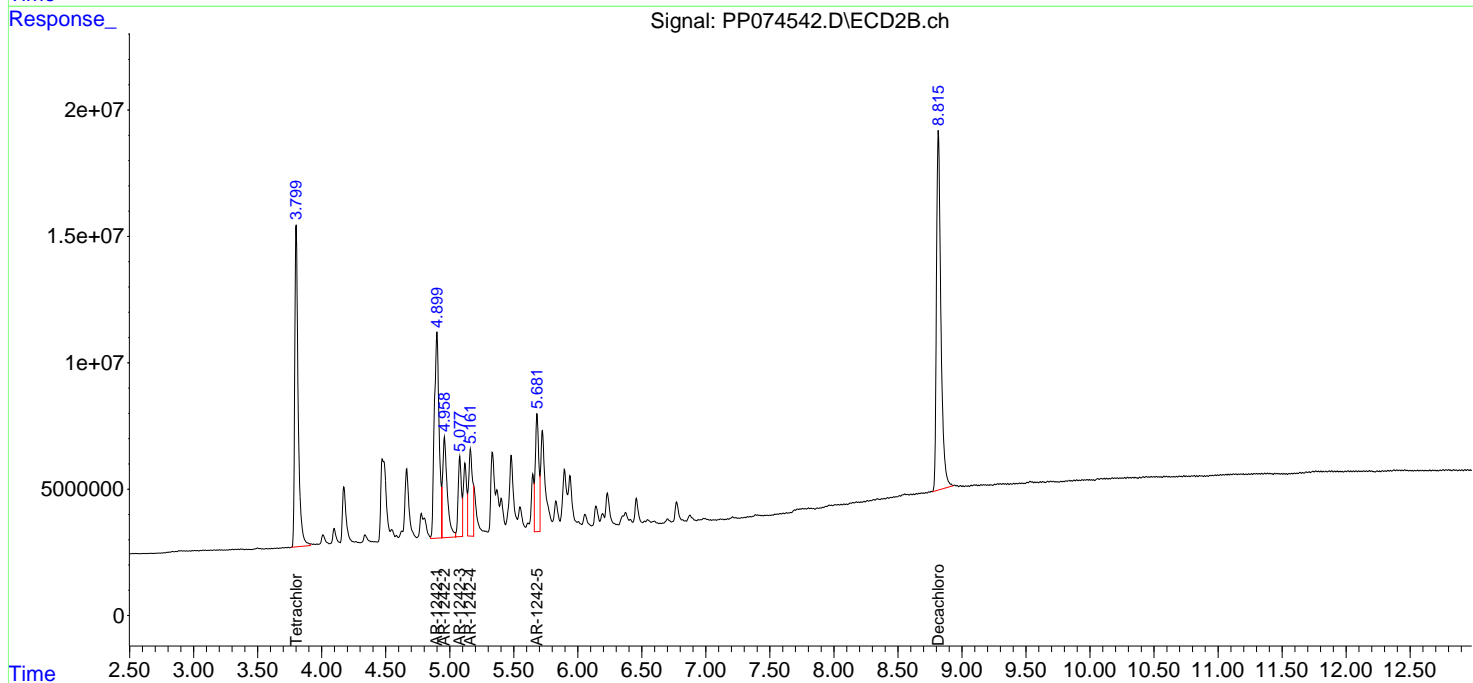
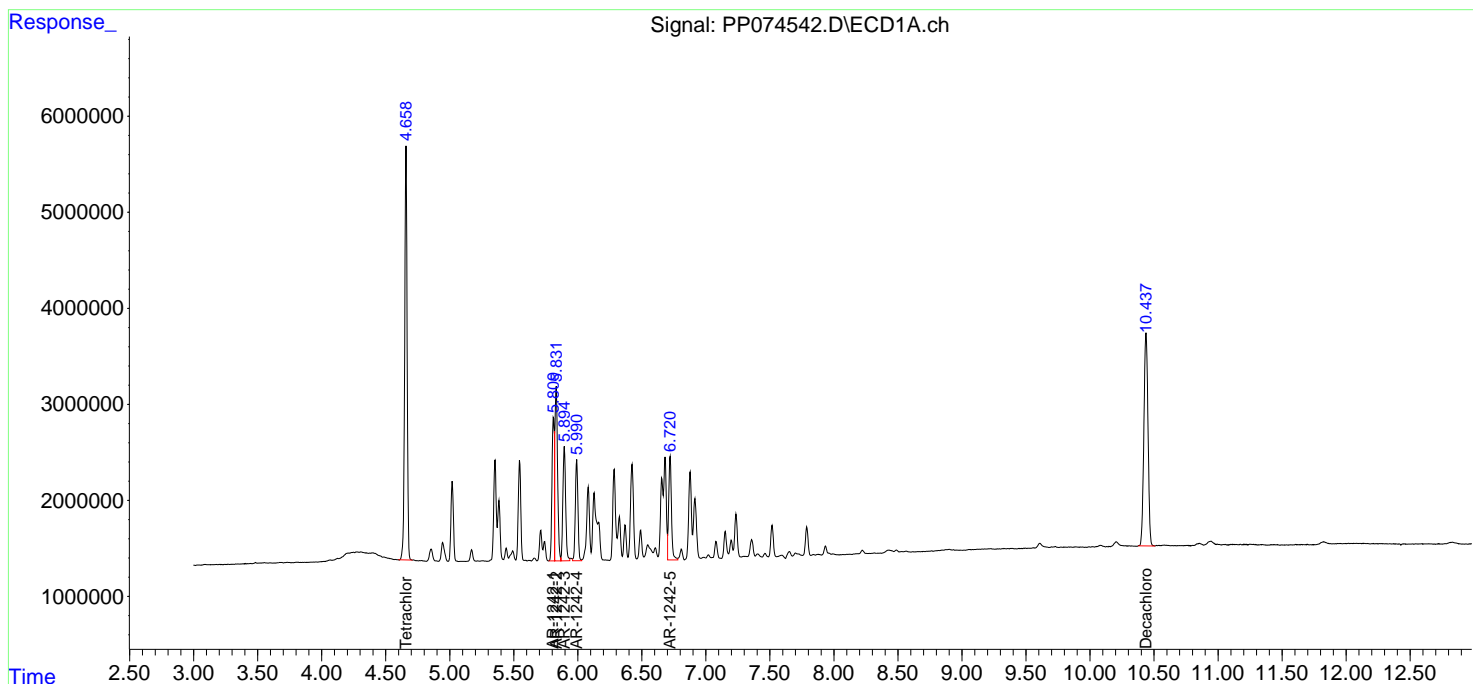
Instrument :
 ECD_P
ClientSampleId :
 AR1242CCC500

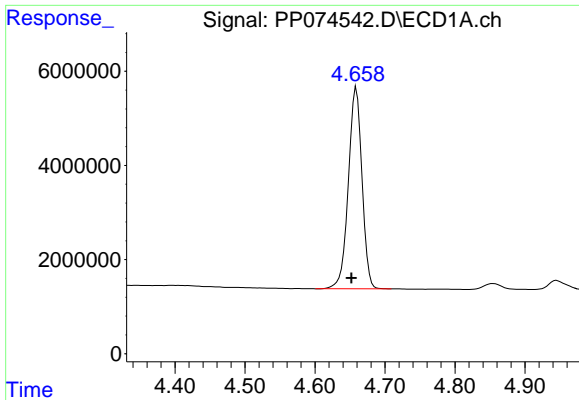
Manual Integrations
APPROVED

Reviewed By :Yogesh Patel 08/22/2025
 Supervised By :mohammad ahmed 08/25/2025

Integration File signal 1: autoint1.e
 Integration File signal 2: autoint2.e
 Quant Time: Aug 22 00:22:50 2025
 Quant Method : Z:\pestpcbsrv\HPCHEM1\ECD_P\methods\PP081925.M
 Quant Title : GC EXTRACTABLES
 QLast Update : Wed Aug 20 06:20:44 2025
 Response via : Initial Calibration
 Integrator: ChemStation

Volume Inj. : 2 µl
 Signal #1 Phase : ZB-MR1 Signal #2 Phase: ZB-MR2
 Signal #1 Info : 30Mx0.32mmx 0.50µ Signal #2 Info : 30M x 0.32mm x 0.25µm





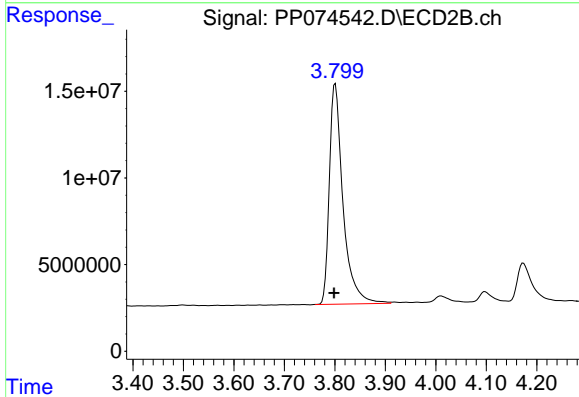
#1 Tetrachloro-m-xylene

R.T.: 4.659 min
 Delta R.T.: 0.007 min
 Response: 57913204
 Conc: 47.33 ng/ml

Instrument :
 ECD_P
 ClientSampleId :
 AR1242CCC500

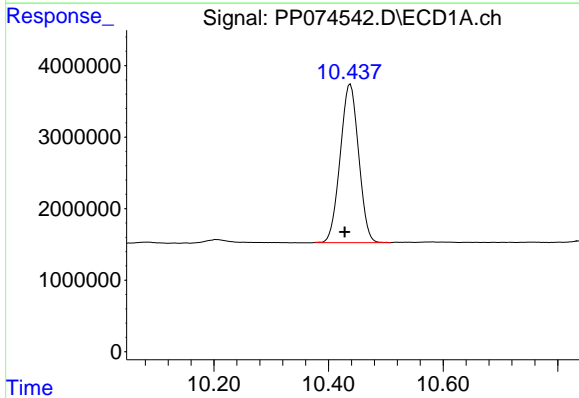
Manual Integrations
 APPROVED

Reviewed By :Yogesh Patel 08/22/2025
 Supervised By :mohammad ahmed 08/25/2025



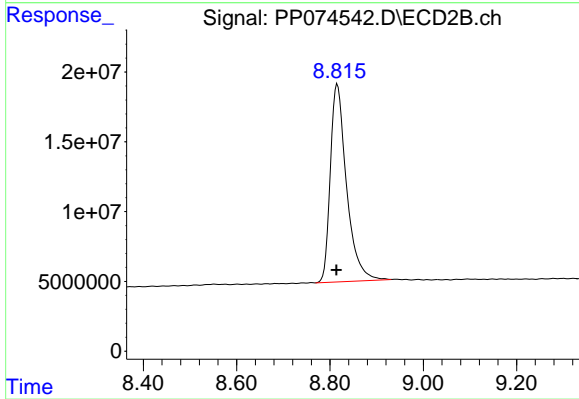
#1 Tetrachloro-m-xylene

R.T.: 3.801 min
 Delta R.T.: 0.002 min
 Response: 239381860
 Conc: 49.51 ng/ml



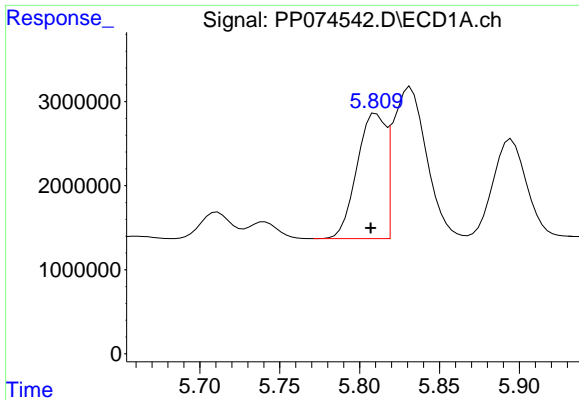
#2 Decachlorobiphenyl

R.T.: 10.438 min
 Delta R.T.: 0.010 min
 Response: 49470079
 Conc: 50.10 ng/ml



#2 Decachlorobiphenyl

R.T.: 8.816 min
 Delta R.T.: 0.002 min
 Response: 341995128
 Conc: 45.60 ng/ml



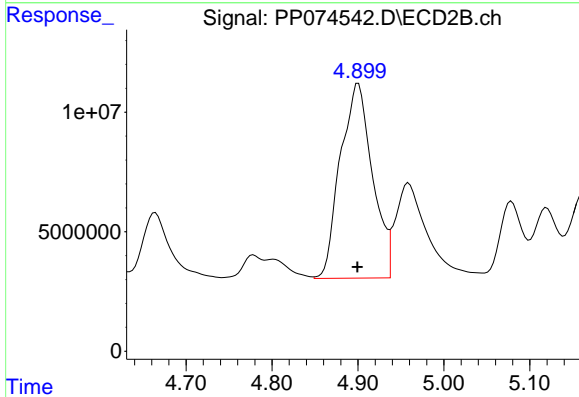
#16 AR-1242-1

R.T.: 5.810 min
 Delta R.T.: 0.003 min
 Response: 18427904
 Conc: 481.46 ng/ml

Instrument :
 ECD_P
 ClientSampleId :
 AR1242CCC500

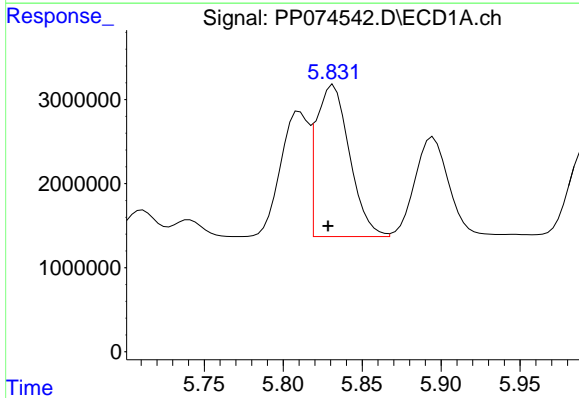
Manual Integrations
 APPROVED

Reviewed By :Yogesh Patel 08/22/2025
 Supervised By :mohammad ahmed 08/25/2025



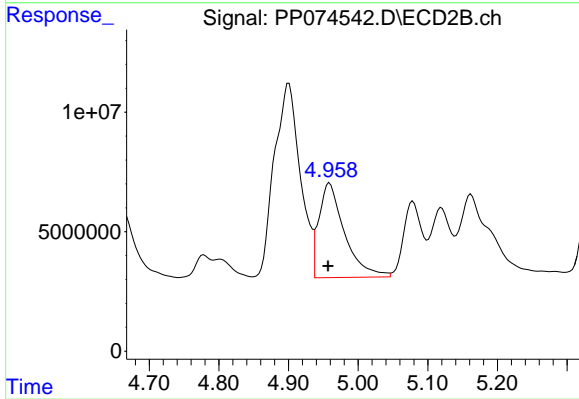
#16 AR-1242-1

R.T.: 4.901 min
 Delta R.T.: 0.000 min
 Response: 211288379
 Conc: 500.98 ng/ml



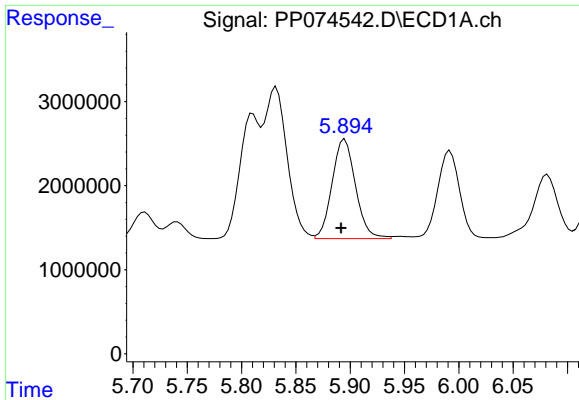
#17 AR-1242-2

R.T.: 5.832 min
 Delta R.T.: 0.003 min
 Response: 26548257
 Conc: 470.03 ng/ml



#17 AR-1242-2

R.T.: 4.959 min
 Delta R.T.: 0.002 min
 Response: 101205187
 Conc: 505.31 ng/ml



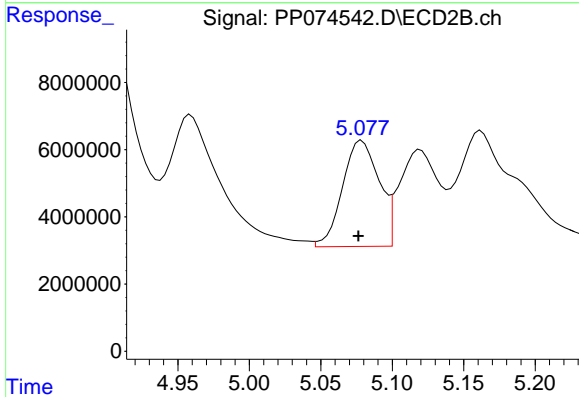
#18 AR-1242-3

R.T.: 5.895 min
 Delta R.T.: 0.003 min
 Response: 17755799
 Conc: 437.30 ng/ml

Instrument : ECD_P
 Client Sample Id : AR1242CCC500

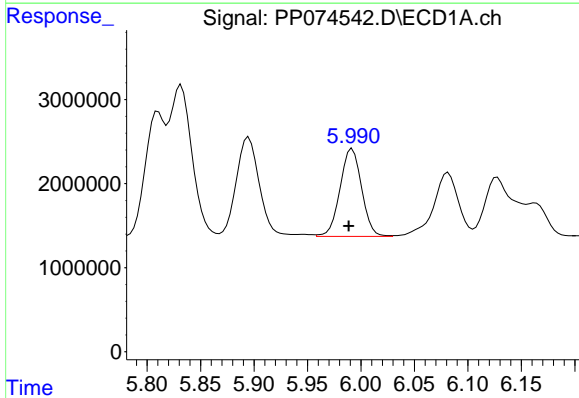
Manual Integrations
 APPROVED

Reviewed By :Yogesh Patel 08/22/2025
 Supervised By :mohammad ahmed 08/25/2025



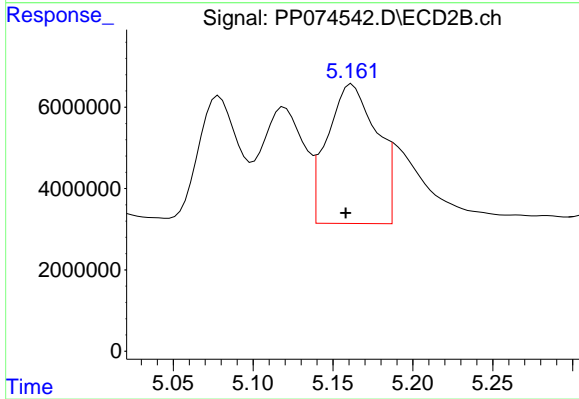
#18 AR-1242-3

R.T.: 5.079 min
 Delta R.T.: 0.002 min
 Response: 56078690
 Conc: 474.05 ng/ml



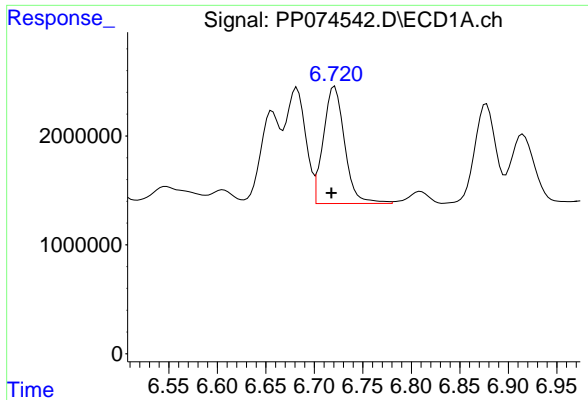
#19 AR-1242-4

R.T.: 5.992 min
 Delta R.T.: 0.003 min
 Response: 14719296
 Conc: 463.72 ng/ml



#19 AR-1242-4

R.T.: 5.161 min
 Delta R.T.: 0.003 min
 Response: 70755414
 Conc: 413.39 ng/ml m



#20 AR-1242-5

R.T.: 6.721 min
 Delta R.T.: 0.004 min
 Response: 16385860
 Conc: 454.27 ng/ml

Instrument :

ECD_P

ClientSampleId :

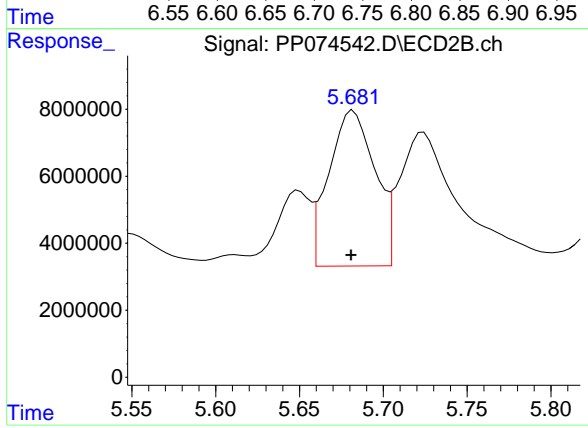
AR1242CCC500

Manual Integrations

APPROVED

Reviewed By :Yogesh Patel 08/22/2025

Supervised By :mohammad ahmed 08/25/2025



#20 AR-1242-5

R.T.: 5.682 min
 Delta R.T.: 0.001 min
 Response: 89005326
 Conc: 480.68 ng/ml