

Data Path : Z:\pestpcbsrv\HPCHEM1\ECD_P\Data\PP082125\
 Data File : PP074544.D
 Signal(s) : Signal #1: ECD1A.ch Signal #2: ECD2B.ch
 Acq On : 21 Aug 2025 15:56
 Operator : YP\AJ
 Sample : AR1254CCC500
 Misc :
 ALS Vial : 6 Sample Multiplier: 1

Instrument :
 ECD_P
ClientSampleId :
 AR1254CCC500

Manual Integrations
APPROVED
 Reviewed By :Yogesh Patel 08/22/2025
 Supervised By :mohammad ahmed 08/25/2025

Integration File signal 1: autoint1.e
 Integration File signal 2: autoint2.e
 Quant Time: Aug 22 00:23:19 2025
 Quant Method : Z:\pestpcbsrv\HPCHEM1\ECD_P\methods\PP081925.M
 Quant Title : GC EXTRACTABLES
 QLast Update : Wed Aug 20 06:20:44 2025
 Response via : Initial Calibration
 Integrator: ChemStation

Volume Inj. : 2 µl
 Signal #1 Phase : ZB-MR1 Signal #2 Phase: ZB-MR2
 Signal #1 Info : 30Mx0.32mmx 0.50µ Signal #2 Info : 30M x 0.32mm x 0.25µm

Compound	RT#1	RT#2	Resp#1	Resp#2	ng/ml	ng/ml

System Monitoring Compounds						
1) SA Tetrachlo...	4.659	3.801	59014932	241.3E6	48.227	49.903
2) SA Decachlor...	10.439	8.816	51536567	367.3E6	52.188	48.984
Target Compounds						
26) L6 AR-1254-1	6.658	5.684	27604364	228.5E6	473.737m	479.286
27) L6 AR-1254-2	6.876	5.831	39960293	175.1E6	489.613	497.160
28) L6 AR-1254-3	7.238	6.234	43353293	312.5E6	485.988	504.225
29) L6 AR-1254-4	7.519	6.460	31964757	222.2E6	484.949	474.219
30) L6 AR-1254-5	7.936	6.877	41066402	242.8E6	494.270	494.916

(f)=RT Delta > 1/2 Window (#)=Amounts differ by > 25% (m)=manual int.

Data Path : Z:\pestpcbsrv\HPCHEM1\ECD_P\Data\PP082125\
 Data File : PP074544.D
 Signal(s) : Signal #1: ECD1A.ch Signal #2: ECD2B.ch
 Acq On : 21 Aug 2025 15:56
 Operator : YP\AJ
 Sample : AR1254CCC500
 Misc :
 ALS Vial : 6 Sample Multiplier: 1

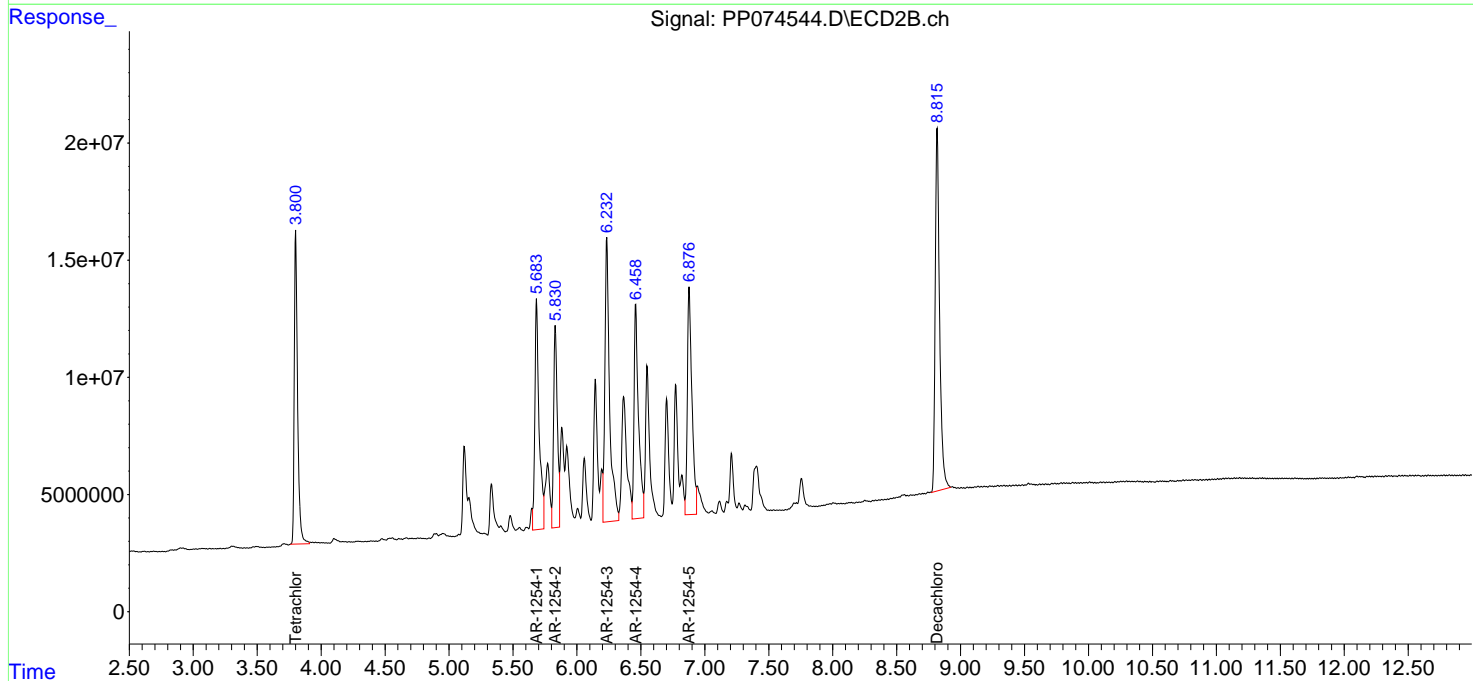
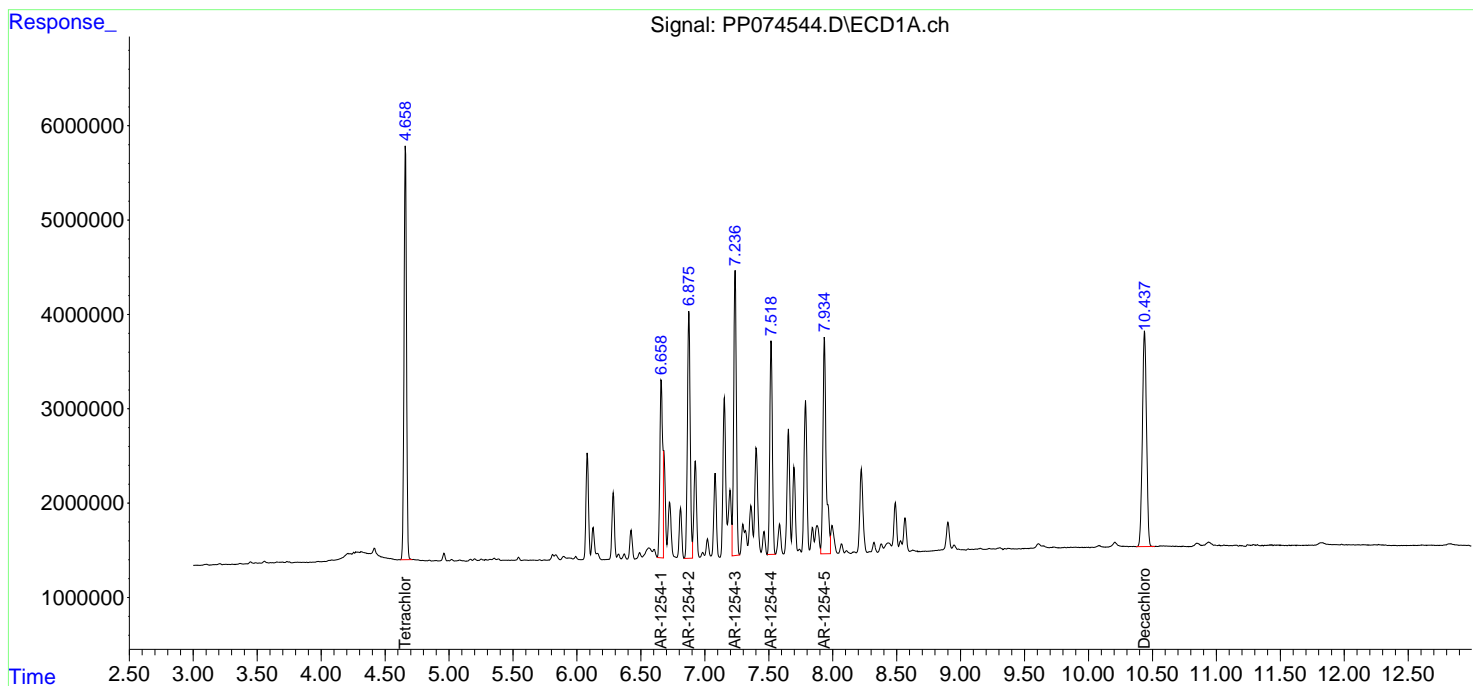
Instrument :
 ECD_P
 ClientSampleId :
 AR1254CCC500

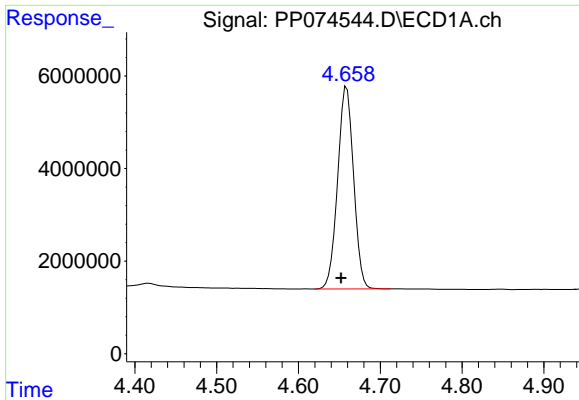
Manual Integrations
 APPROVED

Reviewed By :Yogesh Patel 08/22/2025
 Supervised By :mohammad ahmed 08/25/2025

Integration File signal 1: autoint1.e
 Integration File signal 2: autoint2.e
 Quant Time: Aug 22 00:23:19 2025
 Quant Method : Z:\pestpcbsrv\HPCHEM1\ECD_P\methods\PP081925.M
 Quant Title : GC EXTRACTABLES
 QLast Update : Wed Aug 20 06:20:44 2025
 Response via : Initial Calibration
 Integrator: ChemStation

Volume Inj. : 2 µl
 Signal #1 Phase : ZB-MR1 Signal #2 Phase: ZB-MR2
 Signal #1 Info : 30Mx0.32mmx 0.50µ Signal #2 Info : 30M x 0.32mm x 0.25µm



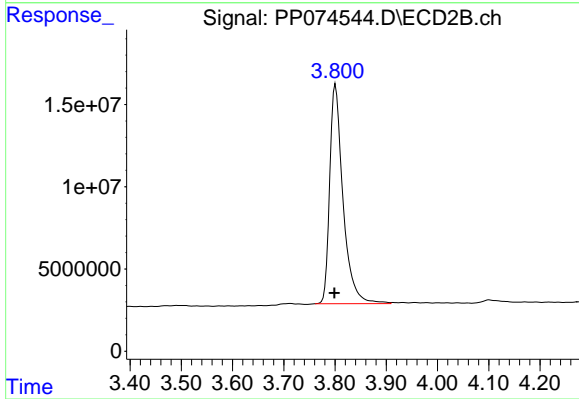


#1 Tetrachloro-m-xylene
 R.T.: 4.659 min
 Delta R.T.: 0.007 min
 Response: 59014932
 Conc: 48.23 ng/ml

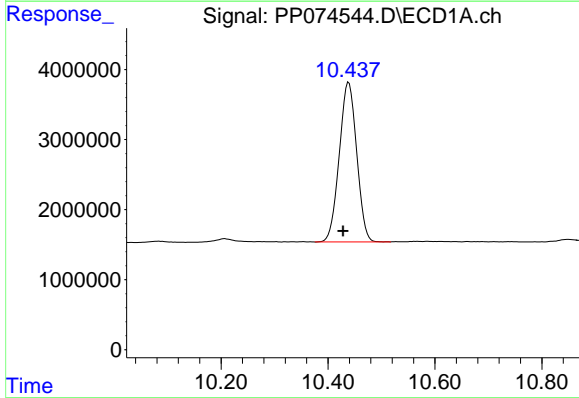
Instrument :
 ECD_P
 ClientSampleId :
 AR1254CCC500

Manual Integrations
 APPROVED

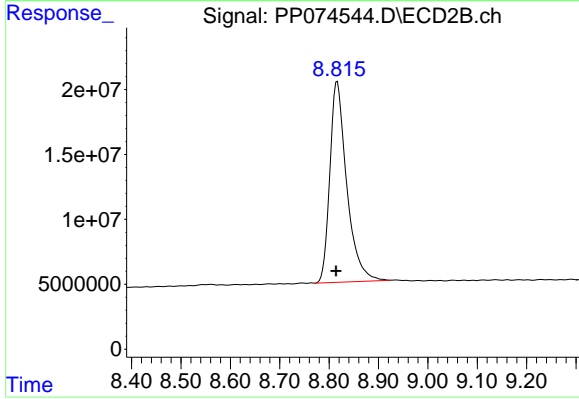
Reviewed By :Yogesh Patel 08/22/2025
 Supervised By :mohammad ahmed 08/25/2025



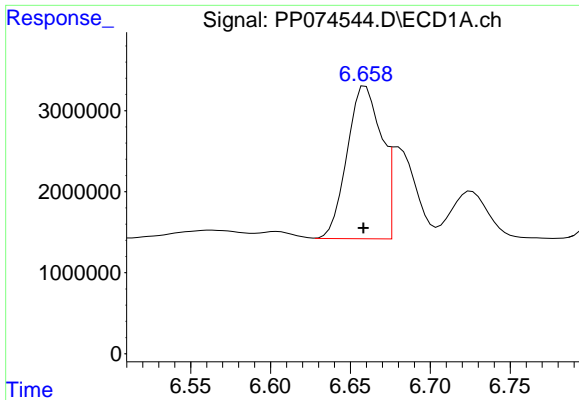
#1 Tetrachloro-m-xylene
 R.T.: 3.801 min
 Delta R.T.: 0.002 min
 Response: 241301155
 Conc: 49.90 ng/ml



#2 Decachlorobiphenyl
 R.T.: 10.439 min
 Delta R.T.: 0.011 min
 Response: 51536567
 Conc: 52.19 ng/ml



#2 Decachlorobiphenyl
 R.T.: 8.816 min
 Delta R.T.: 0.003 min
 Response: 367343029
 Conc: 48.98 ng/ml



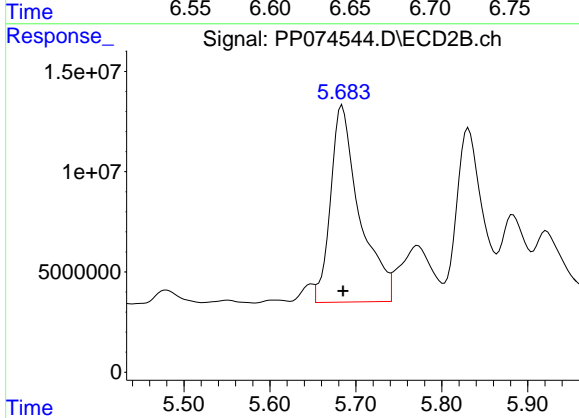
#26 AR-1254-1

R.T.: 6.658 min
 Delta R.T.: 0.000 min
 Response: 27604364
 Conc: 473.74 ng/ml

Instrument :
 ECD_P
 ClientSampleId :
 AR1254CCC500

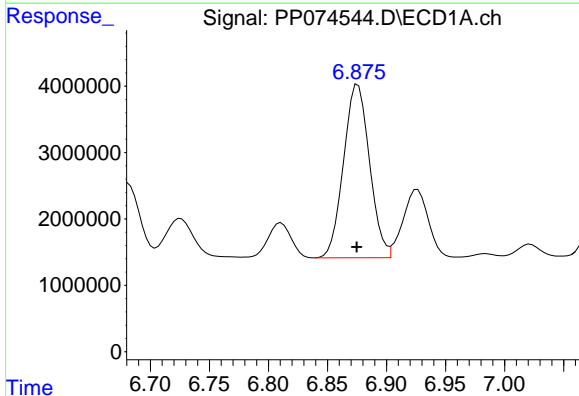
Manual Integrations
 APPROVED

Reviewed By :Yogesh Patel 08/22/2025
 Supervised By :mohammad ahmed 08/25/2025



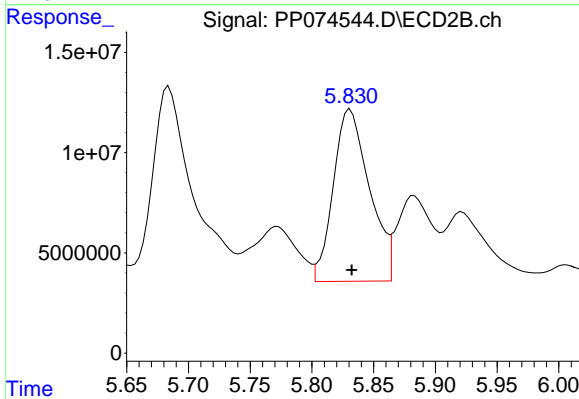
#26 AR-1254-1

R.T.: 5.684 min
 Delta R.T.: -0.001 min
 Response: 228480675
 Conc: 479.29 ng/ml



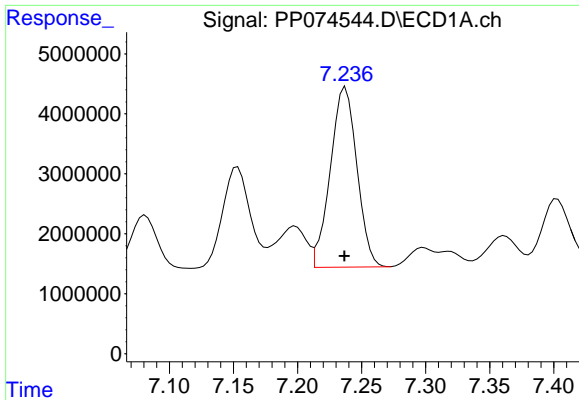
#27 AR-1254-2

R.T.: 6.876 min
 Delta R.T.: 0.000 min
 Response: 39960293
 Conc: 489.61 ng/ml



#27 AR-1254-2

R.T.: 5.831 min
 Delta R.T.: -0.001 min
 Response: 175066201
 Conc: 497.16 ng/ml



#28 AR-1254-3

R.T.: 7.238 min
 Delta R.T.: 0.000 min
 Response: 43353293
 Conc: 485.99 ng/ml

Instrument :

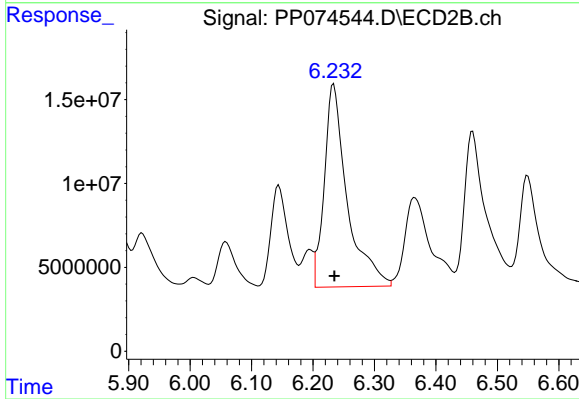
ECD_P

ClientSampleId :

AR1254CCC500

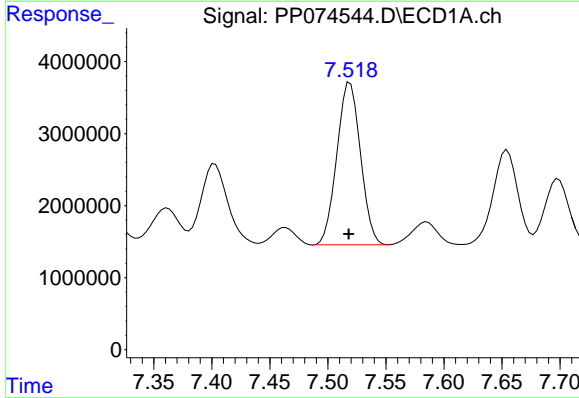
Manual Integrations
 APPROVED

Reviewed By :Yogesh Patel 08/22/2025
 Supervised By :mohammad ahmed 08/25/2025



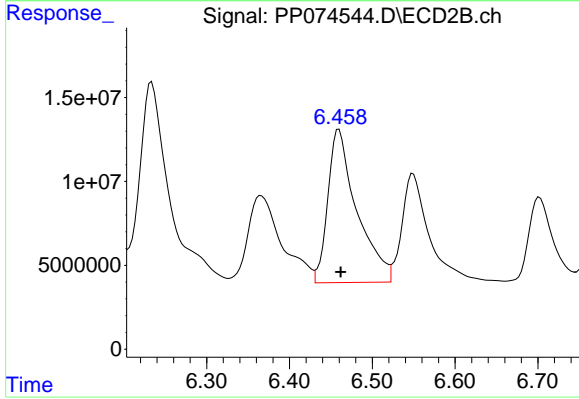
#28 AR-1254-3

R.T.: 6.234 min
 Delta R.T.: -0.001 min
 Response: 312521481
 Conc: 504.23 ng/ml



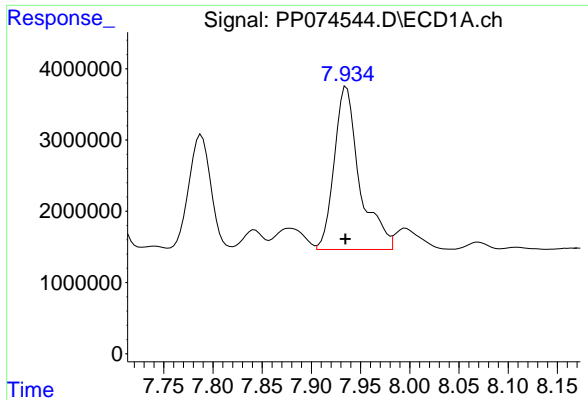
#29 AR-1254-4

R.T.: 7.519 min
 Delta R.T.: 0.001 min
 Response: 31964757
 Conc: 484.95 ng/ml



#29 AR-1254-4

R.T.: 6.460 min
 Delta R.T.: -0.002 min
 Response: 222231570
 Conc: 474.22 ng/ml



#30 AR-1254-5

R.T.: 7.936 min
 Delta R.T.: 0.000 min
 Response: 41066402
 Conc: 494.27 ng/ml

Instrument :

ECD_P

ClientSampleId :

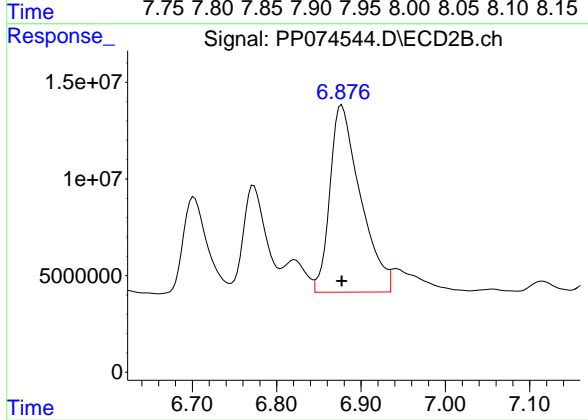
AR1254CCC500

Manual Integrations

APPROVED

Reviewed By :Yogesh Patel 08/22/2025

Supervised By :mohammad ahmed 08/25/2025



#30 AR-1254-5

R.T.: 6.877 min
 Delta R.T.: 0.000 min
 Response: 242756813
 Conc: 494.92 ng/ml