

Data Path : Z:\pestpcbsrv\HPCHEM1\ECD_P\Data\PP082125\
 Data File : PP074546.D
 Signal(s) : Signal #1: ECD1A.ch Signal #2: ECD2B.ch
 Acq On : 21 Aug 2025 16:28
 Operator : YP\AJ
 Sample : Q2922-11
 Misc :
 ALS Vial : 17 Sample Multiplier: 1

Instrument :
 ECD_P
ClientSampleId :
 K262-19A

Manual Integrations
APPROVED
 Reviewed By :Yogesh Patel 08/22/2025
 Supervised By :mohammad ahmed 08/25/2025

Integration File signal 1: autoint1.e
 Integration File signal 2: autoint2.e
 Quant Time: Aug 22 00:23:43 2025
 Quant Method : Z:\pestpcbsrv\HPCHEM1\ECD_P\methods\PP081925.M
 Quant Title : GC EXTRACTABLES
 QLast Update : Wed Aug 20 06:20:44 2025
 Response via : Initial Calibration
 Integrator: ChemStation

Volume Inj. : 2 µl
 Signal #1 Phase : ZB-MR1 Signal #2 Phase: ZB-MR2
 Signal #1 Info : 30Mx0.32mmx 0.50µ Signal #2 Info : 30M x 0.32mm x 0.25µm

Compound	RT#1	RT#2	Resp#1	Resp#2	ng/ml	ng/ml

System Monitoring Compounds						
1) SA Tetrachlo...	4.657	3.799	20840051	68766897	17.030	14.221
2) SA Decachlor...	10.437	8.809	14131371	139.6E6	14.310	18.615 #
Target Compounds						
26) L6 AR-1254-1	6.658	5.683	98775659	952.5E6	1695.154m	1998.004
27) L6 AR-1254-2	6.874	5.829	230.2E6	1098.9E6	2821.098	3120.652
28) L6 AR-1254-3	7.236	6.232	333.8E6	3213.1E6	3741.935	5184.093 #
29) L6 AR-1254-4	7.518	6.459	292.7E6	2739.8E6	4440.048	5846.385 #
30) L6 AR-1254-5	7.935	6.876	476.5E6	4686.6E6	5734.844	9554.690 #

(f)=RT Delta > 1/2 Window (#)=Amounts differ by > 25% (m)=manual int.

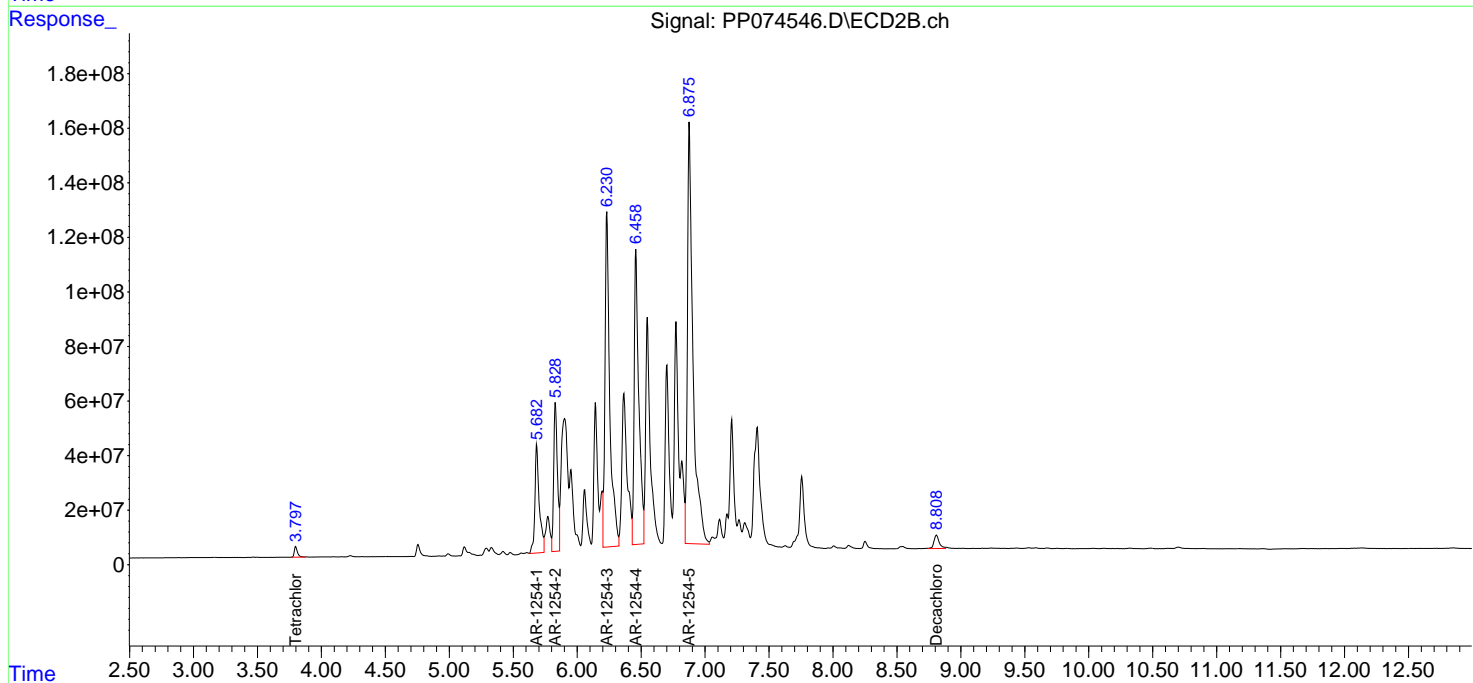
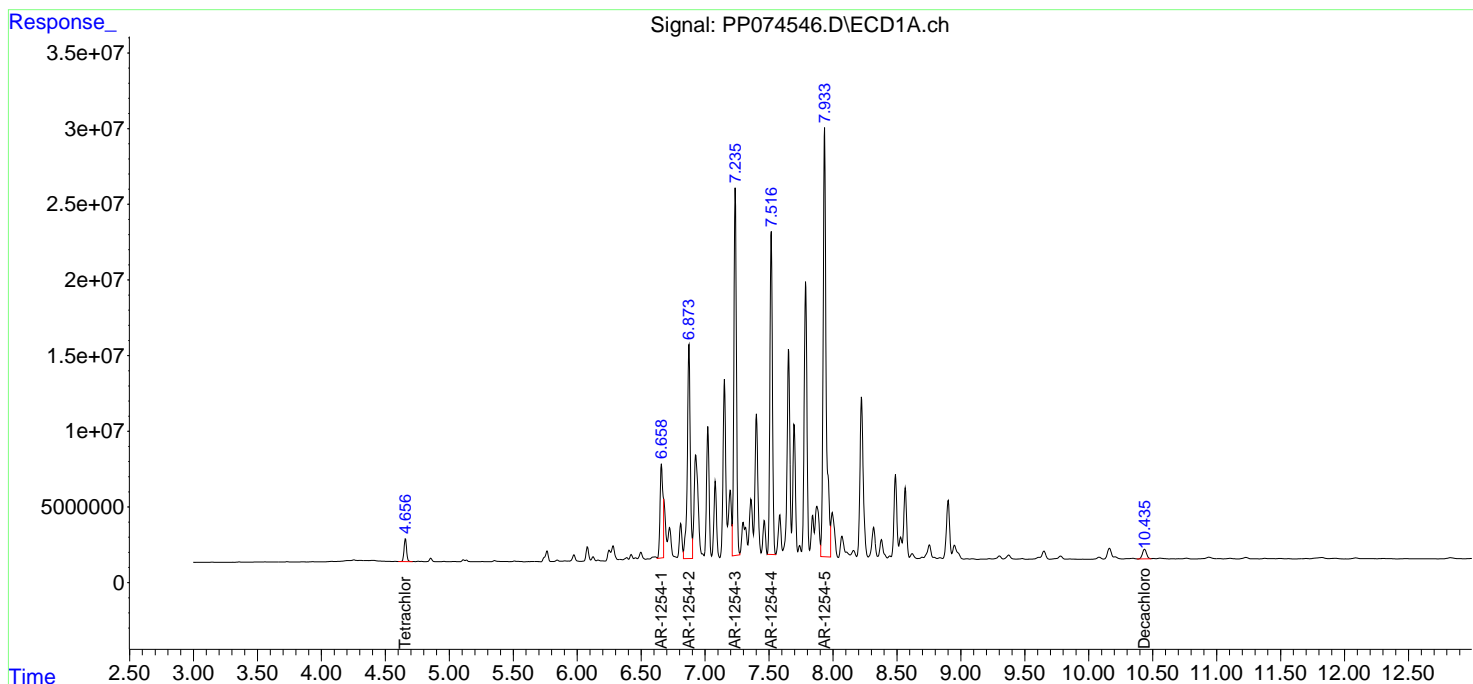
Data Path : Z:\pestpcbsrv\HPCHEM1\ECD_P\Data\PP082125\
 Data File : PP074546.D
 Signal(s) : Signal #1: ECD1A.ch Signal #2: ECD2B.ch
 Acq On : 21 Aug 2025 16:28
 Operator : YP\AJ
 Sample : Q2922-11
 Misc :
 ALS Vial : 17 Sample Multiplier: 1

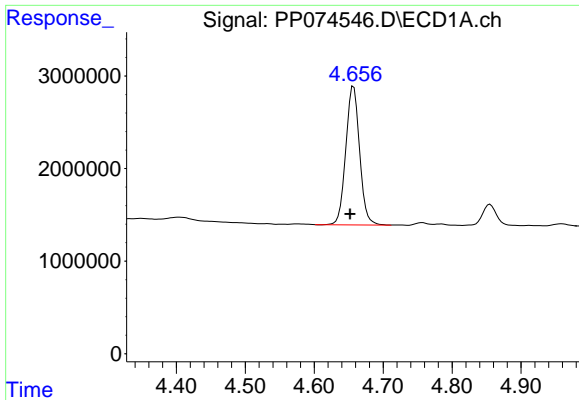
Instrument :
 ECD_P
ClientSampleId :
 K262-19A

Manual Integrations
APPROVED
 Reviewed By :Yogesh Patel 08/22/2025
 Supervised By :mohammad ahmed 08/25/2025

Integration File signal 1: autoint1.e
 Integration File signal 2: autoint2.e
 Quant Time: Aug 22 00:23:43 2025
 Quant Method : Z:\pestpcbsrv\HPCHEM1\ECD_P\methods\PP081925.M
 Quant Title : GC EXTRACTABLES
 QLast Update : Wed Aug 20 06:20:44 2025
 Response via : Initial Calibration
 Integrator: ChemStation

Volume Inj. : 2 µl
 Signal #1 Phase : ZB-MR1 Signal #2 Phase: ZB-MR2
 Signal #1 Info : 30Mx0.32mmx 0.50µ Signal #2 Info : 30M x 0.32mm x 0.25µm

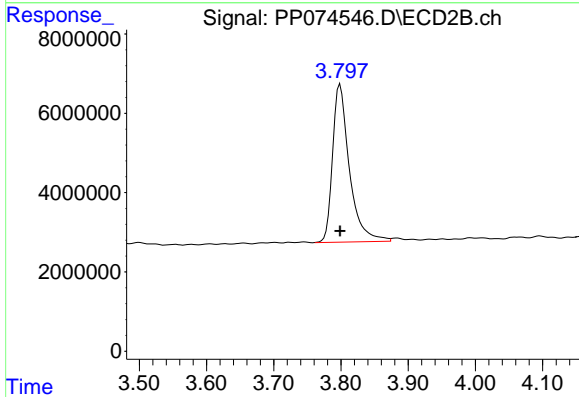




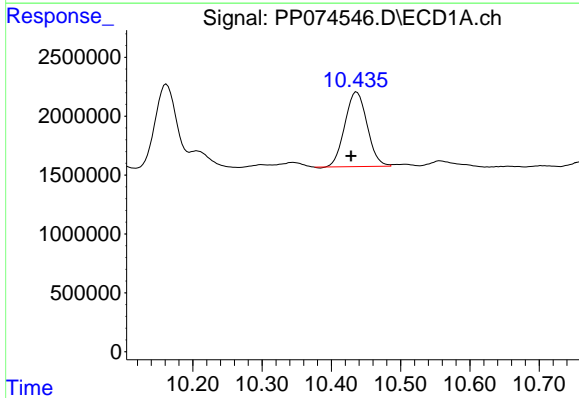
#1 Tetrachloro-m-xylene
 R.T.: 4.657 min
 Delta R.T.: 0.005 min
 Response: 20840051
 Conc: 17.03 ng/ml

Instrument : ECD_P
 ClientSampleId : K262-19A

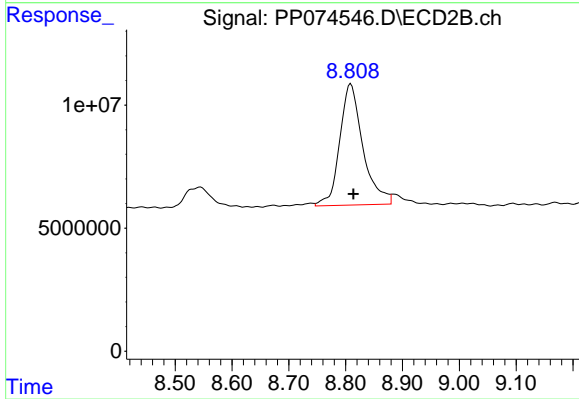
Manual Integrations
APPROVED
 Reviewed By :Yogesh Patel 08/22/2025
 Supervised By :mohammad ahmed 08/25/2025



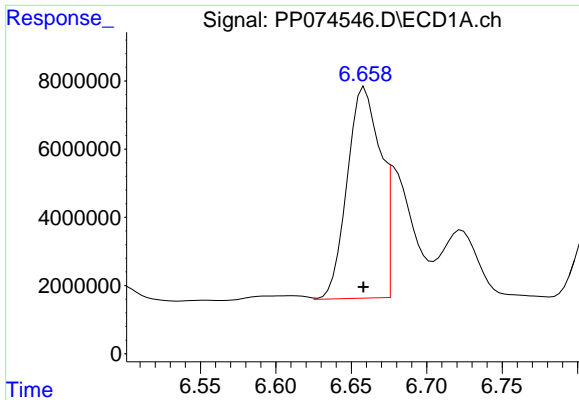
#1 Tetrachloro-m-xylene
 R.T.: 3.799 min
 Delta R.T.: 0.000 min
 Response: 68766897
 Conc: 14.22 ng/ml



#2 Decachlorobiphenyl
 R.T.: 10.437 min
 Delta R.T.: 0.008 min
 Response: 14131371
 Conc: 14.31 ng/ml



#2 Decachlorobiphenyl
 R.T.: 8.809 min
 Delta R.T.: -0.005 min
 Response: 139599176
 Conc: 18.62 ng/ml



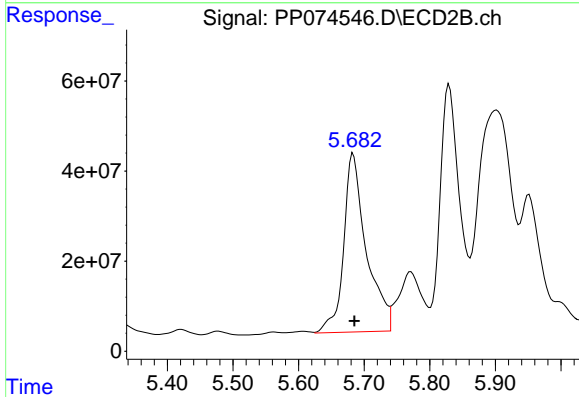
#26 AR-1254-1

R.T.: 6.658 min
 Delta R.T.: 0.000 min
 Response: 98775659
 Conc: 1695.15 ng/ml

Instrument :
 ECD_P
 Client Sample Id :
 K262-19A

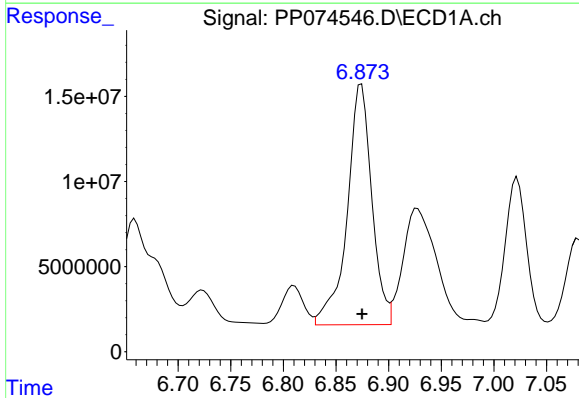
Manual Integrations
 APPROVED

Reviewed By :Yogesh Patel 08/22/2025
 Supervised By :mohammad ahmed 08/25/2025



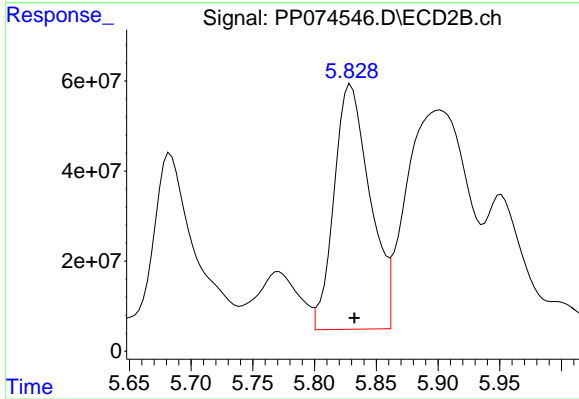
#26 AR-1254-1

R.T.: 5.683 min
 Delta R.T.: -0.002 min
 Response: 952469269
 Conc: 1998.00 ng/ml



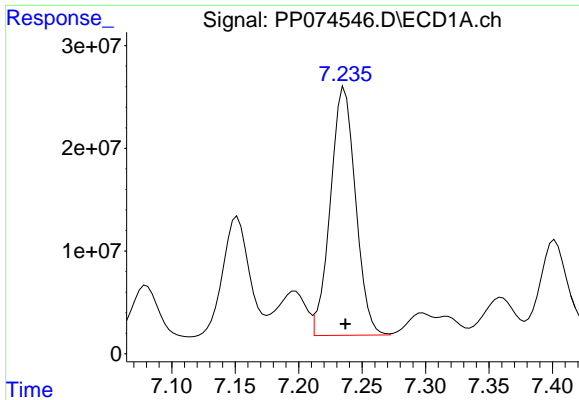
#27 AR-1254-2

R.T.: 6.874 min
 Delta R.T.: 0.000 min
 Response: 230246754
 Conc: 2821.10 ng/ml



#27 AR-1254-2

R.T.: 5.829 min
 Delta R.T.: -0.003 min
 Response: 1098883574
 Conc: 3120.65 ng/ml



#28 AR-1254-3

R.T.: 7.236 min
 Delta R.T.: 0.000 min
 Response: 333804745
 Conc: 3741.94 ng/ml

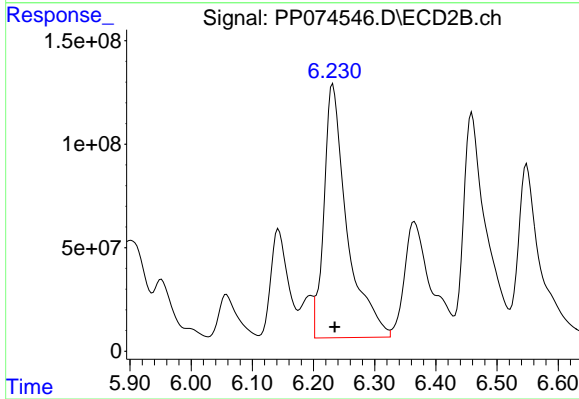
Instrument :

ECD_P

ClientSampleId :
 K262-19A

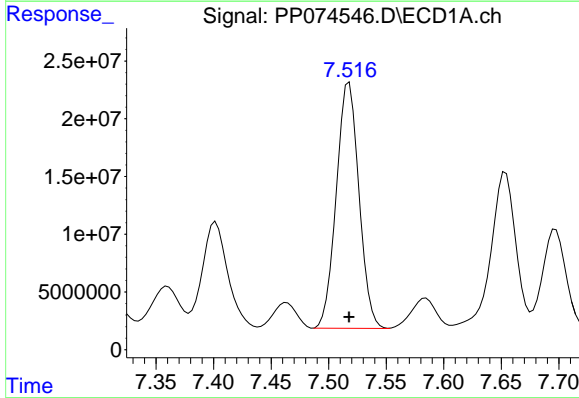
Manual Integrations
 APPROVED

Reviewed By :Yogesh Patel 08/22/2025
 Supervised By :mohammad ahmed 08/25/2025



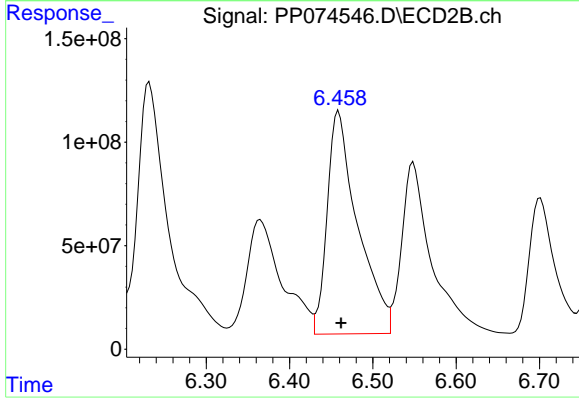
#28 AR-1254-3

R.T.: 6.232 min
 Delta R.T.: -0.003 min
 Response: 3213128878
 Conc: 5184.09 ng/ml



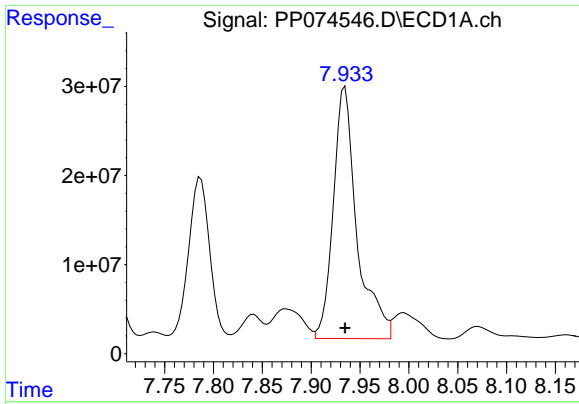
#29 AR-1254-4

R.T.: 7.518 min
 Delta R.T.: 0.000 min
 Response: 292659536
 Conc: 4440.05 ng/ml



#29 AR-1254-4

R.T.: 6.459 min
 Delta R.T.: -0.003 min
 Response: 2739770486
 Conc: 5846.38 ng/ml



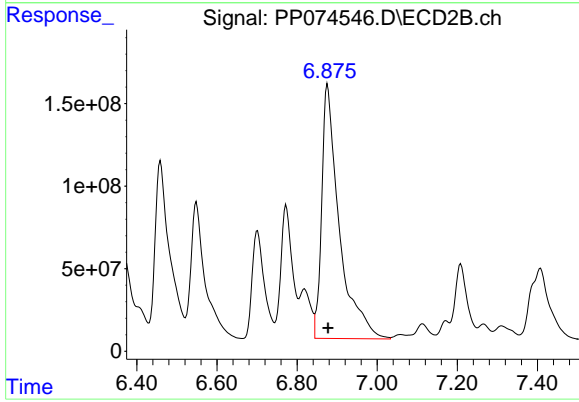
#30 AR-1254-5

R.T.: 7.935 min
 Delta R.T.: 0.000 min
 Response: 476479488
 Conc: 5734.84 ng/ml

Instrument :
 ECD_P
 ClientSampleId :
 K262-19A

Manual Integrations
 APPROVED

Reviewed By :Yogesh Patel 08/22/2025
 Supervised By :mohammad ahmed 08/25/2025



#30 AR-1254-5

R.T.: 6.876 min
 Delta R.T.: 0.000 min
 Response: 4686587230
 Conc: 9554.69 ng/ml