

Data Path : Z:\pestpcbsrv\HPCHEM1\ECD_P\Data\PP082125\
 Data File : PP074547.D
 Signal(s) : Signal #1: ECD1A.ch Signal #2: ECD2B.ch
 Acq On : 21 Aug 2025 16:45
 Operator : YP\AJ
 Sample : Q2922-14
 Misc :
 ALS Vial : 18 Sample Multiplier: 1

Instrument :
 ECD_P
ClientSampleId :
 K262-20A

Manual Integrations
APPROVED
 Reviewed By :Yogesh Patel 08/22/2025
 Supervised By :mohammad ahmed 08/25/2025

Integration File signal 1: autoint1.e
 Integration File signal 2: autoint2.e
 Quant Time: Aug 22 00:23:57 2025
 Quant Method : Z:\pestpcbsrv\HPCHEM1\ECD_P\methods\PP081925.M
 Quant Title : GC EXTRACTABLES
 QLast Update : Wed Aug 20 06:20:44 2025
 Response via : Initial Calibration
 Integrator: ChemStation

Volume Inj. : 2 µl
 Signal #1 Phase : ZB-MR1 Signal #2 Phase: ZB-MR2
 Signal #1 Info : 30Mx0.32mmx 0.50µ Signal #2 Info : 30M x 0.32mm x 0.25µm

Compound	RT#1	RT#2	Resp#1	Resp#2	ng/ml	ng/ml

System Monitoring Compounds						
1) SA Tetrachlo...	4.659	3.801	26284227	87661275	21.479	18.129
2) SA Decachlor...	10.440	8.809	20219985	252.9E6	20.476	33.728 #
Target Compounds						
26) L6 AR-1254-1	6.664	5.688	45582410	360.0E6	782.270	755.212
27) L6 AR-1254-2	6.877	5.831	69577511	250.6E6	852.498	711.669
28) L6 AR-1254-3	7.239	6.233	75886806	427.7E6	850.687	690.081m
29) L6 AR-1254-4	7.520	6.461	61774793	478.2E6	937.209	1020.323
30) L6 AR-1254-5	7.937	6.877	123.1E6	990.8E6	1481.277	2019.949 #

(f)=RT Delta > 1/2 Window (#)=Amounts differ by > 25% (m)=manual int.

Data Path : Z:\pestpcbsrv\HPCHEM1\ECD_P\Data\PP082125\
 Data File : PP074547.D
 Signal(s) : Signal #1: ECD1A.ch Signal #2: ECD2B.ch
 Acq On : 21 Aug 2025 16:45
 Operator : YP\AJ
 Sample : Q2922-14
 Misc :
 ALS Vial : 18 Sample Multiplier: 1

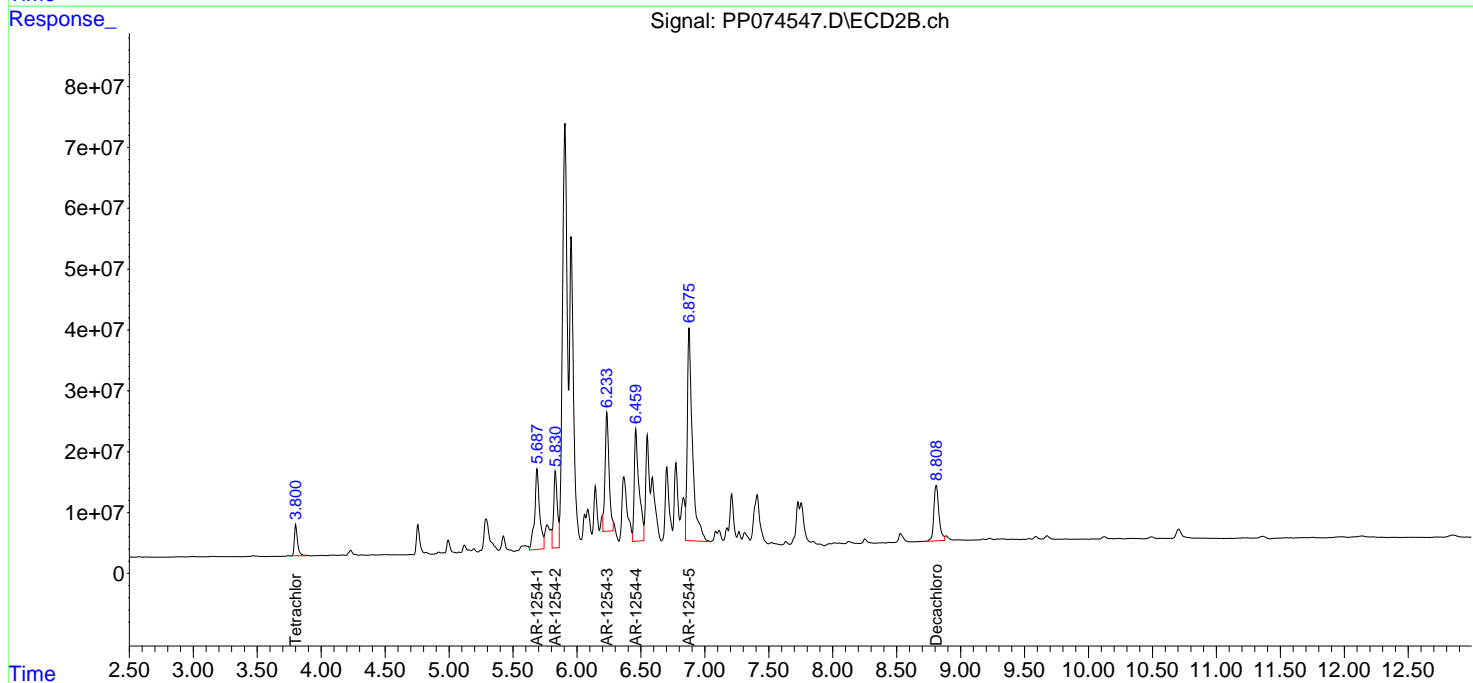
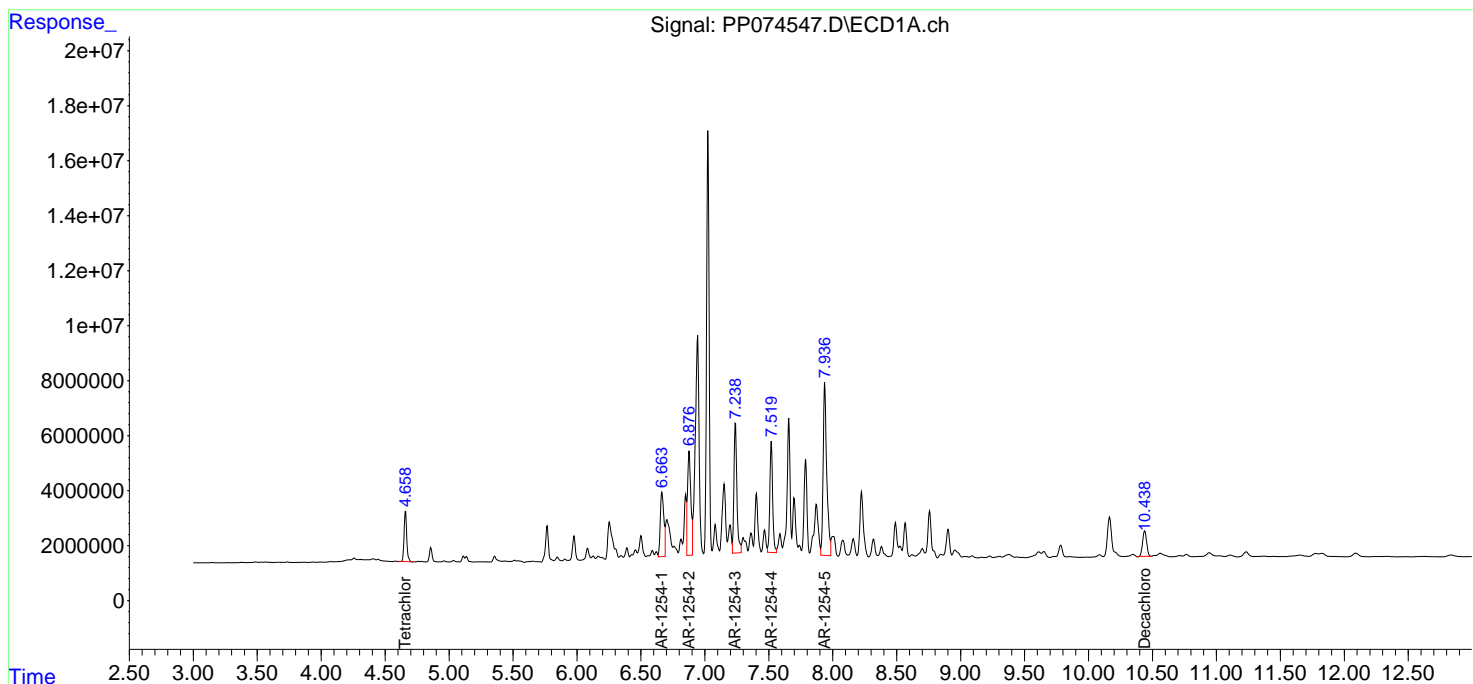
Instrument :
 ECD_P
ClientSampleId :
 K262-20A

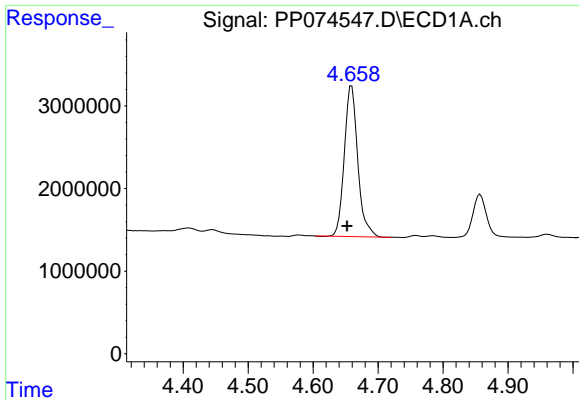
Manual Integrations
APPROVED

Reviewed By :Yogesh Patel 08/22/2025
 Supervised By :mohammad ahmed 08/25/2025

Integration File signal 1: autoint1.e
 Integration File signal 2: autoint2.e
 Quant Time: Aug 22 00:23:57 2025
 Quant Method : Z:\pestpcbsrv\HPCHEM1\ECD_P\methods\PP081925.M
 Quant Title : GC EXTRACTABLES
 QLast Update : Wed Aug 20 06:20:44 2025
 Response via : Initial Calibration
 Integrator: ChemStation

Volume Inj. : 2 µl
 Signal #1 Phase : ZB-MR1 Signal #2 Phase: ZB-MR2
 Signal #1 Info : 30Mx0.32mmx 0.50µ Signal #2 Info : 30M x 0.32mm x 0.25µm

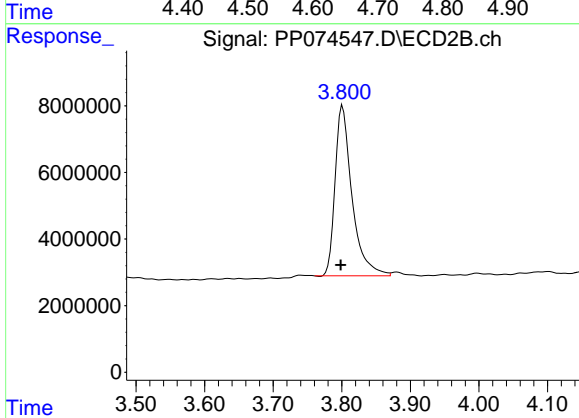




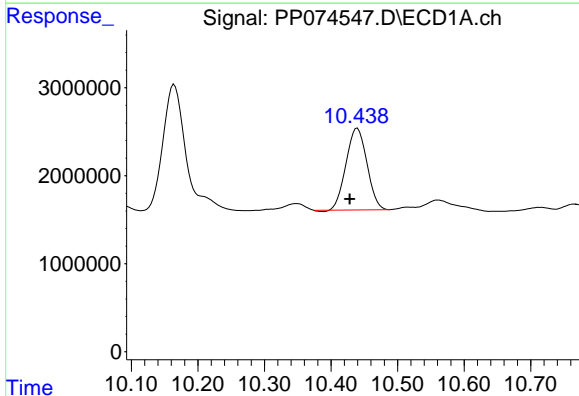
#1 Tetrachloro-m-xylene
 R.T.: 4.659 min
 Delta R.T.: 0.007 min
 Response: 26284227
 Conc: 21.48 ng/ml

Instrument : ECD_P
 ClientSampleId : K262-20A

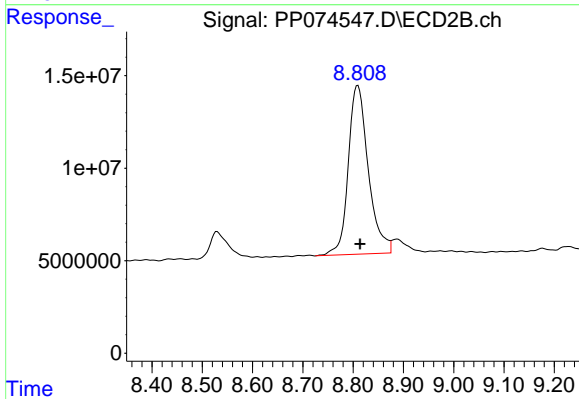
Manual Integrations
APPROVED
 Reviewed By :Yogesh Patel 08/22/2025
 Supervised By :mohammad ahmed 08/25/2025



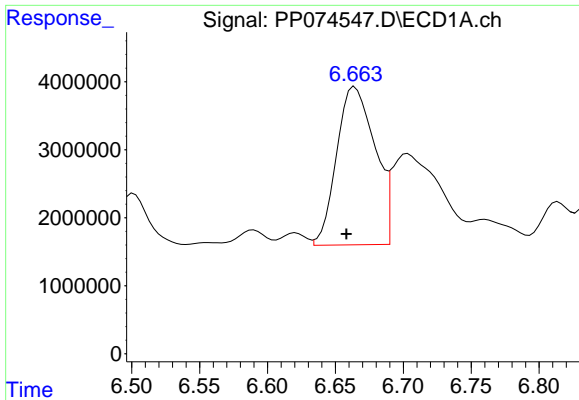
#1 Tetrachloro-m-xylene
 R.T.: 3.801 min
 Delta R.T.: 0.003 min
 Response: 87661275
 Conc: 18.13 ng/ml



#2 Decachlorobiphenyl
 R.T.: 10.440 min
 Delta R.T.: 0.011 min
 Response: 20219985
 Conc: 20.48 ng/ml



#2 Decachlorobiphenyl
 R.T.: 8.809 min
 Delta R.T.: -0.004 min
 Response: 252931534
 Conc: 33.73 ng/ml



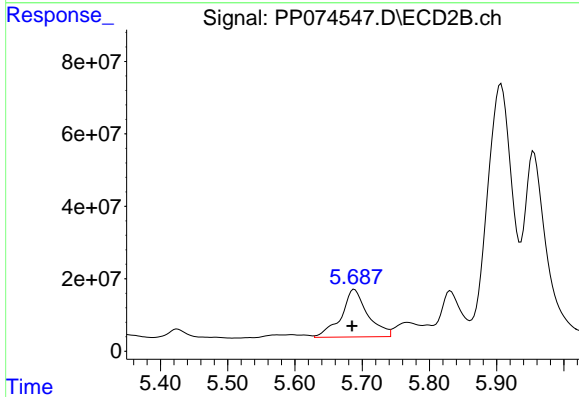
#26 AR-1254-1

R.T.: 6.664 min
 Delta R.T.: 0.006 min
 Response: 45582410
 Conc: 782.27 ng/ml

Instrument :
 ECD_P
 ClientSampleId :
 K262-20A

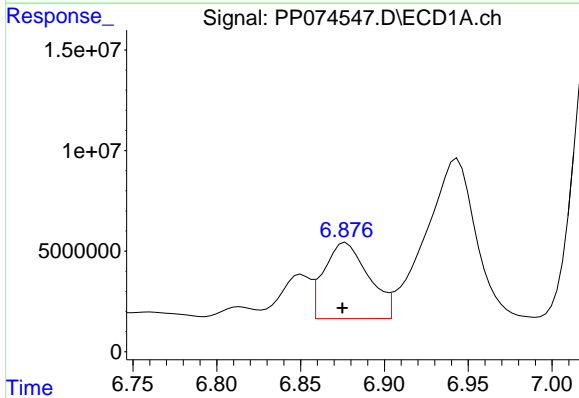
Manual Integrations
 APPROVED

Reviewed By :Yogesh Patel 08/22/2025
 Supervised By :mohammad ahmed 08/25/2025



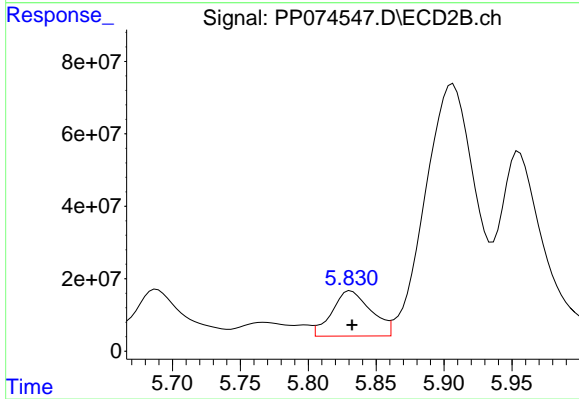
#26 AR-1254-1

R.T.: 5.688 min
 Delta R.T.: 0.003 min
 Response: 360017295
 Conc: 755.21 ng/ml



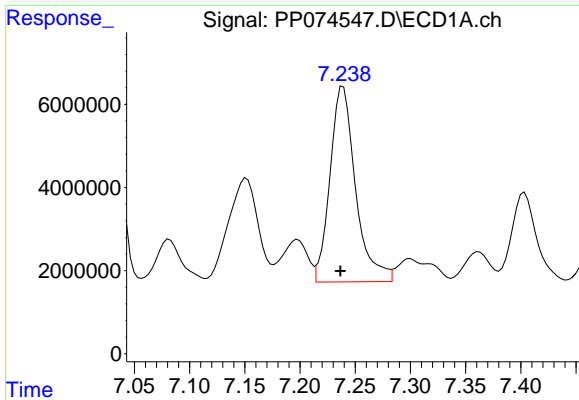
#27 AR-1254-2

R.T.: 6.877 min
 Delta R.T.: 0.002 min
 Response: 69577511
 Conc: 852.50 ng/ml



#27 AR-1254-2

R.T.: 5.831 min
 Delta R.T.: 0.000 min
 Response: 250601976
 Conc: 711.67 ng/ml



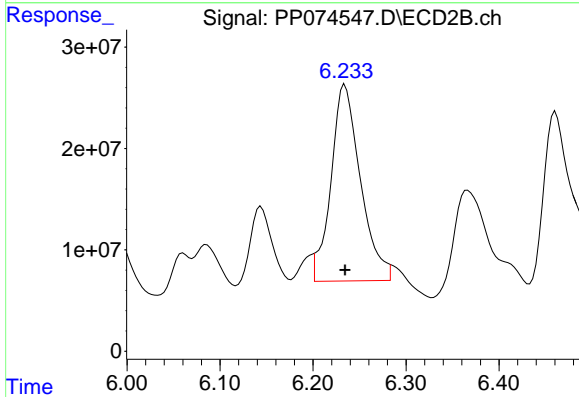
#28 AR-1254-3

R.T.: 7.239 min
 Delta R.T.: 0.002 min
 Response: 75886806
 Conc: 850.69 ng/ml

Instrument :
 ECD_P
 ClientSampleId :
 K262-20A

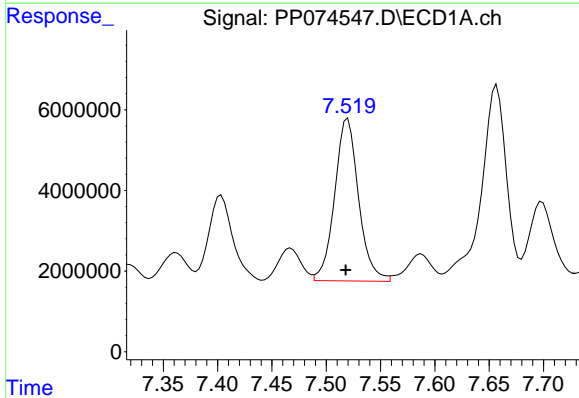
Manual Integrations
 APPROVED

Reviewed By :Yogesh Patel 08/22/2025
 Supervised By :mohammad ahmed 08/25/2025



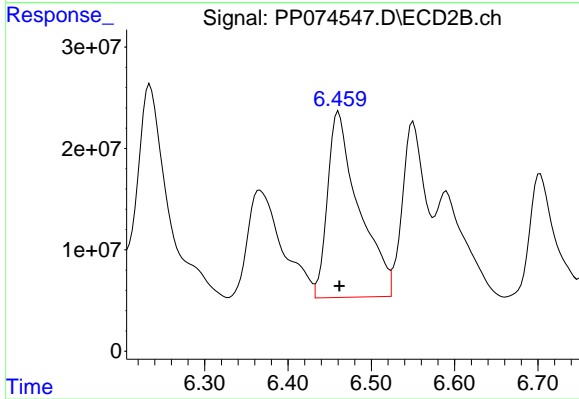
#28 AR-1254-3

R.T.: 6.233 min
 Delta R.T.: -0.002 min
 Response: 427716151
 Conc: 690.08 ng/ml m



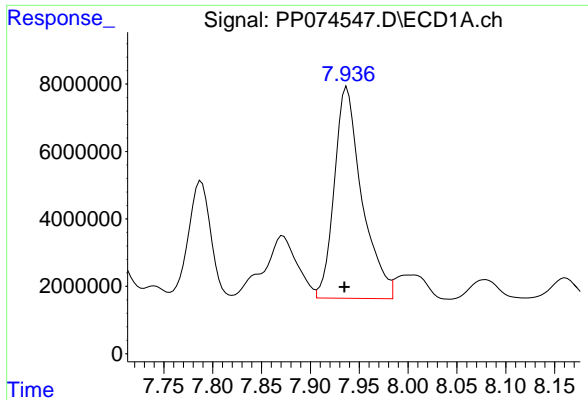
#29 AR-1254-4

R.T.: 7.520 min
 Delta R.T.: 0.002 min
 Response: 61774793
 Conc: 937.21 ng/ml



#29 AR-1254-4

R.T.: 6.461 min
 Delta R.T.: -0.001 min
 Response: 478150329
 Conc: 1020.32 ng/ml



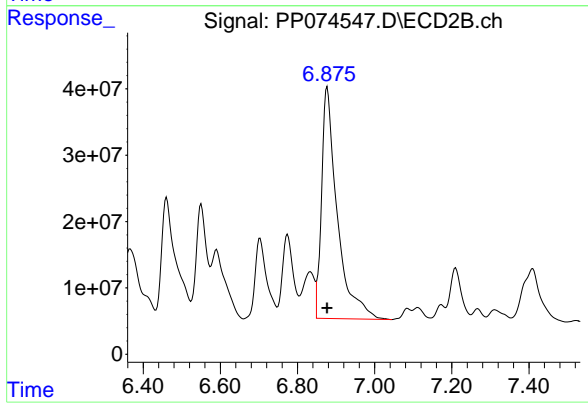
#30 AR-1254-5

R.T.: 7.937 min
 Delta R.T.: 0.003 min
 Response: 123071906
 Conc: 1481.28 ng/ml

Instrument :
 ECD_P
 ClientSampleId :
 K262-20A

Manual Integrations
 APPROVED

Reviewed By :Yogesh Patel 08/22/2025
 Supervised By :mohammad ahmed 08/25/2025



#30 AR-1254-5

R.T.: 6.877 min
 Delta R.T.: 0.000 min
 Response: 990787618
 Conc: 2019.95 ng/ml