

Data Path : Z:\pestpcbsrv\HPCHEM1\ECD_P\Data\PP082125\
 Data File : PP074548.D
 Signal(s) : Signal #1: ECD1A.ch Signal #2: ECD2B.ch
 Acq On : 21 Aug 2025 17:01
 Operator : YP\AJ
 Sample : Q2922-17
 Misc :
 ALS Vial : 19 Sample Multiplier: 1

Instrument :
 ECD_P
ClientSampleId :
 K262-21A

Manual Integrations
APPROVED

Reviewed By :Yogesh Patel 08/22/2025
 Supervised By :mohammad ahmed 08/25/2025

Integration File signal 1: autoint1.e
 Integration File signal 2: autoint2.e
 Quant Time: Aug 22 00:24:09 2025
 Quant Method : Z:\pestpcbsrv\HPCHEM1\ECD_P\methods\PP081925.M
 Quant Title : GC EXTRACTABLES
 QLast Update : Wed Aug 20 06:20:44 2025
 Response via : Initial Calibration
 Integrator: ChemStation

Volume Inj. : 2 µl
 Signal #1 Phase : ZB-MR1 Signal #2 Phase: ZB-MR2
 Signal #1 Info : 30Mx0.32mmx 0.50µ Signal #2 Info : 30M x 0.32mm x 0.25µm

Compound	RT#1	RT#2	Resp#1	Resp#2	ng/ml	ng/ml

System Monitoring Compounds						
1) SA Tetrachlo...	4.658	3.802	26898856	89893952	21.982m	18.591
2) SA Decachlor...	10.441	8.811	21525998	241.2E6	21.798	32.163 #
Target Compounds						
26) L6 AR-1254-1	6.668	5.690	92308907	754.8E6	1584.174	1583.254
27) L6 AR-1254-2	6.879	5.832	149.2E6	518.8E6	1828.600	1473.339
28) L6 AR-1254-3	7.240	6.235	173.8E6	1559.7E6	1948.267	2516.503 #
29) L6 AR-1254-4	7.521	6.461	145.3E6	1237.0E6	2204.569	2639.623
30) L6 AR-1254-5	7.937	6.879	262.5E6	2421.5E6	3159.566	4936.887 #

(f)=RT Delta > 1/2 Window (#)=Amounts differ by > 25% (m)=manual int.

Data Path : Z:\pestpcbsrv\HPCHEM1\ECD_P\Data\PP082125\
 Data File : PP074548.D
 Signal(s) : Signal #1: ECD1A.ch Signal #2: ECD2B.ch
 Acq On : 21 Aug 2025 17:01
 Operator : YP\AJ
 Sample : Q2922-17
 Misc :
 ALS Vial : 19 Sample Multiplier: 1

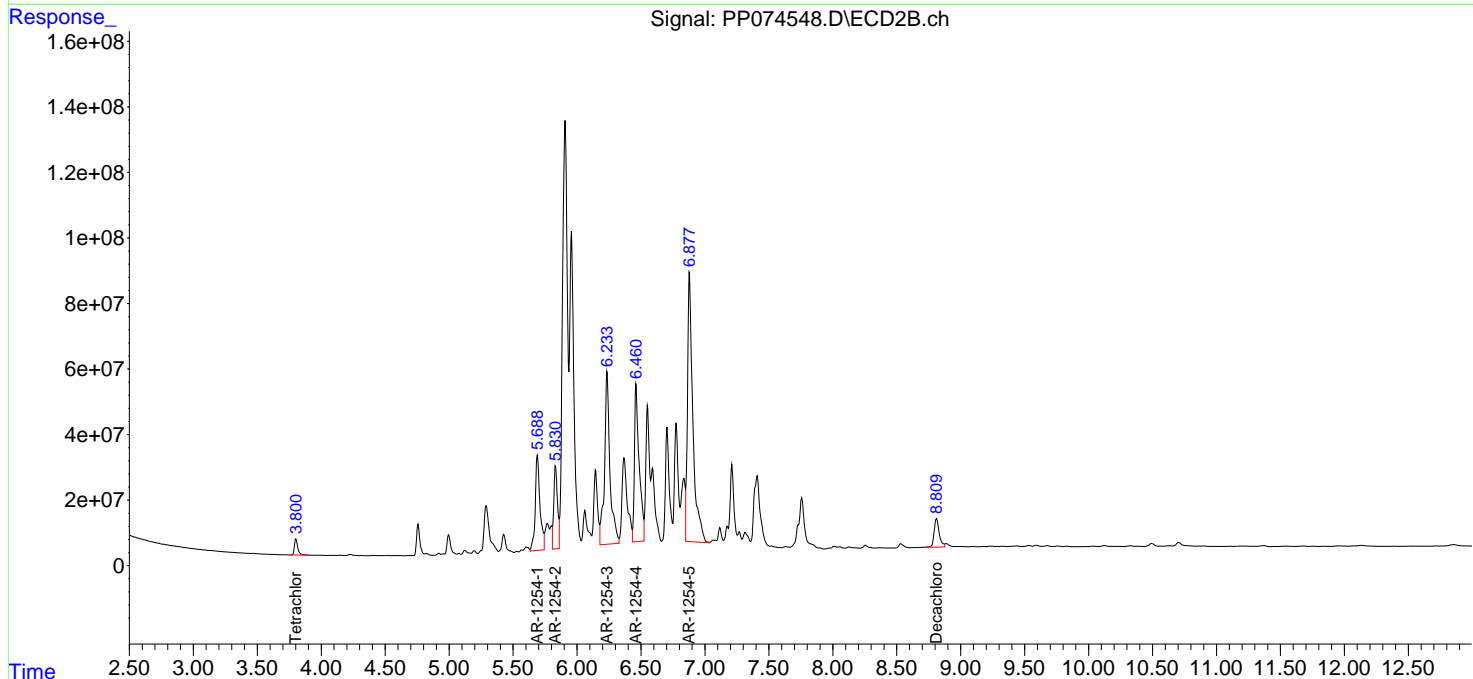
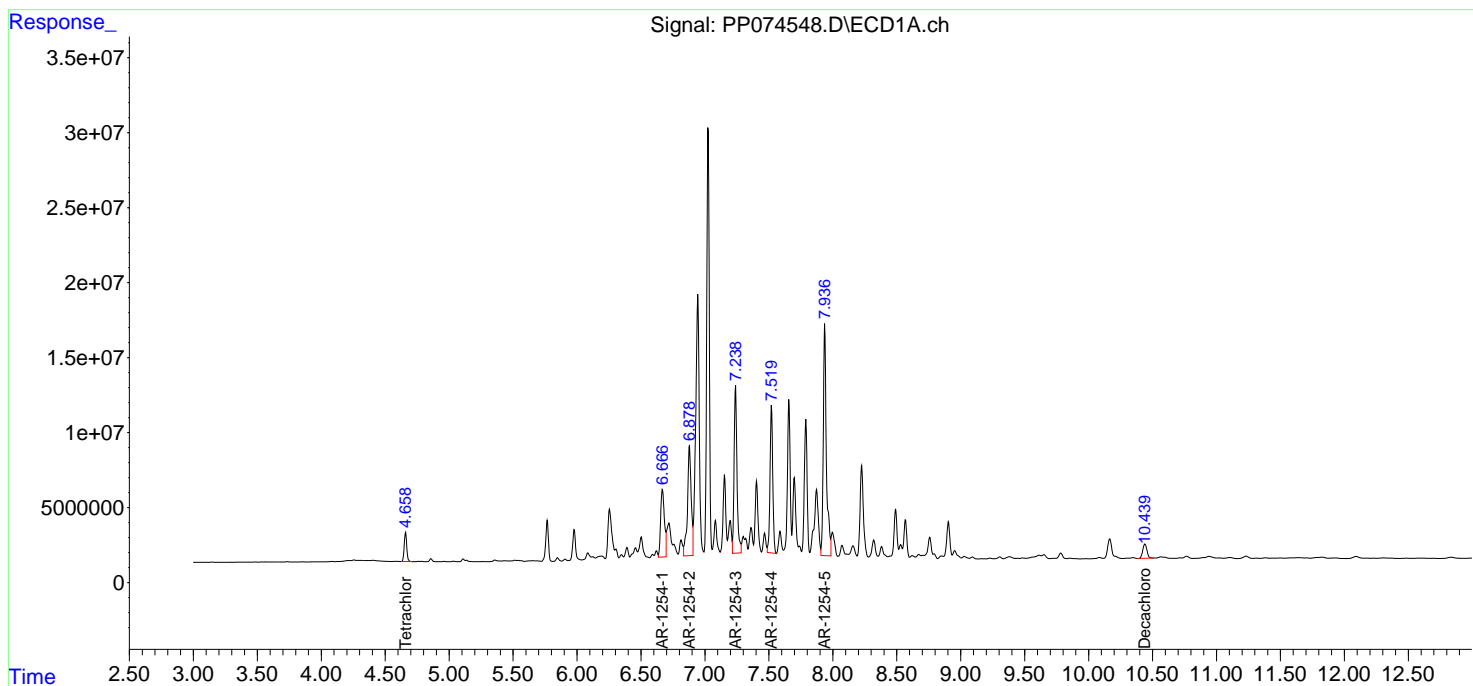
Instrument :
 ECD_P
 ClientSampleId :
 K262-21A

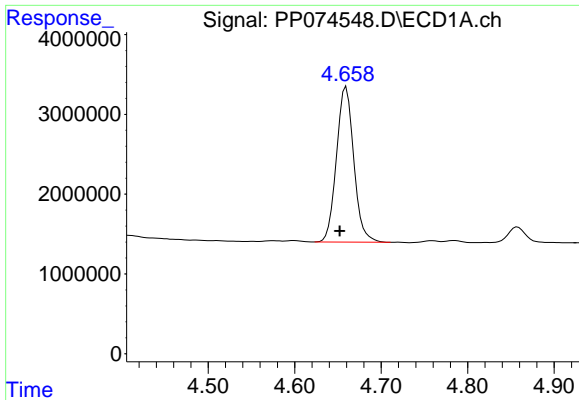
Manual Integrations
 APPROVED

Reviewed By :Yogesh Patel 08/22/2025
 Supervised By :mohammad ahmed 08/25/2025

Integration File signal 1: autoint1.e
 Integration File signal 2: autoint2.e
 Quant Time: Aug 22 00:24:09 2025
 Quant Method : Z:\pestpcbsrv\HPCHEM1\ECD_P\methods\PP081925.M
 Quant Title : GC EXTRACTABLES
 QLast Update : Wed Aug 20 06:20:44 2025
 Response via : Initial Calibration
 Integrator: ChemStation

Volume Inj. : 2 µl
 Signal #1 Phase : ZB-MR1 Signal #2 Phase: ZB-MR2
 Signal #1 Info : 30Mx0.32mmx 0.50µ Signal #2 Info : 30M x 0.32mm x 0.25µm



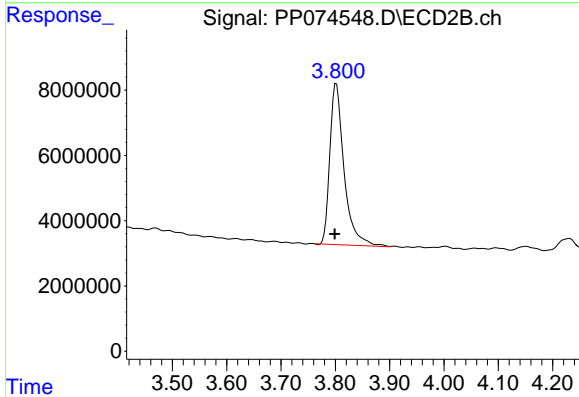


#1 Tetrachloro-m-xylene
 R.T.: 4.658 min
 Delta R.T.: 0.006 min
 Response: 26898856
 Conc: 21.98 ng/ml

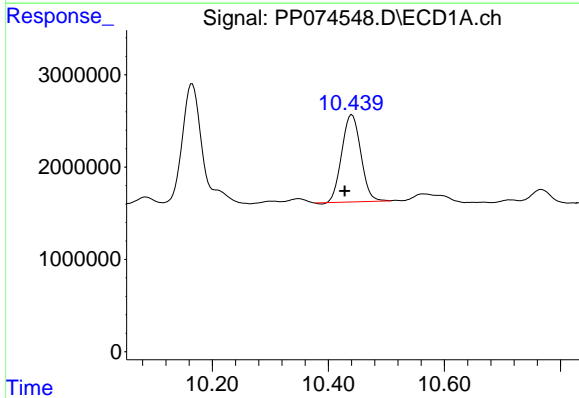
Instrument :
 ECD_P
 ClientSampleId :
 K262-21A

Manual Integrations
 APPROVED

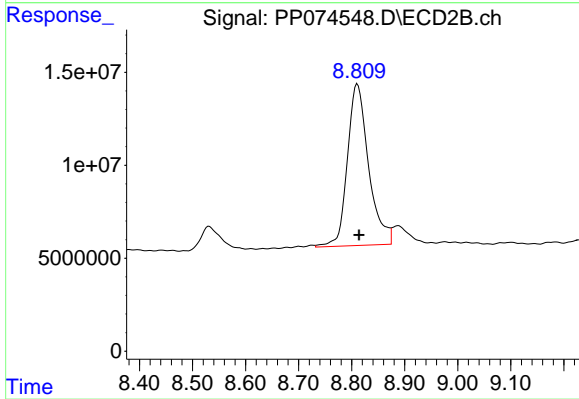
Reviewed By :Yogesh Patel 08/22/2025
 Supervised By :mohammad ahmed 08/25/2025



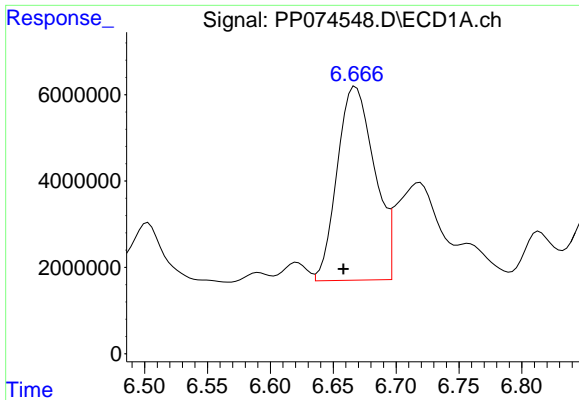
#1 Tetrachloro-m-xylene
 R.T.: 3.802 min
 Delta R.T.: 0.003 min
 Response: 89893952
 Conc: 18.59 ng/ml



#2 Decachlorobiphenyl
 R.T.: 10.441 min
 Delta R.T.: 0.012 min
 Response: 21525998
 Conc: 21.80 ng/ml



#2 Decachlorobiphenyl
 R.T.: 8.811 min
 Delta R.T.: -0.003 min
 Response: 241198600
 Conc: 32.16 ng/ml



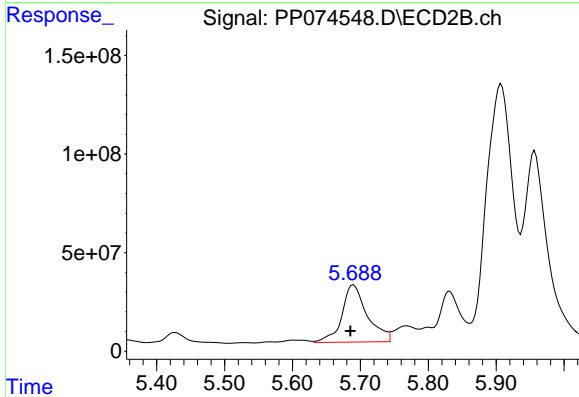
#26 AR-1254-1

R.T.: 6.668 min
 Delta R.T.: 0.010 min
 Response: 92308907
 Conc: 1584.17 ng/ml

Instrument :
 ECD_P
 ClientSampleId :
 K262-21A

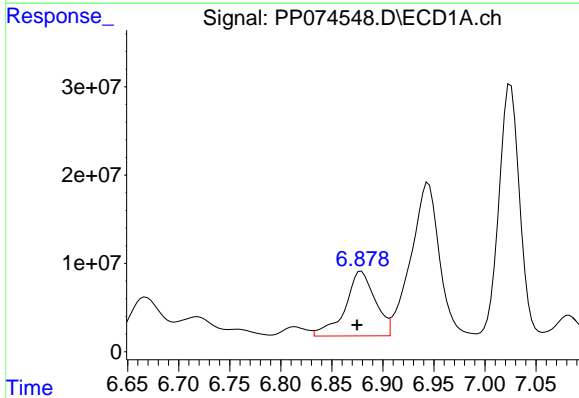
Manual Integrations
 APPROVED

Reviewed By :Yogesh Patel 08/22/2025
 Supervised By :mohammad ahmed 08/25/2025



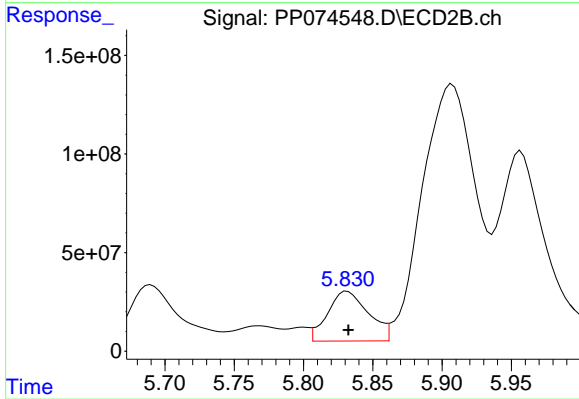
#26 AR-1254-1

R.T.: 5.690 min
 Delta R.T.: 0.005 min
 Response: 754753652
 Conc: 1583.25 ng/ml



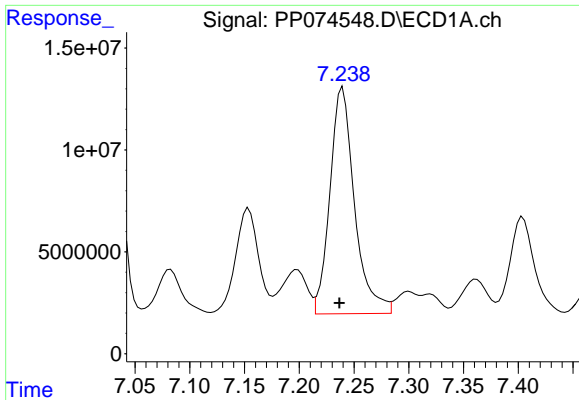
#27 AR-1254-2

R.T.: 6.879 min
 Delta R.T.: 0.004 min
 Response: 149242998
 Conc: 1828.60 ng/ml



#27 AR-1254-2

R.T.: 5.832 min
 Delta R.T.: 0.000 min
 Response: 518810814
 Conc: 1473.34 ng/ml



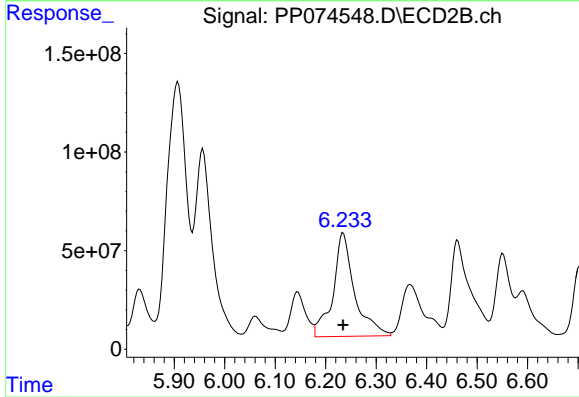
#28 AR-1254-3

R.T.: 7.240 min
 Delta R.T.: 0.003 min
 Response: 173798000
 Conc: 1948.27 ng/ml

Instrument :
 ECD_P
 ClientSampleId :
 K262-21A

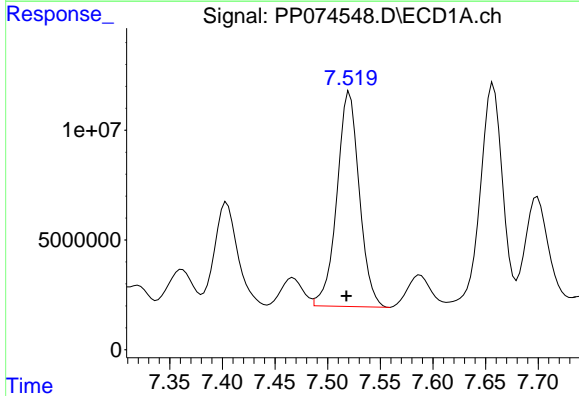
Manual Integrations
 APPROVED

Reviewed By :Yogesh Patel 08/22/2025
 Supervised By :mohammad ahmed 08/25/2025



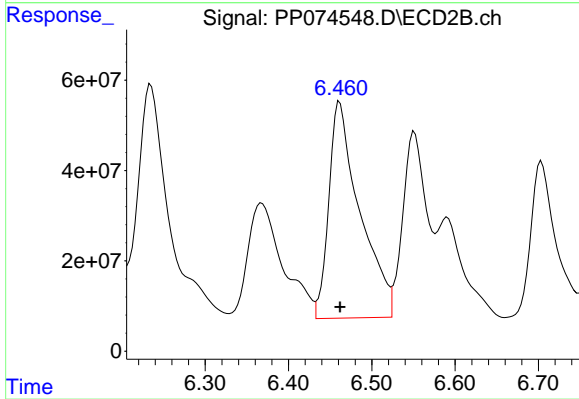
#28 AR-1254-3

R.T.: 6.235 min
 Delta R.T.: 0.000 min
 Response: 1559741750
 Conc: 2516.50 ng/ml



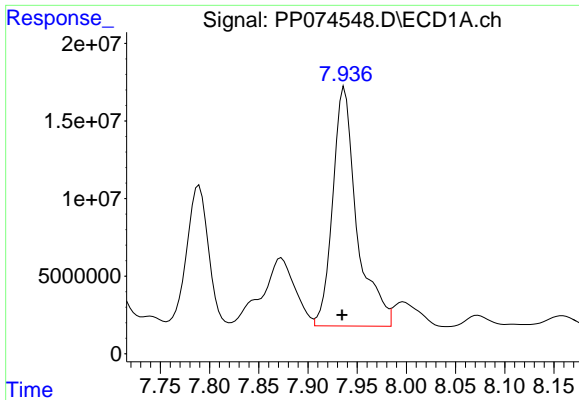
#29 AR-1254-4

R.T.: 7.521 min
 Delta R.T.: 0.003 min
 Response: 145311085
 Conc: 2204.57 ng/ml



#29 AR-1254-4

R.T.: 6.461 min
 Delta R.T.: 0.000 min
 Response: 1236997180
 Conc: 2639.62 ng/ml



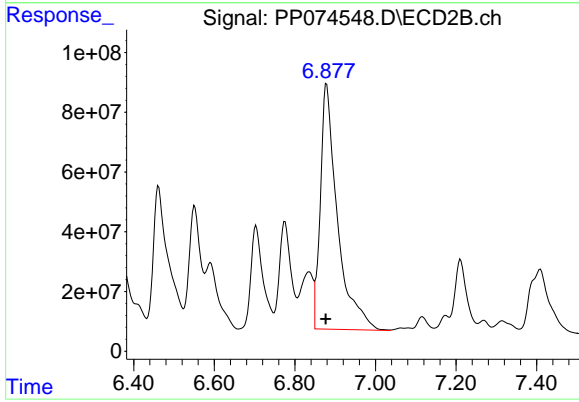
#30 AR-1254-5

R.T.: 7.937 min
 Delta R.T.: 0.002 min
 Response: 262512550
 Conc: 3159.57 ng/ml

Instrument :
 ECD_P
 ClientSampleId :
 K262-21A

Manual Integrations
 APPROVED

Reviewed By :Yogesh Patel 08/22/2025
 Supervised By :mohammad ahmed 08/25/2025



#30 AR-1254-5

R.T.: 6.879 min
 Delta R.T.: 0.002 min
 Response: 2421548959
 Conc: 4936.89 ng/ml