

Data Path : Z:\pestpcbsrv\HPCHEM1\ECD_P\Data\PP082125\
 Data File : PP074550.D
 Signal(s) : Signal #1: ECD1A.ch Signal #2: ECD2B.ch
 Acq On : 21 Aug 2025 17:33
 Operator : YP\AJ
 Sample : Q2923-03
 Misc :
 ALS Vial : 21 Sample Multiplier: 1

Instrument :
 ECD_P
ClientSampleId :
 K262-23A

Manual Integrations
APPROVED

Reviewed By :Yogesh Patel 08/22/2025
 Supervised By :mohammad ahmed 08/25/2025

Integration File signal 1: autoint1.e
 Integration File signal 2: autoint2.e
 Quant Time: Aug 22 00:24:43 2025
 Quant Method : Z:\pestpcbsrv\HPCHEM1\ECD_P\methods\PP081925.M
 Quant Title : GC EXTRACTABLES
 QLast Update : Wed Aug 20 06:20:44 2025
 Response via : Initial Calibration
 Integrator: ChemStation

Volume Inj. : 2 µl
 Signal #1 Phase : ZB-MR1 Signal #2 Phase: ZB-MR2
 Signal #1 Info : 30Mx0.32mmx 0.50µ Signal #2 Info : 30M x 0.32mm x 0.25µm

Compound	RT#1	RT#2	Resp#1	Resp#2	ng/ml	ng/ml

System Monitoring Compounds						
1) SA Tetrachlo...	4.657	3.799	21462338	70897120	17.539	14.662
2) SA Decachlor...	10.440	8.811	12806393	135.5E6	12.968	18.062 #
Target Compounds						
26) L6 AR-1254-1	6.669	5.689	42852046	307.2E6	735.412	644.414m
27) L6 AR-1254-2	6.883	5.829	54502851	105.7E6	667.796	300.035 #
28) L6 AR-1254-3	7.239	6.231	48256376	185.5E6	540.952	299.312m#
29) L6 AR-1254-4	7.519	6.460	36520426	217.1E6	554.065	463.222
30) L6 AR-1254-5	7.936	6.875	57440579	424.6E6	691.347	865.701 #

(f)=RT Delta > 1/2 Window (#)=Amounts differ by > 25% (m)=manual int.

Data Path : Z:\pestpcbsrv\HPCHEM1\ECD_P\Data\PP082125\
 Data File : PP074550.D
 Signal(s) : Signal #1: ECD1A.ch Signal #2: ECD2B.ch
 Acq On : 21 Aug 2025 17:33
 Operator : YP\AJ
 Sample : Q2923-03
 Misc :
 ALS Vial : 21 Sample Multiplier: 1

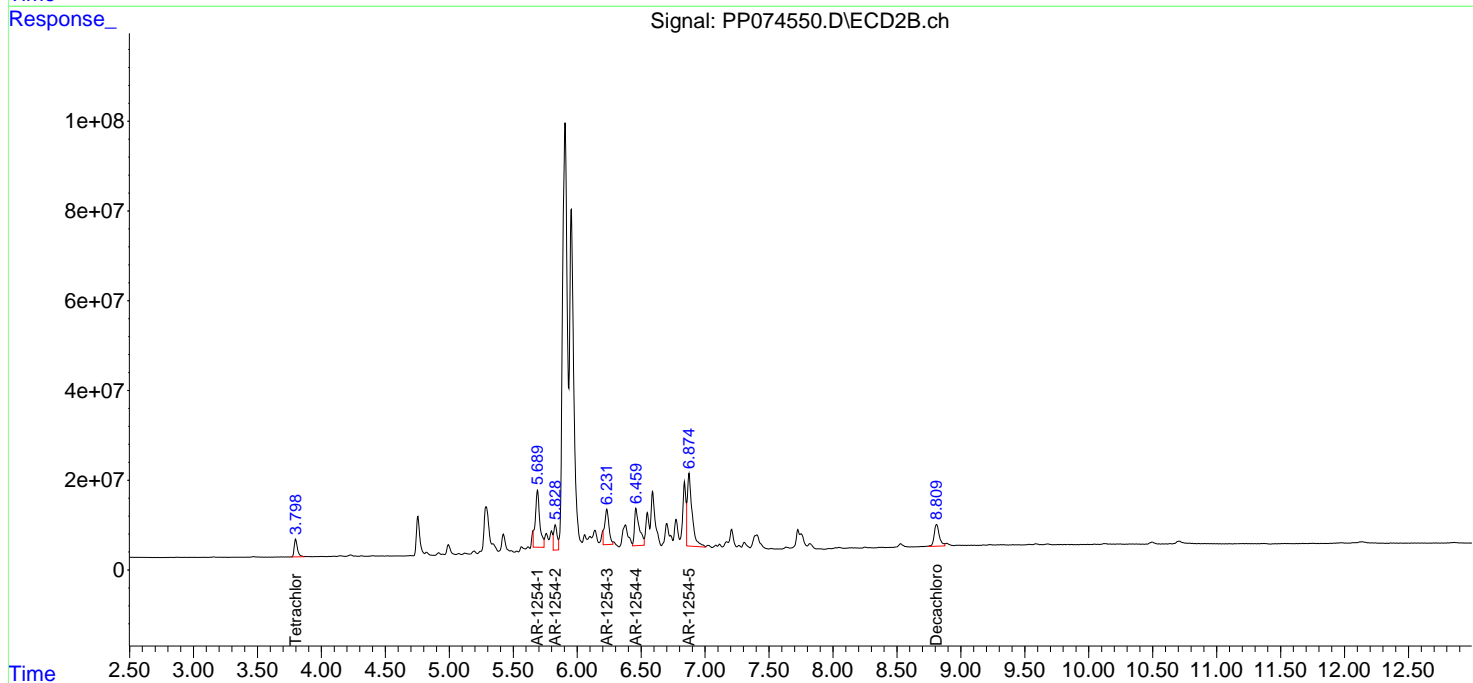
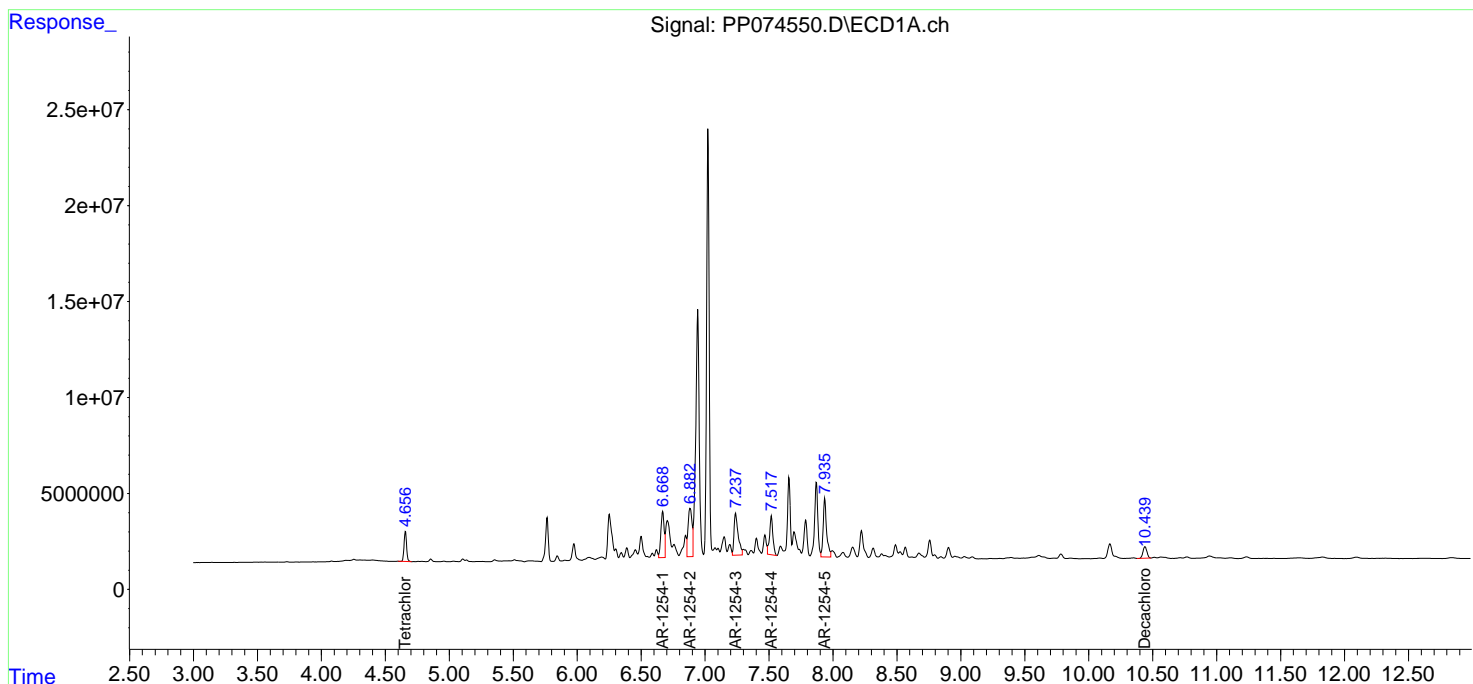
Instrument :
 ECD_P
ClientSampleId :
 K262-23A

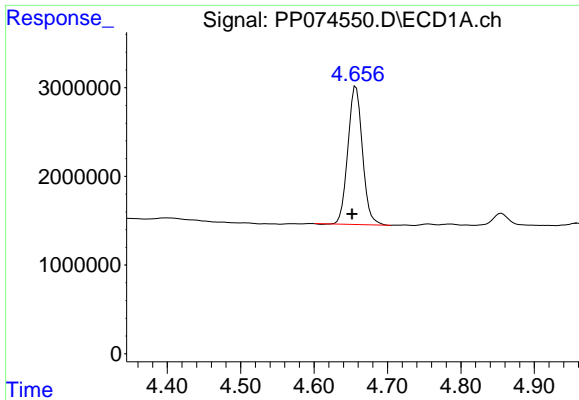
Manual Integrations
APPROVED

Reviewed By :Yogesh Patel 08/22/2025
 Supervised By :mohammad ahmed 08/25/2025

Integration File signal 1: autoint1.e
 Integration File signal 2: autoint2.e
 Quant Time: Aug 22 00:24:43 2025
 Quant Method : Z:\pestpcbsrv\HPCHEM1\ECD_P\methods\PP081925.M
 Quant Title : GC EXTRACTABLES
 QLast Update : Wed Aug 20 06:20:44 2025
 Response via : Initial Calibration
 Integrator: ChemStation

Volume Inj. : 2 µl
 Signal #1 Phase : ZB-MR1 Signal #2 Phase: ZB-MR2
 Signal #1 Info : 30Mx0.32mmx 0.50µ Signal #2 Info : 30M x 0.32mm x 0.25µm

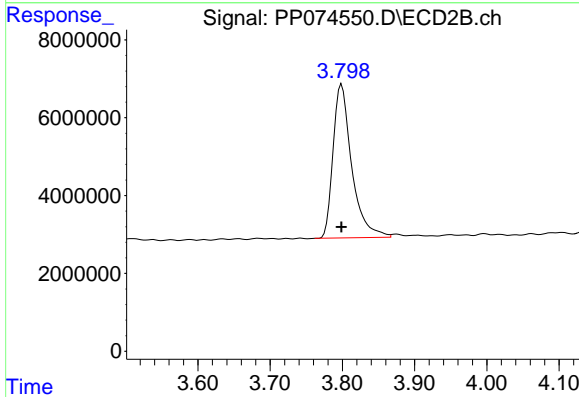




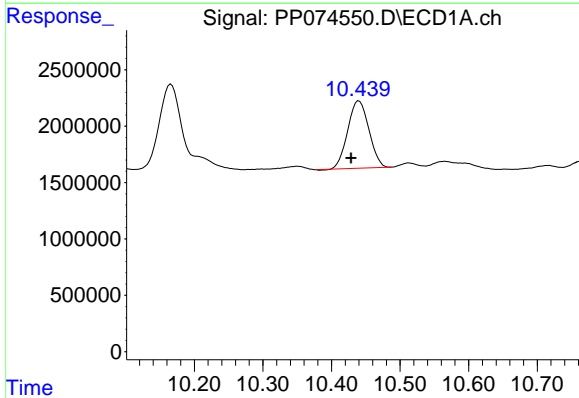
#1 Tetrachloro-m-xylene
 R.T.: 4.657 min
 Delta R.T.: 0.005 min
 Response: 21462338
 Conc: 17.54 ng/ml

Instrument : ECD_P
 ClientSampleId : K262-23A

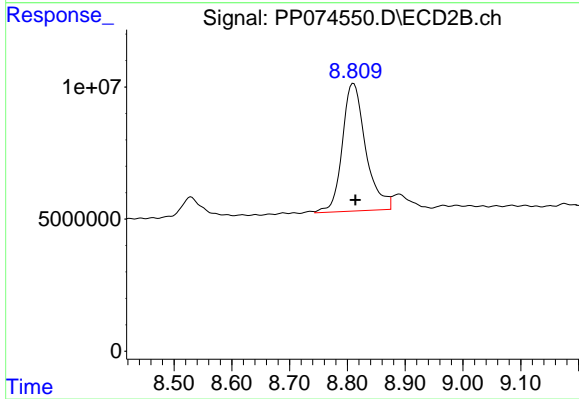
Manual Integrations
APPROVED
 Reviewed By :Yogesh Patel 08/22/2025
 Supervised By :mohammad ahmed 08/25/2025



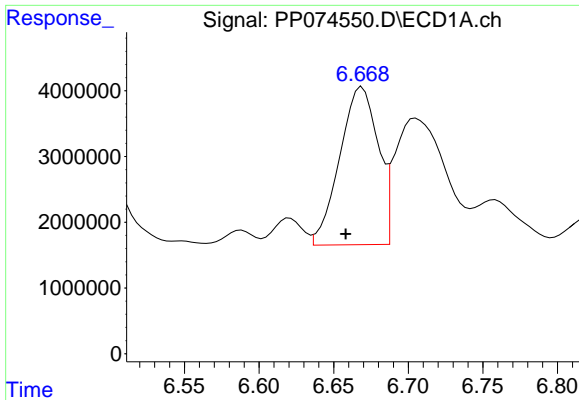
#1 Tetrachloro-m-xylene
 R.T.: 3.799 min
 Delta R.T.: 0.000 min
 Response: 70897120
 Conc: 14.66 ng/ml



#2 Decachlorobiphenyl
 R.T.: 10.440 min
 Delta R.T.: 0.012 min
 Response: 12806393
 Conc: 12.97 ng/ml



#2 Decachlorobiphenyl
 R.T.: 8.811 min
 Delta R.T.: -0.003 min
 Response: 135450938
 Conc: 18.06 ng/ml



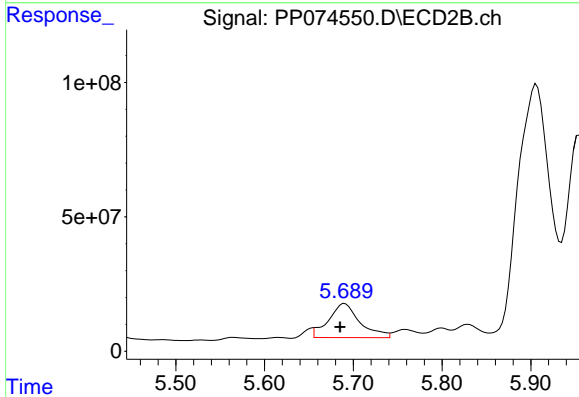
#26 AR-1254-1

R.T.: 6.669 min
 Delta R.T.: 0.011 min
 Response: 42852046
 Conc: 735.41 ng/ml

Instrument :
 ECD_P
 ClientSampleId :
 K262-23A

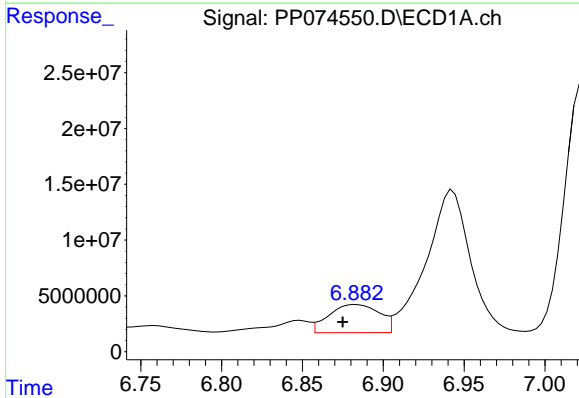
Manual Integrations
 APPROVED

Reviewed By :Yogesh Patel 08/22/2025
 Supervised By :mohammad ahmed 08/25/2025



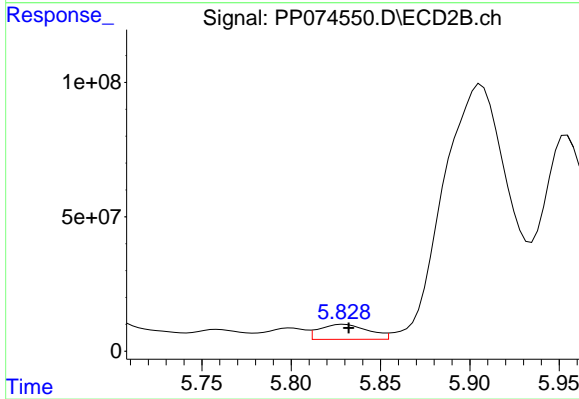
#26 AR-1254-1

R.T.: 5.689 min
 Delta R.T.: 0.004 min
 Response: 307199028
 Conc: 644.41 ng/ml m



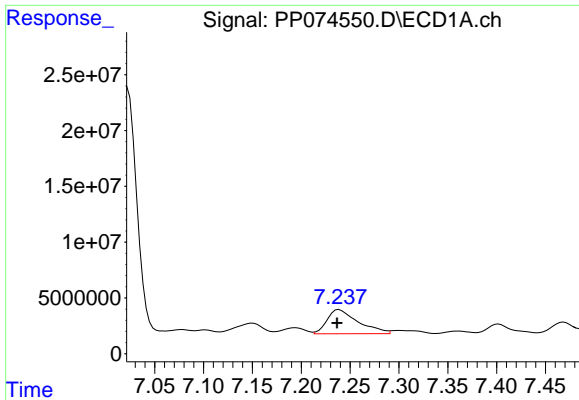
#27 AR-1254-2

R.T.: 6.883 min
 Delta R.T.: 0.008 min
 Response: 54502851
 Conc: 667.80 ng/ml



#27 AR-1254-2

R.T.: 5.829 min
 Delta R.T.: -0.003 min
 Response: 105652263
 Conc: 300.04 ng/ml



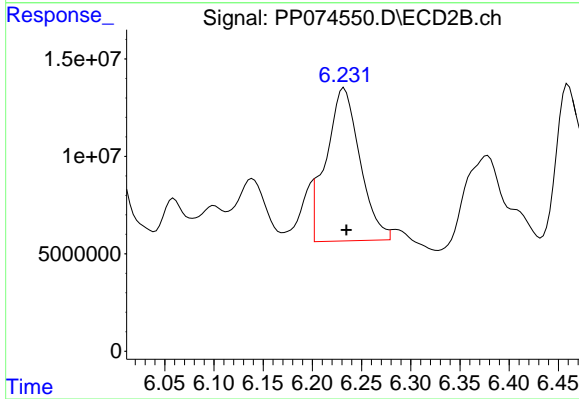
#28 AR-1254-3

R.T.: 7.239 min
 Delta R.T.: 0.002 min
 Response: 48256376
 Conc: 540.95 ng/ml

Instrument :
 ECD_P
 ClientSampleId :
 K262-23A

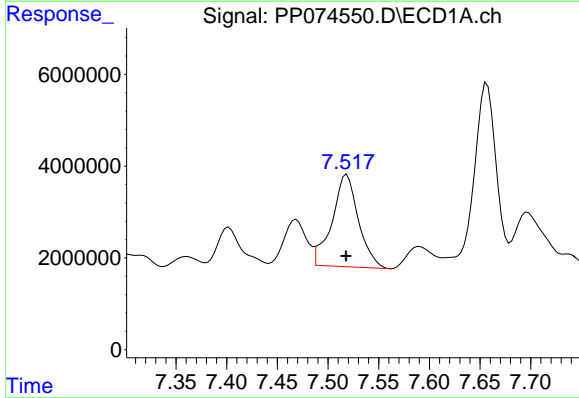
Manual Integrations
 APPROVED

Reviewed By :Yogesh Patel 08/22/2025
 Supervised By :mohammad ahmed 08/25/2025



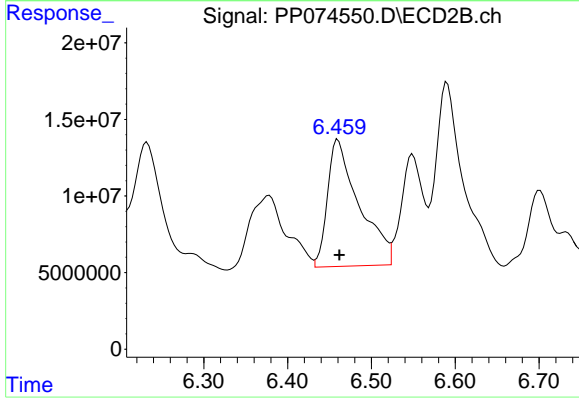
#28 AR-1254-3

R.T.: 6.231 min
 Delta R.T.: -0.004 min
 Response: 185515141
 Conc: 299.31 ng/ml m



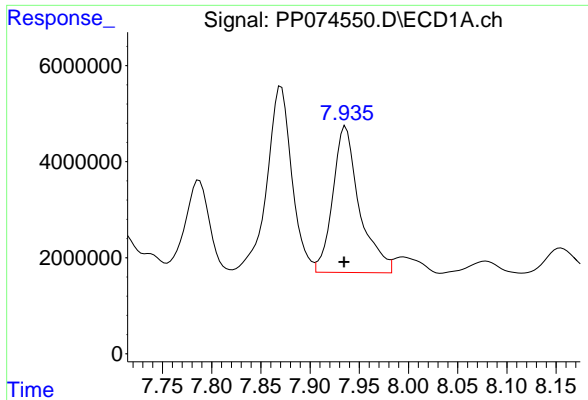
#29 AR-1254-4

R.T.: 7.519 min
 Delta R.T.: 0.000 min
 Response: 36520426
 Conc: 554.07 ng/ml



#29 AR-1254-4

R.T.: 6.460 min
 Delta R.T.: -0.002 min
 Response: 217078110
 Conc: 463.22 ng/ml



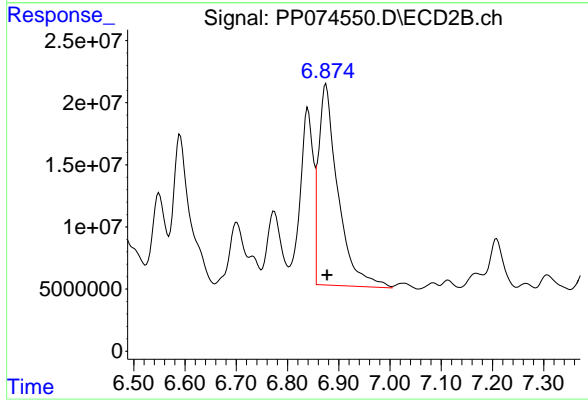
#30 AR-1254-5

R.T.: 7.936 min
Delta R.T.: 0.001 min
Response: 57440579
Conc: 691.35 ng/ml

Instrument :
ECD_P
ClientSampleId :
K262-23A

Manual Integrations
APPROVED

Reviewed By :Yogesh Patel 08/22/2025
Supervised By :mohammad ahmed 08/25/2025



#30 AR-1254-5

R.T.: 6.875 min
Delta R.T.: -0.002 min
Response: 424627566
Conc: 865.70 ng/ml