

Data Path : Z:\pestpcbsrv\HPCHEM1\ECD\_P\Data\PP082125\  
 Data File : PP074551.D  
 Signal(s) : Signal #1: ECD1A.ch Signal #2: ECD2B.ch  
 Acq On : 21 Aug 2025 17:49  
 Operator : YP\AJ  
 Sample : Q2923-06  
 Misc :  
 ALS Vial : 22 Sample Multiplier: 1

**Instrument :**  
 ECD\_P  
**ClientSampleId :**  
 K262-24A

**Manual Integrations**  
**APPROVED**

Reviewed By :Yogesh Patel 08/22/2025  
 Supervised By :mohammad ahmed 08/25/2025

Integration File signal 1: autoint1.e  
 Integration File signal 2: autoint2.e  
 Quant Time: Aug 22 00:25:05 2025  
 Quant Method : Z:\pestpcbsrv\HPCHEM1\ECD\_P\methods\PP081925.M  
 Quant Title : GC EXTRACTABLES  
 QLast Update : Wed Aug 20 06:20:44 2025  
 Response via : Initial Calibration  
 Integrator: ChemStation

Volume Inj. : 2 µl  
 Signal #1 Phase : ZB-MR1 Signal #2 Phase: ZB-MR2  
 Signal #1 Info : 30Mx0.32mmx 0.50µ Signal #2 Info : 30M x 0.32mm x 0.25µm

Compound	RT#1	RT#2	Resp#1	Resp#2	ng/ml	ng/ml
-----						
System Monitoring Compounds						
1) SA Tetrachlo...	4.658	3.802	21753737	69245787	17.777m	14.321
2) SA Decachlor...	10.440	8.813	12609836	116.2E6	12.769	15.494
Target Compounds						
26) L6 AR-1254-1	6.670	5.691	38343329	276.4E6	658.035	579.820
27) L6 AR-1254-2	6.884	5.831	48653164	93928700	596.123	266.742 #
28) L6 AR-1254-3	7.240	6.231	45732506	171.7E6	512.659	277.029m#
29) L6 AR-1254-4	7.520	6.461	35559876	225.4E6	539.492	480.940
30) L6 AR-1254-5	7.937	6.876	60487003	475.5E6	728.014	969.507 #
-----						

(f)=RT Delta > 1/2 Window (#)=Amounts differ by > 25% (m)=manual int.

Data Path : Z:\pestpcbsrv\HPCHEM1\ECD\_P\Data\PP082125\  
 Data File : PP074551.D  
 Signal(s) : Signal #1: ECD1A.ch Signal #2: ECD2B.ch  
 Acq On : 21 Aug 2025 17:49  
 Operator : YP\AJ  
 Sample : Q2923-06  
 Misc :  
 ALS Vial : 22 Sample Multiplier: 1

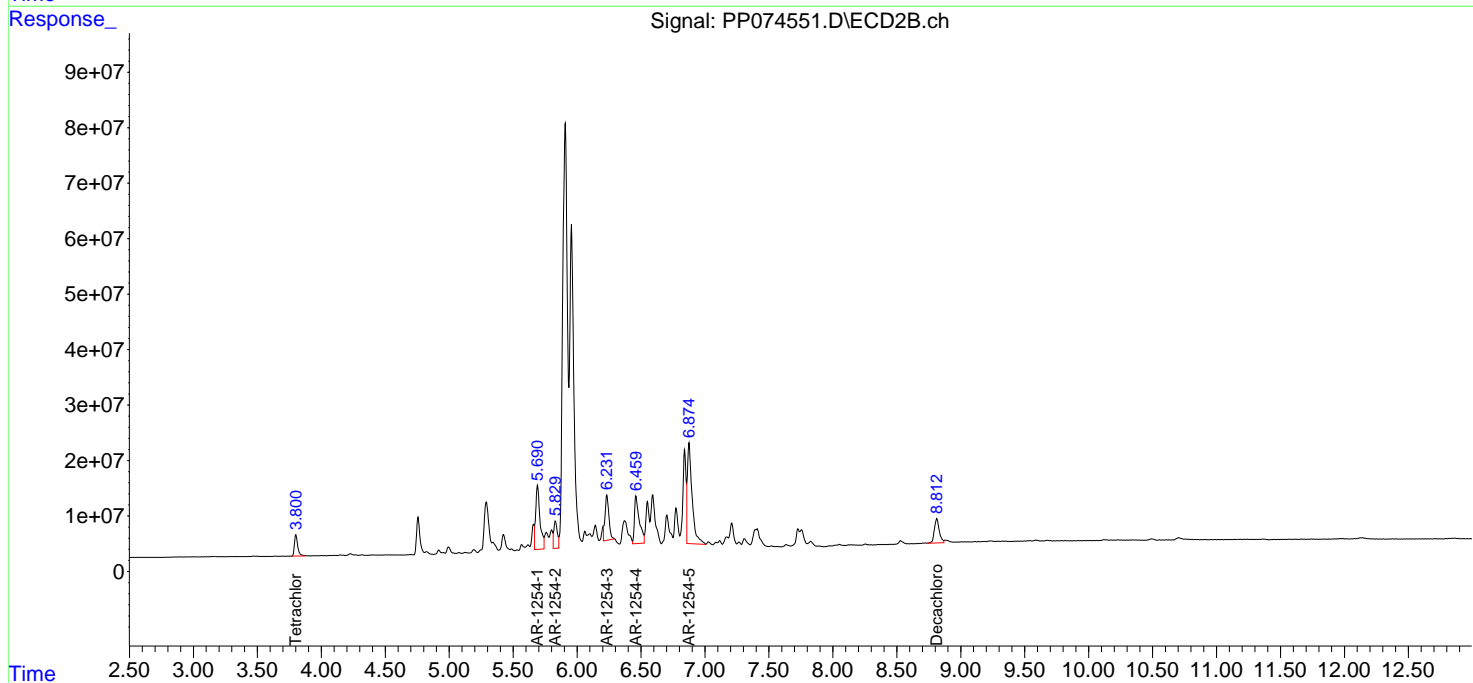
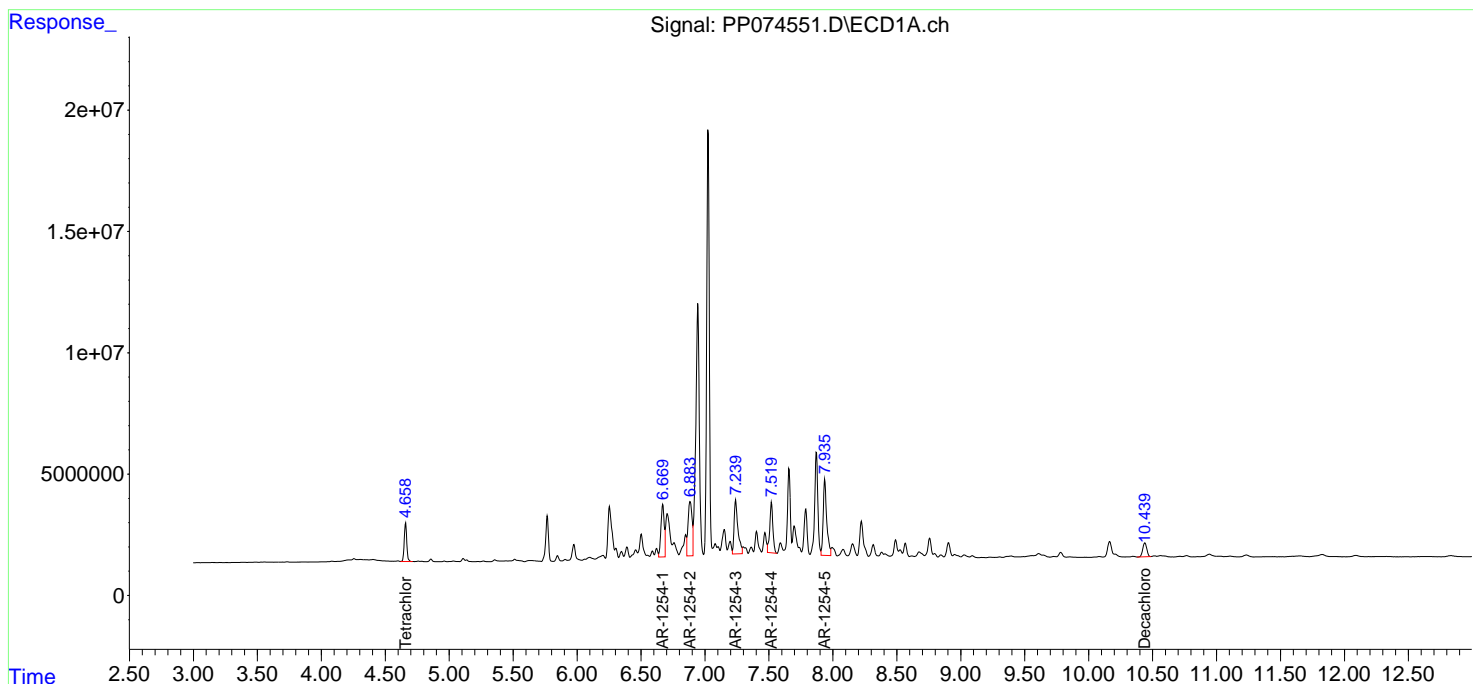
**Instrument :**  
 ECD\_P  
**ClientSampleId :**  
 K262-24A

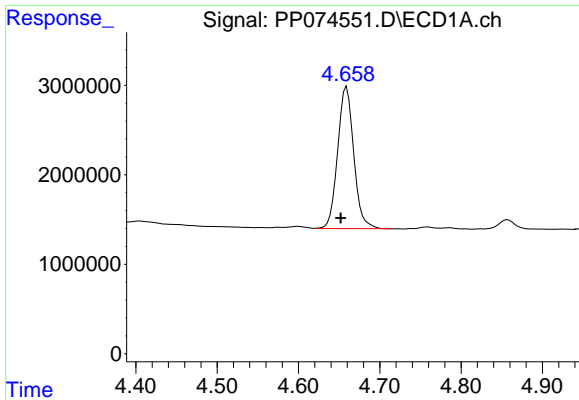
**Manual Integrations**  
**APPROVED**

Reviewed By :Yogesh Patel 08/22/2025  
 Supervised By :mohammad ahmed 08/25/2025

Integration File signal 1: autoint1.e  
 Integration File signal 2: autoint2.e  
 Quant Time: Aug 22 00:25:05 2025  
 Quant Method : Z:\pestpcbsrv\HPCHEM1\ECD\_P\methods\PP081925.M  
 Quant Title : GC EXTRACTABLES  
 QLast Update : Wed Aug 20 06:20:44 2025  
 Response via : Initial Calibration  
 Integrator: ChemStation

Volume Inj. : 2 µl  
 Signal #1 Phase : ZB-MR1 Signal #2 Phase: ZB-MR2  
 Signal #1 Info : 30Mx0.32mmx 0.50µ Signal #2 Info : 30M x 0.32mm x 0.25µm

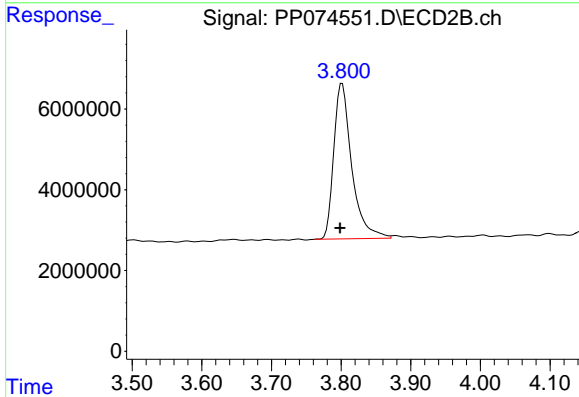




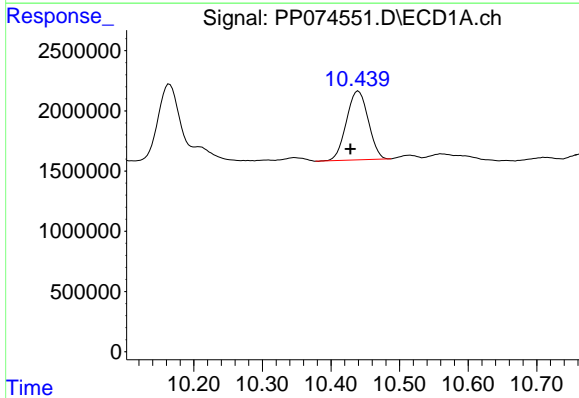
#1 Tetrachloro-m-xylene  
 R.T.: 4.658 min  
 Delta R.T.: 0.006 min  
 Response: 21753737  
 Conc: 17.78 ng/ml

Instrument :  
 ECD\_P  
 ClientSampleId :  
 K262-24A

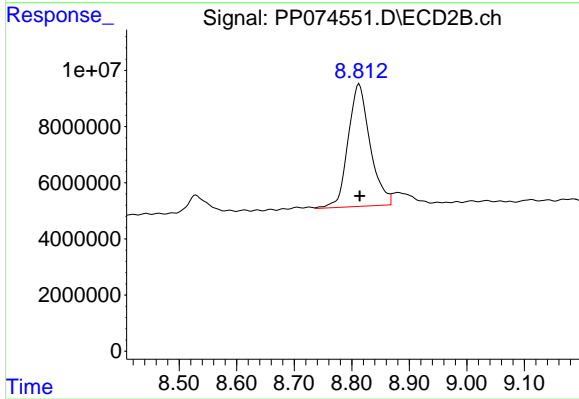
**Manual Integrations**  
**APPROVED**  
 Reviewed By :Yogesh Patel 08/22/2025  
 Supervised By :mohammad ahmed 08/25/2025



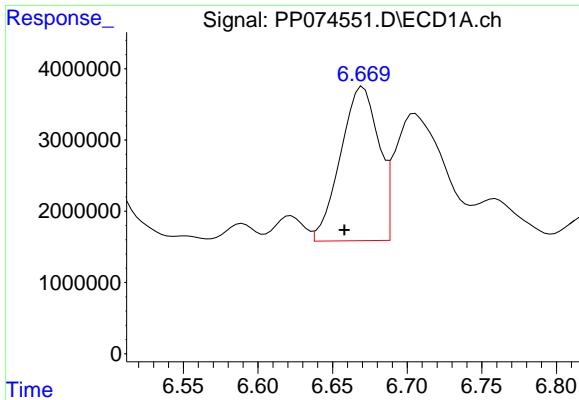
#1 Tetrachloro-m-xylene  
 R.T.: 3.802 min  
 Delta R.T.: 0.003 min  
 Response: 69245787  
 Conc: 14.32 ng/ml



#2 Decachlorobiphenyl  
 R.T.: 10.440 min  
 Delta R.T.: 0.012 min  
 Response: 12609836  
 Conc: 12.77 ng/ml



#2 Decachlorobiphenyl  
 R.T.: 8.813 min  
 Delta R.T.: 0.000 min  
 Response: 116189057  
 Conc: 15.49 ng/ml



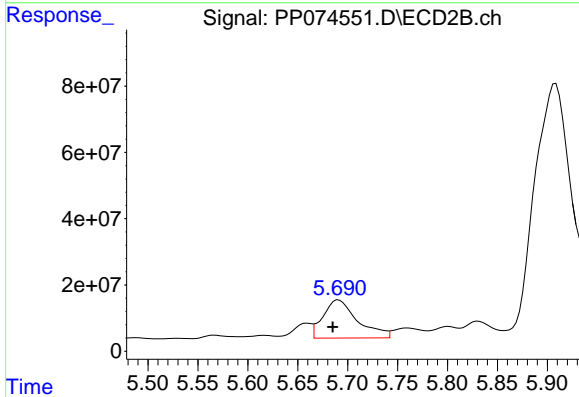
#26 AR-1254-1

R.T.: 6.670 min  
 Delta R.T.: 0.012 min  
 Response: 38343329  
 Conc: 658.03 ng/ml

Instrument :  
 ECD\_P  
 ClientSampleId :  
 K262-24A

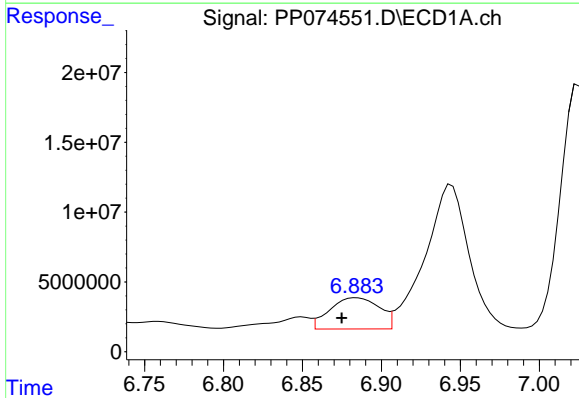
Manual Integrations  
 APPROVED

Reviewed By :Yogesh Patel 08/22/2025  
 Supervised By :mohammad ahmed 08/25/2025



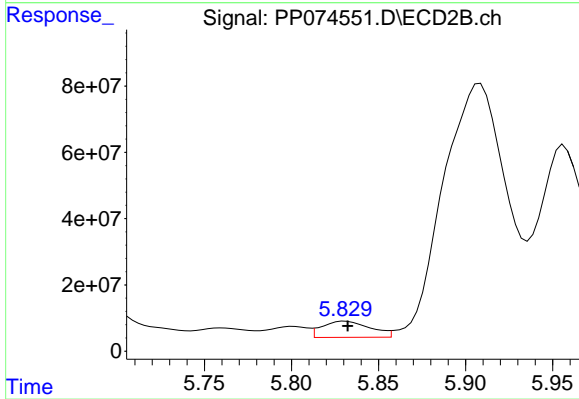
#26 AR-1254-1

R.T.: 5.691 min  
 Delta R.T.: 0.006 min  
 Response: 276406217  
 Conc: 579.82 ng/ml



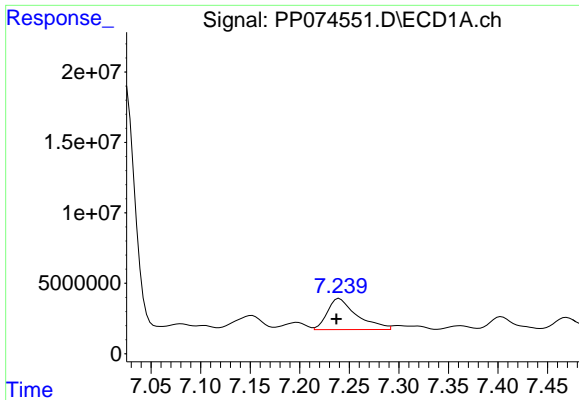
#27 AR-1254-2

R.T.: 6.884 min  
 Delta R.T.: 0.009 min  
 Response: 48653164  
 Conc: 596.12 ng/ml



#27 AR-1254-2

R.T.: 5.831 min  
 Delta R.T.: -0.001 min  
 Response: 93928700  
 Conc: 266.74 ng/ml



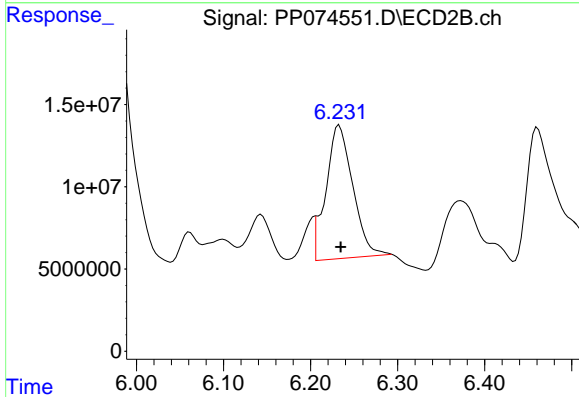
#28 AR-1254-3

R.T.: 7.240 min  
 Delta R.T.: 0.003 min  
 Response: 45732506  
 Conc: 512.66 ng/ml

Instrument :  
 ECD\_P  
 ClientSampleId :  
 K262-24A

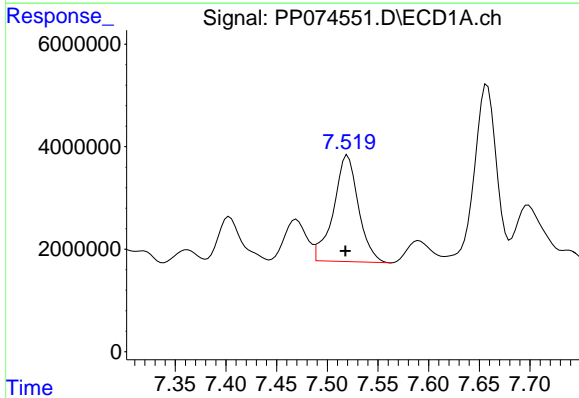
Manual Integrations  
 APPROVED

Reviewed By :Yogesh Patel 08/22/2025  
 Supervised By :mohammad ahmed 08/25/2025



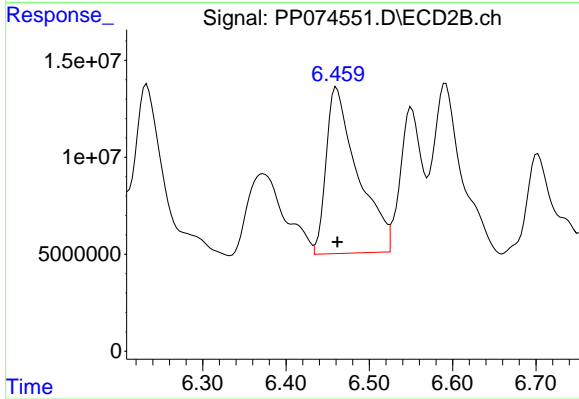
#28 AR-1254-3

R.T.: 6.231 min  
 Delta R.T.: -0.003 min  
 Response: 171703826  
 Conc: 277.03 ng/ml m



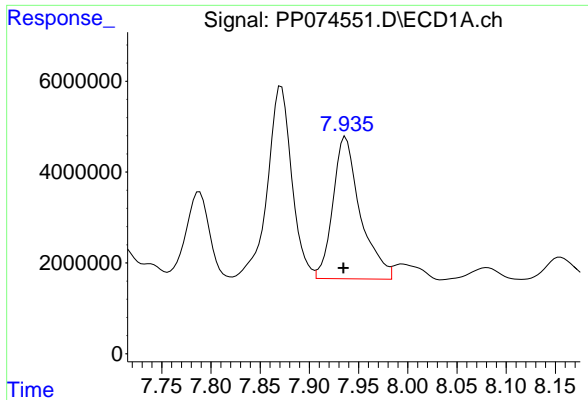
#29 AR-1254-4

R.T.: 7.520 min  
 Delta R.T.: 0.002 min  
 Response: 35559876  
 Conc: 539.49 ng/ml



#29 AR-1254-4

R.T.: 6.461 min  
 Delta R.T.: -0.001 min  
 Response: 225380991  
 Conc: 480.94 ng/ml



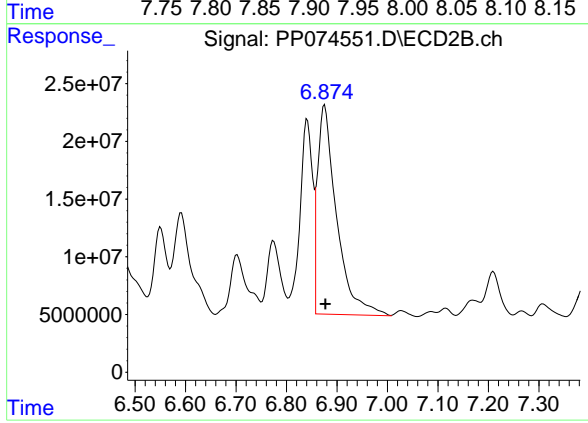
#30 AR-1254-5

R.T.: 7.937 min  
 Delta R.T.: 0.002 min  
 Response: 60487003  
 Conc: 728.01 ng/ml

Instrument :  
 ECD\_P  
 ClientSampleId :  
 K262-24A

Manual Integrations  
 APPROVED

Reviewed By :Yogesh Patel 08/22/2025  
 Supervised By :mohammad ahmed 08/25/2025



#30 AR-1254-5

R.T.: 6.876 min  
 Delta R.T.: -0.001 min  
 Response: 475544432  
 Conc: 969.51 ng/ml