

Data Path : Z:\pestpcbsrv\HPCHEM1\ECD_P\Data\PP082125\
 Data File : PP074556.D
 Signal(s) : Signal #1: ECD1A.ch Signal #2: ECD2B.ch
 Acq On : 21 Aug 2025 19:59
 Operator : YP\AJ
 Sample : AR1660CCC500
 Misc :
 ALS Vial : 3 Sample Multiplier: 1

Instrument :
 ECD_P
 ClientSampleId :
 AR1660CCC500

Integration File signal 1: autoint1.e
 Integration File signal 2: autoint2.e
 Quant Time: Aug 22 00:26:21 2025
 Quant Method : Z:\pestpcbsrv\HPCHEM1\ECD_P\methods\PP081925.M
 Quant Title : GC EXTRACTABLES
 QLast Update : Wed Aug 20 06:20:44 2025
 Response via : Initial Calibration
 Integrator: ChemStation

Volume Inj. : 2 µl
 Signal #1 Phase : ZB-MR1 Signal #2 Phase: ZB-MR2
 Signal #1 Info : 30Mx0.32mmx 0.50µ Signal #2 Info : 30M x 0.32mm x 0.25µm

	Compound	RT#1	RT#2	Resp#1	Resp#2	ng/ml	ng/ml

System Monitoring Compounds							
1)	SA Tetrachlo...	4.660	3.802	58781575	243.1E6	48.036	50.267
2)	SA Decachlor...	10.439	8.816	48252084	333.9E6	48.862	44.524
Target Compounds							
3)	L1 AR-1016-1	5.811	4.902	20989088	253.4E6	476.063	497.546
4)	L1 AR-1016-2	5.833	4.959	31009728	120.3E6	493.458	505.539
5)	L1 AR-1016-3	5.896	5.079	20379566	69281164	453.747	502.388
6)	L1 AR-1016-4	5.993	5.120	17009898	66827269	483.486	478.009
7)	L1 AR-1016-5	6.285	5.335	16639440	74581548	501.398	449.061
31)	L7 AR-1260-1	7.403	6.364	27602921	175.2E6	477.481	466.851
32)	L7 AR-1260-2	7.656	6.550	33129737	238.6E6	480.716	451.182
33)	L7 AR-1260-3	8.013	6.704	26719557	181.2E6	514.974	418.494
34)	L7 AR-1260-4	8.242	7.174	31766593	172.8E6	497.965	452.891
35)	L7 AR-1260-5	8.568	7.413	54554037	443.7E6	481.025	441.696

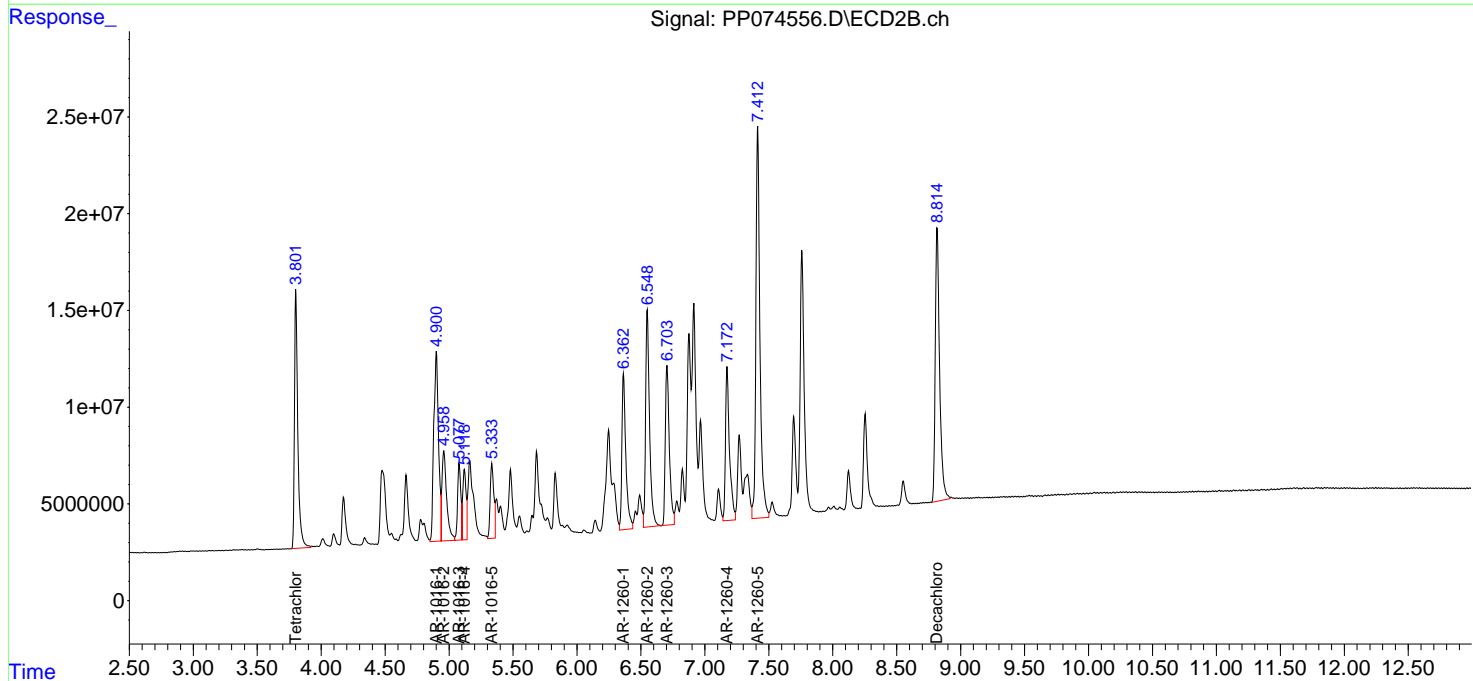
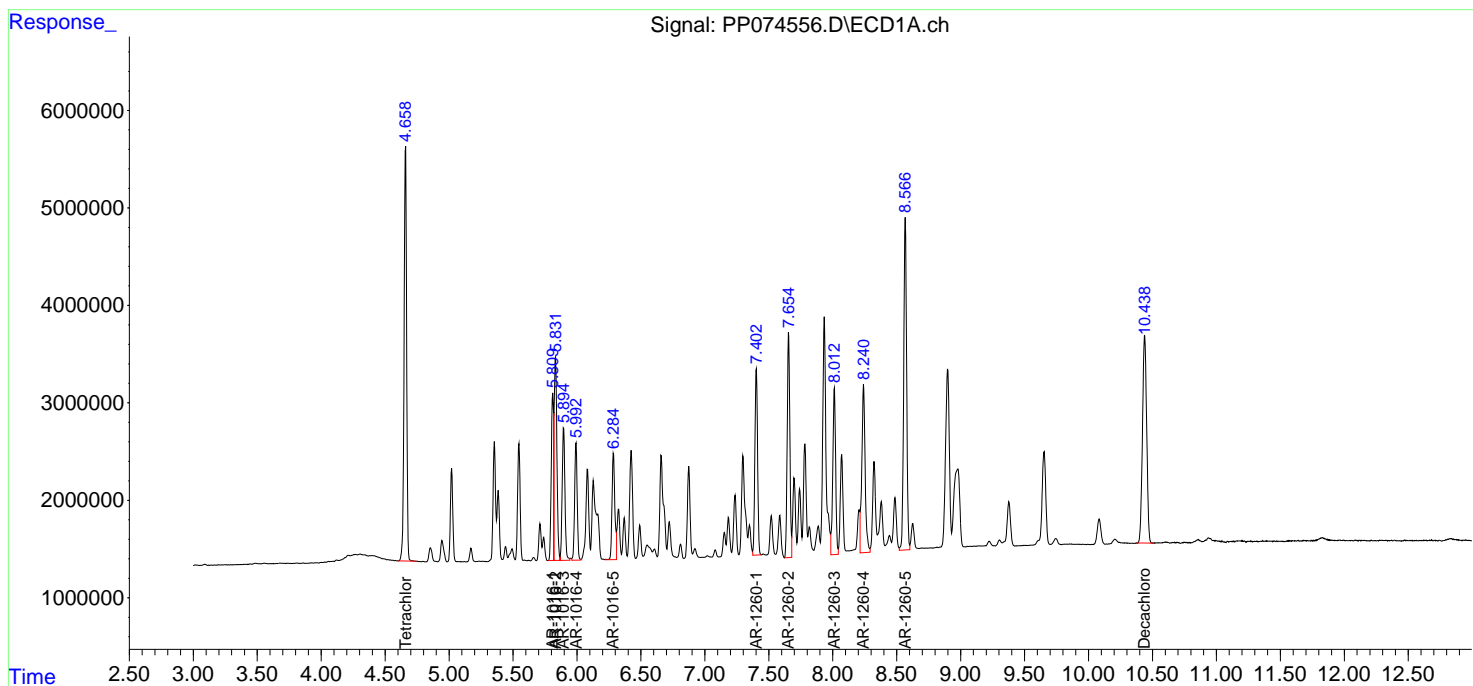
(f)=RT Delta > 1/2 Window (#)=Amounts differ by > 25% (m)=manual int.

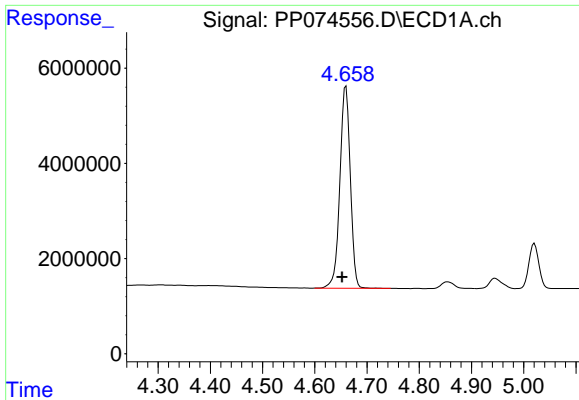
Data Path : Z:\pestpcbsrv\HPCHEM1\ECD_P\Data\PP082125\
 Data File : PP074556.D
 Signal(s) : Signal #1: ECD1A.ch Signal #2: ECD2B.ch
 Acq On : 21 Aug 2025 19:59
 Operator : YP\AJ
 Sample : AR1660CCC500
 Misc :
 ALS Vial : 3 Sample Multiplier: 1

Instrument :
 ECD_P
 ClientSampleId :
 AR1660CCC500

Integration File signal 1: autoint1.e
 Integration File signal 2: autoint2.e
 Quant Time: Aug 22 00:26:21 2025
 Quant Method : Z:\pestpcbsrv\HPCHEM1\ECD_P\methods\PP081925.M
 Quant Title : GC EXTRACTABLES
 QLast Update : Wed Aug 20 06:20:44 2025
 Response via : Initial Calibration
 Integrator: ChemStation

Volume Inj. : 2 µl
 Signal #1 Phase : ZB-MR1 Signal #2 Phase: ZB-MR2
 Signal #1 Info : 30Mx0.32mmx 0.50µ Signal #2 Info : 30M x 0.32mm x 0.25µm

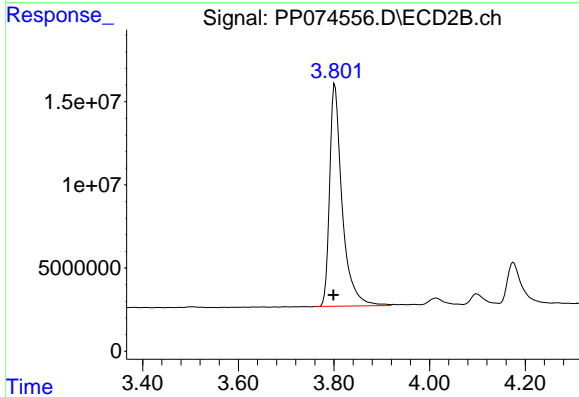




#1 Tetrachloro-m-xylene

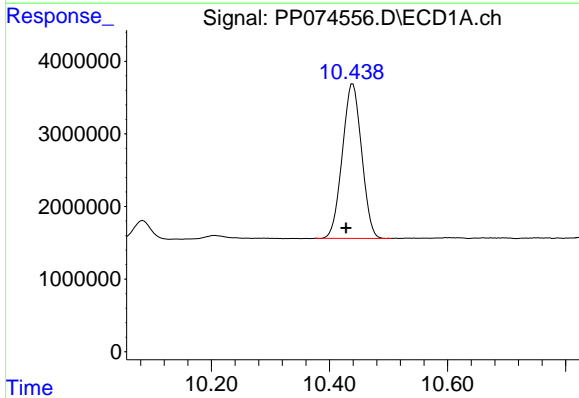
R.T.: 4.660 min
 Delta R.T.: 0.008 min
 Response: 58781575
 Conc: 48.04 ng/ml

Instrument :
 ECD_P
 ClientSampleId :
 AR1660CCC500



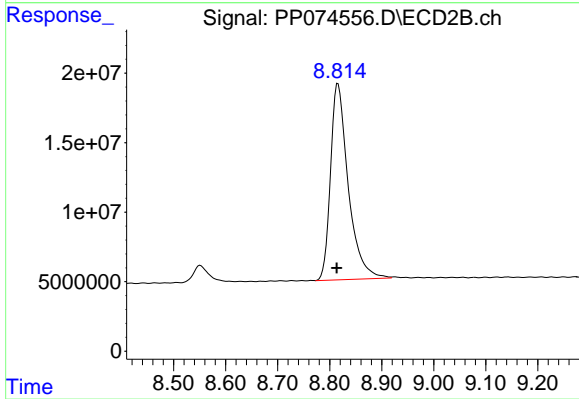
#1 Tetrachloro-m-xylene

R.T.: 3.802 min
 Delta R.T.: 0.003 min
 Response: 243061826
 Conc: 50.27 ng/ml



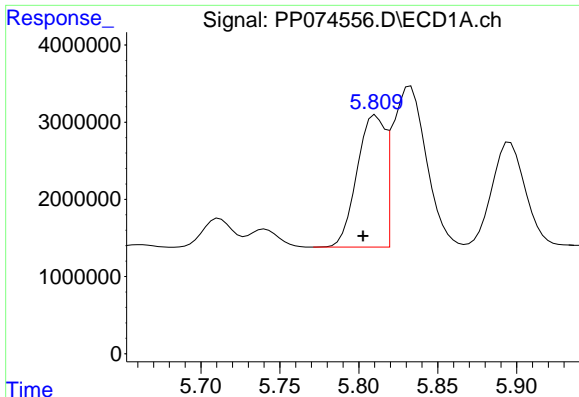
#2 Decachlorobiphenyl

R.T.: 10.439 min
 Delta R.T.: 0.011 min
 Response: 48252084
 Conc: 48.86 ng/ml



#2 Decachlorobiphenyl

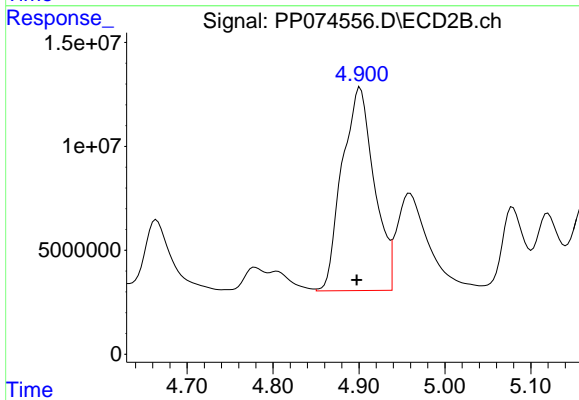
R.T.: 8.816 min
 Delta R.T.: 0.002 min
 Response: 333896066
 Conc: 44.52 ng/ml



#3 AR-1016-1

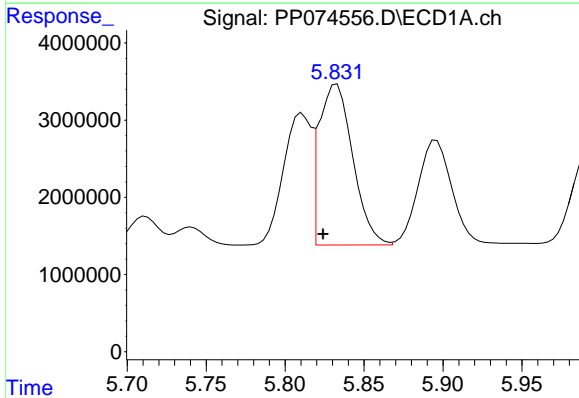
R.T.: 5.811 min
 Delta R.T.: 0.008 min
 Response: 20989088
 Conc: 476.06 ng/ml

Instrument :
 ECD_P
 ClientSampleId :
 AR1660CCC500



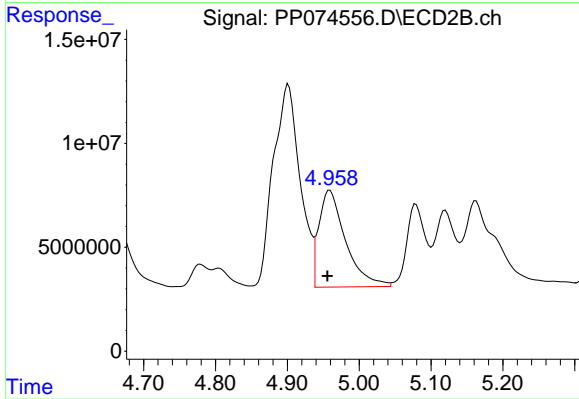
#3 AR-1016-1

R.T.: 4.902 min
 Delta R.T.: 0.004 min
 Response: 253426833
 Conc: 497.55 ng/ml



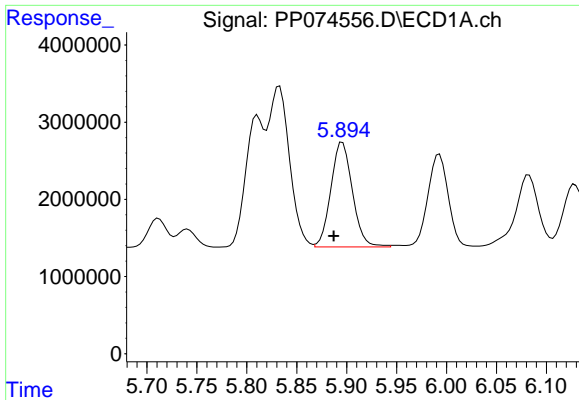
#4 AR-1016-2

R.T.: 5.833 min
 Delta R.T.: 0.009 min
 Response: 31009728
 Conc: 493.46 ng/ml



#4 AR-1016-2

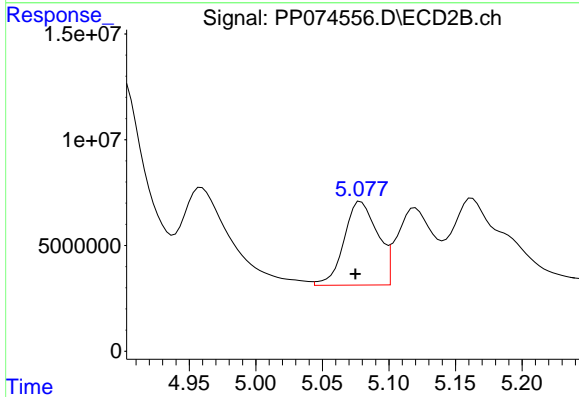
R.T.: 4.959 min
 Delta R.T.: 0.004 min
 Response: 120325994
 Conc: 505.54 ng/ml



#5 AR-1016-3

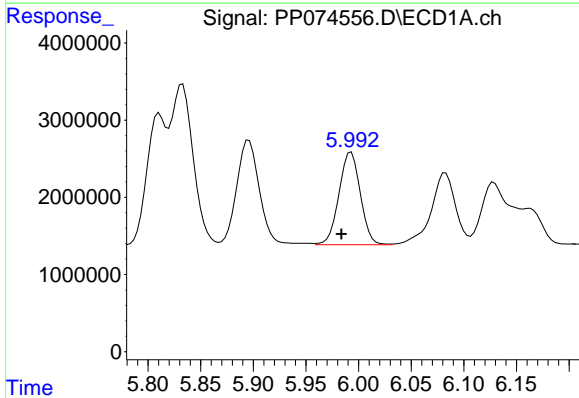
R.T.: 5.896 min
 Delta R.T.: 0.009 min
 Response: 20379566
 Conc: 453.75 ng/ml

Instrument :
 ECD_P
 ClientSampleId :
 AR1660CCC500



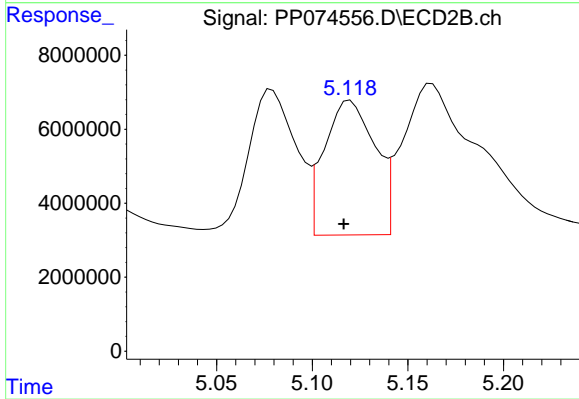
#5 AR-1016-3

R.T.: 5.079 min
 Delta R.T.: 0.004 min
 Response: 69281164
 Conc: 502.39 ng/ml



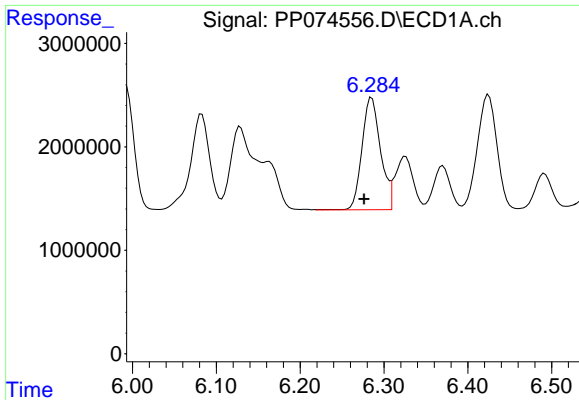
#6 AR-1016-4

R.T.: 5.993 min
 Delta R.T.: 0.009 min
 Response: 17009898
 Conc: 483.49 ng/ml



#6 AR-1016-4

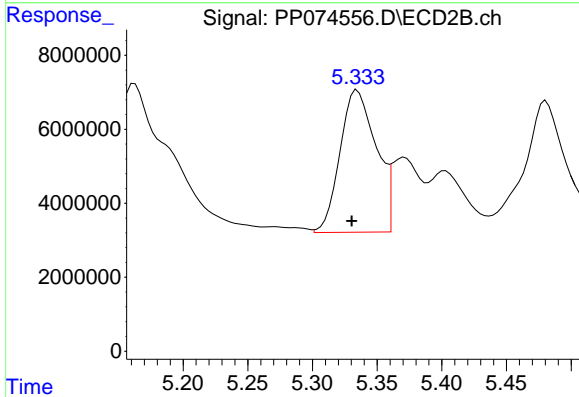
R.T.: 5.120 min
 Delta R.T.: 0.003 min
 Response: 66827269
 Conc: 478.01 ng/ml



#7 AR-1016-5

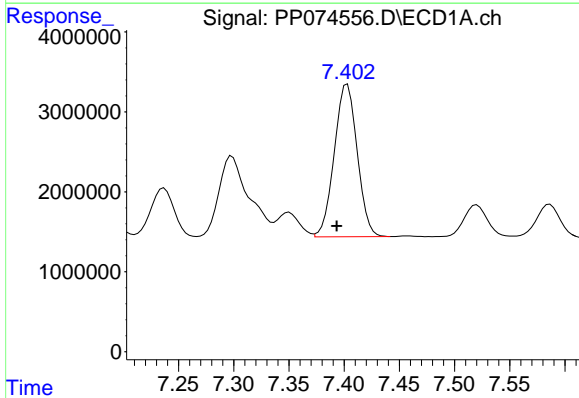
R.T.: 6.285 min
 Delta R.T.: 0.009 min
 Response: 16639440
 Conc: 501.40 ng/ml

Instrument :
 ECD_P
 ClientSampleId :
 AR1660CCC500



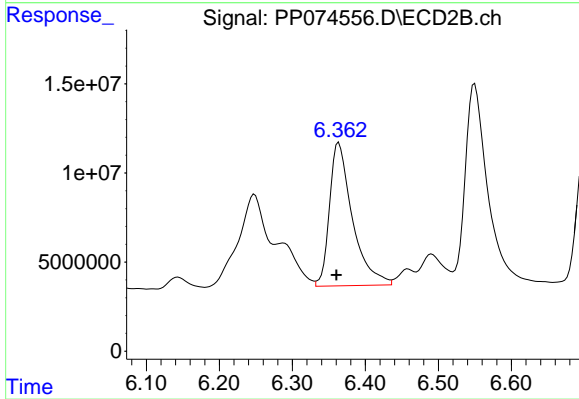
#7 AR-1016-5

R.T.: 5.335 min
 Delta R.T.: 0.004 min
 Response: 74581548
 Conc: 449.06 ng/ml



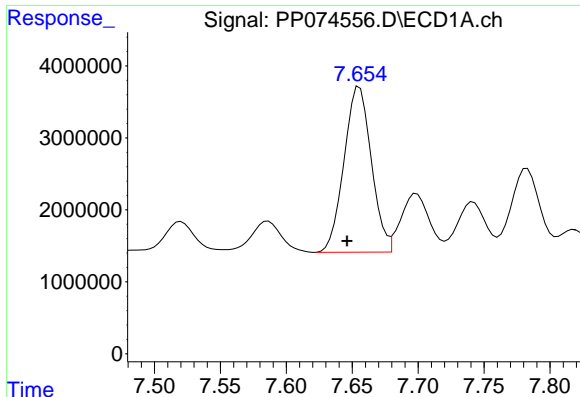
#31 AR-1260-1

R.T.: 7.403 min
 Delta R.T.: 0.010 min
 Response: 27602921
 Conc: 477.48 ng/ml



#31 AR-1260-1

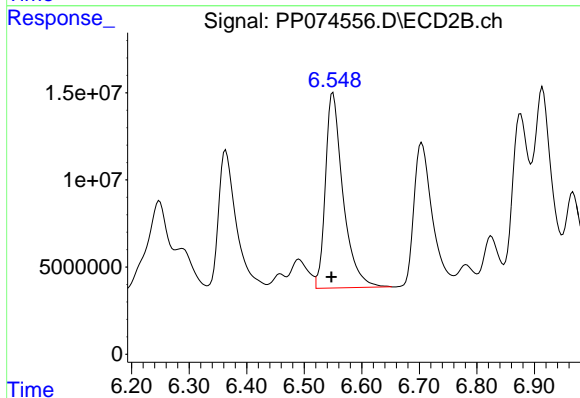
R.T.: 6.364 min
 Delta R.T.: 0.004 min
 Response: 175173483
 Conc: 466.85 ng/ml



#32 AR-1260-2

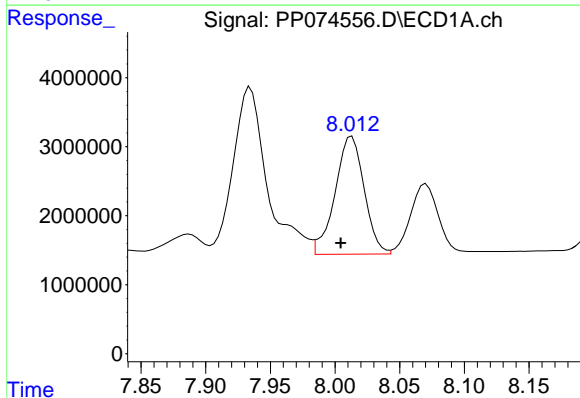
R.T.: 7.656 min
 Delta R.T.: 0.010 min
 Response: 33129737
 Conc: 480.72 ng/ml

Instrument :
 ECD_P
 ClientSampleId :
 AR1660CCC500



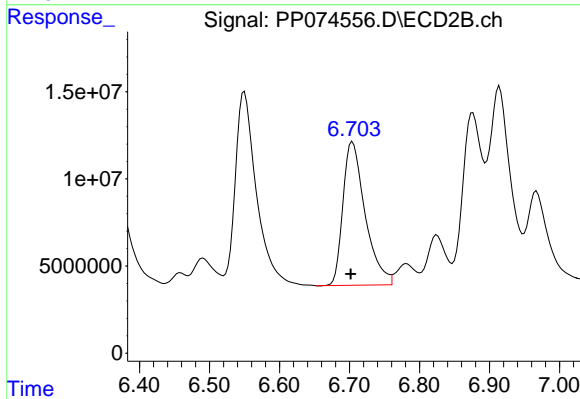
#32 AR-1260-2

R.T.: 6.550 min
 Delta R.T.: 0.003 min
 Response: 238591857
 Conc: 451.18 ng/ml



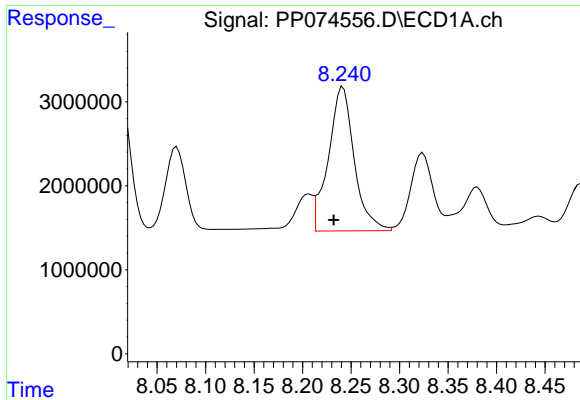
#33 AR-1260-3

R.T.: 8.013 min
 Delta R.T.: 0.009 min
 Response: 26719557
 Conc: 514.97 ng/ml



#33 AR-1260-3

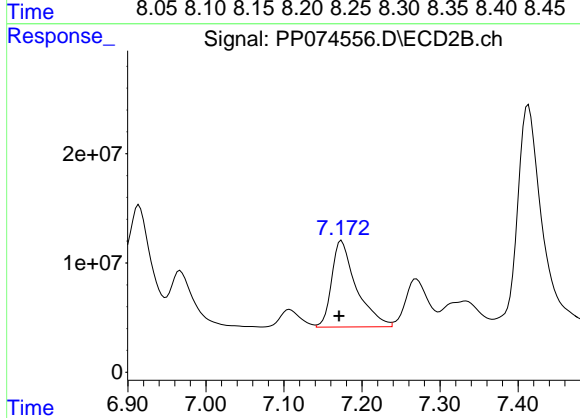
R.T.: 6.704 min
 Delta R.T.: 0.003 min
 Response: 181208247
 Conc: 418.49 ng/ml



#34 AR-1260-4

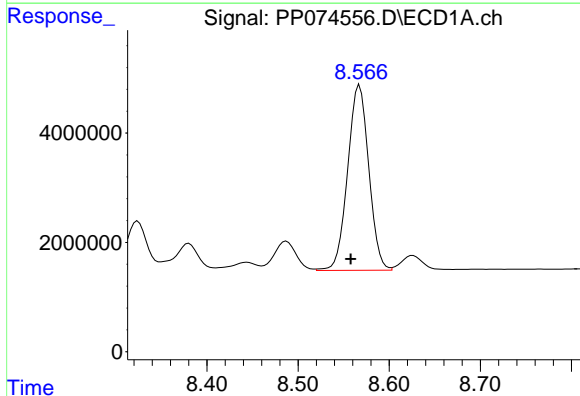
R.T.: 8.242 min
 Delta R.T.: 0.010 min
 Response: 31766593
 Conc: 497.97 ng/ml

Instrument :
 ECD_P
 ClientSampleId :
 AR1660CCC500



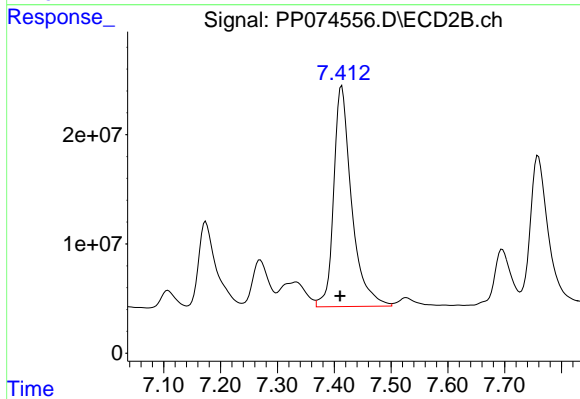
#34 AR-1260-4

R.T.: 7.174 min
 Delta R.T.: 0.003 min
 Response: 172766100
 Conc: 452.89 ng/ml



#35 AR-1260-5

R.T.: 8.568 min
 Delta R.T.: 0.010 min
 Response: 54554037
 Conc: 481.02 ng/ml



#35 AR-1260-5

R.T.: 7.413 min
 Delta R.T.: 0.003 min
 Response: 443675186
 Conc: 441.70 ng/ml