

Data Path : Z:\pestpcbsrv\HPCHEM1\ECD_P\Data\PP082125\
 Data File : PP074558.D
 Signal(s) : Signal #1: ECD1A.ch Signal #2: ECD2B.ch
 Acq On : 21 Aug 2025 21:04
 Operator : YP\AJ
 Sample : AR1248CCC500
 Misc :
 ALS Vial : 5 Sample Multiplier: 1

Instrument :
 ECD_P
ClientSampleId :
 AR1248CCC500

Manual Integrations
APPROVED

Reviewed By :Yogesh Patel 08/22/2025
 Supervised By :mohammad ahmed 08/25/2025

Integration File signal 1: autoint1.e
 Integration File signal 2: autoint2.e
 Quant Time: Aug 22 00:27:01 2025
 Quant Method : Z:\pestpcbsrv\HPCHEM1\ECD_P\methods\PP081925.M
 Quant Title : GC EXTRACTABLES
 QLast Update : Wed Aug 20 06:20:44 2025
 Response via : Initial Calibration
 Integrator: ChemStation

Volume Inj. : 2 µl
 Signal #1 Phase : ZB-MR1 Signal #2 Phase: ZB-MR2
 Signal #1 Info : 30Mx0.32mmx 0.50µ Signal #2 Info : 30M x 0.32mm x 0.25µm

Compound	RT#1	RT#2	Resp#1	Resp#2	ng/ml	ng/ml

System Monitoring Compounds						
1) SA Tetrachlo...	4.655	3.797	59770354	254.5E6	48.844	52.625
2) SA Decachlor...	10.435	8.812	50930874	355.1E6	51.575	47.356
Target Compounds						
21) L5 AR-1248-1	5.807	4.896	15315417	146.3E6	506.730	529.857
22) L5 AR-1248-2	6.078	5.116	21314059	92815483	494.571	525.107
23) L5 AR-1248-3	6.281	5.157	23498778	110.6E6	503.147	486.865m
24) L5 AR-1248-4	6.678	5.329	26981857	110.9E6	490.572	508.841
25) L5 AR-1248-5	6.718	5.720	26944244	194.4E6	485.740	529.156

(f)=RT Delta > 1/2 Window (#)=Amounts differ by > 25% (m)=manual int.

Data Path : Z:\pestpcbsrv\HPCHEM1\ECD_P\Data\PP082125\
 Data File : PP074558.D
 Signal(s) : Signal #1: ECD1A.ch Signal #2: ECD2B.ch
 Acq On : 21 Aug 2025 21:04
 Operator : YP\AJ
 Sample : AR1248CCC500
 Misc :
 ALS Vial : 5 Sample Multiplier: 1

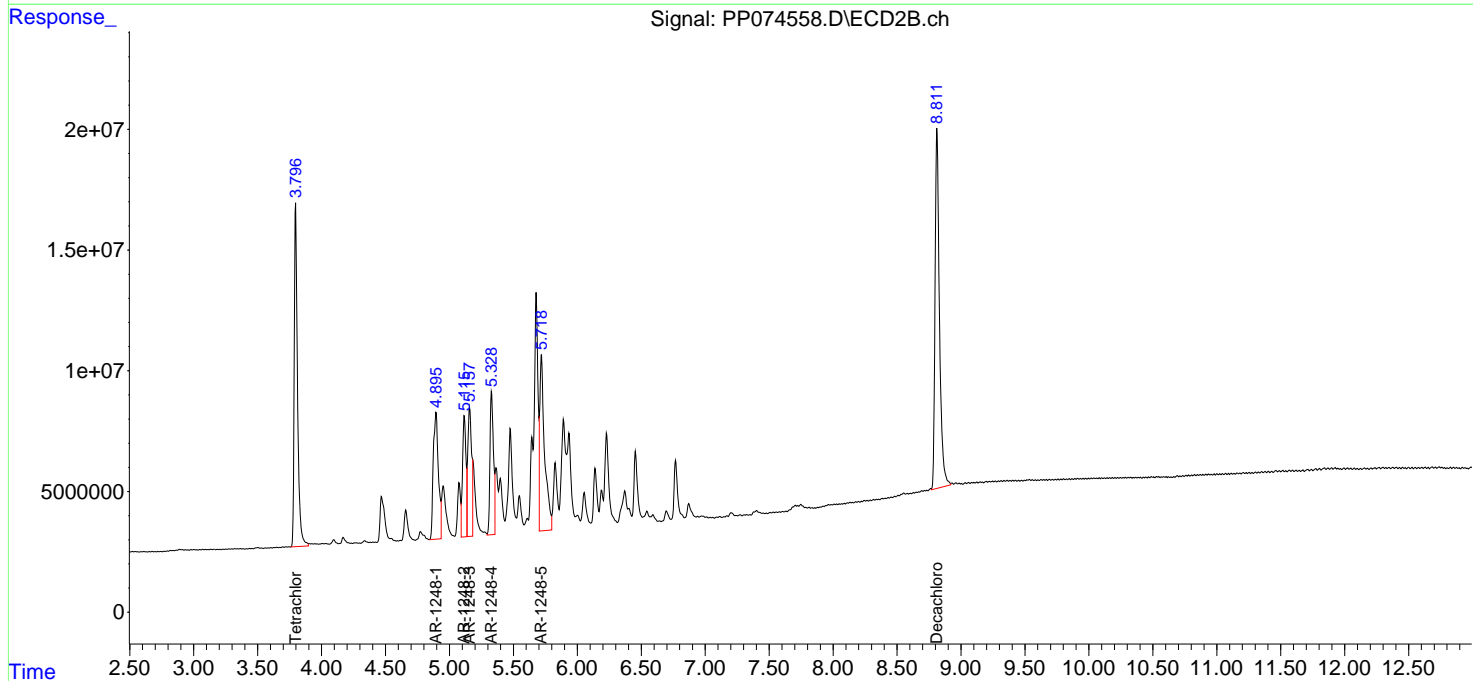
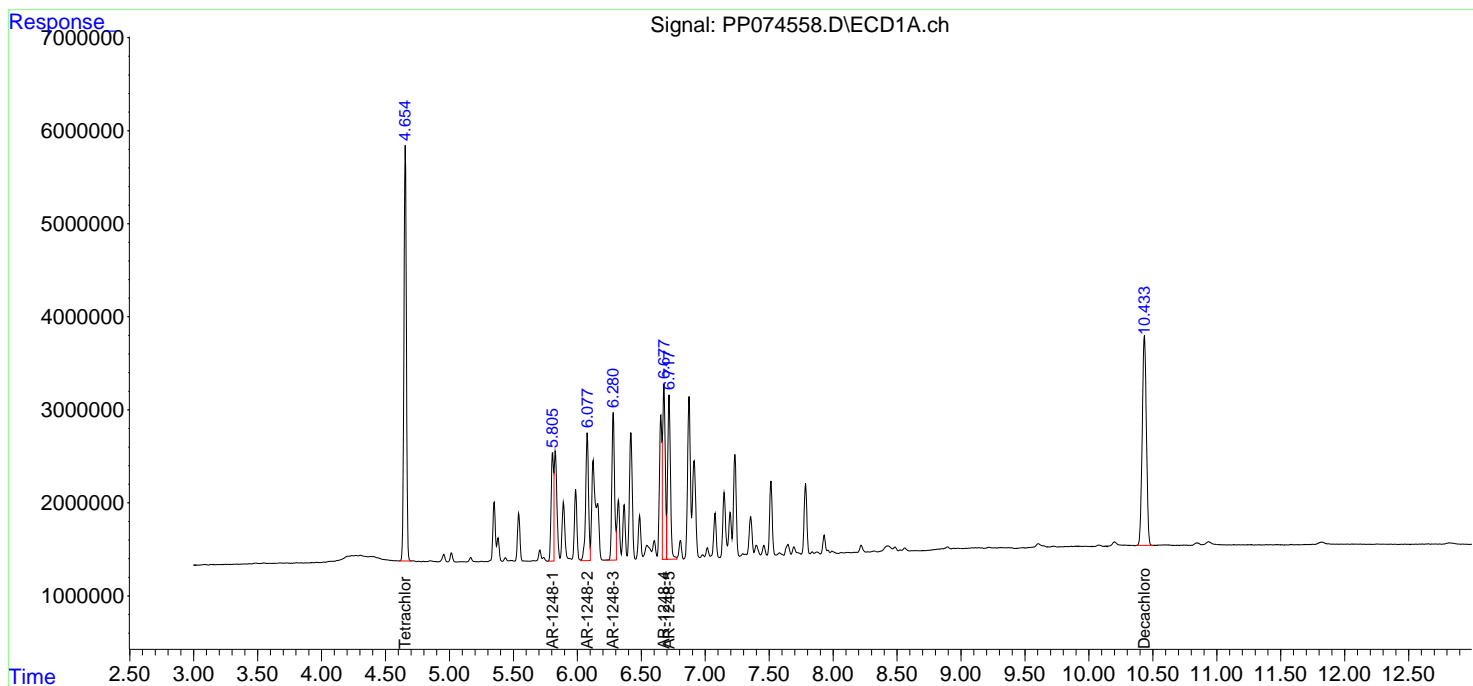
Instrument :
 ECD_P
ClientSampleId :
 AR1248CCC500

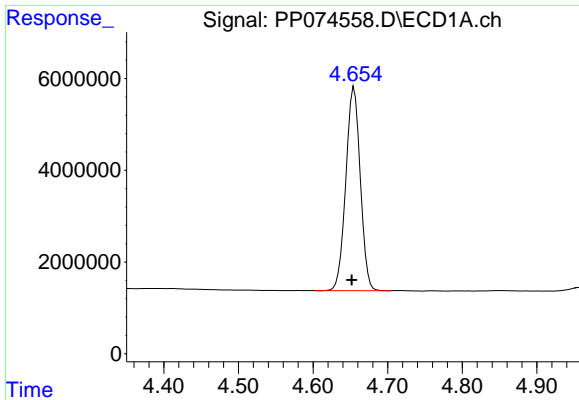
Manual Integrations
APPROVED

Reviewed By :Yogesh Patel 08/22/2025
 Supervised By :mohammad ahmed 08/25/2025

Integration File signal 1: autoint1.e
 Integration File signal 2: autoint2.e
 Quant Time: Aug 22 00:27:01 2025
 Quant Method : Z:\pestpcbsrv\HPCHEM1\ECD_P\methods\PP081925.M
 Quant Title : GC EXTRACTABLES
 QLast Update : Wed Aug 20 06:20:44 2025
 Response via : Initial Calibration
 Integrator: ChemStation

Volume Inj. : 2 µl
 Signal #1 Phase : ZB-MR1 Signal #2 Phase: ZB-MR2
 Signal #1 Info : 30Mx0.32mmx 0.50µ Signal #2 Info : 30M x 0.32mm x 0.25µm

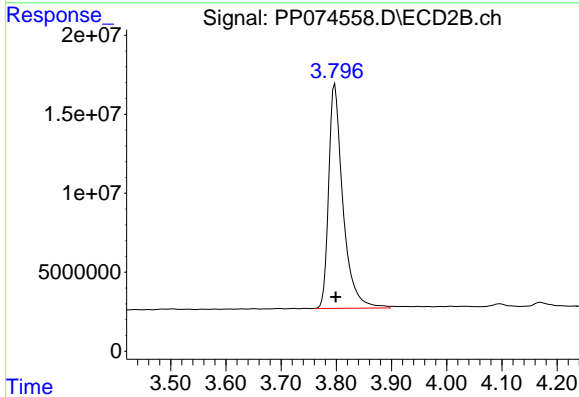




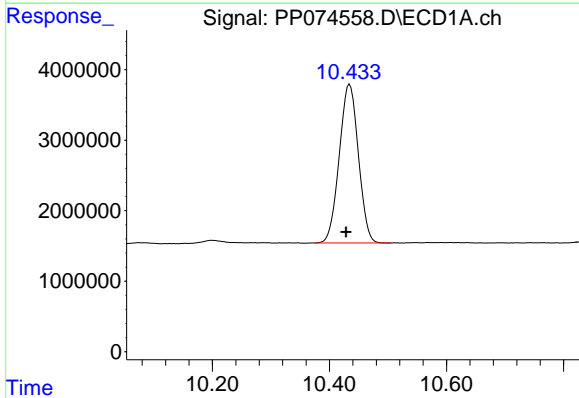
#1 Tetrachloro-m-xylene
 R.T.: 4.655 min
 Delta R.T.: 0.003 min
 Response: 59770354
 Conc: 48.84 ng/ml

Instrument : ECD_P
 ClientSampleId : AR1248CCC500

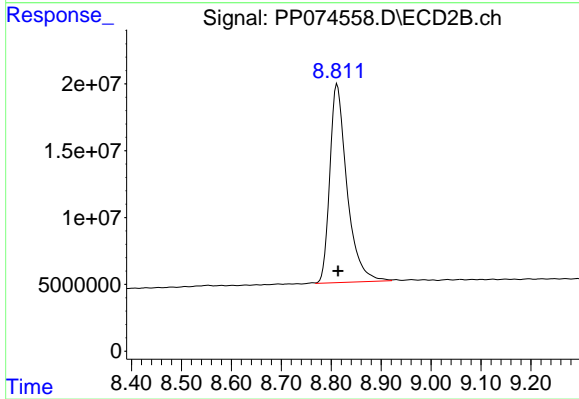
Manual Integrations
APPROVED
 Reviewed By :Yogesh Patel 08/22/2025
 Supervised By :mohammad ahmed 08/25/2025



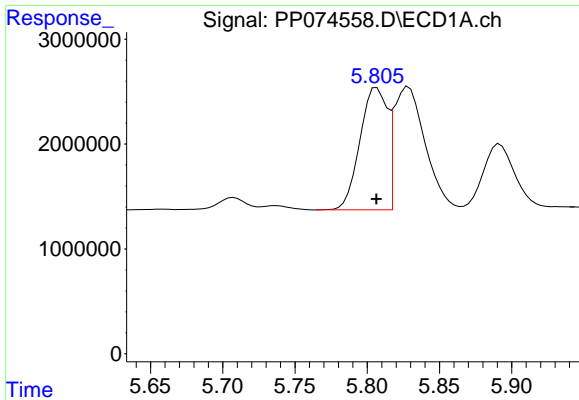
#1 Tetrachloro-m-xylene
 R.T.: 3.797 min
 Delta R.T.: -0.001 min
 Response: 254462277
 Conc: 52.62 ng/ml



#2 Decachlorobiphenyl
 R.T.: 10.435 min
 Delta R.T.: 0.006 min
 Response: 50930874
 Conc: 51.58 ng/ml



#2 Decachlorobiphenyl
 R.T.: 8.812 min
 Delta R.T.: -0.002 min
 Response: 355129615
 Conc: 47.36 ng/ml



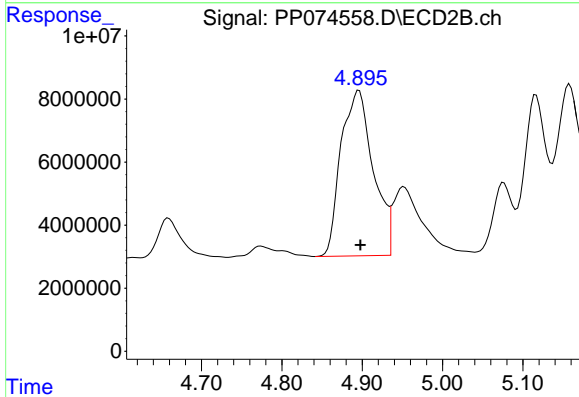
#21 AR-1248-1

R.T.: 5.807 min
 Delta R.T.: 0.000 min
 Response: 15315417
 Conc: 506.73 ng/ml

Instrument :
 ECD_P
 ClientSampleId :
 AR1248CCC500

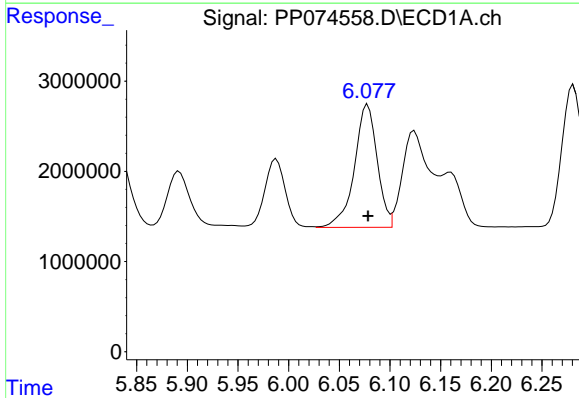
Manual Integrations
 APPROVED

Reviewed By :Yogesh Patel 08/22/2025
 Supervised By :mohammad ahmed 08/25/2025



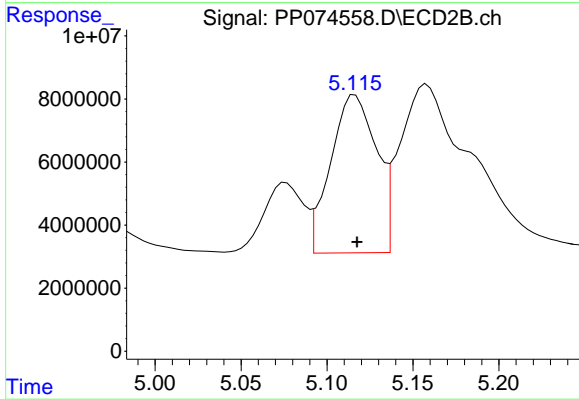
#21 AR-1248-1

R.T.: 4.896 min
 Delta R.T.: -0.001 min
 Response: 146316178
 Conc: 529.86 ng/ml



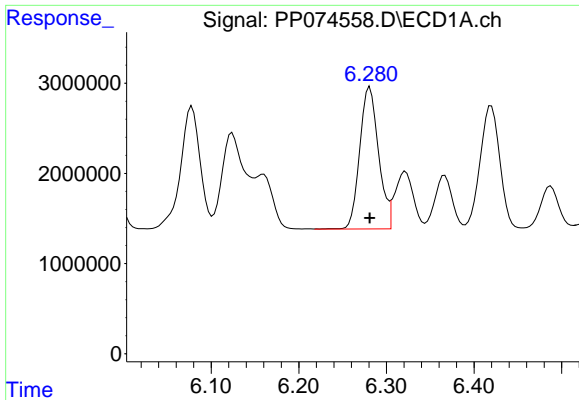
#22 AR-1248-2

R.T.: 6.078 min
 Delta R.T.: 0.000 min
 Response: 21314059
 Conc: 494.57 ng/ml



#22 AR-1248-2

R.T.: 5.116 min
 Delta R.T.: -0.001 min
 Response: 92815483
 Conc: 525.11 ng/ml



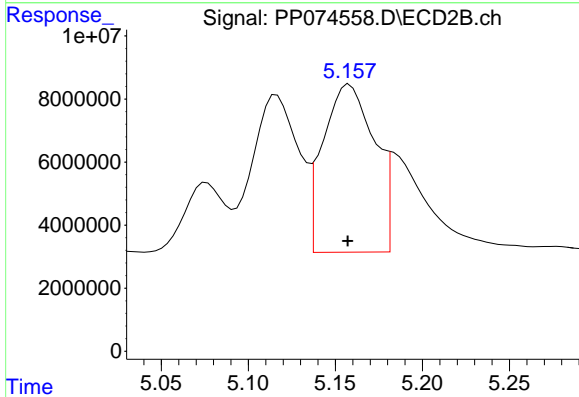
#23 AR-1248-3

R.T.: 6.281 min
 Delta R.T.: 0.000 min
 Response: 23498778
 Conc: 503.15 ng/ml

Instrument :
 ECD_P
 ClientSampleId :
 AR1248CCC500

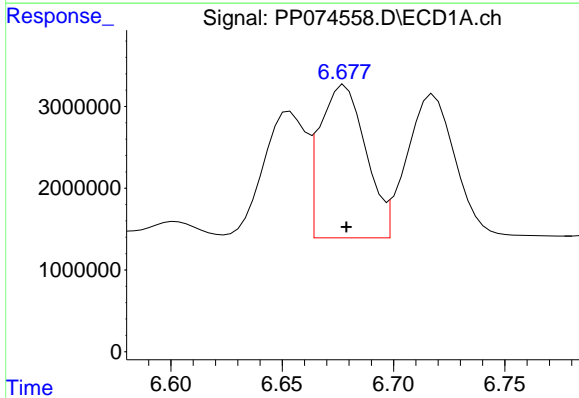
Manual Integrations
 APPROVED

Reviewed By :Yogesh Patel 08/22/2025
 Supervised By :mohammad ahmed 08/25/2025



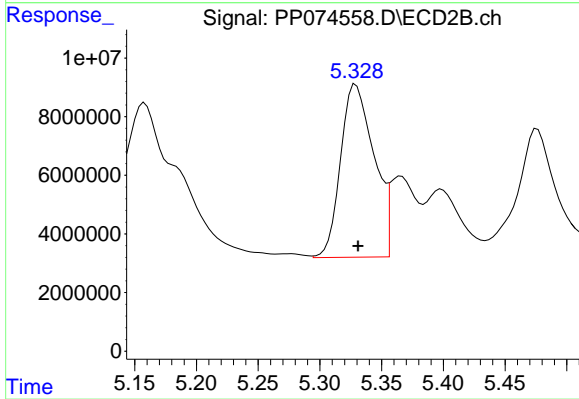
#23 AR-1248-3

R.T.: 5.157 min
 Delta R.T.: 0.000 min
 Response: 110617372
 Conc: 486.86 ng/ml m



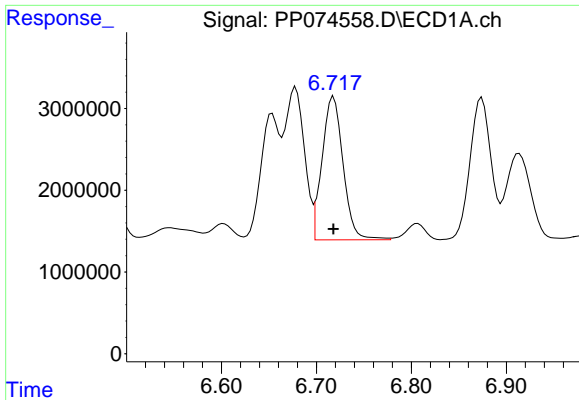
#24 AR-1248-4

R.T.: 6.678 min
 Delta R.T.: 0.000 min
 Response: 26981857
 Conc: 490.57 ng/ml



#24 AR-1248-4

R.T.: 5.329 min
 Delta R.T.: -0.002 min
 Response: 110938112
 Conc: 508.84 ng/ml



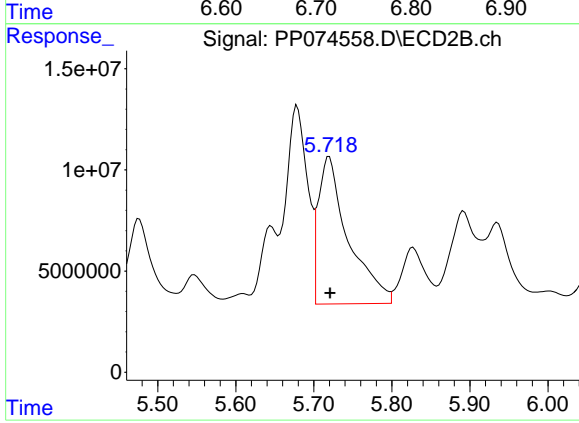
#25 AR-1248-5

R.T.: 6.718 min
 Delta R.T.: 0.000 min
 Response: 26944244
 Conc: 485.74 ng/ml

Instrument :
 ECD_P
 ClientSampleId :
 AR1248CCC500

Manual Integrations
 APPROVED

Reviewed By :Yogesh Patel 08/22/2025
 Supervised By :mohammad ahmed 08/25/2025



#25 AR-1248-5

R.T.: 5.720 min
 Delta R.T.: -0.001 min
 Response: 194370636
 Conc: 529.16 ng/ml